

SCIENTIFIC REPORTS



OPEN

Genome-Wide Linkage Analysis of Large Multiple Multigenerational Families Identifies Novel Genetic Loci for Coronary Artery Disease

Yang Guo^{1,2}, Fan Wang^{1,2}, Lin Li^{1,2}, Hanxiang Gao^{1,3}, Stephen Arckacki^{1,2}, Isabel Z. Wang^{1,4}, John Barnard⁵, Stephen Ellis⁶, Carlos Hubbard⁶, Eric J. Topol⁷, Qiuyun Chen^{1,2} & Qing K. Wang^{1,2,6,8}

Coronary artery disease (CAD) is the leading cause of death, and genetic factors contribute significantly to risk of CAD. This study aims to identify new CAD genetic loci through a large-scale linkage analysis of 24 large and multigenerational families with 433 family members (GeneQuest II). All family members were genotyped with markers spaced by every 10 cM and a model-free nonparametric linkage (NPL-all) analysis was carried out. Two highly significant CAD loci were identified on chromosome 17q21.2 (NPL score of 6.20) and 7p22.2 (NPL score of 5.19). We also identified four loci with significant NPL scores between 4.09 and 4.99 on 2q33.3, 3q29, 5q13.2 and 9q22.33. Similar analyses in individual families confirmed the six significant CAD loci and identified seven new highly significant linkages on 9p24.2, 9q34.2, 12q13.13, 15q26.1, 17q22, 20p12.3, and 22q12.1, and two significant loci on 2q11.2 and 11q14.1. Two loci on 3q29 and 9q22.33 were also successfully replicated in our previous linkage analysis of 428 nuclear families. Moreover, two published risk variants, SNP rs46522 in *UBE2Z* and SNP rs6725887 in *WDR12* by GWAS, were found within the 17q21.2 and 2q33.3 loci. These studies lay a foundation for future identification of causative variants and genes for CAD.

Genetic factors contribute to the risk of developing coronary artery disease (CAD) and its major complication, myocardial infarction (MI), which is the result of the accumulation of atherosclerotic plaques in the walls of the coronary arteries^{1–3}. Existing knowledge of genetic components affecting the risk of CAD is largely based on results from genome-wide association studies (GWAS), a systematic, unbiased and powerful approach to identify disease-associated variants using population samples. Although the majority of GWAS have focused on European ancestry populations^{4–14}, several GWAS were also reported in African Americans¹⁵, East Asians^{16–21} and South Asians^{9,22}. Due to newly developed SNP imputation methods^{23–25} based on the HapMap project (<https://www.ncbi.nlm.nih.gov/probe/docs/projhapmap/>) and the 1000 Genome project (<http://www.internationalgenome.org/>), meta-GWAS is becoming a more popular strategy for CAD and other complex diseases. The largest meta-GWAS recently analyzed 9.4 million imputed SNPs among >185,000 samples and identified 10 novel CAD loci¹⁴. To date, there have been 65 independent CAD susceptibility loci reported at a genome-wide significance level (i.e., $P < 5.0 \times 10^{-8}$). The heritability of CAD has been estimated from 40% to 60% by genetic-epidemiologic

¹Center for Cardiovascular Genetics, Department of Molecular Cardiology, Lerner Research Institute, Cleveland Clinic, Cleveland, OH, 44195, USA. ²Department of Molecular Medicine, Cleveland Clinic Lerner College of Medicine of Case Western Reserve University, Cleveland, OH, 44195, USA. ³Heart Center, the First Affiliated Hospital, Lanzhou University, Lanzhou, Gansu, 730000, P. R. China. ⁴Shaker Heights High School, Shaker Heights, OH, 44120, USA. ⁵Department of Quantitative Health Sciences, Cleveland Clinic, Cleveland, OH, 44195, USA. ⁶Department of Cardiovascular Medicine, Sydell & Arnold Miller Family Heart & Vascular Institute, Cleveland Clinic, Cleveland, OH, 44195, USA. ⁷Scripps Translational Science Institute, Scripps Research Institute, Scripps Clinic, La Jolla, CA, 92037, USA. ⁸Department of Genetics and Genome Sciences, Case Western Reserve University School of Medicine, Cleveland, OH, 44106, USA. Yang Guo, Fan Wang, Lin Li and Hanxiang Gao contributed equally to this work. Correspondence and requests for materials should be addressed to Q.C. (email: chengq3@ccf.org) or Q.K.W. (email: wangq2@ccf.org)

Feature	GeneQuest II (24 Families)
No. Male/No. Female	209/224
Age of Onset of CAD, year ^a	51.3 ± 9.2
No. affected with CAD	162
Caucasian, %	100
Pedigree structure:	
No. of pedigrees	24
Pedigree size, n (mean ± SD)	18.04 ± 10.55
Pedigree size, n (min, median, max)	5, 15, 38
No. of relative pairs:	
Sibling/sibling, n	398
Sister/sister, n	154
Brother/brother, n	105
Brother/sister, n	139
Half sibling/half sibling, n	0

Table 1. Clinical and Demographic Characteristics of the GeneQuest II Study Population. ^aData were shown as mean ± SD.

studies²⁶. However, recent studies strongly indicate that GWAS variants cannot fully explain the heritability of CAD, and all published risk variants explained only 10–20% of heritability^{13, 14, 27}.

Genome-wide linkage analysis (GWLA) is another systematic and unbiased approach to identify genetic loci for human complex diseases and to search for evidence of major genetic effects. The first GWLA for CAD, conducted in 2000, involved an analysis of 156 affected sibling pairs and revealed two genetic loci on chromosomes 2q21.1–22 and Xq23–26 that were linked to premature CAD²⁸. Since then, over ten GWLAs, including our own studies, have identified additional genetic loci for CAD or MI, including 1p34–36, 1q25, 2q14.3, 2q36–37.3, 2q13, 3q13, 5q31, 7p14, 8p22, 13q12–13, 14q32.3, 15q26.3, 16p13, and 17p11.2–17q21^{28–39}. Recently, we have completed a genome-wide linkage scan in a well characterized U.S. GeneQuest cohort with 428 nuclear families and identified six novel CAD loci on chromosomes 3p25.1, 3p29, 9q22.3, 9p34.11, 17p12, and 21q22.3⁴⁰. In contrast to aforementioned GWASs, the number of genetic loci identified by GWLA was much smaller and independent, suggesting that many linkage loci remain to be identified in new CAD or MI families⁴⁰.

Most GWLAs for CAD have been conducted in either single large pedigrees or a large number of nuclear families. Increasing the number of family members within families can improve the power of linkage analysis^{36, 40, 41}. In this study, we performed a large scale GWLA in a well-characterized U.S. cohort of 24 large, multigenerational CAD families (mean pedigree size = 18). This cohort, referred to as GeneQuest II, was independent from our previously reported GeneQuest cohort with 428 nuclear families⁴⁰. The most attractive feature of the GeneQuest II cohort is the inclusion of extended family members of affected siblings or trios. To our knowledge, this is the largest linkage analysis of multiple large pedigrees to identify genetic loci for CAD, and significant susceptibility loci were identified.

Results

Characteristics of 24 large GeneQuest II families. The 24 large and multigenerational families with CAD and MI were genetically characterized (Table 1). The pedigrees of the 24 GeneQuest II families are shown in Fig. 1. 433 family members from the 24 families were included in the linkage analysis. The pedigree size ranged from 5 to 38 members per family, and the average age of onset of CAD was 51.3 ± 9.2 years in GeneQuest II. There were 162 patients affected with CAD and 247 family members without a diagnosis of CAD. Overall, there were 209 males and 224 females. However, among the CAD group, male patients (107 or 66.0%) were more predominant than female patients (55 or 34.0%). On the contrary, among the non-CAD group, 154 members were females (62.3%). These data are consistent with the notion that the male gender is an important risk factor for CAD.

A full set of 410 microsatellite markers spanning the entire human genome by every 10 cM were initially genotyped for all 433 family members in the 24 CAD families. 36 markers were excluded for further analysis, including 9 autosomal markers with genotype and pedigree errors and 27 markers on X and Y chromosomes. Therefore, after quality control, 374 microsatellite markers on autosomes 1–22 from 433 family members were subjected to subsequent statistical analysis.

Genome-wide linkage scans. As shown in Table 2, genome-wide two-point NPL linkage analysis identified two highly significant linkages at markers D7S3056 (7p22.2, NPL score = 5.19) and D17S1299 (17q21.2, NPL score = 6.20), respectively. Three significant linkages were also identified at markers D2S1384 (2q33.3, NPL score = 4.36), GATA138B05 (5q13.2, NPL score = 4.44) and D9S910 (9q22.33, NPL score = 4.54), respectively (Table 2).

Multipoint NPL analysis was further performed. Multipoint NPL scores were plotted along the genetic map for each of 22 chromosomes (Figs 2 and 3). Multipoint NPL analysis identified four significant genetic loci for CAD on chromosomes 17q21.1, 7p22.2, 2q33.3 and 3q29. The top CAD locus on chromosome 17q21.2 identified by the two-point linkage analysis remained to be a highly significant linkage peak with a NPL score of 5.38 by multipoint NPL analysis. The CAD locus on 17q21.2 covered a genetic interval from 56.9 cM to 83.1 cM (Fig. 3).

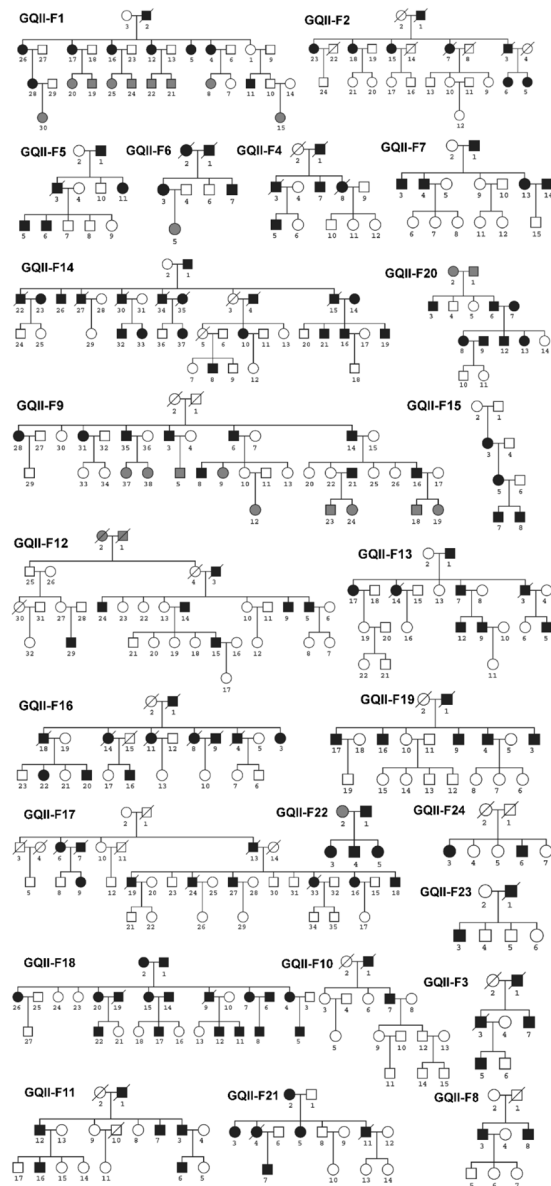


Figure 1. Pedigrees of 24 GeneQuest II families. Unaffected subjects were shown as clear circles (females) or squares (males), and affected subjects were shown as solid symbols. Subjects with uncertain phenotypes were shown in gray color. The deceased subjects were marked by a slash symbol.

CAD Locus	Cytoband	Genetic Map ^a	Genomic Position ^b	NPL Score	
				Two-point	Multipoint
Highly Significant Linkage: two-point or multipoint NPL ≥ 4.99					
D17S1299	17q21.2	62.01	38.99	6.20	5.38
D7S3056	7p22.2	7.44	4.49	5.19	4.74
Significant Linkage: two-point or multipoint NPL ≥ 4.08					
D2S1384	2q33.3	200.43	205.23	4.36	4.22
D3S2418	3q29	215.84	192.32	4.00	4.49
GATA138B05	5q13.2	78.80	71.4	4.44	3.35
D9S910	9q22.33	104.48	101.62	4.54	2.73

Table 2. Genomic Regions Significantly Linked to CAD as Identified by GWLS in the Combined GeneQuest II Families: Two Highly Significant Linkages and Four Significant Linkages. ^aThe genetic map position was based on Marshfield Medical Genetic marker set 11. ^bPhysical genomic position was retrieved from the UCSC database with human build GRCh37/hg19.

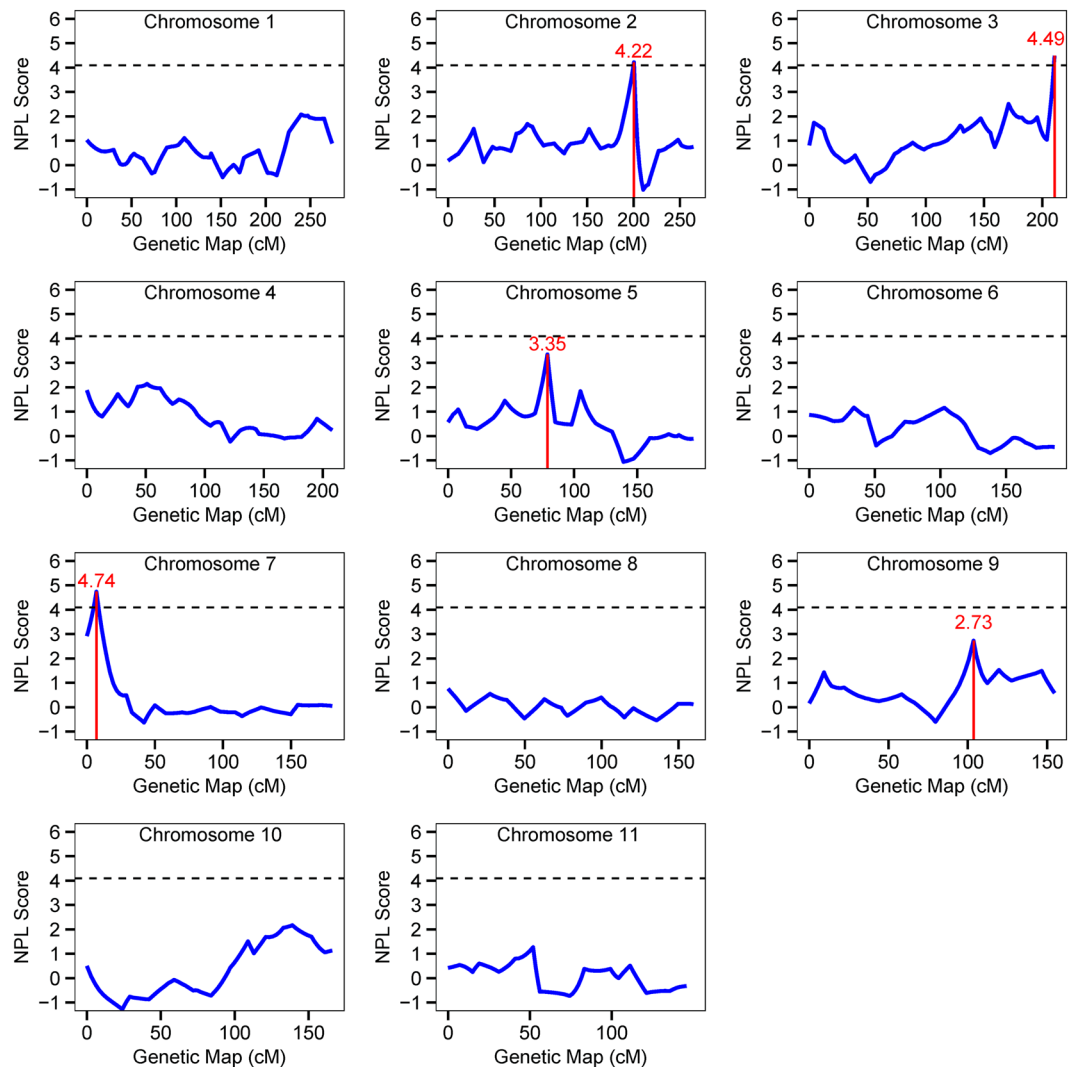


Figure 2. Genome-Wide Linkage Scan of Chromosomes 1–11 for CAD in 24 Large GeneQuest II families. X-axis and Y-axis indicate the genetic map of each chromosome and NPL scores from multipoint linkage analysis as shown by blue solid line, respectively. The red vertical solid line shows a significant linkage peak identified by two-point NPL analysis. The horizontal dash line represents the threshold of significant linkage with a multipoint NPL value of ≥ 4.08 .

The second best CAD locus identified by multipoint NPL analysis was on 7p22.2 with a NPL score of 4.74, and the linkage covered an interval between 1.4 cM and 11.0 cM (Fig. 2). Compared with two-point NPL scores, multipoint NPL scores of the six CAD loci slightly decreased except for the 3q29 locus with an improved NPL score from 4.00 to 4.49.

Moreover, both two-point and multipoint NPL analyses were carried out in individual families. Each of the 6 significant CAD loci was found to occur in at least one individual family (Table 3). NPL scores in single families were, in general, higher than those in the combined families (Table 3). In addition, this analysis identified 15 new linkages for CAD, including 7 highly significant linkages on chromosomes 12q13.13, 17q22, 20p12.3, 22q12.1, 15q26.1, 9q34.2, and 9p24.2, 2 significant linkages on 11q14.1 and 2q11.2, and 6 suggestive linkages on 10p15.3, 10q21.3, 2p16.3, 20q13.32, 12q23.1, and 4p16.3 (Table 4).

Potential CAD-related genes underlying six significant CAD loci. To explore candidate genes for CAD under the six significant genetic loci identified for CAD in the combined GeneQuest II families, we annotated all genes underlying each linkage. Genetic intervals of the six linkages were converted to physical locations according to the genetic maps generated by the HapMap 2 project (lifted over to hg19). RefSeq genes located under the six linkages were retrieved from the UCSC database (Track: RefSeq Genes; Assembly, GRCh37/hg19), and then evaluated for potential relationship with cardiovascular diseases using the online program DisGeNET^{42,43}. Counts of RefSeq genes and gene-disease pairs with score of >0.001 are summarized in Table 5.

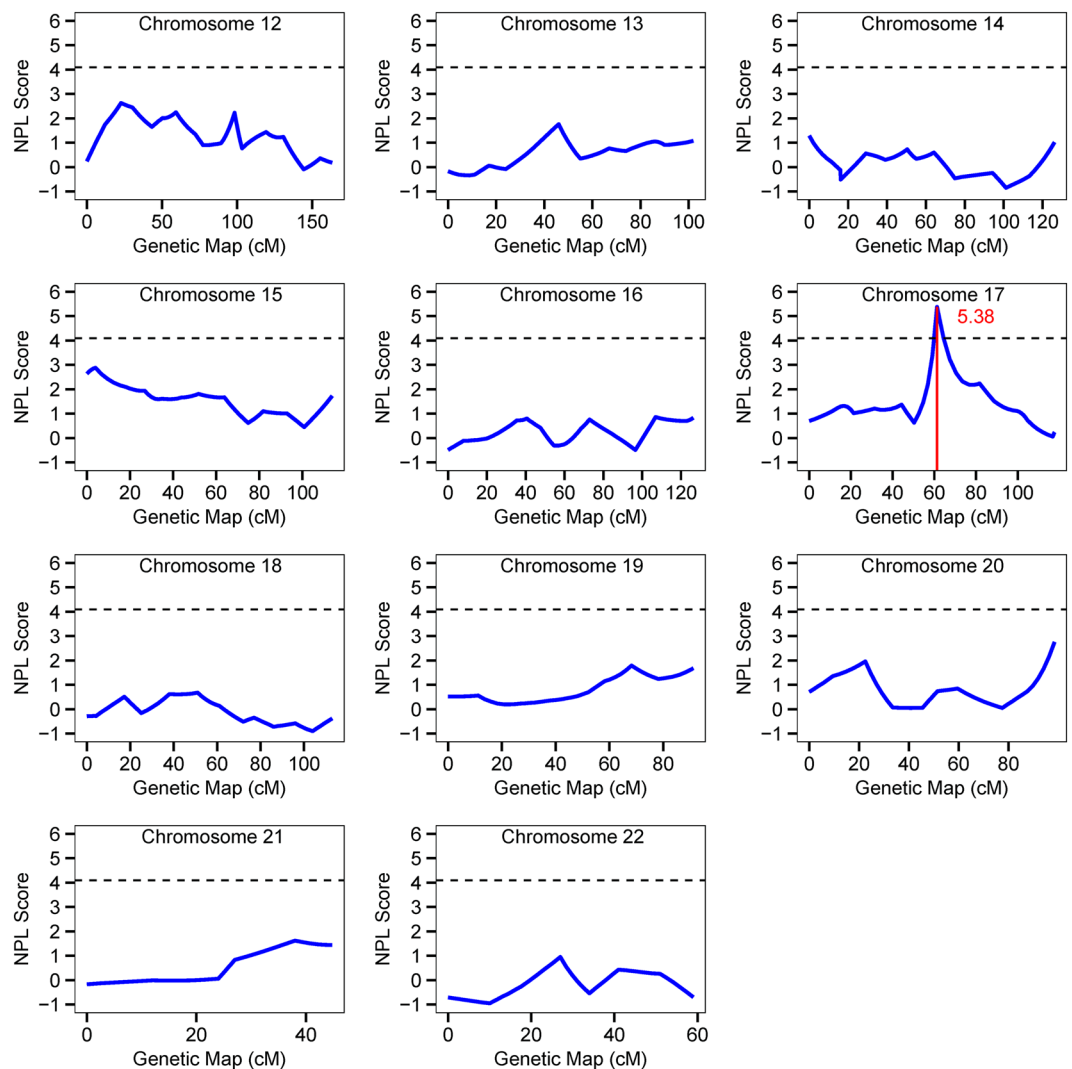


Figure 3. Genome-Wide Linkage Scan of Chromosomes 12–22 for CAD in 24 Large GeneQuest II families. X-axis and Y-axis indicate the genetic map of each chromosome and NPL scores from multipoint linkage analysis as shown by blue solid line, respectively. The red vertical solid line shows a significant linkage peak identified by two-point NPL analysis. The horizontal dash line represents the threshold of significant linkage with a multipoint NPL value of ≥ 4.08 .

CAD Locus	Cytoband	Family	Genetic Map ^a	Genomic Position ^b	NPL Score	
					Two-point	Multipoint
D17S1299	17q21.2	GQ2-F18	62.01	38.99	16.81	13.22
D17S1299	17q21.2	GQ2-F9	62.01	38.99	3.31	3.95
D7S3056	7p22.2	GQ2-F18	7.44	4.49	12.42	11.27
D7S3056	7p22.2	GQ2-F9	7.44	4.49	3.80	4.47
D7S3056	7p22.2	GQ2-F17	7.44	4.49	3.25	3.43
D2S1384	2q33.3	GQ2-F18	200.43	205.23	16.87	16.83
D3S2418	3q29	GQ2-F14	215.84	192.32	5.66	4.35
GATA138B05	5q13.2	GQ2-F19	78.80	71.40	4.89	3.50
D9S910	9q22.33	GQ2-F18	104.48	101.62	14.41	6.38

Table 3. Six Genetic Loci for CAD Confirmed by GWLS in Individual GeneQuest II Families. ^aThe genetic map position was based on Marshfield Medical Genetic marker set 11. ^bPhysical genomic position was retrieved from the UCSC database with human build GRCh37/hg19.

CAD Locus	Cytoband	Family	Genetic Map ^a	Genomic Position ^b	NPL Score	
					Two-point	Multipoint
D12S297	12q13.13	GQ2-F1	65.00	52.61	4.09	6.76
D17S1290	17q22	GQ2-F9	82.00	56.33	2.06	6.51
AAT034	20p12.3	GQ2-F9	25.00	8.71	5.03	6.01
D22S689	22q12.1	GQ2-F9	29.00	28.86	5.92	2.19
D15S652	15q26.1	GQ2-F9	90.00	92.52	3.89	5.83
D9S2157	9q34.2	GQ2-F9	147.00	136.04	5.34	0.87
AAAAC001	9p24.2	GQ2-F9	9.30	4.18	5.00	3.14
D11S2002	11q14.1	GQ2-F18	85.00	79.97	4.83	4.14
D2S2972	2q11.2	GQ2-F1	114.40	102.57	0.61	4.26
D10S1435	10p15.3	GQ2-F1	4.00	2.24	2.79	3.54
D10S1225	10q21.3	GQ2-F14	81.00	64.75	3.51	-0.16
D2S1352	2p16.3	GQ2-F17	73.60	50.83	3.44	3.31
D20S164	20q13.32	GQ2-F18	101.00	57.05	2.56	3.42
D12S1300	12q23.1	GQ2-F17	104.00	98.50	3.39	3.23
D4S3360	4p16.3	GQ2-F17	0.00	0.12	3.35	2.83

Table 4. New Genetic Loci for CAD Identified by GWLS in Individual GeneQuest II Families. ^aThe genetic map position was based on Marshfield Medical Genetic marker set 11. ^bPhysical genomic position was retrieved from the UCSC database with human build GRCh37/hg19.

Discussion

Identification of new genetic loci for CAD is critical for addressing the important issue of “missing heritability” in the field of genetics, and in fully elucidating the genetic basis of CAD. In this study, we report a unique genome-wide linkage scan for CAD in 24 large, multigenerational families from a well-characterized U.S. cohort (GeneQuest II). We carried out a model-free NPL-all scan and identified six susceptibility loci for CAD on chromosomes 2q33.3, 3q29, 5q13.2, 7p22.2, 9q22.33 and 17q21.2. It is interesting to note that the 3q29 and 9q22.33 loci were previously identified by us in a genome-wide linkage scan for CAD in 428 nuclear families in the GeneQuest population⁴⁰. Suggestive evidence of linkage to the 3q29 CAD locus ($P = 2.0 \times 10^{-4}$) was also found in a meta-analysis of four GWLS in Finnish, Mauritan, Germany, and Australian cohorts⁴⁴. Therefore, the present study provides strong validation of the 3q29 and 9q22.33 linkages for CAD using an independent, large family-based linkage scan, suggesting that these two loci can be prioritized for identifying the underlying causative genes for CAD. Candidate genes for CAD at the 3q29 and 9q22.33 loci are listed in Table 5. There are 31 unique RefSeq genes annotated within the CAD locus on 3q29. DisGenNET analysis identified 5 genes related to cardiovascular diseases (Table 5). The *UTS2B* gene encodes Urotensin IIB and was shown to play a role in the acceleration of atherosclerosis development. Increased human Urotensin II levels were observed in hypertension, diabetes, atherosclerosis and CAD⁴⁵. There are 20 unique genes within the 9q22.33 locus and three genes (*TGFBR1*, *NR4A3*, and *INVS*) were linked to cardiovascular diseases (Table 5). *TGFBR1* encodes transforming growth factor beta receptor 1 (TGFβ1) and an increase in active TGFβ1 levels were correlated with both the occurrence and severity of CAD⁴⁶.

The four other CAD loci on 2q33.3, 5q13.2, 7p22.2 and 17q21.2 are all novel. The chromosome 17q21.2 linkage is the most significant locus for CAD identified in this study. The 17q21.2 CAD locus was initially identified at marker D17S1299 at the position of 62.01 cM with a two-point NPL score of 6.20 and a multipoint NPL score of 5.38 (Table 2). This CAD locus spans a large genetic interval of 26.2 cM (corresponding to 34.40–57.50 Mb) (Fig. 3). Within the 17q21.2 CAD locus, we found SNP rs46522, which is a CAD-risk variant identified by a large-scale GWAS for CAD in 2013¹² and located about 8 Mb away from D17S1299. SNP rs46522, located in the *UBE2Z-GIP-ADTP5G* gene cluster, exhibited a strong cis-eQTL (expression quantitative trait locus) to *UBE2Z* in whole blood samples and to *ATP5G1* in left ventricle samples according to the GTEx database v6⁴⁷. On the other hand, we identified a set of 514 unique RefSeq genes within the 17q21.2 CAD locus; 77 of them were linked to cardiovascular diseases based on data from DisGenNET (Table 5). In particular, *CCL3* and *CCL4* encoding small CC chemokines known as macrophage inflammatory protein 1α and 1β, respectively, were well-recognized as key mediators of both diabetes and atherosclerotic cardiovascular disease⁴⁸. Elevated expression levels of both *CCL3* and *CCL4* were found in atherosclerotic lesions in *ApoE*^{-/-} mice⁴⁹. Leukocyte-derived *CCL3* can induce neutrophil chemotaxis toward the atherosclerotic plaque, causing accelerated lesion formation⁵⁰. *CCL4* was also upregulated in atherosclerotic plaques in stroke patients⁵¹. *NR1D1* is also a candidate gene for CAD. It is located 600 kb from marker D17S1299, encodes a member of the nuclear receptor superfamily and regulates genes involved in triglyceride metabolism, inflammatory and the pathogenesis of atherosclerosis⁵². *NR1D1* can regulate apolipoprotein APOC3 via binding to the proximal promoter⁵³. Future studies may focus on these strong candidate genes to identify causative genes that contribute to the risk of CAD in families.

The second most significant linkage for CAD on 7p22.2 was identified with marker D7S3056 at a position of 7.44 cM (physical position: 4.49 Mb) with two-point NPL score of 5.19 and a multipoint NPL score of 4.74 (Table 2). This is a novel locus for CAD. No GWAS variants were found to be located within the 7p22.2 locus. The closest GWAS SNP for CAD was rs2023938 in *HDAC9*, which is located at 7p21.1¹³. There are 87 unique RefSeq

CAD Locus (Genetic Map ^a)	Genomic Region ^b	RefSeq Genes ^c	Genes Related to Cardiovascular diseases ^d
17q21.2 (56.9–83.1 cM)	34.40–57.50 Mb	514	<i>CCL3, CCL4, CCL3L3, CCL4L1, CCL4L2, CCL3L1, TADA2A, PLXDC1, TCAP, PNMT, PGAP3, ERBB2, IKZF3, CSF3, MED24, THRA, NR1D1, CCR7, KRT12, KRT20, GAST, HAP1, JUP, FKBP10, CNP, KCNH4, HCRT, STAT5B, STAT5A, STAT3, ATP6V0A1, MLX, RAMP2, WNK4, BECN1, AOC3, BRCA1, SOST, PYY, G6PC3, HDAC5, GRN, ITGA2B, FZD2, ADAM11, GJC1, CCDC103, GFAP, HEXIM1, MAP3K14, CRHR1, MAPT, WNT3, GOSR2, MYL4, ITGB3, MRPL10, PNPO, MIR10A, UBE2Z, GIP, IGF2BP1, B4GALNT2, ZNF652, NGFR, ITGA3, PDK2, SGCA, COL1A1, XYLT2, CACNA1G, LUC7L3, NME1, MMD, AKAP1, MPO, MIR142</i>
7p22.2 (1.4–13.0 cM)	0.88–7.25 Mb	87	<i>GPBR1, MAFK, NUDT1, GNA12, SDK1, ACTB, AIMP2, EIF2AK1, RAC1</i>
2q33.3 191.9–202.4 cM	177.33–192.47 Mb	88	<i>NFE2L2, PDE11A, RBM45, TTN, CCDC141, ZNF385B, ITGA4, NEUROD1, PDE1A, FRZB, ITGAV, ZSWIM2, CALCRL, TFPI, COL3A1, COL5A2, SLC40A1, PMS1, MSTN, STAT1, STAT4</i>
3q29 (206.5–216.0 cM)	188.96–193.86 Mb	31	<i>TP63, CLDN16, UTS2B, HRASLS, OPA1</i>
5q13.2 (74.9–80.0 cM)	66.68–71.63 Mb	39	<i>PIK3R1, CCNB1, OCLN, SMN2, SMN1, NAIP, MCCC2, CARTPT</i>
9q22.33(103.6–105.3 cM)	101.72–104.22 Mb	20	<i>TGFBF1, NR4A3, INVS</i>

Table 5. Summary of RefSeq Genes Related to Cardiovascular Diseases Under Each Linkage for CAD in the Combined GenQuest II Families. ^aGenetic map based on the Marshfield Medical Genetics database (<http://research.marshfieldclinic.org/genetics/GeneticResearch/screeningsets.asp>). ^bPhysical map based on hg19 by Adam Auton in 1000 Genome project (<https://github.com/joepickrell/1000-genomes-genetic-maps>). ^cRefSeq genes retrieved from the UCSC RefSeq database (Track: RefSeq Genes; assembly: GRCH37/hg19). ^dRelated genes were explored using program DisGeNet. Any gene-disease pair with a score of >0.001 was defined as a valid hit.

genes located within the 7p22.2 locus (0.88 Mb to 7.22 Mb). DisGenNET analysis identified 9 genes related to cardiovascular diseases (Table 5). *SDK1* was found to be associated with hypertension in the Japanese population⁵⁴. *GPBR1* encodes a multi-pass membrane protein that is localized to the endoplasmic reticulum and *Gper1* knockout mice showed increased atherosclerosis progress and vascular inflammation^{55,56}.

The 2q33.3 locus, represented by marker D2S1384 at 200.43 cM (physical position: 205.23 Mb), covers a genomic region of 15.14 Mb (Table 2 and Fig. 2). GWAS found that SNP rs6725887 in *WDR12*, which is only 1.48 Mb from marker D2S1384, was associated with early-onset MI and ischemic stroke^{7,12,57} at a genome-wide significance level. Moreover, DisGenNET analysis identified 21 genes related to cardiovascular disease (Table 3). *PDE1A* encodes a cyclic nucleotide phosphodiesterase and differential expression of *PDE1A* was observed in human epicardial adipose tissues from male patients affected with CAD⁵⁸. *TFPI* encodes a tissue factor (TF)-dependent pathway of blood coagulation⁵⁹. An elevated plasma TFPI level was significantly associated with the presence and severity of CAD^{60,61}. *TFPI* expression can be regulated by *ADTRP*, a CAD susceptibility gene identified by our group¹⁷.

The 5q13.2 locus was mapped at marker GATA138B05 at 78.80 cM (or 71.40 Mb) and spanned an interval of 5.1 cM (4.95 Mb) (Fig. 2). This is a novel locus for CAD. DisGenNET analysis identified 8 genes linked to cardiovascular diseases at the 5q13.2 locus (Table 5). *PIK3R1* encodes Phosphoinositide-3-Kinase Regulatory Subunit 1 and was predicted to be a cardiovascular disease-related gene by a network topology analysis⁶². *PIK3R1* is a target of miR-221, and a recent small RNA sequencing analysis revealed that the *miR-221-PIK3R1* pair was deregulated in late endothelial progenitor cells (late EPCs) of CAD patients⁶³. *CCNB1* encodes a regulatory protein involved in mitosis and a recent study showed that genetic variants in *CCNB1* contributed to risk of the restenosis of intracoronary stents⁶⁴.

The compelling results above demonstrated that linkage analysis with fewer but larger pedigrees can achieve comparable performance with hundreds of small nuclear families. As shown in Table 2, the 3q29 and 9q22.33 CAD loci were identified by both GWLS with 24 large families (GeneQuest II) and by a similar analysis with 428 nuclear families in the GeneQuest population⁴⁰. Our results also demonstrate that GWLA has a comparable power to GWAS. The 2q33.3 and 17q21.2 CAD loci, which were identified by the GWLS with 24 large families here (GeneQuest II) and represented by D2S1384 and D17S1299, respectively, contain CAD-risk SNPs identified by GWAS (rs6725887 at 2q33.3 and rs46522 at 17q21.2) (Table 2, Figs 2 and 3). Therefore, we conclude that increasing family members within individual families can markedly improve the power for identifying disease linkage and loci. These data also suggest that our GeneQuest II database is a promising resource for identifying novel risk genes for CAD. Future studies on fine mapping and targeted sequencing will uncover causative variants or genes for CAD at the CAD loci identified in this study.

We also carried out genome-wide linkage analysis in each GeneQuest II family and found that each of the six significant CAD loci identified in the combined family cohort (Table 1) were also identified in at least one individual family (Table 3). For example, the top two CAD loci on chromosomes 17q21.2 and 2p22.2 were observed in two families (the best NPL score = 16.81) and three individual families (the best NPL score = 12.42), respectively. Moreover, individual family-based analyses also identified 15 new, significant linkages in 5 families that were not captured by joint linkage analyses of 24 GeneQuest II families, including 7 highly significant linkages, 2 significant linkages, and 6 suggestive significant linkages (Table 4). None of the 15 new genetic loci have been previously reported for CAD. Of interest, the two top ranked CAD loci on 12q13.13, represented by D12S297 (multipoint NPL score = 6.76) and 17q22 represented by D17S1290 (multipoint NPL score = 6.51), were linked to CAD-associated traits of body mass index (BMI)⁶⁵ and metabolic factors⁶⁶.

Despite a list of significant CAD loci identified in this study, there were several limitations. First, the density of microsatellite markers in this study was low (10 cM per marker). Future fine mapping studies may be carried out with additional markers surrounding the microsatellite polymorphisms used for linkage analysis or SNP microarrays with a much increased marker density. Single SNPs may not be as informative as microsatellite markers for linkage analysis due to their bi-allelic status, but haplotypes constructed using multiple SNPs may be considered as multi-allelic markers⁶⁷. Fine mapping will confirm that the linkage loci are overlapping in different families, shorten and narrow the linked regions (if shared) and eventually reduce the number of candidate genes for some loci. Moreover, fine mapping with SNP arrays may allow us to compare the SNP linkage data with the top hits from previous GWAS and identify new SNPs associated with CAD. Similarly, ongoing whole genome sequencing may be another powerful approach to capture SNPs or causal variants associated with CAD in the 24 GeneQuest II families. Second, we highlighted 3–77 genes at each CAD locus based on the evidence from existing literature with a purpose to illustrate the relevance of each CAD locus to etiological process of CAD. However, the CAD causal genes being responsible for each linkage were possibly overlooked in this study (Table 5). Third, the 24 GeneQuest II families were of European descent, and it is likely that some significant CAD loci may not be expanded to other ethnic populations.

In summary, we report the results of a genome-wide linkage scan of 24 large GeneQuest II families and uncover six genetic loci for CAD on chromosomes 2q33.3, 3q29, 5q13.2, 7p22.2, 9q22.33 and 17q21.2. Our study identifies four novel CAD loci (2q33.3, 5q13.2, 7p22.2 and 17q21.2). Similar analysis in individual families confirmed the six significant CAD loci and also identified nine new significant linkages on 2q11.2, 9p24.2, 9q34.2, 11q14.1, 12q13.13, 15q26.1, 17q22, 20p12.3, and 22q12.1. Our study also independently confirms the 3q29 and 9q22.33 CAD loci identified by our earlier genome-wide linkage scan for CAD in 428 nuclear families. Two loci on 2q33.3 and 17q21.2 contain GWAS risk variants identified from population samples. These studies may provide a new framework for uncovering causative variants, genes and biological pathways involved in the pathogenesis of CAD.

Methods

Study participants. Twenty-four large, extended, and multigenerational CAD families were recruited at the Center for Cardiovascular Genetics of the Cleveland Clinic. The study was referred to as GeneQuest II to distinguish it from the original GeneQuest study which recruited more than 428 nuclear families, mostly for sib-pair analysis. The GeneQuest II study started in the year of 2001 and is completely independent from the earlier GeneQuest study carried out between 1995 and 2000. This study was reviewed and approved by the Cleveland Clinic Institutional Review Board (IRB) on Human Subject Research, and conformed to the guidelines set forth by the Declaration of Helsinki. Written informed consent was obtained from all participants.

Clinical phenotypic evaluation of study participants was carefully carried out by a panel of cardiologists. The presence or absence of CAD was assessed according to coronary angiography with >70% stenosis, a history of revascularization procedures such as percutaneous coronary angioplasty (PCA) or coronary artery bypass (CABG), and a previous diagnosis of myocardial infarction (MI) as described^{35, 68, 69}. Families or patients with hypercholesterolemia, insulin-dependent diabetes, childhood hypertension, and congenital heart disease were excluded from this study. Each family has at least four definitely diagnosed CAD patients; and the average pedigree size was 18. Clinical and demographic features of the 24 GeneQuest II CAD families with 433 family members are summarized in Table 1. All recruited family members were Caucasians. The distinguishing features for the GeneQuest II cohort are large families with three or more generations, 100% whites and a well-balanced male versus female ratio (209/224). A total of 398 sibling pairs were generated in this cohort, including 154 sister/sister pairs, 105 brother/brother pairs and 139 brother/sister pairs. In contrast to sib-pair analysis of 428 nuclear families in our previous study⁴⁰, genome-wide linkage analysis was carried out using all family members instead of sibling pairs only, given the large pedigrees collected in GeneQuest II (Fig. 1).

Extraction of human genomic DNA and genotyping. Whole blood samples were drawn from each study participant. Genomic DNA was isolated using the Genra Puregene blood (QIAGEN, Valencia, CA, USA). All DNA samples were quantified using NanoDrop 2000 (Thermo Scientific, Wilmington, DE, USA) and inspected for quality by agarose gel electrophoresis.

Genome-wide genotyping was performed by Mammalian Genotyping Service of the National Heart, Lung, and Blood Institute directed by Dr. James L. Weber at Center for Medical Genetics at Marshfield Clinic (<http://research.marshfieldclinic.org/genetics/GeneticResearch/screeningsets.asp>) using Screening Set 11. The screening set consists of 410 microsatellite markers spanning the whole human genome by every 10 cM on average.

Linkage analysis. Prior to linkage analysis, raw genotyping data were cleaned as described in our previous studies^{35, 40}. In brief, genotypes with non-consensus calls were re-genotyped or deleted. Microsatellite markers on sex chromosomes were excluded. Missing parental genotypes were added and treated as missing values to complete family pedigrees (Fig. 1) for linkage analysis. Mendelian inconsistencies were detected by using MARKERINFO built in software S.A.G.E (Statistical Analysis for Genetic Epidemiology)⁷⁰. Genotypes with Mendelian errors were excluded from further genome-wide linkage analysis by Genehunter version 2.1_r2 beta⁷¹. Relationship between family members (i.e., sibling pairs, parents-offspring trios) within each family was verified by the RELTEST program included in the S.A.G.E software page⁷⁰. The RELTEST program did not detect any inconsistent family relationship. Allele frequencies for all microsatellite markers were estimated by module FREQ in S.A.G.E in the pooled samples containing all of our existing family studies. Program Mega2⁷² was used to generate the input format required for Genehunter version 2.1_r2 beta⁷¹. Affected and unaffected individuals were coded as “2” and “1”, respectively, whereas individuals with uncertain phenotype were coded as “0”.

The principle of the Genehunter linkage analysis is to examine any excess of identity-by-descent⁷³ allele-sharing between all affected subjects within a family. We used the NPL-all statistic within Genehunter version 2.1_r2 beta for linkage analysis, which examines all individuals in the 24 GeneQuest II families simultaneously and provides a more powerful test (www.broad.mit.edu/ftp/distribution/software/genehunter/). Without specifying the disease transmission model for all markers, non-parametric linkage (NPL) analysis was carried out to jointly analyze genotype data of all 24 GeneQuest II families. The linkage between CAD and a genetic marker was evaluated by calculating NPL score Z, which is the summation of standardized identity-by-descent allele-sharing scores across multiple families. Under a null hypothesis of no linkage, Z has mean 0 and variance 1 by choosing appropriate weighting factors. Statistical significance of Z can be inferred by comparing the observed Z against its null distribution. Two types of NPL scores were calculated for each marker: 1) A two-point NPL score examined whether a single marker was linked to CAD; 2) A multipoint NPL score investigated whether a group of markers were linked to CAD. The advantage of the multipoint approach is its capability of incorporating the information of adjacent markers into linkage analysis (making markers more informative). The NPL-all linkage analysis was also carried out individually in each of the 24 GeneQuest II families. The larger a NPL score is, the stronger the linkage it indicates. As suggested by Lander and Kruglyak⁷⁴, linkage peaks were defined in three categories: (1) Highly significant linkage: NPL of 4.99 (or *P* value of 3×10^{-7}); (2) Significant linkage: NPL of 4.08 (or *P* value of 2.2×10^{-5}); (3) Suggestive Linkage: NPL of 3.18 (or *P* value of 7.4×10^{-4}).

Public resources. UCSC database: <http://genome.ucsc.edu/>.

DisGenNET⁴²: <http://www.disgenet.org/web/DisGenNET/menu/home>.

GTex⁴⁷ portal: <http://gtexportal.org/home/>.

Genetic map of microsatellite markers: <http://research.marshfieldclinic.org/genetics/GeneticResearch/screeningsets.asp>.

Physical map based on hg19: <https://github.com/joepickrell/1000-genomes-genetic-maps>.

Genehunter version 2.1_r2 beta: www.broad.mit.edu/ftp/distribution/software/genehunter/.

References

- McPherson, R. & Tybjaerg-Hansen, A. Genetics of Coronary Artery Disease. *Circ Res* **118**, 564–578, doi:10.1161/CIRCRESAHA.115.306566 (2016).
- Lusis, A. J. Genetics of atherosclerosis. *Trends Genet* **28**, 267–275, doi:10.1016/j.tig.2012.03.001 (2012).
- Lusis, A. J. Atherosclerosis. *Nature* **407**, 233–241, doi:10.1038/35025203 (2000).
- Clarke, R. *et al.* Genetic variants associated with Lp(a) lipoprotein level and coronary disease. *N Engl J Med* **361**, 2518–2528, doi:10.1056/NEJMoa0902604 (2009).
- Erdmann, J. *et al.* New susceptibility locus for coronary artery disease on chromosome 3q22.3. *Nat Genet* **41**, 280–282, doi:10.1038/ng.307 (2009).
- Gudbjartsson, D. F. *et al.* Sequence variants affecting eosinophil numbers associate with asthma and myocardial infarction. *Nat Genet* **41**, 342–347, doi:10.1038/ng.323 (2009).
- Myocardial Infarction Genetics, C. *et al.* Genome-wide association of early-onset myocardial infarction with single nucleotide polymorphisms and copy number variants. *Nat Genet* **41**, 334–341, doi:10.1038/ng.327 (2009).
- Trégouët, D.-A. *et al.* Genome-wide haplotype association study identifies the SLC22A3-LPAL2-LPA gene cluster as a risk locus for coronary artery disease. *Nature genetics* **41**, 283–285 (2009).
- Consortium, I. K. C. Large-scale gene-centric analysis identifies novel variants for coronary artery disease. *PLoS Genet* **7**, e1002260, doi:10.1371/journal.pgen.1002260 (2011).
- Erdmann, J. *et al.* Genome-wide association study identifies a new locus for coronary artery disease on chromosome 10p11.23. *Eur Heart J* **32**, 158–168, doi:10.1093/eurheartj/ehq405 (2011).
- Reilly, M. P. *et al.* Identification of ADAMTS7 as a novel locus for coronary atherosclerosis and association of ABO with myocardial infarction in the presence of coronary atherosclerosis: two genome-wide association studies. *The Lancet* **377**, 383–392 (2011).
- Schunkert, H. *et al.* Large-scale association analysis identifies 13 new susceptibility loci for coronary artery disease. *Nat Genet* **43**, 333–338, doi:10.1038/ng.784 (2011).
- Consortium, C. A. D. *et al.* Large-scale association analysis identifies new risk loci for coronary artery disease. *Nat Genet* **45**, 25–33, doi:10.1038/ng.2480 (2013).
- Nikpay, M. *et al.* A comprehensive 1,000 Genomes-based genome-wide association meta-analysis of coronary artery disease. *Nat Genet* **47**, 1121–1130, doi:10.1038/ng.3396 (2015).
- Lette, G. *et al.* Genome-wide association study of coronary heart disease and its risk factors in 8,090 African Americans: the NHLBI CARE Project. *PLoS Genet* **7**, e1001300, doi:10.1371/journal.pgen.1001300 (2011).
- Aoki, A. *et al.* SNPs on chromosome 5p15.3 associated with myocardial infarction in Japanese population. *J Hum Genet* **56**, 47–51, doi:10.1038/jhg.2010.141 (2011).
- Wang, F. *et al.* Genome-wide association identifies a susceptibility locus for coronary artery disease in the Chinese Han population. *Nat Genet* **43**, 345–349, doi:10.1038/ng.783 (2011).
- Lu, X. *et al.* Genome-wide association study in Han Chinese identifies four new susceptibility loci for coronary artery disease. *Nat Genet* **44**, 890–894, doi:10.1038/ng.2337 (2012).
- Takeuchi, F. *et al.* Genome-wide association study of coronary artery disease in the Japanese. *Eur J Hum Genet* **20**, 333–340, doi:10.1038/ejhg.2011.184 (2012).
- Lee, J. Y. *et al.* A genome-wide association study of a coronary artery disease risk variant. *J Hum Genet* **58**, 120–126, doi:10.1038/jhg.2012.124 (2013).
- Hirokawa, M. *et al.* A genome-wide association study identifies PLCL2 and AP3D1-DOT1L-SF3A2 as new susceptibility loci for myocardial infarction in Japanese. *European Journal of Human Genetics* **23**, 374–380 (2015).
- Coronary Artery Disease Genetics, C. A genome-wide association study in Europeans and South Asians identifies five new loci for coronary artery disease. *Nat Genet* **43**, 339–344, doi:10.1038/ng.782 (2011).
- Howie, B., Fuchsberger, C., Stephens, M., Marchini, J. & Abecasis, G. R. Fast and accurate genotype imputation in genome-wide association studies through pre-phasing. *Nat Genet* **44**, 955–959, doi:10.1038/ng.2354 (2012).
- van Leeuwen, E. M. *et al.* Population-specific genotype imputations using minimac or IMPUTE2. *Nat Protoc* **10**, 1285–1296, doi:10.1038/nprot.2015.077 (2015).
- Browning, B. L. & Browning, S. R. Genotype Imputation with Millions of Reference Samples. *Am J Hum Genet* **98**, 116–126, doi:10.1016/j.ajhg.2015.11.020 (2016).

26. Chan, L. & Boerwinkle, E. Gene-environment interactions and gene therapy in atherosclerosis. *Cardiology in Review* **2**, 130–137 (1994).
27. Ozaki, K. & Tanaka, T. Molecular genetics of coronary artery disease. *J Hum Genet* **61**, 71–77, doi:10.1038/jhg.2015.70 (2016).
28. Pajukanta, P. *et al.* Two loci on chromosomes 2 and X for premature coronary heart disease identified in early- and late-settlement populations of Finland. *Am J Hum Genet* **67**, 1481–1493, doi:10.1086/316902 (2000).
29. Francke, S. *et al.* A genome-wide scan for coronary heart disease suggests in Indo-Mauritians a susceptibility locus on chromosome 16p13 and replicates linkage with the metabolic syndrome on 3q27. *Hum Mol Genet* **10**, 2751–2765 (2001).
30. Broeckel, U. *et al.* A comprehensive linkage analysis for myocardial infarction and its related risk factors. *Nat Genet* **30**, 210–214, doi:10.1038/ng827 (2002).
31. Harrap, S. B. *et al.* Genome-wide linkage analysis of the acute coronary syndrome suggests a locus on chromosome 2. *Arterioscler Thromb Vasc Biol* **22**, 874–878 (2002).
32. Wang, L., Fan, C., Topol, S. E., Topol, E. J. & Wang, Q. Mutation of MEF2A in an inherited disorder with features of coronary artery disease. *Science* **302**, 1578–1581, doi:10.1126/science.1088477 (2003).
33. Hauser, E. R. *et al.* A genomewide scan for early-onset coronary artery disease in 438 families: the GENECARD Study. *Am J Hum Genet* **75**, 436–447, doi:10.1086/423900 (2004).
34. Helgadottir, A. *et al.* The gene encoding 5-lipoxygenase activating protein confers risk of myocardial infarction and stroke. *Nat Genet* **36**, 233–239, doi:10.1038/ng1311 (2004).
35. Wang, Q. *et al.* Premature myocardial infarction novel susceptibility locus on chromosome 1P34–36 identified by genomewide linkage analysis. *Am J Hum Genet* **74**, 262–271, doi:10.1086/381560 (2004).
36. Samani, N. J. *et al.* A genomewide linkage study of 1,933 families affected by premature coronary artery disease: The British Heart Foundation (BHF) Family Heart Study. *Am J Hum Genet* **77**, 1011–1020, doi:10.1086/498653 (2005).
37. Farrall, M. *et al.* Genome-wide mapping of susceptibility to coronary artery disease identifies a novel replicated locus on chromosome 17. *PLoS Genet* **2**, e72, doi:10.1371/journal.pgen.0020072 (2006).
38. Mani, A. *et al.* LRP6 mutation in a family with early coronary disease and metabolic risk factors. *Science* **315**, 1278–1282, doi:10.1126/science.1136370 (2007).
39. Engert, J. C. *et al.* Identification of a chromosome 8p locus for early-onset coronary heart disease in a French Canadian population. *Eur J Hum Genet* **16**, 105–114, doi:10.1038/sj.ejhg.5201920 (2008).
40. Gao, H. *et al.* Genome-wide linkage scan identifies two novel genetic loci for coronary artery disease: in GeneQuest families. *PLoS One* **9**, e113935, doi:10.1371/journal.pone.0113935 (2014).
41. Ogut, F., Bian, Y., Bradbury, P. J. & Holland, J. B. Joint-multiple family linkage analysis predicts within-family variation better than single-family analysis of the maize nested association mapping population. *Heredity (Edinb)* **114**, 552–563, doi:10.1038/hdy.2014.123 (2015).
42. Bauer-Mehren, A., Rautschka, M., Sanz, F. & Furlong, L. I. DisGeNET: a Cytoscape plugin to visualize, integrate, search and analyze gene-disease networks. *Bioinformatics* **26**, 2924–2926, doi:10.1093/bioinformatics/btq538 (2010).
43. Pinero, J. *et al.* DisGeNET: a discovery platform for the dynamical exploration of human diseases and their genes. *Database (Oxford)* **2015**, bav028, doi:10.1093/database/bav028 (2015).
44. Chiodini, B. D. & Lewis, C. M. Meta-analysis of 4 coronary heart disease genome-wide linkage studies confirms a susceptibility locus on chromosome 3q. *Arterioscler Thromb Vasc Biol* **23**, 1863–1868, doi:10.1161/01.ATV.0000093281.10213.DB (2003).
45. Watanabe, T., Kanome, T., Miyazaki, A. & Katagiri, T. Human urotensin II as a link between hypertension and coronary artery disease. *Hypertens Res* **29**, 375–387, doi:10.1291/hyres.29.375 (2006).
46. Wang, X. L., Liu, S. X. & Wilcken, D. E. Circulating transforming growth factor beta 1 and coronary artery disease. *Cardiovasc Res* **34**, 404–410 (1997).
47. Consortium, G. T. The Genotype-Tissue Expression (GTEx) project. *Nat Genet* **45**, 580–585, doi:10.1038/ng.2653 (2013).
48. Chang, T. T. & Chen, J. W. Emerging role of chemokine CC motif ligand 4 related mechanisms in diabetes mellitus and cardiovascular disease: friends or foes? *Cardiovasc Diabetol* **15**, doi:10.1186/s12933-016-0439-9 (2016).
49. Moos, M. P. *et al.* The lamina adventitia is the major site of immune cell accumulation in standard chow-fed apolipoprotein E-deficient mice. *Arterioscler Thromb Vasc Biol* **25**, 2386–2391, doi:10.1161/01.ATV.0000187470.31662.fe (2005).
50. de Jager, S. C. A. *et al.* Leukocyte-Specific CCL3 Deficiency Inhibits Atherosclerotic Lesion Development by Affecting Neutrophil Accumulation. *Arterioscler Thromb Vas* **33**, E75–+, doi:10.1161/Atvbaha.112.300857 (2013).
51. Montecucco, F. *et al.* Systemic and Intraplaque Mediators of Inflammation Are Increased in Patients Symptomatic for Ischemic Stroke. *Stroke* **41**, 1394–1404, doi:10.1161/Strokeaha.110.578369 (2010).
52. Ma, H. *et al.* Increased atherosclerotic lesions in LDL receptor deficient mice with hematopoietic nuclear receptor Rev-erbalpha knock-down. *J Am Heart Assoc* **2**, e000235, doi:10.1161/JAHA.113.000235 (2013).
53. Coste, H. & Rodriguez, J. C. Orphan nuclear hormone receptor Rev-erbalpha regulates the human apolipoprotein CIII promoter. *J Biol Chem* **277**, 27120–27129, doi:10.1074/jbc.M203421200 (2002).
54. Oguri, M. *et al.* Assessment of a polymorphism of SDK1 with hypertension in Japanese Individuals. *Am J Hypertens* **23**, 70–77, doi:10.1038/ajh.2009.190 (2010).
55. Meyer, M. R. *et al.* Erratum: G Protein-coupled Estrogen Receptor Protects from Atherosclerosis. *Sci Rep* **5**, 13510, doi:10.1038/srep13510 (2015).
56. Meyer, M. R. *et al.* G protein-coupled estrogen receptor protects from atherosclerosis. *Sci Rep* **4**, 7564, doi:10.1038/srep07564 (2014).
57. Dichgans, M. *et al.* Shared genetic susceptibility to ischemic stroke and coronary artery disease: a genome-wide analysis of common variants. *Stroke* **45**, 24–36, doi:10.1161/STROKEAHA.113.002707 (2014).
58. Guaque-Olarte, S. *et al.* The transcriptome of human epicardial, mediastinal and subcutaneous adipose tissues in men with coronary artery disease. *PLoS One* **6**, e19908, doi:10.1371/journal.pone.0019908 (2011).
59. Mukherjee, M. *et al.* Anticoagulant versus amidolytic activity of tissue factor pathway inhibitor in coronary artery disease. *Blood Coagul Fibrinolysis* **11**, 285–291 (2000).
60. Lima, L. M. *et al.* Tissue factor and tissue factor pathway inhibitor levels in coronary artery disease: correlation with the severity of atheromatosis. *Thromb Res* **121**, 283–287, doi:10.1016/j.thromres.2007.04.013 (2007).
61. Morange, P. E. *et al.* Prognostic value of plasma tissue factor and tissue factor pathway inhibitor for cardiovascular death in patients with coronary artery disease: the AtheroGene study. *J Thromb Haemost* **5**, 475–482, doi:10.1111/j.1538-7836.2006.02372.x (2007).
62. Sarajlic, A., Janjic, V., Stojkovic, N., Radak, D. & Przulj, N. Network topology reveals key cardiovascular disease genes. *PLoS One* **8**, e71537, doi:10.1371/journal.pone.0071537 (2013).
63. Chang, T. Y. *et al.* miRNome traits analysis on endothelial lineage cells discloses biomarker potential circulating microRNAs which affect progenitor activities. *BMC Genomics* **15**, 802, doi:10.1186/1471-2164-15-802 (2014).
64. Silvestre-Roig, C. *et al.* Genetic variants in CCNB1 associated with differential gene transcription and risk of coronary in-stent restenosis. *Circ Cardiovasc Genet* **7**, 59–70, doi:10.1161/CIRCGENETICS.113.000305 (2014).
65. Norris, J. M. *et al.* Quantitative trait loci for abdominal fat and BMI in Hispanic-Americans and African-Americans: the IRAS Family study. *Int J Obes (Lond)* **29**, 67–77, doi:10.1038/sj.ijo.0802793 (2005).
66. Cheng, C. Y. *et al.* Genome-wide linkage analysis of multiple metabolic factors: evidence of genetic heterogeneity. *Obesity (Silver Spring)* **18**, 146–152, doi:10.1038/oby.2009.142 (2010).

67. Flaquer, A. *et al.* Genome-wide linkage analysis of congenital heart defects using MOD score analysis identifies two novel loci. *BMC Genet* **14**, 44, doi:10.1186/1471-2156-14-44 (2013).
68. McCarthy, J. J. *et al.* Large scale association analysis for identification of genes underlying premature coronary heart disease: cumulative perspective from analysis of 111 candidate genes. *J Med Genet* **41**, 334–341 (2004).
69. Shen, G. Q. *et al.* An LRP8 variant is associated with familial and premature coronary artery disease and myocardial infarction. *Am J Hum Genet* **81**, 780–791, doi:10.1086/521581 (2007).
70. Kong, X. *et al.* A combined linkage-physical map of the human genome. *Am J Hum Genet* **75**, 1143–1148, doi:10.1086/426405 (2004).
71. Li, H. & Schaid, D. J. GENEHUNTER: application to analysis of bipolar pedigrees and some extensions. *Genet Epidemiol* **14**, 659–663, doi:10.1002/(SICI)1098-2272 (1997).
72. Baron, R. V., Kollar, C., Mukhopadhyay, N. & Weeks, D. E. Mega2: validated data-reformatting for linkage and association analyses. *Source Code Biol Med* **9**, 26, doi:10.1186/s13029-014-0026-y (2014).
73. Beaudoin, M. *et al.* Deep resequencing of GWAS loci identifies rare variants in CARD9, IL23R and RNF186 that are associated with ulcerative colitis. *PLoS Genet* **9**, e1003723, doi:10.1371/journal.pgen.1003723 (2013).
74. Lander, E. & Kruglyak, L. Genetic dissection of complex traits: guidelines for interpreting and reporting linkage results. *Nat Genet* **11**, 241–247, doi:10.1038/ng1195-241 (1995).

Acknowledgements

We thank the patients and their relatives for their enthusiastic participation in the study. We thank Annabel Z. Wang for proofreading the manuscript and corrections of spelling and grammar errors. This study was supported by NIH/NHLBI grants R01 HL121358 and R01 HL126729, the China National Natural Science Foundation grants (91439129 and 31430047), the Chinese National Basic Research Programs (973 Programs 2013CB531101 and 2012CB517801), Hubei Province Natural Science Key Program (2014CFA074), Hubei Province's Outstanding Medical Academic Leader Program, and Specialized Research Fund for the Doctoral Program of Higher Education from the Ministry of Education. We thank J. Weber and the NHLBI Mammalian Genotyping Service for genotyping.

Author Contributions

Q.C. E.J.T. and Q.K.W. conceived and designed the experiments. Y.G., F.W., L.L., H.Z., H.X. performed all data analysis, reports and interpretation. S.E., C.H., E.J.T., Q.C. and Q.K.W. participated in sample collection. Y.G., F.W., L.L., H.Z., H.X., Q.C. and Q.K.W. drafted the manuscript. S.A., I.Z.W., J.B., S.E., C.H., E.J.T. Q.C., and Q.K.W. contributed critical comments and revised the manuscript. All authors have reviewed and approved the final version of the manuscript.

Additional Information

Competing Interests: The authors declare that they have no competing interests.

Publisher's note: Springer Nature remains neutral with regard to jurisdictional claims in published maps and institutional affiliations.



Open Access This article is licensed under a Creative Commons Attribution 4.0 International License, which permits use, sharing, adaptation, distribution and reproduction in any medium or format, as long as you give appropriate credit to the original author(s) and the source, provide a link to the Creative Commons license, and indicate if changes were made. The images or other third party material in this article are included in the article's Creative Commons license, unless indicated otherwise in a credit line to the material. If material is not included in the article's Creative Commons license and your intended use is not permitted by statutory regulation or exceeds the permitted use, you will need to obtain permission directly from the copyright holder. To view a copy of this license, visit <http://creativecommons.org/licenses/by/4.0/>.

© The Author(s) 2017