

**A. Kamalanathan**

**C. K. Lee**

**S. A. Zakaria**

Sungai Buloh Hospital, Ministry of Health,  
Malaysia

**C. Y. Wang**

University of Malaya,  
Kuala Lumpur, Malaysia

The study was prospectively registered on the ClinicalTrials.gov registry (NCT04362319). We thank the Director General of Health, Malaysia, for his permission to publish this article. No competing interests declared.

**References**

1. Heath C, Sommerfield A, von Ungern-Sternberg BS. Resilience strategies to manage psychological distress amongst healthcare workers during the COVID-19 pandemic: a narrative review. *Anaesthesia* 2020; **75**: 1364–71.
2. Dzau VJ, Kirch D, Nasca T. Preventing a parallel pandemic—a national strategy to protect clinicians’ well-being. *New England Journal of Medicine* 2020; **383**: 513–5.
3. Meng L, Qiu H, Wan L, et al. Intubation and ventilation amid the COVID-19 outbreak: Wuhan’s experience. *Anesthesiology* 2020; **132**: 1317–32.
4. Ram BS. Health Ministry ready to face surge in Covid-19 cases. *New Straits Times* 9 March 2020. <https://www.nst.com.my/news/nation/2020/03/573205/health-ministry-ready-face-surge-covid-19-cases> (assessed 19/04/20).

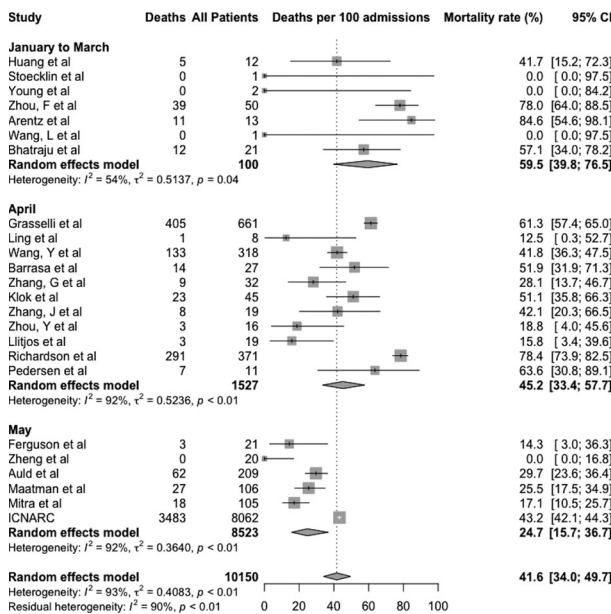
doi:10.1111/anae.15231

# Decreasing mortality rates in ICU during the COVID-19 pandemic

We would like to thank the readers of *Anaesthesia* for their interest in our recent systematic review and meta-analysis of intensive care unit (ICU) mortality in patients with COVID-19, in which we found that reported mortality rates have fallen as the pandemic has progressed [1]. The process of post-publication peer review has highlighted that we could have

presented the changes in mortality rate over time more clearly.

Combined ICU mortality (95%CI) was 59.5% (39.8–76.5%) in studies published before the end of March 2020 and 41.6% (34.0–49.7%) for all included studies to the end of June 2020. Figure 1 was not included in the original published manuscript or supplementary material, but we include it here to provide a clear illustration of the reported mortality rate for completed intensive care admissions over the course of the pandemic.



**Figure 1** Forest plot of ICU COVID-19 deaths per 100 completed intensive care admissions, grouped by month of publication (January to March, April, May), and combined. Values are proportions (95%CI).

**R. A. Armstrong**

Severn Deanery,  
Bristol, UK

**A. D. Kane**

James Cook University Hospital,  
Middlesbrough, UK

**T. M. Cook**

Royal United Hospitals Bath NHS Foundation Trust,  
Bath, UK

Email: timcook007@googlemail.com

No competing interests declared.

**Reference**

1. Armstrong RA, Kane AD, Cook TM. Outcomes from intensive care in patients with COVID-19: a systematic review and meta-analysis of observational studies. *Anaesthesia* 2020; **75**: 1340–9.

doi:10.1111/anae.15230