



Diffusion of a disordered protein on its folded ligand

Felix Wiggers^a, Samuel Wohl^b, Artem Dubovetskyi^b, Gabriel Rosenblum^a, Wenwei Zheng^{c,1}, and Hagen Hofmann^{a,1}

^aDepartment of Chemical and Structural Biology, Weizmann Institute of Science, 76100 Rehovot, Israel; ^bDepartment of Physics, Arizona State University, Tempe, AZ 85287; and ^cCollege of Integrative Sciences and Arts, Arizona State University, Mesa, AZ 85212

Edited by Attila Szabo, NIH, Bethesda, MD, and approved July 27, 2021 (received for review May 6, 2021)

Intrinsically disordered proteins often form dynamic complexes with their ligands. Yet, the speed and amplitude of these motions are hidden in classical binding kinetics. Here, we directly measure the dynamics in an exceptionally mobile, high-affinity complex. We show that the disordered tail of the cell adhesion protein E-cadherin dynamically samples a large surface area of the proto-oncogene β -catenin. Single-molecule experiments and molecular simulations resolve these motions with high resolution in space and time. Contacts break and form within hundreds of microseconds without a dissociation of the complex. The energy landscape of this complex is rugged with many small barriers (3 to 4 $k_B T$) and reconciles specificity, high affinity, and extreme disorder. A few persistent contacts provide specificity, whereas unspecific interactions boost affinity.

IDP | single-molecule FRET | protein dynamics | fuzzy complex | molecular simulation

Specific molecular interactions orchestrate a multitude of simultaneous cellular processes. The discovery of intrinsically disordered proteins (IDPs) (1, 2) has substantially aided our understanding of such interactions. More than two decades of research revealed a plethora of functions and mechanisms (2–6) that complemented the prevalent structure-based view on protein interactions. Even the idea that IDPs always ought to fold upon binding has largely been dismantled by recent discoveries of high-affine-disordered complexes (7, 8). Classical shape complementarity is indeed superfluous in the complex between prothymosin- α and histone H1, in which charge complementarity is the main driving force for binding (7). However, complexes between IDPs and folded proteins can also be highly dynamic [e.g., Sic1 and Cdc4 (9), the Na⁺/H⁺ exchanger tail and ERK2 (10), nucleoporin tails, and nuclear transport receptors (11)]. Yet timescales of motions and their spatial amplitudes are often elusive, such that it is unclear how precisely the surfaces of folded proteins alter the dynamics of bound IDPs. Answering this question is a key step in understanding how specificity, affinity, and flexibility can be simultaneously realized in such complexes.

To address this question, we focused on the dynamics of the cell adhesion complex between E-cadherin (E-cad) and β -catenin (β -cat), which is involved in growth pathologies and cancer (12). E-cad is a transmembrane protein that mediates cell–cell adhesions by linking actin filaments of adjacent epithelial cells (Fig. 1A). Previous NMR results showed that the cytoplasmic tail of E-cad is intrinsically disordered (13). E-cad binds β -cat, which establishes a connection to the actin-associated protein α -catenin (14–16). β -cat, on the other hand, is a multifunctional repeat protein (17–20) that mediates cadherin-based cell adhesions (21) and governs cell fate decisions during embryogenesis (22). It contains three domains: an N-terminal domain (130 amino acids [aa]), a central repeat domain (550 aa), and a C-terminal domain (100 aa). Whereas the N- and C-terminal domains of β -cat are in large parts unstructured (17), with little effect on the affinity of the E-cad/ β -cat complex (23), the 12 repeats of the central domain arrange in a superhelix (24). The X-ray structure showed that the E-cad wraps around this central domain of β -cat (24) (Fig. 1B). However, not only is half of the electron density of E-cad missing, the X-ray unit cell also comprises

two structures with different resolved parts of E-cad (Fig. 1B). In fact, only 45% of all resolved E-cad residues are found in both structures (Fig. 1C). Although this ambiguity together with the large portion of missing residues (25) suggests that E-cad is highly dynamic in the complex with β -cat, the timescales and amplitudes of these dynamics are unknown.

Here, we integrated single-molecule Förster resonance energy transfer (smFRET) experiments with molecular simulations to directly measure the dynamics of E-cad on β -cat with high spatial and temporal resolution. In our bottom-up strategy, we first probed intramolecular interactions within E-cad using smFRET to parameterize a coarse-grained (CG) model. In a second step, we monitored E-cad on β -cat, integrated this information into the CG model, and obtained a dynamic picture of the complex. We found that all segments of E-cad diffuse on the surface of β -cat at sub-millisecond timescales and obtained a residue-resolved understanding of these motions: A small number of persistent interactions provide specificity, whereas many weak multivalent contacts boost affinity, which confirms the idea that regulatory enzymes access their recognition motifs on E-cad and β -cat without requiring the complex to dissociate (24).

E-cad Is Expanded in Solution

To probe the conformation of E-cad, we labeled different regions with AlexaFluor 488 as donor and AlexaFluor 594 as acceptor. We created three constructs in which the FRET labels map the N-terminal (A), central (B), and C-terminal (C) segments of E-cad (Fig. 2A and *SI Appendix, Table S1*). In addition, we also checked the donor–acceptor (DA) distance of the longer segments AB, BC, and ABC to characterize the global behavior of E-cad.

Significance

Flexibility in complexes between intrinsically disordered proteins and folded ligands is widespread in nature. However, timescales and spatial amplitudes of such dynamics remained unexplored for most systems. Our results show that the disordered cytoplasmic tail of the cell adhesion protein E-cadherin diffuses across the entire surface of its folded binding partner β -catenin at fast submillisecond timescales. The nanometer amplitude of these motions could allow kinases to access their recognition motifs without requiring a dissociation of the complex. We expect that the rugged energy landscape found in the E-cadherin/ β -catenin complex is a defining feature of dynamic and partially disordered protein complexes.

Author contributions: F.W., W.Z., and H.H. designed research; F.W., A.D., G.R., W.Z., and H.H. performed research; S.W., A.D., and G.R. contributed new reagents/analytic tools; F.W., W.Z., and H.H. analyzed data; and W.Z. and H.H. wrote the paper.

The authors declare no competing interest.

This article is a PNAS Direct Submission.

This open access article is distributed under [Creative Commons Attribution License 4.0 \(CC BY\)](https://creativecommons.org/licenses/by/4.0/).

¹To whom correspondence may be addressed. Email: hagen.hofmann@weizmann.ac.il or wenweizheng@asu.edu.

This article contains supporting information online at <https://www.pnas.org/lookup/suppl/doi:10.1073/pnas.2106690118/-DCSupplemental>.

Published September 9, 2021.

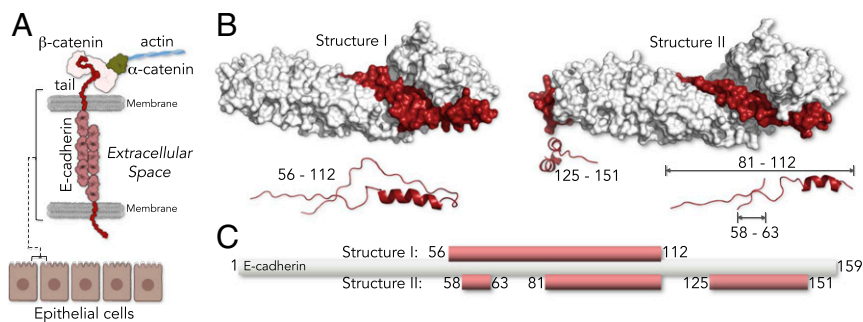


Fig. 1. Complex between the cytoplasmic tail of E-cad and β -cat. (A) Schematics of cell-cell junctions mediated by E-cad and β -cat. (B) The two X-ray structures of the complex between the tail of E-cad (red) and the central repeat domain of β -cat (white) resolve different parts of E-cad (Protein Data Bank: 1i7x), indicating the flexibility of E-cad in the complex. (Bottom) Cartoon representation of the resolved E-cad parts. (C) Scheme showing the resolved parts of E-cad (red).

The labeled E-cad constructs were monitored while freely diffusing through the confocal volume of our microscope. For all six constructs, we obtained homogeneous FRET distributions (Fig. 2A) with mean positions that scaled with the sequence separation between the dyes (Fig. 2B), as expected for an IDP. The persistence lengths of all segments, except of the A-segment, significantly exceeded the value of 0.4 nm found for other disordered or unfolded proteins (26) (Fig. 2C). Hence, E-cad is expanded in solution, likely due to electrostatic repulsions given its high net charge (-22) (27-29). When we screened these repulsions with

KCl, constructs ABC, AB, and BC collapsed substantially, a feature that is well described by mean-field polyampholyte theory (30) (Fig. 2D). Yet compaction was not uniform across the chain. Whereas the local segments B and C also compacted, the N-terminal A-segment expanded (Fig. 2D). Such chain expansion upon charge screening is known for polyampholytes with balanced numbers of positive and negative charges (29-33). However, the A-segment is not charge balanced. It even has a more negative net charge per residue (-0.186) than B (-0.093) and C (-0.166), thus excluding polyampholyte effects (30). Instead, the A-segment exhibits

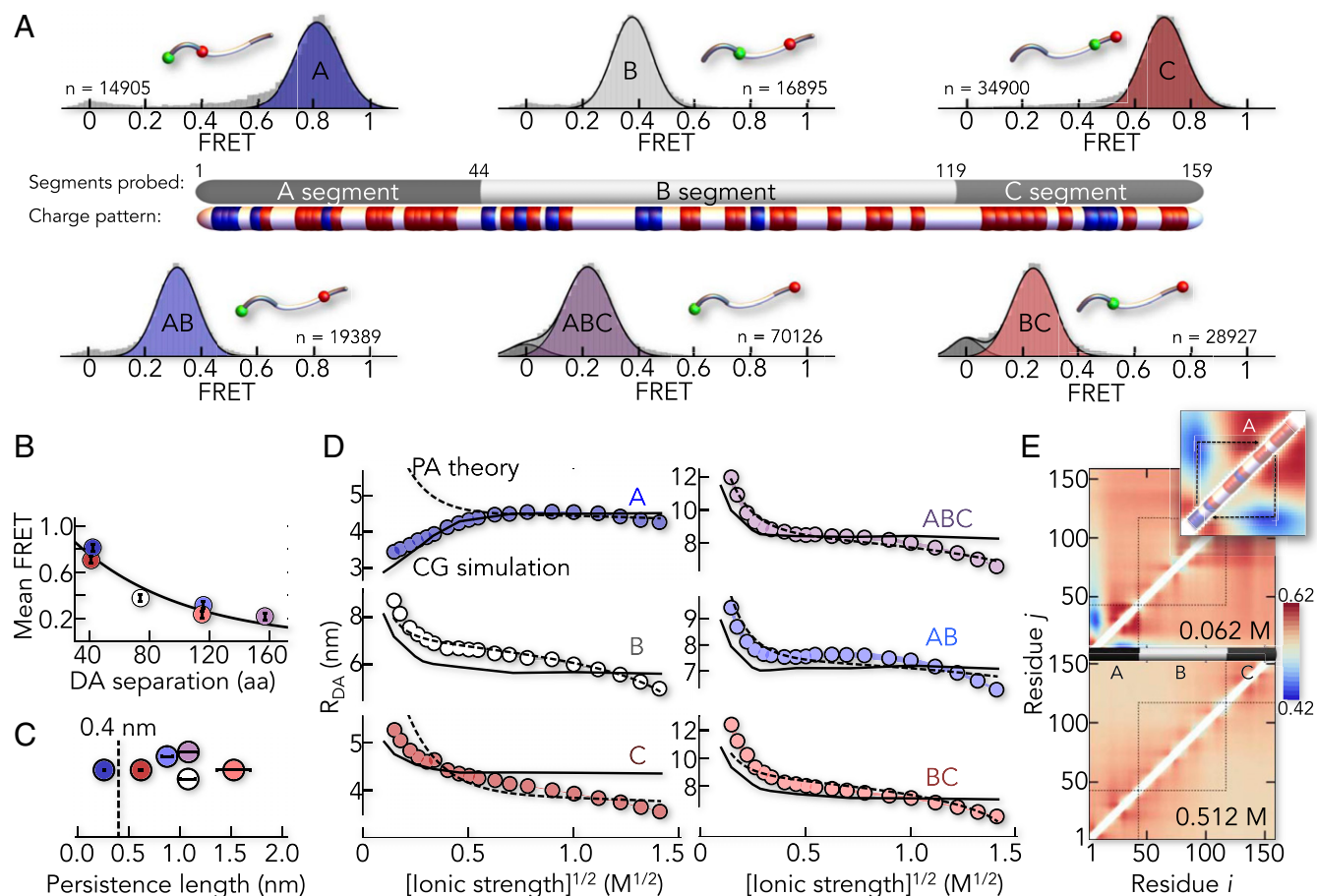


Fig. 2. E-cad is expanded in solution. (A) SmFRET histograms of six segments of E-cad (A, B, C, AB, BC, and ABC) with n indicating the total number of molecules. A scheme shows the division of E-cad into the segments probed by FRET and the distribution of positively (blue) and negatively (red) charged residues. Histogram insets indicate the labeling sites as green and red spheres for donor and acceptor, respectively. (B) The mean FRET efficiencies scale with the sequence separation of the dyes. The color code is identical to A. (C) Persistence lengths of the individual segments. Error bars are the uncertainty introduced by the model of the distance distribution used (SI Appendix). (D) Salt-induced change in the DA distance, R_{DA} , of the six E-cad segments (SI Appendix). A fit with the polyampholyte theory (30, 31) (dashed line) and the best fit of the CG model (solid line) are shown for comparison. (E) Length-scaling exponent map resulting from the best-fit CG model at low- (62 mM, Upper) and high- (512 mM, Lower) ionic strength. (Inset) A-segment.

significant charge segregation: A positively charged N terminus (NT) is followed by a negative C-terminal part (Fig. 2A). Such charge patterning has previously been shown to compact disordered proteins (34), which we confirmed using a sequence charge decoration metric ($SCD_{\text{low salt}}$) (35, 36) (SI Appendix, Fig. S1A). Mean-field polyampholyte theory is therefore inappropriate to describe E-cad, despite its success for other IDPs (29, 31) (Fig. 2D). To convert our smFRET experiments into structural ensembles, we modeled E-cad as a CG heteropolymer of beads. Each bead corresponded to an amino acid with charge (+1, 0, and -1) and hydrophobicity. The strength of hydrophobic interactions was adjustable via a global parameter ϵ (SI Appendix). Remarkably, a single value ($\epsilon = 0.16$ kcal/mol) reproduced all experimental data, including those for the A-segment (Fig. 2D). A two-dimensional map of length scaling exponents (ν) for individual residue pairs (37) now clearly uncovers the effect of charge segregation in the A-segment (Fig. 2E). The scaling exponents for residue pairs from the positively charged NT and the negatively charged C terminus (CT) of the A-segment are small ($\nu < 0.5$), which suggested strong attractions between the termini. Swapping a pair of charged residues between the termini would therefore

revert the salt dependence of the A-segment (SI Appendix, Fig. S1B). Notably, high-salt concentrations (>500 mM) collapsed all segments (Fig. 2D), a salting-out effect (31) that is irrelevant at the physiological salt concentrations used here.

E-cad Forms a Pliable Complex with β -cat

To monitor E-cad in the complex, we added unlabeled β -cat, which gave rise to a second population of E-cad molecules with altered FRET efficiencies (Fig. 3A). In most segments, the FRET efficiency was higher than in free E-cad, indicating a compaction upon binding to β -cat. An exception was again the A-segment. The disruption of interactions between its oppositely charged termini slightly expanded this segment upon binding to β -cat. It has previously been shown that a correct charge patterning in the intrinsically disordered region of the Notch receptor has functional importance (38). The binding-induced breakage of charge contacts in the A-segment might have similar effects (e.g., exposing interaction sites for additional regulatory factors such as p120ctn) (39). We next performed smFRET experiments at different β -cat concentrations to determine the affinity of the complex (Fig. 3B). Depending on the segment, affinities range from 0.9 ± 0.1 nM

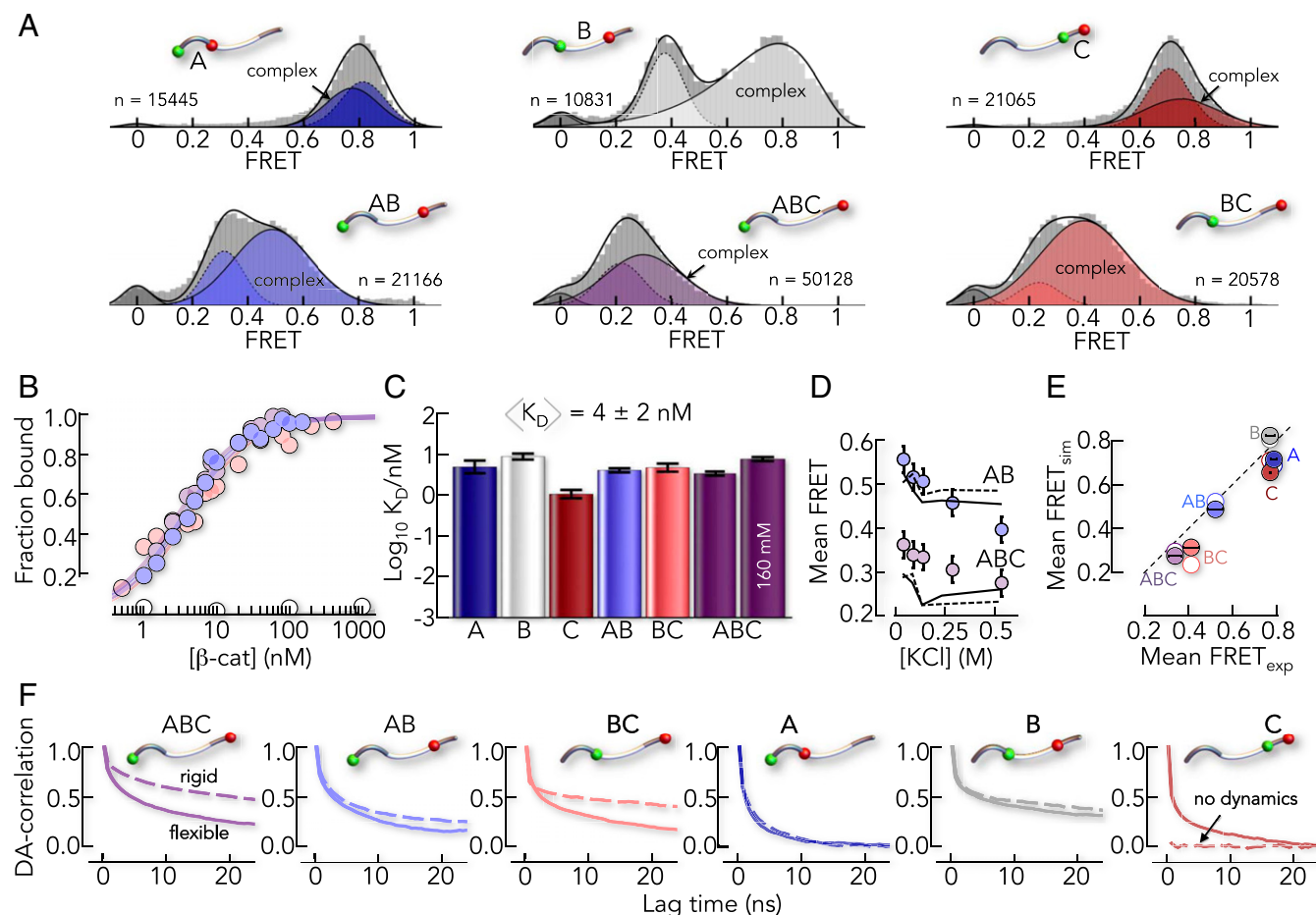


Fig. 3. The conformation of E-cad in complex with β -cat is pliable. (A) smFRET histograms of the six E-cad constructs in the presence of β -cat (A: 4 nM, B: 85 nM, C: 15 nM, AB: 7 nM, BC: 8.5 nM, and ABC: 5 nM). Solid lines are fits of the histograms with a superposition of Gaussian and log-normal peaks and dashed lines represent free E-cad (SI Appendix). The number of molecules in each histogram is indicated by n . (B) Binding isotherms of selected E-cad segments (filled circles) and of the core-binding peptide (white circles). (C) K_D for the six constructs at 82 mM ionic strength and a comparison of the affinity of the ABC-segment at higher-ionic strength. (D) Change in FRET efficiency of the E-cad constructs ABC and AB in complex with β -cat, with increasing salt concentrations. Circles indicate the experimental data, and lines are the result from the rigid CG model when keeping the X-ray resolved E-cad parts static (dashed) and the best fit of the flexible CG model. (E) Comparison of the experimental FRET efficiencies with the rigid CG model (open circles) and the flexible CG model (filled circles). The dashed line is the identity line. (F) Normalized DA distance correlation functions from the rigid CG model (dashed lines) and the flexible CG model (solid lines).

(C-segment) to 7.6 ± 0.6 nM (B-segment) with an average of 4 ± 2 nM (Fig. 3C), which agrees with previous isothermal titration calorimetry results (23) (9.5 ± 3.2 nM at 23 °C; *SI Appendix*) and indicates that our FRET-dyes do not interfere with binding. Remarkably, whereas affinity was only moderately affected by salt (Fig. 3C), increasing KCl concentrations caused a significant decrease in the FRET efficiencies of E-cad, indicative of an expansion (Fig. 3D). This solvent sensitivity suggested that E-cad retains flexibility in complex with β -cat.

To understand this flexibility, we extended our CG model by intermolecular contacts between E-cad and the central armadillo repeat domain of β -cat (*SI Appendix*), neglecting the N- and C-terminal parts of β -cat for which structural information is lacking (17, 23, 24). We first tested a CG model, in which we rigidified the parts of E-cad that are resolved in the X-ray structures (24). Hence, structured parts of E-cad were essentially kept static while the unresolved parts were flexible but allowed to contact β -cat. Indeed, this “rigid” model described the observed FRET efficiencies within an error of ± 0.07 FRET units (Fig. 3E). The model even partially captured the experimentally observed expansion of E-cad at higher-salt concentrations (Fig. 3D), suggesting that flexible parts are responsible for the effect. DA distance correlation functions, computed from microsecond simulations of our CG model, showed extensive decays in all segments except the C-segment, which interacted rigidly with β -cat (Fig. 3F). Unfortunately, CG models average over many degrees of freedom, such as side chain and solvent motions, and therefore only provide an estimate of the dynamics at a reduced timescale, typically two to three orders of magnitude faster compared to all-atom simulations. Yet the model is ideally suited to identify the presence or absence of dynamics. To check the predictions of the CG model, particularly the identified rigidity of the C-segment of E-cad in complex with β -cat, we directly measured the dynamics of E-cad in complex with β -cat experimentally.

E-cad Is Highly Dynamic in Complex with β -cat

To probe the dynamics of the E-cad ensemble, we performed nanosecond fluorescence correlation spectroscopy (nsFCS) (40, 41) experiments of labeled E-cad in the absence and presence of β -cat. Disordered proteins such as E-cad exhibit large-scale distance fluctuations that cause anti-correlated DA intensity fluctuations (41). Indeed, the cross-correlation functions of free E-cad reveal anti-correlated decays in the 100 ns timescale for almost all segments (Fig. 4A). Only the C-segment lacks this signal, likely because of inter-dye contacts caused by a close proximity of the dyes in this short segment (*SI Appendix*, Fig. S2). Such dye–dye contacts quench both dyes simultaneously, thus causing positive amplitudes in the cross-correlation function.

When we formed the complex by adding β -cat, the correlation functions changed. Whereas signals in A and AB were nearly unaltered, the cross-correlation amplitude of the ABC segment decreased, indicating reduced fluctuations at the submicrosecond timescale (Fig. 4A). Segments B, C, and BC even showed positive cross-correlation amplitudes that cannot be explained by DA distance dynamics probed with FRET. A combination of increased static quenching due to dye contacts with aromatic residues of β -cat (42), but also restricted dye mobility (43), caused this behavior, as confirmed by control experiments using acceptor direct excitation (*SI Appendix*, Fig. S2) and fluorescence anisotropy measurements (*SI Appendix*, Fig. S3). To bypass these effects, we determined nanosecond donor fluorescence lifetimes for all segments, a quantity that is unaffected by static quenching, which occurs at hundreds of nanoseconds. If all members of an ensemble of E-cad/ β -cat complexes obey the same DA distance, the donor fluorescence lifetime of this ensemble in the presence of acceptor (τ_{DA}) is given by the measured FRET efficiency E via $\tau_{DA} = \tau_D(1 - E)$ (41) (Fig. 4B). Here, τ_D is the donor fluorescence lifetime in the absence of the acceptor. This is not the case

if the ensemble is heterogeneous (i.e., if DA distances differ among members of the ensemble) (*SI Appendix*). Indeed, we found substantial deviations from the linear scaling, suggesting an ensemble of structures. Importantly, we found this deviation also for the C-segment (Fig. 4B), which was not expected to be dynamic based on our CG model. In addition, we observed a substantial broadening of the FRET peaks of all segments in complex with β -cat, compared to the shot-noise-limited width obtained by recoloring (44) the data (Fig. 4C), which is symptomatic for dynamics in the millisecond regime. Several methods are available to identify dynamics at timescales between micro- and milliseconds for diffusing molecules, including burst variance analysis (45), probability distribution analysis (46, 47), Hidden Markov models (48), photon-by-photon likelihood approaches (49), and recurrence analysis of single particles (RASP) (50, 51). We chose RASP because of its potential to also quantify dynamics slower than the diffusion time of molecules through the confocal volume (~ 1 ms) (50–52). The method exploits the fact that a diffusing molecule can enter and exit the confocal volume multiple times. Once a molecule leaves the observation volume, the chance of it returning within a short time interval is greater than the chance of detecting a new molecule (*SI Appendix*, Fig. S4). This effect allows us to obtain snapshots of the complex at timescales from 100 μ s – 20 ms. By analyzing these events, we constructed the kinetics with which molecules switch from states with low FRET efficiency to those of high FRET efficiency and vice versa (Fig. 4D and *SI Appendix*). The resulting exchange kinetics indeed showed pronounced decays on timescales of micro- to millisecond for all six constructs (Fig. 4E), including the C-segment. The relaxation times obtained from exponential fits ranged from 250 ± 30 μ s for the C-segment to 820 ± 50 μ s for the BC-segment, i.e., three orders of magnitude slower than for free E-cad. Moreover, the relaxation times did not scale with the sequence separation of the dyes as expected for polymers (53–55) such as free E-cad (Fig. 4F). This showed that motions were determined by contacts between E-cad and β -cat rather than within E-cad. Most importantly, these experiments clearly showed that even the C-segment is highly dynamic. Yet, this finding does not necessarily disagree with the X-ray structure (24). In fact, the C-segment is only resolved in one of two structures in the unit cell (Fig. 1 B and C). Such ambiguity has also been observed in other complexes (25) and suggests that the C-segment can indeed dissociate from the β -cat surface, which explains the dynamics found experimentally. Hence, our results show that the complete cytoplasmic tail of E-cad samples the surface of β -cat at submillisecond to millisecond timescales. For comparison, the macroscopic dissociation rate of the complex is $k_{diss} = 6.5 \times 10^{-3} s^{-1}$ (23). Since the decay of macroscopic deviations from equilibrium for an ensemble is identical to the decay of the correlation of equilibrium fluctuations for a single molecule (56), the inverse macroscopic dissociation rate ($k_{diss}^{-1} = 154$ s) is identical to the average lifetime of an E-cad/ β -cat complex. Given the timescale of equilibrium fluctuations of E-cad during this lifetime, we estimate that E-cad reconfigures more than 100,000 times before the complex dissociates.

A Structural Model of E-cad in Complex with β -cat

To obtain a more realistic picture of the E-cad ensemble in complex with β -cat, we revised our CG-model. Instead of fully rigidifying the resolved parts of E-cad, we introduced a parameter (ζ) that tunes the strength of all intermolecular X-ray contacts in a global manner. We found that $\zeta = 0.6$ kcal/mol described the experimentally determined FRET-values and the salt-sensitivity of the complex as good as the rigid model (Fig. 3 D and E). Most importantly, despite the fact that all X-ray contacts share the same interaction parameter ζ , the model indeed predicted a dynamic C-segment (Fig. 3F), which is in good accord with our experimental

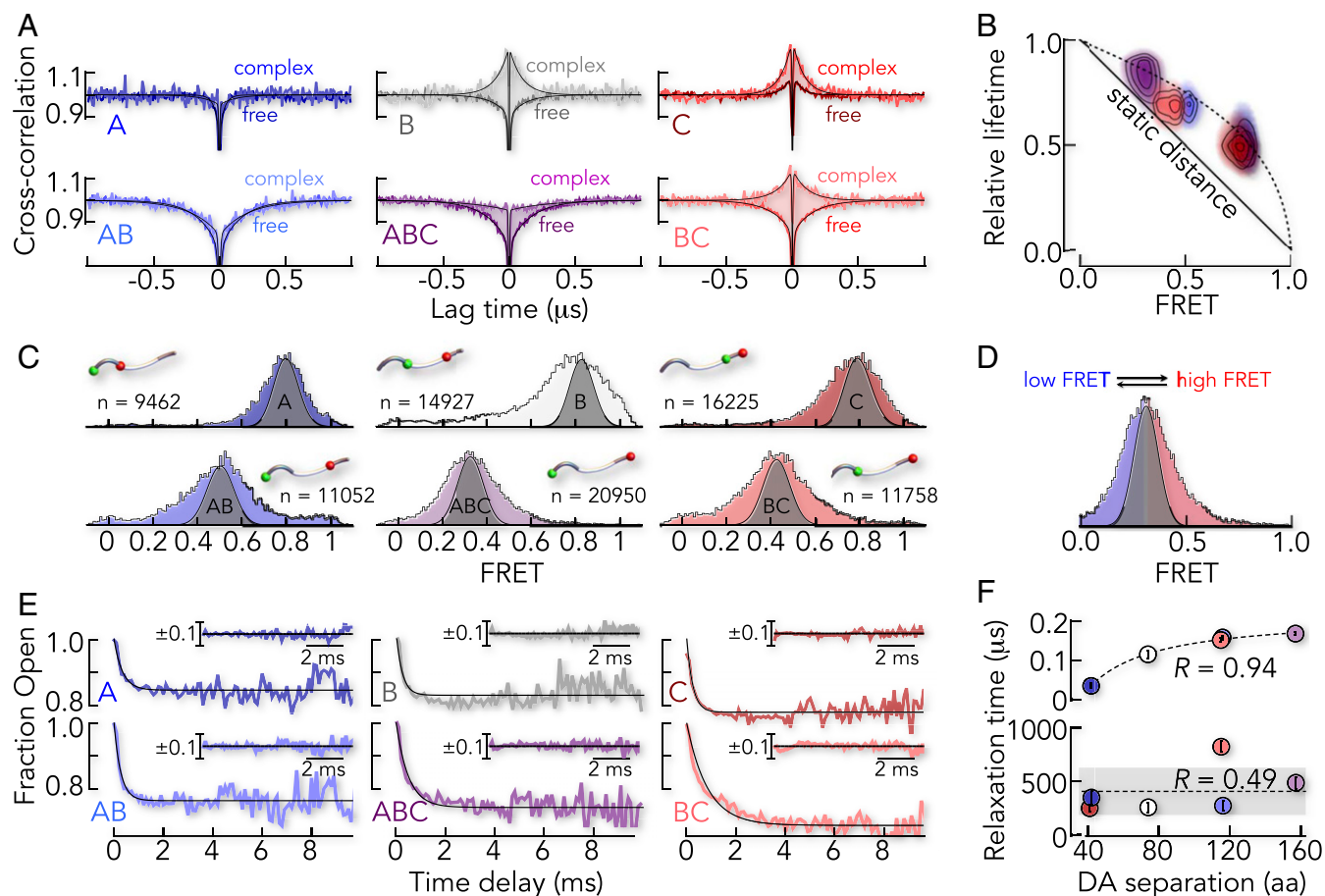


Fig. 4. Timescales of motion of E-cad free and bound to β -cat. (A) DA cross-correlation functions of all six FRET constructs of E-cad in the absence (darker color) and presence (lighter color) of saturating amounts of β -cat (100 nM). Solid lines are fits to a product of exponential terms (SI Appendix). (B) Two-dimensional correlation map between the relative donor fluorescence lifetime (τ_{DA}/τ_D) and mean FRET efficiency of all six E-cad constructs in complex with β -cat. The solid line shows the expected dependence for a single DA distance. The dashed line indicates the dependence for a Gaussian chain distribution as an upper limit of distance heterogeneity. (C) FRET histograms of all E-cad segments, in complex with β -cat, in comparison to the expected shot-noise limit obtained by recoloring (gray area). (D) FRET histogram of the E-cad ABC-segment, in which the low-FRET and high-FRET area is indicated in blue and red, respectively. RASP kinetics monitor the interconversion between the low-FRET molecules and high-FRET molecules. (E) RASP time decays of the fraction of molecules with FRET values lower than the mean value of the FRET histogram for all six E-cad constructs in complex with β -cat. Solid lines are exponential fits of the data. (Inset) Residuals of the exponential fit. (F) Comparison of the relaxation times of free E-cad (Upper) and β -cat-bound E-cad (Lower) as a function of the DA sequence separation. The Pearson correlation coefficient is indicated.

findings. To understand the deviations of this model from the known X-ray structure, we compared the distribution of contact types. To this end, we classified amino acids as polar (P), charged (C), hydrophobic (H), and other amino acids (O). Interestingly, the most abundant intermolecular contacts in the CG-model were of the uncommon H-C type instead of the commonly discussed C-C type (Fig. 5A), which explains the weak salt-dependence of the binding affinity (Fig. 3C). However, this distribution of contact types agrees well with the X-ray structure and an intermolecular contact map shows that interactions found in the X-ray structure were also preserved in the CG-model (Fig. 5B). Particularly, the residue-specific average contact probabilities of E-cad with β -cat in the CG-model, agree well with those computed from the two X-ray structures (Fig. 5B). Yet, the smFRET-based CG-model differed from the known structure in one important aspect. Contact probabilities (Fig. 5B) and lifetimes (SI Appendix, Fig. S5) were broadly distributed in the CG-model, reflecting many weak and unspecific interactions. The highest contact probabilities, i.e., the most persistent interactions, were found in a short 20 amino acid stretch of the B-segment (Fig. 5B), a region that is well resolved in both X-ray structures (Fig. 1 B and C). It has previously been identified as core-binding region of E-cad (57) and

likely provides specificity. To disentangle contributions of specific and unspecific interactions to the overall stability of the E-cad/ β -cat complex, we determined its affinity to β -cat (Fig. 3B). We found a low affinity of the core-binding region with an upper limit of dissociation constants (K_D) $> 1 \mu\text{M}$ compared to $K_D \sim 4 \text{ nM}$ for full-length E-cad. Hence, flexible segments of E-cad boost affinity by more than $5.5 k_B T$, where k_B is the Boltzmann constant and T is the temperature. How are these segments distributed on the surface of β -cat?

The three-dimensional distribution of E-cad on β -cat differed strongly between segments (Fig. 5C). For instance, not only did the A-segment contact the NT and the CT of the central β -cat armadillo repeat domain, but also, the C-segment explored a large surface area of β -cat. The ensemble of the B-segment, on the other hand, was more confined, as expected from the higher-contact probabilities and the fact that 42% of it is resolved in both X-ray structures (Fig. 1C). We visualized the ensembles of the three segments by the distribution of their center of mass along two coordinates: an angular coordinate describing the distribution around the long axis of β -cat (Fig. 5D) and an axial coordinate for the distribution along β -cat (Fig. 5E). These distributions showed that the observed salt-induced changes of E-cad in complex with

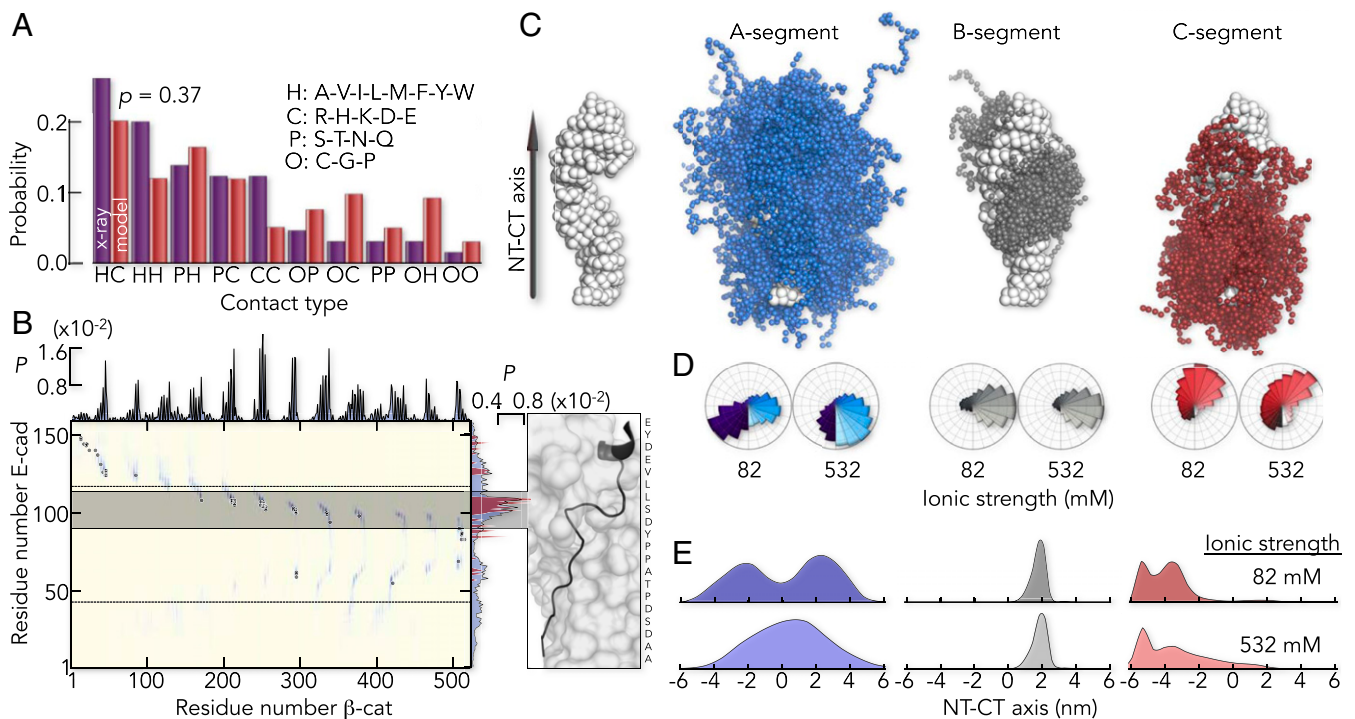


Fig. 5. The flexible CG model predicts a heterogeneous, structural ensemble of E-cad in complex with β -cat. (A) Distribution of contact types in the complex. The classification of contacts is indicated. A Kolmogorov-Smirnov test gives a probability of $P = 0.37$ that both distributions originate from the same sample. (B) Intermolecular contact probabilities (P) based on the flexible CG model (blue) overlaid with the contact map derived from the X-ray map (gray dots). The highest contact probabilities are found in a 20 amino acid long fragment in the B-segment (gray bar) that is well resolved in both X-ray structures (Right). The projected X-ray contact probabilities of E-cad, averaged over both X-ray structures and all β -cat residues (red area) are shown in comparison to the average contact probabilities of E-cad from the flexible CG model (blue area). (C) Structure of β -cat, indicating the directionality of the axis between (Left) and the ensemble of the center of mass positions (Right) of A- (blue), B- (gray), and C (red) -segment. (D) Center of mass angular distribution along the axis between the NT and CT of β -cat (schematically indicated) at low- (82 mM) and high- (532 mM) ionic strength. Color code is identical to C. (E) Center of mass positional distribution of E-cad projected onto the NT-CT axis of β -cat for the segments A, B, and C at two ionic strengths (indicated). The color code is identical to D and C.

β -cat (Fig. 3D) were predominantly due to a screening of intra- and intermolecular charge contacts of the A-segment (Fig. 5 D and E), whereas changes in the B- and C-segment were much less pronounced.

In summary, the refined, flexible CG model indeed recapitulated the experimentally observed large-scale motions of E-cad on the β -cat surface. A total of 91% of the β -cat surface was explored by E-cad in a rather diffusive (i.e., continuous) manner, without encountering major barriers. However, given the simplification inherent to CG models, it remains to be determined whether a continuous diffusion of E-cad on the β -cat surface is realistic. An alternative model requires the concerted association and dissociation of E-cad segments, thus leading to dominant barriers that must be overcome to reconfigure on the β -cat surface. In fact, such a scenario has recently been suggested for the complex between β -cat and another ligand (TCF7L2) (58) and would explain why E-cad motions in the complex are orders of magnitude slower than those found for free E-cad (Fig. 4F). We therefore aimed at identifying the magnitude of these barriers.

Intrachain Diffusion of E-cad on β -cat

The experimental RASP kinetics of the six constructs agreed with exponential decays (Fig. 4E), a hallmark of two-state kinetics and indicative of a dominant barrier. We tested this hypothesis by monitoring the motions of E-cad ABC at different temperatures (SI Appendix, Fig. S6). A barrier should cause Arrhenius behavior (i.e., a significant slowdown of the dynamics with decreasing temperature). Yet we only found a twofold slowdown of the kinetics in the range from 23 to 5 °C (Fig. 6A). A fit with the Arrhenius equation $\tau = A \exp(\beta E_a)$ with $\beta^{-1} = k_B T$ yielded an activation

energy of $E_a = 28 \pm 16$ kJ/mol (Fig. 6B). However, this analysis neglects that the preexponential factor A depends on the viscosity of the medium (60), which itself scales with temperature. Accounting for this effect, we found that the slowdown was also reproduced without activation energy (Fig. 6B). We therefore checked whether the kinetics were indeed consistent with single-well (i.e., barrier-less diffusion), as suggested by our CG model. To this end, we used the DA distance distribution $P(r)$ for the ABC construct from our flexible CG model (Fig. 6B, Inset) to fit the experimental RASP kinetics by solving the Smoluchowski equation for diffusion in a single-well potential given by $V(r) = -\ln P(r)$. Indeed, this barrier-less model also resulted in excellent fits. Intrachain diffusion coefficients ranged from $(4.4 \pm 0.1) \times 10^{-3}$ nm²/μs to $(9.5 \pm 0.1) \times 10^{-3}$ nm²/μs in the temperature range from 5 to 37 °C (Fig. 6C and SI Appendix). Notably, intrachain diffusion was four orders of magnitude slower than that of free E-cad ABC (42 ± 1 nm²/μs; SI Appendix), despite the absence of a dominant barrier (Fig. 6C).

Ruggedness in energy landscapes (i.e., a plethora of small barriers) is known to slow down motions as effectively as a dominant barrier (59, 61–63). For the case of one-dimensional diffusion in a potential of mean force, Zwanzig (59) derived expressions for the apparent diffusion coefficient (D) 1) for Gaussian-distributed potential wells with average depth σ , leading to super-Arrhenius behavior $D = D_0 e^{-\beta^2 \sigma^2}$ and 2) for a periodic modulation, leading to $D = D_0 e^{-2\beta \sigma}$. Interestingly, the more general case of diffusion in multiple dimensions also leads to super-Arrhenius behavior (64). Here, D_0 and D are diffusion coefficients in the absence and presence of ruggedness, respectively. Experimentally, it has been challenging to obtain absolute values for σ , because D_0 and D are typically not simultaneously

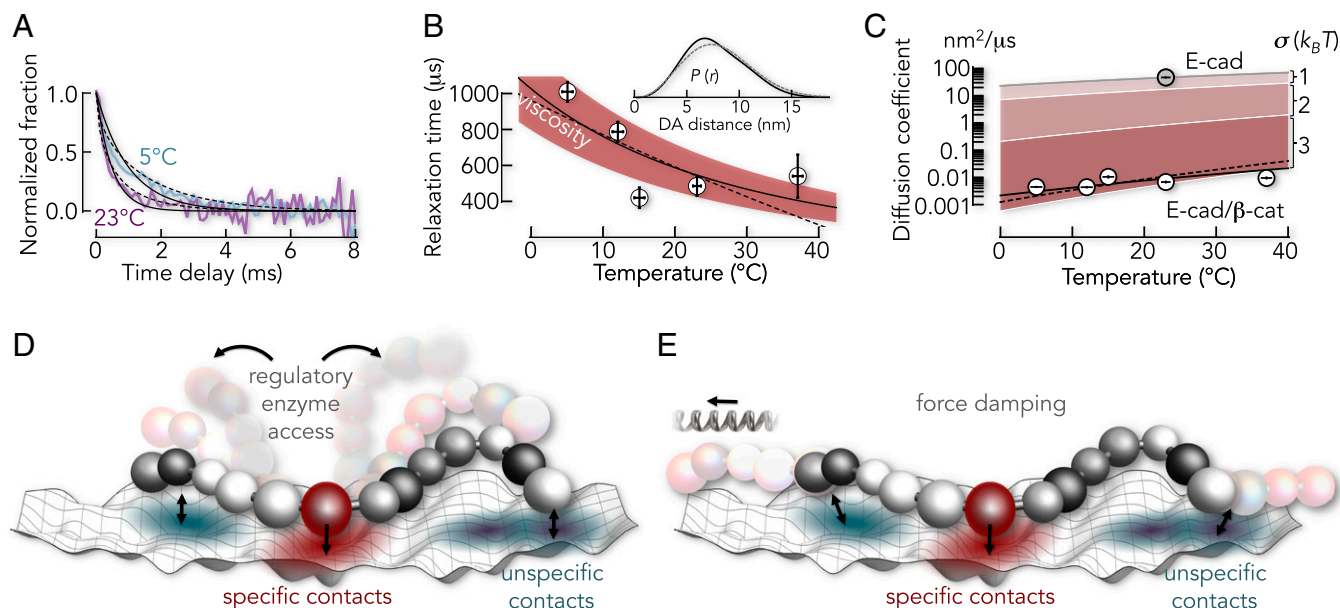


Fig. 6. E-cad dynamics in complex with β -cat are diffusive. (A) Normalized time decays of the E-cad ABC construct at two temperatures (indicated). Solid and dashed lines are fits with an exponential function and with the Smoluchowski equation, respectively. (B) Relaxation times of the E-cad ABC construct as a function of temperature. The red area indicates the 90% confidence interval of this fit. The dashed line is an Arrhenius fit. (Inset) DA distance distributions for E-cad bound (black) and free (gray) from smFRET-based CG model. (C) Comparison of the diffusion coefficient of E-cad free (gray circle) and bound to β -cat (white circles). Shaded areas represent the effect of different roughness values (σ in $k_B T$). Black solid and dashed lines are fits with the Zwanzig expressions (60) for periodic- ($\sigma = 4.3 \pm 0.1$) and Gaussian- ($\sigma = 2.9 \pm 0.1$) modulated roughness, respectively. (D) Scheme of E-cad on the surface of β -cat. Parts of E-cad can partially detach, thus giving access to regulatory enzymes. (E) Same as D but illustrating the spring-like properties of the E-cad/ β -cat complex.

known. Our experiments allowed us to overcome this problem. Since the DA distance distribution of E-cad ABC changed only slightly upon binding to β -cat (Fig. 6 B, Inset), the free energy potentials obtained from the smFRET-based CG model were very similar between free and bound E-cad. Hence, D_0 and D were simply the diffusion coefficients of isolated E-cad and bound to β -cat, respectively. Using the above relationships, we found the amplitude to be 2.9 ± 0.1 and 4.3 ± 0.1 (in $k_B T$) for randomly and periodically fluctuating ruggedness, respectively. These numbers suggest that the individual E-cad segments diffuse on a frustrated energy landscape with many local barriers of height 3 to 4 $k_B T$.

Discussion

A large number of disordered complexes, sometimes being referred to as “fuzzy complexes,” have been identified in the past (65, 66). The thermodynamic benefits of structural ambiguity, such as improved affinities due to higher-conformational entropy of the complex (67), increased specificity via interactions to very distant regions of a ligand (68) or facilitated binding via additional weak and transient interactions (4, 69), are also accompanied by functional benefits. For example, multisite phosphorylation gradually tunes the affinity of Sic1 for Cdc4 (9) and a similar mechanism had earlier also been suggested for E-cad and β -cat (24). Yet, compared to our understanding of the stability of disordered complexes, little is known about the speed at which disordered proteins reconfigure on the surface of their folded ligands. In fact, these dynamics are often only accessible in simulations (70). Our experiments showed that the reconfiguration of E-cad in complex with β -cat occurs at timescales from hundreds of microseconds to milliseconds (i.e., extremely fast compared to the timescales of association and dissociation but several orders of magnitude slower than the dynamics of unbound disordered E-cad). Clearly, the slower dynamics in the complex are caused by contacts with the protein surface. Yet these contacts do not result in a dominant free energy barrier that separates one conformation from the

other. Instead, a large number of weak and transient contacts generate a rugged energy landscape of E-cad with many shallow minima. The minima depth (i.e., the average strength of these contacts) is in the order of a hydrogen bond (3 to 4 $k_B T$) (71), which is insufficient to rigidify E-cad but sufficient to generate high affinity. Hence, similar to Sic1 and Cdc4, the flexible parts of E-cad serve an important function: they boost affinity. This is necessary because specific contacts of the core-binding region fail to generate sufficient binding strength, as indicated by the low affinity of the core-binding region of E-cad (Fig. 3B). However, the correct register of this element in the binding groove of β -cat provides specificity, which sets this complex apart from fully disordered complexes (7, 8).

Apart from allowing a gradual tuning of the E-cad/ β -cat affinity via phosphorylation, the flexibility of E-cad in complex with β -cat might also allow kinases to access their recognition sites without dissociating the entire complex (72). Although the known association rates ($3.5 \times 10^5 \text{ M}^{-1} \cdot \text{s}^{-1}$) (23) in combination with the in-cell concentration of β -cat ($\sim 1 \mu\text{M}$) (73) would suggest that rebinding of β -cat occurs within seconds after dissociation, the concentration of β -cat in the cytosol can be much lower. In fact, activation of Wnt-signaling is associated with an accumulation of β -cat in the nucleus, such that cytosolic concentrations can drop to 25 nM (73). In such cases, rebinding of β -cat already requires hundreds of seconds. The continuous attachment and detachment of local E-cad segments bypasses this problem by providing easy access for regulatory enzymes without dissociating and reassociating the complex (Fig. 6D). In addition, the complex can also serve mechanical functions. Although α -catenin is known to be the primary sensor for mechanotransduction in the cell adhesion complex (74), the flexibility of E-cad in complex with β -cat might serve as an additional entropic spring that dampens rupture forces between epithelial cells. Many weak contacts to the β -cat surface can increase the spring constant without causing a rigid complex (SI Appendix). The E-cad/ β -cat complex has, therefore,

the potential to act as a tunable damper for mechanical forces between cells. Yet whether the complex also shows catch–bond behavior [i.e., an increased number of intermolecular contacts in the presence of force (75, 76)] is currently unclear.

The Velcro-like design of many weak contacts on top of a few persistent interactions reconciles three seemingly contradictory factors: specificity, high affinity, and flexibility. Given the simplicity and advantages of this design, together with the fact that partially disordered complexes are highly abundant (65), the mode of interaction and the timescales of reconfiguration in the E-cad/β-cat complex may be common in biology.

Data Availability. Source data shown in the figures are provided with this paper (Dataset S1). A custom Wolfram symbolic transfer protocol add-on for Mathematica (Wolfram Research), used for the analysis of single-molecule fluorescence data, and implementation

of the CG hydrophathy scale (HPS) model in HOOMD-Blue have been deposited in Bitbucket (<https://schuler.bioc.uzh.ch/programs/> and https://bitbucket.org/jeetain/hoomd_slab_builder). All other study data are included in the article and/or supporting information.

ACKNOWLEDGMENTS. We thank William I. Weis for providing the E-cad plasmid and for his helpful comments on the manuscript. We are also grateful to Dirk Görlich for the plasmid containing the SUMO protease. Our thanks also go to Nir London and Christian Dubiella for their help with mass spectrometry. In addition, we enjoyed critical discussions with Gilad Haran, Amnon Horovitz, Koby Levy, Benjamin Schuler, Robert Best, and Philipp Selenko. This work was supported by the Israel Science Foundation (Grant No. 1549/15), the Benozio Fund for the Advancement of Science, the Carolito Foundation, the Leir Charitable Foundation, and the Koshland family. W.Z. acknowledges the support from the NSF (Grant MCB-2015030) and the research computing at Arizona State University for providing high performance computing.

1. B. Schuler *et al.*, Binding without folding—The biomolecular function of disordered polyelectrolyte complexes. *Curr. Opin. Struct. Biol.* **60**, 66–76 (2020).
2. R. van der Lee *et al.*, Classification of intrinsically disordered regions and proteins. *Chem. Rev.* **114**, 6589–6631 (2014).
3. V. Cizmok, A. V. Follis, R. W. Kriwacki, J. D. Forman-Kay, Dynamic protein interaction networks and new structural paradigms in signaling. *Chem. Rev.* **116**, 6424–6462 (2016).
4. Y. Levy, J. N. Onuchic, P. G. Wolynes, Fly-casting in protein-DNA binding: Frustration between protein folding and electrostatics facilitates target recognition. *J. Am. Chem. Soc.* **129**, 738–739 (2007).
5. J.-Y. Kim, F. Meng, J. Yoo, H. S. Chung, Diffusion-limited association of disordered protein by non-native electrostatic interactions. *Nat. Commun.* **9**, 4707 (2018).
6. J.-Y. Kim, H. S. Chung, Disordered proteins follow diverse transition paths as they fold and bind to a partner. *Science* **368**, 1253–1257 (2020).
7. A. Borgia *et al.*, Extreme disorder in an ultrahigh-affinity protein complex. *Nature* **555**, 61–66 (2018).
8. E. D. Holmstrom, Z. Liu, D. Nettels, R. B. Best, B. Schuler, Disordered RNA chaperones can enhance nucleic acid folding via local charge screening. *Nat. Commun.* **10**, 2453 (2019).
9. T. Mittag *et al.*, Dynamic equilibrium engagement of a polyvalent ligand with a single-site receptor. *Proc. Natl. Acad. Sci. U.S.A.* **105**, 17772–17777 (2008).
10. R. Hendus-Altenburger *et al.*, The human Na⁺/H⁺ exchanger 1 is a membrane scaffold protein for extracellular signal-regulated kinase 2. *BMC Biol.* **14**, 31 (2016).
11. S. Milles *et al.*, Plasticity of an ultrafast interaction between nucleoporins and nuclear transport receptors. *Cell* **163**, 734–745 (2015).
12. R. Nusse, H. Clevers, Wnt/β-catenin signaling, disease, and emerging therapeutic modalities. *Cell* **169**, 985–999 (2017).
13. A. H. Huber, D. B. Stewart, D. V. Laurents, W. J. Nelson, W. I. Weis, The cadherin cytoplasmic domain is unstructured in the absence of β-catenin. A possible mechanism for regulating cadherin turnover. *J. Biol. Chem.* **276**, 12301–12309 (2001).
14. H. Aberle *et al.*, Assembly of the cadherin-catenin complex in vitro with recombinant proteins. *J. Cell Sci.* **107**, 3655–3663 (1994).
15. M. Ozawa, H. Baribault, R. Kemler, The cytoplasmic domain of the cell adhesion molecule uvomorulin associates with three independent proteins structurally related in different species. *EMBO J.* **8**, 1711–1717 (1989).
16. D. L. Rimm, E. R. Koslov, P. Kebriaei, C. D. Cianci, J. S. Morrow, Alpha 1(E)-catenin is an actin-binding and -bundling protein mediating the attachment of F-actin to the membrane adhesion complex. *Proc. Natl. Acad. Sci. U.S.A.* **92**, 8813–8817 (1995).
17. A. H. Huber, W. J. Nelson, W. I. Weis, Three-dimensional structure of the armadillo repeat region of β-catenin. *Cell* **90**, 871–882 (1997).
18. J. Behrens *et al.*, Functional interaction of β-catenin with the transcription factor LEF-1. *Nature* **382**, 638–642 (1996).
19. H. Hoschuetzky, H. Aberle, R. Kemler, β-catenin mediates the interaction of the cadherin-catenin complex with epidermal growth factor receptor. *J. Cell Biol.* **127**, 1375–1380 (1994).
20. J. Hülsken, W. Birchmeier, J. Behrens, E-cadherin and APC compete for the interaction with β-catenin and the cytoskeleton. *J. Cell Biol.* **127**, 2061–2069 (1994).
21. H. Aberle, H. Schwartz, H. Hoschuetzky, R. Kemler, Single amino acid substitutions in proteins of the armadillo gene family abolish their binding to α-catenin. *J. Biol. Chem.* **271**, 1520–1526 (1996).
22. B. T. MacDonald, K. Tamai, X. He, Wnt/β-catenin signaling: Components, mechanisms, and diseases. *Dev. Cell* **17**, 9–26 (2009).
23. H.-J. Choi, A. H. Huber, W. I. Weis, Thermodynamics of β-catenin-ligand interactions: The roles of the N- and C-terminal tails in modulating binding affinity. *J. Biol. Chem.* **281**, 1027–1038 (2006).
24. A. H. Huber, W. I. Weis, The structure of the β-catenin/E-cadherin complex and the molecular basis of diverse ligand recognition by β-catenin. *Cell* **105**, 391–402 (2001).
25. S. DeForte, V. N. Uversky, Resolving the ambiguity: Making sense of intrinsic disorder when PDB structures disagree. *Protein Sci.* **25**, 676–688 (2016).
26. H. Hofmann *et al.*, Polymer scaling laws of unfolded and intrinsically disordered proteins quantified with single-molecule spectroscopy. *Proc. Natl. Acad. Sci. U.S.A.* **109**, 16155–16160 (2012).
27. B. Y. Ha, D. Thirumalai, Conformations of a polyelectrolyte chain. *Phys. Rev. A* **46**, R3012–R3015 (1992).
28. H. Hofmann, R. P. Golbik, M. Ott, C. G. Hübner, R. Ulbrich-Hofmann, Coulomb forces control the density of the collapsed unfolded state of barstar. *J. Mol. Biol.* **376**, 597–605 (2008).
29. S. Müller-Spätth *et al.*, From the cover: Charge interactions can dominate the dimensions of intrinsically disordered proteins. *Proc. Natl. Acad. Sci. U.S.A.* **107**, 14609–14614 (2010). Correction in: *Proc. Natl. Acad. Sci. U.S.A.* **110**, 16693 (2013).
30. P. G. Higgs, J.-F. Joanny, Theory of polyampholyte solutions. *J. Chem. Phys.* **94**, 1543–1554 (1991).
31. R. Vancaerenbroeck, Y. S. Harel, W. Zheng, H. Hofmann, Polymer effects modulate binding affinities in disordered proteins. *Proc. Natl. Acad. Sci. U.S.A.* **116**, 19506–19512 (2019).
32. A. Bhattacharjee, P. Kundu, A. Dua, Self-consistent theory of structures and transitions in weak polyampholytes. *Macromol. Theory Simul.* **20**, 75–84 (2011).
33. H. S. Samanta, D. Chakraborty, D. Thirumalai, Charge fluctuation effects on the shape of flexible polyampholytes with applications to intrinsically disordered proteins. *J. Chem. Phys.* **149**, 163323 (2018).
34. R. K. Das, R. V. Pappu, Conformations of intrinsically disordered proteins are influenced by linear sequence distributions of oppositely charged residues. *Proc. Natl. Acad. Sci. U.S.A.* **110**, 13392–13397 (2013).
35. L. Sawle, K. Ghosh, A theoretical method to compute sequence dependent configurational properties in charged polymers and proteins. *J. Chem. Phys.* **143**, 085101 (2015).
36. J. Huihui, T. Firman, K. Ghosh, Modulating charge patterning and ionic strength as a strategy to induce conformational changes in intrinsically disordered proteins. *J. Chem. Phys.* **149**, 085101 (2018).
37. G.-N. W. Gomes *et al.*, Conformational ensembles of an intrinsically disordered protein consistent with NMR, SAXS, and single-molecule FRET. *J. Am. Chem. Soc.* **142**, 15697–15710 (2020).
38. K. P. Sherry, R. K. Das, R. V. Pappu, D. Barrick, Control of transcriptional activity by design of charge patterning in the intrinsically disordered RAM region of the Notch receptor. *Proc. Natl. Acad. Sci. U.S.A.* **114**, E9243–E9252 (2017).
39. T. Pieters, F. van Roy, J. van Hengel, Functions of p120ctn isoforms in cell-cell adhesion and intracellular signaling. *Front. Biosci. (Landmark Ed)* **17**, 1669–1694 (2012).
40. D. Nettels, I. V. Gopich, A. Hoffmann, B. Schuler, Ultrafast dynamics of protein collapse from single-molecule photon statistics. *Proc. Natl. Acad. Sci. U.S.A.* **104**, 2655–2660 (2007).
41. B. Schuler, A. Soranno, H. Hofmann, D. Nettels, Single-molecule FRET spectroscopy and the polymer physics of unfolded and intrinsically disordered proteins. *Annu. Rev. Biophys.* **45**, 207–231 (2016).
42. D. Haenni, F. Zosel, L. Reymond, D. Nettels, B. Schuler, Intramolecular distances and dynamics from the combined photon statistics of single-molecule FRET and photo-induced electron transfer. *J. Phys. Chem. B* **117**, 13015–13028 (2013).
43. F. Hillger *et al.*, Probing protein-chaperone interactions with single-molecule fluorescence spectroscopy. *Angew. Chem. Int. Ed. Engl.* **47**, 6184–6188 (2008).
44. I. V. Gopich, A. Szabo, Decoding the pattern of photon colors in single-molecule FRET. *J. Phys. Chem. B* **113**, 10965–10973 (2009).
45. J. P. Torella, S. J. Holden, Y. Santoso, J. Hohlbein, A. N. Kapanidis, Identifying molecular dynamics in single-molecule FRET experiments with burst variance analysis. *Biophys. J.* **100**, 1568–1577 (2011).
46. S. Kalinin, A. Valeri, M. Antonik, S. Felekyan, C. A. M. Seidel, Detection of structural dynamics by FRET: A photon distribution and fluorescence lifetime analysis of systems with multiple states. *J. Phys. Chem. B* **114**, 7983–7995 (2010).
47. S. Kalinin, E. Sisamakakis, S. W. Magennis, S. Felekyan, C. A. M. Seidel, On the origin of broadening of single-molecule FRET efficiency distributions beyond shot noise limits. *J. Phys. Chem. B* **114**, 6197–6206 (2010).
48. M. Pirchi *et al.*, Photon-by-photon hidden Markov model analysis for microsecond single-molecule FRET kinetics. *J. Phys. Chem. B* **120**, 13065–13075 (2016).
49. I. V. Gopich, A. Szabo, Theory of the energy transfer efficiency and fluorescence lifetime distribution in single-molecule FRET. *Proc. Natl. Acad. Sci. U.S.A.* **109**, 7747–7752 (2012).

50. A. Hoffmann *et al.*, Quantifying heterogeneity and conformational dynamics from single molecule FRET of diffusing molecules: Recurrence analysis of single particles (RASP). *Phys. Chem. Chem. Phys.* **13**, 1857–1871 (2011).
51. I. Grossman-Haham, G. Rosenblum, T. Namani, H. Hofmann, Slow domain re-configuration causes power-law kinetics in a two-state enzyme. *Proc. Natl. Acad. Sci. U.S.A.* **115**, 513–518 (2018).
52. T. Lasitzka-Male *et al.*, Membrane chemistry tunes the structure of a peptide transporter. *Angew. Chem. Int. Ed. Engl.* **59**, 19121–19128 (2020).
53. A. Soranno *et al.*, Quantifying internal friction in unfolded and intrinsically disordered proteins with single-molecule spectroscopy. *Proc. Natl. Acad. Sci. U.S.A.* **109**, 17800–17806 (2012).
54. A. Soranno, F. Zosel, H. Hofmann, Internal friction in an intrinsically disordered protein-comparing Rouse-like models with experiments. *J. Chem. Phys.* **148**, 123326 (2018).
55. P. E. Rouse Jr, A theory of the linear viscoelastic properties of dilute solutions of coiling polymers. *J. Chem. Phys.* **21**, 1272–1280 (1953).
56. L. Onsager, Reciprocal relations in irreversible processes. I. *Phys. Rev.* **37**, 405–426 (1931).
57. J. Stappert, R. Kemler, A short core region of E-cadherin is essential for catenin binding and is highly phosphorylated. *Cell Adhes. Commun.* **2**, 319–327 (1994).
58. B. M. Smith, P. J. E. Rowling, C. M. Dobson, L. S. Itzhaki, Parallel and sequential pathways of molecular recognition of a tandem-repeat protein and its intrinsically disordered binding partner. *Biomolecules* **11**, 827 (2021).
59. R. Zwanzig, Diffusion in a rough potential. *Proc. Natl. Acad. Sci. U.S.A.* **85**, 2029–2030 (1988).
60. H. Kramers, Brownian motion in a field of force and the diffusion model of chemical reactions. *Physica* **7**, 284–304 (1940).
61. H. Frauenfelder, S. G. Sligar, P. G. Wolynes, The energy landscapes and motions of proteins. *Science* **254**, 1598–1603 (1991).
62. A. Ansari *et al.*, Protein states and proteinquakes. *Proc. Natl. Acad. Sci. U.S.A.* **82**, 5000–5004 (1985).
63. B. G. Wensley *et al.*, Experimental evidence for a frustrated energy landscape in a three-helix-bundle protein family. *Nature* **463**, 685–688 (2010).
64. J. D. Bryngelson, P. G. Wolynes, Intermediates and barrier crossing in a random energy model (with applications to protein folding). *J. Phys. Chem.* **93**, 6902–6915 (1989).
65. M. Fuxreiter, P. Tompa, Fuzzy complexes: A more stochastic view of protein function. *Adv. Exp. Med. Biol.* **725**, 1–14 (2012).
66. A. N. Amin, Y.-H. Lin, S. Das, H. S. Chan, Analytical theory for sequence-specific binary fuzzy complexes of charged intrinsically disordered proteins. *J. Phys. Chem. B* **124**, 6709–6720 (2020).
67. T. A. Graham, D. M. Ferkey, F. Mao, D. Kimelman, W. Xu, Tcf4 can specifically recognize beta-catenin using alternative conformations. *Nat. Struct. Biol.* **8**, 1048–1052 (2001).
68. C. Smet-Nocca, J.-M. Wieruszkeski, V. Chara, A. Leroy, A. Benecke, The thymine-DNA glycosylase regulatory domain: Residual structure and DNA binding. *Biochemistry* **47**, 6519–6530 (2008).
69. A. Tóth-Petróczy, I. Simon, M. Fuxreiter, Y. Levy, Disordered tails of homeodomains facilitate DNA recognition by providing a trade-off between folding and specific binding. *J. Am. Chem. Soc.* **131**, 15084–15085 (2009).
70. L. S. Bigman, Y. Levy, Tubulin tails and their modifications regulate protein diffusion on microtubules. *Proc. Natl. Acad. Sci. U.S.A.* **117**, 8876–8883 (2020).
71. S.-Y. Sheu, D.-Y. Yang, H. L. Selzle, E. W. Schlag, Energetics of hydrogen bonds in peptides. *Proc. Natl. Acad. Sci. U.S.A.* **100**, 12683–12687 (2003).
72. J. Henriques, K. Lindorff-Larsen, Protein dynamics enables phosphorylation of buried residues in Cdk2/Cyclin-A-bound p27. *Biophys. J.* **119**, 2010–2018 (2020).
73. C. W. Tan *et al.*, Wnt signalling pathway parameters for mammalian cells. *PLoS One* **7**, e31882 (2012).
74. A. K. Barry *et al.*, α -catenin cytomechanics—role in cadherin-dependent adhesion and mechanotransduction. *J. Cell Sci.* **127**, 1779–1791 (2014).
75. S. Chakrabarti, M. Hinczewski, D. Thirumalai, Plasticity of hydrogen bond networks regulates mechanochemistry of cell adhesion complexes. *Proc. Natl. Acad. Sci. U.S.A.* **111**, 9048–9053 (2014).
76. M. Dembo, D. Torney, K. Saxman, D. Hammer, The reaction-limited kinetics of membrane-to-surface adhesion and detachment. *Proc. R Soc. Lond. Biol. Sci. B* **234**, 55–83 (1988).