

# Immunological consequences of ageing microvascular hemodynamic changes in view of cancer development and treatment

Jinhyuk Fred Chung<sup>1</sup>, Sang Joon Lee<sup>2,3</sup> and Anil K. Sood<sup>4,5</sup>

<sup>1</sup>Xylonix Pte. Ltd., Singapore

<sup>2</sup>Division of Integrative Biosciences and Biotechnology (IBB), Pohang University of Science and Technology (POSTECH), Pohang, South Korea

<sup>3</sup>Center for Biofluid and Biomimic Research, Department of Mechanical Engineering, Pohang University of Science and Technology (POSTECH), Pohang, South Korea

<sup>4</sup>Departments of Gynecologic Oncology and Reproductive Medicine and Cancer Biology, The University of Texas, MD Anderson Cancer Center, Houston, TX, USA

<sup>5</sup>Center for RNA Interference and Non-Coding RNAs, The University of Texas, MD Anderson Cancer Center, Houston, TX, USA

**Correspondence to:** Jinhyuk Fred Chung, **email:** j.f.chung@xylonixscience.com

**Keywords:** *immunity, cancer, hemodynamics, ageing, hypertension*

**Received:** December 08, 2016

**Accepted:** April 24, 2017

**Published:** May 10, 2017

Copyright: Chung et al. This is an open-access article distributed under the terms of the Creative Commons Attribution License 3.0 (CC BY 3.0), which permits unrestricted use, distribution, and reproduction in any medium, provided the original author and source are credited.

## ABSTRACT

**Risk factors of cardiovascular diseases have long been implicated as risk factors for carcinogenesis, but clear explanations for their association have not been presented. In this article, fundamental concepts from carcinogenesis, microvascular hemodynamics, and immunity are collectively reviewed and analyzed in context of the known features of vascular ageing effects, in formulating a theory that suggests reduced microvascular immunity as an important driving factor for carcinogenesis. Furthermore, scientific, preclinical, and clinical evidence that support this new theory are presented in an interdisciplinary manner, offering new explanations to previously unanswered factors that impact cancer risks and its treatment outcome such as chronic drug use, temperature, stress and exercise effects among others. Forward-looking topics discussing the implications of this new idea to cancer immunotherapeutics are also discussed.**

## INTRODUCTION

### Limitations of current knowledge that links cardiovascular complications to carcinogenesis

Cancer is a widespread and a lethal disease of neoplasms in which no reliable treatment nor its prevention methods have been developed. In explaining its natural etiology, current science interprets carcinogenesis in a largely three-step process that sequentially involves an accumulation step of oncogenic mutations, a tumor promotion step whereby the microenvironment surrounding the mutated cells fosters malignant transformation and clonal expansion of these “initiated” cells, and lastly an immuno-escape step whereby these

cancerous cells overcome our tumoricidal immunity (cancer immunosurveillance) (Figure 1) [1–4]. Recently, increasing number of experimental and epidemiological evidences suggested that the epidemiological rate of carcinogenesis is mainly driven by the chronic inflammations fostering the tumor promotion step, and by the alterations in the immunity mechanism over the course of ageing, rather than by the accumulation of genetic mutations [5–7]. In context of these understandings, identification of various cardiovascular risk/preventive factors such as hypertension [8, 9], physical exercise [10], or coffee drinking [11] in association with cancer risks has been a perplexing topic as these factors seemingly have no direct contribution to any of the three steps to carcinogenesis. However, collective and in-depth

understandings on hemodynamics, immunity mechanism, and the vascular ageing effects reveal a new face of cancer immunity that helps explain many of the previously unanswered controversies surrounding carcinogenesis, cancer prevention, and its treatments.

### Revisiting the fundamental basics of circulation, immunity, and the underlying mechanisms of vascular ageing

In 1951, Sternstein reported that the use of local vasodilators with antibiotics significantly improved treatment outcome of atrophic rhinitis with ozena versus the use of antibiotics alone, which was associated with increased vascularization of the nasal mucosa [12]. And more recently, Ben-Ami et al. showed that drug-resistance of *Aspergillus fumigatus* in common pulmonary infections of cancer patients was attributed to its ability to cause occlusion in pulmonary vasculatures via secretion of anti-angiogenic metabolites [13], and later showed that co-administration of pro-angiogenic factors such as basic fibroblast growth factor (bFGF) and vascular endothelial growth factor (VEGF) significantly amplified the effectiveness of antifungal treatments by increasing the accumulation of monocytes in the infected tissues [14]. Interestingly, they also reported that VEGF was less effective than bFGF in potentiating the antifungal effect due to its tendency of forming immature neovessels [14], which implicated that even the small hemodynamic changes caused by different geometric features of capillaries are critical in the effectiveness of microvascular immunity.

While hemodynamic features are relatively simple in larger vessels, blood flow in smaller ones becomes increasingly complex and heterogeneous as the dimensional constraints of capillaries (inner diameter:

5~10  $\mu\text{m}$ ) approach to those of blood constituent cells (5~15  $\mu\text{m}$ ) [15]. Composition and rheological properties of blood are consequently changed in the capillaries due to flow-network effects and interaction of WBCs with the endothelial lining of the draining venous vascular walls whereby the flow-rate is lower. As the ageing-associated development of endothelial dysfunctions [16–18] and rise in endogenous homocysteine (Hcy) level [19, 20] adversely influence the passage of different blood cells through capillaries by affecting both factors, pathological consequences are expected to arise.

Briefly, phase-separation from flow-network effect arises from the fact that blood cells with different geometric configuration, viscosity, and stiffness have a general tendency of following higher velocity path with less entry restriction at each vascular bifurcation [21]. Therefore, the dimensional and network structural features of local capillary beds determine the phase-separation effect with subsequent reduction in the concentration of larger-sized blood cell components in finer capillary beds and its compensating overflow of the cells in a small number of distal channels [22]. Network Fåhræus effect is a well-known phenomenon whereby hematocrit is reduced up to 40% in the finest capillaries versus feed hematocrit [21, 23]. More importantly, Network Fåhræus effect can be extended to cause marked variations in discharge hematocrit among different capillary networks as reported by Pries et al. [21], suggesting tissue-wide variations in blood functions. Similarly, a rat model study showed marked phase-separation of WBCs in a mesenteric capillary network whereby its relative density to systemic level ( $6.0 \times 10^9/\text{L}$ ) in proximal capillaries (diameter =  $8.9 \pm 0.4 \mu\text{m}$ ) was characterized at only 55% ( $3.4 \pm 0.5 \times 10^9/\text{L}$ ), while the WBC density in the compensating distal capillaries (diameter =  $10.1 \pm 0.4 \mu\text{m}$ ) was characterized at 195% ( $11.7 \pm 2.6 \times 10^9/\text{L}$ ) [24]. In

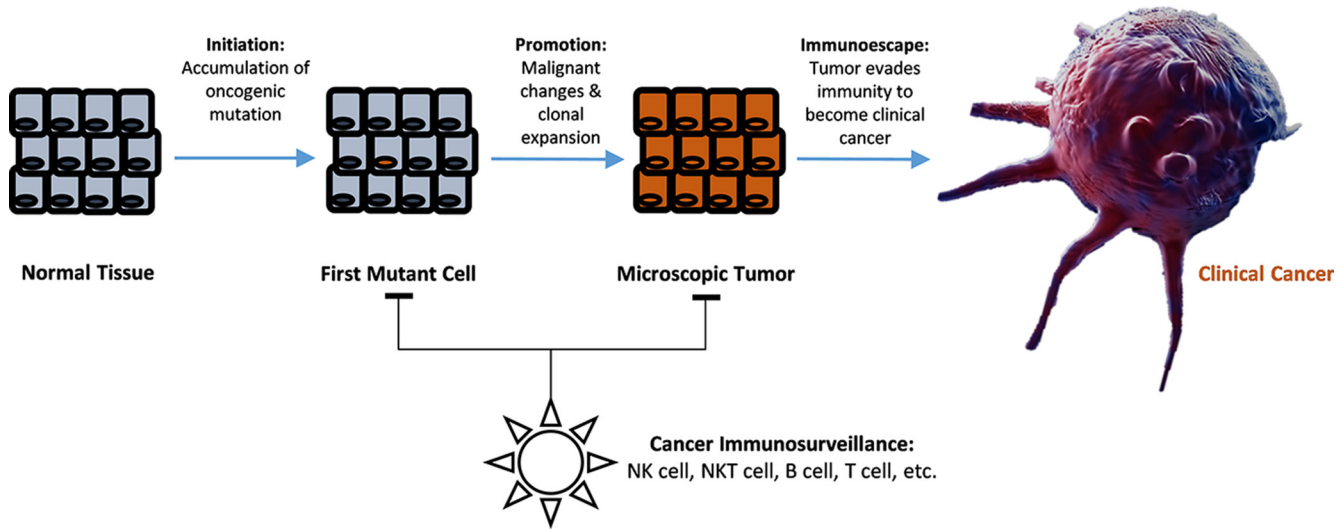


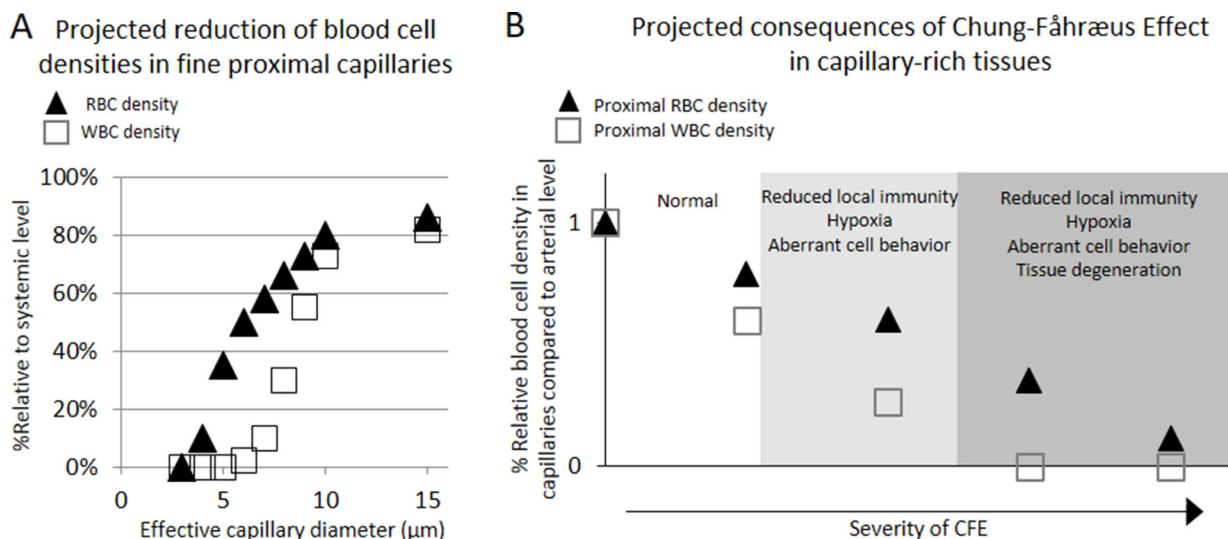
Figure 1: Illustrated diagram of multistage carcinogenesis model and the role of cancer immunosurveillance in preventing clinical cancer development.

further considerations, WBC discharge in fine capillaries less than 7  $\mu\text{m}$  diameter is expected to approach "0" in an exponential fashion due to volume exclusion effects (Figure 2A). This suggests potential existence of tissue regions with hemodynamically inhibited oxygen supply and immunity cell access upon vasoconstriction in otherwise healthy individuals (Figure 2) [24, 25].

In further details, nitric oxide (NO)-modulated interaction of different WBCs with the endothelial lining of low-shear venous vascular walls and subsequent reduction of flows into capillaries is another contributing factor toward the phase-separation of blood in capillaries. Particularly, NO was shown to inhibit the activation and interaction of polymorphonuclear leukocytes (PMNs) with endothelial cells by suppressing cell stiffening and cell adhesion via CD18 expression [26], while similarly inhibiting the recruitment of monocytes via suppression of VCAM-1 gene transcription [27]. Conversely, NO plays a pivotal role in activation and recruitment of certain subsets of lymphocytes such as natural killer cells (NK cells) [28]. While delicate modulation of these interactions by NO is essential for proper immune function by the WBCs, their excessive activation is also known to cause "plugging" of capillaries that leads to significant reduction in capillary blood perfusion [29, 30]. Since the WBC plugging has a volume exclusion effect, the reduction in the effective diameter of capillaries and their draining venules would enhance the capillary flow resistance and, in turn, marked reduction of blood cell flow rate through the capillaries against the larger blood cells such as WBCs. Therefore, synergistic depression of local NK-cell activities in certain capillary beds may be

expected upon reduced endothelial NO availability, owing to the increased capillary plugging effects by PMNs and monocytes [26, 27], impaired vasodilation [31–33], and suppressed NK cell activation [28].

On the basis of these hemodynamic effects, progressive exacerbation of the local blood cell reduction against larger circulating cells within and across capillary networks [21, 24] is expected due to epidemiologically characterized development of endothelial dysfunctions [18, 32] and elevation in systemic Hcy level [34] over the course of ageing. Briefly, age-dependent reduction in endothelial nitric oxide synthase and consequent reduction of NO availability in blood has been shown to cause chronic vasoconstriction from deficiencies in NO-mediated vasodilation of all types [31–33] with subsequent elevation in blood pressure that further causes progressive rarefactions in capillary beds [35, 36]. In addition, such NO-deficiency was found to reduce deformability of RBCs [37] and various WBCs [29] while aberrantly activating cell adhesion molecules (CAMs) [16, 26], further reducing the blood flow into the constricted capillaries. Meanwhile, physiologically relevant level of diet-induced hyperhomocysteinemia ( $10.6 \pm 0.2 \mu\text{M}$ ) was shown to cause increased vasoconstriction response in cynomolgus monkeys [19], and similar treatment was shown to impair NO-mediated vasodilation response by reducing eNOS level in porcine models [38]. Furthermore, the Hcy inhibition of NO-induction was shown to cause up-regulation of CAMs [20, 39]. These results implicate potential roles of age-dependent endothelial dysfunctions causing reduced



**Figure 2:** Projected density reductions in RBC and WBC flowing through proximal capillaries of different effective luminal diameters when compared to those of arterial level, and projected pathological consequences of Chung-Fåhræus Effect (CFE) (A) The RBC density reduction was estimated based on the published work by Tuma and Duran that described the RBC reduction phenomenon in fine capillaries per Fåhræus effect [25], adjusted by predicted volume exclusion effect against the entry of RBCs. Similarly, WBC density reduction was estimated based on the published work by Ley et al. who quantitatively showed the reduction in the density of WBC in fine mesenteric capillary networks [24], adjusted by predicted volume exclusion effect against the entry of WBCs. (B) Suspected pathological consequences of CFE development in capillary-rich tissues.

endogenous NO generation [18, 32] in exacerbating the reduction of larger blood cell availability in the constricted capillary-rich tissues. For convenient discussions, we coined this exacerbating development of RBC and WBC deficiencies in capillary-rich tissues due to constrictive and/or plugging-prone endothelial dysfunctions with the term “Chung-Fähræus effect” (CFE) [21, 24, 40].

### **Projected pathological consequences of CFE**

The pathological consequences upon manifestation of weakly prolonged CFE would include reduction of local immunity access, mild hypoxia, and activation of some immunity cells even at a moderate level, which may lead to pathologies arising from hypoxia-induced aberrant cell behavior, reduced regeneration, chronic infection, inflammation, and/or carcinogenesis (Figure 2B). In addition, more pronounced manifestation of the effect may further cause tissue degeneration from severe hypoxia, malnutrition, and chronic infections from local immune deficiency. Given these theoretical considerations, CFE allows for interesting interpretations on the epidemiology of known microvascular diseases including arthritis, diabetes, and Alzheimer’s disease (AD) with respect to the prevalence of primary hypertension (PHT) or peripheral arterial disease (PAD) over the course of ageing. Notably, microvascular rarefaction has been implicated as the direct cause of symptomatic progression in these three diseases [41–45].

PHT constitutes about 90~95% of all hypertension cases [46], and it arises from functional and structural capillary rarefactions causing microvascular hypoperfusion across the system with consequent increase in the systemic blood-flow resistance [47]. Briefly, the functional capillary rarefaction arises from excessive chronic vasoconstriction of arterioles, which subsequently leads to structural rarefactions of certain arterioles and capillaries that are characterized by thickened and stiffened vascular walls due to their prolonged exposure to elevated blood pressure [47]. Therefore, the prevalence of hypertension in a given age group is expected to represent the respective prevalence of constrictive and degenerative capillary disorders in the corresponding age group. PAD, on the other hand, arises from atherosclerotic narrowing of peripheral arteries to legs, arms, stomach, and head that results in reduced arterial blood-flow into the affected organs, which was shown to result in significant increase in leukocyte adhesion in venules that subsequently results in significant reduction in microvascular perfusion in the affected tissues [48]. As the atherosclerotic build-up in the peripheral arteries also increases the risks of further vascular occlusion from clot debris in the affected vascular subnetworks, PAD is expected to result in a more severe level of CFE compared to those by PHT. In short, PHT may be interpreted to represent the microvascular dysfunctions that result in weakly prolonged CFE while PAD may be

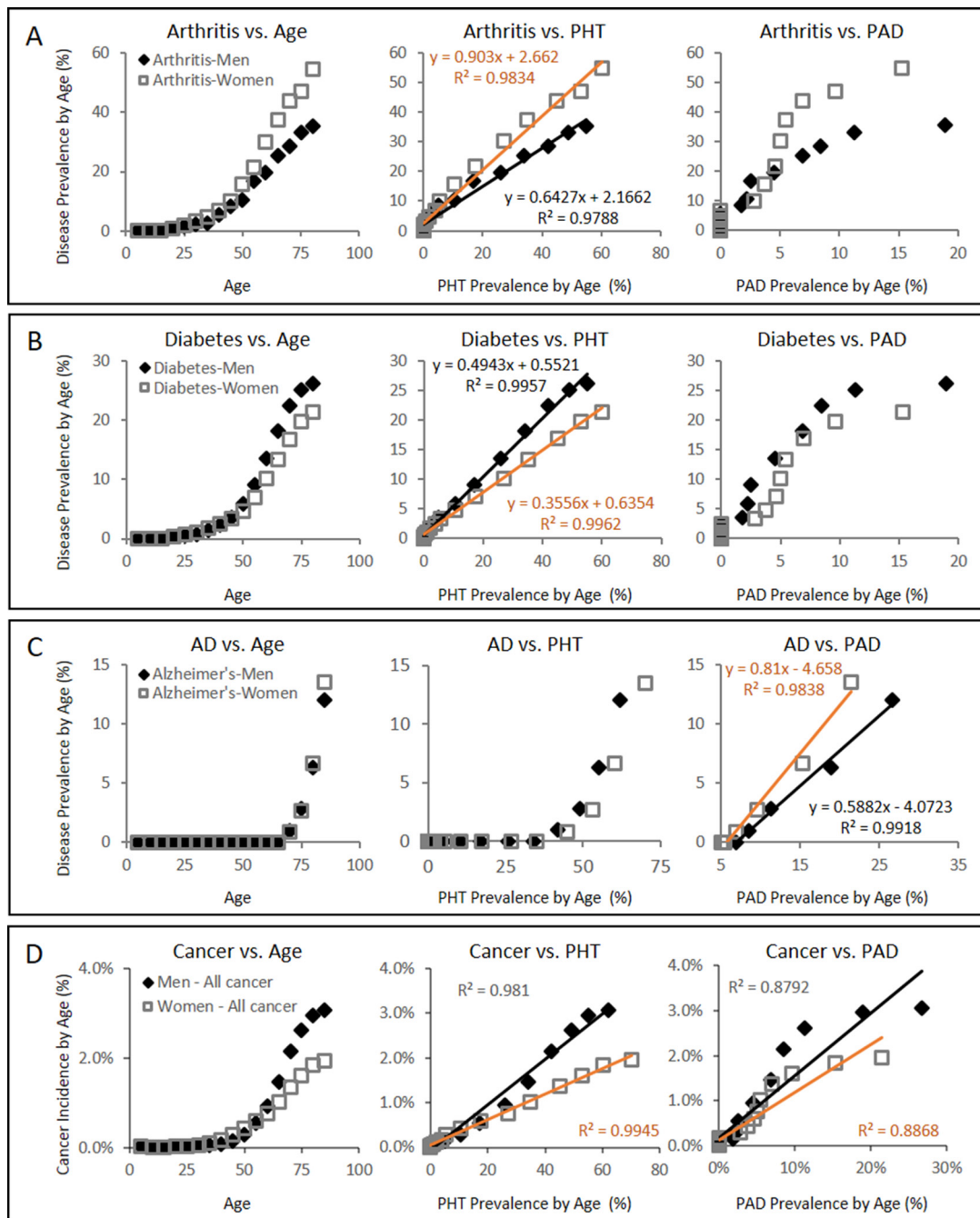
interpreted to represent the microvascular dysfunctions that can potentially result in more severe level of CFE.

Consistent with the projections regarding the pathological consequences of CFE (Figure 2B), plotting the gender and age specific prevalence of chronic microvascular diseases such as arthritis [49] and diabetes [50] against PHT prevalence [51] reveals strongly linear positive associations with correlation values ( $R^2$ ) exceeding 0.97 in both genders (Figure 3A and 3B). In turn, plotting the gender and age specific prevalence of degenerative microvascular diseases such as AD [52] against PAD prevalence [53] yet again reveals strongly linear positive associations with  $R^2$  exceeding 0.98 (Figure 3C).

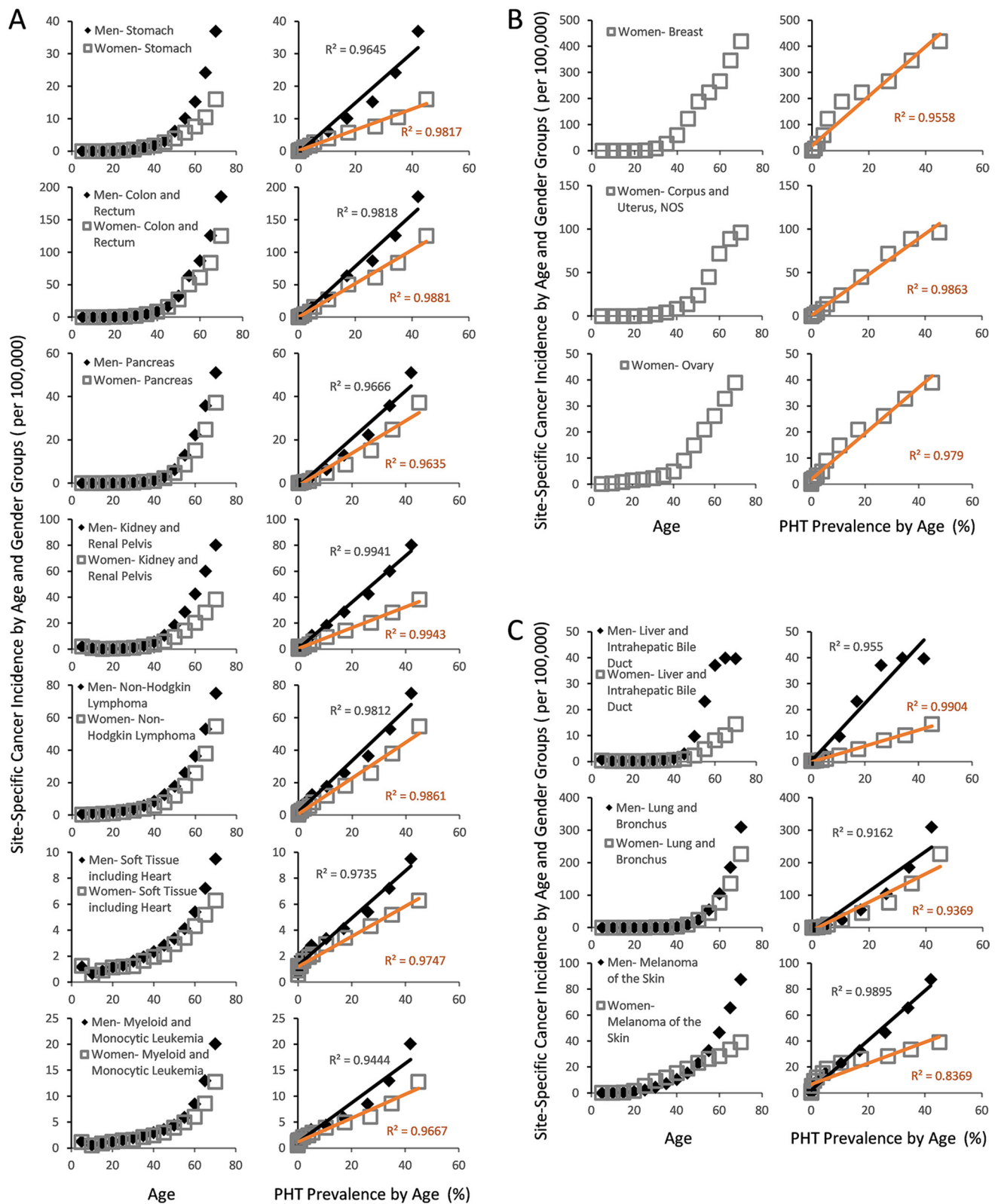
### **Evidence suggesting the involvement of endothelial dysfunction from reduced NO and CFE in clinical cancer development**

While cancer is not yet a recognized microvascular disease, our projections raises a possibility that it may yet be another disease that arises from weak CFE (Figure 2B). Using the same approach that characterized diabetes and arthritis in strongly linear association with PHT prevalence (Figure 3A and 3B), a simple plot of overall cancer incidence in each age group from SEER18 [54] against the corresponding PHT prevalence supports this hypothesis by yielding strongly linear positive associations in both genders with  $R^2$  values exceeding 0.98 (Figure 3D). Application of the same analysis across 7 major cancer types without clear predisposing factors also yields strongly linear positive associations between cancer incidence of different types and PHT prevalence at  $R^2$  exceeding 0.96 (Figure 4A), which suggests possibilities of shared etiological factors between primary hypertension development and carcinogenesis in general. Of an interesting note, same analyses on the cancer types with known predisposing factors such as gender (Figure 4B) or environmental exposures (Figure 4C) show clearly non-linear deviations from their linear association to PHT prevalence, which well-reflects the known nature of these cancer types. Meanwhile, it is interesting to note that the incidence of certain cancer types including those of prostate, lung and bronchus of men, and skin melanoma of women are uniquely characterized in stronger linear association with PAD prevalence rather than with PHT prevalence ( $R^2$  of 0.9502 vs. 0.9299, 0.9278 vs. 0.9162, and 0.8865 vs. 0.8339, respectively) which suggested a somewhat different nature of these cancer development process versus other cancer types (Figure 5).

Given the well-established etiology of PHT (Figure 2A and 2B) [21, 24, 40], these observations hint that the vasoconstrictive microvascular rarefactions from dysfunctional endothelial NO production may critically contribute to clinical carcinogenesis in general via CFE. Although the observed linear associations (Figure 3, Figure 4 and Figure 5) do not qualify as evidence of



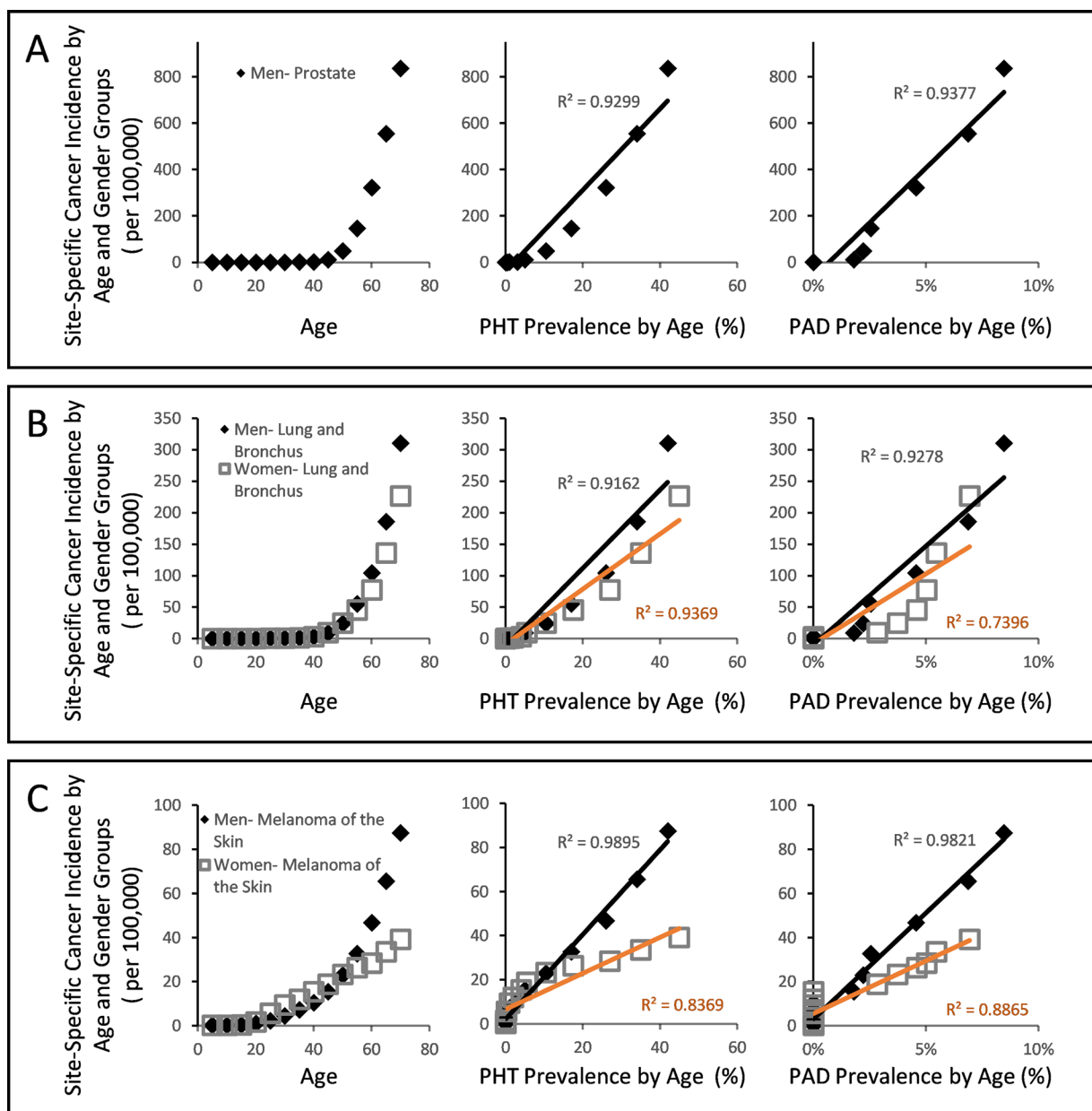
**Figure 3: Gender specific disease prevalence (%) of arthritis, diabetes, AD, and cancer with respect to PHT or PAD prevalence (%) over the course of ageing.** (A) Arthritis prevalence vs PHT or PAD prevalence showing strong linear association between the arthritis prevalence and the PHT prevalence in both male and female groups with  $R^2$  values of 0.9788 and 0.9834, respectively. (B) Diabetes prevalence vs PHT or PAD prevalence also showing strong linear association between the diabetes prevalence and the PHT prevalence in both male and female groups with  $R^2$  values of 0.9957 and 0.9962, respectively. (C) AD prevalence, on the other hand, is characterized with strong linear association with PAD prevalence in both genders with  $R^2$  values of 0.9918 and 0.9838, respectively. PAD prevalence in each gender and age group was estimated from the work by Criqui and Aboyans [53]. Health statistics data on diabetes, arthritis, cancer, and hypertension were acquired from the published statistics by Public Health Agency of Canada [49–52, 54]. (D) Gender specific overall cancer incidence between the ages of 0 and 85 from SEER18 database of USA [100] (seer.cancer.gov, accessed on Feb 26th, 2015) with respect to PHT prevalence over the course of ageing or PAD prevalence. Their strong linear association is again observed with PHT prevalence. Due to lack of the corresponding data available in the USA, gender and age-group specific PHT prevalence data from Canada was used instead [51]. SEER18 cancer statistics registries consist of the SEER13 plus Greater California, Greater Georgia, Kentucky, Louisiana, and New Jersey, and include all cases diagnosed from year 2000 and later. It is noted that SEER18 registry excluded Louisiana cases diagnosed between July ~ December 2005 to adjust for the impacts by Hurricanes Katrina and Rita.



**Figure 4: Gender and site specific cancer incidence between the ages of 0 and 70 from SEER18 database of USA [100] with respect to PHT prevalence over the course of ageing. (A) The cancer types whose incidences are not strongly influenced by environmental exposures or genetic/gender predispositions show strongly linear association with PHT prevalence. (B) Female cancer types with known genetic or hormonal predispositions also show highly linear PHT prevalence, but with notable non-linear deviations. (C) The cancer types whose incidences are strongly influenced by environmental exposures.**

this hypothesis by themselves, the hypothesis itself is alternatively supported by a store of non-clinical, retrospective and prospective studies that have shown immunity-mediated cancer preventive and antimetastatic effects of factors that promote peripheral vasodilation and endothelial NO production (Table 1). Since the initial discovery of aspirin's cancer preventive effects [55, 56], numerous retrospective studies have reported similar preventive effects across a wide range of daily drug compounds that include general non-steroidal anti-inflammatory drugs (NSAIDs) [57], metformin [58],

propranolol [59], carvedilol [60], captopril [61], losartan [62], and statins [63]. And as the cancer preventive effects were compound-specific and not generalized to their drug classes in general, the shared pleiotropic effects of promoting endothelial NO availability by these compounds and subsequent immunity-normalization effects were proposed as the common mechanism of their cancer preventive effects [64, 65]. In support of this idea, an NO-donating aspirin derivative (NO-aspirin) was characterized with NO-specific immunity-mediated cancer preventive effects, while the compound itself



**Figure 5: Gender and site specific cancer incidence between the ages of 0 and 70 from SEER18 database of USA with respect to PHT prevalence or PAD prevalence over the course of ageing.** (A) Male cancer of prostate incidence showed stronger linear association against PAD prevalence than against PHT prevalence. (B) Male cancer of lung and bronchus similarly showed stronger linear association against PAD prevalence, while the same of women did not. (C) Female skin melanoma showed stronger linear association against PAD prevalence than against PHT, while male skin melanoma did not.

**Table 1: Reports of cancer prognosis and treatment effect changes upon exposure to the affecters of microvascular circulation**

Affector	Study type	Effect	Cancer type	Circulation effect	Major findings
Physical exercise	human retrospective clinical study	↓ cancer specific mortality in cancer patients	colorectal [102], breast [103],	increased cardiac output and microperfusion	Dose-dependent reduction in cancer specific mortality in breast cancer patients with > 21 MET-h/wk (multivariate adjusted RR = 0.51, $p < 0.05$ ), in men&women with CTNNB1-negative colorectal cancer patients with > 18 MET-h/wk (multivariate adjusted RR = 0.33, $p < 0.05$ ).
Propranolol	human retrospective clinical study (70 propranolol users vs. 525 atenolol users)	↓ metastasis/ local invasiveness/ ↓ cancer-specific mortality risk [59]	breast	increased microperfusion from increased endothelial NO availability [67]	Use of propranolol, but not of atenolol, led to reduced cancer-specific mortality risk (HR: 0.19: 0.06–0.60), local invasiveness (OR: 0.24: 0.07–0.85), and metastasis risk (OR: 0.04–0.88).
Propranolol + Etoposide (PE)	human prospective clinical study (23 patients)	↑ progression-free survival/ ↑ overall survival [69]	pancreatic	increased microperfusion [67] and anti-inflammatory effects	Combined use of PE with gemcitabine/ paclitaxel (GemNab) led to increased progression-free survival (7.2 vs. 11.8 months) and overall survival (10.5 vs. 15.9 months) compared to GemNab alone.
Chemotherapy	mouse model	↑metastasis/ ↑CXCR2, CXCR4, S1P/S1PR1, PIGF and PDGF-BB in serum [104]		vasodilatory dysfunction from CXCR4 and S1P/S1PR1 overexpression. These two signals elicit vasoconstriction [105, 106].	Paclitaxel or carboplatin treatment accelerated lung metastasis with increased levels of the respective cytokines. Inhibitors of CXCR4 or S1P/S1PR1 reduced the chemo-induced metastasis and increased the median survival time by 33.9% and 40.3%, respectively.
Anti-angiogenic	mouse model	↑metastasis/ ↑tumor invasiveness [84]		vasodilatory dysfunction and capillary rarefaction [107]	Treatment with VEGFR2 inhibitor, sunitinib, or deletion of Vefg-A commonly caused increased metastasis and tumor invasiveness. This effect persisted even after cessation of anti-angiogenic treatment.
Perioperative blood transfusion	human retrospective clinical	↑tumor recurrence/ ↓survival/ ↓recurrence-free survival [108]	colon, kidney, lung, non-Hodgkin's lymphoma, etc.	microvascular vasodilatory dysfunction due to depleted NO in transfusion blood [109]	Colon cancer patients who received transfusions showed poorer survival and tumor recurrence outcome in dose-dependent manner. Similar patterns were observed in some other cancer types as well. Also, transfusion was linked with two-fold increased risk of non-Hodgkin's lymphoma. These effects are suspected to involve immunity anomalies.
Reduced housing temperature	mouse model	↑tumor progression/ ↑metastasis/ ↑carcinogenesis [110]		peripheral vasoconstriction	Housing temperature reduction from 30–31°C to 22–23°C nearly doubled tumor growth rate, promoted metastasis and chemical carcinogenesis in immunocompetent mice. Immunodeficient mice did not show the same effect. This effect was driven by reduced accumulation of CD8+ T cells in tumor microenvironments. Core temperature of the animals remained constant.
Surgery stress	rat model	↑lung metastasis [76]	lung	β-adrenergic activation/ ↑endothelin-1/ vasoconstriction [111]	Surgery stress reduced pulmonary marginating NK cell numbers and activity, leading to increased lung metastasis of MADB106 cancer cells by seven fold. Postoperative treatment with non-selective β-blocker nadolol and NSAID indomethacin reduced this effect by 75% ( $p < 0.0003$ ).



was not characterized with a direct antitumor effect [66]. Similar benefits were not observed in non-modified aspirins. And as cancer immunity is also critical in prevention of metastasis or recurrence after the initial treatments, retrospective studies have also reported that the use of incidental use of propranolol, an endothelial NO-promoting  $\beta$ -blocker [67], in breast cancer patients, led to significantly reduced chances of distant metastasis ( $p = 0.026$ ) and secondary tumor formation ( $p = 0.001$ ) via immunity-mediated effects. This led to a longer disease free interval ( $p = 0.01$ ) and 71% reduction in breast cancer mortality after 10 years (Hazard ratio = 0.291; 95% CI = 0.119–0.715,  $p = 0.007$ ) [68]. Prospective clinical investigation of propranolol use as an adjuvant in the pancreatic cancer treatment with Nab-paclitaxel also reported consistent results [69], further supporting its clinical benefits. Together these findings suggest that cancer immunosurveillance is critically influenced by the availability of endothelial NO, which is known to increase both microcirculation (see the review, [70]) and individual NK cell tumoricidal activity [28].

### **A revised view on clinical carcinogenesis and cancer treatment in context of CFE**

Although classical perspectives on carcinogenesis regarded age-dependent accumulation of cancer-causing mutations as the dominant causal factor in natural carcinogenesis [71], an accumulating body of evidence suggests otherwise, as oncogenic mutations were found necessary, but not sufficient, for tumorigenesis [6, 72, 73]. In explaining this paradox, it was recently suggested that the carcinogenesis in humans was likely caused by changing features of old tissues promoting cancer formation [6]. Given the fact that ageing is characterized by constrictive endothelial dysfunctions, reduced basal NO level, and progressive degeneration in capillary beds [33, 35, 36], this suggestion is consistent with the proposed theory that the progressive appearances of local tissues with hemodynamically reduced blood cell access over the course of ageing might contribute to elevating the cancer incidence by limiting the tissue access by the RBCs and, to a greater extent, immune cells. Reminiscent of tumor microenvironment theory [4], an apparent consequence of such reduced tissue access by RBCs is chronic hypoxia, which is a strong selection force and a promoting factor for carcinogenesis [74]. And as restricted immune cell access is expected in the same regions (Figure 2), increased odds of immune-escape by microscopic lesions may be expected in the ageing tissues or in those characterized with capillary rarefactions. This is a simple explanation as to how and why the tumor-promoting microenvironment emerges over the course of ageing, which no conventional theory of carcinogenesis could sufficiently explain. In this new view, carcinogenic microenvironments may be defined as suitably hypoxic

capillary networks for clonal expansion within a tissue bed, with hemodynamically restricted immune cell access that allows for protected clonal expansion of the “seed” cancer cells. Consistent with our view, positional effect is observed in carcinogenesis of clinical colorectal cancer whereby carcinogenesis is exclusively started at the top end of colonic crypt where stem cell is absent and proliferation signal is paradoxically low [75]. While conventional theory of stem cell-initiated carcinogenesis in the colonic crypts of colorectal cancer cannot account for this paradox [7], our new view based on CFE simply explains such positional effect with the finest capillary structures at the top of colonic crypt whereby the immunity access is first-likely to be compromised upon onset of the ageing-related microvascular rarefaction (Figure 6).

This newly realized importance of microvascular hemodynamics in clinical carcinogenesis gives rise to the concept of effective cancer immunity (ECI), which is a natural derivative of the idea that microvascular immunity must be a composite function between the microvascular immunity cell availability and their individual cell activity ( $ECI = \text{microvascular hemodynamics} \times \text{individual immunity cell activity}$ ). This idea has immediate implications for optimizing current cancer treatments that are widely practiced in frontline clinics, as it implies potential links between vascular toxicity and poor microcirculation with elevated risks of distant metastasis and secondary tumor formation. In support of this idea, surgery stress with subsequent activation of  $\beta$ -adrenergic receptor activation alone was shown to cause reduced margination of NK cells into the lungs of rats with subsequently increased pulmonary metastatic burden, and this effect was demonstrated to be fully reversible by simple administration of a non-specific  $\beta$ -blocker nadolol and an NSAID indomethacin [76]. Also, cancer treatments with acknowledged vascular toxicity including radiation [77, 78], cytotoxins [79, 80], and anti-angiogenics [81] have been characterized with more frequent distant metastasis [82–86]. Although the vascular toxicities of the treatments at the primary tumor site and the subsequent hypoxia have been proposed as the primary driver of the cancer metastasis by promoting the formation of premetastatic niche in distant tissues [87], our view suggests vascular toxicities of the treatments themselves as the direct driver of spontaneous premetastatic niche and carcinogenic microenvironments formation across the system for elevated risks of metastasis and recurrence. In support of this new view, *in vivo* mouse model study showed that chemotherapeutic pretreatment with cisplatin or paclitaxel prior to tumor cell injection significantly enhanced pulmonary metastasis by increasing the endothelial cells expressing VEGFR1 [88], which was shown to be overexpressed in the endothelial cells of lung, heart, kidney, brain and liver upon systemic hypoxia [89]. Furthermore, failure of recurrent glioblastoma treatment with an antiangiogenic agent bevacizumab was reported to be primarily due to local recurrence (46%, 17/37) and

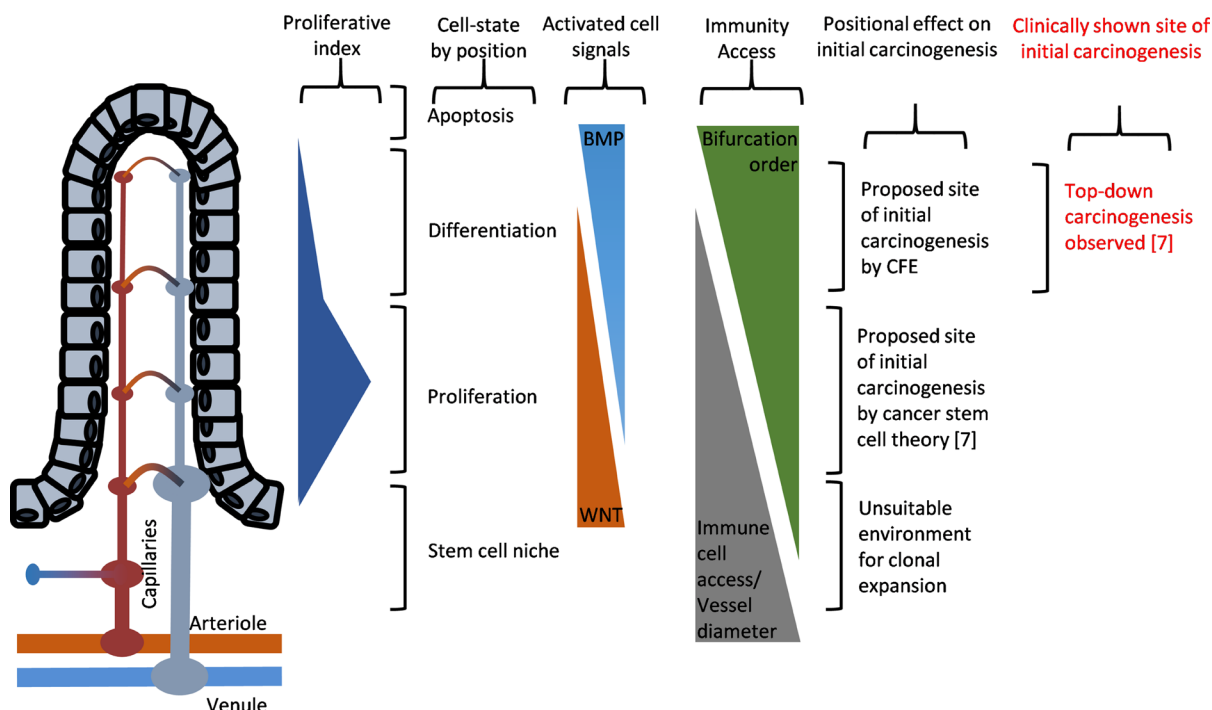
formation of multifocal new enhancing lesions outside of the initial site of the disease (16%, 6/37) [90].

### CFE implications to cancer immunotherapeutics

In addition to its implications for chemoprevention, CFE may be the key in explaining the recent phase III clinical development (P3) failures of some of the most-anticipated “universal” cancer immunotherapeutics [91–93]. Briefly, late-stage clinical study results on these advanced immunity-based anti-cancer therapeutics have been disappointing despite their promising non-clinical and earlier phase clinical study results, which included, among others, a MUC1 antigen-specific Tecemotide [91] (Merck KGaA, Darmstadt), MAGE-A3 antigen-specific cancer immunotherapeutics [92] (GSK, London), and an hTERT epitope-specific peptide vaccine GV1001 [93] (Kael & Gemvax, Seoul). Given the fact that these clinical trial protocols involved adjuvant use of cytotoxin or chemoradiation therapies with severe vascular toxicities [77–79], progressive development of CFE would lead to hemodynamically inhibited microvascular immunity with effective nullification of the immunotherapeutic effects during the extended trial period of P3. In support of this view, the P3 results on Tecemotide showed that its treatment group with shorter exposure time to chemoradiation via concurrent chemoradiotherapy was

characterized with longer medial overall survival (MOS) versus its placebo group (30.8 months vs. 20.6 months, respectively; adjusted HR = 0.78, 0.64–0.95,  $p = 0.016$ ), while the treatment group with longer exposure to chemoradiation via sequential chemoradiotherapy showed no survival benefits versus its respective placebo group (19.4 months vs. 24.6 months, respectively; adjusted HR 1.12, 0.97–1.44;  $p = 0.38$ ). In further support of the adverse role of CFE and vascular toxicity against effective cancer immunity, the phase III clinical trial study on GV1001 showed successful induction of immune response without clinical efficacy [93]. Particularly, its post-trial analysis reported paradoxically enhanced survival benefit among pancreatic cancer patients with elevated level of the pro-inflammatory chemokine eotaxin (14.8 [10.1–20.5] months MOS in high eotaxin group versus 7.9 [5.9–11.3] months MOS in low eotaxin group;  $p = 0.0135$ ) [94], which is known to elicit angiogenic responses *in vivo* [95] and a significant increase in endothelial NO production [96]. More importantly, it was also reported that only the patients with preserved high eotaxin level during the chemoimmunotherapy regimen were characterized with longer MOS, while those whose eotaxin level was reduced by the chemoimmunotherapy regimen did not.

Together, our CFE-based interpretation of the P3 findings from these advanced immunity-based cancer therapeutics suggest that similar cancer-targeting



**Figure 6: Illustrated diagram showing the paradoxical positional effects of the carcinogenesis model in the colonic crypts of colorectal cancer.** The proposed site of initial carcinogenesis via clonal expansion of the initiated cells, according to cancer stem cell theory, is at the bottom of the colonic crypts where the cell proliferation signals are innately up-regulated [7], but with wider capillary vessel dimensions. Evidence from clinical human specimens, on the other hand, showed that initial carcinogenesis exclusively started from the top of the colonic crypt and progressed down the colonic crypt [75]. This illustration is largely based on the description of cancer stem cell theory of colorectal cancer by McDonald *et al.* [101].

immunotherapeutics may be incompatible with conventional cytotoxins and chemoradiation treatments. Conversely, these considerations raise a possibility that their efficacies may be optimized by incorporating endothelial NO-inducing or NO-donating drugs such as carvedilol [97], nebivolol [97], statins [98], or metformin [99].

In a concluding remark, future prospective clinical investigations are needed in optimizing the current cancer treatment regimens via minimization of their inherent vascular toxicities. As there are many approved vasoprotective drug agents of historical safety and economic affordability with demonstrated cancer preventive and antimetastatic effects [64], confirmation of their adjuvant cancer treatment benefits may allow for an highly effective and affordable improvements in cancer treatment at low economic costs. Also, the theoretical considerations surrounding CFE raise the possibilities of future research venue involving biophysical data of microvascular health and its use in pre-onset risk assessment of cancer metastasis, recurrence, and perhaps the very first carcinogenesis itself. Incorporation of the enabling information technologies into clinical cancer research will be vital for advancing such developments.

## ACKNOWLEDGMENTS AND FUNDING

The authors acknowledge valuable discussions with Prof. TJ Park of Chung-Ang University, Dr. TS Kim of Sam Hospital, Dr. Y. Norihisa of Cheongshim International Medical Center, and proofing by Mr. G. Irving of Xylonix.

## CONFLICTS OF INTEREST

JFC is a director at Xylonix Pte. Ltd. SJL and AKS declares no conflicts of interests. Publication costs for this review were defrayed in part by the payment of page charges. This publication must therefore be marked "advertisement" in accordance with 18 USC section 1734 solely to indicate this fact.

## REFERENCES

1. Ehrlich P. Ueber den jetzigen stand der karzinomforschung. *Ned Tijdschr Genees*. 1909; 73–290.
2. Burnet M. Cancer; a biological approach. I. The processes of control. *BMJ*. 1957; 1:779–786.
3. Dunn GP, Bruce AT, Ikeda H, Old LJ, Schreiber RD. Cancer immunoediting: from immunosurveillance to tumor escape. *Nat Immunol*. 2002; 3:991–998.
4. Gatenby RA, Gillies RJ. A microenvironmental model of carcinogenesis. *Nat Rev Cancer*. 2008; 8:56–61.
5. Cramer DW, Finn OJ. Epidemiologic perspective on immune-surveillance in cancer. *Curr Opin Immunol*. 2011; 23:265–271.

6. DeGregori J. Challenging the axiom: does the occurrence of oncogenic mutations truly limit cancer development with age? *Oncogene*. 2013; 32:1869–1875.
7. Luebeck EG, Moolgavkar SH. Multistage carcinogenesis and the incidence of colorectal cancer. *Proc Natl Acad Sci U S A*. 2002; 99:15095–15100.
8. Radisauskas R, Kuzmickiene I, Milinaviciene E, Everatt R. Hypertension, serum lipids and cancer risk: A review of epidemiological evidence. *Medicina (Kaunas)*. 2016; 52:89–98.
9. Liang Z, Xie B, Li J, Wang X, Wang S, Meng S, Ji A, Zhu Y, Xu X, Zheng X, Xie L. Hypertension and risk of prostate cancer: a systematic review and meta-analysis. *Sci Rep*. 2016; 6:31358.
10. Lee IM. Physical activity and cancer prevention--data from epidemiologic studies. *Med Sci Sports Exerc*. 2003; 35:1823–1827.
11. Lofffield E, Freedman ND, Graubard BI, Hollenbeck AR, Shebl FM, Mayne ST, Sinha R. Coffee drinking and cutaneous melanoma risk in the NIH-AARP diet and health study. *J Natl Cancer Inst*. 2015; 107.
12. Sternstein HJ. The use of antibiotics and vasodilators in atrophic rhinitis (ozena); preliminary report. *N Engl J Med*. 1951; 245:165–171.
13. Ben-Ami R, Lewis RE, Leventakos K, Kontoyiannis DP. *Aspergillus fumigatus* inhibits angiogenesis through the production of gliotoxin and other secondary metabolites. *Blood*. 2009; 114:5393–5399.
14. Ben-Ami R, Albert ND, Lewis RE, Kontoyiannis DP. Proangiogenic growth factors potentiate *in situ* angiogenesis and enhance antifungal drug activity in murine invasive aspergillosis. *J Infect Dis*. 2013; 207:1066–1074.
15. Wheater PR, Burkitt HG, Daniels VG. *Functional histology: a text and colour atlas*. Edinburgh; New York, New York: Churchill Livingstone; distributed in the U.S. by Longman. 1979.
16. Lefer AM, Lefer DJ. The role of nitric oxide and cell adhesion molecules on the microcirculation in ischaemia-reperfusion. *Cardiovasc Res*. 1996; 32:743–751.
17. Woodman CR, Price EM, Laughlin MH. Selected Contribution: Aging impairs nitric oxide and prostacyclin mediation of endothelium-dependent dilation in soleus feed arteries. *J Appl Physiol* (1985). 2003; 95:2164–2170.
18. Taddei S, Virdis A, Ghiadoni L, Versari D, Salvetti A. Endothelium, aging, and hypertension. *Curr Hypertens Rep*. 2006; 8:84–89.
19. Lentz SR, Sobey CG, Piegors DJ, Bhopatkar MY, Faraci FM, Malinow MR, Heistad DD. Vascular dysfunction in monkeys with diet-induced hyperhomocyst(e)inemia. *J Clin Invest*. 1996; 98:24–29.
20. Silverman MD, Tumuluri RJ, Davis M, Lopez G, Rosenbaum JT, Lelkes PI. Homocysteine upregulates vascular cell adhesion molecule-1 expression in cultured

- human aortic endothelial cells and enhances monocyte adhesion. *Arterioscler Thromb Vasc Biol.* 2002; 22:587–592.
21. Pries AR, Secomb TW, Gaetgens P, Gross JF. Blood flow in microvascular networks. Experiments and simulation. *Circ Res.* 1990; 67:826–834.
  22. Gaetgens P. Distribution of flow and red cell flux in the microcirculation. *Scand J Clin Lab Invest Suppl.* 1981; 156:83–87.
  23. Levin M, Dawant B, Popel AS. Effect of dispersion of vessel diameters and lengths in stochastic networks. II. Modeling of microvascular hematocrit distribution. *Microvasc Res.* 1986; 31:223–234.
  24. Ley K, Pries AR, Gaetgens P. Preferential distribution of leukocytes in rat mesentery microvessel networks. *Pflugers Arch.* 1988; 412:93–100.
  25. Tuma RF, Duran WD, Ley K. *Microcirculation.* Amsterdam; Boston: Elsevier/Academic Press. 2008.
  26. Sato Y, Walley KR, Klut ME, English D, D'yachkova Y, Hogg JC, van Eeden SF. Nitric oxide reduces the sequestration of polymorphonuclear leukocytes in lung by changing deformability and CD18 expression. *Am J Respir Crit Care Med.* 1999; 159:1469–1476.
  27. De Caterina R, Libby P, Peng HB, Thannickal VJ, Rajavashisth TB, Gimbrone MA Jr, Shin WS, Liao JK. Nitric oxide decreases cytokine-induced endothelial activation. Nitric oxide selectively reduces endothelial expression of adhesion molecules and proinflammatory cytokines. *J Clin Invest.* 1995; 96:60–68.
  28. Cifone MG, Ullisse S, Santoni A. Natural killer cells and nitric oxide. *Int Immunopharmacol.* 2001; 1:1513–1524.
  29. Bagge U, Amundson B, Lauritzen C. White blood cell deformability and plugging of skeletal muscle capillaries in hemorrhagic shock. *Acta Physiol Scand.* 1980; 108:159–163.
  30. Eppihimer MJ, Lipowsky HH. Effects of leukocyte-capillary plugging on the resistance to flow in the microvasculature of cremaster muscle for normal and activated leukocytes. *Microvasc Res.* 1996; 51:187–201.
  31. Forstermann U, Closs EI, Pollock JS, Nakane M, Schwarz P, Gath I, Kleinert H. Nitric oxide synthase isozymes. Characterization, purification, molecular cloning, and functions. *Hypertension.* 1994; 23:1121–1131.
  32. Celermajer DS, Sorensen KE, Spiegelhalter DJ, Georgakopoulos D, Robinson J, Deanfield JE. Aging is associated with endothelial dysfunction in healthy men years before the age-related decline in women. *J Am Coll Cardiol.* 1994; 24:471–476.
  33. Barton M, Cosentino F, Brandes RP, Moreau P, Shaw S, Luscher TF. Anatomic heterogeneity of vascular aging: role of nitric oxide and endothelin. *Hypertension.* 1997; 30:817–824.
  34. Jacques PF, Rosenberg IH, Rogers G, Selhub J, Bowman BA, Gunter EW, Wright JD, Johnson CL. Serum total homocysteine concentrations in adolescent and adult Americans: results from the third National Health and Nutrition Examination Survey. *Am J Clin Nutr.* 1999; 69:482–489.
  35. Hernandez N, Torres SH, Finol HJ, Vera O. Capillary changes in skeletal muscle of patients with essential hypertension. *Anat Rec.* 1999; 256:425–432.
  36. Hamasaki DI, Fujino T. Effect of intraocular pressure on ocular vessels. Filling with India ink. *Arch Ophthalmol.* 1967; 78:369–379.
  37. Bor-Kucukatay M, Wenby RB, Meiselman HJ, Baskurt OK. Effects of nitric oxide on red blood cell deformability. *Am J Physiol Heart Circ Physiol.* 2003; 284:H1577–1584.
  38. Chen C, Conklin BS, Ren Z, Zhong DS. Homocysteine decreases endothelium-dependent vasorelaxation in porcine arteries. *J Surg Res.* 2002; 102:22–30.
  39. Pruefer D, Scalia R, Lefler AM. Homocysteine provokes leukocyte-endothelium interaction by downregulation of nitric oxide. *Gen Pharmacol.* 1999; 33:487–498.
  40. Pries AR. Microcirculation in hypertension and cardiovascular disease. *Eur Heart J Suppl.* 2014 (Suppl A); 16:A28–A29.
  41. de la Torre JC, Stefano GB. Evidence that Alzheimer's disease is a microvascular disorder: the role of constitutive nitric oxide. *Brain Res Brain Res Rev.* 2000; 34:119–136.
  42. Panoulas VF, Douglas KM, Milionis HJ, Stavropoulos-Kalinglou A, Nightingale P, Kita MD, Tselios AL, Metsios GS, Elisaf MS, Kitis GD. Prevalence and associations of hypertension and its control in patients with rheumatoid arthritis. *Rheumatology (Oxford).* 2007; 46:1477–1482.
  43. Muz B, Khan MN, Kiriakidis S, Paleolog EM. Hypoxia. The role of hypoxia and HIF-dependent signalling events in rheumatoid arthritis. *Arthritis Res Ther.* 2009; 11:201.
  44. Wiernsperger N, Nivoit P, De Aguiar LG, Bouskela E. Microcirculation and the metabolic syndrome. *Microcirculation.* 2007; 14:403–438.
  45. Yu CW, Shih TT, Hsu CY, Lin LC, Wei SY, Lee CM, Lee YT. Correlation between pancreatic microcirculation and type 2 diabetes in patients with coronary artery disease: dynamic contrast-enhanced MR imaging. *Radiology.* 2009; 252:704–711.
  46. Carretero OA, Oparil S. Essential hypertension. Part I: definition and etiology. *Circulation.* 2000; 101:329–335.
  47. Lee RM. *Blood vessel changes in hypertension: structure and function.* Boca Raton (Fla.): CRC Press. 1989.
  48. Ritter LS, Orozco JA, Coull BM, McDonagh PF, Rosenblum WI. Leukocyte accumulation and hemodynamic changes in the cerebral microcirculation during early reperfusion after stroke. *Stroke.* 2000; 31:1153–1161.
  49. O'Donnell S, Lagacé C, McRae L, Bancej C. Life with Arthritis in Canada: A Personal and public health challenge. *Chronic Dis Inj Can.* 2011; 31:135–6.
  50. Public Health Agency of Canada. Report from the National Diabetes Surveillance System: Diabetes in Canada, 2009. Prevalence Percentages of Diagnosed Diabetes among People Aged 1 Year and Older by Age Group and Sex, Canada, 2006–07. <http://www.phac-aspc.gc.ca/publicat/2009/ndssdic-snsddac-09/pdf/report-2009-eng.pdf>.

51. Ministry of Health Services BC. Hypertension Incidence and Prevalence, Age-Specific Rates, By Gender, B.C., 2001/2002. 2003. [http://www.health.gov.bc.ca/library/publications/year/2002/cdm/hypertension\\_2001\\_2002.pdf](http://www.health.gov.bc.ca/library/publications/year/2002/cdm/hypertension_2001_2002.pdf).
52. Public Health Agency of Canada. Mapping Connections: An understanding of neurological conditions in Canada. Prevalence of Alzheimer's disease and other dementias, by sex and age group, British Columbia, 2009/2010. 2014. Government of Canada: Reports and Publications. <https://www.canada.ca/en/public-health/services/reports-publications/mapping-connections-understanding-neurological-conditions/mapping-connections-understanding-neurological-conditions-canada-13.html#fig3-1>.
53. Criqui MH, Aboyans V. Epidemiology of peripheral artery disease. *Circ Res*. 2015; 116:1509–1526.
54. Ellison LF, Wilkins K. Cancer prevalence in the Canadian population. *Health Rep*. 2009; 20:7–19.
55. Schreinemachers DM, Everson RB. Aspirin use and lung, colon, and breast cancer incidence in a prospective study. *Epidemiology*. 1994; 5:138–146.
56. Giovannucci E, Rimm EB, Stampfer MJ, Colditz GA, Ascherio A, Willett WC. Aspirin use and the risk for colorectal cancer and adenoma in male health professionals. *Ann Intern Med*. 1994; 121:241–246.
57. Harris RE, Namboodiri KK, Farrar WB. Nonsteroidal antiinflammatory drugs and breast cancer. *Epidemiology*. 1996; 7:203–205.
58. Libby G, Donnelly LA, Donnan PT, Alessi DR, Morris AD, Evans JM. New users of metformin are at low risk of incident cancer: a cohort study among people with type 2 diabetes. *Diabetes Care*. 2009; 32:1620–1625.
59. Barron TI, Connolly RM, Sharp L, Bennett K, Visvanathan K. Beta blockers and breast cancer mortality: a population- based study. *J Clin Oncol*. 2011; 29:2635–2644.
60. Lin CS, Lin WS, Lin CL, Kao CH. Carvedilol use is associated with reduced cancer risk: A nationwide population-based cohort study. *Int J Cardiol*. 2015; 184:9–13.
61. Ronquist G, Rodriguez LA, Ruigomez A, Johansson S, Wallander MA, Frithz G, Svardstudd K. Association between captopril, other antihypertensive drugs and risk of prostate cancer. *Prostate*. 2004; 58:50–56.
62. Chang CH, Lin JW, Wu LC, Lai MS. Angiotensin receptor blockade and risk of cancer in type 2 diabetes mellitus: a nationwide case-control study. *J Clin Oncol*. 2011; 29:3001–3007.
63. Graaf MR, Beiderbeck AB, Egberts AC, Richel DJ, Guchelaar HJ. The risk of cancer in users of statins. *J Clin Oncol*. 2004; 22:2388–2394.
64. Chung JF, Lee SJ, Sood AK. Immunological and pleiotropic effects of individual beta-blockers and their relevance in cancer therapies. *Expert Opin Investig Drugs*. 2016.
65. Chung JF, Yoon CJ, Cheon SA, Seo ES, Park SH, Yang JS, Kim B, Joo MY, Park TJ, Kim KH, Sood AK, Lee SJ. NO-dependent attenuation of TPA-induced immunoinflammatory skin changes in Balb/c mice by pindolol, heptaminol or ATRA, but not by verapamil. *Oncotarget*. 2016; 7:47576–85. <https://doi.org/10.18632/oncotarget.10217>.
66. De Santo C, Serafini P, Marigo I, Dolcetti L, Bolla M, Del Soldato P, Melani C, Guiducci C, Colombo MP, Iezzi M, Musiani P, Zanovello P, Bronte V. Nitroaspirin corrects immune dysfunction in tumor-bearing hosts and promotes tumor eradication by cancer vaccination. *Proc Natl Acad Sci U S A*. 2005; 102:4185–4190.
67. Priviero FB, Teixeira CE, Toque HA, Claudino MA, Webb RC, De Nucci G, Zanesco A, Antunes E. Vasorelaxing effects of propranolol in rat aorta and mesenteric artery: a role for nitric oxide and calcium entry blockade. *Clin Exp Pharmacol Physiol*. 2006; 33:448–455.
68. Powe DG, Voss MJ, Zanker KS, Habashy HO, Green AR, Ellis IO, Entschladen F. Beta-blocker drug therapy reduces secondary cancer formation in breast cancer and improves cancer specific survival. *Oncotarget*. 2010; 1:628–638. <https://doi.org/10.18632/oncotarget.197>.
69. Bhattacharyya GS, Babu KG, Bondarde SA, Biswas G, Ranade A, Parikh PM, Bascomb NF, Malhotra H. Effect of coadministered beta blocker and COX-2 inhibitor to patients with pancreatic cancer prior to receiving albumin-bound (Nab) paclitaxel. *J Clin Oncol*. 2015; 33:302.
70. Shu X, Keller TC 4th, Begandt D, Butcher JT, Biwer L, Keller AS, Columbus L, Isakson BE. Endothelial nitric oxide synthase in the microcirculation. *Cell Mol Life Sci*. 2015; 72:4561–4575.
71. Armitage P, Doll R. The age distribution of cancer and a multi-stage theory of carcinogenesis. *Br J Cancer*. 1954; 8:1–12.
72. Lynch M. Evolution of the mutation rate. *Trends Genet*. 2010; 26:345–352.
73. Frank SA. Evolution in health and medicine Sackler colloquium: Somatic evolutionary genomics: mutations during development cause highly variable genetic mosaicism with risk of cancer and neurodegeneration. *Proc Natl Acad Sci U S A*. 2010 (Suppl 1); 107:1725–1730.
74. Fang JS, Gillies RD, Gatenby RA. Adaptation to hypoxia and acidosis in carcinogenesis and tumor progression. *Semin Cancer Biol*. 2008; 18:330–337.
75. Shih IM, Wang TL, Traverso G, Romans K, Hamilton SR, Ben-Sasson S, Kinzler KW, Vogelstein B. Top-down morphogenesis of colorectal tumors. *Proc Natl Acad Sci U S A*. 2001; 98:2640–2645.
76. Melamed R, Rosenne E, Shakhar K, Schwartz Y, Abudarham N, Ben-Eliyahu S. Marginating pulmonary-NK activity and resistance to experimental tumor metastasis: suppression by surgery and the prophylactic use of a beta-adrenergic antagonist and a prostaglandin synthesis inhibitor. *Brain Behav Immun*. 2005; 19:114–126.
77. Stewart FA, Hoving S, Russell NS. Vascular damage as an underlying mechanism of cardiac and cerebral toxicity in irradiated cancer patients. *Radiat Res*. 2010; 174:865–869.
78. Veinot JP, Edwards WD. Pathology of radiation-induced heart disease: a surgical and autopsy study of 27 cases. *Hum Pathol*. 1996; 27:766–773.

79. Doll DC, Ringenberg QS, Yarbrow JW. Vascular toxicity associated with antineoplastic agents. *J Clin Oncol.* 1986; 4:1405–1417.
80. Samuels BL, Vogelzang NJ, Kennedy BJ. Severe vascular toxicity associated with vinblastine, bleomycin, and cisplatin chemotherapy. *Cancer Chemother Pharmacol.* 1987; 19:253–256.
81. Pande A, Lombardo J, Spangenthal E, Javle M. Hypertension secondary to anti-angiogenic therapy: experience with bevacizumab. *Anticancer Res.* 2007; 27:3465–3470.
82. Badib AO, Kurohara SS, Webster JH, Pickren JW. Metastasis to organs in carcinoma of the uterine cervix. Influence of treatment on incidence and distribution. *Cancer.* 1968; 21:434–439.
83. Ramsay J, Suit HD, Sedlacek R. Experimental studies on the incidence of metastases after failure of radiation treatment and the effect of salvage surgery. *Int J Radiat Oncol Biol Phys.* 1988; 14:1165–1168.
84. Paez-Ribes M, Allen E, Hudock J, Takeda T, Okuyama H, Vinals F, Inoue M, Bergers G, Hanahan D, Casanovas O. Antiangiogenic therapy elicits malignant progression of tumors to increased local invasion and distant metastasis. *Cancer Cell.* 2009; 15:220–231.
85. Ebos JM, Lee CR, Cruz-Munoz W, Bjarnason GA, Christensen JG, Kerbel RS. Accelerated metastasis after short-term treatment with a potent inhibitor of tumor angiogenesis. *Cancer Cell.* 2009; 15:232–239.
86. Amer MH. Chemotherapy and pattern of metastases in breast cancer patients. *J Surg Oncol.* 1982; 19:101–105.
87. Lu X, Kang Y. Hypoxia and hypoxia-inducible factors: master regulators of metastasis. *Clin Cancer Res.* 2010; 16:5928–5935.
88. Daenen LG, Roodhart JM, van Amersfoort M, Dehnad M, Roessingh W, Ulfman LH, Derksen PW, Voest EE. Chemotherapy enhances metastasis formation via VEGFR-1-expressing endothelial cells. *Cancer Res.* 2011; 71:6976–6985.
89. Marti HH, Risau W. Systemic hypoxia changes the organ-specific distribution of vascular endothelial growth factor and its receptors. *Proc Natl Acad Sci U S A.* 1998; 95:15809–15814.
90. Iwamoto FM, Abrey LE, Beal K, Gutin PH, Rosenblum MK, Reuter VE, DeAngelis LM, Lassman AB. Patterns of relapse and prognosis after bevacizumab failure in recurrent glioblastoma. *Neurology.* 2009; 73:1200–1206.
91. Butts C, Socinski MA, Mitchell PL, Thatcher N, Havel L, Krzakowski M, Nawrocki S, Ciuleanu TE, Bosquee L, Trigo JM, Spira A, Tremblay L, Nyman J, et al, and START trial team Tecemotide (L-BLP25) versus placebo after chemoradiotherapy for stage III non-small-cell lung cancer (START): a randomised, double-blind, phase 3 trial. *Lancet Oncol.* 2014; 15:59–68.
92. GSK. Update on phase III clinical trial of investigational MAGE-A3 antigen-specific cancer immunotherapeutic in non-small cell lung cancer. 02 April 2014. <http://us.gsk.com/en-us/media/press-releases/2014/update-on-phase-iii-clinical-trial-of-investigational-mage-a3-antigen-specific-cancer-immunotherapeutic-in-non-small-cell-lung-cancer>.
93. Middleton G, Silcocks P, Cox T, Valle J, Wadsley J, Propper D, Coxon F, Ross P, Madhusudan S, Roques T, Cunningham D, Falk S, Wadd N, et al. Gemcitabine and capecitabine with or without telomerase peptide vaccine GV1001 in patients with locally advanced or metastatic pancreatic cancer (TeloVac): an open-label, randomised, phase 3 trial. *Lancet Oncol.* 2014; 15:829–840.
94. Neoptolemos JP, Greenhalf W, Cox TF, Costello E, Shaw V, Juan W, Valle JW, Coxon FY, Wadsley J, Propper D, Ross PJ, Madhusudan S, Roques T, et al. Predictive cytokine biomarkers for survival in patients with advanced pancreatic cancer randomized to sequential chemoimmunotherapy comprising gemcitabine and capecitabine (GemCap) followed by the telomerase vaccine GV1001 compared to concurrent chemoimmunotherapy in the TeloVac phase III trial. *J Clin Oncol.* 2014 (Suppl); 32:4121.
95. Salcedo R, Young HA, Ponce ML, Ward JM, Kleinman HK, Murphy WJ, Oppenheim JJ. Eotaxin (CCL11) induces *in vivo* angiogenic responses by human CCR3+ endothelial cells. *J Immunol.* 2001; 166:7571–7578.
96. Hanazawa T, Antuni JD, Kharitonov SA, Barnes PJ. Intranasal administration of eotaxin increases nasal eosinophils and nitric oxide in patients with allergic rhinitis. *J Allergy Clin Immunol.* 2000; 105(1 Pt 1):58–64.
97. Kalinowski L, Dobrucki LW, Szczepanska-Konkel M, Jankowski M, Martyniec L, Angielski S, Malinski T. Third-generation beta-blockers stimulate nitric oxide release from endothelial cells through ATP efflux: a novel mechanism for antihypertensive action. *Circulation.* 2003; 107:2747–2752.
98. Dobrucki LW, Kalinowski L, Dobrucki IT, Malinski T. Statin-stimulated nitric oxide release from endothelium. *Med Sci Monit.* 2001; 7:622–627.
99. Serezhenkov VA, Kuznetsov IS, Romantsova TI, Kuznetsova MI, Vanin AF. [Antidiabetic drug metformin is a donor of nitric oxide: ESR measurement of efficiency]. [Article in Russian]. *Biofizika.* 2011; 56:1125–1133.
100. National Cancer Institute D, Surveillance Research Program, Surveillance Systems Branch, Rockville, MD. SEER Program:(2012) SEER\*Stat database: Incidence.
101. McDonald SA, Preston SL, Lovell MJ, Wright NA, Jankowski JA. Mechanisms of disease: from stem cells to colorectal cancer. *Nat Clin Pract Gastroenterol Hepatol.* 2006; 3:267–274.
102. Morikawa T, Kuchiba A, Yamauchi M, Meyerhardt JA, Shima K, Nosho K, Chan AT, Giovannucci E, Fuchs CS, Ogino S. Association of CTNNB1 (beta-catenin) alterations, body mass index, and physical activity with survival in patients with colorectal cancer. *JAMA.* 2011; 305:1685–1694.
103. Holick CN, Newcomb PA, Trentham-Dietz A, Titus-Ernstoff L, Bersch AJ, Stampfer MJ, Baron JA, Egan KM,

- Willett WC. Physical activity and survival after diagnosis of invasive breast cancer. *Cancer Epidemiol Biomarkers Prev.* 2008; 17:379–386.
104. Liu G, Chen Y, Qi F, Jia L, Lu XA, He T, Fu Y, Li L, Luo Y. Specific chemotherapeutic agents induce metastatic behaviour through stromal- and tumour-derived cytokine and angiogenic factor signalling. *J Pathol.* 2015; 237:190–202.
105. Ota H, Beutz MA, Ito M, Abe K, Oka M, McMurtry IF. S1P(4) receptor mediates S1P-induced vasoconstriction in normotensive and hypertensive rat lungs. *Pulm Circ.* 2011; 1:399–404.
106. Yu L, Hales CA. Effect of chemokine receptor CXCR4 on hypoxia-induced pulmonary hypertension and vascular remodeling in rats. *Respir Res.* 2011; 12:21.
107. Mourad JJ, des Guetz G, Debbabi H, Levy BI. Blood pressure rise following angiogenesis inhibition by bevacizumab. A crucial role for microcirculation. *Ann Oncol.* 2008; 19:927–934.
108. Klein HG. Immunomodulatory aspects of transfusion: a once and future risk? *Anesthesiology.* 1999; 91:861–865.
109. Weinberg JA, Patel RP. Red blood cell transfusion and its effect on microvascular dysfunction in shock states. *Best Pract Res Clin Anaesthesiol.* 2016; 30:491–498.
110. Kokolus KM, Capitano ML, Lee CT, Eng JW, Waight JD, Hylander BL, Sexton S, Hong CC, Gordon CJ, Abrams SI, Repasky EA. Baseline tumor growth and immune control in laboratory mice are significantly influenced by subthermoneutral housing temperature. *Proc Natl Acad Sci U S A.* 2013; 110:20176–20181.
111. Tuominen HP, Svartling NE, Tikkanen IT, Saijonmaa O, Asko-Seljavaara S. Perioperative plasma endothelin-1 concentrations and vasoconstriction during prolonged plastic surgical procedures. *Br J Anaesth.* 1995; 74:661–666.