

BMJ Open Combination of the National Early Warning Score (NEWS) and inflammatory biomarkers for early risk stratification in emergency department patients: results of a multinational, observational study

Andreas Eckart,¹ Stephanie Isabelle Hauser,¹ Alexander Kutz,¹ Sebastian Haubitz,^{1,2} Pierre Hausfater,^{3,4} Devendra Amin,⁵ Adina Amin,⁵ Andreas Huber,⁶ Beat Mueller,^{1,7} Philipp Schuetz^{1,7}

To cite: Eckart A, Hauser SI, Kutz A, *et al.* Combination of the National Early Warning Score (NEWS) and inflammatory biomarkers for early risk stratification in emergency department patients: results of a multinational, observational study. *BMJ Open* 2019;**9**:e024636. doi:10.1136/bmjopen-2018-024636

► Prepublication history and additional material for this paper are available online. To view these files, please visit the journal online (<http://dx.doi.org/10.1136/bmjopen-2018-024636>).

AE and SIH contributed equally.

Received 14 June 2018
Revised 30 October 2018
Accepted 8 November 2018



© Author(s) (or their employer(s)) 2019. Re-use permitted under CC BY-NC. No commercial re-use. See rights and permissions. Published by BMJ.

For numbered affiliations see end of article.

Correspondence to
Andreas Eckart;
eckartan@gmail.com

ABSTRACT

Objectives The National Early Warning Score (NEWS) helps to estimate mortality risk in emergency department (ED) patients. This study aimed to investigate whether the prognostic value of the NEWS at ED admission could be further improved by adding inflammatory blood markers (ie, white cell count (WCC), procalcitonin (PCT) and midregional-proadrenomedullin (MR-proADM).

Design Secondary analysis of a multinational, observational study (TRIAGE study, March 2013–October 2014).

Setting Three tertiary care centres in France, Switzerland and the USA.

Participants A total of 1303 adult medical patients with complete NEWS data seeking ED care were included in the final analysis. NEWS was calculated retrospectively based on admission data.

Main outcome measures The primary outcome was all-cause 30-day mortality. Secondary outcome was intensive care unit (ICU) admission. We used multivariate regression analyses to investigate associations of NEWS and blood markers with outcomes and area under the receiver operating curve (AUC) as a measure of discrimination.

Results Of the 1303 included patients, 54 (4.1%) died within 30 days. The NEWS alone showed fair prognostic accuracy for all-cause 30-day mortality (AUC 0.73), with a multivariate adjusted OR of 1.26 (95% CI 1.13 to 1.40, $p < 0.001$). The AUCs for the prediction of mortality using the inflammatory markers WCC, PCT and MR-proADM were 0.64, 0.71 and 0.78, respectively. Combining NEWS with all three blood markers or only with MR-proADM clearly improved discrimination with an AUC of 0.82 ($p = 0.002$). Combining the three inflammatory markers with NEWS improved prediction of ICU admission (AUC 0.70 vs 0.65 when using NEWS alone, $p = 0.006$).

Conclusion NEWS is helpful in risk stratification of ED patients and can be further improved by the addition of inflammatory blood markers. Future studies should investigate whether risk stratification by NEWS in addition

Strengths and limitations of this study

- This is the first multinational study investigating the association of the National Early Warning Score (NEWS) and adverse outcomes at emergency department admission.
- This is the first study evaluating additional impact of inflammatory biomarkers on NEWS.
- Due to its design as a secondary analysis of an observational study, results are at best hypothesis generating.
- There is the possibility of a selection bias due to exclusion of patients with missing vital status data.

to biomarkers improve site-of-care decision in this patient population.

Trial registration number NCT01768494; Post-results.

INTRODUCTION

With increasingly overwhelmed emergency departments (EDs), it is vital that well-validated risk stratification systems are implemented to rapidly identify and efficiently respond to patients at risk since delays in treatment may result in poor outcomes.^{1 2} At the same time, risk stratification systems should ensure reliable identification of patients who may not need urgent care. Risk scores such as the pneumonia severity index for patients presenting with pneumonia³ or the Global Registry of Acute Coronary Events risk score for patients with myocardial infarction are applicable mainly to specific patient populations.⁴

Emerging data suggest that in unselected medical patients presenting to the ED, early

warning scores (EWS) (ie, track-and-trigger systems) are gaining importance for risk stratification and that their usage for this purpose may exceed that of classical triage tools such as the Manchester Triage System.^{5 6} Of the numerous EWS that have been investigated for this purpose, the National Early Warning Score (NEWS) may be the best evaluated and most widely used.⁶ It was originally developed in the UK by the Royal College of Physicians to standardise and improve detection of patients at risk for deterioration, with the routine recording of a minimum of physiological parameters.^{7 8} Multiple studies have revealed its superiority over other risk stratification tools with regard to prediction of mortality.^{6 9} Since its introduction in 2012, NEWS has been validated and widely implemented in different patient populations^{5 10–12} worldwide.^{5 11 13–16} It has also been used recently for early risk stratification in unselected ED patients and has shown promise in the prediction of mortality.⁶ The Royal College of Physicians now recommends its use in EDs in its updated NEWS 2 report issued in 2017.⁷ However, risk stratification at this early stage in patient care immediately following presentation to the ED is challenging due to lack of clinical information. Moreover, NEWS and other triage scores are based on vital signs and represent a patient's clinical state at a single time point when vital signs are frequently still unremarkable, as a consequence of which they may miss patients at risk.

The use of blood markers assessed at the time of ED presentation may add prognostic information¹⁷ and even improve the prognostic value of EWSs. Although investigations trying to improve the discriminative value of NEWS by combining different markers such as serum lactate^{16 18} or D-dimer¹⁹ with NEWS have been undertaken, their results are contradictory. This may be due to inadequate selection of blood markers. The inflammatory blood marker procalcitonin (PCT) is a marker for bacterial infections. It has been employed for stewardship of antibiotic therapy²⁰ and has been shown to improve risk assessment in different patient populations such as those with sepsis²¹ or malignant disease,²² and in patients at cardiovascular risk.²³ Adrenomedullin (ADM) is a potent vasodilator peptide hormone widely expressed by many tissues that acts both as an autocrine and paracrine mediator.^{24 25} It is released in higher quantities in infectious and inflammatory states.^{26 27} Midregional proadrenomedullin (MR-proADM) is generated during the processing of the prohormone of ADM, is stable in human plasma and may directly reflect the release of ADM.²⁸ Several studies have revealed MR-proADM to be highly predictive of adverse outcomes in specific patient populations such as those with chronic heart failure,²⁹ sepsis,²⁵ lower respiratory tract infections,^{30 31} myocardial infarction³² and urinary tract infections.³³ Moreover, MR-proADM has been shown to predict adverse outcomes in patients presenting to the ED with non-specific complaints.³⁴

The first aim of this study was to investigate the prognostic accuracy of NEWS in an unselected multinational cohort of medical patients presenting to the ED. In a

second step, we aimed to investigate whether adding the inflammatory blood markers white cell count (WCC), PCT and MR-proADM would improve the predictive value of NEWS at the time of ED presentation.

METHODS

Study design

This is a retrospective analysis of data from a multinational, observational cohort study that enrolled patients from March 2013 to October 2014 at three tertiary care hospitals in Aarau (Switzerland), Paris (France) and Clearwater (Florida, USA) with the aim of determining whether the addition of biomarkers from distinct biological pathways would improve early risk stratification and initial triage of patients on ED admission. The study protocol and details regarding the study design have been published previously.^{35 36}

Patient and public involvement

Patients were not involved in the development of the research question or the design of the study.

Patient samples

All adult medical patients seeking ED care at one of the participating hospitals were consecutively enrolled. They were included in this analysis if an initial blood draw had been performed as part of the routine assessment in the ED. Surgical and paediatric patients were excluded. There were no further exclusion criteria so as to reflect patient diversity and challenges of 'real-life'.

Data collection and score assignment

At time of admission to the ED, all patients were assessed by a triage nurse and assigned an initial triage priority based on the routine hospital algorithm. All participants provided a thorough medical history and underwent a physical examination, including measurement of vital signs and laboratory assessment with collection of leftover blood samples for later analysis. Additionally, we recorded the main presenting clinical symptoms and complaints, sociodemographic characteristics and comorbidities. All information was initially entered in a case report form and subsequently stored in a centralised, password-secured databank (SecuTrial; interActive Systems GmbH, Berlin, Germany).

Throughout the hospital stay, the patients were managed by physicians, nurses and social workers independent of the research team. All patients were contacted by telephone interview 30 days after admission using a predefined questionnaire to assess vital and functional status, unplanned hospital readmission and other clinical outcomes.

The NEWS was calculated retrospectively based on available admission data pertaining to the following six parameters: respiratory rate, oxygen saturation, temperature, blood pressure, pulse rate and level of consciousness. Corresponding to the NEWS 2 score chart of the

Table 1 Baseline characteristics in the total cohort and stratified by admission NEWS category

	Total cohort	NEWS category			P value
		Low	Moderate	High	
Number of patients, n (%)	1303	966 (74.1)	262 (20.1)	75 (5.8)	
Sociodemographics					
Age, median (quartiles)	66 (52, 80)	63 (50, 79)	72 (58, 84)	69 (58, 81)	<0.001
Male gender, n (%)	658 (50.5)	498 (51.6)	122 (46.6)	38 (50.7)	0.36
Vital signs, median (quartiles)					
Blood pressure diastolic (mm Hg)	78 (67, 89)	79 (69, 89)	76 (65, 90)	72 (60, 88)	0.015
Blood pressure systolic (mm Hg)	139 (121, 159)	140 (124, 159)	137 (117, 160)	126 (91, 151)	<0.001
Confusion, n (%)	44 (3.4)	0 (0.0)	32 (12.2)	12 (16.0)	<0.001
Pulse (bpm)	83 (71, 98)	81 (70, 94)	88 (71, 107)	110 (95, 123)	<0.001
Respiratory rate (per min)	18 (18, 20)	18 (17, 20)	20 (18, 28)	26 (22, 30)	<0.001
SpO ₂ (%)	97 (95, 99)	98 (96, 99)	96 (93, 98)	91 (88, 95)	<0.001
Temperature (°C)	36.6 (36.2, 36.9)	36.6 (36.2, 36.9)	36.6 (36.2, 37.0)	36.7 (36.0, 37.7)	0.003
Initial blood biomarkers, median (quartiles)					
Creatinine (µmol/L)	79.6 (70.7, 106.1)	79.6 (70.7, 97.2)	79.6 (68.0, 107.0)	88.4 (68.0, 140.0)	0.068
Glucose (mmol/L)	6.3 (5.3, 8.1)	6.2 (5.2, 7.7)	6.5 (5.3, 8.3)	8.2 (5.8, 12.7)	<0.001
White blood cells (g/L)	8.2 (6.3, 10.8)	7.9 (6.1, 10.4)	9.0 (6.8, 13.0)	10.9 (7.5, 15.6)	<0.001
PCT (µg/L)	0.08 (0.06, 0.14)	0.08 (0.06, 0.13)	0.09 (0.06, 0.17)	0.12 (0.07, 0.31)	<0.001
MR-proADM (nmol/L)	0.9 (0.6, 1.5)	0.8 (0.6, 1.3)	1.2 (0.7, 1.8)	1.6 (1.1, 2.8)	<0.001
Main symptom at ED admission, n (%)					
Diarrhoea, vomitus, dysuria	106 (8.1)	90 (9.3)	12 (4.6)	4 (5.3)	<0.001
Fever	23 (1.8)	14 (1.4)	8 (3.1)	1 (1.3)	
Gastrointestinal bleeding	31 (2.4)	27 (2.8)	4 (1.5)	0 (0.0)	
Neurological symptoms	90 (6.9)	71 (7.3)	17 (6.5)	2 (2.7)	
Non-thoracic pain	124 (9.5)	112 (11.6)	11 (4.2)	1 (1.3)	
Respiratory symptoms	356 (27.3)	211 (21.8)	103 (39.3)	42 (56.0)	
Thoracic pain	240 (18.4)	212 (21.9)	25 (9.5)	3 (4.0)	
Miscellaneous	333 (25.6)	229 (23.7)	82 (31.3)	22 (29.3)	
Main diagnosis, n (%)					
Cancer	52 (4.0)	44 (4.6)	6 (2.3)	2 (2.7)	<0.001
Cardiovascular	486 (37.3)	386 (40.0)	83 (31.7)	17 (22.7)	
Gastrointestinal	160 (12.3)	137 (14.2)	17 (6.5)	6 (8.0)	
Infection	190 (14.6)	102 (10.6)	57 (21.8)	31 (41.3)	
Metabolic	49 (3.8)	33 (3.4)	15 (5.7)	1 (1.3)	
Neurological	176 (13.5)	140 (14.5)	33 (12.6)	3 (4.0)	
Pulmonary	110 (8.4)	60 (6.2)	37 (14.1)	13 (17.3)	
Miscellaneous	80 (6.1)	64 (6.6)	14 (5.3)	2 (2.7)	
Comorbidities, n (%)					
Cancer	123 (9.4)	73 (7.6)	37 (14.1)	13 (17.3)	<0.001
Chronic renal disease	96 (7.4)	55 (5.7)	26 (9.9)	15 (20.0)	<0.001
Congestive heart failure	154 (11.8)	88 (9.1)	46 (17.6)	20 (26.7)	<0.001
COPD	94 (7.2)	46 (4.8)	36 (13.7)	12 (16.0)	<0.001
Coronary heart disease	164 (12.6)	110 (11.4)	43 (16.4)	11 (14.7)	0.080
Diabetes	269 (20.6)	187 (19.4)	64 (24.4)	18 (24.0)	0.15

Continued

Table 1 Continued

	Total cohort	NEWS category			P value
		Low	Moderate	High	
History of stroke	22 (1.7)	12 (1.2)	7 (2.7)	3 (4.0)	0.078
Hypertension	568 (43.6)	432 (44.7)	108 (41.2)	28 (37.3)	0.32

NEWS was calculated without oxygen supplementation data and thus represents 'NEWS - potentially minus 2'.

To assess group differences, we used Kruskal-Wallis test for continuous, skew variables and Pearson's χ^2 test for categorical and binary variables.

COPD, chronic obstructive pulmonary disease; ED, emergency department; MR-proADM, midregional proadrenomedullin; NEWS, National Early Warning Score; PCT, procalcitonin; SpO₂, peripheral oxygen saturation (%).

Royal College of Physicians of the UK,⁷ continuous variables were awarded a range of 0–3 points, while the level of consciousness was binary coded with 0 points if absent and 3 points if altered. Since data on whether supplemental oxygen was given were not available, the additional 2 points that would have been assigned if supplemental oxygen was given were not included in the calculation. Using the resulting aggregate score, patients were classified into three NEWS categories representing low (0–4 points), moderate (5–6 points), or high (≥ 7 points) risk. Additionally, patients in the low-risk group scoring 3 points for a single physiological parameter were reclassified in the moderate risk group, as recommended by the Royal College of Physicians.⁷ As data on supplemental oxygen was not available, results in this paper correspond to a NEWS—potentially minus 2 points.

Study endpoints, overall hypothesis and research aim

The primary endpoint of this analysis was all-cause mortality within 30 days of ED admission. The secondary endpoint was admission to the intensive care unit (ICU) during hospital stay. The decision regarding ICU admission was left to the discretion of the treating physicians. To assess the endpoints, patients were followed throughout their hospital stay, and phone interviews were conducted 30 days after admission. If the patient could not be reached, the patient's family or general practitioner was contacted. The aim of this secondary analysis was to investigate the association of a single calculation of NEWS at time of admission with the respective outcomes. In a second step, we aimed to assess whether the predictive value of NEWS could be improved by combining these prognostic biomarkers with the NEWS.

Blood draws and biomarkers

We decided to investigate associations of three inflammatory biomarkers namely WCC, MR-proADM and PCT. The WCC was part of the routine laboratory measurement at ED admission. Based on the normal range of WCC (4.0–10.0 g/L), we defined the following cut-offs: < 4.0 g/L: representing levels lower than normal, 4.0–10.0 g/L: representing the normal range, 10.01–15.0 g/L: representing low-to-moderate inflammatory response and > 15.0 g/L: representing marked inflammation. Both PCT and MR-proADM were batch-measured later from leftover blood samples. The samples were routinely

collected at admission, immediately centrifuged, aliquoted and frozen at -20°C . The results of these analyses were not available at time of hospitalisation. Thus, physicians and patients were blinded to their results. The PCT levels were measured with a highly sensitive time-resolved amplified cryptate emission technology assay (PCT Kryptor, B.R.A.H.M.S. AG, Hennigsdorf, Germany) with a lower detection limit of $0.02 \mu\text{g/L}$ and assay sensitivity of $0.06 \mu\text{g/L}$.³⁷ The MR-proADM levels were measured in plasma with a sandwich immunoassay as described elsewhere.²⁸ The assay has an analytical detection limit of 0.08 nmol/L . We defined cut-offs of PCT and MR-proADM corresponding to quartiles.

Statistical analyses

For statistical analyses, we used STATA V.12.1. Two-tailed tests were used, and p values of < 0.05 were considered significant. We used descriptive statistics such as median with quartiles, and frequencies to describe the population, as appropriate. To assess group differences, we used Kruskal-Wallis test for continuous, skew variables, and Pearson's χ^2 test for categorical and binary variables. We performed logistic regression analyses to investigate associations of NEWS and biomarkers with primary and secondary outcomes, respectively. We developed different models with stepwise adjustment for potential important confounders (ie, age, gender, main diagnoses leading to ED admission and comorbidities). Age was used as a linear covariate. According to the main admission diagnosis, the following diagnostic groups were generated: infectious disease, cardiovascular disease, metabolic disorder, malignant disease, neurological disease, gastrointestinal disease, pulmonary disease and other disease. Comorbidities were assigned using patients' medical history and International Statistical Classification of Diseases and Related Health Problems (ICD-10) diagnostic codes and include chronic obstructive lung disease, heart failure, coronary heart disease, diabetes, hypertension, stroke, malignant disease and renal failure. In statistical models, comorbidities were coded as binary variables. Results of the regression analyses are presented as ORs with 95% CIs. The raw distribution of the biomarker data was skewed. After log transformation with a base of 10,

Table 2 Regression analyses for associations of NEWS and blood markers with primary and secondary outcomes

	ICU admission					
	30-day mortality			Events, n (%)		
	Regression analyses, OR (95% CI), P value		Events, n (%)	Regression analyses, OR (95% CI), P value		Events, n (%)
	Unadjusted	Fully adjusted		Unadjusted	Fully adjusted	
Total cohort	54/1303 (4.1)		171/1303 (13.1)			
NEWS						
Low	25/966 (2.6)	Ref.	89/966 (9.2)	Ref.	Ref.	Ref.
Moderate	16/262 (6.1)	2.45 (1.29 to 4.66), p=0.006	1.71 (0.87 to 3.37), p=0.123	57/262 (21.8)	2.74 (1.90 to 3.95), p<0.001	2.71 (1.85 to 3.98), p<0.001
High	13/75 (17.3)	7.89 (3.85 to 16.18), p<0.001	4.89 (2.22 to 10.75), p<0.001	25/75 (33.3)	4.93 (2.91 to 8.35), p<0.001	4.33 (2.48 to 7.57), p<0.001
Continuous		1.35 (1.23 to 1.48), p<0.001	1.26 (1.13 to 1.40), p<0.001		1.25 (1.17 to 1.33), p<0.001	1.24 (1.15 to 1.32), p<0.001
WCC (g/L)						
4.0–10.0	27/829 (3.3)	Ref.	84/829 (10.1)	Ref.	Ref.	Ref.
10.01–15.0	10/299 (3.3)	1.03 (0.49 to 2.15), p=0.942	1.07 (0.50 to 2.31), p=0.855	41/299 (13.7)	1.41 (0.95 to 2.10), p=0.092	1.52 (1.01 to 2.29), p=0.045
>15.0	15/111 (13.5)	4.64 (2.39 to 9.03), p<0.001	3.73 (1.80 to 7.75), p<0.001	27/111 (24.3)	2.85 (1.75 to 4.65), p<0.001	2.78 (1.67 to 4.62), p<0.001
<4.0	2/46 (4.4)	1.35 (0.31 to 5.86), p=0.689	1.05 (0.22 to 4.99), p=0.951	15/46 (32.6)	4.29 (2.23 to 8.27), p<0.001	4.42 (2.21 to 8.84), p<0.001
Continuous		1.02 (1.00 to 1.03), p=0.051	1.02 (1.00 to 1.03), p=0.036		1.01 (0.99 to 1.02), p=0.355	1.01 (0.99 to 1.02), p=0.267
PCT						
1st quartile	5/321 (1.6)	Ref.	27/321 (8.4)	Ref.	Ref.	Ref.
2nd quartile	7/321 (2.2)	1.41 (0.44 to 4.49), p=0.562	1.24 (0.38 to 4.09), p=0.722	34/321 (10.6)	1.29 (0.76 to 2.19), p=0.347	1.23 (0.72 to 2.11), p=0.449
3rd quartile	10/321 (3.1)	2.03 (0.69 to 6.01), p=0.200	1.79 (0.59 to 5.45), p=0.306	36/321 (11.2)	1.38 (0.81 to 2.32), p=0.234	1.35 (0.79 to 2.29), p=0.276
4th quartile	32/322 (9.9)	6.97 (2.68 to 18.14), p<0.001	5.17 (1.88 to 14.18), p=0.001	73/322 (22.7)	3.19 (1.99 to 5.12), p<0.001	2.78 (1.68 to 4.59), p<0.001
Continuous		2.66 (1.81 to 3.92), p<0.001	2.45 (1.54 to 3.89), p<0.001		2.33 (1.76 to 3.08), p<0.001	2.18 (1.61 to 2.96), p<0.001
MR-proADM						
1st quartile	1/324 (0.3)	Ref.	20/324 (6.2)	Ref.	Ref.	Ref.
2nd quartile	6/325 (1.9)	6.08 (0.73 to 50.75), p=0.096	4.93 (0.57 to 42.58), p=0.147	36/325 (11.1)	1.89 (1.07 to 3.35), p=0.028	2.26 (1.24 to 4.13), p=0.008

Continued

Table 2 Continued

	ICU admission							
	30-day mortality			ICU admission				
	Events, n (%)	Regression analyses, OR (95% CI), P value	Events, n (%)	Regression analyses, OR (95% CI), P value	Events, n (%)	Regression analyses, OR (95% CI), P value		
	Unadjusted	Fully adjusted		Unadjusted	Fully adjusted		Unadjusted	Fully adjusted
3rd quartile	12/323 (3.7)	12.46 (1.61 to 96.42), p=0.016	7.93 (0.96 to 65.37), p=0.054	34/323 (10.5)	1.79 (1.01 to 3.18), p=0.048	2.25 (1.19 to 4.27), p=0.013		
4th quartile	35/326 (10.7)	38.85 (5.29 to 285.36), p<0.001	17.18 (2.15 to 137.36), p=0.007	81/326 (24.9)	5.03 (3.00 to 8.43), p<0.001	6.27 (3.36 to 11.68), p<0.001		
Continuous		17.58 (8.05 to 38.38), p<0.001	10.33 (3.77 to 28.34), p<0.001		7.65 (4.59 to 12.75), p<0.001	9.20 (4.83 to 17.51), p<0.001		

Fully adjusted model adjusted for age, sex, main diagnosis and comorbidities.

For regression analysis with continuous values, PCT and proADM were log transformed with a base of 10 before entering into statistical models. Therefore, the ORs correspond to a 10-fold increase in PCT and MIR-proADM values.

NEWS was calculated without oxygen supplementation data and thus represents 'NEWS - potentially minus 2'.

ICU, intensive care unit; MIR-proADM, midregional proadrenomedullin; NEWS, National Early Warning Score; PCT, procalcitonin; WCC, white cell count.

the distribution of the biomarker data approximated a normal distribution. Therefore, ORs correspond to a 10-fold increase in log-transformed values. Regression analyses were repeated in predefined subgroups stratified by diagnoses leading to ED admission. Discriminative performance was determined by means of area under the receiver operating characteristics (AUC), where AUC 0.6–0.7 is considered poor, 0.7–0.8 fair, 0.8–0.9 good, and >0.9 excellent. The AUCs were systematically calculated for univariate models including NEWS and/or inflammatory markers and not for models adjusted for the aforementioned confounders. We used Pearson's χ^2 test to compare AUCs. For further illustration, we generated Kaplan-Meier survival plots by NEWS category and for each of the three biomarkers stratified by quartiles.

RESULTS

Patient population

Of a total of 7132 patients presenting to the EDs of the participating hospitals (1000 Clearwater, 1553 Paris and 4579 Aarau), 1303 (940 Clearwater, 355 Paris and 8 Aarau) patients had complete information for calculation of NEWS (excluding data on supplemental oxygen) and were included in the final analysis. A comparison of the total cohort and the cohort selected for this analysis can be found in the online supplementary materials table A1. The median age of included patients was 66 years and 50.5% were male. The most frequent main complaints were respiratory symptoms (27.3%), thoracic pain (18.4%) and non-thoracic pain (9.5%). The most prevalent diagnoses at ED admission were cardiovascular disease (37.3%), infections (14.6%), neurological disease (13.5%) and gastrointestinal disease (12.3%). Patients had a high burden of comorbidities including hypertension (43.6%), diabetes (20.6%), coronary heart disease (12.6%) and congestive heart failure (11.8%). Additional baseline characteristics of the general population and stratified by NEWS categories are listed in table 1.

NEWS and mortality

The 30-day mortality rate following admission to the ED was 4.1%. In unadjusted logistic regression analyses, we found a significant association between 30-day mortality and NEWS overall (OR 1.35, 95% CI 1.23 to 1.48, p<0.001) and stratified into risk groups with corresponding ORs of 2.45 (95% CI 1.29 to 4.66, p=0.006) for the moderate risk NEWS category and 7.89 (95% CI 3.85 to 16.18, p<0.001) for the high risk NEWS category, respectively, compared with the low risk NEWS category. These associations remained robust after stepwise adjustment for confounders (see table 2 for univariate and fully adjusted ORs. Data on all of the remaining models are presented in the online supplementary materials table A2). Receiver

Table 3 Discriminative performance of NEWS and biomarkers for the prediction of primary and secondary outcomes

	AUROC (95% CI)		P value	
	30-day mortality		ICU admission	
NEWS	0.73 (0.66 to 0.80)		0.65 (0.61 to 0.70)	
WCC	0.64 (0.56 to 0.72)		0.54 (0.49 to 0.59)	
PCT	0.71 (0.64 to 0.79)		0.62 (0.57 to 0.67)	
ProADM	0.78 (0.73 to 0.84)		0.67 (0.62 to 0.72)	
All combined	0.82 (0.77 to 0.88)	0.002	0.70 (0.65 to 0.75)	0.006
NEWS and WCC	0.74 (0.67 to 0.81)	0.196	0.65 (0.60 to 0.70)	0.792
NEWS and PCT	0.78 (0.72 to 0.84)	0.004	0.68 (0.64 to 0.73)	0.017
NEWS and proADM	0.82 (0.77 to 0.87)	0.002	0.70 (0.65 to 0.74)	0.009

NEWS was calculated without oxygen supplementation data and thus represents 'NEWS - potentially minus 2'.

P values correspond to the AUROCs of the respective models compared with the AUROC of NEWS alone and were assessed using Pearson's χ^2 test.

AUROC, area under the receiver operating curve; ICU, intensive care unit; MR-proADM, midregional proadrenomedullin; NEWS, National Early Warning Score; PCT, procalcitonin; WCC, white cell count.

operating statistics showed fair discriminative performance with regard to 30-day all-cause mortality, with an AUC of 0.73 (95% CI 0.66 to 0.80).

Incremental impact of inflammatory blood markers on prediction of mortality

The inflammatory blood markers WCC, PCT and MR-proADM showed low to fair prognostic accuracy for prediction of 30 day mortality with AUCs of 0.64 (95% CI 0.56 to 0.72), 0.71 (95% CI 0.64 to 0.79) and 0.78 (95% CI 0.73 to 0.84), respectively. Corresponding regression analyses for continuous values and stratified by cut-offs are shown in [table 2](#). Adding all three markers to NEWS significantly improved the predictive value to an AUC of 0.82 (95% CI 0.77 to 0.88, $p=0.002$). Interestingly, adding only MR-proADM to a model with NEWS showed a similar AUC of 0.82 (95% CI 0.77 to 0.87, $p=0.002$) for prediction of mortality ([table 3](#), [figure 1](#)). We further calculated Kaplan-Meier survival estimates ([figure 2](#)).

NEWS and ICU admission

During their hospital stay, 13.1% of patients were admitted to the ICU. Similar to findings with the primary endpoint, unadjusted regression analyses showed significant associations of NEWS with ICU admission (OR 1.25, 95% CI 1.17 to 1.33, $p<0.001$). Stratification of NEWS by risk categories showed respective ORs of 2.74 (95% CI 1.90 to 3.95, $p<0.001$) for the moderate risk category and 4.93 (95% CI 2.91 to 8.35, $p<0.001$) for the high risk category, compared with the low risk category. As before, the results stayed robust after adjusting for important confounders (see [table 2](#) for univariate and fully adjusted ORs. All of the remaining models are presented in the online supplementary materials [table A3](#)).

When receiver operating statistics were determined, NEWS showed low discriminative performance with regard to ICU admission (AUC 0.65, 95% CI 0.61 to 0.70).

Incremental impact of inflammatory blood markers on prediction of ICU admission

The predictive value of the blood markers WCC (AUC 0.54, 95% CI 0.49 to 0.59), PCT (AUC 0.62, 95% CI 0.57 to 0.67) and MR-proADM (AUC 0.67, 95% CI 0.62 to 0.72) for ICU admission was low, with only MR-proADM showing slightly better prognostic accuracy than NEWS. For univariate and multivariate regression analyses for associations of blood markers with ICU admission, see [table 2](#). A combined model of NEWS with all three blood markers again improved discriminative performance (AUC 0.70, 95% CI 0.65 to 0.75, $p=0.006$). Similar to the association with mortality, a model including only NEWS and MR-proADM showed equal results for prediction of ICU admission (AUC 0.70, 95% CI 0.65 to 0.74, $p=0.009$) ([table 3](#), [figure 1](#)).

Subgroup analyses

Analyses of subgroups showed similar association of NEWS with 30-day mortality among different diagnoses leading to ED admission (online supplementary materials [figure A1](#)).

DISCUSSION

This multinational study of heterogenous medical ED patients found a fair performance of the NEWS for prediction of 30-day mortality when calculated at a single time point at ED admission. Results remained robust after adjustment for potential confounders and among different subgroups. Additionally, we found that the predictive value of NEWS was improved by adding inflammatory blood markers, in particular MR-proADM. We also found the discriminative value of NEWS for prediction of our secondary outcome, ICU admission, was less strong but was also improved by adding PCT and MR-proADM to the model.

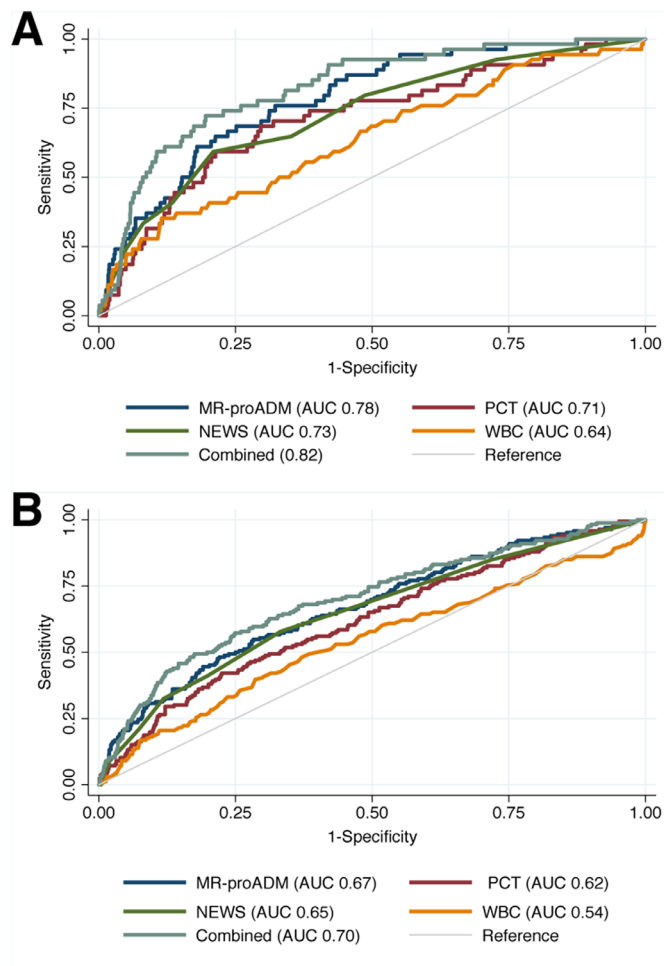


Figure 1 Discriminative performance of NEWS, blood markers and combination of NEWS and blood markers for the prediction of all-cause 30-day mortality (A) and ICU admission (B). NEWS was calculated without oxygen supplementation data and thus represents 'NEWS - potentially minus 2'. NEWS, National Early Warning Score; MR-proADM, midregional proadrenomedullin; PCT, procalcitonin; WCC, white cell count.

The 30-day mortality in our study (4.1%) was in line with the 4.0%–5.7% reported in other investigations that included similar patient populations and examined similar outcome measures.^{19 38} Prevalence of ICU admission during hospital stay in our study (13.1%) was within ICU admission rates in several other studies that reported a range between 1% and 17.4%.^{5 10 13 16 38 39} This wide range may be a reflection of different healthcare systems studied and particularly of different follow-up periods, as the different investigations examined short-term outcomes within 24 or 48 hours of admission, respectively. In this respect, our results are most notably consistent with the findings of several Scandinavian studies.^{5 13 15}

Regarding predictive performance, other studies investigating discriminative power of NEWS documented at the time of ED arrival found similar AUCs for prediction of in-hospital mortality or 30-day mortality, with reported AUCs of 0.65–0.77 in patients with suspected infection/

sepsis^{40–42} and AUCs of 0.77 to 0.84 in general ED patients, respectively.^{16 38}

Predictive performance for ICU admission in our study (AUC 0.65, 95% CI 0.61 to 0.70) was slightly lower than the AUCs in other publications that report AUCs of 0.67–0.857 for prediction of ICU admission in different patient populations.^{9 16 41 43}

Our finding of MR-proADM as a solitary predictor of 30-day mortality (AUC 0.78, 95% CI 0.73 to 0.84) is in line with the result of another Swiss study reporting an AUC of 0.732 for the same purpose in a cohort of patients with non-specific complaints presenting to the ED.³⁴

To the best of our knowledge, this is the first study investigating NEWS in a multinational cohort of medical ED patients. Moreover, this is the first study investigating the potential additional impact of promising inflammatory markers, namely PCT and MR-proADM, on NEWS for the prediction of adverse outcome.

One could argue that adding blood markers to a clinical score might complicate its calculation, but in EDs, initial blood draws are part of routine care, which is why the additional determination of inflammatory marker levels do not change existing processes. In contrast, WCC results are available rapidly, and indeed PCT point-of-care tests that provide results within minutes are being developed.⁴⁴ Measurements of additional blood markers thus might partially overcome user-dependency of EWSs and might therefore improve early risk stratification. Our study reveals that MR-proADM could be a particularly suitable and promising blood marker for early risk stratification when combined with a clinical score such as NEWS. As a result, identification of patients needing urgent care could be improved. However, right now, there is no point-of-care test available that would allow rapid measurement of MR-proADM. Clinicians would likely evaluate results from biomarker assays in the light of the patient's condition at the time the test results become available, not at time the blood sample was drawn. As ED patients are in a dynamic situation, NEWS and the patient's condition might have changed already when results become available.

This study has some limitations. First, since it is a study where NEWS was calculated retrospectively, associations between NEWS and biomarkers and outcomes are likely confounded. We addressed this limitation at least partially by adjusting for important confounders. However, with residual confounding being likely, our results are at best hypothesis generating. Second, NEWS was calculated retrospectively, and vital signs were not measured more frequently than standard clinical practice. However, we addressed possible bias regarding a treatment paradox since observed mortality may be lower in studies where NEWS is acted on. Third, due to missing vital sign data—particularly respiratory rate—a large number of patients were not eligible for final analysis. This is in line with other studies reporting that EWS were often incomplete⁴⁵ and that among others, respiratory rate was documented in only 30%–60% of cases.^{45 46}

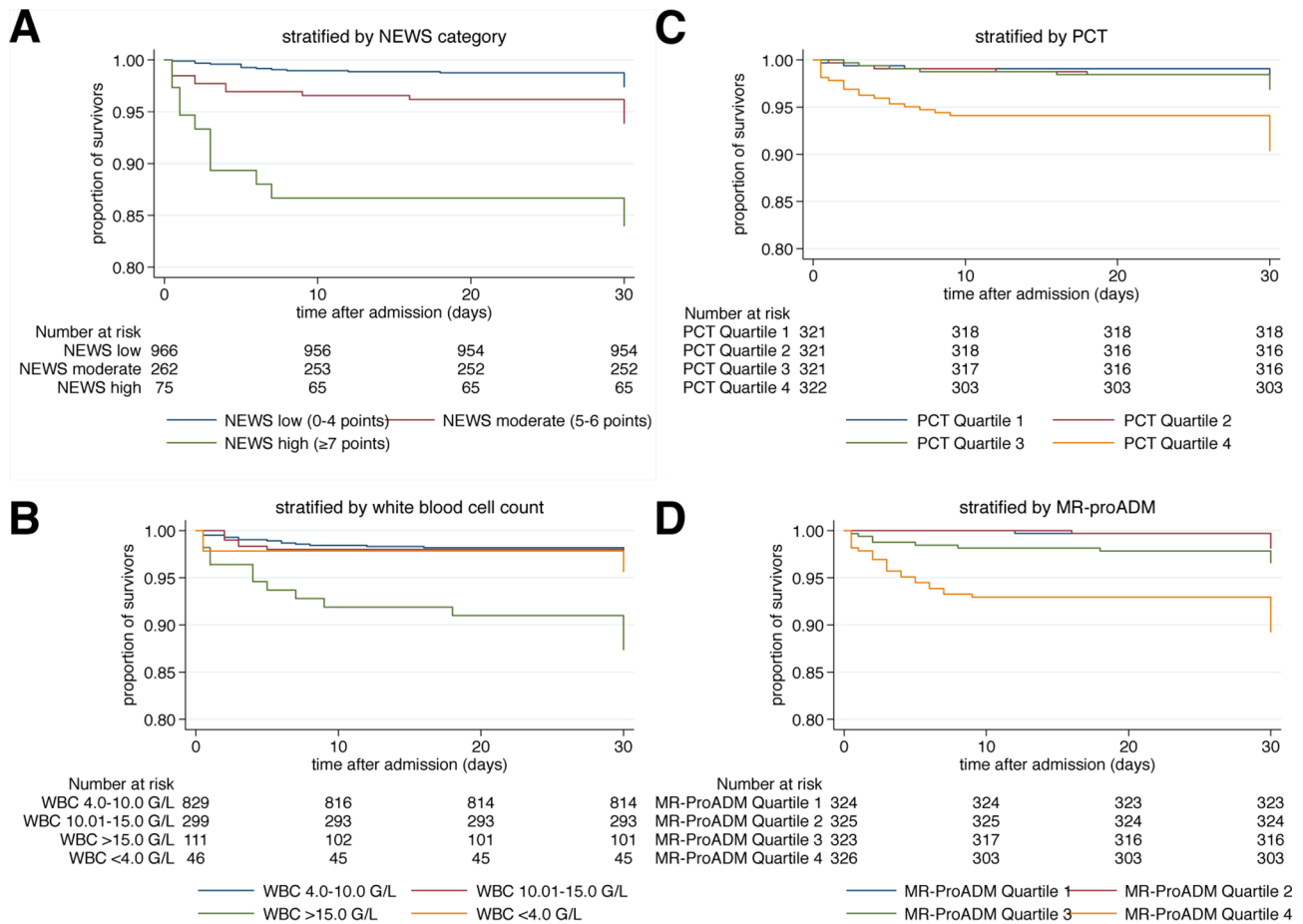


Figure 2 Kaplan-Meier survival estimates stratified by admission NEWS category (A), white cell count (WCC) (B), procalcitonin (PCT) (C), and MR-proadrenomedullin (MR-proADM) (D). NEWS was calculated without oxygen supplementation data and thus represents ‘NEWS - potentially minus 2’.

However, our sample is still relatively large and represents a multinational cohort of unselected medical ED patients. Moreover, given that health system organisation strongly influences populations at EDs, the multinational nature of our study provides external validity. However, there is the possibility of a selection bias as the cohort included in this analysis differed to the initial total cohort in age, some of the main symptoms and main diagnoses at ED admission and comorbidities. This was addressed in the regression models by adjusting for the aforementioned confounders. The results remained robust. Fourth, information on the use of oxygen support was not available retrospectively and therefore did not contribute to NEWS calculation, which reduced the maximum score from 20 to 18. This might have led to misclassification of patients and might have diminished the discriminatory power of NEWS. It is likely that the fraction of patients that were under-rated by 2 points due to missing information on oxygen supplements would increase from the low via the moderate to the high-risk NEWS group. This could represent a systematic bias where sicker patients (probably with worse outcomes) would potentially be misclassified with fewer points in the NEWS score, possibly resulting in statistical inflation of the effect of the lower NEWS

values. However, the Royal College of Physicians recommends addition of a weighting score of 2 not by default for all patients with supplemental oxygen but only for patients requiring supplemental oxygen to maintain their optimal oxygen saturation.⁷ As the optimal oxygen saturation may be different in varying patient groups, most notably in patients with hypercapnic respiratory failure, the actual requirement of supplemental oxygen is hard to determine and requires evaluation of a qualified and experienced physician. As a result, certain patients might mistakenly score 2 additional points for supplemental oxygen, which can again result in misclassification of the NEWS risk category. However, as mentioned before, the discriminative power of NEWS in our study is comparable with other similar investigations. Fifth, we only had a few events that could limit reliability and is reflected in the rather broad 95% CIs. This was addressed at least in part by hard endpoints and a structured follow-up with phone interviews 30 days after admission or through contacting the patient’s family or general practitioner. Sixth, the decision regarding ICU admission was left to the discretion of treating physicians. This reflects procedures followed in the included centres and may be different from those in other hospitals. Last, NEWS was not designed to be

a single time point tool but rather a ‘track-and-trigger’ system in individual patients. Accuracy of NEWS may thus be different if multiple measurements at different time points are considered.

CONCLUSION

Combining NEWS calculated on admission to the ED with markers of inflammation such as MR-proADM and PCT improves the predictive value of NEWS in unselected medical patients. The combination of NEWS and MR-proADM might prove to be a particularly promising tool for early risk stratification. Whether these theoretical benefits of improved risk stratification at ED admission can be translated into improved outcomes has to be examined in future interventional studies.

Author affiliations

¹Division of General Internal and Emergency Medicine, University Department of Medicine, Kantonsspital Aarau, Aarau, Switzerland

²Division of Infectious Diseases, University Department of Medicine, Kantonsspital Aarau, Aarau, Switzerland

³Emergency Departement, Groupe Hospitalier Pitié-Salpêtrière, Assistance Publique-Hôpitaux de Paris (APHP), Paris, France

⁴Sorbonne Universités UPMC-Univ Paris 06, UMRS INSERM 1166, IHUC ICAN, Paris, France

⁵Morton Plant Hospital, Clearwater, Florida, USA

⁶Department of Laboratory Medicine, Kantonsspital Aarau, Aarau, Switzerland

⁷Medical Faculty, University of Basel, Basel, Switzerland

Acknowledgements This multidisciplinary and interprofessional trial was only possible in close collaboration with personnel from multiple departments within the Kantonsspital Aarau, including social services (Anja Keller and Regina Schmid), nursing (Susanne Schirlo and Petra Tobias), central laboratory (Martha Kaeslin and Renate Hunziker), medical control (Juergen Froehlich, Thomas Holler and Christoph Reemts) and information technology (Roger Wohler, Kurt Amstad, Ralph Dahnke and Sabine Storost), the Clinical Trial Unit at the University Hospital of Basel (Stefan Felder and Timo Tondelli) and all participating patients, nurses and physicians. Editorial assistance was provided by Prasad Kulkarni, PhD, CMPP, of Asclepius Medical Communications LLC, Ridgewood, New Jersey, USA, and was funded by the authors.

Contributors PS had complete access to all study data and takes full responsibility for the integrity of the data and the accuracy of the analyses. BM and PS were involved in the conceptualisation and design of the study. PH, DA, AA, AH and PS were responsible for the acquisition, analysis or interpretation of the data. AE, SIH and PS performed the statistical analyses and drafted the manuscript. AK and SH reviewed the draft and revised the manuscript for important intellectual content. All authors approved the final version of the manuscript and the decision to submit the manuscript for publication. AE and SIH contributed equally to this work.

Funding ThermoFisher provided an unrestricted research grant for the TRIAGE study. PS is supported by the Swiss National Science Foundation (SNSF Professorship, PP00P3_150531/1) and the Research Council of the Kantonsspital Aarau (1410.000.044).

Competing interests AK, BM, PH and PS have received research grants and support from BRAHMS AG (now ThermoFisher Scientific Biomarkers) and bioMérieux for attending meetings and fulfilling speaking engagements. BM has served as a consultant to both companies

Patient consent for publication Not required.

Ethics approval Since it was an observational quality control study, the Institutional Review Boards (IRB) of the three hospitals approved the study and waived the need for individual informed consent (main Swiss IRB: Ethikkommission Kanton Aargau (EK 2012/059); French IRB: CCTIRS—Le Comité consultatif sur le traitement de l’information en matière de recherche (C.C.T.I.R.S.; CPP ID RCB: 2013-A00129-36); US IRB MPM-SAH Institutional Review Board, Clearwater Florida (IRB number 2013_005)).

Provenance and peer review Not commissioned; externally peer reviewed.

Data sharing statement Extra data can be accessed via the Dryad data repository at <http://datadryad.org/> with the doi:10.5061/dryad.d22q6vh.

Open access This is an open access article distributed in accordance with the Creative Commons Attribution Non Commercial (CC BY-NC 4.0) license, which permits others to distribute, remix, adapt, build upon this work non-commercially, and license their derivative works on different terms, provided the original work is properly cited, appropriate credit is given, any changes made indicated, and the use is non-commercial. See: <http://creativecommons.org/licenses/by-nc/4.0/>.

REFERENCES

- Guttman A, Schull MJ, Vermeulen MJ, *et al*. Association between waiting times and short term mortality and hospital admission after departure from emergency department: population based cohort study from Ontario, Canada. *BMJ* 2011;342:d2983.
- Sun BC, Hsia RY, Weiss RE, *et al*. Effect of emergency department crowding on outcomes of admitted patients. *Ann Emerg Med* 2013;61:605–11.
- Fine MJ, Auble TE, Yealy DM, *et al*. A prediction rule to identify low-risk patients with community-acquired pneumonia. *N Engl J Med* 1997;336:243–50.
- Fox KA, Dabbous OH, Goldberg RJ, *et al*. Prediction of risk of death and myocardial infarction in the six months after presentation with acute coronary syndrome: prospective multinational observational study (GRACE). *BMJ* 2006;333:1091.
- Bilben B, Grandal L, Søvik S. National Early Warning Score (NEWS) as an emergency department predictor of disease severity and 90-day survival in the acutely dyspneic patient - a prospective observational study. *Scand J Trauma Resusc Emerg Med* 2016;24:80.
- Nannan Panday RS, Minderhoud TC, Alam N, *et al*. Prognostic value of early warning scores in the emergency department (ED) and acute medical unit (AMU): A narrative review. *Eur J Intern Med* 2017;45:20–31.
- Royal College of Physicians (London). *National Early Warning Score (NEWS) 2: standardising the assessment of acute-illness severity in the NHS - Updated report of a working party*, 2017.
- Royal College of Physicians (London). *National Early Warning Score (NEWS) Standardising the assessment of acute illness severity in the NHS - Report of a working party*. London: Royal College of Physicians (London), 2012.
- Smith GB, Prytherch DR, Meredith P, *et al*. The ability of the National Early Warning Score (NEWS) to discriminate patients at risk of early cardiac arrest, unanticipated intensive care unit admission, and death. *Resuscitation* 2013;84:465–70.
- Kovacs C, Jarvis SW, Prytherch DR, *et al*. Comparison of the National Early Warning Score in non-elective medical and surgical patients. *Br J Surg* 2016;103:1385–93.
- Luis L, Nunes C. Short National early warning score - developing a modified early warning score. *Aust Crit Care* 2018;31:376–81.
- Abbott TEF, Cron N, Vaid N, *et al*. Pre-hospital National Early Warning Score (NEWS) is associated with in-hospital mortality and critical care unit admission: a cohort study. *Ann Med Surg* 2018;27:17–21.
- Spångfors M, Arvidsson L, Karlsson V, *et al*. The National Early Warning Score: Translation, testing and prediction in a Swedish setting. *Intensive Crit Care Nurs* 2016;37:62–7.
- Spagnoli W, Rigoni M, Torri E, *et al*. Application of the National Early Warning Score (NEWS) as a stratification tool on admission in an Italian acute medical ward: a perspective study. *Int J Clin Pract* 2017;71(3-4):e12934.
- Tirkkonen J, Olkkola KT, Huhtala H, *et al*. Medical emergency team activation: performance of conventional dichotomised criteria versus national early warning score. *Acta Anaesthesiol Scand* 2014;58:411–9.
- Jo S, Yoon J, Lee JB, *et al*. Predictive value of the National Early Warning Score-Lactate for mortality and the need for critical care among general emergency department patients. *J Crit Care* 2016;36:60–8.
- Schuetz P, Aujesky D, Müller C, *et al*. Biomarker-guided personalised emergency medicine for all - hope for another hype? *Swiss Med Wkly* 2015;145:w14079.
- Abbott TEF, Torrance HDT, Cron N, *et al*. A single-centre cohort study of National Early Warning Score (NEWS) and near patient testing in acute medical admissions. *Eur J Intern Med* 2016;35:78–82.
- Nickel CH, Kellett J, Cooksley T, *et al*. Combined use of the National Early Warning Score and D-dimer levels to predict 30-day and 365-day mortality in medical patients. *Resuscitation* 2016;106:49–52.

20. Schuetz P, Wirz Y, Sager R, *et al.* Effect of procalcitonin-guided antibiotic treatment on mortality in acute respiratory infections: a patient level meta-analysis. *Lancet Infect Dis* 2018;18:95–107.
21. Hicks CW, Engineer RS, Benoit JL, *et al.* Procalcitonin as a biomarker for early sepsis in the emergency department. *Eur J Emerg Med* 2014;21:112–7.
22. Rast AC, Kutz A, Felder S, *et al.* Procalcitonin improves the Glasgow Prognostic Score for outcome prediction in emergency patients with cancer: a cohort study. *Dis Markers* 2015;2015:1–9.
23. Schioppa A, Hedblad B, Engström G, *et al.* Plasma procalcitonin and the risk of cardiovascular events and death: a prospective population-based study. *J Intern Med* 2012;272:484–91.
24. Jougasaki M, Burnett JC. Adrenomedullin: potential in physiology and pathophysiology. *Life Sci* 2000;66:855–72.
25. Valenzuela-Sánchez F, Valenzuela-Méndez B, Rodríguez-Gutiérrez JF, *et al.* New role of biomarkers: mid-regional pro-adrenomedullin, the biomarker of organ failure. *Ann Transl Med* 2016;4:329.
26. Schuetz P, Marlowe RJ, Mueller B. The prognostic blood biomarker proadrenomedullin for outcome prediction in patients with chronic obstructive pulmonary disease (COPD): a qualitative clinical review. *Clin Chem Lab Med* 2015;53:521–39.
27. Courtais C, Kuster N, Dupuy AM, *et al.* Proadrenomedullin, a useful tool for risk stratification in high Pneumonia Severity Index score community acquired pneumonia. *Am J Emerg Med* 2013;31:215–21.
28. Morgenthaler NG, Struck J, Alonso C, *et al.* Measurement of midregional proadrenomedullin in plasma with an immunoluminometric assay. *Clin Chem* 2005;51:1823–9.
29. Pousset F, Masson F, Chavirovskaia O, *et al.* Plasma adrenomedullin, a new independent predictor of prognosis in patients with chronic heart failure. *Eur Heart J* 2000;21:1009–14.
30. Christ-Crain M, Morgenthaler NG, Stolz D, *et al.* Pro-adrenomedullin to predict severity and outcome in community-acquired pneumonia [ISRCTN04176397]. *Crit Care* 2006;10:R96.
31. Brusse-Keizer M, Zuur-Telgen M, van der Palen J, *et al.* Adrenomedullin optimises mortality prediction in COPD patients. *Respir Med* 2015;109:734–42.
32. Tzikas S, Keller T, Ojeda FM, *et al.* MR-proANP and MR-proADM for risk stratification of patients with acute chest pain. *Heart* 2013;99:388–95.
33. Litke A, Bossart R, Regez K, *et al.* The potential impact of biomarker-guided triage decisions for patients with urinary tract infections. *Infection* 2013;41:799–809.
34. Nickel CH, Messmer AS, Geigy N, *et al.* Stress markers predict mortality in patients with nonspecific complaints presenting to the emergency department and may be a useful risk stratification tool to support disposition planning. *Acad Emerg Med* 2013;20:670–9.
35. Schuetz P, Hausfater P, Amin D, *et al.* Biomarkers from distinct biological pathways improve early risk stratification in medical emergency patients: the multinational, prospective, observational TRIAGE study. *Critical Care* 2015;19:377.
36. Schuetz P, Hausfater P, Amin D, *et al.* Optimizing triage and hospitalization in adult general medical emergency patients: the triage project. *BMC Emerg Med* 2013;13:12.
37. Morgenthaler NG, Struck J, Alonso C, *et al.* Assay for the measurement of copeptin, a stable peptide derived from the precursor of vasopressin. *Clin Chem* 2006;52:112–9.
38. Alam N, Vegting IL, Houben E, *et al.* Exploring the performance of the National Early Warning Score (NEWS) in a European emergency department. *Resuscitation* 2015;90:111–5.
39. Brabrand M, Hallas P, Hansen SN, *et al.* Using scores to identify patients at risk of short term mortality at arrival to the acute medical unit: a validation study of six existing scores. *Eur J Intern Med* 2017;45:32–6.
40. Churpek MM, Snyder A, Han X, *et al.* Quick sepsis-related organ failure assessment, systemic inflammatory response syndrome, and early warning scores for detecting clinical deterioration in infected patients outside the intensive care unit. *Am J Respir Crit Care Med* 2017;195:906–11.
41. Corfield AR, Lees F, Zealley I, *et al.* Utility of a single early warning score in patients with sepsis in the emergency department. *Emerg Med J* 2014;31:482–7.
42. Hodgson LE, Dimitrov BD, Congleton J, *et al.* A validation of the National Early Warning Score to predict outcome in patients with COPD exacerbation. *Thorax* 2017;72:23–30.
43. Sbiti-Rohr D, Kutz A, Christ-Crain M, *et al.* The National Early Warning Score (NEWS) for outcome prediction in emergency department patients with community-acquired pneumonia: results from a 6-year prospective cohort study. *BMJ Open* 2016;6:e011021.
44. Kutz A, Hausfater P, Oppert M, *et al.* Comparison between B·R·A·H·M·S PCT direct, a new sensitive point-of-care testing device for rapid quantification of procalcitonin in emergency department patients and established reference methods - a prospective multinational trial. *Clin Chem Lab Med* 2016;54:577–84.
45. Downey CL, Tahir W, Randell R, *et al.* Strengths and limitations of early warning scores: a systematic review and narrative synthesis. *Int J Nurs Stud* 2017;76:106–19.
46. Ludikhuizen J, Smorenburg SM, de Rooij SE, *et al.* Identification of deteriorating patients on general wards; measurement of vital parameters and potential effectiveness of the Modified Early Warning Score. *J Crit Care* 2012;27:424.e7–424.e13.