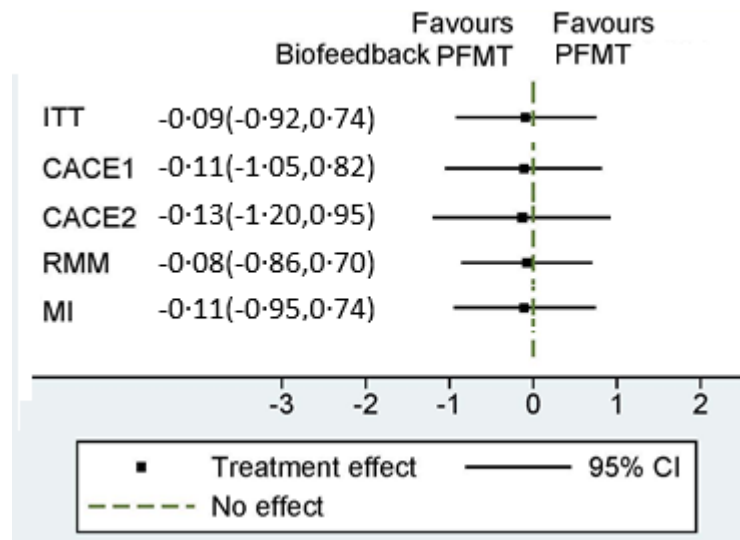


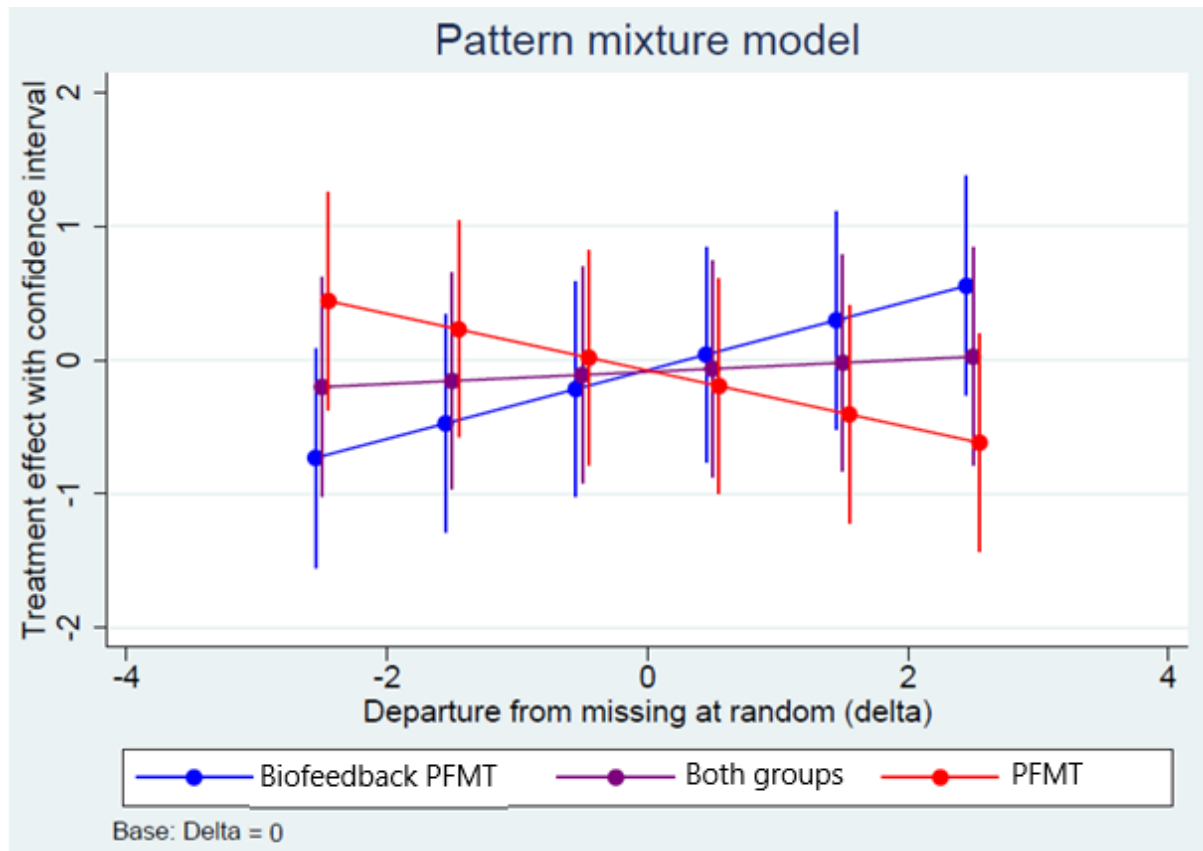
Supplementary Material

Summary results of missing data sensitivity analyses of the ICIQ-UI SF at 24 months



Intention-to-treat model (ITT), Complier Average Causal Effect models (CACE1 assumes compliance where compliance status is indeterminable, CACE2 assumes non-compliance where compliance status is indeterminable), Repeated Measures Model (RMM), Multiple Imputation model (MI)

Summary results of pattern mixture models fitted to the ICIQ-UI SF at 24 months under various assumptions of missing not at random



Summary results of responses to ICIQ-UI SF frequency question at baseline and 24 months by trial group

How often do you leak urine? [#]	Biofeedback PFMT	PFMT
	N, n, %	N, n, %
Baseline		
never	291, 2, 0.7	296, 3, 1.0
about once a week or less often	291, 36, 12.4	296, 38, 12.8
two or three times a week	291, 65, 22.3	296, 78, 26.4
about once a day	291, 55, 18.9	296, 50, 16.9
several times a day	291, 113, 38.8	296, 116, 39.2
all the time	291, 20, 6.9	296, 11, 3.7
24 months		
never	228, 21, 9.2	237, 24, 10.1
about once a week or less often	228, 69, 30.3	237, 72, 30.4
two or three times a week	228, 49, 21.5	237, 52, 21.9
about once a day	228, 36, 15.8	237, 35, 14.8
several times a day	228, 42, 18.4	237, 49, 20.7
all the time	228, 11, 4.8	237, 5, 2.1

[#] time frame is over the last four weeks

Summary results of responses to bowel symptom questions at 24 months by trial group

Bowel symptoms at 24 months	Biofeedback PFMT	PFMT
Difficulty emptying bowels?	N, n, %	N, n, %
never	161, 59, 36.6	167, 37, 22.2
occasionally	161, 64, 39.8	167, 69, 41.3
sometimes	161, 25, 15.5	167, 44, 26.3
most of the time	161, 10, 6.2	167, 12, 7.2
all of the time	161, 3, 1.9	167, 5, 3

Rush to toilet?	N, n, %	N, n, %
never	162, 71, 43.8	168, 70, 41.7
occasionally	162, 54, 33.3	168, 60, 35.7
sometimes	162, 30, 18.5	168, 26, 15.5
most of the time	162, 4, 2.5	168, 10, 6
all of the time	162, 3, 1.9	168, 2, 1.2
Stool leak?	N, n, %	N, n, %
never	162, 129, 79.6	167, 125, 74.9
occasionally	162, 24, 14.8	167, 29, 17.4
sometimes	162, 8, 4.9	167, 9, 5.4
most of the time	162, 1, 0.6	167, 4, 2.4
How often bowels open?	N, n, %	N, n, %
3 or more a day	161, 11, 6.8	168, 15, 8.9
twice a day	161, 31, 19.3	168, 36, 21.4
once a day	161, 82, 50.9	168, 68, 40.5
2/3 times a week	161, 28, 17.4	168, 41, 24.4
1 a week or less	161, 9, 5.6	168, 8, 4.8
Motions usually?	N, n, %	N, n, %
watery	159, 2, 1.3	167, 3, 1.8
sloppy	159, 13, 8.2	167, 16, 9.6
soft and formed	159, 130, 81.8	167, 118, 70.7
hard	159, 14, 8.8	167, 30, 18
Bowel symptoms interfering with everyday life? P (0 "not at all" to 10 "a great deal")	N, Mean, SD	N, Mean, SD
	134, 1.8, 2.4	144, 2.0, 2.6