

SCIENTIFIC REPORTS



OPEN

Secretory factors from OP9 stromal cells delay differentiation and increase the expansion potential of adult erythroid cells *in vitro*

Kongtana Trakarnsanga^{1,2}, Marieangela C. Wilson², Kate J. Heesom², Tatyana N. Andrienko², Chatchawan Srisawat¹ & Jan Frayne²

Development of *in vitro* culture systems for the generation of red blood cells is a goal of scientists globally with the aim of producing clinical grade products for transfusion. Although mature reticulocytes can be efficiently generated by such systems, the numbers produced fall short of that required for therapeutics, due to limited proliferative capacity of the erythroblasts. To overcome this hurdle, approaches are required to increase the expansion potential of such culture systems. The OP9 mouse stromal cell line is known to promote haematopoietic differentiation of pluripotent stem cells, however an effect of OP9 cells on erythropoiesis has not been explored. In this study, we show not only OP9 co-culture, but factors secreted by OP9 cells in isolation increase the proliferative potential of adult erythroid cells by delaying differentiation and hence maintaining self-renewing cells for an extended duration. The number of reticulocytes obtained was increased by approximately 3.5-fold, bringing it closer to that required for a therapeutic product. To identify the factors responsible, we analysed the OP9 cell secretome using comparative proteomics, identifying 18 candidate proteins. These data reveal the potential to increase erythroid cell numbers from *in vitro* culture systems without the need for genetic manipulation or co-culture.

Development of *in vitro* culture systems for the generation of red blood cells has become a goal for scientists globally with the aim of producing clinical grade blood products for transfusion. Erythroid cells can be efficiently differentiated to reticulocytes from adult peripheral blood stem cells, however, extrapolated cell numbers fall short of the level required for therapeutics, due to limited proliferation capacity¹. Strategies are therefore required to overcome this hurdle.

Macrophages are believed to facilitate erythroblast proliferation *in vivo*, with both adhesion molecules and secreted factors implicated (reviewed by Klei *et al.*²). Macrophages have also been shown to stimulate erythroid cell expansion *in vitro*, although direct contact with erythroid cells is required³. Addition of a cytoprotective polymer (poloxamer 188) to the culture medium of late stage erythroid cells has been shown to enhance survival of the cells and increase overall yield by 1.5 fold⁴. Other approaches, such as inhibition of FOXM1⁵ have also been shown to have, albeit a small positive effect on erythroid cell numbers. Hence identification of additional novel factors to increase expansion of erythroid cell numbers *in vitro* is required. Furthermore, as different factors may act on different pathways, combinatorial approaches utilising synergistic effects may enable greater expansion rates to be achieved.

The OP9 stromal cell line was established from a mouse with a M-CSF (macrophage colony stimulating factor) gene mutation resulting in lack of M-CSF production from this cell line⁶. Stromal cells producing M-CSF induce the differentiation of embryonic stem cells (ESC) down the monocyte-macrophage lineage⁶. In contrast OP9 stromal cells lacking M-CSF promote differentiation down other haematopoietic lineages (erythroid, myeloid and B- cell)^{6–11}. Likewise, OP9 cells have been used in co-culture to support erythroid differentiation of pluripotent stem cells and to improve terminal differentiation^{12,13}. In contrast adult peripheral blood stem cells undergo

¹Department of Biochemistry, Faculty of Medicine Siriraj Hospital, Mahidol University, Bangkok, Thailand. ²School of Biochemistry, Faculty of Biomedical Sciences, University of Bristol, Bristol, United Kingdom. Correspondence and requests for materials should be addressed to J.F. (email: jan.frayne@bristol.ac.uk)

efficient erythroid differentiation *in vitro* without the need for support cells¹⁴. However, an effect of OP9 cells on the proliferation of adult erythroid cells has not previously been explored.

In this study we show that factors secreted by OP9 cells increase the proliferative capacity and hence yield of adult erythroid cultures, by delaying differentiation and hence maintaining self-renewing cells for an extended duration.

Results

Co-culture with OP9 cells increases proliferation potential of adult erythroid cell culture by delaying differentiation. To study the effect of OP9 cells on the proliferation potential of erythroblasts the cells were initially incubated under co-culture conditions. Adult peripheral blood CD34⁺ haematopoietic progenitors were isolated from leukocyte-reduction system cones obtained from healthy donors. Aliquots of 10⁴ CD34⁺ cells were seeded on a layer of confluent OP9 cells, or incubated without OP9 cells (control culture). The cells were cultured using the 3-stage erythroid culture system described by Griffith *et al.*¹⁴, with additional fetal bovine serum (10% rather than 2% v/v) to support the OP9 cells (no difference was observed between expansion or differentiation of erythroid cells cultured in 2% or 10% fetal bovine serum; data not shown). Cells were sequentially transferred between the primary, secondary and tertiary media of the culture system for an overall culture duration of 22 days. Cell number and viability was assessed throughout the culture. A sample of cells was also collected on day 20 of culture for morphological analysis.

Initially, during the first 11 days of culture, there appeared to be fewer cells in the OP9 co-culture compared to the control culture. However, visualization by phase contrast microscopy showed a substantial proportion of erythroblasts attached to the OP9 cells (Fig. 1a) which were excluded from the cell count, only detached cells being counted; the total cell number obtained is therefore an underestimate. Notwithstanding, from day 11 of culture a clear distinction between the cultures was apparent, with expansion rate of the control culture showing a marked decline (average 1.1-fold increase to day 18) whereas cell numbers in the OP9 co-culture continuing to double (Fig. 1b). Overall expansion of cell numbers in the OP9 co-culture was significantly higher than in the control culture, $\sim 1.5 \times 10^4$ compared to $\sim 6 \times 10^3$ respectively ($n = 3$; $p < 0.001$). There were still erythroblasts attached to the OP9 cells at the end of the culture, although substantially fewer than at early time points (Fig. 1a). Analysis of erythroid cell morphology on day 20 showed a significantly greater proportion of orthochromatic erythroblasts in the OP9 ($57.2\% \pm 1.6\%$) compared to the control culture ($8.6\% \pm 1.7\%$; $n = 3$, $p < 0.001$), along with $7.1\% \pm 1.7\%$ polychromatic erythroblasts, whereas most cells in the control culture had already enucleated (Fig. 1c, Suppl Table 1), indicating delayed differentiation of a proportion of cells in the OP9 co-culture. To obtain morphological analysis at earlier time points the cultures were repeated. At day 14 almost 50% more pro-erythroblasts were detected in the OP9 compared to control culture. At day 18 a population of basophilic erythroblasts ($8.6\% \pm 2.8\%$) was still present in the OP9 co-culture along with $19.3\% \pm 2.6\%$ polychromatic erythroblasts, whereas all cells in the control culture had differentiated to orthochromatic erythroblasts or reticulocytes (Suppl Fig. 1; Table 1). Hence, the increased number of cells obtained in the OP9 co-cultures is due to persistence of earlier erythroblasts with proliferative potential to later stages of the culture compared to the control cultures.

There was no obvious correlation between detachment of erythroblasts from the OP9 cells and erythroid maturation, cells at all stages of differentiation detected in the detached fraction (Suppl Fig. 1). A small proportion of OP9 cells differentiated to adipocyte-like cells as has been observed previously¹⁵, however the number did not increase notably during the cultures (Fig. 1a).

Direct contact of erythroblasts with OP9 cells is not required to delay differentiation of erythroid cells.

To determine whether direct contact of erythroblasts with OP9 cells is required, OP9 cells were seeded and maintained in wells of a tissue culture plate until confluent. Aliquots of 2,500 CD34⁺ progenitors were either seeded directly onto the OP9 cells or onto a NUNC tissue culture insert within the well of a tissue culture plate, preventing direct contact between the OP9 and CD34⁺ cells. The co-cultures were performed using the 3-stage erythroid culture system as for the previous experiment. The expansion profile for erythroblasts in direct contact with OP9 cells was the same as in experiment 1 above. However, unlike the control culture, in which the expansion rate declined from day 11, the number of erythroid cells in cultures with indirect exposure to OP9 cells continued to increase, paralleling the profile of the cultures with direct contact (Fig. 2a). There was no difference in the number of cells from this time point onwards between the two groups, or in the overall expansion of cell numbers. The morphology of cells on day 20 was also similar between the groups (Fig. 2b; Suppl Table 2). Hence direct contact between the OP9 cells and erythroblasts is not required to delay differentiation of erythroblasts.

Conditioned medium from OP9 cells delays differentiation and facilitates prolonged expansion of erythroblasts.

The use of co-culture, particularly inclusion of cells of non-human origin, is both in-practical and undesirable when considering therapeutic development. Our next step was therefore to determine if conditioned media from OP9 cells was adequate to obtain the observed effects. OP9 cells were incubated in primary, secondary and tertiary media for 48 hours, the media collected and filtered to remove any contaminating cells. Aliquots of 10⁴ CD34⁺ cells were incubated in these media or in the normal 3-stage media. Cells were counted throughout the culture. The number of erythroid cells in cultures with OP9-conditioned media was significantly higher at all time points from day 9 onwards than in control cultures (Fig. 3a). Overall expansion of cell numbers in the OP9-conditioned media was also significantly higher than in the control media, $\sim 7 \times 10^4$ compared to $\sim 2 \times 10^4$ respectively ($n = 3$; $p < 0.001$). Since this experiment was performed using only liquid culture conditions the number of cells could be maintained at optimal concentrations for each stage¹⁴ which results in higher numbers of cells in the control group than in previous experiments. On day 16, cultures with OP9-conditioned media had significantly more polychromatic erythroblasts still present ($6.6\% \pm 1.2\%$) than control cultures ($1.6\% \pm 0.2\%$; $n = 3$, $p < 0.001$) (Fig. 3b,c). Coupled with the greater overall number of cells obtained

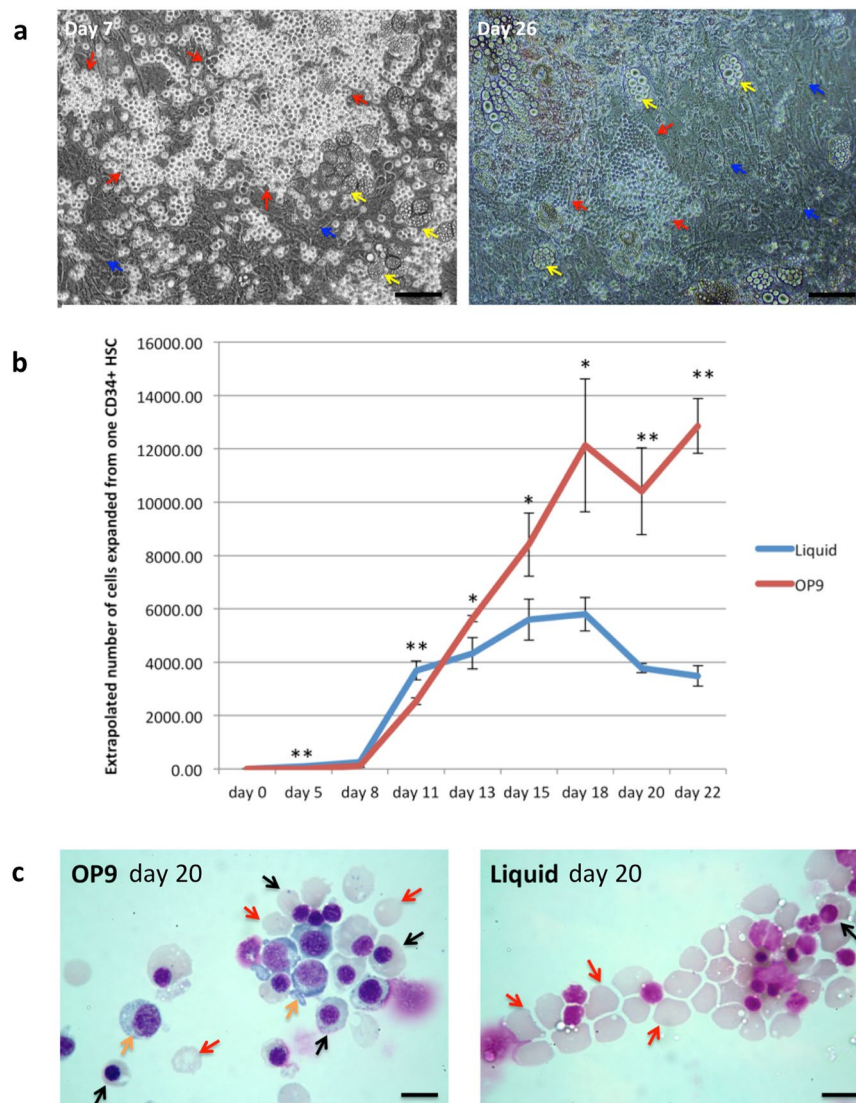


Figure 1. OP9 co-culture delays differentiation of erythroid cells. CD34⁺ cells were cultured with and without OP9 stromal cells in an erythroid differentiation culture. (a) Erythroblasts (red arrows) attached to OP9 stromal cells (blue arrows) at day 7 and day 26 of the co-culture taken under phase contrast microscopy (scale bars 100 μ m). Yellow arrows indicate adipocytes. (b) Comparison of the number of erythroid cells from day 0 to day 22 in control liquid and OP9 co-culture (for OP9 co-culture, only detached cells being counted) (mean \pm SD; n = 3, *p < 0.05, **p < 0.0; student's t test). (c) Erythroid cells from OP9 co-culture and liquid culture at day 20 stained with Leishman reagent and analyzed by light microscopy (scale bars 10 μ m). Orange arrows indicate polychromatic erythroblasts, black arrows indicate orthochromatic erythroblast, red arrows indicate reticulocytes.

	Pro	Baso	Poly	Ortho	Retics
Liquid d8	70.8% \pm 2.3%	27% \pm 1.1%	2.2% \pm 1.3%	0%	0%
OP9 d8	74.8% \pm 2.5%	23.4% \pm 1.5%	1.8% \pm 1.0%	0%	0%
Liquid d14	8.6% \pm 1.4%	11.7% \pm 1.3%	23.5% \pm 2.0%	33.4% \pm 3.1%	22.8% \pm 1.0%
OP9 d14	14.1% \pm 1.6%	12.2% \pm 2.9%	27.2% \pm 1.9%	31.5% \pm 2.9%	15.0% \pm 0.6%
Liquid d18	0%	0%	0%	24.3% \pm 4.4%	75.7% \pm 4.4%
OP9 d18	0%	8.6% \pm 2.8%	19.3% \pm 2.6%	32.9% \pm 1.8%	39.2% \pm 4.4%

Table 1. Morphological analysis of erythroid cells at different time points in the cultures with and without OP9 cells (mean \pm SD, n = 3).

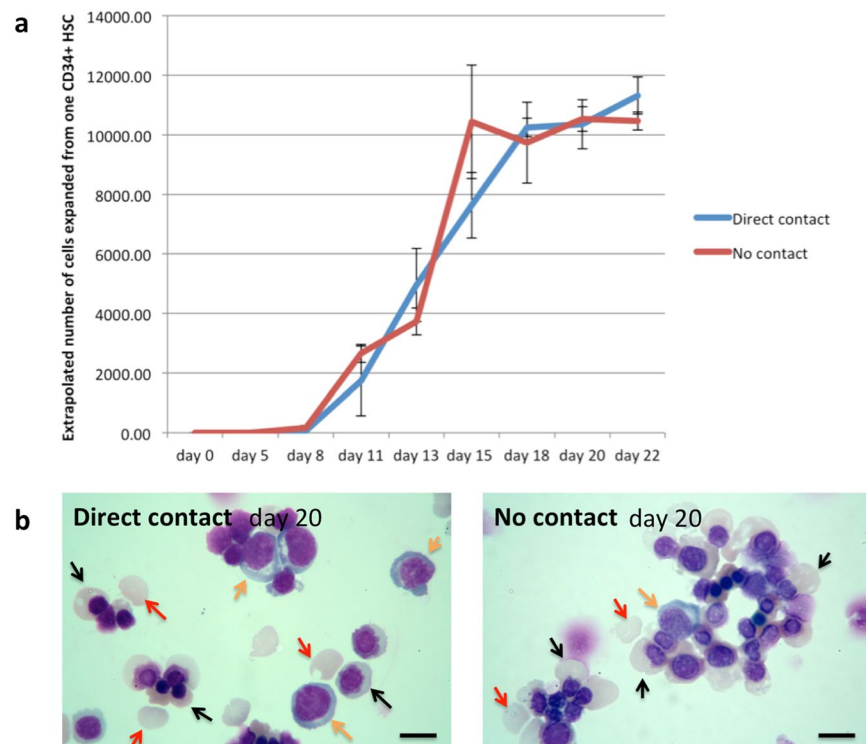


Figure 2. Direct contact of erythroblasts with OP9 cells is not required to delay differentiation of erythroid cells. CD34⁺ cells were maintained in OP9 co-culture with or without direct contact between the erythroid and OP9 cells (a) Comparison of the number of erythroid cells from day 0 to day 22 in OP9 co-culture with or without direct contact between the erythroid and OP9 cells (mean \pm SD; $n = 3$, $p > 0.05$ at all time points; student's t test). (b) Erythroid cells from OP9 co-culture with and without direct contact at day 20 stained with Leishman reagent and analyzed by light microscopy (scale bars 10 μ m). Orange arrows indicate polychromatic erythroblasts, black arrows indicate orthochromatic erythroblast, red arrows indicate reticulocytes.

	OP9 conditioned media	control media	p value
Orthochromatic	9.3% \pm 1.1%	9.6% \pm 1.7%	0.825976502
Reticulocyte	90.7% \pm 1.1%	90.4% \pm 1.7%	0.825976502

Table 2. Morphological analysis of day 19 erythroid cells maintained in OP9 conditioned media and control media (mean \pm SD, $n = 3$, student's t-test).

with OP9-conditioned media, the data indicate factors secreted by the OP9 cells delay differentiation and facilitate prolonged expansion of earlier erythroid cell populations. At later time points, the cultures were more synchronous than in the previous experiments, with similar proportions of orthochromatic erythroblasts and reticulocytes (Table 2), however the total number of these cell types were significantly higher in the OP9-conditioned media; at day 19, $5.57 \times 10^7 \pm 8 \times 10^6$ orthochromatics* and $5.4 \times 10^8 \pm 2.7 \times 10^7$ reticulocytes** compared to $1.66 \times 10^7 \pm 3.63 \times 10^6$ orthochromatics and $1.57 \times 10^8 \pm 2.98 \times 10^7$ reticulocytes respectively in the control media ($n = 3$, * $p = 0.0015$, ** $p < 0.001$).

Identification of OP9 secretory proteins using isobaric Tandem Mass Tag labelling and mass spectrometry.

Finally, to identify factors in the OP9-conditioned media that may act on the erythroblasts to delay differentiation, isobaric Tandem Mass Tag labelling and nanoLC-MS/MS was used¹¹ to compare the abundance of proteins in the OP9-conditioned and normal (control) media (see Methods). The raw data files were processed and quantified using Proteome Discoverer software v2.1 (Thermo Scientific) and searched against the UniProt Mouse (78740 entries) database using the SEQUEST algorithm to identify proteins secreted by the murine OP9 cells. For analysis only quantifications obtained from two or more unique peptides per protein were considered, with a comparative threshold of 2¹⁶. Using these criteria, 90 proteins were quantified (Suppl Table 3A). As cells with self-renewal capacity were detected in all 3 media of the culture system, we screened the data for proteins that were consistently at a higher level across all three OP9-conditioned media compared to respective control media, identifying 18 proteins (Table 3). No proteins were at a higher level across the control media. However, to confirm that the proteins identified at a higher level in the OP9-conditioned media originated

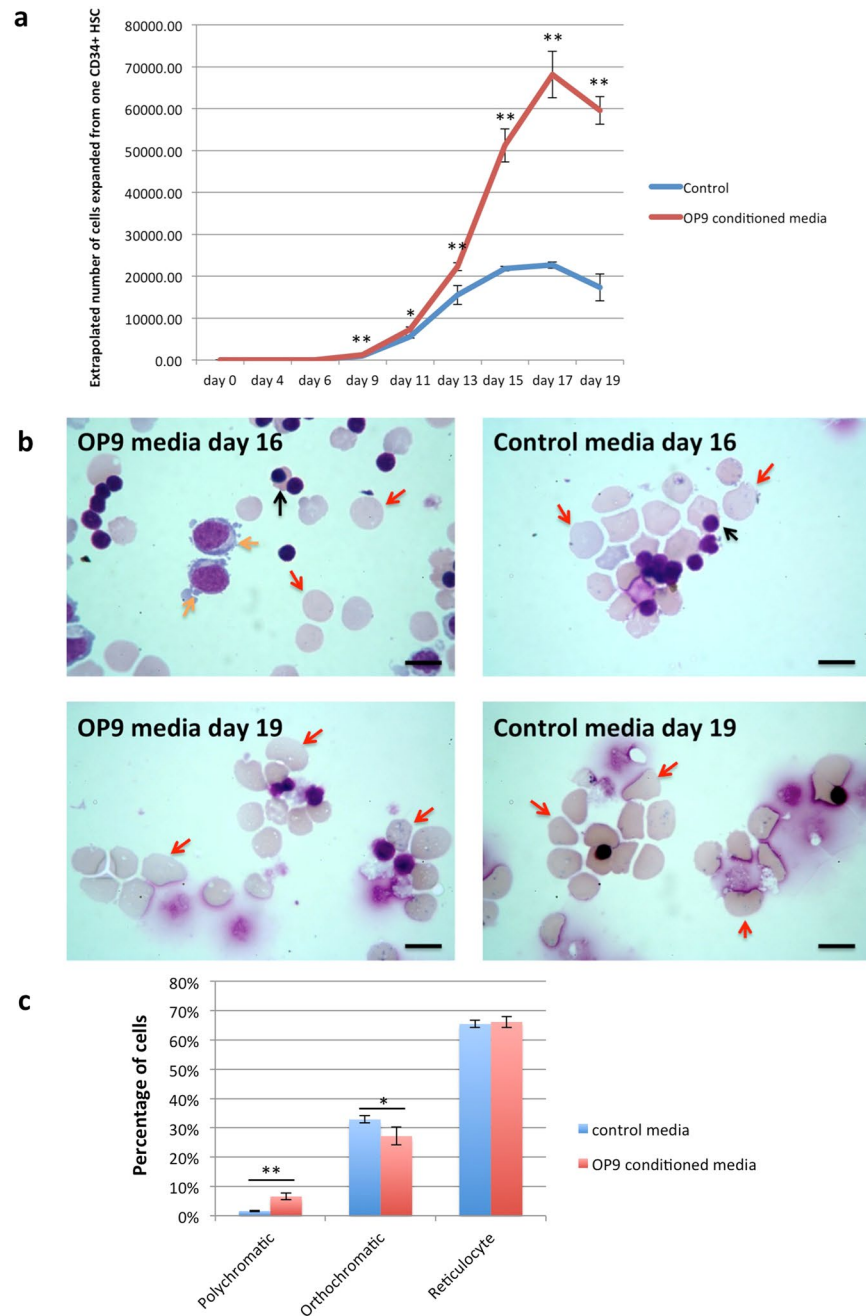


Figure 3. OP9-conditioned culture media delays differentiation of erythroid cells and increases expansion potential of cultures. CD34⁺ cells were cultured with OP9-conditioned culture media or control culture media for 19 days. **(a)** Comparison of the number of erythroid cells from day 0 to day 19 in cultures with OP9-conditioned media or control media (mean ± SD; n = 3, *p < 0.05, **p < 0.01; student's t test). **(b)** Erythroid cells maintained in OP9-conditioned culture media or control culture media at day 16 and 19 stained with Leishman reagent and analyzed by light microscopy (scale bars 10 μm). Orange arrows indicate polychromatic erythroblasts, black arrows indicate orthochromatic erythroblast, red arrows indicate reticulocytes. **(c)** Morphological analysis of day 16 erythroid cells maintained in OP9 conditioned media and control media (mean ± SD; n = 3, *p < 0.05, **p < 0.01; student's t test).

from the OP9 cells, and not from the serum components of the media with variation in level introduced during preparation, we next searched the raw data files against the UniProt Human (134169 entries) and Bovine (31855 entries) databases (Suppl Tables 3B and C). Again, no proteins were consistently detected at a higher level across the control media. However, 7 proteins at a higher level across all OP9 media were detected on screening the bovine database and 8 on screening the human database, 11 of which were common to those identified at a higher level across OP9 media from the mouse database search. We therefore interrogated the data for each individual peptide to identify the source of the proteins. Peptides with sequences specific to just the bovine and/or

Accession	Description	Unique Peptides	Peptides	Primary OP9/Ctrl	Secondary OP9/Ctrl	Tertiary OP9/Ctrl
Q3TXQ4	Epididymal secretory protein E1 GN = Npc2	2	2	39.939	60.295	44.861
Q62356	Follistatin-related protein 1 GN = Fstl1	2	2	21.167	19.100	9.835
P11859	Angiotensinogen GN = Agt	5	5	9.024	20.481	9.918
Q5NCU4	SPARC GN = Sparc	11	11	6.504	12.783	7.595
Q3TP88	Collagen Type I Alpha 2 Chain GN = Col1a2	2	2	5.488	6.549	3.497
Q9QUN9	Dickkopf-related protein 3 GN = Dkk3	4	4	4.486	9.849	5.371
Q02819	Nucleobindin-1 GN = Nucleb1	9	9	4.225	17.923	5.085
A0A0A6YWC8	Vimentin GN = Vim	3	3	4.065	6.724	2.217
P10605	Cathepsin B GN = Ctsb	9	9	3.667	7.885	5.122
P61982	14-3-3 protein gamma GN = Ywhag	3	5	3.372	3.440	5.582
Q9WUU7	Cathepsin Z GN = Ctsz	5	5	3.030	8.107	2.966
Q60994	Adiponectin GN = Adipoq	5	5	2.756	16.040	3.943
P11087	Collagen alpha-1(I) chain GN = Col1a1	4	4	2.679	3.763	2.071
Q8K173	Col3a1 protein GN = Col3a1	2	2	2.660	3.384	2.419
P03953	Complement factor D GN = Cfd	3	3	2.481	12.126	7.427
O09164	Extracellular superoxide dismutase [Cu-Zn] GN = Sod3	2	2	2.340	6.509	5.747
H3BLB7	Insulin-like growth factor-binding protein 4 GN = Igfbp4	2	2	2.102	12.270	3.305
P16015	Carbonic anhydrase 3 GN = Ca3	2	2	2.058	6.284	3.168

Table 3. Proteins consistently presented at a higher level across OP9-conditioned primary, secondary and tertiary media compared to respective control media. Culture media were serum depleted, fractionated and proteins subjected to trypsin digest, with resultant peptides labelled with TMTs for nanoLC-MS/MS based quantitation. Values show the ratio of protein levels between OP9-conditioned media and control media. Proteins were quantified from at least two unique peptides. Peptides and unique peptides; the total number of peptide sequences and number of unique peptides identified for that protein. Proteome Discoverer software v1.4 was used for analysis.

human orthologue of a protein, were not at a higher level across the OP9 conditioned media, only peptides with a sequence also common to the mouse being higher. In contrast 15 of the proteins detected at a higher level across all OP9 conditioned media from the mouse database search had mouse specific peptides which were at a higher level (Suppl Table 4). For the remaining 3 proteins all peptides detected were common to the mouse and bovine and/or human orthologues. Thus, the proteins detected at a higher level from the bovine and human database searches were quantified only from peptides common to the respective mouse orthologue. The analyses confirm that all 18 candidate proteins identified were secreted by the OP9 cells and not of human or bovine origin.

Discussion

This study shows that co-culture of adult peripheral blood CD34⁺ haematopoietic stem cells with OP9 stromal cells maintains a population of self-renewing erythroblasts for a prolonged period, resulting in an increased cell yield per culture. Moreover, direct contact between OP9 cells and erythroblasts is not required, the same effect being achieved even with OP9 conditioned media; the number of reticulocytes obtained consistently around 3.5 fold higher than in control cultures.

Previous studies have utilized co-culture with macrophages to enhance *in vitro* erythropoiesis, based on the premise that *in vivo* erythropoiesis occurs in erythroblastic islands supported by a central macrophage. Such macrophages are surrounded by various stages of developing erythroid cells, from CFU-E to reticulocytes¹⁷, and are believed to be important for supporting erythroblast proliferation and differentiation¹⁷. However, macrophages are clearly not essential *in vitro* as erythroid cells can be successfully differentiated from CD34⁺ cells in isolation with high enucleation rates¹⁴. Notwithstanding, macrophages may further enhance erythropoietic culture systems, as co-culture of human erythroblasts with macrophages has been shown to increase expansion rates by a similar magnitude to that in our present study. However, direct contact of erythroid cells with macrophages was required to achieve the effect³, which is undesirable when considering development for therapeutics due to potential contamination of the product with nucleated cells, and also the requirement for immune compatibility between macrophage and erythroid cells. In contrast our study shows not only OP9 co-culture, but also the application of just factors secreted by OP9 cells delay differentiation and facilitate prolonged expansion of earlier erythroid cell populations, importantly with no downstream block to terminal differentiation or enucleation. It is therefore likely that the active factors secreted by OP9 cells are distinct to those expressed by macrophages, and present a potentially novel way to increase erythroid cell numbers without the need for genetic manipulation or co-culture.

Currently, with the culture system used in our study >10⁵ fold expansion of erythroid cells can be achieved in larger scale cultures¹⁸. As approximately 10⁶ adult stem cells are isolated from an apheresis cone, this gives a yield of around 10¹¹ erythroid cells from a single donor. By extrapolation, OP9-conditioned media would increase this yield to around 3.5 × 10¹¹. Enucleation rates *in vitro* vary between 60–95%^{14,18} for cells from different donors, which therefore gives a final potential yield of 2–3 × 10¹¹ reticulocytes per culture. 1 unit of blood

contains around 2×10^{12} RBCs. However, the age of the population is asynchronous with a proportion of cells immediately removed from circulation following transfusion as are at end of lifespan. In contrast all cells from *in vitro* cultures are nascent, and therefore closely synchronous in age, with the number of cells required for transfusion anticipated to be less than from donor blood. Thus the number of cells achieved from *in vitro* cultures is now approaching that required for a therapeutic product. Notwithstanding, further improvement is still required including development of custom filters as presently a proportion of reticulocytes are lost during this final process, and transfer of the culture system to GMP conditions.

As a preliminary approach to identify the factors responsible for the delayed differentiation in our study, we analysed the secretome of the OP9 cells. Of the 18 candidate proteins identified, a role in promoting erythroid cell proliferation has previously been reported for angiotensinogen¹⁹, in promoting HSC proliferation for NPC2²⁰, 14–3–3 gamma²¹ and adiponectin²², and in promoting proliferation of other cells types for follistatin-related protein 1²³, DKK²⁴, secreted vimentin²⁵, cathepsin B²⁶ and extracellular superoxide dismutase²⁷. Further studies are now underway to generate recombinant protein for each of the identified proteins to investigate their effect on erythroid cell expansion, both singularly and in various combinations to determine whether an individual factor or synergy between several factors is required.

Materials and Methods

Isolation of adult CD34+ cells. Leucocyte reduction system (LRS) cones were obtained from healthy donors with written informed consent for research use in accordance with the Declaration of Helsinki and approved by Siriraj Institutional Review Board (COA no. Si019/2016). Three LRS cones from 3 donors were used for each part of experiment (n = 3). The CD34+ cells were isolated from the peripheral blood mononuclear cell fraction using a MiniMacs direct CD34+ progenitor cell isolation kit following the manufacturer's instructions.

Erythroid differentiation of CD34+ cells. The CD34+ cells were cultured using the 3-stage erythroid culture system. During the first 8 days the cells were maintained in Basic medium which was Iscove's medium (Biochrom) containing 3% (v/v) human AB serum (Sigma-Aldrich), 10% fetal calf serum (Hyclone, Fisher Scientific, Ltd), 10 µg/ml insulin (Sigma-Aldrich), 3 U/ml heparin (Sigma-Aldrich), 3 U/ml EPO (Roche), 200 µg/ml transferrin (R&D Systems) and 1 U/ml penicillin/streptomycin (Sigma-Aldrich) supplemented with 10 ng/ml SCF (R&D Systems) and 1 ng/ml IL-3 (R&D Systems) (primary medium). IL-3 and SCF were withdrawn from the medium on day 8 (secondary medium) and 11 (tertiary medium), respectively. In addition, extra transferrin was added to the medium to the final concentration of 500 µg/ml from day 11 onward. The cells were counted and medium was added every other day. The cultured cells were maintained at 37 °C, 5% CO₂ throughout the culture period. At indicated time points, aliquots of cells were collected for morphological analysis using cytospin and Leishman staining. Two sample equal variance t-test was carried out to determine the statistic significances of cell numbers and cell types.

Culture system for OP9 cells. OP9 mouse stromal cells were maintained in the OP9 growth medium, consisting of αMEM culture medium (Invitrogen) containing 100 µM 1-Thioglycerol (MTG) (Sigma-Aldrich), 100 U/ml penicillin/streptomycin and 20% (v/v) FCS. OP9 cells were separated and expanded every 4 days, when the cells were confluent, by trypsinisation. The harvested cells were seeded onto a 10-cm dish coated with 0.1% bovine gelatin solution (Sigma-Aldrich).

Tandem Mass Tag labeling, preparation of samples for Mass Spectrometry, database search parameters and acceptance criteria for identifications. As all media contain both bovine and human serum, the high level of proteins from which could mask identification of proteins secreted by the OP9 cells, the media were serum depleted using a Pierce albumin depletion kit for bovine proteins followed by Pierce top 12 abundant protein depletion spin columns for human proteins. Remaining proteins were subject to trypsin cleavage, and the resultant peptides labeled with isobaric Tandem Mass Tags for comparative quantitation, and analysed by nanoLC-MS/MS, as previously described¹¹. Following analysis against the UniProt Mouse database (see main text) we next searched the raw data files against the UniProt Human (134169 entries) and Bovine (31855 entries) databases (Suppl Table 4). For analysis only quantifications obtained from two or more unique peptides per protein were considered, with a comparative threshold of 2¹⁶.

References

1. Anstee, D. J., Gampel, A. & Toye, A. M. *Ex-vivo* generation of human red cells for transfusion. *Current opinion in hematology* **19**, 163–169 (2012).
2. Klei, T. R., Meinderts, S. M., van den Berg, T. K. & van Bruggen, R. From the Cradle to the Grave: The Role of Macrophages in Erythropoiesis and Erythrophagocytosis. *Frontiers in immunology* **8**, 73 (2017).
3. Ramos, P. *et al.* Macrophages support pathological erythropoiesis in polycythemia vera and beta-thalassemia. *Nature medicine* **19**, 437–445 (2013).
4. Baek, E. J., Kim, H. S., Kim, J. H., Kim, N. J. & Kim, H. O. Stroma-free mass production of clinical-grade red blood cells (RBCs) by using poloxamer 188 as an RBC survival enhancer. *Transfusion* **49**, 2285–2295 (2009).
5. Youn, M. *et al.* Loss of Forkhead box M1 promotes erythropoiesis through increased proliferation of erythroid progenitors. *Haematologica* **102**, 826–834 (2017).
6. Nakano, T., Kodama, H. & Honjo, T. Generation of lymphohematopoietic cells from embryonic stem cells in culture. *Science* **265**, 1098–1101 (1994).
7. Nakano, T., Kodama, H. & Honjo, T. *In vitro* development of primitive and definitive erythrocytes from different precursors. *Science* **272**, 722–724 (1996).
8. Suwabe, N., Takahashi, S., Nakano, T. & Yamamoto, M. GATA-1 regulates growth and differentiation of definitive erythroid lineage cells during *in vitro* ES cell differentiation. *Blood* **92**, 4108–4118 (1998).

9. Vodyanik, M. A., Bork, J. A. & Thomson, J. A. & Slukvin, I. Human embryonic stem cell-derived CD34+ cells: efficient production in the coculture with OP9 stromal cells and analysis of lymphohematopoietic potential. *Blood* **105**, 617–626 (2005).
10. Dias, J. *et al.* Generation of red blood cells from human induced pluripotent stem cells. *Stem cells and development* **20**, 1639–1647 (2011).
11. Trakarnsanga, K. *et al.* Qualitative and quantitative comparison of the proteome of erythroid cells differentiated from human iPSCs and adult erythroid cells by multiplex TMT labelling and nanoLC-MS/MS. *PLoS one* **9**, e100874 (2014).
12. Yang, C. T. *et al.* Human induced pluripotent stem cell derived erythroblasts can undergo definitive erythropoiesis and co-express gamma and beta globins. *British journal of haematology* **166**, 435–448 (2014).
13. Lu, S. J. *et al.* Biologic properties and enucleation of red blood cells from human embryonic stem cells. *Blood* **112**, 4475–4484 (2008).
14. Griffiths, R. E. *et al.* Maturing reticulocytes internalize plasma membrane in glycophorin A-containing vesicles that fuse with autophagosomes before exocytosis. *Blood* **119**, 6296–6306 (2012).
15. Choi, K. D., Vodyanik, M. & Slukvin, I. I. Hematopoietic differentiation and production of mature myeloid cells from human pluripotent stem cells. *Nature protocols* **6**, 296–313 (2011).
16. Wilson, M. C. *et al.* Comparison of the Proteome of Adult and Cord Erythroid Cells, and Changes in the Proteome Following Reticulocyte Maturation. *Molecular & cellular proteomics: MCP* **15**, 1938–1946 (2016).
17. Manwani, D. & Bieker, J. J. The erythroblastic island. *Current topics in developmental biology* **82**, 23–53 (2008).
18. Kupzig, S., Parsons, S. F., Curnow, E., Anstee, D. J. & Blair, A. Superior survival of *ex vivo* cultured human reticulocytes following transfusion into mice. *Haematologica* **102**, 476–483 (2017).
19. Mrug, M., Stopka, T., Julian, B. A., Prchal, J. F. & Prchal, J. T. Angiotensin II stimulates proliferation of normal early erythroid progenitors. *The Journal of clinical investigation* **100**, 2310–2314 (1997).
20. Heo, K. *et al.* Involvement of Niemann-Pick type C2 protein in hematopoiesis regulation. *Stem cells* **24**, 1549–1555 (2006).
21. Ajjappala, B. S. *et al.* 14-3-3 gamma is stimulated by IL-3 and promotes cell proliferation. *Journal of immunology* **182**, 1050–1060 (2009).
22. DiMascio, L. *et al.* Identification of adiponectin as a novel hemopoietic stem cell growth factor. *Journal of immunology* **178**, 3511–3520 (2007).
23. Wei, K. *et al.* Epicardial FSTL1 reconstitution regenerates the adult mammalian heart. *Nature* **525**, 479–485 (2015).
24. Zenzmaier, C., Sampson, N., Plas, E. & Berger, P. Dickkopf-related protein 3 promotes pathogenic stromal remodeling in benign prostatic hyperplasia and prostate cancer. *The Prostate* **73**, 1441–1452 (2013).
25. Shigyo, M., Kuboyama, T., Sawai, Y., Tada-Umezaki, M. & Tohda, C. Extracellular vimentin interacts with insulin-like growth factor 1 receptor to promote axonal growth. *Scientific reports* **5**, 12055 (2015).
26. Rajah, T. & Chow, S. C. Suppression of Human T Cell Proliferation Mediated by the Cathepsin B Inhibitor, z-FA-FMK Is Due to Oxidative Stress. *PLoS one* **10**, e0123711 (2015).
27. Laukkanen, M. O. Extracellular Superoxide Dismutase: Growth Promoter or Tumor Suppressor? *Oxidative medicine and cellular longevity* **2016**, 3612589 (2016).

Acknowledgements

The authors would like to thank Dr Viroje Chongkolwatana and staff at the Hemapheresis Unit, Department of Transfusion Medicine, Faculty of Medicine Siriraj Hospital, Mahidol University for the leukocyte-reduction system cones. The work was supported by the Thailand Research Fund (grant number MRG5980061) and the National Institute for Health Research Blood and Transplant Unit (NIHR BTRU) in Red Blood Cell Products at the University of Bristol in Partnership with NHS Blood and Transplant (NHSBT). The views expressed are those of the author(s) and not necessarily those of the NHS, the NIHR or the Department of Health.

Author Contributions

J.F. and C.S. supervised the study; K.T., M.C.W., T.N.A., C.S. and J.F. designed experiments, K.T., M.C.W., K.J.H. and T.N.A. performed experiments; K.T., M.C.W. and J.F. analysed data; J.F. and K.T. wrote the paper; K.T., M.C.W., C.S. and J.F. read and edited the paper.

Additional Information

Supplementary information accompanies this paper at <https://doi.org/10.1038/s41598-018-20491-1>.

Competing Interests: The authors declare that they have no competing interests.

Publisher's note: Springer Nature remains neutral with regard to jurisdictional claims in published maps and institutional affiliations.



Open Access This article is licensed under a Creative Commons Attribution 4.0 International License, which permits use, sharing, adaptation, distribution and reproduction in any medium or format, as long as you give appropriate credit to the original author(s) and the source, provide a link to the Creative Commons license, and indicate if changes were made. The images or other third party material in this article are included in the article's Creative Commons license, unless indicated otherwise in a credit line to the material. If material is not included in the article's Creative Commons license and your intended use is not permitted by statutory regulation or exceeds the permitted use, you will need to obtain permission directly from the copyright holder. To view a copy of this license, visit <http://creativecommons.org/licenses/by/4.0/>.

© The Author(s) 2018