



In vivo Differential Brain Clearance and Catabolism of Monomeric and Oligomeric Alzheimer's A β protein

Farron L. McIntee^{1†‡}, Patrizia Giannoni^{1†‡}, Steven Blais^{2,3†}, George Sommer⁴, Thomas A. Neubert^{2,3}, Agueda Rostagno^{1§} and Jorge Ghiso^{1,5*§}

OPEN ACCESS

Edited by:

Roxana Octavia Carare,
University of Southampton, UK

Reviewed by:

Ramesh Kandimalla,
Texas Tech University, USA
Cheryl Hawkes,
Open University, UK

*Correspondence:

Jorge Ghiso
jorge.ghiso@nyumc.org

† Present Address:

Farron L. McIntee,
Graduate School, Wayne State
University, Detroit, MI, USA;
Patrizia Giannoni,
Centre National de la Recherche
Scientifique, UMR-5203, Institut de
Génomique Fonctionnelle, Université
de Montpellier, Montpellier, France;
Steven Blais,
Otsuka Pharmaceuticals, Princeton,
NJ, USA

‡ Both first authors have contributed
equally to this work.

§ Both senior authors have contributed
equally to this work.

Received: 29 June 2016

Accepted: 07 September 2016

Published: 27 September 2016

Citation:

McIntee FL, Giannoni P, Blais S,
Sommer G, Neubert TA, Rostagno A
and Ghiso J (2016) *In vivo* Differential
Brain Clearance and Catabolism of
Monomeric and Oligomeric
Alzheimer's A β protein.
Front. Aging Neurosci. 8:223.
doi: 10.3389/fnagi.2016.00223

¹ Department of Pathology, New York University School of Medicine, New York, NY, USA, ² Department of Biochemistry and Molecular Pharmacology, New York University School of Medicine, New York, NY, USA, ³ Kimmel Center for Biology and Medicine at the Skirball Institute, New York University School of Medicine, New York, NY, USA, ⁴ Radiation Safety Office, New York University School of Medicine, New York, NY, USA, ⁵ Department of Psychiatry, New York University School of Medicine, New York, NY, USA

Amyloid β (A β) is the major constituent of the brain deposits found in parenchymal plaques and cerebral blood vessels of patients with Alzheimer's disease (AD). Several lines of investigation support the notion that synaptic pathology, one of the strongest correlates to cognitive impairment, is related to the progressive accumulation of neurotoxic A β oligomers. Since the process of oligomerization/fibrillization is concentration-dependent, it is highly reliant on the homeostatic mechanisms that regulate the steady state levels of A β influencing the delicate balance between rate of synthesis, dynamics of aggregation, and clearance kinetics. Emerging new data suggest that reduced A β clearance, particularly in the aging brain, plays a critical role in the process of amyloid formation and AD pathogenesis. Using well-defined monomeric and low molecular mass oligomeric A β 1-40 species stereotaxically injected into the brain of C57BL/6 wild-type mice in combination with biochemical and mass spectrometric analyses in CSF, our data clearly demonstrate that A β physiologic removal is extremely fast and involves local proteolytic degradation leading to the generation of heterogeneous C-terminally cleaved proteolytic products, while providing clear indication of the detrimental role of oligomerization for brain A β efflux. Immunofluorescence confocal microscopy studies provide insight into the cellular pathways involved in the brain removal and cellular uptake of A β . The findings indicate that clearance from brain interstitial fluid follows local and systemic paths and that in addition to the blood-brain barrier, local enzymatic degradation and the bulk flow transport through the choroid plexus into the CSF play significant roles. Our studies highlight the diverse factors influencing brain clearance and the participation of various routes of elimination opening up new research opportunities for the understanding of altered mechanisms triggering AD pathology and for the potential design of combined therapeutic strategies.

Keywords: A β brain efflux, A β brain homeostasis, local proteolytic degradation, stereotaxic intra-cerebral injection, targeted mass spectrometric analysis, cerebrospinal fluid

INTRODUCTION

The most frequent form of amyloidosis in humans is related to the deposition of amyloid- β (A β) in Alzheimer's disease (AD), with cumulative biochemical, genetic, and *in vivo* data strongly suggesting a central role for this molecule in the pathogenesis of the disorder. A β is the major constituent of the tissue deposits found in parenchymal plaques and cerebral blood vessels of patients with AD and with Down's syndrome, the latter exhibiting a trisomy in chromosome 21 which codes for the Amyloid Precursor Protein (APP) and lead to AD pathology by middle age (Masters et al., 1985a; Busciglio et al., 2002). Indeed, A β is an internal processing product of this transmembrane APP precursor molecule (Querfurth and LaFerla, 2010; Rostagno et al., 2010) generated through proteolytic cleavage by the β - and γ -secretases (Masters et al., 1985b; Kang et al., 1987; Ghiso and Frangione, 2002). Although it is unclear what primarily triggers and drives the progression of AD, histopathologic, genetic, biochemical, and physicochemical studies, together with information obtained from transgenic animal models, strongly support the notion that abnormal aggregation/fibrillization, and subsequent A β tissue accumulation are key players in the disease pathogenesis (Mattson, 2004; Walsh and Selkoe, 2007; Querfurth and LaFerla, 2010; Holtzman et al., 2011). Although the abundance of mature amyloid plaques correlates poorly with AD severity (Lue et al., 1999; McLean et al., 1999), current data indicate that the transition from soluble monomeric species normally found in circulation to oligomeric, protofibrillar, and end-point fibrillar assemblies contribute significantly to disease pathogenesis. Intermediate oligomeric and protofibrillar forms, in particular, seem to display the most potent effects in neuronal cells, inducing synaptic disruption and neurotoxicity (Caughey and Lansbury, 2003; Walsh and Selkoe, 2007). Numerous studies have shown that these soluble oligomeric forms of A β —which have been identified *in vivo* and isolated from brain, plasma, and CSF (Kuo et al., 1996; Roher et al., 1996, 2000)—are capable of affecting synaptic function by various mechanisms (Galvan and Hart, 2016), impairing glutamatergic synaptic transmission strength and plasticity, altering synaptic structure (Whalen et al., 2005), reducing efficacy of synapses and causing synaptic loss (Walsh et al., 2002; Haass and Selkoe, 2007; Nicholls et al., 2008).

The process of oligomerization/fibrillization is concentration-dependent, and therefore it is highly reliant on the homeostatic mechanisms that regulate the steady state levels of A β modulating the delicate balance between rate of synthesis, dynamics of aggregation, and rate of brain efflux. For the majority of AD cases, which are of late-onset and of sporadic origin, the cause of this imbalance is unclear and remains a subject of active investigation. While to date no evidence supports an increase in the overall production in sporadic cases, current research suggests that an impaired clearance in late onset AD plays a critical role in the process of amyloid formation and the pathogenesis of the disease (Mawuenyega et al., 2010). Many pathways are currently being investigated, among them perivascular drainage, receptor-mediated cell uptake, blood brain barrier (BBB) transport, and local proteolytic degradation, all undoubtedly contributors to brain A β clearance (Deane

et al., 2004, 2009; Bakker et al., 2016; Morris et al., 2016) in conjunction with the bulk flow of ISF into the CSF through the choroid plexus epithelium, which remarkably shares many of the receptors involved in BBB clearance (Dietrich et al., 2008; Behl et al., 2009) as well as the recently described paths for CSF recycling through the ISF (Iliff et al., 2012). Notably, in spite of the relevance of A β oligomerization for the disease pathogenesis, the vast majority of the reported A β clearance data have been generated with monomeric A β species or with peptides with poorly characterized aggregation state (Zlokovic et al., 1993; Ghersi-Egea et al., 1996; Martel et al., 1997; Mackic et al., 1998; Poduslo et al., 1999; Shibata et al., 2000; Strazielle et al., 2000; Bading et al., 2002; Devi and Ohno, 2012). The present work was designed to address this gap in knowledge and provide quantitative evaluation of the differential brain removal efficiency of pathogenic oligomeric A β assemblies while providing information into the relevance of the *in situ* catabolic break-down of the peptide. Based on data from intra-cerebral stereotaxic injections of well-defined monomeric and low molecular mass oligomeric A β assemblies in C57BL/6 wild-type mice in combination with biochemical and mass spectrometry analyses in CSF, the current work highlights the fast physiologic degradation and brain elimination of the peptide and provides a clear indication of the detrimental role of oligomerization for brain A β efflux. Immunofluorescence confocal microscopy studies bring insight into the cellular pathways involved in the brain clearance and cellular uptake of A β .

MATERIALS AND METHODS

Peptide Synthesis, Solubilization, and Oligomerization

A β 1–40 (DAEFRHDSGYEVHHQKLVFFAEDVGSNKGAIIGLMVGGVV) homologous to residues 672–711 of human A β precursor protein APP770 was synthesized by J. Elliot at the W. M. Keck Facility at Yale University using *N*-*tert*-butyloxycarbonyl chemistry and purified by reverse phase-high performance liquid chromatography on a Vydac C4 column (Western Analytical, Murrieta, CA). The molecular mass of the synthetic homolog was corroborated by matrix-assisted laser desorption ionization time-of-flight (MALDI-ToF) mass spectrometry, and its concentration assessed by amino acid analysis, as we previously reported (Ghiso et al., 2004). The peptide eluted as a single component from the HPLC column and exhibited an experimental molecular mass of 4329.1 Da (theoretical mass: 4329.9 Da).

A β 1–40 was incubated at a concentration of 1 mg/ml in 1,1,1,3,3,3, hexafluoro-isopropanol (HFIP; Sigma Chemical Co., St. Louis, MO) for 24 h, a pretreatment that breaks down β -sheet structures and disrupts hydrophobic forces leading to monodisperse amyloid subunit preparations (Stine et al., 2003). The HFIP-pretreated peptide was lyophilized, subsequently reconstituted to 1 mM in deionized water followed by further dilution in 2X phosphate-buffered saline (PBS) to a final concentration of 1 μ g/ μ l in PBS and either immediately used for radioiodination and direct intracerebral injection or maintained frozen at -80°C , storage conditions that preserved

the monomeric structures, for up to 1 month. For the studies involving clearance of A β oligomers, A β 1-40—reconstituted in PBS as above—was aggregated for 24 h at 37°C to generate low molecular mass oligomers, as we previously described (Fossati et al., 2010), prior to radioiodination, since labeling stably formed A β assemblies is known to render labeled preparations with unperturbed structural morphology preventing the generation of undesired atypical oligomers (Jungbauer et al., 2009). The resulting A β 1-40 oligomers were immediately used for radiolabeling, for direct intracerebral injections (see below) or stored at –80°C, condition that preserved the original oligomerization structures for up to 2 weeks.

Peptide oligomerization was corroborated via electron microscopy (EM), as previously described (Fossati et al., 2010). Five microliters of either monomeric or oligomeric A β 1-40 preparations were placed onto carbon-coated 400 mesh Cu/Rh grids (Ted Pella, Inc., Redding, CA) and stained with 1% uranyl acetate in distilled water (Polysciences, Inc., Warrington, PA). Stained grids were examined in a Philips CM-12 transmission electron microscope and photographed with a Gatan (4 × 2.7 k) digital camera at the Image Core Facility of the Skirball Institute of Biomedical Medicine, NYU School of Medicine, as described (Solito et al., 2009; Fossati et al., 2010).

Peptide Radiolabeling

A β 1-40 in both monomeric and oligomeric forms was radiolabeled using 1,3,4,6-tetrachloro-3 α -6 α -diphenylglycouril pre-coated tubes (Iodogen, ThermoFisher Scientific/Pierce, Waltham, MA), following the manufacturer's specifications. All radiolabeling procedures were carried out in a Standalone Radioiodine IH-350 hood (Atlantic Nuclear, Rockland, MA). Na¹²⁵I in NaOH (1mCi, PerkinElmer, Waltham, MA) was added to an Iodotube and combined with 20 μ l of 0.1 M HCl and 60 μ l of 1/10 diluted PBS. After 5-min incubation, the reaction tube was added of either monomeric or oligomeric A β 1-40 (1 μ g/ μ l; 100 μ l), prepared as above, and the radiolabeling reaction carried out for 20 min. Following removal of free Iodine using a desalting polyacrylamide column (D-salt, cut off 1.8 kDa, Pierce), radioactivity of labeled A β 1-40 was assessed in a scintillation counter (LS 6500 Multi-purpose Scintillation Counter, Beckman Coulter, Brea, CA). [¹²⁵I]A β 1-40 was analyzed by autoradiography following 16.5% SDS-polyacrylamide gel electrophoresis and subsequent direct exposure to HyBlot CL film (Denville Scientific Inc., South Plainfield, NJ). Iodinated A β peptides were stored at –80°C and used within 2 weeks to minimize radiolysis. Under these experimental conditions, [¹²⁵I] incorporation rendered specific activities in the range of 3–5 μ Ci/ μ g with >98% TCA precipitable counts (Ghiso et al., 2004; Calero and Ghiso, 2005).

Intracerebral Inoculation of Radio-Iodinated A β 1-40

C57BL/6 mice (Taconic Biosciences, Hudson, NY), were intracerebrally injected with A β 1-40 preparations following institutionally approved IACUC protocols, essentially as previously reported by our laboratory (Fossati et al., 2016). Briefly, 26–30 week old mice were anesthetized by i.p. injection of

a mixture of ketamine/xylazine (120 and 10 mg/kg respectively), positioned in a stereotaxic frame (David Kopf Instruments, Tujunga, CA), and intracerebrally injected (white matter of the fimbria fornix; Paxinos and Franklin Atlas coordinates: AP = –2.7, ML = –3.0 and DV = –4.0) with 1 μ l of either monomeric or oligomeric [¹²⁵I]A β 1-40 (10 μ M; flow rate: 0.2 μ l/min) with the aid of a 10 μ l Hamilton 701 RN syringe and a 30/2"/3S RN needle. To avoid reflux, the needle was left in position for 2 min after injection and then slowly withdrawn. At the selected time points after injection (5, 30, and 60 min), the animals were subjected to CSF collection as described below, sacrificed by trans-cardiac perfusion with PBS (2 min, medium flow pump, Fisher Scientific 13-876-2, 10 ml/min flow rate) followed by tissue harvest. Radioactivity remaining in the whole brain and cleared to CSF was assessed in an automated γ -counter (Perkin Elmer 1470).

Intracerebral Inoculation of Non-Radiolabeled A β 1-40 and Collection of Cerebral Spinal Fluid

For the proteomic experiments described below, C57BL/6 mice were anesthetized and injected intracerebrally with non-labeled monomeric and oligomeric A β 1-40 using the same methodology as described above for the inoculation of the radioiodinated peptides. At selected time points after inoculation (5, 30, and 60 min) CSF was collected from the cisterna magna following previously reported procedures (Liu and Duff, 2008) and in accordance with IACUC institutionally approved protocols. Briefly, after performing a 2 cm incision at the base of the skull, subcutaneous skin and neck muscles were separated with the aid of small animal micro-retractors (Fine Science Tools, Foster City, CA) to expose the dura mater of the cisterna magna. A siliconized borosilicate glass capillary (B100-75-10, Sutter Instruments, Novato, CA) was inserted through the dura mater, CSF was drawn into the capillary, and collected completely clear of blood. CSF samples, typically 5–8 μ l per animal, were immediately frozen and stored at –80°C for future proteomic analysis.

Immunohistochemical Analysis of Brain Tissue Post-A β Injection

Following intracerebral injection of non-iodinated monomeric/oligomeric A β and CSF collection, mice were sacrificed as above by trans-cardiac perfusion with PBS (2 min) followed by 4% paraformaldehyde (5 min). Brains were harvested, post-fixed in 4% paraformaldehyde (2 h, 4°C), and cryoprotected by immersion in increasing sucrose concentrations (1 day in 15% followed by 2 days in 30% solution) before freezing as previously described (Fossati et al., 2016). Serial 8 μ m-cryostat sections were collected on positively charged microscope slides and stored at –80°C until analysis. Prior to staining, sections were briefly warmed to room temperature, washed with PBS, blocked in 5% milk in PBS (1 h), and incubated in the different primary antibodies shown in **Table 1** (overnight, 4°C). Slides were subsequently washed with PBS, and further incubated with the pertinent

TABLE 1 | Primary antibodies for immunohistochemical studies.

Name	Species	Source	Dilution
A β , 6E10	Mouse monoclonal	Covance (SIG-39320)	1:200
CD-163	Goat polyclonal	Santa Cruz (SC-18796)	1:100
E-Cadherin	Rabbit polyclonal	Abcam (15148)	1:200
Factor-VIII	Rabbit polyclonal	Abcam (6994–100)	1:200
GFAP	Rabbit polyclonal	Life Technologies (Z0334)	1:200
Iba-1	Goat polyclonal	Abcam (5076–100)	1:100
Neurotubulin	Rabbit polyclonal	Abcam (18207)	1:100

anti-rabbit, anti-mouse, or anti-goat secondary antibodies conjugated to Alexafluor 568 (red signal) or Alexafluor 488 (green fluorescence; ThermoFisher/Life Technologies, Waltham, MA; 1:200, 30 min, RT). DNA was counterstained with TO-PRO (ThermoFisher/Life Technologies; 1:2000, 10 min), and sections were mounted with aqueous mounting medium (Vectashield, Vector, Olean, NY). Images were acquired in a Zeiss LSM510 confocal microscope with a 40X/1.3 oil immersion lens and processed with Image J (<https://imagej.nih.gov>) and Adobe Photoshop (Adobe, San Jose, CA).

Assessment of Differential Brain A β Local Degradation by Immunoprecipitation and Mass Spectrometry

Upon intracerebral injection of non-radiolabeled monomeric/oligomeric A β 1-40 and collection of CSF as described above, A β species in the biological fluid were immunoprecipitated with paramagnetic beads (Dynabeads M-280, Life Technologies) coated with 6E10 antibody (6 μ g/50 μ l beads), and analyzed by MALDI-ToF MS, following previously described methodologies by our laboratory (Tomidokoro et al., 2005, 2010; Hernandez-Guillamon et al., 2015). Each immunoprecipitated sample consisted of a pool of four individual CSF specimens collected from individual mice injected with non-labeled A β under identical conditions ($n = 8$). Samples were immunoprecipitated overnight at 4°C, beads washed with PBS containing 0.025% Tween-20 followed by 50 mM NH₄HCO₃, and the immunoprecipitated material subsequently eluted with 0.5 M acetic acid. After drying in a Savant SpeedVac concentrator (ThermoFisher), samples were reconstituted in 5 μ l of 0.1% Formic Acid (FA) in 50% acetonitrile, and mixed with equal volumes of alpha-4-hydroxycinnamic-acid (AHCA; Agilent Technologies) matrix. One microliter of the final mixture was spotted in duplicate on a Bruker Daltonics MTP 384 massive target T aluminum plate and analyzed at the New York University Mass Spectrometry Core for Neuroscience using a Bruker Daltonics Autoflex MALDI-ToF mass spectrometer (Bremen, Germany) in linear mode with standard instrument settings, as described (Hernandez-Guillamon et al., 2015). External calibration was performed using human adrenocorticotrophic hormone peptide 18-39 (average mass = 2465.68 Da) and insulin (average mass = 5733.49 Da). In all cases MS spectra were processed and analyzed by FlexAnalysis (Bruker Daltonics).

Statistical Analysis

ANOVA for comparison of multiple groups with Tukey *post-hoc* tests were performed using GraphPad Prism (GraphPad, La Jolla, CA). Values of $p \leq 0.05$ were considered significant.

RESULTS

Monomeric and oligomeric of A β 1-40 preparations were labeled with Na[¹²⁵I] at the tyrosine residue located at position 10 of A β (Figure 1A), as described above in Material and Methods. The use of a 1.8 kDa cut off desalting column allowed the removal of free iodine from radio-iodinated A β , as illustrated in Figure 1B by the clear separation between peaks in a representative experiment. Autoradiography after SDS-gel electrophoresis confirmed the respective monomeric or oligomeric composition of each respective preparation. As indicated in the pertinent autoradiograms shown in Figure 1C, monomeric preparations displayed a single 4 kDa band whereas oligomeric preparations consisted of low molecular mass A β species, exhibiting monomeric, dimeric, trimeric, and tetrameric components with predominance of dimeric forms. The monomeric or oligomeric nature of the preparations was corroborated via EM in parallel experiments performed using non-labeled counterparts. As illustrated in Figure 1C, monomeric preparations rendered scattered globular structures 4–6 nm in diameter whereas oligomeric preparations contained a higher number of the same globular structures in many cases associated in small groups containing 2–4 globular components. No evidence of protofibrillar formation was noticed at this time-point, in agreement with our previous reports (Solito et al., 2009; Viana et al., 2009; Fossati et al., 2010). Classic protofibrils (short rods of <150 nm in length and 4–6 nm in diameter) did not appear before an additional 24 h incubation in our experimental conditions, providing the necessary safety net of structural stability for the 1 h window of our intracerebral injection experiments. Both monomeric and oligomeric preparations were intra-cerebrally inoculated into C57BL/6 mice to evaluate their respective efflux from brain. The schematic representation in Figure 1D depicts the injection coordinates and the needle position whereas immunostaining at the actual injection site using anti-A β monoclonal 6E10 and Alexafluor 488 conjugates demonstrates minimal—although unavoidable—tissue disruption (right panel). Specificity of the immunostaining is indicated by the absence of A β signal in the contralateral site in animals sacrificed immediately after inoculation (left panel).

Figure 2A depicts the time-related clearance of monomeric and LMW oligomeric [¹²⁵I]A β 1-40 from brain interstitial fluid, estimated based on the radioactivity remaining in the whole brain at 5, 30, and 60 min post-injection compared to the total injected radioactivity. Brain efflux of monomeric A β 1-40 was fast, with ~25% of the peptide cleared in only 5 min and >60% cleared within 60 min. Retention of LMW oligomers was consistently higher, with only ~15% of the injected material eliminated in the first 5 min and <40% at 60 min. Comparison of brain clearance levels for monomeric vs. oligomeric forms of [¹²⁵I]A β 1-40 evaluated 60 min after

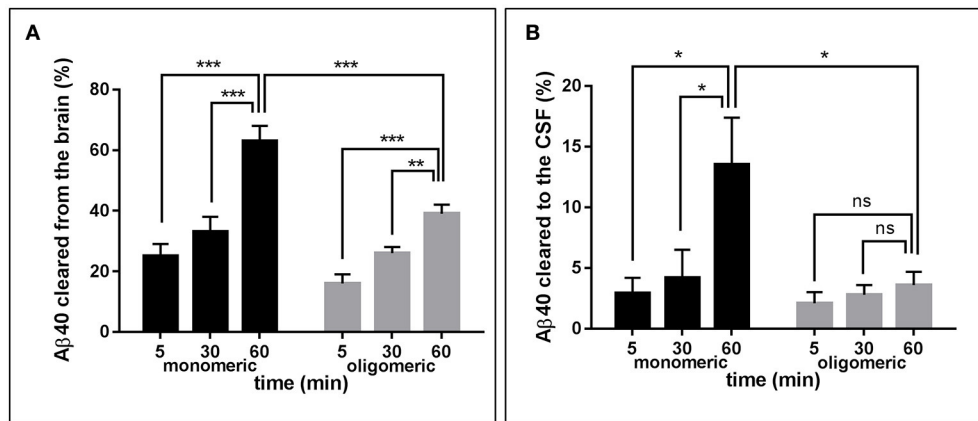


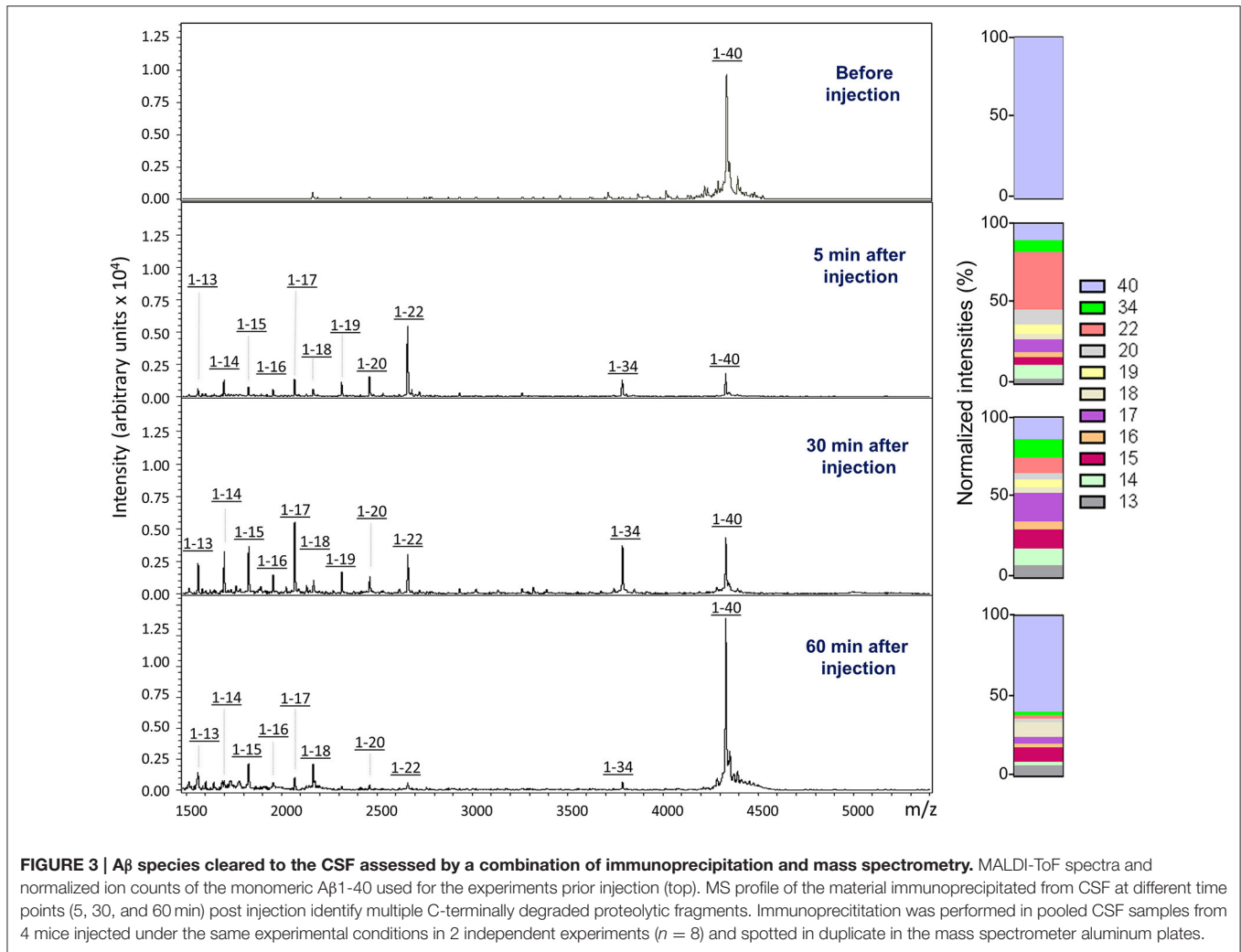
FIGURE 2 | Brain clearance of radiolabeled A β species. (A) Clearance of monomeric (black bars) and oligomeric (gray bars) [125 I]A β 1-40 species removed from the brain at three different time-points. **(B)** Monomeric (black bars) and oligomeric (gray bars) [125 I]A β 1-40 species cleared to the CSF evaluated at three different time-points. In all cases bars illustrate percentage cleared relative to total injected radioactivity; values represent mean \pm SD obtained from inoculation of 5–7 mice (ANOVA and Tukey *post-hoc* test; ns, not significant; * p < 0.05; ** p < 0.01; *** p < 0.001).

intra-cerebral injection clearly demonstrated that peptide oligomerization significantly increased brain retention (p < 0.001). Clearance from interstitial fluid to the CSF was evaluated by quantitating radioactivity in the CSF 5, 30, and 60 min post-A β intracerebral injection (**Figure 2B**). CSF was collected through a cisterna magna puncturing technique without blood contamination, as corroborated by dot blot analysis probed with antibodies immunoreacting with apolipoprotein-B and α 2-macroglobulin, blood proteins not present in the CSF (data not shown). Only a fraction of the material removed from brain reached the CSF in a time-dependent manner. In the case of monomeric A β 1-40, the levels cleared to the CSF increased from \sim 3% at 5 min to an average of 13% at 60 min. In contrast, LMW oligomeric A β 1-40 was cleared less efficiently, with only \sim 2% present in the CSF after 5 min, and \sim 4% at 60 min. Comparative evaluation of [125 I]-A β cleared to the CSF at 60 min indicates a statistically significant decrease of about 3-fold in oligomeric A β removal compared to the values obtained for the monomeric form of the peptide (p < 0.05) and in line with the results illustrated in **Figure 2A** for overall brain efflux.

In order to biochemically analyze the A β species cleared to the CSF, a targeted mass spectrometric analysis of A β was conducted on CSF collected from a parallel set of mice 5, 30, and 60 min after intra-cerebral injection of non-radiolabeled monomeric and oligomeric forms of A β 1-40. Immunoprecipitation of CSF samples with paramagnetic beads coated with monoclonal anti-A β 6E10 antibodies followed by MALDI-ToF mass spectrometry analysis revealed the presence of heterogeneous C-terminally truncated A β species in addition to full-length A β 1-40, suggestive of a fast enzymatic degradation by brain resident enzymes. **Figure 3** depicts the differential pattern exhibited by the intact injected peptide—a single peak with an experimental mass of 4329.1Da (top panel)—in comparison with the multiple degradation fragments retrieved in CSF at the different time-points (lower panels).

The relative intensity ratios between the intact peptide and each of the major proteolytically-generated fragments assessed at the different time points indicate that the CSF truncated A β species became comparatively less abundant with time while the peak pertaining to the intact peptide, a relatively minor component at 5 min, increased as the time after injection progressed and was the predominant form at 60 min (**Figure 3**). These differences in the CSF A β heterogeneity—highly dependent on the time of sample collection following the intra-cerebral A β injection—strongly suggest that C-terminally degraded A β fragments are cleared into and out of the CSF more efficiently than the full length peptide—likely reflecting their higher solubility and lower tendency to aggregate (Cabrera et al., unpublished)—and supporting the beneficial role for local catabolism in brain A β efflux. Whether a decreased ratio of A β -truncated fragments at longer time points after injection also reflects a preferential involvement of other A β -removal mechanisms including perivascular drainage, glymphatic pathway or meningeal lymphatic vessels, and/or simply results from the focal exhaustion of available local enzymes remain to be elucidated.

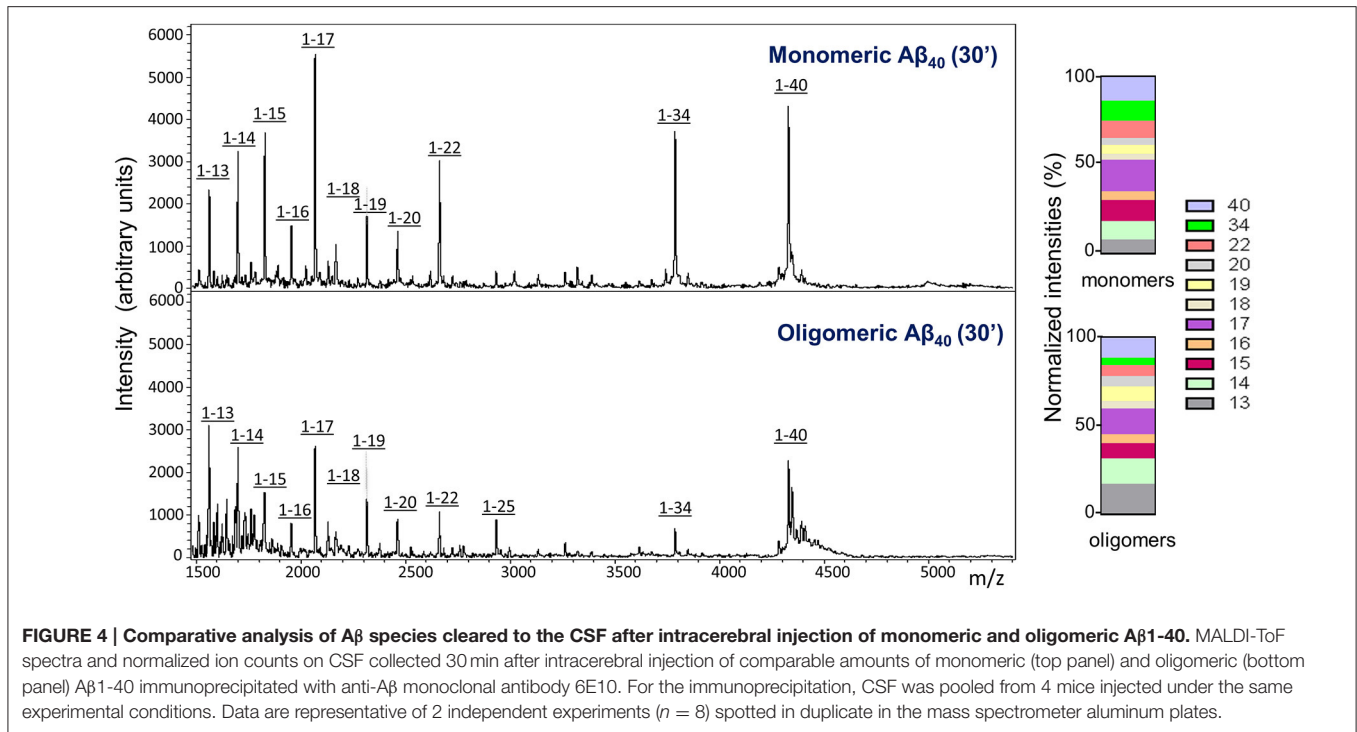
Similar to what was observed for the injected monomeric A β 1-40, analysis of CSF collected from mice injected with LMW oligomeric forms of the peptide displayed, in addition to the full length peptide, a heterogeneous collection of C-terminally truncated species (**Figure 4**). It should be noted that under the experimental conditions of the mass spectrometry assay, which render non-covalent binding unobservable (Woods et al., 1995), the amyloid molecules are detected at the molecular mass corresponding to the monomeric species, independent of their aggregation state, as we previously reported (Tomidokoro et al., 2010); therefore, the full-length peak is detected with the same experimental mass regardless the use of monomers or LMW oligomers in the experiments. Visual evaluation of the CSF A β species resulting from the inoculation of monomeric vs.



oligomeric A β 1-40 at 30 min post-injection (Figure 4, top and bottom panels, respectively) revealed a similar heterogeneity—full-length peptide coexisting with the same C-terminally degraded A β fragments—indicative that, irrespective of the aggregation status of the injected A β , the same peptide bonds were targeted for enzymatic degradation. Analysis of the relative intensity ratios corresponding to the intact peptide and to each of the major proteolytic fragments generated from the monomeric and the LMW oligomeric species reinforced the similarity of the proteolytic process (Figure 4, normalized intensities). While absolute signal intensity between samples in MALDI-ToF is not reliably quantitative, lower signal intensity for the cleared oligomeric injected forms are consistent with an indication that A β 1-40 full-length oligomers are not removed as efficiently to the CSF as the monomeric form, in agreement with results illustrated in Figure 2. The lower susceptibility of oligomeric injected forms of A β to enzymatic degradation suggested by the lower signal intensity of the C-terminally degraded derivatives—consistent with previously reported studies for most A β -degrading enzymes (Morelli et al., 2003; Haass and Selkoe, 2007; De Strooper,

2010)—may also account, at least in part, for the lower clearance rate observed in our experimental paradigm for oligomeric A β species shown in Figure 2.

Immunofluorescence confocal microscopy studies in brain tissues harvested 60 min following intracerebral injection of non-labeled A β 1-40 provided insight into the cellular mechanisms involved in A β uptake. Brain tissue sections were co-immunolabeled with antibodies recognizing specific cell types in conjunction with monoclonal anti-A β antibody 6E10 and colocalization of the respective signals evaluated at the site of the injection. The images described below were captured from the motor cortex adjacent to the injection site. Although the distance from the injection point varied among the different stainings, the images shown in Figure 5 were typically acquired within a 400 μ m range from the injection site. Figure 5A illustrates the localization of injected A β monomers to neuronal cells highlighted by neurotubulin staining consistent with recent reports demonstrating the capability of neurons to uptake ISF A β through receptor-mediated endocytosis by the low-density lipoprotein receptor-related protein 1 (LRP1; Kanekiyo et al.,



2013). A β was also present in the cerebral vasculature, as indicated by its co-localization with endothelial cells decorated by their reactivity with Factor VIII, suggestive of A β clearance across the BBB, a well study pathway for the removal of A β monomers (Shibata et al., 2000; Bell et al., 2007; Deane et al., 2009), or along the peri-/para-vascular tracks, as recently reported (Morris et al., 2016). The immunohistochemical approach also illustrates the co-localization of A β with astrocytes surrounding the vasculature—as indicated by the overlapping staining pattern of A β and the astrocytic marker GFAP—indicative of the recently described glymphatic pathway involving the aquaporin 4-mediated ISF bulk flow, as one of the mechanisms involved in the clearance of the injected A β . Analysis of the choroid plexus epithelium with antibodies recognizing E-cadherin indicates the presence of the intra-cerebrally injected A β also at this barrier structure and in accordance to the presence of degraded and intact A β in the CSF illustrated in **Figures 2–4**. Notably, A β reactivity was also associated with activated microglia within the choroid plexus, as highlighted by the overlapping signals of A β with the Iba-1 microglial marker. The immunoreactivity of 6E10 does not distinguish between monomeric and oligomeric forms of A β ; thus, we used this antibody in immunohistochemical studies to also assess the localization of the injected oligomeric preparations. As indicated above, the A β 1-40 oligomers used in the experiments remained stable during the 1 h window of the intra-cerebral injection procedure requiring an additional 24 h incubation to render protofibrillar structures (Fossati et al., 2010). **Figure 5B** illustrates the comparable overlapping of signals recognizing the injected LMW oligomeric A β with neuronal, endothelial, and astrocytic cells as well as within choroid plexus structures and associated activated microglia,

suggesting the involvement of comparable routes for the efflux of monomeric and LMW oligomeric A β counterparts.

DISCUSSION

Over the last decade increasing evidence indicates that one of the main mechanisms leading to brain A β accumulation and likely contributing to AD is a defective clearance of the protein from the brain, which affects the delicate balance between degree of A β production, dynamics of aggregation, and rate of brain efflux. Glial phagocytosis, local enzymatic degradation, efflux through the BBB, transport to the cerebrospinal fluid, peri- and para-vascular drainage along with the more recently described glymphatic system and meningeal lymphatic vessels are among the mechanisms under current investigation and with demonstrated participation in brain A β removal (Deane et al., 2004, 2008, 2009; Iliff et al., 2012; Morris et al., 2014, 2016; Bakker et al., 2016). Of all these pathways, clearance across the BBB is definitely the most studied and one of the most significant contributors to A β brain removal accounting for ~75% of the overall A β efflux in humans (Roberts et al., 2014). Once cleared to the blood stream and consistent to its very low and steady concentration in plasma, full-length A β has a very short half-life: ~3 min in mice, similar to that of insulin or oxytocin (Ghisso et al., 2004). Systemic A β catabolism occurs mainly in the liver through hepatocyte uptake and proteolytic degradation followed by secretion of the intact peptide and its proteolytically-derived fragments into the bile (Ghisso et al., 2001). Consistent with its short half-life in the periphery, the data presented herein unmistakably demonstrate that A β is also cleared from the brain at a fast rate and in a time-dependent manner. About

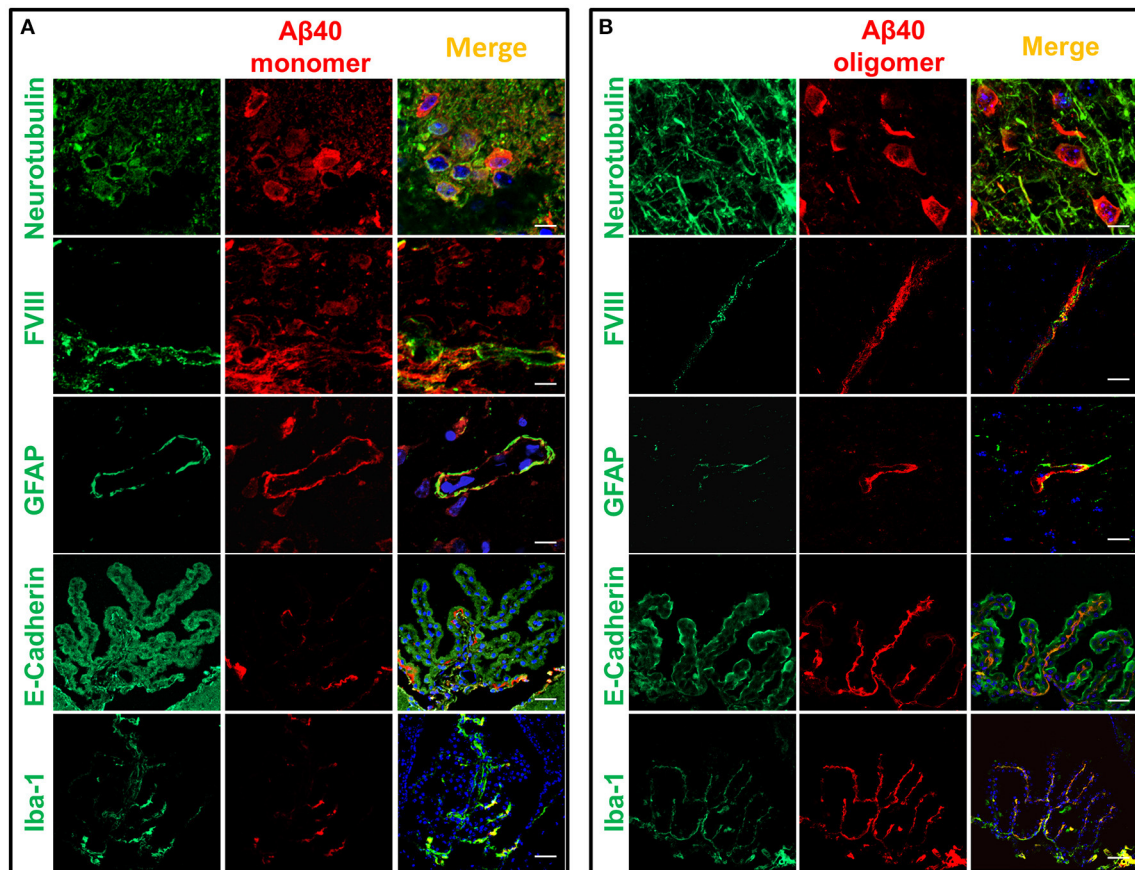


FIGURE 5 | Cellular localization of monomeric and oligomeric A β after intracerebral injection. Immunofluorescence microscopy analysis of serial frozen sections from brains of mice injected with monomeric (A) and oligomeric (B) A β illustrates the co-localization of A β (red signal) with cell specific markers of neurons (neurotubulin), endothelial cells (factor VIII), astrocytes (GFAP), choroid plexus epithelium (E-cadherin), and activated microglia (Iba-1), all in green fluorescence. Co-localization is highlighted by the yellow fluorescence in the merged images. Magnification: bar represents 10 μ m in the neurotubulin stainings, 20 μ m for the GFAP stainings, and 30 μ m in the case of the FVIII, E-cadherin and Iba-1 stainings.

25% of the monomeric peptide is cleared from the brain only 5 min after the intra-cerebral injection whereas the amount of A β eliminated increases steadily with time reaching levels of >60% at 60 min, the longest time-point evaluated in these studies. Notably, transport across the brain-CSF barrier plays a significant part in A β elimination as \sim 3% of intra-cerebrally injected 125 I-A β was found in CSF after 5 min, and 13% 1 h post-injection, consistent with previous reports—also employing fresh monomeric preparations of radiolabeled A β 1-40—which estimated A β clearance to the CSF in 10–15% (Shibata et al., 2000; Deane et al., 2003).

An impressive amount of research supports a pathogenic role for A β oligomerization in AD. Small intermediate soluble A β oligomers, similar to those employed in the current studies and primarily consisting of SDS-resistant dimers and trimers (Haass and Selkoe, 2007), have been implicated in synaptic dysfunction and neuronal loss leading to the progressive dementia associated in later stages of the disease with extensive A β pathology (Haass and Selkoe, 2007; Walsh and Selkoe, 2007; Li et al., 2009; Jin et al., 2011; Shankar et al., 2011). It is currently hypothesized

that accumulation of these A β oligomeric assemblies during the disease progression translates in increasingly severe and permanent changes in synaptic function. The 125 I-A β 1-40 clearance studies, showing higher brain retention and an \sim 3 - times lower efflux to the CSF for oligomeric A β in comparison to the values observed for the monomeric form, add another layer of pathogenic significance to these assemblies. Through a delayed brain removal, oligomeric species—once formed—have higher capability to exert their pathogenic activity. Furthermore, since the process of multimerization is concentration dependent, the persistence of oligomeric forms of A β within the brain is likely to exacerbate the assembly of higher molecular mass species and/or recruit soluble forms of A β into multimolecular species in a nucleation/seeding effect which is increasingly recognized as a significant contributor to the pathogenesis of neurodegenerative disorders (Kane et al., 2000; Meyer-Luehmann et al., 2006).

Targeted mass spectrometric analysis of the CSF collected at different time points after the post-intracerebral A β injections consistently demonstrated that A β is cleared to the CSF

not only as a full-length peptide but also in the form of numerous C-terminally truncated fragments, indicative of catabolic cleavage by A β -degrading brain resident enzymes. This enzymatic degradation takes place very fast, as evidenced by the presence of the A β degradation products after only 5 min post-injection. Comparative analysis of the A β catabolic footprints with the time of CSF collection elapsed after the intracerebral injection provides a clear indication of the preferential early removal of these C-terminally degraded fragments in comparison to the full-length A β 1-40 providing support for an important role of enzymatic degradation in the fast and efficient brain A β clearance. Along this line, the higher retention exhibited by A β oligomeric species may well relate not only to a decreased efficiency in the efflux of these species *per-se* but also to a lower susceptibility of these assemblies of being cleaved by brain resident enzymes, as evidenced in the current studies by the lower ratio of cleaved A β forms present in the CSF samples of animals intracerebrally injected with A β 1-40 oligomers. Indeed, the lower susceptibility of A β aggregated species to enzymatic cleavage has been previously documented—mostly in *in vitro* paradigms—not only for A β , but also for other amyloid molecules associated with different cerebral amyloidoses like the chromosome XIII dementias, as well as for systemic forms of the disease (Haass and Selkoe, 2007; Rostagno et al., 2007; De Strooper, 2010).

Enzyme-mediated clearance has received considerable attention during the last decade, and many of the multiple enzymes constituting the proteolytic machinery of the brain have shown potential to participate in A β catabolism, among them neprylisin, insulin degrading- and endothelin converting-enzymes, plasmin as well as matrix metalloproteases (Selkoe, 2001; Morelli et al., 2002; Wang et al., 2006; Miners et al., 2008; Saido and Leissring, 2012; Hernandez-Guillamon et al., 2015). Reduced levels and/or decreased catalytic activity of these A β -degrading enzymes as a result of age, genetic factors, and specific disease conditions have been proposed to affect A β accumulation, an issue well-documented in murine models in which gene deletion of different proteases translate into increased levels of A β deposition (Selkoe, 2001; Vardy et al., 2005; Wang et al., 2006). Evidence of a genetic association of these proteases with AD has only been reported for a few enzymes albeit no consensus exists to the moment with regard to the importance or reproducibility of these associations in the general AD population (De Strooper, 2010). Nevertheless, in spite of this elusive information, the relevance of these enzymatic processes for brain clearance is supported in part by the current studies which demonstrate the preferential elimination of truncated C-terminal species to the CSF as well as by previous reports highlighting the higher solubility and non-toxic characteristics of the resulting truncated species (Hernandez-Guillamon et al., 2015), features that point out to a beneficial role of A β enzymatic processing for AD pathogenesis. The heterogeneous CSF A β profile generated by enzymatic catabolism of injected A β 1-40 correlates well with the heterogeneity of A β species present in brain tissue and CSF biological samples. As illustrated in **Figure 6** for human CSF in normal individuals, A β heterogeneity extends far beyond the classic A β 1-40/A β 1-42 dichotomy and encompasses numerous A β truncated forms, primarily cleaved at

the C-terminus in CSF, and both at the C- and N-terminal ends in brain specimens (Portelius et al., 2006; Tomidokoro et al., 2010).

Immunofluorescence confocal studies performed following intrahippocampal A β inoculation demonstrated localization of the peptide with neurons, at microvessels in association with endothelial and astrocytic components, as well as at the chroid plexus epithelium. This peptide localization, which was also visualized in the case of the inoculation of A β oligomers, highlights different routes of cellular uptake, and clearance. Internalization of A β by neurons can be clearly observed in the experiments described herein, highlighting an important route of cellular uptake, consistent with recent reports describing the capability of neurons to uptake A β from interstitial fluid (Kanekiyo et al., 2013). Indeed, although cellular uptake by astrocytes, microglia, and vascular smooth muscle cells have been shown to participate in A β elimination (Wyss-Coray et al., 2001, 2003; Koistinaho et al., 2004; Kanekiyo et al., 2012) neuronal uptake has received much less attention in spite of the high vulnerability of these cells to A β -mediated toxicity. Recent data indicate that neuronal LRP-1—a known endocytic receptor for multiple ligands, including A β (Kanekiyo et al., 2013) and predominantly expressed in the postsynaptic region and the cell body (Bu et al., 1994; May et al., 2004)—mediates neuronal A β uptake and subsequent degradation primarily by lysosome-dependent pathways (Kanekiyo et al., 2013).

Immunofluorescence studies post-injection also demonstrated the presence of A β in the cerebral microvasculature, as indicated by colocalization of the peptide with endothelial cells highlighted by their reactivity with Factor VIII, suggestive of A β clearance across the BBB, a well-studied pathway for the removal of A β monomers (Shibata et al., 2000; Deane et al., 2009). The BBB, responsible for the overall brain and CNS maintenance, is a highly specialized structure which maintains neuronal homeostasis by regulating the flux of electrolytes, metabolites, toxic molecules, and circulating immune cells between the blood stream and the brain parenchyma (Abbott et al., 2010; Di Marco et al., 2015). It is primarily formed by basement membranes and capillary endothelial cells which adhere to one another through tight and adherens junctions, albeit astrocytes, and pericytes—topographically located in close contact with the endothelium (Allt and Lawrenson, 2001; Armulik et al., 2005)—are essential contributors to the BBB phenotype. Through this permeability barrier, the brain efficiently protects itself from harmful compounds and precisely regulates its microenvironment (Cecchelli et al., 2007). Small lipid-soluble molecules, such as oxygen and carbon-dioxide can diffuse freely across the BBB, whereas the exchange of larger molecules occurs by either active transport through the cell body (transcytosis) or by paracellular transport (Zlokovic, 2011; Lyros et al., 2014; Di Marco et al., 2015). As macromolecules, A β peptides cross the BBB by active transport. The influx from the blood to the brain is mediated by the luminal residing receptor for advanced glycation end-products (RAGE; Deane et al., 2003) whereas when complexed to its carrier protein clusterin (apolipoprotein J) within the high density lipoproteins, A β is transported into the brain through

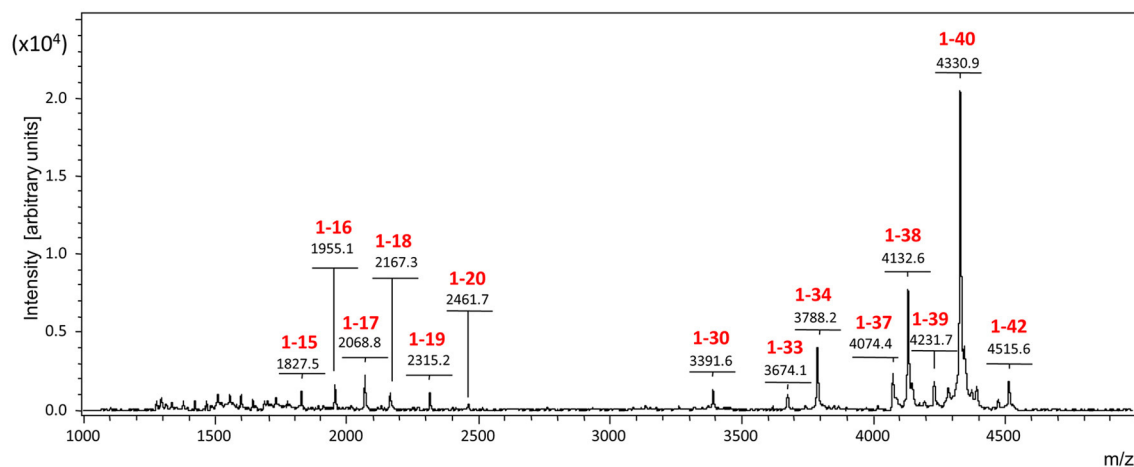


FIGURE 6 | The A β -peptidome in normal human CSF. The spectrum highlights the C-terminal heterogeneity of the A β species present in the CSF, extending far beyond the classic A β 1-42/A β 1-40 dichotomy and reflecting the proteolytic action of local resident enzymes.

the clusterin receptor megalin (gp330 or LRP-2; Zlokovic et al., 1996). LRP-1, predominantly localized on the abluminal side of the cerebral endothelium (Shibata et al., 2000) as well as P-glycoprotein (P-gp)—an ATP-dependent efflux pump with broad specificity also abundant in the brain capillary endothelium—are the main receptors responsible for A β efflux from brain-to-blood (Shibata et al., 2000; Deane et al., 2003; Candela et al., 2010; Di Marco et al., 2015). More recently, a novel protein in brain endothelial monolayers has also been shown to play a role in the brain clearance of A β . This protein, known as PICALM (phosphatidylinositol binding clathrin assembly protein), is abundantly expressed in brain capillary endothelium (Baig et al., 2010; Parikh et al., 2014), and has been linked to AD in recent genome wide association studies (Harold et al., 2009; Tanzi, 2012; Lambert et al., 2013). Through the PICALM/clathrin-dependent internalization of A β bound to LRP-1, this newly reported pathway also contributes to A β endothelial transcytosis and brain clearance.

Endothelial cells lining the cerebral microvasculature are the primary cellular element forming the BBB albeit pericytes and astrocytes are essential contributors to the physiological function of this barrier (Zlokovic et al., 1996; Deane et al., 2008). In particular astrocytes, which are in close anatomical proximity to the brain microvasculature as their endfeet form a lacework surrounding the outer surface of the endothelium (Abbott, 2002), are crucial for the development of the specialized BBB phenotype. This cross-talk with the brain endothelium is now known to involve complex cell-cell exchange of chemical signals responsible for the induction of the specific features and the modulation of the cellular physiology of the BBB. The immunohistochemical approach in the current work demonstrates colocalization of A β with astrocytes surrounding the microvasculature, as indicated by the overlapping staining pattern of A β and the astrocytic marker GFAP suggestive of a participation of these cells in A β clearance at the BBB. Indeed, astrocytes have been shown as capable of binding and

internalizing A β in *in vitro* systems using live-cell imaging methodologies although the precise mechanisms involved— notably significantly less efficient for the clearing of A β fibrillar assemblies—remain to be elucidated (Nielsen et al., 2010).

Analysis of the choroid plexus epithelium by immunofluorescence studies indicates the presence of the intracerebrally injected A β at this barrier structure. Notably, A β reactivity was also associated with activated microglia within the choroid plexus as highlighted by the overlapping signals of A β with the Iba-1 microglial marker in association with this epithelial barrier. The participation of microglia, the brain's tissue macrophages and the primary immune effectors within the CNS, in the clearance of A β has been previously reported (Mandrekar et al., 2009; Nielsen et al., 2010). These highly dynamic cells, responsible for normal tissue maintenance, continually police the brain extracellular environment taking up soluble nutrients (Nimmerjahn et al., 2005). Microglia uptake A β peptides through macropynocytic mechanisms, rapidly trafficking the peptides into late endolysosomal compartments for subsequent degradation, actively participating in the maintenance of A β homeostasis (Mandrekar et al., 2009). The present data provide support for the relevance of microglia-mediated uptake at the level of the choroid plexus structures. The bulk flow of ISF into the CSF through these specialized epithelium—which notably shares many of the receptors involved in BBB clearance, including LRP-1 and P-gp (Dietrich et al., 2008; Behl et al., 2009)—has been reported to contribute 10–15% of brain A β clearance, in agreement with the current report using radiolabeled A β 1-40 and supported by the localization of A β to the epithelial choroid barrier.

Notably, the role of CSF in clearing A β along with waste and toxic elements from the brain have become increasingly more complex in the last few years with new evidence highlighting the relevance of peri- and para-vascular intracerebral transport routes (Bakker et al., 2016), the description of the glymphatic system (Iliff et al., 2012), and the discovery of meningeal

lymphatic vessels (Aspelund et al., 2015; Louveau et al., 2015), the latter a potential clearance route yet to be studied. The ISF bulk-flow clearance removes ISF—which contains A β as well as other solutes and waste products—from the interstitium into the CSF and perivascular space aided by the force resulting from vessel pulsations. Evidence of drainage of ISF along perivascular pathways, driving proteins, and fluid along blood vessel walls were demonstrated early on through studies focusing on the elimination of tracers injected into the brain parenchyma (Bakker et al., 2016). These tracers diffuse through extracellular spaces of the brain along basement membranes of capillaries to drain out of the brain along basement membranes in the tunica media of arteries and into the cervical lymph nodes (Weller et al., 2008). Adding to the complexity of ISF/CSF intracerebral circulation, a recycle of CSF through the brain ISF has recently been described (Iliff et al., 2012). This pathway, known as glymphatic transport system, is dependent on the expression of the water channel protein aquaporin 4 by astrocytes and on efficient arterial pulsations. Intra-cisternally injected A β has been shown to be transported along this route, a mechanism significantly reduced in aquaporin 4 knock-out mice. Although the relative contributions of each of these systems to overall clearance remains to be elucidated, these mechanisms synergistically contribute to the elimination of extracellular A β from the brain and alterations in any of these closely interlinked mechanisms are likely to contribute to A β accumulation. The intricate circulation of CSF is likely to influence the clearance of other pathogenic protein in AD, the intracellular neuronal protein Tau, which although not the focus of the current studies has demonstrated relevance for the disease pathogenesis. Indeed, Tau clearance is significantly less well-studied than A β clearance, but it also seems to be less complex. Transporters specifically mediating the passage of Tau through the BBB have not been identified, which seem to suggest that the protein does not undergo clearance through the BBB under normal physiological conditions. Instead, tau is thought to be cleared from the brain primarily by degradation, by ISF bulk flow into the CSF, and by CSF absorption (Chesser et al., 2013; Iliff et al., 2014; Ueno et al., 2016). As it is the case of A β and brain metabolic/waste products, CSF absorption into the blood at the arachnoid villi as well its reentry into the ISF by paravascular mechanisms and aquaporin mediated circulation within the glymphatic system seem to contribute to Tau clearance (Iliff et al., 2014; Ueno et al., 2016).

It is interesting to mention that most—if not all—of the physiological mechanisms currently thought to participate in brain clearance are severely affected by aging, feature that may correlate with the age-associated characteristics of AD. In this sense, the stiffening of cerebral arteries with age, lead to reduced amplitude of pulsations and to a decreased efficacy in perivascular and ISF drainage pathways, deficiencies accentuated when vessels are compromised by amyloid deposits in cerebral

amyloid angiopathy which further impede the drainage of soluble A β (Weller et al., 2008; Hawkes et al., 2011). A significant decrease in CSF production and sluggish flow is also observed in aging. This dwindling CSF dynamics, which greatly harms the interstitial environment of neurons, is aggravated in AD in which the expanding CSF space reduces CSF turnover rate further compromising the sink action to clear harmful metabolites, among them A β (Johanson et al., 2008; Zeng et al., 2012), an effect also impacted by the age-associated decreased functionality of the choroid plexus-CSF system (Lustbader et al., 2004; Kheterpal et al., 2006; Behl et al., 2009), as well as by the age-related decrease in the levels of the A β efflux transporters both at the choroid plexus and the BBB. All these changes individually or concurrently have undisputed relevance for brain clearance and a complete understanding of these mechanisms may provide new insights leading to the delay or even the prevention of the onset of AD.

Overall, the data presented herein, through intracerebral injection of well-defined monomeric and low molecular mass oligomeric A β assemblies in CB57BL6 mice, highlight the fast physiologic brain elimination of the peptide providing a clear indication of the detrimental role of oligomerization for brain A β efflux. The findings clearly demonstrate that physiologic clearance of brain interstitial A β follows local and systemic paths and that in addition to the blood-brain barrier, local enzymatic degradation, and the bulk flow transport through the choroid plexus into the CSF play a crucial role. The complexity of the interlinked A β brain removal mechanisms, encompassing different cell populations and in some cases overlapping cellular pathways explain to a certain point the lack of success of therapeutic strategies targeting individual components of this multiplex cascade. Our studies highlighting the diverse factors influencing brain clearance and the various routes of elimination open up new research opportunities for the understanding of altered mechanisms triggering AD pathology and for the potential design of combined therapeutic strategies.

AUTHOR CONTRIBUTIONS

JG designed research; FM and PG performed experimental work; AR and JG analyzed data, interpreted results, and wrote the paper; SB performed MS analysis; GS provided expertise in radioactivity assessment and quality control; TN analyzed MS studies; FM, PG, and TN edited the manuscript.

ACKNOWLEDGMENTS

This work was supported in part by the National Institutes of Health (grant numbers AG030539, AG044817, AG051266, and NS050276), a CTSI fellowship from NIH UL1TR001445, the Alzheimer's Association, and the BrightFocus Foundation.

REFERENCES

Abbott, N. J. (2002). Astrocyte-endothelial interactions and blood-brain barrier permeability. *J. Anat.* 200, 629–638. doi: 10.1046/j.1469-7580.2002.00064.x

Abbott, N. J., Patabendige, A. A., Dolman, E. M., Yusof, S. R., and Begley, D. J. (2010). Structure and function of the blood-brain barrier. *Neurobiol. Dis.* 37, 13–25. doi: 10.1016/j.nbd.2009.07.030

- Allt, G., and Lawrenson, J. G. (2001). Pericytes: cell biology and pathology. *Cells Tissues Organs* 169, 1–11. doi: 10.1159/000047855
- Armulik, A., Abramsson, A., and Betsholtz, C. (2005). Endothelial/pericyte interactions. *Circ. Res.* 97, 512–523. doi: 10.1161/01.RES.0000182903.16652.d7
- Aspelund, A., Antila, S., Proulx, S. T., Karlsson, T. V., Karaman, S., Detmar, M., et al. (2015). A dural lymphatic vascular system that drains brain interstitial fluid and macromolecules. *J. Exp. Med.* 212, 991–999. doi: 10.1084/jem.20142290
- Bading, J., Yamada, S., Mackic, J. B., Kirkman, L., Miller, C. A., Calero, M., et al. (2002). Brain clearance of Alzheimer's amyloid- β 40 in the squirrel monkey: a SPECT study in a primate model of cerebral amyloid angiopathy. *J. Drug Target* 10, 359–368. doi: 10.1080/10611860290031831
- Baig, S., Joseph, S. A., Tayler, H., Abraham, R., Owen, M. J., Williams, J., et al. (2010). Distribution and expression of picalm in Alzheimer disease. *J. Neuropathol. Exp. Neurol.* 69, 1071–1077. doi: 10.1097/NEN.0b013e3181f52e01
- Bakker, E. N., Bacskai, B. J., Arbel-Ornath, M., Aldea, R., Bedussi, B., Morris, A. W., et al. (2016). Lymphatic clearance of the brain: perivascular, paravascular and significance for neurodegenerative diseases. *Cell. Mol. Neurobiol.* 36, 181–194. doi: 10.1007/s10571-015-0273-8
- Behl, M., Zhang, Y., Monnot, A. D., Jiang, W., and Zheng, W. (2009). Increased b-amyloid levels in the choroid plexus follow lead exposure and the involvement of low-density lipoprotein receptor protein-1. *Toxicol. Appl. Pharmacol.* 240, 245–254. doi: 10.1016/j.taap.2009.05.024
- Bell, R. D., Sagare, A. P., Friedman, A. E., Bedi, G. S., Holtzman, D. M., Deane, R., et al. (2007). Transport pathways for clearance of human Alzheimer's amyloid β -peptide and apolipoproteins E and J in the mouse central nervous system. *J. Cereb. Blood Flow Metab.* 27, 909–918. doi: 10.1038/sj.jcbfm.9600419
- Bu, G., Maksymovitch, E. A., Nerbonne, J. M., and Schwartz, A. L. (1994). Expression and function of the low density lipoprotein receptor-related protein (LRP) in mammalian central neurons. *J. Biol. Chem.* 269, 18521–18528.
- Busciglio, J., Pelsman, A., Wong, C., Pigino, G., Yuan, M., Mori, H., et al. (2002). Altered metabolism of the amyloid β precursor protein is associated with mitochondrial dysfunction in Down's syndrome. *Neuron* 33, 677–688. doi: 10.1016/S0896-6273(02)00604-9
- Calero, M., and Ghiso, J. (2005). "Radioiodination of A β peptides," in *Amyloid Proteins: Methods and Protocols*, eds E. M. Sigurdsson (Totowa, NJ: Humana Press), 325–348.
- Candela, P., Gosselet, F., Saint-Pol, J., Sevin, E., Boucau, M. C., Boulanger, E., et al. (2010). Apical-to-basolateral transport of amyloid- β peptides through blood-brain barrier cells is mediated by the receptor for advanced glycation end-products and is restricted by P-glycoprotein. *J. Alzheimers. Dis.* 22, 849–859. doi: 10.3233/JAD-2010-100462
- Caughey, B., and Lansbury, P. T. (2003). Protofibrils, pores, fibrils, and neurodegeneration: separating the responsible protein aggregates from the innocent bystanders. *Annu. Rev. Neurosci.* 26, 267–298. doi: 10.1146/annurev.neuro.26.010302.081142
- Cecchelli, R., Berezowski, V., Lundquist, S., Culot, M., Renftel, M., Dehouck, M. P., et al. (2007). Modelling of the blood-brain barrier in drug discovery and development. *Nat. Rev. Drug Discov.* 6, 650–661. doi: 10.1038/nrd2368
- Chesser, A. S., Pritchard, S. M., and Johnson, G. V. (2013). Tau clearance mechanisms and their possible role in the pathogenesis of Alzheimer disease. *Front. Neurol.* 4:122. doi: 10.3389/fneur.2013.00122
- Deane, R., Bell, R. D., Sagare, A., and Zlokovic, B. (2009). Clearance of amyloid- β peptide across the blood-brain barrier: implication for therapies in Alzheimer's disease. *CNS Neurol. Dis. Drug Targets* 8, 16–30. doi: 10.2174/187152709787601867
- Deane, R., Sagare, A., and Zlokovic, B. V. (2008). The role of the cell surface LRP and soluble LRP in blood-brain barrier Ab clearance in Alzheimer's disease. *Curr. Pharmac. Des.* 14, 1601–1605. doi: 10.2174/138161208784705487
- Deane, R., Wu, Z., and Zlokovic, B. (2004). RAGE (Yin) versus LRP (yang) balance regulates Alzheimer Amyloid b-peptide clearance through transport across the blood-brain-barrier. *Stroke* 35, 2628–2631. doi: 10.1161/01.STR.0000143452.85382.d1
- Deane, R., Du Yan, S., Subramanian, R. K., LaEue, B., Jovanovic, S., Hogg, E., et al. (2003). RAGE mediates amyloid- β peptide transport across the blood-brain barrier and accumulation on the brain. *Nat. Med.* 9, 907–913. doi: 10.1038/nm890
- De Strooper, B. (2010). Proteases and proteolysis in Alzheimer disease: a multifactorial view on the disease process. *Physiol. Rev.* 90, 465–494. doi: 10.1152/physrev.00023.2009
- Devi, L., and Ohno, M. (2012). Mitochondrial dysfunction and accumulation of the β -secretase-cleaved C-terminal fragment of APP in Alzheimer's disease transgenic mice. *Neurobiol. Dis.* 45, 417–424. doi: 10.1016/j.nbd.2011.09.001
- Dietrich, M. O., Spuch, C., Antequera, D., Rodal, I., de Yébenes, J. G., Molina, J. A., et al. (2008). Megalin mediates the transport of leptin across the blood-CSF barrier. *Neurobiol. Aging* 26, 902–912. doi: 10.1016/j.neurobiolaging.2007.01.008
- Di Marco, L. Y., Venneri, A., Farkas, E., Evans, P. C., Marzo, A., and Frangi, A. F. (2015). Vascular dysfunction in the pathogenesis of Alzheimer's disease - A review of endothelium-mediated mechanisms and ensuing vicious circles. *Neurobiol. Dis.* 82, 593–606. doi: 10.1016/j.nbd.2015.08.014
- Fossati, S., Cam, J., Meyerson, J., Mezhericher, E., Romero, I. A., Couraud, P.-O., et al. (2010). Differential activation of mitochondrial apoptotic pathways by vasculotropic amyloid- β variants in cells composing the cerebral vessel walls. *FASEB J.* 24, 229–241. doi: 10.1096/fj.09-139584
- Fossati, S., Giannoni, P., Solesio, M. E., Cocklin, S. L., Cabrera, E., Ghiso, J., et al. (2016). The carbonic anhydrase inhibitor methazolamide prevents amyloid β -induced mitochondrial dysfunction and caspase activation protecting neuronal and glial cells *in vitro* and in the mouse brain. *Neurobiol. Dis.* 86 29–40. doi: 10.1016/j.nbd.2015.11.006
- Galvan, V., and Hart, M. J. (2016). Vascular mTOR-dependent mechanisms linking the control of aging to Alzheimer's disease. *Biochim. Biophys. Acta* 1862, 992–1007. doi: 10.1016/j.bbdis.2015.11.010
- Ghersic-Egea, J. F., Gorevic, P., Ghiso, J., Frangione, B., Patlak, C. S., and Fenstermacher, J. (1996). Fate of cerebrospinal fluid-borne amyloid b-peptide: rapid clearance into blood and appreciable accumulation by cerebral arteries. *J. Neurochem.* 67, 880–883. doi: 10.1046/j.1471-4159.1996.67020880.x
- Ghiso, J., and Frangione, B. (2002). Amyloidosis and Alzheimer's disease. *Adv. Drug Delivery Rev.* 54, 1539–1551. doi: 10.1016/S0169-409X(02)00149-7
- Ghiso, J., Holton, J., Miravalle, L., Calero, M., Lashley, T., Vidal, R., et al. (2001). Systemic amyloid deposits in Familial British Dementia. *J. Biol. Chem.* 276, 43909–43914. doi: 10.1074/jbc.M105956200
- Ghiso, J., Shayo, M., Calero, M., Ng, D., Tomidokoro, Y., Gandy, S. E., et al. (2004). Systemic catabolism of Alzheimer's A β 40 and A β 42. *J. Biol. Chem.* 279, 45897–45908. doi: 10.1074/jbc.M407668200
- Haass, C., and Selkoe, D. J. (2007). Soluble protein oligomers in neurodegeneration: lessons from the Alzheimer's amyloid β -peptide. *Nat. Rev. Mol. Cell Biol.* 8, 101–112. doi: 10.1038/nrm2101
- Harold, D., Abraham, R., Hollingworth, P., Sims, R., Gerrish, A., Hamshere, M. L., et al. (2009). Genome-wide association study identifies variants at CLU and PICALM associated with Alzheimer's disease. *Nat. Genet.* 41, 1088–1093. doi: 10.1038/ng.440
- Hawkes, C. A., Härtig, W., Kacza, J., Schliebs, R., Weller, R. O., Nicoll, J. A., et al. (2011). Perivascular drainage of solutes is impaired in the ageing mouse brain and in the presence of cerebral amyloid angiopathy. *Acta Neuropathol.* 121, 431–443. doi: 10.1007/s00401-011-0801-7
- Hernandez-Guillamon, M., Mawhirt, S., Blais, S., Montaner, J., Neubert, T. A., Rostagno, A., et al. (2015). Sequential amyloid- β degradation by the matrix metalloproteases MMP-2 and MMP-9. *J. Biol. Chem.* 290, 15078–15091. doi: 10.1074/jbc.M114.610931
- Holtzman, D. M., Morris, J. C., and Goate, A. M. (2011). Alzheimer's disease: the challenge of the second century. *Sci. Transl. Med.* 3:77sr1. doi: 10.1126/scitranslmed.3002369
- Illif, J. J., Chen, M. J., Plog, B. A., Zeppenfeld, D. M., Soltero, M., Yang, L., et al. (2014). Impairment of glymphatic pathway function promotes tau pathology after traumatic brain injury. *J. Neurosci.* 34, 16180–16193. doi: 10.1523/JNEUROSCI.3020-14.2014
- Illif, J. J., Wang, M., Liao, Y., Plogg, B. A., Peng, W., Gundersen, G. A., et al. (2012). A paravascular pathway facilitates CSF flow through the brain parenchyma and the clearance of interstitial solutes, including amyloid β . *Sci. Transl. Med.* 4:147ra111. doi: 10.1126/scitranslmed.3003748
- Jin, M., Shepardson, N., Yang, T., Chen, G., Walsh, D., and Selkoe, D. J. (2011). Soluble amyloid β -protein dimers isolated from Alzheimer cortex directly induce Tau hyperphosphorylation and neuritic degeneration. *Proc. Natl. Acad. Sci. U.S.A.* 108, 5819–5824. doi: 10.1073/pnas.1017033108

- Johanson, C. E., Duncan, J. A., Klinge, P. M., Brinker, T., Stopa, E. G., and Silverberg, G. D. (2008). Multiplicity of cerebrospinal fluid functions: new challenges in health and disease. *Cerebrospinal Fluid Res.* 5:10 doi: 10.1186/1743-8454-5-10
- Jungbauer, L. M., Yua, C., Laxtona, K. J., and LaDu, M. J. (2009). Preparation of fluorescently-labeled amyloid- β peptide assemblies: the effect of fluorophore conjugation on structure and function. *J. Mol. Recognit.* 22, 403–413. doi: 10.1002/jmr.948
- Kane, M. D., Lipinski, W. J., Callahan, M. J., Bian, F., Durham, R. A., Schwarz, R. D., et al. (2000). Evidence for seeding of β -amyloid by intracerebral infusion of Alzheimer brain extracts in β -amyloid precursor protein-transgenic mice. *J. Neurosci.* 20, 3606–3611.
- Kanekiyo, T., Cirrito, J. R., Liu, C. C., Shinohara, M., Li, J., Schuler, D. R., et al. (2013). Neuronal clearance of amyloid- β by endocytic receptor LRP1. *J. Neurosci.* 33, 19276–19283. doi: 10.1523/JNEUROSCI.3487-13.2013
- Kanekiyo, T., Liu, C. C., Shinohara, M., Li, J., and Bu, G. (2012). LRP1 in brain vascular smooth muscle cells mediates local clearance of Alzheimer's amyloid- β . *J. Neurosci.* 32, 16458–16465. doi: 10.1523/JNEUROSCI.3987-12.2012
- Kang, J., Lemaire, H. G., Unterbeck, A., Salbaum, J. M., Masters, C. L., Grzeschik, K. H., et al. (1987). The precursor of Alzheimer's disease amyloid A4 protein resembles a cell-surface receptor. *Nature* 325, 733–736. doi: 10.1038/325733a0
- Kheterpal, I., Chen, M., Cook, K. D., and Wetzel, R. (2006). Structural differences in Abeta amyloid protofibrils and fibrils mapped by hydrogen exchange -Mass spectrometry with on-line proteolytic fragmentation. *J. Mol. Biol.* 361, 785–795. doi: 10.1016/j.jmb.2006.06.066
- Koistinaho, M., Lin, S., Wu, X., Esterman, M., Koger, D., Hanson, J., et al. (2004). Apolipoprotein E promotes astrocyte colocalization and degradation of deposited amyloid- β peptides. *Nat. Med.* 10, 719–726. doi: 10.1038/nm1058
- Kuo, Y. M., Emmerling, M. R., Vigo-Pelfrey, C., Kasunic, T. C., Kirkpatrick, J. B., Murdoch, G. H., et al. (1996). Water-soluble Abeta (N-40, N-42) oligomers in normal and Alzheimer disease brains. *J. Biol. Chem.* 271, 4077–4081. doi: 10.1074/jbc.271.8.4077
- Lambert, J. C., Ibrahim-Verbaas, C. A., Harold, D., Naj, A. C., Sims, R., Bellenguez, C., et al. (2013). Meta-analysis of 74,046 individuals identifies 11 new susceptibility loci for Alzheimer's disease. *Nat. Genet.* 45, 1452–1458. doi: 10.1038/ng.2802
- Li, S., Hong, S., Shepardson, N. E., Walsh, D. M., Shankar, G. M., and Selkoe, D. (2009). Soluble oligomers of amyloid β protein facilitate hippocampal long-term depression by disrupting neuronal glutamate uptake. *Neuron* 62, 788–801. doi: 10.1016/j.neuron.2009.05.012
- Liu, L., and Duff, K. (2008). A technique for serial collection of cerebrospinal fluid from the Cisterna Magna in Mouse. *J. Vis. Exp.* pii: 960. doi: 10.3791/960
- Louveau, A., Smirnov, I., Keyes, T. J., Eccles, J. D., Rouhani, S. J., Peske, J. D., et al. (2015). Structural and functional features of central nervous system lymphatic vessels. *Nature* 523, 337–341. doi: 10.1038/nature14432
- Lue, L. F., Kuo, Y. M., Roher, A. E., Brachova, L., Shen, Y., Sue, L., et al. (1999). Soluble amyloid β concentration is a predictor of synaptic change in Alzheimer's disease. *Am. J. Pathol.* 155, 853–862. doi: 10.1016/S0002-9440(10)65184-X
- Lustbader, J. W., Cirilli, M., Lin, C., Xu, H. W., Takuma, K., Wang, N., et al. (2004). ABAD directly links Abeta to mitochondrial toxicity in Alzheimer's disease. *Science* 304, 448–452. doi: 10.1126/science.1091230
- Lyros, E., Bakogiannis, C., Liu, Y., and Fassbender, K. (2014). Molecular links between endothelial dysfunction and neurodegeneration in Alzheimer's disease. *Curr. Alzheimer Res.* 11, 18–26. doi: 10.2174/1567205010666131119235254
- Mackic, J. B., Stins, M., McComb, J. G., Calero, M., Ghiso, J., Kim, K. S., et al. (1998). Human blood-brain barrier receptors for Alzheimer's amyloid- β 1-40. Asymmetrical binding, endocytosis, and transcytosis at the apical side of brain microvascular endothelial cell monolayer. *J. Clin. Invest.* 102, 734–743. doi: 10.1172/JCI2029
- Mandrekar, S., Jiang, Q., Lee, C. Y., Koenigsnecht-Talboo, J., Holtzman, D. M., and Landreth, G. E. (2009). Microglia mediate the clearance of soluble Abeta through fluid phase macropinocytosis. *J. Neurosci.* 29, 4252–4262. doi: 10.1523/JNEUROSCI.5572-08.2009
- Martel, C., Mackic, J. B., Matsubara, E., Governale, S., Miguel, C., Miao, W., et al. (1997). Isoform-specific effects of apolipoproteins E2, E3, and E4 on cerebral capillary sequestration and blood-brain barrier transport of circulating Alzheimer's amyloid β . *J. Neurochem.* 69, 1995–2004. doi: 10.1046/j.1471-4159.1997.69051995.x
- Masters, C. L., Multhaup, G., Sims, G., Pottgiesser, J., Martins, R. N., and Beyreuther, K. (1985a). Neuronal origin of cerebral amyloid: neurofibrillary tangles of Alzheimer's disease contain the same protein as the amyloid of plaque cores and blood vessels. *EMBO J.* 4, 2757–2763.
- Masters, C. L., Simms, G., Weinman, N. A., Multhaup, G., McDonald, B. L., and Beyreuther, K. (1985b). Amyloid plaque core protein in Alzheimer disease and Down syndrome. *Proc. Natl. Acad. Sci. U.S.A.* 82, 4245–4249. doi: 10.1073/pnas.82.12.4245
- Mattson, M. P. (2004). Pathways towards and away from Alzheimer's disease. *Nature* 430, 631–639. doi: 10.1038/nature02621
- Mawuenyega, K. G., Sigurdson, W., Ovod, V., Munsell, L., Kastan, T., Morris, J. C., et al. (2010). Decreased clearance of CNS β -amyloid in Alzheimer's disease. *Science* 330, 1774. doi: 10.1126/science.1197623
- May, P., Rohlmann, A., Bock, H. H., Zurhove, K., Marth, J. D., Schomburg, E. D., et al. (2004). Neuronal LRP1 functionally associates with postsynaptic proteins and is required for normal motor function in mice. *Mol. Cell Biol.* 24, 8872–8883. doi: 10.1128/MCB.24.20.8872-8883.2004
- McLean, C. A., Cherny, R. A., Fraser, F. W., Fuller, S. J., Smith, M. J., Beyreuther, K., et al. (1999). Soluble pool of Abeta amyloid as a determinant of severity of neurodegeneration in Alzheimer's disease. *Ann. Neurol.* 46, 860–866.
- Meyer-Luehmman, M., Coomaraswamy, J., Bolmont, T., Kaeser, P. S., Schaefer, C., Kilger, E., et al. (2006). Exogenous induction of cerebral β -amyloidogenesis is governed by agent and host. *Science* 313, 1781–1784. doi: 10.1126/science.1131864
- Miners, J. S., Baig, S., Palmer, J., Palmer, L. E., Kehoe, P. G., and Love, S. (2008). A β -degrading enzymes in Alzheimer's disease. *Brain Pathol.* 18, 240–252. doi: 10.1111/j.1750-3639.2008.00132.x
- Morelli, L., Llovera, R., Gonzalez, S. A., Affranchino, J. L., Prelli, F., Frangione, B., et al. (2003). Differential degradation of A β genetic variants associated with hereditary dementia or stroke by Insulin-degraded enzyme (IDE). *J. Biol. Chem.* 278, 23221–23226. doi: 10.1074/jbc.M300276200
- Morelli, L., Llovera, R., Ibemdahl, S., and Castaño, E. M. (2002). The degradation of amyloid β as a therapeutic strategy in Alzheimer's disease and cerebrovascular amyloidosis. *Neurochem. Res.* 27, 1387–1399. doi: 10.1023/A:1021679817756
- Morris, A. W., Carare, R. O., Schreiber, S., and Hawkes, C. A. (2014). The cerebrovascular basement membrane: role in the clearance of β -amyloid and cerebral amyloid angiopathy. *Front. Aging Neurosci.* 6:251. doi: 10.3389/fnagi.2014.00251
- Morris, A. W., Sharp, M. M., Alborgo, N. J., Fernandes, R., Hawkes, C. A., Verma, A., et al. (2016). Vascular basement membranes as pathways for the passage of fluid into and out of the brain. *Acta Neuropathol.* 131, 725–736. doi: 10.1007/s00401-016-1555-z
- Nicholls, R. E., Alarcon, J. M., Malleret, G., Carroll, R. C., Grody, M., Vronskaya, S., et al. (2008). Transgenic mice lacking NMDAR-dependent LTD exhibit deficits in behavioral flexibility. *Neuron* 58, 104–117. doi: 10.1016/j.neuron.2008.01.039
- Nielsen, H. M., Mulder, S. D., Beliën, J. A., Musters, R. J., Eikelenboom, P., and Veerhuis, R. (2010). Astrocytic A β 1-42 uptake is determined by A β -aggregation state and the presence of amyloid-associated proteins. *Glia* 58, 1235–1246. doi: 10.1002/glia.21004
- Nimmerjahn, A., Kirchhoff, F., and Helmchen, F. (2005). Resting microglial cells are highly dynamic surveillants of brain parenchyma *in vivo*. *Science* 308, 1314–1318. doi: 10.1126/science.1110647
- Parikh, I., Fardo, D. W., and Estus, S. (2014). Genetics of PICALM expression and Alzheimer's disease. *PLoS ONE* 9:e91242. doi: 10.1371/journal.pone.0091242
- Poduslo, J. F., Curran, G. L., Sanyal, B., and Selkoe, D. (1999). Receptor-mediated transport of human amyloid- β 1-40 and 1-42 at the blood-brain barrier. *Neurobiol. Dis.* 6, 190–199. doi: 10.1006/nbdi.1999.0238
- Portelius, E., Westman-Brinkmalm, A., Zetterberg, H., and Blennow, K. (2006). Determination of β -amyloid peptide signatures in cerebrospinal fluid using immunoprecipitation-mass spectrometry. *J. Proteome Res.* 5, 1010–1016. doi: 10.1021/pr050475v
- Querfurth, H. W., and LaFerla, F. M. (2010). Alzheimer's disease. *N. Engl. J. Med.* 362, 329–344. doi: 10.1056/NEJMra0909142
- Roberts, K. F., Elbert, D. L., Kastan, T. P., Patterson, B. W., Sigurdson, W. C., Connors, R. E., et al. (2014). Amyloid- β efflux from the central

- nervous system into the plasma. *Ann. Neurol.* 76, 837–844. doi: 10.1002/ana.24270
- Rohrer, A., Baudry, J., Chaney, M. O., Kuo, Y.-M., Stine, W. B. J., and Emmerling, M. (2000). Oligomerization and fibril assembly of the amyloid- β protein. *Biochim. Biophys. Acta* 1502, 31–43. doi: 10.1016/S0925-4439(00)00030-2
- Rohrer, A. E., Chaney, M. O., Kuo, Y. M., Webster, S. D., Stine, W. B., Haverkamp, L. J., et al. (1996). Morphology and toxicity of Abeta-(1-42) dimer derived from neuritic and vascular amyloid deposits of Alzheimer's disease. *J. Biol. Chem.* 271, 20631–20635. doi: 10.1074/jbc.271.34.20631
- Rostagno, A., Holton, J. L., Lashley, T., Revesz, T., and Ghiso, J. (2010). Cerebral amyloidosis: amyloid subunits, mutants and phenotypes. *Cell Mol. Life Sci.* 67, 581–600. doi: 10.1007/s00018-009-0182-4
- Rostagno, A., Lal, R., and Ghiso, J. (2007). "Protein misfolding, aggregation, and fibril formation: common features of cerebral and non-cerebral amyloid diseases," in *The Neurobiology of Alzheimer's Disease*, eds D. Dawbarn S. and Allen (Oxford: Oxford University Press), 133–160.
- Saido, T., and Leissring, M. A. (2012). Proteolytic degradation of amyloid β -protein. *Cold Spring Harb. Perspect. Biol.* 2:a006379. doi: 10.1101/cshperspect.a006379
- Selkoe, D. J. (2001). Clearing the brain's amyloid cobwebs. *Neuron* 32, 177–180. doi: 10.1016/S0896-6273(01)00475-5
- Shankar, G. M., Welzel, A. T., McDonald, J. M., Selkoe, D. J., and Walsh, D. M. (2011). Isolation of low-n amyloid β -protein oligomers from cultured cells, CSF, and brain. *Methods Mol. Biol.* 670, 33–44. doi: 10.1007/978-1-60761-744-0_3
- Shibata, M., Yamada, S., Kumar, S. R., Calero, M., Bading, J., Frangione, B., et al. (2000). Clearance of Alzheimer's amyloid- β (1-40) peptide from brain by LDL receptor-related protein-1 at the blood-brain barrier. *J. Clin. Invest.* 106, 1489–1499. doi: 10.1172/JCI10498
- Solito, R., Corti, F., Fossati, S., Mezhericher, E., Donnini, S., Ghiso, J., et al. (2009). Dutch and Arctic mutant peptides of β amyloid(1-40) differentially affect the FGF-2 pathway in brain endothelium. *Exp. Cell Res.* 315, 385–395. doi: 10.1016/j.yexcr.2008.11.002
- Stine, W. B. Jr., Dahlgren, K. N., Krafft, G. A., and LaDu, M. J. (2003). *In vitro* characterization of conditions for amyloid- β peptide oligomerization and fibrillogenesis. *J. Biol. Chem.* 278, 11612–11622. doi: 10.1074/jbc.M210207200
- Strazielle, N., Ghersi-Egea, J.-F., Ghiso, J., Dehouck, M.-P., Frangione, B., Patlak, C. S., et al. (2000). *In vitro* evidence that b-amyloid peptide 1-40 diffuses across the blood-brain barrier and affects its permeability. *J. Neuropathol. Exp. Neurol.* 59, 29–38. doi: 10.1093/jnen/59.1.29
- Tanzi, R. E. (2012). The genetics of Alzheimer disease. *Cold Spring Harbor Perspect. Med.* 2:a006296. doi: 10.1101/cshperspect.a006296
- Tomidokoro, Y., Lashley, T., Rostagno, A., Neubert, T. A., Bojsen-Moller, M., Braendgaard, H., et al. (2005). Familial danish dementia: co-existence of ADan and A β amyloid subunits in the absence of compact plaques. *J. Biol. Chem.* 280, 36883–36894. doi: 10.1074/jbc.M504038200
- Tomidokoro, Y., Rostagno, A., Neubert, T. A., Lu, Y., Rebeck, G. W., Frangione, B., et al. (2010). Iowa variant of familial Alzheimer's disease: accumulation of posttranslationally modified A β D23N in parenchymal and cerebrovascular amyloid deposits. *Am. J. Pathol.* 176, 1841–1854. doi: 10.2353/ajpath.2010.090636
- Ueno, M., Chiba, Y., Murakami, R., Matsumoto, K., Kawauchi, M., and Fujihara, R. (2016). Blood-brain barrier and blood-cerebrospinal fluid barrier in normal and pathological conditions. *Brain Tumor Pathol.* 33, 89–96. doi: 10.1007/s10014-016-0255-7
- Vardy, E. R., Catto, A. J., and Hooper, N. M. (2005). Proteolytic mechanisms in amyloid- β metabolism: therapeutic implications for Alzheimer's disease. *Trends Mol. Med.* 11, 464–472. doi: 10.1016/j.molmed.2005.08.004
- Viana, R. J., Nunes, A. F., Castro, R. E., Ramalho, R. M., Meyerson, J., Fossati, S., et al. (2009). Tauroursodeoxycholic acid prevents E22Q Alzheimer's Abeta toxicity in human cerebral endothelial cells. *Cell. Mol. Life Sci.* 66, 1094–1104. doi: 10.1007/s00018-009-8746-x
- Walsh, D. M., Klyubin, I., Fadeeva, J. V., Cullen, W. K., Anwyl, R., Wolfe, M. S., et al. (2002). Naturally secreted oligomers of amyloid β protein potently inhibit hippocampal long-term potentiation *in vivo*. *Nature* 416, 535–539. doi: 10.1038/416535a
- Walsh, D. M., and Selkoe, D. J. (2007). A β oligomers - a decade of discovery. *J. Neurochem.* 101, 1172–1184. doi: 10.1111/j.1471-4159.2006.04426.x
- Wang, Y. J., Zhou, H. D., and Zhou, X. F. (2006). Clearance of amyloid- β in Alzheimer's disease: progress, problems and perspectives. *Drug Disc. Today* 11, 931–938. doi: 10.1016/j.drudis.2006.08.004
- Weller, R. O., Subash, M., Preston, S. D., Mazanti, I., and Carare, R. O. (2008). Perivascular drainage of amyloid- β peptides from the brain and its failure in cerebral amyloid angiopathy and Alzheimer's disease. *Brain Pathol.* 18, 253–266. doi: 10.1111/j.1750-3639.2008.00133.x
- Whalen, B. M., Selkoe, D. J., and Hartley, D. M. (2005). Small non-fibrillar assemblies of amyloid B-protein bearing the Arctic mutation induce rapid neuritic degeneration. *Neurobiol. Dis.* 20, 254–266. doi: 10.1016/j.nbd.2005.03.007
- Woods, A. S., Buchsbaum, J. C., Worrall, T. S., Berg, J. M., and Cotter, R. J. (1995). Matrix-Assisted Laser Desorption/Ionization of noncovalently bound compounds. *Anal. Chem.* 67, 4462–4465. doi: 10.1021/ac00120a005
- Wyss-Coray, T., Lin, C., Yan, F., Yu, G. Q., Rohde, M., McConlogue, L., et al. (2001). TGF- β 1 promotes microglial amyloid- β clearance and reduces plaque burden in transgenic mice. *Nat. Med.* 7, 612–618. doi: 10.1038/87945
- Wyss-Coray, T., Loike, J. D., Brionne, T. C., Lu, E., Anankov, R., Yan, F., et al. (2003). Adult mouse astrocytes degrade amyloid- β *in vitro* and *in situ*. *Nat. Med.* 9, 453–457. doi: 10.1038/nm838
- Zeng, Y., Callaghan, D., Xiong, H., Yang, Z., Huang, P., and Zhang, W. (2012). Abcg2 deficiency augments oxidative stress and cognitive deficits in Tg-SwDI transgenic mice. *J. Neurochem.* 122, 456–469. doi: 10.1111/j.1471-4159.2012.07783.x
- Zlokovic, B., Ghiso, J., Mackic, J. B., McComb, J. G., Weiss, M. H., and Frangione, B. (1993). Blood-brain barrier transport of circulating Alzheimer's amyloid- β . *Biochem. Biophys. Res. Comm.* 197, 1034–1040. doi: 10.1006/bbrc.1993.2582
- Zlokovic, B., Martel, C., Matsubara, E., McComb, J. G., Zheng, G., McCluskey, R. T., et al. (1996). Gp330/megalin: probable role in receptor-mediated transport of apolipoprotein J alone and in a complex with Alzheimer's Amyloid b at the blood-brain and blood-cerebrospinal fluid barriers. *Proc. Natl. Acad. Sci. U.S.A.* 93, 4229–4234. doi: 10.1073/pnas.93.9.4229
- Zlokovic, B. V. (2011). Neurovascular pathways to neurodegeneration in Alzheimer's disease and other disorders. *Nat. Rev. Neurosci.* 12, 723–738. doi: 10.1038/nrn3114

Conflict of Interest Statement: The authors declare that the research was conducted in the absence of any commercial or financial relationships that could be construed as a potential conflict of interest.

Copyright © 2016 McIntee, Giannoni, Blais, Sommer, Neubert, Rostagno and Ghiso. This is an open-access article distributed under the terms of the Creative Commons Attribution License (CC BY). The use, distribution or reproduction in other forums is permitted, provided the original author(s) or licensor are credited and that the original publication in this journal is cited, in accordance with accepted academic practice. No use, distribution or reproduction is permitted which does not comply with these terms.