



Since January 2020 Elsevier has created a COVID-19 resource centre with free information in English and Mandarin on the novel coronavirus COVID-19. The COVID-19 resource centre is hosted on Elsevier Connect, the company's public news and information website.

Elsevier hereby grants permission to make all its COVID-19-related research that is available on the COVID-19 resource centre - including this research content - immediately available in PubMed Central and other publicly funded repositories, such as the WHO COVID database with rights for unrestricted research re-use and analyses in any form or by any means with acknowledgement of the original source. These permissions are granted for free by Elsevier for as long as the COVID-19 resource centre remains active.

Selected Topics: Neurological Emergencies

LARGE CEREBELLAR STROKE IN A YOUNG COVID-19-POSITIVE PATIENT: CASE REPORT

Faith Quenzer, DO,* Cameron Smyres, MD,* Norma Tabarez, NP,† Sukhdeep Singh, MD,* Andrew LaFree, MD,*
Christian Tomaszewski, MD,* and Stephen R. Hayden, MD*

*UC San Diego Health Sciences, UC San Diego Medical Center, San Diego, California and †Department of Emergency Medicine, El Centro Regional Medical Center, El Centro, California

Reprint Address: Faith Quenzer, DO, UC San Diego Health Sciences, UC San Diego Medical Center, 200 West Arbor Drive, Mail Code 8676, San Diego, CA 92103

Abstract—Background: Coronavirus disease 2019 (COVID-19), caused by the novel severe acute respiratory syndrome coronavirus 2 (SARS-CoV-2), most frequently presents with respiratory symptoms, such as fever, dyspnea, shortness of breath, cough, or myalgias. There is now a growing body of evidence that demonstrates that severe SARS-CoV-2 infections can develop clinically significant coagulopathy, inflammation, and cardiomyopathy, which have been implicated in COVID-19-associated cerebrovascular accidents (CVAs). **Case Report:** We report an uncommon presentation of a 32-year-old man who sustained a large vessel cerebellar stroke associated with a severe COVID-19 infection. He presented with a headache, worse than his usual migraine, dizziness, rotary nystagmus, and dysmetria on examination, but had no respiratory symptoms initially. He was not a candidate for thrombolytic therapy or endovascular therapy and was managed with clopidogrel, aspirin, and atorvastatin. During hospital admission he developed COVID-19-related hypoxia and pneumonia, but ultimately he was discharged to home rehabilitation. **Why Should an Emergency Physician Be Aware of This?:** We present this case to increase awareness among emergency physicians of the growing number of reports of neurologic and vascular complications, such as ischemic CVAs, in otherwise healthy individuals who are diagnosed with SARS-CoV-2 infection. A brief review of the current literature will help elucidate possible mechanisms, risk factors, and current treatments for CVA associated with SARS-CoV-2. © 2021 Elsevier Inc. All rights reserved.

Keywords—cerebellar infarction; ischemic stroke; cerebrovascular accident; coagulopathy; prothrombotic state; COVID-19; SARS-CoV-2

INTRODUCTION

The novel severe acute respiratory syndrome coronavirus 2 (SARS-CoV-2) is the primary cause of the ongoing coronavirus disease 2019 (COVID-19) pandemic. COVID-19 most frequently presents with respiratory symptoms, such as fever, dyspnea, cough, or myalgias (1). There is now mounting evidence that demonstrates that SARS-CoV-2 infections can give rise to a wide range of neurologic symptoms. These include headache, seizures, dizziness, ataxia, encephalitis, ageusia, anosmia, neuralgia, Guillain-Barre syndrome, acute disseminated encephalomyelitis, and cerebrovascular accidents (CVAs) (2–5).

Strokes in young, healthy adults are less commonly observed and comprise approximately 10–15% of the overall number of strokes in the United States (6). However, strokes have also been observed in patients diagnosed with COVID-19 (2–5,7). Observational research has demonstrated that SARS-CoV-2 infection has been associated with a coagulopathic state and a variety of prothrombotic sequelae (8–14). We report an unusual case of a large cerebellar CVA in a young man who presented to a community emergency department (ED) with a headache

and dizziness and without initial respiratory symptoms that are typical of COVID-19 infections.

CASE REPORT

A 32-year-old man with a history of tension-type migraine headache presented to a community ED with headache, generalized weakness, dizziness, nausea, and vomiting that started at 8:00 AM the previous day. The patient described a severe, sudden-onset headache located over the left temple and sudden acute vertigo. His headache was constant and more severe than his normal migraine headaches. The patient denied fever, changes in vision, rash, or neck stiffness. He had no chest pain, palpitations, shortness of breath, dyspnea on exertion, or cough. He had not tried any medication and reported no palliative or provoking symptoms. He denied any tobacco use or illicit drug or prescription drug use. He was living with his parents who had both reportedly tested positive for COVID-19.

On arrival to the ED, his initial vital signs were blood pressure 130/89 mm Hg, heart rate 77 beats/min, respiratory rate 26 breaths/min, oxygen saturation 100% on room air, and body mass index of 28.7 kg/m² (overweight). Overall, the patient was well-appearing and in mild distress. He was alert and oriented to person, place, year, and situation. His rapid alternating movements and gait were normal. His neurologic examination was notable for mild decrease sensation over the left temple, left upper extremity ataxia and dysmetria, and rotary nystagmus. The patient's vertigo and nystagmus worsened with the Dix-Hallpike maneuver when his head was turned to the left. He reported mild relief of symptoms with the Epley maneuver.

His initial complete blood count (CBC) had white count of $6.85 \times 10^3/\mu\text{L}$ (range 4.80–10.7 $\times 10^3/\mu\text{L}$), hemoglobin 15.7 g/L (range 14.1–16.6 g/L), hematocrit 48.7% (range 41.0–48.0%), platelet count $366 \times 10^3/\mu\text{L}$ (range 130–400 $\times 10^3/\mu\text{L}$), and lymphocytes 9.7% (range 18.0–45%). The differential had an elevation of atypical lymphocytes 8.0% (range 0.0–2.0%). The comprehensive metabolic panel was unremarkable except for glucose 121 mg/dL (range 70–110 mg/dL) and a slight elevation in the alanine aminotransferase at 88 U/L (range 0–55 U/L). The SARS-CoV-2 nasopharyngeal polymerase chain reaction test Abbott ID NOW COVID-19 assay (Abbott Diagnostics Scarborough, Inc, Scarborough, ME) was positive. In addition, his D-dimer was elevated to 2443 ng/mL (range 0–230 ng/mL), C-reactive protein was elevated to 1.7 mg/dL (range 0.0–0.9 mg/dL), and lactic dehydrogenase was elevated to 860 U/L (range 313–618 U/L). His alcohol level was < 10 mg/dL (range 0–10 mg/dL) and the urine drug screen was negative for opiates and illicit drugs. A computed to-

mography scan of the head (CT head) without contrast was performed.

Prior to the final read of the CT head without contrast, the tele-neurology service was also consulted due to the patient's vertigo, ataxia, and rotary nystagmus. The patient was treated for a possible complicated migraine headache, or benign positional peripheral vertigo with ketorolac 30 mg i.v., metoclopramide 10 mg i.v., and dexamethasone 6 mg i.v. in the ED. Despite treatment, the patient's vertigo, ataxia, and rotary nystagmus was persistent and severe. The results of the CT head without contrast (Figure 1) then showed a large left cerebellar nonhemorrhagic infarction. The radiologist also noted an 8-mm hyperattenuated lesion within the left anterolateral aspect of the foramen magnum, which was concerning for a thrombosed aneurysm within the region of the left posterior inferior cerebellar artery, with an associated high-density focus in the distal left vertebral artery. The basilar artery was unremarkable. Geographic hypoattenuation throughout the left inferior cerebellar hemisphere was also noted, concerning for ischemic change (see Figure 1). A magnetic resonance imaging (MRI) brain with and without contrast was performed shortly thereafter and confirmed the same cerebellar infarct (see Figures 2 and 3).

Hospital Course

The tele-neurology service was consulted again due to the findings of both the CT head and the MRI head without contrast (Figures 1 and 2), which were concerning for



Figure 1. Computed tomography head without contrast. There is a moderately large patchy area of low attenuation involving the inferior two-thirds of the left cerebellum (arrow) suggesting an acute nonhemorrhagic infarction of the left posterior cerebral artery territory. There appears to be a thrombus within the left vertebral artery. There is no acute intracranial hemorrhage, no white matter ischemic changes, or demyelination identified.

left-sided cerebellar infarct. Because his stroke symptoms started more than 48 h prior to arrival, thrombolytics and endovascular interventions were not recommended. The National Institute of Health Stroke Scale was not recorded during his ED stay or his discharge. He was admitted and started on clopidogrel 600 mg, aspirin 324 mg, and 80 mg of atorvastatin. An initial screening chest x-ray study showed no evidence of pneumonia, consolidation, or any pulmonary edema (Figure 4). However, on day 5 of admission, he developed symptoms consistent with hypoxia secondary to COVID-19 pneumonia and was given supplemental oxygen, but he did not require invasive ventilation. The patient did receive a course of remdesivir when he developed COVID-19 pneumonia. The basic metabolic panel and CBC were performed throughout his admission within the first 2 weeks. However, the CBC differential was only performed sporadically. No other laboratory abnormalities were noted except for the consistently elevated D-dimer (Figure 5), elevated white blood cell count (WBC), and lymphopenia on day 5 when the patient was found to have COVID-19 pneumonia. Figure 6 shows the sharp increase of his WBC to $15.6 \times 10^3/\mu\text{L}$ (range $4.80\text{--}10.7 \times 10^3/\mu\text{L}$) with 79.8% (range 44–72%) neutrophils and 8.6% (range 18.0–45%) lymphocytes on day 5, which normalized by day 10 to WBC of $7.86 \times 10^3/\mu\text{L}$ (range $4.80\text{--}10.7 \times 10^3/\mu\text{L}$).



Figure 2. Magnetic resonance imaging of the brain without contrast shows the acute nonhemorrhagic infarction of the inferior two-thirds of the left cerebellum. There is a moderately large acute nonhemorrhagic infarction of the inferior two-thirds of the left cerebellum (arrow) corresponding to the left posterior inferior cerebellar artery territory. There is no acute intracranial hemorrhage.

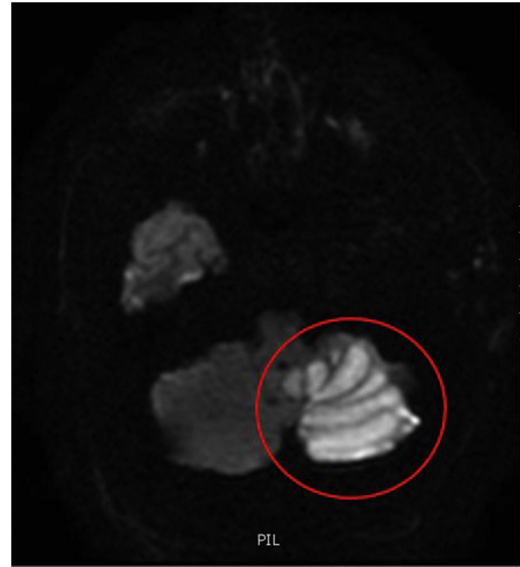


Figure 3. Magnetic resonance imaging head without contrast, Diffusion weight imaging demonstrates a moderately large area of true diffusion restriction involving the lower two-thirds of the left cerebellum (circled) consistent with acute nonhemorrhagic cerebellar infarction. No acute intracranial hemorrhage. There is no hemosiderin deposition evident within the brain parenchyma.

Additional laboratory screening was positive for phosphatidyl serine IgM antibodies only, but all other antiphospholipid syndrome (APS) antibodies were negative. All other coagulopathic laboratory tests, such as protein C and protein S, antithrombin, factor V, von Willebrand Factor, and factor VIII were normal. In addition, the lipoprotein (a) cholesterol was $< 10 \text{ mmol/L}$ (normal $< 75 \text{ mmol/L}$). The echocardiogram and bubble study were unremarkable. His symptoms of nystagmus and vertigo continued to improve and he was discharged



Figure 4. Anterior posterior view chest x-ray study is negative for coronavirus disease 2019 pneumonia on admission.

on clopidogrel 75 mg daily and atorvastatin 80 mg daily. He was also ambulatory with a walker on day 13 awaiting transfer to a rehabilitation facility.

Routine laboratory values were not reported daily after day 17 of admission. Only SARS-CoV-2 and D-dimer were monitored every other day until 1 week prior to discharge. Nearby rehabilitation facilities required two serial negative SARS-CoV-2 tests for acceptance. However, the patient continued to have positive tests for SARS-CoV-2 while continuing his rehabilitation at the hospital. He was discharged on day 26 with his symptoms markedly improved while awaiting home rehabilitation. There were no additional records from outpatient follow-up to indicate that he had any additional laboratory tests to further investigate coagulopathies or vasculitis.

DISCUSSION

Ischemic stroke is one of the more serious neurologic complications seen in patients with COVID-19 infection and has been observed more commonly in patients older than 55 years who have significant comorbidities (2–5,9–17). Retrospective studies in Wuhan, China have found an incidence of 2–5% CVA in patients with COVID-19 (2,15). Ischemic strokes were more commonly observed than hemorrhagic strokes in patients with COVID-19 (3,7,15). In a case series of 6 patients with COVID-19 by Morassi and colleagues there were four (67%) ischemic strokes and two (33%) hemorrhagic strokes (3). Li and colleagues found that of their 219 patients with confirmed SARS-CoV-2, 11 (5.0%) had developed new onset of CVA after COVID-19 infection (15). Of these patients, 10 (90.9%) were diagnosed with ischemic stroke and 1 (9.1%) had intracerebral hemorrhage. Ash-

rafi and colleagues found 6 patients younger than 55 years with COVID-19 who were diagnosed with ischemic CVA (7). These patients presented with altered mental status, hemiplegia, hemiparesis, or dysarthria. Excluded from the study were any patients who had abnormal echocardiograms. Five of the 6 patients (83.3%) had strokes involving the middle cerebral artery and 1 patient with a basilar artery stroke. One of the patients died from the stroke (7).

A growing amount of evidence shows that patients with COVID-19 develop clinically significant coagulopathy, inflammation, and cardiomyopathy, which have been implicated in associated CVAs (15–18).

Pathophysiology and Mechanisms of COVID-19 Stroke

Patients with ischemic strokes and severe SARS-CoV-2 infection are observed to have clinically significant prothrombotic states (7–17). Recently, abnormal D-dimer, prothrombin time (PT), activated partial thromboplastin time, platelets, fibrinogen, antithrombin activity, factor V, von Willebrand Factor, and factor VIII in findings have been found in patients with severe COVID-19 (18,19). A retrospective study by Helms and colleagues compared the number of significant thrombotic complications, such as arterial thrombosis, pulmonary embolisms, and CVAs, in patients with COVID-19 with acute respiratory distress syndrome (ARDS) vs. those with non-COVID-19 ARDS (19). They observed that significant thrombotic complications were more likely to be diagnosed in 27 of 150 (18%) of the patients with COVID-19 ARDS vs. 14 of the 233 (6%) non-COVID-19 ARDS patients (odds ratio [OR] 3.4; 95% confidence interval [CI] 1.7–7.3; $p < 0.001$) (19).

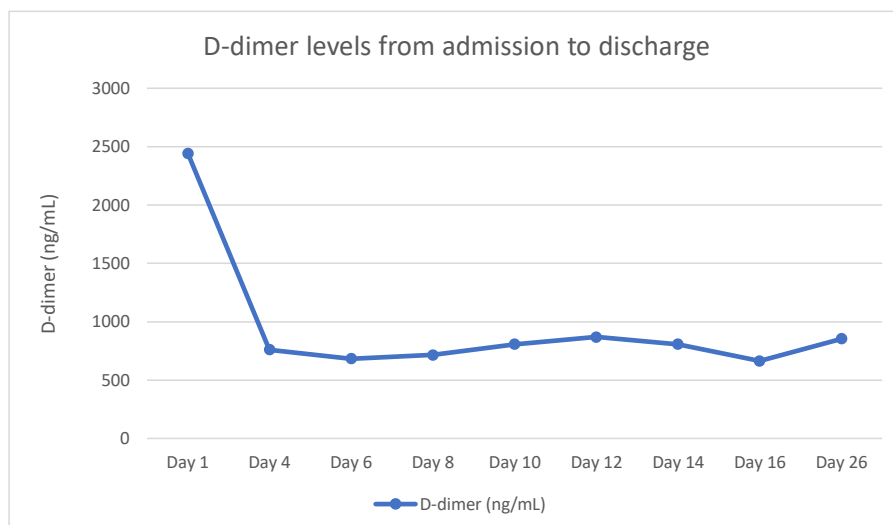


Figure 5. D-dimer from admission to discharge.

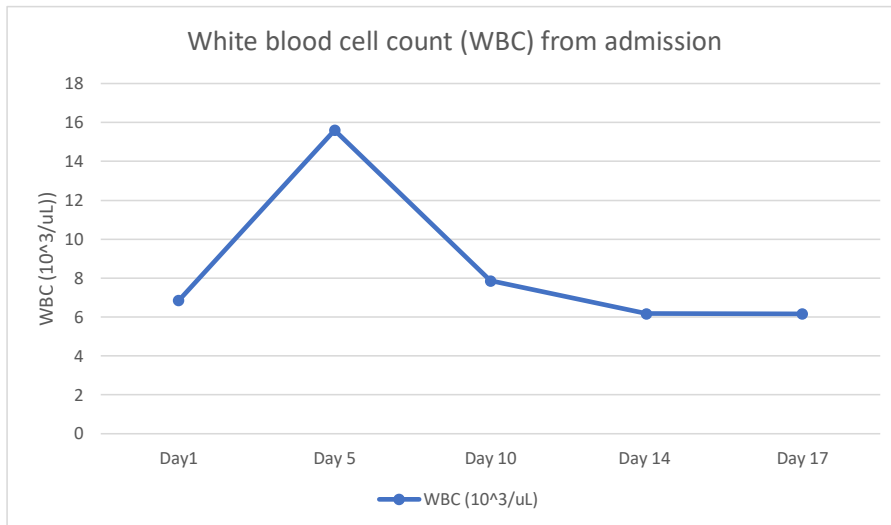


Figure 6. WBC from admission day 1 to day 17. The increase of WBC correlates with the patient's diagnosis of hypoxia secondary to coronavirus disease 2019 pneumonia on day 5.

The exact pathogenesis of this hypercoagulopathy has yet to be fully elucidated, but it is postulated that it is a multifactorial process that also includes the complement pathway (18,20,21). In prior studies relating to SARS-CoV (SARS), it was observed that elevated complement (C3) activation exacerbates ARDS. Prior studies of SARS suggest that C3 inhibition may decrease the risk of inflammatory lung complications of SARS-CoV-2 (20,21). Elevated levels of complement have been observed in patients with severe SARS-CoV-2 infection. There is some histopathologic evidence to suggest that complement-driven endothelial damage on various organs due to SARS-CoV-2 infection (18,20–22). Vascular endothelium that is damaged by SARS-CoV-2 can activate the complement system and cause an overactivation of the systemic pro-inflammatory response. This is hypothesized to be part of a catastrophic positive feedback loop with the coagulation system, which in turn leads to an overactivation of the complement system (16,18,20–22). The positive feedback of the pro-inflammatory response has been observed in severe COVID-19 cases (18,20–22). In addition, known risk factors, such as diabetes, hypertension, coronary artery disease, and obesity, that have been associated with pre-existing vascular endothelial damage could also make patients with these comorbidities especially vulnerable to severe COVID-19 and associated vascular complications (18).

The most common laboratory evidence of coagulopathy in severe COVID-19 is found with elevated D-dimer (8,14,17–19,22,23). Guan and colleagues found 1099 patients with COVID-19 with a D-dimer ≥ 0.5 mg/L were more frequently observed in patients with severe disease than in those without (60% vs. 43%; $p = 0.002$) (23). In a

retrospective analysis of 138 hospitalized patients, Wang and colleagues observed that there was a 2.5-fold increase in D-dimer level in ICU patients ($n = 36$) compared with non-ICU ($n = 102$) patients ($p < 0.001$) (8). Wang and colleagues also observed that those with severe COVID-19 who died, had D-dimers > 1000 mg/L compared with non-survivors who had D-dimer levels < 500 mg/L ($p < 0.05$) (8). In the retrospective cohort analysis in New York, 32 (0.9%) of the 3556 COVID-19–positive patients with strokes had higher peak D-dimer vs. stroke patients without COVID-19. Reportedly, 65% of these strokes were cryptogenic (24).

Severe SARS-CoV-2 infection is also associated with increased systemic inflammation from infection-mediated endothelial injury through interleukin 6 and tumor necrosis factor- α , which triggers excessive thrombin production leading to microthrombi and microvascular dysfunction (10,25–27). In addition, angiotensin converting enzyme type 2 (ACE2) receptors found on endothelial cells of the blood–brain barrier can allow for viral entry into the nervous system and attack the vasculature of the nervous system, causing endothelitis (12,21,25–27). SARS-CoV-2 infection stimulates ACE2, thus increasing ATII, which causes microcirculatory vasoconstriction and endothelial dysfunction with consequent ischemia and apoptosis (12,20,21,25–27).

Patients with infections due to viral illnesses have had antiphospholipid antibodies, which may have contributed to major coagulopathic complications (28–30). Standard APS classification includes thrombosis or pregnancy morbidity and the presence of one laboratory criterion lupus anticoagulant, anticardiolipin antibodies (aCL), or β_2 -glycoprotein I antibodies (a β_2 GPI). Then, the

presence of these antibodies are measured again 12 weeks after the initial testing (31). Recently, there have been reports that have found a temporary increase of antiphospholipid antibodies in critically ill patients with COVID-19 (9–11,13,29,30). Zhang and colleagues reported confirmed severe COVID-19 cases were found to have aCL and $\alpha\beta 2$ GPI IgA and IgG (11). In critically ill patients with COVID-19 with thrombotic events, the prevalence of antiphospholipid antibodies is estimated to be between 45% and 91% (9,11–13). The presence of these various antiphospholipid antibodies has also been observed in reported cases of patients with COVID-19 with large vessel cerebral infarcts in multiple vascular territories (9–11,13).

Although not part of the formal APS criteria, a review of literature has demonstrated that even antiphosphatidylserine (aPS) IgM antibodies have been associated with significant thrombotic events (32,33). Our patient in the case had an elevation of aPS IgM in his serum. These aPS IgMs have been observed as transient, but have been implicated in patients with severe COVID-19 with major thromboembolic complications (30,32). In a recent review of 172 hospitalized patients with COVID-19, Zuo and colleagues measured levels of aCL, $\alpha\beta 2$ GPI, and aPS/PT (30). They found that 50% of the hospitalized patients had become transiently aPL-positive. Of the 172 hospitalized patients, 18% were positive for aPS/PT IgM (30). In their systematic review, Sciascia and colleagues found that in 7000 patients from 48 studies, aPS IgM had increased the risk of thrombotic events (OR 2.3; 95% CI 1.72–3.5) (32). In comparing anti-prothrombin antibodies vs. aPS antibodies, Sciascia and colleagues observed aPS antibodies appeared to have stronger risk factor for thrombosis, both arterial or venous, than aPT (OR 5.11; 95% CI 4.2–6.3 and OR 1.82; 95% CI 1.44–2.75, respectively) (32).

In addition, there are several proposed mechanisms in SARS-CoV-2 infection that could contribute to cardiomyopathy and ischemic stroke. In their research, Wang and colleagues observed that acute cardiac injury can come from direct invasion of SARS-CoV-2 (8). Direct invasion causes inflammation and myocarditis (34). Similarly, inflammation produced from SARS-CoV-2 could be implicated in pericarditis. Myocarditis, myopericarditis, and pericarditis due to COVID-19 can predispose one to cardiac dysrhythmias that contribute to strokes (14,34,35). In addition, stress and cytokine storm can also cause dysrhythmias, which predispose patients to embolic strokes (14,34,35).

Epidemiology and Profile of Patients With COVID-19 Strokes

Several retrospective cohort studies have estimated the incidence of COVID-19-associated strokes to be 2.5–

6% of the total number of patients with COVID-19 (13,35–38). According to several retrospective cohort studies, COVID-19-associated CVAs were more frequently observed in patients older than 55 years and with stroke risk factors due to the increased risk of having diabetes, hypertension, hypercholesterolemia, peripheral vascular disease, prior strokes, obesity, and cardiac disease (3,7,13,15,18,27–37).

Cohort studies of CVAs associated with COVID-19 infection found that they often occurred in a much younger population. Ashrafi and colleagues reported that their patients had a mean \pm standard deviation age of 43.5 ± 7.42 years (range 33–53 years). In this cohort, half were male patients who presented with respiratory symptoms and were hypoxic with O_2 saturation $< 92\%$ on room air and half of the patients had comorbidities, such as hypertension and or diabetes.⁷ Oxley and colleagues reported 5 patients younger than 50 years with no medical history presenting with large vessel strokes and 4 of the 5 patients had an elevated D-dimer (39).

Potential Treatment and Therapy of COVID-19 Stroke

Because of the mechanism of increased coagulation, it is hypothesized that anticoagulants such as enoxaparin should help decrease coagulopathic complications in COVID patients.

There are interim guidelines that support the routine use of low-molecular-weight heparin in patients with coagulopathy (14,24). Yaghi and colleagues reported that a randomized trial of therapeutic anticoagulation vs. prophylactic anticoagulation is underway to test for safety and efficacy of enoxaparin in patients with severe COVID-19 infection-associated coagulopathy (24). In the case of ischemic stroke, if patients are within the given 3-h time frame of stroke onset, thrombolytic therapy or thrombectomy should be considered (14,40).

Limitations

We cannot establish strong causal effect of a coagulopathic state with the outcome of ischemic stroke in our patient. Migraine, in itself, increases the risk of stroke, but this is more likely in women (41). Furthermore, we do not know whether our patient truly had an underlying primary coagulopathy. Although, he did not report having a concomitant connective tissue disease or a coagulopathy to suggest that could have contributed to his hypercoagulopathic state and stroke.

Our patient had an elevation of aPS antibodies, which does not meet the diagnosis of APS. However, there are no records to re-evaluate for the presence of APS and the aPS antibodies in a 12-week span. However, recent research has observed a transient elevation of aPS

antibodies in patients with COVID-19 and that these patients do have a higher risk for coagulopathic complications, including strokes (29,30,35). In addition, elevation in D-dimer and presence of aPS antibodies could be an indicator for a hypercoagulopathic state in patients with COVID-19, and might have led to our patient's stroke, as in other cases (9–12,35). Regardless, we postulate that the SARS-CoV-2 infection may have been an important precipitating factor for thrombosis that resulted in our patient's cerebellar CVA.

WHY SHOULD AN EMERGENCY PHYSICIAN BE AWARE OF THIS?

We report an unusual case of a large ischemic cerebellar stroke in a young man with no medical history other than migraine headaches who did not present with primary respiratory symptoms of COVID-19 at the onset of his course. Although rare, this case should raise awareness among emergency physicians of SARS-CoV-2 in otherwise low-risk patients who present with a high clinical suspicion of CVA, given the coagulopathic risk.

REFERENCES

- Burke RM, Killerby ME, Newton S, et al. Symptom profiles of a convenience sample of patients with COVID-19—United States, January—April 2020. *MMWR. Morb Mortal Wkly Rep* 2020;69:904–8.
- Mao L, Jin H, Wang M, et al. Neurologic manifestations of hospitalized patients with coronavirus disease 2019 in Wuhan, China. *JAMA Neurol* 2020;77:683.
- Morassi M, Bagatto D, Cobelli M, et al. Stroke in patients with SARS-CoV-2 infection: case series. *J Neurol* 2020;267:2185–92.
- Azhideh A. COVID-19 neurological manifestations. *Int Clin Neurol* 2020;7(2):54.
- Niazkar HR, Zibae B, Nasimi A, Bahri N. The neurological manifestations of COVID-19: a review article. *Neurol Sci* 2020;41:1667–71.
- George MG. Risk factors for ischemic stroke in younger adults: a focused update. *Stroke* 2020;51:729–35.
- Ashrafi F, Zali A, Ommi D, et al. COVID-19-related strokes in adults below 55 years of age: a case series. *Neurol Sci* 2020;41:1985–9.
- Wang D, Hu B, Hu C, et al. Clinical characteristics of 138 hospitalized patients with 2019 novel coronavirus-infected pneumonia in Wuhan, China. *JAMA* 2020;323:1061–9.
- Fan H, Tang X, Song Y, Liu P, Chen Y. Influence of COVID-19 on cerebrovascular disease and its possible mechanism. *Neuropsychiatr Dis Treat* 2020;16:1359–67.
- Lodigiani C, Iapichino G, Carenzo L, et al. Venous and arterial thromboembolic complications in COVID-19 patients admitted to an academic hospital in Milan, Italy. *Thromb Res* 2020;191:9–14.
- Zhang Y, Xiao M, Zhang S, et al. Coagulopathy and antiphospholipid antibodies in patients with COVID-19. *N Engl J Med* 2020;382(17):e38.
- Tang N, Li D, Wang X, Sun Z. Abnormal coagulation parameters are associated with poor prognosis in patients with novel coronavirus pneumonia. *J Thromb Haemost* 2020;18:844–7.
- Bridwell R, Long B, Gottlieb M. Neurologic complications of COVID-19. *Am J Emerg Med* 2020;38:1549.e3–7.
- Hasset C, Gedansky A, Mays M, Uchino K. Acute ischemic stroke and COVID-19. *Cleve Clin J Med* 2020; <https://doi.org/10.3949/ccjm.87a.ccc042>. [Epub ahead of print].
- Li Y, Li M, Wang M, et al. Acute cerebrovascular disease following COVID-19: a single center, retrospective, observational study. *Stroke Vasc Neurol* 2020;5:e000431.
- Spence J, Freitas G, Pettigrew L, et al. Mechanisms of stroke in COVID-19. *Cerebrovasc Dis* 2020;49:451–8.
- Merkler AE, Parikh NS, Mir S, et al. Risk of ischemic stroke in patients with coronavirus disease 2019 (COVID-19) vs patients with influenza. *JAMA Neurol* 2020;77(11):1–7.
- Al-Ani F, Chehade S, Lazo-Langner A. Thrombosis risk associated with COVID-19 infection. A scoping review. *Thromb Res* 2020;192:152–60.
- Helms J, Tacquard C, Severac F, et al. High risk of thrombosis in patients with severe SARS-CoV-2 infection: a multicenter prospective cohort study. *Intensive Care Med* 2020;46:1089–98.
- Risitano AM, Mastellos DC, Huber-Lang M, et al. Complement as a target in COVID-19? *Nat Rev Immunol* 2020;20:343–4.
- Java A, Apicelli AJ, Liszewski MK, et al. The complement system in COVID-19: friend and foe? *JCI Insight* 2020;5(15):e140711.
- Magro C, Mulvey JJ, Berlin D, et al. Complement associated microvascular injury and thrombosis in the pathogenesis of severe COVID-19 infection: a report of five cases. *Trans Res* 2020;220:1–13.
- Guan WJ, Ni ZY, Hu Y, et al. Clinical characteristics of coronavirus disease 2019 in China. *N Engl J Med* 2020;382:1708–20.
- Yaghi S, Ishida K, Torres J, et al. SARS-CoV-2 and stroke in a New York healthcare system. *Stroke* 2020;51:2001–11.
- Pons S, Fodil S, Azoulay E, Zafrani L. The vascular endothelium: the cornerstone of organ dysfunction in severe SARS-CoV-2 infection. *Crit Care* 2020;24:353.
- Lee SG, Fralick M, Sholzberg M. Coagulopathy associated with COVID-19. *CMAJ* 2020;192(21):E583.
- Gupta A, Madhavan MV, Sehgal K, et al. Extrapulmonary manifestations of COVID-19. *Nat Med* 2020;26:1017–32.
- Uthman IW, Gharavi AE. Viral infections and antiphospholipid antibodies. *Semin Arthritis Rheum* 2002;31:256–63.
- Mackman N, Antoniak S, Wolberg AS, Kasthuri R, Key NS. Coagulation abnormalities and thrombosis in patients infected with SARS-CoV-2 and other pandemic viruses. *Arterioscler Thromb Vasc Biol* 2020;40:2033–44.
- Zuo Y, Estes SK, Ali RA, et al. Prothrombotic autoantibodies in serum from patients hospitalized with COVID-19. *Sci Transl Med* 2020;12(570):eabd3876.
- Devreese KJM, Ortel TL, Pengo V, de Laat B, for the Subcommittee on Lupus Anticoagulant/Antiphospholipid Antibodies. Laboratory criteria for antiphospholipid syndrome: communication from the SSC of the ISTH. *J Thromb Haemost* 2018;16:809–13.
- Sciascia S, Sanna G, Murru V, Roccatello D, Khamashta MA, Bertolaccini ML. Anti-prothrombin (aPT) and antiphosphatidylserine/prothrombin (aPS/PT) antibodies and the risk of thrombosis in the antiphospholipid syndrome. A systematic review. *Thromb Haemost* 2014;111:354–64.
- Radin M, Foddai SG, Cecchi I, et al. Antiphosphatidylserine/prothrombin antibodies: an update on their association with clinical manifestations of antiphospholipid syndrome. *Thromb Haemost* 2020;120:592–8.
- Esposito A, Palmisano A, Natale L, et al. Cardiac magnetic resonance characterization of myocarditis-like acute cardiac syndrome in COVID-19. *JACC Cardiovasc Imaging* 2020;13:2462–5.
- Iguina M, Saleh A, Sayeedi I, Danckers M. Recurrent ischemic strokes in a patient with severe COVID-19 infection and phosphatidylserine antibodies. *Chest* 2020;158(4):A776.

36. Hess DC, Eldahshan W, Rutkowski E. COVID-19-related stroke. *Transl Stroke Res* 2020; <https://doi.org/10.1007/s12975-020-00818-9>. [Epub ahead of print].
37. Zhou Z, Kang H, Li S, et al. Understanding the neurotropic characteristics of SARS-CoV-2: from neurological manifestations of COVID-19 to potential neurotropic mechanisms. *J Neurol* 2020; 267:2179–84.
38. Larson AS, Savastano L, Kadirvel R, Kallmes DF, Hassan AE, Brinjikji W. Coronavirus disease 2019 and the cerebrovascular-cardiovascular systems: what do we know so far? *J Am Heart Assoc* 2020;9(13):e016793.
39. Oxley TJ, Mocco J, Majidi S, et al. Large-vessel stroke as a presenting feature of Covid-19 in the young. *N Engl J Med* 2020;382(20):e60.
40. Thachil J, Tang N, Gando S, et al. ISTH interim guidance on recognition and management of coagulopathy in COVID-19. *J Thromb Haemost* 2020;18:1023–6.
41. Øie LR, Kurth T, Gulati S, et al. Migraine and risk of stroke. *J Neurol Neurosurg Psychiatry* 2020;91:593–604.