


 Cite this: *RSC Adv.*, 2022, 12, 30076

The *in vitro* fermentation of compound oral liquid by human colonic microbiota altered the abundance of probiotics and short-chain fatty acid production

 Ruiming Xiao,^{ab} Hongzhang Chen,^{ab} Hongbei Han,^{ab} Guangjuan Luo^{ab} and Ying Lin^{*ab}

Compound oral liquid (COL), made from functional herbal foods, has gained immense popularity in China for healthcare. However, the interaction between the nutrients in COL and gut microbiota is still unclear. In our study, the content of total flavonoids, polyphenols, and proteins was increased and the total sugar reduced by crushing raw ingredients to 10 mesh (COL-C). After 24 h incubation with supplemented COL by human gut microbiota, the results of 16S rRNA high-throughput sequencing revealed that *Faecalibacterium*, *Collinsella*, *Bifidobacterium*, *Megamonas*, *Lactobacillus*, *Phascolarctobacterium*, and *Dialister* were enriched by COL. In particular, the latter three genera were observed to be significantly enriched after incubation with COL-C. Meanwhile, the abundance of *Dorea*, *Clostridium* XIVa, and *Escherichia/Shigella* was inhibited by COL. Moreover, the increased levels of acetate, propionate, and butyrate in COL were jointly contributed by supplementary carbohydrates and the enrichment of short-chain fatty acid (SCFA)-producing bacteria. In summary, our results indicated that the optimized extraction facilitated the nutrients to be dissolved out and enhanced the potential prebiotic effects for promoting the abundance of probiotics, suggesting that the nutrients in COL-C might improve the microbial structure by strengthening the metabolism of beneficial bacteria and restricting the conditioned pathogens more efficiently.

 Received 12th August 2022
Accepted 3rd October 2022

DOI: 10.1039/d2ra05053f

rsc.li/rsc-advances

Introduction

Functional foods have received wide attention in the past few decades due to their potential in preserving the wellness of human health.¹ Beyond their pharmaceutical values, functional foods are also used for healthcare in the form of soups and teas in Southern China.^{2,3} Currently, traditional herbal medicines, such as *ginseng*, *Siraitia grosvenorii*, and *Fructus lycii*, are common ingredients for making functional foods in China, particularly in the wet and hot districts. Previous studies have shown that the active contents in functional foods, including flavonoids, polyphenols, and non-starch polysaccharides, could improve health conditions by reducing inflammation^{2,4,5} and protecting the intestinal barrier in colitis mice.^{6–8} In addition, there is growing evidence that functional foods mediately affected the host health by regulating the gut microbial composition and metabolism.⁹

Since the concept of personal diet and nutrition was introduced to the public,^{10,11} an increasing number of people started to adopt functional foods to manage their health. Compound oral liquid (COL) is a commercial functional food developed by Infinite Co., Ltd, which mainly consists of the water extracts of *Polygoni Multiflori Radix Praeparata* (PMRP) and *Morinda officinalis* (MO). Recent studies have suggested that PMRP could improve the liver mitochondrial function by regulating the mitochondrial metabolic pathways to alleviate glucolipid metabolic disorders, and inulin-type oligosaccharides in root MO was considered to be a potential prebiotic.^{12,13} Although the health-promoting effects of single herbs are exciting, the impact of their compound nutrition on gut microbiota remained to be investigated.

More recently, the development of sequencing and multi-omics technology has accelerated the comprehension of interaction between the gut microbiota and the nutrients of functional foods. For instance, abundant glucosidases encoded in the genome of *Bacteroidetes* and *Firmicutes* helped hydrolyze the non-starch polysaccharides in *Lycium barbarum* to produce short-chain fatty acids (SCFAs) and contributed to the abundance of probiotics including *Faecalibacterium*.^{14,15} Another health tonic oral liquid was confirmed to maintain glucose and

^aSouth China University of Technology, School of Bio and Chemical Engineering, Guangdong Key Laboratory of Fermentation and Enzyme Engineering, Guangzhou 510006, People's Republic of China. E-mail: feylin@scut.edu.cn

^bSouth China University of Technology, Guangdong Research Center of Industrial Enzyme and Green Manufacturing Technology, School of Bio and Chemical Engineering, Guangzhou 510006, People's Republic of China



lipid metabolism balance, enrich beneficial bacteria and health-related metabolites in rats.¹⁶ Hence, gut microbiota are a crucial media when functional foods affect immune responses and gut homeostasis.

In this research, to evaluate the relationship between the major types of bioactive components in COL and probiotics, we assessed the impact of crushing pretreatment on nutrient contents in COL and COL-C, including total sugar, protein, flavonoids, and polyphenols. Then, by incubating COL and COL-C with gut microbiota *in vitro*, high-throughput sequencing of 16S rRNA gene was applied to evaluate the variations in the probiotic abundance. The gas chromatography assay was conducted to measure SCFA levels in broth. Finally, a correlation analysis of nutrients, bacteria, and SCFAs was carried out to illustrate the relationship between core taxa, nutrients of COL, and metabolites.

Materials and methods

Materials and chemicals

Liquid samples of the COL (ingredients were not crushed) and COL-C (ingredients were crushed) were obtained from Infinite Co., Ltd (Guangdong, China). Bradford Protein Quantification Kit was purchased from Generay biotech Co., Ltd (Shanghai, China). Standards of rutin, gallic acid, SCFAs (acetate, propionate, butyrate, iso-butyrate, valerate, and iso-valerate) and other general chemicals were obtained from Aladdin Industrial Inc. (Shanghai, China).

Preparation of the COL and COL-C

The compound oral liquid is a liquid dosage form of health food based on the water extract of *Polygoni Multiflori Radix Praeparata* (PMRP) and *Morinda officinalis* (MO). The preparation methods of the COL and COL-C are presented in Fig. 1. In brief, dried PMRP and MO of equal mass were extracted twice with boiling distilled water (1:10, w/v) for 2 h. Then, the extracts were combined and concentrated to obtain compound oral liquid. For the pretreatment of raw ingredients, the COL-C referred to crushing PMRP and MO to 10 mesh for extraction, and COL referred to the extract with raw PMRP and MO used directly.

Measurement of nutrition contents

Total sugar. The total sugar in COL was measured by a phenol-sulfuric acid method described in a previous study with slight modifications:¹⁷ firstly, 500 μL sample liquid was

mixed with 250 μL 5% (w/v) phenol solution. Then, 1250 μL of concentrated sulfuric acid was added and fully mixed. Finally, the absorbance of the mixture was measured at 490 nm. The glucose solutions of 0.01–0.05 mg mL^{-1} concentration were set as the standard.

Proteins. The protein content in COL was estimated by a method using Bradford Protein Quantification Kit.¹⁷ The bovine serum albumin (BSA) solutions of 0.05–0.3 mg mL^{-1} concentration were set as the standard, and the absorbance of the mixture was measured at 595 nm.

Total flavonoids. The total flavonoid in COL was estimated according to a previous study with slight modifications:¹⁸ firstly, 500 μL of sample solution was added into test tubes with 2.0 mL of distilled water. Then, 150 μL of NaNO_2 (50 mg mL^{-1}) was added followed by a 5 s vortex, and after 5 min, 150 μL of AlCl_3 (100 mg mL^{-1}) was added to the mixture following the same agitation and reaction time. Finally, 1 mL of NaOH (1 M) and 1.2 mL of distilled water were added with vortexing and the reaction time was 5 min. An ethanol solutions of rutin at a concentration of 4–24 $\mu\text{g mL}^{-1}$ were set as the standard, and the absorbance of mixture was measured at 510 nm.

Total polyphenols. The total polyphenols in COL were measured by the Folin-Ciocalteu assay according to a previous study with slight modifications:¹⁸ firstly, 1.0 mL sample solution was mixed with 1 mL Folin-Ciocalteu reagent. After the reaction for 2 min, 2.0 mL of Na_2CO_3 (200 mg mL^{-1}) was added and incubated at room temperature for 90 min and protected from light. The absorbance was then measured at 655 nm. The gallic acid solutions at a concentration of 4–20 $\mu\text{g mL}^{-1}$ were set as the standard.

***In vitro* incubation with the gut microbiota.** Fecal sample collection methods were approved by the ethics committee of the First Affiliated Hospital of Guangzhou University of Chinese Medicine (Guangzhou, China), document no. ZYYECK2019-032-XZ-01. Informed consent was obtained from 4 healthy participants (two males and two females aged from 24 to 28) for providing fresh fecal samples. None of them had a history of antibiotic use within 3 months before this study. After collection, the fecal samples were mixed and evenly resuspended in 10 volumes (w/v) of phosphate-buffered saline (PBS) (0.1 M, pH 7.0) to obtain a mixed fecal slurry.

The *in vitro* incubation of the oral liquid by gut microbiota was performed according to a previous study with slight modifications.¹⁹ In brief, the incubation system was based on a basic nutrient growth medium: 2.0 g L^{-1} yeast extract, 2.0 g L^{-1} peptone, 0.1 g L^{-1} NaCl, 0.04 g L^{-1} KH_2PO_4 , 0.04 g L^{-1} K_2HPO_4 , 0.01 g L^{-1} $\text{MgSO}_4 \cdot 7\text{H}_2\text{O}$, 0.01 g L^{-1} CaCl_2 , 2 g L^{-1} NaHCO_3 , 0.02 g L^{-1} haemin, 0.5 g L^{-1} cysteine-HCl, 0.5 g L^{-1} bile salts, 2.0 mL L^{-1} Tween 80, 1.0 mL L^{-1} 1% resazurin solution, and 10 $\mu\text{L L}^{-1}$ vitamin K. Then, 500 μL of COL and COL-C were added into the BNM medium respectively, and the group with added 500 μL of distilled water was set as the control. Finally, 1.0 mL fecal slurry was inoculated in an airtight serum bottle with 9.0 mL BNM broth under N_2 conditions. Incubation was carried out at 37 $^\circ\text{C}$, and samples from 3, 6, 12,

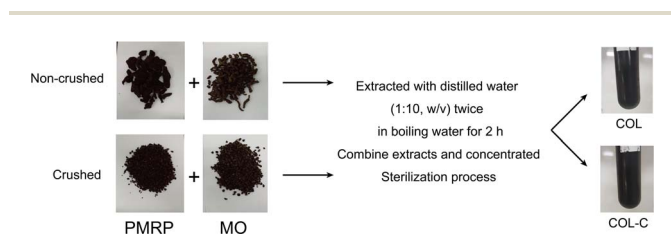


Fig. 1 Preparation process of COL and COL-C.

and 24 h were collected and saved at $-80\text{ }^{\circ}\text{C}$ for further study. Each experiment was performed in triplicate.

16S rRNA gene sequencing and data analysis. High-throughput sequencing of 16S rRNA gene and basic data quality control were performed using a commercial kit from Genesky Biotechnologies Inc. (Shanghai, China). Briefly, total genomic DNA of 24 h samples were extracted using the Power-Soil DNA Isolation Kit according to the manufacturer's instructions (MoBio, Carlsbad, USA). Bacterial genomic DNA was used as the template to amplify the V3–V4 hypervariable region of the 16S rRNA gene with the forward primer (5-CCTACGGGNGGCWGCAG-3) and the reverse primer (5-GACTACHVGGGTATCTAATCC-3). The amplicon was then amplified and sequenced using an Illumina MiSeq PE250 sequencer to generate paired-end reads data.

The obtained raw data of high-throughput sequencing were subjected to quality control and the clustering results were analyzed using the QIIME 2.0 software (version 2019.7).²⁰ After paired-end read merging and filtering, the remaining clean reads were then clustered into operational taxonomic units (OTUs) at a sequence similarity level of 97%. All OTUs were then annotated based on the Ribosomal Database Project (RDP), and the reads per spike-in OTU were counted. Rarefaction analysis, alpha diversities (Shannon, Simpson, Chao1 and ACE indexes) and beta diversities were analysed using R Project (Vegan package, V 3.3.1).

SCFAs detection by gas chromatography (GC). The SCFA contents in the supernatant were detected by a GC process. The liquid sample was centrifuged at 12 000 rpm for 1 min, and 600 μL of the supernatant was acidized with 200 μL 20% H_2SO_4 (v/v) and vortexed adequately for 1 min. Then, 500 μL *n*-butanol was added to the acidized fluid for liquid–liquid extraction, and the mixture was vortexed adequately for 2 min and centrifuged at 10 000 rpm for 1 min. Finally, the upper organic phase was filtered through a 0.22 μm filter membrane for further GC detection.

An Agilent 7820A GC system (Agilent Technologies, Santa Clara, CA, USA) was equipped with a flame ionization detector (FID) and an automatic sampler, a DB-FFAP capillary column (Agilent, 30 m \times 0.25 mm \times 0.25 μm) was used for component separation. The temperature operating conditions of the GC system are as follows: initial column temperature, 80 $^{\circ}\text{C}$, held for 1 min; then 80 $^{\circ}\text{C}$ to 160 $^{\circ}\text{C}$ at a rate of 3 $^{\circ}\text{C min}^{-1}$; and finally, 160 $^{\circ}\text{C}$ to 230 $^{\circ}\text{C}$, held for 1 min. Other parameters were set as follows: injection port temperature, 300 $^{\circ}\text{C}$; FID temperature, 320 $^{\circ}\text{C}$; and injection volume, 1 μL . The flow rates of dry air, hydrogen and nitrogen were 300, 30, and 20 mL min^{-1} , respectively. Each experiment was performed in triplicate.

Statistical analysis. The experimental data are expressed as mean \pm standard deviation (SD) of triplicates. All data were analyzed or plotted using the GraphPad Prism 7.0 software. The differences between the two groups were examined by Student's *t*-test. $P < 0.05$ was regarded as a statistically significant difference. Spearman's correlation coefficient was calculated to evaluate the interaction between nutrients, taxa, and SCFA levels.

Results

Effects of crushing pretreatment on the nutrition constitute of compound oral liquid

The difference of the COL and COL-C was the pretreatment of PMRP and MO. The COL was prepared by raw ingredients, and the COL-C was prepared by 10-meshed crushed ingredients to assess the difference in the dissolving efficiency of contents in the COL. As shown in Table 1, the most abundant nutrient is total sugar. After crushing, the total sugar in COL-C ($18.42 \pm 0.49\text{ mg mL}^{-1}$) exhibited a significant decrease compared with COL ($20.28 \pm 0.61\text{ mg mL}^{-1}$), but the protein content showed a slight but not significant increase in the COL-C. Meanwhile, the crushing pretreatment obviously contributed to the concentration of total flavonoids and polyphenols, showing increases from 1.56 ± 0.02 to $2.22 \pm 0.05\text{ mg mL}^{-1}$ for flavonoids and 2.22 ± 0.06 to $2.98 \pm 0.05\text{ mg mL}^{-1}$ for polyphenols. Since the crushing pretreatment was the only different craft during extraction, we considered that the variation in nutrients in the COL was mainly caused by crushing the raw ingredients.

Effect of compound oral liquid fermentation *in vitro* on gut microbial compositions

The microbial composition in control, COL, and COL-C was measured by 16S rRNA sequencing, and each measurement was conducted in triplicate. The incubated COL and COL-C groups influenced more OTUs of fecal bacteria and they also showed stronger effects on gut microbial taxonomy. The results of the Shannon rarefaction indicated that the deep sequencing covered most of the operational taxonomic units (OTUs) in each sample (Fig. 2a). As the Venn diagram showed (Fig. 2b), a total of 655 OTUs were discovered after sequencing, in which 265, 95, and 78 OTUs were specifically found in control, COL, and COL-C respectively. Unweighted unifrac distance was calculated to reflect the difference in community composition between groups (Fig. 2c). The clustered points in each group showed a well parallelism, and the distinct distance between groups reflected the variation in microbial communities. Moreover, the alpha diversity results were shown in Table 2. The Chao1, ACE, and Shannon indexes in the COL and COL-C groups were significantly lower than those of the control group, while the Simpson index was higher in the COL and COL-C groups. Particularly, compared with COL, the Chao1 and ACE indexes in COL-C were significantly lower after incubation with gut microbiota.

Table 1 Nutrition contents in different pretreatments of the COL^a

Groups	Concentration (mg mL^{-1})			
	Total sugar	Proteins	Flavonoids	Polyphenols
COL	$20.28 \pm 0.61\text{a}$	$0.75 \pm 0.16\text{a}$	$1.56 \pm 0.02\text{a}$	$2.22 \pm 0.06\text{a}$
COL-C	$18.42 \pm 0.49\text{b}$	$0.98 \pm 0.20\text{a}$	$2.22 \pm 0.05\text{b}$	$2.98 \pm 0.05\text{b}$

^a Different lowercase letters indicate significant differences ($P < 0.05$) among different groups.

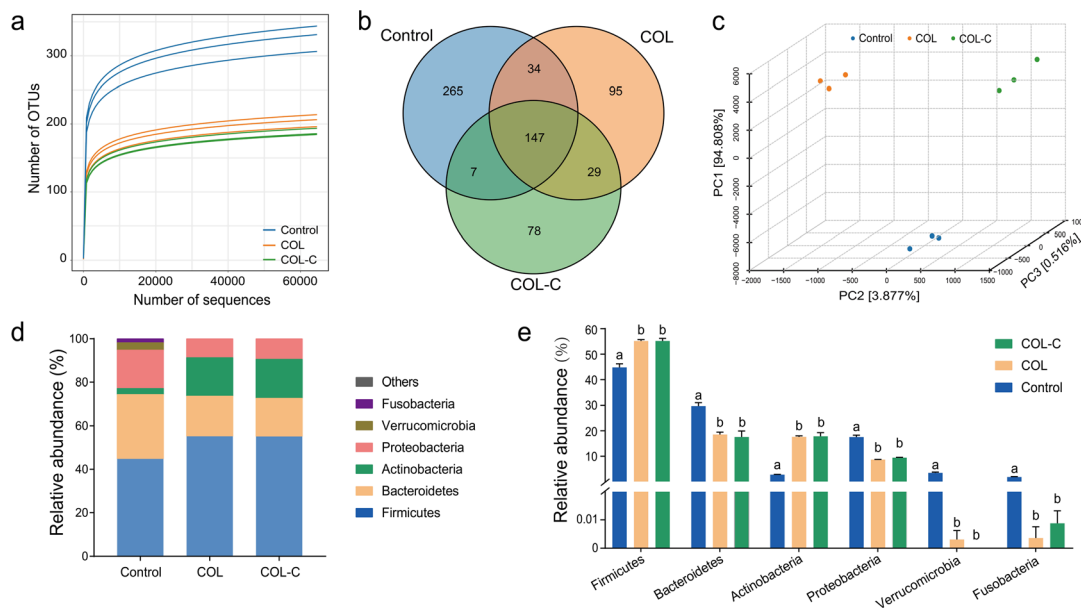


Fig. 2 Gut microbial composition differences in control, COL, and COL-C. (a) Discovered OTU of rarefaction curve. (b) Venn diagram of the overlap at the OTU level. (c) Principal component analysis based on the unweighted unifrac distance. (d) Stacking diagram of abundance at the phylum level. (e) Variations in gut microbiota at the phylum level. The different lowercase letters indicate significant differences ($P < 0.05$) among different groups.

The relative abundance of gut microbiota after incubation is presented in Fig. 2d and e. At the phylum level, gut microbiota consisted mostly of *Firmicutes*, *Bacteroidetes*, *Actinobacteria*, and *Proteobacteria* representing more than 90% of total bacteria. For these phyla, there were similar variations in COL and COL-C groups in comparison with the control group. The abundance of *Bacteroidetes* and *Proteobacteria* were distinctly reduced by the two additives, while the proportions of *Actinobacteria* and *Firmicutes* were increased. Besides, other low-abundance phyla such as *Fusobacteria* and *Verrucomicrobia* almost disappeared after 24 h incubation.

To illustrate the alternations in gut microbiota at a more detailed classification, we further summarized the bacterial abundance changes at the genus level (Fig. 3a). The additive of COL and COL-C both promoted the percentage of several beneficial taxa including *Bifidobacterium*, *Faecalibacterium*, and *Lactobacillus*. In addition, SCFA-producing bacteria such as *Megamonas*, *Phascolarctobacterium*, *Dialister*, and *Prevotella* were highly enriched, while *Coprococcus* was decreased after incubation. Particularly, the abundance of *Lactobacillus*, *Phascolarctobacterium*, *Dialister*, and *Megamonas* had higher enrichment by incubation with the additive COL-C. For the reduced taxa in *Proteobacteria*, the proportions of *Escherichia/Shigella*,

Clostridium XIVa, and *Dorea* were decreased in the COL and COL-C groups compared with the control group, however, little significance was observed between COL and COL-C groups.

Accordingly, the advantage taxa in each group were revealed by LEfSe analysis (Fig. 3b). It was confirmed that beneficial bacteria were significantly enriched in the COL-C group. Apart from the above-mentioned genus, *Bifidobacterium longum*, a well-known probiotic belonging to *Bifidobacterium*, was also identified to be a core taxon. Overall, the changes in these beneficial bacteria might be related to the alternations of nutrients in the COL after crushing the raw ingredients.

Estimation of the functional pathway in compound oral liquid

The metabolic function of gut microbiota in different groups was further predicted using the PICRUSt 2.0 software. As presented in Fig. 4, the abundance of the KEGG pathway was significantly changed by the COL and COL-C. In particular, the pathways of lysine biosynthesis, alanine, aspartate and glutamate metabolism, aminoacyl-tRNA biosynthesis, pantothenate and CoA biosynthesis, peptidoglycan biosynthesis, and pentose phosphate were highly enriched by the COL and COL-C. Besides, some low-abundant pathways such as protein export,

Table 2 Alpha diversity index in different incubation systems^a

Groups	Chao1	ACE	Shannon	Simpson
Control	317.93 ± 20.71a	318.55 ± 20.78a	4.57 ± 0.03a	$(2.04 ± 0.07) × 10^{-2}$ a
COL	200.25 ± 9.17b	200.67 ± 9.30b	3.86 ± 0.01b	$(4.09 ± 0.01) × 10^{-2}$ b
COL-C	181.72 ± 4.70c	181.93 ± 4.54c	3.83 ± 0.03b	$(4.10 ± 0.02) × 10^{-2}$ b

^a Different lowercase letters indicate significant differences ($P < 0.05$) among different groups.

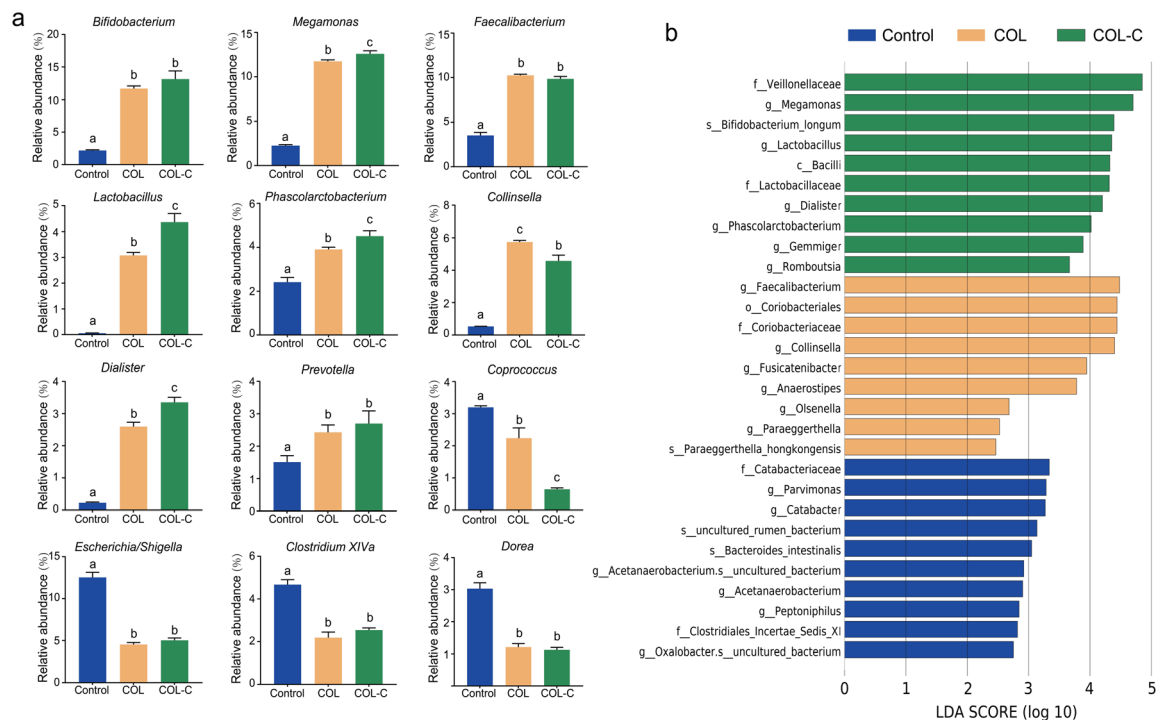


Fig. 3 (a) Alternation of core taxa in gut microbiota composition of control, COL, and COL-C groups at the genus level. (b) LefSe analysis result of differential classification in control, COL, and COL-C groups. The different lowercase letters indicate significant differences ($P < 0.05$) among different groups.

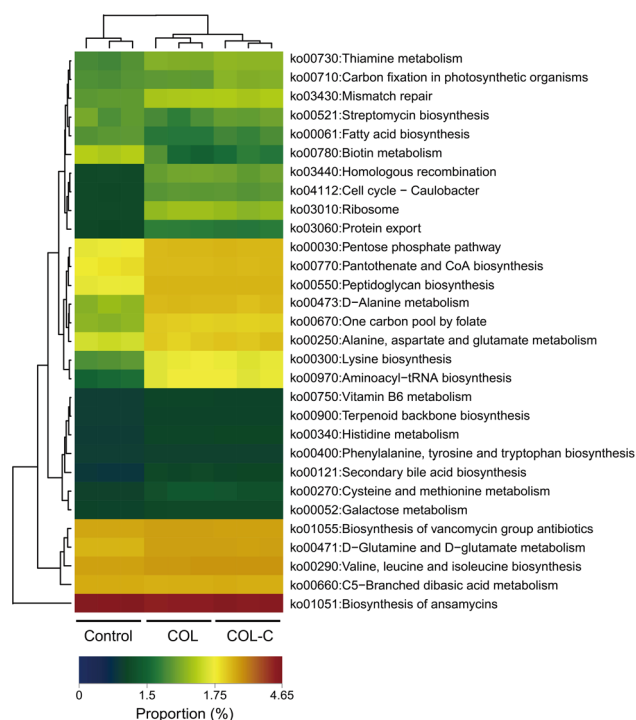


Fig. 4 Variation in the gut microbial functional pathway at level 3 by PICRUSt 2 analysis in the control, COL, and COL-C groups.

ribosome, and homologous recombination were also improved, whereas the only pathway of biotin metabolism was reduced after incubation. Interestingly, although taxonomy variations

were obvious, there were little significant differences in the metabolic functions between the COL and COL-C groups.

Effects of compound oral liquid fermentation *in vitro* on SCFA production

The concentration of the SCFA contents in the broth was detected by the GC assay; the contents of 6 SCFAs, namely, acetate, propionate, butyrate, iso-butyrate, valerate, and iso-valerate were measured for the control, COL, and COL-C groups. As shown in Table 3, acetate, propionate, and butyrate were the predominate SCFAs in the broth. Obviously, the level of acetate in the COL and COL-C groups was significant higher than that in the control group during the whole incubation period. In addition, the COL group had a distinctly higher concentration of acetate than that of COL-C at 6 and 12 h, but the significance disappeared at 24 h. Moreover, additive COL and COL-C significantly improved the levels of propionate and butyrate compared with the control group during the whole incubation period, while no significance was found between them. It was worth noting that the low concentration of iso-butyrate, valerate, and iso-valerate was not found after COL and COL-C incubation. We speculated that the variation in SCFA-producing bacteria changed the fatty acid metabolic flow to the synthesis of acetate, propionate, and butyrate.

Correlations between gut microbial taxa, nutrition contents, and SCFAs

To evaluate whether the SCFA levels and nutrient concentrations were associated with the gut microbiota, Spearman's

Table 3 Concentrations of SCFAs in incubation solutions at different time points^a

SCFAs (mM)	Samples	Anaerobic incubation time (h)			
		3	6	12	24
Acetate	Control	8.97 ± 0.71a	11.97 ± 0.16a	11.55 ± 0.33a	9.25 ± 0.50a
	COL	25.17 ± 0.98b	25.65 ± 0.43c	25.74 ± 0.69c	28.09 ± 0.97b
	COL-C	21.96 ± 1.11b	23.02 ± 0.48b	21.98 ± 0.95b	24.43 ± 1.45b
Propionate	Control	9.09 ± 0.50a	13.38 ± 0.19a	15.81 ± 0.66a	11.47 ± 0.68a
	COL	22.85 ± 1.53b	26.96 ± 0.78b	29.45 ± 1.75b	31.78 ± 0.09b
	COL-C	22.12 ± 0.60b	25.20 ± 1.16b	25.28 ± 0.55b	27.32 ± 1.87b
Butyrate	Control	2.62 ± 0.04a	3.50 ± 0.03a	3.49 ± 0.01a	2.76 ± 0.07a
	COL	5.08 ± 0.31b	7.88 ± 0.47b	9.71 ± 0.21b	9.99 ± 0.11b
	COL-C	4.95 ± 0.12b	7.73 ± 0.33b	9.53 ± 0.03b	9.97 ± 0.16b
Iso-butyrate	Control	Nd	0.12 ± 0.01	1.00 ± 0.02	0.72 ± 0.04
	COL	Nd	Nd	Nd	Nd
	COL-C	Nd	Nd	Nd	Nd
Valerate	Control	Nd	0.17 ± 0.08a	0.28 ± 0.07a	0.12 ± 0.02a
	COL	Nd	Nd	Nd	Nd
	COL-C	Nd	Nd	Nd	Nd
Iso-valerate	Control	0.07 ± 0.01a	0.61 ± 0.01a	2.49 ± 0.10a	1.68 ± 0.09a
	COL	Nd	Nd	Nd	Nd
	COL-C	Nd	Nd	Nd	Nd

^a Different lowercase letters indicate significant differences ($P < 0.05$) among different groups.

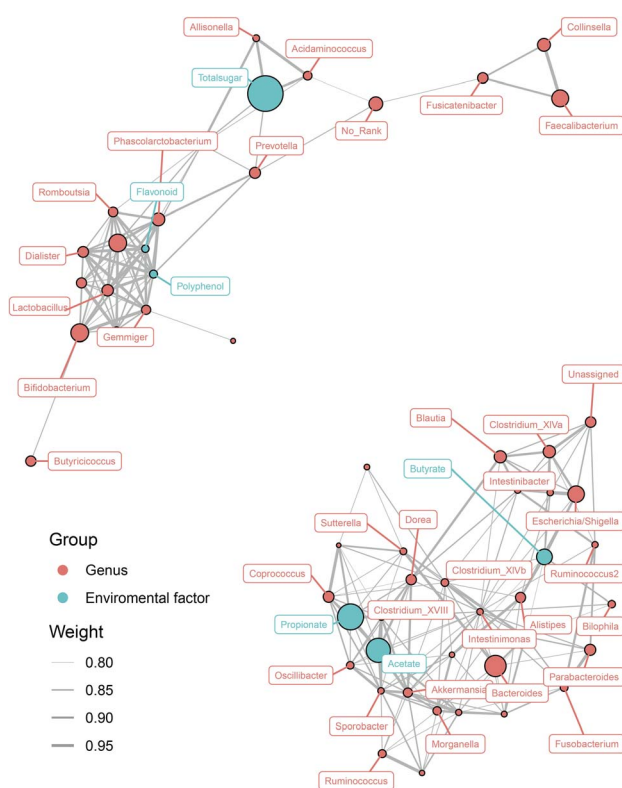


Fig. 5 Interaction of differential gut microbiota at the genus level, short-chain fatty acids, and nutrition contents. The associated networks are presented by Spearman's correlation coefficient (>0.8 or ≤ 0.8). The orange circle represents gut microbiota. The blue circle represents environment factors such as short-chain fatty acids and nutrition contents.

correlation analysis of a network connection diagram was performed, and is shown in Fig. 5. Total sugar was the most abundant nutrient in both COL and COL-C, it was positively correlated with the enrichment of *Prevotella*, *Allisonella*, and *Acidaminococcus*. Interestingly, though the flavonoids and polyphenols were lower than total sugar, they were highly correlated with the improvement of several increasing taxa such as *Phascolarctobacterium*, *Dialister*, *Lactobacillus*, and *Bifidobacterium*. The reduced taxa, including *Dorea*, *Sutterella*, and *Clostridium XIVa*, were negatively correlated with acetate, propionate, and butyrate respectively. However, the strengthening interaction between beneficial bacteria was mainly contributed by the enhanced flavonoids and polyphenols; meanwhile, the abundance of potential pathogens was opposite to the concentration of SCFAs, reflecting an interaction relationship between nutrients, metabolites, and gut microbial composition.

Discussion

The carbohydrates, flavonoids, and polyphenols were verified to be bioactive molecules in functional foods. For instance, plant polysaccharides, especially non-starch polysaccharides, were identified as potential prebiotics to benefit the gut microbial composition and serve as substrates for SCFA production.⁸ Flavonoids and polyphenols often exist in herbs in the form of glycosides or aglycone. More recently, diosmetin-7-*O*-glucoside was mainly converted into diosmetin and acetin by *Escherichia* spp. isolated from the human gut.²¹ Polyphenol compounds had a similar degradation pathway to flavonoids; except hydrolyzing from glycosides, they were metabolized *via* their aglycones yielding smaller substances such as (–)-epigallocatechin gallate and (–)-gallocatechin gallate.²² Our

previous research also indicated that aglycones of glycosides might possess a stronger bioactivity.¹⁹

In this study, crushing pretreatment promoted the dissolution rate of flavonoids and polyphenols, but total sugar was found to be slightly reduced in COL-C. As known to all, crushing herbal medicines could promote the dissolution rate of contents by increasing the contact area between ingredients and solvents.²³ However, as the specific surface area increased, the increase in surface energy might strengthen the adsorbability of granules and affect the dissolution rate of bioactive compounds, which might cause a decrease in total sugar. It was worth noting that herbal flavonoids and polyphenols showed efficient bioactivities *in vitro*. In particular, the 50% inhibitory concentration (IC₅₀) of flavonoids and polyphenols on free radical and cancer cell line was significantly higher than that of polysaccharides according to previous reports.^{24,25} As a result, the dissolving-out amount of nutrients in the COL was enhanced by crushing the ingredients.

Gut microbes play a vital role in host health and disease conditions, and they are closely associated with ingested nutrients in daily diet. Compared with the control group, it was found that COL and COL-C both decreased the abundance of *Proteobacteria*, a phylum containing opportunistic pathogen, especially genera from *Dorea*, *Clostridium* XIVa, and *Escherichia/Shigella*,^{26,27} suggesting a healthy tendency of the gut microbial structure after incubation. Moreover, although there was a high degree of consistency between COL and COL-C on the variation of phylum level, COL-C contributed to some genera such as *Lactobacillus*, *Phascolarctobacterium*, *Dialister*, and *Megamonas* with more efficiency. A previous study revealed that *Lactobacillus* contains abundant probiotics and improved the eradication rate of *Helicobacter pylori* by using four-probiotics regimen.^{28,29} Besides, increases of *Dialister* and *Megamonas* were commonly found during supplementary of prebiotics.^{19,30} Recently, another study has put forward that *Collinsella* may mitigate infections and exacerbation of COVID-19 by generating urso-deoxycholate.³¹ *Prevotella copri*, a strictly anaerobic species belonging to *Prevotella*, was associated with the hypoglycemic effect in diabetic mice.³²

Faecalibacterium and *Bifidobacterium* were the genera enriched both by COL and COL-C. *Faecalibacterium prausnitzii*, known as a live biotherapeutic product, was confirmed to be negatively related to human diseases including inflammatory bowel disease and type 2 diabetes.^{33,34} As a common probiotics in the gut tract, *Bifidobacterium* constituted the main cluster of gut microbiota in early life of infants.³⁵ Meanwhile, it was closely correlated with the metabolism of a variety of prebiotics such as human milk oligosaccharides and galactooligosaccharides.³⁶ It was found that *Bifidobacterium longum*, *Lactobacillus* spp., appeared to be core species in the COL-C group, indicating that COL-C had stronger prebiotic effects than those of COL, which might be related to the enhanced contents of nutrition.

Probiotics helped hydrolyzed plant-derived polysaccharides to produce SCFAs, which play an important role in modulating immunity and protecting intestinal barrier integrity.³⁷ Compared with the control group, the additive COL and COL-C conformably improved the concentration of acetate, propionate, and butyrate in the broth. Similar results were also found

in incubating inulin with gut microbiota *in vitro*. SCFAs are major fermentation products of carbohydrates by gut microbiota or they can be transformed from other microbial metabolites such as amino acids.^{38,39} Hence, we considered that the improved SCFA levels were jointly contributed by supplementary substrates in the COL and metabolism of amino acids, since the synthesis and metabolic function of amino acids were enhanced after incubation. As reported, SCFAs were recognized as a type of health-related metabolite. For instance, acetate and butyrate were confirmed to modulate host immunity through G-protein-coupled receptors and interacted with the immune system *via* the brain-gut axis.^{38,40} Propionate significantly stimulated the release of PYY and GLP-1 from human colonic cells to control the appetite.⁴¹ Consequently, the results suggested that COL had the potential to improve human health by promoting SCFA levels.

Furthermore, we found that the bacterial genera were also related to changes in SCFAs. It was inferred that the enriched *Bifidobacterium* and *Prevotella* increase the acetate production,³⁸ whereas *Dialister* and *Phascolarctobacterium* are the major producers of propionate.⁴² *Faecalibacterium* was identified as a butyrate producer, leading to the generation of butyrate *via* the butyryl-CoA : acetate-CoA transferase pathway.⁴³

Interestingly, the relationship between gut microbiota, nutrients, and SCFAs exhibited polarization. According to Fig. 5, most of beneficial bacteria including *Lactobacillus*, *Bifidobacterium*, *Dialister*, and *Phascolarctobacterium* were co-enriched with flavonoids and polyphenols in the COL, suggesting that the improved nutrient contents were the major elements for probiotics. For another aspect, a great number of taxa were negatively correlated with SCFA production, reflecting that the gut microbial structure might be altered by metabolites from probiotics. However, the gut microbiota was a complex colony, and the active components in functional foods could directly enrich metabolizable bacteria or indirectly modulated their abundance through microbial metabolites. Our future research will focus on the preservation of gut barrier in disease models such as IBD, since the COL-C showed improvements in gut microbial composition and metabolites *in vitro* incubation systems.

Conclusions

In summary, our results indicated that the crushing pretreatment contributed to the dissolving out of flavonoids and polyphenols in compound oral liquid. The COL-C showed stronger probiotic effects to enrich *Lactobacillus*, *Bifidobacterium*, *Dialister*, *Phascolarctobacterium*, *Faecalibacterium*, and other SCFA-producing bacteria. Meanwhile, the COL-C inhibited conditional pathogens to modulate the microbial structure to a healthy tendency. Furthermore, SCFAs including acetate, propionate, and butyrate in the broth were highly expressed by the COL and COL-C, reflecting the potential for maintaining gut immune homeostasis and providing energy for colon cells. Finally, the flavonoids and polyphenols seem to be crucial factors for promoting the growth of probiotics, and carbohydrates in the COL-C served as available substrates for SCFA fermentation. The results offered a new comprehension of

compound oral liquid as functional supplements, and laid the theory foundation for the animal experiments in protecting intestinal health *via* modulating the gut microbiome.

Data availability

The datasets generated during and/or analysed during the current study are available from the corresponding author on reasonable request.

Author contributions

Ruiming Xiao and Hongzhang Chen contributed equally to this article, and carried out most of the experiments, designed the project, analyzed microbiome and metabolic data and composed the manuscript. Hongbei Han helped organized data, carried out GC analysis of the short-chain fatty acids of incubation samples. Guangjuan Luo helped collected the faeces samples, organized ethical review document and helped plot and incubation. Ying Lin supervised to carry out most of the experiments, and revised the manuscript for publication.

Abbreviations

COL	Compound oral liquid
COL-C	Compound oral liquid crushed
SCFA	Short-chain fatty acid
PMRP	Polygoni multiflori radix praeparata
MO	<i>Morinda officinalis</i>
PBS	Phosphate-buffered saline
OTU	Operational taxonomic unit
LEfSe	Linear discriminant analysis effect size
PYY	Peptide tyrosine-tyrosine
GLP-1	Glucagon-like peptide-1
IBD	Inflammatory bowel disease

Conflicts of interest

The authors declare that they have no known competing financial interests or personal relationships that could have appeared to influence the work reported in this paper.

Acknowledgements

All the authors are thankful for the financial support of National Key Research and Development Program of China (Grant No. 2017YFD0400300).

References

- 1 L. Dominguez Diaz, V. Fernandez-Ruiz and M. Camara, *Crit. Rev. Food Sci. Nutr.*, 2020, **60**, 1738–1746.
- 2 J. Huang, L. Ding, W. Tian, H. Zhi, J. Chen, L. Wu, L. Wang, J. Xie, J. Bai, H. Fan, S. Zhao, K. Zhang and J. Zheng, *Microchem. J.*, 2021, **168**, 106399.
- 3 R. Xiao, G. Luo, W. Liao, S. Chen, S. Han, S. Liang and Y. Lin, *npj Science of Food*, 2022, **6**(1), 45.
- 4 K. Moore, L. Howard, C. Brownmiller, I. Gu, S. O. Lee and A. Mauromoustakos, *Food Funct.*, 2019, **10**, 7091–7102.
- 5 S. L. Johnson, R. D. Kirk, N. A. DaSilva, H. Ma, N. P. Seeram and M. J. Bertin, *Metabolites*, 2019, **9**(4), 78.
- 6 V.-L. Truong and W.-S. Jeong, *Food Sci. Hum. Wellness*, 2022, **11**, 502–511.
- 7 F. Zhou, Y. L. Li, X. Zhang, K. B. Wang, J. A. Huang, Z. H. Liu and M. Z. Zhu, *J. Agric. Food Chem.*, 2021, **69**, 14530–14543.
- 8 M. Ho Do, Y. S. Seo and H. Y. Park, *Crit. Rev. Food Sci. Nutr.*, 2021, **61**, 1212–1224.
- 9 M. L. Y. Wan, K. H. Ling, H. El-Nezami and M. F. Wang, *Crit. Rev. Food Sci. Nutr.*, 2019, **59**, 1927–1936.
- 10 A. A. Kolodziejczyk, D. Zheng and E. Elinav, *Nat. Rev. Microbiol.*, 2019, **17**, 742–753.
- 11 R. V. Bubnov, M. Y. Spivak, L. M. Lazarenko, A. Bomba and N. V. Boyko, *EPMA J.*, 2015, **6**, 14.
- 12 Y. Q. Yang, F. Y. Meng, X. Liu, M. Zhang, W. Gu, H. L. Yan, J. Yu and X. X. Yang, *J. Pharm. Pharmacol.*, 2021, **73**, 796–807.
- 13 Z. Yang, J. Hu and M. Zhao, *Carbohydr. Polym.*, 2011, **83**, 1997–2004.
- 14 A. El Kaoutari, F. Armougom, J. I. Gordon, D. Raoult and B. Henrissat, *Nat. Rev. Microbiol.*, 2013, **11**, 497–504.
- 15 W. Zhu, S. Zhou, J. Liu, R. J. C. McLean and W. Chu, *Biomed. Pharmacother.*, 2020, **121**, 109591.
- 16 L. Du, Y. Sun, Q. Wang, L. Wang, Y. Zhang, S. Li, H. Jin, S. Yan and X. Xiao, *Food Res. Int.*, 2021, **144**, 110323.
- 17 G. Chen, M. Xie, P. Wan, D. Chen, H. Ye, L. Chen, X. Zeng and Z. Liu, *Food Chem.*, 2018, **244**, 331–339.
- 18 J. C. Carmona-Hernandez, M. Le, A. M. Idarraga-Mejia and C. H. Gonzalez-Correa, *Molecules*, 2021, **26**(21), 6431.
- 19 R. Xiao, W. Liao, G. Luo, Z. Qin, S. Han and Y. Lin, *ACS Omega*, 2021, **6**, 25486–25496.
- 20 E. Bolyen, J. R. Rideout, M. R. Dillon, N. A. Bokulich, C. C. Abnet, G. A. Al-Ghalith, H. Alexander, E. J. Alm, M. Arumugam, F. Asnicar, Y. Bai, J. E. Bisanz, K. Bittinger, A. Brejnrod, C. J. Brislawn, C. T. Brown, B. J. Callahan, A. M. Caraballo-Rodriguez, J. Chase, E. K. Cope, R. Da Silva, C. Diener, P. C. Dorrestein, G. M. Douglas, D. M. Durall, C. Duvallet, C. F. Edwardson, M. Ernst, M. Estaki, J. Fouquier, J. M. Gauglitz, S. M. Gibbons, D. L. Gibson, A. Gonzalez, K. Gorlick, J. Guo, B. Hillmann, S. Holmes, H. Holste, C. Huttenhower, G. A. Huttley, S. Janssen, A. K. Jarmusch, L. Jiang, B. D. Kaehler, K. B. Kang, C. R. Keefe, P. Keim, S. T. Kelley, D. Knights, I. Koester, T. Kosciolk, J. Kreps, M. G. I. Langille, J. Lee, R. Ley, Y. X. Liu, E. Loftfield, C. Lozupone, M. Maher, C. Marotz, B. D. Martin, D. McDonald, L. J. McIver, A. V. Melnik, J. L. Metcalf, S. C. Morgan, J. T. Morton, A. T. Naimey, J. A. Navas-Molina, L. F. Nothias, S. B. Orchanian, T. Pearson, S. L. Peoples, D. Petras, M. L. Preuss, E. Pruesse, L. B. Rasmussen, A. Rivers, M. S. Robeson II, P. Rosenthal, N. Segata, M. Shaffer, A. Shiffer, R. Sinha, S. J. Song, J. R. Spear, A. D. Swafford, L. R. Thompson, P. J. Torres, P. Trinh, A. Tripathi, P. J. Turnbaugh, S. Ul-Hasan, J. J. J. van der Hooft,

- F. Vargas, Y. Vazquez-Baeza, E. Vogtmann, M. von Hippel, W. Walters, Y. Wan, M. Wang, J. Warren, K. C. Weber, C. H. D. Williamson, A. D. Willis, Z. Z. Xu, J. R. Zaneveld, Y. Zhang, Q. Zhu, R. Knight and J. G. Caporaso, *Nat. Biotechnol.*, 2019, **37**, 852–857.
- 21 M. Zhao, L. Du, J. Tao, D. Qian, E. X. Shang, S. Jiang, J. Guo, P. Liu, S. L. Su and J. A. Duan, *J. Agric. Food Chem.*, 2014, **62**, 11441–11448.
- 22 B. Chen, J. Zhou, Q. Meng, Y. Zhang, S. Zhang and L. Zhang, *Food Funct.*, 2018, **9**, 4858–4864.
- 23 Y. Fan, C. P. Yan, C. Chen, K. F. So, P. Li and L. W. Qi, *J. Pharm. Biomed. Anal.*, 2014, **95**, 213–219.
- 24 Y. Athukorala, K. N. Kim and Y. J. Jeon, *Food Chem. Toxicol.*, 2006, **44**, 1065–1074.
- 25 Q. Ma, J. G. Jiang, X. Yuan, K. Qiu and W. Zhu, *Food Chem. Toxicol.*, 2019, **125**, 422–429.
- 26 H. C. The, D. P. Thanh, K. E. Holt, N. R. Thomson and S. Baker, *Nat. Rev. Microbiol.*, 2016, **14**, 235–250.
- 27 W. Zhou, Y. Yan, J. Mi, H. Zhang, L. Lu, Q. Luo, X. Li, X. Zeng and Y. Cao, *J. Agric. Food Chem.*, 2018, **66**, 898–907.
- 28 N. Viazis, K. Argyriou, K. Kotzampassi, D. K. Christodoulou, P. Apostolopoulos, S. D. Georgopoulos, C. Liatsos, O. Giouleme, K. Koustenis, C. Veretanos, D. Stogiannou, M. Moutzoukis, C. Poutakidis, Mylonas II, I. Tseti and G. J. Mantzaris, *Nutrients*, 2022, **14**(3), 632.
- 29 R. Ashraf and N. P. Shah, *Crit. Rev. Food Sci. Nutr.*, 2014, **54**, 938–956.
- 30 J. Mou, Q. Li, W. Shi, X. Qi, W. Song and J. Yang, *Carbohydr. Polym.*, 2020, **228**, 115359.
- 31 M. Hirayama, H. Nishiwaki, T. Hamaguchi, M. Ito, J. Ueyama, T. Maeda, K. Kashihara, Y. Tsuboi and K. Ohno, *PLoS One*, 2021, **16**, e0260451.
- 32 P. Kovatcheva-Datchary, A. Nilsson, R. Akrami, Y. S. Lee, F. De Vadder, T. Arora, A. Hallen, E. Martens, I. Bjorck and F. Backhed, *Cell Metab.*, 2015, **22**, 971–982.
- 33 M. C. Mentella, F. Scaldaferri, M. Pizzoferrato, A. Gasbarrini and G. A. D. Miggiano, *Nutrients*, 2020, **12**(4), 944.
- 34 N. Tai, F. S. Wong and L. Wen, *Rev. Endocr. Metab. Disord.*, 2015, **16**, 55–65.
- 35 M. Derrien, A. S. Alvarez and W. M. de Vos, *Trends Microbiol.*, 2019, **27**, 997–1010.
- 36 H. Li, J. A. Lane, J. Chen, Z. Lu, H. Wang, S. Dhital, X. Fu, Q. Huang, F. Liu and B. Zhang, *Carbohydr. Polym.*, 2022, **287**, 119322.
- 37 J. Huo, Z. Wu, W. Sun, Z. Wang, J. Wu, M. Huang, B. Wang and B. Sun, *J. Agric. Food Chem.*, 2022, **70**, 711–735.
- 38 A. Koh, F. De Vadder, P. Kovatcheva-Datchary and F. Backhed, *Cell*, 2016, **165**, 1332–1345.
- 39 E. P. Neis, C. H. Dejong and S. S. Rensen, *Nutrients*, 2015, **7**, 2930–2946.
- 40 K. J. O’Riordan, M. K. Collins, G. M. Moloney, E. G. Knox, M. R. Aburto, C. Fulling, S. J. Morley, G. Clarke, H. Schellekens and J. F. Cryan, *Mol. Cell. Endocrinol.*, 2022, **546**, 111572.
- 41 E. S. Chambers, A. Viardot, A. Psichas, D. J. Morrison, K. G. Murphy, S. E. Zac-Varghese, K. MacDougall, T. Preston, C. Tedford, G. S. Finlayson, J. E. Blundell, J. D. Bell, E. L. Thomas, S. Mt-Isa, D. Ashby, G. R. Gibson, S. Kolida, W. S. Dhillo, S. R. Bloom, W. Morley, S. Clegg and G. Frost, *Gut*, 2015, **64**, 1744–1754.
- 42 P. Louis, G. L. Hold and H. J. Flint, *Nat. Rev. Microbiol.*, 2014, **12**, 661–672.
- 43 E. J. Laserna-Mendieta, A. G. Clooney, J. F. Carretero-Gomez, C. Moran, D. Sheehan, J. A. Nolan, C. Hill, C. G. M. Gahan, S. A. Joyce, F. Shanahan and M. J. Claesson, *J. Crohns Colitis*, 2018, **12**, 204–216.