

# Color light-emitting diode reflection topography: validation of keratometric repeatability in a large sample of wide cylindrical-range corneas

Anastasios John  
Kanellopoulos<sup>1,2</sup>  
George Asimellis<sup>1</sup>

<sup>1</sup>LaserVision.gr Clinical and Research  
Eye Institute, Athens, Greece;

<sup>2</sup>New York University Medical School,  
New York, NY, USA

**Purpose:** To investigate repeatability of steep and flat keratometry measurements, as well as astigmatism axis in cohorts with normal range and regular astigmatic such as: eyes following laser-assisted in situ keratomileusis (LASIK) and normal population, as well as cohorts of high and irregular astigmatism such as keratoconic eyes, and keratoconic eyes following corneal collagen cross-linking, employing a novel corneal reflection topography device.

**Methods:** Steep and flat keratometry and astigmatism axis measurement repeatability was investigated employing a novel multicolored-spot reflection topographer (Cassini) in four study groups, namely a post myopic LASIK-treated Group A, a keratoconus Group B, a post-CXL keratoconus Group C, and a control Group D of routine healthy patients. Three separate, maps were obtained employing the Cassini, enabling investigation of the intra-individual repeatability by standard deviation. Additionally we investigated in all groups, the Klyce surface irregularity indices for keratoconus, the SAI (surface asymmetry index) and the SRI (surface regularity index).

**Results:** Flat keratometry repeatability was  $0.74 \pm 0.89$  (0.03 to 5.26) diopters (D) in the LASIK Group A,  $0.88 \pm 1.45$  (range minimum to maximum, 0.00 to 7.84) D in the keratoconic Group B, and  $0.71 \pm 0.94$  (0.02 to 6.23) D in the cross-linked Group C. The control Group D had flat keratometry repeatability  $0.36 \pm 0.46$  (0.00 to 2.71) D. Steep keratometry repeatability was  $0.64 \pm 0.82$  (0.01 to 4.81) D in the LASIK Group A,  $0.89 \pm 1.22$  (0.02 to 7.85) D in the keratoconic Group B, and  $0.93 \pm 1.12$  (0.04 to 5.93) D in the cross-linked Group C. The control Group D had steep keratometry repeatability  $0.41 \pm 0.50$  (0.00 to 3.51) D. Axis repeatability was  $3.45 \pm 1.62^\circ$  (0.38 to  $7.78^\circ$ ) for the LASIK Group A,  $4.12 \pm 3.17^\circ$  (0.02 to  $12.13^\circ$ ) for the keratoconic Group B, and  $3.20 \pm 1.99^\circ$  (0.17 to  $8.61^\circ$ ) for the cross-linked Group C. The control Group D had axis repeatability  $2.16 \pm 1.39^\circ$  (0.05 to  $5.86^\circ$ ). The SAI index measurement repeatability was  $0.33 \pm 0.40$  (0.01 to 2.31) in the post-LASIK Group A,  $0.39 \pm 0.75$  (0.00 to 7.15) in the keratoconic Group B, and  $0.43 \pm 0.56$  (0.05 to 3.50) in the keratoconus post-CXL Group C. The control group had SAI measurement repeatability of  $0.26 \pm 0.30$  (0.00 to 2.39). The SRI index repeatability was  $0.22 \pm 0.17$  (0.01 to 0.96) for post-LASIK Group A,  $0.20 \pm 0.18$  (0.00 to 1.07) in keratoconic Group B, and  $0.13 \pm 0.09$  (0.00 to 0.45) in the keratoconus post-CXL Group C. The control Group D had SRI measurement repeatability of  $0.23 \pm 0.16$  (0.00 to 0.75).

**Conclusion:** This novel corneal topography device appears to offer very high specificity in estimating corneal keratometry and specific corneal irregularity indices, even in topographically challenging corneas such as LASIK treated, keratoconic, and cross-linked.

**Keywords:** LED topography, point-source topography, VU topographer, axis of astigmatism, Cassini topographer, steep meridian, surface regularity index, surface asymmetry index, form factor

Correspondence: Anastasios John  
Kanellopoulos  
LaserVision.gr Clinical and Research  
Eye Institute, 17 Tsocha Street,  
Athens, Greece 11521  
Tel +30 210 7472777  
Fax +30 210 7472789  
Email ajk@brilliantvision.com

## Introduction

Corneal topographers provide qualitative characteristics and quantitative metrics of the anterior corneal surface,<sup>1</sup> transforming raw data into color-coded dioptic power-scale

refractive and curvature maps. In addition, elevation maps can be derived by slope measurement data. Specific topography indices associated with corneal pathology have also been introduced by topography – analysis algorithms.<sup>2</sup>

While Placido-disc systems have been the mainstream of videokeratoscopy,<sup>3–6</sup> certain restrictions exist with this technology,<sup>7</sup> such as the limited ability to identify contour topographic changes.<sup>8</sup> To override these limitations, topography systems with color-coded specular reflection forward ray-tracing have been proposed<sup>9</sup> as alternatives to Placido-ring imaging,<sup>10</sup> enabling, among other things, the proper imaging of radial, in addition to only contour topographic, changes.

The “Cassini” (i-Optics, The Hague, the Netherlands) system is a novel topographer utilizing a multicolor (red, yellow, and green) spot pattern consisting of hundreds of light-emitting diode (LED) spots (up to 700) projected on the cornea. Image-processing software locates feature points in the reflected images and accounts for smearing and deformation in irregular corneas. The system has been recently introduced<sup>11</sup> and has received US Food and Drug Administration approval for clinical topography.

Due to their novelty, the clinical validation of such systems and their clinical implications have yet to be investigated and compared with those of established topographers. We have recently reported cases of forme fruste keratoconus<sup>12</sup> and central corneal scar<sup>13</sup> in which the Cassini device appeared to be more sensitive than established cornea imaging devices.

The aim of the work reported here was to evaluate the repeatability measurement of this newly introduced device in a large number of LASIK-treated eyes, keratoconic eyes, and eyes treated with anterior-surface normalization and cross-linking. Specifically, we investigated the repeatability of measurement of the following parameters: flat and steep meridian keratometry, axis of astigmatism, form factor, surface regularity index (SRI), and surface asymmetry index (SAI).

## Materials and methods

This observational, prospective study received approval by the ethics committee of our institution, adherent to the tenets of the Declaration of Helsinki. Informed written consent was obtained from each subject at the time of the first clinical visit.

## Inclusion criteria

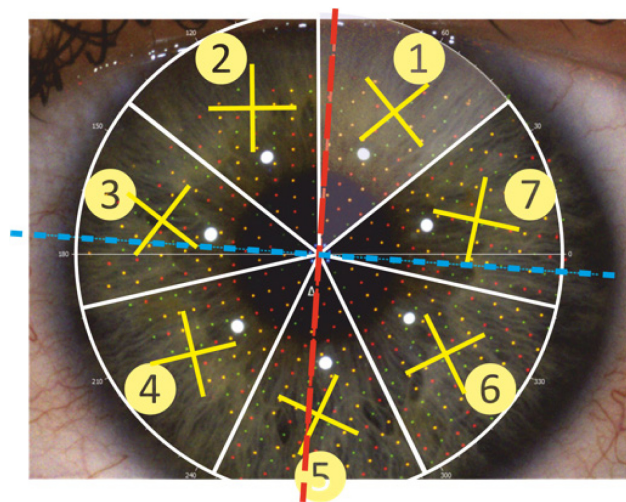
The study group consisted of 373 different patients. One eye was selected randomly from each patient to be included in the study. The following study groups were formed: Group A ( $n_A=51$  different eyes) consisted of eyes that had received

myopic laser-assisted in situ keratomileusis (LASIK) treatment. Group B ( $n_B=95$ ) consisted of untreated keratoconic eyes; the keratoconus condition had been previously determined as being grade 1 or more on the Amsler–Kruemeich keratoconus severity scale, as determined by Scheimpflug imaging. Group C ( $n_C=47$ ) consisted of eyes treated with partial anterior-surface topography-guided excimer ablation and same-session high-fluence collagen cross-linking, in a procedure known as the “Athens Protocol”.<sup>14</sup> In addition, a control Group D ( $n_D=180$ ) was formed consisting of subjects having no current or past ocular pathology other than refractive error, no other previous surgery, no epithelial defects, and no present irritation or dry-eye disorder, all confirmed by a complete ophthalmologic evaluation.

## Instrumentation

The system employed in this study was the Cassini, a multicolored-spot reflection corneal topographer. The system projects approximately 700 LED point-sources onto the cornea and evaluates their reflection pattern, extending to up to 8.5 mm of the corneal diameter area as raw data. These spots are grouped in seven “septima” segments with a specific Cartesian array arrangement within each segment, as illustrated in Figure 1.

The system consequently provides anterior-surface topography results, including axial and tangential curvature, refractive power, and elevation maps. The user may select from among various color-coded scales (Figure 2), including the American Style, the ISO (International Organization for



**Figure 1** Raw data image as obtained by the Cassini multicolored-spot reflection topographer.

**Notes:** The septima sections are numbered sequentially, along with a cross indicating the prime orientation of the 100 spots within the section. The red dashed line indicates the steep axis; the blue dotted line, the flat axis.

Standardization [French]) 19980, the Oculus, and the topographic modeling system scale.<sup>15</sup> The system calculates flat and steep keratometry (diopters [D]), axis orientation ( $^{\circ}$ ), and related astigmatism (D), and identifies the location of the corneal apex. Four topographic indices<sup>16</sup> relating to surface asphericity, and three keratoconus indices – form factor, the SRI, and SAI (created by Dr Stephen Klyce)<sup>17</sup> – are also provided. Acquisition quality was evaluated by four image quality indices. The system employed in the study ran on software version 1.2.0 (updated September 2013).

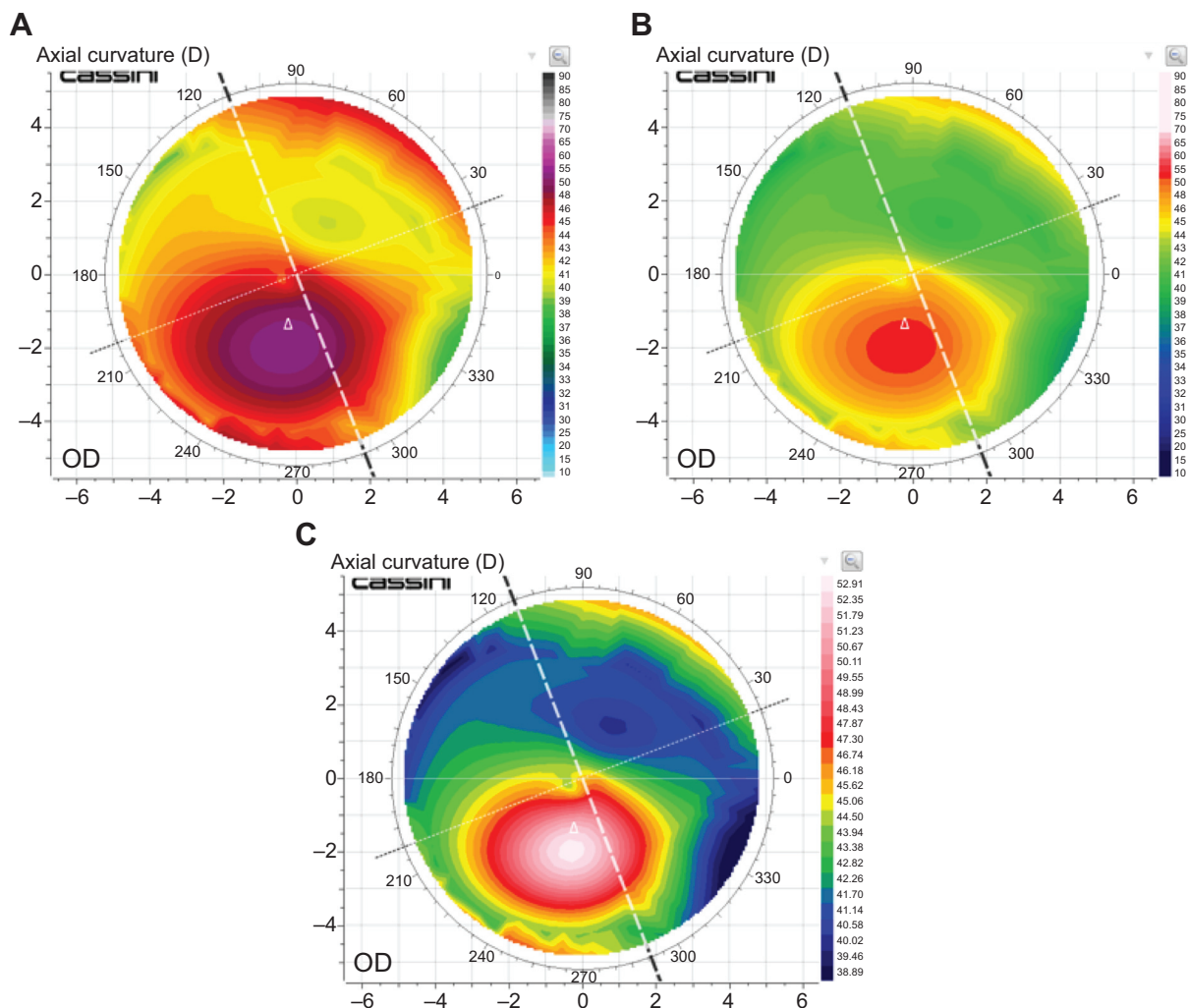
## Data collection and analysis

Three successive acquisitions, centered on the pupil, were performed in each case (eye), assuring that each acquisition had at least 75% coverage, as reported by the quality factor. In each acquisition, the data collected were: flat and steep keratometry

(in diopters, D), axis of steep keratometry (in degrees,  $^{\circ}$ ), form factor, and the indices SRI and SAI (both unit-less). The repeatability of measurement was assessed by the standard deviation of the three values of each parameter investigated as obtained by the three consecutive acquisitions performed in each eye. Statistical analysis was performed using Minitab software (v 16.2.3; MiniTab Ltd, Coventry, UK).

## Results

Post-myopic LASIK Group A, of the 51 eyes included, there were 24 male (47%) and 27 female (53%). Mean subject age at the time of examination was  $35.05 \pm 8.11$  (24 to 49) years of age. Mean value of flat keratometry was  $38.20 \pm 4.50$  (23.93 to 45.57) D, of steep keratometry was  $39.50 \pm 4.23$  (29.28 to 47.04) D, of steep axis was  $87.78 \pm 42.09^{\circ}$  (4.42 to  $179.75^{\circ}$ ), of form factor was  $2.62 \pm 2.18$  (0.07 to 10.61), of



**Figure 2** Axial curvature maps.

**Notes:** In this example from the keratoconic group C, the same axial map is illustrated in three different color scales, according to (A) the oculus, (B) the KlyceUSS, and (C) the Normalized ISO 19980 color scale.

**Abbreviations:** D, diopters; OD, optical density.

SRI was  $1.60 \pm 0.78$  ( $-0.11$  to  $3.52$ ), and of SAI was  $1.01 \pm 0.98$  ( $0.12$  to  $6.31$ ). Descriptive statistics of these values as well as of those from Groups B, C, and control Group D are reported in Table 1.

The keratoconic Group B consisted of 95 eyes (55.7% male; eye laterality 47.3% right). Mean patient age was  $30.72 \pm 7.98$  (17 to 45) years of age. Mean value of flat keratometry was  $42.45 \pm 3.90$  (31.00 to 53.98) D, of steep keratometry was  $45.71 \pm 3.65$  (39.49 to 58.07) D, of steep axis was  $93.85 \pm 46.78^\circ$  ( $1.15$  to  $179.79^\circ$ ), of form factor was  $2.96 \pm 1.96$  ( $-0.05$  to  $10.47$ ), of SRI was  $1.88 \pm 0.71$  ( $-0.26$  to  $3.60$ ), and of SAI was  $2.96 \pm 2.89$  (0.10 to 20.47).

The cross-linked Group C consisted of 47 eyes, belonging to 29 male and 11 female patients; 25 eyes were right and 22 left. Mean patient age was  $27.45 \pm 7.46$  (17 to 49) years of age. Mean value of flat keratometry was  $43.29 \pm 4.22$  (34.79 to 53.75) D, of steep keratometry was  $46.39 \pm 4.72$  (35.43 to 57.52) D, of steep axis was  $92.51 \pm 39.43^\circ$  ( $13.00$  to  $179.23^\circ$ ), of form factor was  $2.42 \pm 1.91$  ( $-0.84$  to  $7.27$ ), of SRI was  $2.09 \pm 0.63$  (0.13 to 3.25), and of SAI was  $3.02 \pm 2.33$  (0.18 to 10.31).

The control Group D consisted of 180 eyes, belonging to 55 male and 52 female patients; 92 eyes were right and 88 left. Mean patient age was  $40.04 \pm 16.86$  (16 to 61) years of age. Mean value of flat keratometry was  $42.83 \pm 2.02$  (32.36 to 50.94) D, of steep keratometry was  $44.35 \pm 2.17$  (33.48 to 54.01) D, of steep axis was  $91.85 \pm 27.15^\circ$  ( $0.15$  to  $179.86^\circ$ ), of form

factor was  $0.96 \pm 0.63$  ( $-0.20$  to  $6.30$ ), of SRI was  $0.91 \pm 0.62$  ( $-0.46$  to  $3.01$ ), and of SAI was  $0.61 \pm 0.65$  ( $-0.11$  to  $5.38$ ).

Specifically, flat keratometry repeatability was  $0.74 \pm 0.89$  (0.03 to 5.26) D in the LASIK Group A,  $0.88 \pm 1.45$  (0.00 to 7.84) D in the keratoconic Group B, and  $0.71 \pm 0.94$  (0.02 to 6.23) D in the cross-linked Group C. The control Group D had flat keratometry repeatability of  $0.36 \pm 0.46$  (0.00 to 2.71) D. Steep keratometry repeatability was  $0.64 \pm 0.82$  (0.01 to 4.81) D in the LASIK Group A,  $0.89 \pm 1.22$  (0.02 to 7.85) D in the keratoconic Group B, and  $0.93 \pm 1.12$  (0.04 to 5.93) D in Group C. The control Group D had steep keratometry repeatability of  $0.41 \pm 0.50$  (0.00 to 3.51) D. Axis repeatability was  $3.45 \pm 1.62^\circ$  ( $0.38$  to  $7.78^\circ$ ) for the LASIK Group A,  $4.12 \pm 3.17^\circ$  ( $0.02$  to  $12.13^\circ$ ) for the keratoconic Group B, and  $3.20 \pm 1.99^\circ$  ( $0.17$  to  $8.61^\circ$ ) for the Athens Protocol Group C. The control Group D had axis repeatability of  $2.16 \pm 1.39^\circ$  ( $0.05$  to  $5.86^\circ$ ). Figure 3 presents box plots illustrating steep and flat keratometry and axis measurement repeatability. The repeatability results are also reported in Table 2.

The form factor measurement repeatability was  $0.29 \pm 0.32$  (0.00 to 1.69) in the LASIK Group A,  $0.42 \pm 0.42$  (0.00 to 2.03) in the keratoconic Group B, and  $0.46 \pm 0.50$  (0.02 to 1.85) in the cross-linked Group C. The control Group D had form factor repeatability of  $0.12 \pm 0.15$  (0.00 to 1.06) (Figure 4). The SAI index measurement repeatability was  $0.33 \pm 0.40$  (0.01 to 2.31) in the LASIK Group A,  $0.39 \pm 0.75$  (0.00 to 7.15) in the keratoconic Group B, and  $0.43 \pm 0.56$

**Table 1** Descriptive statistics of flat and steep keratometry (diopters [D]), axis ( $^\circ$ ), form factor, surface regularity index (SRI), and surface asymmetry index (SAI) measurements for the control group and the three study groups

Group	K flat (D)	K steep (D)	Steep axis ( $^\circ$ )	Form factor (k)	SRI	SAI
Control						
Mean	42.83	44.35	91.85	0.96	0.91	0.61
SD	2.02	2.17	27.15	0.63	0.62	0.65
Min	32.36	33.48	0.15	-0.20	-0.46	-0.11
Max	50.94	54.01	179.86	6.30	3.01	5.38
Group A (LASIK)						
Mean	38.20	39.50	87.78	2.62	1.60	1.01
SD	4.50	4.23	42.09	2.18	0.78	0.98
Min	23.93	25.28	4.42	0.07	-0.11	0.12
Max	45.57	47.04	179.75	10.61	3.52	6.31
Group B (keratoconus)						
Mean	42.45	45.71	93.85	2.96	1.88	2.96
SD	3.90	3.65	46.78	1.96	0.71	2.89
Min	31.00	39.49	1.15	-0.05	-0.26	0.10
Max	53.98	58.07	179.79	10.47	3.60	20.47
Group C (Athens Protocol)						
Mean	43.29	46.39	95.51	2.42	2.09	3.02
SD	4.22	4.72	39.43	1.91	0.63	2.33
Min	34.79	35.43	13.00	-0.84	0.13	0.18
Max	53.75	57.52	179.23	7.27	3.25	10.31

**Abbreviations:** LASIK, laser-assisted in situ keratomileusis; max, maximum; min, minimum; SD, standard deviation; K, keratometry; D, diopters.



(0.05 to 3.50) in the cross-linked Group C. The control group had SAI measurement repeatability of  $0.26 \pm 0.30$  (0.00 to 2.39). The SRI index repeatability was  $0.22 \pm 0.17$  (0.01 to 0.96) for LASIK Group A,  $0.20 \pm 0.18$  (0.00 to 1.07) in keratoconic Group B, and  $0.13 \pm 0.09$  (0.00 to 0.45) in the cross-linked Group C. The control Group D had SRI measurement repeatability of  $0.23 \pm 0.16$  (0.00 to 0.75).

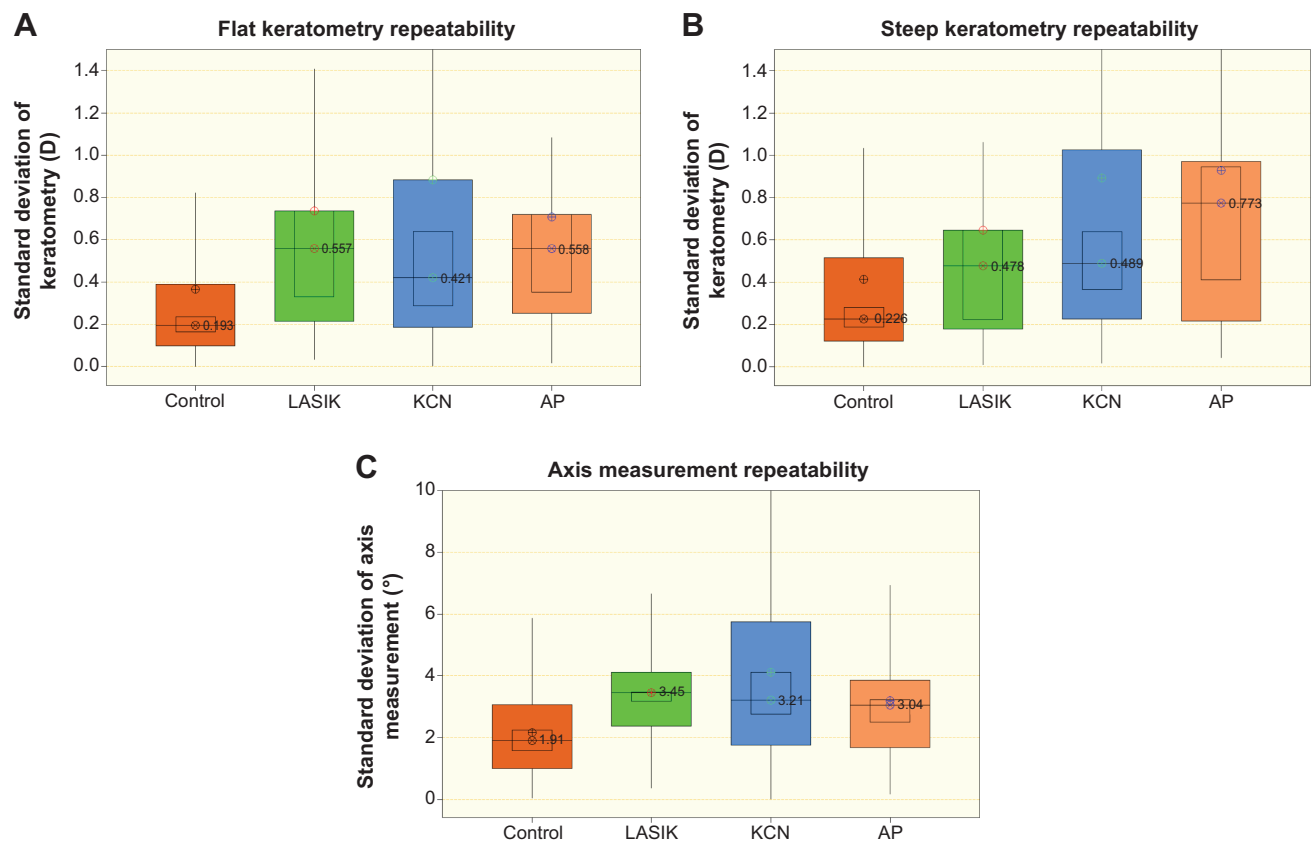
## Discussion

There are many advantages justifying the widespread use of Placido-ring based topography systems, such as the noncontact measurement of the single-shot capture, which reduces motion artifacts. However, there is a number of limitations associated with Placido topography, including the skew-ray error,<sup>18,19</sup> lower data reliability at the corneal center, and susceptibility to error in areas of abrupt corneal elevation changes.<sup>20,21</sup> Specifically, when reconstructing the anterior corneal surface, the numerical algorithms employed in commercially available Placido-disc topographers neglect skew-ray reflections,<sup>22</sup> leading to inaccuracy in reconstructing non-rotationally symmetric corneas.<sup>23</sup> The new modality

introduced by the Cassini topographer aims to avoid these two critical limitations.

The work presented here is an investigation of this novel device which is currently under evaluation by our team. We chose to focus on a very specific metric, that of the repeatability of measurement in various groups of several clinical settings. We have already reported<sup>12,13</sup> early clinical case reports of this device in specific challenging cases in which other established devices have failed to properly image the cornea.

In the present study, we observed the distributions and repeatability of keratometric, axis, and three qualitative indices associated with anterior corneal surface. The distributions measured in the control group were of the same range reported in the literature,<sup>24</sup> the keratomeries encountered in the keratoconic- and Athens Protocol-treated eyes were also within the same range reported in previous work by our team employing Placido topography<sup>21</sup> and Scheimpflug imaging technologies.<sup>25</sup> The anterior-surface indices were also within the range of SAI and SRI measurements reported in keratoconic eyes.<sup>26</sup> The keratometric repeatability was under 0.5 D in the control group, 0.7–0.9 D in the keratoconic and



**Figure 3** Box plots illustrating steep and flat keratometry and axis measurement repeatability.

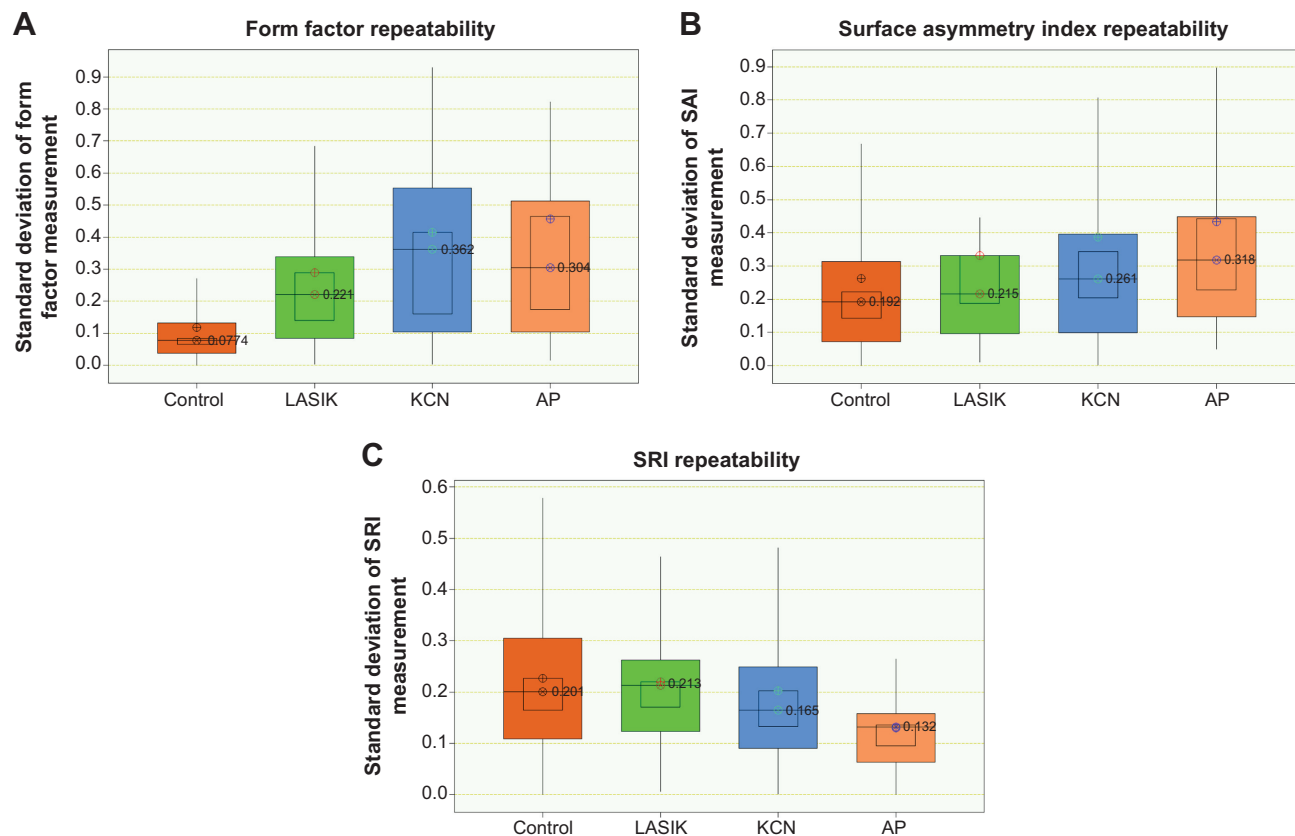
**Notes:** Group A, laser-assisted in situ keratomileusis (LASIK); Group B, keratoconus (KCN); Group C, Athens Protocol (AP); and Group D, control. Numerical indicators correspond to median values. **(A)** Comparative flat keratometry repeatability in all groups; **(B)** comparative steep keratometry repeatability in all groups; **(C)** comparative axis measurement repeatability in all groups.

**Abbreviation:** D, diopters.

**Table 2** Repeatability of flat and steep keratometry (diopters [D]), axis (°), form factor, surface regularity index (SRI), and surface asymmetry index (SAI) measurements for the control group and the three study groups

Group	K flat (D)	K steep (D)	Steep axis (°)	Form factor (k)	SRI	SAI
Control						
Mean	0.36	0.41	2.16	0.12	0.23	0.26
SD	0.46	0.50	1.39	0.15	0.16	0.30
Min	0.00	0.00	0.05	0.00	0.00	0.00
Max	2.71	3.51	5.86	1.06	0.75	2.39
Group A (LASIK)						
Mean	0.74	0.64	3.45	0.29	0.22	0.33
SD	0.89	0.82	1.62	0.32	0.17	0.40
Min	0.03	0.01	0.38	0.00	0.01	0.01
Max	5.26	4.81	7.78	1.69	0.96	2.31
Group B (keratoconic)						
Mean	0.88	0.89	4.12	0.42	0.20	0.39
SD	1.45	1.22	3.17	0.42	0.18	0.75
Min	0.00	0.02	0.02	0.00	0.00	0.00
Max	7.84	7.85	12.13	2.03	1.07	7.15
Group C (Athens Protocol)						
Mean	0.71	0.93	3.20	0.46	0.13	0.43
SD	0.94	1.12	1.99	0.50	0.09	0.56
Min	0.02	0.04	0.17	0.02	0.00	0.05
Max	6.23	5.93	8.61	1.85	0.45	3.50

**Abbreviations:** LASIK, laser-assisted in situ keratomileusis; max, maximum; min, minimum; SD, standard deviation; K, keratometry; D, diopters.



**Figure 4** Box plots illustrating form factor, surface asymmetry index (SAI), and surface regularity index (SRI) measurement repeatability.

**Notes:** Group A, laser-assisted in situ keratomileusis (LASIK); Group B, keratoconus (KCN); Group C, Athens Protocol (AP); and Group D, control. Numerical indicators correspond to median values. **(A)** Comparative form factor repeatability in all groups; **(B)** comparative SAI repeatability in all groups; **(C)** comparative SRI repeatability in all groups.

cross-linked eyes, and 0.65–0.75 D in the LASIK-treated eyes. Axis measurement repeatability was under 2.5° in the control group, in the range of under 4° in the keratoconic and cross-linked eyes, and approximately 3.5° in the LASIK-treated eyes. Obviously, the sensitivity to centration in the keratoconic and LASIK-treated eyes could be a reason for the larger fluctuation among values, in comparison to the control group. In the LASIK-treated group, the surface analysis was also complex compared with the spherical corneas encountered in the control group, due to the central flattening as a result of the excimer ablation performed.

Comparison with the values reported in the literature suggests that the findings herein are quite comparable to established corneal-screening devices such as standard manual keratometry,<sup>27,28</sup> Placido topography,<sup>29</sup> the Orbscan II (Bausch & Lomb, Rochester, NY, USA), the Pentacam (Oculus, Wetzlar, Germany), the Galilei (Ziemer Ophthalmic Systems AG, Port, Switzerland),<sup>30</sup> and the Sirius (CSO Costruzione Strumenti Oftalmici, Scandicci, Italy).<sup>31</sup> For example, the standard deviation of the test–retest reliability in the size of corneal astigmatism was 0.293 D as reported in automated keratometry measurements.<sup>32</sup>

## Conclusion

The Cassini demonstrated extreme measurement precision in terms of sensitivity and specificity. It appears to precisely measure irregular corneas, both in keratometry and axis. Perhaps more importantly it appears to precisely measure normal and even post-myopic LASIK corneas, expected to have minimal astigmatism which poses a challenging diagnostic measurement.

## Disclosure

AJK has held consultant/advisory positions with Alcon/Wave-Light, Avedro, i-Optics, Allergan, Inc., and KeraMed Inc. The authors declare no other conflicts of interest in this work.

## References

- Courville CB, Smolek MK, Klyce SD. Contribution of the ocular surface to visual optics. *Exp Eye Res.* 2004;78(3):417–425.
- Holladay JT. Keratoconus detection using corneal topography. *J Refract Surg.* 2009;25(10 Suppl):S958–S962.
- Alonso-Caneiro D, Iskander DR, Collins MJ. Estimating corneal surface topography in videokeratoscopy in the presence of strong signal interference. *IEEE Trans Biomed Eng.* 2008;55(10):2381–2387.
- Read SA, Collins MJ, Iskander DR, Davis BA. Corneal topography with Scheimpflug imaging and videokeratography: comparative study of normal eyes. *J Cataract Refract Surg.* 2009;35(6):1072–1081.
- Shirayama M, Wang L, Weikert MP, Koch DD. Comparison of corneal powers obtained from 4 different devices. *Am J Ophthalmol.* 2009;148:528–535.e1.
- Mejía-Barbosa Y, Malacara-Hernández D. A review of methods for measuring corneal topography. *Optom Vis Sci.* 2001;78(4):240–253.
- Seitz B, Behrens A, Langenbacher A. Corneal topography. *Curr Opin Ophthalmol.* 1997;8(4):8–24.
- Rand RH, Howland HC, Applegate RA. Mathematical model of a Placido disk keratometer and its implications for recovery of corneal topography. *Optom Vis Sci.* 1997;74(11):926–930.
- Vos FM, van der Heijde RG, Spoelder HJ, van Stokkum IH, Groen FC. A new instrument to measure the shape of the cornea based on pseudorandom color coding. *IEEE Trans Instrum Meas.* 1997;46(4):794–797.
- Snellenburg JJ, Braaf B, Hermans EA, van der Heijde RG, Sicam VA. Forward ray tracing for image projection prediction and surface reconstruction in the evaluation of corneal topography systems. *Opt Express.* 2010;18(18):19324–19338.
- Weikert MP, Koch DD, Wang D. Evaluation of corneal topography based on color LED technology. Paper presented at the American Society of Cataract and Refractive Surgery Symposium and Congress, April 19–23, 2013, San Francisco, California, USA.
- Kanellopoulos AJ, Asimellis G. Forme Fruste Keratoconus Imaging and Validation via Novel Multi-Spot Reflection Topography. *Case Rep Ophthalmol.* 2013;4(3):199–209.
- Kanellopoulos AJ, Asimellis G. Clinical Correlation between Placido, Scheimpflug and LED Color Reflection Topographies in Imaging of a Scarred Cornea. *Case Rep Ophthalmol.* 2014;5:311–317.
- Kanellopoulos AJ, Asimellis G. Keratoconus management: long-term stability of topography-guided normalization combined with high-fluence CXL stabilization (the Athens Protocol). *J Refract Surg.* 2014;30(2):88–93.
- Smolek MK, Klyce SD, Hovis JK. The Universal Standard Scale: proposed improvements to the American National Standards Institute (ANSI) scale for corneal topography. *Ophthalmology.* 2002;109(2):361–369.
- Maeda N. Evaluation of optical quality of corneas using corneal topographers. *Cornea.* 2002;21(7 Suppl):S75–S78.
- Smolek MK, Klyce SD. Current keratoconus detection methods compared with a neural network approach. *Invest Ophthalmol Vis Sci.* 1997;38(11):2290–2299.
- Klein SA. Axial curvature and the skew ray error in corneal topography. *Optom Vis Sci.* 1997;74(11):931–944.
- Iskander DR, Davis BA, Collins MJ. The skew ray ambiguity in the analysis of videokeratoscopic data. *Optom Vis Sci.* 2007;84(5):435–442.
- Klein SA. Corneal topography reconstruction algorithm that avoids the skew ray ambiguity and the skew ray error. *Optom Vis Sci.* 1997;74(11):945–962.
- Kanellopoulos AJ, Asimellis G. Comparison of Placido disc and Scheimpflug image-derived topography-guided excimer laser surface normalization combined with higher fluence CXL: the Athens Protocol, in progressive keratoconus. *Clin Ophthalmol.* 2013;7:1385–1396.
- van Saarloos PP, Constable IJ. Improved method for calculation of corneal topography for any photokeratoscope geometry. *Optom Vis Sci.* 1991;68(12):960–965.
- Greivenkamp JE, Mellinger MD, Snyder RW, Schwiegerling JT, Lowman AE, Miller JM. Comparison of three videokeratoscopes in measurement of toric test surfaces. *J Refract Surg.* 1996;12(2):229–239.
- Swartz T, Marten L, Wang M. Measuring the cornea: the latest developments in corneal topography. *Curr Opin Ophthalmol.* 2007;18(4):325–333.
- Kanellopoulos AJ, Asimellis G. Revisiting keratoconus diagnosis and progression classification based on evaluation of corneal asymmetry indices, derived from Scheimpflug imaging in keratoconic and suspect cases. *Clin Ophthalmol.* 2013;7:1539–1548.
- Hassan Z, Szalai E, Módos L Jr, Berta A, Németh G. Assessment of corneal topography indices after collagen crosslinking for keratoconus. *Eur J Ophthalmol.* 2013;23(5):635–640.
- Karabatsas CH, Cook SD, Papaefthymiou J, Turner P, Sparrow JM. Clinical evaluation of keratometry and computerised videokeratography: intraobserver and interobserver variability on normal and astigmatic corneas. *Br J Ophthalmol.* 1998;82(6):637–642.

28. Visser N, Berendschot TT, Verbakel F, de Brabander J, Nuijts RM. Comparability and repeatability of corneal astigmatism measurements using different measurement technologies. *J Cataract Refract Surg*. 2012;38(10):1764–1770.
29. Karabatsas CH, Papaefthymiou I, Aslanides IM, Chatzoulis DZ. Comparison of keratometric and topographic cylinder and axis measurements on normal corneas with low astigmatism. *Eur J Ophthalmol*. 2005;15(1):8–16.
30. Crawford AZ, Patel DV, McGhee CN. Comparison and repeatability of keratometric and corneal power measurements obtained by Orbscan II, Pentacam, and Galilei corneal tomography systems. *Am J Ophthalmol*. 2013;156(1):53–60.
31. De la Parra-Colín P, Garza-León M, Barrientos-Gutierrez T. Repeatability and comparability of anterior segment biometry obtained by the Sirius and the Pentacam analyzers. *Int Ophthalmol*. 2014;34(1):27–33.
32. Ninomiya Y, Kanazawa Y, Kojima Y, Maeda N. [Simulation of toric intraocular lens results: the effect of repeatability and increments of automated keratometry.] *Nihon Ganka Gakkai Zasshi*. 2013;117(8):621–628. Japanese.

## Clinical Ophthalmology

### Publish your work in this journal

Clinical Ophthalmology is an international, peer-reviewed journal covering all subspecialties within ophthalmology. Key topics include: Optometry; Visual science; Pharmacology and drug therapy in eye diseases; Basic Sciences; Primary and Secondary eye care; Patient Safety and Quality of Care Improvements. This journal is indexed on

Submit your manuscript here: <http://www.dovepress.com/clinical-ophthalmology-journal>

PubMed Central and CAS, and is the official journal of The Society of Clinical Ophthalmology (SCO). The manuscript management system is completely online and includes a very quick and fair peer-review system, which is all easy to use. Visit <http://www.dovepress.com/testimonials.php> to read real quotes from published authors.

Dovepress