

## Quality of life associated with breathlessness in the multinational Burden of Obstructive Lung Disease (BOLD) study: A cross-sectional analysis

Alexander Müller<sup>a,b</sup>, Emiel F. M. Wouters<sup>a,c,d</sup>, Peter Burney<sup>e</sup>, James Potts<sup>e</sup>, Joao Cardoso<sup>f,g</sup>, Mohammed Al Ghobain<sup>h</sup>, Michael Studnicka<sup>i</sup>, Daniel Obaseki<sup>j,k</sup>, Asma Elsony<sup>l</sup>, Kevin Mortimer<sup>m,n</sup>, David Mannino<sup>o,p</sup>, Rain Jögi<sup>q</sup>, Rana Ahmed<sup>r</sup>, Asaad Nafees<sup>r</sup>, Maria Fatima Rodrigues<sup>s,t</sup>, Cristina Bárbara<sup>u,v</sup>, Rune Nielsen<sup>w,x</sup>, Thorarinn Gíslason<sup>y,z</sup>, Hamid Hacene Cherkaski<sup>aa</sup>, Karima El Rhazi<sup>bb</sup>, Christer Janson<sup>cc</sup>, Mahesh Padukudru Anand<sup>dd</sup>, Sanjay Juvekar<sup>ee,ff</sup>, Herminia Brites Dias<sup>gg</sup>, Frits M. E. Franssen<sup>d,hh</sup>, Dhiraj Agarwal<sup>ee</sup>, Sylvia Hartl<sup>aa,c</sup>, Terence Seemungal<sup>ii</sup>, Stefanni Nonna Paraguas<sup>jj</sup>, Imed Harrabi<sup>kk</sup>, Meriam Denguezli<sup>ll,mm</sup>, Abdul Rashid<sup>nn</sup>, Gregory Erhabor<sup>j</sup>, Mohammed El Biaze<sup>oo</sup>, Parvaiz Koul<sup>pp</sup>, Daisy J. A. Janssen<sup>bb,hh,qq</sup>, and André F. S. Amaral<sup>bb,rr</sup> on behalf of the BOLD Collaborative Research Group

<sup>a</sup>Ludwig Boltzmann Institute for Lung Health, Vienna, Austria; <sup>b</sup>Department of Health Services Research, Care and Public Health Research Institute, Faculty of Health Medicine and Life Sciences, Maastricht University, Maastricht, The Netherlands; <sup>c</sup>Faculty of Medicine, Sigmund Freud Private University, Vienna, Austria; <sup>d</sup>Department of Respiratory Medicine, Maastricht University Medical Center, Maastricht, The Netherlands; <sup>e</sup>National Heart and Lung Institute, Imperial College London, London, UK; <sup>f</sup>Pulmonology Department, Centro Hospitalar Universitário de Lisboa Central, Lisboa, Portugal; <sup>g</sup>NOVA Medical School, Nova University Lisbon, Lisboa, Portugal; <sup>h</sup>King Abdullah International Medical Research Center, King Saud ben Abdulaziz University for Health Science, Riyadh, Saudi Arabia; <sup>i</sup>Department of Respiratory Medicine, University Hospital, Paracelsus Medical University, Salzburg, Austria; <sup>j</sup>Department of Medicine, Obafemi Awolowo University, Ile-Ife, Nigeria; <sup>k</sup>Faculty of Medicine, University of British Columbia, Vancouver, Canada; <sup>l</sup>The Epidemiological Laboratory, Khartoum, Sudan; <sup>m</sup>University of Cambridge, Cambridge, UK; <sup>n</sup>Liverpool University Hospitals NHS Foundation Trust, Liverpool, UK; <sup>o</sup>University of Kentucky, Lexington, KY, USA; <sup>p</sup>COPD Foundation, Miami, FL, USA; <sup>q</sup>Lung Clinic, Tartu University Hospital, Tartu, Estonia; <sup>r</sup>Agá Khan University, Karachi, Pakistan; <sup>s</sup>Pulmonology Department, Santa Maria Local Health Unit, Lisbon, Portugal; <sup>t</sup>Institute of Environmental Health, Lisbon Medical School, Lisbon University, Lisbon, Portugal; <sup>u</sup>Instituto de Saúde Ambiental, Faculdade de Medicina, Universidade de Lisboa, Lisbon, Portugal; <sup>v</sup>Serviço de Pneumologia, Unidade Local de Saúde de Santa Maria, Lisbon, Portugal; <sup>w</sup>Department of Clinical Science, University of Bergen, Bergen, Norway; <sup>x</sup>Department of Thoracic Medicine, Haukeland University Hospital, Bergen, Norway; <sup>y</sup>Faculty of Medicine, University of Iceland, Reykjavik, Iceland; <sup>z</sup>Department of Sleep, Landspítali – The National University Hospital of Iceland, Reykjavik, Iceland; <sup>aa</sup>Department of Pneumology, Faculty of Medicine, University Badji Mokhtar of Annaba, Annaba, Algeria; <sup>bb</sup>Department of Epidemiology and Public Health, Epidemiology and Research in Health Sciences Laboratory, Faculty of Medicine, Pharmacy and Dentistry, Sidi Mohamed Ben Abdillah University, Hassan II University Hospital Center of Fes, Fes, Morocco; <sup>cc</sup>Department of Medical Sciences: Respiratory, Allergy and Sleep Research, Uppsala University, Uppsala, Sweden; <sup>dd</sup>Department of Respiratory Medicine, JSS Medical College, JSSAHER, Mysore, India; <sup>ee</sup>Vadu Rural Health Program, KEM Hospital Research Centre, Pune, India; <sup>ff</sup>Dr. D.Y. Patil Medical College, Hospital and Research Centre, Dr. D.Y. Patil University, Pimpri, Pune, India; <sup>gg</sup>Lisbon School of Health Technology, Polytechnic of Lisbon, Lisbon, Portugal; <sup>hh</sup>Department of Research and Development, Ciro, Horn, The Netherlands; <sup>ii</sup>Faculty of Medical Sciences, University of West Indies, St Augustine, Trinidad and Tobago; <sup>jj</sup>Philippine College of Chest Physicians, Manila, Philippines; <sup>kk</sup>Ibn El Jazzar Faculty of Medicine of Sousse, University of Sousse, Sousse, Tunisia; <sup>ll</sup>Faculté de Médecine de Sousse, Université de Sousse, Sousse, Tunisia; <sup>mm</sup>Faculté de Médecine Dentaire de Monastir, Université de Monastir, Monastir, Tunisia; <sup>nn</sup>Royal College of Surgeons in Ireland and University College Dublin Malaysia Campus, Penang, Malaysia; <sup>oo</sup>Department of Respiratory Medicine, Faculty of Medicine, Mohammed Ben Abdellah University, Fes, Morocco; <sup>pp</sup>Department of Pulmonary Medicine, Sher-i-Kashmir Institute of Medical Sciences, Srinagar, India; <sup>qq</sup>Department of Family Medicine, Care and Public Health Research Institute, Faculty of Health Medicine and Life Sciences, Maastricht University, Maastricht, The Netherlands; <sup>rr</sup>NIHR Imperial Biomedical Research Centre, London, UK

### ABSTRACT

**Introduction:** Evidence of an association between breathlessness and quality of life from population-based studies is limited. We aimed to investigate the association of both physical and mental quality of life with breathlessness across several low-, middle- and high-income countries.

**Methods:** We analysed data from 19 714 adults (31 sites, 25 countries) from the Burden of Obstructive Lung Disease (BOLD) study. We measured both mental and physical quality of life components using the SF-12 questionnaire, and defined breathlessness

### ARTICLE HISTORY

Received 16 August 2024  
Accepted 6 February 2025

### KEYWORDS

Dyspnoea; breathlessness; quality of life

**CONTACT** Alexander Müller  [alexander.mueller@leadstudy.at](mailto:alexander.mueller@leadstudy.at)

 Supplemental data for this article can be accessed online at <https://doi.org/10.1080/25310429.2025.2470566>

© 2025 The Author(s). Published by Informa UK Limited, trading as Taylor & Francis Group.

This is an Open Access article distributed under the terms of the Creative Commons Attribution License (<http://creativecommons.org/licenses/by/4.0/>), which permits unrestricted use, distribution, and reproduction in any medium, provided the original work is properly cited. The terms on which this article has been published allow the posting of the Accepted Manuscript in a repository by the author(s) or with their consent.

as grade  $\geq 2$  on the modified Medical Research Council scale. We used multivariable linear regression to assess the association of each quality-of-life component with breathlessness. We pooled site-specific estimates using random-effects meta-analysis.

**Results:** Both physical and mental component scores were lower in participants with breathlessness compared to those without. This association was stronger for the physical component (coefficient =  $-7.59$ ; 95%CI  $-8.60$ ,  $-6.58$ ;  $I^2 = 78.5\%$ ) than for the mental component (coefficient =  $-3.50$ ; 95%CI  $-4.36$ ,  $-2.63$ ;  $I^2 = 71.4\%$ ). The association between physical component and breathlessness was stronger in high-income countries (coefficient =  $-8.82$ ; 95%CI  $-10.15$ ,  $-7.50$ ). Heterogeneity across sites was partly explained by sex and tobacco smoking.

**Conclusion:** Quality of life is worse in people with breathlessness, but this association varies widely across the world.

## Introduction

Breathlessness, also referred to as dyspnoea, is defined as an individual experience of breathing discomfort caused by different pathophysiological mechanisms.<sup>1</sup> The risk factors for breathlessness in adults include reduced lung function, high body mass index (BMI), older age, female sex, history of smoking and reduced physical activity.<sup>2–6</sup> Additionally, breathlessness is associated with various conditions such as respiratory disease, cardiovascular disease (CVD), malignancy, and neuromuscular disease.<sup>7</sup> Prior research conducted by Currow and colleagues has shown that breathlessness has a significant impact on quality of life in a population-based sample of Australian adults. A strong association was reported between breathlessness and both physical and mental quality of life component scores.<sup>8</sup> The impact on daily activities seems to be greatest in people living with chronic breathlessness for two to six years.<sup>9</sup> Currently, data on the association between breathlessness and quality of life are limited to studies from regions with a high gross national income.<sup>8,10–12</sup> Janson and colleagues examined the association of quality of life and COPD in the Burden of Obstructive Lung Disease (BOLD) study. They found that breathlessness is an important determinant of quality of life.<sup>11</sup> However, it should be noted that most of the data presented in their study were drawn from high-income regions. It has previously been reported that a higher socioeconomic status is related to better quality of life in patients with chronic lung disease.<sup>13</sup> Therefore, the lack of data from low- and middle-income countries represents an important limitation of previous research on the impact of breathlessness on quality of life. This study aimed to address this gap by: (1) providing additional data on breathlessness and quality of life including sites from several world regions; (2) quantifying the association between breathlessness and both physical and mental quality of life components; and (3) identifying potential differences in the strength of this association among participants from high-income countries compared to participants from low- and middle-income countries.

## Methods

### Study design

Data from the BOLD study were analysed in this study. The design and rationale of the BOLD study have been previously published.<sup>14</sup> In summary, non-institutionalised adults aged 40 years and above were recruited from 41 sites, across 34 countries. They provided self-reported information on pre-existing respiratory or cardiovascular diagnoses, respiratory symptoms, health status, and exposure to potential risk factors, including tobacco smoking. Lung function was assessed using spirometry (EasyOne, ndd Medizintechnik AG). Measurements post bronchodilation were taken after the inhalation of 200  $\mu$ g of albuterol/salbutamol. The quality of these measurements was assessed based on the American Thoracic Society acceptability and reproducibility criteria.<sup>15</sup> All measurements and questionnaires were conducted in the local language and administered by trained staff. Ethics approval was obtained for all study sites from the local ethics committees, and all participants provided informed consent.

### Dyspnoea

The 5-item modified Medical Research Council (mMRC) scale was used for the assessment of breathlessness. The mMRC items are described as follows: Grade 0 – breathlessness only with strenuous exercise; Grade 1 –

breathlessness when hurrying on level ground or up a slight hill; Grade 2 – breathlessness when walking at own pace on the level; Grade 3 – breathlessness when walking 100 yards or for a few minutes; Grade 4 – too short of breath when leaving the house or short of breath when dressing or undressing. For this study, clinically relevant breathlessness was defined as a mMRC grade 2 or higher in accordance with previously published recommendations.<sup>16</sup>

### Quality of life

Quality of life was evaluated using the short form 12 (SF-12) quality of life questionnaire in 31 of the 41 sites included in the BOLD study. These 31 sites were included in the present analysis. The SF-12 questionnaire comprises 12 items which collectively assess eight domains of quality of life (physical functioning; role-physical; bodily pain; general health, vitality; social functioning; role-emotional; mental health). The questionnaire was translated into the local languages according to the International Quality of Life Assessment Project method.<sup>17</sup> The SF-12 questionnaire results are divided into a physical and a mental component score. A score of 50 (SD 10) indicates the normal value based on reference populations and higher values indicate higher quality of life.<sup>18</sup>

### Statistical analyses

Prevalence estimates for breathlessness were calculated and SF-12 component scores were summarised descriptively. To estimate the association between quality-of-life scores and breathlessness, we used multi-variable linear regression models for each study site. The potential confounders included in the regression model were age, sex, CVDs, diabetes, hypertension, smoking status, BMI and FVC and FEV<sub>1</sub>/FVC below the lower limit of normal (LLN), based on the reference equations for Caucasians from the US National Health and Nutrition Examination Survey (NHANES) III.<sup>19</sup> Prevalence estimates and regression coefficients were corrected for sampling weights to account for different sampling strategies and response rates. Estimates from each study site were pooled and summarised based on gross national income (high-income, low- and middle-income) according to World Bank Group data<sup>20</sup> using random-effects meta-analysis. Results were also stratified by sex and smoking status.  $I^2$  statistic was used to explore heterogeneity across sites. All statistical analyses were conducted using Stata version 17 (StataCorp, USA), and results were considered significant at a p-value of less than 0.05.

## Results

19,714 participants from 31 sites from the BOLD baseline survey were included in this study. The sites were distributed over 25 countries and five continents. Table 1 shows the distribution of several characteristics of the participants across study sites. The mean age of the study participants was 54.6 years (SD 11.0), 49.6% were males, and most have never smoked. Table 2 shows the prevalence estimates for breathlessness (mMRC  $\geq 2$ ) and the mean component scores of the SF-12 questionnaire for each study site and separated by participants with and without dyspnoea. The prevalence of dyspnoea ranged from 0.0% in Mysore (India) to 28.8% in Nampicuan-Talugtug (Philippines), with a mean prevalence estimate across sites of 11.1% (SD 7.8). Mental component scores ranged from 41.8 (SD 8.4) in Fes (Morocco) to 58.4 (SD 7.1) in Mysore (India). Physical component scores ranged from 43.9 (SD 10.6) in Krakow (Poland) to 53.9 (SD 3.9) in Blantyre (Malawi). The estimates for the associations between mental and physical quality of life component scores are shown in Figures 1 and 2, respectively. Both mental (beta = -3.50, 95%CI -4.36 to -2.63,  $I^2$  = 71.4%) and physical (beta = -7.59, 95%CI -8.60 to -6.58,  $I^2$  = 78.5%) quality of life component scores were lower in participants with breathlessness. This association was stronger for the physical component, particularly in high-income countries. Heterogeneity in these associations was high across study sites. For further investigation of this heterogeneity, the meta-analyses were stratified by sex and smoking status. The results of these stratified analyses can be found in figures S1 to S4 of the supplementary material. Sex (females:  $I^2$  = 90.3% for mental component,  $I^2$  = 63.5% for physical component; males:  $I^2$  = 46.3% for mental component,  $I^2$  = 86.7% for physical component) and smoking status (ever smokers:  $I^2$  = 57.0% for mental component,  $I^2$  = 72.6% for physical component; ever smokers:  $I^2$  = 85.9% for mental component,  $I^2$  = 70.0% for physical component) can partly explain heterogeneity in the association between quality of life component scores and breathlessness across study sites.

**Table 1.** Characteristics of participants across the BOLD study sites.

	n	Males, %	Age, mean (sd)	BMI, mean (sd)	Never Smokers, %	Cardiovascular disease, %	Diabetes, %	Hypertension, %	Restriction*, %	Obstruction**, %
Albania (Tirana)	887	49.5	55.1 (11.8)	27.5 (4.1)	63.4	3.4	6.9	22.1	15.1	7.4
Algeria (Annaba)	828	51	53.4 (11.1)	28.1 (5.6)	60.3	6.4	14.2	22.2	27.1	6.2
Australia (Sydney)	494	46.8	57.9 (12.5)	27.7 (5)	47.6	12.7	7.8	31.1	12.2	9.7
Austria (Salzburg)	1202	46.8	58.8 (12)	26.2 (4.1)	46.7	13.6	5.9	29.9	9.2	16.9
Canada (Vancouver)	793	47.9	56.3 (12.4)	26.7 (5)	42.7	13.4	7.4	20.2	8.3	12.7
England (London)	647	45.6	57.5 (12.3)	27.1 (4.9)	34.8	7.7	6.5	33.8	16.5	17
Estonia (Tartu)	567	40.5	58.6 (11.9)	28.3 (5.3)	54.5	33.6	6.2	36.7	8.5	5.9
Germany (Hannover)	529	47	56.7 (10.9)	26.6 (4.3)	39.6	13.5	4.8	33.2	7.1	8.2
Iceland (Reykjavik)	726	52	56.6 (11.7)	27.8 (4.9)	33.7	15.3	4.2	31.7	12.5	11.1
India (Kashmir)	757	51.6	51.4 (10.5)	22.6 (3.7)	47.6	1.2	2.6	26.9	28.1	16.2
India (Mumbai)	434	62.9	52.6 (9.5)	23.9 (4.1)	90	2.4	5.2	10.6	67.7	6.5
India (Mysore)	592	42.3	46.5 (6.9)	24.7 (3.8)	90.4	0.2	16.9	17	79	7.9
India (Pune)	831	59.9	52.2 (10)	22.1 (3.9)	87.5	1.4	2.2	5.2	66.1	5.8
Malawi (Blantyre)	359	54.4	50.2 (9.1)	24.4 (5)	83.8	2.8	5.9	16.1	45.8	6.4
Malawi (Chikwawa)	381	56.9	51.3 (9.5)	21.8 (3.8)	70.8	1.2	1.3	1.6	36.9	12.2
Morocco (Fes)	475	60.4	52.9 (11.6)	27.2 (4.8)	64.6	2.8	9.1	21.9	18.5	6.8
Netherlands (Maastricht)	576	47.6	58.2 (11.8)	27.4 (4.5)	35.8	17.8	7.1	29.8	9.8	18.3
Nigeria (Ife)	841	55.1	52.5 (10.9)	25 (5.1)	85.4	0.2	0.6	1.4	71.9	7
Norway (Bergen)	575	49.1	56.5 (12)	26.4 (4.2)	35.4	10.8	4	25.3	8.8	11
Philippines (Manila)	825	46.5	52.4 (10.9)	24.5 (4.7)	43.2	9.3	6.1	23.6	63.7	8.6
Philippines (Nampicuan-Talugtug)	722	49.4	54.2 (10.6)	21.6 (4.1)	44.6	8.7	2.5	20.7	56.7	15.2
Poland (Krakow)	480	49.8	55.1 (11.2)	27.6 (4.7)	38.5	30.4	10.2	40.4	9	13.8
Portugal (Lisbon)	564	48	57.1 (11.7)	27.7 (4.5)	55	10.8	8.9	29.1	10.2	8
Saudi Arabia (Riyadh)	609	54.9	49.5 (7.5)	30.9 (5.7)	73	5.2	27.4	24	51.3	2.8
South Africa (Uitsig-Ravensmead)	766	44.2	52.9 (10.1)	27.5 (7.3)	30.4	11.4	11.4	34.8	46	18.9
Sudan (Gezeira)	386	56.6	52.1 (10.2)	26.9 (17.3)	72.8	0.3	6.4	9.4	58.4	5.9
Sudan (Khartoum)	479	53.1	53.1 (10.9)	26.3 (6.3)	78.3	1.9	8.7	20.6	68	10.1
Sweden (Uppsala)	489	47.6	58.3 (11.2)	26.8 (4.3)	40.9	10.3	3	26.6	8.7	7.8
Trinidad and Tobago	1051	50	54.7 (10.7)	28.7 (9.3)	70.2	5.8	14.8	27.9	73.7	5.9
Tunisia (Sousse)	433	60.7	50.5 (9.1)	27.8 (5.2)	47.2	4	7	14.1	23.2	5.2
USA (Lexington, KY)	416	46.4	56.1 (11.5)	30.4 (6.3)	39.1	24.2	15.7	43.9	23.2	12.4

\*Restriction defined as FVC&lt;LLN; \*\*Obstruction defined as FEV1/FVC&lt;LLN.

**Table 2.** Prevalence of breathlessness and mean SF-12 scores for mental and physical quality of life across BOLD study sites.

Study site	n	Breathlessness (%)	Mental component score, mean (sd)			Physical component score, mean (sd)		
			All participants	With breathlessness	Without breathlessness	All participants	With breathlessness	Without breathlessness
Albania (Tirana)	887	9.2	51.4 (5.9)	45.6 (6.6)	52.0 (5.5)	51.5 (6.8)	39.0 (6.5)	52.7 (5.4)
Algeria (Annaba)	828	12.3	49.3 (7.2)	49.3 (7.7)	49.3 (7.1)	49.7 (8.8)	39.5 (9.4)	51.2 (7.7)
Australia (Sydney)	494	7.3	51.6 (9.6)	46.4 (12.6)	52.1 (9.2)	51.0 (8.7)	39.2 (10.1)	52.0 (7.9)
Austria (Salzburg)	1202	8	54.2 (8.6)	50.6 (11.1)	54.5 (8.3)	50.4 (7.5)	40.5 (9.7)	51.3 (6.6)
Canada (Vancouver)	793	6.7	50.8 (9.6)	44.9 (11.5)	51.2 (9.4)	51.6 (9.0)	40.0 (10.8)	52.5 (8.2)
England (London)	647	14.4	48.8 (11)	45.2 (12.3)	49.4 (10.7)	48.9 (10.3)	34.2 (9.9)	51.4 (8.1)
Estonia (Tartu)	567	13.7	52.0 (8.7)	48.2 (9.8)	52.6 (8.4)	47.2 (9.2)	38.2 (9.6)	48.7 (8.3)
Germany (Hannover)	529	3.8	55.9 (7.5)	59.0 (7.8)	55.8 (7.5)	48.6 (7.9)	33.9 (13.1)	49.1 (7.0)
Iceland (Reykjavik)	726	8.6	53.6 (8.9)	52.9 (11.2)	53.7 (8.6)	50.5 (9.3)	38.2 (12.4)	51.6 (8.1)
India (Kashmir)	757	4.9	51.7 (6.3)	41.8 (6.6)	52.2 (5.9)	51.2 (6.6)	36.8 (8.8)	52.0 (5.6)
India (Mumbai)	434	9.8	58.0 (6.6)	50.5 (7.8)	58.9 (5.9)	52.3 (7.1)	41.4 (4.8)	53.5 (6.2)
India (Mysore)	592	0	58.4 (7.1)	-	58.4 (7.1)	53.3 (4.1)	-	53.3 (4.1)
India (Pune)	831	6.6	49.3 (7.4)	45.9 (8.6)	49.5 (7.3)	50.1 (6.6)	41.9 (7.2)	50.7 (6.2)
Malawi (Blantyre)	359	1.9	54.0 (8.2)	48.5 (6.9)	54.1 (8.2)	53.9 (3.9)	49.8 (4.3)	54.0 (3.9)
Malawi (Chikwawa)	381	1.4	56.0 (7.9)	48.2 (9.4)	56.1 (7.8)	52.3 (4.1)	52.1 (5.2)	52.3 (4.1)
Morocco (Fes)	475	14.8	41.8 (8.4)	38.5 (7.3)	42.3 (8.5)	50.8 (9.2)	43.3 (12.1)	52.1 (7.9)
Netherlands (Maastricht)	576	10.1	53.5 (9.4)	51.2 (11.9)	53.8 (9.1)	50.1 (9.0)	38.3 (11.3)	51.4 (7.7)
Nigeria (Ife)	841	3.2	55.2 (9.7)	53.8 (8.9)	55.3 (9.8)	45.5 (8.3)	36.8 (10.4)	45.8 (8.0)
Norway (Bergen)	575	5.3	54.2 (8.9)	51.8 (10.9)	54.4 (8.8)	50.8 (8.7)	34.7 (11.4)	51.7 (7.6)
Philippines (Manila)	825	22.9	53.2 (9.4)	50.9 (10.4)	53.9 (8.9)	46.4 (7.6)	43.2 (8.4)	47.3 (7.1)
Philippines (Nampicuan-Talugtug)	722	28.8	50.1 (7.2)	47.8 (7.4)	51.1 (6.9)	45.6 (7.6)	40.3 (8.9)	47.7 (5.8)
Poland (Krakow)	480	24.1	47.7 (10.2)	44.0 (10.6)	48.9 (9.8)	43.9 (10.6)	36.2 (9.6)	46.4 (9.7)
Portugal (Lisbon)	564	12.6	50.3 (11.4)	45.0 (10.3)	51.1 (11.3)	49.7 (8.6)	43.2 (9.3)	50.6 (8.1)
Saudi Arabia (Riyadh)	609	22.5	50.2 (7.8)	46.7 (8.1)	51.2 (7.4)	48.5 (8.6)	40.7 (8.1)	50.8 (7.3)
South Africa (Uitsig-Ravensmead)	766	28.7	49.0 (9.8)	44.9 (9.7)	50.7 (9.3)	46.5 (9.4)	39.2 (9.6)	49.5 (7.6)
Sudan (Gezeira)	386	7.9	53.3 (10)	47.7 (8.9)	53.7 (10.0)	47.4 (7.5)	42.4 (10.2)	47.8 (7.1)
Sudan (Khartoum)	479	6.8	47.6 (9.2)	46.1 (10.4)	47.7 (9.1)	48.8 (7.4)	42.8 (10.7)	49.2 (6.9)
Sweden (Uppsala)	489	5.5	43.5 (6.8)	45.0 (6.0)	43.5 (6.8)	48.8 (6.6)	40.9 (8.1)	49.2 (6.3)
Trinidad and Tobago	1051	8.5	54.9 (8.4)	50.1 (11.3)	55.4 (7.9)	48.2 (7.1)	39.8 (12.2)	49.0 (5.9)
Tunisia (Sousse)	433	15.4	50.5 (9.7)	47.2 (10.4)	51.1 (9.5)	47.4 (8.6)	41.4 (8.3)	48.5 (8.2)
USA (Lexington, KY)	416	19.6	50.4 (11.1)	42.8 (14.0)	52.3 (9.3)	45.8 (11.4)	35.1 (11.2)	48.4 (9.9)

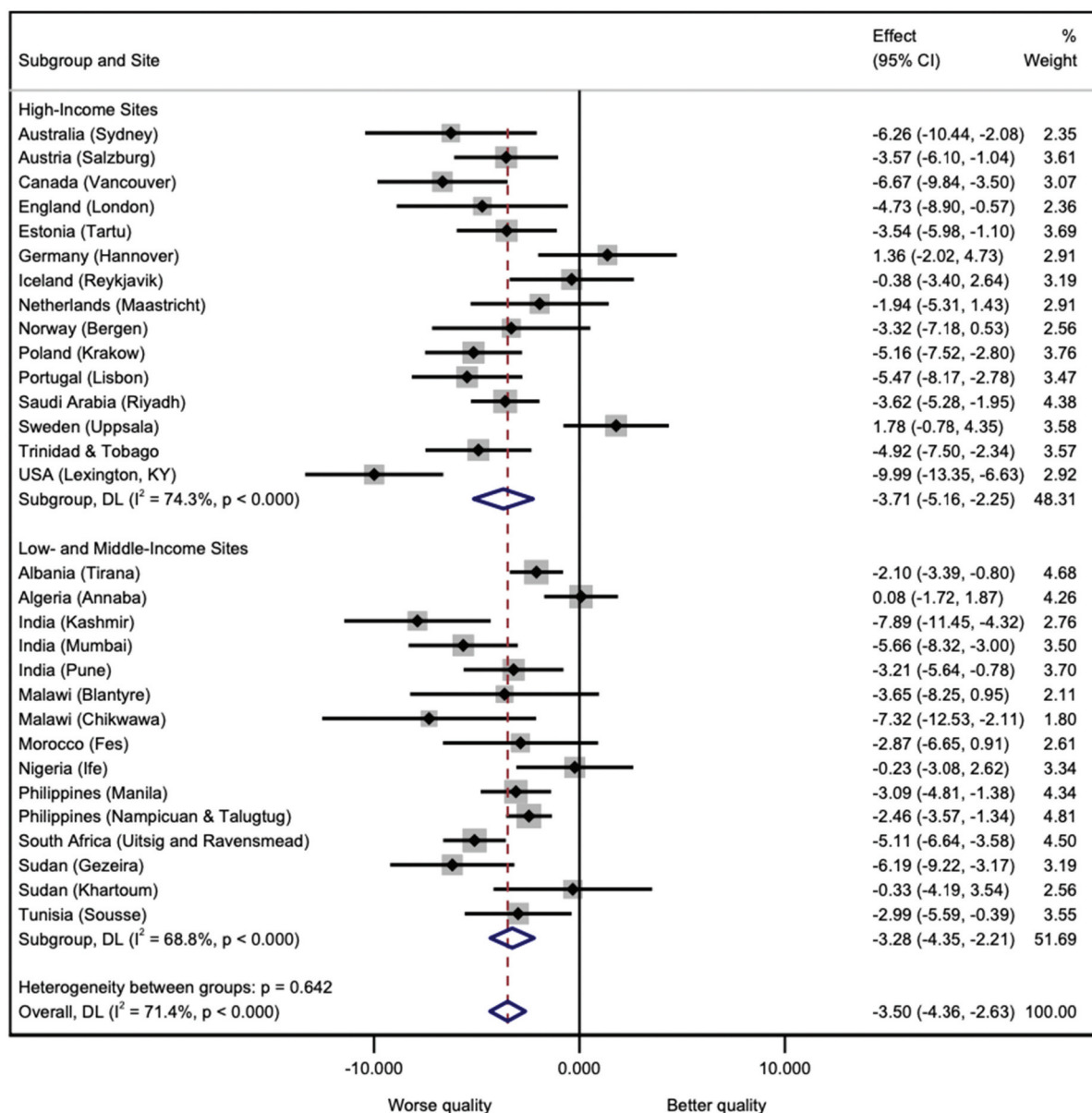
## Discussion

To the best of our knowledge, this is the first study investigating the association of breathlessness and quality of life across sites in different world regions. This study included a large sample size and sites from five continents as well as high-, middle-, and low-income countries. The design was population-based thus not investigating breathlessness in connection to a specific condition or disease, but with a focus on the general adult population.

This study shows that individuals with breathlessness experience lower quality of life in both the mental and physical components. However, the association between breathlessness and quality of life was stronger for the physical domain. These findings are in line with those reported in samples of the Health Omnibus Survey (HOS) conducted in South Australia<sup>8,9</sup> and the European Community Respiratory Health Survey (ECRHS) including data from 22 European countries.<sup>12</sup> Research on measuring quality of life in various populations has shown that a change in 3 to 5 points on the mental and physical subscales of the SF-12 questionnaire can be considered clinically relevant.<sup>21–23</sup> The magnitude of the association with the physical component score in our study clearly exceeded this range. Our data therefore show that breathlessness and physical quality of life are inversely associated. This argument is supported by recent publications showing that being breathless leads to physical deconditioning, muscle loss, limitations in mobility and activities of daily living and reduced sexual activity.<sup>8,24–26</sup> Mental component scores were also lower in participants with breathlessness in our study, although the association was weaker than for the physical component. This might be explained by the composition of the SF-12 questionnaire. It can be argued that potential limitations in everyday activities caused by breathlessness may have a stronger impact on the physical SF-12 component score based on the questions asked in the questionnaire (e.g., moderate activities such as moving a table, pushing a vacuum cleaner, bowling, playing golf or climbing several flights of stairs – Does your health now limit you in these activities? If so, how much?). As no data



## Association of mental score with breathlessness

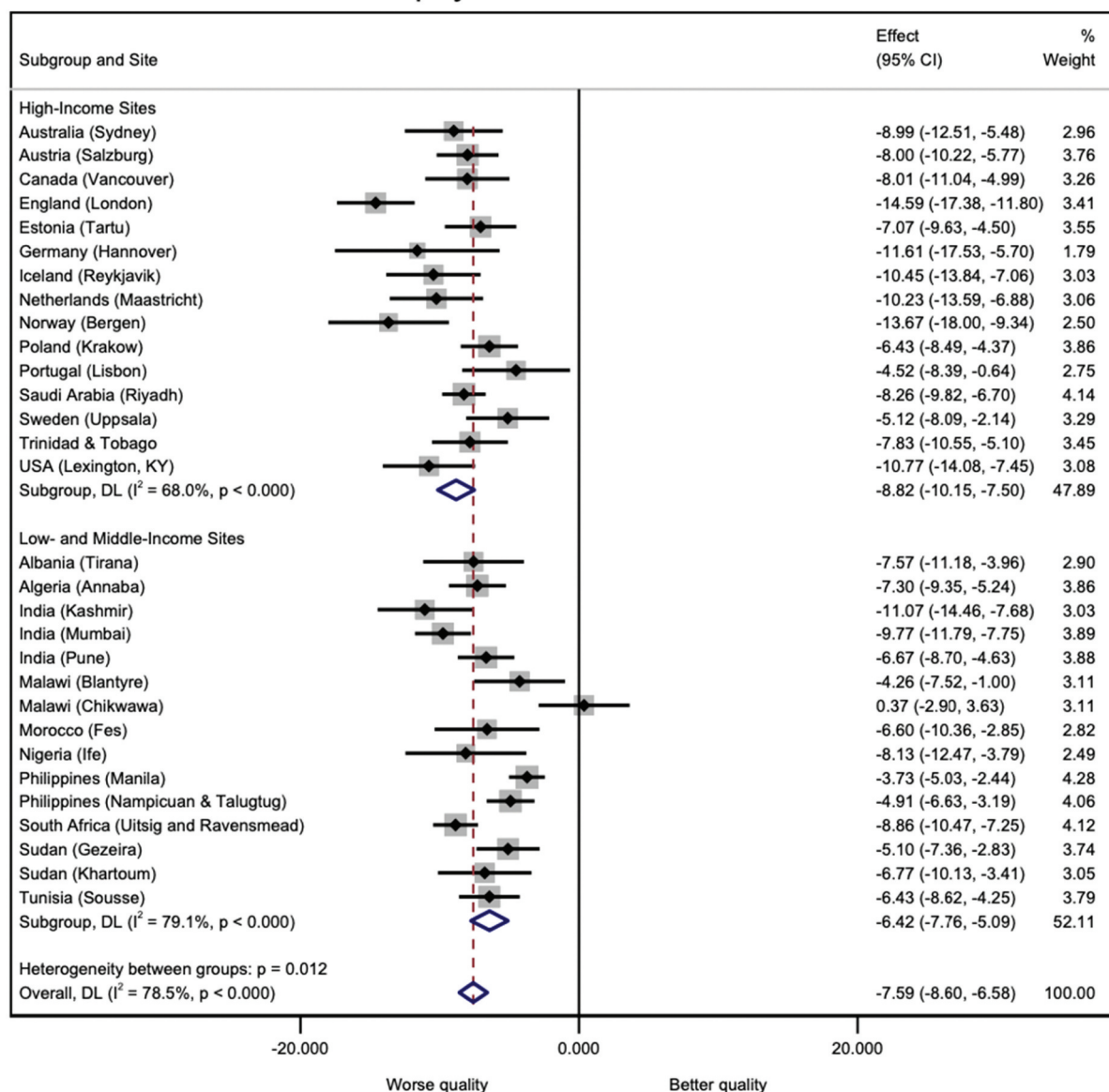


**Figure 1.** Association of SF-12 mental component score with breathlessness in high income and low/middle income sites.

on physical activity levels of participants were available, we could not include these in our regression model as a potential confounding factor. In addition, the mMRC scale measures breathlessness related to physical activity, without acknowledging the emotional or social impact of breathlessness and thus potentially leading to a weaker association of breathlessness and the mental quality of life component score in our analyses. Using a more comprehensive tool to quantify dyspnoea such as the Dyspnoea-12 questionnaire<sup>27</sup> or the Multidimensional Dyspnoea Profile<sup>28</sup> might lead to a stronger association between breathlessness and the mental quality of life component. Despite some limitations of the tools used to quantify breathlessness and quality of life in this study, it is reasonable to conclude that both physical and mental quality of life domains are negatively associated with the presence of breathlessness.

This study offers data from different world regions and different levels of gross national income. The association between physical component score and dyspnoea was stronger in high-income countries. However, the differences were only to a small extent and there was substantial heterogeneity of results

## Association of physical score with breathlessness



**Figure 2.** Association of SF-12 physical component score with breathlessness in high income and low/middle income sites.

across all sites. This heterogeneity is partly explained by sex and smoking status. Sex differences in the pathophysiology and perception of breathlessness have been described in previous research. Data from the Swedish CardioPulmonary Image Study (SCAPIS) and the third European Community Respiratory Health Survey (ECRHS III) showed that lower absolute lung volumes can explain why breathlessness during physical activity is more common in women.<sup>29,30</sup> In addition, altered respiratory mechanics caused by relatively smaller airway diameters (dysanapsis) and differences in reporting respiratory symptoms may explain why women are more strongly affected by breathlessness than men.<sup>31</sup> Research on gender differences in COPD and asthma patients has also shown differences in self-reported quality of life.<sup>28,32,33</sup> Women seem to experience lower mental quality of life compared to men with similar disease severity. Previous research has also shown that smoking is independently associated with breathlessness, even in absence of smoking-related disease.<sup>34</sup> This might be due to higher airway resistance and reduced oxygen uptake during physical activity leading to an increase in exertional breathlessness in smokers. Furthermore, previous research has shown that smoking is independently associated with reduced quality of life.<sup>35,36</sup> Smoking can lead to lower physical quality of life based on the mechanisms described above while in addition a lower mental wellbeing increases the likelihood of starting with tobacco smoking and reduces the rate of quitting it.

Although the design of our study was population-based and therefore mainly focused on healthy individuals, the findings may have several implications for clinical practice in people with chronic breathlessness. In a large systematic review of qualitative studies, Hutchinson and colleagues investigated mental coping mechanisms of patients with breathlessness.<sup>37</sup> They showed that people with chronic dyspnoea may either use engaging mechanisms to cope with their situation, leading to better outcomes and treatment, or disengaging coping mechanisms characterised by self-blame, shame, and social isolation due to their condition. Currow and colleagues found that quality of life is lowest in individuals living with chronic breathlessness for two to six years after symptom onset, while the negative effects of breathlessness on quality of life slightly wear off after this time.<sup>8</sup> This may come as a surprise, but the authors argue that patients and their environment seem to adapt to the situation over time and sometimes seem to rethink their individual definition of quality of life. As breathlessness and physical wellbeing seem to be strongly associated, clinicians will have to focus on promoting physical activity and rehabilitation services in patients with chronic breathlessness, thus improving their physical functioning. They should further focus on enabling patients in developing coping strategies to reduce the potential negative impact on the patient's mental quality of life. A possible model for including these different components of physical and mental wellbeing in patient care programs for breathless individuals is the breathing-thinking-functioning (BTF) model.<sup>38</sup> This clinical model comprises respiratory interventions (e.g., handheld fan, breathing techniques, respiratory muscle training) alongside psychological support (e.g., relaxation techniques, cognitive behavioural therapy) and active rehabilitation and can be used to develop and guide integrated breathlessness management services.

The strengths of this study include, as mentioned earlier, new data on breathlessness from areas of the world that have previously been underrepresented, its population-based design, and the standardised protocol across all sites. However, there are also limitations to this study. The cross-sectional design does not allow conclusions about causality between breathlessness and quality of life, although it is unlikely a worse quality of life would cause breathlessness. Another limitation is that participants were 40 years or older, thus not fully representing the adult general population. Also, even if widely used in epidemiological research, the mMRC breathlessness scale might not properly measure clinically relevant dyspnoea in population-based studies as we argued in the past.<sup>3,4</sup> Especially not in a global context, as linguistic and societal differences might lead to over- and underestimation of prevalence estimates. The translation of the study questionnaire followed a standardised forward-backward translation process to reduce language bias.<sup>14</sup> However, linguistic or cultural differences might still limit the comparability of self-reported outcomes across different countries. In addition, no participants from hospitals or nursing homes were included, and it may be argued that a relevant proportion of individuals living with quality-of-life impairment due to chronic breathlessness might be found in these institutions.

## Conclusion

This study offers new data on the association of breathlessness and quality of life including a large number of sites from different world regions. It shows that quality of life is negatively related to the presence of breathlessness, with the association being greater for the physical quality of life component. Further research should focus on investigating the variation in association between quality of life and breathlessness, as we were only able to partially explain the heterogeneity in this study. Future studies might also use longitudinal approaches to follow-up individuals with chronic breathlessness over time to see how changes in breathlessness severity have an impact on quality of life.

## Acknowledgments

We thank all participants and field workers for their time and effort put into this study.

BOLD (Burden of Obstructive Lung Disease) Collaborative Research Group members: Albania: Hasan Hafizi (principal investigator [PI]), Anila Aliko, Donika Bardhi, Holta Tafa, Natasha Thanasi, Arian Mezini, Alma Teferici, Dafina Todri, Jolanda Nikolla, and Rezarta Kazasi (Tirana University Hospital Shefqet Ndroqi, Albania); Algeria: Hamid Hacene Cherkaski (PI), Amira Bengrait, Tabarek Haddad, Ibtissem Zgaoula, Maamar Ghit, Abdelhamid Roubhia, Soumaya Boudra, Feryal Atoui, Randa Yakoubi, Rachid Benali, Abdelghani Bencheikh, and Nadia Ait-Khaled (Faculte de M edecine Annaba, Service de



Epidemiologie et Médecine Préventive, El Hadjar, Algeria); Australia: Christine Jenkins (PI), Guy Marks (PI), Tessa Bird, Paola Espinel, Kate Hardaker, and Brett Toelle (Woolcock Institute of Medical Research, Sydney, Australia); Austria: Michael Studnicka (PI), Torkil Dawes, Bernd Lamprecht, and Lea Schirhofer (Department of Pulmonary Medicine, Paracelsus Medical University, Salzburg, Austria); Bangladesh: Akramul Islam (PI), Syed Masud Ahmed (Co-PI), Shayla Islam, Qazi Shafayetul Islam, Mesbah-ul-Haque, Tridib Roy Chowdhury, Sukantha Kumar Chatterjee, Dulal Mia, Shyamal Chandra Das, Mizanur Rahman, Nazrul Islam, Shahaz Uddin, Nurul Islam, Luiza Khatun, Monira Parvin, Abdul Awal Khan, and Maidul Islam (James P. Grant School of Public Health, BRAC [Building Resources Across Communities] University, Institute of Global Health, Dhaka, Bangladesh); Benin: Herve Lawin (PI), Arsene Kpangon, Karl Kpoussou, Gildas Agodokpessi, Paul Ayelo, and Benjamin Fayomi (Unit of Teaching and Research in Occupational and Environmental Health, University of Abomey Calavi, Cotonou, Benin); Cameroon: Bertrand Mbatchou (PI) and Atongno Humphrey Ashu (Douala General Hospital, Douala, Cameroon); Canada: Wan C. Tan (PI) and Wen Wang (iCapture Center for Cardiovascular and Pulmonary Research, University of British Columbia, Vancouver, BC, Canada); China: NanShan Zhong (PI), Shengming Liu, Jiachun Lu, Pixian Ran, Dali Wang, Jin-ping Zheng, and Yumin Zhou (Guangzhou Institute of Respiratory Health, First Affiliated Hospital of Guangzhou Medical College, Guangzhou, China); Estonia: Rain Jogi (PI), Hendrik Laja, Katrin Ulst, Vappu ~ Zobel, and Toomas-Julius Lill (Lung Clinic, Tartu University Hospital, Tartu, Estonia); Gabon: Ayola Akim Adegnika (PI) (Centre de Recherches Médicales de Lambarene, Lambarene, Gabon); Germany: Tobias Welte (PI), Isabelle Bodemann, Henning Geldmacher, and Alexandra Schweda-Linow (Department of Pneumology, Hannover Medical School and German Center of Lung Research, Hannover, Germany); Iceland: Thorarinn Gislason (PI), Bryndis Benediktssdottir, Kristin Jorundsdottir, Lovisa Gudmundsdottir, Sigrun Gudmundsdottir, and Gunnar Gudmundsson (Department of Allergy, Respiratory Medicine, and Sleep, Landspítali University Hospital, Reykjavik, Iceland); India: Mahesh Rao (PI) (JSS Medical College, Mysuru, India); Parvaiz A. Koul (PI), Sajjad Malik, Nissar A. Hakim, and Umar Hafiz Khan (Sher-i-Kashmir Institute of Medical Sciences, Srinagar, J&K, India); Rohini Chowgule (PI), Vasant Shetye, Jonelle Raphael, Rosel Almeda, Mahesh Tawde, Rafiq Tadvil, Sunil Katkar, Milind Kadam, Rupesh Dhanawade, and Umesh Ghurup (Indian Institute of Environmental Medicine, Mumbai, India); Sanjay Juvekar (PI), Siddhi Hirve, Somnath Sambhudas, Bharat Chaidhary, Meera Tambe, Savita Pingale, Arati Umap, Archana Umap, Nitin Shelar, Sampada Devchakke, Sharda Chaudhary, Suvarna Bondre, Savita Walke, Ashlesha Gawhane, Anil Sapkal, Rupali Argade, and Vijay Gaikwad (Vadu Health and Demographic Surveillance System, King Edward Memorial Hospital Research Centre Pune, Pune India); Sundeep Salvi (PI), Bill Brashier, Jyoti Londhe, and Sapna Madas (Chest Research Foundation, Pune India); Jamaica: Althea Aquart-Stewart (PI) and Akosua Francia Aikman (University of the West Indies, Kingston, Jamaica); Kyrgyzstan: Talant M. Sooronbaev (PI), Bermet M. Estebeşova, Meerim Akmatallieva, Saadat Usenbaeva, Jypara Kydyrova, Eliza Bostonova, Ulan Sheraliev, Nuridin Marajapov, Nurgul Toktogulova, Berik Emilov, Toktogul Azilova, Gulnara Beishekeeva, Nasyikat Dononbaeva, and AijamalTabyshova (Pulmonology and Allergology Department, National Centre of Cardiology and Internal Medicine, Bishkek, Kyrgyzstan); Malawi: Kevin Mortimer (PI), Wezzie Nyapigoti, Ernest Mwangoka, Mayamiko Kambwili, Martha Chipeta, Gloria Banda, Suzgo Mkandawire, and Justice Banda (the Malawi Liverpool Wellcome Trust, Blantyre, Malawi); Malaysia: Li-Cher Loh (PI), Abdul Rashid, and Siti Sholehah (Royal College of Surgeons in Ireland and University College Dublin Malaysia Campus); Morocco: Mohamed C. Benjelloun (PI), Chakib Nejari, Mohamed Elbiaze, and Karima El Rhazi (Laboratoire d'épidémiologie, Recherche Clinique et Santé Communautaire, Fes, Morocco); Netherlands: E. F. M. Wouters and G. J. Wesseling (Maastricht University Medical Center, Maastricht, the Netherlands); Nigeria: Daniel Obaseki (PI), Gregory Erhabor, Olayemi Awopeju, and Olufemi Adewole (Obafemi Awolowo University, Ile-Ife, Nigeria); Norway: Amund Gulsvik (PI), Tina Endresen, and Lene Svendsen (Department of Thoracic Medicine, Institute of Medicine, University of Bergen, Bergen, Norway); Pakistan: Asaad A. Nafees (PI), Muhammad Irfan, Zafar Fatmi, Aysha Zahidie, Natasha Shaukat, and Meesha Iqbal (Aga Khan University, Karachi, Pakistan); Philippines: Luisito F. Idolor (PI), Teresita S. de Guia, Norberto A. Francisco, Camilo C. Roa, Fernando G. Ayuyao, Cecil Z. Tady, Daniel T. Tan, Sylvia Banal-Yang, Vincent M. Balanag, Jr., Maria Teresita N. Reyes, and Renato B. Dantes (Lung Centre of the Philippines, Philippine General Hospital, Nampicuan and Talugtug, the Philippines); Renato B. Dantes (PI), Lourdes Amarillo, Lakan U. Berratio, Lenora C. Fernandez, Norberto A. Francisco, Gerard S. Garcia, Teresita S. de Guia, Luisito F. Idolor, Sullian S. Naval, Thessa Reyes, Camilo C. Roa, Jr., Ma. Flordeliza Sanchez, and Leander P. Simpao (Philippine College of Chest Physicians, Manila, the Philippines); Poland: Ewa Nizankowska-Mogilnicka (PI), Jakub Frey, Rafal Harat, Filip Mejza, Pawel Nastalek, Andrzej Pajak, Wojciech Skucha, Andrzej Szczeklik, and Magda Twardowska, (Division of Pulmonary Diseases, Department of Medicine, Jagiellonian University School of Medicine, Krakow, Poland); Portugal: Cristina Barbara (PI), Fatima Rodrigues, Herminia Dias, Joao Cardoso, João Almeida, Maria Joao Matos, Paula Simão, Moutinho Santos, and Reis Ferreira (the Portuguese Society of Pneumology, Lisbon, Portugal); Saudi Arabia: M. Al Ghobain (PI), H. Alorainy (PI), E. El-Hamad, M. Al Hajjaj, A. Hashi, R. Dela, R. Fanuncio, E. Doloriel, I. Marciano, and L. Safia (Saudi Thoracic Society, Riyadh, Saudi Arabia); South Africa: Eric Bateman (PI), Anamika Jithoo (PI), Desiree Adams, Edward Barnes, Jasper Freeman, Anton Hayes, Siphon Hlengwa, Christine Johannisen, Mariana Koopman, Innocentia Louw, Ina Ludick, Alta Olckers, Johanna Ryck, and Janita Storbeck, (University of Cape Town Lung Institute, Cape Town, South Africa); Sri Lanka: Kirthi Gunasekera (PI) and Rajitha Wickremasinghe (Medical Research Institute, Central Chest Clinic, Colombo, Sri Lanka); Sudan: Asma Elsony (PI), Hana A. Elsadig, Nada Bakery Osman, Bandar Salah Noory, Monjda Awad Mohamed, Hasab Alrasoul Akasha Ahmed Osman, Namarig Moham ed Elhassan, Abdel Mu'is El Zain, Marwa Mohamed Mohamaden, Suhaiba Khalifa, Mahmoud Elhadi, Mohand Hassan, and Dalia Abdelmonam (the Epidemiological Laboratory, Khartoum, Sudan); Sweden: Christer Janson (PI), Inga Sif Olafsdottir, Katarina Nisser, Ulrike SpetzNystrom, Gunilla Hägg, and Gun-Marie Lund (Department of Medical Sciences: Respiratory Medicine and Allergology, Uppsala University, Uppsala, Sweden); Trinidad and Tobago: Terence Seemungal (PI), Fallon

Lutchmansingh, and Liane Conyette (University of the West Indies, St. Augustine, Trinidad and Tobago); Tunisia: Imed Harrabi (PI), Myriam Denguezli, Zouhair Tabka, Hager Daldoul, Zaki Boukheroufa, Firas Chouikha, and Wahbi Belhaj Khalifa (University Hospital Farhat Hached, Faculte de M edecine, Sousse, Tunisia); Turkey: Ali Kocabas, (PI), Attila Hancioglu, Ismail Hanta, Sedat Kuleci, Ahmet Sinan Turkyilmaz, Sema Umut, and Turgay Unalan (Department of Chest Diseases, Cukurova University School of Medicine, Adana, Turkey); UK: Peter G. J. Burney (PI), Anamika Jithoo, Louisa Gnatiuc, Hadia Azar, Jaymini Patel, Caron Amor, James Potts, Michael Tumilty, Fiona McLean, and Risha Dudhaiya (National Heart and Lung Institute, Imperial College London, London, UK); United States: A. Sonia Buist (PI) (Oregon Health & Science University, Portland, Oregon); Mary Ann McBurnie, William M. Vollmer, and Suzanne Gillespie (Kaiser Permanente Center for Health Research, Portland, Oregon); Sean Sullivan (University of Washington, Seattle, Washington); Todd A. Lee and Kevin B. Weiss (Northwestern University, Chicago, Illinois); Robert L. Jensen and Robert Crapo (Latter Day Saints Hospital, Salt Lake City, Utah); Paul Enright (University of Arizona, Tucson, Arizona); David M. Mannino (PI), John Cain, Rebecca Copeland, Dana Hazen, and Jennifer Methvin (University of Kentucky, Lexington, Kentucky). Additional local support for BOLD clinical sites was provided by: Boehringer Ingelheim China (GuangZhou, China); Turkish Thoracic Society, BoehringerIngelheim, and Pfizer (Adana, Turkey); Altana, AstraZeneca, Boehringer-Ingelheim, GlaxoSmithKline, Merck Sharpe & Dohme, Novartis, Salzburger Gebietskrankenkasse and Salzburg Local Government (Salzburg, Austria); Research for International Tobacco Control, the International Development Research Centre, the South African Medical Research Council, the South African Thoracic Society GlaxoSmithKline Pulmonary Research Fellowship, and the University of Cape Town Lung Institute (Cape Town, South Africa); and Landspítali-University Hospital-Scientific Fund, GlaxoSmithKline Iceland, and AstraZeneca Iceland (Reykjavik, Iceland); GlaxoSmithKline Pharmaceuticals, Polpharma, Ivax Pharma Poland, AstraZeneca Pharma Poland, ZF Altana Pharma, Pliva Krakow, Adamed, Novartis Poland, Linde Gaz Polska, Lek Polska, Tarchominskie Zakłady Farmaceutyczne Polfa, Starostwo Proszowice, Skanska, Zasada, Agencja Mienia Wojskowego w Krakowie, Telekomunikacja Polska, Biernacki, Biogran, Amplus Bucki, Skrzydlewski, Sotwin, and Agropilon (Cracow, Poland); BoehringerIngelheim, and Pfizer Germany (Hannover, Germany); the Norwegian Ministry of Health's Foundation for Clinical Research, and Haukeland University Hospital's Medical Research Foundation for Thoracic Medicine (Bergen, Norway); AstraZeneca, Boehringer-Ingelheim, Pfizer, and GlaxoSmithKline (Vancouver, Canada); Marty Driesler Cancer Project (Lexington, Kentucky); Altana, Boehringer Ingelheim (Phil), GlaxoSmithKline, Pfizer, Philippine College of Chest Physicians, Philippine College of Physicians, and United Laboratories (Phil) (Manila, Philippines); Air Liquide Healthcare P/L, AstraZeneca P/L, Boehringer Ingelheim P/L, GlaxoSmithKline Australia P/L, Pfizer Australia P/L (Sydney, Australia), Department of Health Policy Research Programme, Clement Clarke International (London, UK); Boehringer Ingelheim and Pfizer (Lisbon, Portugal), Swedish Heart and Lung Foundation, The Swedish Association against Heart and Lung Diseases, Glaxo Smith Kline (Uppsala, Sweden), Seed Money Grant (PF20/0512), Aga Khan University, and Chiesi Pakistan (Pvt.) Limited (Karachi, Pakistan).

## Disclosure statement

DM is a consultant to AstraZeneca, GlaxoSmithKline, Regeneron, Genentech, Up-to-Date and is an expert witness on behalf of people suing the tobacco and vaping industries.

FR reports grants and personal fees from A. Menarini, Boehringer Ingelheim, Teva Pharma, Novartis, GlaxoSmithKline, AstraZeneca, VitalAire and Nippon Gases outside the submitted work.

DJAJ reports lecture fees from AstraZeneca, Abbott and Chiesi, all paid to the institution and outside the submitted work.

## Funding

Wellcome Trust grant [085790/Z/08/Z]. The funders of the study did not contribute to the study design, data collection, data analysis or writing of the manuscript.

## ORCID

Alexander Müller  <http://orcid.org/0009-0004-2559-7760>

Daisy J. A. Janssen  <http://orcid.org/0000-0002-1827-9869>

André F. S. Amaral  <http://orcid.org/0000-0002-0369-9449>

## Author contributions

AM, EFMW, DJAJ and AFSA conceived the study. Under the supervision of EFMW, DJAJ, and AFSA, AM performed data analysis and prepared the initial draft. All authors provided critical revision of the manuscript, as well as read and approved the final manuscript.

## References

1. Parshall MB, Schwartzstein RM, Adams L, et al. An official american thoracic society statement: update on the mechanisms, assessment, and management of dyspnea. *Am J Respir Crit Care Med*. 2012;185(4):435–452. doi: 10.1164/rccm.201111-2042ST.
2. Bowden JA, To TH, Abernethy AP, et al. Predictors of chronic breathlessness: a large population study. *BMC Public Health*. 2011;11(1):33. doi: 10.1186/1471-2458-11-33.
3. Müller A, Mraz T, Wouters EF, et al. Prevalence of dyspnea in general adult populations: a systematic review and meta-analysis. *Respir Med*. 2023;218:107379. doi: 10.1016/j.rmed.2023.107379.
4. Müller A, Wouters EF, Koul P, et al. Association between lung function and dyspnoea and its variation in the multinational burden of obstructive lung disease (BOLD) study. *Pulmonology*. 2025;31(1). doi: 10.1016/j.pulmo.2024.03.005.
5. Ekström M, Sundh J, Andersson A, et al. Exertional breathlessness related to medical conditions in middle-aged people: the population-based SCAPIS study of more than 25,000 men and women. *Respir Res*. 2024;25(1):127. doi: 10.1186/s12931-024-02766-6.
6. Olsson M, Björkelund AJ, Sandberg J, et al. Factors most strongly associated with breathlessness in a population aged 50–64 years. *ERJ Open Res*. 2024;10(2):00582–2023. doi: 10.1183/23120541.00582-2023.
7. Coccia CB, Palkowski GH, Schweitzer B, et al. Dyspnoea: pathophysiology and a clinical approach. *S Afr Med J*. 2016;106(1):32–36. doi: 10.7196/samj.2016.v106i1.10324.
8. Currow DC, Dal Grande E, Ferreira D, et al. Chronic breathlessness associated with poorer physical and mental health-related quality of life (SF-12) across all adult age groups. *Thorax*. 2017;72(12):1151–1153. doi:10.1136/thoraxjnl-2016-209908.
9. Currow DC, Chang S, Grande ED, et al. Quality of life changes with duration of chronic breathlessness: a random sample of community-dwelling people. *J Pain Symptom Manage*. 2020;60(4):818–827.e4. doi: 10.1016/j.jpainsymman.2020.05.015.
10. Cristea L, Olsson M, Currow D, et al. Breathlessness dimensions association with physical and mental quality of life: the population based VASCOL study of elderly men. *BMJ Open Respir Res*. 2021;8(1):e000990. doi: 10.1136/bmjresp-2021-000990.
11. Janson C, Marks G, Buist S, et al. The impact of COPD on health status: findings from the BOLD study. *Eur Respir J*. 2013;42(6):1472–1483. doi: 10.1183/09031936.00153712.
12. Voll-Aanerud M, Eagan TM, Plana E, et al. Respiratory symptoms in adults are related to impaired quality of life, regardless of asthma and COPD: results from the European community respiratory health survey. *Health Qual Life Outcomes*. 2010;8(1):107. doi: 10.1186/1477-7525-8-107.
13. Miravittles M, Naberan K, Cantoni J, et al. Socioeconomic status and health-related quality of life of patients with chronic obstructive pulmonary disease. *Respiration*. 2011;82(5):402–408. doi: 10.1159/000328766.
14. Amaral AFS, Potts J, Knox-Brown B, et al. Cohort profile: burden of obstructive lung disease (BOLD) study. *Int J Epidemiol*. 2023;52(6):e364–e373. doi: 10.1093/ije/dyad146.
15. Enright P, Vollmer WM, Lamprecht B, et al. Quality of spirometry tests performed by 9893 adults in 14 countries: the BOLD study. *Respir Med*. 2011;105(10):1507–1515. doi: 10.1016/j.rmed.2011.04.008.
16. Sunjaya A, Poulos L, Reddel H, et al. Qualitative validation of the modified medical research council (mMRC) dyspnoea scale as a patient-reported measure of breathlessness severity. *Respir Med*. 2022;203:106984. doi: 10.1016/j.rmed.2022.106984.
17. Bullinger M, Alonso J, Apolone G, et al. Translating health status questionnaires and evaluating their quality: the IQOLA project approach. International quality of life assessment. *J Clin Epidemiol*. 1998;51(11):913–923. doi: 10.1016/s0895-4356(98)00082-1.
18. Ware JJ, Kosinski M, Keller SD. A 12-item short-form health survey: construction of scales and preliminary tests of reliability and validity. *Med Care*. 1996;34(3):220–233. doi: 10.1097/00005650-199603000-00003.
19. Hankinson JL, Odencrantz JR, Fedan KB. Spirometric reference values from a sample of the general U.S. population. *Am J Respir Crit Care Med*. 1999;159(1):179–187. doi: 10.1164/ajrccm.159.1.9712108.
20. World Bank Group. <https://databank.worldbank.org/reports.aspx?source=2&country=HIC#>. Accessed May 20, 2024.
21. Wyrwich KW, Tierney WM, Babu AN, et al. A comparison of clinically important differences in health-related quality of life for patients with chronic lung disease, asthma, or heart disease. *Health Serv Res*. 2005;40(2):577–591. doi: 10.1111/j.1475-6773.2005.01374.x.
22. Norman GR, Sloan JA, Wyrwich KW. Interpretation of changes in health-related quality of life: the remarkable universality of half a standard deviation. *Med Care*. 2003;41(5):582–592. doi: 10.1097/01.MLR.0000062554.74615.4C.
23. Gandek B, Ware JE, Aaronson NK, et al. Cross-validation of item selection and scoring for the SF-12 health survey in nine countries: results from the IQOLA project. International quality of life assessment. *J Clin Epidemiol*. 1998;51(11):1171–1178. doi: 10.1016/s0895-4356(98)00109-7.
24. Kochovska S, Chang S, Morgan DD, et al. Activities forgone because of chronic breathlessness: a cross-sectional population prevalence study. *Palliat Med Rep*. 2020;1(1):166–170. doi: 10.1089/pmr.2020.0083.

25. Ekström M, Johnson MJ, Taylor B, et al. Breathlessness and sexual activity in older adults: the Australian longitudinal study of ageing. *NPJ Prim Care Respir Med.* 2018;28(1):20. doi: [10.1038/s41533-018-0090-x](https://doi.org/10.1038/s41533-018-0090-x).
26. Kim HC, Mofarrah M, Hussain SN. Skeletal muscle dysfunction in patients with chronic obstructive pulmonary disease. *Int J Chron Obstruct Pulmon Dis.* 2008;3(4):637–658. doi: [10.2147/copd.s4480](https://doi.org/10.2147/copd.s4480).
27. Yorke J, Russell AM, Swigris J, et al. Assessment of dyspnea in asthma: validation of the Dyspnea-12. *J Asthma.* 2011;48(6):602–608. doi: [10.3109/02770903.2011.585412](https://doi.org/10.3109/02770903.2011.585412).
28. Banzett RB, O'Donnell CR, Guilfoyle TE, et al. Multidimensional dyspnea profile: an instrument for clinical and laboratory research. *Eur Respir J.* 2015;45(6):1681–1691. doi: [10.1183/09031936.00038914](https://doi.org/10.1183/09031936.00038914).
29. Ekström M, Schiöler L, Grønseth R, et al. Absolute values of lung function explain the sex difference in breathlessness in the general population. *Eur Respir J.* 2017;49(5):1602047. doi: [10.1183/13993003.02047-2016](https://doi.org/10.1183/13993003.02047-2016).
30. Ekström M, Sundh J, Schiöler L, et al. Absolute lung size and the sex difference in breathlessness in the general population. *PLOS ONE.* 2018;13(1):e0190876. doi: [10.1371/journal.pone.0190876](https://doi.org/10.1371/journal.pone.0190876).
31. LoMauro A, Aliverti A. Sex and gender in respiratory physiology. *Eur Respir Rev.* 2021;30(162):210038. doi: [10.1183/16000617.0038-2021](https://doi.org/10.1183/16000617.0038-2021).
32. Katsura H, Yamada K, Wakabayashi R, et al. Gender-associated differences in dyspnoea and health-related quality of life in patients with chronic obstructive pulmonary disease. *Respirology.* 2007;12(3):427–432. doi: [10.1111/j.1440-1843.2007.01075.x](https://doi.org/10.1111/j.1440-1843.2007.01075.x).
33. Chhabra SK, Chhabra P. Gender differences in perception of dyspnea, assessment of control, and quality of life in asthma. *J Asthma.* 2011;48(6):609–615. doi: [10.3109/02770903.2011.587577](https://doi.org/10.3109/02770903.2011.587577).
34. Elbehairy AF, Guenette JA, Faisal A, et al. Mechanisms of exertional dyspnoea in symptomatic smokers without COPD. *Eur Respir J.* 2016;48(3):694–705. doi: [10.1183/13993003.00077-2016](https://doi.org/10.1183/13993003.00077-2016).
35. Jing Z, Li J, Wang Y, et al. Association of smoking status and health-related quality of life: difference among young, middle-aged, and older adults in Shandong, China. *Qual Life Res.* 2021;30(2):521–530. doi: [10.1007/s11136-020-02645-9](https://doi.org/10.1007/s11136-020-02645-9).
36. López-Nicolás Á, Trapero-Bertran M, Muñoz C. Smoking, health-related quality of life and economic evaluation. *Eur J Health Econ.* 2018;19(5):747–756. doi: [10.1007/s10198-017-0919-1](https://doi.org/10.1007/s10198-017-0919-1).
37. Hutchinson A, Barclay-Kling N, Galvin K, et al. Living with breathlessness: a systematic literature review and qualitative synthesis. *Eur Respir J.* 2018;51(2):1701477. doi: [10.1183/13993003.01477-2017](https://doi.org/10.1183/13993003.01477-2017).
38. Spathis A, Booth S, Moffat C, et al. The breathing, thinking, functioning clinical model: a proposal to facilitate evidence-based breathlessness management in chronic respiratory disease. *NPJ Prim Care Respir Med.* 2017;27(1):27. doi: [10.1038/s41533-017-0024-z](https://doi.org/10.1038/s41533-017-0024-z).