

# A Phase I Dose-Escalation Study to Assess Safety, Tolerability, Pharmacokinetics, and Preliminary Efficacy of the Dual mTORC1/mTORC2 Kinase Inhibitor CC-223 in Patients With Advanced Solid Tumors or Multiple Myeloma

Johanna C. Bendell, MD<sup>1</sup>; Robin K. Kelley, MD<sup>2</sup>; Kent C. Shih, MD<sup>1</sup>; Jennifer A. Grabowsky, PharmD<sup>2</sup>; Emily Bergsland, MD<sup>2</sup>; Suzanne Jones, PharmD<sup>1</sup>; Thomas Martin, MD<sup>2</sup>; Jeffrey R. Infante, MD<sup>1</sup>; Paul S. Mischel, MD<sup>3</sup>; Tomoo Matsutani, MD, PhD<sup>3</sup>; Shuichan Xu, PhD<sup>4</sup>; Lilly Wong, PhD<sup>4</sup>; Yong Liu, PhD<sup>5</sup>; Xiaoling Wu, PhD<sup>6</sup>; Deborah S. Mortensen, PhD<sup>4</sup>; Rajesh Chopra, MD, PhD<sup>5</sup>; Kristen Hege, MD<sup>7</sup>; and Pamela N. Munster, MD<sup>2</sup>

**BACKGROUND:** The mammalian target of rapamycin (mTOR) pathway is essential for tumor development, yet mTOR inhibitors have yielded modest results. This phase 1 study investigated the mTORC1/mTORC2 inhibitor CC-223 in patients with advanced cancer. **METHODS:** Patients with advanced solid tumors or multiple myeloma received an initial dose of 7.5-60 mg of CC-223, followed by oral daily dosing in 28-day cycles until disease progression. The primary objective was to determine the safety, tolerability, nontolerated dosage, maximum tolerated dosage (MTD), and preliminary pharmacokinetic profile. Secondary objectives were to evaluate pharmacodynamic effects and to describe preliminary efficacy. **RESULTS:** Twenty-eight patients were enrolled and received  $\geq 1$  dose of CC-223. The most common treatment-related grade 3 adverse events were hyperglycemia, fatigue, and rash. Four patients had dose-limiting toxicities, including hyperglycemia, rash, fatigue, and mucositis. Therefore, 45 mg/d was determined to be the MTD. The pharmacokinetics of CC-223 demonstrated a mean terminal half-life ranging from 4.86 to 5.64 hours and maximum observed plasma concentration ranging from 269 to 480 ng/mL in patients who received CC-223  $\geq 45$  mg/d. Phosphorylation of mTORC1/mTORC2 pathway biomarkers in blood cells was inhibited by CC-223  $\geq 30$  mg/d with an exposure-response relationship. Best responses included 1 partial response (breast cancer; response duration 220 days; 30-mg/d cohort), stable disease (8 patients across  $\geq 15$  mg/d cohorts; response duration range, 36-168 days), and progressive disease (12 patients). The disease control rate was 32%. **CONCLUSIONS:** CC-223 was tolerable, with manageable toxicities. Preliminary antitumor activity, including tumor regression, and evidence of mTORC1/mTORC2 pathway inhibition were observed. *Cancer* 2015;121:3481-90. © 2015 The Authors. *Cancer* published by Wiley Periodicals, Inc. on behalf of *American Cancer Society*. This is an open access article under the terms of the Creative Commons Attribution-NonCommercial-NoDerivs License, which permits use and distribution in any medium, provided the original work is properly cited, the use is non-commercial and no modifications or adaptations are made.

**KEYWORDS:** AKT, mTOR, mTORC1/mTORC2, rapalogs.

## INTRODUCTION

The phosphoinositide 3-kinase (PI3K), protein kinase B (AKT), mammalian target of rapamycin (mTOR) pathway is essential for tumor cell proliferation, survival, and metabolic activity in many cancers.<sup>1,2</sup>

Inhibitors of the mTOR pathway, such as rapamycin and its analogs (ie, rapalogs), have been extensively studied as anticancer treatments, and several (temsirolimus, everolimus, and ridaforolimus) have been approved or are in phase 3 trials for different cancer types.<sup>3-5</sup> However, these have yielded modest single-agent clinical activity.<sup>4-6</sup> Rapalogs predominantly inhibit mTOR complex 1 (mTORC1), and the efficacy of rapalogs may be partially restricted by failure to prevent AKT activation through mTOR complex 2 (mTORC2), a functionally distinct mTOR complex, or by limited inhibition of mTORC1-mediated phosphorylation of eukaryotic translation initiation factor 4E-binding protein 1 (4EBP1).<sup>6,7</sup> The 4EBPs are critical mediators of mTORC1 effects on cell proliferation,<sup>8</sup> and rapalogs do not inhibit

**Corresponding author:** Pamela N. Munster, MD, Helen Diller Family Comprehensive Cancer Center, University of California, San Francisco, 1600 Divisadero St., MZ Building A, San Francisco, CA 94143. Fax: (415) 353-7779; pmunster@medicine.ucsf.edu

<sup>1</sup>Sarah Cannon Research Institute, Nashville, Tennessee; <sup>2</sup>Helen Diller Family Comprehensive Cancer Center, University of California, San Francisco, California; <sup>3</sup>Ludwig Institute for Cancer Research, University of California at San Diego, La Jolla, California; <sup>4</sup>Celgene Corporation, San Diego, California; <sup>5</sup>Celgene Corporation, Summit, New Jersey; <sup>6</sup>Celgene Corporation, Berkeley Heights, New Jersey; <sup>7</sup>Celgene Corporation, San Francisco, California

See editorial on pages 3390-2, this issue.

ClinicalTrials.gov Identifier: NCT01177397.

Additional Supporting Information may be found in the online version of this article.

**DOI:** 10.1002/cncr.29422, **Received:** November 6, 2014; **Revised:** January 12, 2015; **Accepted:** January 13, 2015, **Published online** July 15, 2015 in Wiley Online Library (wileyonlinelibrary.com)

mTORC1-mediated phosphorylation of 4EBP1.<sup>7</sup> Inhibition of both mTORC1 and mTORC2 leads to more effective inhibition of cancer cell proliferation than blocking mTORC1 alone.<sup>6,8</sup> Inhibitors of mTOR kinase that function through both the 4EBP1 and p70 S6 kinase 1 arms of mTORC1 and the mTORC2 kinase pathway are in clinical development.<sup>9,10</sup>

CC-223 is an adenosine-5'-triphosphate-competitive inhibitor of the mTOR kinase that targets mTORC1 (both 4EBP1 and p70 S6 kinase 1) and mTORC2, preventing upregulation of AKT phosphorylation, differentiating it from the rapalogs.<sup>11,12</sup> In preclinical studies, CC-223 was a potent (half-maximal inhibitory concentration = 16 nM) mTOR kinase inhibitor with >150-fold sensitivity over the related lipid kinase, PI3K $\alpha$ .<sup>12,13</sup> CC-223 is active against many non-Hodgkin lymphoma cell lines<sup>13</sup> and solid tumor lines, including breast, glioma, hepatocellular carcinoma (HCC), and non-small cell lung cancer. CC-223 has demonstrated single-agent activity in several human tumor xenograft models, including U87 glioblastoma multiforme and PC3 prostate cancer.<sup>12,13</sup>

The primary objective of this phase 1 study was to determine the safety, tolerability, nontolerated dosage (NTD), and maximum tolerated dosage (MTD) of orally administered CC-223 and the preliminary pharmacokinetics (PK) of CC-223 in patients with advanced solid tumors (AST) or multiple myeloma (MM). Secondary objectives were to evaluate inhibition of tissue biomarkers S6 ribosomal protein (S6RP), 4EBP1, and AKT following treatment and to describe preliminary efficacy of CC-223.

## PATIENTS AND METHODS

### Patients

Patients  $\geq 18$  years of age with histologically or cytologically confirmed MM or AST who had progressed on standard therapy or were unable to tolerate standard anti-cancer therapy were eligible. An Eastern Cooperative Oncology Group performance status  $\leq 1$  was required for patients with solid tumors or  $\leq 2$  for patients with hematologic malignancies. Eligible patients had adequate bone marrow, hepatic, and renal function. Patients with symptomatic central nervous system metastases, acute or chronic pancreatitis, impaired cardiac function, diabetes requiring treatment, grade  $\geq 2$  peripheral neuropathy, or grade  $\geq 2$  diarrhea were excluded.

### Study Design

This phase 1/2 study was divided into 2 parts: dose escalation to MTD (Part A) and dose expansion into parallel cohorts of selected tumor types (Part B). We herein

describe the results of Part A (Part B is ongoing). In Part A, patients received escalating doses of CC-223 in a modified accelerated titration design.<sup>14</sup>

This study was conducted in compliance with the Declaration of Helsinki and its amendments, the relevant International Conference on Harmonisation Good Clinical Practice guidelines, and local Institutional Review Boards, Independent Ethics Committees, or Research Ethics Boards. All study participants provided written informed consent before enrolling.

### Treatment

On day -1, patients received an initial dose of CC-223, starting at 7.5 mg, followed by 48-hour observation and PK sample collection. Oral daily dosing began on day 1 and was maintained in 28-day cycles until clinically significant disease progression, intolerable toxicities, or consent withdrawal. Patients fasted  $\geq 6$  hours before each CC-223 dose. Initial cohorts of 1 patient each received CC-223 at dose increments of 100% until the first instance of CC-223-related, grade  $\geq 2$  toxicity, at which point the accelerated dose escalation phase was terminated and the cohort expanded to 6 patients. Thereafter, CC-223 was increased in  $\sim 50\%$  increments in cohorts of 6 patients. If  $\geq 2$  patients experienced dose-limiting toxicity (DLT), the dose was considered nontolerated and dose escalation was stopped. The MTD was defined as the last dose tested below the NTD with 0 or 1 of 6 evaluable patients experiencing DLT during cycle 1. Adverse events (AEs) and DLTs were assessed using the National Cancer Institute Common Terminology Criteria for Adverse Events (version 4).<sup>15</sup>

The Safety Review Committee allowed additional patients to be enrolled in selected dosing cohorts to gather further PK, pharmacodynamic (PD), and safety data. Patients in lower-dose cohorts were allowed to receive higher doses once tolerability of that dose was established. A protocol amendment revised the criteria for DLTs to allow management of selected, expected AEs (eg, hyperglycemia, rash) with optimal supportive care. Patients requiring dose reductions because of DLTs or dose delays because of AEs were permitted to continue treatment as tolerated.

### Assessments

Tumor assessments were based on computed tomography or magnetic resonance imaging. Tumor responses were based on response evaluation criteria in solid tumors (RECIST) version 1.1,<sup>16</sup> international uniform response criteria for MM,<sup>17</sup> and revised response assessment criteria for high-grade gliomas.<sup>18</sup> All patients who met

**TABLE 1.** Patient Characteristics (N = 28)

Characteristic	Value
Age, mean (range), y	50 (25-80)
Sex, n (%)	
Men	9 (32)
Women	19 (68)
ECOG performance status, n (%)	
0	16 (57)
1	11 (39)
2	1 (4)
Tumor type, n (%)	
Colorectal cancer	6 (21)
Breast cancer	3 (11)
Pancreatic cancer	3 (11)
Non-small cell lung cancer	2 (7)
Glioblastoma multiforme	2 (7)
HCC	2 (7)
Salivary gland cancer	2 (7)
Other <sup>a</sup>	8 (29)
Prior systemic anticancer therapies, n (%)	
1-3	14 (50)
>3	14 (50)

Abbreviation: ECOG, Eastern Cooperative Oncology Group; HCC, hepatocellular carcinoma.

<sup>a</sup>Other tumors (n=1 each): adenocystic, adrenal, esophageal, multiple myeloma, neuroendocrine, paraganglioma, renal, and sarcoma.

eligibility criteria, completed  $\geq 1$  cycle of CC-223, and had baseline and  $\geq 1$  postbaseline efficacy assessment were considered evaluable for efficacy.

### Pharmacokinetic Evaluation

Blood samples for PK were collected predose on day -1 and at 0.5, 1, 1.5, 3, 5, 8, 24, and 48 hours postdose, as well as predose on day 15 and at 0.5, 1, 1.5, 3, 5, and 8 hours postdose. Urine for PK analyses on day -1 through day 0 was taken <30 minutes before dosing and 0-4, 4-8, and 8-24 hours postdose. Plasma and urine CC-223 were measured using validated chiral liquid chromatography mass spectrometry methods. Blood samples for biomarker analyses were collected at screening within 24 hours of day -1; within 15 minutes predose on days -1, 1, 8, 15, and 22 of cycle 1; and predose on day 1 in cycle 2. Blood samples were drawn on day -1 at 1.5, 3, and 5 hours postdose; on days 1, 8, 15, and 22 at 1.5 hours postdose in cycle 1; and on day 1 at 1.5 hours postdose in cycle 2. Pharmacokinetic parameters were calculated using nonlinear mixed effects modeling (NONMEM, version 7.2; ICON, Dublin, Ireland).

### Blood Biomarker Analysis

Blood samples (2 mL) were collected in sodium-heparin tubes from patients in all cohorts. The blood was loaded into a 96 deep-well plate, incubated for 1 hour at 37°C, then stimulated with anti-immunoglobulin D and lipopolysaccharide for 15 minutes. The samples were treated

with Lyse/Fix Buffer (Becton-Dickinson; Franklin Lakes, NJ) for 10 minutes at 37°C. The plates were centrifuged and aspirated, and 1 mL of ice-cold 100% methanol was added to the wells. Following overnight incubation at -80°C, plates were centrifuged, aspirated, and washed twice with phosphate-buffered saline containing 0.5% bovine serum albumin. Samples were stained with cell surface markers (CD3, CD14, and CD20) and intracellular markers (pAKT, pS6RP, and p4EBP1), then washed twice and fixed with 1.6% paraformaldehyde; data were acquired on a flow cytometer. The raw measurements were expressed as median fluorescence intensity values, which were normalized against calibration beads using a linear regression transformation performed on a log-log scale, and then reported as equivalent reference fluorophores.

### Immuno-histochemical Staining

Optional pretreatment and on-treatment tumor biopsies were collected from 2 patients (30-mg/d cohort) for immune-histochemical analyses of pS6RP, p4EBP1, pPRAS40, pAKT, Ki-67, and *terminal deoxynucleotidyl transferase dUTP nick end labeling* (TUNEL), as described previously.<sup>19</sup> Paraffin-embedded tissue blocks were sectioned, and immunohistochemistry was performed for each antibody.

### Sequence Analysis

Pretreatment tumor samples for DNA extraction were obtained from 4 patients and analyzed using next-generation sequencing (Foundation Medicine, Cambridge, MA). DNA was extracted from 40  $\mu$ g of formalin-fixed paraffin embedded pre-treatment tumor samples. DNA sequencing was performed for 3230 exons from 182 cancer-related genes plus 37 introns from 14 genes often rearranged in cancer on indexed, adaptor-ligated, hybridization-captured libraries (Agilent SureSelect custom kit). For all specimens,  $\geq 25\%$  of the nuclear area was malignant tumor cells; therefore, no micro/macro-dissection tissue enrichment was performed. Sequencing on the HiSeq2000 instrument (Illumina, San Diego, CA) was to an average median depth of  $>500\times$ , with  $>99\%$  of bases covering  $>100\times$ . Sequence data from genomic DNA and complementary DNA were mapped to the reference human genome (hg19) using the Burrows-Wheeler Aligner1 program and processed using publicly available SAMtools2, Picard (<http://picard.sourceforge.net>), and GATK3 (Broad Institute, Cambridge, MA). Genomic base substitutions and indels were detected using custom tools optimized for mutation calling in heterogeneous tumor samples, based on statistical modeling of sequence quality

scores and local sequence assembly. Variations were filtered using dbSNP and custom artifact database, then annotated for known and likely somatic mutations using Catalogue of Somatic Mutations in Cancer (Wellcome Trust Sanger Institute, Genome Research, London, UK). Copy number alterations were detected by comparing targeted genomic DNA sequence coverage with a process-matched normal control sample. Genomic rearrangements were detected by clustering chimeric reads mapping to targeted introns.

**Statistical Analysis**

Summary/descriptive statistics (eg, means, medians) were used to describe continuous variables; frequency and percentages were used to describe discrete variables. Population PK/PD modeling was performed using NONMEM version 7.2 (ICON).

**RESULTS**

**Study Population**

Twenty-eight patients were enrolled and received  $\geq 1$  CC-223 dose (Table 1) in five escalating dose cohorts. All enrolled patients had AST or MM, and 14 patients (50%) had received  $>3$  prior treatment regimens. Patients received CC-223 for a median of 54 days, which was longest in the 60-mg/d cohort (58 days). Six and 22 patients required dose reductions and interruptions, respectively (Table 2). Overall, the median time to dose reduction was

25 days. Four patients were removed from the study during cycle 1 and replaced because they had disease progression, withdrew consent, or did not meet inclusion/exclusion criteria. Intracohort dose escalation occurred in 2 patients who started dosing at 30 mg/d and increased to 45 mg/d.

**Safety**

Four patients experienced DLTs during treatment cycle 1, including grade 3 hyperglycemia (30 mg/d), grade 3 rash lasting 5 days (45 mg/d), grade 3 fatigue lasting 10 days (60 mg/d), and grade 3 mucositis lasting 6 days (60 mg/d). Thus, 45 mg/d was determined to be the MTD; 60 mg/d was the NTD.

The most common treatment-related AEs were fatigue (64%), nausea (50%), diarrhea (46%), hyperglycemia (43%), mucositis (39%), vomiting (32%), decreased appetite (32%), asthenia (25%), and rash (25%) (Table

**TABLE 2.** Study Population

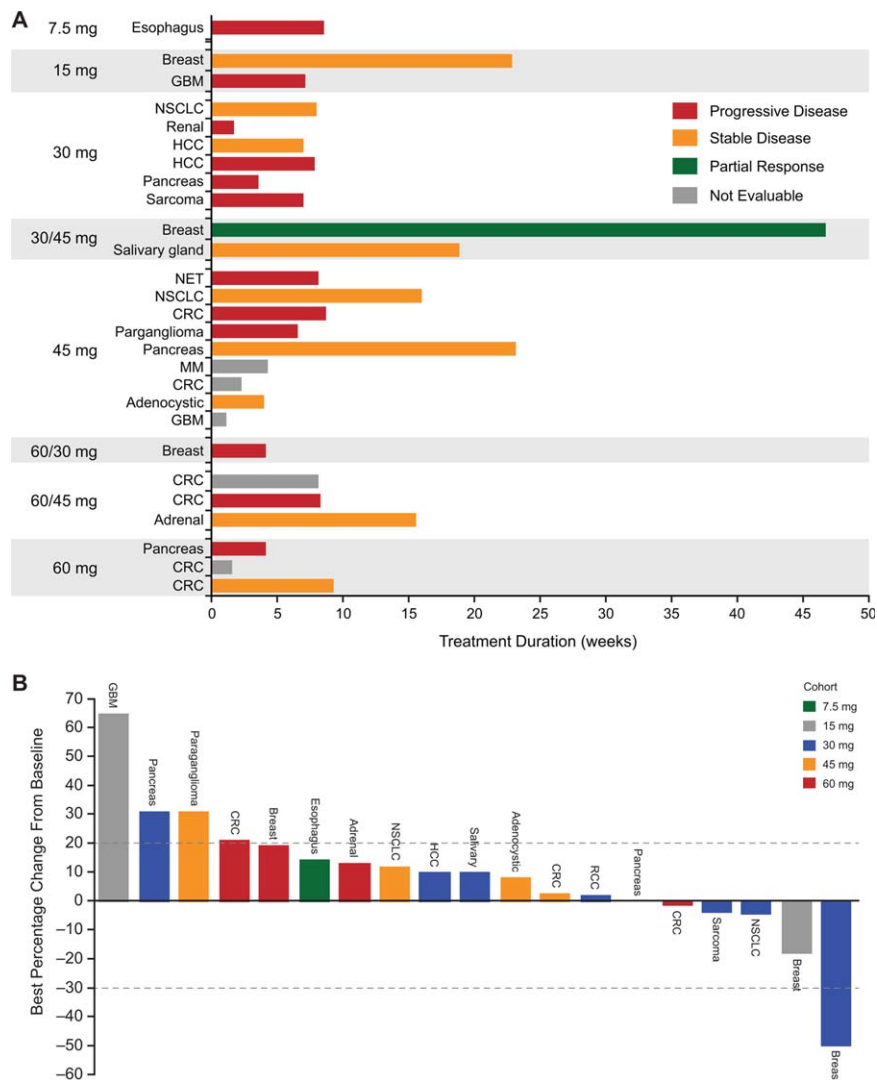
	15 mg	30 mg	45 mg	60 mg	Total
Dose reductions	0	0	1	5	6
Dose interruptions	2	8	5	7	22
Removed from study	0	2	1	1	4
Discontinued due to AE	0	1	2	0	3
Died	0	2	2	1	5

Abbreviation: AE, adverse event.

**TABLE 3.** Most Common Treatment-Related Adverse Events Reported in  $\geq 10\%$  of Patients

Adverse Event	Dose										Overall (N = 28)	
	7.5 mg (n = 1)		15 mg (n = 2)		30 mg (n = 9)		45 mg (n = 9)		60 mg (n = 7)		Any Grade	Grade $\geq 3$
	Any Grade	Grade $\geq 3$	Any Grade	Grade $\geq 3$	Any Grade	Grade $\geq 3$	Any Grade	Grade $\geq 3$	Any Grade	Grade $\geq 3$		
Fatigue	1 (100)	0	1 (50)	0	4 (44)	0	5 (56)	1 (11)	7 (100)	1 (14)	18 (64)	2 (7)
Nausea	1 (100)	0	0	0	4 (44)	0	6 (67)	0	3 (43)	0	14 (50)	0
Diarrhea	0	0	1 (50)	0	3 (33)	0	4 (44)	0	5 (71)	1 (14)	13 (46)	1 (4)
Hyperglycemia	0	0	0	0	4 (44)	2 (22)	4 (44)	1 (11)	4 (57)	2 (29)	12 (43)	5 (18)
Mucositis	0	0	1 (50)	0	2 (22)	0	3 (33)	0	5 (71)	2 (29)	11 (39)	2 (7)
Decreased appetite	0	0	0	0	4 (44)	0	3 (33)	0	2 (29)	0	9 (32)	0
Vomiting	0	0	0	0	2 (22)	0	2 (22)	0	5 (71)	0	9 (32)	0
Asthenia	0	0	1 (50)	0	2 (22)	0	1 (11)	0	3 (43)	0	7 (25)	0
Rash	0	0	1 (50)	0	1 (11)	0	2 (22)	1 (11)	3 (43)	1 (14)	7 (25)	2 (7)
Dysgeusia	1 (100)	0	1 (50)	0	0	0	2 (22)	0	1 (14)	0	5 (18)	0
Arthralgia	0	0	0	0	0	0	2 (22)	0	2 (29)	1 (14)	4 (14)	1 (4)
Increased glycosylated hemoglobin	0	0	0	0	0	0	2 (22)	0	2 (29)	0	4 (14)	0
Pruritus	0	0	1 (50)	0	1 (11)	0	2 (22)	0	0	0	4 (14)	0
Dry mouth	0	0	0	0	1 (11)	0	2 (22)	0	0	0	3 (11)	0
Dyspnea	0	0	0	0	1 (11)	0	1 (11)	0	1 (14)	0	3 (11)	0
Rash pruritic	0	0	0	0	1 (11)	0	0	0	2 (29)	2 (29)	3 (11)	2 (7)
Thrombocytopenia	0	0	0	0	1 (11)	0	2 (22)	0	0	0	3 (11)	0

Data are presented as n (%).



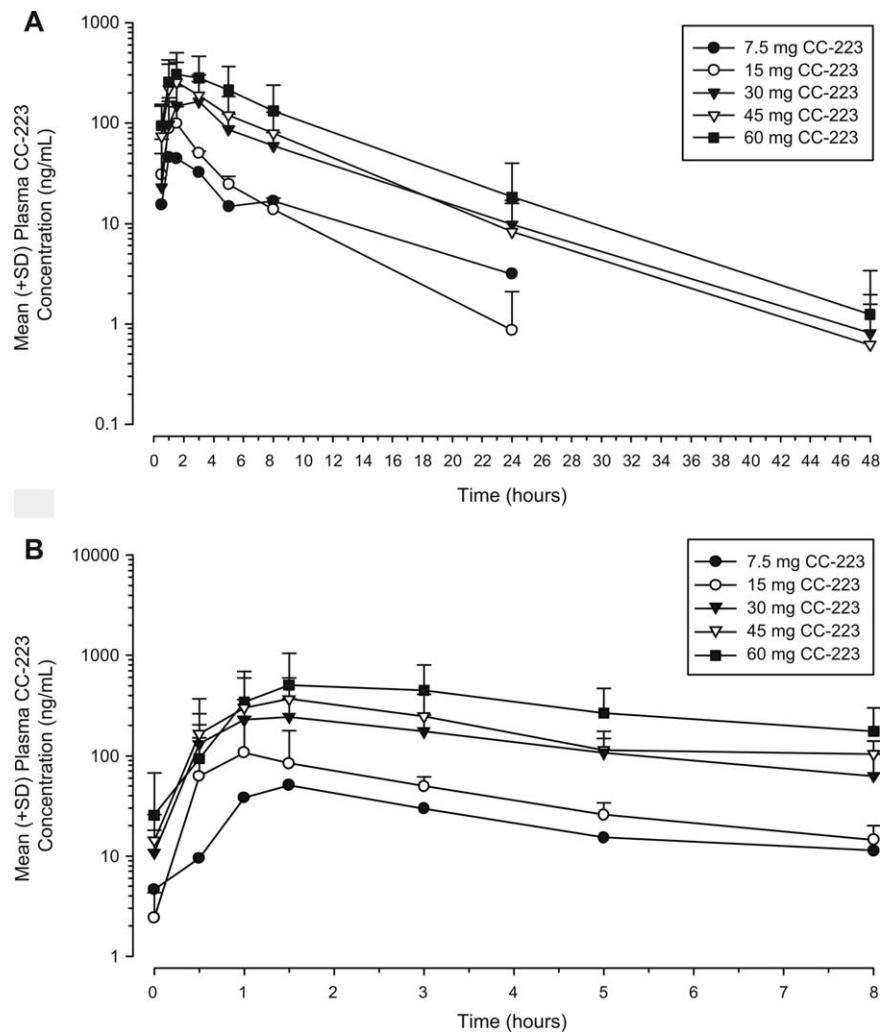
**Figure 1.** (A) Response relative to time on CC-223 treatment and (B) best percentage change from baseline in total length of target lesions were evaluated in 28 and 19 patients, respectively. Abbreviations: CRC, colorectal carcinoma; GBC, glioblastoma multiforme; HCC, hepatocellular carcinoma; MM, multiple myeloma; NET, (gastrointestinal) neuroendocrine tumor (of nonpancreatic origin); NSCLC, non-small cell lung cancer; RCC, renal cell carcinoma.

3). The most common treatment-related AE of grade  $\geq 3$  was hyperglycemia (18%), which was reported in the 30-mg/d (n = 2), 45-mg/d (n = 1), and 60-mg/d cohorts (n = 2). Hyperglycemia was monitored by daily finger-stick glucose testing and managed effectively with metformin and/or insulin. One case of treatment-related grade 3 pneumonitis was reported. Most enrolled patients (n = 17; 61%) discontinued treatment because of disease progression, with similar percentages in the 30-mg/d (56%), 45-mg/d (56%), and 60-mg/d (57%) cohorts.

Five patients died within 28 days of last treatment. Each death was attributed to disease progression unrelated to treatment.

**Efficacy**

Twenty patients were evaluable for efficacy. No patient had a complete response. One breast cancer patient (3.6%) in the 30-mg/d cohort had a partial response (PR) (Fig. 1A). In addition, 5 patients had reduction in target lesions (Fig. 1B). The best overall response rate per investigator (safety population) was 3.6% (90% confidence interval, 0.2%-15.9%), and 8 patients (29%) had stable disease (SD); therefore, the disease control rate was 32.1% (90% confidence interval, 17.9%-49.4%), and there was no clear dose dependence. Six patients had disease control durations of >100 days (range, 110-220 days), including 2 of 3e patients with breast cancer (1 PR and 1 SD) with



**Figure 2.** Mean (+standard deviation [SD]) plasma concentration-time profiles of CC-223 are presented on semi-log scale on (A) day -1 after single dose and (B) day 15 after multiple doses.

disease control durations of 220 and 168 days, respectively.

The patient with PR had estrogen receptor–positive/human epidermal growth factor receptor 2–negative breast cancer with >50% regression in target lesions; her response lasted 220 days (Supporting Fig. 1). She had received 7 prior anticancer regimens, including chemotherapy, antibody therapy, protein kinase inhibitors, and hormonal therapy, but no prior everolimus. Her best prior response was SD lasting 8 months following PI3K inhibitor therapy. She was treated with CC-223 for 11 cycles (30 mg/d for 5 cycles followed by 45 mg/d for 6 cycles without dose interruptions or reductions) until progression.

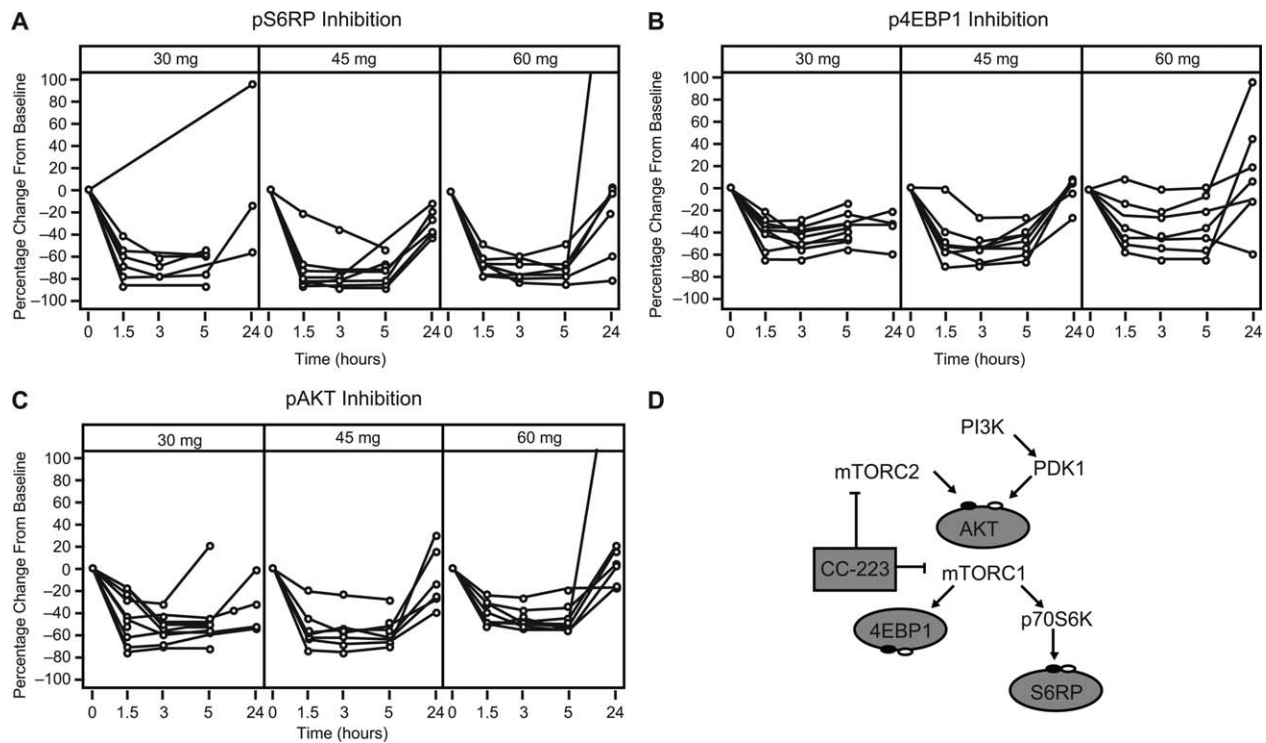
#### Pharmacokinetics

Of 28 enrolled patients, 27 were evaluable for PK. CC-223 was absorbed rapidly, with peak plasma concentration

( $C_{max}$ ) levels achieved 1-3 hours after single and multiple daily doses (Fig. 2). The mean terminal half-life of CC-223 was 4.86-5.64 hours over the 30- to 60-mg CC-223 daily dose range. The mean exposure to CC-223  $C_{max}$  and area under the concentration time curve (AUC) from time 0 to infinity increased in a dose-proportional manner over the 30- to 60-mg dose range following single or multiple doses. The ratio of AUC from 0-24 hours postdose ( $AUC_{0-24}$ ) between day 15 and day 1 was  $\leq 22\%$  (Supporting Table 1), suggesting a small amount of accumulation after multiple dosing. A small fraction of CC-223 (<0.2%) was excreted unchanged in urine, and renal clearance was negligible, suggesting that metabolism may be the primary clearance route.

#### Pharmacodynamics/Biomarker Analyses

Pharmacodynamic effects were assessed through measuring biomarker phosphorylation for mTORC1 (S6RP

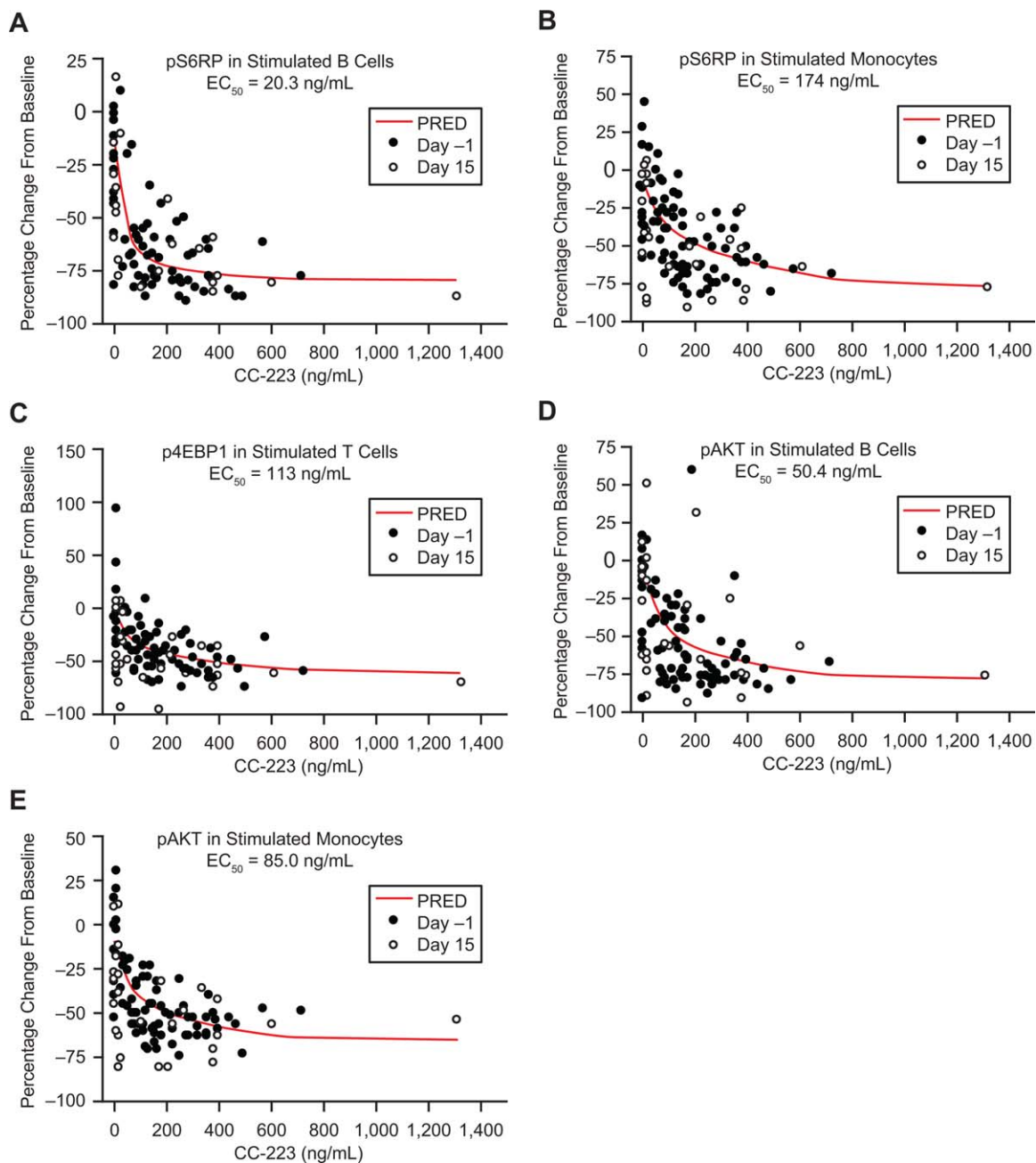


**Figure 3.** Dose-related plasma biomarker inhibition. Following a single dose of CC-223 on day  $-1$ , cycle 1, inhibition (post-dose assessments relative to the baseline value) of (A) pS6RP, (B) p4EBP1, and (C) pAKT in stimulated peripheral blood B cells, T cells, and monocytes, respectively, was observed in all patients following doses ranging from 30 to 60 mg. The phosphorylation of AKT (for mTORC2 activity) and p4EBP1 and pS6RP (mTORC1 activity) in relevant cell types were evaluated using flow cytometry with specific antibodies and expressed as equivalent reference fluorophore, ERF. (D) Model of CC-223 mechanism of action. CC-223 inhibits phosphorylation of 4EBP1, S6RP, and AKT through suppression of both mTORC1 and mTORC2. Abbreviations: 4EBP1, 4E-binding protein 1; AKT, protein kinase B; mTORC1, mammalian target of rapamycin complex 1; mTORC2, mammalian target of rapamycin complex 2; p4EBP1, phosphorylated 4E-binding protein 1; p70S6K, p70 S6 kinase 1; pAKT, phosphorylated protein kinase B; PDK1, 3-phosphoinositide-dependent protein kinase 1; PI3K, phosphoinositide 3-kinase; pS6RP, phosphorylated S6 ribosomal protein; S6RP, S6 ribosomal protein.

and 4EBP1) and mTORC2 (AKT) in peripheral blood samples after single and multiple doses of CC-223. Inhibition of pS6RP, p4EBP1, and pAKT was observed in B cells, T cells, and monocytes under both stimulated and nonstimulated conditions (Supporting Table 2). Biomarker inhibition varied among blood cell types and was achieved for pS6RP ( $>70\%$ ), p4EBP1 ( $>40\%$ ), and pAKT ( $>48\%$ ) at the 30-, 45-, and 60-mg dose levels at 3 hours on treatment (Fig. 3). The highest inhibition occurred in stimulated B cells and nonstimulated monocytes for pS6RP, T cells for p4EBP1, and stimulated B cells and monocytes for pAKT. Inhibition kinetics were similar for the 3 biomarkers. The highest levels of inhibition were found 1.5-3 hours postdose and were sustained for  $\geq 5$  hours. At 24 hours, following first-dose administration, inhibition returned to near-baseline levels in most patients, whereas inhibition persisted at 24 hours following multiple-dose administration in some patients. Robust comparative analyses were limited by small cohort size and interpatient variability.

Pretreatment tumor tissue for gene sequencing was obtained from 4 patients, including 2 with SD  $\geq 110$  days who had genetic abnormalities associated with mTORC1/mTORC2 pathway activation (Phosphatase and tensin homolog (PTEN) deletion and PIK3CA mutation). Quantitative image analysis of immuno-histochemically stained pre- and on-treatment (days 15-22) biopsies from 2 patients (HCC and salivary gland tumor) were evaluated. Significant inhibition of pS6RP, pAKT, and Ki67 staining was detected (Supporting Fig. 2), and an increase in TUNEL-positive cells (data not shown) was seen in both the HCC and salivary gland tumor samples after treatment with CC-223. Additionally, the HCC sample showed inhibition of p4EBP1 after treatment initiation (data not shown). These preliminary PD data are consistent with suppression of both mTORC1 and mTORC2 activity in blood and tumor tissue.

Increases in glucose, insulin, and C-peptide levels were CC-223 dose-dependent in patients receiving doses  $\geq 30$  mg/d (Table 3; Supporting Fig. 3).



**Figure 4.** Pharmacokinetics/pharmacodynamics correlations: (A) pS6RP in stimulated B cells. (B) pS6RP in stimulated monocytes. (C) p4EBP1 in stimulated T cells. (D) pAKT in stimulated B cells. (E) pAKT in stimulated monocytes. Abbreviations:  $EC_{50}$ , half maximal effective concentration; p4EBP1, phosphorylated 4E-binding protein 1; pAKT, phosphorylated protein kinase B; PRED, predicted; pS6RP, phosphorylated S6 ribosomal protein.

### Exposure-Response Analysis and PK/PD Correlation

A direct inhibitory model (maximum observed PK effect) was used to describe the concentration–effect relationship between CC-223 concentrations and changes in PD endpoints (pAKT, p4EBP1, and pS6RP in stimulated B cells, T cells, and monocytes, respectively) relative to baseline.

Under stimulated conditions, the concentration–effect relationships were best characterized for p4EBP1 measured in stimulated T cells, and for pAKT and pS6RP measured in stimulated B cells and monocytes (Fig. 4) because PK/PD modeling resulted in successful minimization of covariance in nonlinear mixed effects modeling.



Half-maximal effective concentration ( $EC_{50}$ ) values for pAKT inhibition in stimulated B cells and monocytes were 50.4 and 85.0 ng/mL, respectively;  $EC_{50}$  values for pS6RP inhibition in stimulated B cells and monocytes were 20.3 and 174 ng/mL, respectively. The  $EC_{50}$  value for p4EBP1 inhibition in stimulated T cells was 113 ng/mL (Fig. 4). The mean steady-state plasma CC-223 at 30 and 45 mg/d was  $\sim 60$  and  $\sim 87$  ng/mL ( $AUC_{0-24}$  divided by 24 hours), respectively, which was greater than or close to the  $EC_{50}$  for pAKT, pS6RP, and p4EBP1 inhibition in stimulated B cells. These results suggest that a single dose of  $\geq 30$  mg CC-223 may provide overall inhibition of these biomarkers during a 24-hour dosing interval.

## DISCUSSION

The PI3K/AKT/mTOR pathway is frequently activated in human cancers, leading to aberrant metabolism, increased proliferation, and resistance to apoptosis in cancer cells.<sup>1</sup> Although considerable evidence confirms the importance of this pathway in human cancers, the clinical activity of rapalog monotherapy is modest, potentially due to insufficient inhibition of AKT and 4EBP1 phosphorylation.<sup>7,8,20,21</sup> In preclinical studies, dual suppression of mTORC1 and mTORC2 can increase antitumor activity versus agents exclusively targeting mTORC1.<sup>13,22</sup> Active-site inhibitors such as CC-223 that target both mTORC1 and mTORC2 through mTOR kinase activity inhibit activation of AKT and 4EBP1 and are promising therapeutic agents.<sup>12,13</sup>

In this phase 1 study, single-agent CC-223 was administered to 28 pretreated patients with AST or MM. The MTD was 45 mg/d, although 11.1% of patients at the MTD required dose reductions and 55.6% required interruptions. CC-223 was associated with a safety profile similar to that of other mTORC1/mTORC2 inhibitors, such as MLN0128/INK128 and AZD8055.<sup>9,23</sup> Common CC-223-related AEs were fatigue, nausea, diarrhea, and hyperglycemia; the most common grade 3 AE was hyperglycemia (18%). Hyperglycemia, hypercholesterolemia, and other metabolic abnormalities are common in patients treated with other mTOR inhibitors, including the rapalogs everolimus and temsirolimus.<sup>24-27</sup> In the present study, dose-dependent glucose and C-peptide level elevations occurred in patients receiving CC-223  $\geq 30$  mg/d. Interestingly, neither hypercholesterolemia nor hypertriglyceridemia was a frequent event in patients treated with CC-223, a finding similar to that observed with other mTORC1/mTORC2 inhibitors.<sup>9,23</sup>

The pharmacokinetics of CC-223 were dose-proportional. Pharmacodynamic analyses showed a

relationship between CC-223 exposure and pAKT, p4EBP1, and pS6RP reduction in stimulated B cells, T cells, and monocytes, respectively, thus differentiating CC-223 from rapalogs that typically cause pAKT activation and minimal p4EBP1 inhibition.<sup>22,28</sup> Substantial pS6RP ( $>70\%$ ), p4EBP1 ( $>40\%$ ), and pAKT ( $>50\%$ ) inhibition was observed at  $\geq 30$  mg CC-223, although pS6RP and pAKT inhibition was more complete than p4EBP1 inhibition. Additionally, preliminary evidence of inhibition of pS6RP, p4EBP1, pAKT, and proliferation marker Ki-67 was observed in paired tumor biopsies in 2 patients.

Our dose-escalation study demonstrated early evidence of clinical activity through durable tumor control with one PR (3.6%) lasting 220 days in 1 patient with breast cancer and 8 patients (29%) with SD ( $>100$  days in 5 patients), including 2 patients with tumors exhibiting molecular abnormalities associated with mTORC1/mTORC2 pathway activation. In a phase 1 study of AZD8055 (mTORC1/mTORC2 inhibitor), the best response was SD in 7 patients (14.3%).<sup>9</sup> In a phase 1 study of MLN0128, 1 patient (4%) with MM had a response lasting  $\sim 2$  months and 15 patients (56%) had SD.<sup>10</sup>

Given the evidence of mTORC1/mTORC2 pathway inhibition, acceptable safety profile, dose-proportional PK, exposure-related PD effects, and encouraging antitumor activity, cohorts of patients with MM, diffuse large B-cell lymphoma, and selected solid tumors are currently being evaluated in the expansion phase of this study. During this expansion phase, fludeoxyglucose-positron emission tomography imaging will be explored as a potential visual biomarker of PD activity, and tumor biopsies will be obtained to evaluate molecular parameters associated with CC-223 treatment.

## FUNDING SUPPORT

Funding for this clinical trial was provided by Celgene. The authors received medical writing assistance from Stephanie K. Doerner, PhD, of ProEd Communications, Inc., funded by Celgene Corporation.

## CONFLICT OF INTEREST DISCLOSURES

Dr. Kelly received research funding for conducting (as Principal Investigator) a Celgene-sponsored clinical trial of a different agent, CC-122. Sarah Cannon Research Institute has received expenses from Celgene on behalf of Dr. Infante. Drs. Xu, Wong, Liu, Wu, Mortensen, Chopra, and Hege are employees of Celgene. Dr. Liu is a regular employee of Celgene Corporation and receives payment from the company for characterizing the pharmacokinetics of an investigated drug including CC-223 in the current study. Drs. Wu, Chopra, and Hege are employed by and own stock in Celgene.

## REFERENCES

- Massaccesi C, di Tomaso E, Fretault N, Hirawat S. Challenges in the clinical development of PI3K inhibitors. *Ann N Y Acad Sci.* 2013; 1280:19-23.
- Vander Heiden MG, Cantley LC, Thompson CB. Understanding the Warburg effect: the metabolic requirements of cell proliferation. *Science.* 2009;324:1029-1033.
- Demetri GD, Chawla SP, Ray-Coquard I, et al. Results of an international randomized phase III trial of the mammalian target of rapamycin inhibitor ridaforolimus versus placebo to control metastatic sarcomas in patients after benefit from prior chemotherapy. *J Clin Oncol.* 2013;31:2485-2492.
- Hudes G, Carducci M, Tomczak P, et al. Temsirolimus, interferon alfa, or both for advanced renal-cell carcinoma. *N Engl J Med.* 2007; 356:2271-2281.
- Motzer RJ, Escudier B, Oudard S, et al. Efficacy of everolimus in advanced renal cell carcinoma: a double-blind, randomised, placebo-controlled phase III trial. *Lancet.* 2008;372:449-456.
- Markman B, Dienstmann R, Taberero J. Targeting the PI3K/Akt/mTOR pathway—beyond rapalogs. *Oncotarget.* 2010;1:530-543.
- Ducker GS, Atreya CE, Simko JP, et al. Incomplete inhibition of phosphorylation of 4E-BP1 as a mechanism of primary resistance to ATP-competitive mTOR inhibitors. *Oncogene.* 2014;33:1590-1600.
- Dowling RJ, Topisirovic I, Alain T, et al. mTORC1-mediated cell proliferation, but not cell growth, controlled by the 4E-BPs. *Science.* 2010;328:1172-1176.
- Naing A, Aghajanian C, Raymond E, et al. Safety, tolerability, pharmacokinetics and pharmacodynamics of AZD8055 in advanced solid tumours and lymphoma. *Br J Cancer.* 2012;107:1093-1099.
- Ghobrial IM, Siegel D, Vij R, et al. MLN0128 (INK128), an investigational oral dual TORC1/2 inhibitor, in patients (pts) with relapsed or refractory multiple myeloma (MM), non-Hodgkin's lymphoma (NHL), or Waldenstrom macroglobulinemia (WM): preliminary results from a phase I dose escalation study. *Blood.* 2012; 120(suppl). Abstract 4038.
- Goy A, Ribrag V, Varga A, et al. Phase I expansion trial of an oral TORC1/TORC2 inhibitor (CC-223) in diffuse large B-cell lymphoma (DLBCL) and multiple myeloma (MM). Presented at: 49th Annual Meeting of the American Society of Clinical Oncology (ASCO); May 31-June 4, 2013; Chicago, IL. Abstract 8522.
- Mortensen DS, Fultz KE, Hickman M, et al. The discovery and pre-clinical characterization of CC-223, a novel mTOR kinase inhibitor under clinical investigation. *Eur J Cancer.* 2012;48(suppl 6):103. Abstract 337.
- Xu S, Tran T, Tsuji T, et al. CC-223, a selective mTOR kinase inhibitor, potently inhibits proliferation of a large panel of cancer cell lines in vitro. *Eur J Cancer.* 2012;48(suppl 6):103. Abstract 338.
- Simon R, Freidlin B, Rubinstein L, Arbuck SG, Collins J, Christian MC. Accelerated titration designs for phase I clinical trials in oncology. *J Natl Cancer Inst.* 1997;89:1138-1147.
- US Department of Health and Human Services, National Institutes of Health, National Cancer Institute. Common Terminology Criteria for Adverse Events, version 4.0. 2009. <http://evs.nci.nih.gov/ftp1/CTCAE/About.html>. Accessed September 4, 2014.
- Eisenhauer EA, Therasse P, Bogaerts J, et al. New response evaluation criteria in solid tumours: revised RECIST guideline (version 1.1). *Eur J Cancer.* 2009;45:228-247.
- Durie BG, Harousseau JL, Miguel JS, et al. International uniform response criteria for multiple myeloma. *Leukemia.* 2006;20:1467-1473.
- Wen PY, Macdonald DR, Reardon DA, et al. Updated response assessment criteria for high-grade gliomas: response assessment in neuro-oncology working group. *J Clin Oncol.* 2010;28:1963-1972.
- Cloughesy TF, Yoshimoto K, Nghiemphu P, et al. Antitumor activity of rapamycin in a phase I trial for patients with recurrent PTEN-deficient glioblastoma. *PLoS Med.* 2008;5:e8.
- O'Reilly KE, Rojo F, She Q-B, et al. mTOR inhibition induces upstream receptor tyrosine kinase signaling and activates Akt. *Cancer Res.* 2006;66:1500-1508.
- Sun S-Y, Rosenberg LM, Wang X, et al. Activation of Akt and eIF4E survival pathways by rapamycin-mediated mammalian target of rapamycin inhibition. *Cancer Res.* 2005;65:7052-7058.
- Thoreen CC, Kang SA, Chang JW, et al. An ATP-competitive mammalian target of rapamycin inhibitor reveals rapamycin-resistant functions of mTORC1. *J Biol Chem.* 2009;284:8023-8032.
- Infante JR, Taberero J, Cervantes A, et al. A phase 1, dose-escalation study of MLN0128, an investigational oral mammalian target of rapamycin complex 1/2 (mTORC1/2) catalytic inhibitor, in patients (pts) with advanced non-hematologic malignancies. *Mol Cancer Ther.* 2013;12(11 suppl). Abstract C252.
- Wolpin BM, Hezel AF, Abrams T, et al. Oral mTOR inhibitor everolimus in patients with gemcitabine-refractory metastatic pancreatic cancer. *J Clin Oncol.* 2009;27:193-198.
- Bitting RL, Healy P, Creel PA, et al. A phase Ib study of combined VEGFR and mTOR inhibition with vatalanib and everolimus in patients with advanced renal cell carcinoma. *Clin Genitourin Cancer.* 2014;112:241-250.
- Rini BI, Bellmunt J, Clancy J, et al. Randomized phase III trial of temsirolimus and bevacizumab versus interferon alfa and bevacizumab in metastatic renal cell carcinoma: INTORACT Trial. *J Clin Oncol.* 2014;32:752-759.
- Rugo HS, Pritchard KI, Gnani M, et al. Incidence and time course of everolimus-related adverse events in postmenopausal women with hormone receptor-positive advanced breast cancer: insights from BOLERO-2. *Ann Oncol.* 2014;25:808-815.
- Gibbons JJ, Abraham RT, Yu K. Mammalian target of rapamycin: discovery of rapamycin reveals a signaling pathway important for normal and cancer cell growth. *Semin Oncol.* 2009;36: S3-S17.