

RESEARCH ARTICLE

# Hydrogen Sulfide Delays LPS-Induced Preterm Birth in Mice via Anti-Inflammatory Pathways

Weina Liu<sup>1#a</sup>, Chen Xu<sup>1#b</sup>, Xingji You<sup>1</sup>, David M. Olson<sup>2</sup>, Sylvain Chemtob<sup>3</sup>, Lu Gao<sup>1\*</sup>, Xin Ni<sup>1\*</sup>

**1** Department of Physiology, Second Military Medical University, Shanghai, China, **2** Departments of Obstetrics and Gynecology, Pediatrics and Physiology, University of Alberta, Edmonton, Canada, **3** Departments of Pediatrics, Ophthalmology and Pharmacology, CHU Sainte-Justine Research Centre, Montréal, Canada

<sup>#a</sup> Current address: The 413rd hospital of Chinese People's Liberation Army, Zhoushan, Zhejiang, China  
<sup>#b</sup> Current address: Department of Physiology and Pathophysiology, Fudan University Shanghai Medical College, Shanghai, China

\* [lu.gao@smmu.edu.cn](mailto:lu.gao@smmu.edu.cn) (LG); [nixin@smmu.edu.cn](mailto:nixin@smmu.edu.cn) (XN)



OPEN ACCESS

**Citation:** Liu W, Xu C, You X, Olson DM, Chemtob S, Gao L, et al. (2016) Hydrogen Sulfide Delays LPS-Induced Preterm Birth in Mice via Anti-Inflammatory Pathways. PLoS ONE 11(4): e0152838. doi:10.1371/journal.pone.0152838

**Editor:** Yi Zhun Zhu, Fudan University School of Pharmacy, CHINA

**Received:** January 22, 2016

**Accepted:** February 27, 2016

**Published:** April 1, 2016

**Copyright:** © 2016 Liu et al. This is an open access article distributed under the terms of the [Creative Commons Attribution License](https://creativecommons.org/licenses/by/4.0/), which permits unrestricted use, distribution, and reproduction in any medium, provided the original author and source are credited.

**Data Availability Statement:** All relevant data are within the paper and its Supporting Information files.

**Funding:** This work was supported by National Natural Science Foundation of China No. 81170596 & 81270756 (to LG), No. 81370734 (to XN), and 81471479 (to XY); Science and Technology Commission of Shanghai Municipals No. 15PJ1410400 (to LG) and No. 13430722900 (to XN); and Global Alliance for the Prevention of Prematurity and Stillbirth (GAPPS): Preventing Preterm Birth Initiative (to DMO, SC & XN).

## Abstract

A major cause of preterm labor in pregnant women is intra-amniotic infection, which is mediated by an inflammatory process. Hydrogen sulfide (H<sub>2</sub>S), a gaseous transmitter, has been implicated to be involved in inflammatory responses. We sought to investigate whether H<sub>2</sub>S affects infectious preterm birth using the mouse model of lipopolysaccharides (LPS)-induced preterm birth. Administration of LPS at 0.4 mg/kg with two injections intraperitoneally (i.p.) on gestational day 14.5 induced preterm labor. LPS significantly increased leukocyte infiltration in uterus, stimulated the expression of pro-inflammatory cytokines interleukin 1β (IL-1β), IL-6, tumor necrosis factor α (TNF-α), CCL2 and CXCL15 in myometrium. Administration of NaHS (i.p.) delayed the onset of labor induced by LPS in a dose-dependent manner. NaHS prevented leukocyte infiltration into intrauterine tissues and inhibited the production of pro-inflammatory cytokines in myometrium and decreased the levels of these cytokines in maternal circulation. H<sub>2</sub>S also decreased LPS-activated extracellular signal-regulated kinase (ERK) 1/2/ nuclear factor (NF)-κB signaling pathways in myometrium. This study provides new *in vivo* evidence for the roles of H<sub>2</sub>S in attenuating inflammation, and a potential novel therapeutic strategy for infection-related preterm labor.

## Introduction

Preterm birth (PTB) occurs in 5–15% of all pregnancies worldwide, and is the leading cause of infant morbidity and mortality [1, 2]. Of the survivors of PTB, 25% will have at least one developmental delay such as cerebral palsy and long term vision, hearing and respiratory problems [3]. Approximately half of PTB is of unknown aetiology, while maternal genito-urinary infections account for up to 30% to 40% of all PTB [4]. It has been demonstrated that uterine

**Competing Interests:** The authors have declared that no competing interests exist.

infection initiates a cascade of events such as induction of inflammatory responses, premature rupture of fetal membranes and myometrial contractions, all leading to preterm delivery of fetus [4].

There is increasing body of evidence indicating that the inflammatory state within uterus is a common element of both infection and idiopathic PTB [5, 6]. The expression of pro-inflammatory cytokines (including chemokines) in uterine tissues is increased prior to onset of term and preterm labor, and infiltration of myometrium, cervix, and fetal membranes by neutrophils and macrophages (M $\phi$ ) [7–9] is found in both term and preterm labor. Many studies have demonstrated that inflammatory mediators such as IL-1 $\beta$ , IL-6 and TNF- $\alpha$  can stimulate the expression of contraction-associated proteins (CAPs), such as oxytocin receptor (OTR), connexin 43(CX43), prostaglandin H synthase (PGHS)-2 and prostaglandin receptors, in myometrium and production of uterotonic factors such as PGs, eventually leading to onset of labor. Thus, it has been implicated that these inflammatory pathways represent targets for the development of novel therapeutic agents to prevent PTB.

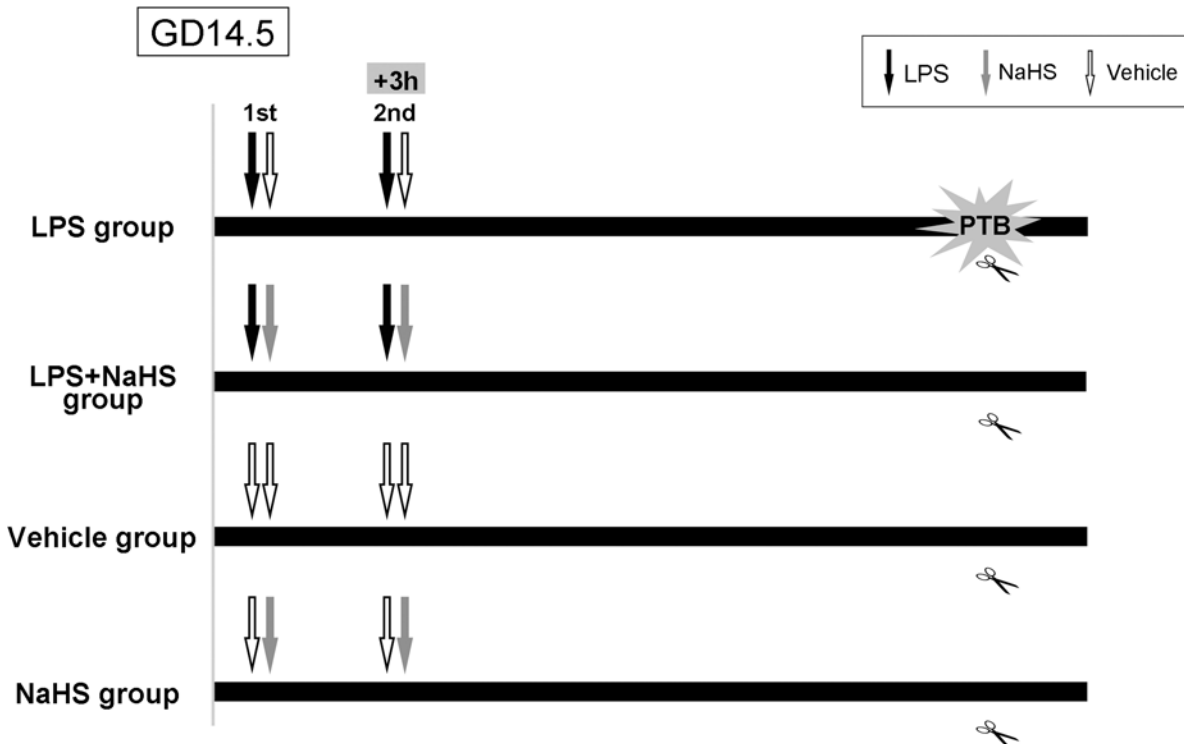
Hydrogen sulfide (H<sub>2</sub>S) has recently been suggested to be “the third endogenous gaseous signaling transmitter” in addition to nitric oxide (NO) and carbon monoxide (CO) in mammalian tissues. H<sub>2</sub>S has been implicated in many physiologic and pathologic processes, in particular, the inflammatory responses. There are many studies demonstrating that H<sub>2</sub>S exerts the anti-inflammatory actions in various tissues [10–12]. However, controversies emerge from many studies, indicating that H<sub>2</sub>S may play dual roles in the inflammatory process. For instance, H<sub>2</sub>S in synovial fluid appears to act as a pro-inflammatory mediator in rheumatic diseases [13]. In the U937 human monocyte cell line, NaHS causes enhanced TNF- $\alpha$  and IL-1 $\beta$  output via activation of extracellular signal-regulated kinase 1/2 (ERK1/2)/nuclear factor- $\kappa$ B (NF- $\kappa$ B) signaling pathway [14]. It has been suggested that the concentration/production rate of H<sub>2</sub>S, physiological/pathological condition and cell/tissue type contribute to divergent effects of H<sub>2</sub>S on the inflammatory responses [15–18].

A number of studies have demonstrated that gestational tissues, including placenta, fetal membranes and myometrium, express H<sub>2</sub>S generating enzymes cystathionine- $\beta$ -synthase (CBS) and cystathionine- $\gamma$ -lyase (CSE) [19–21]. Our previous study has shown that H<sub>2</sub>S suppresses contractions in human myometrial strips *in vitro* [22], suggesting that H<sub>2</sub>S might be involved in labor process. More recently, it has been implicated that gasotransmitters might be a solution for the therapeutic dilemma for pregnancy diseases such as preeclampsia [23]. Thus, it would be of interest to explore the effect of H<sub>2</sub>S on PTB. As mentioned, inflammatory processes play significant roles in most, if not all, labors regardless of the presence of infection, and H<sub>2</sub>S is involved in regulation of inflammation in various tissues. We investigated whether H<sub>2</sub>S affects the timing of birth in a LPS-induced preterm labor mouse model and examined inflammatory profile in gestational tissues of the mice.

## Materials and Methods

### Animals

Mice of the BALB/c strain (20–25 g body weight, 6–8 weeks old) were obtained from Shanghai SLAC Laboratory Animal Co (Shanghai, China). They were housed in groups in the cages under controlled conditions of light (12 h light, 12h dark) and temperature (23–25°C). Animals received pellet chow and water ad libitum. All animal experiments were approved by the Ethical Committee of Experimental Animals of Second Military Medical University, and in accordance with the National Institutes of Health Guide for the Care and Use of Laboratory Animals. The animals were observed at least once daily before they were mated. The criteria we used to monitor animal health include the condition of coat and skin, the appearance of the



**Fig 1. Diagram for the animal model procedure.** Timed-pregnant mice at 14.5 dpc were injected intraperitoneally (i.p.) with LPS with or without NaHS at different doses in 100µl NS twice a day at 8:30 and 11:30. Labor time was considered as the first pup was delivered. GD: gestational day. Black arrow: LPS i.p. Grey arrow: NaHS i.p. White arrow: NS i.p.

doi:10.1371/journal.pone.0152838.g001

eyes, the gait pattern, self-biting, self-clasping, self-grasping, hair pulling-and eating, face or eye poking et al.

Female mice were housed with male mice overnight beginning at 18:00. Mice found to have vaginal plugs at 6:00 the following day were considered to be 0.5 day post-coitum (dpc). Timed-pregnant mice at 14.5 dpc were injected i.p. with *Escherichia coli* 0111:B4 lipopolysaccharides (LPS, Sigma-Aldrich, St. Louis) at 0.2, 0.4 or 0.8mg/kg in 100µl sterile normal saline (NS) with or without sodium bisulfide (NaHS, Sigma-Aldrich) at 5, 7.5, 10, 15mg/kg in 100µl NS twice a day at 8:30 and 11:30 (Fig 1). Control pregnant mice at 14.5 dpc received 100µl NS with or without NaHS at 10mg/kg twice a day at 8:30 and 11:30. They were monitored every 2 hours after first LPS-injection to see if they were in labor. Besides signs mentioned above, the size of belly, the blood or remnant of placenta and neonatal mice were also monitored for pregnant mice. No animals from the control group became severely ill or died prior to the experimental endpoint. However, two from six animals injected with 15mg/kg NaHS were euthanized via cervical dislocation, due to apparent vaginal bleeding and threatened abortion prior to active labor.

Myometrium, placenta and blood samples from the mice receiving LPS injection were collected at 1h, 2h, 4h, 5h post-injection and the time when LPS-treatment group delivered first pup (~8h after LPS injection) within 5 min under anesthesia with 10% chloral hydrate (5µl/g, i.p.). In this case, no side effect of anesthesia to fetus and mother was observed. Samples of control pregnant mice were collected at 8h post-injection. Myometrium was isolated after removal of all fetal-derived tissues, and the endometrial layer was also removed by gently scraping and blotting. The myometrium and placenta were then rinsed in ice-cold 1× PBS, flash frozen in liquid nitrogen and stored at -80°C along with the maternal serum until analysis.

## Enzyme-linked Immunosorbent Assay (ELISA)

The concentrations of IL-1 $\beta$ , IL-6, TNF- $\alpha$ , CCL2 and CXCL15 in mouse uterine tissue and maternal serum were determined by specific enzyme-linked immunoassay kit (Westang Biotech Co Ltd, Shanghai, China), according to the manufacturer's instructions.

## Immunohistochemistry

Mouse placenta and surrounding uterus were fixed in 4% paraformaldehyde solution and embedded in paraffin. Paraffin sections (5  $\mu$ m) were cut, rehydrated and microwaved in citric acid buffer to retrieve antigens. Then, the sections were treated with 3% hydrogen peroxide (H<sub>2</sub>O<sub>2</sub>), followed by 10% normal goat serum blocking at room temperature for 30 min, then incubated with CD45 antibody (Santa-Cruz, Dallas, TX; 1:200) diluted in PBS containing 1% BSA for 24h at 4°C. The sections were incubated with mouse anti rabbit IgG for 30min at room temperature after washing with PBS (3min $\times$ 3 times). The signals were detected with the biotin-streptavidin-peroxidase system using diaminobenzidine (Sigma-Aldrich) as chromogen. Negative controls were performed with primary antibody replaced by PBS.

## Quantitative real-time RT-PCR

Total RNA of myometrial tissues was extracted by TRIzol reagent (Invitrogen Corp., Carlsbad, CA) following the manufacturer's instructions. The RNA samples were treated with DNase (Invitrogen) to remove any contaminating DNA. 2  $\mu$ g RNA was reversed transcribed using random primers and Moloney Murine Leukemia Virus Reverse Transcriptase (MMLV, Promega, Madison, USA). All PCR primers were synthesized by Sangon Biotech (Shanghai, China) and the sequences of the primers were shown in [S1 Table](#). Quantitative real-time PCR analysis was carried out in duplicates using CFX Connect Real-Time PCR Detection System (Bio-Rad, Singapore). Real-time PCR solution consisted of 40 ng diluted cDNA product, 0.1–0.3  $\mu$ M of each paired primer and SYBR Green PCR Master Mix (Aidlab, Shanghai, China). PCR conditions were optimized according to preliminary experiments to achieve linear relationships between initial RNA concentration and PCR product. The specificity of the primers was verified by examining the melting curve and efficiency was validated by standard curve. The amplification cycles were set at 40 cycles. Amplification of the housekeeping genes  $\beta$ -actin and GAPDH were measured for each sample as an internal control for sample loading and normalization. To determine the relative quantitation of gene expression for both target and housekeeping genes, the comparative Ct (threshold cycle) method with arithmetic formulae ( $2^{-\Delta\Delta C_t}$ ) was used [24]. Because very similar data were obtained by using either  $\beta$ -actin or GAPDH as an internal control, GAPDH was used for calculation of  $\Delta C_t$  in presentation of results.

## Western Blotting

Approximately 50mg of myometrial tissues were homogenized in cold RIPA lysis buffer containing protease/phosphatase inhibitor cocktail (Roche, Mannheim, Germany) and PMSF. Tissue homogenates were sonicated in an ice bath and then boiled at 100°C for 5 min. Protein samples (30 $\mu$ g) were separated by 10% SDS-PAGE gel electrophoresis and subsequently transferred to nitrocellulose membranes. After blockage in 5% skim milk, membranes were incubated with specific primary antibodies including phospho-p65 (CST, Boston, MA), p65 (CST), phospho-ERK1/2 (CST) and ERK1/2 (CST) under constant shaking overnight at 4°C. The membranes were then incubated with a secondary horseradish peroxidase-conjugated antibody for 1 h at room temperature. Immunoreactive proteins were visualized using the Enhanced

Chemiluminescence Western blotting detection system (Millipore, Billerica, USA). The chemiluminescent signals from the membranes were quantified by a Gene Gnome HR scanner (Synoptics Ltd, UK). The levels of phospho-p65 and phospho-ERK1/2 were normalized to the unphosphorylated form of these proteins, while the levels of unphosphorylated form of ERK1/2 and p65 were normalized to β-actin.

### Statistics

All the results are presented as mean±SEM. All the data were tested for homogeneity of variance by Bartlett’s test before analyzing the significance. Data were then analyzed by one-way ANOVA followed by Student-Newman-Keuls (SNK) multiple comparison method. In all of the tests, *P* < 0.05 was considered to be significant.

## Results

### H<sub>2</sub>S delays onset of LPS-induced preterm labor

The animals received two injections of NS delivered by 124.38±6.76 hrs after the first injection (Table 1), which is comparable to the normal delivery time of mice. LPS administration dose-dependently reduced the time to delivery, with mice treated with both 0.4mg/kg and 0.8mg/kg delivering significantly earlier compared with the NS control group (0.4mg/kg LPS mean time to delivery: 7.67±0.89 h, *p*<0.001 compared with NS control group; 0.8mg/kg LPS mean time to delivery: 6.75±0.67 h, *p*<0.001 compared with NS control group; Table 1). Subsequent experiments were performed with 0.4mg/kg LPS, as this dose resulted in reliable preterm delivery with the least variation in time to delivery between mice and the minimal maternal and fetal mortality.

Various doses of NaHS (5mg/kg-15mg/kg) were then simultaneously injected with LPS at 2 time points, and the delivery time was monitored. Notably, administration of NaHS (10 mg/kg, i.p.) alone at 14.5 dpc with two injections did not change the timing of spontaneous labor in pregnant mice (S2 Table). As shown in Table 2, administration of NaHS at the dosage of 5mg/kg/injection with LPS did not affect the timing of birth and the incidence of PTB, with the ‘injection-to-delivery interval’ of 7.58±0.53 hrs. Administration of NaHS at the dosage of 7.5mg/kg/each injection did not influence the incidence of LPS-induced PTB, but delayed the onset of LPS-induced preterm labor from 7.58±0.53 hrs to 9.21±1.26 hrs (*P* = 0.030). NaHS at the dosage of 10 mg/kg/injection significantly delayed the onset of preterm labor from 7.58 ±0.53 hrs to 16.75±5.95 hrs (*P*<0.001). NaHS at the dosage of 15 mg/kg/injection could increase the maternal mortality (from 0 to 33.3%), so NaHS was used at 10 mg/kg in the subsequent experiments

**Table 1. Injection of LPS induced preterm labor of mice.**

Treatment	N	Injection-to-delivery Interval (hours)
Normal Saline	12	124.38±6.76
LPS 0.2mg/kg	12	95.67±49.21
LPS 0.4mg/kg	12	7.66±0.89 <sup>a</sup>
LPS 0.8mg/kg	12	6.75±0.67 <sup>b</sup>

a: *p* = 2.01×10<sup>-6</sup> compared with NS group

b: *p* = 1.9×10<sup>-6</sup> compared with NS group

doi:10.1371/journal.pone.0152838.t001

**Table 2. NaHS delayed the onset of LPS-induced preterm labor.**

Treatment(mg/kg)	N	Injection-to-delivery Interval (hours)
LPS 0.4 + NS	12	7.67±0.89
LPS 0.4 + NaHS 5	12	7.58±0.53 <sup>a</sup>
LPS 0.4 + NaHS 7.5	12	9.21±1.26 <sup>b</sup>
LPS 0.4 + NaHS 10	12	16.75±5.95 <sup>c</sup>
LPS 0.4 + NaHS 15	6	7.88±0.41 <sup>d, &amp;</sup>

a: p = 0.749 compared with LPS + NS group

b: p = 0.030 compared with LPS + NS group

c: p = 0.000 compared with LPS + NS group

d: p = 0.681 compared with LPS + NS group

&: After injection, two pregnant mice died before active labor.

doi:10.1371/journal.pone.0152838.t002

### H<sub>2</sub>S attenuates LPS-induced leukocyte infiltration in decidua

As shown in Fig 2, LPS dramatically enhanced the leukocyte infiltration in decidua, evident by the increased density of CD45+ cells compared to the mice received NS injection. Administration of NaHS (10mg/kg/each injection) significantly reversed LPS-induced leukocyte infiltration in decidua.

### H<sub>2</sub>S decreases maternal circulatory level of cytokines and chemokines in LPS-treated mice

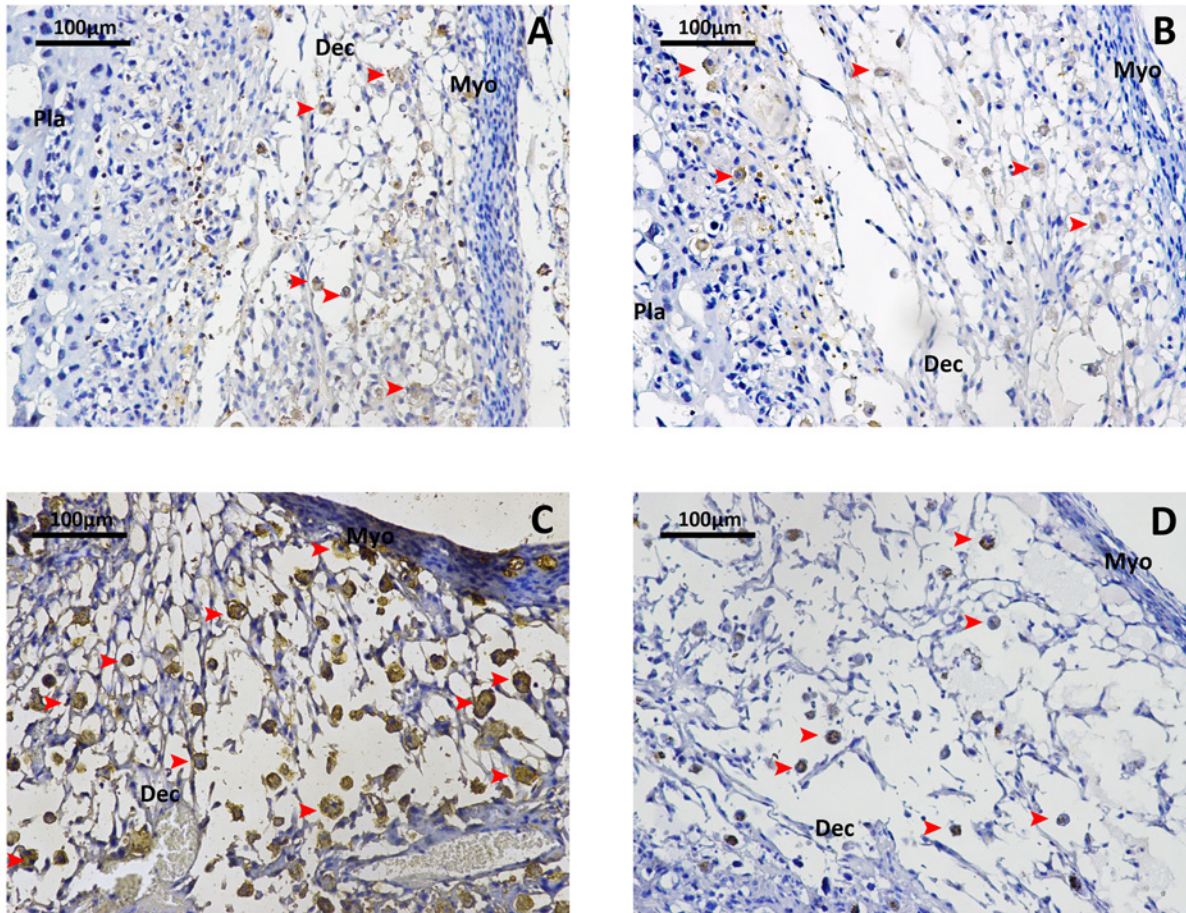
As shown in Fig 3, LPS treatment dramatically increased the level of IL-6, CCL-2 and CXCL-15 (mouse homologue of IL-8) in maternal circulation at the time of onset of labor. Administration of NaHS (10mg/kg/injection) could significantly decrease maternal levels of IL-6, TNF- $\alpha$ , CCL-2 and CXCL-15 in mice received LPS treatment. In addition, administration of NaHS (10mg/kg/injection) also decreased maternal levels of IL-1 $\beta$  and TNF- $\alpha$  in control mice.

### H<sub>2</sub>S decreases mRNA expression of cytokines and chemokines in myometrium and placenta of LPS-treated mice

Moreover, LPS treatment dramatically increased the mRNA levels of IL-1 $\beta$ , IL-6, TNF- $\alpha$ , CCL-2 and CXCL-15 in myometrium, which can be partially reversed by the injections of NaHS (10mg/kg, twice) (Fig 4). In placenta, LPS induced much milder yet significant increases in mRNA levels of IL-1 $\beta$ , IL-6, TNF- $\alpha$ , CCL-2 and CXCL-15, which also can be reversed by NaHS injection (Fig 5).

### H<sub>2</sub>S attenuates LPS-induced activation of ERK1/2 and NF- $\kappa$ B signaling pathway in myometrium

It is known that LPS activates various signaling pathways, such as ERK1/2 and NF- $\kappa$ B [25]. We therefore examined dynamic changes of these signaling pathways at 1h, 2h, 4h, and 5h after the first injection of LPS. As shown in Fig 6A, phosphorylated p65 was dramatically increased by LPS at 1h, remained elevated until 4h after LPS injection, and then returned to basal levels at 5h. Phosphorylated ERK1/2 was increased by LPS at 2 h and remained elevated until 5h after injection (Fig 6B). NaHS (10mg/kg/injection) significantly reversed LPS activation of p65 and ERK1/2 at all the time points observed (Fig 6A & 6B, blue lines).



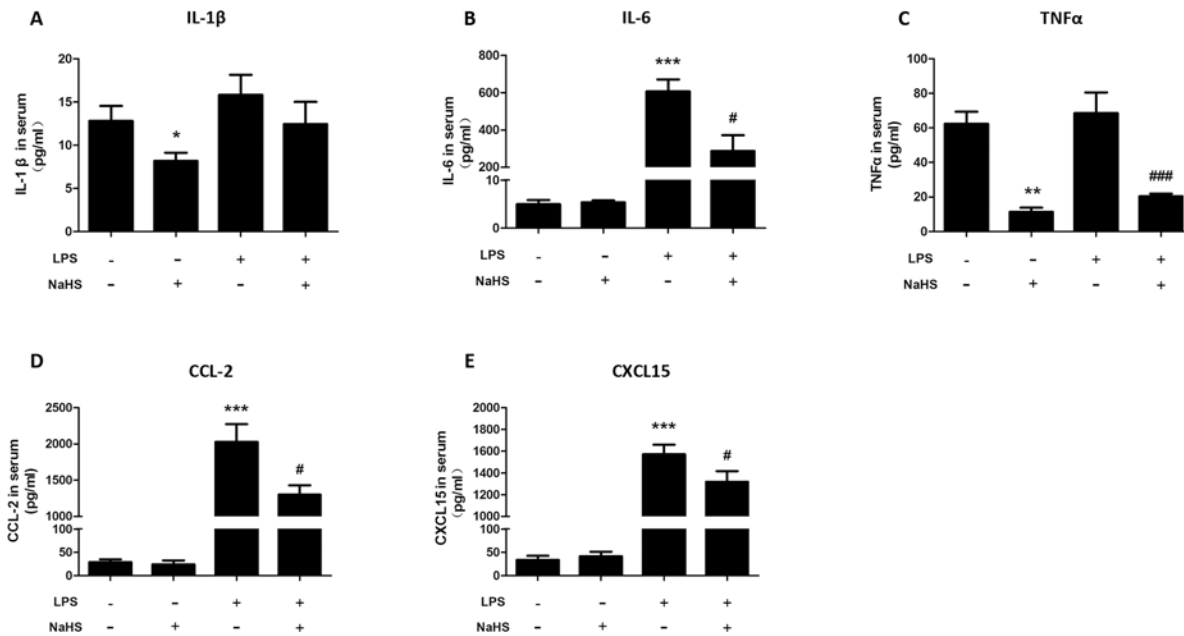
**Fig 2. NaHS reverses the LPS-induced leukocytes infiltration into decidua.** Total density of leukocytes in mice maternal-fetus unit was determined by immunostaining for CD45 (common leukocyte antigen). A. Mice injected with vehicle at 14.5 dpc. B. Mice injected with NaHS(10mg/kg) at 14.5 dpc. C. Mice injected with LPS (0.4mg/kg) at 14.5 dpc. D. Mice injected with LPS (0.4mg/kg) and NaHS (10mg/kg) at 14.5 dpc. Arrow heads indicate positively stained leukocytes. Dec, decidua; Pla, placenta; Myo, myometrium.

doi:10.1371/journal.pone.0152838.g002

## Discussion

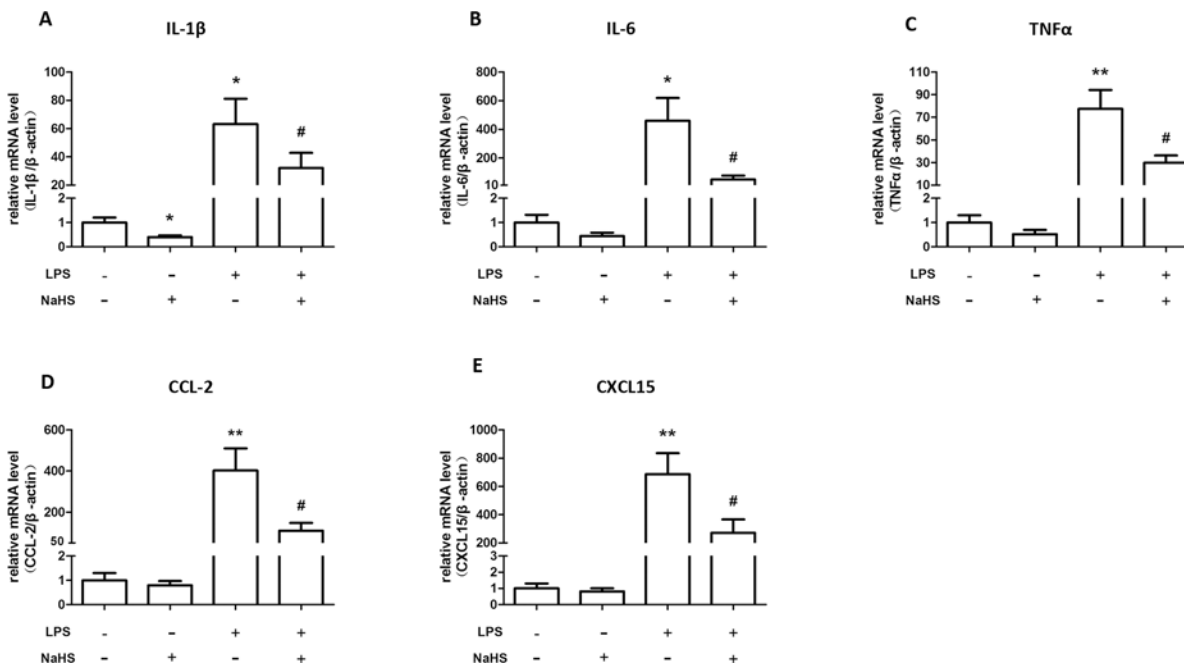
In the present study, we demonstrated that H<sub>2</sub>S significantly delayed LPS-induced preterm labor and suppressed LPS-induced inflammation in myometrium. These data indicate that H<sub>2</sub>S is a potential therapeutic agent for infectious preterm labor.

Many studies have demonstrated that systemic administration of LPS induces preterm birth in rodents [26, 27]. Shynlova et al [27] recently shown that LPS (i.p.) administration on 14.5 dpc could significantly increase mRNA levels of pro-inflammatory cytokines in uterus and induce leukocyte infiltration in uterus in pregnant mice. In consistent with the above studies, we also demonstrated that administration of LPS on 14.5 dpc could induce preterm labor, leukocyte infiltration, mRNA expression of pro-inflammatory cytokines including IL-1 $\beta$ , IL-6, TNF- $\alpha$ , CCL-2 and CXCL-15 in myometrium and increased IL-6, CCL2 and CXCL-15 protein levels in maternal circulation. It is known that LPS binds to toll-like receptor 4 (TLR4) and subsequently activates multiple signaling pathways such as NF- $\kappa$ B and ERK 1/2 [25]. Consistently, we found that LPS treatment increased the levels of phosphorylated p65 and ERK1/2 in myometrium.



**Fig 3. NaHS decreases maternal circulatory levels of cytokines and chemokines in LPS-induced preterm labor mice.** The blood was harvested when the LPS-injected mice delivered the first pup. Serum was collected after centrifuge. ELISA was employed to determine the concentration of IL-1 $\beta$  (A), IL-6 (B), TNF- $\alpha$  (C), CCL-2 (D) and CXCL-15 (E). Data are presented as mean  $\pm$  SEM. N = 6 (vehicle and NaHS groups) or 10 (LPS and LPS+NaHS groups). \* $P$ <0.05, \*\* $P$ <0.01, \*\*\* $P$ <0.001 compared with vehicle control group, # $P$ <0.05, ### $P$ <0.001 compared with LPS-injected group.

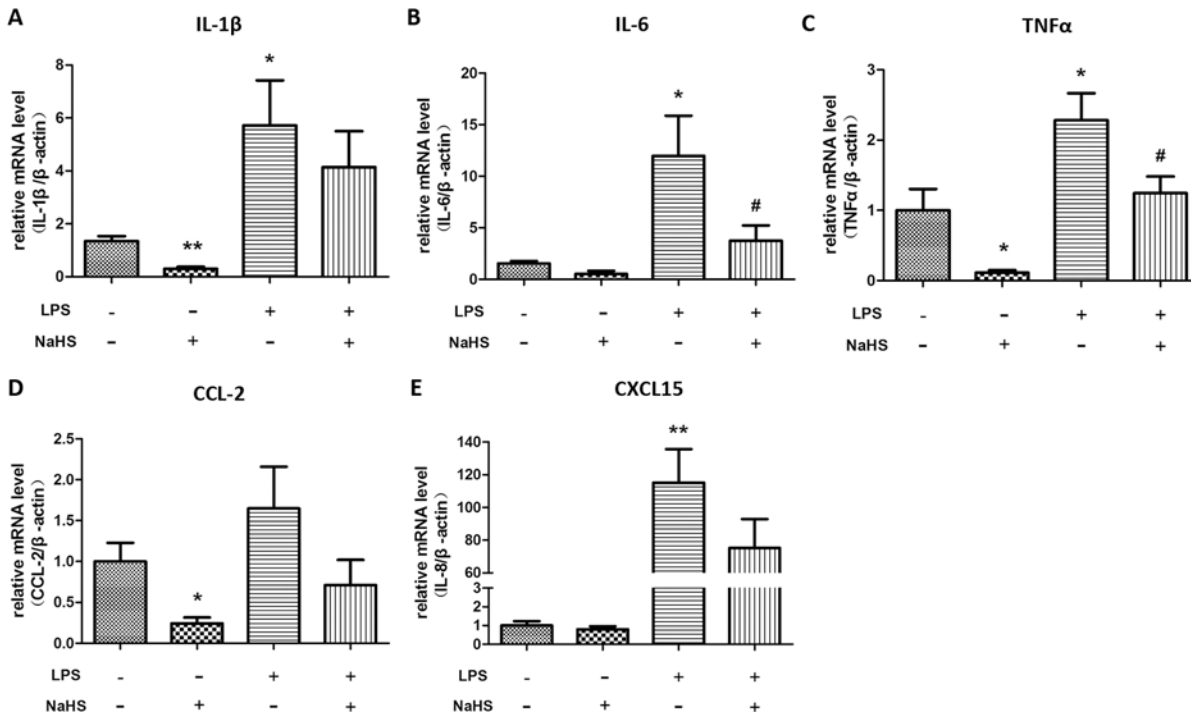
doi:10.1371/journal.pone.0152838.g003



**Fig 4. The effect of NaHS on the mRNA expression of cytokines and chemokines in myometrium of the normal pregnant and LPS-induced preterm labor mice.** Mice accepted two i.p. injections of NS or LPS (0.4mg/kg) with or without NaHS (10mg/kg) at 14.5 dpc. The myometrium was harvested when the LPS-injected mice delivered the first pups. The mRNA levels of IL-1 $\beta$  (A), IL-6 (B), TNF- $\alpha$  (C), CCL-2 (D), and CXCL-15 (E) were measured by real-time RT-PCR and normalized by  $\beta$ -actin. Values are presented as mean  $\pm$  SEM. N = 6 (vehicle and NaHS groups) or 10 (LPS and LPS+NaHS groups). \*  $P$ <0.05, \*\* $P$ <0.01 compared with vehicle control, #:  $P$ <0.05 compared with LPS-injected group.

doi:10.1371/journal.pone.0152838.g004



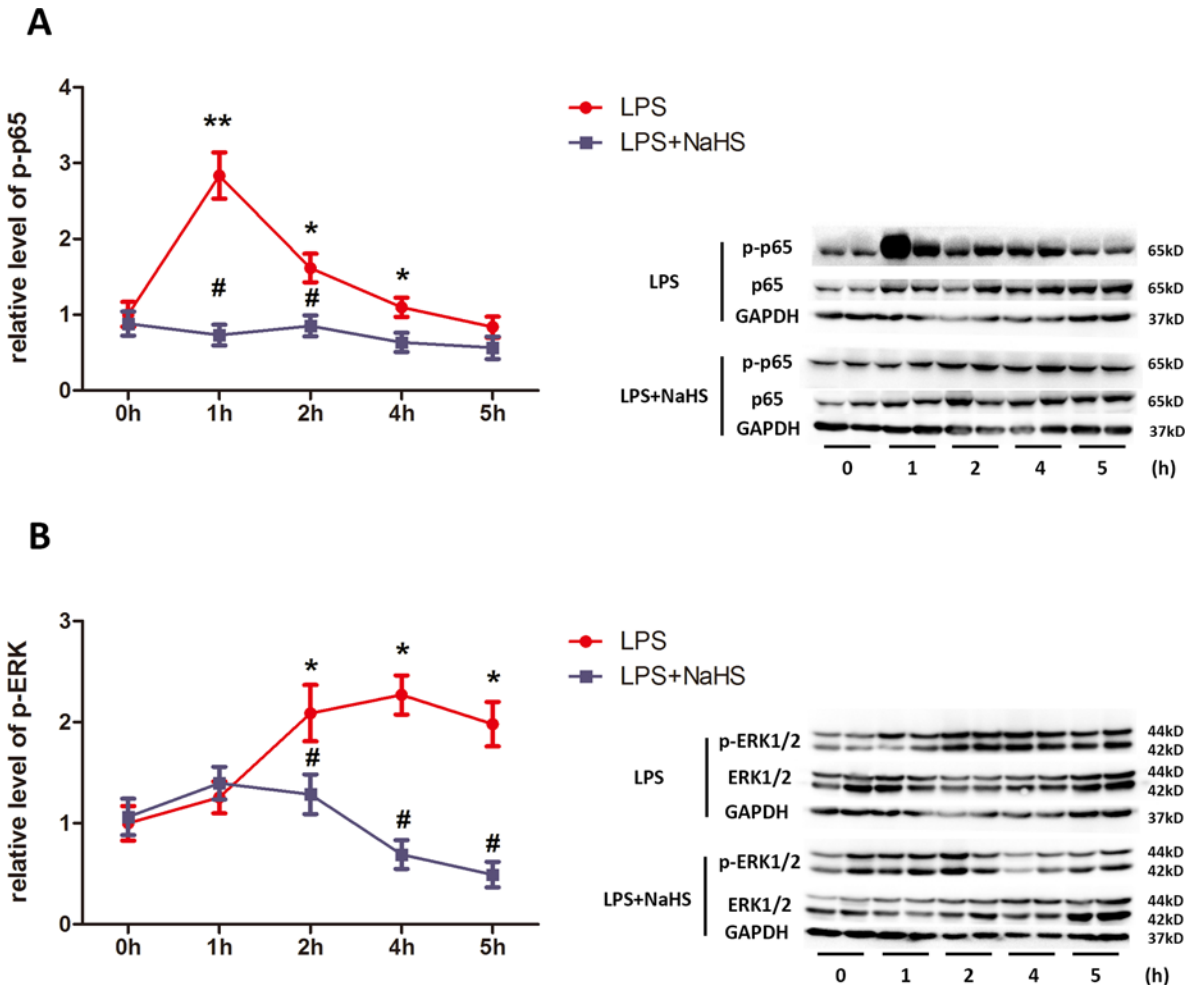


**Fig 5. The effect of NaHS on the mRNA expression of cytokines and chemokines in placenta of the normal pregnant and LPS-induced preterm labor mice.** The placenta was harvested when the LPS-injected mice delivered the first pups. The mRNA levels of IL-1 $\beta$  (A), IL-6 (B), TNF- $\alpha$  (C), CCL-2 (D), and CXCL-15 (E) were measured by real-time RT-PCR and normalized by  $\beta$ -actin. Values are presented as mean  $\pm$  SEM. N = 6 (vehicle and NaHS groups) or 10 (LPS and LPS+NaHS groups). \* P<0.05, \*\*P<0.01 compared with vehicle control, #: P<0.05 compared with LPS-injected group.

doi:10.1371/journal.pone.0152838.g005

Although two recent studies demonstrated that neutrophil depletion fails to affect inflammation-induced preterm birth [28, 29], the role of other immune cell populations known to influx in association with parturition remains unclear. Previous studies have reported that the depletion of uterine natural killer (NK) cells[30] or macrophages[31] led to significant reductions in LPS-induced preterm birth, CD45 is a wide spectrum marker for leukocytes, which was shown to significantly enrich in decidua in LPS injected mice, and was reversed by H<sub>2</sub>S treatment. It is likely that different inflammatory stimuli will induce a different immune response. Future study using more specific markers to differentiate macrophages and NK cells infiltration under this circumstance will be needed to specify the immune cell population contributing to labor affected by H<sub>2</sub>S. As mentioned, the role of H<sub>2</sub>S in inflammation is controversial, with both pro- and anti-inflammatory effects described [11, 17, 32]. The present study showed that NaHS suppressed LPS-induced expression of pro-inflammatory cytokines in myometrium, decreased the level of pro-inflammatory cytokines in circulation and inhibited leukocyte infiltration and activation of NF- $\kappa$ B and ERK 1/2 signaling pathways in myometrium. These data strongly suggest that H<sub>2</sub>S delays LPS-induced preterm labor via inhibition of inflammation.

It should be pointed out that the inhibitory effect of NaHS on LPS-induced preterm birth was dose-dependent within the dosages of 5-10mg/kg. Higher dose (15mg/kg) of NaHS had no effect on gestational length in LPS-treated mice, instead, increased the maternal mortality. Actually, a number of studies have demonstrated that the effects of H<sub>2</sub>S on inflammation are dependent on the concentration of H<sub>2</sub>S [15–18]. NaHS releases H<sub>2</sub>S instantaneously in aqueous solution at striking dosage, but won't maintain its concentration during extended period, which may account for its incapacity to completely reverse the LPS-induced preterm birth.



**Fig 6. NaHS attenuates LPS-induced activation of ERK1/2 and p65 in myometrium.** The uterine tissues were harvested 1h, 2h, 4h and 5h after LPS and/or NaHS injection. The levels of phosphorylated p65, p65, phosphorylated ERK1/2 and ERK1/2 were determined by western blotting. Phosphorylated p65 (A) and ERK1/2 (B) were normalized by p65 and ERK1/2. Values are presented as mean ± SEM. N = 4. \* P<0.05, \*\*P<0.01 compared with vehicle control group, #P<0.05, ##P<0.01 compared with LPS-injected group.

doi:10.1371/journal.pone.0152838.g006

Collectively, the relative low margin of safety and intrinsic characteristic of NaHS will largely limit its clinical use as an ideal H<sub>2</sub>S donor. The emerging new H<sub>2</sub>S donors (e.g. GYY4137)[33] with wider margin of safety and better mimicking the biological effects of naturally produced H<sub>2</sub>S *in vivo* need to be tested in future studies, and might become the more promising treatment for LPS-induced preterm labor.

Our previous study has shown that H<sub>2</sub>S suppresses spontaneous contractions in human myometrial strips [22], suggesting that H<sub>2</sub>S may play a role in the timing of the initiation of labor in human. However, in the present study, it was found that administration of NaHS (10mg/kg) with two injections did not affect the gestational length in pregnant mice. However, it was found that NaHS (10mg/kg) could decrease circulatory level of IL-1β and TNF-α and mRNA expression of IL-1β and IL-6 in myometrium. Since higher dose of NaHS can lead to maternal mortality, we did not examine the effect of higher dose of NaHS on gestational length in pregnant mice. Whether H<sub>2</sub>S plays physiological roles in the initiation of labor in mice needs to be further investigated.

Although H<sub>2</sub>S is an essential mediator of many biological functions, the underlying molecular mechanisms of its actions are still poorly understood. S-sulfhydration (SSH) of cysteine residues in proteins has now been recognized as one of the key mechanisms mediating physiologic roles of H<sub>2</sub>S [34–36]. Sen et al [37] found that H<sub>2</sub>S sulfhydrates the p65 subunit of NF-κB at cysteine-38, which augments its ability to bind the coactivator ribosomal protein S3 and stimulate transcription of anti-apoptotic genes. The SSH at the same cysteine residue or other sites of p65 may elicit the transcriptional activation of pro-inflammatory genes, which clearly awaits further investigation. Moreover, previous study showed that the modified cysteine in p65 becomes a target for S-nitrosylation, which exerts the opposite effects on anti-apoptotic genes [37]. It will be of interest to determine whether the reciprocal interaction between S-sulfhydration and S-nitrosylation also exists in the regulation of pro-inflammatory genes in myometrium.

In conclusion, the present study indicates that H<sub>2</sub>S significantly delays preterm labor induced by LPS through the inhibition of inflammation in an ERK1/2-NF-κB dependent manner. The study reveals new *in vivo* evidence for the roles of H<sub>2</sub>S in attenuating inflammation, and provides a potential novel therapeutic strategy for infection-related preterm labor.

## Supporting Information

### S1 Table. Primer sequences used for Realtime PCR.

(DOCX)

### S2 Table. Injection of NaHS alone didn't affect the onset of labor.

(DOCX)

## Author Contributions

Conceived and designed the experiments: XN LG. Performed the experiments: WL CX XY. Analyzed the data: WL CX DMO SC. Contributed reagents/materials/analysis tools: XY. Wrote the paper: XN LG.

## References

1. Liu L, Johnson HL, Cousens S, Perin J, Scott S, Lawn JE, et al. Global, regional, and national causes of child mortality: an updated systematic analysis for 2010 with time trends since 2000. *Lancet*. 2012; 379(9832):2151–61. Epub 2012/05/15. doi: [10.1016/S0140-6736\(12\)60560-1](https://doi.org/10.1016/S0140-6736(12)60560-1) PMID: [22579125](https://pubmed.ncbi.nlm.nih.gov/22579125/).
2. Blencowe H, Cousens S, Oestergaard MZ, Chou D, Moller A-B, Narwal R, et al. National, regional, and worldwide estimates of preterm birth rates in the year 2010 with time trends since 1990 for selected countries: a systematic analysis and implications. *The Lancet*. 2012; 379(9832):2162–72.
3. Marret S, Ancel PY, Marpeau L, Marchand L, Pierrat V, Larroque B, et al. Neonatal and 5-year outcomes after birth at 30–34 weeks of gestation. *Obstetrics and gynecology*. 2007; 110(1):72–80. Epub 2007/07/03. doi: [10.1097/01.AOG.0000267498.95402.bd](https://doi.org/10.1097/01.AOG.0000267498.95402.bd) PMID: [17601899](https://pubmed.ncbi.nlm.nih.gov/17601899/).
4. Challis JR, Lockwood CJ, Myatt L, Norman JE, Strauss JF 3rd, Petraglia F. Inflammation and pregnancy. *Reproductive sciences*. 2009; 16(2):206–15. doi: [10.1177/1933719108329095](https://doi.org/10.1177/1933719108329095) PMID: [19208789](https://pubmed.ncbi.nlm.nih.gov/19208789/).
5. Osmer RG, Adelman-Grill BC, Rath W, Stuhlsatz HW, Tschesche H, Kuhn W. Biochemical events in cervical ripening dilatation during pregnancy and parturition. *Journal of obstetrics and gynaecology*. 1995; 21(2):185–94. PMID: [8556580](https://pubmed.ncbi.nlm.nih.gov/8556580/).
6. Bokstrom H, Brannstrom M, Alexandersson M, Norstrom A. Leukocyte subpopulations in the human uterine cervical stroma at early and term pregnancy. *Hum Reprod*. 1997; 12(3):586–90. PMID: [9130764](https://pubmed.ncbi.nlm.nih.gov/9130764/).
7. Condon JC, Jeyasuria P, Faust JM, Mendelson CR. Surfactant protein secreted by the maturing mouse fetal lung acts as a hormone that signals the initiation of parturition. *Proceedings of the National Academy of Sciences of the United States of America*. 2004; 101(14):4978–83. Epub 2004/03/27. doi: [10.1073/pnas.0401124101](https://doi.org/10.1073/pnas.0401124101) PMID: [15044702](https://pubmed.ncbi.nlm.nih.gov/15044702/); PubMed Central PMCID: [PMC387359](https://pubmed.ncbi.nlm.nih.gov/PMC387359/).

8. Thomson AJ, Telfer JF, Young A, Campbell S, Stewart CJ, Cameron IT, et al. Leukocytes infiltrate the myometrium during human parturition: further evidence that labour is an inflammatory process. *Hum Reprod.* 1999; 14(1):229–36. Epub 1999/06/22. PMID: [10374126](#).
9. Osman I, Young A, Ledingham MA, Thomson AJ, Jordan F, Greer IA, et al. Leukocyte density and pro-inflammatory cytokine expression in human fetal membranes, decidua, cervix and myometrium before and during labour at term. *Molecular human reproduction.* 2003; 9(1):41–5. Epub 2003/01/17. PMID: [12529419](#).
10. Wallace JL, Blackler RW, Chan MV, Da Silva GJ, Elsheikh W, Flannigan KL, et al. Anti-Inflammatory and Cytoprotective Actions of Hydrogen Sulfide: Translation to Therapeutics. *Antioxid Redox Signal.* 2014. Epub 2014/03/19. doi: [10.1089/ars.2014.5901](#) PMID: [24635322](#).
11. Lo Faro ML, Fox B, Whatmore JL, Winyard PG, Whiteman M. Hydrogen sulfide and nitric oxide interactions in inflammation. *Nitric oxide: biology and chemistry / official journal of the Nitric Oxide Society.* 2014; 41C:38–47. Epub 2014/06/15. doi: [10.1016/j.niox.2014.05.014](#) PMID: [24929214](#).
12. Zhang G, Wang P, Yang G, Cao Q, Wang R. The inhibitory role of hydrogen sulfide in airway hyperresponsiveness and inflammation in a mouse model of asthma. *The American journal of pathology.* 2013; 182(4):1188–95. Epub 2013/02/12. doi: [10.1016/j.ajpath.2012.12.008](#) PMID: [23395089](#).
13. Muniraj N, Stamp LK, Badieli A, Hegde A, Cameron V, Bhatia M. Hydrogen sulfide acts as a pro-inflammatory mediator in rheumatic disease. *International journal of rheumatic diseases.* 2014. Epub 2014/09/10. doi: [10.1111/1756-185X.12472](#) PMID: [25196086](#).
14. Zhi L, Ang AD, Zhang H, Moore PK, Bhatia M. Hydrogen sulfide induces the synthesis of proinflammatory cytokines in human monocyte cell line U937 via the ERK-NF-kappaB pathway. *J Leukoc Biol.* 2007; 81(5):1322–32. Epub 2007/02/10. doi: [jlb.1006599 \[pii\] doi: 10.1189/jlb.1006599](#) PMID: [17289797](#).
15. Zanardo RC, Brancaleone V, Distrutti E, Fiorucci S, Cirino G, Wallace JL. Hydrogen sulfide is an endogenous modulator of leukocyte-mediated inflammation. *Faseb J.* 2006; 20(12):2118–20. PMID: [16912151](#).
16. Palinkas Z, Furtmuller PG, Nagy A, Jakopitsch C, Pirker KF, Magierowski M, et al. Interactions of hydrogen sulfide with myeloperoxidase. *Br J Pharmacol.* 2014. Epub 2014/05/16. doi: [10.1111/bph.12769](#) PMID: [24824874](#).
17. Whiteman M, Winyard PG. Hydrogen sulfide and inflammation: the good, the bad, the ugly and the promising. *Expert Rev Clin Pharmacol.* 2011; 4(1):13–32. Epub 2011/11/26. doi: [10.1586/ecp.10.134](#) PMID: [22115346](#).
18. Whiteman M, Haigh R, Tarr JM, Gooding KM, Shore AC, Winyard PG. Detection of hydrogen sulfide in plasma and knee-joint synovial fluid from rheumatoid arthritis patients: relation to clinical and laboratory measures of inflammation. *Annals of the New York Academy of Sciences.* 2010; 1203:146–50. doi: [10.1111/j.1749-6632.2010.05556.x](#) PMID: [20716297](#).
19. Patel P, Vatish M, Heptinstall J, Wang R, Carson RJ. The endogenous production of hydrogen sulphide in intrauterine tissues. *Reprod Biol Endocrinol.* 2009; 7:10. PMID: [19200371](#). doi: [10.1186/1477-7827-7-10](#)
20. Holwerda KM, Bos EM, Rajakumar A, Ris-Stalpers C, van Pampus MG, Timmer A, et al. Hydrogen sulfide producing enzymes in pregnancy and preeclampsia. *Placenta.* 2012; 33(6):518–21. doi: [10.1016/j.placenta.2012.02.014](#) PMID: [22391326](#).
21. Cindrova-Davies T, Herrera EA, Niu Y, Kingdom J, Giussani DA, Burton GJ. Reduced cystathionine gamma-lyase and increased miR-21 expression are associated with increased vascular resistance in growth-restricted pregnancies: hydrogen sulfide as a placental vasodilator. *The American journal of pathology.* 2013; 182(4):1448–58. doi: [10.1016/j.ajpath.2013.01.001](#) PMID: [23410520](#); PubMed Central PMCID: PMC3608014.
22. You XJ, Xu C, Lu JQ, Zhu XY, Gao L, Cui XR, et al. Expression of cystathionine beta-synthase and cystathionine gamma-lyase in human pregnant myometrium and their roles in the control of uterine contractility. *PLoS One.* 2011; 6(8):e23788. Epub 2011/09/03. doi: [10.1371/journal.pone.0023788](#) PONE-D-10-04926 [pii]. PMID: [21886822](#); PubMed Central PMCID: PMC3160323.
23. Holwerda KM, Faas MM, van Goor H, Lely AT. Gasotransmitters: a solution for the therapeutic dilemma in preeclampsia? *Hypertension.* 2013; 62(4):653–9. doi: [10.1161/HYPERTENSIONAHA.113.01625](#) PMID: [23959552](#).
24. Livak KJ, Schmittgen TD. Analysis of relative gene expression data using real-time quantitative PCR and the 2<sup>-</sup>(Delta Delta C(T)) Method. *Methods.* 2001; 25(4):402–8. PMID: [11846609](#).
25. Ray A, Chakraborty K, Ray P. Immunosuppressive MDSCs induced by TLR signaling during infection and role in resolution of inflammation. *Frontiers in cellular and infection microbiology.* 2013; 3:52. Epub 2013/09/26. doi: [10.3389/fcimb.2013.00052](#) PMID: [24066282](#); PubMed Central PMCID: PMC3776133.

26. Kakinuma C, Kuwayama C, Kaga N, Futamura Y, Katsuki Y, Shibutani Y. Trophoblastic apoptosis in mice with preterm delivery and its suppression by urinary trypsin inhibitor. *Obstetrics and gynecology*. 1997; 90(1):117–24. Epub 1997/07/01. doi: [10.1016/S0029-7844\(97\)00176-2](https://doi.org/10.1016/S0029-7844(97)00176-2) PMID: [9207825](https://pubmed.ncbi.nlm.nih.gov/9207825/).
27. Shynlova O, Nedd-Roderique T, Li Y, Dorogin A, Lye SJ. Myometrial immune cells contribute to term parturition, preterm labour and post-partum involution in mice. *J Cell Mol Med*. 2013; 17(1):90–102. Epub 2012/12/05. doi: [10.1111/j.1582-4934.2012.01650.x](https://doi.org/10.1111/j.1582-4934.2012.01650.x) PMID: [23205502](https://pubmed.ncbi.nlm.nih.gov/23205502/); PubMed Central PMCID: [PMC3823139](https://pubmed.ncbi.nlm.nih.gov/PMC3823139/).
28. Filipovich Y, Agrawal V, Crawford SE, Fitchew P, Qu X, Klein J, et al. Depletion of polymorphonuclear leukocytes has no effect on preterm delivery in a mouse model of Escherichia coli-induced labor. *American journal of obstetrics and gynecology*. 2015; 213(5):697 e1–e10. doi: [10.1016/j.ajog.2015.07.025](https://doi.org/10.1016/j.ajog.2015.07.025) PMID: [26215328](https://pubmed.ncbi.nlm.nih.gov/26215328/); PubMed Central PMCID: [PMC4631622](https://pubmed.ncbi.nlm.nih.gov/PMC4631622/).
29. Rinaldi SF, Catalano RD, Wade J, Rossi AG, Norman JE. Decidual neutrophil infiltration is not required for preterm birth in a mouse model of infection-induced preterm labor. *J Immunol*. 2014; 192(5):2315–25. doi: [10.4049/jimmunol.1302891](https://doi.org/10.4049/jimmunol.1302891) PMID: [24501200](https://pubmed.ncbi.nlm.nih.gov/24501200/); PubMed Central PMCID: [PMC3932811](https://pubmed.ncbi.nlm.nih.gov/PMC3932811/).
30. Lin Y, Xie M, Chen Y, Di J, Zeng Y. Preterm delivery induced by LPS in syngeneically impregnated BALB/c and NOD/SCID mice. *Journal of reproductive immunology*. 2006; 71(2):87–101. Epub 2006/06/27. doi: [10.1016/j.jri.2006.01.005](https://doi.org/10.1016/j.jri.2006.01.005) PMID: [16797722](https://pubmed.ncbi.nlm.nih.gov/16797722/).
31. Gonzalez JM, Franzke CW, Yang F, Romero R, Girardi G. Complement activation triggers metalloproteinases release inducing cervical remodeling and preterm birth in mice. *The American journal of pathology*. 2011; 179(2):838–49. Epub 2011/08/02. doi: [10.1016/j.ajpath.2011.04.024](https://doi.org/10.1016/j.ajpath.2011.04.024) PMID: [21801872](https://pubmed.ncbi.nlm.nih.gov/21801872/); PubMed Central PMCID: [PMC3157168](https://pubmed.ncbi.nlm.nih.gov/PMC3157168/).
32. Hua W, Zhou SL, Gong FQ. Biphasic regulation of hydrogen sulfide in inflammation. *Chinese medical journal*. 2013; 126(7):1360–3. Epub 2013/04/06. PMID: [23557572](https://pubmed.ncbi.nlm.nih.gov/23557572/).
33. Li L, Whiteman M, Guan YY, Neo KL, Cheng Y, Lee SW, et al. Characterization of a novel, water-soluble hydrogen sulfide-releasing molecule (GYY4137): new insights into the biology of hydrogen sulfide. *Circulation*. 2008; 117(18):2351–60. Epub 2008/04/30. doi: [10.1161/CIRCULATIONAHA.107.753467](https://doi.org/10.1161/CIRCULATIONAHA.107.753467) PMID: [18443240](https://pubmed.ncbi.nlm.nih.gov/18443240/).
34. Kimura H. Signaling of Hydrogen Sulfide and Polysulfides. *Antioxid Redox Signal*. 2014. Epub 2014/09/03. doi: [10.1089/ars.2014.6082](https://doi.org/10.1089/ars.2014.6082) PMID: [25178405](https://pubmed.ncbi.nlm.nih.gov/25178405/).
35. Paul BD, Snyder SH. H<sub>2</sub>S signalling through protein sulfhydrylation and beyond. *Nature reviews Molecular cell biology*. 2012; 13(8):499–507. Epub 2012/07/12. doi: [10.1038/nrm3391](https://doi.org/10.1038/nrm3391) PMID: [22781905](https://pubmed.ncbi.nlm.nih.gov/22781905/).
36. Kabil O, Motl N, Banerjee R. H<sub>2</sub>S and its role in redox signaling. *Biochimica et biophysica acta*. 2014; 1844(8):1355–66. Epub 2014/01/15. doi: [10.1016/j.bbapap.2014.01.002](https://doi.org/10.1016/j.bbapap.2014.01.002) PMID: [24418393](https://pubmed.ncbi.nlm.nih.gov/24418393/); PubMed Central PMCID: [PMC4048824](https://pubmed.ncbi.nlm.nih.gov/PMC4048824/).
37. Sen N, Paul BD, Gadalla MM, Mustafa AK, Sen T, Xu R, et al. Hydrogen sulfide-linked sulfhydrylation of NF- $\kappa$ B mediates its antiapoptotic actions. *Molecular cell*. 2012; 45(1):13–24. Epub 2012/01/17. doi: [10.1016/j.molcel.2011.10.021](https://doi.org/10.1016/j.molcel.2011.10.021) PMID: [22244329](https://pubmed.ncbi.nlm.nih.gov/22244329/); PubMed Central PMCID: [PMC3261430](https://pubmed.ncbi.nlm.nih.gov/PMC3261430/).