

POSTER PRESENTATION

Open Access

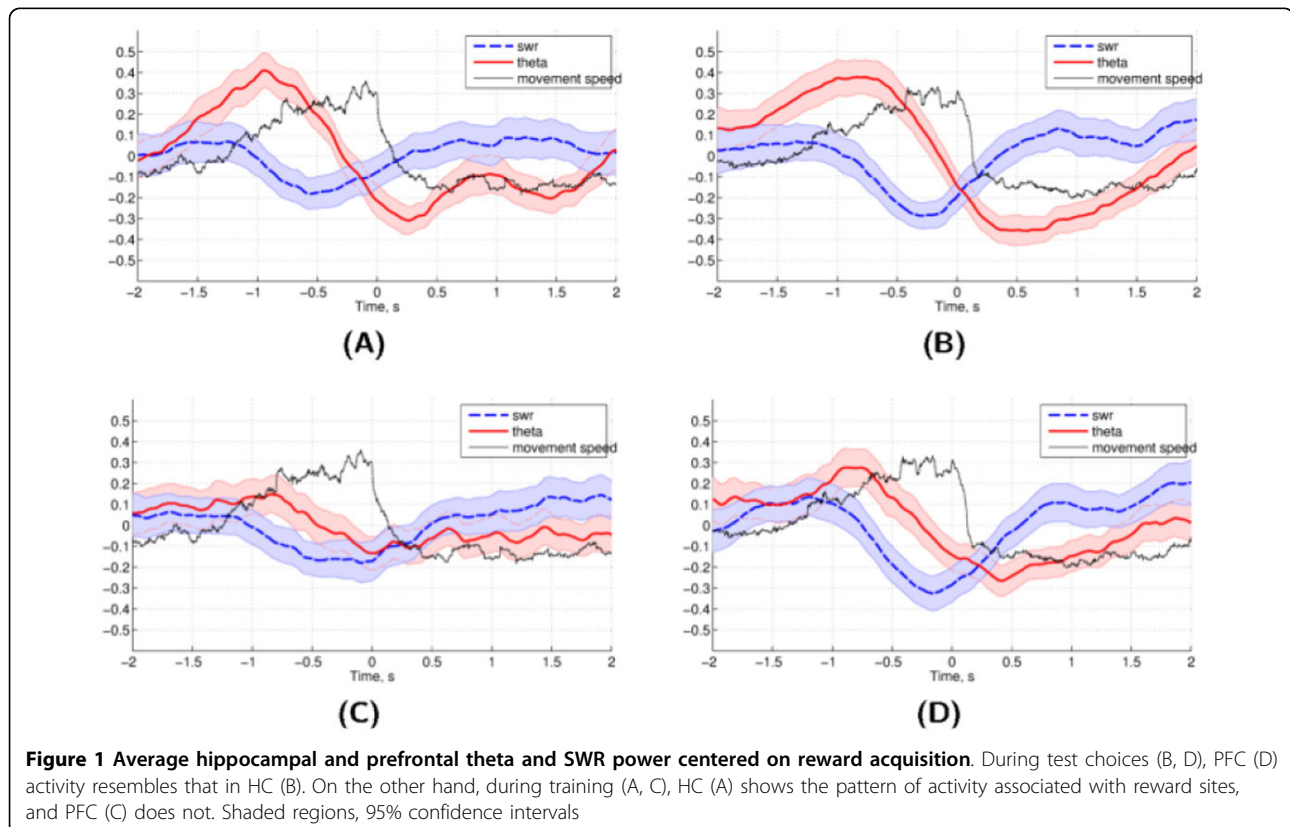
# Prefrontal-hippocampal theta coherence, sharp wave ripples, and bursts of cortical unit activity underlie choices and encoding in the radial arm maze

Maxym V Myroshnychenko<sup>1\*</sup>, Christopher C Lapish<sup>2</sup>

From 24th Annual Computational Neuroscience Meeting: CNS\*2015  
Prague, Czech Republic. 18-23 July 2015

The radial arm maze (RAM) is a foraging task that is often used to assess executive function guided decision-making [1-3]. Optimal foraging strategies on this task require the integration of executive and memory

systems, which include retrospective and prospective codes. To explore the neural basis of decision-making during RAM performance, the current study acquired multielectrode single-unit and local field potential (LFP)



\* Correspondence: mmyros@gmail.com

<sup>1</sup>Program in Neuroscience, Indiana University, Bloomington, IN 47401, USA  
Full list of author information is available at the end of the article

recordings simultaneously in hippocampus (HC) and anterior cingulate (ACC). Initially, rats were presented with four of the eight total maze arms open at once (“training phase”), and the rest of the arms were opened up after the subjects collected the rewards and a one-minute delay was completed (“test phase”). Any arm re-entries were counted as errors, and only trials with one test phase error or less were used in the analysis. ACC unit firing was elevated at choice points and reduced at reward points. Moreover, both ACC and the HC showed elevated theta power shortly prior to the reward point and sharp wave ripples shortly after reward acquisition on correct choices only, which is consistent with findings in other choice tasks [4,5]. These observations held during test phase (Figure 1, right panels) and were disrupted during the training phase in ACC, but not the HC (Figure 1, left panels). It has been suggested that HC sharp wave ripples contain episodes of replay of visited locations and theta of locations ahead of the animal [4,5] - information necessary for decision-making using both prospective and retrospective codes. Theta and ripples are present in the HC during both training and test phases, consistent with lesion evidence that hippocampus is necessary for both prospective and retrospective strategies [1]. In ACC, theta and ripples are only present during test phase and not during training phase, which is in line the evidence showing that prefrontal cortex is only necessary for prospective coding [1]. These task phase-dependent observations may help explain how HC and ACC networks integrate information related to prospective and retrospective codes.

#### Authors' details

<sup>1</sup>Program in Neuroscience, Indiana University, Bloomington, IN 47401, USA.

<sup>2</sup>Addiction Neuroscience Program, Indiana University-Purdue University, Indianapolis, IN 46202, USA.

Published: 18 December 2015

#### References

1. Cook R, Brown M, Riley M: Flexible memory processing by rats: Use of prospective and retrospective information in the radial maze. *J ExperPsych* 1985, **11**(3):453-69.
2. Lapish CC, Durstewitz D, Chandler LJ, Seamans JK: Successful choice behavior is associated with distinct and coherent network states in anterior cingulate cortex. *PNAS* 2008, **105**(33):11963-8.
3. Zhou W, Hohmann AG, Crystal JD: Rats answer an unexpected question after incidental encoding. *Current biology* 2012, **22**(12):1149-53.
4. Benchenane K, Peyrache A, Khamassi M, Tierney PL, Gioanni Y, Battaglia FP, Wiener SI: Coherent theta oscillations and reorganization of spike timing. *Neuron* 2010, **66**(6):921-36.
5. Jadhav SP, Kemere C, German PW, Frank LM: Awake hippocampal sharp-wave ripples support spatial memory. *Science* 2012, **336**(6087):1454-8.

doi:10.1186/1471-2202-16-S1-P139

**Cite this article as:** Myroshnychenko and Lapish: Prefrontal-hippocampal theta coherence, sharp wave ripples, and bursts of cortical unit activity underlie choices and encoding in the radial arm maze. *BMC Neuroscience* 2015 **16**(Suppl 1):P139.

Submit your next manuscript to BioMed Central  
and take full advantage of:

- Convenient online submission
- Thorough peer review
- No space constraints or color figure charges
- Immediate publication on acceptance
- Inclusion in PubMed, CAS, Scopus and Google Scholar
- Research which is freely available for redistribution

Submit your manuscript at  
www.biomedcentral.com/submit

