

Exercise Protects against Diet-Induced Insulin Resistance through Downregulation of Protein Kinase C β in Mice

Xiaoquan Rao¹, Jixin Zhong², Xiaohua Xu¹, Brianna Jordan¹, Santosh Maurya³, Zachary Braunstein², Tse-Yao Wang¹, Wei Huang^{2,4}, Sudha Aggarwal^{2,4}, Muthu Periasamy³, Sanjay Rajagopalan², Kamal Mehta^{2,4*}, Qinghua Sun^{1,2*}

1 College of Public Health, The Ohio State University, Columbus, Ohio, United States of America, **2** Davis Heart & Lung Research Institute, The Ohio State University, Columbus, Ohio, United States of America, **3** Department of Physiology and Cell Biology, The Ohio State University, Columbus, Ohio, United States of America, **4** Department of Molecular and Cellular Biochemistry, The Ohio State University, Columbus, Ohio, United States of America

Abstract

Physical exercise is an important and effective therapy for diabetes. However, its underlying mechanism is not fully understood. Protein kinase C β (PKC β) has been suggested to be involved in the pathogenesis of obesity and insulin resistance, but the role of PKC β in exercise-induced improvements in insulin resistance is completely unknown. In this study, we evaluated the involvement of PKC β in exercise-attenuated insulin resistance in high-fat diet (HFD)-fed mice. PKC $\beta^{-/-}$ and wild-type mice were fed a HFD with or without exercise training. PKC protein expression, body and tissue weight change, glucose and insulin tolerance, metabolic rate, mitochondria size and number, adipose inflammation, and AKT activation were determined to evaluate insulin sensitivity and metabolic changes after intervention. PKC β expression decreased in both skeletal muscle and liver tissue after exercise. Exercise and PKC β deficiency can alleviate HFD-induced insulin resistance, as evidenced by improved insulin tolerance. In addition, fat accumulation and mitochondrial dysfunction induced by HFD were also ameliorated by both exercise and PKC β deficiency. On the other hand, exercise had little effect on PKC $\beta^{-/-}$ mice. Further, our data indicated improved activation of AKT, the downstream signal molecule of insulin, in skeletal muscle and liver of exercised mice, whereas PKC β deficiency blunted the difference between sedentary and exercised mice. These results suggest that downregulation of PKC β contributes to exercise-induced improvement of insulin resistance in HFD-fed mice.

Citation: Rao X, Zhong J, Xu X, Jordan B, Maurya S, et al. (2013) Exercise Protects against Diet-Induced Insulin Resistance through Downregulation of Protein Kinase C β in Mice. *PLoS ONE* 8(12): e81364. doi:10.1371/journal.pone.0081364

Editor: Cedric Moro, INSERM/UMR 1048, France

Received: June 18, 2013; **Accepted:** October 11, 2013; **Published:** December 9, 2013

Copyright: © 2013 Sun et al. This is an open-access article distributed under the terms of the Creative Commons Attribution License, which permits unrestricted use, distribution, and reproduction in any medium, provided the original author and source are credited.

Funding: This work was supported by ES018900 to Dr. Qinghua Sun. The funder had no role in study design, data collection and analysis, decision to publish, or preparation of the manuscript. The funder had no role in study design, data collection and analysis, decision to publish, or preparation of the manuscript.

Competing Interests: Dr. Qinghua Sun is a PLOS ONE Editorial Board member. This does not alter the authors' adherence to all the PLOS ONE policies on sharing data and materials.

* E-mail: sun.224@osu.edu (QS); mehta.80@osu.edu (KM)

Introduction

Diabetes mellitus, especially type 2 diabetes, is one of the most common chronic diseases worldwide [1]. Diabetes is growing worldwide both in number and significance, due to an increase in economic development and urbanization. Diabetes was reported to affect 366 million people globally in 2011, and this number is expected to rise to 552 million by 2030 in both developed and developing countries [2].

Protein kinase C (PKC) is a family of protein kinases that phosphorylates other proteins at serine and threonine residues [3,4]. PKC family proteins are involved in multiple cellular processes, including metabolism, differentiation, and cell growth. They are classified into subfamilies, including conventional isoforms (α , β , and γ) that are dependent on both Ca²⁺ and diacylglycerol (DAG) for stimulation, novel isoforms (δ , ϵ , θ , and η) that are dependent on DAG only, and atypical isoforms (ζ and ι/λ) that are independent of Ca²⁺ and DAG [3,4]. Abnormal expression of PKC family proteins has been observed in skeletal muscles of patients and animals with diabetes [5,6,7]. Among these PKC isoforms, PKC β protein content was significantly higher,

whereas PKC θ and PKC η were significantly lower, in muscle of obese patients compared with muscle of lean control subjects, without a corresponding change in membrane-associated PKC activity [5]. The PKC β isoform inhibitor ruboxistaurin, which is the most studied PKC inhibitor, has shown some positive effects on diabetes and diabetic complications in clinical trials [8,9,10]. Our previous studies demonstrated that PKC β deficiency alleviated insulin resistance and obesity in mice [11,12]. Although PKC β is important in both obesity and insulin resistance, its role in exercise-related changes in HFD-induced metabolic disorders has not yet been reported.

Numerous studies have shown that a high-fat diet (HFD) and sedentary behavior increase the risk of obesity and insulin resistance, whereas increased physical activity reduces this risk [13,14,15,16]. The potential mechanism by which exercise attenuates HFD-induced insulin resistance involves increasing insulin sensitivity and glucose transport into contracting skeletal muscles [17]. However, the underlying molecular mechanisms are not fully understood due to the complicated processes involved in exercise [17]. Given the important regulatory role of PKC β in insulin resistance, we postulated that it might also play a role in

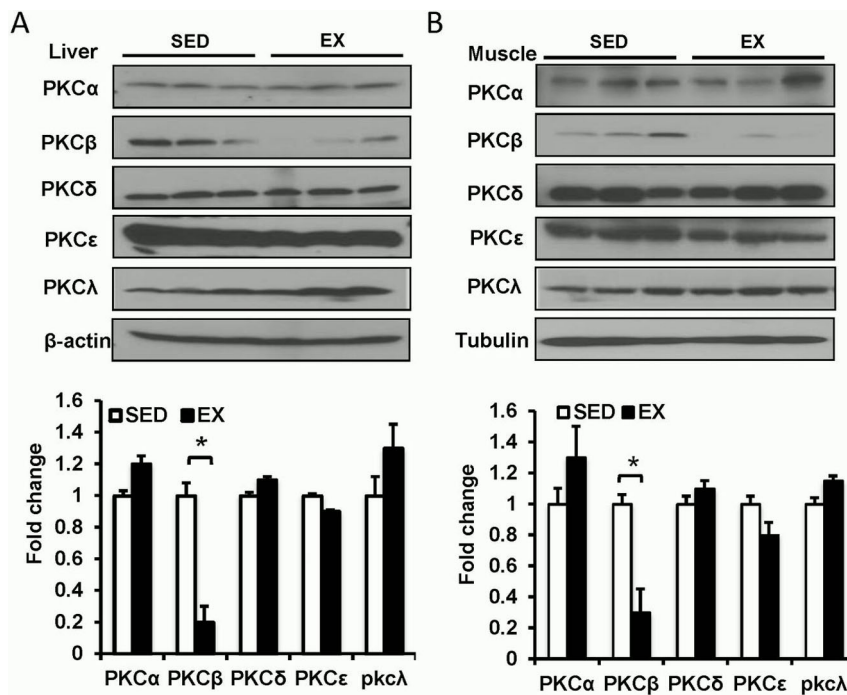


Figure 1. Expression of PKC isoforms in HFD and exercised mice. A, Expressions of PKC isoforms in liver. Wild-type (WT) mice fed on a high-fat diet (HFD) feeding were either exercised (EX) or sedentary (SED) for 8 weeks. Liver was isolated and used for Western blot detection of PKC isoforms (Top panel, representative images; bottom panel, statistical analysis). *, $P < 0.05$. B, Expressions of PKC isoforms in skeletal muscle. WT mice fed on a HFD were either exercised or sedentary for 8 weeks. Skeletal muscle tissue was isolated and used for Western blot detection of PKC isoforms (Top panel, representative images; bottom panel, statistical analysis). *, $P < 0.05$. doi:10.1371/journal.pone.0081364.g001

exercise-induced improvement of insulin resistance. We thereby used PKC β knockout mice and a diet-induced obesity model to test this hypothesis. To our knowledge, this is the first study demonstrating the role of PKC β in exercise-attenuated insulin resistance by using PKC β deficiency mice.

Methods

Animals and diet

Production of PKC $\beta^{-/-}$ mice in C57BL/6J background and genotypic determination were performed as described previously [18]. At the age of four weeks, PKC $\beta^{-/-}$ and wild-type (WT) C57BL/6J mice were fed a high-fat diet (HFD) containing 42% of calories from fat (TD88137, Harlan, Madison, WI). At the age of 12 weeks, both WT and PKC $\beta^{-/-}$ mice were randomly assigned into sedentary (SED) or exercise (EX) group for 8 weeks (Figure S1). All mice were allowed to eat and drink *ad libitum* throughout the duration of the study. The mice were housed on a 12:12-hour light-dark cycle in a temperature and humidity controlled vivarium. National Institutes of Health guidelines for the care and use of laboratory animals were strictly followed, and all experiments were approved by the Animal Care and Use Committee at The Ohio State University.

Exercise intervention

Exercise intervention was performed as described previously [19]. Briefly, mice in exercise group were exercise-trained on a motorized treadmill (Columbus Instruments, Columbus, OH) at a speed of 15 m/min, 40 min/day, and 5 days/week for 8 weeks. Mice in SED group were put on the same treadmill without running for 40 min/day and 5 days/week for 8 weeks.

Body weight, tissue weight, food intake and water intake

Body weight, food intake, and water intake were recorded weekly during the exercise intervention. 24 hours after the end of the exercise intervention, all mice were fasted overnight and euthanized by CO₂ inhalation overdose. Blood samples were obtained and plasma was collected and stored at -80°C immediately. Heart, liver, calf muscles (gastrocnemius and soleus), thigh muscle (quadriceps femoris and adductor magnus), epididymal fat, inguinal fat, together with brown adipose tissue from the interscapular depot were carefully excised. All the tissue samples were weighed and then immediately frozen in liquid nitrogen.

Magnetic resonance imaging (MRI)

Body fat mass (abdominal cavity) was evaluated by *in vivo* MRI, as described previously [19]. Briefly, 11.7 T small bore vertical NMR system (BioSpec, Bruker, Ettlingen, Germany) was used. First, mouse was anesthetized with isoflurane (1.5–2.0%) and placed in a 30-mm birdcage coil. After the mouse was positioned in the scanner, a coronal spin-echo localizing sequence was used to identify both kidneys. Finally, from the superior pole of the uppermost kidney to the caudal aspect of the mouse, thirty contiguous 1-mm thick axial slices were obtained using a spin-echo sequence with a 256 \times 256 pixel size (30 \times 30 mm). Data were analyzed by National Institutes of Health Image J software.

Glucose tolerance test (GTT) and insulin tolerance test (ITT)

After 8 weeks exercise intervention, a glucose tolerance test (overnight fasting) and insulin tolerance test (6 hours fasting) were performed on all mice as previously described [20]. Briefly, mice

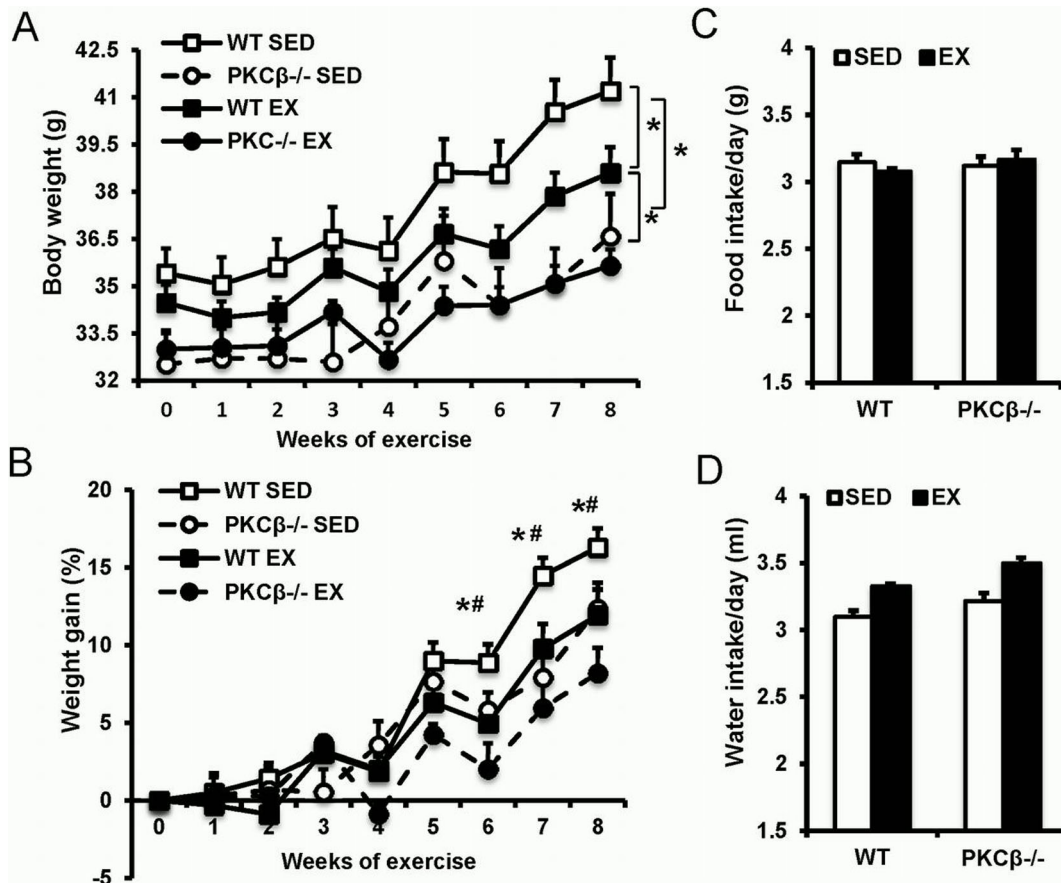


Figure 2. Changes in body weight, food and water intake following HFD and exercise. A, Effect of exercise on body weight of WT and PKC $\beta^{-/-}$ mice. Mice were weighed once a week during the exercise-training period. B, Weight gain of WT and PKC $\beta^{-/-}$ mice during the exercise-training period. Weight gain was less in WT mice but not in PKC $\beta^{-/-}$ mice after exercise. C & D, Food intake (C) and water intake (D) of WT and PKC $\beta^{-/-}$ mice with or without exercise. WT, wild-type; EX, exercise; SED, sedentary; Data are shown as mean \pm SEM; n=8 for each group; *, $P<0.05$ WT vs. PKC $\beta^{-/-}$; #, $P<0.05$ EX vs. SED. doi:10.1371/journal.pone.0081364.g002

were weighed and then injected intraperitoneally with either glucose (2 mg/kg body weight) or insulin (0.5 U/kg body weight). Blood samples were collected through the tail vein and glucose concentrations were measured before and 30, 60, 90 and 120 min after the challenge on an Elite Glucometer (Bayer, Leverkusen, Germany). Area under the curve was calculated using GraphPad software.

Plasma insulin, leptin, adiponectin level and insulin resistance assessment

After overnight fasting, blood samples were collected into EDTA-coated tubes and plasma was collected after centrifugation at 2000 \times g for 15 min. Plasma insulin level was determined following a standard protocol of an ultrasensitive Mouse Insulin ELISA kit (Crystal Chem, Downers Grove, IL) [21]. Leptin level was determined following a standard protocol of the Quantikine Mouse Leptin ELISA kit (R&D, Minneapolis, MN). Adiponectin level was measured according to the manufacturer's instructions using the Quantikine Mouse Adiponectin/Acrp30 ELISA kit (R&D, Minneapolis, MN). Insulin resistance (IR) was calculated using the homeostasis model assessment (HOMA) method based on the formula $HOMA - IR = Glucose(mg/dL) \times Insulin(\mu U/mL) \div 405$ [22].

Oxygen consumption and CO $_2$ production measurements

Oxygen consumption and CO $_2$ production were measured simultaneously for each mouse using a computer-controlled, Comprehensive Lab Animal Monitoring (CLAMS) System (Columbus Instruments, Columbus, OH) [23]. Each mouse was measured individually in a resting state for 24 hours at 22°C in presence of food and water or measured individually when running on a treadmill at a speed of 15 m/min for 40 min.

Measurement of blood inflammatory biomarkers

At the end of the study, blood was collected and plasma was stored at -80°C for the analysis of cytokines. Plasma levels of TNF- α , IFN- γ , and monocyte chemoattractant protein 1 (MCP-1) were measured using Mouse Inflammation 6-Plex Kit from BD Bioscience (San Diego, CA), according to manufacturer's instructions. The cytokine levels were then determined using a BD LSR II instrument and analyzed by the BD CBA software (BD Biosciences, San Jose, CA) [21].

Transmission electron microscopy

To investigate the mitochondrial changes *in situ* between groups, we examined the ultrastructure of mitochondria by transmission

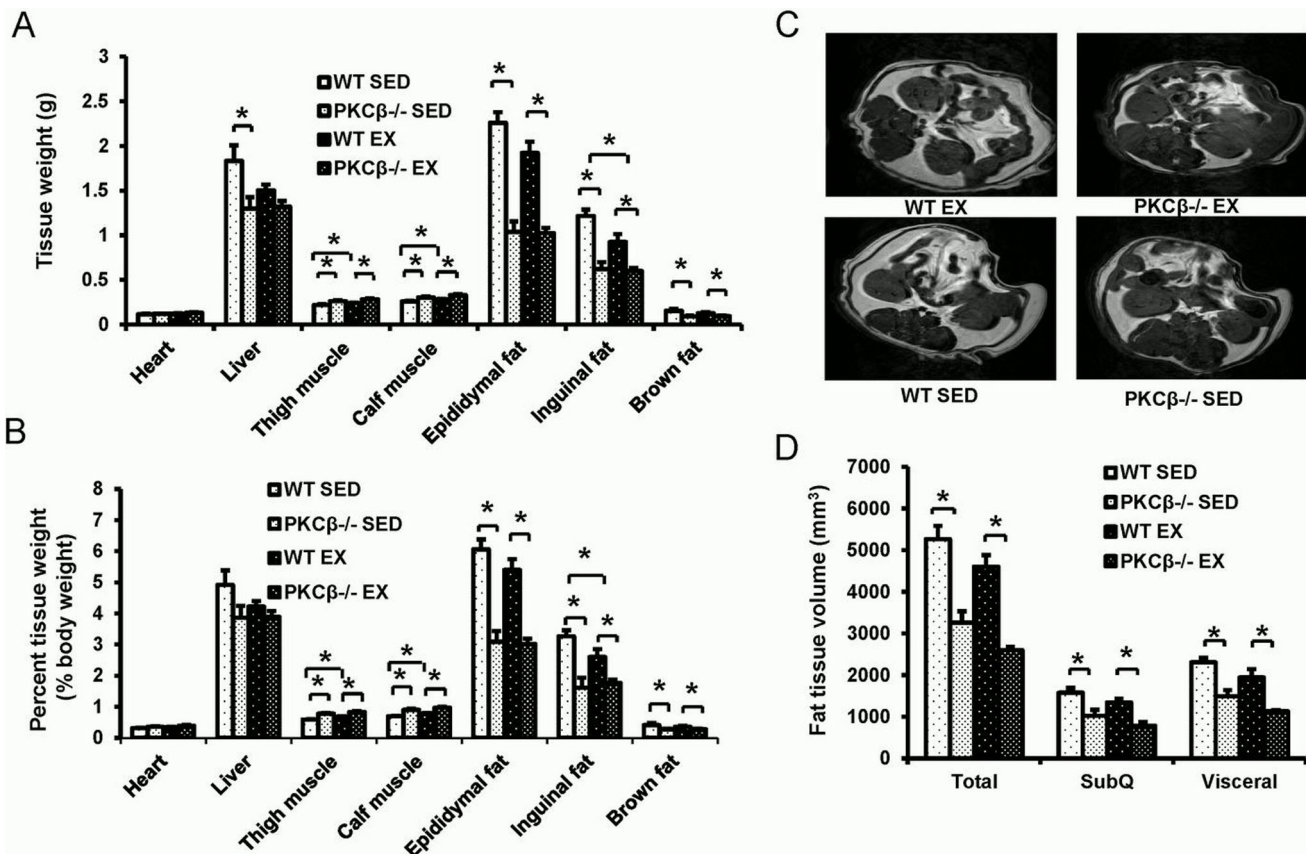


Figure 3. Changes in fat and muscle tissue after exercise in WT and PKC $\beta^{-/-}$ mice. A, Tissue weights in WT and PKC $\beta^{-/-}$ mice with or without exercise. Muscle (thigh and calf) weights were increased and inguinal fat weight decreased in WT mice after exercise but not in PKC $\beta^{-/-}$ mice. PKC $\beta^{-/-}$ mice had higher muscle weight and lower fat weight compared to WT mice. B, Percent tissue weight over body weight in WT and PKC $\beta^{-/-}$ mice with or without exercise. Exercise increased muscle percentage and decreased percentage of inguinal fat weight in WT mice but not in PKC $\beta^{-/-}$ mice. PKC $\beta^{-/-}$ mice had higher muscle weight and lower fat weight compared to WT mice with the same intervention. C, Representative images of magnetic resonance imaging (MRI) of abdominal cavity. D, Quantitative analysis of fat volume as determined by MRI. PKC $\beta^{-/-}$ mice had significantly lower fat volumes of total, subcutaneous (SubQ), and visceral fats than WT mice and exercise did not significantly change it compared to sedentary (SED) intervention. WT, wild-type; EX, exercise; SED, sedentary; Data are shown as mean \pm SEM; N=8, *, $P < 0.05$. doi:10.1371/journal.pone.0081364.g003

electron microscopy (TEM) as previously described [19]. Briefly, muscle tissue was excised into small pieces (around 1 mm³) and fixed in 2.5% glutaraldehyde (0.1 M phosphate buffer, pH 7.4) for 3 hours. Then each specimen was post-fixed in 1% osmium tetroxide for 1 hour and dehydrated through a graded ethanol series (50–100%). After embedded in eponate 12 resin, sections at a thickness of 80 nm were cut and stained by 2% aqueous uranyl acetate followed by lead citrate. The grids were loaded and observed in a Tecnai G2 Spirit transmission electron microscope (FEI, Hillsboro, OR). The images of mitochondria were captured at a magnification of 18,500 \times . For the morphometric analysis, five micrographs per tissue were counted. Mitochondrial size and number were analyzed by National Institutes of Health Image J software.

Immunoblotting

Mice tissues were collected after overnight fasting. Tissue lysates from the soleus muscle and liver were prepared in a lysis buffer containing 50 mM Tris-HCl (pH 8.0), 2 mM EGTA, 1% SDS, and protease inhibitors. After adjusting the protein concentration, the samples were loaded, and proteins were separated by 10% SDS/PAGE gel electrophoresis and transferred to PVDF membrane. The membranes were incubated with specific primary

antibodies against PKC α , PKC λ (BD Transduction Laboratories, Lexington, KY), phospho-AKT, AKT (Cell Signaling Technology, Danvers, MA; 1:1000 dilution), PKC β , PKC δ , PKC ϵ , β -actin (Santa Cruz, Santa Cruz, CA; 1:200 dilution), and GAPDH (eBioscience, San Diego, CA; 1:1000 dilution), followed by visualization using horseradish peroxidase-conjugated specific secondary antibodies. All immunoreactive bands were detected by SuperSignal substrate kit (Thermo Fisher, Rockford, IL).

Data analyses

All data are expressed as means \pm SEM unless otherwise specified. Difference between two groups was tested by student's *t* test. Differences among groups were tested by two-way ANOVA and Bonferroni's post hoc test using GraphPad Prism ver. 5 (GraphPad Software, La Jolla, CA). *P* values of < 0.05 were considered statistically significant.

Results

Decreased expression of PKC β in both skeletal muscle and liver after exercise

PKC proteins have been suggested to play a role in the insulin sensitivity of skeletal muscle [5,6,7]. To investigate the involve-

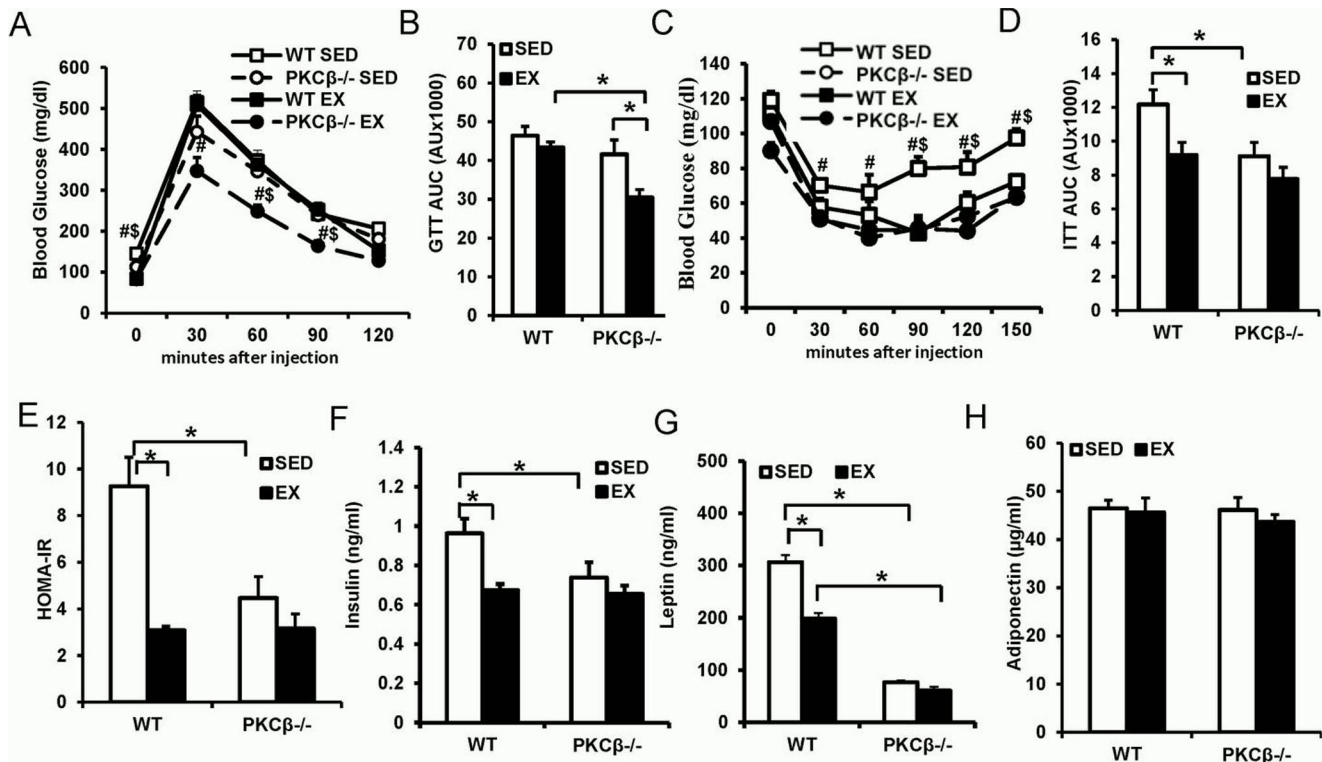


Figure 4. Effect of exercise and PKC β deficiency on insulin resistance. A & B, Intraperitoneal glucose tolerance test (IPGTT) in WT and PKC β ^{-/-} mice with or without exercise. A, Blood glucose responses; B, Area under the curve (AUC) of IPGTT. C & D, Intraperitoneal insulin tolerance test (IPITT) in WT and PKC β ^{-/-} mice with or without exercise. C, Blood glucose curve; D, Area under the curve (AUC) of IPITT. E, Homeostasis model assessment-estimated insulin resistance (HOMA-IR) in WT and PKC β ^{-/-} mice with or without exercise. HOMA-IR was calculated using the formula HOMA-IR = fasting glucose (mg/dl) x fasting insulin (μ U/mL)/405. F, Fasting serum insulin level. After 16 h of fasting, serum was collected for ELISA detection of insulin. Exercise decreased fasting insulin level in WT but not in PKC β ^{-/-} mice. Insulin level in sedentary PKC β ^{-/-} mice was lower than that of sedentary WT mice. G, Fasting serum leptin level. After 16 h of fasting, serum was collected for ELISA detection of leptin. Exercise decreased fasting leptin level in WT but not in PKC β ^{-/-} mice. Leptin level in sedentary PKC β ^{-/-} mice was lower than that of sedentary WT mice. H, Fasting serum adiponectin level. After 16 h of fasting, serum was collected for ELISA detection of leptin. No significant difference of adiponectin was detected among the 4 groups. WT, wild-type; EX, exercise; SED, sedentary; Data are expressed as mean \pm SEM; n=8, #, $P < 0.05$, WT vs. PKC β ^{-/-}; \$, $P < 0.05$, EX vs. SED; *, $P < 0.05$. doi:10.1371/journal.pone.0081364.g004

ment of PKC in exercise, we tested the expression of different isoforms in the skeletal muscle and liver after 8 weeks of exercise. As depicted in Figures 1A & 1B, no significant differences of PKC α or δ between exercise and sedentary groups were detected in both skeletal muscle and liver in WT mice. PKC λ was increased in muscle and liver after exercise. PKC ϵ level was slightly decreased in the muscle but was not changed in the liver of exercised mice compared with sedentary controls. It is noteworthy that PKC β was significantly reduced in both the skeletal muscle (SED 1 ± 0.08 vs. EX 0.21 ± 0.09 , $p < 0.05$) and liver (SED 1 ± 0.06 vs. EX 0.3 ± 0.15 , $p < 0.05$) of exercised mice. These data suggested that PKC β might be involved in exercise-induced metabolic changes.

Both exercise and PKC β deficiency ameliorated HFD-induced obesity

After eight weeks of exercise, exercised WT mice had a less body weight compared with WT mice (WT SED 41.2 ± 4.2 g vs. WT EX 38.6 ± 3.2 g after 8 weeks of exercise, $p < 0.05$). The body weights of both sedentary and exercised PKC β ^{-/-} mice were lower than that of corresponding WT mice (WT SED 41.2 ± 4.2 g vs. PKC β ^{-/-} SED 36.6 ± 5.4 g, $p < 0.05$; WT EX 38.6 ± 3.2 g vs. PKC β ^{-/-} EX 35.6 ± 2.1 g, $p < 0.05$). Interestingly, we failed to detect a significant difference in body weight between exercise

PKC β ^{-/-} and sedentary PKC β ^{-/-} mice (Figure 2A). The total weight gain of sedentary WT mice was significantly higher than in the other groups, while no significant difference of weight gain was observed between exercised WT and exercised PKC β ^{-/-} mice (WT SED 16.3 ± 1.2 g vs. WT EX 11.9 ± 1.7 g vs. PKC β ^{-/-} SED 12.4 ± 1.7 g vs. PKC β ^{-/-} EX 8.2 ± 1.6 g, $p < 0.05$; Figure 2B). Despite lower body weight, the daily food and water intake of PKC β ^{-/-} mice was similar to that of WT mice (Food intake: WT SED 3.14 ± 0.06 g vs. WT EX 3.08 ± 0.02 g vs. PKC β ^{-/-} SED 3.12 ± 0.07 g vs. PKC β ^{-/-} EX 3.17 ± 0.07 g, $p > 0.05$; Water intake: WT SED 3.10 ± 0.04 mL vs. WT EX 3.33 ± 0.15 mL vs. PKC β ^{-/-} SED 3.22 ± 0.06 mL vs. PKC β ^{-/-} EX 3.50 ± 0.04 mL, $p > 0.05$; Figures 2C & 2D).

Exercise reduced fat mass and increased skeletal muscle weight in WT mice but not PKC β ^{-/-} mice. Compared to WT controls, PKC β ^{-/-} mice (both exercised and sedentary) had slightly increased tissue weights of skeletal muscles and significantly reduced tissue weights of inguinal fat, epididymal fat, and interscapular brown fat. The liver weight of sedentary WT mice was also higher than that of sedentary PKC β ^{-/-} mice, while no significant difference of liver weight was observed among other groups (Figure 3A). Similar results of tissue weight were obtained when normalized to body weight (Figure 3B). Consistently, MRI scans also suggested that both the visceral and subcutaneous fat

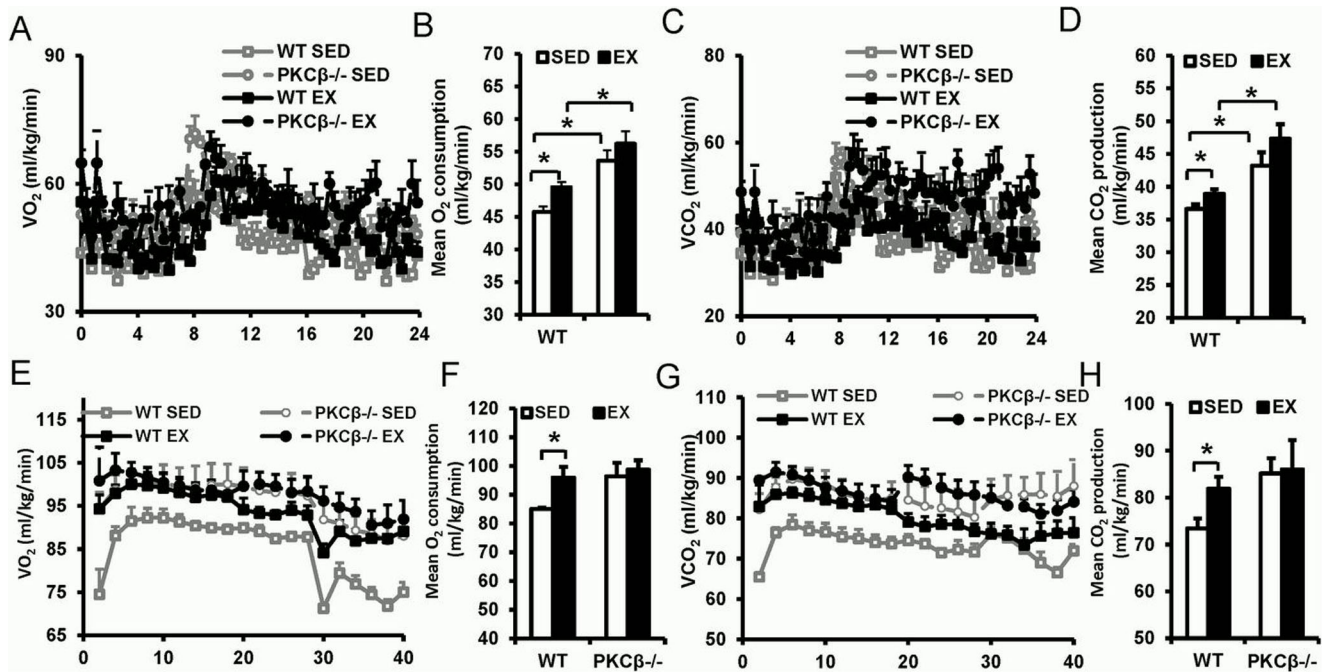


Figure 5. Metabolism increased after exercise in WT but not in PKC $\beta^{-/-}$ mice. A, Resting O₂ consumption over 24 hours. O₂ consumption of WT and PKC $\beta^{-/-}$ mice with or without exercise was measured in a resting state for 24 hours using a computer-controlled, Comprehensive Lab Animal Monitoring System (CLAMS). B, Average resting O₂ consumption in WT and PKC $\beta^{-/-}$ mice with or without exercise. C, Resting CO₂ production over 24 hours. CO₂ production of WT and PKC $\beta^{-/-}$ mice with or without exercise was measured in a resting state for 24 hours at 22°C in presence of food and water using CLAMS. D, Average resting CO₂ production in WT and PKC $\beta^{-/-}$ mice with or without exercise. E, O₂ consumption with exercise intervention. O₂ consumption of WT and PKC $\beta^{-/-}$ mice with or without exercise was measured. F, Average exercise O₂ consumption in WT and PKC $\beta^{-/-}$ mice with or without exercise. G, CO₂ production with exercise intervention. CO₂ production of WT and PKC $\beta^{-/-}$ mice with or without exercise was measured. H, Average exercise CO₂ production in WT and PKC $\beta^{-/-}$ mice with or without exercise. WT, wild-type; EX, exercise; SED, sedentary; Data are expressed as mean \pm SEM; n = 5, *, P < 0.05. doi:10.1371/journal.pone.0081364.g005

masses of PKC $\beta^{-/-}$ mice were less than that of WT mice (Figures 3C & 3D)

Exercise improved insulin resistance via reducing PKC β

Upon glucose challenge, blood glucose levels in exercised PKC $\beta^{-/-}$ mice were significantly lower than those of other groups (AUC: WT SED 46.41 \pm 2.38 vs. WT EX 43.38 \pm 1.42 vs. PKC $\beta^{-/-}$ SED 41.62 \pm 3.70 vs. PKC $\beta^{-/-}$ EX 30.49 \pm 2.04, p < 0.05; Figures 4A & 4B). Interestingly, both ITT and HOMA-IR results showed the insulin sensitivity in sedentary WT mice was lower than that of other groups while no significant difference was observed among the rest of the groups (ITT AUC: WT SED 12.18 \pm 0.86 vs. WT EX 9.19 \pm 0.73 vs. PKC $\beta^{-/-}$ SED 9.11 \pm 0.81 vs. PKC $\beta^{-/-}$ EX 7.77 \pm 0.68, p < 0.05; HOMA-IR: WT SED 9.26 \pm 1.87 vs. WT EX 3.09 \pm 0.14 vs. PKC $\beta^{-/-}$ SED 4.47 \pm 1.13 vs. PKC $\beta^{-/-}$ EX 3.16 \pm 0.92, p < 0.05; Figure 4C–E). Plasma insulin and leptin levels of sedentary WT mice were higher than those of rest groups, while no significant difference between exercised and sedentary PKC $\beta^{-/-}$ mice was detected (Insulin: WT SED 0.97 \pm 0.07 ng/mL vs. WT EX 0.67 \pm 0.03 ng/mL vs. PKC $\beta^{-/-}$ SED 0.74 \pm 0.08 ng/mL vs. PKC $\beta^{-/-}$ EX 0.66 \pm 0.04 ng/mL, p < 0.05; Leptin: WT SED 306.5 \pm 9.9 ng/mL vs. WT EX 198.8 \pm 13.7 ng/mL vs. PKC $\beta^{-/-}$ SED 76.7 \pm 7.6 ng/mL vs. PKC $\beta^{-/-}$ EX 60.7 \pm 3.7 ng/mL, p < 0.05; Figures 4F & 4G). Similar plasma adiponectin levels were found among the four groups (Figure 4H). Collectively, these results demonstrated PKC β deficiency enhances insulin sensitivity with no further improvement by exercise, suggesting exercise-induced improvements in insulin resistance may involve PKC β -mediated pathways.

Exercise increased metabolic rate via decrease in PKC β

As shown in Figures 5A–D, exercise increased resting O₂ consumption and CO₂ production in WT mice, while it had no significant impact on metabolic rate of PKC $\beta^{-/-}$ mice. PKC $\beta^{-/-}$ mice had a higher O₂ consumption and CO₂ production than WT mice, regardless of exercise or sedentary (O₂ consumption: WT SED 45.77 \pm 0.87 mL/kg/min vs. WT EX 49.54 \pm 0.81 mL/kg/min vs. PKC $\beta^{-/-}$ SED 53.60 \pm 1.61 mL/kg/min vs. PKC $\beta^{-/-}$ EX 56.22 \pm 1.92 mL/kg/min, p < 0.05; CO₂ production: WT SED 36.62 \pm 0.67 mL/kg/min vs. WT EX 38.92 \pm 0.70 mL/kg/min vs. PKC $\beta^{-/-}$ SED 43.23 \pm 2.03 mL/kg/min vs. PKC $\beta^{-/-}$ EX 47.36 \pm 2.18 mL/kg/min, p < 0.05). Consistently, exercised WT mice had a higher metabolic rate than sedentary WT mice when mice run on treadmill. Comparable O₂ consumption and CO₂ production were detected in exercised and sedentary PKC $\beta^{-/-}$ mice when mice run on treadmill (O₂ consumption: WT SED 85.07 \pm 0.46 mL/kg/min vs. WT EX 95.97 \pm 3.73 mL/kg/min vs. PKC $\beta^{-/-}$ SED 96.39 \pm 4.74 mL/kg/min vs. PKC $\beta^{-/-}$ EX 98.72 \pm 3.23 mL/kg/min, p < 0.05; CO₂ production: WT SED 73.43 \pm 2.11 mL/kg/min vs. WT EX 81.92 \pm 2.49 mL/kg/min vs. PKC $\beta^{-/-}$ SED 85.16 \pm 3.22 mL/kg/min vs. PKC $\beta^{-/-}$ EX 86.02 \pm 6.22 mL/kg/min, p < 0.05; Figures 5E–H). These results indicated that exercise increases metabolic rate possibly through decreasing PKC β .

Both exercise and PKC β deficiency reduced HFD-induced mitochondrial defects in the skeletal muscle

As shown in Figure 6A, mitochondria from the muscle in exercised WT mice had a more clearly defined internal membrane

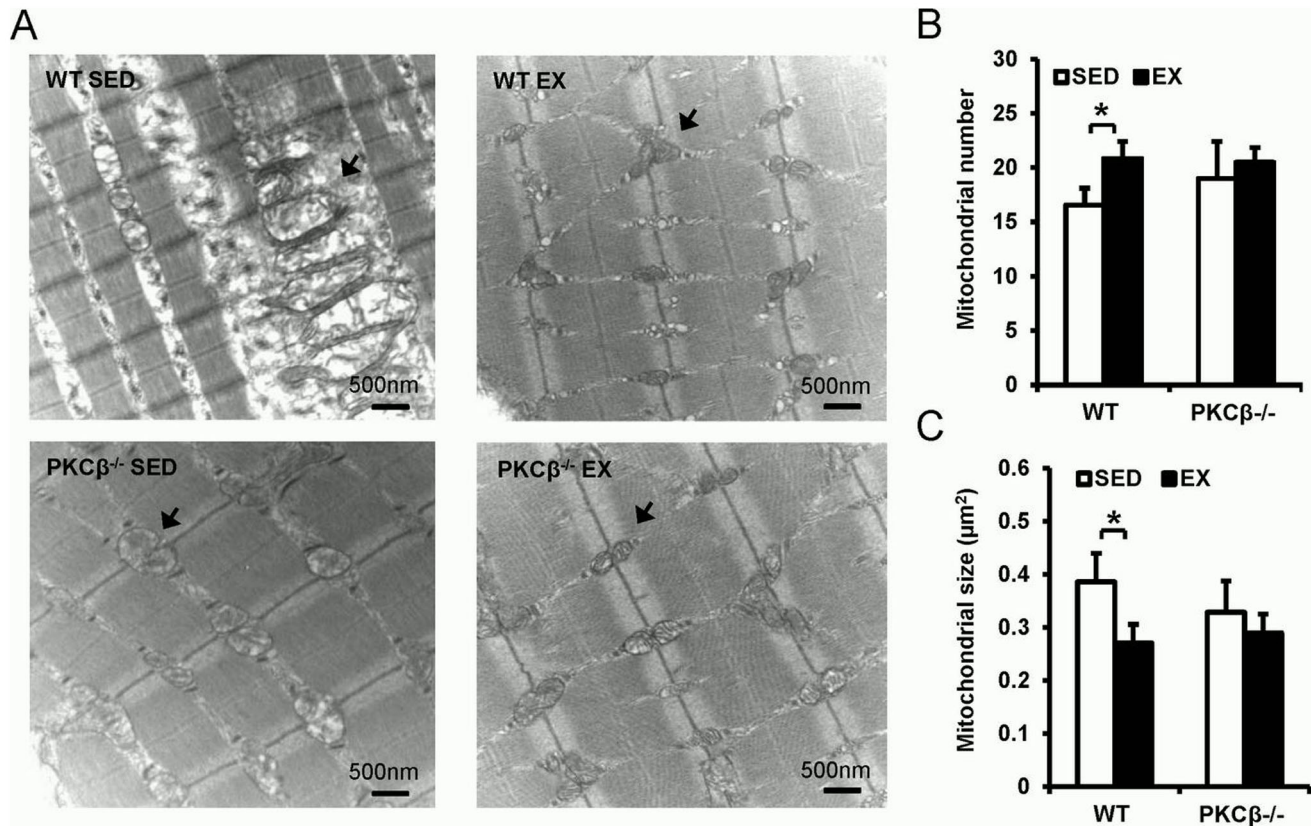


Figure 6. Both exercise and PKC β deficiency reduced high-fat diet-induced mitochondrial dysfunction in the skeletal muscle. A, Representative images of transmission electronic microscopy (TEM) show mitochondrial abnormality in the skeletal muscle of WT SED mice and reduced mitochondrial damage in the other 3 groups. Note the swollen and decreased matrix density of mitochondria in WT SED group. Bar: 500 nm; Magnification: 18500 \times ; The arrows indicate mitochondria. B, Mitochondrial number analysis shows that exercise increased mitochondrial number in WT but not in PKC $\beta^{-/-}$ mice. Six images per mice, 3 mice per group have been counted and quantified. C, Mitochondrial size analysis shows that mitochondrial size was significantly increased in WT SED group but not in the other 3 groups. Six images per mice, 3 mice per group have been counted and quantified. WT, wild-type; EX, exercise; SED, sedentary; Data are presented as mean \pm SEM; *, $P < 0.05$. doi:10.1371/journal.pone.0081364.g006

structure, including wider cristae, than those from sedentary WT mice. Mitochondrial number in the skeletal muscle of exercised WT mice was also increased compared with sedentary WT mice. However, similar mitochondrial numbers were found in exercised and sedentary PKC $\beta^{-/-}$ mice (WT SED 16.56 ± 1.55 vs. WT EX 20.85 ± 1.57 vs. PKC $\beta^{-/-}$ SED 19.00 ± 3.40 vs. PKC $\beta^{-/-}$ EX 20.50 ± 1.33 , $p < 0.05$; Figure 6B). Furthermore, the mitochondria from skeletal muscle of sedentary WT mice were found to be enlarged and disordered in comparison to that of exercised WT mice, while exercised and sedentary PKC $\beta^{-/-}$ mice had mitochondria with similar size to exercised WT mice (WT SED $0.39 \pm 0.05 \mu\text{m}^2$ vs. WT EX $0.27 \pm 0.04 \mu\text{m}^2$ vs. PKC $\beta^{-/-}$ SED $0.33 \pm 0.06 \mu\text{m}^2$ vs. PKC $\beta^{-/-}$ EX $0.29 \pm 0.03 \mu\text{m}^2$, $p < 0.05$; Figures 6A & 6C).

Eight weeks of exercise did not have significant impact on adipose tissue inflammation

Increased ratio of M1 (classically activated macrophages) versus M2 (alternatively activated macrophages) is suggested to be an important feature of adipose inflammation and insulin resistance [24]. To investigate the significance of exercise on adipose tissue inflammation, we detected the macrophage percentage and M1/M2 ratio (CD11b $^+$ CD11c $^+$ cell/CD11b $^+$ CD204 $^+$ cell) in stromal vascular fraction (SVF) of epididymal fat. As shown in Figures 7A & 7B, exercise slightly decreased macrophage numbers in

epididymal SVF from WT mice although not to a statistically significant level. Deficiency of PKC β reduced macrophage infiltration in epididymal fat (WT SED $40.13 \pm 4.29\%$ vs. WT EX $36.45 \pm 3.75\%$ vs. PKC $\beta^{-/-}$ SED $26.36 \pm 1.85\%$ vs. PKC $\beta^{-/-}$ EX $22.08 \pm 2.91\%$, $p < 0.05$). Mice from all the four groups had similar levels of classical and alternative macrophage activation (Figures 7C & 7D). In addition, the plasma levels of cytokines, including IL-6, IL-10, and MCP-1, were comparable among all the four groups (Figures 7E–G).

Both exercise and PKC β deficiency enhanced insulin signaling in peripheral tissues

As depicted in Figure 8A, higher activation of AKT was observed in the liver of exercised WT mice, exercised PKC $\beta^{-/-}$ mice, and sedentary PKC $\beta^{-/-}$ mice when compared with that of sedentary WT mice. Similar results were found in the skeletal muscle (Figure 8B).

Discussion

Obesity and diabetes are increasing worldwide at an alarming rate largely due to increased prosperity and sedentary life styles. Appropriate diets and exercise are two important interventions for both type 1 and type 2 diabetes. Characterizing the beneficial effects of exercise on insulin sensitivity has been the focus of the

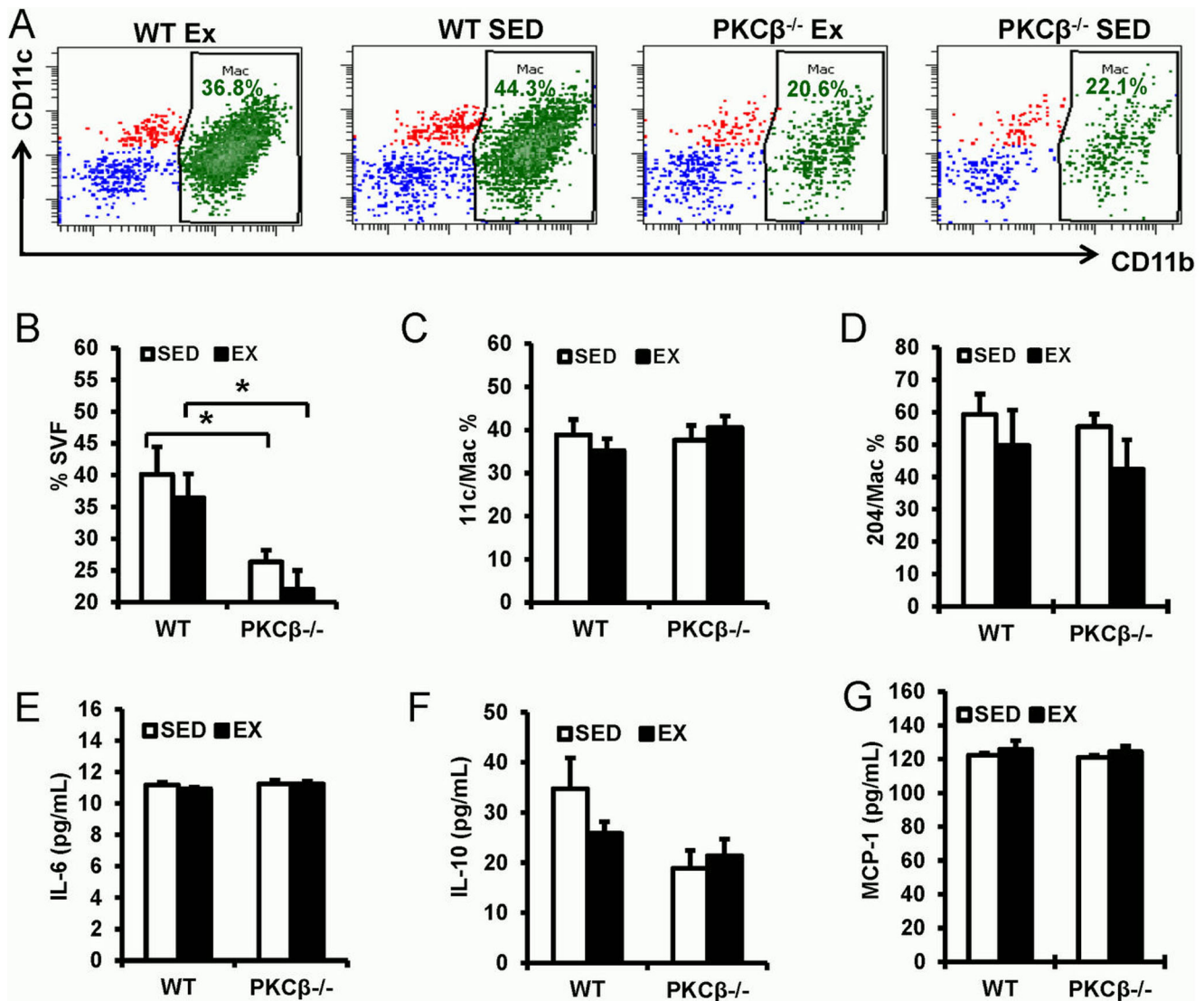


Figure 7. Effect of exercise and PKC β deficiency on adipose tissue inflammation and plasma cytokines. A–D, Adipose inflammation in WT and PKC $\beta^{-/-}$ mice with or without exercise. Exercise slightly reduced the infiltration of macrophages although not statistically significant. Macrophage percentage in SVF was significantly lower in PKC $\beta^{-/-}$ mice. Macrophages with M1 or M2 phenotype were not affected by exercise or PKC β deficiency. A, Representative activated flow cytometric plots of adipose tissue macrophages; B, flow statistical analyses of adipose tissue macrophages; C, Percentage of classically activated macrophages (M1, CD11b $^{+}$ CD11c $^{+}$) in adipose tissue macrophages; D, Percentage of alternatively activated macrophages (M2, CD11b $^{+}$ CD204 $^{+}$) in adipose tissue macrophages. E–G, Plasma cytokine levels in WT and PKC $\beta^{-/-}$ mice with or without exercise. Plasma isolated from exercise or sedentary mice was collected for inflammatory cytokine detection using BDTM Cytometric Bead Array Mouse Inflammation Kit. Exercise and PKC β deficiency do not affect the plasma level of IL-6, IL-10, and MCP-1. E, Plasma IL-6 level; F, Plasma IL-10 Level; G, Plasma MCP-1 Level. WT, wild-type; EX, exercise; SED, sedentary; Data are presented as mean \pm SEM; n = 5, *, $P < 0.05$. doi:10.1371/journal.pone.0081364.g007

research. Despite important advancements in recent years, the mechanistic basis behind how exercise improves insulin signaling is still poorly understood. In the current study, we discovered a potential mechanism by which exercise improved insulin sensitivity in obese subjects.

Expression levels of several isoforms of PKC were altered in skeletal muscle of obese or diabetic patients [5,6,7]. Furthermore, forced expression of PKC β in skeletal muscle caused a decrease in activation of IRS1 and glucose uptake [25]. However, the involvement of PKC proteins in exercise and exercise-mediated metabolic changes is unknown. By detecting different isoforms of PKC, we found that PKC β levels were significantly decreased in both skeletal muscle and liver,

suggesting that PKC β might be involved in exercise-mediated improvements in insulin sensitivity. Our study further demonstrated that PKC β deficiency, like exercise, could increase insulin sensitivity, as evidenced by improved ITT and HOMA-IR indices. Similarly, the activation of insulin downstream molecule AKT was enhanced by exercise and PKC β deficiency. Moreover, no significant differences in insulin sensitivity were observed between exercised and sedentary PKC $\beta^{-/-}$ mice, indicating that exercise possibly attenuates insulin resistance via the reduction of PKC β levels. However, the response of exercised WT mice to glucose challenge in the IPGTT assay was not as significant as that in the ITT, although the blood glucose levels at 0 and 120 min were lower than those of sedentary WT

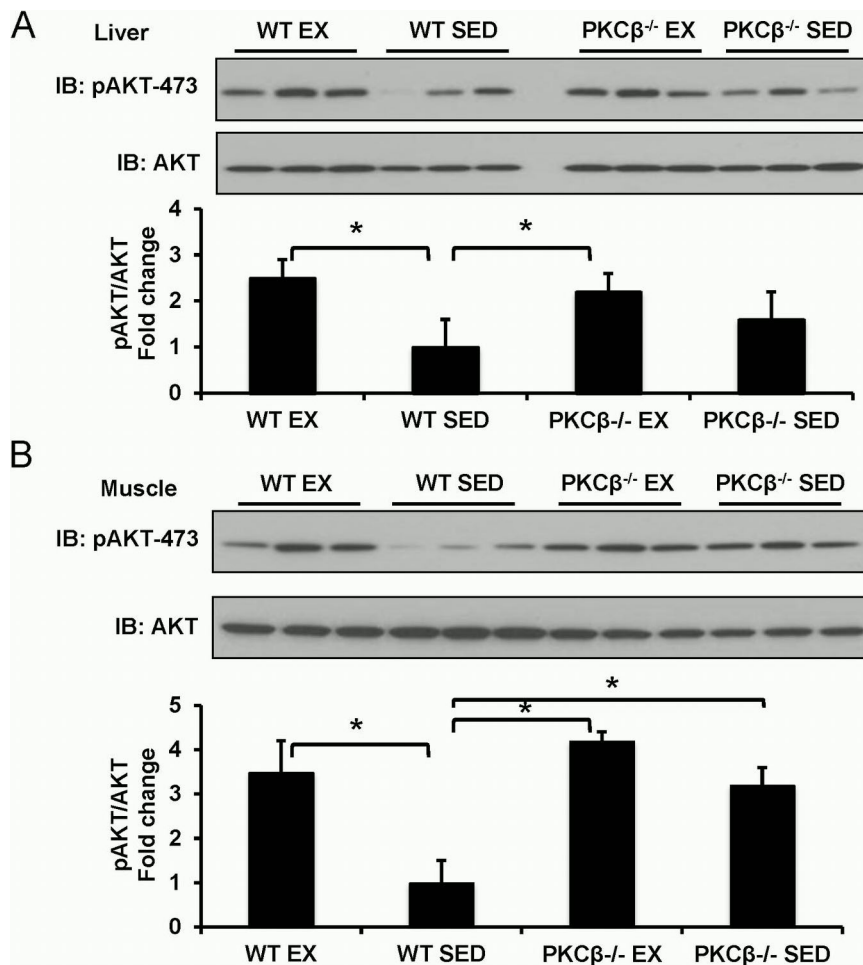


Figure 8. Effect of exercise and PKC β deficiency on insulin signaling. A, Insulin signal pathway in liver. Insulin downstream signal molecule AKT was activated after exercise in WT mice and had a less effect in PKC $\beta^{-/-}$ mice (Top panel, representative images; bottom panel, statistical analysis). *, $P < 0.05$. B, Insulin signal pathway in skeletal muscle. Insulin downstream signal molecule AKT was activated after exercise in WT mice and had a less effect in PKC $\beta^{-/-}$ mice (Top panel, representative images; bottom panel, statistical analysis). *, $P < 0.05$. WT, wild-type; EX, exercise; SED, sedentary; Data are presented as mean \pm SEM; $n = 3$, representative bands from one of 3 independent experiments. doi:10.1371/journal.pone.0081364.g008

mice. This result is not surprising given the dependence of the IPGTT response on a multitude of factors and this is likely caused by the compensation of insulin secretion, as plasma insulin levels of sedentary WT mice are significantly higher than those of exercised mice.

Consistent with the results reported by other groups [26,27], exercise lowered HFD-induced weight gain in WT mice. Exercised WT mice and PKC $\beta^{-/-}$ mice had a lower fat mass than sedentary WT mice. Of note, no significant effects of exercise on weight gain and visceral fat mass were observed in PKC $\beta^{-/-}$ mice. Compared to WT mice, PKC $\beta^{-/-}$ mice had lower weight gain in response to HFD feeding, despite comparable food and water intake. This result suggested the PKC β may affect energy usage. Metabolic measurements indicated that both exercise and PKC β deficiency enhanced metabolic rate, whereas no effects of exercise on metabolic rate were found in PKC $\beta^{-/-}$ mice. Despite less adiposity in PKC $\beta^{-/-}$ mice, we did not observe a significant difference in the level of plasma adiponectin between WT and PKC $\beta^{-/-}$ mice. This is probably caused by the fact that PKC β might have a suppressive effect on adiponectin expression. PKC β has been shown to induce the activation of JNK and subsequently suppress PPAR γ , a

transcription factor promoting the expression of adiponectin [28,29].

In addition to insulin sensitivity and metabolism, exercise has beneficial effects on HFD-induced mitochondrial dysfunction, which has been observed in skeletal muscle of both obese rodent and human subjects [30,31,32]. Both an HFD and a high-sucrose diet can induce reactive oxygen species production in skeletal muscle, which results in mitochondrial dysfunction [30]. In this study, exercise reduced HFD-induced mitochondrial defects in WT mice. We also observed an ameliorated mitochondrial abnormality induced by HFD (including a more clearly defined internal membrane structure, and appropriate size and number) in both exercised and sedentary PKC $\beta^{-/-}$ mice. It has been reported that adipose tissue inflammation contributes to the development of insulin resistance [33,34]. Recent studies suggest that long-term exercise reduces adipose inflammation via suppression of macrophage infiltration and a switch from M1 to M2 [35,36]. We detected a slight decrease in macrophage infiltration in exercised WT mice, although no statistical significance was found. We also failed to detect a switch from M1 to M2 in exercised mice, which was probably caused by a shorter exercise period and lower fat content (42%) than studied in previous reports [35,36]. However,

PKC β deficiency significantly decreased macrophage infiltration in adipose tissue. Considering the fact that an exercise-induced decrease in PKC β levels in skeletal muscle does not have a significant effect on adipose tissue macrophage infiltration, the decrease in adipose tissue macrophages in PKC $\beta^{-/-}$ mice likely resulted from a defect of PKC β in either adipose tissue or macrophages. In addition, exercise and PKC β deficiency did not affect the plasma levels of cytokines, including IL-6, IL-10, and MCP-1. These results suggested that 8 weeks of exercise may not have a significant effect on adipose inflammation and that exercise-induced improvements in insulin resistance may be unrelated to changes in adipose tissue macrophage content or function. Circulating level of IL-6 has been reported to be elevated after acute exercise. However, the effect of long-term exercise on IL-6 is controversial [37,38,39,40]. It's reported that no effect of long-term exercise on circulating IL-6 in elder adults, which is consistent with our observations [40,41].

Taken together, our results suggested that exercise decreased the expression of PKC β in both skeletal muscle and liver. By reducing PKC β expression, exercise improved HFD-induced metabolic dysfunction, including insulin resistance, fat accumulation, and mitochondrial dysfunction. Moreover, our findings that PKC $\beta^{-/-}$ mice have an increased basal metabolic rate suggest PKC β could be a potential target for treating obesity and insulin

resistance. However, the involvement of entire PKC family in exercise and insulin resistance might be complex due to the diversity of PKC isoforms and potential compensation among different isoforms. It requires further studies to investigate whether the other isoforms of PKC are involved in exercise-mediated improvement of insulin resistance.

Supporting Information

Figure S1 Exercise regimen. 4-week-old male WT and PKC $\beta^{-/-}$ mice were fed a HFD for 16 weeks. At the age of 12 weeks, the mice were randomly assigned into 4 groups: WT exercise (WT EX); WT sedentary (WT SED); PKC $\beta^{-/-}$ exercise (PKC $\beta^{-/-}$ EX); PKC $\beta^{-/-}$ sedentary (PKC $\beta^{-/-}$ SED). Mice in EX group were exercise-trained on a motorized treadmill at a speed of 15 m/min, 40 min/day, 5 days/week for 8 weeks. Mice in SED group were put in the treadmill without running 40 min/day, 5 days/week for 8 weeks. (TIFF)

Author Contributions

Conceived and designed the experiments: KM QS. Performed the experiments: XR JZ XX BJ SM ZB TYW. Analyzed the data: WH SA. Wrote the paper: XR. contributed discussion: MP SR.

References

- Hu FB (2011) Globalization of diabetes: the role of diet, lifestyle, and genes. *Diabetes Care* 34: 1249–1257.
- Whiting DR, Guariguata L, Weil C, Shaw J (2011) IDF diabetes atlas: global estimates of the prevalence of diabetes for 2011 and 2030. *Diabetes Res Clin Pract* 94: 311–321.
- Steinberg SF (2008) Structural basis of protein kinase C isoform function. *Physiol Rev* 88: 1341–1378.
- Webb BL, Hirst SJ, Giembycz MA (2000) Protein kinase C isoenzymes: a review of their structure, regulation and role in regulating airways smooth muscle tone and mitogenesis. *Br J Pharmacol* 130: 1433–1452.
- Itani SI, Zhou Q, Pories WJ, MacDonald KG, Dohm GL (2000) Involvement of protein kinase C in human skeletal muscle insulin resistance and obesity. *Diabetes* 49: 1353–1358.
- Cooper DR, Watson JE, Dao ML (1993) Decreased expression of protein kinase-C alpha, beta, and epsilon in soleus muscle of Zucker obese (fa/fa) rats. *Endocrinology* 133: 2241–2247.
- Itani SI, Pories WJ, MacDonald KG, Dohm GL (2001) Increased protein kinase C theta in skeletal muscle of diabetic patients. *Metabolism* 50: 553–557.
- Geraldes P, King GL (2010) Activation of protein kinase C isoforms and its impact on diabetic complications. *Circ Res* 106: 1319–1331.
- PKC-DRS Study Group (2005) The effect of ruboxistaurin on visual loss in patients with moderately severe to very severe nonproliferative diabetic retinopathy: initial results of the Protein Kinase C beta Inhibitor Diabetic Retinopathy Study (PKC-DRS) multicenter randomized clinical trial. *Diabetes* 54: 2188–2197.
- Tuttle KR, Bakris GL, Toto RD, McGill JB, Hu K, et al. (2005) The effect of ruboxistaurin on nephropathy in type 2 diabetes. *Diabetes Care* 28: 2686–2690.
- Huang W, Bansode RR, Bal NC, Mehta M, Mehta KD (2012) Protein kinase Cbeta deficiency attenuates obesity syndrome of ob/ob mice by promoting white adipose tissue remodeling. *J Lipid Res* 53: 368–378.
- Huang W, Bansode R, Mehta M, Mehta KD (2009) Loss of protein kinase Cbeta function protects mice against diet-induced obesity and development of hepatic steatosis and insulin resistance. *Hepatology* 49: 1525–1536.
- Goldstein MS, Mullick V, Huddleston B, Levine R (1953) Action of muscular work on transfer of sugars across cell barriers; comparison with action of insulin. *Am J Physiol* 173: 212–216.
- Devlin JT, Hirshman M, Horton ED, Horton ES (1987) Enhanced peripheral and splanchnic insulin sensitivity in NIDDM men after single bout of exercise. *Diabetes* 36: 434–439.
- Perseghin G, Price TB, Petersen KF, Roden M, Cline GW, et al. (1996) Increased glucose transport-phosphorylation and muscle glycogen synthesis after exercise training in insulin-resistant subjects. *N Engl J Med* 335: 1357–1362.
- Schenk S, Horowitz JF (2007) Acute exercise increases triglyceride synthesis in skeletal muscle and prevents fatty acid-induced insulin resistance. *J Clin Invest* 117: 1690–1698.
- Goodyear LJ, Kahn BB (1998) Exercise, glucose transport, and insulin sensitivity. *Annu Rev Med* 49: 235–261.
- Leitges M, Schmedt C, Guinamard R, Davoust J, Schaal S, et al. (1996) Immunodeficiency in protein kinase cbeta-deficient mice. *Science* 273: 788–791.
- Xu X, Ying Z, Cai M, Xu Z, Li Y, et al. (2011) Exercise ameliorates high-fat diet-induced metabolic and vascular dysfunction, and increases adipocyte progenitor cell population in brown adipose tissue. *Am J Physiol Regul Integr Comp Physiol* 300: R1115–R1125.
- Zhong J, Rao X, Deilius J, Braunstein Z, Narula V, et al. (2012) A Potential Role for Dendritic Cell/Macrophage-Expressing DPP4 in Obesity-Induced Visceral Inflammation. *Diabetes*.
- Xu X, Rao X, Wang TY, Jiang SY, Ying Z, et al. (2012) Effect of co-exposure to nickel and particulate matter on insulin resistance and mitochondrial dysfunction in a mouse model. *Part Fibre Toxicol* 9: 40.
- Ishizaka N, Ishizaka Y, Toda E, Nagai R, Yamakado M (2005) Association between serum uric acid, metabolic syndrome, and carotid atherosclerosis in Japanese individuals. *Arterioscler Thromb Vasc Biol* 25: 1038–1044.
- Bal NC, Maurya SK, Sopariwala DH, Sahoo SK, Gupta SC, et al. (2012) Sarcolipin is a newly identified regulator of muscle-based thermogenesis in mammals. *Nat Med* 18: 1575–1579.
- Sun S, Ji Y, Kersten S, Qi L (2012) Mechanisms of inflammatory responses in obese adipose tissue. *Annu Rev Nutr* 32: 261–286.
- Hennige AM, Heni M, Machann J, Staiger H, Sartorius T, et al. (2010) Enforced expression of protein kinase C in skeletal muscle causes physical inactivity, fatty liver and insulin resistance in the brain. *J Cell Mol Med* 14: 903–913.
- Krawczewski Carhuatanta KA, Demuro G, Tschop MH, Pfluger PT, Benoit SC, et al. (2011) Voluntary exercise improves high-fat diet-induced leptin resistance independent of adiposity. *Endocrinology* 152: 2655–2664.
- Bhattacharya A, Rahman MM, Sun D, Lawrence R, Mejia W, et al. (2005) The combination of dietary conjugated linoleic acid and treadmill exercise lowers gain in body fat mass and enhances lean body mass in high fat-fed male Balb/C mice. *J Nutr* 135: 1124–1130.
- Liu M, Liu F (2010) Transcriptional and post-translational regulation of adiponectin. *Biochem J* 425: 41–52.
- He W, Barak Y, Hevener A, Olson P, Liao D, et al. (2003) Adipose-specific peroxisome proliferator-activated receptor gamma knockout causes insulin resistance in fat and liver but not in muscle. *Proc Natl Acad Sci U S A* 100: 15712–15717.
- Bonnard C, Durand A, Peyrol S, Chanseaux E, Chauvin MA, et al. (2008) Mitochondrial dysfunction results from oxidative stress in the skeletal muscle of diet-induced insulin-resistant mice. *J Clin Invest* 118: 789–800.
- Kelley DE, He J, Menshikova EV, Ritov VB (2002) Dysfunction of mitochondria in human skeletal muscle in type 2 diabetes. *Diabetes* 51: 2944–2950.
- Kim JA, Wei Y, Sowers JR (2008) Role of mitochondrial dysfunction in insulin resistance. *Circ Res* 102: 401–414.
- Xu H, Barnes GT, Yang Q, Tan G, Yang D, et al. (2003) Chronic inflammation in fat plays a crucial role in the development of obesity-related insulin resistance. *J Clin Invest* 112: 1821–1830.
- Shoelson SE, Lee J, Goldfine AB (2006) Inflammation and insulin resistance. *J Clin Invest* 116: 1793–1801.

35. Bruun JM, Helge JW, Richelsen B, Stallknecht B (2006) Diet and exercise reduce low-grade inflammation and macrophage infiltration in adipose tissue but not in skeletal muscle in severely obese subjects. *Am J Physiol Endocrinol Metab* 290: E961–967.
36. Kawanishi N, Yano H, Yokogawa Y, Suzuki K (2010) Exercise training inhibits inflammation in adipose tissue via both suppression of macrophage infiltration and acceleration of phenotypic switching from M1 to M2 macrophages in high-fat-diet-induced obese mice. *Exerc Immunol Rev* 16: 105–118.
37. Oberbach A, Lehmann S, Kirsch K, Krist J, Sonnabend M, et al. (2008) Long-term exercise training decreases interleukin-6 (IL-6) serum levels in subjects with impaired glucose tolerance: effect of the -174G/C variant in IL-6 gene. *Eur J Endocrinol* 159: 129–136.
38. Nicklas BJ, Hsu FC, Brinkley TJ, Church T, Goodpaster BH, et al. (2008) Exercise training and plasma C-reactive protein and interleukin-6 in elderly people. *J Am Geriatr Soc* 56: 2045–2052.
39. Rall LC, Roubenoff R, Cannon JG, Abad LW, Dinarello CA, et al. (1996) Effects of progressive resistance training on immune response in aging and chronic inflammation. *Med Sci Sports Exerc* 28: 1356–1365.
40. Niebauer J, Clark AL, Webb-Peploe KM, Coats AJ (2005) Exercise training in chronic heart failure: effects on pro-inflammatory markers. *Eur J Heart Fail* 7: 189–193.
41. Moon MK, Cho BJ, Lee YJ, Choi SH, Lim S, et al. (2012) The effects of chronic exercise on the inflammatory cytokines interleukin-6 and tumor necrosis factor- α are different with age. *Appl Physiol Nutr Metab* 37: 631–636.