



New distributional records of the Samana least gecko (*Sphaerodactylus samanensis*, Cochran, 1932) with comments on its morphological variation and conservation status

Germán Chávez^{1,2}, Miguel A. Landestoy T³, Gail S. Ross⁴ and Joaquín A. Ugarte-Núñez⁵

¹ Instituto Peruano de Herpetología, Lima, Perú

² División de Herpetología, CORBIDI, Lima, Perú

³ Escuela de Biología, Universidad Autónoma de Santo Domingo, Santo Domingo, Dominican Republic

⁴ Independent Researcher, Elko, NV, USA

⁵ Knight Piésold Consulting, Lima, Peru

ABSTRACT

We report here five new localities across the distribution of the lizard *Sphaerodactylus samanensis*, extending its current geographic range to the west, in the Cordillera Central of Hispaniola. We also report phenotypic variation in the color pattern and scutellation on throat and pelvic regions of males from both eastern and western populations, which is described below. Furthermore, based on these new data, we confirm that the species is not fitting in its current IUCN category, and in consequence propose updating its conservation status.

Subjects Biodiversity, Biogeography, Conservation Biology, Ecology, Zoology

Keywords New localities, Geographic range, Phenotypic variation, IUCN category, Conservation status

Submitted 5 August 2020
Accepted 31 October 2020
Published 11 January 2021

Corresponding author
Joaquín A. Ugarte-Núñez,
jugarte@knightpiesold.com,
joaquarte@msn.com

Academic editor
Richard Schuster

Additional Information and
Declarations can be found on
page 10

DOI 10.7717/peerj.10404

© Copyright
2021 Chávez et al.

Distributed under
Creative Commons CC-BY 4.0

OPEN ACCESS

INTRODUCTION

Lizards of the genus *Sphaerodactylus* (107 recognized species, *Uetz, Freed & Hosek, 2020*), have diversified remarkably on Caribbean islands, and occur in Central and Northern South America and in the Pacific Island of Cocos (*Hass, 1991; Henderson & Powell, 2009; Hedges et al., 2019; Hedges, 2020*). This is a clade of small geckos (geckolet) containing also one of the smallest amniote vertebrates in the world with a maximum snout-vent length of 18 mm (*Hedges & Thomas, 2001*). Likewise, the largest species of this genus reaches up to a maximum of 39 mm (*Barbour, 1914; Schwartz & Garrido, 1985; Fong & Diaz, 2004; Griffin et al., 2018*).

The diversity of these geckos is one of the most highest among the herpetofauna in the Antilles (*Scantlebury et al., 2011*). Nonetheless, nearly 20% of the species are known only for the type locality (*Meiri et al., 2017*) and several others for a small number of localities (*Hedges, 1996; Powell & Inchaustegui, 2009; Schwartz, 1970; Schwartz & Henderson, 1991*). Among them, *Sphaerodactylus samanensis* is a species previously reported at a few places

near to the type locality, along the southern side of the Samana Bay, Dominican Republic with an elevation range from 0 to 181 m.a.s.l. ([Schwartz & Henderson, 1991](#); [Thomas & Hedges, 1993](#); [Landestoy, Incháustegui & Hedges, 2016](#)). Because its restricted distribution range and small extent of occurrence (100 km²), *S. samanensis* is currently classified as a Critically Endangered species by both the IUCN Red List (2020), and the Dominican Republic's Red List of threatened species ([Ministerio del Medio Ambiente y Recursos Naturales de la República Dominicana, 2019](#)). According to the records, this species inhabits the northeastern edge of the island ([Fig. 1](#)) alongside Cordillera Oriental, a low mountain chain with Miocene Karst terrain ([Bowin, 1966](#); [Bowin, 1975](#)).

The recent discovery of an individual of *Sphaerodactylus samanensis* in the surroundings of Pueblo Viejo Mine (PVM) by one of the authors (JU) encouraged us to perform new field surveys which resulted in the collection of this species at five new localities in central and eastern Dominican Republic. Our findings indicate that this species has a wider distribution than previously known, a finding relevant to its conservation status.

Methods

Study area

We conducted fieldwork at six sites ([Fig. 1](#)): (1) Caño Hondo (Los Haitises National Park), at the surroundings of the type locality and inside of its distribution range ([Landestoy, Incháustegui & Hedges, 2016](#)), (2) Cueva Casa Grande (western edge of the aforementioned park), and (3) Batey Piedra, all of them on the eastern edge of the Dominican Republic; and (4) Chacuey Abajo, (5) Cueva de Sanabe (inside Aniana Vargas National Park), and (6) Pueblo Viejo Mine (PVM), these last three on the Cordillera Central to the west. Eastern sites are placed on the northern slopes of the Cordillera Oriental, in the Ombrophile Rainforest ([Hager & Zanoni, 1993](#)), which is adjacent to the Samana Bay and goes along the Yuna River basin. The habitat here is a secondary forest, where trees, mainly *Anthoxylum* spp, *Cecropia* spp, *Chrysophyllum* spp, *Dendropanax* spp, and *Guarea* spp, reach up to 30 m in height. Also, some climber plants of the genus *Aristolochia* spp, *Cissus* spp, *Entada* spp, and *Macdafaenia* spp, and members of Orchidaceae and Poaceae family are present. The ground is densely covered by wet leaf litter and organic material, as well as scattered karst-rock clusters. Sites on the Cordillera Central were located on the easternmost border of the mountain ridge where streams flow down to the Yuna River and eventually reach the Atlantic Ocean. The landscape mainly features farms and small patches of tropical secondary rainforest with trees of the genus *Anthoxylum* spp and *Cecropia* spp reaching 35 m in height. The ground is covered partially in wet leaf litter and organic material, as well as karst-rock clustered areas. The highest altitude reached in our study is 257 m.a.s.l. in the Central Cordillera, with the lowest spot at sea level along the Samana Bay.

Fieldwork

We carried out three field trips under permission number 004080 issued by the Dominican Republic's Ministry of Environment and Natural Resources (Ministerio de Medio Ambiente y Recursos Naturales - MIMARENA). Specimens were collected between August 2018 and May 2019 during diurnal surveys. We took coordinates with a personal navigator (Garmin Map 64s) and described habitat characteristics at each collection site. Every collected

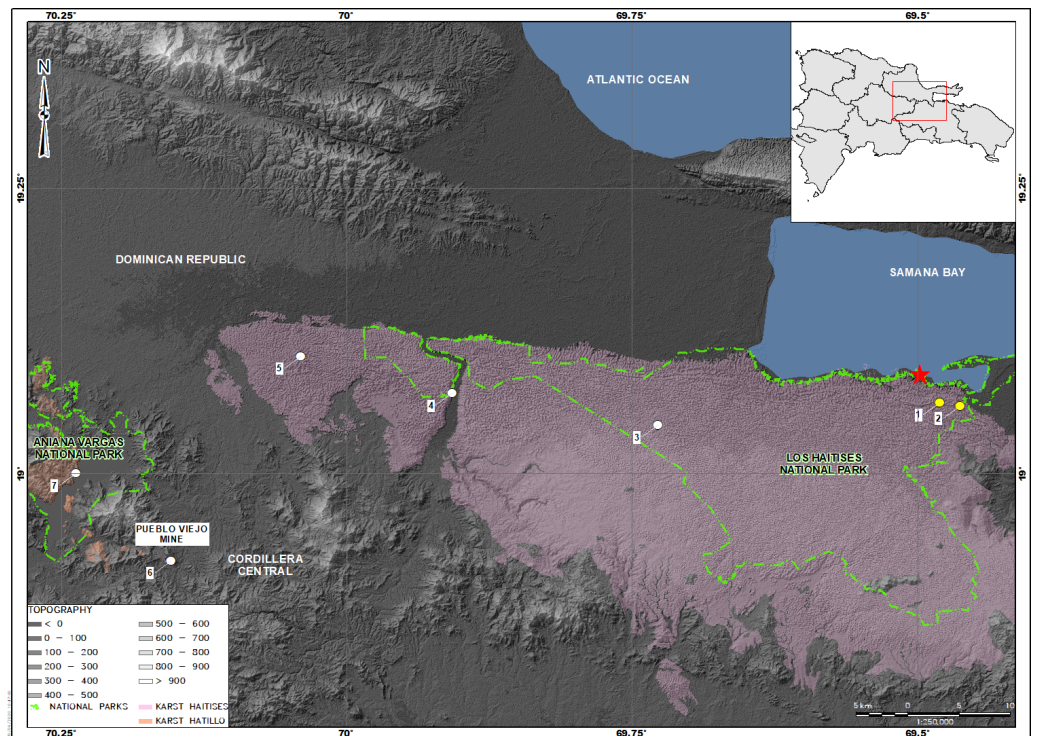


Figure 1 Map showing the distribution of *Sphaerodactylus samanensis*. Type locality is indicated by a red star. Localities with previous records are in yellow circles (taken from [Thomas & Hedges, 1993](#); and [Landestoy, Incháustegui & Hedges, 2016](#)) and new collecting sites are in white circles.

Full-size DOI: [10.7717/peerj.10404/fig-1](https://doi.org/10.7717/peerj.10404/fig-1)

specimen was photographed, measured, fixed with 95% ethanol and then stored in 70% ethanol. All the specimens were deposited in the herpetology collection of the Museo Nacional de Historia Natural Profesor Eugenio de Jesús Marcano (MNHNSD) in Santo Domingo, Dominican Republic.

Morphological revision

We euthanized the specimens in the field with Lidocaine 10%, fixed with 95% ethanol and then stored in 70% ethanol. We used a digital calliper to measure snout-vent length (SVL) of individuals to the nearest tenth of a millimeter. Our scale counts follow [Thomas & Schwartz \(1966\)](#) and [Thomas, Hedges & Garrido \(1992\)](#) and consists in: (1) escutcheon patch length, we considered the maximum number of scales (anterior to posterior); (2) escutcheon width, we considered the maximum number of scales transversally across the patch (including extensions onto thighs); and (3) escutcheon total scales, we considered all scales on the pelvic scutcheon. In order to support our observations, we added two more scale counts: (1) number of gular scales in contact with the first infralabial, here we considered all adjacent scales (including postmentals) to the first infralabial scale; and (2) number of scales per dorsal band, we considered the maximum number of pigmented scale rows covered by a dorsal band in a longitudinal count. Specimens were sexed by examining the sexually dimorphic color pattern and the gonads to confirm the presence of

hemipenes. We used photographs taken in the field by ML to describe the coloration in life of the specimens. Also, we followed [Köhler \(2012\)](#) to name the colors in our description. In addition, we follow taxonomy established by [Poe \(2013\)](#) which unlike ([Köhler et al., 2019](#)), regards *Anolis* as a valid genus for Dactyloid lizards from Hispaniola.

Data analysis

We estimated the occurrence of this species based on our field measurements of the extension of Karst (where we observed *Sphaerodactylus samanensis*), additionally supported by the estimation of the area of Karst in contact with them, through the data previously reported by [Servicio Geológico Nacional \(2010\)](#). Geographic data and map designing were drawn in ArcGIS version 10.3. Additionally, we follow [IUCN \(2001\)](#) defining: (1) Extent of occurrence (EOO) and (2) Area of occupancy (AOO).

RESULTS

We observed this species mostly under Karst rocks and out of the surroundings of the type locality for the first time (specimens collected per locality are detailed in [Table 1](#)). Subsequently, we are confirming its occurrence in the Cordillera Central and adding five localities to its currently known occurrence ([Fig. 1](#)). This extends its geographic range by 82.2 km to the northwest. All individuals were observed by day, under rocks in habitat mixed between karst-rock clusters and tropical forest, with bushes and trees approaching 30 m tall, ground covered in leaf-litter and rocks covered with moss, lichens, ferns and other epiphytes. Additionally, we recorded two other geckolets: *Sphaerodactylus darlingtoni* and *S. difficilis* in sympatry with *S. samanensis*. Other sympatric lizards recorded during surveys were *Celestus sepsoides*, *C. stenurus*, *Anolis cybotes*, and *A. distichus*

All individuals of *S. samanensis* agree with the original description ([Cochran, 1932](#)) bearing a combination of the following characters: a moderately short snout, a large rostral scale with a median groove, a medium-sized superciliar spine, a large third supralabial exceeding the center of the eye, imbricate-keeled dorsal scales and an orange head in males. Nevertheless, we noted some phenotypic variation between *S. samanensis* individuals from the surroundings of the type locality (Caño Hondo) and nearby eastern places (Cueva Casa Grande and Batey Piedra), and the western populations (Chacuey Abajo, Cueva de Sanabe, and PVM) (See [Fig. 2](#)). The eastern individuals have 2.5–5.5 (average = 4.1, SD = 0.8) gular scales in contact with first infralabial instead of 4.5–7 (average = 5.1, SD = 0.6) in western individuals ($p < 0.001$) (See [Fig. 3](#)), and a lower total number of pelvic scutcheon scales ranging from 25–32 scales (average = 28.4, SD = 2.5) instead of 30–39 scales (average = 35.7, SD = 2.9) in western specimens ($p < 0.001$). Eastern populations also differ in coloration by bearing dorsal bands and scapular ocelli in females and most males, which are absent in males of western samples ([Fig. 2](#)). Eastern females have 3–4 dorsal bands vs 4–5 in western females ($p < 0.001$), and wider dorsal bands covering 3–7 dorsal scales (average = 5, SD = 1.2) instead of the thin dorsal bands of western females covering only 3 dorsal scales (average = 3, SD = 0; $p < 0.001$). Further details on measurements, coloration and scutellation are provided in [Table 2](#).

Table 1 Voucher codes of *Sphaerodactylus samanensis*'s specimens collected at six localities of the Dominican Republic in this study.

Locality	Province	Coordinates (lat, lon)	Altitude (m)	Specimens voucher	
				Males	Females
Caño Hondo (Los Haitises National Park)	Hato Mayor	19.05894, -69.4633	44	MNHNSD 23.3715 -16, 23.3718	MNHNSD 23.3717, 23.3719 -20, 23.3722, 23.3893
Cueva Casa Grande	Monte Plata	19.04214, -69.72787	225	MNHNSD 23.3723	MNHNSD 23.3724 -26, 23.3894
Batey Piedra	Sanchez Ramirez	19.06997, -69.90815	35	MNHNSD 23.3895 -96, 23.3899	MNHNSD 23.3729 -31, 23.3897 -98, 23.3900 -02
Chacuey Bajo	Sanchez Ramirez	19.10689, -70.04149	115	MNHNSD 23.3733 -35, 23.3905	MNHNSD 23.3736, 23.3903 -04, 23.3906 -08
Pueblo Viejo Mine	Sanchez Ramirez	18.92348, -70.15423	195	MNHNSD 23.3699, 23.3706 -07, 23.3909	MNHNSD 23.3697 -98, 23.3701 -05, 23.3910 -14
Cueva de Sanabe (Aniana Vargas National Park)	Sanchez Ramirez	19.00004, -70.23809	257	MNHNSD 23.3713	MNHNSD 23.3712

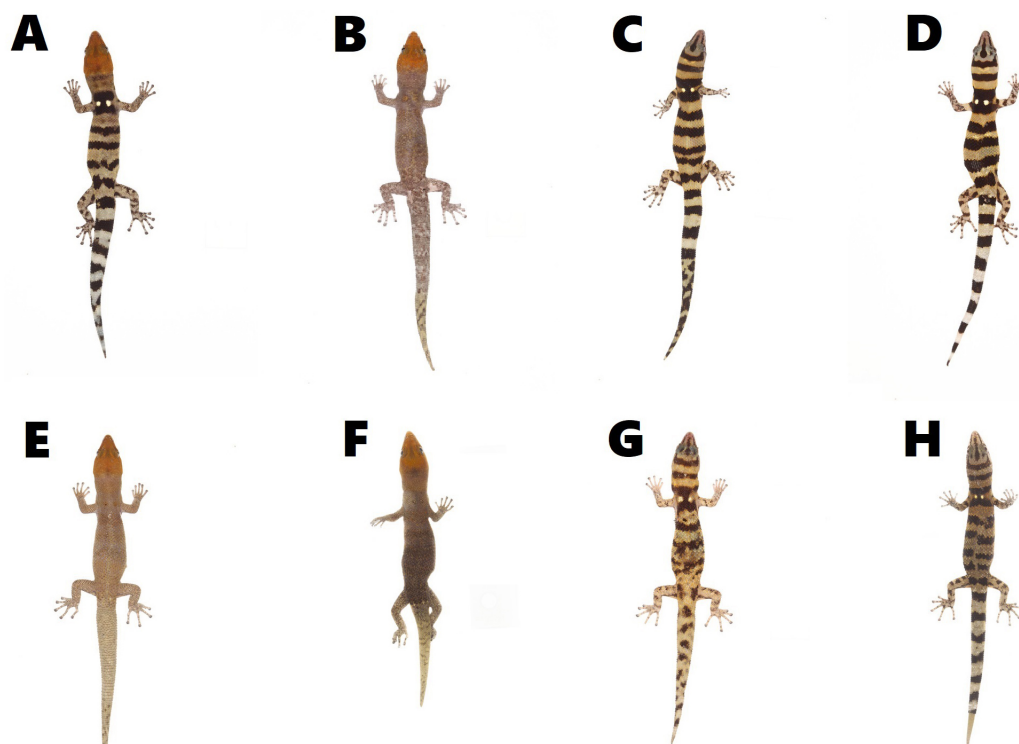


Figure 2 Color pattern variation in *Sphaerodactylus samanensis* between Eastern and Western specimens. Eastern males (A) MNHNSD 23.3718 (SVL = 26.3 mm), (B) MNHNSD 23.3723 (SVL = 28.6 mm), and females (C) MNHNSD 23.3717 (SVL = 27.8 mm); (D) MNHNSD 23.3719 (SVL = 27.9 mm); and Western males (E) MNHNSD 23.3733 (SVL = 27.5 mm), (D) MNHNSD 23.3713 (SVL = 24.8 mm), and females (E) MNHNSD 23.3736 (SVL = 27 mm), (F) MNHNSD 23.3712 (SVL = 26.9 mm). Photographs by Miguel A. Landestoy T.

Full-size  DOI: 10.7717/peerj.10404/fig-2

DISCUSSION

Our results update the distribution of *Sphaerodactylus samanensis* which now range from the region of the type locality (Boca del Infierno) in the Samana Bay (Cochran, 1932) and surrounding areas (Thomas & Hedges, 1993; Landestoy, Incháustegui & Hedges, 2016) to the Cordillera Central (Fig. 1), an east–west airline distance of 82.2 km. Therefore, the distribution of this gecko is now only exceeded by those of *S. copei*, *S. darlingtoni*, *S. difficilis*, and *S. elegans* (Schwartz & Henderson, 1991; Hedges, 2020), species previously recognized as widely spread on Hispaniola (Hass, 1991; Schwartz & Henderson, 1991). We also report the maximum altitude so far recorded for this species: 257 m. a. s. l. exceeding by 200 m former records reported by Cochran (1932) and Landestoy, Incháustegui & Hedges (2016). These novel geographic data exceed those formerly known for this species confirming that it is not a short-ranged species but rather a widely distributed lineage that could be distributed even further. Additionally, an ongoing phylogenetic analysis of *Sphaerodactylus* using molecular data (B. Hedges, 2019, unpublished data) has found that population differentiation between the sampled localities is less than 1.5% confirming that our samples belong to the same wide-ranging species.

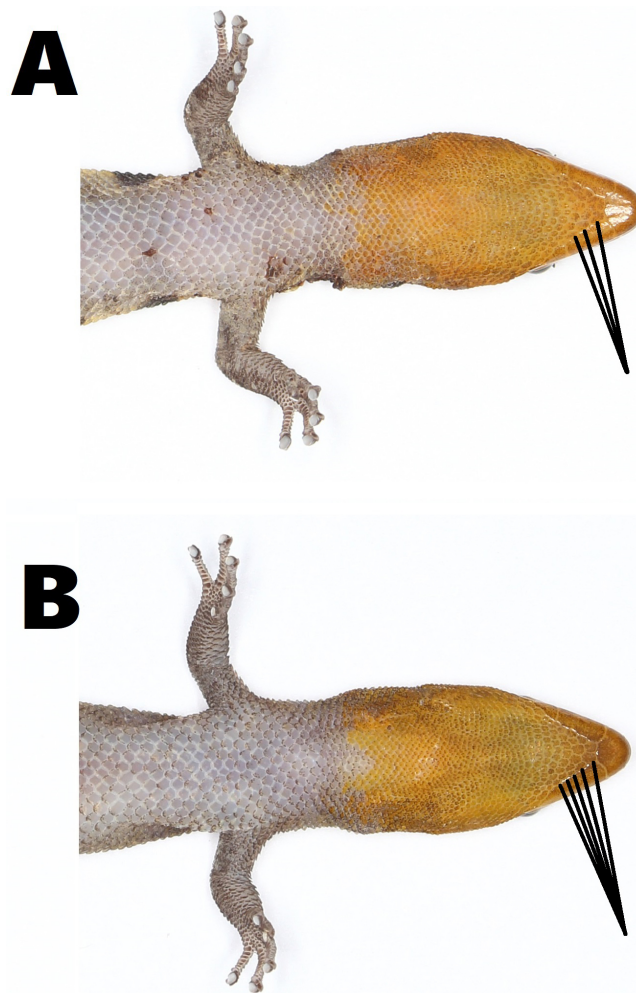


Figure 3 Variation in the size of gular scales (pointed with black lines) of *Sphaerodactylus samanensis*. (A) Eastern male (MNHNSD 23.3716) from Caño Hondo, (B) western male (MNHNSD 23.3734) from Chacuey Abajo. Photographs by Miguel A. Landestoy T.

Full-size  DOI: 10.7717/peerj.10404/fig-3

Since large geographic ranges are scarcely recorded in *Sphaerodactylus* lizards, phenotypic variation has been barely noted and subsequently poorly studied (*Schwartz, 1966; Dood Jr & Ortiz, 1984*). Here we provide for the first time evidence of differences between eastern (including type locality) populations ($n = 24$) and western populations ($n = 28$), mainly in color pattern and scutellation (*Table 2*). Measurements did not differ. In spite of scutellation mostly overlapping between eastern and western populations, gular scales are longer in eastern individuals, better noted in the proximal rows of the throat (including postmentals) which have contact with the first infralabial and are clearly smaller in western individuals (*Table 2, Fig. 3*). Likewise, the escutcheon plate in western males tends to contain more scales than those from eastern individuals. The differences between scutcheon width and scutcheon length are not significant ($p = 0.7$ and $p = 0.1$ respectively). This is because the difference does not depend on the width or length of the rows, but rather the number of

additional escutcheon scales surrounding the proximal edge of the escutcheon (Table 2). Concerning coloration, eastern individuals have 3–4 wide dorsal bands (each covering 3–7 dorsal scales) which are present in all females and some males (especially in males from the type locality); contrasting with western individuals which have 4–5 thin dorsal bands (each covering three dorsal scales) only present in females.

The geological history of the island of Hispaniola is influenced mainly by water incursions and plate movements occurring since the late Mesozoic and into the Cenozoic (Mann, Draper & Lewis, 1991; MacPhee & Iturralde-Vinent, 1994; Hedges, 1996; Iturralde-Vinent & MacPhee, 1999; Ricklefs & Bermingham, 2008; Daza et al., 2019). This likely originated the vicariance phenomenon in the Proto Antilles as well as the overwater dispersion and later (approximately during Mid-Tertiary *sensu* Hedges, 1996) divergence of lineages in vertebrate fauna on this island (Mann, Draper & Lewis, 1991; Hedges, Hass & Maxson, 1992; Hedges, 1996; Daza et al., 2019). These events could cause isolation (Hedges, 1996; Daza et al., 2019) and the subsequent geographic restriction of emergent taxa to small areas, explaining why very few *Sphaerodactylus* species had been able to spread widely on Hispaniola. Those geologic events could have influenced dispersion and also the evolution of phenotypic features of *Sphaerodactylus samanensis*. Certainly, the distribution of this species seems to follow a geologic pattern overlapping two ancient karst formations (Fig. 1): Los Haitises karst to the east and El Hatillo karst to the west, both structures raised in the Late Tertiary (Servicio Geológico Nacional, 2010). This would agree with the phenotypic variation reported here, which follows an east–west geographic pattern. Future research should target molecular analysis and the revision of new specimens to determine patterns in the phenotypic variation in *S. samanensis*.

Because of its restricted range of distribution and threats to its habitat, both the Dominican Republic and IUCN Red-Lists currently list *Sphaerodactylus samanensis* as a Critically Endangered species (IUCN 2020). Nevertheless, our findings demonstrate that the occurrence of *Sphaerodactylus samanensis* is wider than previously reported, with an estimated EOO of 500 km². We observed that *S. samanensis* inhabits karst rocks, in contrast to sympatric congeners such as *S. darlingtoni* and *S. difficilis* which are more often recorded in leaf litter usually on soil, reducing therefore its AOO within this range. We also suggest that loss of karst formations, in particular loss of tree cover within karst areas, could threaten some populations. Nonetheless, given its widened extent of occurrence, including its presence in protected areas (Los Haitises National Park to the east and Aniana Vargas National Park to the west), as well as the number of locations and mature individuals observed during fieldwork, we propose that the species be reclassified by the IUCN. Certainly, based on new information it would appear unlikely that the species would become extinct barring catastrophic climate events, however, continued destruction of karst habitat could become a future problem for the species, therefore we propose the category Near Threatened for *S. samanensis*.

CONCLUSIONS

Our report allows us to confirm that *Sphaerodactylus samanensis* is a widely distributed species that inhabits both eastern forests and Cordillera Central of Hispaniola Island,

Table 2 Color pattern, measurements (in mm) and scutellation of both eastern and western populations of *Sphaerodactylus samanensis*.

	Eastern Population		Western Population	
	Males (<i>n</i> = 7)	Females (<i>n</i> = 17)	Males (<i>n</i> = 9)	Females (<i>n</i> = 19)
Coloration of the Ocular Halo	Pearl/ Bluish pearl	Copper yellow	Pearl blue/Pearl	Pearl yellow/copper yellow
Scapular ocelli	Present/Absent	Present	Absent	Present
Coloration of dorsal bands	Dark Brown/ Yellowish brown	Dark brown	–	Dark brown
SVL (mm)	25.1–28.6 (26.8 ± 1.18)	14.6–28.1 (22.3 ± 5.0)	24.8–28.1 (26.7 ± 0.9)	21.0–29.7 (26.1 ± 2.1)
Number of head stripes	0–0 (0 ± 0.0)	2–4 (3.8 ± 0.4)	0–0 (0 ± 0)	2–4 (3.8 ± 0.4)
Number of neck bands	0–1 (0.5 ± 0.5)	1–1 (1.0 ± 0)	0–0 (0 ± 0)	1–2 (1.2 ± 0.4)
Escutcheon scales (length)	3–4 (3.2 ± 0.4)	0–0 (0 ± 0)	3–5 (3.7 ± 0.6)	0–0 (0 ± 0)
Escutcheon scales (wide)	10–13 (11.5 ± 0.9)	0–0 (0 ± 0)	10–17 (12.2 ± 2.0)	0–0 (0 ± 0)
Escutcheon scales (total)	25–32 (28.4 ± 2.5)	0–0 (0 ± 0)	30–39 (35.7 ± 2.9)	0–0 (0 ± 0)
Number of dorsal bands	0–4 (2.8 ± 1.9)	3–4 (3.1 ± 0.3)	0–0 (0 ± 0)	3–6 (4.3 ± 0.6)
Number of scales per dorsal band	0–6 (3.8 ± 1.8)	3–7 (5.0 ± 1.2)	0–0 (0 ± 0)	3–3 (3.0 ± 0)
Number of scales in contact with 2nd infralabial		2.5–5.5 (4.1 ± 0.8)		4.5–7 (5.1 ± 0.6)

also confirms its presence in five previously unreported localities. Likewise, we observed a phenotypic variation between eastern and western populations, however this is not consistent enough to consider them different taxon but rather this is evidence of an inter-population variation of *S. samanensis*. Moreover, our findings extend the area of occupancy of the species and lead us to suggest that its current IUCN category (CR) is not fitting with these novel data, instead we propose Near Threatened as a proper IUCN category.

ACKNOWLEDGEMENTS

We are grateful to all whom provided field work advice, as well as reviewers for their helpful comments. We specially thank to Isabel Garcia-Cuenca by her logistic support in the field. This work was possible to the value fieldwork of our teammates Robert Ortíz, Cristian Marte, Francis Ortíz, Yimell Corona, Francis Rodríguez, Rebeca Ramírez, and Pedro J. Araujo. JU thanks to Sinthya Mejia by her value feedback and Dila Valiente for designing the map.

ADDITIONAL INFORMATION AND DECLARATIONS

Funding

This work was supported by Barrick Pueblo Viejo (PO_3549_227678_0_US).

Grant Disclosures

The following grant information was disclosed by the authors:
Barrick Pueblo Viejo (PO_3549_227678_0_US).

Competing Interests

Joaquín A. Ugarte-Núñez is employed by Knight Piésold Consulting.

Author Contributions

- Germán Chávez performed the experiments, analyzed the data, prepared figures and/or tables, authored or reviewed drafts of the paper, and approved the final draft.
- Miguel A. Landestoy T performed the experiments, analyzed the data, prepared figures and/or tables, and approved the final draft.
- Gail S. Ross conceived and designed the experiments, performed the experiments, analyzed the data, authored or reviewed drafts of the paper, and approved the final draft.
- Joaquín A Ugarte-Núñez conceived and designed the experiments, performed the experiments, analyzed the data, prepared figures and/or tables, authored or reviewed drafts of the paper, and approved the final draft.

Animal Ethics

The following information was supplied relating to ethical approvals (i.e., approving body and any reference numbers):

Ministerio de Medio Ambiente y Recursos Naturales de República Dominicana approved the study (Autorización N° 004080).

Data Availability

The following information was supplied regarding data availability:

All the *Sphaerodactylus samanensis*'s specimens are stored in the Museo Nacional de Historia Natural "Prof. Eugenio de Jesús Marcano" in Santo Domingo, Dominican Republic. The codes of the specimens are available in a [Supplemental File](#).

Supplemental Information

Supplemental information for this article can be found online at <http://dx.doi.org/10.7717/peerj.10404#supplemental-information>.

REFERENCES

- Barbour T. 1914.** A contribution to the zoogeography of the West Indies, with special reference to Amphibians and Reptiles. *Memoirs of the Museum of Comparative Zoology* **44**(2):205–359.
- Bowin C. 1966.** Geology of the central dominican republic. A case history of part of an island arc. In: Hess H, ed. *Caribbean geological investigations*. Vol. 98. New York, USA: Geological Society of America, 11–84 DOI [10.1130/MEM98-p11](https://doi.org/10.1130/MEM98-p11).
- Bowin C. 1975.** The geology of Española. In: Naim A, Stehli F, eds. *The ocean basins and margins: the Gulf of Mexico and the Caribbean*. New York: Plenum Press, 501–552.
- Cochran DM. 1932.** Two new lizards from Hispaniola. *Proceedings of the Biological Society of Washington* **45**:183–188.
- Daza JD, Pinto BJ, Thomas R, Herrera-Martinez A, Scantlebury DP, Padilla-Garcia LF, Balaraman RP, Perry G, Gamble T. 2019.** The sprightly little *Sphaerodactylus*: systematic and Biogeography of the Puerto Rican dwarf geckos (Gekkota, Sphaerodactylidae). *Zootaxa* **4712**(2):151–201 DOI [10.11646/zootaxa.4712.2.1](https://doi.org/10.11646/zootaxa.4712.2.1).
- Dood Jr K, Ortiz PR. 1984.** Variation of dorsal pattern and scale counts in the Monito Gecko, *Sphaerodactylus micropithecus*. *Copeia* **3**:768–770.
- Fong A, Diaz LM. 2004.** Two new species of *Sphaerodactylus* (Sauria: Gekkonidae) from the southeastern coast of Cuba. *Solenodon* **4**:73–84.
- Griffin AH, Daza JD, Deboer JC, Bauer AM. 2018.** Developmental osteology of the parafrontal bones of the Sphaerodactylidae. *The Anatomical Record Advances in Integrative Anatomy and Evolutionary Biology* **301**(4):581–606 DOI [10.1002/ar.23749](https://doi.org/10.1002/ar.23749).
- Hager J, Zanoni TA. 1993.** La vegetación natural de la República Dominicana: una nueva clasificación. *Moscsoa* **7**:39–81.
- Hass CA. 1991.** Evolution and biogeography of West Indian *Sphaerodactylus* (Sauria: Gekkonidae): a molecular approach. *Journal of Zoology of the Zoological Society of London* **225**:525–561 DOI [10.1111/j.1469-7998.1991.tb04323.x](https://doi.org/10.1111/j.1469-7998.1991.tb04323.x).
- Hedges SB. 1996.** The origin of West Indian amphibians and reptiles. In: *Contributions to West Indian herpetology: a tribute to Albert Schwartz. Contribution to Herpetology, volume 2*, Ithaca: Society for the Study of Reptiles and Amphibians, 95–128.
- Hedges SB. 2020.** Caribherp: amphibians and reptiles of Caribbean Islands. Philadelphia, Pennsylvania. Available at <http://www.caribherp.org/> (accessed on 24 June 2020).

- Hedges SB, Hass CA, Maxson LR. 1992.** Caribbean biogeography: molecular evidence for dispersal in West Indian terrestrial vertebrates. *Proceedings of the National Academy of Sciences* **89**:1909–1913 DOI [10.1073/pnas.89.5.1909](https://doi.org/10.1073/pnas.89.5.1909).
- Hedges SB, Powell R, Henderson RW, Hanson S, Murphy JC. 2019.** Definition of the Caribbean Islands biogeographic region, with checklist and recommendations for standardized common names of amphibians and reptiles. *Caribbean Herpetology* **67**:1–53.
- Hedges SB, Thomas R. 2001.** At the lower size limit in amniote vertebrates: a new diminutive lizard from the West Indies. *Caribbean Journal of Science* **37**:168–173.
- Henderson RW, Powell R. 2009.** *Natural history of West Indian reptiles and amphibians*. Gainesville: University Press of Florida.
- Iturralde-Vinent MA, MacPhee RDE. 1999.** Paleogeography of the Caribbean region: implications for Cenozoic biogeography. *Bulletin of the American Museum of Natural History* **238**:1–95.
- IUCN. 2001.** IUCN Red List categories and criteria: Version 3.1. Prepared by IUCN Species Survival Commission. World Conservation Union, Gland, Switzerland and Cambridge, United Kingdom, ii + 30.
- Köhler G. 2012.** *Color catalogue for field biologists*. Offenbach: Herpeton.
- Köhler G, Zimmer C, McGrath K, Hedges SB. 2019.** Una revisión del género *Audantia* de la Hispaniola con descripción de cuatro especies nuevas (Reptilia: Squamata: Dactyloidae). *Novitates Caribaea* **0(14)**:1–104.
- Landestoy M, Incháustegui S, Hedges SB. 2016.** *Sphaerodactylus samanensis*. The IUCN Red List of threatened species: eT75605882A115490491. Available at <http://dx.doi.org/10.2305/IUCN.UK.2016-3.RLTS.T75605882A75607914.en>.
- MacPhee RDE, Iturralde-Vinent MA. 1994.** First Tertiary land mammal from Greater Antilles: an early Miocene sloth (Xenarthra: Megalonychidae) from Cuba. *American Museum Novitates* **3094**:1–13.
- Mann P, Draper G, Lewis JF. 1991.** An overview of the geologic and tectonic development of Hispaniola. In: Mann P, Draper G, Lewis JF, eds. *Geological and Tectonic Development of the North America-Caribbean Plate Boundary in Hispaniola*. Geological Society of America Special Papers. Vol. 262. 1–28 DOI [10.1130/SPE262-p1](https://doi.org/10.1130/SPE262-p1).
- Meiri S, Bauer AM, Allison A, Castro-Herrera F, Chirio L, Colli G, Das I, Doan TM, Glaw F, Grismer LL, Hoogmoed M, Kraus F, LeBreton M, Meirte D, Nagy ZT, Nogueira C, Oliver P, Pauwels OSG, Pincheira-Donoso D, Shea G, Sindaco R, Tallowin OJS, Torres-Carvajal O, Trape JF, Uetz P, Wagner P, Wang Y, Ziegler T, Roll U. 2017.** Extinct, obscure or imaginary: the lizard species with the smallest ranges. *Diversity and Distributions* **24**:262–273 DOI [10.1111/ddi.12678](https://doi.org/10.1111/ddi.12678).
- Ministerio del Medio Ambiente y Recursos Naturales de la República Dominicana. 2019.** Lista de especies de fauna en peligro de extinción, amenazadas o protegidas de la República Dominicana (lista roja). 33.
- Poe S. 2013.** 1986 Redux: New genera of anoles (Squamata: Dactyloidae) are unwarranted. *Zootaxa* **3626**:295–299.

- Powell R, Inchaustegui SJ. 2009.** Conservation of the Herpetofauna of the Dominican Republic. *Applied Herpetology* **6**:103–122 DOI [10.1163/157075409X427153](https://doi.org/10.1163/157075409X427153).
- Ricklefs R, Bermingham E. 2008.** The West Indies as a laboratory of biogeography and evolution. *Philosophical transactions of the Royal Society* **363**:2393–2413 DOI [10.1098/rstb.2007.2068](https://doi.org/10.1098/rstb.2007.2068).
- Scantlebury DP, Ng J, Landestoy M, Geneva A, Glor RE. 2011.** Notes on activity patterns of five species of *Sphaerodactylus* (Squamata: Sphaerodactylidae) from the Dominican Republic. *IRCF Reptiles and Amphibians* **18**:51–55.
- Schwartz A. 1966.** Geographic variation in *Sphaerodactylus notatus*. *Revista de Biología Tropical* **13**(2):161–185.
- Schwartz A. 1970.** A new species of Gecko (Gekkonidae, Sphaerodactylus) from Hispaniola. *Journal of Herpetology* **4**:63–67 DOI [10.2307/1562704](https://doi.org/10.2307/1562704).
- Schwartz A, Garrido OH. 1985.** The Cuban lizards of the genus *Sphaerodactylus* (Sauria, Gekkonidae). *Contributions in Biology and Geology of the Milwaukee Public Museum* **62**:1–67.
- Schwartz A, Henderson RW. 1991.** *Amphibians and reptiles of the West Indies*. Gainesville: University of Florida Press, 720.
- Servicio Geológico Nacional. 2010.** *Mapa Geológico de la República Dominicana*. Santo Domingo: Servicio Geológico Nacional de la República Dominicana, 40–59.
- Thomas R, Hedges SB. 1993.** A new banded *Sphaerodactylus* from eastern Hispaniola (Squamata: Gekkonidae). *Herpetologica* **49**(3):350–354.
- Thomas R, Hedges SB, Garrido OH. 1992.** Two new species of *Sphaerodactylus* from eastern Cuba (Squamata: Gekkonidae). *Herpetologica* **48**:358–367.
- Thomas R, Schwartz A. 1966.** *Sphaerodactylus* (Gekkonidae) in the greater Puerto Rico region. *Bulletin of the Florida State Museum, Biological Sciences* **10**:193–260.
- Uetz P, Freed P, Hosek J. 2020.** The reptile database. Available at <http://reptile-database.org> (accessed on 27 August 2020).