



Published in final edited form as:

Lab Invest. 2012 October ; 92(10): 1461–1471. doi:10.1038/labinvest.2012.104.

## Liver inflammation in a mouse model of Th1 hepatitis despite the absence of invariant NKT cells or the Th1 chemokine receptors CXCR3 and CCR5

James G. Cripps<sup>1</sup>, Stela Celaj<sup>1</sup>, Marie Burdick<sup>3</sup>, Robert M. Strieter<sup>3</sup>, and James D. Gorham<sup>1,2,+</sup>

<sup>1</sup>Department of Microbiology and Immunology, The Geisel School of Medicine at Dartmouth, Lebanon, NH 03756, USA

<sup>2</sup>Department of Pathology, The Geisel School of Medicine at Dartmouth, Lebanon, NH 03756 USA

<sup>3</sup>Department of Medicine, University of Virginia, Charlottesville, Virginia 22908 USA

### Abstract

The specific mechanisms that mediate CD4<sup>+</sup> T cell mediated liver injury have not been fully elucidated. CD4<sup>+</sup> invariant NKT (iNKT) cells are required for liver damage in some mouse models of hepatitis, while the chemokine receptors CXCR3 and CCR5 are considered dominant Th1 chemokine receptors involved in Th1 trafficking in inflammatory conditions. BALB/c-*Tgfb1*<sup>-/-</sup> mice spontaneously develop Th1 hepatitis. Here, we directly test the hypotheses that iNKT cells or the Th1 cell chemokine receptors CXCR3 and CCR5 are required for development of liver disease in *Tgfb1*<sup>-/-</sup> mice. *Tgfb1*<sup>-/-</sup> mouse livers exhibited significant increases in iNKT cells and in ligands for CXCR3 or CCR5. *Tgfb1*<sup>-/-</sup> mice were rendered deficient in iNKT cells, CXCR3, CCR5, or both CXCR3 and CCR5, by cross-breeding with appropriate knockout mice. *Tgfb1*<sup>-/-</sup> mice developed severe liver injury, even in the absence of functional CD1d/iNKT cells, CXCR3, CCR5, or both CXCR3 and CCR5. Liver CD4<sup>+</sup> T cells accumulated to high numbers, and spleen CD4<sup>+</sup> T cell numbers declined, regardless of the functionality of the CXCR3/CCR5 response pathways. Similarly, dendritic cells and macrophages accumulated in *Tgfb1*<sup>-/-</sup> livers even when CXCR3 and CCR5 were knocked out. Th1-associated cytokines (IFN- $\gamma$ , TNF- $\alpha$ , IL-2) and chemokines (CXCL9, CXCL10) were strongly over-expressed in *Tgfb1*<sup>-/-</sup> mice despite knockouts in CD1d, CXCR3, or CCR5. These studies indicate that the cellular and biochemical basis for CD4<sup>+</sup> T cell mediated injury in liver can be complex, with myriad pathways potentially involved.

---

Users may view, print, copy, download and text and data- mine the content in such documents, for the purposes of academic research, subject always to the full Conditions of use: [http://www.nature.com/authors/editorial\\_policies/license.html#terms](http://www.nature.com/authors/editorial_policies/license.html#terms)

\*Corresponding author: James D. Gorham [james.d.gorham@dartmouth.edu](mailto:james.d.gorham@dartmouth.edu).

## Introduction

### Autoimmune hepatitis

(AIH) and viral hepatitis are inflammatory liver diseases in which liver damage is dependent to a great extent upon the infiltration of liver by CD4<sup>+</sup> T cells producing the cytokine IFN- $\gamma$  [1–3], also known as Th1 cells. In these hepatitides, Th1 CD4<sup>+</sup> T cell production of IFN- $\gamma$  strongly correlates with disease progression and liver injury [2, 4]. The use of laboratory mice has advanced the understanding of the pathogenesis of inflammatory liver diseases, as findings in laboratory mice can delineate possible mechanisms by which T cells may participate.

Liver CD4<sup>+</sup> T cells include both conventional effector CD4<sup>+</sup> T helper cells, and a class of non-conventional CD4<sup>+</sup> T cells known as invariant natural killer T (iNKT) cells. iNKT cells are of particular interest in hepatitis as they are abundant in murine liver, representing between 5 and 40% of T cells found in this organ, depending upon the mouse strain [5]. iNKT cells are characterized by expression of a specific TCR $\alpha$  chain (V $\alpha$ 14-J $\alpha$ 18) paired with a limited set of TCR $\beta$  chains. iNKT cells recognize and are activated by glycolipids presented by the MHCII-like molecule, CD1d. Upon stimulation, iNKT cells rapidly produce copious amounts of cytokines, including IFN- $\gamma$  [6, 7].

The involvement of iNKT cells in inflammatory liver disease was first clearly demonstrated in an experimental model of T cell mediated liver damage, in which Concanavalin A (ConA) is administered to mice to induce hepatitis. ConA is a T cell lectin with predilection for the liver, in which it binds efficiently to liver sinusoidal endothelial cells [8]. Administration of ConA rapidly results in T cell activation in the liver, destruction of endothelium, and the development of acute liver injury [9, 10]. It was demonstrated over a decade ago that iNKT cells are among the first subset of cells to respond to ConA, resulting in rapid release of TNF- $\alpha$  and expression of the hepatotoxic molecule FasL [11, 12]. Mice rendered unable to generate iNKT cells fail to develop liver damage following ConA administration [11, 12], demonstrating that iNKT cells are necessary for liver damage in this system. Additional studies show that acute activation of iNKT cells, via delivery of iNKT ligand  $\alpha$ -galactosylceramide, rapidly results in cytokine release and acute liver injury in mice [13]. Thus iNKT cell activation can be both necessary and sufficient to induce liver damage in mice. The ConA model is by far the most commonly used model of CD4<sup>+</sup> T cell mediated hepatitis in research, due in large part to the relative technical accessibility of this model to most research laboratories. It is critically important, however, that observations reported in the ConA model be rigorously tested in other model systems of CD4<sup>+</sup> T cell mediated liver damage. Such approaches help distinguish inflammatory pathways common to immune mediated liver injury from those specific to particular inciting insults or events.

T cells migrate into sites of inflammation through the activity of chemokines. CXCR3 and CCR5 are the two principal chemokine response pathways that mediate Th1 migration in inflamed tissue, and evidence suggests that chemokines that bind to these two receptors can mediate lymphocyte migration into inflamed liver [14]. In AIH patients, serum levels of IP-10 (a ligand for CXCR3) positively correlate with AST levels and with several other disease parameters [15, 16], and expression levels of CCL4 and CCL5 (which bind CCR5)

are up-regulated in AIH [17]. Liver infiltrating lymphocytes isolated from HCV-infected livers express high levels of CCR5 and CXCR3 [18]; chemokines binding to CCR5 are primarily restricted to the portal tract, and CXCR3 chemokines are up-regulated in the sinusoidal endothelium [18]. Consistent with a role for CXCR3 in inflammatory liver disease, CXCR3 ligand expression is enhanced in HCV compared to normal liver [19]. Whether one or both of these chemokine receptor pathways is critical for influx of T helper cells into liver in all types of T cell mediated hepatitis needs to be rigorously tested. This is particularly important to evaluate as interest in chemokine receptor antagonism as a therapeutic intervention in liver inflammation is gaining traction [20].

Transforming growth factor-beta (TGF- $\beta$ ) is a cytokine with potent and pleiotropic effects on the immune response. TGF- $\beta$  powerfully inhibits T cell proliferation and cytokine production, antagonizes T helper cell differentiation to the Th1 and Th2 effector states, and promotes the development of regulatory T cells. TGF- $\beta$  inhibits the inflammatory activities of macrophages and neutrophils, and exerts powerful regulatory effects on B cells and dendritic cells (reviewed in [21]). BALB/c-background mice homozygous for a null mutation in the gene encoding TGF- $\beta$ 1 (BALB/c-*Tgfb1*<sup>-/-</sup> mice) develop an aggressive Th1 CD4<sup>+</sup> T cell mediated necroinflammatory liver damage, succumbing within ~2 weeks post-natally [22], and serve as a tractable model of spontaneously developing Th1 mediated hepatocellular damage. We have previously demonstrated the pathologic importance of Th1 CD4<sup>+</sup> T cells to liver damage in this model system, as mice rendered deficient either in CD4<sup>+</sup> T cells or IFN- $\gamma$  exhibit little to no detectable liver damage [23, 24]. Plasma IFN- $\gamma$  levels are pathologically high in BALB/c-*Tgfb1*<sup>-/-</sup> mice and correlate with the extent of liver damage [24]. Moreover, CD4<sup>+</sup> T cells produce copious amounts of IFN- $\gamma$  and are the only source of detectable IFN- $\gamma$  production in these mice [24]. There is no detectable pathologic role for either CD8<sup>+</sup> T cells or for the death receptor protein *fas* [24], and the production of IL-17 is undetectable (JGC and JDG, unpublished). In this study, we further the understanding of the pathogenesis of liver damage in BALB/c-*Tgfb1*<sup>-/-</sup> mice by evaluating whether liver damage and inflammation are dependent upon either invariant natural killer T (iNKT) cells, or on CXCR3 or CCR5, the two principal chemokine receptor pathways that target Th1 cells to sites of inflammation.

## Methods and Materials

### Mice

All mice were maintained at Dartmouth Medical School according to Association for Assessment and Accreditation of Laboratory Animal Care practices. BALB/c-*Tgfb1*<sup>-/-</sup> mice were generated as previously described [22]. *Cxcr3*<sup>-/-</sup> mice on the BALBc background were previously described [25, 26]. *Cd1d*<sup>-/-</sup> mice on the BALB/c background and *Ccr5*<sup>-/-</sup> mice on the C57Bl/6 background were purchased from Jackson Laboratory (Bar Harbor, ME). C57Bl/6-*Ccr5*<sup>-/-</sup> mice were backcrossed onto the BALB/c background in 5 generations using a marker assisted selection (i.e. “speed congenic”) approach. Mouse genomes were assessed at the DartMouse™ Speed Congenic Core Facility at Dartmouth Medical School. DartMouse uses the Illumina, Inc. (San Diego, CA) GoldenGate Genotyping Assay to interrogate 1449 SNPs spread throughout the genome. Genetic background was determined

to be >99% BALB/c after the final back-cross generation. Double-knockout and triple-knockout mice were generated by cross-breeding and PCR screening for the particular knockout alleles.

### **Cell Isolation and Counts**

Mononuclear cells (MNC) were obtained from livers as previously described [27]. Briefly, livers were perfused with sterile PBS, disaggregated between frosted microscope slides and filtered twice through 70 micron filters. Pellets were subjected to a 35% Percoll gradient, then RBC lysis, to obtain a single cell suspension. Splenocytes were isolated through mechanical disruption. Cell enumeration was by trypan blue exclusion using a hemacytometer.

### **FACS**

Single cell suspensions were Fc blocked for 15 minutes at 4°C followed by washing in PBS. Cells were then stained with anti-CD4, anti-CD3, anti-CD11b, anti-CD11c, anti-F4/80 (all from eBioscience) and/or CD1d tetramer loaded with PBS057 (NIH Tetramer Facility) or appropriate isotype control antibody or unloaded tetramer for 30 minutes at 4°C, then washed and analyzed by FACS. Stained cells were analyzed on either an Accuri C6 Cytometer or BD FACS Calibur and data analyzed by CFlow or FlowJo analysis software.

### **Liver lysate and plasma analysis by Luminex and ELISA**

Protein was extracted from livers by high-speed homogenization of perfused livers in Lysate Buffer (0.25M Sucrose, 10mM Tris, pH 7.4, Protease Inhibitors) at 120 mg (wet weight)/ml. Lysates were spun at 10,000 RCF, and supernatants collected and stored at -80°C. Clarified supernatants, or, in some experiments, plasma, were used in Multiplex Luminex analyses performed by the Immune Monitoring Laboratory at Dartmouth Medical School or in ELISA (R&D Systems), by the manufacturer's established protocol.

### **Histology and AST**

Livers were perfused and fixed in PBS-buffered formalin, and prepared for H&E staining as described [22]. Serum AST enzyme activity was measured as described [22].

### **qRT-PCR**

Following cardiac perfusion, total livers were homogenized in TRIzol, and RNA extracted and purified. Real-time PCR (qRT-PCR) was carried out as previously described with gene specific primers, and amplicons detected using SYBR green [28].

### **Statistics**

Statistical significance was determined by the Student's t or Mann-Whitney tests, utilizing GraphPad Prism4 software. A P-value less than or equal to 0.05 was considered to be significant. A P-value between 0.05 and 0.10 was considered to be approaching statistical significance.

## Results

### T cell mediated liver damage in *Tgfb1*<sup>-/-</sup> mice is extensive even in the absence of CD1d-restricted iNKT cells

We previously showed that CD4<sup>+</sup> T cell depletion abrogates liver damage in BALB/c-*Tgfb1*<sup>-/-</sup> mice [23, 24]. We used an anti-CD4 monoclonal antibody to deplete CD4<sup>+</sup> T cells. This strategy targets not only conventional CD4<sup>+</sup> T cells but also iNKT cells, which likewise express CD4. Therefore, whether iNKT cells contribute to liver damage in BALB/c-*Tgfb1*<sup>-/-</sup> mice is currently unknown. Mice homozygous for a null allele in the *Cd1d* gene do not develop iNKT cells and are a useful experimental tool to assess the requirement for iNKT cells [29].

CD1d tetramer analysis readily identified iNKT cells in livers from BALB/c-*Tgfb1*<sup>-/-</sup> mice (Fig. 1A). At post-natal day 11, when liver injury reaches peak severity [22], iNKT cells were present at higher frequency in *Tgfb1*<sup>-/-</sup> liver than in *Tgfb1*<sup>+/-</sup> littermate control liver (Fig. 1B). To specifically test the requirement for iNKT cells, we bred CD1d-deficient mice with *Tgfb1*<sup>-/-</sup> mice to obtain mice deficient in both TGF-β1 and CD1d/iNKT cells, and then assessed liver damage at post-natal day 11. Despite an absence of CD1d/iNKT, double knockout mice developed quite marked liver damage, measured either quantitatively by AST (Fig. 1C), or qualitatively by histology (Fig. 2A–C). Indeed, AST was actually somewhat higher in BALB/c-*Cd1d*<sup>-/-</sup>*Tgfb1*<sup>-/-</sup> mice (Fig. 1C), suggesting that iNKT cells may have a suppressor function in this model system. Regardless, these results indicate that, distinct from the ConA model, CD1d restricted invariant iNKT cells are not required for the development of liver damage in *Tgfb1*<sup>-/-</sup> mice.

### Massive CD4<sup>+</sup> T cell accumulation and liver damage develop in the absence of a functional CXCR3 chemokine pathway

Next, we explored mechanisms by which CD4<sup>+</sup> T cells might accumulate in livers of *Tgfb1*<sup>-/-</sup> mice, assessing the CXCR3 pathway. Previously, we showed using gene expression analysis of whole liver RNA that *Tgfb1*<sup>-/-</sup> livers exhibit greater than 10-fold up-regulation of CXCR3-binding chemokines such as CXCL9 [28]. Using Luminex analysis of liver lysates, we confirmed at the level of protein that CXCL9 was over-expressed in *Tgfb1*<sup>-/-</sup> liver compared with healthy littermate control *Tgfb1*<sup>+/-</sup> liver (Fig. 3A). *Tgfb1*<sup>-/-</sup> livers also exhibited enhanced *Cxcr3* mRNA expression (data not shown). To directly test a requirement for CXCR3 in T cell recruitment and liver damage, *Cxcr3*<sup>-/-</sup>*Tgfb1*<sup>-/-</sup> double knockout mice were generated through interbreeding of single knockout mice. Despite the absence of CXCR3, *Cxcr3*<sup>-/-</sup>*Tgfb1*<sup>-/-</sup> livers exhibited a large CD4<sup>+</sup> T cell lymphocytosis compared with littermate *Cxcr3*<sup>-/-</sup>*Tgfb1*<sup>+/-</sup> livers; specifically, livers from *Cxcr3*<sup>-/-</sup>*Tgfb1*<sup>-/-</sup> mice exhibited no difference in either the number (Fig. 3B) or percentage (data not shown) of infiltrating CD4<sup>+</sup> T cells compared with CXCR3-intact *Tgfb1*<sup>-/-</sup> mice. Furthermore, liver injury was readily demonstrable in *Cxcr3*<sup>-/-</sup>*Tgfb1*<sup>-/-</sup> mice, as measured either by plasma AST (Fig. 4) or by histology (Fig. 2D). These results demonstrate that CXCR3 is required neither for CD4<sup>+</sup> T cell accumulation nor for subsequent liver damage.

### Liver damage develops when a functional CCR5 chemokine pathway is eliminated

We previously showed that several chemokines capable of binding to CCR5 are up-regulated greater than 10-fold in *Tgfb1*<sup>-/-</sup> liver, compared to heterozygous controls [28]. We verified at the protein level that the CCR5-binding chemokines CCL3, CCL4, and CCL5 are significantly over-expressed in *Tgfb1*<sup>-/-</sup> liver (Fig. 5). Similarly, *Tgfb1*<sup>-/-</sup> livers over-expressed mRNA encoding CCR5 (data not shown). *Ccr5*<sup>-/-</sup>*Tgfb1*<sup>-/-</sup> double knockout mice were generated through interbreeding of single knockout mice. *Ccr5*<sup>-/-</sup>*Tgfb1*<sup>-/-</sup> livers developed significant liver damage, indistinguishable from CCR5-intact *Tgfb1*<sup>-/-</sup> mice (Figs. 4, 2E).

### Concurrent elimination of both CXCR3 and CCR5 is permissive for liver CD4<sup>+</sup> T cell accumulation and hepatocellular damage, and for the accumulation of other immune cell types

To determine whether the two chemokine response pathways are redundant here, we generated *Tgfb1*<sup>-/-</sup> mice deficient for both CXCR3 and CCR5. Triple knockout *Cxcr3*<sup>-/-</sup>*Ccr5*<sup>-/-</sup>*Tgfb1*<sup>-/-</sup> mice nevertheless exhibited robust CD4<sup>+</sup> T cell liver lymphocytosis (Fig. 6A) as well as acute liver damage (Figs. 4, 2F) equivalent to those observed in CXCR3/CCR5-intact *Cxcr3*<sup>+/+</sup>*Ccr5*<sup>+/+</sup>*Tgfb1*<sup>-/-</sup> mice. In contrast to liver, CD4<sup>+</sup> T cell numbers dropped significantly in spleen, presumably due to their migration into other organs including liver. The reduction in splenic CD4<sup>+</sup> T cells was intact in triple knockout mice (Fig. 6B), indicating that CXCR3 and CCR5 are dispensable for this effect.

Next we assessed the accumulation of other immune cell types in liver when both CXCR3 and CCR5 are knocked out in *Tgfb1*<sup>-/-</sup> mice. Other cell types, including CD3<sup>+</sup> (total T) cells, CD11c<sup>+</sup> (dendritic) cells, CD11b<sup>+</sup> (myeloid) cells, and F4/80<sup>+</sup> (macrophage/Kupffer) cells accumulated in *Tgfb1*<sup>-/-</sup> livers compared with *TGFB1*<sup>+</sup> livers. As observed for CD4<sup>+</sup> T cells, the accumulation of these cell types did not require CXCR3/CCR5 (Fig. 7).

### The development of robust type 1 cytokine/chemokine inflammatory responses in *Tgfb1*<sup>-/-</sup> mice is independent of CD1d/NKT, CXCR3, and CCR5

*Tgfb1*<sup>-/-</sup> mice develop a strong type 1 inflammation with over-expression of Th1-associated cytokines such as IFN- $\gamma$ . We have previously shown that plasma IFN- $\gamma$  in *Tgfb1*<sup>-/-</sup> mice is derived entirely from the CD4<sup>+</sup> T cell compartment [24]. To determine if the over-production of type 1 cytokines is affected by CD1d/NKT or by the chemokine receptors, we measured plasma levels of various cytokines. Plasma from *Tgfb1*<sup>-/-</sup> mice had very high levels of IFN- $\gamma$ , as well as of the Th1-associated cytokines TNF- $\alpha$  and IL-2. High plasma levels of all three cytokines were observed in the double and triple knockout *Tgfb1*<sup>-/-</sup> mouse lines tested (Fig. 8), although IL-2 levels were not quite as high in *Tgfb1*<sup>-/-</sup> mice lacking CD1d. Thus, the development of a type 1 inflammatory response in *Tgfb1*<sup>-/-</sup> mice does not depend on CD1d/NKT, CXCR3, or CCR5.

Next we assessed chemokine expression levels. As observed for IFN- $\gamma$  itself, the IFN- $\gamma$ -induced CXCR3-binding chemokines CXCL9 and CXCL10 were overexpressed in *Tgfb1*<sup>-/-</sup> mice, and expression was not dependent on CD1d/NKT, CXCR3, or CCR5. The CC chemokines CCL2, CCL3, CCL4, and CCL5 were also overexpressed to greater or lesser

degrees in plasma from *Tgfb1*<sup>-/-</sup> mice, and overexpression was largely independent of CD1d/NKT, CXCR3, or CCR5. Closer inspection reveals some interesting interactions. For example, when CXCR3 was absent, CCL2 expression was exacerbated in *Tgfb1*<sup>-/-</sup> mice. Such exacerbation was itself CCR5 dependent, as seen in the CXCR3/CCR5 triple knockout *Tgfb1*<sup>-/-</sup> mice. By contrast, in triple knockout *Cxcr3*<sup>-/-</sup>*Ccr5*<sup>-/-</sup>*Tgfb1*<sup>-/-</sup> mice, but not in double knockout *Cxcr3*<sup>-/-</sup>*Ccr5*<sup>-/-</sup>*Tgfb1*<sup>-/-</sup> mice, the expression levels of CCL4 and CCL5 were higher compared with single knockout *Tgfb1*<sup>-/-</sup> mice. Interestingly, CXCL2 was not over expressed in *Tgfb1*<sup>-/-</sup> mice, but became so when both CXCR3 and TGF-β1 were knocked out. Finally, there was specificity to overexpression; that is, not all chemokines were overexpressed, since levels of CCL11 (Eotaxin) were not elevated in any of the single, double, or triple *Tgfb1*<sup>-/-</sup> knockout mouse lines (Fig. 9).

Finally, we examined a number of other cytokines. As for IFN-γ, some cytokines (G-CSF, IL-6, IL-10) were strongly overexpressed in *Tgfb1*<sup>-/-</sup> mice independent of CD1d/NKT or the chemokine receptors (Fig. 10A). Other cytokines (IL-1α, IL-1β, IL-5, M-CSF, IL-12 p40, IL-12 p70, IL-13) were overexpressed to lesser or greater degrees in *Tgfb1*<sup>-/-</sup> mice, but expression was exacerbated in *Tgfb1*<sup>-/-</sup> mice deficient in CXCR3, but not in *Tgfb1*<sup>-/-</sup> mice deficient in both CXCR3 and CCR5 (Fig. 10B). Not all cytokines were overexpressed in *Tgfb1*<sup>-/-</sup> mice: plasma GM-CSF and IL-15 expression levels were similar in *Tgfb1*<sup>-/-</sup> mice and *Tgfb1*<sup>+</sup> mice (Fig. 10C), and levels of LIX and of IL-9 were lower in *Tgfb1*<sup>-/-</sup> mice (Fig. 10D).

## Discussion

This work demonstrates that T cell accumulation in liver and the development of liver injury can occur by distinct mechanisms in distinct models of acute CD4<sup>+</sup> T cell mediated liver inflammation and hepatocellular damage. For example, as opposed to the ConA model of CD4<sup>+</sup> T cell-mediated liver injury, hepatocellular damage in the BALB/c-*Tgfb1*<sup>-/-</sup> model does not require iNKT cells. In addition, importantly, a deficiency in both CXCR3 and CCR5 fails to alter CD4<sup>+</sup> T cell accumulation in the liver and subsequent necroinflammatory liver damage. Interestingly, though the ligands for these dominant Th1 chemokine receptors are substantially upregulated in diseased liver, they are not required for CD4<sup>+</sup> T cell migration and accumulation. Thus, at least in this model system, CD4<sup>+</sup> T cells can accumulate in inflamed livers independently of either of the traditional chemokine receptors responsible for Th1 cell movement into sites of inflammation.

iNKT cells are required for ConA induced liver damage in mice [11, 12], and it is suggested they play a role in PBC [30]. A recent study shows that deficiency of CD1d-restricted iNKT cells can prevent lethality and abrogate inflammation in an ROS-mediated liver damage model [31]. Inflammatory innate cell responses, proinflammatory cytokine expression, and hepatocellular death were all substantially decreased in CD1d deficient mice compared to control mice [31]. Similarly, another recent study demonstrated that deficiency of iNKT cells drastically decreased liver injury in a drug-induced liver damage model in mice [32]. Several studies support a requirement for iNKT cells in liver injury in the ConA induced model of hepatitis. Interestingly, IL-4 production by iNKT cells is necessary to upregulate granzyme B and FasL, required for liver injury [33]. By contrast, in BALB/c-*Tgfb1*<sup>-/-</sup> mice

the absence of CD1d-restricted iNKT cells did not alter disease parameters, suggesting that a conventional CD4<sup>+</sup> T cell population is responsible for liver damage in this model. Our results are consistent with data from AIH patients, in whom iNKT cells, similar to FoxP3-expressing regulatory T cells, may actually promote tolerance, rather than serve as an effector cell subset in liver damage [34].

Cell types other than T cells and iNKT cells can participate in liver damage in acute and chronic liver diseases. Neutrophils are the characteristic cellular component of acute liver injury, are prominent in alcoholic hepatitis, and may also participate in chronic liver diseases [35]. Moreover, neutrophils are necessary for the development of liver damage following ConA administration [36]. Close inspection of H&E-stained *Tgfb1*<sup>-/-</sup> liver sections reveals an abundance of myeloid cells that resemble neutrophils [27]. We thus considered the possibility that neutrophils are important for liver damage in *Tgfb1*<sup>-/-</sup> mice. To test this hypothesis, we attempted to deplete neutrophils from *Tgfb1*<sup>-/-</sup> mice using the myeloid specific monoclonal antibody Gr1. Despite the successful elimination of greater than 90% of myeloid cells, Gr1-injected *Tgfb1*<sup>-/-</sup> mice nevertheless developed robust liver damage similar to that of unmanipulated *Tgfb1*<sup>-/-</sup> mice (JGC and JDG, unpublished data). We conclude that, as for iNKT cells, neutrophils do not contribute to hepatocellular damage in this mouse model of hepatitis.

The involvement of chemokines in Th1 cell migration and accumulation in liver is well described in the literature. In addition, studies have detailed the roles of the inflammatory chemokines CXCR3 and CCR5 as the two dominant receptors for recruitment of Th1 cells into inflamed tissue [37–39]. Moreover, Th1 cells can utilize CXCR3 and/or CCR5 as the chemokine receptors responsible for migration and accumulation in the liver [14]. Notably, CXCR3 chemokine levels in HCV patients correlate with disease pathology [19]. Another study involving HCV patients proposed preferential T cell migration into liver architecture based on CCR5 and CXCR3 expression [18]. That CD4<sup>+</sup> T cell accumulation in liver in our model is unaffected by CXCR3 and CCR5 deficiency directly shows that other mechanisms can also mediate CD4<sup>+</sup> T cell accumulation in the liver in the setting of autoimmunity. Consistent with this, CXCR3 and CCR5 are not required for CD4<sup>+</sup> T cell accumulation in liver in a virally-induced hepatic steatosis model [40].

Mechanisms other than chemokines can participate in the accumulation of T cells in liver parenchyma. Intra-vital microscopy of livers in ConA-treated mice shows that Th1 cells located in the sinusoid or post-sinusoid venules preferentially utilize the integrin  $\alpha_4\beta_1$  for adhesion and accumulation in inflamed liver, since antibody neutralization of  $\alpha_4$  decreased CD4<sup>+</sup> T cell accumulation in the liver to basal levels [41]. Moreover, ConA treatment causes upregulation of VCAM-1 and P-selectin in areas of hepatic blood flow [41]. These studies should be interpreted with caution, as they involved in vitro Th1-skewed CD4<sup>+</sup> T cells injected via cannulation of the jugular vein. Whether in vitro skewed Th1 cells are phenotypically equivalent to endogenous Th1 cells is uncertain, as is the effect of the injection of a large bolus of T cells ( $10^7$ ). Finally, it is notable that significant splenomegaly is observable in BALB/c-*Tgfb1*<sup>-/-</sup> mice at postnatal day 11, accompanied by a decreased CD4<sup>+</sup> T cell density in spleen compared to wild-type mice [this study, and [23], that may be



explained by the migration of CD4<sup>+</sup> T cells from spleen to inflamed tissues such as liver. As shown here, the decrease in CD4<sup>+</sup> T cells in spleen is independent of CXCR3 and CCR5.

Numerous studies in human liver disease suggest the involvement of specific chemokine pathways in mediating T cell recruitment to the liver based on correlation of chemokine levels and disease parameters [15, 16, 19]. The current study suggests that CD4<sup>+</sup> T cells are capable of significant liver accumulation and subsequent damage through additional pathways. While the precise mechanisms responsible for Th1 accumulation in BALB/c-*Tgfb1*<sup>-/-</sup> mice are not established, our observations have possibly important implications for the efficacy of chemokine-blocking therapeutic interventions to reduce liver Th1 cell accumulation and hepatocellular damage.

## Acknowledgments

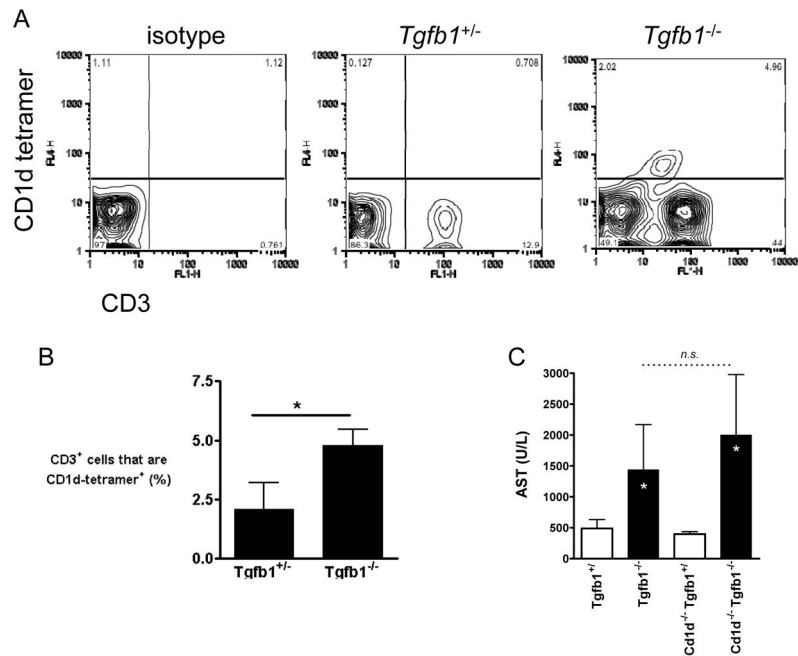
This work was supported by National Institutes of Health Grants AI078195 (JDG) and P20RR16437 from the COBRE Program of the National Center for Research Resources, as well as by a grant from the Hitchcock Foundation (JDG). JGC was supported by National Institutes of Health Training Grant T32AI07363. We thank Beverly Gorham and Christine Kretowicz for assistance in mouse breeding and screening.

## References

1. Senaldi G, et al. Immunohistochemical features of the portal tract mononuclear cell infiltrate in chronic aggressive hepatitis. *Arch Dis Child*. 1992; 67(12):1447–53. [PubMed: 1489223]
2. Rosen HR. Hepatitis C pathogenesis: mechanisms of viral clearance and liver injury. *Liver Transpl*. 2003; 9(11):S35–S43. [PubMed: 14586893]
3. Grakoui A, et al. HCV persistence and immune evasion in the absence of memory T cell help. *Science*. 2003; 302(5645):659–62. [PubMed: 14576438]
4. Schlaak JF, et al. Analysis of the in vitro cytokine production by liver-infiltrating T cells of patients with autoimmune hepatitis. *Clin Exp Immunol*. 1993; 94(1):168–173. [PubMed: 8403501]
5. Rymarchyk SL, et al. Widespread natural variation in murine natural killer T-cell number and function. *Immunology*. 2008; 125(3):331–43. [PubMed: 18445005]
6. Benlagha K, et al. A thymic precursor to the NK T cell lineage. *Science*. 2002; 296(5567):553–5. [PubMed: 11968185]
7. Matsuda JL, et al. Tracking the response of natural killer T cells to a glycolipid antigen using CD1d tetramers. *J Exp Med*. 2000; 192(5):741–54. [PubMed: 10974039]
8. Gantner F, et al. Concanavalin A-induced T-cell-mediated hepatic injury in mice: the role of tumor necrosis factor. *Hepatology*. 1995; 21(1):190–198. [PubMed: 7806154]
9. Tiegs G, Hentschel J, Wendel A. A T cell-dependent experimental liver injury in mice inducible by concanavalin A. *J Clin Invest*. 1992; 90(1):196–203. [PubMed: 1634608]
10. Knolle PA, et al. Role of sinusoidal endothelial cells of the liver in concanavalin A-induced hepatic injury in mice. *Hepatology*. 1996; 24(4):824–9. [PubMed: 8855184]
11. Toyabe S, et al. Requirement of IL-4 and liver NK1+ T cells for concanavalin A-induced hepatic injury in mice. *J Immunol*. 1997; 159(3):1537–42. [PubMed: 9233653]
12. Takeda K, et al. Critical contribution of liver natural killer T cells to a murine model of hepatitis. *Proc Natl Acad Sci U S A*. 2000; 97(10):5498–503. [PubMed: 10792025]
13. Osman Y, et al. Activation of hepatic NKT cells and subsequent liver injury following administration of alpha-galactosylceramide. *Eur J Immunol*. 2000; 30(7):1919–28. [PubMed: 10940881]
14. Oo YH, Adams DH. The role of chemokines in the recruitment of lymphocytes to the liver. *J Autoimmun*. 2010; 34(1):45–54. [PubMed: 19744827]

15. Nishioji K, et al. Increase of chemokine interferon-inducible protein-10 (IP-10) in the serum of patients with autoimmune liver diseases and increase of its mRNA expression in hepatocytes. *Clin Exp Immunol.* 2001; 123(2):271–9. [PubMed: 11207658]
16. Nagayama K, et al. Overexpression of interferon gamma-inducible protein 10 in the liver of patients with type I autoimmune hepatitis identified by suppression subtractive hybridization. *Am J Gastroenterol.* 2001; 96(7):2211–7. [PubMed: 11467655]
17. Honda M, et al. cDNA microarray analysis of autoimmune hepatitis, primary biliary cirrhosis and consecutive disease manifestation. *J Autoimmun.* 2005; 25(2):133–40. [PubMed: 16150573]
18. Shields PL, et al. Chemokine and chemokine receptor interactions provide a mechanism for selective T cell recruitment to specific liver compartments within hepatitis C-infected liver. *J Immunol.* 1999; 163(11):6236–43. [PubMed: 10570316]
19. Zeremski M, et al. Intrahepatic levels of CXCR3-associated chemokines correlate with liver inflammation and fibrosis in chronic hepatitis C. *Hepatology.* 2008; 48(5):1440–50. [PubMed: 18798334]
20. Affo S, Bataller R. RANTES antagonism: a promising approach to treat chronic liver diseases. *J Hepatol.* 2011; 55(4):936–8. [PubMed: 21708198]
21. Li MO, et al. Transforming growth factor-beta regulation of immune responses. *Annu Rev Immunol.* 2006; 24:99–146. [PubMed: 16551245]
22. Gorham JD, et al. Genetic regulation of autoimmune disease: BALB/c background TGF-beta 1-deficient mice develop necroinflammatory IFN-gamma-dependent hepatitis. *J Immunol.* 2001; 166(10):6413–6422. [PubMed: 11342667]
23. Rudner LA, et al. Necroinflammatory liver disease in BALB/c background, TGF-beta 1-deficient mice requires CD4+ T cells. *J Immunol.* 2003; 170(9):4785–92. [PubMed: 12707360]
24. Robinson RT, et al. End-organ damage in a mouse model of fulminant liver inflammation requires CD4+ T cell production of IFN-gamma but is independent of Fas. *J Immunol.* 2009; 182(5):3278–84. [PubMed: 19234226]
25. Hancock WW, et al. Requirement of the chemokine receptor CXCR3 for acute allograft rejection. *J Exp Med.* 2000; 192(10):1515–20. [PubMed: 11085753]
26. Pan J, et al. CXCR3/CXCR3 ligand biological axis impairs RENCA tumor growth by a mechanism of immunoangiostasis. *J Immunol.* 2006; 176(3):1456–64. [PubMed: 16424173]
27. Cripps JG, et al. Type 1 T helper cells induce the accumulation of myeloid-derived suppressor cells in the inflamed Tgfb1 knockout mouse liver. *Hepatology.* 2010; 52(4):1350–9. [PubMed: 20803559]
28. Milks MW, et al. The role of Ifng in alterations in liver gene expression in a mouse model of fulminant autoimmune hepatitis. *Liver Int.* 2009; 29(9):1307–15. [PubMed: 19490417]
29. Mendiratta SK, et al. CD1d1 mutant mice are deficient in natural T cells that promptly produce IL-4. *Immunity.* 1997; 6(4):469–77. [PubMed: 9133426]
30. Kita H, et al. Quantitation and phenotypic analysis of natural killer T cells in primary biliary cirrhosis using a human CD1d tetramer. *Gastroenterology.* 2002; 123(4):1031–43. [PubMed: 12360465]
31. Ishikawa S, et al. CD1d-restricted natural killer T cells contribute to hepatic inflammation and fibrogenesis in mice. *J Hepatol.* 2011; 54(6):1195–204. [PubMed: 21145835]
32. Cheng L, et al. Involvement of natural killer T cells in halothane-induced liver injury in mice. *Biochem Pharmacol.* 2010; 80(2):255–61. [PubMed: 20359463]
33. Kaneko Y, et al. Augmentation of Valpha14 NKT cell-mediated cytotoxicity by interleukin 4 in an autocrine mechanism resulting in the development of concanavalin A-induced hepatitis. *J Exp Med.* 2000; 191(1):105–114. [PubMed: 10620609]
34. Ferri S, et al. A multifaceted imbalance of T cells with regulatory function characterizes type 1 autoimmune hepatitis. *Hepatology.* 2010; 52(3):999–1007. [PubMed: 20683931]
35. Ramadori G, Saile B. Inflammation, damage repair, immune cells, and liver fibrosis: specific or nonspecific, this is the question. *Gastroenterology.* 2004; 127(3):997–1000. [PubMed: 15362057]
36. Bonder CS, et al. Essential role for neutrophil recruitment to the liver in concanavalin A-induced hepatitis. *J Immunol.* 2004; 172(1):45–53. [PubMed: 14688308]

37. Sallusto F, Lanzavecchia A, Mackay CR. Chemokines and chemokine receptors in T-cell priming and Th1/Th2-mediated responses. *Immunol Today*. 1998; 19(12):568–74. [PubMed: 9864948]
38. Loetscher P, et al. CCR5 is characteristic of Th1 lymphocytes. *Nature*. 1998; 391(6665):344–5. [PubMed: 9450746]
39. Qin S, et al. The chemokine receptors CXCR3 and CCR5 mark subsets of T cells associated with certain inflammatory reactions. *J Clin Invest*. 1998; 101(4):746–54. [PubMed: 9466968]
40. Holst PJ, et al. CCR5 and CXCR3 are dispensable for liver infiltration, but CCR5 protects against virus-induced T-cell-mediated hepatic steatosis. *J Virol*. 2007; 81(18):10101–12. [PubMed: 17626099]
41. Bonder CS, et al. Rules of recruitment for Th1 and Th2 lymphocytes in inflamed liver: a role for alpha-4 integrin and vascular adhesion protein-1. *Immunity*. 2005; 23(2):153–63. [PubMed: 16111634]

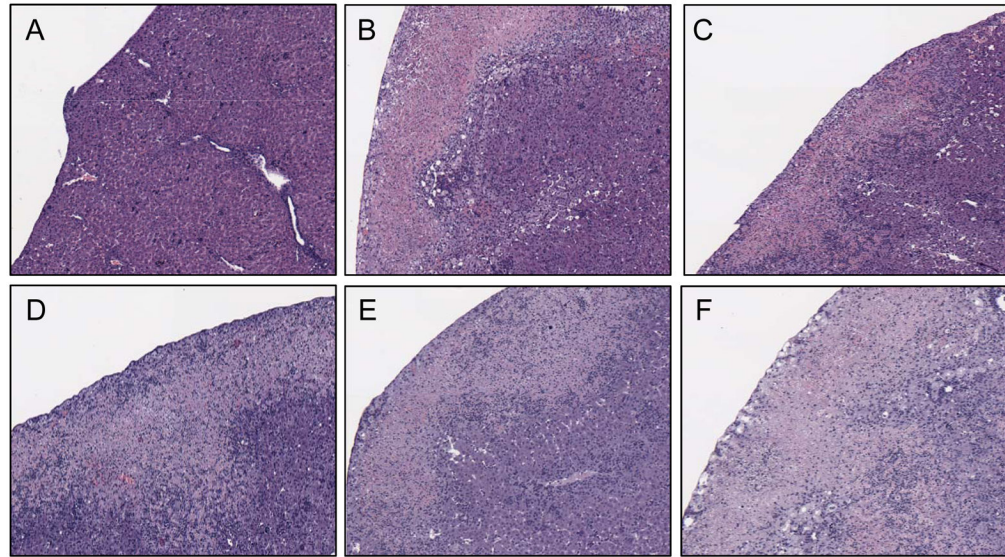


**Figure 1. iNKT cell numbers are increased in liver in *Tgfb1*<sup>-/-</sup> mice but do not contribute to tissue damage**

(A) Liver MNC from 11 day old mice were stained with anti-CD3 and CD1d- $\alpha$ galcer tetramer and analyzed by flow cytometry. Representative flow plots are displayed.

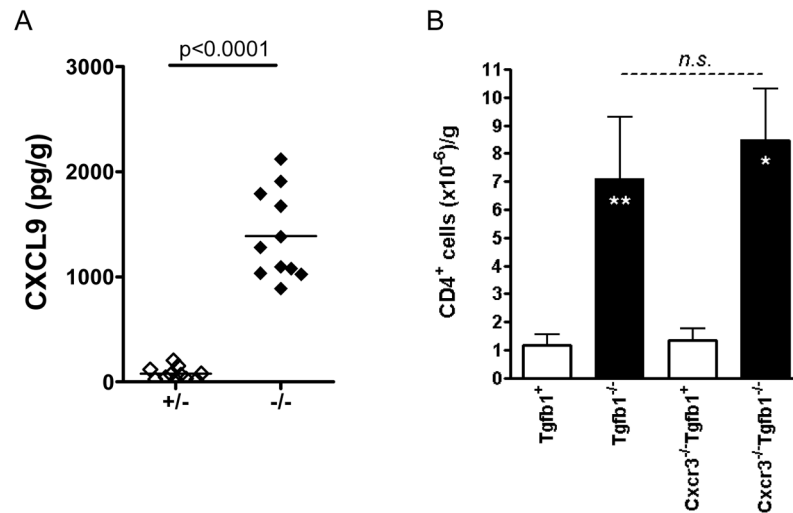
(B) Combined data showing the percentage of CD3<sup>+</sup> cells that stain positive for the CD1d- $\alpha$ galcer tetramer. n = 3 or more mice per genotype. \*, p<0.05, Student's t-test. Error bars indicate SD.

(C) AST was measured from 11 day old mice of the indicated genotypes. White asterisks reflect statistical differences (\* p<0.02) between *Tgfb1*<sup>-/-</sup> mice and their littermate control *Tgfb1*<sup>+/+</sup> mice and *Tgfb1*<sup>+/-</sup> mice (aggregated as "*Tgfb1*<sup>+</sup>"). n = 6 mice per genotype, except for the *Cd1d*<sup>-/-</sup>*Tgfb1*<sup>+</sup> genotype, for which n = 4. n.s indicates not significant. Mann-Whitney test. Error bars indicate SD.



**Figure 2. Histologic liver damage in *Tgfb1*<sup>-/-</sup> mice is independent of CD1d/iNKT cells, CXCR3, and CCR5**

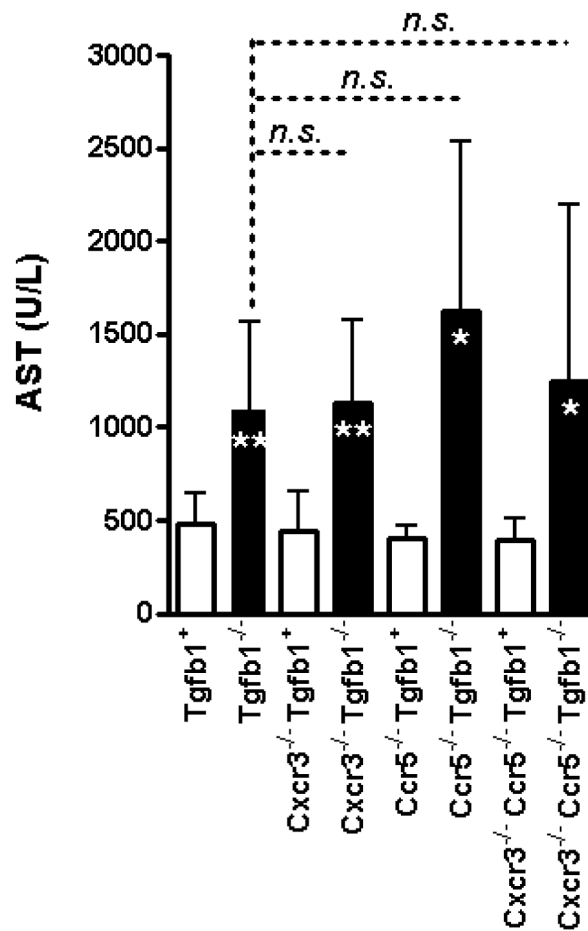
Low power micrographs of H&E stained livers from mice of the following genotypes: (A) *Tgfb1*<sup>+</sup>; (B) *Tgfb1*<sup>-/-</sup>; (C) *Cd1d*<sup>-/-</sup>*Tgfb1*<sup>-/-</sup>; (D) *Cxcr3*<sup>-/-</sup>*Tgfb1*<sup>-/-</sup>; (E) *Ccr5*<sup>-/-</sup>*Tgfb1*<sup>-/-</sup>; (F) *Cxcr3*<sup>-/-</sup>*Ccr5*<sup>-/-</sup>*Tgfb1*<sup>-/-</sup>. Obvious necrosis of the liver is observed in *Tgfb1*<sup>-/-</sup> mice, independent of the presence or absence of CD1d/iNKT cells, CXCR3, CCR5, or CXCR3/CCR5.



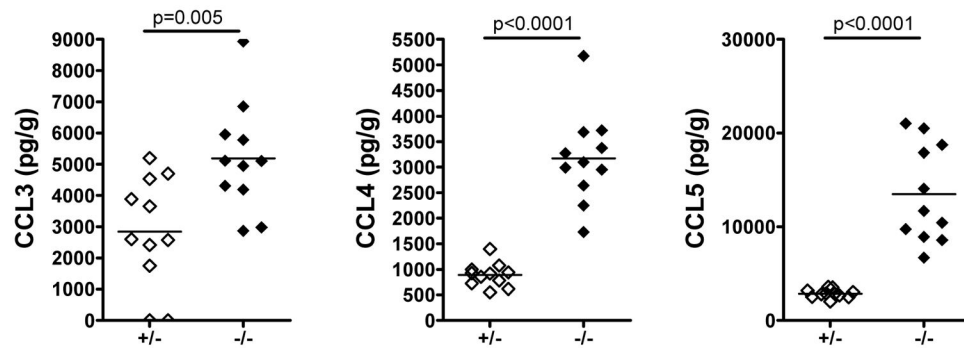
**Figure 3. CXCL9 is over-expressed in  $Tgfb1^{-/-}$  mouse livers, but CD4<sup>+</sup> T cell accumulation is independent of CXCR3**

(A) The CXCR3 ligand CXCL9 was measured in liver lysates isolated from 11 day old  $Tgfb1^{+/-}$  mice and  $Tgfb1^{-/-}$  mice and expressed as pg/g wet weight (n=11 for each genotype). Chemokines were measured by Luminex bead assay. Horizontal lines indicate means. The p value from a statistical comparison of data (Student's t test) is shown at the top of the graph.

(B) Livers were dissected from 11 day old mice and weighed. Liver MNC were isolated, counted by hemacytometer, and stained for CD4<sup>+</sup> T cells. CD4<sup>+</sup> density (cells/g) was calculated. \* p<0.01; \*\* p<0.001. *n.s.*: no significant difference. Mann-Whitney test. n = 4–6 mice per genotype. Error bars indicate SD.

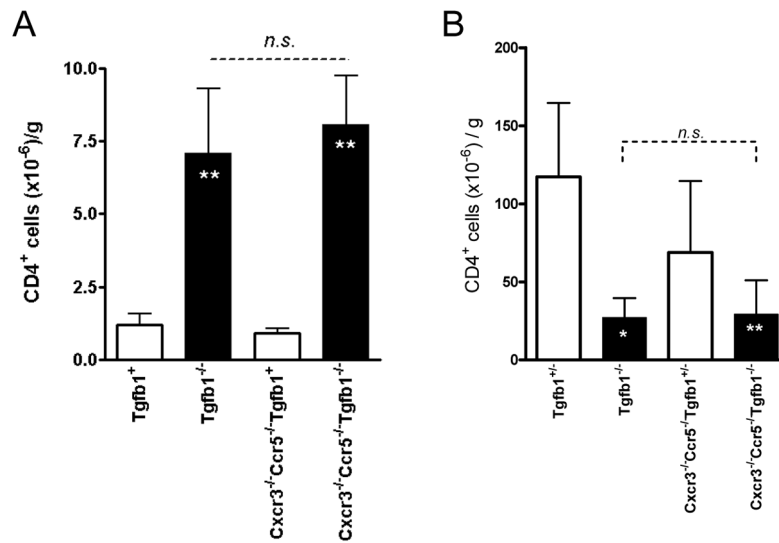


**Figure 4. AST elevation in *Tgfb1*<sup>-/-</sup> mice is independent of CXCR3 and CCR5**  
 AST was measured from 11 day old mice of the indicated genotypes. White asterisks reflect statistical differences (\*, p<0.01; \*\*, p<0.001) between *Tgfb1*<sup>-/-</sup> mice and their littermate control *Tgfb1*<sup>+/+</sup> mice and *Tgfb1*<sup>+/-</sup> mice (aggregated as "*Tgfb1*<sup>+</sup>"). n = 6 or more mice per genotype. For the comparisons indicated by the dashed lines, differences were not significant (*n.s.*). Mann-Whitney test. Error bars indicate SD.

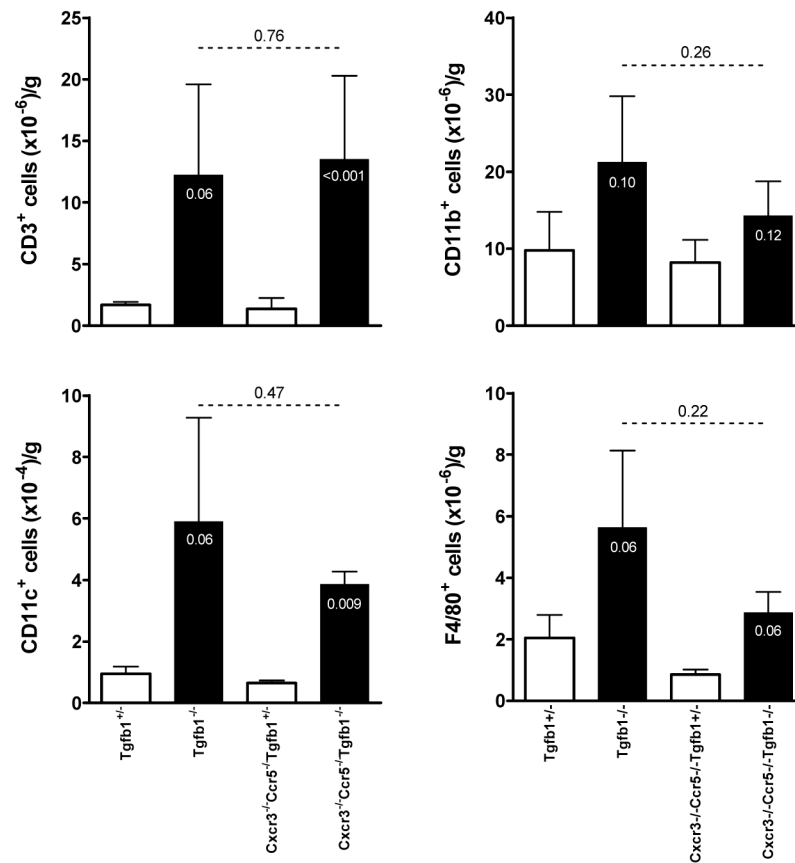


**Figure 5. Chemokine ligands for CCR5 are over-expressed in *Tgfb1*<sup>-/-</sup> mouse livers**  
 Chemokine ligands that activate CCR5 were measured in liver lysates isolated from 11 day old *Tgfb1*<sup>+/-</sup> mice and *Tgfb1*<sup>-/-</sup> mice and expressed as pg/g wet weight. Each symbol represents one mouse of the indicated genotype. Chemokines were measured by Luminex bead assay. Horizontal lines indicate means. The p values from statistical comparisons of data (Student's t test) are shown at the top of the graphs.



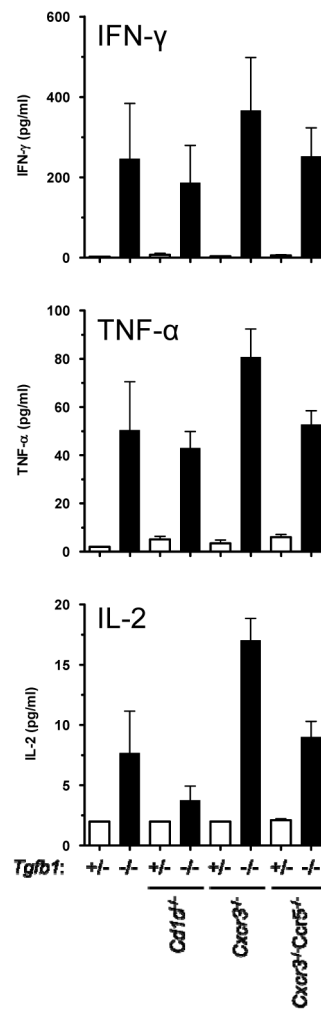


**Figure 6. CD4<sup>+</sup> T cell accumulation in *Tgfb1*<sup>-/-</sup> mouse liver and reduction in *Tgfb1*<sup>-/-</sup> mouse spleen are independent of both CXCR3 and CCR5**  
 (A) Liver and (B) splenic MNC from 11 day old mice of the indicated genotypes were isolated, counted by hemacytometer, and stained for CD4<sup>+</sup> T cells. CD4<sup>+</sup> densities (cells/g) were calculated. \* p<0.01; \*\* p<0.001; *n.s.*: no significant difference. Mann-Whitney test. *n* = 4–7 mice per genotype. Error bars indicate SD.



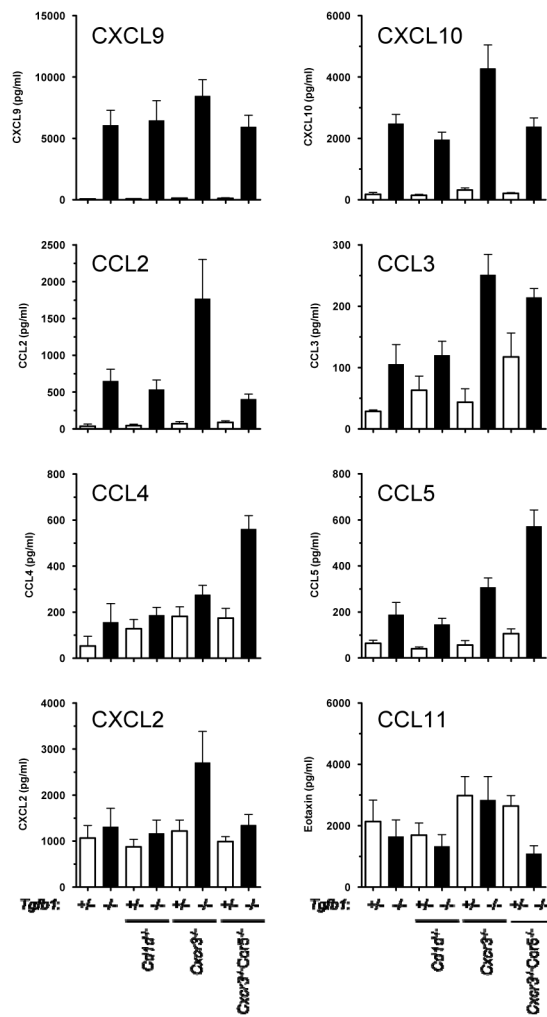
**Figure 7. Accumulation of T cells, dendritic cells, and macrophages in *Tgfb1*<sup>-/-</sup> mouse liver is independent of both CXCR3 and CCR5**

Liver MNC prepared as in the legend to figure 6 were stained for the markers CD3, CD11c, CD11b, and F4/80. p values for statistical comparisons are shown. Increases in some cell populations approached ( $p < 0.10$ ), but did not reach ( $p < 0.05$ ) statistical significance. Error bars indicate SD.

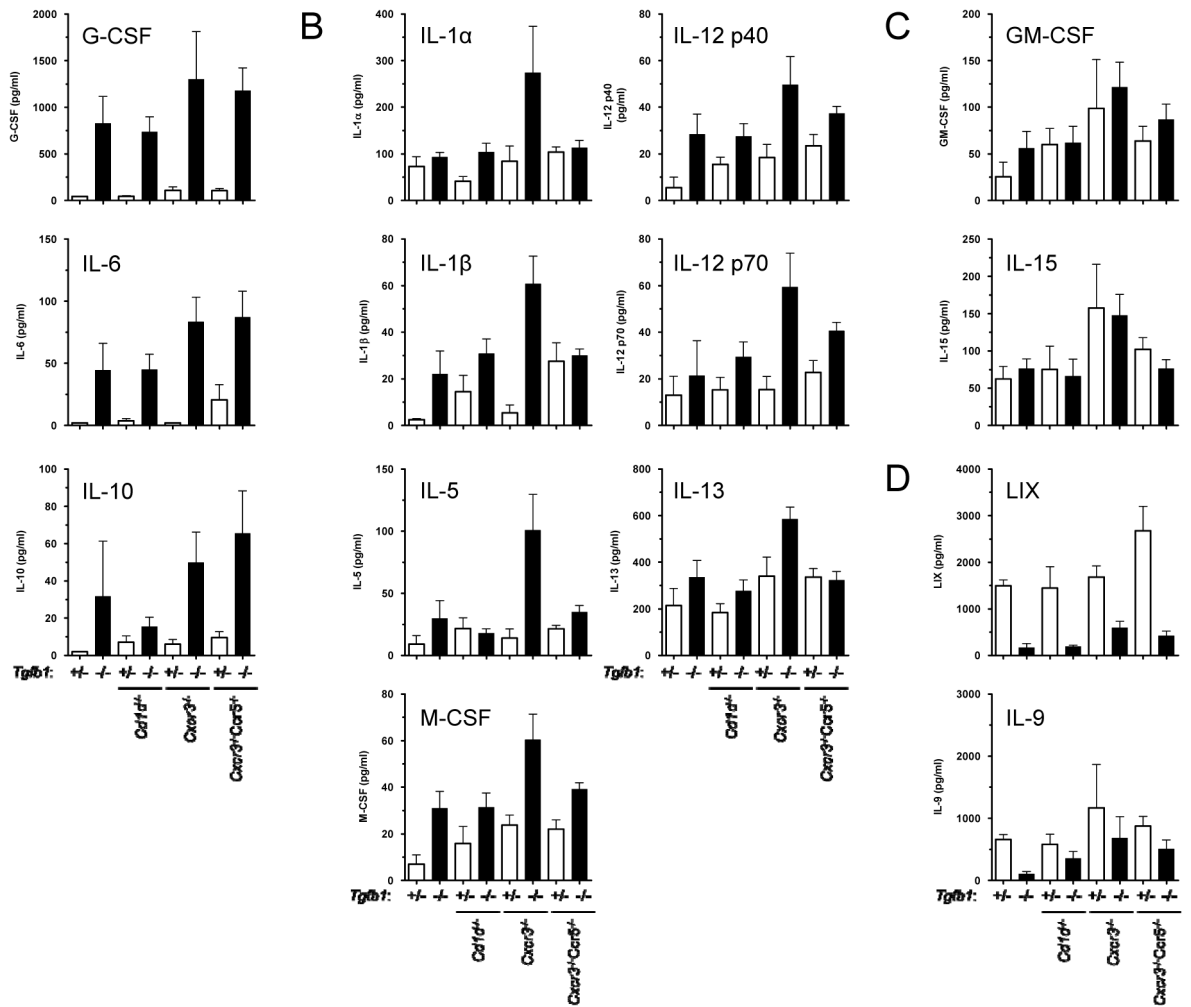


**Figure 8. Overexpression of type 1 cytokines is independent of CD1d/iNKT cells, CXCR3, and CCR5**

Plasma samples were isolated at day 11 for mice of the indicated genotypes. Cytokines were measured by Luminex bead assay and results shown as pg/ml.  $n = 3-10$  mice per genotype, except for *Tgfb1*<sup>+</sup> mice, for which  $n = 2$ . Error bars indicate SEM.



**Figure 9. Overexpression of IFN- $\gamma$ -induced chemokines is independent of CD1d/iNKT cells, CXCR3, and CCR5**  
 Chemokines were analyzed in day 11 samples by Luminex, and results are displayed as in the legend to figure 8.



**Figure 10. Expression levels of specific cytokines are differentially influenced by TGF- $\beta$ 1, CD1d/iNKT cells, CXCR3, and CCR5**

Cytokines were analyzed in day 11 samples by Luminex, and results are displayed as in the legend to figure 8. (A) Some cytokines (G-CSF, IL-6, IL-10) are strongly over-expressed in plasma from *Tgfb1*<sup>-/-</sup> mice; expression levels are largely independent of functional *Cd1d*, *Cxcr3*, or *Ccr5* genes. (B) These cytokines show highest expression when both *Tgfb1* and *Cxcr3* are knocked out, but levels revert when *Ccr5* is additionally knocked out. (C) Expression levels of some cytokines (GM-CSF, IL-15) are unaffected in *Tgfb1*<sup>-/-</sup> mice. (D) Expression levels of some cytokines (LIX, IL-9) are reduced in *Tgfb1*<sup>-/-</sup> mice.