



RESEARCH ARTICLE

REVISED

Ketamine as an adjunctive therapy for major depression - a randomised controlled pragmatic pilot trial (Karma-Dep Trial) [version 2; peer review: 2 approved]

Bronagh Gallagher ¹, Meabh Foley¹, Claire M. Slattery¹, Gabriele Gusciute¹, Enda Shanahan¹, Declan M. McLoughlin ^{1,2}

¹Department of Psychiatry, Trinity College Dublin, St. Patrick's University Hospital, James Street, Dublin, Ireland

²Institute of Neuroscience, Trinity College Dublin, Dublin, Ireland

V2 First published: 16 Dec 2020, 3:90
<https://doi.org/10.12688/hrbopenres.13182.1>
 Latest published: 27 Jan 2022, 3:90
<https://doi.org/10.12688/hrbopenres.13182.2>

Abstract

Background: Depression is a common psychiatric disorder that has become the leading cause of disability worldwide. The standard medical care for depression over the past 50 years has focused on monoamine neurotransmitters. These treatments can take weeks to take effect, highlighting the need for novel treatment strategies. One such approach may be ketamine. Ketamine acts as an antagonist of the N-methyl-D-aspartate receptor and thus targets the excitatory amino acid neurotransmitter glutamate. Interestingly, at sub-anaesthetic doses, a single infusion of ketamine can elicit a rapid, though transient, antidepressant response.

Methods: The aim of this study was to conduct a pragmatic randomised controlled pilot trial of four once-weekly ketamine infusions as an adjunctive therapy for depression. The main objective was to assess trial procedures to inform a future definitive trial. The primary clinical outcome was the 24-item Hamilton Rating Scale for Depression (HRSD-24). Trial participants were patients admitted to St Patrick's Mental Health Services for treatment of a depressive episode. They underwent usual inpatient care as prescribed by their treating team. Consented participants were randomly allocated to a four-week course of either once-weekly ketamine (0.5mg/kg) or midazolam (0.045mg/kg) infusions given over 40 minutes and with 12 weeks follow-up.

Results: In total, 1581 admissions to St Patrick's Hospital were assessed for eligibility over nine months, with 125 (8%) meeting criteria, with 25 (20%) providing consent. In total, 13 were randomly assigned to the ketamine arm and 12 to the midazolam arm. There were no major differences in HRSD-24 scores between the two groups. The infusions were generally safe and well tolerated.

Conclusions: This is the first pragmatic pilot trial of adjunctive serial ketamine infusions for hospitalised depression, an important possible

Open Peer Review

Reviewer Status

Invited Reviewers

1

2

version 2

(revision)

27 Jan 2022

version 1

16 Dec 2020



report



report

1. **George Kirov**, Cardiff University, Cardiff, UK
2. **Shane McInerney**, National University of Ireland, Galway, Ireland

Any reports and responses or comments on the article can be found at the end of the article.

use of ketamine. This study suggests that a definitive trial of adjunctive ketamine is feasible.

Trial registration: ClinicalTrials.gov [NCT03256162](https://clinicaltrials.gov/ct2/show/study/NCT03256162) 21/08/2017; EudraCT [2016-004764-18](https://eudract.eu/number/2016-004764-18) 30/11/2016.

Keywords

Ketamine, Depression, Adjunctive, Pilot trial

Corresponding author: Declan M. McLoughlin (d.mcloughlin@tcd.ie)

Author roles: **Gallagher B:** Conceptualization, Data Curation, Formal Analysis, Funding Acquisition, Investigation, Methodology, Project Administration, Supervision, Validation, Visualization, Writing – Original Draft Preparation, Writing – Review & Editing; **Foley M:** Investigation, Writing – Review & Editing; **Slattery CM:** Investigation, Writing – Review & Editing; **Gusciute G:** Investigation, Writing – Review & Editing; **Shanahan E:** Investigation, Writing – Review & Editing; **McLoughlin DM:** Conceptualization, Funding Acquisition, Methodology, Project Administration, Supervision, Writing – Review & Editing

Competing interests: DMM has received speaker's honoraria from Mecta and Otsuka and an honorarium from Janssen for participating in an esketamine advisory board meeting. The other authors report no conflicts of interest.

Grant information: Health Research Board Ireland [DIFA-2018-013] This trial was partly funded by the Dr Henry Hutchinson Stewart Scholarship in Psychiatry which was awarded by Trinity College Dublin to Dr Bronagh Gallagher in 2017.

The funders had no role in study design, data collection and analysis, decision to publish, or preparation of the manuscript.

Copyright: © 2022 Gallagher B *et al.* This is an open access article distributed under the terms of the [Creative Commons Attribution License](https://creativecommons.org/licenses/by/4.0/), which permits unrestricted use, distribution, and reproduction in any medium, provided the original work is properly cited.

How to cite this article: Gallagher B, Foley M, Slattery CM *et al.* **Ketamine as an adjunctive therapy for major depression - a randomised controlled pragmatic pilot trial (Karma-Dep Trial) [version 2; peer review: 2 approved]** HRB Open Research 2022, 3:90 <https://doi.org/10.12688/hrbopenres.13182.2>

First published: 16 Dec 2020, 3:90 <https://doi.org/10.12688/hrbopenres.13182.1>

REVISED Amendments from Version 1

In the updated version of this article I have included an additional reference (Marcantoni *et al.*, 2020) in the fourth paragraph of the introduction. This is a recent systemic review and meta analysis of intravenous ketamine use in treatment resistant depression.

Any further responses from the reviewers can be found at the end of the article

Abbreviations

BPRS; Brief Psychiatric Rating Scale; CADSS: Clinician-administered Dissociative States Scale; DSM-5: Diagnostic and Statistical Manual of Mental Disorders; Fifth edition; FDA: Food and Drug Administration; GCP: Good Clinical Practice; HPRA: Health Products Regulatory Authority; HRSD-11: Hamilton Rating Scale for Depression, 11-item; HRSD-24: Hamilton Rating Scale for Depression, 24-item; ICH: International Conference on Harmonisation; MADRS: Montgomery-Asberg Depression Rating Scale; MDD: Major Depressive Disorder; MINI: Mini International Neuropsychiatric Interview; MoCA: Montreal Cognitive Assessment; MSMTRD: Maudsley Staging Method for Treatment Resistance in Depression; NICE: National Institute for Health and Care Excellence; NMDA: N-methyl-D-aspartate; PRISE: Patient-rated Inventory of Side-effects; QIDS-SR-16: Quick Inventory of Depressive Symptoms, Self-Report, 16-item; RCT: Randomised Controlled Trial; SNRI: Serotonin-Norepinephrine Reuptake Inhibitor; SSRI: Selective Serotonin Reuptake Inhibitors; STAR*D: Sequenced Treatment Alternatives to Relieve Depression; TRD: Treatment Resistant Depression; YMRS: Young Mania Rating Scale

Introduction

Depression is a common psychiatric disorder that causes significant disability. It can seriously impair occupational and social functioning, resulting in reduced quality of life¹. According to the World Health Organisation, depression affects more than 300 million people worldwide and, as well as being recognised internationally as the leading cause of disability, it is a major contributor to the global burden of disease². Depression, in severe cases, can lead to suicide and almost 800,000 people worldwide each year die from suicide³. The risk of suicide is almost 20 times higher in depressed patients than in the general population⁴. Life expectancy is lowered by approximately 10 years in those with depression compared with the general population due to depression being a risk factor for many chronic cardiovascular and neurological conditions and also being associated with risky behaviours such as drug, alcohol and tobacco use⁴.

Over the past 60 years, pharmacological treatment for depression has focused on drugs targeting monoamine neurotransmitters, including tricyclic antidepressants (TCAs), selective serotonin reuptake inhibitors (SSRIs) and serotonin-norepinephrine reuptake inhibitors (SNRIs)⁵. These treatments, however, can take up to six weeks to have an effect. Additionally, multiple studies conducted in patients with depression indicate that less than 40% of patients treated with standard antidepressants achieved remission within 10–14 weeks, thereby highlighting

the need for novel treatment approaches and faster-acting antidepressants⁶.

One potential answer in addressing the need for more rapid and powerful antidepressants is the dissociative anaesthetic ketamine. Ketamine was approved by the Food and Drug Administration (FDA) in 1970 and since then has been used routinely as an anaesthetic⁷. Ketamine is a racemic mixture that consists of two enantiomers, S- and R-ketamine. Ketamine acts as a non-competitive antagonist of the N-methyl-D-aspartate (NMDA) receptor and thus targets the excitatory amino acid neurotransmitter glutamate⁸. It is postulated that it is via this mechanism that its antidepressant properties are mediated, although this is not entirely clear and may involve its metabolites and downstream signalling events⁹. There are other potential mechanisms that may contribute to ketamine's antidepressant effects such as activation of the opioid system¹⁰.

Ketamine has been shown to have rapid-acting but short-lived antidepressant effects¹¹. Since the initial reporting of ketamine's antidepressant effect in 2000 by Berman *et al.*¹², most published trials using ketamine as an antidepressant have used similar low subanaesthetic doses (0.5mg/kg) and the same route of administration (i.e. a single slow intravenous infusion over 40 minutes). A single infusion of low dose subanaesthetic ketamine rapidly improves depressive symptoms with efficacy onset within one hour post infusion, peak effect sizes occur at 24 hours and last up to 8 days¹³. Other doses of ketamine have been investigated to assess for superior antidepressant efficacy. It appears that doses less than 0.3mg/kg are ineffective while doses of 1mg/kg are intolerable due to dissociative side-effects, suggesting that 0.5mg/kg intravenous ketamine is an optimal dose with regards to therapeutic effect and tolerability¹⁴. Other routes of ketamine administration have also been investigated including intramuscular, subcutaneous and oral; however, these have been found to be less effective than the intravenous route, possibly due to reduced bioavailability^{15,16}. Very few trials have used intravenous ketamine as an adjunctive, or add-on, treatment for depression with most requiring a washout period of antidepressant prior to commencement of ketamine. Results from two randomised trials show that a single intravenous ketamine infusion, added to oral antidepressant therapy, has a more rapid antidepressant response than placebo (saline)^{17,18}.

Sub-anaesthetic doses of ketamine are generally safe and well tolerated but can have short-lived physical, psychotomimetic, neurological and psychiatric side-effects¹⁹. These adverse effects peak within the first two hours of the infusion and tend to resolve within 4–24 hours²⁰. Psychotomimetic side-effects are the most commonly reported with dissociation being the most prevalent. Psychiatric side effects, particularly anxiety, are also frequently reported and, like dissociation, can result in participants withdrawing from trials¹⁹. Less frequently reported are cardiovascular side-effects, which include increase in blood pressure and heart rate due to ketamine's activation of the sympathetic nervous system²¹ while headaches and dizziness are among the most common neurological side-effects. Limited use of sub-anaesthetic doses of ketamine is safe with side-effects being transient; however chronic, mostly recreational, high-dose ketamine use can cause uropathy and dependency²².

To date, there have been only three reported randomised controlled trials that have used repeated serial dosing of intravenous ketamine (once to thrice weekly for up to four weeks) to prolong its antidepressant effect. One trial (n=67) used twice and thrice weekly dosing of ketamine versus placebo (saline) for four weeks in medicated outpatients with treatment resistant depression, with a three-week follow-up period²³. Depression scores were significantly reduced and more sustained in both ketamine groups compared with the placebo group. Another randomised trial (n=26) administered six ketamine infusions over three weeks, versus placebo (saline), to medicated outpatients with depression and co-morbid suicidal ideation²⁴. Follow-up was continued for three months after the final infusion. Results showed that ketamine was not superior over placebo in reducing depression scores. A very recent clinical trial (n=54) compared a single ketamine infusion (preceded by five midazolam (active placebo) infusions) to six repeated ketamine infusions in medicated participants with diagnosed treatment resistant depression²⁵. Ketamine had a greater antidepressant effect over midazolam. However, there was no significant difference in the median time to relapse between the single and repeated ketamine infusions. Although numbers in this trial were small, it indicates that serial infusions may not be advantageous over a single infusion in prolonging ketamine's antidepressant effect. The positive effects of serial ketamine infusions therefore currently remain uncertain.

Intranasal esketamine has had some promising results in terms of its rapid improvement of depressive symptoms and ease of administration²⁶. It has recently become available on the market in the US and EU for use as an adjunctive treatment in treatment resistant depression. Repeated adjunctive intranasal esketamine, administered twice-weekly, then tapering in frequency over a ten-week period, showed rapid antidepressant effects with a sustained response²⁷. Similarly, serial ketamine infusions, as an adjunctive treatment, have a rapid antidepressant effect, and this effect may be maintained for longer than a single infusion²³. Reporting of serial ketamine infusions as an adjunctive treatment to standard routine care is limited.

We wished to investigate ketamine as an adjunctive treatment to improve recovery in patients hospitalised with depression. The aim of this study was to conduct a pragmatic randomised controlled patient- and rater-blinded pilot trial of a four-week course of once-weekly infusions of ketamine compared to midazolam as an adjunctive therapy for depression. All other treatments and therapies continued as usual to ensure a greater degree of generalisability. The main objective of this pilot trial was to assess trial procedures to inform a future definitive trial²⁸, including rates of recruitment, dropout and completion of follow-up assessments. Additionally, we sought to establish a 95% confidence interval for the differences between the ketamine and midazolam groups at the end of treatment time point. We hypothesised that the trial protocol would be feasible.

Methods

Study design and participants

The Karma-Dep (Ketamine as an adjunctive therapy for major depression) trial was a randomised controlled pragmatic pilot trial of four once-weekly ketamine infusions (0.5 mg/kg over

40 minutes) compared to midazolam infusions (0.045 mg/kg over 40 minutes) as an adjunctive therapy in hospitalised depressed patients. Midazolam was used as an active placebo to help with blinding¹⁴. Patients who were admitted to St Patrick's University Hospital for treatment of a depressive episode between September 2017 and June 2018 and who met eligibility criteria for the trial were approached by the research team within 10 days of admission. Depressive episodes were diagnosed using the Diagnostic and Statistical Manual of Mental Disorders – fifth edition, DSM-5²⁹, and confirmed using the Mini International Neuropsychiatric Interview (MINI; updated Version 7 for DSM-5)³⁰. After participants provided written and informed consent, they were invited to be randomised to a course of four once-weekly ketamine or midazolam (active comparator) infusions that began at the next clinic, which took place every Wednesday morning in St Patrick's University Hospital. Treatment-as-usual, directed by the participants' treating teams, continued throughout the entire trial. Psychotomimetic, physical, and cognitive outcomes were monitored before, during and after infusions. Participants were followed up for 12 weeks after the final infusion.

This clinical trial was approved by the Research Ethics Committees of both the Mater Misericordiae Hospital, Dublin, and St Patrick's University Hospital, Dublin. This trial was also approved by the Health Products Regulatory Authority (HPRA) of Ireland, the relevant national body under the European framework for clinical trials (EudraCT 2016-004764-18 on 30/11/2016) and was registered with ClinicalTrials.gov (NCT03256162 on 21/08/2017).

Eligible participants were inpatient ≥ 18 years old, being treated for an acute depressive episode and met DSM-5 criteria for major depressive disorder (MDD) or bipolar affective disorder (current episode depression) and scored ≥ 21 on the 24-item Hamilton Rating Scale for Depression (HRSD-24). To be eligible for inclusion, subjects must have met each of the above criteria at screening and baseline assessments. Exclusion criteria were current involuntary admission, active suicidal intention, dementia, history of Axis I diagnosis other than a major depressive episode, ECT administered within the last two months, a Montreal Cognitive Assessment (MoCA) score < 24 , alcohol/substance dependence in the previous six months, pregnancy or inability to confirm use of adequate contraception during the trial, breastfeeding women and any medical condition rendering the patient unfit for ketamine/midazolam. Contraindications to ketamine, as per summary of product characteristics, included hypersensitivity to the active substance, uncontrolled hypertension, severe coronary or myocardial disease, cerebrovascular accident and cerebral trauma. Contraindications to midazolam included known hypersensitivity to benzodiazepines, severe respiratory failure or acute respiratory depression. All candidates meeting any of the exclusion criteria at screening/baseline were excluded from study participation.

Randomisation and blinding

Block randomisation was performed by another researcher within St Patrick's University Hospital and who was not otherwise associated with the Karma-Dep pilot trial. Randomisation was done in blocks of two and four. This randomisation

list was stored in a locked cabinet to which only the anaesthetist (ES) had access. A protocol was in place to allow emergency unblinding.

Study treatment assignment was blinded for both the raters and the participants as well as the regular treating teams. To ensure patient safety during infusions and in the post-infusion period, the anaesthetist administering the ketamine/midazolam infusions was not blinded but was not involved in assessments or data analysis. Infusions were prepared by the anaesthetist in a location separate to the infusion area and labelled as “trial infusion” prior to transfer to the infusion area. Success of blinding for patients and raters was assessed after the first treatment.

Assessments

The primary clinical outcome measure for this study was the change in the 24-item Hamilton Rating Scale for Depression (HRSD-24)³¹. HRSD-24 scores were obtained 60 minutes (-60 mins) before the infusion began (0 mins) and at 120 and 240 minutes after the start of the infusion. Scores on items such as sleep and appetite were carried over from the -60 mins HRSD-24 as they were unable to change in such a short period of time. The first pre-infusion HRSD-24 scores served as the baseline scores while subsequent pre-infusion scores served as weekly HRSD-24 scores with the end of treatment score taken one week after the final infusion. Follow-up assessments using the HRSD-24 were completed at six and 12 weeks after the final infusion. HRSD-24 interrater reliability was assessed before the study began and six-months into the recruitment period with intraclass correlation coefficient scores of ≥ 0.95 .

Response to treatment was defined as achieving a $\geq 60\%$ decrease from baseline HRSD-24 and a score ≤ 16 . *Remission* criteria were $\geq 60\%$ decrease in HRSD-24 from baseline and a score ≤ 10 on two consecutive weekly ratings. Criteria for *relapse* were a ≥ 10 point increase in HRSD-24 compared to responders' end of treatment score and a HRSD-24 score of ≥ 16 . A readmission to hospital for psychiatric treatment or episode of self-harm was also considered a relapse of a depressive episode. The 16-item Quick Inventory of Depressive Symptoms, self-report version (QIDS-SR 16) was used at all the same time points as the HRSD-24 to measure subjective depression ratings³².

Patient demographic information was collected pre-randomisation and included age, weight, education, marital status and socioeconomic group. Clinical variables included age of onset of depression, previous number of episodes, duration of index episode, prescribed psychotropic medications and length of hospital stay. Additional baseline assessments included the Maudsley Staging Method for Treatment Resistant Depression (MSMTRD), which is scored from 3 to 15 with higher numbers indicating a greater degree of treatment resistance³³.

To capture any side-effects participants may have experienced during or after the infusion period, we used a number of instruments before (-60mins), during (+30 mins) and after (+60 mins) the infusions. The Clinician-Administered Dissociative States Scale (CADSS)³⁴ was used to capture dissociative effects and is scored out of a maximum of 92. The positive symptoms subscale of the Brief Psychiatric Rating Scale (BPRS) was used

to measure psychotomimetic effects³⁵. This 4-item positive symptoms subscale measures suspiciousness, hallucinations, unusual thought content and conceptual disorganisation and is scored out of a maximum of 28. We used the Young Mania Rating Scale (YMRS; mood item)³⁶ to assess for mood elevation with a maximum score of 4.

Heart rate, blood pressure, pulse oximetry, and ECG were recorded to measure haemodynamic changes before and during infusions and for a further 200 minutes. These vital signs measures were taken at baseline and every 10 minutes during the infusion period. When the infusion ended, they were taken every 20 minutes for a further 80 minutes and then every 40 minutes until the end of the four-hour monitoring period. Infusions were discontinued by the anaesthetist if there were persisting haemodynamic changes (i.e. heart rate >110 /minute or systolic/diastolic blood pressure $>180/100$ or $>20\%$ increase above pre-infusion BP for more than 15 minutes) that did not respond to beta-blocker therapy.

The Patient-Rated Inventory of Side Effects (PRISE) was used to document other general adverse events by patients before (-60mins), during (+30 mins) and after (+60 mins) infusions³⁷.

Cognitive function was assessed using the Montreal Cognitive Assessment (MoCA)³⁸ at baseline, one day after the first and final infusions and at the final follow-up 12 weeks after the last infusion.

Interventions

Ketamine (0.5 mg/kg) and midazolam (0.045 mg/kg) were made up as 50 ml colourless saline solutions and administered as slow infusions over 40 minutes using an infusion pump, as previously described³⁹. Like ketamine at 0.5 mg/kg, midazolam at 0.045 mg/kg has anaesthetic effects and causes some sedation with a similar time course. Participants were asked to fast for 8 hours prior to infusion clinics. All patients were monitored for heart rate, blood pressure, pulse oximetry and ECG before, during and after infusions. A researcher contacted each participant 24 hours after each infusion to check for additional potential adverse effects.

Patients were withdrawn from the trial if an infusion was discontinued for haemodynamic reasons or other serious medical contra-indications, e.g. over-sedation, hypoxia, intolerable adverse physical reactions; the patient developed mania or psychosis; the patient became severely depressed and/or suicidal. All infusions took place while participants were inpatients.

Statistical analysis

Baseline clinical and demographic characteristics are presented using descriptive statistics. Variables were examined for normality using the Kolmogorov-Smirnov test. 95% confidence intervals for the differences between the groups at the end of treatment phase were calculated. Descriptive and comparative statistics were performed using IBM SPSS Statistics, version 24.0 (IBM Corp, Armonk, NY). We initially planned to recruit 40 participants (20 per group) to also allow for some biomarker research⁴⁰. However, recruitment ended earlier than expected when 25 participants had been enrolled in good time, demonstrating

that a larger definitive trial was clearly feasible. A sample size of 12 participants per group is adequate for the purpose of a pilot trial⁴¹. Data are presented as means (standard deviation (SD)) or medians (range).

Results

Participants

The CONSORT diagram in [Figure 1](#) summarises reasons for ineligibility, non-recruitment and dropouts at each stage of the trial. Recruitment took place over a nine-month period between September 2017 and June 2018 and follow-up assessments were completed by September 2018. During this time, 1581

admissions to St Patrick's University Hospital were assessed for eligibility. Of these, 125 (8%) were potentially eligible to participate in the trial and 25 (20%) of these agreed to participate. In total, 13 patients were randomly assigned to the ketamine arm and 12 to the midazolam arm. Demographic and baseline clinical characteristics of the sample are summarised in [Table 1](#). The randomised groups were reasonably balanced with no major obvious differences between age, gender, baseline depression scores and level of treatment resistance.

A total of 16 participants (64%) completed all four infusions, eight in each group. In the ketamine group, four (30.8%)

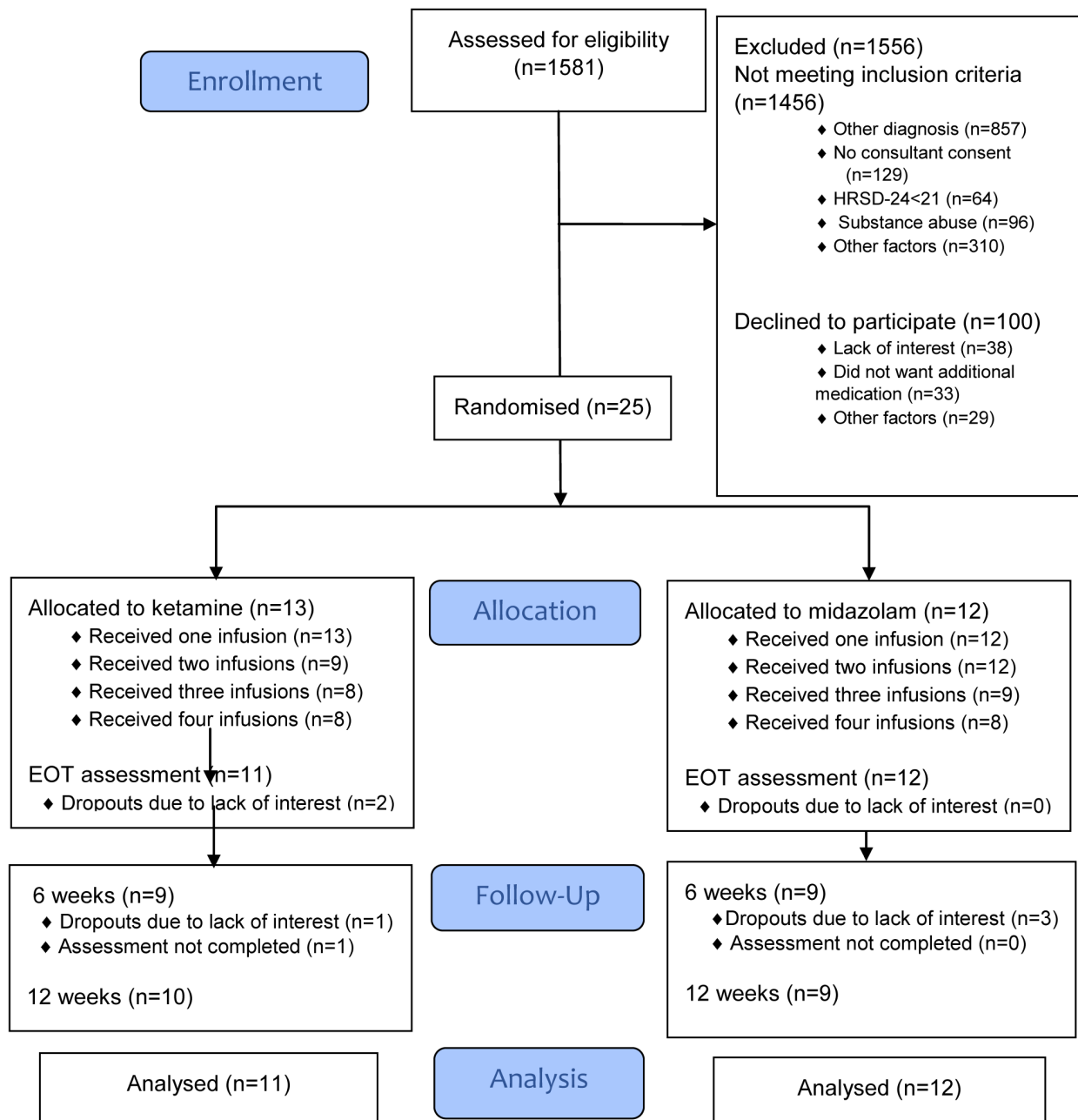


Figure 1. CONSORT flow diagram. EOT, end of treatment.

Table 1. Baseline clinical and demographic characteristics. BMI indicates body mass index; HRSD-24, 24-item Hamilton Rating Scale for Depression; QIDS-SR-16, Quick Inventory of Depressive Symptoms, Self-Report, 16-item; MOCA, Montreal Cognitive Assessment; MSTRD, Maudsley Staging Method for Treatment Resistance in Depression; ECT, Electroconvulsive therapy; SSRI, Selective Serotonin Reuptake Inhibitors.

Characteristic	Total sample (n=25)		Ketamine (n=13)		Midazolam (n=12)	
	Mean	SD	Mean	SD	Mean	SD
Age (years)	50.5	12.6	48.9	13.1	52.3	12.5
BMI	28.7	5.5	28.2	7.1	29.3	3.1
Education (years)	15.9	3.4	17.1	3.9	14.7	2.2
Baseline HRSD-24	27.7	3.9	28.4	4.3	27.4	4.3
Baseline QIDS-SR 16	17.2	3.9	17.3	3.3	16.8	4.6
Baseline MOCA	26.9	1.9	26.8	2.0	27.0	1.9
Treatment resistance (MSTRD)	7.4	2.1	7.8	2.5	7.0	1.5
Number of psychotropic medications	3.2	1.5	3.6	1.5	2.8	1.4
	Median	Range	Median	Range	Median	Range
Age of onset of depression	21	12-49	21	12-43	22	12-49
Previous number of episodes	5	1-40	5	2-40	7	1-20
Episode duration (in days)	60	14-720	42	14-330	75	14-720
Length of stay	35	8-107	37	8-107	34.5	11-63
	N	%	N	%	N	%
Female	13	52.0	8	61.5	5	41.7
Marital status:						
Married	11	44.0	7	53.8	4	33.3
Single	8	32.0	2	15.4	6	50.0
Widowed/divorced	6	24.0	4	30.8	2	16.7
Socioeconomic group:						
Professional	5	20.0	4	30.8	1	8.3
Managerial or technical	11	44.0	5	38.5	6	50.0
Skilled occupation	4	16.0	2	15.4	2	16.7
Partly skilled occupation	3	12.0	2	15.4	1	8.3
Unskilled occupations	2	8.0	0	0	2	16.7
Previous ECT, yes	4	16.0	2	15.4	2	16.7
Psychotropic medications						
SSRIs	9	36.0	5	38.5	4	33.3
Non-SSRIs	20	80.0	11	84.6	9	75.0
Mood stabilisers	10	40.0	6	46.2	4	33.3
Antipsychotics	13	52.0	10	76.9	3	25.0
Benzodiazepines	12	48.0	5	38.5	7	58.3
Hypnotics	9	36.0	4	30.8	5	41.7

participants discontinued after one infusion. Of these, two dropped out due to dissociative side-effects, one chose to do a therapeutic programme and could no longer attend the infusion clinics and one had improved sufficiently to be discharged from hospital. One participant (7.8%) discontinued after two infusions as they were prescribed electroconvulsive therapy (ECT). In the midazolam group, three participants (25%) discontinued after the second infusion. One was due to side-effects (nightmares), one was referred for ECT and one had improved sufficiently to be discharged from hospital. One (8.3%) discontinued after the third infusion as they left hospital against medical advice. End of treatment assessments were obtained for 11/13 (85%) of patients in the ketamine group and 12/12 (100%) in the midazolam group. Retention rates of participants who agreed to remain in the trial for follow-up purposes were as follows: 18/25 (72%) at six weeks and 19/25 (76%) after 12 weeks. Retention rates in the ketamine group were 9/13 (69%) at six weeks and 10/13 (77%) at 12 weeks. In the midazolam group rates were 9/12 (75%) at week six and 9/12 (75%) at week 12.

When asked about treatment allocation after the first infusion session, 10/13 (76.9%) in the ketamine group and 7/12 (58.3%) in the midazolam group correctly guessed their treatment. For raters, 10/13 (76.9%) guesses for the ketamine group and 10/12 (83.3%) for the midazolam group were correct.

Depression outcomes

Figure 2 compares the HRSD-24 scores in the ketamine and midazolam groups at baseline, end of treatment and follow up at weeks six and 12. Both groups followed a similar pattern, with depression scores lower at end of treatment than at baseline. Figure 3 shows a more detailed breakdown of the HRSD-24 scores for both groups at -60, +120 and +240 minutes during

infusion sessions 1 to 4. The mean difference in HDRS-24 scores between the ketamine and midazolam groups, at the end of the treatment phase was -2.6 (95% CI -8.26 to 3.03) points. The QIDS-16 SR scores followed a similar pattern to the HRSD-24 scores, as shown in Figure 4 and Figure 5. Data relating to the very first infusion sessions have been previously reported on in a study examining peripheral blood molecular changes related to ketamine⁴⁰.

The rates of responders and remitters in both groups are shown in Table 2. There were no participants, in either group, who met response criteria during the first infusion session at either +120 or +240 minutes post start of infusion. At the end of treatment assessment, the proportion of responders in the ketamine and midazolam groups were 6/11 (55%) and 6/12 (50%) while remission rates were 2/11 (18%) and 4/12 (33%), respectively. By the 12-week follow-up, the proportion of responders in the ketamine and midazolam groups were 7/10 (70%) and 4/9 (44%) and proportion of remitters were 2/10 (20%) and 2/9 (22%) respectively.

Safety and tolerability

Several instruments were used before, during and after infusion sessions to assess for psychotomimetic side-effects. Figure 6 summarises the CADSS dissociative symptom scores obtained from the ketamine and midazolam groups at various time points during infusion sessions. Participants receiving ketamine tended to score higher than those in the midazolam group. During the first infusion, the mean CADSS score (at 30 minutes) was 17.8 (15.0) in the ketamine group and 3.4 (4.4) in the midazolam group. The peak CADSS scores within the ketamine group declined with each subsequent infusion session and returned towards pre-infusion levels at the +60 minute time

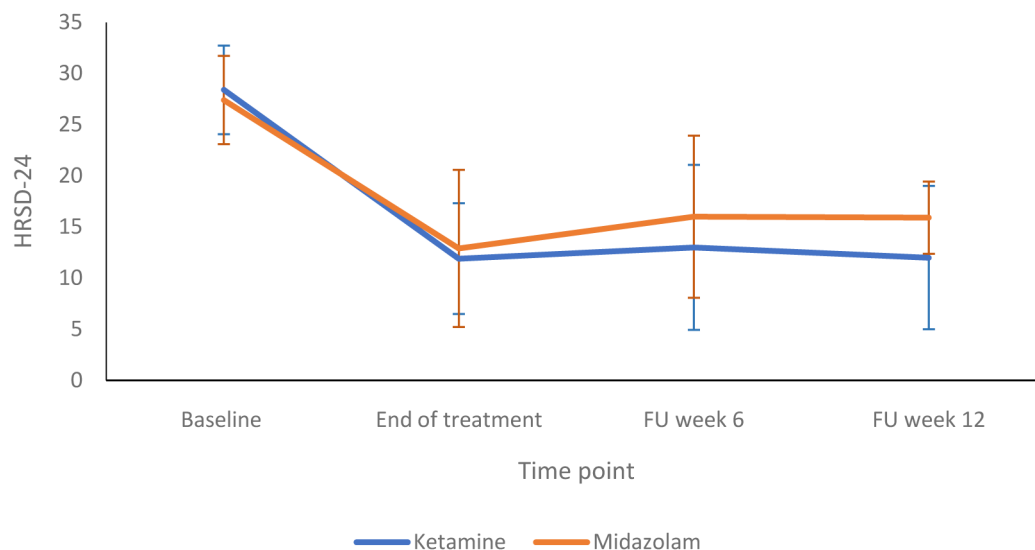


Figure 2. Depression rating scores at end of treatment and follow up timepoints: 24-item Hamilton Rating Scale for Depression (HRSD-24) scores are presented as mean (SD) values. FU, follow-up. Number of participants at each stage: Baseline - Ketamine n=13, Midazolam n=12; End of treatment - Ketamine n=11, Midazolam n=12; Follow-up at 6 weeks - Ketamine n=9, Midazolam n=9; Follow-up at 12 weeks - Ketamine n=10, Midazolam n=9.

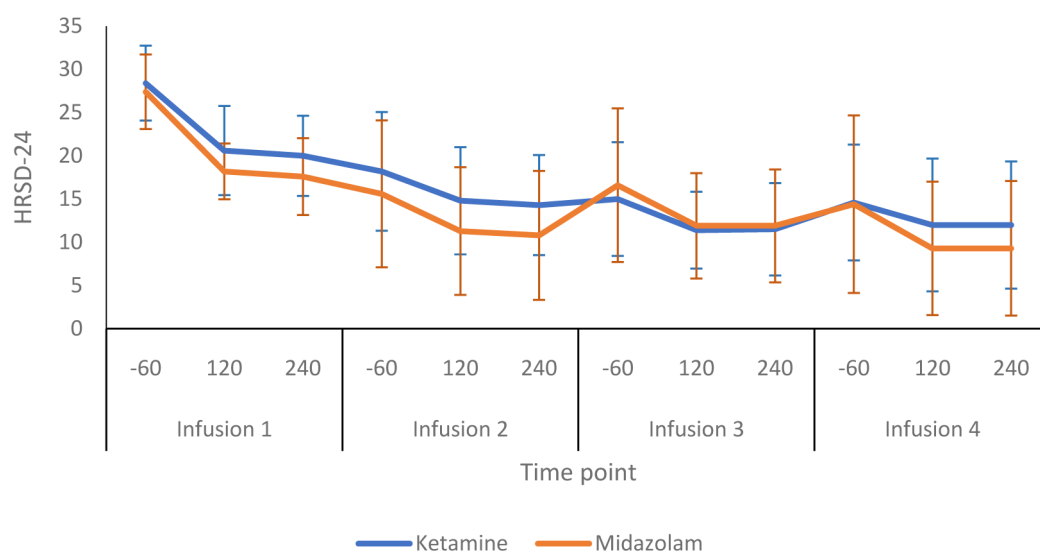


Figure 3. Depression rating scores throughout the infusion sessions: 24-item Hamilton Rating Scale for Depression (HRSD-24) scores are presented as mean (SD) values. -60, 60 minutes before infusion begins; 120, 120 minutes post start of infusion; 240, 240 minutes post start of infusion. Number of participants at each infusion: Infusion 1 - Ketamine n=13, Midazolam n=12; Infusion 2 - Ketamine n=9, Midazolam n=12; Infusion 3 - Ketamine n=8, Midazolam n=9; Infusion 4 - Ketamine n=8, Midazolam n=8.

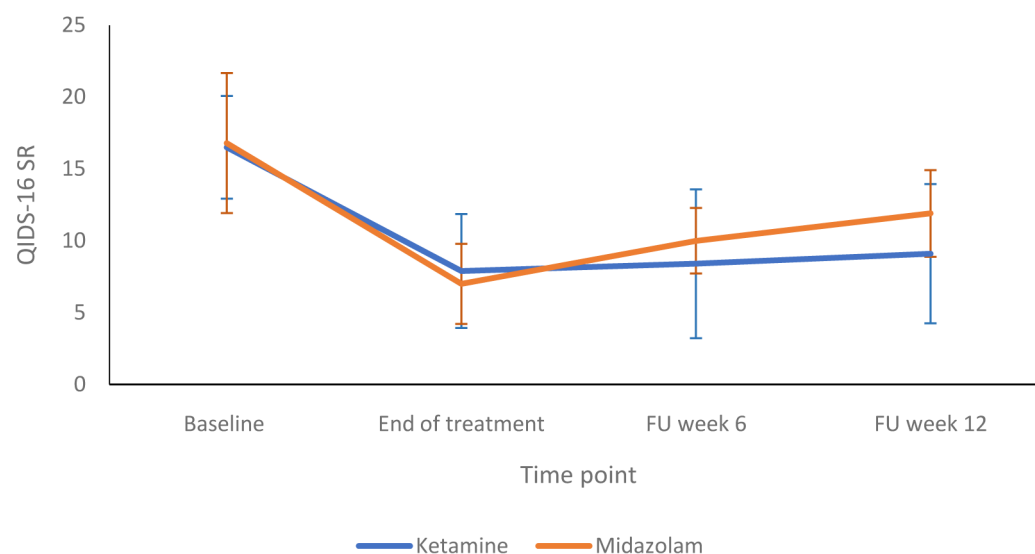


Figure 4. Patient-rated depression scores at end of treatment and follow up timepoints: 16-item Quick Inventory of Depressive Symptoms, self-report version, (QIDS-SR 16) scores are presented as mean (SD) values. FU, follow-up. Number of participants at each stage: Baseline - Ketamine n=13, Midazolam n=12; End of treatment - Ketamine n=11, Midazolam n=12; Follow-up at 6 weeks - Ketamine n=9, Midazolam n=9; Follow-up at 12 weeks - Ketamine n=10, Midazolam n=9.

point (i.e. 20 minutes after infusions finished) for each of the four infusions sessions (Table 3). Psychosis (BPRS) and mania (YMRS) scores are shown in Table 3. No participants in either group experienced psychosis or elevated mood during any of the infusion sessions.

Table 4 shows the numbers of participants who experienced physical symptoms during each of the four infusion sessions

as recorded by the PRISE. The most common new-onset side-effects that occurred during the first infusion session in the ketamine group were anxiety (31%), dizziness (31%), restlessness (23%), fatigue (23%), poor co-ordination (23%) and dry mouth (23%). These symptoms became less prevalent in subsequent infusion sessions. One participant reported new onset palpitations in the second ketamine infusion; however, this episode was short lived, was not distressing and was not described

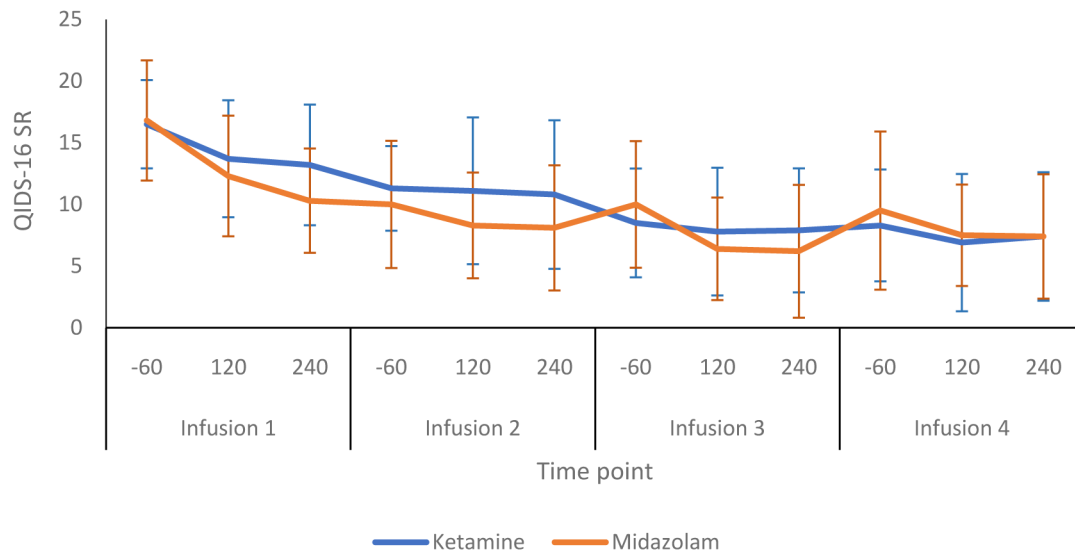


Figure 5. Patient-rated depression scores throughout the infusion sessions: 16-item Quick Inventory of Depressive Symptoms, self-report version, (QIDS-SR 16) scores are presented as mean (SD) values. -60, 60 minutes before infusion begins; 120, 120 minutes post start of infusion; 240, 240 minutes post start of infusion. Number of participants at each infusion: Infusion 1 - Ketamine n=13, Midazolam n=12; Infusion 2 - Ketamine n=9, Midazolam n=12; Infusion 3 - Ketamine n=8, Midazolam n=9; Infusion 4 - Ketamine n=8, Midazolam n=8.

Table 2. Rates of responders and remitters during the treatment phase and follow-up timepoints. Inf, Infusion; +120, 120 minutes post commencement of infusion; +240, 240 minutes post commencement of infusion; EoT, End of treatment; FU, Follow-up.

	Response (%)		Remission (%)	
	Ketamine	Midazolam	Ketamine	Midazolam
Inf 1: +120 mins	0/13 (0%)	0/12 (0%)	0/13 (0%)	0/12 (0%)
Inf 1: +240 mins	0/13 (0%)	0/12 (0%)	0/13 (0%)	0/12 (0%)
Inf 2: baseline	2/13 (15%)	4/12 (33%)	0/13 (0%)	0/12 (0%)
Inf 3: baseline	2/8 (25%)	3/9 (33%)	1/9 (11%)	3/9 (33%)
Inf 4: baseline	2/8 (25%)	3/8 (38%)	2/8 (25%)	3/8 (38%)
EoT assessment	6/11 (55%)	6/12 (50%)	2/11 (18%)	4/12 (33%)
FU week 6	5/9 (56%)	2/9 (22%)	3/9 (33%)	2/9 (22%)
FU week 12	7/10 (70%)	4/9 (44%)	2/10 (20%)	2/9 (22%)

as a side-effect in subsequent infusions. There were no other new onset side-effects reported during subsequent ketamine infusions. The PRISE records whether the participants found the symptoms to be 'tolerable' or 'distressing'. Two of the participants in the ketamine group reported anxiety as a new symptom in the first infusion session and found it to be distressing. The same two participants also experienced nausea and vomiting and reported this as distressing. Both participants dropped out of the trial after the first infusion session due to poor tolerability but agreed to be followed-up. All of the other symptoms reported in the ketamine group were considered to be tolerable.

The most common side-effects that were reported during the first infusion session in the midazolam group were sleeping too much (33%) and fatigue (42%). Fatigue continued to be reported in the midazolam group in subsequent sessions with 38% reporting it in the fourth infusion. One participant reported new onset dizziness on standing during the second midazolam infusion; however, this was not reported in subsequent infusions. There were no participants who described any physical symptom in the midazolam group as 'distressing'. There were no obvious differences in terms of new onset physical symptoms between the two groups.

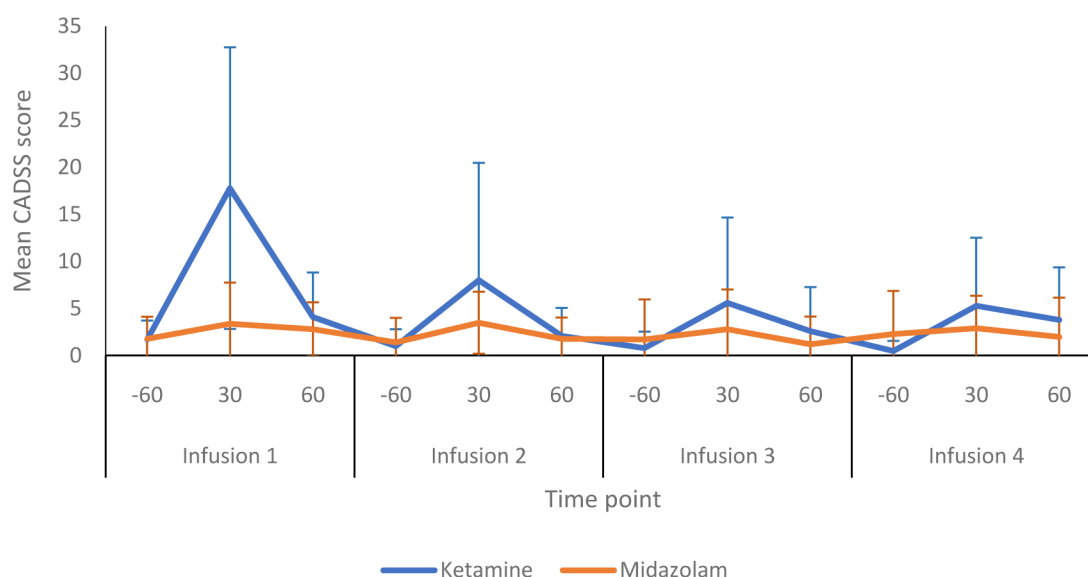


Figure 6. Dissociative symptoms during infusion sessions: The graph shows the total mean (SD) scores for the Clinician-Administered Dissociative States Scale (CADSS) during allocated infusion sessions. -60, 60 minutes prior to commencement of infusion; 30, 30 minutes post start of infusion; 60, 60 minutes post start of infusion. Number of participants at each infusion: Infusion 1 - Ketamine n=13, Midazolam n=12; Infusion 2 - Ketamine n=9, Midazolam n=12; Infusion 3 - Ketamine n=8, Midazolam n=9; Infusion 4 - Ketamine n=8, Midazolam n=8.

Table 3. Emergent dissociation, psychosis and mania during infusion sessions. CADSS, Clinician-Administered Dissociative States Scale presented as mean (SD) values; BPRS, the positive symptoms subscale of the Brief Psychiatric Rating Scale presented as median (range) values; YMRS, Mood item of the Young Mania Rating Scale; -60, 60 minutes prior to start of infusion; +30, 30 minutes post start of infusion; +60, 60 minutes post start of infusion; Number of participants at each infusion: Infusion 1 - Ketamine n=13, Midazolam n=12; Infusion 2 - Ketamine n=9, Midazolam n=12; Infusion 3 - Ketamine n=8, Midazolam n=9; Infusion 4 - Ketamine n=8, Midazolam n=8.

	Time point	CADSS		BPRS		YMRS	
		Ketamine	Midazolam	Ketamine	Midazolam	Ketamine	Midazolam
Infusion 1	-60	1.7 (2.0)	1.8 (2.3)	4 (4-4)	4 (4-7)	0	0
	+30	17.8 (15.0)	3.4 (4.4)	4 (4-6)	4 (4-6)	0	0
	+60	4.1 (4.7)	2.8 (2.9)	4 (4-5)	4 (4-5)	0	0
Infusion 2	-60	1.0 (1.8)	1.4 (2.6)	4 (4-5)	4 (4-5)	0	0
	+30	8.0 (12.5)	3.5 (3.3)	4 (4-5)	4 (4-5)	0	0
	+60	2.1 (3.0)	1.8 (2.2)	4 (4-5)	4 (4-4)	0	0
Infusion 3	-60	0.8 (1.8)	1.7 (4.3)	4 (4-5)	4 (4-6)	0	0
	+30	5.6 (9.1)	2.8 (4.2)	4 (4-5)	4 (4-5)	0	0
	+60	2.6 (4.7)	1.2 (2.9)	4 (4-5)	4 (4-5)	0	0
Infusion 4	-60	0.5 (1.1)	2.3 (4.6)	4 (4-4)	4 (4-4)	0	0
	+30	5.3 (7.2)	2.9 (3.5)	4 (4-5)	4 (4-5)	0	0
	+60	3.8 (5.6)	2.0 (4.2)	4 (4-4)	4 (4-5)	0	0

Table 4. Number (%) of participants experiencing acute physical side-effects, as recorded by the PRISE, during each infusion session. K, ketamine; M, midazolam; Base, 60 minutes prior to each infusion; +30, 30 minutes post start of infusion; +60, 60 minutes post start of infusion; Number of participants at each infusion: Infusion 1 - Ketamine n=13, Midazolam n=12; Infusion 2 - Ketamine n=9, Midazolam n=12; Infusion 3 - Ketamine n=8, Midazolam n=9; Infusion 4 - Ketamine n=8, Midazolam n=8.

Symptom	Infusion 1						Infusion 2						Infusion 3						Infusion 4					
	K	M	K	M	K	M	K	M	K	M	K	M	K	M	K	M	K	M	K	M	K	M	K	M
	Base	+30	+60	Base	+30	+60	Base	+30	+60	Base	+30	+60	Base	+30	+60	Base	+30	+60	Base	+30	+60	Base	+30	+60
Diarrhoea	0	0	0	0	0	0	0	0	0	0	0	0	0	0	0	0	0	0	0	0	0	0	0	0
Constipation	0	0	0	0	0	0	0	0	0	0	0	0	0	0	0	0	0	0	0	0	0	0	0	0
Dry mouth	1 (8)	4 (31)	2 (17)	1 (8)	2 (22)	1 (11)	1 (11)	0	1 (11)	0	2 (22)	1 (11)	0	0	1 (13)	0	0	0	0	0	1 (13)	1 (13)	0	0
Nausea / vomiting	0	2 (15)	0	0	0	0	0	0	0	0	0	0	0	0	0	0	0	0	0	0	0	0	0	0
Palpitation	0	0	0	0	0	0	0	1 (11)	0	0	0	0	0	0	0	0	0	0	0	0	0	0	0	0
Dizziness on standing	0	0	0	0	0	0	0	0	1 (8)	0	0	0	0	0	0	0	0	0	0	0	0	0	0	0
Chest pain	0	0	0	0	0	0	0	0	0	0	0	0	0	0	0	0	0	0	0	0	0	0	0	0
Rash	0	0	0	0	0	0	0	0	0	0	0	0	0	0	0	0	0	0	0	0	0	0	0	0
Increased perspiration	0	1 (8)	0	0	0	0	0	0	0	0	0	0	0	0	0	0	0	0	0	0	0	0	0	0
Itching	0	0	0	0	0	0	0	0	0	0	0	0	0	0	0	0	0	0	0	0	0	0	0	0
Dry skin	0	0	0	0	0	0	0	0	0	0	0	0	0	0	0	0	0	0	0	0	0	0	0	0
Headache	0	1 (8)	0	0	0	0	1 (8)	1 (11)	3 (25)	0	2 (17)	0	0	0	1 (11)	0	0	0	0	0	0	0	0	0
Tremors	0	1 (8)	0	0	0	0	0	0	0	0	0	0	0	0	0	0	0	0	0	0	0	0	0	0
Poor coordination	0	3 (23)	0	0	0	0	0	1 (11)	0	0	0	0	0	1 (13)	0	0	0	0	0	1 (13)	0	0	0	0
Dizziness	0	4 (31)	0	0	0	0	0	1 (11)	0	0	0	0	0	1 (13)	0	0	0	0	0	2 (25)	0	0	0	0
Blurred vision	0	2 (15)	1 (8)	0	0	0	0	1 (11)	1 (8)	0	0	0	0	1 (13)	0	0	0	0	0	0	0	0	0	0
Ringing in ears	0	1 (8)	0	0	0	0	0	0	0	0	0	0	0	0	0	0	0	0	0	0	0	0	0	0
Difficulty urinating	0	0	0	0	0	0	0	0	0	0	0	0	0	0	0	0	0	0	0	0	0	0	0	0

Symptom	Infusion 1						Infusion 2						Infusion 3						Infusion 4					
	K	M	K	M	K	M	K	M	K	M	K	M	K	M	K	M	K	M	K	M	K	M	K	M
	Base	+30	+60	Base	+30	+60	Base	+30	+60	Base	+30	+60	Base	+30	+60	Base	+30	+60	Base	+30	+60	Base	+30	+60
Painful urination	0	0	0	0	0	0	0	0	0	0	0	0	0	0	0	0	0	0	0	0	0	0	0	0
Frequent urination	0	0	0	0	0	0	0	0	0	0	0	0	0	0	0	0	0	0	0	0	0	0	0	0
Menstrual irregularity	0	0	0	0	0	0	0	0	0	0	0	0	0	0	0	0	0	0	0	0	0	0	0	0
Difficulty sleeping	0	0	0	0	0	0	0	0	0	0	0	0	0	0	0	0	0	0	0	0	0	0	0	0
Sleeping too much	1 (8)	1 (8)	4 (33)	1 (8)	1 (11)	0 (8)	0	0	0	0	0	0	2 (25)	1 (11)	0	0	0	0	1 (13)	0	0	1 (13)	0	0
Loss of sexual desire	0	0	0	0	0	0	0	0	0	0	0	0	0	0	0	0	0	0	0	0	0	0	0	0
Trouble achieving orgasm	0	0	0	0	0	0	0	0	0	0	0	0	0	0	0	0	0	0	0	0	0	0	0	0
Trouble with erections	0	0	0	0	0	0	0	0	0	0	0	0	0	0	0	0	0	0	0	0	0	0	0	0
Anxiety	2 (15)	6 (46)	3 (25)	2 (17)	1 (8)	1 (11)	0	3 (33)	0 (11)	0	0	0	0	0	0	0	0	0	2 (25)	0	1 (13)	0	0	0
Poor concentration	0	1 (8)	1 (8)	0	0	0	0	0	0	0	0	0	0	2 (22)	0	0	0	0	0	1 (13)	0	0	0	0
General malaise	0	0	0	0	0	0	0	0	0	0	0	0	0	0	0	0	0	0	0	0	0	0	0	0
Restlessness	0	3 (23)	0	0	0	0	0	0	0	0	0	0	1 (13)	0	0	0	0	0	2 (25)	0	0	0	0	0
Fatigue	1 (8)	4 (31)	5 (42)	1 (8)	3 (25)	0 (8)	0	2 (22)	3 (25)	0 (8)	0	1 (11)	1 (13)	5 (56)	0 (22)	1 (13)	0	2 (22)	1 (13)	3 (38)	1 (13)	0	0	0
Decreased energy	3 (23)	4 (31)	4 (33)	2 (17)	3 (25)	0 (8)	1 (11)	3 (25)	0 (8)	1 (8)	0	1 (8)	0	1 (11)	0	0	0	0	0	0	0	0	0	0

Of the 32 physical symptoms that were specifically inquired about, there were no new onset of symptoms for 15 of these in either group during any of the four infusions. There were no participants who experienced new onset urinary symptoms in either group.

Vital signs were closely monitored and recorded throughout each infusion session. Table 5 shows the mean scores for systolic

blood pressure (SBP), diastolic blood pressure, heart rate and oxygen saturation for baseline and 10, 20, 30, 40 and 60 minutes post start of infusion for each of the four infusion sessions in both groups. Mean changes in SBP from baseline to 40 minutes into the infusion were calculated for both groups during the first infusion session. In the ketamine group, the mean change in SBP between these two time points was 16.6 (11.5) mm Hg. In the midazolam group, the mean change

Table 5. Mean (SD) blood pressure, heart rate and oxygen saturation values for each infusion session. Ket, ketamine; Mid, midazolam; BP, blood pressure (mm Hg); HR, heart rate per minute; S02, oxygen saturation; Inf, infusion; 10 min, 10 minutes post start of infusion; 20 min, 20 minutes post start of infusion; 30 min, 30 minutes post start of infusion; 40 min, 40 minutes post start of infusion; 60 min, 60 minutes post start of infusion.

Timepoint		Systolic BP		Diastolic BP		HR		S02	
		Ket	Mid	Ket	Mid	Ket	Mid	Ket	Mid
Inf 1	Baseline	120.5 (17.6)	130.7 (14.9)	76.5 (10.6)	79.9 (12.8)	73.9 (12.4)	70.9 (12.6)	96.3 (2.0)	95.8 (2.5)
	10 min	127.5 (23.7)	121.8 (17.8)	79.5 (14.1)	75.2 (13.9)	74.5 (11.7)	69.3 (10.7)	97.0 (1.8)	95.3 (2.4)
	20 min	135.2 (24.1)	121.7 (21.3)	82.7 (13.6)	75.8 (15.2)	78.5 (11.8)	70.0 (12.6)	97.3 (2.1)	95.2 (2.6)
	30 min	137.8 (22.0)	117.3 (19.0)	85.2 (14.7)	75.1 (15.0)	78.3 (11.2)	69.5 (12.9)	96.9 (1.9)	94.9 (2.6)
	40 min	137.8 (25.2)	117.3 (19.0)	84.2 (12.4)	72.0 (16.8)	80.2 (15.1)	72.4 (15.0)	96.9 (2.6)	95.3 (2.6)
	60 min	131.1 (20.8)	124.2 (19.9)	76.3 (12.8)	73.7 (13.9)	75.2 (10.1)	72.4 (11.1)	96.6 (1.9)	95.5 (4.0)
Inf 2	Baseline	119.8 (16.6)	128.1 (16.2)	66.1 (10.2)	78.9 (13.6)	71.2 (22.4)	69.2 (68.3)	96.3 (2.0)	96.6 (2.0)
	10 min	124.9 (20.6)	118.4 (15.6)	68.0 (8.6)	73.5 (11.8)	74.9 (12.3)	67.1 (13.1)	95.9 (2.5)	95.6 (1.8)
	20 min	127.6 (18.0)	118.8 (15.7)	71.9 (8.5)	73.2 (11.4)	75.4 (10.1)	68.5 (12.0)	96.7 (1.9)	94.3 (2.2)
	30 min	128.4 (18.0)	113.0 (21.7)	73.4 (9.3)	68.9 (13.2)	78.6 (12.2)	68.7 (12.1)	96.4 (2.0)	94.8 (2.6)
	40 min	131.3 (18.0)	118.4 (14.5)	74.5 (9.8)	73.3 (6.6)	77.8 (10.4)	68.3 (11.5)	96.8 (1.7)	94.8 (2.9)
	60 min	124.6 (19.4)	118.8 (14.5)	67.9 (10.0)	75.8 (12.1)	77.9 (12.7)	68.7 (11.5)	95.4 (2.7)	95.6 (2.2)
Inf 3	Baseline	122.3 (20.0)	120.4 (16.6)	73.7 (8.1)	73.2 (13.7)	76.8 (13.0)	67.1 (13.3)	96.1 (2.7)	97.1 (1.5)
	10 min	124.0 (23.3)	117.1 (19.7)	73.9 (7.3)	73.3 (13.9)	73.8 (11.6)	65.0 (13.0)	95.5 (3.2)	94.8 (2.7)
	20 min	123.0 (21.2)	116.2 (20.5)	75.3 (7.4)	69.2 (15.2)	74.9 (11.2)	65.4 (12.2)	95.9 (3.1)	95.3 (2.7)
	30 min	125.5 (22.9)	117.7 (19.4)	78.0 (11.0)	70.0 (9.1)	77.1 (11.5)	64.3 (12.9)	95.8 (2.8)	93.9 (1.8)
	40 min	126.0 (23.6)	111.2 (17.1)	77.5 (8.6)	70.1 (12.7)	76.8 (11.5)	65.6 (13.0)	95.9 (2.5)	94.8 (2.7)
	60 min	125.9 (18.8)	117.0 (18.5)	72.7 (10.7)	73.1 (10.2)	73.5 (11.6)	65.8 (11.1)	96.6 (2.1)	95.1 (2.9)

Timepoint		Systolic BP		Diastolic BP		HR		S02	
		Ket	Mid	Ket	Mid	Ket	Mid	Ket	Mid
Inf 4	Baseline	122.6 (17.6)	121.6 (22.2)	71.4 (10.3)	73.6 (15.7)	78.1 (9.6)	66.0 (12.6)	96.3 (1.4)	96.1 (1.6)
	10 min	122.6 (20.3)	115.5 (19.3)	72.4 (6.3)	71.0 (12.0)	77.5 (9.7)	62.8 (9.0)	95.9 (1.2)	94.8 (2.2)
	20 min	125.1 (23.3)	113.1 (18.6)	72.4 (4.8)	70.9 (13.3)	78.1 (9.4)	63.6 (9.8)	95.9 (1.9)	95.0 (0.9)
	30 min	128.1 (20.6)	115.4 (23.1)	73.9 (6.7)	68.3 (10.3)	79.1 (10.8)	64.8 (9.6)	95.5 (2.1)	94.6 (1.8)
	40 min	128.0 (18.8)	111.4 (18.9)	76.5 (5.8)	67.1 (11.2)	81.4 (10.3)	63.4 (10.5)	95.8 (2.2)	94.1 (1.9)
	60 min	125.1 (17.4)	116.1 (22.9)	74.2 (6.8)	72.1 (14.3)	81.4 (10.2)	65.5 (12.0)	95.8 (2.3)	94.0 (2.9)

was -13.3 (17.1) mm Hg. SBP tended to increase at 40 minutes in the ketamine group while SBP decreased at 40 minutes in the midazolam group. Nine participants in total (36%) had an increase in SBP of $\geq 20\%$ from baseline during the first infusion session. Eight of these received ketamine and one received midazolam. Three participants (14%) had an increase in SBP of $\geq 20\%$ from baseline during the second infusion – all three were in the ketamine group. Two participants (12%) had $\geq 20\%$ increase in SBP from baseline during the third infusion session – one from each group, and, two participants (13%) had this increase in SBP in the fourth infusion session and both were in the midazolam group. Blood pressures were measured again 10 minutes after these elevated readings, and all elevated blood pressures had returned to within 20% of their baseline measures at this time. No pharmacological intervention was required for any of the increases in BP. There were no participants with a heart rate above 110 per minute during the infusion phase or up to 200 minutes after the infusion. Stable oxygen saturation and electrocardiogram rhythm were observed in all participants during the monitoring period before, during and after the infusions for up to 200 mins. There were no serious adverse events or reactions throughout the trial.

The MoCA was used to assess cognitive function at four time points during the trial (Table 6). There were no obvious differences between the scores of the two groups at the four time points and scores did not appear to differ from baseline.

Discussion

This is the first pragmatic trial of adjunctive serial ketamine infusions for hospitalised depression, an important possible use of ketamine. The aim of this pilot trial was to assess the feasibility of this study to inform a future definitive trial. Recruitment was successful and 20% of patients who were eligible for this study consented to take part. Adherence to interventions was also satisfactory with 8/13 participants completing all four ketamine infusions and 8/12 completing all four midazolam infusions. Overall, 16/25 (64%) of participants completed

Table 6. MoCA scores during treatment and at the 12 week follow up timepoint. Montreal Cognitive Assessment (MoCA) scores are presented as mean (SD) values; Number of participants at each timepoint: Baseline - Ketamine n=13, Midazolam n=12; 1 day post infusion 1 - Ketamine n=13, Midazolam n=12; 1 day post final infusion - Ketamine n=8, Midazolam n=8; 12 weeks follow-up - Ketamine n=8, Midazolam n=7.

Time point	Ketamine	Midazolam
Baseline	26.8 (2.0)	27.0 (1.9)
1 day post infusion 1	27.4 (1.6)	27.8 (1.6)
1 day post final infusion	27.6 (1.4)	27.8 (2.2)
12 week follow up	26.0 (3.0)	28.7 (1.4)

the intended four once-weekly infusions. Reasons for discontinuing included side-effects (3/9), commencing ECT (2/9), opting for doing an educational programme that coincided with clinic time (1/9) and being discharged from hospital before all four infusions were complete (3/9). Follow-up assessment rates were also adequate with 72% of participants completing the six-week and 76% completing the 12-week follow up.

In general, ketamine and midazolam infusions were safe and well tolerated in our small patient sample. Dissociative side-effects were more prevalent in the ketamine group in line with results from previous trials¹⁹. With each subsequent infusion, dissociative symptoms in the ketamine group diminished. Some trials have experimented with various doses of ketamine (lower than 0.5mg/kg) and have shown that some participants respond to ketamine at doses as low as 0.1mg/kg¹⁶. Dose titration of ketamine may be an alternative way of minimising side-effects whilst optimising efficiency and therefore reducing dropouts as a result. There were no episodes of mania or psychosis during any of the infusions in this trial. Although increases in blood pressure

were more common in the ketamine group, these were transient and had returned to baseline during the post infusion monitoring period. Increases in blood pressure in the ketamine group became less prevalent with subsequent infusion sessions. The most common physical side-effects reported in the ketamine group were anxiety and dizziness, however these also lessened with subsequent infusions. Physical symptoms reported in this pilot trial are in keeping with those documented in previous trials¹⁹. In the midazolam group, the most commonly reported symptom was fatigue, the prevalence of which was maintained as the treatment course continued. The vast majority of new onset physical symptoms in both groups were considered to be tolerable. Apart from palpitations reported in the second ketamine infusion by one participant and dizziness on standing reported in the second midazolam session, there were no other new onset symptoms that emerged during the treatment course after the first infusion session.

Previous studies have shown that a single infusion of subanaesthetic dose of ketamine has a fast acting antidepressant effect which is superior to placebo¹³. This effect tends to start at 40 minutes after start of infusion, peak at day 1 and lose superiority at approximately day 10. Although this pilot trial was not sufficiently powered to detect differences in HRSD-24 depression scores, we did not observe the superior antidepressant effect of ketamine, with both groups having similar depression scores following each infusion period. No participants met response criteria within four hours of the first infusion session in either group. There have been very few trials that have examined serial ketamine infusions in depressed patients and results have been inconsistent in terms of its potential to prolong its antidepressant effects²³⁻²⁵. As this is a pilot trial with a small number of participants, we were unable to establish differences in depression scores at the follow-up time points. Further research is required to establish the possible sustained antidepressant effect of serial ketamine infusions.

Most previous trials that have used subanaesthetic doses of ketamine in the treatment of depression, have used saline as the placebo. There has been limited reporting of the success of blinding in many of these trials. In our pilot trial, 10/13 participants in the ketamine group correctly guessed their infusion and 7/12 in the midazolam group guessed correctly. Although these numbers are too small to interpret, it gives us some indication of the possible advantages of blinding when using midazolam as an active comparator. Midazolam mimics some of the psychoactive effects of ketamine making it potentially more acceptable as a placebo in clinical trials. A separate trial reported success of blinding in ketamine versus midazolam and had similar results to the Karma-Dep trial with 5/7 and 7/9 correctly guessing their allocated infusions to be ketamine and midazolam respectively⁴².

Strengths of this study include the use of midazolam as an active placebo, therefore, potentially helping with blinding and establishing an accurate treatment effect when compared to using only saline. Most other ketamine trials have used ketamine following a wash out period from other antidepressant therapies.

As ketamine was used as an adjunctive treatment to other antidepressant medication and routine care in our trial, the results are more generalisable to real world practice.

This trial has several limitations. As this is a pilot trial, it is not adequately powered to detect statistically significant differences between the depression scores of the two groups. Further limitations include eligibility being restricted to only inpatients within St Patrick's University Hospital and participants not being permitted to continue with the infusion clinics if discharged early from hospital. We included those with both unipolar and bipolar depressive disorders but excluded those with a previous psychotic illness. Treatment as usual was continued for all participants by their treating teams which included medication changes and multidisciplinary team input which makes it difficult to distinguish between the antidepressant effects of ketamine and those of other medication changes and therapies.

Conclusions

This study suggests that a definitive trial of adjunctive ketamine in the treatment of persons hospitalised for a depressive episode is feasible. Recruitment rates and retention rates were satisfactory. Ketamine and midazolam infusions were generally well tolerated with only a small proportion of participants (3/25, 12%) discontinuing treatment due to side-effects. More studies, however, are required to assess potential longer-term side-effects of repeated ketamine infusions.

Data availability

Underlying data

Access to raw data is restricted under Research Ethics Committees approval as even de-identified data may contain information that could potentially identify a participant which may present a potential breach in General Data Protection Regulation (GDPR). As a result, this data cannot be made available publicly. To access the data, please contact Bronagh Gallagher (bgallag@tcd.ie) or the Principal Investigator (d.mcloughlin@tcd.ie). Researchers must provide a written proposal on how the data will be used in research before access is granted.

Extended data

Zenodo: Ketamine as an adjunctive therapy for major depression - a randomised controlled pragmatic pilot trial (Karma-Dep Trial). <https://doi.org/10.5281/zenodo.4302297>⁴³

This file contains the following data:

- HPRa application protocol version 3.0 pdf.pdf (Original trial protocol)

Reporting guidelines

Zenodo: CONSORT checklist for pilot studies for 'Ketamine as an adjunctive therapy for major depression - a randomised controlled pragmatic pilot trial (Karma-Dep Trial)' <https://doi.org/10.5281/zenodo.4302297>⁴³

Data are available under the terms of the [Creative Commons Attribution 4.0 International license](#) (CC-BY 4.0).

References

1. Hofmann SG, Curtiss J, Carpenter JK, *et al.*: **Effect of treatments for depression on quality of life: a meta-analysis.** *Cogn Behav Ther.* 2017; **46**(4): 265–86.
[PubMed Abstract](#) | [Publisher Full Text](#) | [Free Full Text](#)
2. World Health Organisation: **Depression.** 2018.
[Reference Source](#)
3. World Health Organisation: **Suicide.** 2018.
[Reference Source](#)
4. Chesney E, Goodwin GM, Fazel S: **Risks of all-cause and suicide mortality in mental disorders: a meta-review.** *World Psychiatry.* 2014; **13**(2): 153–60.
[PubMed Abstract](#) | [Publisher Full Text](#) | [Free Full Text](#)
5. Nutt DJ: **Relationship of neurotransmitters to the symptoms of major depressive disorder.** *J Clin Psychiatry.* 2008; **69** Suppl E1: 4–7.
[PubMed Abstract](#)
6. Rush AJ, Trivedi MH, Wisniewski SR, *et al.*: **Acute and longer-term outcomes in depressed outpatients requiring one or several treatment steps: a STAR*D report.** *Am J Psychiatry.* 2006; **163**(11): 1905–17.
[PubMed Abstract](#) | [Publisher Full Text](#)
7. Kurdi MS, Theerth KA, Deva RS: **Ketamine: Current applications in anesthesia, pain, and critical care.** *Anesth Essays Res.* 2014; **8**(3): 283–90.
[PubMed Abstract](#) | [Publisher Full Text](#) | [Free Full Text](#)
8. Zorumski CF, Izumi Y, Mennerick S: **Ketamine: NMDA Receptors and Beyond.** *J Neurosci.* 2016; **36**(44): 11158–64.
[PubMed Abstract](#) | [Publisher Full Text](#) | [Free Full Text](#)
9. Zanos P, Gould TD: **Mechanisms of ketamine action as an antidepressant.** *Mol Psychiatry.* 2018; **23**(4): 801–11.
[PubMed Abstract](#) | [Publisher Full Text](#) | [Free Full Text](#)
10. Williams NR, Heifets BD, Blasey C, *et al.*: **Attenuation of Antidepressant Effects of Ketamine by Opioid Receptor Antagonism.** *Am J Psychiatry.* 2018; **175**(12): 1205–1215.
[PubMed Abstract](#) | [Publisher Full Text](#) | [Free Full Text](#)
11. Marcantoni WS, Akoumba BS, Wassef M, *et al.*: **A systematic review and meta-analysis of the efficacy of intravenous ketamine infusion for treatment resistant depression: January 2009 - January 2019.** *J Affect Disord.* 2020; **277**: 831–841.
[PubMed Abstract](#) | [Publisher Full Text](#)
12. Berman RM, Cappiello A, Anand A, *et al.*: **Antidepressant effects of ketamine in depressed patients.** *Biol Psychiatry.* 2000; **47**(4): 351–4.
[PubMed Abstract](#) | [Publisher Full Text](#)
13. Kishimoto T, Chawla JM, Hagi K, *et al.*: **Single-dose infusion ketamine and non-ketamine N-methyl-D-aspartate receptor antagonists for unipolar and bipolar depression: a meta-analysis of efficacy, safety and time trajectories.** *Psychol Med.* 2016; **46**(7): 1459–72.
[PubMed Abstract](#) | [Publisher Full Text](#) | [Free Full Text](#)
14. Fava M, Freeman MP, Flynn M, *et al.*: **Double-blind, placebo-controlled, dose-ranging trial of intravenous ketamine as adjunctive therapy in treatment-resistant depression (TRD).** *Mol Psychiatry.* 2020; **25**(7): 1592–1603.
[PubMed Abstract](#) | [Publisher Full Text](#) | [Free Full Text](#)
15. Rosenblatt JD, Carvalho AF, Li M, *et al.*: **Oral Ketamine for Depression: A Systematic Review.** *J Clin Psychiatry.* 2019; **80**(3): 18r12475.
[PubMed Abstract](#) | [Publisher Full Text](#)
16. Loo CK, Gálvez V, O'Keefe E, *et al.*: **Placebo-controlled pilot trial testing dose titration and intravenous, intramuscular and subcutaneous routes for ketamine in depression.** *Acta Psychiatr Scand.* 2016; **134**(1): 48–56.
[PubMed Abstract](#) | [Publisher Full Text](#)
17. Hu YD, Xiang YT, Fang JX, *et al.*: **Single i.v. ketamine augmentation of newly initiated escitalopram for major depression: results from a randomized, placebo-controlled 4-week study.** *Psychol Med.* 2016; **46**(3): 623–35.
[PubMed Abstract](#) | [Publisher Full Text](#)
18. Su TP, Chen MH, Li CT, *et al.*: **Dose-Related Effects of Adjunctive Ketamine in Taiwanese Patients with Treatment-Resistant Depression.** *Neuropsychopharmacology.* 2017; **42**(13): 2482–92.
[PubMed Abstract](#) | [Publisher Full Text](#) | [Free Full Text](#)
19. Short B, Fong J, Galvez V, *et al.*: **Side-effects associated with ketamine use in depression: a systematic review.** *Lancet Psychiatry.* 2018; **5**(1): 65–78.
[PubMed Abstract](#) | [Publisher Full Text](#)
20. Wan LB, Levitch CF, Perez AM, *et al.*: **Ketamine safety and tolerability in clinical trials for treatment-resistant depression.** *J Clin Psychiatry.* 2015; **76**(3): 247–52.
[PubMed Abstract](#) | [Publisher Full Text](#)
21. Tweed WA, Minuck M, Mymin D: **Circulatory responses to ketamine anesthesia.** *Anesthesiology.* 1972; **37**(6): 613–9.
[PubMed Abstract](#) | [Publisher Full Text](#)
22. Forster JA, Harrison SC: **Ketamine urography: rising to the challenges of a new condition.** *BJU Int.* 2012; **109**(9): 1277–8.
[PubMed Abstract](#) | [Publisher Full Text](#)
23. Singh JB, Fedgchin M, Daly EJ, *et al.*: **A Double-Blind, Randomized, Placebo-Controlled, Dose-Frequency Study of Intravenous Ketamine in Patients With Treatment-Resistant Depression.** *Am J Psychiatry.* 2016; **173**(8): 816–26.
[PubMed Abstract](#) | [Publisher Full Text](#)
24. Ionescu DF, Bentley KH, Eikermann M, *et al.*: **Repeat-dose ketamine augmentation for treatment-resistant depression with chronic suicidal ideation: A randomized, double blind, placebo controlled trial.** *J Affect Disord.* 2019; **243**: 516–24.
[PubMed Abstract](#) | [Publisher Full Text](#)
25. Shiroma PR, Thuras P, Wels J, *et al.*: **A randomized, double-blind, active placebo-controlled study of efficacy, safety, and durability of repeated vs single subanesthetic ketamine for treatment-resistant depression.** *Transl Psychiatry.* 2020; **10**(1): 206.
[PubMed Abstract](#) | [Publisher Full Text](#) | [Free Full Text](#)
26. Canuso CM, Singh JB, Fedgchin M, *et al.*: **Efficacy and Safety of Intranasal Esketamine for the Rapid Reduction of Symptoms of Depression and Suicidality in Patients at Imminent Risk for Suicide: Results of a Double-Blind, Randomized, Placebo-Controlled Study.** *Am J Psychiatry.* 2018; **175**(7): 620–30.
[PubMed Abstract](#) | [Publisher Full Text](#)
27. Daly EJ, Singh JB, Fedgchin M, *et al.*: **Efficacy and Safety of Intranasal Esketamine Adjunctive to Oral Antidepressant Therapy in Treatment-Resistant Depression: A Randomized Clinical Trial.** *JAMA Psychiatry.* 2018; **75**(2): 139–48.
[PubMed Abstract](#) | [Publisher Full Text](#) | [Free Full Text](#)
28. Thabane L, Ma J, Chu R, *et al.*: **A tutorial on pilot studies: the what, why and how.** *BMC Med Res Methodol.* 2010; **10**: 1.
[PubMed Abstract](#) | [Publisher Full Text](#) | [Free Full Text](#)
29. APA: **Diagnostic and statistical manual of mental disorders (5th ed).** Arlington, VA: American Psychiatric Publishing.; 2013.
[Publisher Full Text](#)
30. Sheehan DV, Lecrubier Y, Sheehan KH, *et al.*: **The Mini-International Neuropsychiatric Interview (M.I.N.I.): the development and validation of a structured diagnostic psychiatric interview for DSM-IV and ICD-10.** *J Clin Psychiatry.* 1998; **59** Suppl 20: 22–33;quiz 4-57.
[PubMed Abstract](#)
31. Beckham EE, Leber WR: **Hamilton Rating Scale for Depression, ECDEU version used in the Treatment of Depression Collaborative Research Program.** In: *Handbook of Depression-Treatment, Assessment and Research.* Homewood: The Dorsey Press, 1985; 992–5.
32. Rush AJ, Bernstein IH, Trivedi MH, *et al.*: **An evaluation of the quick inventory of depressive symptomatology and the hamilton rating scale for depression: a sequenced treatment alternatives to relieve depression trial report.** *Biol Psychiatry.* 2006; **59**(6): 493–501.
[PubMed Abstract](#) | [Publisher Full Text](#) | [Free Full Text](#)
33. Fekadu A, Wooderson S, Donaldson C, *et al.*: **A multidimensional tool to quantify treatment resistance in depression: the Maudsley staging method.** *J Clin Psychiatry.* 2009; **70**(2): 177–84.
[PubMed Abstract](#) | [Publisher Full Text](#)
34. Bremner JD, Krystal JH, Putnam FW, *et al.*: **Measurement of dissociative states with the Clinician-Administered Dissociative States Scale (CADSS).** *J Trauma Stress.* 1998; **11**(1): 125–36.
[PubMed Abstract](#) | [Publisher Full Text](#)
35. Hedlund V: **The brief psychiatric rating scale (BPRS): a comprehensive review.** *Journal of operational psychiatry.* 1980; **11**(1): 48–65.
[Reference Source](#)
36. Young RC, Biggs JT, Ziegler VE, *et al.*: **A rating scale for mania: reliability, validity and sensitivity.** *Br J Psychiatry.* 1978; **133**: 429–35.
[PubMed Abstract](#) | [Publisher Full Text](#)
37. Wisniewski SR, Rush AJ, Balasubramani GK, *et al.*: **Self-rated global measure of the frequency, intensity, and burden of side effects.** *J Psychiatr Pract.* 2006; **12**(2): 71–9.
[PubMed Abstract](#) | [Publisher Full Text](#)
38. Nasreddine ZS, Phillips NA, Bédirian V, *et al.*: **The Montreal Cognitive Assessment, MoCA: a brief screening tool for mild cognitive impairment.** *J Am Geriatr Soc.* 2005; **53**(4): 695–9.
[PubMed Abstract](#) | [Publisher Full Text](#)
39. Finnegan M, Galligan T, Ryan K, *et al.*: **Ketamine Versus Midazolam for Depression Relapse Prevention Following Successful Electroconvulsive Therapy: A Randomized Controlled Pilot Trial.** *J ECT.* 2019; **35**(2): 115–21.
[PubMed Abstract](#) | [Publisher Full Text](#)
40. McGrory CL, Ryan KM, Gallagher B, *et al.*: **Vascular endothelial growth factor and pigment epithelial-derived factor in the peripheral response to ketamine.** *J Affect Disord.* 2020; **273**: 380–383.
[PubMed Abstract](#) | [Publisher Full Text](#)
41. Moore CG, Carter RE, Nietert PJ, *et al.*: **Recommendations for planning pilot studies in clinical and translational research.** *Clin Transl Sci.* 2011; **4**(5): 332–7.
[PubMed Abstract](#) | [Publisher Full Text](#) | [Free Full Text](#)
42. Grunebaum MF, Ellis SP, Keilp JG, *et al.*: **Ketamine versus midazolam in bipolar depression with suicidal thoughts: A pilot midazolam-controlled randomized clinical trial.** *Bipolar Disord.* 2017; **19**(3): 176–183.
[PubMed Abstract](#) | [Publisher Full Text](#)
43. Gallagher B: **Ketamine as an adjunctive therapy for major depression - a randomised controlled pragmatic pilot trial (Karma-Dep Trial).** 2020.
<http://www.doi.org/10.5281/zenodo.4302297>

Open Peer Review

Current Peer Review Status:  

Version 1

Reviewer Report 04 January 2022

<https://doi.org/10.21956/hrbopenres.14310.r31053>

© 2022 McInerney S. This is an open access peer review report distributed under the terms of the [Creative Commons Attribution License](#), which permits unrestricted use, distribution, and reproduction in any medium, provided the original work is properly cited.



Shane McInerney

Department of Psychiatry, National University of Ireland, Galway, Ireland

This is an interesting pilot study examining the effect of intravenous ketamine compared to a placebo control on a depressed population of inpatients. The study is well designed and the paper is well written.

The results did not find a statistically significant difference in favour of ketamine. The sample size was acknowledged as being small and some patients were unable to tolerate the treatment. As patients were hospitalised in a private psychiatric hospital noted for its availability of a range of psychosocial treatments, the benefit of this additional care would need to be clarified in a larger study.

Overall, the paper suggests the feasibility of a pragmatic trial of adjunctive serial ketamine infusions for hospitalised depression by this group.

Is the work clearly and accurately presented and does it cite the current literature?

Yes

Is the study design appropriate and is the work technically sound?

Yes

Are sufficient details of methods and analysis provided to allow replication by others?

Yes

If applicable, is the statistical analysis and its interpretation appropriate?

Yes

Are all the source data underlying the results available to ensure full reproducibility?

Yes

Are the conclusions drawn adequately supported by the results?

Yes

Competing Interests: No competing interests were disclosed.

Reviewer Expertise: Depression, cognition.

I confirm that I have read this submission and believe that I have an appropriate level of expertise to confirm that it is of an acceptable scientific standard.

Reviewer Report 21 December 2020

<https://doi.org/10.21956/hrbopenres.14310.r28551>

© 2020 Kirov G. This is an open access peer review report distributed under the terms of the [Creative Commons Attribution License](#), which permits unrestricted use, distribution, and reproduction in any medium, provided the original work is properly cited.



George Kirov

MRC Centre for Neuropsychiatric Genetics and Genomics, Cardiff University, Cardiff, UK

Gallagher et al report on a trial comparing 4 weekly infusions of ketamine v.s. midazolam for the treatment of patients hospitalised with a depressive episode. This is a pilot study, aiming mostly at finding out whether such a trial can be conducted on a larger scale. About 20% of eligible patients consented and the majority of them completed the study, therefore a larger trial is clearly feasible.

The study raises a number of additional questions. The rapid antidepressant effect of single dose ketamine reported in the literature was not replicated, according to the authors, as there were no differences from the control substance. I think the truth is somewhere in the middle. The reduction in the HAMD scores were quite impressive for a population of hospitalised patients, who were mostly treatment resistant, and some of whom even required ECT. Midazolam is not a placebo and benzodiazepines are very effective drugs before tolerance develops. I am not surprised that depressed patients given infusions of midazolam would show improvements in symptoms, and some of these are possibly related to anxiety and sleep. The way the conclusions sound now gives an impression that i.v. ketamine had no effect whatsoever, which is not my take of these results. On the other hand, the ketamine group did not demonstrate what would be described as dramatic improvement in depression, as claimed by some authors, in fact the improvements are modest and the remission rates were only around 20-30%. These are actually the rates reported in other studies, so the current study, in my view, replicates previous results and gives a realistic picture of what to expect from ketamine infusions. This includes a very comprehensive account of side effects and the general management of such patients.

One other suggestion is to cite the recent review by Marcantoni et al¹. (sorry, just out). This review lists more research projects than have been cited by the current authors. While there could be reasons they decided not to cite some of the additional papers, I felt that they should give a better account of the previous research, which is summarised by Marcantoni et al¹.

In summary, this is a very clear study which gives a realistic view of the acute antidepressant effects of ketamine.

References

1. Marcantoni WS, Akoumba BS, Wassef M, Mayrand J, et al.: A systematic review and meta-analysis of the efficacy of intravenous ketamine infusion for treatment resistant depression: January 2009 - January 2019. *J Affect Disord.* 2020; **277**: 831-841 [PubMed Abstract](#) | [Publisher Full Text](#)

Is the work clearly and accurately presented and does it cite the current literature?

Partly

Is the study design appropriate and is the work technically sound?

Yes

Are sufficient details of methods and analysis provided to allow replication by others?

Yes

If applicable, is the statistical analysis and its interpretation appropriate?

Yes

Are all the source data underlying the results available to ensure full reproducibility?

Yes

Are the conclusions drawn adequately supported by the results?

Yes

Competing Interests: No competing interests were disclosed.

Reviewer Expertise: ECT; psychiatric genetics

I confirm that I have read this submission and believe that I have an appropriate level of expertise to confirm that it is of an acceptable scientific standard.
