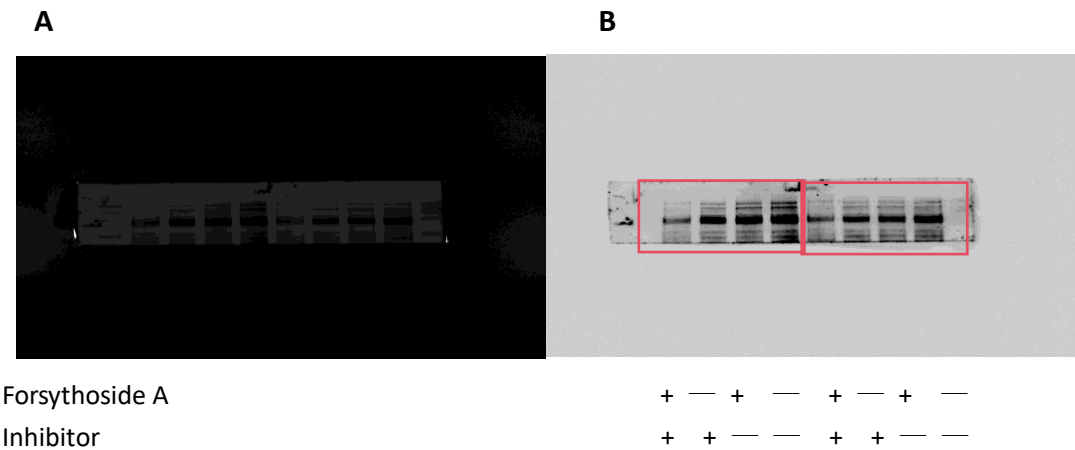


Figure S1

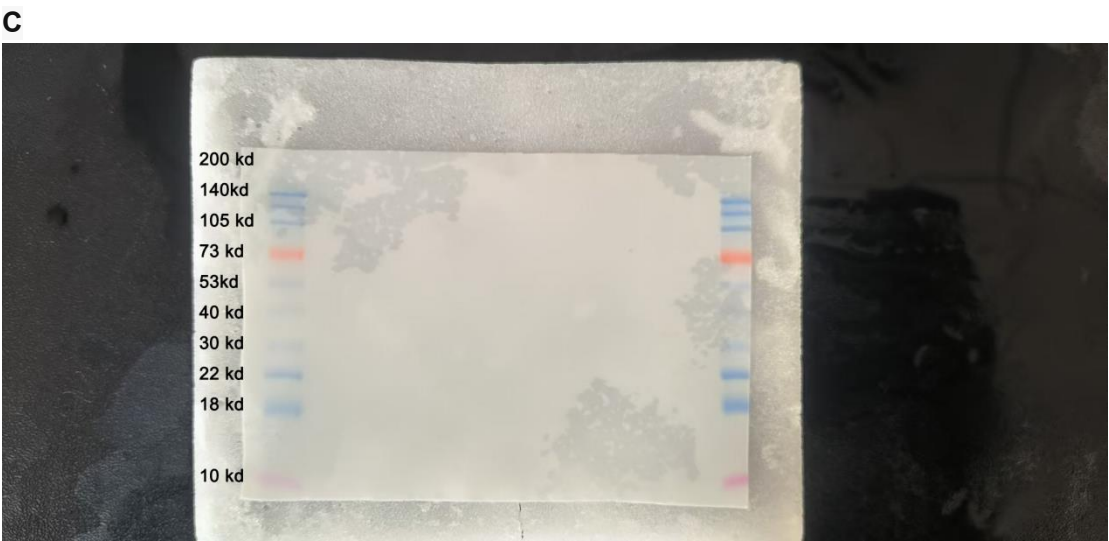
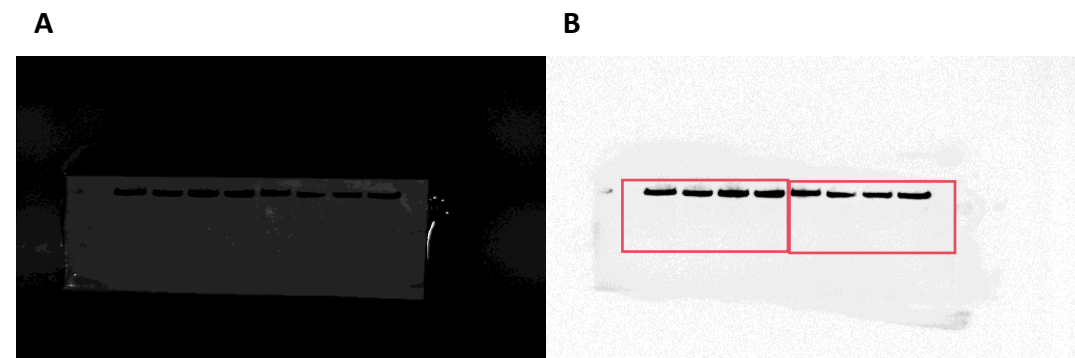
Repeat 1 and 2

LOXL2 99 kd

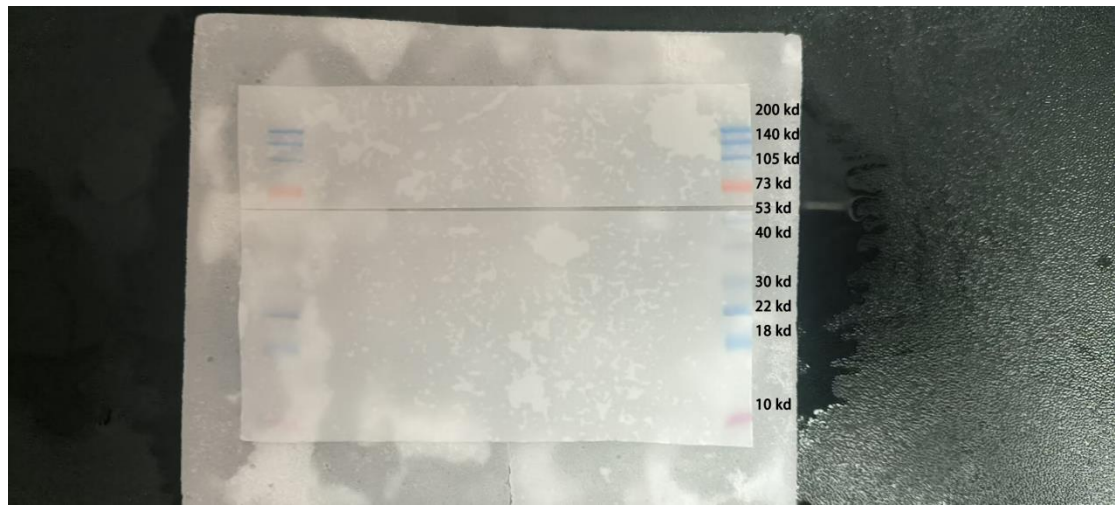
(From right to left)



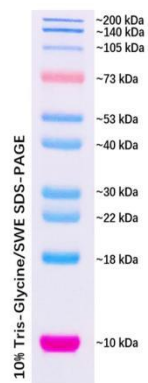
β -actin 42 kd



D



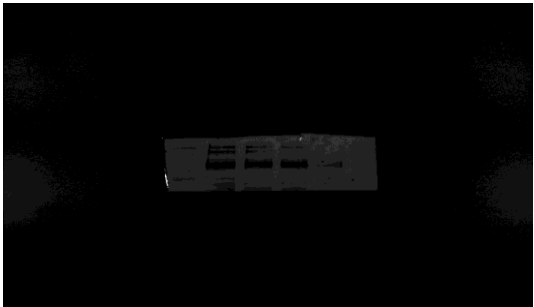
E



Repeat 3

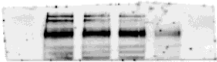
LOXL2 99 kd

A



B

(From left to right)



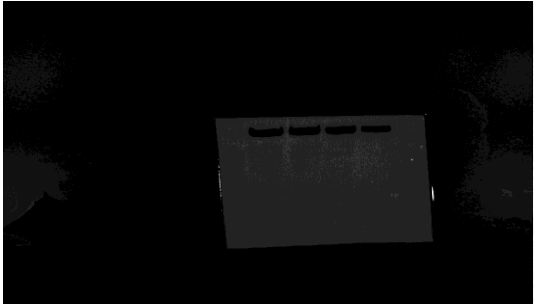
Forsythoside A

Inhibitor

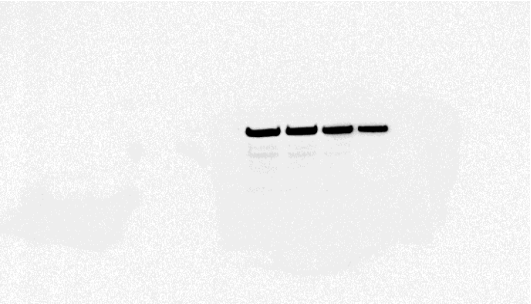
β -actin 42 kd

— + — +
— — + +

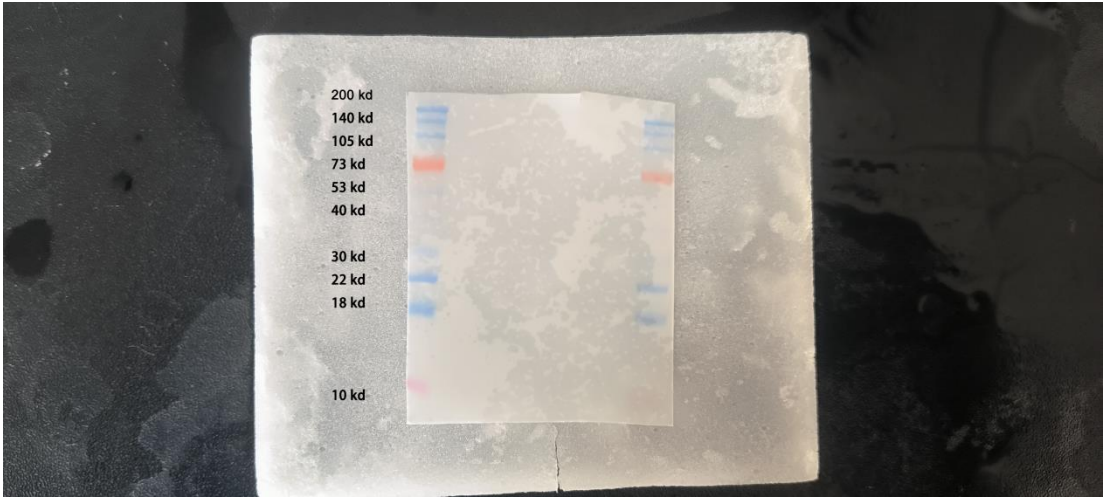
A



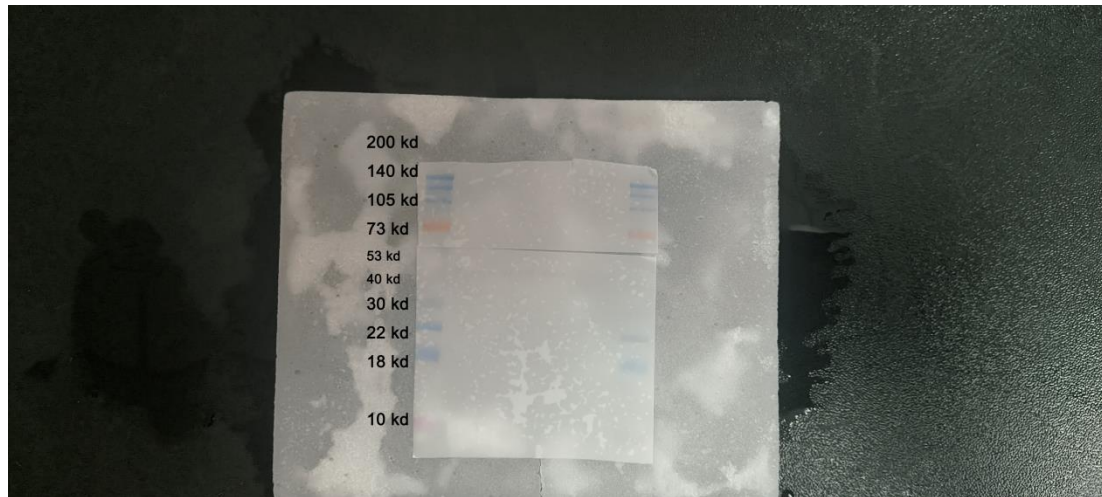
B



C



D



Complete three-time Western blot image in Fig. 10. A is the strip map with maker, B is the sample map, C is the original whole film and D is the whole film after cropping and piecing together and E is the maker used.