

[ PICTURES IN CLINICAL MEDICINE ]

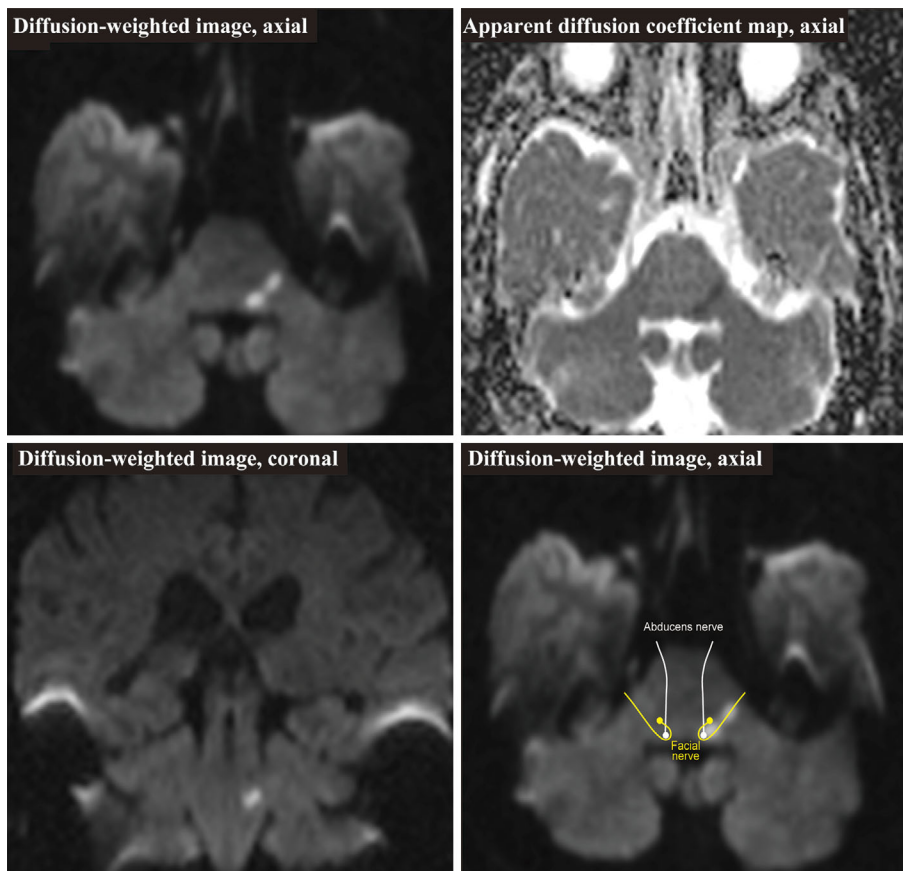
## Combined Abducens and Peripheral Facial Nerve Palsy

Kazuto Tsukita<sup>1,2</sup>, Haruhi Sakamaki-Tsukita<sup>1</sup> and Toshihiko Suenaga<sup>1</sup>

**Key words:** abducens nerve palsy, peripheral facial nerve palsy, acute ischemic stroke, the pons

(Intern Med 57: 3223-3224, 2018)

(DOI: 10.2169/internalmedicine.1139-18)



**Picture.**

A 49-year-old man with diabetes mellitus presented with a sudden-onset of horizontal diplopia followed by left facial weakness a day after this onset. A physical examination revealed impaired left eye abduction and difficulties closing the left eye, raising the left eyebrow, and lifting the left corner of the mouth, which suggested combined left abducens and peripheral facial nerve palsy. On admission, head computed tomography did not reveal any lesions. However, brain magnetic resonance imaging (MRI) revealed a linear hyper-

intense lesion in the left pons with decreased apparent diffusion coefficient values on diffusion-weighted imaging, suggesting acute ischemic stroke (Picture). Treatment with antiplatelet and lipid-lowering drugs resolved the symptoms completely in three months. The combination of abducens and peripheral facial nerve palsy strongly indicates a lesion in the pons, since the abducens and facial nerves run close together there (Picture) (1, 2). The prompt and detailed investigation of a pontine lesion including MRI is crucial for

<sup>1</sup>Department of Neurology, Tenri Hospital, Japan and <sup>2</sup>Department of General Internal Medicine, Tenri Hospital, Japan  
Received: March 6, 2018; Accepted: March 15, 2018; Advance Publication by J-STAGE: June 6, 2018  
Correspondence to Dr. Kazuto Tsukita, kazusan@kuhp.kyoto-u.ac.jp

achieving a good outcome.

**The authors state that they have no Conflict of Interest (COI).**

### **References**

1. Roh JK, Kim BK, Chung JM. Combined peripheral facial and abducens nerve palsy caused by caudal tegmental pontine infarction.

Eur Neurol **41**: 99-102, 1999.

2. Antonio-Santos AA, Eggenberger ER. Concomitant sixth nerve and seventh nerve palsies. J Neurol Neurosurg Psychiatry **81**: 494, 2010.

The Internal Medicine is an Open Access journal distributed under the Creative Commons Attribution-NonCommercial-NoDerivatives 4.0 International License. To view the details of this license, please visit (<https://creativecommons.org/licenses/by-nc-nd/4.0/>).

---

© 2018 The Japanese Society of Internal Medicine  
*Intern Med 57: 3223-3224, 2018*