

ORIGINAL ARTICLE

Outcome of patients activating an unrelated donor search: the impact of transplant with reduced intensity conditioning in a large cohort of consecutive high-risk patients

A Rambaldi¹, A Bacigalupo², R Fanin³, F Ciceri⁴, F Bonifazi⁵, M Falda⁶, G Lambertenghi-Delilieri⁷, F Benedetti⁸, B Bruno⁶, P Corradini⁹, PE Alessandrino¹⁰, P Iacopino¹¹, W Arcese¹², R Scimè¹³, R Raimondi¹⁴, S Sica¹⁵, L Castagna¹⁶, T Lamparelli², R Oneto², L Lombardini¹⁷, S Pollichieni¹⁸, A Algarotti¹, A Carobbio¹, N Sacchi¹⁸ and A Bosi¹⁷ on behalf of Gruppo Italiano Trapianto di Midollo Osseo, GITMO

An unrelated donor (UD) search was submitted to the Italian Bone Marrow Donor Registry between February 2002 and December 2004, for 326 consecutive patients with hematological malignancies, eligible for a reduced intensity conditioning (RIC) UD transplant. Only two regimens were allowed: melphalan, alemtuzumab, fludarabine and total body irradiation of 200 cGy (regimen A) and thiotepe, cyclophosphamide, anti-thymocyte globulin (regimen B). The outcome of patients receiving an UD transplant ($n = 121$) was compared with patients who did not find a donor ($n = 205$), in a time dependent analysis, correcting for time to transplant. The median follow up from activation of donor search was 6.1 years. UD transplant was associated with a significantly better survival in patients with acute leukemia and non-Hodgkin's lymphoma (NHL) whereas only a favorable trend was documented for Hodgkin's disease. No survival benefit was registered for chronic leukemias. The outcome of the two different conditioning regimens was comparable, in terms of survival, transplant-related mortality and graft versus host disease. In conclusion, finding an UD and undergoing a RIC transplant significantly improves survival of patients with acute leukemia and NHL. The advantage is less clear for HD and chronic leukemias. The role of different conditioning regimens remains to be elucidated by prospective clinical trials.

Leukemia (2012) 26, 1779–1785; doi:10.1038/leu.2012.55

Keywords: unrelated donor search; allogeneic transplantation; reduced intensity conditioning

INTRODUCTION

For many patients with advanced hematological malignancies, allogeneic hematopoietic stem cells transplantation may represent an effective, potentially curative treatment modality. Unfortunately, most patients lack a human leukocyte antigen compatible family donor so that the possibility to identify an unrelated donor (UD) may be crucial. However, even when an UD is found, the clinical outcome after allogeneic transplantation may be poor for patients with medical comorbidities or advanced age or advanced disease such as those relapsed after a previous autologous transplant. Over the past years, for these patients, reduced intensity conditioning (RIC) programs have been developed and widely used and they have contributed significantly to reducing the mortality rate after allogeneic transplantation.¹ Although this approach may be effective, the outcome of many patients is still unsatisfactory because the rate of relapse both in myeloid^{2,3} and lymphoid malignancies^{4,5} and the transplant-related mortality are still relevant. In addition, the time needed to identify a donor may be remarkably different from patient to patient.⁶ All in all, it is still difficult to fully appreciate the real impact on survival offered by these transplant procedures to an unselected group of patients from the start of the UD search.

For this reason, we analyzed the clinical outcome of an unselected consecutive series of patients for whom an UD search was activated between February 2002 and December 2004 with the intent to perform an allogeneic hematopoietic stem cells transplantation after a RIC regimen.

PATIENTS AND METHODS

Eligibility criteria

Eligible to this study were 326 consecutive patients for whom the UD search activation was recorded by the Italian Bone Marrow Donor Registry, between 1st February 2002 and 31st December 2004. The inclusion diagnostic criteria were the following: (1) Patients with a diagnosis of acute myeloid leukemia, acute lymphoid leukemia, chronic myeloid leukemia, myelodysplastic syndrome (MDS) and myelofibrosis (MMF), who were considered candidates to receive an allogeneic unrelated transplants only after RIC regimens because of their advanced age (55–65 years) or the presence of concurrent medical comorbidities. (2) Patients of any age with the following diagnosis: Hodgkin's disease (HD) relapsed after high-dose chemotherapy or relapsed after 1 year from chemotherapy course and not eligible to high-dose chemotherapy because of mobilization failure. Follicular non-Hodgkin's lymphoma (NHL) relapsed after two courses of

¹The Hematology and Bone Marrow Transplant Units of Ospedali Riuniti di Bergamo, Bergamo, Italy; ²Ospedale San Martino, Genova, Italy; ³Azienda Ospedaliera, Università di Udine, Udine, Italy; ⁴Ospedale San Raffaele di Milano, Milano, Italy; ⁵Policlinico Sant'Orsola, Università di Bologna, Bologna, Italy; ⁶Ospedale San Giovanni Battista, Università di Torino, Torino, Italy; ⁷Ospedale Maggiore IRCCS, Università di Milano, Milano, Italy; ⁸Policlinico GB Rossi e Università di Verona, Verona, Italy; ⁹Istituto Nazionale dei Tumori e Università di Milano, Milano, Italy; ¹⁰Policlinico San Matteo e Università di Pavia, Pavia, Italy; ¹¹Ospedale Bianchi, Reggio Calabria, Italy; ¹²Policlinico Università di Tor Vergata, Roma, Italy; ¹³Ospedale Cervello, Palermo, Italy; ¹⁴Ospedale San Bortolo, Vicenza, Italy; ¹⁵Policlinico Gemelli Università Cattolica, Roma, Italy; ¹⁶Istituto Clinico Humanitas, Rozzano, Italy; ¹⁷Azienda Ospedaliera di Careggi e Università di Firenze, Firenze, Italy and ¹⁸Italian Bone Marrow Donor Registry, Genova, Italy. Correspondence: Professor A Rambaldi, Divisione di Ematologia, Ospedali Riuniti Bergamo, Largo Barozzi 1, Bergamo, BG 24128, Italy.

E-mail: arambaldi@ospedaliiriuniti.bergamo.it

Received 8 February 2012; accepted 10 February 2012; accepted article preview online 1 March 2012; advance online publication, 3 April 2012

standard chemotherapy or high-dose chemotherapy; mantle cell NHL relapsed after one course of standard chemotherapy or high-dose chemotherapy, or lymphoplasmacytic and marginal zone cell NHL relapsed after two courses of standard chemotherapy or high-dose chemotherapy. In addition, patients with B-cell chronic lymphocytic leukemia relapsed after high-dose chemotherapy, mycosis fungoides in advanced phase (> stage III A) or in chemosensitive relapse after two chemotherapy courses and Sezary's syndrome in chemosensitive relapse after one chemotherapy course. At time of analysis, risk definition for each patient was calculated according to the EBMT score. High-risk patients were defined those with a score ≥ 6 .⁷

Donor selection

Donor selection was based on molecular high-resolution typing (4 digits) of the human leukocyte antigen gene loci class I (HLA-A, B and C) and class II (DRB1). In the absence of an 8/8 identical donor, one allele mismatched (class I or II) donor was allowed.

Conditioning regimens

Patients for whom a donor was found, could be prepared for allogeneic transplant using only two preparative regimens: program A, based on the combination of melphalan 30 mg/m², alemtuzumab (Genzyme Ltd, Haverhill, Suffolk UK) 80 mg, fludarabine 90 mg/m² and total body irradiation 200 cGy;⁸ program B, based on thiotepa 10 mg/kg, cyclophosphamide 100 mg/kg and anti-thymocyte globulin (Genzyme Ltd, IDA Industrial Park, Waterford, Ireland) 7.5 mg/kg.⁹

All patients were treated under local institutional review board guidelines and provided written informed consent for the treatment and for the use of medical information for research.

Statistical methods and definitions

Comparison between proportions was performed using χ^2 and Fisher's exact tests. Differences in median times or ages were tested with the Mann-Whitney two sample statistics. Cox models were performed considering UD transplant as time-varying covariate, in order to take into account the bias of patients who were not grafted because of death during the UD search. Multivariable models were performed on the overall population and according to different type of diagnosis, including age, sex and disease risk that was defined high for patients over 60 and for patients who had a previous autologous transplant. Overall survival (OS) was calculated from the UD search activation until deaths from any cause and surviving patients were censored at last follow up, using Kaplan-Meier product limit method. Non-relapse mortality and cumulative incidence of relapse were estimated using competing risks analysis, as far as the cumulative incidence of acute and chronic graft versus host disease (GVHD), considering death without GVHD as competing risks. Cox proportional hazard models with time-varying covariate were established to identify independent prognostic factors to OS. Variables included in the models were sex, age, inclusion diagnostic criteria (1 or 2), source of stem cell (peripheral blood or bone marrow), disease status at transplant (standard phase for patients with at least a 2nd complete remission achieved and high-risk phase for partial remissions, more than 3rd complete remissions, active diseases or relapses), time from donor search activation to transplant (more than 5 months or less), engraftment (yes/no, time-dependent variable), acute and chronic GVHD (yes/no, time-dependent variable).

RESULTS

UD search outcome

The main clinical findings of the 326 patients for whom a donor search was activated are summarized in Table 1: 121 patients (37%) were actually transplanted at a median interval from search activation of 169 days (range: 68–772). Of the 205 patients, who were not transplanted as planned, 192 (59%) stopped the UD search because of death ($n=100$), ineligibility due to disease

Table 1. Characteristics of 326 unrelated donor search activation

<i>Patients, N</i>	326
Median age, years (range)	50 (15–66)
Sex, M/F (%)	193/133 (59/41)
<i>Diagnosis, N (%)</i>	
ALL	5 (2)
AML	62 (19)
CML	11 (3)
MDS	20 (6)
MMF	10 (3)
NHL	73 (22)
B-CLL	34 (10)
HD	104 (32)
MF/SS	7 (2)
<i>MUD transplants performed, N (%)</i>	121 (37)
Days from search activation to transplant, median (range)	169 (68–772)
<i>Stopped searches, N (%)</i>	192 (59)
Days from search activation to stop, median (range)	270 (1–74 225)
<i>Reason for search interruption</i>	
Death of the patient	100 (52)
No longer eligible	34 (18)
Donor not available	11 (6)
Withdrawn consent	8 (4)
Another protocol	39 (20)
Autologous transplant	1
Allogeneic transplant with cord blood	3
Allogeneic transplant with related mismatch donor	15
Allogeneic transplant with haploidentical donor	2
Other unspecified treatments	18
<i>Ongoing searches, N (%)</i>	13 (4)
Days from search activation to last visit, median (range)	2220 (1305–2691)

Abbreviations: ALL, acute lymphoid leukemia; AML, acute myeloid leukemia; B-CLL, B-cell chronic lymphocytic leukemia; CML, chronic myeloid leukemia; F, female; HD, Hodgkin's disease; M, male; MDS, myelodysplastic Syndrome; MF, mycosis fungoides; MMF, myelofibrosis; MUD, marrow unrelated donor; NHL, non-Hodgkin's lymphoma; SS, Sezary's syndrome.

progression ($n=34$), lack or unlikelihood to find a donor ($n=11$), consent withdrawn ($n=8$), choice of an alternative program ($n=39$). This latter group included an autologous transplant ($n=1$) or allogeneic transplant with a related mismatched ($n=15$), a cord blood ($n=3$), or a haploidentical donor ($n=2$) and other unspecified treatments ($n=18$). For 13 patients a donor search is still ongoing (Figure 1). The characteristics of patients of this study are summarized in Tables 1 and 2. Patients' sex and median age were not different between patients who received an allogeneic transplant from an UD and those treated alternatively ($P=0.25$). HD and NHL as well as acute leukemias were the most common diagnosis. The chosen stem cell source for transplant was peripheral blood in 67 cases (55%) and bone marrow in the other 54 (45%). The majority of patients (80%) were defined at high risk of death according to EBMT criteria.⁷

Transplants

For patients undergoing transplantation from an UD, neutrophil count recovered to $>0.5 \times 10^9/l$ after a median of 17 days (range, 6–34). Both regimens induced a sustained engraftment in almost 90% of patients. The cumulative incidence of acute GVHD grade II–IV and III–IV, was, respectively, 44% (95% CI, 35–54%) and 20%

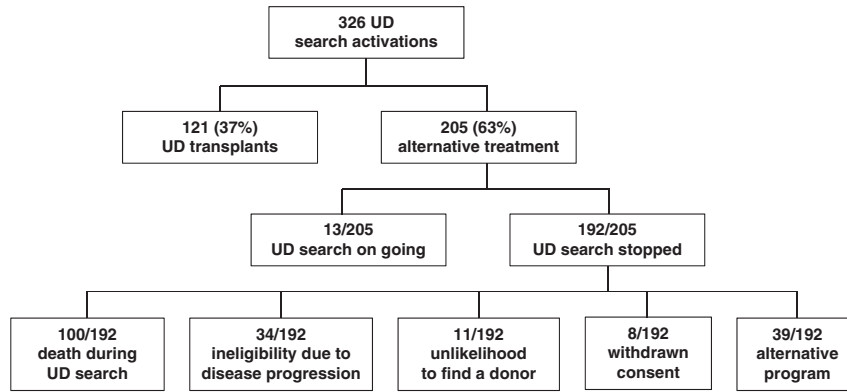


Figure 1. CONSORT diagram of patient flow and results of UD search activation.

Table 2. Clinical findings at transplant of patients undergoing allogeneic unrelated transplant

<i>Patients, N</i>	121
Median age, years (range)	49 (17–65)
Sex M/F (%)	69/52 (57/43)
<i>Diagnosis</i>	
ALL	2
AML	25
CML	3
MDS	5
MMF	6
NHL	28
B-CLL	9
HD	41
MF/SS	2
<i>Conditioning regimens (%)</i>	
TBI+Alem+Flud+Melph	50 (41)
Thiotepa+Cyclophamide+ATG	71 (59)
<i>Source of stem cell (%)</i>	
BM	54 (45)
PB	67 (55)
<i>Disease status at transplant (%)</i>	
Standard phase	41 (34)
High-risk phase	80 (66)
Years of follow up, median (range)	2.43 (0.35–8.36)

Abbreviations: Alem, alemtuzumab; ALL, acute lymphoid leukemia; AML, acute myeloid leukemia; ATG, anti-thymocyte globulin; B-CLL, B-cell chronic lymphocytic leukemia; BM, bone marrow; CML, chronic myeloid leukemia; F, female; Flud, fludarabine; HD, Hodgkin's disease; M, male; MDS, myelodysplastic Syndrome; Melph, melphalan; MF, mycosis fungoides; MMF, myelofibrosis; NHL, non-Hodgkin's lymphoma; PB, peripheral blood; SS, Sezary's syndrome; TBI, total body irradiation.

(95% CI, 13–30%; Figure 2, panel a). The median time to onset of acute GVHD was 40 days after transplantation (range, 12–197). The cumulative incidence of chronic GVHD was 25% (95% CI, 18–34%) with the extensive form occurring in 9% of patients (95% CI, 5–16%; Figure 2, panel b). The median time to onset of chronic GVHD was 115 days after transplantation (range, 90–481). The cumulative incidence of relapse and non-relapse mortality was 33% and 35%, respectively (Figure 3). According to different diagnoses, relapse and non-relapse mortality were, respectively, 42% and 34% for acute leukemias, 32% and 38% for NHL, 34% and 24% for HD, and 16% and 43% for chronic myeloid leukemia, MDS and MMF (data not shown).

UD transplantation versus other treatment

With a median follow up of 2.43 years from the activation of an UD search, the 5-year OS was 39% (95% CI, 30–47%) for patients undergoing an UD transplant and 19% (95% CI, 14–25%) for patients receiving any alternative treatment (Figure 4). To overcome the bias of time to transplant, the therapeutic efficacy of transplant was tested in a multivariable Cox time-dependent model (Table 3). With this approach, we could evaluate the results of multivariate adjusted estimates as to the impact of unrelated transplant on survival in the whole setting and according to the different diagnoses. When considering the whole cohort of 326 patients, an unrelated transplant was not associated with a significantly reduced risk of death (hazard ratio (HR) = 0.85, 95% CI, 0.65–1.10). When the analysis was performed separately for different diagnoses, a significant survival advantage with unrelated transplant was shown for patients with acute leukemias (HR = 0.60, $P = 0.049$) and NHL (HR = 0.47, $P = 0.008$), whereas only a favorable trend was observed for HD patients (HR = 0.67, $P = 0.136$; Table 3 and Figure 5). No benefit was evident for patients with chronic myeloid leukemia, MDS, MMF and B-cell chronic lymphocytic leukemia.

By a multivariable model for the prediction of OS (Table 4), a significant decrease of the risk of death was independently associated with a successful engraftment (HR = 0.29, 95% CI, 0.13–0.64, $P = 0.002$) and with the incidence of chronic GVHD (HR = 0.47, 95% CI, 0.24–0.89, $P = 0.02$). No differences were observed between patients receiving conditioning regimens A or B.

The event free survival at 5 years for the whole patients' cohort receiving an unrelated transplant was 29% (data not shown). Risk factors predicting event free survival and OS showed the same associations and again, no significant difference was observed between patients treated with either conditioning regimen (data not shown). In acute leukemia and NHL patients the shape of OS and event free survival curves were almost identical, indicating the absence of further significant therapeutic options, in case of disease relapse after allogeneic transplantation. In the case of HD, the event free survival and OS curves diverged, indicating that many patients could benefit from additional therapeutic strategies in case of relapse after allogeneic transplantation (data not shown).

DISCUSSION

The current study was performed to investigate the survival of patients for whom an allogeneic transplantation with an UD was planned and the search of such a donor was formally activated at the Italian Bone Marrow Donor Registry. The main focus of the

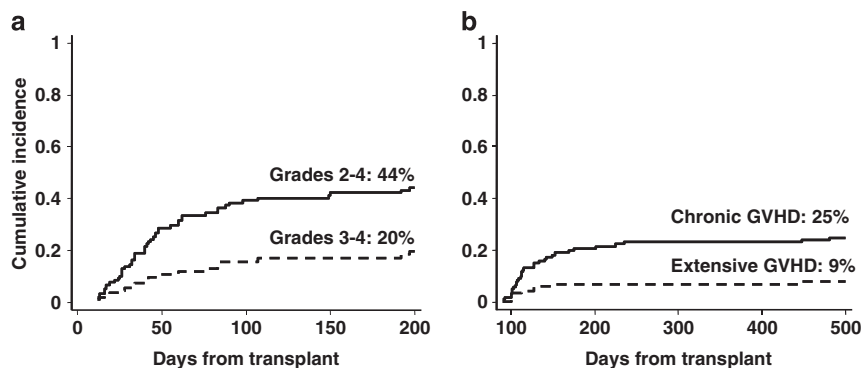


Figure 2. Cumulative incidence of acute (a) and chronic (b) graft versus host disease in patients undergoing unrelated transplant.

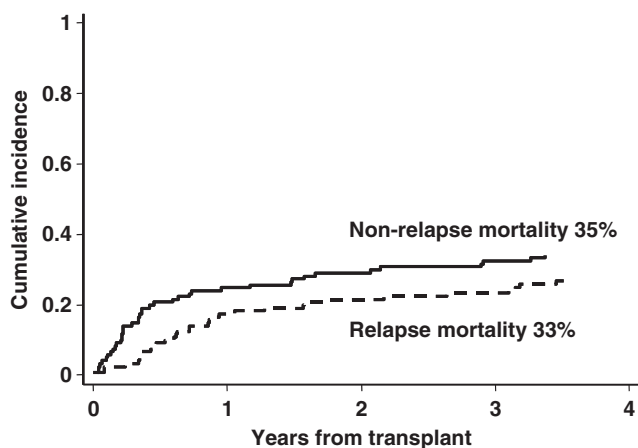


Figure 3. Crude cumulative incidence of relapse and transplant-related mortality in the whole patients cohort ($N=121$) undergoing unrelated transplant.

study was to compare the clinical outcome of the patients who actually received an unrelated allogeneic transplant, with the outcome of patients for whom the transplant was not performed because of the lack of a suitable donor or any other reasons. The time of the UD search activation, according to predefined eligibility criteria, could be considered as a formal declaration of intent to treat. This fact allowed us to compare the outcome of patients undergoing the transplant or not and to analyze the main outcomes of the whole patient population with less selection bias. The choice of a RIC regimen was *a priori* determined because patients were unfit for conventional transplants because of age, advanced disease or comorbidities, or because they had a diagnosis of HD or NHL or other chronic lymphoid malignancies in a very advanced clinical phase. The planned transplant program was performed in 37% of patients who started the donor search and this can be considered a reasonable result when considering the international registries at the time (2002–2004) this program was carried out. The long-term follow up of this study confirms that an unrelated allogeneic transplant after a RIC regimen may represent a curative option for many patients otherwise ineligible to a conventional allogeneic transplant or with advanced lymphomas. Overall, the 5-year survival of the 121 patients receiving an unrelated transplant (39%) seems to be superior when compared with that of similar patients who were not grafted (19%). However, a simple direct comparison of the two groups of patients is not correct for at least two main obvious selection biases. First, the two groups were defined prospectively as such when the donor search was activated, and most importantly, the transplant group would include patients surviving long enough for a donor to be available. On the other hand an undue

proportion of bad prognosis patients would be assigned to the non-transplant group only because they did not survive long enough to be grafted. In our case, treatment was assigned to the patient by the availability of a suitable donor, which was an external, time-dependent factor, not controlled by the study. Therefore, the use of a time-dependent indicator in multivariable models allowed us to correctly account for the mechanism of treatment allocation. Accordingly, such an appropriate Cox time-dependent analysis was performed and clearly indicates that a true survival benefit could be demonstrated for patients with a diagnosis of acute leukemia and NHL but not for others. Although it is obvious that for the few chronic myeloid leukemia patients enrolled into this study the availability of tyrosine kinase inhibitors has dramatically changed the therapeutic scenario^{10–12} for other diseases the interpretation of our results is more complex. Overall, it is likely that, although not curative, effective alternative approaches, may be currently available for patients with an advanced B-cell chronic lymphocytic leukemia¹³ or HD¹⁴ and may not be inferior to an unrelated allogeneic transplant, at least in terms of OS. In addition, although allogeneic transplantation represents a possible definitive curative option for patients with MMF¹⁵ and MDS¹⁶ it is plausible that, in the absence of an accurate risk oriented patient selection, a survival advantage of the transplant over an appropriate supportive care may be difficult to demonstrate.¹⁷ Nonetheless, the lack of a clear cut benefit on survival observed in patients with MMF, MDS or HD may have different explanations. The first obvious possibility relies on the fact that given the relatively low number of these patients and the very advanced phase of their disease even an active and potentially curative therapeutic approach such as the allogeneic transplantation¹⁸ could fail to demonstrate an impact on survival. A second possibility may be related to the reduced intensity of the two conditioning regimens, which were designed to minimize transplant-related toxicity. Indeed, in both programs, the treatment intensity was low and the *in vivo* T-cell depletion, either with alemtuzumab or anti-thymocyte globulin, remarkably high.¹⁹ Therefore, it is a distinct possibility that other more intensive conditioning regimens (i.e., those including busulfan or higher doses of melphalan) could have achieved a better impact on survival of patients with MMF,^{20,21} MDS,²² HD²³ and B-cell chronic lymphocytic leukemia.²⁴ However, when the two regimens were compared, the outcome of the transplant was not affected by the conditioning regimens and GVHD prophylaxis, although this result should be taken with caution, because of the differences in the two patients' cohorts and the retrospective nature of the study. On the other hand, this analysis does suggest that the success or failure of an UD transplant may be only marginally influenced by the different preparative regimens and controlled clinical trials are needed when new programs are proposed.

In conclusion, finding a donor and proceeding to an UD transplant, offers a survival advantage over not finding a donor,

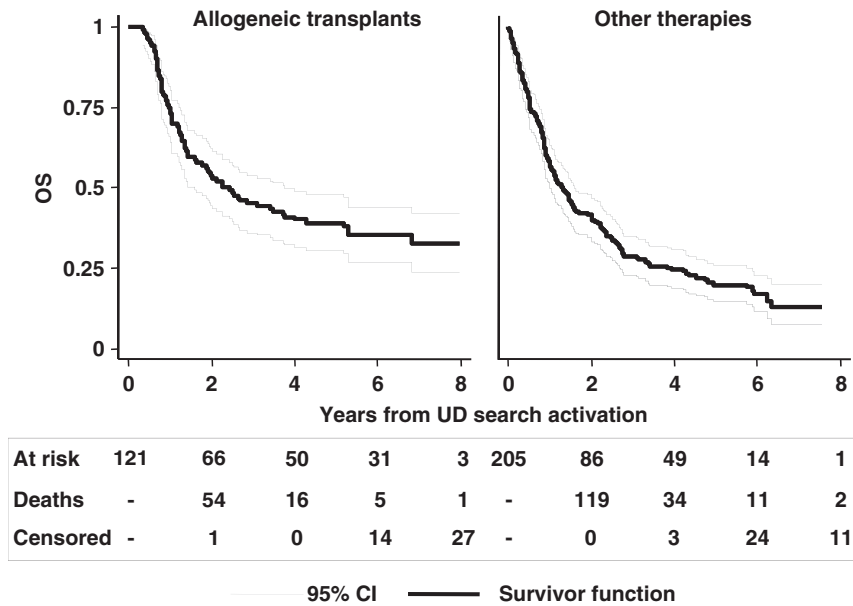


Figure 4. Kaplan–Meier curves of OS of patients undergoing unrelated transplant and patients allocated to any alternative treatment.

Table 3. Impact of allogeneic unrelated transplant on overall survival in the whole cohort of 326 patients and by diagnosis (multivariable Cox proportional hazard model)

Multivariable models	HR	CI (95%)	P-value
<i>Total (N = 326, deaths = 244)</i>			
Gender (F vs M)	0.85	(0.65–1.10)	0.209
Age at activation (≥ 50 vs < 50 years)	1.21	(0.92–1.58)	0.175
Disease risk status (high vs standard)	0.91	(0.69–1.21)	0.526
Unrelated transplant ^a	0.89	(0.67–1.20)	0.445
<i>AML/ALL (N = 67, deaths = 51)</i>			
Gender (F vs M)	0.79	(0.42–1.51)	0.478
Age at activation (60–65 vs 55–60 years)	1.57	(0.37–6.72)	0.540
Unrelated transplant ^a	<u>0.60</u>	<u>(0.34–0.99)</u>	<u>0.049</u>
<i>CML–MDS–MMF (N = 41, deaths = 30)</i>			
Gender (F vs M)	0.79	(0.36–1.77)	0.569
Age at activation (60–65 vs 55–60 years)	1.92	(0.42–8.74)	0.401
Unrelated transplant ^a	1.21	(0.49–3.00)	0.684
<i>HD (N = 104, deaths = 77)</i>			
Gender (F vs M)	0.99	(0.62–1.57)	0.958
Age at activation (≥ 50 vs < 50 years)	0.80	(0.29–2.24)	0.677
Previous autologous transplant (yes vs no)	0.92	(0.50–1.70)	0.789
Unrelated transplant ^a	0.67	(0.40–1.13)	0.136
<i>NHL–MF/SS (N = 80, deaths = 59)</i>			
Gender (F vs M)	0.93	(0.54–1.75)	0.926
Age at activation (≥ 50 vs < 50 years)	0.97	(0.57–1.67)	0.915
Previous autologous transplant (yes vs no)	1.07	(0.60–1.93)	0.813
Unrelated transplant ^a	<u>0.47</u>	<u>(0.27–0.82)</u>	<u>0.008</u>
<i>CLL (N = 34, deaths = 27)</i>			
Gender (F vs M)	0.75	(0.32–1.77)	0.510
Age at activation (≥ 50 vs < 50 years)	1.21	(0.53–2.77)	0.653
Previous autologous transplant (yes vs no)	1.41	(0.62–3.20)	0.412
Unrelated transplant ^a	1.58	(0.57–4.37)	0.382

Abbreviations: ALL, acute lymphoid leukemia; AML, acute myeloid leukemia; CI, confidence interval; CLL, chronic lymphoid leukemia; CML, chronic myeloid leukemia; F, female; HD, Hodgkin's disease; HR, hazard ratio; M, male; MDS, myelodysplastic Syndrome; MF, mycosis fungoides; MMF, myelofibrosis; NHL, non-Hodgkin's Lymphoma; SS, Sezary's syndrome. ^aTime-dependent covariate. The significant variables are underlined.

for patients with acute leukemia activating an UD search, and ineligible for a conventional regimen. A similar significant survival advantage was shown for patients with NHL. For chronic

leukemias and HD competing, non-transplant therapeutic strategies may possibly offer a similar survival outcome with comparable or even lower toxicity. The role of different conditioning

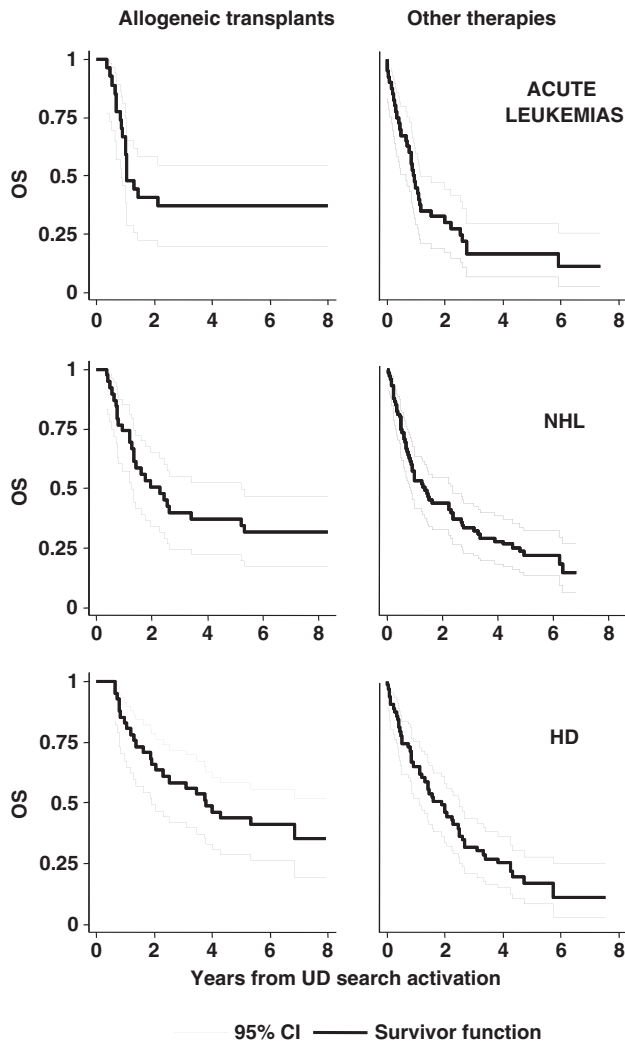


Figure 5. Kaplan–Meier curves of OS in patients undergoing unrelated transplant and patients allocated to any alternative treatment (acute leukemias, NHL and HD).

Table 4. Prognostic factors for the prediction of overall survival of the transplant patients (121 patients, 77 deaths) (multivariable Cox proportional hazard model)

Variables	HR (95% CI)	P-value
Conditioning regimen (A vs B)	0.95 (0.57–1.57)	0.833
Sex (F vs M)	0.87 (0.52–1.46)	0.604
Age (≥ 50 vs < 50 years)	1.46 (0.81–2.63)	0.211
Diagnosis (lymphoid vs myeloid malignancies)	0.88 (0.46–1.68)	0.689
Stem cell origin (BM vs PB)	1.14 (0.71–1.84)	0.583
Disease status (high-risk vs standard phase)	1.50 (0.86–2.62)	0.151
Time from donor search activation to transplant (≥ 5 vs < 5 months)	1.04 (0.64–1.69)	0.869
Engraftment (yes vs no) ^a	0.29 (0.13–0.64)	0.002
Acute GVHD (yes vs no) ^a	1.33 (0.81–2.20)	0.260
Chronic GVHD (yes vs no) ^a	0.47 (0.24–0.89)	0.020

Abbreviations: BM, bone marrow; CI, confidence interval; F, female; GVHD, graft versus host disease; HR, hazard ratio; M, male; PB, peripheral blood.
^aTime-dependent covariate.

regimens and GVHD prophylaxis with anti-thymocyte globulin or alemtuzumab remains to be elucidated. For this reason, GITMO has conducted and now completed a randomised trial between regimen A and regimen B to evaluate the overall antitumor activity and the safety profile of these two strategies.

CONFLICT OF INTEREST

AR, AB, FC and AB were advisors or paid consultants for Genzyme during study conduct. The remaining authors declare no conflict of interest.

ACKNOWLEDGEMENTS

This work was supported in part by grants from Associazione Italiana per la Ricerca contro il Cancro (AIRC) and Associazione Italiana Lotta alla Leucemia (AIL). In addition, we wish to thank the following colleagues and their institutions for contributing patients to this study: S Cortelazzo (Bolzano), P Leoni (Ancona), G Milone (Catania), G Marotta (Siena), S Capalbo (Foggia), P Marengo (Milano), F Narni (Modena), M Musso (Palermo), P di Bartolomeo (Pescara), M Petrini (Pisa), G Visani (Pesaro) and I Majolino (Roma). This work is dedicated to the memory of Professor Davide Soligo, who promoted this study and gave a crucial contribution to its study design.

REFERENCES

- Gooley TA, Chien JW, Pergam SA, Hingorani S, Sorror ML, Boeckh M *et al*. Reduced mortality after allogeneic hematopoietic-cell transplantation. *N Engl J Med* 2010; **363**: 2091–2101.
- Alyea EP, Kim HT, Ho V, Cutler C, Gribben J, DeAngelo DJ *et al*. Comparative outcome of nonmyeloablative and myeloablative allogeneic hematopoietic cell transplantation for patients older than 50 years of age. *Blood* 2005; **105**: 1810–1814.
- Ballen KK, Shrestha S, Sobocinski KA, Zhang MJ, Bashey A, Bolwell BJ *et al*. Outcome of transplantation for myelofibrosis. *Biol Blood Marrow Transplant* 2010; **16**: 358–367.
- Mohty M, Labopin M, Volin L, Gratwohl A, Socie G, Esteve J *et al*. Reduced-intensity versus conventional myeloablative conditioning allogeneic stem cell transplantation for patients with acute lymphoblastic leukemia: a retrospective study from the European Group for Blood and Marrow Transplantation. *Blood* 2010; **116**: 4439–4443.
- Devetten MP, Hari PN, Carreras J, Logan BR, van Besien K, Bredeson CN *et al*. Unrelated donor reduced-intensity allogeneic hematopoietic stem cell transplantation for relapsed and refractory Hodgkin lymphoma. *Biol Blood Marrow Transplant* 2009; **15**: 109–117.
- Karanes C, Nelson GO, Chitphakdithai P, Agura E, Ballen KK, Bolan CD *et al*. Twenty years of unrelated donor hematopoietic cell transplantation for adult recipients facilitated by the National Marrow Donor Program. *Biol Blood Marrow Transplant* 2008; **14**: 8–15.
- Gratwohl A, Stern M, Brand R, Apperley J, Baldomero H, de Witte T *et al*. Risk score for outcome after allogeneic hematopoietic stem cell transplantation: a retrospective analysis. *Cancer* 2009; **115**: 4715–4726.
- Todisco E, Castagna L, Sarina B, Mazza R, Anastasia A, Balzarotti M *et al*. Reduced-intensity allogeneic transplantation in patients with refractory or progressive Hodgkin's disease after high-dose chemotherapy and autologous stem cell infusion. *Eur J Haematol* 2007; **78**: 322–329.
- Raiola AM, Van Lint MT, Lamparelli T, Gualandi F, Mordini N, Berisso G *et al*. Reduced intensity thiotepa-cyclophosphamide conditioning for allogeneic haemopoietic stem cell transplants (HSCT) in patients up to 60 years of age. *Br J Haematol* 2000; **109**: 716–721.
- Baccarani M, Cortes J, Pane F, Niederwieser D, Saglio G, Apperley J *et al*. Chronic myeloid leukemia: an update of concepts and management recommendations of European LeukemiaNet. *J Clin Oncol* 2009; **27**: 6041–6051.
- Saglio G, Kim DW, Issaragrisil S, le Coutre P, Etienne G, Lobo C *et al*. Nilotinib versus imatinib for newly diagnosed chronic myeloid leukemia. *N Engl J Med* 2010; **362**: 2251–2259.
- Kantarjian H, Shah NP, Hochhaus A, Cortes J, Shah S, Ayala M *et al*. Dasatinib versus imatinib in newly diagnosed chronic-phase chronic myeloid leukemia. *N Engl J Med* 2010; **362**: 2260–2270.
- Robak T, Jamrozik K, Gora-Tybor J, Stella-Holowiecka B, Konopka L, Ceglarek B *et al*. Comparison of cladribine plus cyclophosphamide with fludarabine plus cyclophosphamide as first-line therapy for chronic lymphocytic leukemia: a phase III randomized study by the Polish Adult Leukemia Group (PALG-CLL3 Study). *J Clin Oncol* 2010; **28**: 1863–1869.
- Younes A, Bartlett NL, Leonard JP, Kennedy DA, Lynch CM, Sievers EL *et al*. Brentuximab vedotin (SGN-35) for relapsed CD30-positive lymphomas. *N Engl J Med* 2010; **363**: 1812–1821.

- 15 Kroger N, Holler E, Kobbe G, Bornhauser M, Schwerdtfeger R, Baurmann H *et al*. Allogeneic stem cell transplantation after reduced-intensity conditioning in patients with myelofibrosis: a prospective, multicenter study of the Chronic Leukemia Working Party of the European Group for Blood and Marrow Transplantation. *Blood* 2009; **114**: 5264–5270.
- 16 Alessandrino EP, Della Porta MG, Bacigalupo A, Van Lint MT, Falda M, Onida F *et al*. WHO classification and WPSS predict posttransplantation outcome in patients with myelodysplastic syndrome: a study from the Gruppo Italiano Trapianto di Midollo Osseo (GITMO). *Blood* 2008; **112**: 895–902.
- 17 Cutler C. Allogeneic hematopoietic stem-cell transplantation for myelodysplastic syndrome. *Hematol Am Soc Hematol Educ Program* 2010; **2010**: 325–329.
- 18 Corradini P, Sarina B, Farina L. Allogeneic transplantation for Hodgkin's lymphoma. *Br J Haematol* 2011; **152**: 261–272.
- 19 Juliusson G, Theorin N, Karlsson K, Frodin U, Malm C. Subcutaneous alemtuzumabvs ATG in adjusted conditioning for allogeneic transplantation: influence of Campath dose on lymphoid recovery, mixed chimerism and survival. *Bone Marrow Transplant* 2006; **37**: 503–510.
- 20 Samuelson S, Sandmaier BM, Heslop HE, Popat U, Carrum G, Champlin RE *et al*. Allogeneic haematopoietic cell transplantation for myelofibrosis in 30 patients 60–78 years of age. *Br J Haematol* 2010; **153**: 76–82.
- 21 Robin M, Tabrizi R, Mohty M, Furst S, Michallet M, Bay JO *et al*. Allogeneic haematopoietic stem cell transplantation for myelofibrosis: a report of the Societe Francaise de Greffe de Moelle et de Therapie Cellulaire (SFGM-TC). *Br J Haematol* 2010; **152**: 331–339.
- 22 Lim Z, Brand R, Martino R, van Biezen A, Finke J, Bacigalupo A *et al*. Allogeneic hematopoietic stem-cell transplantation for patients 50 years or older with myelodysplastic syndromes or secondary acute myeloid leukemia. *J Clin Oncol* 2010; **28**: 405–411.
- 23 Peggs KS, Hunter A, Chopra R, Parker A, Mahendra P, Milligan D *et al*. Clinical evidence of a graft-versus-Hodgkin's-lymphoma effect after reduced-intensity allogeneic transplantation. *Lancet* 2005; **365**: 1934–1941.
- 24 Dreger P, Dohner H, Ritgen M, Bottcher S, Busch R, Dietrich S *et al*. Allogeneic stem cell transplantation provides durable disease control in poor-risk chronic lymphocytic leukemia: long-term clinical and MRD results of the German CLL Study Group CLL3X trial. *Blood* 2010; **116**: 2438–2447.



This work is licensed under the Creative Commons Attribution-NonCommercial-No Derivative Works 3.0 Unported License. To view a copy of this license, visit <http://creativecommons.org/licenses/by-nc-nd/3.0/>