

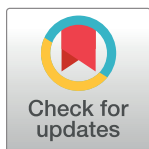
## RESEARCH ARTICLE

# Postoperative muscle mass restoration as a prognostic factor in patients with resected pancreatic cancer

Jongchan Lee<sup>1</sup>, Jong-chan Lee<sup>1</sup>, Hyoung Woo Kim<sup>2</sup>, Jaihan Kim<sup>1</sup>, Jin-Hyeok Hwang<sup>1\*</sup>

**1** Department of Internal Medicine, College of Medicine, Seoul National University Bundang Hospital, Seongnam, Korea, **2** Department of Internal Medicine, College of Medicine, Chungbuk National University Hospital, Cheongju, Korea

\* [woltoong@snu.ac.kr](mailto:woltoong@snu.ac.kr)



## Abstract

### Background

Recent studies have found that muscle depletion may be a prognostic predictor in patients with pancreatic cancer (PC). However, in these studies, limited data were used to assess the relationship between the serial change in body composition and outcomes after PC resection. Hence, we evaluated the changes in body composition during the perioperative period in patients with PC and their association with the overall survival (OS).

### Methods

A total of 89 patients with PC who received surgery with curative intent between 2006 and 2015 were included in this study retrospectively. These patients underwent serial computed tomography (CT) scans: preoperatively, immediately after surgery (4 weeks), and 12 and 24 weeks after resection. The muscle and visceral fat areas were measured at the third lumbar vertebra level on cross-sectional CT images using sliceOmatic V5.0 program (TomoVision, Canada). The body composition ratio was determined by dividing the post-resection body composition at each point (4, 12, and 24 weeks) by the pre-resection body composition. Patients were divided into two groups—higher and lower groups—based on this body composition ratio (skeletal muscle mass ratio [SMR], visceral fat mass ratio [VFR]). The OS was compared between the two groups using the log-rank test.

### Results

The median age of patients was 63 (27–84) years, and the baseline body mass index was 23.0 (17.0–35.8) kg/m<sup>2</sup>. In the comparison of the SMR, there was no significant difference in the OS between the two groups at 4 and 12 weeks (4 weeks,  $P = 0.488$ ; 12 weeks,  $P = 0.397$ ). However, the higher group showed a longer OS than the lower group at 24 weeks (39 vs. 20 months,  $P = 0.008$ ). Similarly, in the VFR, there was no significant difference in the OS between the two groups at 4 and 12 weeks (4 weeks,  $P = 0.732$ ; 12 weeks,  $P = 0.060$ ). However, the OS was longer in the higher group at 24 weeks (35 vs. 22 months,

## OPEN ACCESS

**Citation:** Lee J, Lee J-c, Kim HW, Kim J, Hwang J-H (2020) Postoperative muscle mass restoration as a prognostic factor in patients with resected pancreatic cancer. PLoS ONE 15(9): e0238649. <https://doi.org/10.1371/journal.pone.0238649>

**Editor:** Pankaj K Singh, University of Nebraska Medical Center, UNITED STATES

**Received:** March 24, 2020

**Accepted:** August 20, 2020

**Published:** September 16, 2020

**Copyright:** © 2020 Lee et al. This is an open access article distributed under the terms of the [Creative Commons Attribution License](https://creativecommons.org/licenses/by/4.0/), which permits unrestricted use, distribution, and reproduction in any medium, provided the original author and source are credited.

**Data Availability Statement:** All relevant data are within the manuscript and its Supporting Information files.

**Funding:** The authors received no specific funding for this work.

**Competing interests:** The authors have declared that no competing interests exist.

$P = 0.023$ ). When we analyzed the effect of muscle restoration at 24 weeks after resection on the OS by gender, there was no significant difference between the OS and SMR in the male group ( $P = 0.213$ ), but a significant difference was noted in the female group ( $P = 0.002$ ). In the multivariate Cox regression analysis, the SMR at 24 weeks after resection was significantly associated with the OS ( $P = 0.023$ ) but not VFR at 24 weeks. In 69 patients without recurrence at 6 months, the SMR at 24 weeks was related to longer OS but without statistical significance ( $P = 0.07$ ).

## Conclusions

This study suggests that the restoration of muscle mass at 24 weeks after resection may be an independent prognostic factor for survival in patients with resected PC.

## Introduction

Despite much advancement in the treatment of pancreatic cancer (PC), the prognosis remains poor. Adjuvant chemotherapy after surgical resection has been reported to improve the post-operative prognosis in patients with PC [1, 2]. Nonetheless, several patients still develop recurrence after curative resection [3, 4]. PC is one of the leading causes of cancer-related mortality worldwide [5]. Therefore, several studies are underway to investigate the potential factors influencing the prognosis of PC after resection [6, 7].

Sarcopenia is a condition that is characterized by the loss of muscle mass, strength, and function [8, 9]. Decreased muscle mass results in functional impairment, such as falls and loss of autonomy [10]. Several mechanisms are involved in the development of sarcopenia: age, endocrine, muscle disuse, inadequate nutrition, neurodegenerative disease, and cachexia [11]. Sarcopenia is increasingly recognized as an important issue even in cancer management. Most patients with cancer are exposed to several factors that cause muscle mass to decrease and muscle dysfunction, including malnutrition, physical inactivity, tumor-derived factors, and cancer therapy [12].

Several studies have been conducted to evaluate how the change in body composition influences the prognosis of patients with lung, esophageal, and colorectal cancers [13–15]; to our knowledge, such studies are currently underway for patients with PC [16–18]. PC is associated more with weight loss than other cancers because it can cause diabetes mellitus, gastrointestinal obstruction, and secretory disorders of digestive enzymes. Sarcopenia, sarcopenic obesity, and a decrease in muscle density on computed tomography (CT) at the time of diagnosis have been found to be associated with poor prognosis [6, 16, 19]. Moreover, a recent study has shown that a decrease in the skeletal muscle in patients with inoperable locally advanced PC is associated with poorer prognosis [20].

However, to date, there are only a few studies investigating the association between serial body composition change and prognosis over time in patients with resected PC. Hence, the purpose of this study was to investigate the trajectory of body composition after PC resection and the relationship between body composition change and overall survival (OS).

## Materials and methods

### Study patients

A total of 326 patients with PC who received resection at Seoul National University Bundang Hospital between January 2006 and December 2015 were reviewed. Among these, those who

underwent surgery for palliation or received neoadjuvant treatment were excluded. Patients without follow-up CT scans available on a regular basis for up to 6 months after surgery were also excluded. Finally, 89 patients with PC were enrolled.

CT was performed at the time of diagnosis, immediately after resection (4 weeks), and at approximately 12 and 24 weeks after resection. CT scans using a pancreatic protocol were obtained to investigate any complications immediately after resection and again at 12 and 24 weeks after resection to assess possible recurrence or progression of the disease.

The medical records of all participants were collected and anonymized, and this study was approved by the institutional review board (IRB) of Seoul National University Bundang Hospital (Seongnam, Republic of Korea) (B-1912-585-104). Since this study was a retrospective analysis of clinical data, consent requirement was waived by the local IRB.

### **Body composition measurements and definition of the changes in body composition**

Images of the cross-sectional areas of the skeletal muscle mass (SMM) and visceral fat mass (VFM) at the midpoint of the third lumbar vertebral body (L3) were obtained via a CT scan. The cross-sectional image of the L3 level contained the psoas, erector spinae, quadratus lumborum, transversus abdominis, external and internal oblique muscles, and rectus abdominis. We analyzed these body compositions using the sliceOmatic V5.0 software (TomoVision, Magog, Canada). In brief, sliceOmatic is a program that makes it possible to distinguish specific tissues using the Hounsfield unit (HU) thresholds. The skeletal muscles were quantified between the HU range of -29 to 150 HU and the visceral adipose tissue using the range of -150 to -50 HU. This program summed the pixels of the area of each tissue and expressed it as a number. The boundary of the tissue was calibrated manually as needed. To prevent disagreement between the observers, one well-trained observer analyzed all 356 CT images using this program.

To determine the changes in the body composition during the follow-up period, we calculated the body composition ratio at each time point (4, 12 and 24 weeks after resection) to the body composition at the time of diagnosis: the skeletal muscle mass ratio (SMR) and visceral fat mass ratio (VFR). Then, we obtained the median values of SMR and VFR at each time point. Based on this, patients were divided into one of two groups at each time point: lower and higher group. We then compared the OS of two groups according to the body composition ratio.

### **Statistical analysis**

The patients' baseline characteristics and body composition were presented as the mean and standard deviation for continuous variables and proportions and percentages for categorical variables. The survival time was defined as the time from diagnosis to death, and the median OS was determined by the Kaplan–Meier method. A comparison of survival of subgroups was performed using the log-rank test. The Cox proportional hazards regression model was used to determine the relationship between the variables and survival as hazard ratios (HR) and 95% confidence intervals (CI). The results with two-sided t-test and a value of  $P < 0.05$  were considered to indicate statistical significance. Statistical analyses were performed using the STATA version 14.0 (StataCorp, College Station, TX, USA).

## **Results**

### **Patient characteristics**

This study included 89 patients with resected PC with four serial CTs before resection and 4, 12, and 24 weeks after resection. Their demographics and clinical characteristics are shown in

**Table 1. Patient demographics and clinical characteristics.**

Variables	<i>n</i> = 89
Age (range), years	63 (27–84)
Sex	
Male (%)	55 (61.8%)
Female (%)	34 (38.2%)
BMI* (range) (kg/m <sup>2</sup> )	23.0 (17.0–35.8)
Diabetes mellitus ASA grade†	38 (42.7%)
I	25 (28.1%)
II	54 (60.7%)
III	10 (11.2%)
Tumor location	
Head	57 (64.0%)
Body	15 (16.9%)
Tail	17 (19.1%)
Differentiation of tumor	
Well differentiated	7 (7.4%)
Moderately differentiated	71 (77.7%)
Poorly differentiated	6 (7.4%)
Undifferentiated	5 (7.4%)
Postoperative TNM stage	
IA	10 (11.2%)
IB	29 (32.6%)
IIA	9 (10.1%)
IIB	34 (38.2%)
III	7 (7.9%)
Type of resection	
Standard pancreaticoduodenectomy	16 (18.0%)
Pylorus-preserved pancreaticoduodenectomy	46 (51.7%)
Distal pancreatectomy	27 (30.3%)
Surgical margin state	
R0	67 (75.3%)
R1	22 (24.7%)
Adjuvant chemotherapy (≥4 cycles)	57 (64.0%)

\* BMI, body mass index;

† ASA grade, American Society of Anesthesiologists grade.

<https://doi.org/10.1371/journal.pone.0238649.t001>

**Table 1.** The median age was 63 years (range, 27–84 years), and 55 of 89 patients (61.8%) were men. The median body mass index (BMI) was 23.0 kg/m<sup>2</sup> (range, 17.0–35.8 kg/m<sup>2</sup>). Thirty-eight patients (42.7%) had a history of preoperative diabetes mellitus. Approximately two-thirds of patients (69.7%) underwent pylorus-preserving pancreaticoduodenectomy (PPPD) or standard pancreaticoduodenectomy (PD), and the remainder underwent distal pancreatectomy (DP). R0 resection was achieved in 67 (75.3%) patients, and 57 (64.0%) patients received more than four cycles of effective adjuvant chemotherapy.

### Changes in body composition parameters

We investigated the change of trajectory of body compositions, such as BMI, SMM, and VFM (Table 2). The overall observation showed that the BMI, SMM, and VFM decreased after PC

**Table 2. Change in body composition parameters after resection of pancreatic cancer (mean, standard deviation).**

Variables	Before resection	<4 weeks after resection	12 weeks after resection	24 weeks after resection
<b>Total</b>				
BMI	23.0 (19.0–26.0)	22.6 (18.1–27.1)	21.2 (17.0–25.4)	20.6 (15.8–25.4)
Skeletal muscle*, cm <sup>2</sup>	118.7 (93.4–144.1)	121.5 (98.7–144.2)	110.2 (85.5–135.0)	109.9 (86.5–133.3)
Skeletal muscle index†	44.7 (37.7–51.7)	45.9 (39.5–52.2)	41.5 (34.3–48.6)	41.5 (34.3–48.6)
Visceral fat‡, cm <sup>2</sup>	94.6 (46.8–142.4)	86.6 (41.4–131.8)	64.9 (30.4–99.4)	62.3 (27.5–97.1)
Skeletal muscle ratio	1.000	1.031 (0.959–1.104)	0.931 (0.858–1.004)	0.931 (0.838–1.023)
Visceral fat ratio	1.000	0.943 (0.721–1.165)	0.767 (0.331–1.203)	0.758 (0.288–1.228)
<b>Males</b>				
BMI	22.5 (19.7–25.3)	21.8 (16.7–26.9)	21.1 (17.3–24.9)	20.8 (17.0–24.6)
Skeletal muscle, cm <sup>2</sup>	132.2 (111.3–153.2)	132.2 (111.9–152.5)	123.0 (101.9–144.1)	120.9 (99.7–142.0)
Skeletal muscle index	47.2 (40.5–53.9)	47.2 (40.8–53.7)	43.9 (37.2–50.6)	43.2 (35.8–50.6)
Visceral fat, cm <sup>2</sup>	100.5 (49.3–151.6)	90.6 (43.7–137.5)	68.6 (31.0–106.3)	65.9 (28.3–103.6)
Skeletal muscle ratio	1.000	1.002 (0.949–1.055)	0.934 (0.866–1.002)	0.916 (0.825–1.007)
Visceral fat ratio	1.000	0.925 (0.722–1.128)	0.749 (0.309–1.190)	0.735 (0.276–1.194)
<b>Females</b>				
BMI	23.7 (20.5–26.9)	23.7 (20.6–26.8)	21.4 (16.6–26.2)	20.4 (14.2–26.6)
Skeletal muscle, cm <sup>2</sup>	96.9 (82.8–111.0)	104.1 (89.9–118.3)	89.6 (75.7–103.4)	92.2 (77.8–106.6)
Skeletal muscle index	40.6 (35.1–46.1)	43.6 (38.1–49.2)	37.5 (32.0–43.1)	38.7 (32.9–44.4)
Visceral fat, cm <sup>2</sup>	85.1 (44.3–125.9)	80.1 (37.9–122.4)	58.9 (30.9–86.9)	56.5 (27.3–85.8)
Skeletal muscle ratio	1.000	1.078 (1.002–1.154)	0.926 (0.845–1.008)	0.954 (0.862–1.046)
Visceral fat ratio	1.000	0.971 (0.721–1.222)	0.795 (0.361–1.228)	0.795 (0.304–1.286)

\* Skeletal muscle area at the third lumbar level;

† Skeletal muscle index: skeletal muscle area/the square of the height, cm<sup>2</sup>/m<sup>2</sup>;

‡ Visceral fat area at the third lumbar level.

<https://doi.org/10.1371/journal.pone.0238649.t002>

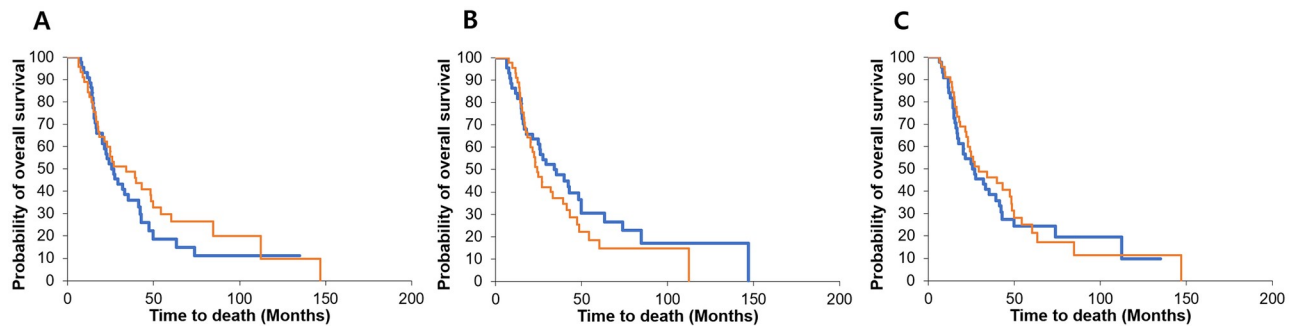
resection throughout the 12-week period after resection, regardless of gender. In men, the SMR and VFR decreased throughout the 24-week period after resection although the degree of reduction was lower. In women, however, the skeletal muscle and visceral fat reached nadir at 12 weeks, which then slightly recovered at 24 weeks (Table 2).

### Survival according to the body composition ratio

The median follow-up was 26.9 months after resection. We examined the relationship between the OS and BMI as well as between the SMM and VFM before resection. The Kaplan–Meier analysis found no significant difference in the OS according to the BMI ( $P = 0.311$ ), SMM ( $P = 0.234$ ), and VFM ( $P = 0.667$ ) before resection (Fig 1).

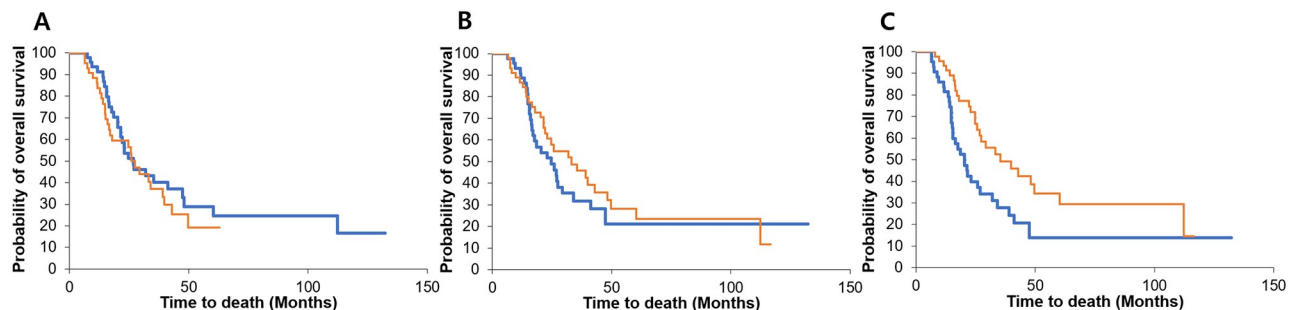
When we analyzed the SMR at each time point, there was no significant difference in the median OS between the higher and lower groups at 4 ( $P = 0.488$ ) and 12 ( $P = 0.397$ ) weeks after resection. However, the higher group showed a longer median OS than the lower group at 24 weeks (39 vs. 20 months,  $P = 0.008$ ) (Fig 2). Similarly, when we analyzed the VFR, the OS did not differ significantly between the higher and lower groups at 4 ( $P = 0.732$ ) and 12 ( $P = 0.060$ ) weeks after resection. However, the OS was longer in the higher visceral fat group at 24 weeks (35 vs. 22 months,  $P = 0.023$ ) (Fig 3). We analyzed the baseline characteristics of the higher and lower groups at 24 weeks and these are presented in S1 Table.

Patients were divided based on gender, and the effect of the restoration of SMM at 24 weeks after resection on the OS was analyzed using the Kaplan–Meier method. According to this



**Fig 1. Survival according to the body mass index (BMI), skeletal muscle mass (SMM), and visceral fat mass (VFM) before resection.** The Kaplan-Meier analysis found no significant difference in the overall survival (OS) according to the BMI, SMM, and VFM before resection. The orange and blue lines indicate the higher and lower groups, respectively. (A) BMI before resection ( $P = 0.311$ ), (B) SMM before resection ( $P = 0.234$ ), and (C) VFM before resection ( $P = 0.667$ ).

<https://doi.org/10.1371/journal.pone.0238649.g001>

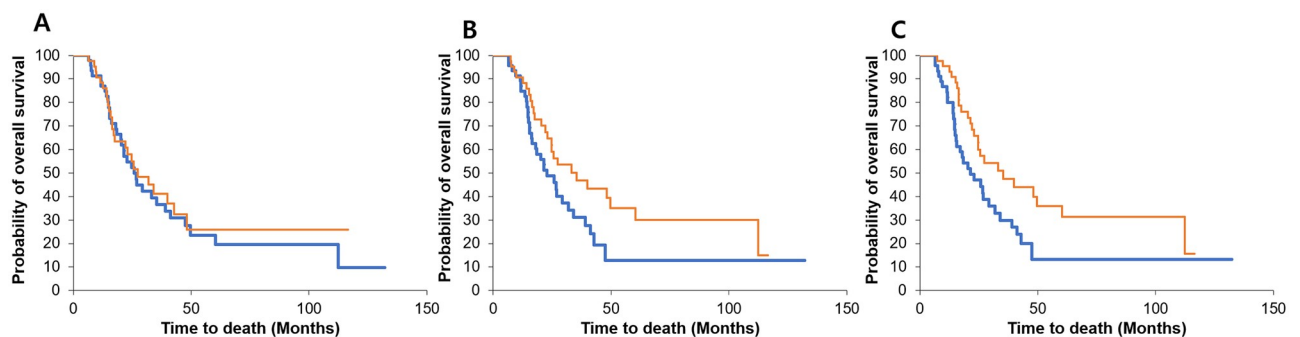


**Fig 2. Survival according to the change in the skeletal muscle mass ratio (SMR).** When we analyzed the SMR at each time point, there was no significant difference in the median overall survival (OS) between the higher and lower groups at 4 ( $P = 0.488$ ) and 12 ( $P = 0.397$ ) weeks after resection (A, B). However, the higher group showed a longer median OS than the lower group at 24 weeks (39 vs. 20 months,  $P = 0.008$ ) (C).

<https://doi.org/10.1371/journal.pone.0238649.g002>

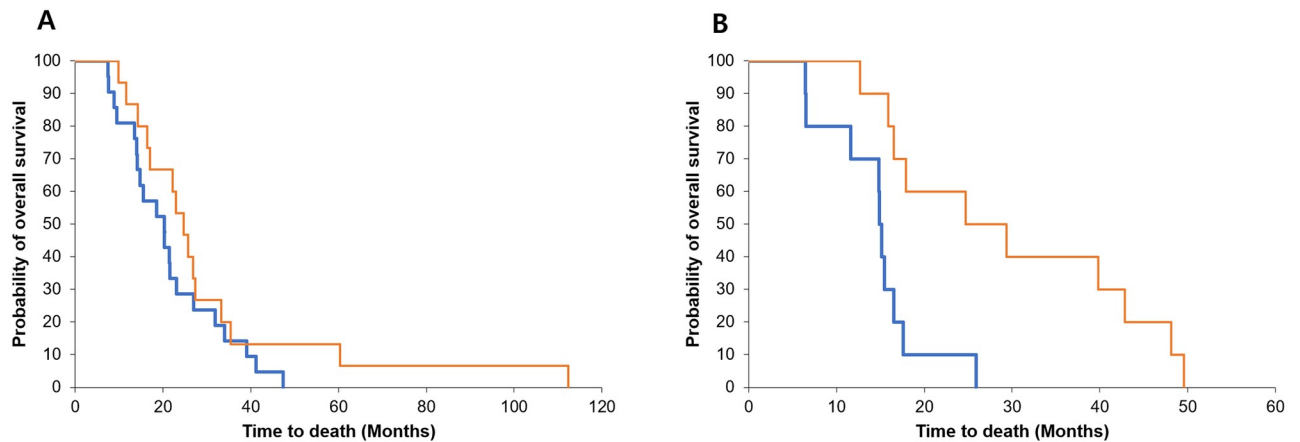
analysis, the difference between SMR and OS was not significant in the male group ( $P = 0.213$ ) but was significant in the female group ( $P = 0.002$ ) (Fig 4).

A univariate analysis of prognostic factors for the OS was performed on several variables, including gender, age, adjuvant chemotherapy, adipopenia, and sarcopenia. As a result, sarcopenia and adipopenia were found to be significant prognostic factors. However, in the



**Fig 3. Survival according to the change in the visceral fat mass ratio (VFR).** When we analyzed the VFR, the overall survival (OS) did not differ significantly between the higher and lower groups at 4 ( $P = 0.732$ ) and 12 ( $P = 0.060$ ) weeks after resection (A, B). However, the OS was longer in the higher visceral fat group at 24 weeks (35 vs. 22 months,  $P = 0.023$ ) (C).

<https://doi.org/10.1371/journal.pone.0238649.g003>



**Fig 4. Survival according to the change in the body composition ratio in both gender groups at 24 weeks after resection.** The patients were divided into the male group (A) and female group (B), and the effect of the restoration of skeletal muscle mass (SMM) at 24 weeks after surgery on the overall survival (OS) was analyzed using the Kaplan–Meier method. In this Kaplan–Meier analysis, the SMM and OS were not statistically significant in the male group ( $P = 0.213$ ) but were significant in the female group ( $P = 0.002$ ).

<https://doi.org/10.1371/journal.pone.0238649.g004>

multivariate Cox regression analysis, only the SMR at 24 weeks ( $P = 0.023$ ) was significantly associated with the OS, and the VFR at 24 weeks ( $P = 0.073$ ) was not (Table 3).

### Survival in patients without early recurrence

We performed a subgroup analysis of 69 patients without recurrence at 6 months after resection (Fig 5). The higher group at the SMR at 24 weeks after resection was related to longer OS than the lower group (61.9 vs. 48.0 months) although this was not statistically significant ( $P = 0.07$ ).

## Discussion

Several studies have suggested that sarcopenia at the time of diagnosis or preoperative weight loss may be associated with reduced overall survival in all stages of PC [8, 17, 21]. It may be natural for sarcopenia to reflect the nutritional status at the time of diagnosis [22], which can influence survival. At the time of diagnosis, sarcopenia cannot be manipulated; however, after resection, it can be controlled by cancer rehabilitation therapies, including nutritional support

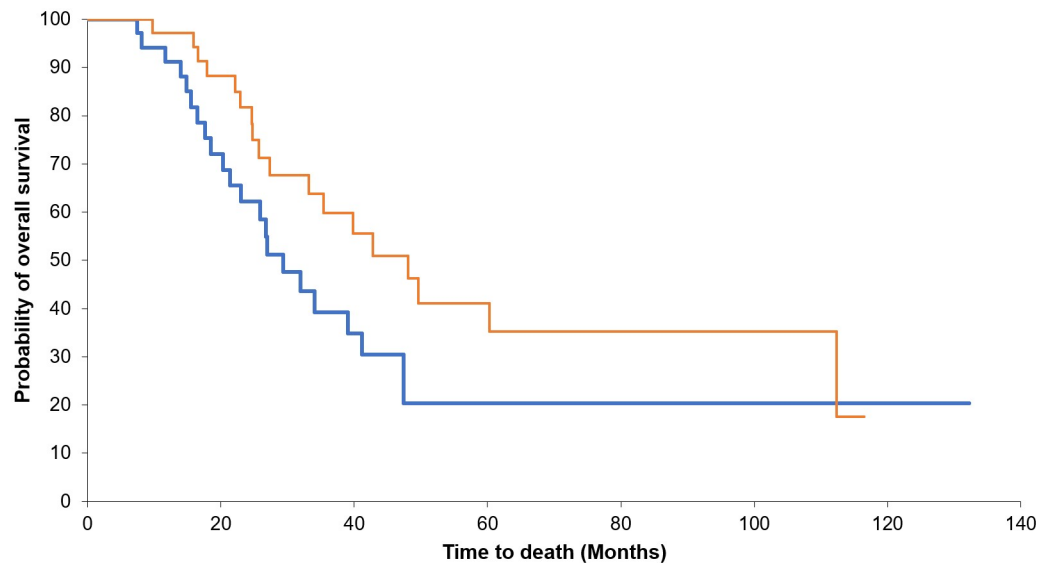
**Table 3. Prognostic factors for overall survival in the univariate and multivariate analyses at 6 months after resection of pancreatic cancer.**

Factors	OS	Univariate analysis		Multivariate analysis	
	(month)	HR (95% CI)	P value	HR (95% CI)	P value
Sex (male)	26.5	1.35 (0.78–2.33)	0.289	1.13 (0.62–2.08)	0.683
Age ( $\geq 65$ )	27.6	1.16 (0.69–1.96)	0.585	1.04 (0.30–3.60)	0.947
Adjuvant chemotherapy	29.5	0.54 (0.28–1.00)	0.050	0.58 (0.29–1.12)	0.105
Adipopenia*	35.8	0.54 (0.32–0.92)	0.023	0.59 (0.33–1.05)	0.073
Sarcopenia†	35.8	0.49 (0.29–0.83)	0.008	0.52 (0.30–0.92)	0.023

\* Adipopenia, patients whose ratio of visceral fat of the third lumbar area at 24 weeks point after resection to the visceral fat at the third lumbar area on pre-resection point is lower than the median value.

† Sarcopenia, patients whose ratio of skeletal muscle of the third lumbar area at 24 weeks point after resection to skeletal muscle of the third lumbar area on pre-resection point is lower than the median value

<https://doi.org/10.1371/journal.pone.0238649.t003>



**Fig 5. Subgroup analysis: Except for the early recurrence group.** Overall survival (OS) according to the change in the skeletal muscle mass ratio (SMR) at 24 weeks after surgery. In the lower group (blue line), the SMR at 24 weeks after resection was related to shorter overall survival than that in the higher group (red line), but this was not statistically significant ( $P = 0.07$ ).

<https://doi.org/10.1371/journal.pone.0238649.g005>

or medication [23]. Moreover, according to recent experimental models, an inhibition of the cachexia-related cytokine pathway may dramatically increase the lifespan by inhibiting cancer-induced weight loss although indicating minimal antitumor effects [24]. Therefore, it is worth investigating the serial changes in body composition that may influence survival in patients with resected PC.

In our research, there was no difference in the OS with respect to the SMM before resection. However, we found that a restoration of SMM at 24 weeks after resection is associated with favorable outcomes in patients with resected PC (39 vs. 20 months,  $P = 0.008$ ). This may be because patients with depletion of SMM present higher chemotherapy-related toxicity and poor prognosis, whereas those with larger amounts of SMM may show fewer toxicities and better outcomes [25]. To the best of our knowledge, this is the first study analyzing the relationship between body composition trajectory and survival in patients with PC after resection. The data presented in this study could suggest that the preservation of muscle mass impacts survival and postoperative rehabilitation improves survival in patients with resected PC.

Patients with PC frequently experience recurrence even after complete resection followed by adjuvant treatment. To minimize the impact on sarcopenia by early recurrence, we performed a subgroup analysis, with the exception of early recurrence. The OS of patients with preserved SMM tended to be better. Currently, we are unable to provide an exact as to why the restoration of muscle mass was a more important factor with respect to survival than preoperative SMM in patients with resected PC, which is similar to the findings of a previous study that included patients with unresectable colorectal cancer [26].

A recent study reported that accelerated SMM and VFM losses were associated with reduced survival in patients with advanced PC [27]. In our study, the univariate analysis showed that the VFR and OS were related ( $P = 0.023$ ). However, this was not significant in the multivariate Cox regression analysis ( $P = 0.073$ ). Therefore, this result suggests that the changes in the SMM over time have a greater impact on survival than the VFR.



Recently, there have been some studies asserting that physical activity and exercise may have a positive effect on the management of cancer cachexia by improving health-related quality of life, physical performance [28, 29]. In a randomized, controlled trial of 231 patients with cancer, an 8-week physical exercise program showed significant improvement in patients' physical performance [29]. Although there is insufficient evidence of its effectiveness and practicality to date, exercise appears to be beneficial to patients with or at risk of cancer cachexia [30, 31]. Accordingly, an exercise program for patients with cancer should be developed. Based on the result of our study, we believe that exercise from 12 to 24 weeks after PC resection is important for production of SMM; hence, it may be necessary to develop an exercise program during this post-resection period.

This study has some limitations. It was conducted at a single-institution, retrospective design with a small sample size. However, the strength of this study may be that we used an objective index of CT to measure the serial body composition changes with a duration of up to 6 months after resection. Although there is no consensus for defining sarcopenia in the Asian population, unlike the European population [11], our results may be applicable because the longitudinal body composition change can serve as a prognostic factor instead of the cross-sectional body composition.

In conclusion, this study suggests that the restoration of SMM at 24 weeks after surgery is an independent prognostic factor for survival in patients with resected PC. We propose that a development of therapeutic strategies focused on improving the OS is important for the rehabilitation and restoration of muscle mass in patients with resected PC.

## Summary

We found that the restoration of muscle mass at 24 weeks after resection is an independent prognostic factor for survival in patients with resected PC. The importance of this finding is that it can be helpful in the development of a therapeutic strategy for the rehabilitation of patients with PC after resection.

## Supporting information

**S1 Table. Characteristics of the higher and lower groups (at 24 weeks after resection).** (DOCX)

## Author Contributions

**Conceptualization:** Jongchan Lee, Jong-chan Lee, Jaihwon Kim, Jin-Hyeok Hwang.

**Data curation:** Jongchan Lee, Jong-chan Lee.

**Formal analysis:** Jongchan Lee, Jong-chan Lee.

**Investigation:** Jongchan Lee, Jin-Hyeok Hwang.

**Methodology:** Jongchan Lee, Jong-chan Lee, Hyoung Woo Kim, Jin-Hyeok Hwang.

**Project administration:** Jin-Hyeok Hwang.

**Resources:** Hyoung Woo Kim, Jin-Hyeok Hwang.

**Software:** Jongchan Lee.

**Supervision:** Jaihwon Kim, Jin-Hyeok Hwang.

**Validation:** Jin-Hyeok Hwang.

**Visualization:** Jin-Hyeok Hwang.

**Writing – original draft:** Jongchan Lee, Jin-Hyeok Hwang.

**Writing – review & editing:** Jongchan Lee, Jin-Hyeok Hwang.

## References

1. Oettle H, Post S, Neuhaus P, Gellert K, Langrehr J, Ridwelski K, et al. Adjuvant chemotherapy with gemcitabine vs observation in patients undergoing curative-intent resection of pancreatic cancer: a randomized controlled trial. *JAMA* 2007; 297: 267–77 <https://doi.org/10.1001/jama.297.3.267> PMID: 17227978
2. Ueno H, Kosuge T, Matsuyama Y, Yamamoto J, Nakao A, Egawa S, et al. A randomized phase III trial comparing gemcitabine with surgery-only in patients with resected pancreatic cancer: Japanese Study Group of Adjuvant Therapy for Pancreatic Cancer. *Br J Cancer* 2009; 101: 908–15 <https://doi.org/10.1038/sj.bjc.6605256> PMID: 19690548
3. Schnelldorfer T, Ware AL, Sarr MG, Smyrk TC, Zhang L, Qin R, et al. Long-term survival after pancreatoduodenectomy for pancreatic adenocarcinoma: is cure possible? *Ann Surg* 2018; 247: 456–62
4. Ferrone CR, Brennan MF, Gonen M, Coit DG, Fong Y, Chung S, et al. Pancreatic adenocarcinoma: the actual 5-year survivors. *J Gastrointest Surg* 2018; 12: 701–6
5. Siegel R, Naishadham D, Jemal A. Cancer statistics, 2012. *CA Cancer Clin* 2012; 62: 10–29
6. Tan BH, Birdsell LA, Martin L, Baracos VE, Fearon KC. Sarcopenia in an overweight or obese patient is an adverse prognostic factor in pancreatic cancer. *Clin Cancer Res* 2009; 15(22): 6973–9 <https://doi.org/10.1158/1078-0432.CCR-09-1525> PMID: 19887488
7. Lim JE, Chien MW, Earle CC. Prognostic factors following curative resection for pancreatic adenocarcinoma: a population-based, linked database analysis of 396 patients. *Ann Surg*. 2003; 237(1): 74–85 <https://doi.org/10.1097/00000658-200301000-00011> PMID: 12496533
8. Rosenberg I. Summary comments; epidemiological and methodological problems in determining nutritional status of older persons. *Am J Clin Nutr*. 1989; 50: 1231–3
9. Roubenoff R. Origins and clinical relevance of sarcopenia. *Can J Appl Physiol* 2001; 26(1):78–89 <https://doi.org/10.1139/h01-006> PMID: 11291626
10. Evans WJ. What is sarcopenia? *J Gerontol A Biol Sci Med Sci* 1995; 50. Spec:5–8
11. Cruz-Jentoft AJ, Baeyens JP, Bauer JM, Boirie Y, Cederholm T, Landi F, et al. European Working Group on Sarcopenia in Older People. Sarcopenia: European consensus on definition and diagnosis: Report of the European working group on sarcopenia in older people. *Age Ageing* 2010; 39: 412–23 <https://doi.org/10.1093/ageing/afq034> PMID: 20392703
12. Christensen JF, Jones LW, Andersen JL, Dugaard G, Rorth M, Hojman P. Muscle dysfunction in cancer patients. *Ann Oncol* 2014; 25: 947–58 <https://doi.org/10.1093/annonc/mdt551> PMID: 24401927
13. Santilli Valter, Bernetti Andrea, Mangone Massimiliano, Paoloni Marco. Clinical definition of sarcopenia. *Clin Cases Miner Bone Metab* 2014; 11(3):177–180 PMID: 25568649
14. Stene GB, Helbostad JL, Amundsen T, Sørhaug S, Hjelde H, Kaasa S, et al. Changes in skeletal muscle mass during palliative chemotherapy in patients with advanced lung cancer. *Acta Oncol* 2015; 54: 340–8 <https://doi.org/10.3109/0284186X.2014.953259> PMID: 25225010
15. Elliott JA, Doyle SL, Murphy CF, King S, Guinan EM, Beddy P, et al. Sarcopenia: prevalence, and impact on operative and oncologic outcomes in the multimodal management of locally advanced esophageal cancer. *Ann Surg* 2017; 266: 822–30 <https://doi.org/10.1097/SLA.0000000000002398> PMID: 28796017
16. Malietzis G, Currie AC, Johns N, Fearon KC, Darzi A, Kennedy RH, et al. Skeletal muscle changes after elective colorectal cancer resection: a longitudinal study. *Ann Surg Oncol* 2016; 23: 2539–47 <https://doi.org/10.1245/s10434-016-5188-1> PMID: 27006127
17. Akahori T, Sho M, Kinoshita S, Nagai M, Nishiwada S, Tanaka T, et al. Prognostic significance of muscle attenuation in pancreatic cancer patients treated with neoadjuvant chemoradiotherapy. *World J Surg* 2015; 39: 2975–82 <https://doi.org/10.1007/s00268-015-3205-3> PMID: 26296840
18. Cooper AB, Slack R, Fogelman D, Holmes HM, Petzel M, Parker N, et al. Characterization of anthropometric changes that occur during neoadjuvant therapy for potentially resectable pancreatic cancer. *Ann Surg Oncol* 2015; 22: 2416–23 <https://doi.org/10.1245/s10434-014-4285-2> PMID: 25519927
19. Choi Y, Oh DY, Kim TY, Lee KH, Han SW, Im SA, et al. Skeletal muscle depletion predicts the prognosis of patients with advanced pancreatic cancer undergoing palliative chemotherapy, independent of body mass index. *PLoS ONE* 2015; 10(10): e0139749. <https://doi.org/10.1371/journal.pone.0139749> PMID: 26437072

20. Mintziras I, Miligkos M, Wächter S, Manoharan J, Maurer E, Bartsch DK. Sarcopenia and sarcopenic obesity are significantly associated with poorer overall survival in patients with pancreatic cancer: Systematic review and meta-analysis. *International Journal of Surgery* 2018; 59: 19–26 <https://doi.org/10.1016/j.ijso.2018.09.014> PMID: 30266663
21. Dalal S, Hui D, Bidaut L, Lem K, Del Fabbro E, Crane C, et al. Relationships among body mass index, longitudinal body composition alterations, and survival in patients with locally advanced pancreatic cancer receiving chemoradiation: a pilot study. *J Pain Symptom Manage* 2012; 44: 181–91 <https://doi.org/10.1016/j.jpainsymman.2011.09.010> PMID: 22695045
22. Delitto D, Judge SM, George TJ Jr, Sarosi GA, Thomas RM, Behrns KE, et al. A clinically applicable muscular index predicts long-term survival in resectable pancreatic cancer. *Surgery* 2017; 161: 930–8 <https://doi.org/10.1016/j.surg.2016.09.038> PMID: 27932030
23. Meza-Junco J, Montano-Loza AJ, Baracos VE, Prado CM, Bain VG, Beaumont C, et al. Sarcopenia as a prognostic index of nutritional status in concurrent cirrhosis and hepatocellular carcinoma. *J Clin Gastroenterol* 2013; 47: 861–70 <https://doi.org/10.1097/MCG.0b013e318293a825> PMID: 23751844
24. Wakabayashi H, Uwano R. Rehabilitation nutrition for possible sarcopenic dysphagia after lung cancer surgery: a case report. *Am J Phys Med Rehabil* 2016; 95(6): e84–9 <https://doi.org/10.1097/PHM.000000000000458> PMID: 26829095
25. Johnston AJ, Murphy KT, Jenkinson L, Laine D, Emmrich K, Faou P, et al. Targeting of Fn14 prevents cancer-induced cachexia and prolongs survival. *Cell* 2015; 162: 1365–78 <https://doi.org/10.1016/j.cell.2015.08.031> PMID: 26359988
26. Jung HW, Kim JW, Kim JY, Kim SW, Yang HK, Lee JW, et al. Effect of muscle mass on toxicity and survival in patients with colon cancer undergoing adjuvant chemotherapy. *Support Care Cancer* 2015; 23: 687–94 <https://doi.org/10.1007/s00520-014-2418-6> PMID: 25163434
27. Miyamoto Y, Baba Y, Sakamoto Y, Ohuchi M, Tokunaga R, Kurashige J, et al. Negative impact of skeletal muscle loss after systemic chemotherapy in patients with unresectable colorectal cancer. *PLoS One* 2015; 10: e0129742. <https://doi.org/10.1371/journal.pone.0129742> PMID: 26069972
28. Di Sebastiano KM, Yang L, Zbuk K, Wong RK, Chow T, Koff D, et al. Accelerated muscle and adipose tissue loss may predict survival in pancreatic cancer patients: the relationship with diabetes and anaemia. *Br J Nutr.* 2013; 109: 302–12 <https://doi.org/10.1017/S0007114512001067> PMID: 23021109
29. Mishra SI, Scherer RW, Snyder C, Geigle P, Gotay C. The effectiveness of exercise interventions for improving health-related quality of life from diagnosis through active cancer treatment. *Oncol Nurs Forum* 2015; 42: E33–E53 <https://doi.org/10.1188/15.ONF.E33-E53> PMID: 25542333
30. Oldervoll LM, Loge JH, Lydersen S, Paltiel H, Asp MB, Nygaard UV, et al. Physical exercise for cancer patients with advanced disease: a randomized controlled trial. *Oncologist* 2011; 16: 1649–57 <https://doi.org/10.1634/theoncologist.2011-0133> PMID: 21948693
31. Grande AJ, Silva V, Maddocks M. Exercise for cancer cachexia in adults: Executive summary of a Cochrane Collaboration systematic review. *J Cachexia Sarcopenia Muscle* 2015; 6: 208–110 <https://doi.org/10.1002/jcsm.12055> PMID: 26401466