



OPEN ACCESS

## CASE REPORT

# Transformation of jejunoileal follicular lymphoma into diffuse large B-cell lymphoma detected using double-balloon enteroscopy

Tomoyuki Nishimura, Toshio Kuwai, Hiroki Imagawa, Hiroshi Kohno

Department of Gastroenterology, National Hospital Organization Kure Medical Center and Chugoku Cancer Center, Kure, Japan

**Correspondence to**  
Dr Toshio Kuwai,  
kuwait@kure-nh.go.jp

Accepted 21 June 2018

**SUMMARY**

Jejunoileal follicular lymphomas (FLs) are rare and have been reported to undergo histological transformation (HT). We report a case of jejunoileal FL transformation into diffuse large B-cell lymphoma (DLBCL). An 82-year-old woman presented with a 5.5 cm ulcerated jejunal mass, identified through double-balloon enteroscopy. The histopathology report revealed diffuse atypical lymphoid cells, which confirmed the presence of DLBCL. Neoplastic follicles confirmed the presence of FL. Genetic analysis revealed a match between the FL and DLBCL. Following a segmentectomy and chemotherapy, the patient is in remission. Based on this case, we should consider the possibility of jejunoileal FLs transforming into DLBCL.

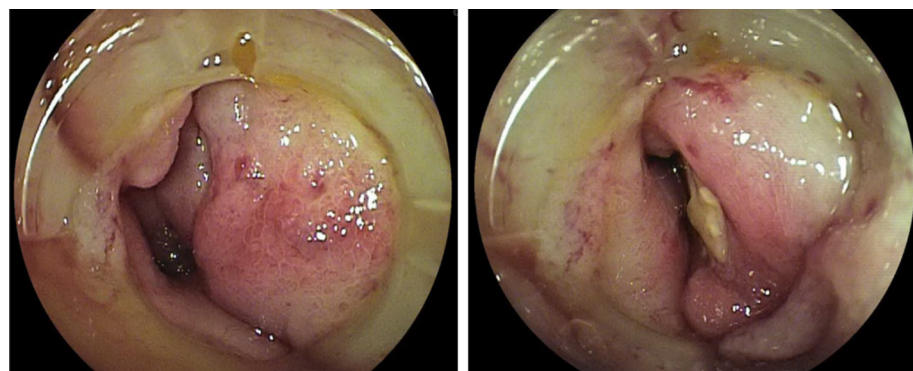
**BACKGROUND**

In extranodal B-cell lymphoma, the gastrointestinal (GI) tract is the most frequently involved site.<sup>1</sup> In most cases of intestinal follicular lymphoma (FL), the lesions are located in the duodenum. However, jejunoileal FL is a rare entity, with an estimated frequency of 1%–3% among non-Hodgkin lymphomas (NHLs) of the GI tract.<sup>2</sup> It can be differentiated from other GI lymphomas such as mucosa-associated lymphoid tissue (MALT) lymphomas and high-grade lymphomas by its characteristic immunohistochemical pattern and genetic analysis. Compared with nodal FL, GI-FL were shown to be unique in that they had ongoing hypermutations as in nodal cases, but the mechanisms involved in the hypermutation were quite different.<sup>3</sup> GI-FL is usually localised and can be followed up without any therapy in most cases. There have been few

reports of histological transformation (HT) of jejunoileal FL. We report the case of transformation of jejunoileal FL into diffuse large B-cell lymphoma (DLBCL) detected using double-balloon enteroscopy (DBE). The procedures followed were in accordance with the Declaration of Helsinki and the study was reviewed and approved by The National Hospital Organization Kure Medical Center and Chugoku Cancer Center and informed consent was obtained from the patient.

**CASE PRESENTATION**

An 82-year-old Japanese woman was experiencing nausea with vomiting after eating meals since a month. She had also experienced 4 kg weight loss in a month; she then visited our hospital. She had no significant medical history. She was conscious and had no fever. On physical examination, she exhibited tenderness in the abdomen without obvious rebound tenderness or guarding. Her bowel sounds were slightly decreased. CT revealed a 5.5 cm mass in the small intestine and swelling of the paraaortic and inguinal lymph nodes (LNs). Retrograde DBE showed multiple whitish nodules in the ileum. Furthermore, a follicular dendritic cell pattern was identified in the biopsy specimen obtained from the ileum. Inguinal LN and bone marrow biopsies also showed FLs. She exhibited no B symptoms. Peroral DBE revealed a large ulcerated mass in the jejunum (figure 1), and a follicular dendritic cell pattern was identified in the biopsy specimen. The patient was subsequently diagnosed with jejunum obstruction due to FL, and a jejunum segmentectomy was performed (figure 2). Histopathology showed that

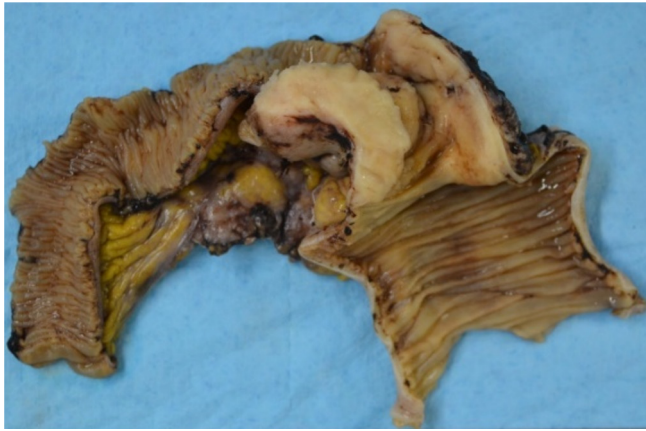


**Figure 1** Peroral double-balloon enteroscopy shows stenosis due to a large ulcerated mass in the jejunum.



© BMJ Publishing Group Limited. Re-use permitted under CC BY-NC. No commercial re-use. See rights and permissions. Published by BMJ.

**To cite:** Nishimura T, Kuwai T, Imagawa H, et al. *BMJ Case Rep* Published Online First: [please include Day Month Year]. doi:10.1136/bcr-2018-224467



**Figure 2** The resected jejunum tumour measured 60×50 mm.

60% of the tumour cells were composed of diffuse infiltrates consisting of large-sized atypical lymphoid cells, and neoplastic follicles were present elsewhere (figure 3). Immunohistochemical findings revealed the former was DLBCL, and the latter was FL. Tumour cells presented CD20+ (figure 4A), CD3- (figure 4B), CD5- (figure 4C), CD10+ (figure 4D), BCL2+ (figure 4E) and cyclin D1- (figure 4F) by immunohistochemistry and the Ki-67 labelling index was high (80.89%) (figure 4G.). At this point, the patient was diagnosed with DLBCL. PCR analysis showed that the clone of the inguinal LN FL was identical to the DLBCL tumour cell. Immunoglobulin heavy chain rearrangement peaks of both samples were detected at the same size (300 nt). The patient was diagnosed with DLBCL transformed from FL. The patient received postoperative rituximab, cyclophosphamide, doxorubicin, vincristine and prednisolone treatment.

#### DIFFERENTIAL DIAGNOSIS

Using DBE.

#### TREATMENT

A jejunum segmentectomy and postoperative chemotherapy (rituximab, cyclophosphamide, doxorubicin, vincristine and prednisone).

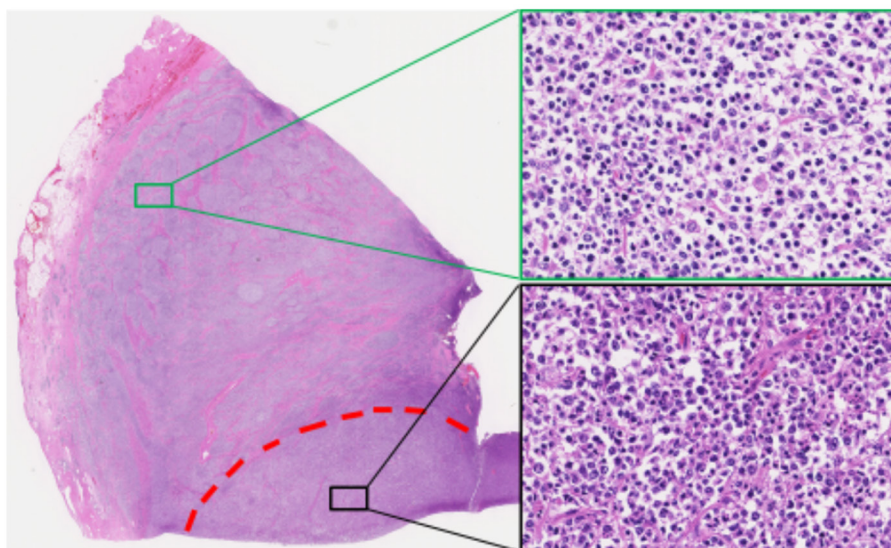
#### OUTCOME AND FOLLOW-UP

The LNs reduced remarkably, and no new lesions have emerged so far.

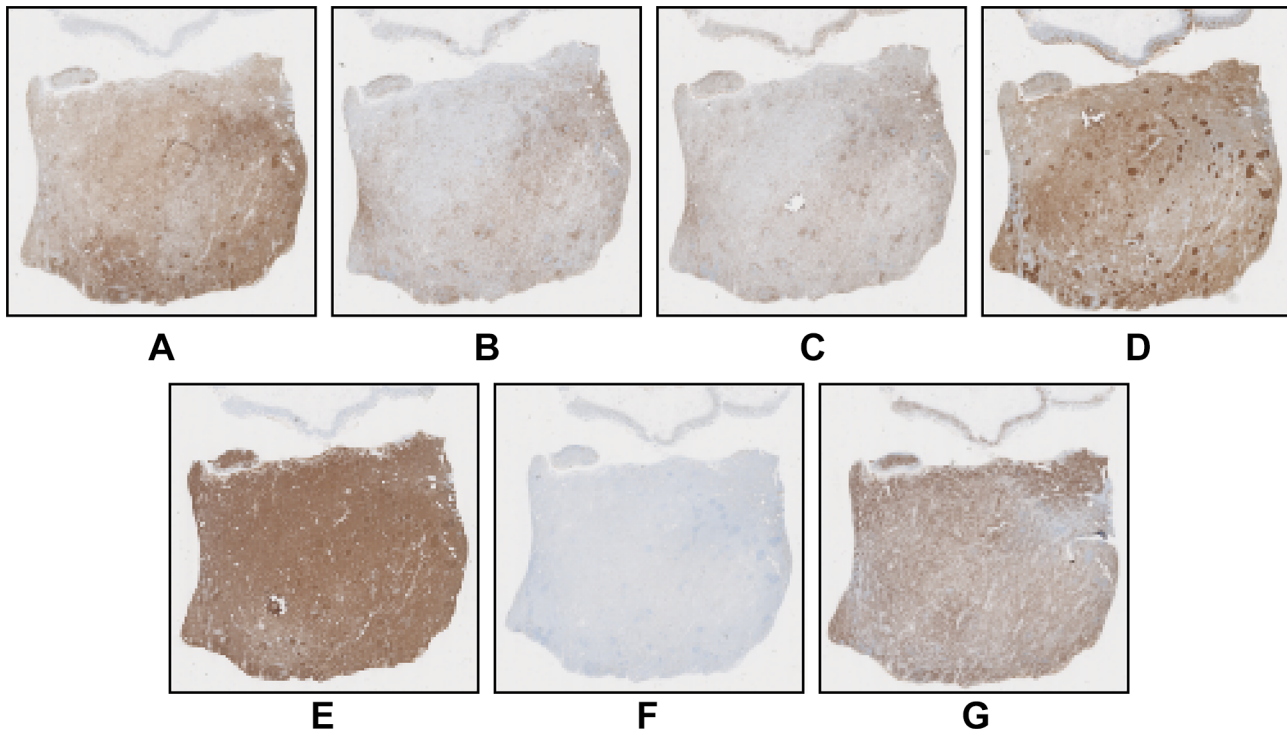
#### DISCUSSION

In this report, we have presented the case of jejunoileal FL that had transformed into DLBCL. Miyata-Takata *et al* recently reported on the case of DLBCL transformed from primary duodenal FL.<sup>3</sup> After that report, Kitabatake *et al* also reported the development of DLBCL from FL of the duodenum in endoscopic findings.<sup>4</sup> Although there are a few reports of cases transformed from duodenal FL, a case of transformed jejunoileal FL is rare. The reason why the jejunum is not usually evaluated in detail for a check-up if abdominal symptoms are absent is because of anatomical difficulties with diagnostic approaches to the jejunum. On the contrary, the GI tract is the most commonly involved extranodal site of NHLs. Compared with the prognosis of nodal FL, the prognosis of intestinal FL (including duodenal FL) is excellent. Intestinal FL shares characteristics with MALT lymphomas,<sup>5</sup> and patients with intestinal FL are usually managed using the watch-and-wait strategy, in resemblance to those with MALT lymphoma of the intestine. However, intestinal DLBCLs usually cause perforation and stenosis, which is suggestive of poor prognosis. Therefore, if it is possible for intestinal FL to transform to DLBCL, it needs to be detected as soon as possible and requires regular careful monitoring. In the present case, intestinal FL underwent severe stricture in the small intestine because it transformed from FL to DLBCL.

Examination of the small intestine is critical when NHL lesions are found in the GI tract because better therapies could be selected based on the findings. Capsule endoscopy (CE) and DBE can detect jejunoileal lesions of lymphoma, but biopsy samples can only be obtained using DBE. Due to advances in DBE, various types of malignant lymphomas of the small intestine have been observed at very early stages.<sup>6</sup> CT is also useful; however, it is difficult to monitor FL in its early stage using CT. Kodama *et al* recommended monitoring FLs as long as possible because of the risk of relapse.<sup>7</sup> Akiyama *et al* have reported a similar case involving the duodenum. They suggest that the life-time follow-up that is usually performed for patients with nodal FL should also be provided to patients with duodenal FL.<sup>8</sup> Even though jejunoileal lesions were



**Figure 3** There were two tumour components: DLBCL (black square) and FL (green square). DLBCL, diffuse large B-cell lymphoma; FL, follicular lymphoma.



**Figure 4** Immunohistochemistry revealed cells that were: (A) CD 20+, (B) CD3-, (C) CD5-, (D) CD10+, (E) BCL2+, (F) cyclin D1 and (G) Ki-67.

found in this case, we can assume that life-time follow-up would also be beneficial for our patient. Currently, there are insufficient data regarding optimal intervals for these examinations. However, El-Galaly *et al* have reported that the 10-year cumulative risk of FL HT was 22%.<sup>9</sup> Therefore, we recommend monitoring every 6 months at least. As DBE is widely used, the detection rate of jejunoileal FL has increased. The characteristic endoscopic appearance is a polypoid nodule.<sup>10</sup> On the contrary, DLBCL can cause ulcers, stenosis and perforation.<sup>11</sup> They require a completely different treatment strategy, so it is very important to confirm using DBE.

In summary, the final diagnosis of the present case was DLBCL that had transformed from jejunoileal FL. We have reported a case of HT from jejunoileal FL detected using DBE. There is no doubt that the clinical watch-and-wait strategy for intestinal FL without obstruction should be implemented. Furthermore, no matter how anatomically difficult diagnostic approaches may be, such as in the jejunoileum, they need to be followed up via DBE or CE regularly.

### Learning points

- ▶ Jejunoileal follicular lymphoma (FL) transformation into diffuse large B-cell lymphoma may occur and therefore should be considered in patients with intestinal FL. The life-time follow-up that is usually performed for patients with nodal FL should also be provided to patients with intestinal FL.
- ▶ No matter how anatomically difficult diagnostic approaches may be, such as in the jejunoileum, intestinal FL need to be followed up via double-balloon enteroscopy or capsule endoscopy regularly.

**Acknowledgements** The authors thank Naoko Matsumoto for assistance in administrative support.

**Contributors** TK assessed the patient. TN and HI wrote the manuscript. HK critically reviewed the manuscript.

**Funding** The authors have not declared a specific grant for this research from any funding agency in the public, commercial or not-for-profit sectors.

**Competing interests** None declared.

**Patient consent** Obtained.

**Provenance and peer review** Not commissioned; externally peer reviewed.

**Open access** This is an open access article distributed in accordance with the Creative Commons Attribution Non Commercial (CC BY-NC 4.0) license, which permits others to distribute, remix, adapt, build upon this work non-commercially, and license their derivative works on different terms, provided the original work is properly cited, appropriate credit is given, any changes made indicated, and the use is non-commercial. See: <http://creativecommons.org/licenses/by-nc/4.0/>.

### REFERENCES

- 1 Sabattini E, Bacci F, Sagrmoso C, *et al*. WHO classification of tumours of haematopoietic and lymphoid tissues in 2008: an overview. *Pathologica* 2010;102:83–7.
- 2 Kawasaki K, Nakamura S, Kurahara K, *et al*. Primary small-bowel follicular lymphoma with a stenosis: radiographic and endoscopic findings. *Gastrointest Endosc* 2016;83:267–8.
- 3 Miyata-Takata T, Takata K, Sato Y, *et al*. A case of diffuse large B-cell lymphoma transformed from primary duodenal follicular lymphoma. *Pathol Int* 2014;64:527–32.
- 4 Kitabatake H, Nagaya T, Tanaka N, *et al*; *Development of diffuse large B-cell lymphoma of the duodenum: changes in endoscopic findings during a 6-year follow-up*.
- 5 Takata K, Tanino M, Ennishi D, *et al*. Duodenal follicular lymphoma: comprehensive gene expression analysis with insights into pathogenesis. *Cancer Sci* 2014;105:608–15.
- 6 Okada E, Araki A, Suzuki S, *et al*. Histological diagnosis of follicular lymphoma by biopsy of small intestinal normal mucosa. *Dig Endosc* 2013;25:544–6.
- 7 Kodama M, Kitadai Y, Shishido T, *et al*. Primary follicular lymphoma of the gastrointestinal tract: a retrospective case series. *Endoscopy* 2008;40:343–6.
- 8 Akiyama S, Izutsu K, Ota Y, *et al*. A case report of the histologic transformation of primary follicular lymphoma of the duodenum. *Medicine* 2014;93:e165.
- 9 El-Galaly TC, Bilgrau AE, de Nully Brown P, *et al*. A population-based study of prognosis in advanced stage follicular lymphoma managed by watch and wait. *Br J Haematol* 2015;169:435–44.
- 10 Yamada S, Koshikawa Y, Minami N, *et al*. Ileal follicular lymphoma with atypical endoscopic findings. *Endosc Int Open* 2016;4:E323–E325.
- 11 Ibuka T, Tsurumi H, Araki H, *et al*. Clinical significance of jejunoileal involvement of non-Hodgkin's lymphoma detected by double-balloon enteroscopy. *Int J Hematol* 2013;97:369–81.

Copyright 2018 BMJ Publishing Group. All rights reserved. For permission to reuse any of this content visit <http://group.bmj.com/group/rights-licensing/permissions>.  
BMJ Case Report Fellows may re-use this article for personal use and teaching without any further permission.

Become a Fellow of BMJ Case Reports today and you can:

- ▶ Submit as many cases as you like
- ▶ Enjoy fast sympathetic peer review and rapid publication of accepted articles
- ▶ Access all the published articles
- ▶ Re-use any of the published material for personal use and teaching without further permission

For information on Institutional Fellowships contact [consortiasales@bmjgroup.com](mailto:consortiasales@bmjgroup.com)

Visit [casereports.bmj.com](http://casereports.bmj.com) for more articles like this and to become a Fellow