

RESEARCH

Open Access

# KL-6 concentration in pulmonary epithelial lining fluid is a useful prognostic indicator in patients with acute respiratory distress syndrome

Tomohiro Kondo<sup>1</sup>, Noboru Hattori<sup>1\*</sup>, Nobuhisa Ishikawa<sup>1</sup>, Hiroshi Murai<sup>1</sup>, Yoshinori Haruta<sup>1</sup>, Nobuyuki Hirohashi<sup>2</sup>, Koichi Tanigawa<sup>2</sup>, Nobuoki Kohno<sup>1</sup>

## Abstract

**Background:** KL-6 is a mucin-like glycoprotein expressed on the surface of alveolar type II cells. Elevated concentrations of KL-6 in serum and epithelial lining fluid (ELF) in patients with acute respiratory distress syndrome (ARDS) have been previously reported; however, kinetics and prognostic significance of KL-6 have not been extensively studied. This study was conducted to clarify these points in ARDS patients.

**Methods:** Thirty-two patients with ARDS who received mechanical ventilation under intubation were studied for 28 days. ELF and blood were obtained from each patient at multiple time points after the diagnosis of ARDS. ELF was collected using a bronchoscopic microsampling procedure, and ELF and serum KL-6 concentrations were measured.

**Results:** KL-6 levels in ELF on days 0 to 3 after ARDS diagnosis were significantly higher in nonsurvivors than in survivors, and thereafter, there was no difference in concentrations between the two groups. Serum KL-6 levels did not show statistically significant differences between nonsurvivors and survivors at any time point. When the highest KL-6 levels in ELF and serum sample from each patient were examined, KL-6 levels in both ELF and serum were significantly higher in nonsurvivors than in survivors. The optimal cut-off values were set at 3453 U/mL for ELF and 530 U/mL for serum by receiver operating characteristic (ROC) curve analyses. Patients with KL-6 concentrations in ELF higher than 3453 U/mL or serum concentrations higher than 530 U/mL had significantly lower survival rates up to 90 days after ARDS diagnosis.

**Conclusions:** ELF and serum KL-6 concentrations were found to be good indicators of clinical outcome in ARDS patients. Particularly, KL-6 levels in ELF measured during the early period after the diagnosis were useful for predicting prognosis in ARDS patients.

## Background

Acute respiratory distress syndrome (ARDS) is characterized by the influx of protein-rich edema fluid into air spaces because of the increased permeability of the alveolar-capillary barrier [1,2]. The important roles of endothelial injury and increased vascular permeability in the formation of pulmonary edema have been well established in this disorder [3]. An intact alveolar epithelial barrier is necessary for preventing alveolar flooding and facilitating recovery from ARDS; therefore, the degree of alveolar

epithelial injury is an important predictor of the outcomes in ARDS [4-6]. When epithelial integrity is lost and alveolar type II cells are injured, normal alveolar epithelial fluid transport and removal of alveolar edema fluid are impaired [7]. Moreover, injury to alveolar type II cells reduces the production and turnover of surfactant [8], and may also cause intrapulmonary bacterial translocation that may lead to bacteremia or sepsis [9]. If injury to the alveolar epithelium is severe, epithelial repair is impaired, which may lead to the development of fibrosis [10].

KL-6 is a high-molecular-weight glycoprotein, classified according to immunohistochemical and flow cytometry study findings as cluster 9 mucin-1 (MUC1) of lung tumor and differentiation antigens [11]. After cleavage of

\* Correspondence: nhattori@hiroshima-u.ac.jp

<sup>1</sup>Department of Molecular and Internal Medicine, Graduate School of Biomedical Sciences, Hiroshima University, 1-2-3 Kasumi, Minami-ku, Hiroshima, 734-8551, Japan

Full list of author information is available at the end of the article

the S-S bond near the surface of the epithelial cell membrane, KL-6 can diffuse into pulmonary epithelial lining fluid (ELF). In the normal lung, this glycoprotein can be predominantly found on alveolar type II epithelial cells, and its expression is greatly increased in proliferating, regenerating, or injured alveolar type II cells [12-14]. Previous studies have demonstrated that serum levels of KL-6 are elevated in a variety of interstitial lung diseases that are characterized by alveolar epithelial cell damage [12,14-20]. Because serum levels of KL-6 have been shown to be correlated with indices of alveolar-capillary permeability [15], elevated levels of circulating KL-6 are believed to be associated with its increased leakage from the alveolar space into the circulation.

Previous studies examined KL-6 levels in the serum and pulmonary ELF or bronchoalveolar lavage fluid (BALF) of adult patients with ARDS or acute lung injury (ALI) [13,21-23], and found that the levels of KL-6 were significantly elevated. These studies also reported that the levels of KL-6 in these samples were significantly higher in nonsurvivors than in survivors. Their results suggest that elevated levels of KL-6 may indicate poor prognosis in ARDS patients; however, whether or not KL-6 levels in these samples can predict clinical outcomes in ARDS patients has not yet been studied in detail. Furthermore, none of these studies have reported detailed kinetics of KL-6 levels in ELF and serum in ARDS patients.

In the present study, to further evaluate the clinical significance of KL-6 in ARDS patients, concentrations of KL-6 in ELF and serum were consecutively measured in 32 patients who developed ARDS in our hospital, and the kinetics of KL-6 levels in ELF and serum during 4 weeks after the diagnosis of ARDS were determined. In addition, the associations between KL-6 levels in these samples and patient clinical outcomes were examined.

## Methods

### Study population and protocol

This clinical study was conducted at Hiroshima University Hospital between July 2007 and March 2009. The human research committee of Hiroshima University approved this study, and written informed consent was obtained from each study participant or from immediate family members. Thirty-two patients were prospectively diagnosed with ARDS according to the definition of the American-European Consensus Conference on ARDS. They were included in the study if they met consensus conference oxygenation and radiographic criteria for ARDS, and were followed until death or hospital discharge. The patients who were discharged from the hospital were considered to be survivors.

Bronchoscopic microsampling (BMS) of ELF was performed on days 0, 1, 3, 5, 7, 10, 14, 21, and 28 in each

patient unless the patient had been extubated or had died. The first sample was taken on day 0, within 24 hours after the diagnosis of ARDS. In addition, blood was sampled on days 0, 1, 3, 5, 7, 10, 14, 21, and 28.

### BMS procedure

All studied patients were sedated and preoxygenated ( $\text{FiO}_2 = 1.0$ ). A flexible bronchoscope (BF-6C240; Olympus, Tokyo, Japan) was inserted into the lung through an intra-tracheal tube to examine the airway, and any excess sputum was suctioned. Another identical bronchoscope was then inserted and its tip was advanced into a segmental bronchus of the right middle lobe (S4 or S5), and the BMS procedure was performed as described previously [24]. The BMS probe (Olympus, Tokyo, Japan), consisted of a polyethylene outer sheath 1.7 mm in diameter and an inner fiber rod probe 1.2 mm in diameter and 30 mm in length, attached to a stainless steel guide wire 100 cm in length. Briefly, the probe was inserted into the channel and gently advanced. While the outer sheath was set at the target in the subsegmental bronchus, the inner probe was advanced slowly into the peripheral airway until it contacted the mucosal surface, and it was held in that position for 5-7 seconds, thus allowing the fiber rod to absorb approximately 20  $\mu\text{L}$  of ELF. The inner probe was then withdrawn into the outer sheath, and they were removed together. The wet inner probe was cut, placed in a tube, and stored in a freezer at  $-80^\circ\text{C}$  until analysis. The procedure was performed in triplicate from the same subsegmental bronchus.

The stored frozen probes were weighed before the ELF saline suspension was prepared. Diluted ELF sample solutions were prepared for biochemical analysis by adding the 3 frozen probes that had been sampled from the same lung subsegment to a 15 mL polyethylene tube containing 3 mL of saline, which was then vortexed for 1 minute. The solution was centrifuged for 15 minutes at 3,000 rpm, and the supernatant was collected. The probes were dried and weighed to calculate the ELF volume recovered. The dilution factor was calculated as follows:  $\text{ELF volume (mL)} / (3 \text{ mL} + \text{ELF volume [mL]})$ .

In vitro experiments have confirmed that the absorption of 2-20  $\mu\text{L}$  of human serum by the fiber rod probe allowed a >93% recovery of biochemical constituents. The recovery was 96.1% for albumin, 93.7% for lactate dehydrogenase (LDH), and 95.3% for KL-6.

### Measurements of KL-6

KL-6 levels in the serum and ELF samples were measured by a sandwich-type electrochemiluminescent immunoassay (ECLIA) using a Picolumi 8220 Analyzer (Sanko Junyaku, Tokyo, Japan), as previously described [25]. In brief, the sample was incubated with anti-KL-6 antibody-coated magnetic beads and the beads were

then separated using a magnetic rack. Ruthenium-labeled anti-KL-6 antibody was added to the beads as a second antibody, following a PBS wash. The reaction mixture was placed into an electrode, and the photons emitted from the ruthenium were measured by a photomultiplier.

### Statistical analysis

Statistical significance was defined as  $p < 0.05$ . Differences in variables between survivors and nonsurvivors were compared using the nonparametric Mann-Whitney  $U$ -test, since the data were not normally distributed. The variables at each time point in survivors and nonsurvivors during 4 weeks after the diagnosis of ARDS were compared using both one-way analysis of variance (ANOVA) and test for linear trend with multiple comparisons. Receiver operating characteristic (ROC) curve analysis was used to assess KL-6 in ELF as a prognostic indicator in ARDS patients. Survival until 90 days after the diagnosis was evaluated by the Kaplan-Meier method. The difference in survival between two groups was analyzed by the log-rank test. All patients included into the study were followed-up until 90 days after the diagnosis of ARDS.

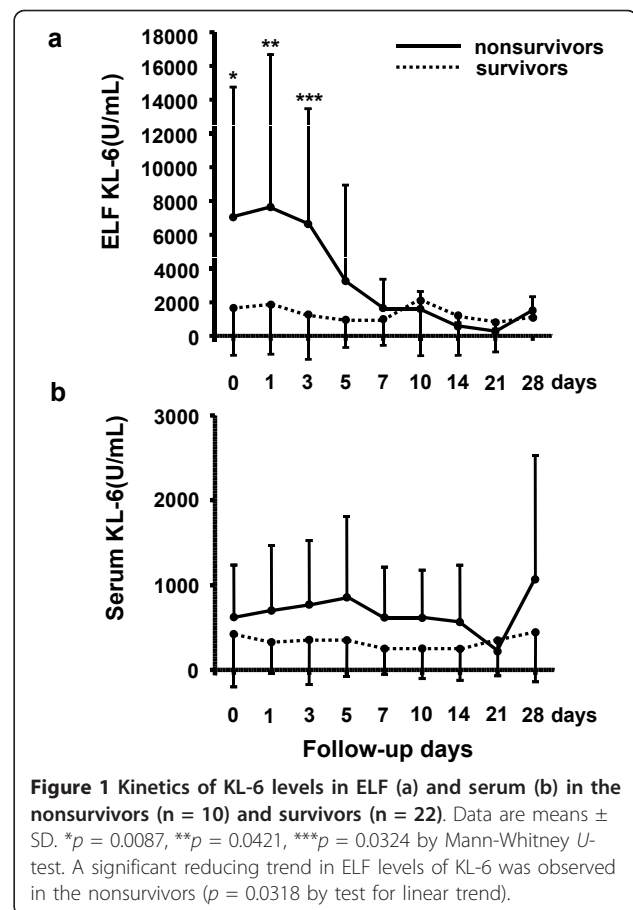
## Results

### Characteristics of patients

Thirty-two consecutive patients with ARDS who were treated with controlled mechanical ventilation in the intensive care unit were studied between July 2007 and March 2009. The primary disorders in these patients were pneumonia ( $n = 10$ ), sepsis ( $n = 10$ ), gastric aspiration ( $n = 5$ ), liver failure ( $n = 2$ ), alveolar hemorrhage ( $n = 1$ ), interstitial pneumonia ( $n = 1$ ), hypersensitivity pneumonia ( $n = 1$ ), drug-induced pneumonia ( $n = 1$ ), and chest trauma ( $n = 1$ ). The patients with interstitial pneumonia, hypersensitivity pneumonia, and drug-induced pneumonia were confirmed to have had stable respiratory condition before the onset of ARDS and the apparent superimposition of pulmonary infection in these three patients was denied by the analysis of BALF. The mean age ( $\pm$  SD) was  $70.1 \pm 11.7$  years, and 27 patients were males. The initial mean value ( $\pm$  SD) for  $\text{PaO}_2/\text{FIO}_2$  was  $108.6 \pm 39.8$ , and the in-hospital mortality rate was 31.3%.

### KL-6 levels in ELF and serum samples of survivors and nonsurvivors

The kinetics of KL-6 levels in ELF and serum samples were first compared between the survivors and nonsurvivors. The KL-6 levels in ELF were significantly higher in nonsurvivors than in the survivors on days 0 ( $p = 0.0087$ ), 1 ( $p = 0.0421$ ), and 3 ( $p = 0.0324$ ) (Figure 1a). The variables at each time point were compared in the



survivors and nonsurvivors using one-way ANOVA and no statistical differences were found in each comparison. However, only in the nonsurvivors, a reducing trend in ELF levels of KL-6 as time passed after the diagnosis of ARDS was observed (test for linear trend,  $p = 0.0318$ ). There were no significant differences seen in serum KL-6 levels between survivors and nonsurvivors at any time point throughout the clinical courses of the patients (Figure 1b). To obtain more information on the clinical significance of KL-6 in ARDS, we selected the highest ELF and serum KL-6 concentrations among the series of measurements in each patient and compared the results between survivors and nonsurvivors. The highest concentrations of KL-6 in ELF were observed on days  $2.7 \pm 3.3$  in the nonsurvivors; whereas the peak levels in the survivors occurred on days  $3.6 \pm 4.4$ . The mean highest concentrations of KL-6 in ELF were  $10733.6 \pm 7793.1$  U/mL in the nonsurvivors and  $3282.3 \pm 3474.1$  U/mL in the survivors. The highest concentrations of KL-6 in serum were observed on days  $5.8 \pm 8.4$  in the nonsurvivors; whereas the peak levels in the survivors occurred on days  $2.6 \pm 4.5$ . The mean highest concentrations of KL-6 in serum were  $1060.8 \pm 989.8$  U/mL in the nonsurvivors and  $466.8 \pm 602.1$  U/mL

in the survivors. The highest KL-6 levels in ELF and serum were significantly higher in the nonsurvivors than in the survivors ( $p = 0.0025$ , Figure 2a; and  $p = 0.0401$ , Figure 2b; respectively). In addition to the comparisons of the KL-6 levels between the survivors and nonsurvivors, the highest KL-6 levels in ELF and serum among the series of measurements were compared between the patients with primary ( $n = 20$ ) and secondary ( $n = 12$ ) ARDS or between the patients with ( $n = 3$ ) and without ( $n = 29$ ) preexisting interstitial lung disease (ILD). In each comparison, we found no significant difference between the two groups of the patients (data not shown).

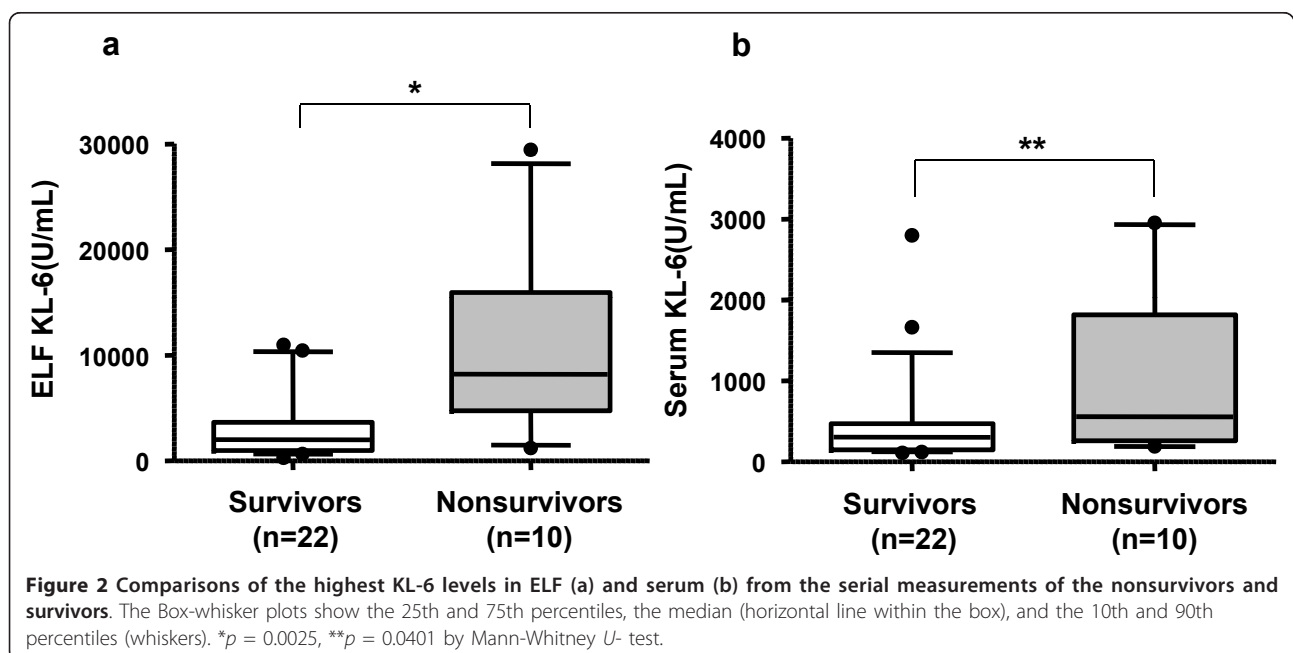
#### Prognostic values of KL-6 levels in pulmonary ELF and serum obtained from ARDS patients

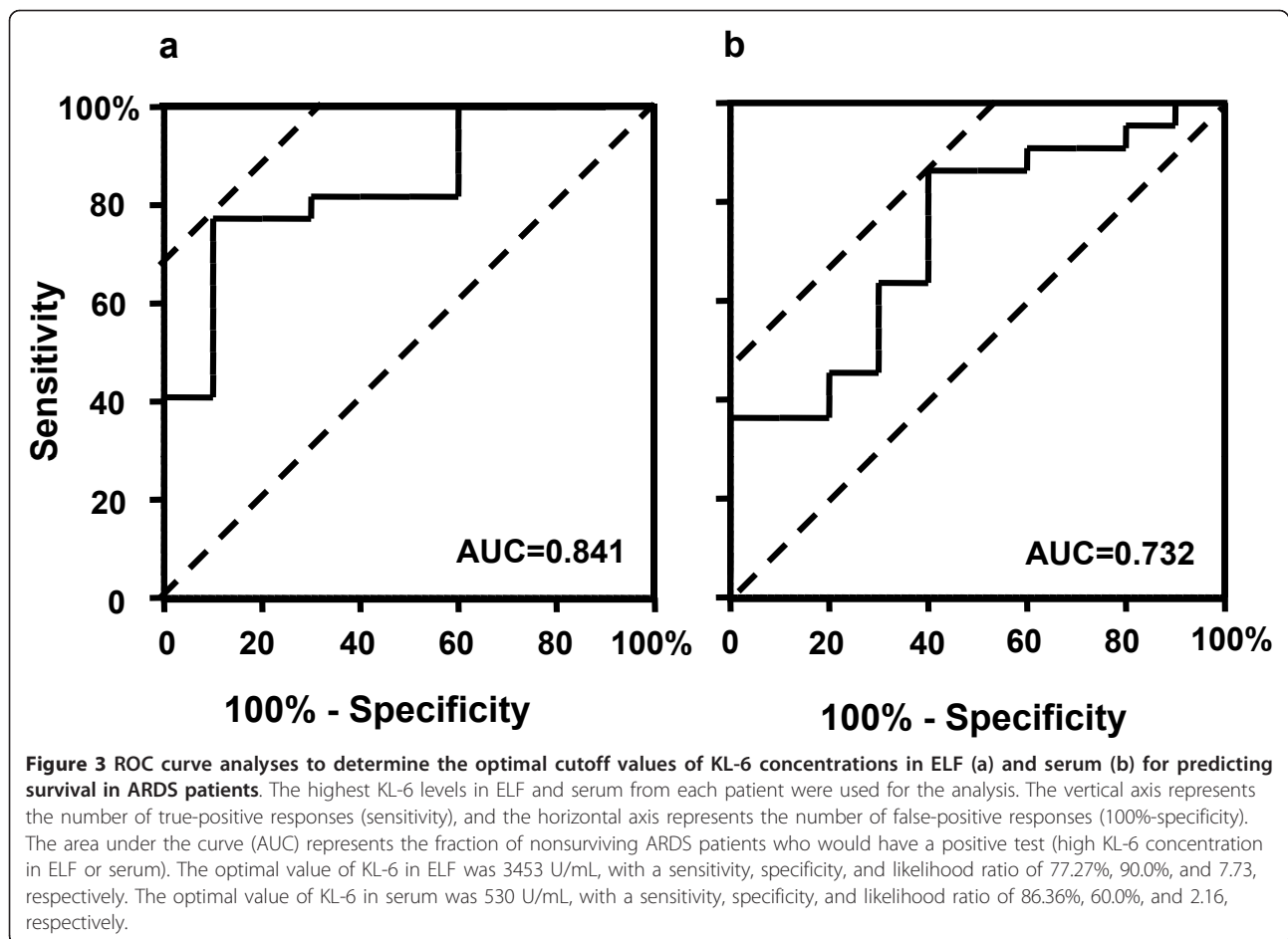
To obtain optimal cut-off values for KL-6 in ELF and serum for prognostic assessment in ARDS patients, receiver operating characteristic (ROC) curve analyses were performed using the highest concentrations of KL-6 measured in the serial ELF (Figure 3a) and serum (Figure 3b) samples. For predicting the risk of mortality, the optimal cut-off value for KL-6 in ELF was 3453 U/mL, with a sensitivity, specificity, and likelihood ratio of 77.27%, 90.0%, and 7.73, respectively. Nine out of 14 patients with ELF KL-6 levels  $> 3453$  U/mL died; whereas only 1 death was observed in the 18 patients with ELF KL-6 levels  $< 3453$  U/mL died ( $p = 0.0006$ ). The optimal cut-off value of KL-6 in serum was found to be 530 U/mL, with a sensitivity, specificity, and likelihood ratio of 86.36%, 60.0%, and 2.16, respectively. Whereas 6 out of 9 patients with serum KL-6 levels  $> 530$  U/mL died, only 4 out of 23

patients with serum KL-6 levels  $< 530$  U/mL died ( $p = 0.0126$ ). Based on these cut-off values, overall survivals up to 90 days after the diagnosis of the ARDS were determined using the Kaplan-Meier method. The survival of patients with concentrations of KL-6 in ELF higher than 3453 U/mL was significantly poorer than the survival of patients with lower KL-6 concentrations ( $p = 0.0004$ , Figure 4a). Similarly, the survival of patients with higher serum KL-6 levels ( $> 530$  U/mL) was significantly poorer than the survival of patients with lower serum KL-6 levels ( $p = 0.0075$ , Figure 4b).

#### Discussion

In this study, we measured KL-6 concentrations in pulmonary ELF samples and serum samples obtained at multiple time points from ARDS patients. When the kinetics of KL-6 levels in ELF and serum were compared between the survivors and nonsurvivors, only the levels of KL-6 in ELF on days 0 to 3 after the diagnosis of ARDS were significantly higher in the nonsurvivors than in the survivors. There were no differences between survivors and nonsurvivors in KL-6 concentrations in ELF samples at other time points, and there were no significant differences in serum KL-6 levels between the survivors and nonsurvivors at any time point. However, when the highest serum KL-6 levels from the serial samples from each patient were compared between the survivors and nonsurvivors, statistically significant higher serum KL-6 levels were seen in the nonsurvivors. In addition, KL-6 levels in ELF higher than 3453 U/mL and KL-6 levels in serum higher than 530 U/mL were



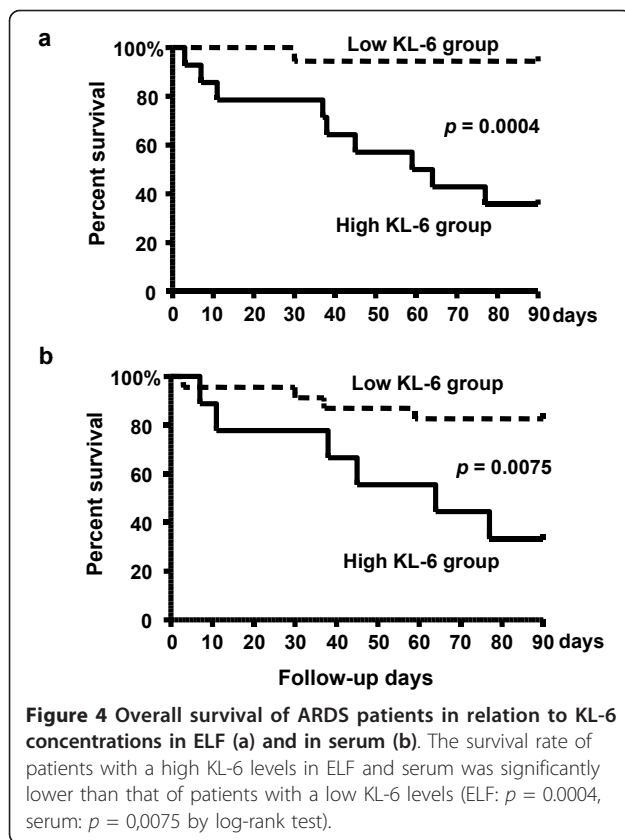


shown to be significant prognostic factors for predicting poor overall survival up to 90 days after the diagnosis of ARDS.

The most important finding in the present study was that the marked elevation of ELF KL-6 within 3 days after the diagnosis appeared to correlate with poor prognosis in ARDS patients. This observation was supported by the following study results: KL-6 levels in ELF were significantly elevated in the nonsurvivors on days 0 to 3 after the diagnosis of ARDS compared to the survivors, and the patients with KL-6 levels in ELF higher than 3453 U/mL had significantly poorer prognosis than those with lower KL-6 levels in ELF. Lung compartment KL-6 is believed to be produced and released by proliferating alveolar type II cells following injury to alveolar type I cells [21], and therefore its level must reflect the severity of alveolar epithelial injury. The degree of alveolar epithelial injury is believed to be an important predictor of outcomes in patients with ARDS [2,26]. Based on these concepts, a very high KL-6 level in ELF can be regarded as an indicator of very severe alveolar epithelial damage, and a predictor of poor prognosis in ARDS. In turn, our data suggest that measurement of KL-6 levels in ELF,

particularly during the early period after ARDS diagnosis, is useful for assessing the degree of alveolar epithelial damage and predicting overall clinical outcome.

Another interesting finding was that in the nonsurvivors, the significantly elevated levels of KL-6 in ELF were only observed on days 0 to 3 after ARDS diagnosis, and thereafter, the levels of KL-6 in ELF were similar to the levels in the survivors. In fact, the highest concentrations of KL-6 in ELF were observed on days  $2.7 \pm 3.3$  in the nonsurvivors; whereas in the survivors, they occurred on days  $3.6 \pm 4.4$ . Therefore, we can suggest that at least one BMS procedure within 3 days after the diagnosis of ARDS is sufficient to predict the clinical outcome and the KL-6 levels in ELF obtained from 4 days after the diagnosis may have less impact on the prediction of prognosis. Unfortunately, we do not have convincing data to explain why levels of KL-6 in ELF in the nonsurvivors dropped to the same levels as those in the survivors. It has been suggested that alveolar type II cells can proliferate when alveolar epithelial cell damage is mild or moderate, but when the damage is very severe, even type II cells cannot survive and are replaced by the epithelial cells of bronchial origin [27,28]. Furthermore, if



the alveolar epithelial injury is too severe for recovery, insufficient or disorganized epithelial repair occurs, resulting in the development of fibrosis [2]. Based on these concepts, we can speculate that in the nonsurvivors, the alveolar type II cells could initially proliferate during the early stages of ARDS, leading to elevated KL-6 pulmonary ELF concentrations; however, after development of severe alveolar epithelial damage, the type II cells died or disorganized epithelial repair occurred, leading to decrease in level of KL-6 in ELF.

In contrast to the results of previous reports [13,22,23], there were no statistically significant differences in serum KL-6 levels between the nonsurvivors and survivors observed at any time points among the serial measurements. Serum KL-6 levels at each time point tended to be higher in the nonsurvivors than in the survivors; therefore we believe that if our study would be larger, statistically significant differences could have been seen. Indeed, when the highest serum level of KL-6 from the serial measurements in each patient was used for comparisons, it was significantly higher in the nonsurvivors than in the survivors. In addition, the patients with the highest serum KL-6 levels that were higher than 530 U/mL were found to have poorer prognosis than the other patients. In children with ARDS, circulating levels of KL-6 were also reported to be higher in the

nonsurvivors than the survivors [29]. These data suggest that serum KL-6 concentrations also reflect the degree of alveolar epithelial injury and may be useful for predicting clinical outcomes in patients with ARDS. However, we believe that the concentration of KL-6 in ELF is a more sensitive indicator of alveolar epithelial injury, and is thus a more useful predictor of clinical outcome than the serum KL-6 level, because it provides more immediate information on events taking place in the lung.

Because KL-6 is mainly expressed in alveolar type II epithelial cells and a sensitive biomarker to detect the presence of ILD, we questioned whether there was a difference in KL-6 levels in ELF and serum between the patients with primary and secondary ARDS or between the patients with and without preexisting ILD. Interestingly, we found no significant difference in each comparison. These data suggest that KL-6 levels in ELF and serum were not affected by the cause of ARDS. In addition, the presence of preexisting ILD seemed not to influence the KL-6 levels in ELF and serum after developing ARDS. However, we believe that the number of cases with preexisting ILD was too small (only three) to reach the latter conclusion and, therefore, further study on this issue is necessary.

Although promising results were obtained, we are aware that this study has some limitations. The number of patients included in the study was not sufficient to confirm previous observations that circulating KL-6 levels were significantly higher in nonsurvivors than survivors, particularly during the early period after the onset of ARDS [13,22,23]. The BMS procedure has an intrinsic limitation, in that exploratory sampling in the lung is limited. Additional study measuring KL-6 in ELF from different sampling sites in the lungs of each ARDS patient is necessary.

## Conclusion

Concentrations of KL-6 in pulmonary ELF early after ARDS diagnosis were found to be significantly higher in nonsurviving patients than in surviving patients. Furthermore, ARDS patients with higher KL-6 levels in ELF or serum had significantly poorer prognosis than those with lower KL-6 levels. The levels of KL-6 in ELF and serum may reflect the degree of alveolar epithelial injury, and may therefore be valuable indicators of outcome in ARDS. Particularly, the concentration of KL-6 in ELF measured during the early period after the diagnosis appears to be a useful marker for predicting prognosis in ARDS patients.

## List of abbreviations

ALI: acute lung injury; ANOVA: analysis of variance; ARDS: acute respiratory distress syndrome; AUC: area under the curve; BALF: bronchoalveolar lavage

fluid; BMS: bronchoscopic microsampling; ELF: epithelial lining fluid; ILD: interstitial lung disease; ROC: receiver operating characteristic

#### Acknowledgements

We thank Dr. K. Yoshioka, Department of Molecular and Internal Medicine, Graduate School of Biomedical Sciences, Hiroshima University; and N. Ohtani and K. Ohta, department of Emergency and Critical Care Medicine, Hiroshima University Hospital for their excellent technical assistance and advice.

This work is supported by grants from Grants-in-Aid for Scientific Research, and the Ministry of Health, Labour and Welfare of Japan.

#### Author details

<sup>1</sup>Department of Molecular and Internal Medicine, Graduate School of Biomedical Sciences, Hiroshima University, 1-2-3 Kasumi, Minami-ku, Hiroshima, 734-8551, Japan. <sup>2</sup>Department of Emergency and Critical Care Medicine, Hiroshima University Hospital, 1-2-3 Kasumi, Minami-ku, Hiroshima, 734-8551, Japan.

#### Authors' contributions

TK designed the study, performed the data analysis and interpretation, and wrote the manuscript. NH and NI designed the study, interpreted the data, and edited the manuscript. HM, YH, NH, KT, and NK interpreted the data and helped to draft the manuscript. All authors read and approved the final manuscript.

#### Competing interests

The authors declare that they have no competing interests.

Received: 9 November 2010 Accepted: 22 March 2011

Published: 22 March 2011

#### References

- Pugin J, Verghese G, Widmer MC, Matthay MA: **The alveolar space is the site of intense inflammatory and profibrotic reactions in the early phase of acute respiratory distress syndrome.** *Crit Care Med* 1999, **27**:304-312.
- Ware LB, Matthay MA: **Medical progress: the acute respiratory distress syndrome.** *N Engl J Med* 2000, **342**:1334-1349.
- Brigham KL: **Lung edema due to increased vascular permeability.** In *Lung Water and Solute Exchange*. Edited by: Staub NC. New York: Dekker; 1978:235-276.
- Matthay MA, Wiener-Kronish JP: **Intact epithelial barrier function is critical for the resolution of alveolar edema in humans.** *Am Rev Respir Dis* 1990, **142**:1250-1257.
- Pittet JF, Mackersie RC, Martin TR, Matthay MA: **Biological markers of acute lung injury: prognostic and pathogenetic significance.** *Am J Respir Crit Care Med* 1997, **155**:1187-1205.
- Wiener-Kronish JP, Albertine KH, Matthay MA: **Differential responses of the endothelial and epithelial barriers of the lung in sheep to *Escherichia coli* endotoxin.** *J Clin Invest* 1991, **88**:864-875.
- Modelska K, Pittet JF, Folkesson HG, Courtney Broaddus V, Matthay MA: **Acid-induced lung injury. Protective effect of anti-interleukin-8 pretreatment on alveolar epithelial barrier function in rabbits.** *Am J Respir Crit Care Med* 1999, **160**:1450-1456.
- Greene KE, Wright JR, Steinberg KP, Ruzinski JT, Caldwell E, Wong WB, Hull W, Whitsett JA, Akino T, Kuroki Y, Nagae H, Hudso LD, Martin TR: **Serial changes in surfactant-associated proteins in lung and serum before and after onset of ARDS.** *Am J Respir Crit Care Med* 1999, **160**:1843-1850.
- Kurahashi K, Kajikawa O, Sawa T, Ohara M, Gropper MA, Frank DW, Martin TR, Wiener-Kronish JP: **Pathogenesis of septic shock in *Pseudomonas aeruginosa* pneumonia.** *J Clin Invest* 1999, **104**:743-750.
- Bitterman PB: **Pathogenesis of fibrosis in acute lung injury.** *Am J Med* 1992, **92**:39S-43S.
- Stahel RA, Gilks WR, Lehmann HP, Schenker T: **Third international workshop on lung tumor and differentiation antigens: overview of the results of the central data analysis.** *Int J Cancer Suppl* 1994, **8**:6-26.
- Kohno N, Kyoizumi S, Awaya Y, Fukuhara H, Yamakido M, Akiyama M: **New serum indicator of interstitial pneumonitis activity. Sialylated carbohydrate antigen KL-6.** *Chest* 1989, **96**:68-73.
- Ishizaka A, Matsuda T, Albertine KH, Koh H, Tasaka S, Hasegawa N, Kohno N, Kotani T, Morisaki H, Takeda J, Nakamura M, Fang X, Martin TR, Matthay MA, Hashimoto S: **Elevation of KL-6, a lung epithelial cell marker, in plasma and epithelial lining fluid in acute respiratory distress syndrome.** *Am J Physiol Lung Cell Mol Physiol* 2004, **286**:L1088-L1094.
- Kohno N, Awaya Y, Oyama T, Yamakido M, Akiyama M, Inoue Y, Yokoyama A, Hamada H, Fujioka S, Hiwada K: **KL-6, a mucin-like glycoprotein, in bronchoalveolar lavage fluid from patients with interstitial lung disease.** *Am Rev Respir Dis* 1993, **148**:637-642.
- Oyama T, Kohno N, Yokoyama A, Hirasawa Y, Hiwada K, Oyama H, Okuda Y, Takasugi K: **Detection of interstitial pneumonitis in patients with rheumatoid arthritis by measuring circulating levels of KL-6, a human MUC1 mucin.** *Lung* 1997, **175**(6):379-385.
- Kohno N, Yokoyama A, Hirasawa Y, Kondo K, Fujino S, Abe M, Hiwada K: **Comparative studies of circulating KL-6, type III procollagen N-terminal peptide and type IV collagen 7 S in patients with interstitial pneumonitis and alveolar pneumonia.** *Respir Med* 1997, **91**(9):558-561.
- Hamada H, Kohno N, Yokoyama A, Hirasawa Y, Hiwada K, Sakatani M, Ueda E: **KL-6 as a serologic indicator of *Pneumocystis carinii* pneumonia in immunocompromised hosts.** *Intern Med* 1998, **37**(3):307-310.
- Yokoyama A, Kohno N, Kondo K, Ueda S, Hirasawa Y, Watanabe K, Takada Y, Hiwada K: **Comparative evaluation of sialylated carbohydrate antigens, KL-6, CA19-9 and SLX as serum markers for interstitial pneumonia.** *Respirology* 1998, **3**(3):199-202.
- Kohno N: **Serum marker KL-6/MUC1 for the diagnosis and management of interstitial pneumonitis.** *J Med Invest* 1999, **46**(3-4):151-158.
- Ohnishi H, Yokoyama A, Kondo K, Hamada H, Abe M, Nishimura K, Hiwada K, Kohno N: **Comparative study of KL-6, surfactant protein-A, surfactant protein-D, and monocyte chemoattractant protein-1 as serum markers for interstitial lung disease.** *Am J Respir Crit Care Med* 2002, **165**(3):378-381.
- Inoue Y, Barker E, Daniloff E, Kohno N, Hiwada K, Newman LS: **Pulmonary epithelial cell injury and alveolar-capillary permeability in berylliosis.** *Am J Respir Crit Care Med* 1997, **156**:109-115.
- Sato H, Callister ME, Mumby S, Quinlan GJ, Welsh KI, duBois RM, Evans TW: **KL-6 levels are elevated in plasma from patients with acute respiratory distress syndrome.** *Eur Respir J* 2004, **23**:142-145.
- Nathani N, Perkins GD, Tunnicliffe W, Murphy N, Manji M, Thickett DR: **Krebs von Lungen 6 antigen is a marker of alveolar inflammation but not of infection in patients with acute respiratory distress syndrome.** *Crit Care* 2008, **12**(1):R12.
- Ishizaka A, Watanabe M, Yamashita T, Ogawa Y, Koh H, Hasegawa N, Nakamura H, Asano K, Yamaguchi K, Kotani M, Kotani T, Morisaki H, Takeda J, Kobayashi K, Ogawa S: **New bronchoscopic microsample probe to measure the biochemical constituents in epithelial lining fluid of patients with acute respiratory distress syndrome.** *Crit Care Med* 2001, **29**(4):896-898.
- Ohshimo S, Yokoyama A, Hattori N, Ishikawa N, Hirasawa Y, Kohno N: **KL-6, a human MUC1 mucin, promotes proliferation and survival of lung fibroblasts.** *Biochem Biophys Res Commun* 2005, **338**(4):1845-1852.
- Ware LB, Matthay MA: **Alveolar fluid clearance is impaired in the majority of patients with acute lung injury and the acute respiratory distress syndrome.** *Am J Respir Crit Care Med* 2001, **163**(6):1376-1383.
- Kawanami O, Ferrans VJ, Crystal RG: **Structure of alveolar epithelial cells in patients with fibrotic lung disorders.** *Lab Invest* 1982, **46**(1):39-53.
- Fukuda Y, Ferrans VJ, Schoenberger Cl, Rennard SI, Crystal RG: **Patterns of pulmonary structural remodeling after experimental paraquat toxicity. The morphogenesis of intraalveolar fibrosis.** *Am J Pathol* 1985, **118**(3):452-475.
- Brissoulis G, Mavrikiou M, Margeli A, Lazaropoulou C, Natsi L, Papassotiriou I, Hatzis T: **Circulating levels of KL-6 in acute respiratory distress syndrome sepsis or traumatic brain injury in critically ill children.** *Pediatr Pulmonol* 2006, **41**(8):790-795.

doi:10.1186/1465-9921-12-32

**Cite this article as:** Kondo et al.: KL-6 concentration in pulmonary epithelial lining fluid is a useful prognostic indicator in patients with acute respiratory distress syndrome. *Respiratory Research* 2011 **12**:32.