

# Tumour-associated macrophages heterogeneity drives resistance to clinical therapy

Shuangshuang Guo, Xiaojing Chen, Chuhong Guo and Wei Wang

Guangzhou Medical University/The First Affiliated Hospital of Guangzhou Medical University, Guangzhou, 510120, China

## Review

**Cite this article:** Guo S, Chen X, Guo C, Wang W (2022). Tumour-associated macrophages heterogeneity drives resistance to clinical therapy. *Expert Reviews in Molecular Medicine* **24**, e17, 1–13. <https://doi.org/10.1017/erm.2022.8>

Received: 5 December 2021  
Revised: 25 February 2022  
Accepted: 3 March 2022

### Keywords:

Heterogeneity; resistance; therapy; tumour microenvironment; tumour-associated macrophages

### Author for correspondence:

Wei Wang,  
E-mail: [smugowwang@126.com](mailto:smugowwang@126.com)

## Abstract

Tumour-associated macrophages (TAMs) constitute a plastic and heterogeneous cell population of the tumour microenvironment (TME) that can account for up to 50% of solid tumours. TAMs heterogeneous are associated with different cancer types and stages, different stimulation of bioactive molecules and different TME, which are crucial drivers of tumour progression, metastasis and resistance to therapy. In this context, understanding the sources and regulatory mechanisms of TAM heterogeneity and searching for novel therapies targeting TAM subpopulations are essential for future studies. In this review, we discuss emerging evidence highlighting the redefinition of TAM heterogeneity from three different directions: origins, phenotypes and functions. We notably focus on the causes and consequences of TAM heterogeneity which have implications for the evolution of therapeutic strategies that targeted the subpopulations of TAMs.

## Introduction

Tumour microenvironment (TME) refers to the cellular environment in which tumour cells exist. The TME is comprised of blood vessels, various molecules, extracellular matrix (ECM) and different kinds of cells including tumour cells, cancer-associated fibroblasts, tumour-associated macrophages (TAMs) and endothelial cells (Ref. 1). Although there are many different types of immune cells infiltrating the tumour, macrophages are the most abundant inflammatory cells in human cancers such as bowel, breast, stomach, bladder and lung cancers (Refs 2, 3). Substantial clinical and experimental evidence found a close relationship between high infiltration of TAMs and a 'bad' prognosis in colorectal cancer, breast cancer and cervical cancer (Refs 4–7). However, other studies demonstrated that TAMs infiltration was closely related to a 'good' prognosis in ovarian cancer and colorectal cancer (Refs 8, 9). This suggests that the correlations between TAMs infiltration and clinicopathologic feature are unequal in 'different types of TAMs'. For instance, TAMs contain two different subpopulations. The first subset is M1 macrophages, which distinguish tumour cells from normal cells and ultimately kill tumour cells; the second subset is M2 macrophages, which harbour pro-tumour functions (Ref. 10). However, this classification method is not particularly new and has been used for many years. Additionally, the traditional activation models we used in vitro cannot explain the extent of heterogeneity seen in vivo because of the complexity of TME. For instance, high islet/stromal ratio of macrophages in non-small cell lung cancer (NSCLC) means longer disease-free survival (DFS) and overall survival (OS) in patients (median DFS and OS were 20.7 versus 5.5 months and unreached versus 34.8 months for high islet/stromal macrophage ratio versus low ratio, respectively) (Refs 11, 12). Apart from locations, the origins and surface markers (programmed death ligand-1 (PD-L1), tyrosine-protein kinase receptor (TIE2) and chemokine (c-c motif) receptor 2(CCR2)) of TAMs also influence their functions and bring difficulties to clinical therapy.

Although multiple studies pointed out that TAMs promoted the recovery of tumours from clinical therapies by promoting angiogenesis and inhibiting immune response, the underlying mechanism remains to be uncovered until now. In some tumours, chemotherapy resistance is always accompanied by accumulated 'non-sensitive TAMs' including CD45<sup>+</sup>CD11b<sup>+</sup>CD14<sup>+</sup> macrophages, MRC1<sup>+</sup>TIE2<sup>Hi</sup>CXCR4<sup>Hi</sup> macrophages and CD11b<sup>+</sup>Ly6C<sup>+</sup>TIE2<sup>+</sup> macrophages. When targeting these accumulated TAMs after chemotherapy, the tumour regrowth and metastasis are significantly decreased (Refs 13–15). Equally, studies in radiotherapy resistance and immunotherapy resistance confirmed the same result. Together, these findings illustrate different subsets of macrophages in regulating therapy responses and unearth that targeting 'non-sensitive TAMs' is a novel therapeutic strategy to block resistance. Thus, there is an urgent need to study TAMs heterogeneity and search for novel therapies targeting different subpopulations of TAMs.

## Origin and heterogeneity of TAMs

### Origin of TAMs

TAMs have two distinct origins: tissue-resident macrophages (TRMs) and bone-marrow-derived macrophages (BMDMs). TRMs, including Kupffer cells, alveolar macrophages and

© The Author(s), 2022. Published by Cambridge University Press. This is an Open Access article, distributed under the terms of the Creative Commons Attribution-NonCommercial-ShareAlike licence (<http://creativecommons.org/licenses/by-nc-sa/4.0>), which permits non-commercial re-use, distribution, and reproduction in any medium, provided the same Creative Commons licence is used to distribute the re-used or adapted article and the original article is properly cited. The written permission of Cambridge University Press must be obtained prior to any commercial use.

osteoclasts, originate from erythromyeloid progenitors (EMPs) in the yolk sac (C-kit<sup>+</sup>CD41<sup>+</sup>EMPs) or foetal liver (colony-stimulating factor 1 receptor-positive EMPs (CSF-1R<sup>+</sup> EMPs)). After being stimulated by chemokines in tumours, TRMs accumulate in the target organs and mediate tumour immunity via proliferation. Before the establishment of the blood circulation, EMPs expressing C-kit and CD41 emerge in the yolk sac. These early EMPs rapidly give rise to CSF-1R<sup>+</sup> EMPs which could seed in the brain without monocytic intermediates. The CSF-1R<sup>+</sup> EMPs can also seed in the foetal liver and then give rise to foetal monocytes. Foetal monocytes then spread to all tissues after the establishment of blood circulation. It is worth mentioning that TRMs cannot seed in the brain after the establishment of the blood-brain barrier (Refs 16, 17). After birth, haematopoietic stem cells in the bone marrow develop into common myeloid cells and then differentiate into two different monocyte subsets, Ly-6C<sup>+</sup> and Ly-6C<sup>-</sup>. Then, monocytes leave the bone marrow and enter the blood. After being stimulated by chemokines released by the tumour, Ly6C<sup>+</sup>CCR2<sup>+</sup> monocytes traffic into the tumour via the CCL2/CCR2 axis and become mature macrophages named BMDMs (Refs 3, 18, 19) (Fig. 1).

In tumours, CD45<sup>high</sup> macrophages were considered BMDMs, and CD45<sup>low</sup> cells were considered microglia previously. However, a study in brain malignancies pointed out that CD45 only can be employed in murine models and cannot accurately discriminate microglia and BMDMs in patient samples. Thus, extensive flow cytometry panels are needed to distinguish TRMs and BMDMs in both species. Additionally, CX3C chemokine receptor 1 (CX3CR1), commonly used to trace microglia, cannot be used to discriminate microglia and BMDMs in brain tumours as it is also upregulated in BMDMs (Ref. 20). Similarly, TRMs and BMDMs express comparable levels of CX3CR1 in murine pancreatic ductal adenocarcinoma (PDAC) models (Ref. 21). Further studies found that multiple markers, including CXCR4, Itga4 (CD49D), CD11b and CD11a, can be used to distinguish TRMs and BMDMs in tumours (Refs 20, 21).

### Phenotypic heterogeneity of TAMs

After being stimulated by chemokines in the TME, these extremely plastic macrophages polarise into M1 and M2 subtypes (Ref. 22). Lipopolysaccharide (LPS), granulocyte-macrophage colony-stimulating factor, interferon  $\gamma$  (IFN- $\gamma$ ), and activated Toll-like receptors (TLRs) stimulate macrophages to M1 subpopulations. M1 macrophages are considered as anti-tumour macrophages because they contribute to innate host defense and killing tumour cells by producing reactive oxygen/nitrogen species and pro-inflammatory cytokines (e.g., interleukin-1 $\beta$  (IL-1 $\beta$ ), IL-6, IL23 and tumour necrosis factor  $\alpha$  (TNF- $\alpha$ )) (Ref. 23). To identify the M1 subtype from macrophages, markers for the M1 subtype, such as CD80/CD86, iNOS, HLA-DR and pSTAT1, were used in recent studies. On the contrary, Th2 cytokines such as IL-4, IL-10 and IL-13 promoted the macrophages to M2 polarisation, which was considered pro-tumour macrophage because they produced cytokines such as IL-10, IL-13 and transforming growth factor  $\beta$  (TGF- $\beta$ ) to promote tumour development. Similarly, markers for M2 TAMs, such as arginase 1 (Arg1), CD206, CD204 and CD163, were used to identify M2 subtypes. M2 macrophages can be further subdivided into M2a, M2b, M2c and M2d subpopulations depending on the function and cell surface markers they display *in vitro*. M2a macrophages are stimulated by IL-4 and IL-13. In addition to expressing high levels of the decoy IL-1 receptor (IL-1R), mannose receptor (MR or CD206) and CCL17, M2a macrophages also secrete insulin-like growth factor (IGF), fibronectin and TGF- $\beta$ . Another subpopulation, M2b macrophages are stimulated by IL-1R agonists or TLR ligands

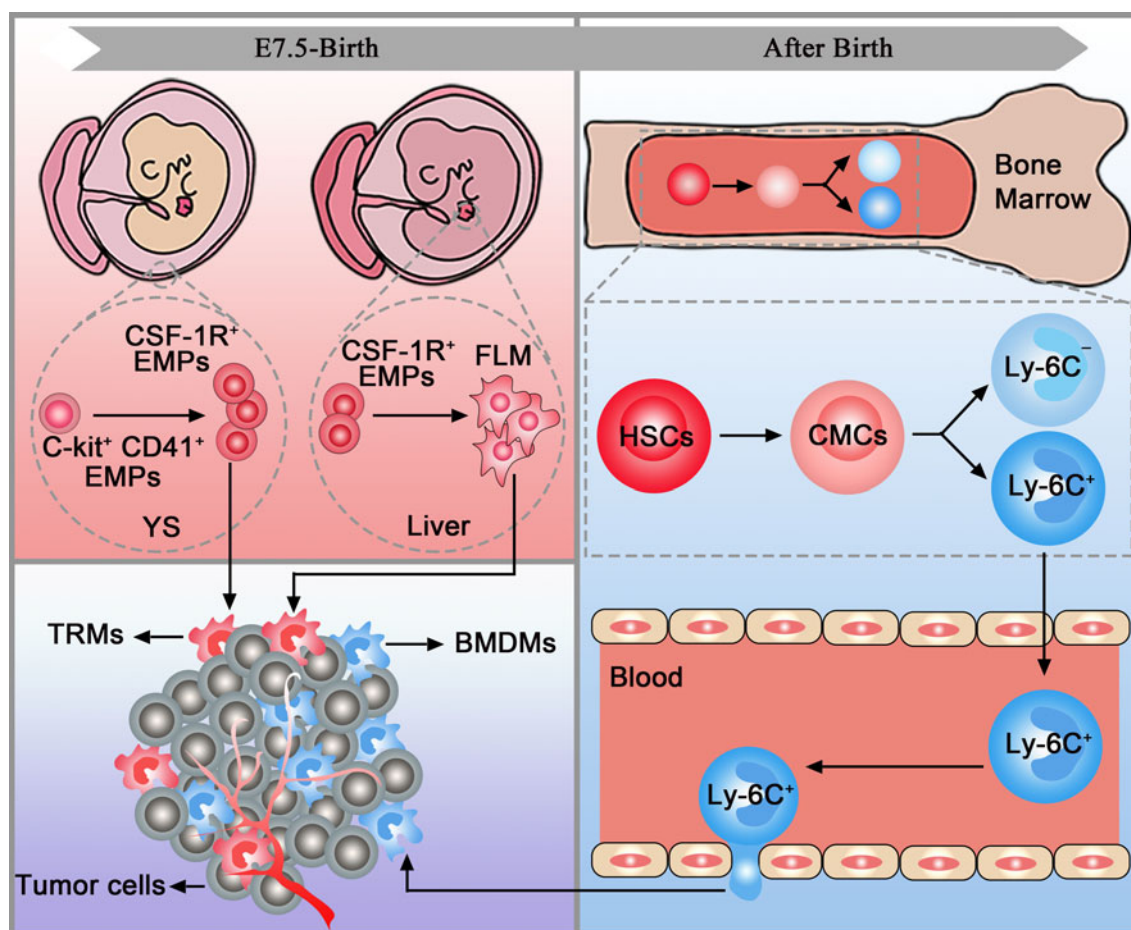
and express high levels of TNF superfamily member 14 (TNFSF14) and CCL1. After being stimulated by IL-10, glucocorticoids or TGF- $\beta$ , M2c macrophages secrete a high level of IL-10 and then participate in anti-inflammatory activities. M2d macrophages, closely interacted with tumour angiogenesis and progression, are induced by TLR agonists (Ref. 24). However, little progress has been made on the characterisation of macrophages *in vivo*. *In vitro* assay allows easy control of the extracellular environment and can be used for the analysis of macrophage polarisation. Conversely, *in vivo* conditions contain a variety of cytokines secreted by other immune cells and could affect the outcome of macrophage polarisation, making classification difficult. Until now, TAMs only can be classified into M1 macrophages and M2 macrophages *in vivo*. Recently, Nikovics *et al.* identified M2d-like macrophages in the minipig model by *in situ* hybridisation, providing more possibility that the M2 classification system can be also used *in vivo* (Ref. 25).

Both M1 and M2 macrophages are highly plastic and thus can evolve into each other after TME changes or therapeutic interventions. In the early stage of the tumour, M1 TAMs account for a relatively high proportion, while the proportion of M2 TAMs is higher in advanced tumours (Ref. 26). During tumour progression, monocytes secrete CXCL12 into the TME and then promote the transition from M1 to M2 macrophages (Ref. 27). In contrast, blocking polarisation factors, such as PI3K- $\gamma$  pathway, CD40, STAT3, STAT6, CSF-1/CSF-1R, result in a switch from M2 to M1 macrophages, providing a target for clinical therapy (Refs 28–30). Recently, a group achieved TAMs-specific delivery and M2 to M1 transition through liposome, providing more possibility for future therapy (Ref. 31). Interestingly, TAMs from murine fibrosarcoma not only express a high level of M2 phenotype, but also express proinflammatory Th1 chemokines like CCL5, CXCL9 and CXCL10, indicating the presence of a ‘mixed’ macrophage phenotype in tumours (Ref. 32). As expected, single-cell RNA sequencing of NSCLC did not find any macrophages only exhibiting the M1 phenotype (Ref. 33). Therefore, simply classifying macrophages into M1 and M2 cannot cover all types of TAMs.

Apart from the conventional binary model, which classified macrophages into M1 and M2 subtypes, a single cell atlas in breast cancer demonstrated that the heterogeneously PD-L1<sup>+</sup> TAMs can be classified into seven different clusters: M01 (CD38, CD163, CD169, CD204, CD206), M02 (CD169, CD204), M04, M14, M17 (CD38, CD169), CD64<sup>high</sup>HLA-DR<sup>high</sup>. This classification model is closely related to clinical therapy as ER<sup>-</sup> (oestrogen receptor-negative) tumours contained more M01 and M17 TAMs than ER<sup>+</sup> tumours. In addition, grade 3 tumours contain fewer M04 TAMs than lower-grade tumours (Ref. 34). In addition, Arlauckas *et al.* proved the existence of elongated Arg1A<sup>+</sup> macrophages and rounded Arg1B<sup>+</sup> macrophages in the tumour and found that these macrophages were located in the tumour periphery and tumour centre respectively (Ref. 35). Among the human TAMs subset in NSCLC, they divided TAMs into 10 different groups expressing distinct chemokines (G1 expressing CXCL5; G8 expressing CXCL12; G9 expressing CXCL9, CXCL10 and CXCL11) (Ref. 33). With different TAMs subsets and labelling markers defined here, we can test the correlation of different subgroups to tumour progression and provide new targets for clinical therapy in the future.

### Diversity of TAMs function

According to the previous studies, we can classify TAMs into the following six types: anti-tumour macrophages, immunosuppressive macrophages, invasive macrophages, metastasis-associated macrophages, angiogenic macrophages and lymphangiogenic macrophages (Ref. 36).



**Fig. 1.** TAM origins. Tissue-resident macrophages (pink box) and bone marrow-derived macrophages (blue box) are accumulated in the tumour (purple box). YC, yolk sac; FLM, foetal liver monocytes; EMPs, erythromyeloid progenitors; HSCs, haematopoietic stem cells; CMCs, common myeloid cells; TRMs, tissue-resident macrophages; BMDMs, bone marrow-derived macrophages.

M1-macrophages, also named anti-tumour macrophages, can identify tumour cells from normal cells and ultimately kill tumour cells through two different mechanisms. In the first mechanism, M1-macrophages secrete tumour-killing molecules such as ROS and NO, killing tumour cells directly through cytotoxic effects (Ref. 37). The other mechanism is antibody-dependent cell-mediated cytotoxicity killing tumour cells. Recently, a study pointed out that M1-derived exosomes exerted a proinflammatory role and suppressed angiogenesis in myocardial infarction, revealing that M1 macrophages may inhibit tumours by molecules carried by exosomes (Ref. 38). Further studies proved that M1-derived exosomes act as the carrier to deliver paclitaxel (PTX) and cisplatin (DDP) into the tumour tissues, enhancing the anti-tumour effects in the mice model (Refs 39, 40). Thus, M1-derived exosomes may be an effective approach to treat cancer cells in the future. Interestingly, increasing evidence revealed that M1 macrophages also promoted tumour development. During tumour initiation, TAMs create an inflammatory environment that is mutagenic and promotes growth. In 1863, Rudolf Virchow noted leucocytes in neoplastic tissues and made a connection between chronic inflammation and cancer. Over the past few decades, multiple studies demonstrated that cancer is associated with infection (viral hepatitis B, viral hepatitis C, *Helicobacter pylori*) and inflammation is widely involved in the process of carcinogenesis as the primary mediator (Ref. 41). As a matter of course, infection treatment (i.e., *H. pylori* in gastric cancer) and various anti-inflammatory therapies (i.e., COX-2 inhibitors) can successfully prevent cancer progression (Refs 42, 43). During chronic inflammation, a mutagenic and growth-

promoting environment was created in the subepithelial stroma, which was infiltrated by various inflammatory cells and activated macrophages account for the majority of the immune cells. Then, these activated macrophages generated ROS and NO intermediates which induced DNA damage in proliferating cells and the surrounding epithelial cells, supporting tumour initiation and neoplastic transformation (Ref. 44). Moreover, M1 macrophages potentially induced epithelial-mesenchymal-transition (EMT) in benign and malignant PDAC cell lines (Ref. 45). Besides, a recent study showed that supernatant from the M1 macrophage culture contained cytokine IL-1 $\beta$  which controls PD-L1 expression in hepatocellular carcinoma cells (Ref. 46). The macrophages used in these studies were cell lines or murine BMDMs which were different from M1 TAMs. Without considering this defect, we speculate that there exist 'mixed' TAMs in tumours because polarisation is driven by various environmental factors.

TAMs downregulate the activation of other immune cells and suppress the immune response by secreting various cytokines (vascular endothelial growth factor (VEGF), IL-4, IL-10 and TGF- $\beta$ ), chemokines (CCL2, CCL18 and CCL22) and enzymes (COX-2, ARG1 and matrix metalloproteases (MMPs)). TAMs suppress immune response through two different mechanisms: (1) inhibiting the function of CD8 $^{+}$  and CD4 $^{+}$  T cells; (2) promoting the function of the induced regulatory T cells (i-Tregs) and natural Tregs cells (n-Tregs). For instance, TAMs-derived IL10 and TGF- $\beta$  promoted the production of i-Treg in the intestinal (Ref. 47). In turn, Tregs in tumours promoted the polarisation of M2 macrophages (Ref. 48). M2 macrophages expressed proteins, such as epithelial growth ligands of the factor, CSF-1, cat



eye syndrome critical region protein 1, are shown to stimulate the migration of glioma cells (Refs 49–51). Macrophage-derived exosomes, which were considered to be a key factor in mediating the communication between tumour cells and microenvironment cells, can also promote the migration of tumour cells as it carries multiple microRNAs and proteins, such as miR-21-5p, miR-155-5p and ApoE protein (Refs 52, 53). Besides, TAMs possess the ability to promote EMT by activating the COX-2/STAT3 axis (Ref. 54). During EMT, the interaction between cell-cell and cell-ECM are reshaped, resulting in the separation of epithelial cells from each other and the underlying basement membrane, in other words, increasing the migration capacity of tumour cells (Ref. 55). Apart from moving tumour cells, a destroyed basement membrane is a requirement for tumour metastasis. M2 macrophages can destroy endothelial cell basement membrane by secreting matrix serine proteases, MMPs, cathepsins, etc., and decompose various collagen and other components of ECM, thereby increasing the migration of tumour cells (Refs 56, 57).

The formation of new blood vessels is essential to provide nutrients and oxygen to malignant cells. In animal models of prostate cancer, breast cancer and cervical cancer, TAMs promoted tumour angiogenesis in a VEGF-dependent manner (Refs 58–61). The expression of the two transcription factors, hypoxia-inducible factor-1 $\alpha$  (HIF-1 $\alpha$ ) and HIF-2 $\alpha$ , within hypoxia TAMs is the key to VEGF production, and knockout of these proteins in TAMs attenuates pro-angiogenic responses (Refs 62, 63). Further study revealed that HIF-1 $\alpha$  induced recruitment of CD45+ myeloid cells containing TIE2+ subgroups (Ref. 64), and knockdown of TIE2-expressing macrophages in mice suppressed angiogenesis by reducing VEGF and autophagy, indicating a HIF-1 $\alpha$ /TIE2/VEGF pathway in angiogenesis (Ref. 65). Tumour-released CSF-1 (M-CSF) also regulated VEGF-A expression through NF- $\kappa$  B and CCL2, promoting pro-angiogenic functions of macrophages (Ref. 66). Another cytokine, MMPs, can be released by TAMs and contributes to the release of bioactive VEGF-A from its ECM-bound form (Ref. 67). Then, bioactive VEGF stimulates the vascular permeability of blood vessels and increases the extravasation of plasma proteins, thereby providing a scaffold for the migration of activated endothelial cells. Considering the central role of VEGF in angiogenesis, the combination of docetaxel and ramucirumab, inhibitors of the VEGF/VEGFR2 pathway, is applied for second-line therapy in NSCLC (Refs 68, 69). Although the progression-free survival and OS improved after treatment, the median survival (MS) of the NSCLC patients is shorter than 18 months. These results indicate that VEGF-independent angiogenic factors also promote angiogenesis. Indeed, TAMs release a panel of VEGF-independent angiogenic factors, including semaphorin 4D and urokinase-type plasminogen activator (Refs 70, 71). Recently, a study about PDAC found that M2 macrophage-derived exosomes which carry a higher level of miR-155-5p and miR-221-5p than M0 macrophages-derived exosomes increased the vascular density of mice (Ref. 72).

Lymphangiogenesis is essential for tumour cells lymph node metastasis. TAMs can utilise two main mechanisms to stimulate lymphangiogenesis. Firstly, malleable TAMs promote lymphangiogenesis by trans-differentiation into lymphatic endothelial cells. It was reported that LYVE-1+ TAM integrated into tumour-associated lymphatic endothelium in mouse models of pancreatic insulinoma and prostate cancer (Ref. 73). Secondly, TAMs directly secrete pro-lymphangiogenic factors. For instance, M2 TAMs can induce the development of lymphatic vessels in the tumour by secreting pro-angiogenesis factors, such as VEGF and MMP9 (Ref. 74). Podoplanin positive (PDPN+) TAMs also promoted lymphangiogenesis and lymphoinvasion in cancer (Ref. 75). Recently, a study pointed out that TRMs were closely

related to lymphatic vessel growth and expansion in the heart. Even without using tumour models, this finding reveals the relationship between a subpopulation of macrophages and lymphangiogenesis and provides insight into our future study (Ref. 76).

## Cause of TAMs heterogeneity

### Multiple tumours

What are the factors that cause the heterogeneity of TAMs? Firstly, the functional heterogeneity could be determined by the sources of TAMs. For example, Loyher *et al.* demonstrated that TRMs were associated with tumour cell growth in lung cancer, while CCR2-dependent recruited macrophages accelerated tumour progression in the form of metastasis (Ref. 77). In murine PDAC models, a recent study showed that embryonically derived TAMs exhibited pro-tumoural function whereas their bone marrow macrophage counterparts mainly contributed to antigen presentation, suggesting the importance of origins (Ref. 21). Moreover, CD163+ Tim4+ macrophages in the omentum which originated from embryos promote the development and metastasis of ovarian cancer (Ref. 78). Moreover, the proportion of TRMs and BMDMs in tumours varies in different tissues and organs respectively. Franklin *et al.* found that CCR2+ monocytes accounted for approximately 40% of all CD45+ cells whereas only 10% of cells derived from TRMs in breast cancer (Ref. 79). Conversely, TAMs are mostly derived from TRMs in retinoblastoma, neuroblastoma and osteosarcoma (Ref. 80). These observations provoke a question: whether TAMs from different sources, such as TRMs (generally express CD11b and MERTK) and BMDMs can be individually targeted (Refs 20, 81)? As expected, MERTK inhibition combined with radiotherapy showed a significant growth delay than radiotherapy alone in mouse glioblastoma which mainly contains TRMs (Ref. 82). Specific depletion of CD163+ Tim4+ macrophages also prevents metastasis of ovarian cancer. In addition, inhibition of BMDMs delays the glioblastoma recurrence after radiotherapy because the abundance of BMDMs increased after radiotherapy (Ref. 83). However, some BMDMs probably convert into TRMs during growth, meaning the conversion of functions and also bring difficulties for targeted therapy based on TAM origins (Ref. 84).

Secondly, macrophage subpopulations are not uniformly distributed along the tumour. In stage II colorectal tumours, macrophages carrying CD163 are predominantly located in the tumour invasive front (IF) whereas macrophages carrying CD80 are mainly found within the tumour-adjacent normal mucosa (Ref. 85). Another study in colorectal tumours found a higher level of CD163+/CD68+ ratio in tumour IF than that in tumour centre. Additionally, a higher level of CD163+/CD68+ ratio in tumour IF was closely associated with enhanced LVI, TI and TNM stage (Ref. 86). In breast cancer, the distribution of CD86+ and CD163+ within tumour nest (TN) and tumour stroma (TS) is also different. In the same study, they revealed that high density of CD163+ TAM within TS was closely correlated with poor prognostic parameters, whereas there was no association with CD163+ TAMs density and clinicopathologic characteristics in TN (Ref. 87).

Third, the distribution of macrophages varies in different tumours. In breast tumours, the high infiltration of CD68+ TAMs in TN and TS is correlated with large tumours. However, another study in colorectal cancer found that low infiltration of CD68+ TAMs in IF and TS was associated with more advanced cancer (Refs 88, 89). Considering that the CD68+ marker is used to define the total amount of TAMs, the CD68+ TAMs might represent different subpopulations in different tumours. Additionally, distinct structures and molecular compositions

between tissues might regulate local immunity and influence the antitumour immune response across tumour sites (Ref. 90). For example, the densities of the lymphoid structures (TLSs) which differ between tumours reflect lymphocyte-infiltration levels (Ref. 91).

### Multiple stimulations of bioactive molecules

#### LPS/IFN- $\gamma$ polarisation pathway

IFN- $\gamma$  and LPS are classical stimuli for M1 macrophages. During M1 polarisation, IFN- $\gamma$  and LPS can bind to receptors at the membrane and subsequently activate the downstream molecules. TLRs regulate the polarisation of macrophages through MyD88-dependent and MyD88-independent pathways. In the MyD88-dependent pathway, TLRs signal activates the NF- $\kappa$ B through the adaptor protein MyD88 and  $\kappa$ B kinase (IKK) complex which consists of IKK $\alpha$  and IKK $\beta$ , and IKK $\gamma$  (or NEMO). As a result, NF- $\kappa$ B (p65/p50 complex) can be released from cytoplasmic NF- $\kappa$ B/I- $\kappa$ B complex and rapidly translocate in nuclear and bind to target genes such as TNF $\alpha$  and IL-1. Moreover, MyD88 also activates the transcription factor, AP-1, by triggering the activation of MAPK (Fig. 2a). In the MyD88-independent pathway, macrophages polarisation is regulated via TLRs-TRIF-IKKi/TBK1-IRF3 pathway. After being stimulated by TLRs, TIR-domain-containing adapter inducing interferon- $\beta$  (TRIF) induces the activation of IKKi and TBK1 and then regulates the interferon-regulatory factor 3 (IRF3) (Fig. 2b). Another polarisation factor, IFN- $\gamma$ , binds to its cognate receptor (IFNAR1/2) and regulates macrophages polarisation through the IFNAR1/2-Jak-STAT1 pathway (Ref. 92) (Fig. 2c). The Notch pathway is also involved in M1 polarisation. In 2010, Wang *et al.* provided new insight into the molecular mechanism of macrophages polarisation and found that compromised Notch pathway activation led to the M2-like TAMs (Ref. 93). Research in the past 10 years demonstrated that Notch activation promotes M1 polarisation through the Notch1-NF- $\kappa$ B axis pathway (Refs 94, 95).

These pathways can be regulated by multiple molecules. For example, PGRN and TET1 inhibit M1 polarisation by down-regulating the MyD88-dependent pathway (Refs 96, 97) (Fig. 2a), and RNA-binding motif 4 regulates M1 polarisation through targeting STAT1 (Ref. 98) (Fig. 2c). Additionally, multiple studies indicated that epigenetic regulation factors also modulated macrophage polarisation. For instance, N<sup>6</sup>-methyladenosine-forming enzyme METTL3 regulates STAT1 mRNA and protein expression through methylation, changing macrophages polarisation (Ref. 99). Other methylation enzymes, DNA-methyltransferase-3 $\beta$  and histone deacetylase-3, can also regulate macrophages polarisation (Refs 100, 101).

#### IL4/IL13/IL10 polarisation pathway

IL-4 and IL-13 are overexpressed in human and murine cancer and have been shown to play critical roles in modulating the immune system for tumour growth. Similarly, IL-4R and IL-13R are also highly expressed in various tumours. IL-4R and IL-13R share two chains and initiate signal transduction (Ref. 102). In the first chain, IL-4 binds to a complex composed of IL-4R $\alpha$  and common cytokine receptor  $\gamma$ -chain. In the second chain, IL-4R $\alpha$  and IL-13R $\alpha$ 1 form a receptor complex that can bind to both IL4 and IL13 (Ref. 102). Then, the receptors regulate the polarisation of macrophages through two different pathways. In the first pathway (IL4/IL13-Jak-STAT6 pathway), the receptors activate the transcription factor STAT6, resulting in the translocation of pSTAT6 to the nuclei (Ref. 103). Besides, the peroxisome proliferator-activated receptor, IRF4 and Krüppel-like factor 4 (KLF4) can cooperate with STAT6, activating M2-type genes such as *Arg1*, *IL10* and *Mrc1* (Refs 104–106) (Fig. 2d). Both in

vitro and in vivo assays have demonstrated that inhibition of the JAK/STAT pathway in TAMs is critical to attenuate tumour growth and metastasis (Refs 103, 107). In the second pathway (IL4-AKT-P18-mTOR-LXR pathway), AKT will be activated by PI3K when the macrophages are treated with IL-4. Then, P18 interacts with amino acid-activated mTORC1 and activates LXR which will promote M2 gene expression (Ref. 108) (Fig. 2e). On the membrane surfaces, M2 macrophages-derived IL10 binds to the IL10R which recruits cytoplasmic protein JAK to the surface. Then, STAT3 is phosphorylated by JAK and translocates to the nucleus, facilitating transcriptional regulation of target genes such as VEGF-A. Additionally, a novel mechanism of M2 polarisation, the IL-6/STAT3 signalling pathway, is found in hepatocellular carcinoma (Ref. 109) (Fig. 2f).

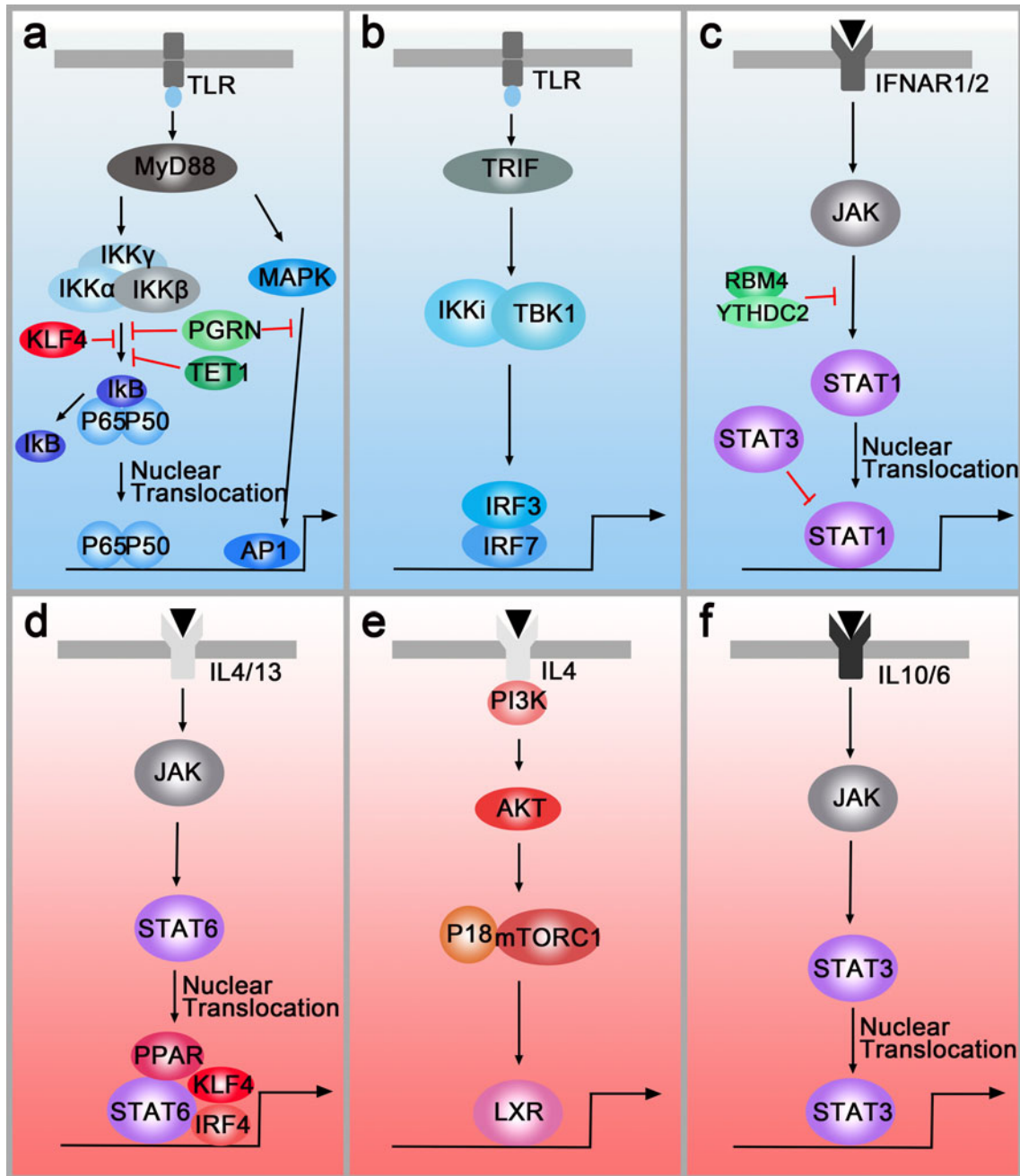
Interestingly, the M1 and M2 polarisation pathways can also be regulated by each other. In microglia, IRF-3 (involved in the M1 polarisation pathway) is shown to activate PI3K/AKT signalling (M2 polarisation pathway), suggesting that IRF-3 promotes switching from monocytes to M2 macrophages (Ref. 110). In natural killer cells and macrophages, ablating of STAT3 upregulates STAT1 expression and increases anti-tumour immune responses, demonstrating the ability of STAT3 to antagonise STAT1 (Ref. 111). Apart from cooperating with STAT6 to induce M2 polarisation, KLF4 inhibits M1 targets via sequestration of coactivators required for NF- $\kappa$ B activation (Ref. 112) (Fig. 2a). However, there is no paper studying the preference of polarisation pathways until now. For this reason, we choose to add the urgent need for studying the preference of polarisation pathways in different tumours.

#### Transcription regulation of macrophages polarisation by RNAs

Recent studies have also demonstrated that microRNAs, a group of small non-coding RNAs, control macrophage polarisation by binding to the 3' untranslated region of mRNAs to target them for translational repression or degradation. For example, miR21 and miR155 promote M1 polarisation by regulating the JAK/STAT1 pathway whereas miR222-3p promoted M2 polarisation through the JAK/STAT3 pathway. Some microRNAs, such as miR125 and miR26a, suppress M2 polarisation through directly interacting with transcription factors IRF4 and KLF4, respectively (Ref. 113). Long non-coding RNA also modulates macrophages polarisation in tumours (Refs 114, 115). Additionally, exosomes can play an important role in macrophages polarisation when it is carrying these regulation RNAs (Ref. 116). Although we have a little understanding of the polarisation pathways right now, the organ is complicated and regulated by various factors inside and outside the body and one pathway is not enough to understand macrophages polarisation. Therefore, an in-depth understanding of polarisation pathways and their regulatory relationships is essential for later study. If the central regulator of macrophages polarisation can be found, it will be a huge guiding role in clinical treatment.

#### Multiple metabolisms

Hypoxia results in the generation of ROS, which subsequently oxidise proteins and cause DNA damage, causing genomic instability and then accelerating malignant progression. In recent years, numerous studies have demonstrated that hypoxia promoted increased M2 macrophage in TME. On the one hand, high concentrations of chemokines secreted from hypoxic tissues such as HIF-1, HIF-2, ZEB1 and endothelin-2 attract macrophages into the tumour (Ref. 117). Once macrophages arrived in these hypoxic regions, they accumulate in hypoxia tissues by two plausible mechanisms (a) cytokine gradient attracts macrophages and (b) the mobility of macrophages within these areas



**Fig. 2.** M1 polarisation pathways (blue box) and M2 polarisation pathways (pink box). (a) Left panel: TLR-MyD88-IKK-NF- $\kappa$ B pathway. Right panel: TLR-MyD88-MAPK-AP1 pathway. PGRN, TET1, RBM4 inhibit M1 polarisation by down-regulating the MyD88-dependent pathway. (b) TLRs-TRIF-IKKi/TBK1-IRF3/IRF7 pathway. (c) IFNAR1/2-Jak-STAT1 pathway. RBM4/YTHDC2 and STAT3 regulate M1 polarisation by targeting the STAT1. (d) IL4/IL13-Jak-Stat6 pathway. PPAR, IRF4 and KLF4 can cooperate with STAT6 and activate M2-type genes. (e) IL4-AKT-P18/mTORC1-LXR pathway. (f) IL-6/IL10-JAK-STAT3 pathway.

is disturbed (Ref. 118). On the other hand, tumour hypoxia promotes the polarisation of M2 macrophages. As a byproduct of hypoxic glycolysis, tumour-derived lactic acid has a critical function in M2 macrophages polarisation in a HIF1 $\alpha$ -dependent manner (Ref. 119). Oncostatin M, eotaxin and neuropilin-1 have also been shown to promote M2 polarisation (Refs 120, 121). Furthermore, both in vitro and in vivo assay found that hypoxia-induced exosomes have a potent ability to promote M2-like polarisation as it carries immunomodulatory proteins and chemokines including FTH, FTL, CCL2, TGF- $\beta$  and CSF-1 (Ref. 122). Macrophages preferentially accumulate in hypoxia tumour areas once they are polarised to M2 which can 'support' the tumour in overcoming the hypoxic environment and thus maintain its progression (Ref. 123). Interestingly, a recent study demonstrated that hypoxic TAMs were more proximal to the

lymphatic vessels than normoxic TAMs, suggesting that these hypoxic TAMs might promote cancer progression and metastasis (Ref. 124). Although MHC-II<sup>o</sup> M2 and MHC-II<sup>hi</sup> M1 are located in strong hypoxia and less hypoxic areas, respectively, hypoxia does not affect macrophages' differentiation and polarisation as the relative abundance and expression markers of TAMs did not change in the hypoxia changing area (Ref. 125). Thus, the phenotypic switches in TAMs are dependent on cytokine availability in conjunction with microenvironmental cues such as hypoxia which is a common feature in many pathophysiological settings. In mice subcutaneous tumours and human NSCLC, on the opposite, TAMs enhance tumour aerobic glycolysis and hypoxia, complicating tumour response to anticancer therapies (Ref. 126).

Another factor, iron homeostasis, also influences macrophages polarisation. In RAW264.7 cells, they discovered high levels of



iron storage (ferritin) in M1 macrophages (Ref. 127). When exploring the relevance of iron homeostasis and macrophages polarisation in patients, a study in 102 human NSCLC found a survival advantage in patients with accumulating iron compared to iron-negative patients (Ref. 128). Additionally, iron-positive tumour tissues showed a higher infiltration of M1 TAMs which may contribute to the positive effect on the OS of NSCLC patients. Similarly, a study found that hepatocellular carcinoma cells upregulated the expression of M2-related genes by competing with macrophages for iron (Ref. 129). Then, declined iron promoted M2 TAMs polarisation in a prolyl hydroxylase domain (PHD)-dependent manner. Ferrous iron is essential for PHD hydroxylase activity which controls HIF-1 $\alpha$  degradation in a post-transcriptional manner. Thus, iron chelated melanin-like nanoparticles limited malignant metastasis and tumour growth by enhancing M2-to-M1 repolarisation (Ref. 130). However, a study in cell lines illustrated that chronic iron overload promoted M2 polarisation. And a meta-analysis revealed a positive relationship between haeme iron intake and breast cancer risk (Ref. 131). Here, we conclude two possible explanations for these converse results. On the one hand, macrophages, in cell lines, take iron via endocytosis, but no haeme metabolism, whereas macrophages in vivo predominantly take up iron by haeme metabolism. On the other hand, there is a balance between iron homeostasis and tumours. Both lacking and overload of iron are negative to patients.

Recently, a study about manganese (Mn<sup>2+</sup>) found that Mn-deprived mice had significantly promoted tumour growth and metastasis and Mn<sup>2+</sup> treatment significantly reduced tumour burdens in mice (Ref. 132). As expected, Mn<sup>2+</sup> treatment promotes M1 TAM polarisation and promotes macrophages to produce huge amounts of type I IFNs (Ref. 133). More importantly, a combination treatment of anti-PD-1 antibody and Mn<sup>2+</sup> in patients with advanced metastatic solid tumours shows promising consequents. This work broadens the repertoire of anti-cancer therapy and guides exploring the relationship between Mn<sup>2+</sup> and macrophages.

## Consequences of TAMs heterogeneity

### Chemotherapy resistance

Reciprocal interactions between cancer cells and immune cells in the TME not only support tumour development and progression but can also contribute to resistance to anticancer targeted therapies (Ref. 134). Initially in mouse models, CSF1 inhibition was able to reverse chemoresistance (CMF: cyclophosphamide, methotrexate, 5-fluorouracil; cycled twice i.p.) of breast cancer (Ref. 135). Subsequently, DeNardo *et al.* found a higher percentage of infiltrated CD45<sup>+</sup>CD11b<sup>+</sup>CD14<sup>+</sup> macrophages in breast cancer biopsy samples from patients who were treated with neoadjuvant chemotherapy than those who received surgery alone. In the same study, mammary epithelial cells produced monocyte/macrophage recruitment factors, including CSF1 and IL-34, after chemotherapy. Blockade of macrophage recruitment with anti-CSF1R antibodies, in combination with paclitaxel, improved chemosensitivity and resulted in reduced primary tumour development (Ref. 14). Additionally, MRC1<sup>+</sup> TIE2<sup>Hi</sup> CXCR4<sup>Hi</sup> macrophages are accumulated around blood vessels in breast tumours after chemotherapy (Doxorubicin), and these accumulated macrophages are thought to promote tumour revascularisation and relapse via the VEGF-A pathway. When targeting this accumulated TAMs population around blood vessels by blocking CXCR4 after chemotherapy, the tumour revascularisation and regrowth were significantly decreased, suggesting that this targeting strategy is of clinical utility (Ref. 15). Another study found abundant CD11b<sup>+</sup> Ly6C<sup>+</sup> macrophages infiltrated in tumours after chemotherapy. These CD11b<sup>+</sup> Ly6C<sup>+</sup>

macrophages also highly expressed TIE2 which prevented macrophages from apoptosis under stress via the AKT-dependent pathway (Ref. 13). Additionally, Shree *et al.* also found increased macrophage infiltration following paclitaxel (Taxol) chemotherapy in the mammary tumour. They demonstrated that cathepsin secreted by macrophages interacted with cathepsin inhibition in vivo and prevented Taxol-induced tumour cell death (Ref. 136). In addition, TAM-derived CCL2 activated the PI3K/AKT/mTOR signalling pathway in breast cancer cells and then increased endocrine resistance (Ref. 137). Other cytokines, such as IL6, IL10 and IL34, were reported to mediate chemotherapy resistance in many tumours by inducing anti-apoptotic programs (Refs 138–140). Recently, a study found that macrophages-derived YKL-39 which stimulated angiogenesis elevated in mammary patients who undergo neoadjuvant chemotherapy. Thus, anti-angiogenic therapy combined with neoadjuvant chemotherapy provides a new orientation for reducing chemoresistance and inhibiting metastasis in breast cancer patients (Ref. 141) (Fig. 2 blue box).

Although both TRMs and BMDMs are depleted after chemotherapy, only BMDMs recover rapidly and undergo phagocytosis-mediated tumour clearance. As TAMs have been shown to express VEGFR1, Loyher *et al.* speculated that anti-VEGF combined with chemotherapy could target recovered BMDMs and improve therapeutic outcomes. As expected, combined therapy inhibits both TRMs and BMDMs reconstitution through blocking TAM's differentiation and/or survival (Ref. 77). Treatment with cisplatin or carboplatin increases the proportion of M2 macrophages through IL-6 and prostaglandin E2 in ovarian cancer cell lines (Ref. 142). In the end, M2 macrophages, in turn, promote the chemoresistance of cancer cells in positive feedback. At the transcription level, M2 macrophages upregulate the expression of drug resistance genes, ABCG2, in ovarian cancer cell lines (Ref. 143).

### Radiotherapy resistance

Consistent with chemotherapy, radiotherapy will increase the expression of monocyte/macrophage recruitment factors, including CSF1, CCL2 and IL-34 (Refs 3, 144). When combining radiotherapy with CSF-1R inhibitors for tumour therapy, the MS of mice was significantly prolonged than radiotherapy alone. In further studies, they found that CSF-1R inhibitors prevented radiotherapy-recruited monocyte cells from differentiating into M2 TAMs and increased M1 phenotype genes, especially IL-6 and nitric oxide synthase 2 (Ref. 144). Similarly, when co-culturing the inflammatory breast cancer with macrophages, the M1 macrophages mediated radiosensitivity of inflammatory breast cancer cells whereas M2 macrophages mediated radiation resistance. To further clarify the underlying cause of M2 macrophages-mediated radiation resistance, they analysed the inflammatory breast cancer cells using a kinase antibody assay and revealed that only co-culture with M2 macrophages can these tumour cells elevate kinase C zeta (PRKCZ) level, leading to radiation resistance in radiotherapy (Ref. 145). Another study also demonstrated that SEPT9 which mediated M2 macrophages polarisation increases irradiation resistance by interacting with the HMGB1-RB axis (Ref. 146) (Fig. 2 green box). However, the irradiation dose can influence the infiltration subpopulation of TAMs. Low doses (below 1 Gy) and high dose (>10 Gy) evoke low toxicity and favour the M2 phenotype of TAMs whereas intermediate dose (1–10 Gy) induces a shift of unpolarised macrophages toward the M1 phenotype (Ref. 147). Therefore, it is important to choose an appropriate dose to minimise the resistance to radiotherapy while eliminating tumours.

When it comes to origins, Akkari *et al.* demonstrated that the ratio of TRMs and tumour-infiltrating BMDMs was altered

**Table 1.** Immunotherapy associated with macrophages

Strategies	Target	Agent	Tumour	NCT	Start date
Inhibiting recruitment of monocytes	CCL2-CCR2 inhibitor	CCR2/5 dual antagonist: GVAX	Pancreatic ductal adenocarcinoma	NCT03767582	2019
	CSF1/CSF1R inhibitor	CSF-1R inhibitor: pexidartinib	Tenosynovial giant cell tumour	NCT04703322	2021
		CSF-1R inhibitor: DCC-3014	Advanced malignant neoplasm	NCT03069469	2017
Blocking pro-tumour functions	VEGF/VEGFR inhibitor	VEGFR2 inhibitor: apatinib	Sarcoma	NCT04072042	2019
Promoting phagocytosis of TAMs	CD47-SIRP $\alpha$ inhibitor	CD47 inhibitor: AK117	Acute myeloid leukaemia	NCT04980885	2021
		CD47 inhibitor: STI-6643	Solid tumour/relapsed solid neoplasm	NCT04900519	2021
Reprogramming TAMs into an immunostimulatory phenotype	CD40 agonists	SEA-CD40	Melanoma/carcinoma/NSCLC	NCT04993677	2021
	PI3K $\gamma$ inhibitor	IPI-549	Head and neck squamous cell carcinoma	NCT03795610	2020
	TLR4/7/8/9 agonists	TLR4 agonist: GSK1795091	Cancer	NCT02798978	2017
		TLR7/8 agonist	Advanced solid tumour	NCT04799054	2021
TLR9 agonist: CMP-001	Melanoma	NCT04401995	2020		
Inhibiting immune checkpoint proteins	PD-L1 inhibitor	PD-L1 inhibitor treatment	Advanced solid tumours	NCT04157985	2019
	CTLA4 inhibitor	BMS-986218	Advanced carcinoma	NCT04785287	2021

Data were obtained from <http://clinicaltrials.gov>.

during radiotherapy response and recurrence. In radiotherapy-recurrence gliomas, BMDMs were increased compared to untreated controls, constituting  $\geq 50\%$  of total TAMs, and inhibition of BMDMs infiltration delays glioma recurrence after radiotherapy. When blocking both TRMs and BMDMs using BLZ945, a blood-brain barrier-permeable CSF-1R tyrosine kinase inhibitor to specifically target these TAM populations together, tumour regression was associated with increased apoptosis and decreased glioma cell proliferation in the combination treatment group compared to each monotherapy (Ref. 83). This study reveals that both TRMs and BMDMs limit the efficacy of radiotherapy and support glioma recurrence after radiotherapy. However, other studies hold the view that TRMs display radiation resistance whereas BMDMs did not resist irradiation. Although both subsets upregulate the *Cdkn1a* gene, only TRMs exhibit a greater increase after irradiation. And the radio-resistance is compromised in the absence of the *Cdkn1a* gene and its protein product, p21cip1/WAF1, further confirming the important function of the *Cdkn1a* gene and p21cip1/WAF1 protein in radio-resistance (Ref. 148).

### Immunotherapy resistance

According to previous studies, we classify this immunotherapy associated with macrophages into five main groups: (1) inhibiting recruitment of monocytes, such as CSF1/CSF1R inhibitor and CCL2/CCR2 inhibitor; (2) blocking pro-tumour functions, such as VEGFR inhibitor; (3) promoting phagocytosis of macrophages, such as CD47/SIRP $\alpha$  inhibitor; (4) reprogramming TAMs into an immunostimulatory phenotype, such as CD40 agonists; (5) inhibiting immune checkpoint proteins, such as PD-L1 inhibitor and CTLA4 inhibitor. To date, numerous therapeutic strategies specifically modulating TAM functions have shown promising results in preclinical studies and clinical trials (Table 1). However, the tumour recurrence rate of various tumours is still high, bringing a huge problem, immunotherapy resistance, to clinical therapy.

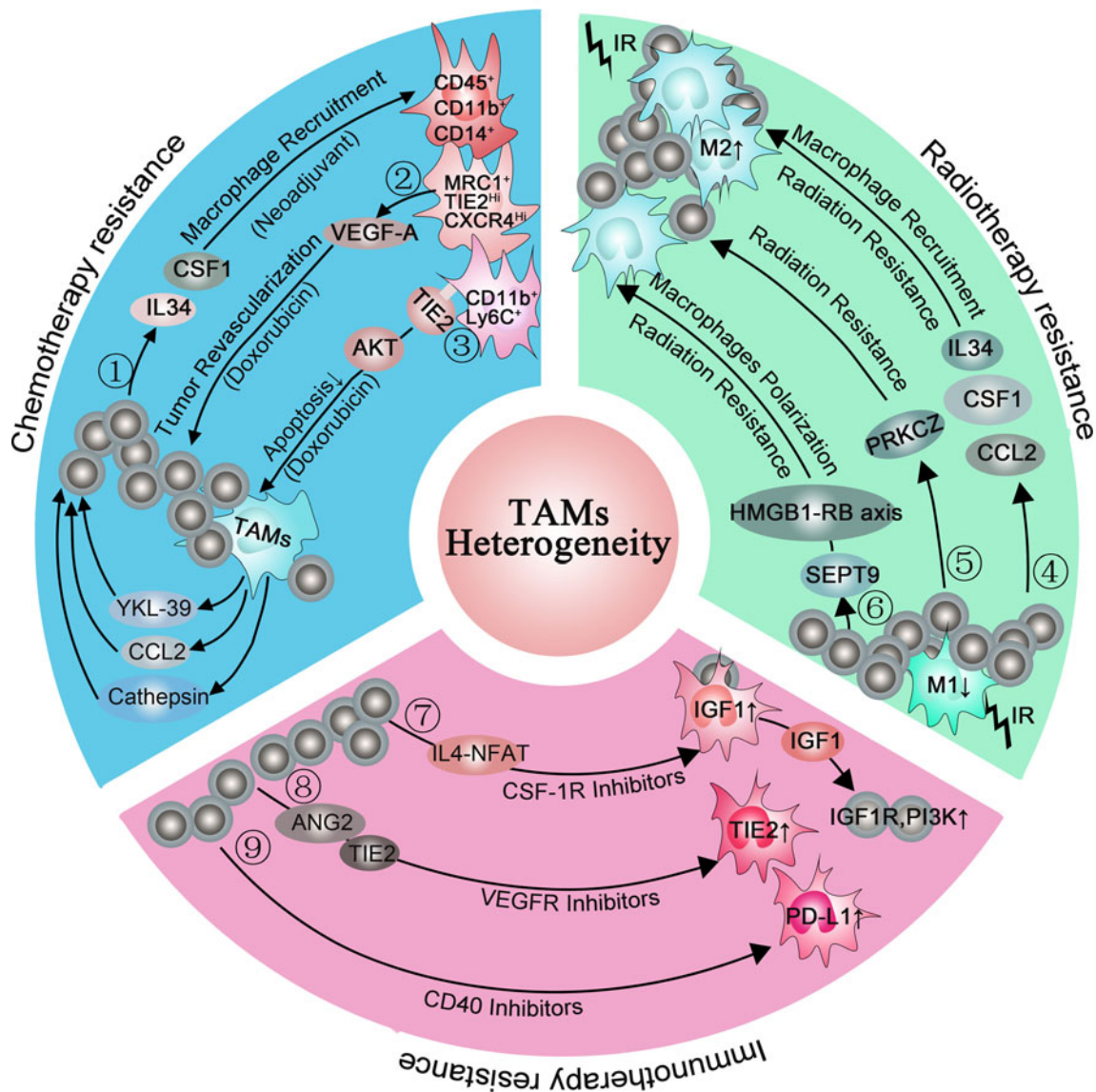
Although CSR-1R inhibitors prolonged the OS of glioblastoma multiforme in mouse models, more than 50% of tumours

eventually recurred accompanied with elevated phosphatidylinositol 3-kinase (PI3K) pathway activity (Ref. 149). In recurrence tumours, the IGF-1 which is upregulated in TAMs through the IL4-NFAT pathway is secreted into the extracellular environment. Then, IGF-1R and PI3K signalling pathways are activated in glioma cells, supporting tumour growth and malignancy.

In the immunotherapy resistance murine cancer models to anti-VEGF antibody, they found upregulated alternative angiogenic pathways in VEGFR-1 and VEGFR-3 depletion macrophages, facilitating escape from anti-VEGF therapy (Ref. 150). Therefore, finding out alternative angiogenic pathways and targeting them is essential for immunotherapy resistance. When employing late-stage RIP1-Tag2 pancreatic neuroendocrine tumours (PNETs) which develop resistance to VEGFR2 blockade, Rigamonti *et al.* found upregulated ANG2 and TIE2 accompanied with enhanced infiltration of TIE2<sup>+</sup> macrophages. Further study found that dual ANG2/VEGFR2 blockade inhibited revascularisation and progression in most of the PNETs (Ref. 151).

Another immunotherapy, anti-CD40 treatment, upregulated the expression of PD-L1 on tumour-infiltrating monocytes and macrophages, indicating immunotherapy resistance. To reverse this condition, both anti-CD40 antibody and PD-L1 blocking antibody were applied in murine tumour cell lines. This double-antibody therapy resulted in complete tumour rejection in  $>50\%$  of the mice, whereas anti-CD40 treatment alone only led to  $<5\%$  tumour rejection in mice (Ref. 152). Until now, the expression of PD-1/PD-L1 within the TME is considered as the main mechanism escaping immune surveillance and enhancing resistance, uncovering an idea that the blockade of the PD-1/PD-L1 axis is an available therapeutic strategy against resistance (Refs 153, 154) (Fig. 2 pink box). Interestingly, a study pointed out that, except membrane-localised PD-L1, a portion of PD-L1 is also located in the nucleus and cytoskeleton in human and mouse cancer cell lines (Ref. 155). Moreover, blocking its nuclear translocation through acetylation enhanced the anti-tumour response to PD-1 blockade, indicating that the location of PD-L1 is of great importance in resistance (Ref. 156). Thus, we





**Fig. 3.** Macrophages are involved in chemotherapy resistance (blue box), radiotherapy resistance (green box) and immunotherapy resistance (pink box). ①: Chemotherapy (neoadjuvant) induced mammary epithelial cells to produce macrophage recruitment factors, including colony-stimulating factor 1 (CSF1) and interleukin-34, and a higher percentage of CD45<sup>+</sup>CD11b<sup>+</sup>CD14<sup>+</sup> macrophages infiltrated in breast cancer biopsy samples. ②: (MRC1<sup>+</sup> TIE2<sup>hi</sup> CXCR4<sup>hi</sup>) macrophages promoted tumour revascularisation and relapse after chemotherapy (Doxorubicin) via VEGF-A release. ③: CD11b<sup>+</sup> Ly6C<sup>+</sup> macrophages abundantly expressed TIE2 and prevented macrophages from apoptosis via the AKT-dependent signalling pathway. ④: Radiotherapy increased the expression of macrophage recruitment factors, including colony-stimulating factor 1 (CSF1), CCL2 and interleukin-34, promoting M2 macrophages polarisation. ⑤: M2 macrophages elevated the level of PRKCZ in the tumour and leading to radiation resistance in the end. ⑥: SEPT9 increases irradiation resistance by interacting with the HMGB1-RB axis. ⑦: CSF-1R inhibitors elevated the IGF1 protein level in macrophages via the IL4-NFAT pathway, then IGF-1 secreted into the extracellular environment and resulted in activation of IGF-1R and PI3K signalling in tumour cells. ⑧: VEGFR inhibitors elevated TIE2 protein level in macrophages via ANG2, upregulating angiogenic pathways. ⑨: CD40 inhibitors increased PD-L1 expression in macrophages.

propose a question: whether the PD-L1 location in macrophages also changed during immunotherapy resistance? (Fig. 3).

### Conclusion and prospect

TAMs are highly plastic cells infiltrated in tumours. These macrophages are related to tumour death, tumour initiation, migration and invasion. TAMs heterogeneity increases resistance in cancer therapy, emphasizing the importance of defining the subpopulation of TAMs in the TME. Macrophages are divided into TRMs and BMDMs according to their sources, divided into M1 and M2 macrophages according to different surface molecules, and subdivided into different subpopulations according to their function. Additionally, more classification methods of macrophages are being discovered recently. However, before the relationship between macrophages and tumours can be fully understood,

many questions remain to be answered: (1) Is there any preference for polarisation pathways in different tumours? (2) which classifications cover all types of macrophages? (3) which subpopulation can provide the most suitable target for clinical therapy? (4) why can macrophages differentiate into different subsets? (5) what are the consequence of increased macrophages heterogeneity?

Macrophage heterogeneity is related to tumour heterogeneity, stimulating factor heterogeneity and TME heterogeneity. Among them, tumour heterogeneity is mainly manifested as (1) the functions of macrophages from different sources are different; (2) the localisation of macrophages in the same tumour is different; (3) there are differences in macrophages in different types of tumours. The heterogeneity of stimulating factors is mainly manifested by the difference in stimulation pathways. M1 macrophage polarisation is mainly involved in the LPS/IFN- $\gamma$  polarisation pathway, while M2 macrophage polarisation is involved in the

IL4/13/10 polarisation pathway. In addition, non-coding RNA also participates in macrophage polarisation.

Because of the different sensitivity of macrophages to therapy, the number of macrophages that are resistant to chemotherapy, radiotherapy and immunotherapy eventually increases, which in turn causes tumour recurrence. Therefore, studying the subpopulations that increased in therapy resistance and targeting them will guide clinical therapy in the future.

This review provides diverse introductions to TAM heterogeneity. From a clinical point of view, we provide the possibility to precisely target different subpopulations of TAMs.

**Acknowledgements.** This work was supported by the National Natural Science Foundation of China (No. 81971341; 82101704) and China Postdoctoral Science Foundation (No. 2020M682674; 2021T140144).

**Conflict of interest.** None.

## References

1. Wang H *et al.* (2021) The impact of the tumor microenvironment on macrophage polarization in cancer metastatic progression. *International Journal of Molecular Sciences* **22**, 6560.
2. Cassetta L and Pollard JW (2018) Targeting macrophages: therapeutic approaches in cancer. *Nature Reviews Drug Discovery* **17**, 887–904.
3. Kalbasi A *et al.* (2017) Tumor-derived CCL2 mediates resistance to radiotherapy in pancreatic ductal adenocarcinoma. *Clinical Cancer Research* **23**, 137–148.
4. Wei C *et al.* (2019) Crosstalk between cancer cells and tumor associated macrophages is required for mesenchymal circulating tumor cell-mediated colorectal cancer metastasis. *Molecular Cancer* **18**, 64.
5. Liu D *et al.* (2019) LSECtin on tumor-associated macrophages enhances breast cancer stemness via interaction with its receptor BTN3A3. *Cell Research* **29**, 365–378.
6. Chen XJ *et al.* (2019) Hypoxia-induced ZEB1 promotes cervical cancer progression via CCL8-dependent tumour-associated macrophage recruitment. *Cell Death & Disease* **10**, 508.
7. Geng Y *et al.* (2021) A notch-dependent inflammatory feedback circuit between macrophages and cancer cells regulates pancreatic cancer metastasis. *Cancer Research* **81**, 64–76.
8. El-Arabey AA *et al.* (2020) GATA3 as a master regulator for interactions of tumor-associated macrophages with high-grade serous ovarian carcinoma. *Cellular Signalling* **68**, 109539.
9. Edin S *et al.* (2013) Macrophages: good guys in colorectal cancer. *Oncoimmunology* **2**, e23038.
10. Shapouri-Moghaddam A *et al.* (2018) Macrophage plasticity, polarization, and function in health and disease. *Journal of Cellular Physiology* **233**, 6425–6440.
11. Feng PH *et al.* (2014) Tumor-associated macrophages in stage IIIA pN2 non-small cell lung cancer after neoadjuvant chemotherapy and surgery. *American Journal of Translational Research* **6**, 593–603.
12. Dai F *et al.* (2010) The number and microlocalization of tumor-associated immune cells are associated with patient's survival time in non-small cell lung cancer. *BMC Cancer* **10**, 220.
13. Chen L *et al.* (2016) Tie2 expression on macrophages is required for blood vessel reconstruction and tumor relapse after chemotherapy. *Cancer Research* **76**, 6828–6838.
14. DeNardo DG *et al.* (2011) Leukocyte complexity predicts breast cancer survival and functionally regulates response to chemotherapy. *Cancer Discovery* **1**, 54–67.
15. Hughes R *et al.* (2015) Perivascular M2 macrophages stimulate tumor relapse after chemotherapy. *Cancer Research* **75**, 3479–3491.
16. Gomez Perdiguero E *et al.* (2015) Tissue-resident macrophages originate from yolk-sac-derived erythro-myeloid progenitors. *Nature* **518**, 547–551.
17. Stremmel C *et al.* (2018) Yolk sac macrophage progenitors traffic to the embryo during defined stages of development. *Nature Communications* **9**, 75.
18. Kumar V *et al.* (2016) The nature of myeloid-derived suppressor cells in the tumor microenvironment. *Trends in Immunology* **37**, 208–220.
19. Mondini M *et al.* (2019) CCR2-dependent recruitment of Tregs and monocytes following radiotherapy is associated with TNF $\alpha$ -mediated resistance. *Cancer Immunology Research* **7**, 376–387.
20. Bowman RL *et al.* (2016) Macrophage ontogeny underlies differences in tumor-specific education in brain malignancies. *Cell Reports* **17**, 2445–2459.
21. Zhu Y *et al.* (2017) Tissue-resident macrophages in pancreatic ductal adenocarcinoma originate from embryonic hematopoiesis and promote tumor progression. *Immunity* **47**, 323–338.e6.
22. Komohara Y *et al.* (2016) Tumor-associated macrophages: potential therapeutic targets for anti-cancer therapy. *Advanced Drug Delivery Reviews* **99**(Pt B), 180–185.
23. Jeannin P *et al.* (2018) The roles of CSFs on the functional polarization of tumor-associated macrophages. *FEBS Journal* **285**, 680–699.
24. Colin S, Chinetti-Gbaguidi G and Staels B (2014) Macrophage phenotypes in atherosclerosis. *Immunological Reviews* **262**, 153–166.
25. Nikovics K *et al.* (2020) Hybridization-chain-reaction is a relevant method for *in situ* detection of M2d-like macrophages in a mini-pig model. *FASEB Journal* **34**, 15675–15686.
26. Singhal S *et al.* (2019) Human tumor-associated monocytes/macrophages and their regulation of T cell responses in early-stage lung cancer. *Science Translational Medicine* **11**, eaat1500.
27. Sánchez-Martín L *et al.* (2011) The chemokine CXCL12 regulates monocyte-macrophage differentiation and RUNX3 expression. *Blood* **117**, 88–97.
28. Li M *et al.* (2020) Remodeling tumor immune microenvironment via targeted blockade of PI3K- $\gamma$  and CSF-1/CSF-1R pathways in tumor associated macrophages for pancreatic cancer therapy. *Journal of Controlled Release* **321**, 23–35.
29. Beatty GL *et al.* (2011) CD40 agonists alter tumor stroma and show efficacy against pancreatic carcinoma in mice and humans. *Science (New York, N.Y.)* **331**, 1612–1616.
30. Poh AR and Ernst M (2018) Targeting macrophages in cancer: from bench to bedside. *Frontiers in Oncology* **8**, 49.
31. Li H, Somiya M and Kuroda S (2021) Enhancing antibody-dependent cellular phagocytosis by Re-education of tumor-associated macrophages with resiquimod-encapsulated liposomes. *Biomaterials* **268**, 120601.
32. Biswas SK *et al.* (2006) A distinct and unique transcriptional program expressed by tumor-associated macrophages (defective NF- $\kappa$ B and enhanced IRF-3/STAT1 activation). *Blood* **107**, 2112–2122.
33. Zilionis R *et al.* (2019) Single-cell transcriptomics of human and mouse lung cancers reveals conserved myeloid populations across individuals and species. *Immunity* **50**, 1317–1334.e10.
34. Wagner J *et al.* (2019) A single-cell atlas of the tumor and immune ecosystem of human breast cancer. *Cell* **177**, 1330–1345.e18.
35. Arlauckas SP *et al.* (2018) Arg1 expression defines immunosuppressive subsets of tumor-associated macrophages. *Theranostics* **8**, 5842–5854.
36. Qian BZ and Pollard JW (2010) Macrophage diversity enhances tumor progression and metastasis. *Cell* **141**, 39–51.
37. Bernsmeier C, van der Merwe S and Périanin A (2020) Innate immune cells in cirrhosis. *Journal of Hepatology* **73**, 186–201.
38. Liu S *et al.* (2020) M1-like macrophage-derived exosomes suppress angiogenesis and exacerbate cardiac dysfunction in a myocardial infarction microenvironment. *Basic Research in Cardiology* **115**, 22.
39. Li J, Li N and Wang J (2020) M1 macrophage-derived exosome-encapsulated cisplatin can enhance its anti-lung cancer effect. *Mimerva Medica*. doi: 10.23736/S0026-4806.20.06564-7.
40. Wang P *et al.* (2019) Exosomes from M1-polarized macrophages enhance paclitaxel antitumor activity by activating macrophage-mediated inflammation. *Theranostics* **9**, 1714–1727.
41. Quante M and Wang TC (2008) Inflammation and stem cells in gastrointestinal carcinogenesis. *Physiology (Bethesda)* **23**, 350–359.
42. Marcelis L, Tousseyn T and Sagaert X (2019) MALT lymphoma as a model of chronic inflammation-induced gastric tumor development. *Current Topics in Microbiology and Immunology* **421**, 77–106.
43. Mahboubi Rabbani SMI and Zarghi A (2019) Selective COX-2 inhibitors as anticancer agents: a patent review (2014–2018). *Expert Opinion on Therapeutic Patents* **29**, 407–427.
44. Balkwill F, Charles KA and Mantovani A (2005) Smoldering and polarized inflammation in the initiation and promotion of malignant disease. *Cancer Cell* **7**, 211–217.
45. Helm O *et al.* (2014) Tumor-associated macrophages exhibit pro- and anti-inflammatory properties by which they impact on pancreatic tumorigenesis. *International Journal of Cancer* **135**, 843–861.
46. Zong Z *et al.* (2019) M1 macrophages induce PD-L1 expression in hepatocellular carcinoma cells through IL-1 $\beta$  signaling. *Frontiers in Immunology* **10**, 1643.

47. Denning TL *et al.* (2007) Lamina propria macrophages and dendritic cells differentially induce regulatory and interleukin 17-producing T cell responses. *Nature Immunology* **8**, 1086–1094.
48. Liu C *et al.* (2019) Treg cells promote the SREBP1-dependent metabolic fitness of tumor-promoting macrophages via repression of CD8(+) T cell-derived interferon- $\gamma$ . *Immunity* **51**, 381–397.e6.
49. Zhu C *et al.* (2017) Activation of CECR1 in M2-like TAMs promotes paracrine stimulation-mediated glial tumor progression. *Neuro-Oncology* **19**, 648–659.
50. Wang Y *et al.* (2018) The role of C1QB in CSF-1-dependent PKC $\zeta$  activation and macrophage migration. *Experimental Cell Research* **362**, 11–16.
51. Yin M *et al.* (2016) Tumor-associated macrophages drive spheroid formation during early transcoelomic metastasis of ovarian cancer. *Journal of Clinical Investigation* **126**, 4157–4173.
52. Lan J *et al.* (2019) M2 macrophage-derived exosomes promote cell migration and invasion in colon cancer. *Cancer Research* **79**, 146–158.
53. Zheng P *et al.* (2018) Tumor-associated macrophages-derived exosomes promote the migration of gastric cancer cells by transfer of functional apolipoprotein E. *Cell Death & Disease* **9**, 434.
54. Han Y *et al.* (2019) Tumor-associated macrophages promote lung metastasis and induce epithelial-mesenchymal transition in osteosarcoma by activating the COX-2/STAT3 axis. *Cancer Letters* **440–441**, 116–125.
55. Dongre A and Weinberg RA (2019) New insights into the mechanisms of epithelial-mesenchymal transition and implications for cancer. *Nature Reviews Molecular Cell Biology* **20**, 69–84.
56. Hao S *et al.* (2017) Macrophage phenotypic mechanomodulation of enhancing bone regeneration by superparamagnetic scaffold upon magnetization. *Biomaterials* **140**, 16–25.
57. Annamalai RT *et al.* (2018) Harnessing macrophage-mediated degradation of gelatin microspheres for spatiotemporal control of BMP2 release. *Biomaterials* **161**, 216–227.
58. Halin S *et al.* (2009) Extratumoral macrophages promote tumor and vascular growth in an orthotopic rat prostate tumor model. *Neoplasia (New York, N.Y.)* **11**, 177–186.
59. Lin EY *et al.* (2006) Macrophages regulate the angiogenic switch in a mouse model of breast cancer. *Cancer Research* **66**, 11238–11246.
60. Giraudo E, Inoue M and Hanahan D (2004) An amino-bisphosphonate targets MMP-9-expressing macrophages and angiogenesis to impair cervical carcinogenesis. *Journal of Clinical Investigation* **114**, 623–633.
61. Zhang PC *et al.* (2020) AT-533, a novel Hsp90 inhibitor, inhibits breast cancer growth and HIF-1 $\alpha$ /VEGF/VEGFR-2-mediated angiogenesis *in vitro* and *in vivo*. *Biochemical Pharmacology* **172**, 113771.
62. Werno C *et al.* (2010) Knockout of HIF-1 $\alpha$  in tumor-associated macrophages enhances M2 polarization and attenuates their pro-angiogenic responses. *Carcinogenesis* **31**, 1863–1872.
63. Niu Y *et al.* (2020) HIF2-induced long noncoding RNA RAB11B-AS1 promotes hypoxia-mediated angiogenesis and breast cancer metastasis. *Cancer Research* **80**, 964–975.
64. Du R *et al.* (2008) HIF1 $\alpha$  induces the recruitment of bone marrow-derived vascular modulatory cells to regulate tumor angiogenesis and invasion. *Cancer Cell* **13**, 206–220.
65. Zhang B *et al.* (2020) Essential contribution of macrophage Tie2 signal mediated autophagy in laser-induced choroidal neovascularization. *Experimental Eye Research* **193**, 107972.
66. Wyckoff J *et al.* (2004) A paracrine loop between tumor cells and macrophages is required for tumor cell migration in mammary tumors. *Cancer Research* **64**, 7022–7029.
67. Riabov V *et al.* (2014) Role of tumor associated macrophages in tumor angiogenesis and lymphangiogenesis. *Frontiers in Physiology* **5**, 75.
68. Yoh K *et al.* (2016) A randomized, double-blind, phase II study of ramucirumab plus docetaxel vs placebo plus docetaxel in Japanese patients with stage IV non-small cell lung cancer after disease progression on platinum-based therapy. *Lung Cancer* **99**, 186–193.
69. Villaruz LC and Socinski MA (2015) The role of anti-angiogenesis in non-small-cell lung cancer: an update. *Current Oncology Reports* **17**, 26.
70. Zhang D *et al.* (2019) poFUT1 promotes uterine angiogenesis and vascular remodeling via enhancing the O-fucosylation on uPA. *Cell Death & Disease* **10**, 775.
71. Binmadi NO *et al.* (2011) Rho-mediated activation of PI(4)P5K and lipid second messengers is necessary for promotion of angiogenesis by semaphorin 4D. *Angiogenesis* **14**, 309–319.
72. Yang Y *et al.* (2021) M2 macrophage-derived exosomes promote angiogenesis and growth of pancreatic ductal adenocarcinoma by targeting E2F2. *Molecular Therapy* **29**, 1226–1238.
73. Zumsteg A *et al.* (2009) Myeloid cells contribute to tumor lymphangiogenesis. *PLoS ONE* **4**, e7067.
74. Fu LQ *et al.* (2020) The roles of tumor-associated macrophages in tumor angiogenesis and metastasis. *Cellular Immunology* **353**, 104119.
75. Bieniasz-Krzywiac P *et al.* (2019) Podoplanin-expressing macrophages promote lymphangiogenesis and lymphoinvasion in breast cancer. *Cell Metabolism* **30**, 917–936.e10.
76. Cahill TJ *et al.* (2021) Tissue-resident macrophages regulate lymphatic vessel growth and patterning in the developing heart. *Development* **148**, dev194563.
77. Loyher PL *et al.* (2018) Macrophages of distinct origins contribute to tumor development in the lung. *Journal of Experimental Medicine* **215**, 2536–2553.
78. Etzerodt A *et al.* (2020) Tissue-resident macrophages in omentum promote metastatic spread of ovarian cancer. *Journal of Experimental Medicine* **217**, e20191869.
79. Franklin RA *et al.* (2014) The cellular and molecular origin of tumor-associated macrophages. *Science* **344**, 921–925.
80. Ostuni R *et al.* (2015) Macrophages and cancer: from mechanisms to therapeutic implications. *Trends in Immunology* **36**, 229–239.
81. Gautier EL *et al.* (2012) Gene-expression profiles and transcriptional regulatory pathways that underlie the identity and diversity of mouse tissue macrophages. *Nature Immunology* **13**, 1118–1128.
82. Wu J *et al.* (2018) MerTK as a therapeutic target in glioblastoma. *Neuro-Oncology* **20**, 92–102.
83. Akkari L *et al.* (2020) Dynamic changes in glioma macrophage populations after radiotherapy reveal CSF-1R inhibition as a strategy to overcome resistance. *Science Translational Medicine* **12**, eaaw7843.
84. Moore KJ, Sheedy FJ and Fisher EA (2013) Macrophages in atherosclerosis: a dynamic balance. *Nature Reviews Immunology* **13**, 709–721.
85. Pinto ML *et al.* (2019) The two faces of tumor-associated macrophages and their clinical significance in colorectal cancer. *Frontiers in Immunology* **10**, 1875.
86. Yang C *et al.* (2019) Elevated CD163(+)/CD68(+) ratio at tumor invasive front is closely associated with aggressive phenotype and poor prognosis in colorectal cancer. *International Journal of Biological Sciences* **15**, 984–998.
87. Mwafy SE and El-Guindy DM (2020) Pathologic assessment of tumor-associated macrophages and their histologic localization in invasive breast carcinoma. *Journal of the Egyptian National Cancer Institute* **32**, 6.
88. Gulubova M *et al.* (2013) The density of macrophages in colorectal cancer is inversely correlated to TGF- $\beta$ 1 expression and patients' survival. *Journal of Molecular Histology* **44**, 679–692.
89. Zhou Q *et al.* (2010) The density of macrophages in the invasive front is inversely correlated to liver metastasis in colon cancer. *Journal of Translational Medicine* **8**, 13.
90. Salmon H *et al.* (2019) Host tissue determinants of tumour immunity. *Nature Reviews Cancer* **19**, 215–227.
91. Buisseret L *et al.* (2017) Tumor-infiltrating lymphocyte composition, organization and PD-1/ PD-L1 expression are linked in breast cancer. *Oncoimmunology* **6**, e1257452.
92. Hagemann T *et al.* (2009) Regulation of macrophage function in tumors: the multifaceted role of NF- $\kappa$ B. *Blood* **113**, 3139–3146.
93. Wang YC *et al.* (2010) Notch signaling determines the M1 versus M2 polarization of macrophages in antitumor immune responses. *Cancer Research* **70**, 4840–4849.
94. Lin Y *et al.* (2018) Notch signaling modulates macrophage polarization and phagocytosis through direct suppression of signal regulatory protein  $\alpha$  expression. *Frontiers in Immunology* **9**, 1744.
95. Zhou P *et al.* (2020) Interleukin 37 suppresses M1 macrophage polarization through inhibition of the Notch1 and nuclear factor kappa B pathways. *Frontiers in Cell and Developmental Biology* **8**, 56.
96. Liu L *et al.* (2020) Progranulin inhibits LPS-induced macrophage M1 polarization via NF- $\kappa$ B and MAPK pathways. *BMC Immunology* **21**, 32.
97. Huang Y *et al.* (2019) TET1 knockdown inhibits *Porphyromonas gingivalis* LPS/IFN- $\gamma$ -induced M1 macrophage polarization through the NF- $\kappa$ B pathway in THP-1 cells. *International Journal of Molecular Sciences* **20**, 2023.
98. Huangfu N *et al.* (2020) RBM4 regulates M1 macrophages polarization through targeting STAT1-mediated glycolysis. *International Immunopharmacology* **83**, 106432.



99. Liu Y *et al.* (2019) The N(6)-methyladenosine (m(6)A)-forming enzyme METTL3 facilitates M1 macrophage polarization through the methylation of STAT1 mRNA. *American Journal of Physiology. Cell Physiology* **317**, C762–C775.
100. Wang X *et al.* (2016) Epigenetic regulation of macrophage polarization and inflammation by DNA methylation in obesity. *JCI Insight* **1**, e87748.
101. Mullican SE *et al.* (2011) Histone deacetylase 3 is an epigenomic brake in macrophage alternative activation. *Genes & Development* **25**, 2480–2488.
102. Junntila IS (2018) Tuning the cytokine responses: an update on interleukin (IL)-4 and IL-13 receptor complexes. *Frontiers in Immunology* **9**, 888.
103. Binnemars-Postma K *et al.* (2018) Targeting the Stat6 pathway in tumor-associated macrophages reduces tumor growth and metastatic niche formation in breast cancer. *FASEB Journal* **32**, 969–978.
104. Gao S *et al.* (2015) Curcumin induces M2 macrophage polarization by secretion IL-4 and/or IL-13. *Journal of Molecular and Cellular Cardiology* **85**, 131–139.
105. Handa P *et al.* (2019) Iron alters macrophage polarization status and leads to steatohepatitis and fibrogenesis. *Journal of Leukocyte Biology* **105**, 1015–1026.
106. Satoh T *et al.* (2010) The Jmjd3-Irf4 axis regulates M2 macrophage polarization and host responses against helminth infection. *Nature Immunology* **11**, 936–944.
107. Suzuki A *et al.* (2015) Targeting of IL-4 and IL-13 receptors for cancer therapy. *Cytokine* **75**, 79–88.
108. Bi Y *et al.* (2019) M2 macrophages as a potential target for antiatherosclerosis treatment. *Neural Plasticity* **2019**, 6724903.
109. Yin Z *et al.* (2018) IL-6/STAT3 pathway intermediates M1/M2 macrophage polarization during the development of hepatocellular carcinoma. *Journal of Cellular Biochemistry* **119**, 9419–9432.
110. Tarassishin L, Suh HS and Lee SC (2011) Interferon regulatory factor 3 plays an anti-inflammatory role in microglia by activating the PI3K/Akt pathway. *Journal of Neuroinflammation* **8**, 187.
111. Yu H, Pardoll D and Jove R (2009) STATs in cancer inflammation and immunity: a leading role for STAT3. *Nature Reviews Cancer* **9**, 798–809.
112. Liao X *et al.* (2011) Krüppel-like factor 4 regulates macrophage polarization. *Journal of Clinical Investigation* **121**, 2736–2749.
113. Li H *et al.* (2018) Transcriptional regulation of macrophages polarization by MicroRNAs. *Frontiers in Immunology* **9**, 1175.
114. Tao S *et al.* (2020) Linc00514 promotes breast cancer metastasis and M2 polarization of tumor-associated macrophages via Jagged1-mediated notch signaling pathway. *Journal of Experimental & Clinical Cancer Research: CR* **39**, 191.
115. Cao J *et al.* (2019) LncRNA-MM2P identified as a modulator of macrophage M2 polarization. *Cancer Immunology Research* **7**, 292–305.
116. Pritchard A *et al.* (2020) Lung tumor cell-derived exosomes promote M2 macrophage polarization. *Cells* **9**, 1303.
117. Murdoch C, Muthana M and Lewis CE (2005) Hypoxia regulates macrophage functions in inflammation. *Journal of Immunology* **175**, 6257–6263.
118. Henze AT and Mazzone M (2016) The impact of hypoxia on tumor-associated macrophages. *Journal of Clinical Investigation* **126**, 3672–3679.
119. Colegio OR *et al.* (2014) Functional polarization of tumour-associated macrophages by tumour-derived lactic acid. *Nature* **513**, 559–563.
120. Tripathi C *et al.* (2014) Macrophages are recruited to hypoxic tumor areas and acquire a pro-angiogenic M2-polarized phenotype via hypoxic cancer cell derived cytokines oncostatin M and eotaxin. *Oncotarget* **5**, 5350–5368.
121. Chen XJ *et al.* (2019) The role of the hypoxia-Nrp-1 axis in the activation of M2-like tumor-associated macrophages in the tumor microenvironment of cervical cancer. *Molecular Carcinogenesis* **58**, 388–397.
122. Park JE *et al.* (2019) Hypoxia-induced tumor exosomes promote M2-like macrophage polarization of infiltrating myeloid cells and microRNA-mediated metabolic shift. *Oncogene* **38**, 5158–5173.
123. Lima L *et al.* (2014) The predominance of M2-polarized macrophages in the stroma of low-hypoxic bladder tumors is associated with BCG immunotherapy failure. *Urologic Oncology* **32**, 449–457.
124. Chen XJ *et al.* (2021) A novel lymphatic pattern promotes metastasis of cervical cancer in a hypoxic tumour-associated macrophage-dependent manner. *Angiogenesis* **24**, 549–565.
125. Laoui D *et al.* (2014) Tumor hypoxia does not drive differentiation of tumor-associated macrophages but rather fine-tunes the M2-like macrophage population. *Cancer Research* **74**, 24–30.
126. Jeong H *et al.* (2019) Tumor-associated macrophages enhance tumor hypoxia and aerobic glycolysis. *Cancer Research* **79**, 795–806.
127. Gan ZS *et al.* (2017) Iron reduces M1 macrophage polarization in RAW264.7 macrophages associated with inhibition of STAT1. *Mediators of Inflammation* **2017**, 8570818.
128. Thielmann CM *et al.* (2019) Iron accumulation in tumor-associated macrophages marks an improved overall survival in patients with lung adenocarcinoma. *Scientific Reports* **9**, 11326.
129. Sun JL *et al.* (2021) Tumor cell-imposed iron restriction drives immunosuppressive polarization of tumor-associated macrophages. *Journal of Translational Medicine* **19**, 347.
130. Rong L *et al.* (2019) Iron chelated melanin-like nanoparticles for tumor-associated macrophage repolarization and cancer therapy. *Biomaterials* **225**, 119515.
131. Chang VC, Cotterchio M and Khoo E (2019) Iron intake, body iron status, and risk of breast cancer: a systematic review and meta-analysis. *BMC Cancer* **19**, 543.
132. Lv M *et al.* (2020) Manganese is critical for antitumor immune responses via cGAS-STING and improves the efficacy of clinical immunotherapy. *Cell Research* **30**, 966–979.
133. Song M *et al.* (2016) Bioconjugated manganese dioxide nanoparticles enhance chemotherapy response by priming tumor-associated macrophages toward M1-like phenotype and attenuating tumor hypoxia. *ACS Nano* **10**, 633–647.
134. Christie EL and Bowtell DDL (2017) Acquired chemotherapy resistance in ovarian cancer. *Annals of Oncology* **28**(suppl\_8), viii13–viii15.
135. Paulus P *et al.* (2006) Colony-stimulating factor-1 antibody reverses chemoresistance in human MCF-7 breast cancer xenografts. *Cancer Research* **66**, 4349–4356.
136. Shree T *et al.* (2011) Macrophages and cathepsin proteases blunt chemotherapeutic response in breast cancer. *Genes & Development* **25**, 2465–2479.
137. Li D *et al.* (2020) Tumor-associated macrophages secrete CC-chemokine ligand 2 and induce tamoxifen resistance by activating PI3K/Akt/mTOR in breast cancer. *Cancer Science* **111**, 47–58.
138. Kong L *et al.* (2016) Deletion of interleukin-6 in monocytes/macrophages suppresses the initiation of hepatocellular carcinoma in mice. *Journal of Experimental & Clinical Cancer Research: CR* **35**, 131.
139. Ruffell B *et al.* (2014) Macrophage IL-10 blocks CD8+ T cell-dependent responses to chemotherapy by suppressing IL-12 expression in intratumoral dendritic cells. *Cancer Cell* **26**, 623–637.
140. Baghdadi M *et al.* (2016) Chemotherapy-induced IL34 enhances immunosuppression by tumor-associated macrophages and mediates survival of chemoresistant lung cancer cells. *Cancer Research* **76**, 6030–6042.
141. Kzhyshkowska J, Larionova I and Liu T (2019) YKL-39 as a potential new target for anti-angiogenic therapy in cancer. *Frontiers in Immunology* **10**, 2930.
142. Dijkgraaf EM *et al.* (2013) Chemotherapy alters monocyte differentiation to favor generation of cancer-supporting M2 macrophages in the tumor microenvironment. *Cancer Research* **73**, 2480–2492.
143. Mlynska A *et al.* (2018) Platinum sensitivity of ovarian cancer cells does not influence their ability to induce M2-type macrophage polarization. *American Journal of Reproductive Immunology* **80**, e12996.
144. Stafford JH *et al.* (2016) Colony stimulating factor 1 receptor inhibition delays recurrence of glioblastoma after radiation by altering myeloid cell recruitment and polarization. *Neuro-Oncology* **18**, 797–806.
145. Rahal OM *et al.* (2018) Blocking interleukin (IL)4- and IL13-mediated phosphorylation of STAT6 (Tyr641) decreases M2 polarization of macrophages and protects against macrophage-mediated radioresistance of inflammatory breast cancer. *International Journal of Radiation Oncology Biology Physics* **100**, 1034–1043.
146. Jiao X *et al.* (2019) Promoter methylation of SEPT9 as a potential biomarker for early detection of cervical cancer and its overexpression predicts radioresistance. *Clinical Epigenetics* **11**, 120.
147. Malfitano AM *et al.* (2020) Tumor-associated macrophage status in cancer treatment. *Cancers (Basel)* **12**, 1987.
148. Soysa R *et al.* (2019) Fetal origin confers radioresistance on liver macrophages via p21(cip1/WAF1). *Journal of Hepatology* **71**, 553–562.
149. Quail DF *et al.* (2016) The tumor microenvironment underlies acquired resistance to CSF-1R inhibition in gliomas. *Science* **352**, aad3018.

150. **Dalton HJ et al.** (2017) Macrophages facilitate resistance to anti-VEGF therapy by altered VEGFR expression. *Clinical Cancer Research* **23**, 7034–7046.
151. **Rigamonti N et al.** (2014) Role of angiopoietin-2 in adaptive tumor resistance to VEGF signaling blockade. *Cell Reports* **8**, 696–706.
152. **Zippelius A et al.** (2015) Induced PD-L1 expression mediates acquired resistance to agonistic anti-CD40 treatment. *Cancer Immunology Research* **3**, 236–244.
153. **Peng S et al.** (2019) EGFR-TKI resistance promotes immune escape in lung cancer via increased PD-L1 expression. *Molecular Cancer* **18**, 165.
154. **Gong B et al.** (2019) Secreted PD-L1 variants mediate resistance to PD-L1 blockade therapy in non-small cell lung cancer. *Journal of Experimental Medicine* **216**, 982–1000.
155. **Gao Y et al.** (2020) Acetylation-dependent regulation of PD-L1 nuclear translocation dictates the efficacy of anti-PD-1 immunotherapy. *Nature Cell Biology* **22**, 1064–1075.
156. **Fang W et al.** (2021) Progranulin induces immune escape in breast cancer via up-regulating PD-L1 expression on tumor-associated macrophages (TAMs) and promoting CD8(+) T cell exclusion. *Journal of Experimental & Clinical Cancer Research: CR* **40**, 4.