

Research article

## Absence of p53 in Clara cells favours multinucleation and loss of cell cycle arrest

Christopher J Armit\*<sup>1</sup>, Shirley O'Dea<sup>2</sup>, Alan R Clarke<sup>3</sup> and David J Harrison<sup>1</sup>

Address: <sup>1</sup>CRC Laboratories, Department of Pathology, University of Edinburgh, Teviot Place, Edinburgh EH8 9AG, UK, <sup>2</sup>Present address: Mucosal Immunology Laboratory, Biology Department, N.U.I. Maynooth, Co.Kildare, Republic of Ireland and <sup>3</sup>Present address: Cardiff University, School of Biosciences, Cardiff CF10 3US, UK

E-mail: Christopher J Armit\* - [chrisa@hgu.mrc.ac.uk](mailto:chrisa@hgu.mrc.ac.uk); Shirley O'Dea - [SHIRLEY.ODEA@may.ie](mailto:SHIRLEY.ODEA@may.ie); Alan R Clarke - [ClarkeAR@Cardiff.ac.uk](mailto:ClarkeAR@Cardiff.ac.uk); David J Harrison - [david.harrison@ed.ac.uk](mailto:david.harrison@ed.ac.uk)

\*Corresponding author

Published: 21 November 2002

Received: 13 June 2002

*BMC Cell Biology* 2002, **3**:27

Accepted: 21 November 2002

This article is available from: <http://www.biomedcentral.com/1471-2121/3/27>

© 2002 Armit et al; licensee BioMed Central Ltd. This is an Open Access article: verbatim copying and redistribution of this article are permitted in all media for any purpose, provided this notice is preserved along with the article's original URL.

### Abstract

**Background:** The p53 oncosuppressor protein is a critical mediator of the response to injury in mammalian cells and is mutationally inactivated in the majority of lung malignancies. In this analysis, the effects of p53-deficiency were investigated in short-term primary cultures of murine bronchiolar Clara cells. Clara cells, isolated from gene-targeted p53-deficient mice, were compared to cells derived from wild type littermates.

**Results:** p53 null cultures displayed abnormal morphology; specifically, a high incidence of multinucleation, which increased with time in culture. Multinucleated cells were proficient in S phase DNA synthesis, as determined by BrdU incorporation. However, multinucleation did not reflect altered rates of S phase synthesis, which were similar between wild type and p53<sup>-/-</sup> cultures. Nucleation defects in p53<sup>-/-</sup> Clara cells associated with increased centrosome number, as determined by confocal microscopy of pericentrin-stained cultures, and may highlight a novel role of p53 in preserving genomic integrity in lung epithelial cells. Effects of p53-deficiency were also studied following exposure to DNA damage. A p53-dependent reduction in the BrdU index was observed in Clara cells following ionizing radiation. The reduction in BrdU index in wild type cells displayed serum-dependency, and occurred only in the absence of serum. Taken together, these findings demonstrate that in murine primary Clara cell culture, cell cycle arrest is a p53-mediated response to DNA damage, and that extracellular factors, such as serum, influence this response.

**Conclusion:** These findings highlight functions of wild type p53 protein in bipolar spindle formation, centrosome regulation, and growth control in bronchiolar Clara cells.

### Background

The p53 tumour suppressor protein is a critical mediator of the DNA damage response in mammalian cells. In response to DNA damage, wild type p53 protein transcrip-

tionally modulates a battery of downstream genes involved in growth control, DNA repair and apoptosis. It is hypothesised that this 'p53 response' serves to preserve genomic integrity, and reflects the tumour suppressor

properties of p53 relevant to human malignancy [1–3]. There is marked tissue variability in the induction of particular p53-regulated responses, such that an equivalent dose of ionizing radiation, which induces DNA strand breaks, will induce p53-dependent apoptosis in murine thymocytes and small intestinal epithelial cells [4,5], but not hepatocytes [6]. Consequently, it is necessary to consider tissue context when determining roles of p53 in tumour suppression. Further, additional functions of p53 distinct from stress responses, including regulation of centrosome number and ploidy, have been reported and highlight additional, housekeeping functions of p53 in maintaining genomic integrity [7,8]. There is controversy as to which of these functions of p53 (i.e. housekeeping or stress response) is dominant in suppressing tumour formation [9,10], but given the tissue variability of the p53 response, a conservative expectation is that penetrance of the p53-null phenotype in either respect is cell-type dependent. This analysis reports on the effects of p53 deficiency in a subpopulation of murine lung epithelial cells, the Clara cells.

Clara cells are a non-ciliated population of airway epithelial cells which reside predominantly in the bronchioles and which are proficient in surfactant production and xenobiotic metabolism by virtue of expression of surfactant proteins A, B and D and a battery of cytochrome P450 isoenzymes, the nature of which vary between mammalian species [11]. The observation that ciliated cells develop from Clara cells [12–15] revived an interest in the Clara cell as a potential stem cell in the airways. The distal migration of Clara cells in the lungs of animals exposed to ozone, and the frequent 'bronchiolisation' of alveoli in lungs with chronic injury further suggest a role of the Clara cell in alveolar remodeling [16]. However, it is noteworthy that Clara cells display marked interspecific heterogeneity in their distribution [17,18]. Significantly, in rodents Clara cells occupy tracheal, bronchial, and bronchiolar epithelium, whereas primates accommodate Clara cells in only the epithelium lining terminal and respiratory bronchioles [19,20]. It has been suggested that adenocarcinoma of the lung, a tumour of the small airways, represents malignancy of the Clara cell. Indeed, early-stage tumours of transgenic mice expressing SV40 T antigen from the small airway epithelial cell-specific promoter SP-C, a mouse model of human lung adenocarcinoma, frequently express the Clara cell markers *in vivo* [21]. In human lung adenocarcinoma, where progression of the disease is histologically defined, mutation of p53 occurs early in tumour formation, possibly at a preneoplastic stage [22,23]. Presumably, loss of p53 confers a selective advantage in preneoplastic lesions of the lung and is mutated accordingly. However, the mechanism by which p53 loss contributes to lung carcinogenesis is not understood.

In this analysis, the authors explored the hypothesis that Clara cells, as a major progenitor species of the small airways, are relevant to neoplasia of the lung, and that phenotypic effects of p53 deficiency would predominate in this cell type. A method for extracting, isolating, and culturing Clara cells from the mouse has been described previously [24,25] and was incorporated into this analysis to facilitate a greater understanding of the role of p53 in small airway epithelial cells. 5-Bromo-2'-deoxyuridine (BrdU) incorporation assays were employed to assess baseline effects of p53 deficiency in proliferating airway epithelial cell cultures, phenomena difficult to measure *in vivo* due to the low turnover of small airway epithelium. In addition, BrdU incorporation assays were used to characterise the Clara cell response to ionizing radiation, with the intention of identifying DNA damage response functions of p53 in this cell type.

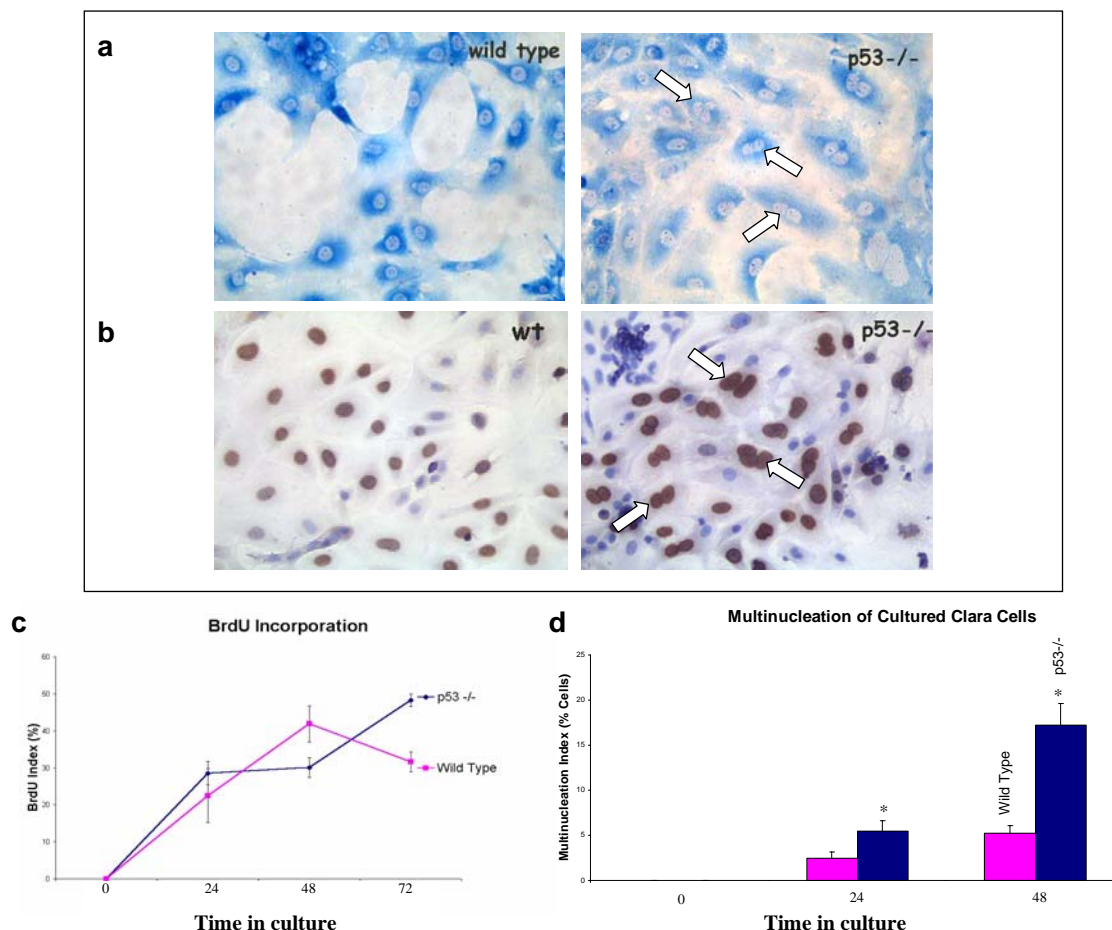
## Results

The effects of p53-deficiency were investigated in short-term primary cultures of bronchiolar Clara cells. Clara cells, isolated from gene-targeted p53-deficient mice, were compared to cells derived from wild type littermates. Briefly, mice were killed, lungs lavaged and intratracheally perfused *in situ* with trypsin, harvested, and incubated at 37°C in PBS for 10 mins. Subsequently, lungs were minced to 1/4 mm diameter portions and passed through a 100 micron mesh. Low centrifuge spins (30 G) removed blood cells and selected for bronchiolar cell clumps. Macrophages and fibroblasts were removed by differential attachment to charged plastic. Isolated bronchiolar cell clumps were washed in PBS, seeded to fibronectin-coated chamber slides, and maintained in this first passage (passage 0) for the remainder of the experiment. Clara cells, identified by the immunohistochemical marker CC10 (Figure 1a), were maintained in serum-free conditions unless otherwise stated.

### Multinucleation in p53-deficient Clara cells

Prior to isolation for culture from adult lung, virtually all bronchiolar cells are in the G0 phase. They are thus effectively synchronised before receiving the proliferative stimulus of isolation and primary culture. BrdU incorporation was used to monitor S phase DNA synthesis in primary Clara cell culture (Figure 1b,1c). In culture, both wild type and p53 null Clara cells displayed a rise in BrdU positivity from near zero at plating (Figure 1c). BrdU indices were similar between wild type and p53 null cells at all time-points, thus wild type and p53 null Clara cells display similar kinetics of entry from G0 to S phase.

From 48 hours in culture, a proportion of p53<sup>-/-</sup> Clara cells displayed morphological abnormalities. Specifically, two or more nuclei were frequently observed in p53<sup>-/-</sup> cultures (Figure 1a,1b,1d). Counts of nuclei/cell (nucleation

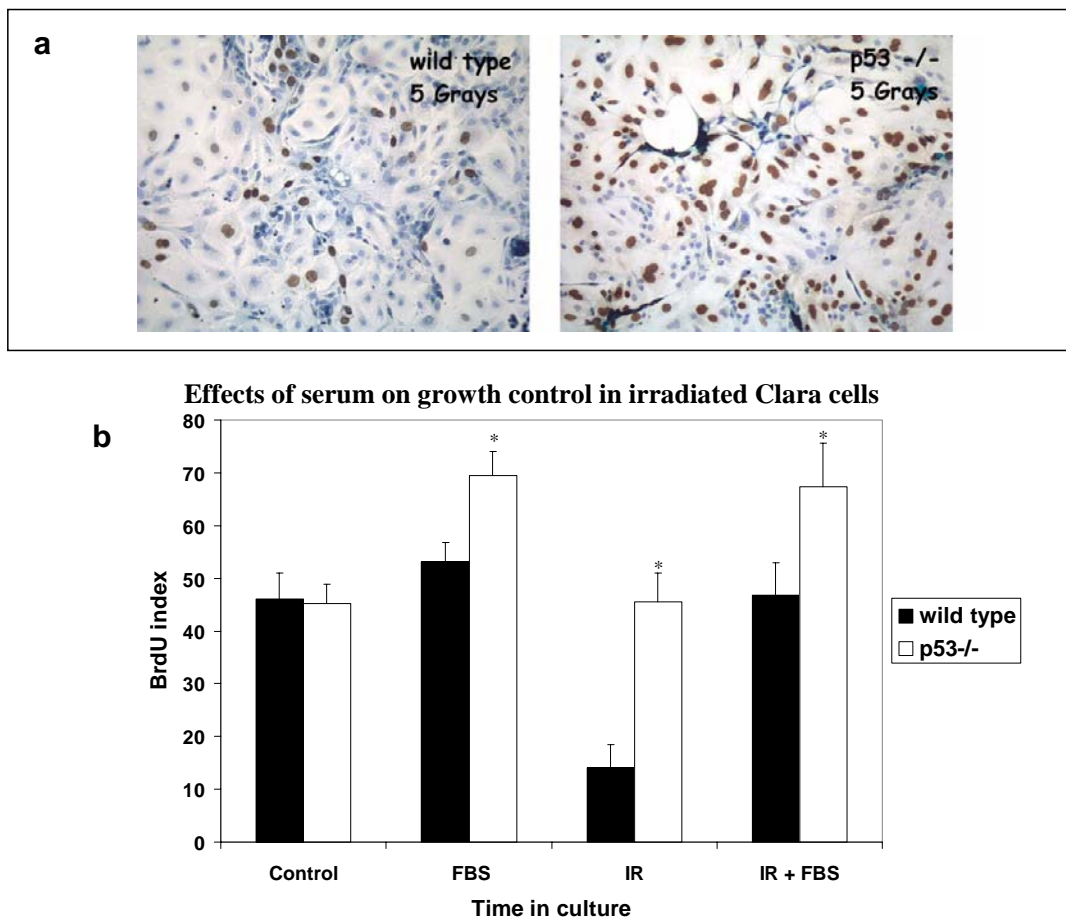


**Figure 1**  
**Multinucleation in p53<sup>-/-</sup> Clara cells** **a)** Primary cultured Clara cells immunohistochemically labelled with anti-CC10 (blue). Expression of the Clara cell specific marker CC10 (Clara cell 10 kDa protein) was observed in cultures derived from both wild type and p53<sup>-/-</sup> lungs. In p53<sup>-/-</sup> cultures, two or more nuclei were frequently observed in a single CC10-positive cell (arrows). **b)** Primary cultured Clara cells immunohistochemically labelled with anti-BrdU. Clara cells were cultured in the presence of BrdU from plating to 24 hours culture, from 24 to 48 hours culture, and from 48 to 72 hours culture. Nuclei that had incorporated BrdU during S phase DNA synthesis were detected with an anti-BrdU antibody (brown). In p53<sup>-/-</sup> cultures, two or more nuclei that had incorporated BrdU were frequently observed in a single cell (arrows). **c)** Both wild type and p53<sup>-/-</sup> Clara cells displayed similar rates of S phase DNA synthesis over the first 3 days in culture, as determined by counts of BrdU incorporation (BrdU index = no. of BrdU positive nuclei / total no. of nuclei, expressed as a percentage). **d)** The number of multinucleated cells in p53<sup>-/-</sup> cultures increased as a feature of time in culture (multinucleation index = no. of multinucleated cells / total no. of cells, expressed as a percentage). The data represents mean ± SD (n = 3), \* indicates p < 0.05 (t test).

index) in primary cultures revealed that multinucleation increased over time in cultures of both genotypes, but was significantly enhanced in the p53<sup>-/-</sup> cells (17.2 ± 2.7 in p53<sup>-/-</sup> versus 5.3 ± 0.9 in wild type at 48 hours culture, Figure 1d). Despite the observation that multinucleated cells in p53<sup>-/-</sup> cultures were often BrdU positive, multinucleation did not reflect altered rates of S phase synthesis, which were similar between wild type and p53<sup>-/-</sup> cultures (Figure 1c).

**Growth arrest abnormalities in p53-deficient Clara cells**

In response to DNA damage, cells undergo growth arrest and repair, or apoptosis. In many cell types, these DNA damage responses are regulated by p53. Wild type and p53 null Clara cell cultures were 5 Gray γ-irradiated and their response to injury monitored over 24 hours. Apoptosis was not a feature of irradiated wild type and p53<sup>-/-</sup> Clara cells, as determined by morphology on Feulgen-stained chamber slides at 24, 48, and 72 hours post-injury. Lack of apoptosis in the immediate 24 hours following injury was confirmed with time-lapse videomicroscopy



**Figure 2**  
**Growth arrest abnormalities in p53-/- Clara cells** **a**) 24 hour-BrdU incorporation assays demonstrating growth arrest abnormalities in irradiated p53-/- Clara cells. Clara cell cultures were incubated with BrdU from 26 to 50 hours in culture. Nuclei that had incorporated BrdU were detected with an anti-BrdU antibody (brown). **b**) The growth arrest response to ionizing radiation (IR) is entirely p53-dependent in Clara cells cultured in serum-free conditions. Addition of 5% foetal bovine serum (FBS) to the culture medium abolishes the p53-dependent DNA damage response. p53-/- cultures additionally display a higher rate of proliferation in the presence of serum, highlighting synergistic effects of p53 and extracellular factors in Clara cell cycle regulation. The data represents mean  $\pm$  SD (n = 3), \* indicates  $p < 0.05$  (t test).

(data not shown). BrdU incorporation – a measure of entry into S phase – decreased by 60% in wild type cells following irradiation ( $14.1 \pm 4.3$  in irradiated cells versus  $46.0 \pm 5.0$  in controls, Figure 2a,2b). By contrast, p53 null cells maintained BrdU indices similar to those of unirradiated controls ( $45.5 \pm 5.6$ , irradiated versus  $45.2 \pm 3.6$ , control). The observed growth arrest in irradiated Clara cells in serum-free conditions is thus p53-dependent.

Response to DNA damage can be influenced by extracellular factors including hormones, cytokines, and unspecified serum factors [6]. The addition of 5% foetal bovine serum to the medium was sufficient to abolish DNA-damage mediated growth arrest in wild type Clara cells, which maintained BrdU indices similar to those of unirradiated

controls ( $46.7 \pm 6.2$  in irradiated cells versus  $53.0 \pm 3.7$  in controls, Figure 2b). Thus the p53-dependent growth arrest response is overcome by growth factor stimulation. In addition, p53-/- cultures displayed a higher rate of proliferation in the presence of serum. The BrdU index of p53-/- Clara cells was 50% greater when cultured in the presence of 5% foetal bovine serum ( $69.4 \pm 4.6$ , serum versus  $45.2 \pm 3.6$ , serum-free). p53-/- cultures did not growth arrest following radiation injury, but rather maintained the high rate of S phase synthesis enforced by the addition of serum ( $67.4 \pm 8.1$ , irradiated versus  $69.4 \pm 4.6$ , control, Figure 2b). Neither radiation injury nor serum treatment significantly altered the number of multinucleated cells in Clara cell cultures, which remained similar to those of unirradiated controls (data not shown). Taken together,

these findings highlight synergistic effects of p53 and extracellular factors in Clara cell cycle regulation.

#### **Centrosome amplification in p53-deficient Clara cells**

It was hypothesised that multinucleation in p53<sup>-/-</sup> cells represents a failure to undergo cytokinesis. Time-lapse videomicroscopy was employed to assess mitosis and cytokinesis abnormalities. p53 null cells displayed an array of M phase abnormalities, including multiple spindle formation and failure to segregate nuclei mitotically (for movie, see additional file). This observation prompted us to look at centrosome number abnormalities in p53<sup>-/-</sup> Clara cells. Centrosomes are essential for the formation of bipolar spindles and the balanced segregation of chromosomes. Defects in shape, size, and number of centrosomes are frequently observed in malignant tumours and are associated with gross genome instability [26,27]. A role of p53 in maintaining centrosome number has been documented previously [7,8].

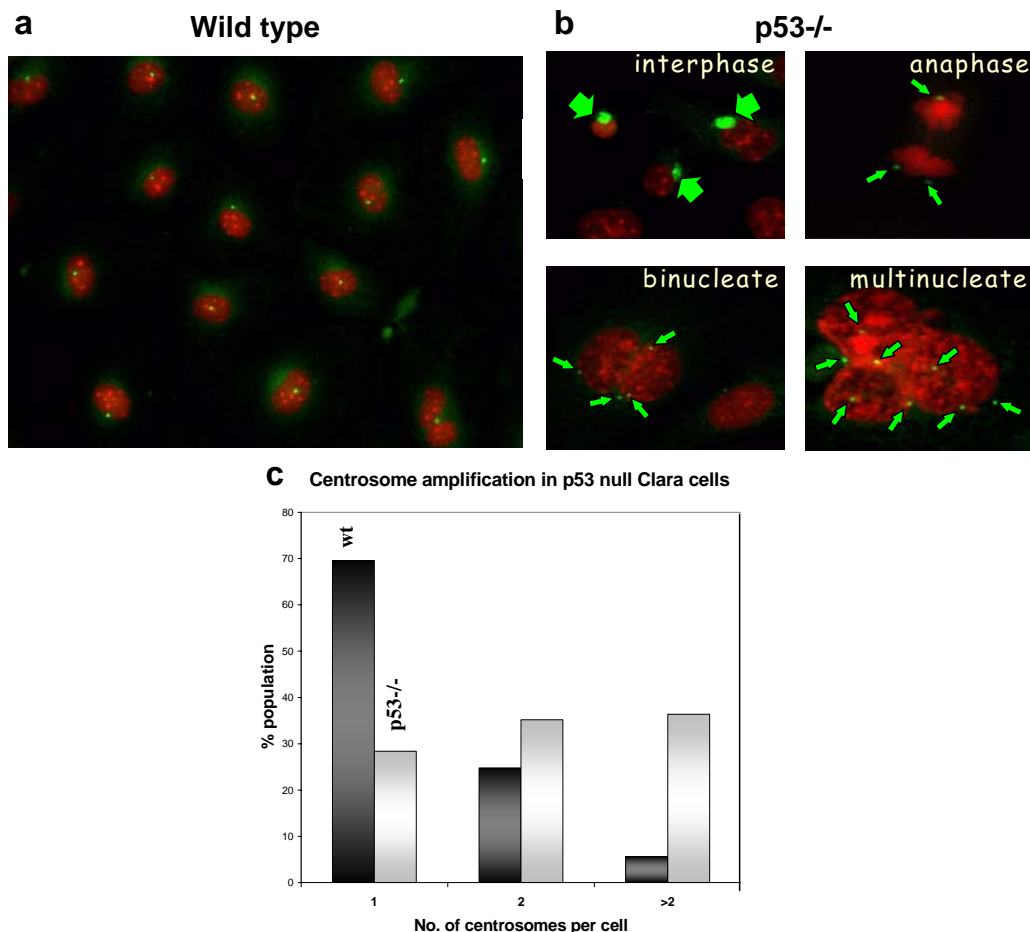
Centrosome abnormalities were assessed by confocal microscopy in Clara cell primary culture. 48 hour-cultured cells were fixed in methanol and immunofluorescently stained for pericentrin, a protein specific to the pericentriolar material surrounding the centrosome. Nuclei were counterstained with propidium iodide. For counting purposes, single punctate spots of pericentrin-stained material were scored as individual centrosomes while clumps of pericentriolar material with multiple foci (>2) were recorded as having greater than two centrosomes. Wild type Clara cells contained predominantly one or two centrosomes juxtaposed to the nucleus (Figure 3a,3c). By contrast, > 40% of p53 null cells contained more than two centrosomes (Figure 3b,3c). The presence of multiple centrosomes and/or excessive pericentriolar material was observed in interphase, mitotic, and multinucleated cells (Figure 3b). Interphase p53<sup>-/-</sup> Clara cells often displayed a cluster of anti-pericentrin staining material, which may represent multiple centrosomes clumped together at a single pole or an inappropriate accumulation of pericentriolar material. Centrosomes in the anaphase stage of mitosis formed two (normal) or more (abnormal) spindle poles in p53<sup>-/-</sup> cultures (Figure 3b), and may highlight one mechanism by which cell division is disturbed in p53<sup>-/-</sup> Clara cells.

#### **Discussion**

In this analysis, the authors sought to identify functions of p53 in proliferating airway epithelial cells. A major finding of this analysis was that Clara cells, deficient in p53, displayed spontaneous multinucleation and the formation of bilobed nuclei in primary culture. This observation highlights a direct influence of p53 on cell division, and may represent a housekeeping function of p53 in the Clara cell. Further, nucleation abnormalities in p53<sup>-/-</sup> cul-

tures correlated with disturbances in centrosome number. Centrosomes ensure spindle polarity and thus correct chromosome segregation during mitosis [28], and their assembly is tightly controlled with the cell cycle [for recent review, see [29]]. Because each daughter cell receives only one centrosome after mitotic division, the centrosome must duplicate during the mitotic cycle of the daughter cell. In considering the similarities between wild type and p53<sup>-/-</sup> Clara cell baseline proliferation rate, it would appear that in p53<sup>-/-</sup> cultures, centrosomes undergo multiple cycles of duplication in a single cell cycle. Similar observations have been reported in p53<sup>-/-</sup> murine embryonic fibroblasts [7], whereby multiple copies of centrosomes are generated from early in G1. The adverse consequence of multiple centrosomes is most prominently seen in mitosis as multipolar spindles, a feature of p53<sup>-/-</sup> Clara cells as documented by time-lapse videomicroscopy (Movie file 1 – see Additional file 1). Such events are likely to impair chromosomal segregation and induce karyotypic instability by failure to form bipolar mitotic spindles. These mitotic effects of p53 deficiency may be relevant to the genetic instability and aneuploidy acquired during lung tumourigenesis in vivo [30].

Multinucleation, although prevalent in p53<sup>-/-</sup> cultures, was additionally a feature of wild type primary cultured Clara cells. Consequently, the propensity to undergo multinucleation would appear a feature of Clara cell primary cultures, and p53 may simply act as an accelerator of this multinucleation. However, the correlations with centrosome number are compelling. Centrosome amplification was a feature in over a third of the cells in 48 hour p53<sup>-/-</sup> cultures (37.5% population) but was only observed in a minority of wild type cells (5% population) (Figure 3c). Further, all the multinucleated cells in p53<sup>-/-</sup> cultures displayed three or more centrosomes, consistent with a critical role of p53 in multinucleation. The number of centrosomes per nuclei varied considerably in individual p53<sup>-/-</sup> cells (Figure 3b), suggestive of a general deregulation of the centrosome cycle in these cultures. It is noteworthy that many of the centrosome amplified cells did not display bilobed or multiple nuclei, but were instead mononucleate. It is feasible that the latter cells attain a state of pseudobipolarity during mitosis, whereby multiple copies of centrosomes may still co-migrate to the poles and ensure proper mitotic segregation [29]. A tenet of this would be that only a proportion of p53-deficient cells with an abnormal centrosome number would display an abnormal chromosome content. An alternative possibility is that a pathological accumulation of pericentriolar material in mononucleate p53<sup>-/-</sup> cells augments centrosome behaviour sufficiently to perturb the formation of bipolar mitotic spindles. Immunohistochemical labelling of p53<sup>-/-</sup> Clara cell cultures with a range of spin-



**Figure 3**  
**Centrosome amplification in p53<sup>-/-</sup> Clara cells** Confocal micrographs of wild type and p53<sup>-/-</sup> Clara cell cultures immunofluorescently labelled with anti-pericentrin (green) and counterstained with propidium iodide (red). **a)** Single centrosomes were predominantly observed in wild type cells. **b)** In p53<sup>-/-</sup> cultures, more than two centrosomes and/or clusters of pericentrin-staining material were frequently observed in interphase, mitotic (anaphase), and multinucleated cells. Top left) Interphase Clara cells displaying clumps of pericentriolar material (thick arrows) and a single nuclei. Top right) Anaphase Clara cell with 3 centrosomes (thin arrows) forming a tripolar spindle. Bottom left) Binucleated Clara cell displaying 4 centrosomes (thin arrows) unevenly distributed between the two nuclei. Bottom right) Multinucleated Clara cell with 3 nuclei and 8 centrosomes (thin arrows). Panel c) exhibits the effects of p53 on centrosome number in 48-hour Clara cell cultures.

dle, centrosomal, and pericentriolar markers may help to clarify this issue.

Effects of DNA damage were additionally characterised in Clara cell primary culture. The authors document that growth arrest, but not apoptosis, is a Clara cell response to ionizing radiation, and is p53-dependent. Loss of cell cycle arrest favours acquisition of mutations and may represent one mechanism by which loss of p53 function facilitates tumourigenesis in vivo. However, the Clara cell radiation response was additionally dependent on extracellular factors – specifically, the addition of serum to the medium was sufficient to abolish the p53-induced growth arrest. Effects of extracellular factors on the p53 response

have likewise been observed in primary cultured murine hepatocytes [6] and human lung cancer cell lines [31], and highlight modulatory effects the tissue microenvironment may impose upon the p53 response in vivo. It should be emphasised that it is currently unclear to what degree cytokines and other growth factors expressed in injured lung (including Oncostatin M, Interleukin-8, Interleukin-1 $\beta$ , TNF- $\alpha$ , TGF- $\beta$ <sub>1</sub>) augment epithelial wound repair and/or the p53 response, especially in the context of hyperplastic/preneoplastic lesions. It is possible that the primary culture method described in this analysis could be used to distinguish the relative importance of growth factors and cytokines in influencing Clara cell behaviour from a genetic standpoint, and thus provide one



method of determining the mechanisms underlying physiological/pathophysiological remodelling in the small airways.

### Conclusions

The effects of p53 deficiency were characterised in short-term primary cultures of murine Clara cells. BrdU incorporation assays were used to measure S phase DNA synthesis kinetics in wild type and p53<sup>-/-</sup> primary Clara cell cultures, and uncovered effects of p53 deficiency in growth control. Specifically, proliferating Clara cell cultures displayed a p53-dependent cell cycle arrest following DNA damage, which was further influenced by extracellular factors such as serum. Multinucleation was an additional feature of p53<sup>-/-</sup> cultures, and highlights a direct role of p53 in cell division in the Clara cell. The mechanistic basis of the multinucleation phenotype is currently unresolved but may reflect a defect in centrosome number, a feature of p53<sup>-/-</sup> Clara cells. The authors additionally wish to emphasise the importance of murine Clara cell primary culture as a powerful method for determining the functional significance of gene deficiency in airway epithelial cells.

### Methods

#### Gene-targeted mice

Generation of mice with a neo cassette inserted into the p53 genomic sequence has been described previously [4]. p53 genotypes were established by a PCR strategy of DNA prepared from tail biopsies of appropriate lines (progeny of Het × Het crosses). Alleles were selectively amplified by using a primer for intron 7 common to both genotypes (CAAAGAGCGTTGGGCATGTG), and primers specific for exon 6 (wild type allele, GTGGTGGTACCTTATGAGCC) and the neo construct (CATCGCCTTCTATCGCCTTC). The mice were housed in plastic cages in a room with a 12 hour day-night cycle and controlled temperature and humidity. They were given a standard diet and water ad libitum.

#### Isolation and culture of murine Clara cells

Mice were sacrificed by intraperitoneal injection of pentobarbitone. Lungs were perfused with saline, digested with trypsin, and Clara cells were isolated and maintained on fibronectin-coated glass chamber slides as described previously [25]. Glass flasks were adapted for use with the Leica videomicroscope via the addition of a glass platform, sandwiched between the chamber flask and videomicroscope moveable platform. Clara cells were maintained in serum-free medium unless otherwise specified.

### Morphology

Clara cell cultures from wild type and p53<sup>-/-</sup> mice were stained with haematoxylin/methyl green and assessed for morphological abnormalities by light microscopy.

#### 5-Bromo-2'-deoxyuridine (BrdU)

Cultures plated onto Lab Tek II Glass chamber slides were exposed to medium containing 40 μM BrdU for 24 hours, after which they were fixed overnight at 4°C in 80% ethanol/PBS. Cells that had incorporated BrdU into DNA were labelled by direct peroxidase immunocytochemistry utilizing the chromogen DAB. Slides were counterstained with haematoxylin and light green, mounted, and coverslipped.

Evaluation of BrdU positivity in primary Clara cell culture was accomplished by AxioHOME microscopy. 500 Clara cells (sufficient to achieve a stable running mean) were counted from at least seven randomly selected fields and the results expressed as a percentage (BrdU labelling index).

#### Clara cell 10 kDa protein (CC10)

Cultures plated onto Lab Tek II Glass chamber slides were fixed overnight at 4°C in 80% ethanol/PBS. Slides were incubated with CC10 rabbit polyclonal IgG (courtesy of S. O'Dea), diluted 1:100 in 20% swine serum/PBS for 1 hour. Slides were washed in PBS and incubated with biotinylated swine anti-rabbit IgG, diluted 1:500 in 20% swine serum/PBS. Avidin-biotin alkaline phosphatase complex (Dako) was the final labeling agent and the chromogen was Vector Blue (Vector Laboratories). Nuclei were Feulgen counterstained, mounted, and coverslipped. Negative controls omitted primary antibody.

#### Pericentrin

Cultures plated onto Lab Tek II chamber slides were fixed in ice-cold methanol for 10 minutes, air-dried, washed in PBS (3 × 5 mins), and blocked in 3% Bovine Serum Albumin in PBS. Slides were incubated with rabbit anti-pericentrin IgG (BAbCO), diluted 1:100 in 3% BSA/PBS, overnight at 4°C. Slides were washed in PBS (3 × 5 mins) and incubated with FITC-conjugated swine anti-rabbit secondary antibody (Dako), diluted 1:20 in 3% BSA/PBS, for 1 hour at room temperature. Nuclei were counterstained with propidium iodide, mounted, and coverslipped. Staining was visualised by confocal microscopy.

Evaluation of centrosome number was accomplished by confocal microscopy. 300 Clara cells (sufficient to achieve a stable running mean) were counted from five high power randomly selected fields and the results expressed as a percentage.

### Irradiation

After 48 hours in culture, Clara cells were 5 Gray  $\gamma$ -irradiated by a Cs-137 source at 33 Gy/minute. Unirradiated controls were otherwise transported and handled identically.

### Time-lapse videomicroscopy

Cultures plated onto glass chamber flasks were subjected to time-lapse videomicroscopy for a period of 24 hours. Cultures were gassed with 5% CO<sub>2</sub>/Air prior to their insertion onto the videomicroscope moveable platform (Leica). Cultures and microscope apparatus were maintained at 37°C throughout the analysis. Digital images were taken from 5 fields per flask every 15 minutes with the videomicroscope (Leica) and associated software (QUIPS, Leica). Images pooled from the resultant succession of TIFF files (Microsoft) were converted to GIF files (Microsoft) for video analysis (GIF animator, Microsoft). Videos were analysed blind for abnormal mitosis and cytokinesis events.

### Authors' contributions

CJA carried out the cell culture studies and the immunoassays (CC10, BrdU, pericentrin), performed the statistical analysis, and drafted the manuscript. SO developed the primary Clara cell culture method and participated in the design of the study. ARC coordinated analysis of the radiation response, and participated in the design of the study. DJH conceived of the study, and participated in both its design and coordination.

### Additional material

#### Additional file 1

Movie demonstrating mitosis abnormalities in p53<sup>-/-</sup> Clara cells Clara cells isolated and cultured from gene-targeted mice germline deficient in p53 display cell division abnormalities whereby nuclei fail to segregate mitotically during the final stage of the cell cycle. Spontaneous binucleation and the formation of multiple spindle poles in these cultures highlight functions of wild type p53 in the formation of bipolar spindles. Movie is stored in a Flash (.swf) format, and can be accessed with Flash, QuickTime, Netscape, and Internet Explorer. The additional file can alternatively be accessed via the following website: [http://www.ed.ac.uk/pathology/Research/Research\\_Interests/Chris\\_armit/clara.htm](http://www.ed.ac.uk/pathology/Research/Research_Interests/Chris_armit/clara.htm).

Click here for file

[<http://www.biomedcentral.com/content/supplementary/1471-2121-3-27-S1.swf>]

### Acknowledgements

This work was funded by the Norman Salvesen Emphysema Trust.

### References

- Lane DP: **Cancer. p53, guardian of the genome.** *Nature* 1992, **358**:15-16

- Harvey M, McArthur MJ, Montgomery CAJ, Bradley A, Donehower LA: **Genetic background alters the spectrum of tumors that develop in p53-deficient mice.** *FASEB J* 1993, **7**:938-943
- Lee JM, Abrahamson JL, Kandel R, Donehower LA, Bernstein A: **Susceptibility to radiation-carcinogenesis and accumulation of chromosomal breakage in p53 deficient mice.** *Oncogene* 1994, **9**:3731-3736
- Clarke AR, Purdie CA, Harrison DJ, Morris RG, Bird CC, Hooper ML, Wyllie AH: **Thymocyte apoptosis induced by p53-dependent and independent pathways.** *Nature* 1993, **362**:849-852
- Clarke AR, Gledhill S, Hooper ML, Bird CC, Wyllie AH: **p53 dependence of early apoptotic and proliferative responses within the mouse intestinal epithelium following gamma-irradiation.** *Oncogene* 1994, **9**:1767-1773
- Bellamy CO, Clarke AR, Wyllie AH, Harrison DJ: **p53 Deficiency in liver reduces local control of survival and proliferation, but does not affect apoptosis after DNA damage.** *FASEB J* 1997, **11**:591-599
- Fukasawa K, Choi T, Kuriyama R, Rulong S, Vande Woude GF: **Abnormal centrosome amplification in the absence of p53.** *Science* 1996, **271**:1744-1747
- Fukasawa K, Wiener F, Vande Woude GF, Mai S: **Genomic instability and apoptosis are frequent in p53 deficient young mice.** *Oncogene* 1997, **15**:1295-1302
- Duesberg P: **Are centrosomes or aneuploidy the key to cancer?** *Science* 1999, **264**:2091-2092
- Duesberg P, Li R, Rasnick D, Rausch C, Willer A, Kraemer A, Yerganian G, Hehlmann R: **Aneuploidy precedes and segregates with chemical carcinogenesis.** *Cancer Genet Cytogenet* 2000, **119**:83-93
- Plopper CG, Hyde DM, Buckpitt AR: **Clara Cells In The Lung: Scientific Foundations** (Edited by: Crystal RG, West JB, Weibel ER, Barnes PJ) Lippencott-Raven, Philadelphia 1997, 517-534
- Plopper CG, Dungworth DL: **Structure, function, cell injury and renewal of bronchiolar and alveolar epithelium.** *In Lung carcinoma* (Edited by: Mc Dowell EM) Churchill and Livingstone, London 1987, 29-44
- Evans MJ, Johnson LV, Stephens RJ, Freeman G: **Renewal of the terminal bronchiolar epithelium in the rat following exposure to NO<sub>2</sub> or O<sub>3</sub>.** *Lab Invest* 1976, **35**:246-257
- Brody AR, Hook GE, Cameron GS, Jetten AM, Butterick CJ, Nettesheim P: **The differentiation capacity of Clara cells isolated from the lungs of rabbits.** *Lab Invest* 1987, **57**:219-229
- Hook GE, Brody AR, Cameron GS, Jetten AM, Gilmore LB, Nettesheim P: **Repopulation of denuded tracheas by Clara cells isolated from the lungs of rabbits.** *Exp Lung Res* 1987, **12**:311-329
- Massaro GD, Singh G, Mason R, Plopper CG, Malkinson AM, Gail DB: **Biology of the Clara cell.** *Am J Physiol* 1994, **266**:L101-L106
- Plopper CG, Mariassy AT, Hill LH: **Ultrastructure of the nonciliated bronchiolar epithelial (Clara) cell of mammalian lung: I. A comparison of rabbit, guinea pig, rat, hamster, and mouse.** *Exp Lung Res* 1980, **1**:139-154
- Plopper CG, Hill LH, Mariassy AT: **Ultrastructure of the nonciliated bronchiolar epithelial (Clara) cell of mammalian lung. II. A comparison of horse, steer, sheep, dog, and cat.** *Exp Lung Res* 1980, **1**:155-169
- Plopper CG, Hill LH, Mariassy AT: **Ultrastructure of the nonciliated bronchiolar epithelial (Clara) cell of mammalian lung. III. A study of man with comparison of 15 mammalian species.** *Exp Lung Res* 1980, **1**:171-180
- Widdicombe JG, Pack RJ: **The Clara cell.** *Eur J Respir Dis* 1982, **63**:202-220
- Harkema JR, Mariassy A, St. George J, Hyde DM, Plopper CG: **Epithelial cells of the conducting airways: A species comparison.** *In The airway epithelium* (Edited by: Falmer SG, May DWP) Marcel Dekker, New York 1991, 3-39
- Boers JE, Ambergen AW, Thunnissen FB: **Number and proliferation of clara cells in normal human airway epithelium.** *Am J Respir Crit Care Med* 1999, **159**:1585-1591
- Wikkenheiser KA, Clark JC, Linnoila RI, Stahlman MT, Whitsett JA: **Simian virus 40 large T antigen directed by transcriptional elements of the human surfactant protein C gene produces pulmonary adenocarcinomas in transgenic mice.** *Cancer Res* 1992, **52**:5342-5352
- Kitamura H, Kameda Y, Nakamura N, Nakatani Y, Inayama Y, Iida M, Noda K, Ogawa N, Shibagaki T, Kanisawa M: **Proliferative potential and p53 overexpression in precursor and early stage le-**



- sions of bronchioloalveolar lung carcinoma. *Am J Pathol* 1995, **146**:876-887
25. Kitamura H, Kameda Y, Nakamura N, Inayama Y, Nakatani Y, Shibagaki T, Ito T, Hayashi H, Kimura H, Kanisawa M: **Atypical adenomatous hyperplasia and bronchoalveolar lung carcinoma. Analysis by morphometry and the expressions of p53 and carcinoembryonic antigen [see comments].** *Am J Surg Pathol* 1996, **20**:553-562
  26. Masek L, Richards RJ: **Interactions between paraquat, endogenous lung amines' antioxidants and isolated mouse Clara cells.** *Toxicology* 1990, **63**:315-326
  27. McBride S, Tatrai E, Blundell R, Kovacikova Z, Cardozo L, Adamis Z, Smith T, Harrison D: **Characterisation of lectin binding patterns of mouse bronchiolar and rat alveolar epithelial cells in culture.** *Histochem J* 2000, **32**:33-40
  28. Pihan GA, Purohit A, Wallace J, Knecht H, Woda B, Quesenberry P, Doxsey SJ: **Centrosome defects and genetic instability in malignant tumors.** *Cancer Res* 1998, **58**:3974-3985
  29. Lingle WL, Lutz WH, Ingle JN, Maihle NJ, Salisbury JL: **Centrosome hypertrophy in human breast tumors: implications for genomic stability and cell polarity.** *Proc Natl Acad Sci U S A* 1998, **95**:2950-2955
  30. Hyman AA: **Centrosomes. Sic transit gloria centri.** *Curr Biol* 2000, **10**:R276-278
  31. Tarapore P, Fukasawa K: **p53 mutation and mitotic infidelity.** *Cancer Invest* 2000, **18**:148-155
  32. Haruki N, Harano T, Masuda A, Kiyono T, Takahashi T, Tatematsu Y, Shimizu S, Mitsudomi T, Konishi H, Osada H, Fuji Y, Takahashi T: **Persistent increase in chromosome instability in lung cancer: possible indirect involvement of p53 inactivation.** *Am J Pathol* 2001, **159**:1345-1352
  33. Kannan K, Amariglio N, Rechavi G, Givol D: **Profile of gene expression regulated by induced p53: connection to the TGF-beta family.** *FEBS Lett* 2000, **470**:77-82

Publish with **BioMed Central** and every scientist can read your work free of charge

"BioMed Central will be the most significant development for disseminating the results of biomedical research in our lifetime."

Sir Paul Nurse, Cancer Research UK

Your research papers will be:

- available free of charge to the entire biomedical community
- peer reviewed and published immediately upon acceptance
- cited in PubMed and archived on PubMed Central
- yours — you keep the copyright

Submit your manuscript here:

[http://www.biomedcentral.com/info/publishing\\_adv.asp](http://www.biomedcentral.com/info/publishing_adv.asp)

