

Multimedia Appendix 1: High-resolution versions of Figures 2-9

Figure 2: Joinpoint Regression of Age Standardized Incidence Rate (ASIR) of colorectal, colon and rectal cancer

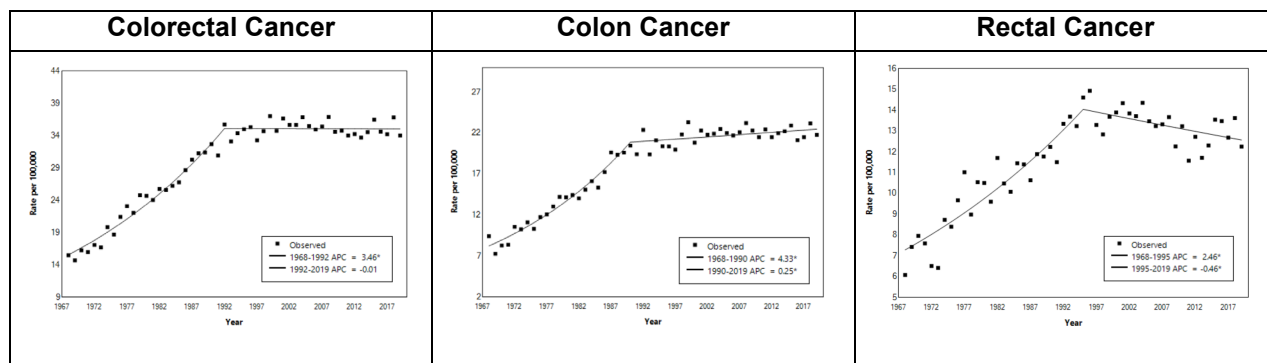


Figure 3: Joinpoint Regression of Age Specific Incidence Rate (ASR) of colorectal, colon and rectal cancer by age group & tumour location

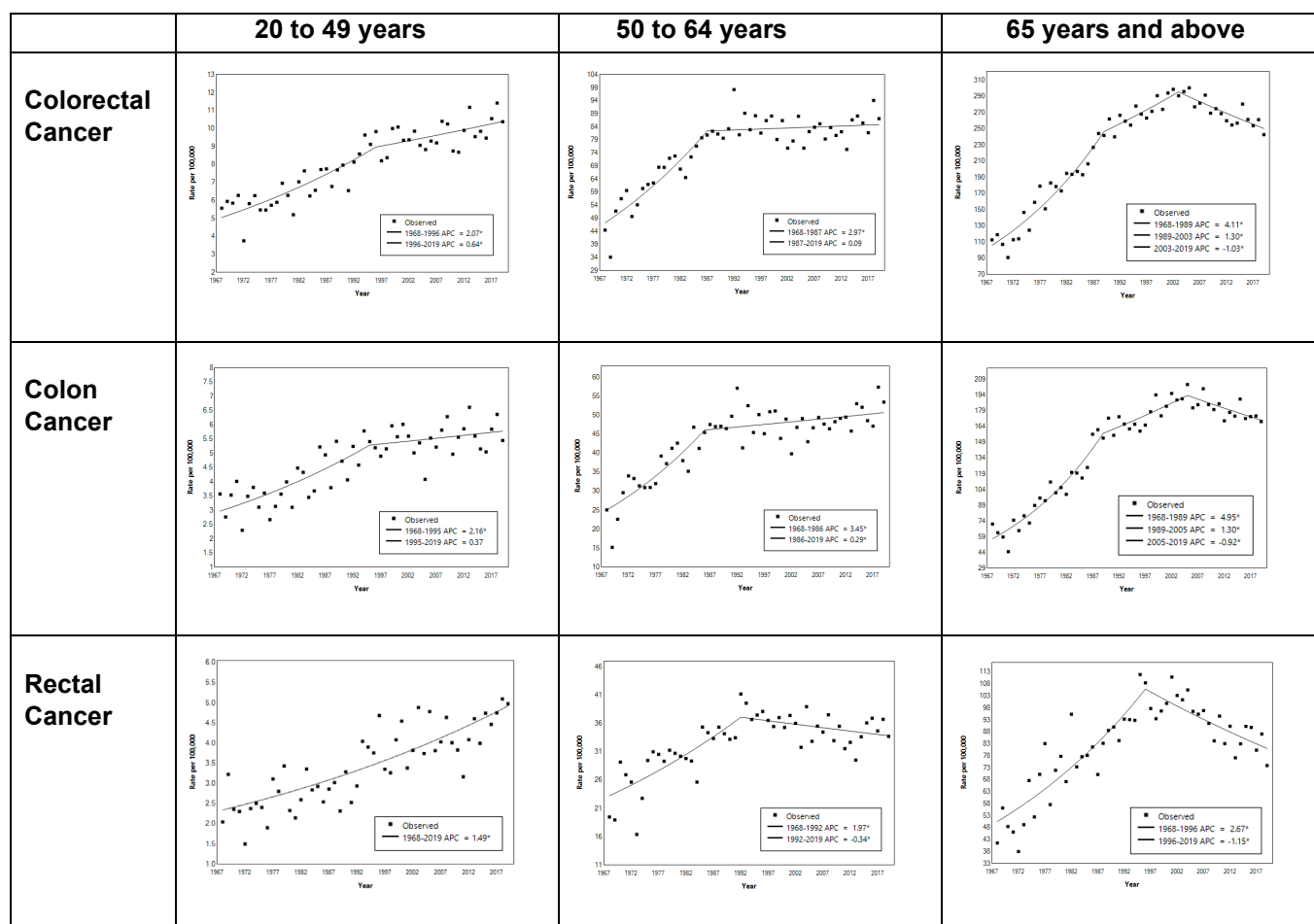


Figure 4: Joinpoint Regression of Age Standardized Incidence Rate (ASIR) of colorectal, colon and rectal cancer by gender (Male – Red, Female – Blue)

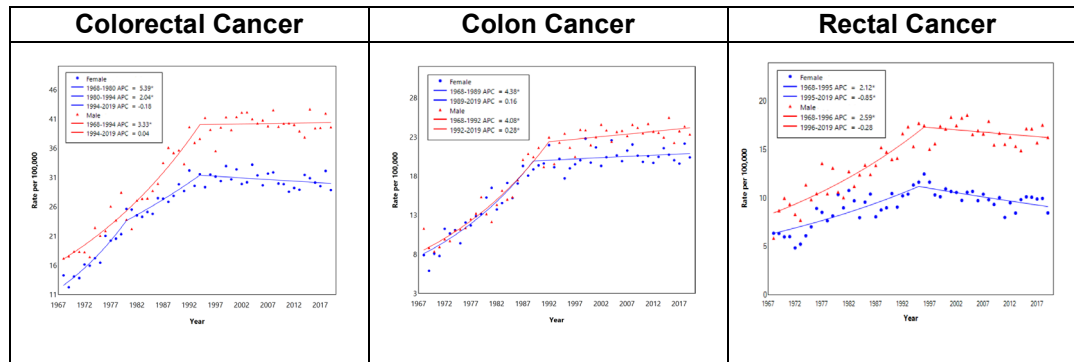


Figure 5: Joinpoint Regression of Age Specific Incidence Rate (ASR) of colorectal cancer, colon and rectal cancer by age groups and gender (Male – Red, Female – Blue)

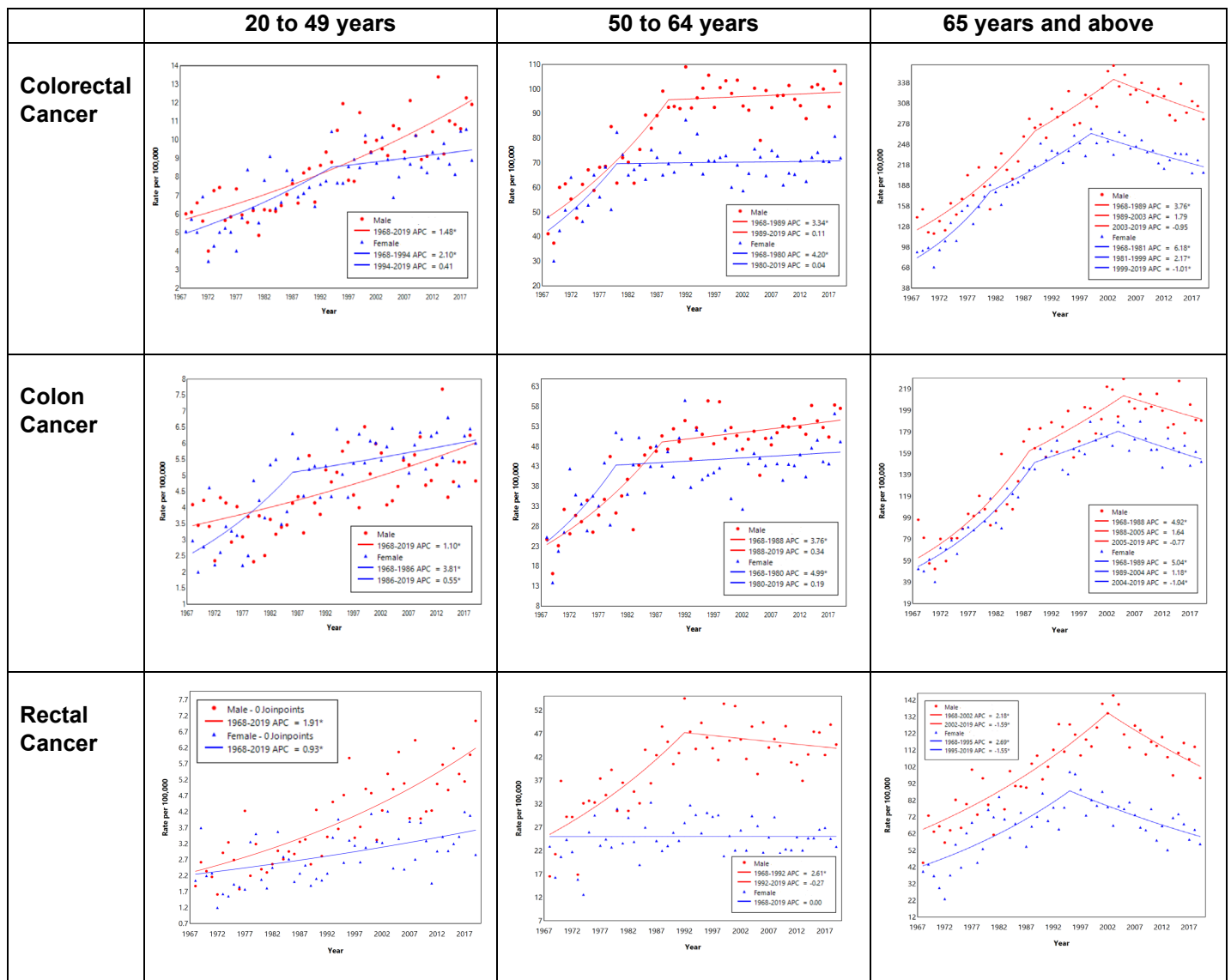


Figure 6: Joinpoint Regression of Age Standardized Incidence Rate (ASIR) of colorectal, colon and rectal cancer by ethnic groups (Chinese -- Blue, Indian -- Green, Malay -- Red)

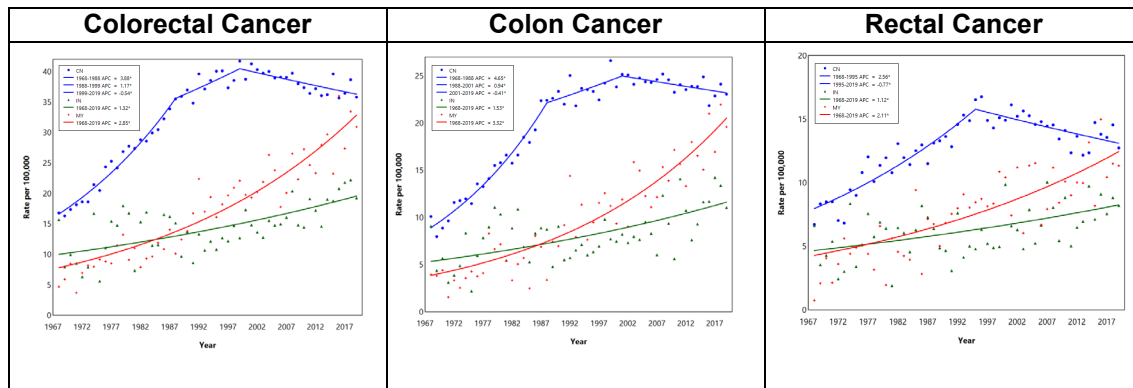


Figure 7: Joinpoint Regression of Age Specific Incidence Rate (ASR) of colorectal, colon and rectal cancer by age group, tumour location & ethnicity (Chinese/ CN-- Blue, Indian/ IN-- Green, Malay/ MY - Red)

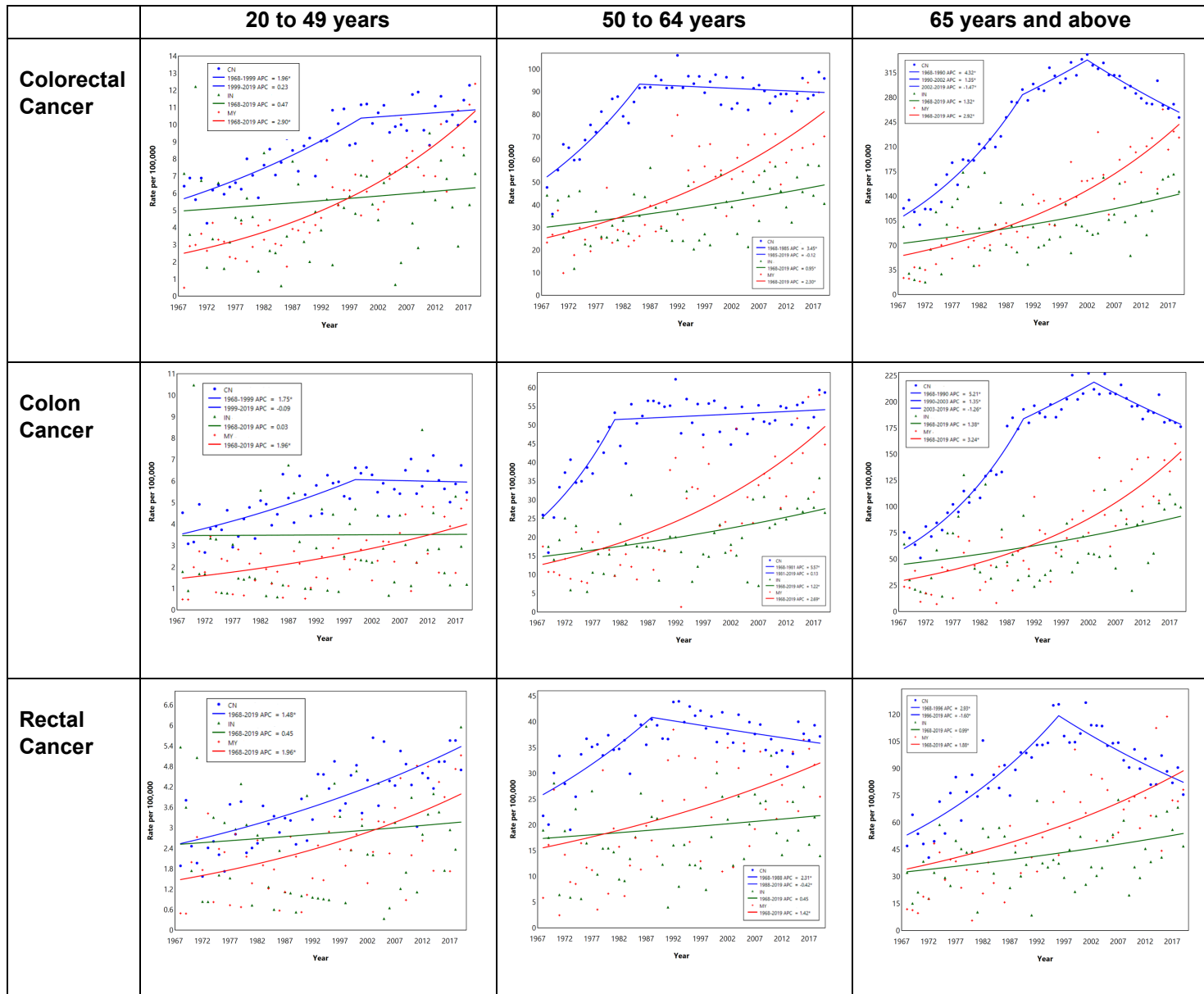


Figure 8: The incidence rate ratios (IRRs) by birth cohort for colorectal, colon and rectal cancers.

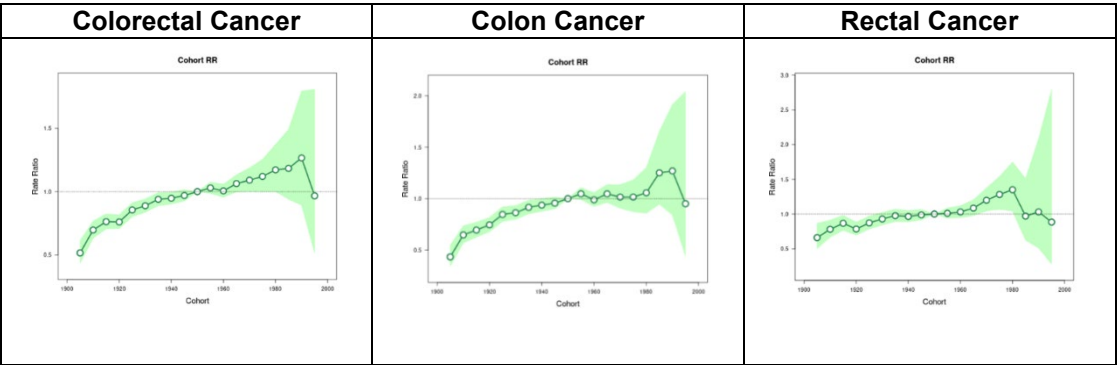


Figure 9: The age-specific APC (local drift) for colorectal, colon and rectal cancer

