



OPEN

## Continuous stimulation of dual-function peptide PGLP-1-VP inhibits the morbidity and mortality of NOD mice through anti-inflammation and immunoregulation

Huashan Gao<sup>1,2,4</sup>, Qian Zhao<sup>1,3,4</sup>, Shanshan Tang<sup>1</sup>, Kaiying Li<sup>1</sup>, Fujian Qin<sup>1</sup>, Ziwei Song<sup>1</sup>, Yi Pan<sup>1</sup>, Liang Jin<sup>1</sup>✉ & Yanfeng Zhang<sup>1</sup>✉

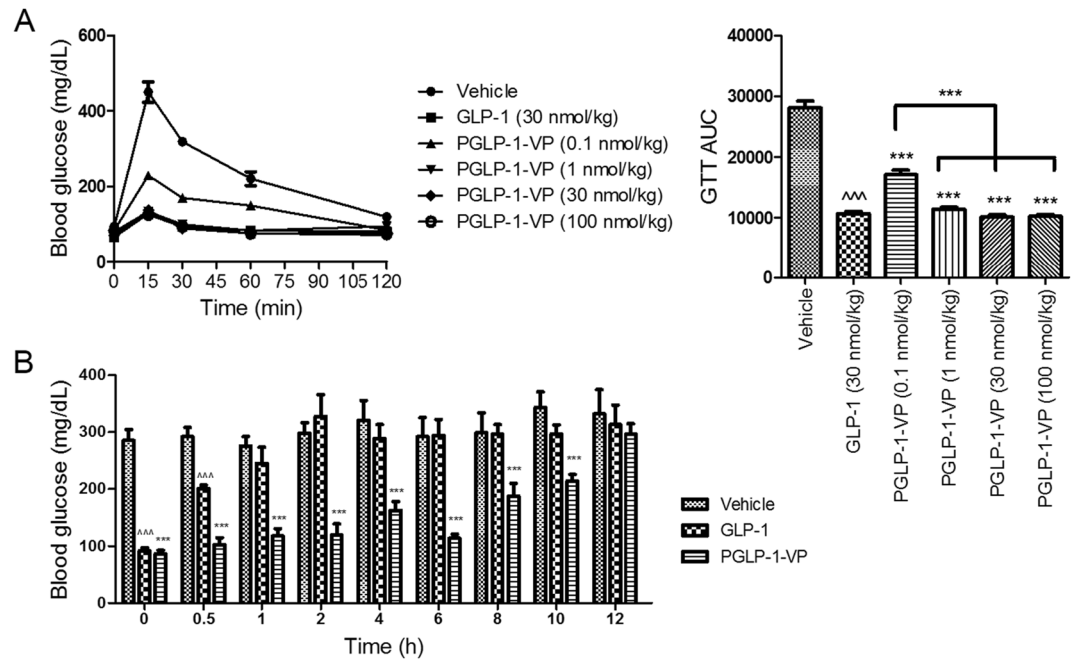
Multiple animal and human studies have shown that administration of GLP-1RA can enhance  $\beta$ -cell recovery, reduce insulin dosage, reduce HbA1c content in the blood, reduce the risk of hypoglycemia and reduce inflammation. In the NOD mouse model, peptide VP treatment can prevent and treat type 1 diabetes through immunomodulation. Therefore, we designed a new dual-functional PGLP-1-VP, which is expected to combine the anti-inflammatory effect of PGLP-1 and the immunomodulatory effect of VP peptide. In streptozotocin-induced hyperglycemic mice model, we demonstrated that PGLP-1-VP can act as a GLP-1R agonist to improve hyperglycemia and increase insulin sensitivity. In the NOD mouse model, PGLP-1-VP treatment reduced morbidity, mortality, and pancreatic inflammation, and showed superior effect to PGLP-1 or VP treatment alone, confirming that PGLP-1-VP may act as a dual-function peptide. PGLP-1-VP provided immunomodulatory effect through increasing Th2 cell percentage and balancing the ratio of Th2/Th1 in spleen and PLN, similar to P277 and VP. Additionally, PGLP-1-VP and PGLP-1 act the anti-inflammation by increasing Treg cells and TGF- $\beta$ 1 content like DPP-IV inhibitor. Taken together, our data shows that the dual-functional PGLP-1-VP reduces morbidity and mortality in the NOD model, suggesting a potential role in preventing and treating type 1 diabetes.

### Abbreviations

GLP-1	Glucagon-like peptide-1
GLP-1R	Glucagon-like peptide-1 receptor
GLP-1RA	Glucagon-like peptide-1 receptor agonists
HbA1c	Glycosylated hemoglobin A1c
NOD mouse	Nonobese diabetic mouse
peptide VP	A ameliorated atherogenic side-effects P277 peptide
PGLP-1	A GLP-1 analogue
Th1 cell	T helper 1 cell
Th2 cell	T helper 2 cell
PLN	Pancreatic lymph node
STZ	Streptozotocin
DPP-IV	Dipeptidyl peptidase IV
HEK-293	Human embryonic kidney 293
IPGTT	Intraperitoneal glucose tolerance test

<sup>1</sup>State Key Laboratory of Natural Medicines, Jiangsu Key Laboratory of Drug Screening, School of Life Science and Technology, China Pharmaceutical University, Nanjing, China. <sup>2</sup>College of Medicine, Pingdingshan University, Pingdingshan, China. <sup>3</sup>Sanquan College of Xinxiang Medical University, Xinxiang, Henan, China. <sup>4</sup>These authors contributed equally: Huashan Gao and Qian Zhao. ✉email: ljstemcell@cpu.edu.cn; zyf\_3456@163.com





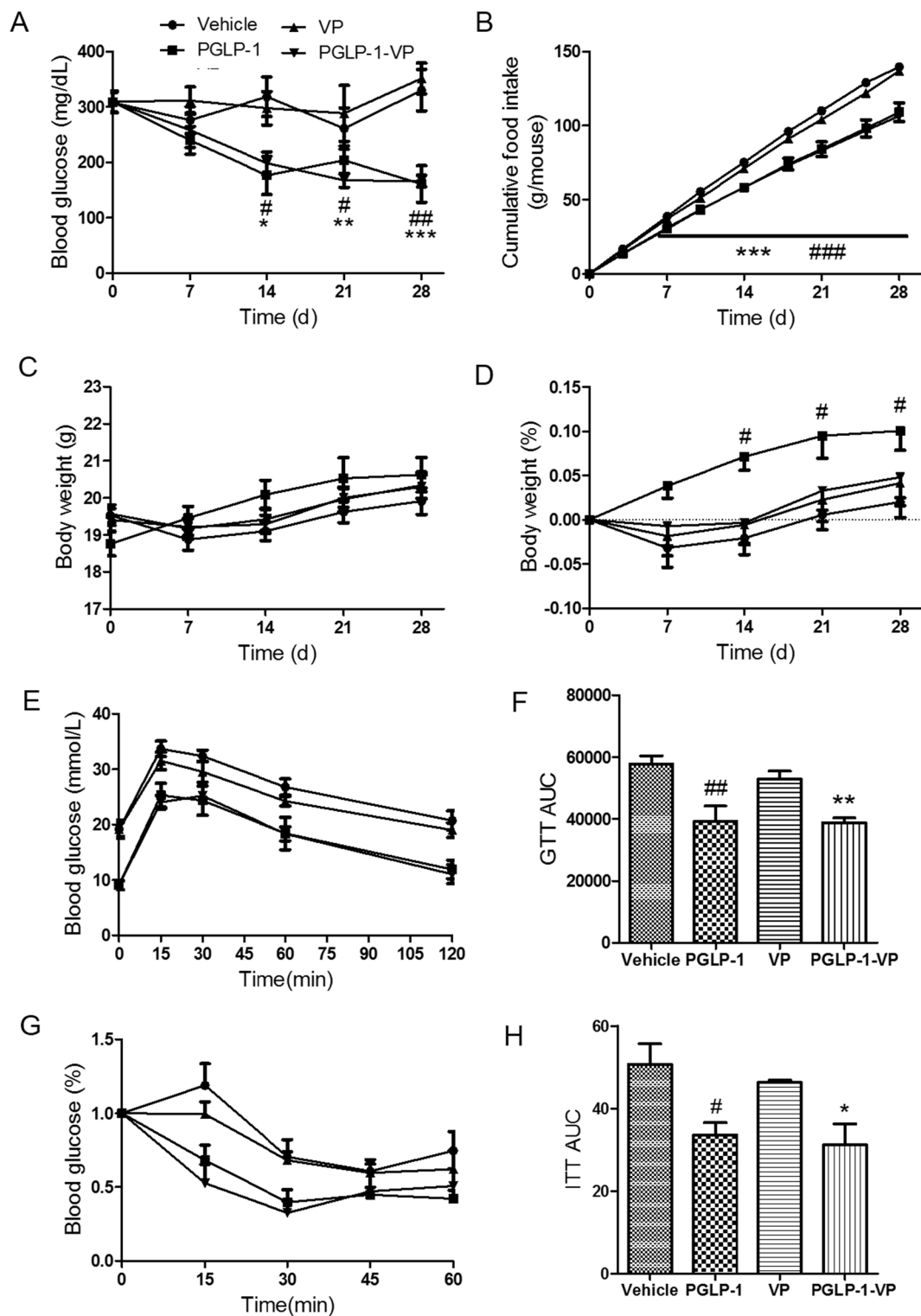
**Figure 2.** Acute and sustained glucose-lowering effect of GLP-1 or PGLP-1-VP in male C57BL/6J mice (age 8 weeks;  $n=6$  mice per group). **(A)** Intraperitoneal glucose tolerance test (IPGTT) following a single injection of placebo (Vehicle, PBS), GLP-1 (30 nmol/kg) or PGLP-1-VP (0.1, 1, 30, 100 nmol/kg). **(B)** Blood glucose levels (during an IPGTT, time = 15 min) at different times after subcutaneous administration of placebo (Vehicle, PBS), GLP-1 (30 nmol/kg) or PGLP-1-VP (30 nmol/kg).  $***p < 0.001$ , PGLP-1-VP compared with vehicle.  $^{***}p < 0.001$ , GLP-1 compared with vehicle. *GTT* glucose tolerance test, *AUC* area under the concentration time curve.

*in vivo* through acute glucose-lowering effect in normal C57BL/6J mice. Subcutaneous injection of 30 nmol/kg of either PGLP-1-VP or GLP-1 both decreased blood glucose and had similar glucose tolerance test area under the curve (GTT AUC) (Fig. 2A). Subcutaneous injection of PGLP-1-VP at 0.1, 1, 30 or 100 nmol/kg also demonstrated dose-dependent glucose-lowering effect *in vivo* and the minimum effective concentration was 0.1 nmol/kg (Fig. 2A). These results showed that PGLP-1-VP was able to activate GLP-1R and decrease blood glucose *in vivo*.

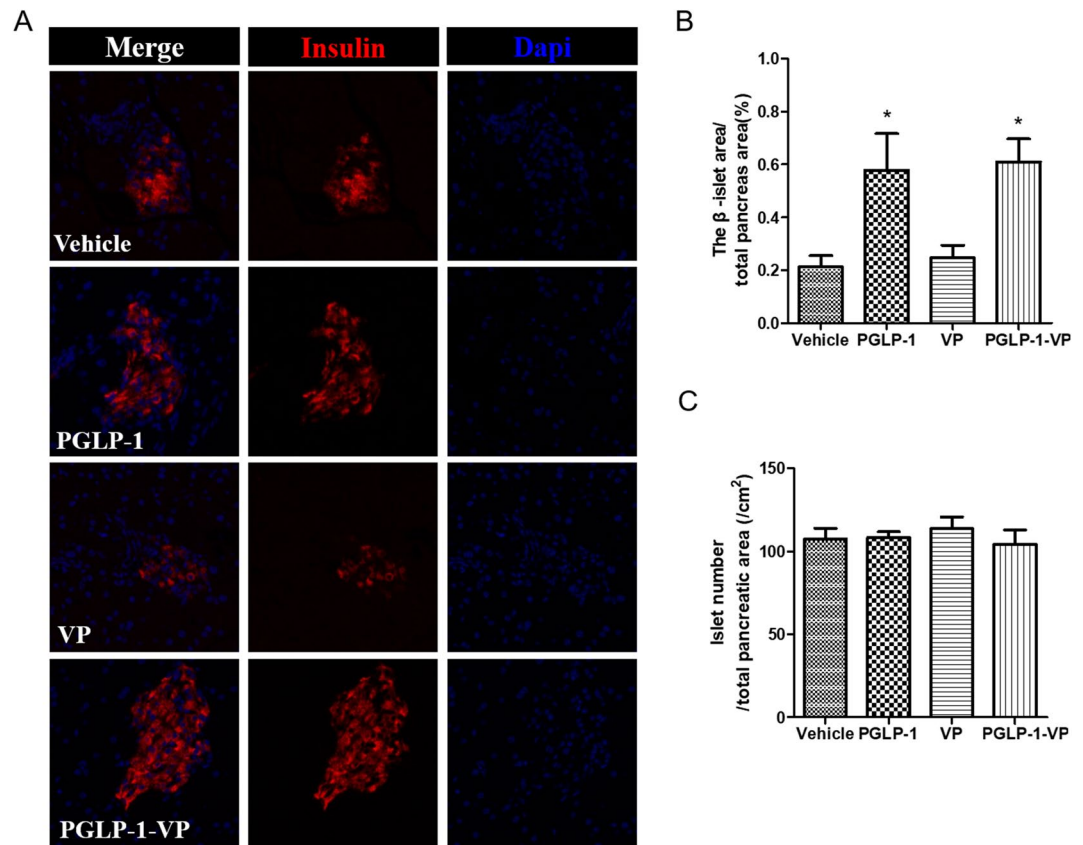
To evaluate whether PGLP-1-VP had persistent glucose-lowering effect *in vivo*, a single dose of GLP-1 (30 nmol/kg), PGLP-1-VP (30 nmol/kg) or placebo was subcutaneously administered, and the blood glucose was measured at pre-determined time intervals. The glucose-lowering effect of PGLP-1-VP was still evident 10 h after administration (Fig. 2B). In contrast, the glucose-lowering effect of native GLP-1 lasted less than 1 h, confirming that PGLP-1-VP was able to work as a long-acting GLP-1R agonist to reduce blood glucose.

**PGLP-1-VP ameliorates STZ-induced hyperglycemia and improves insulin sensitivity.** STZ-induced hyperglycemic mice were treated with placebo, PGLP-1, VP or PGLP-1-VP for 4 weeks. After 2 weeks of treatment, both PGLP-1-VP and PGLP-1 significantly decreased fasting blood glucose compared with vehicle group ( $p < 0.05$ ). After 4 weeks, fasting blood glucose of PGLP-1-VP and PGLP-1 were less than 200 mg/dL, respectively, 166 mg/dL and 160 mg/dL (PGLP-1-VP:  $p < 0.001$ ; PGLP-1:  $p < 0.01$ , compared with vehicle group) (Fig. 3A). Both PGLP-1-VP and PGLP-1 administration also significantly reduced food intake starting from the second week (PGLP-1-VP or PGLP-1:  $p < 0.001$ , compared with vehicle group) (Fig. 3B). However, PGLP-1-VP treatment did not prevent body weight loss, which was significantly inhibited by PGLP-1 treatment (Fig. 3C,D). VP treatment did not decrease fasting blood glucose, inhibit food intake, or inhibit body weight loss compared with vehicle group.

Because PGLP-1 treatment can also significantly improve insulin sensitivity<sup>35</sup>, we next examined whether PGLP-1-VP treatment had a similar function. PGLP-1-VP treatment significantly improve glucose and insulin tolerance in STZ-induced hyperglycemic mice (Fig. 3E–H). GTT AUC showed that both PGLP-1 and PGLP-1-VP had smaller AUC compared with vehicle group (PGLP-1 or PGLP-1-VP:  $p < 0.01$ , compared with vehicle group) (Fig. 3F). PGLP-1 and PGLP-1-VP also had a smaller insulin tolerance test area under the curve (ITT AUC) compared with vehicle group (PGLP-1 or PGLP-1-VP:  $p < 0.05$ , compared with vehicle group) (Fig. 3H). There was no significant difference between PGLP-1 and PGLP-1-VP. VP treatment did not improve insulin sensitivity. All these data indicated that PGLP-1-VP, as a long GLP-1R agonist, was able to decrease fasting blood glucose, inhibit food intake and improve insulin sensitivity in STZ-induced hyperglycemic mice.



**Figure 3.** Chronic effect of PGLP-1, VP and PGLP-1-VP on blood glucose, food intake and body weight after 4 weeks treatment. Subcutaneous treatment with PGLP-1, VP, PGLP-1-VP or placebo ( $2 \times 30$  nmol/kg/day) in STZ-induced hyperglycemic mice ( $n = 10$  mice per group). (A) Weekly measurements of fasted blood glucose. (B) Cumulative food intake. Weekly fasted body weight (C),  $\Delta$ body weight (D). (E,F) Week 4, Glucose tolerance tests (GTT) and area under the curve (AUC) evaluation. (G,H) Insulin tolerance tests (ITT) normalized for basal BG and area under the curve (AUC) evaluation. \* $p < 0.05$ , \*\* $p < 0.01$  and \*\*\* $p < 0.001$ , PGLP-1-VP compared with vehicle. # $p < 0.05$ , ## $p < 0.01$ , PGLP-1 compared with vehicle.

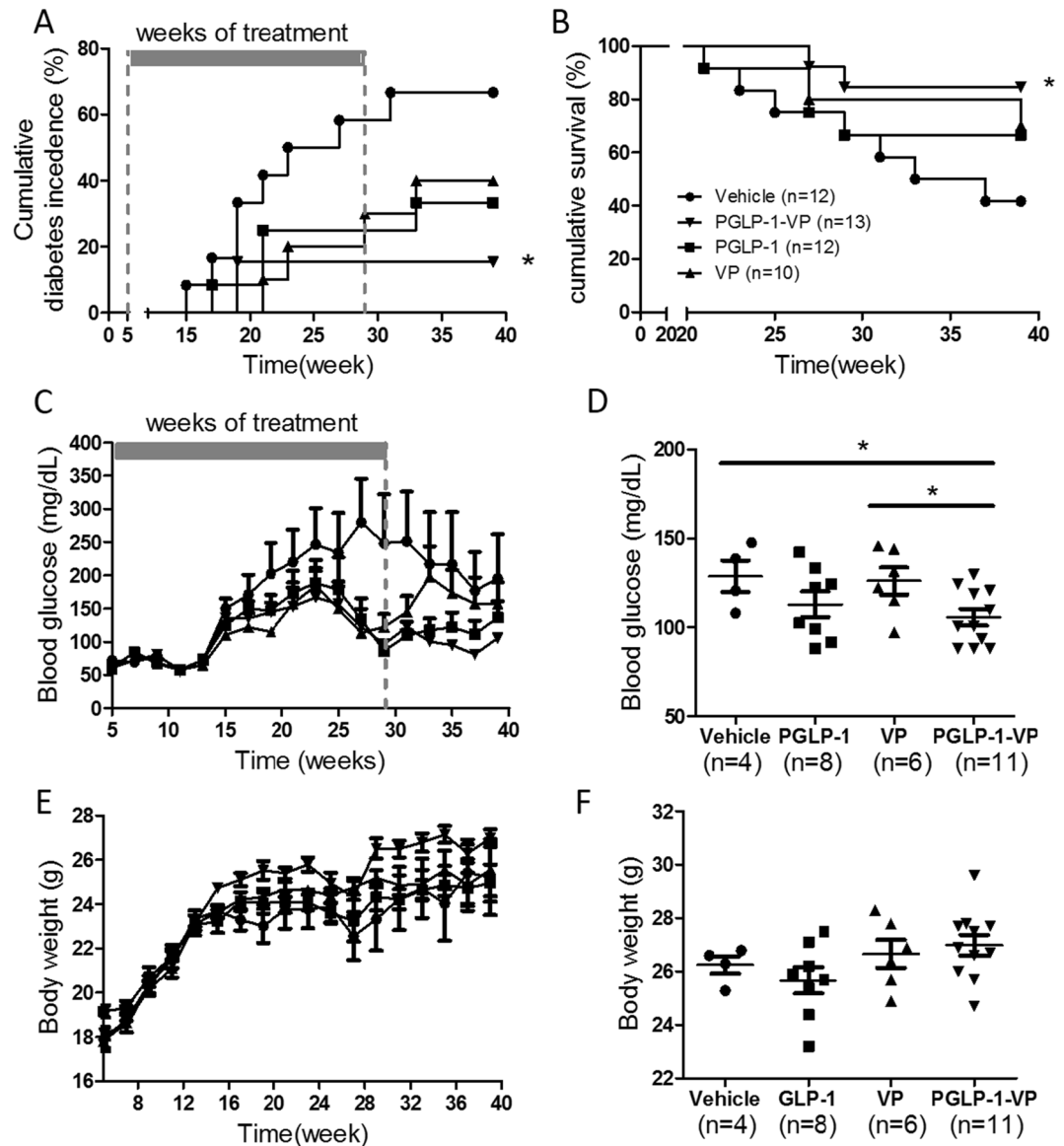


**Figure 4.** Pancreatic immunoassay in hyperglycemic C57BL/6J mice after 5-week treatment. (A) Pancreatic  $\beta$ -cell immunostaining; (B) analysis of  $\beta$ -cell area in pancreas (10/10); and (C) analysis of islet number in the pancreas.

**PGLP-1-VP treatment increases  $\beta$ -cell area.** GLP-1 can increase  $\beta$ -cell mass by stimulating  $\beta$ -cell proliferation and inhibiting apoptosis<sup>14,15</sup>. In order to assess whether  $\beta$ -cell mass increased, insulin immunofluorescence staining was performed. The results revealed that pancreatic islets  $\beta$ -cells of the Vehicle and VP group was significantly decreased compared to the PGLP-1 and PGLP-1-VP groups (Fig. 4a). Islet  $\beta$ -cells immunofluorescence analysis showed that  $\beta$ -cells area was increased by twofold in the PGLP-1 and PGLP-1-VP groups compared with the Vehicle and VP group (Fig. 4b). There was no significant difference in the total number of islets between the groups (Fig. 4c).

**PGLP-1-VP treatment reduces morbidity and mortality in NOD Mice.** Although PGLP-1-VP treatment was able to decrease fasting blood glucose in STZ-induced hyperglycemic mice, the effect of PGLP-1 in the NOD model is unknown. We therefore gave 5 week old female NOD mice with administration of either placebo, PGLP-1, VP or PGLP-1-VP for 24 weeks, and continued observation for up to 39 weeks. In the placebo group, NOD mice began to develop diabetes at 15 weeks; at the end of the observation period, the cumulative incidence of diabetes was 75% (Fig. 5A). The cumulative incidence rate of diabetes PGLP-1 or VP alone was 33% and 40%, respectively, with the onset of diabetes occurring later than Vehicle, at 17 and 21 weeks, respectively. Thus, PGLP-1 or VP alone appeared to delay or prevent the onset of diabetes. The treatment of PGLP-1-VP further reduced the cumulative incidence rate of diabetes to 15% ( $p=0.0107$ , compared with vehicle) (Fig. 5B), with an onset time of diabetes at 19 weeks. We conducted the same experiment with 10-week-old NOD mice and obtained the expected results (Supplementary Fig. 1). Combined, these data suggested that PGLP-1-VP was able to dramatically inhibit the development of diabetes, while modestly delaying the onset for mice that do develop diabetes.

After 24 weeks of treatment, mice were observed for another 10 weeks. PGLP-1-VP recipients did not develop new cases of diabetes, while PGLP-1 or VP groups did (Fig. 5A). This suggests that PGLP-1-VP treatment may continue to inhibit the onset of diabetes. Additionally, glycemia values of group PGLP-1-VP remained at a low level starting from 29 weeks (Stop administration from this week). At week 39, glycemia values of group PGLP-1-VP was significantly lower than surviving control and VP group ( $p < 0.05$ ) (Fig. 5C,D). Body weights were not affected by PGLP-1, VP or PGLP-1-VP treatments compared to controls (Fig. 5E,F).

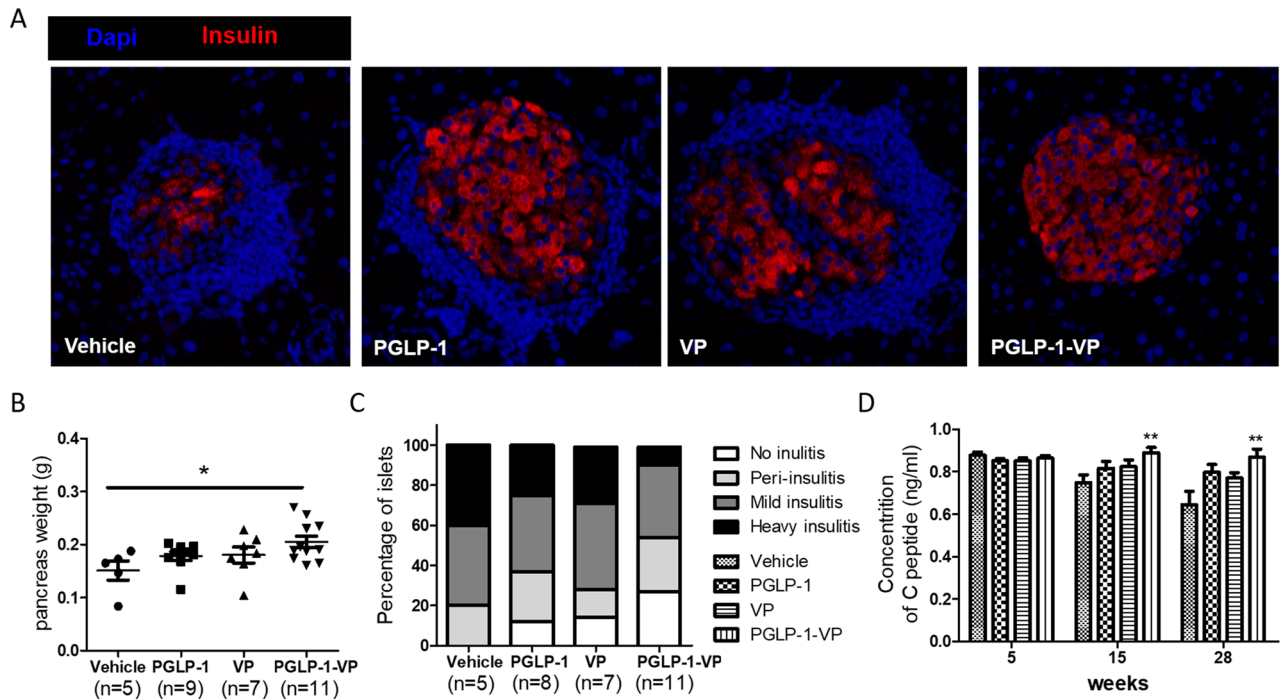


**Figure 5.** PGLP-1-VP treatment reduces morbidity and mortality in NOD mice. Cumulative incidence of diabetes (A) and cumulative survival rate (B) after 39 weeks of observation. Average blood glucose (C) and body weight (E) of each group. Week 39, individual blood glucose (D) and body weight (F) of every treatment group. \* $p < 0.05$ , PGLP-1-VP compared with vehicle.

**PGLP-1-VP therapy increases pancreas weight and prevents progression of insulinitis.** After 39 weeks, the mouse pancreas was taken, weighed, and subjected to haematoxylin and eosin staining and immunofluorescence staining. The results showed that the pancreas weight of the PGLP-1-VP treated group increased significantly ( $p < 0.05$ , compared with vehicle). Although PGLP-1 or VP treatment also increased pancreas weight, there was no significant difference (compared with vehicle) (Fig. 6A,B). Histological analysis showed that all mice from the vehicle group had insulinitis, 40% of which were severe insulinitis. PGLP-1, VP and PGLP-1-VP treatment were all able to reduce insulinitis, and PGLP-1-VP treatment had the least insulinitis (no insulinitis, 27%; severe insulinitis, 9% (Fig. 6C). Immunofluorescence staining of the pancreas also confirmed the PGLP-1-VP group had the least percentage of severe insulinitis (Fig. 6A).

At week 5, 15, and 28, we also tested the C-peptide content of the mice, and the results showed that the C-peptide content of the mice in the PGLP-1-VP-treated group was significantly increased ( $p < 0.01$ ) (Fig. 6D). This indicates that PGLP-1-VP administration reduce the incidence of insulinitis, increase pancreatic weight, and increase C-peptide content.

**PGLP-1-VP treatment corrects the imbalance of Th1 and Th2 cells.** The interplay between Th1 and Th2 cells plays an important role in priming an immune response against pancreatic  $\beta$  cells<sup>37–40</sup>. In diabetic NOD mice, Th2/Th1 ratio is reduced due to an increase in Th1 cells and a decrease in Th2 cells<sup>41</sup>. Some literature

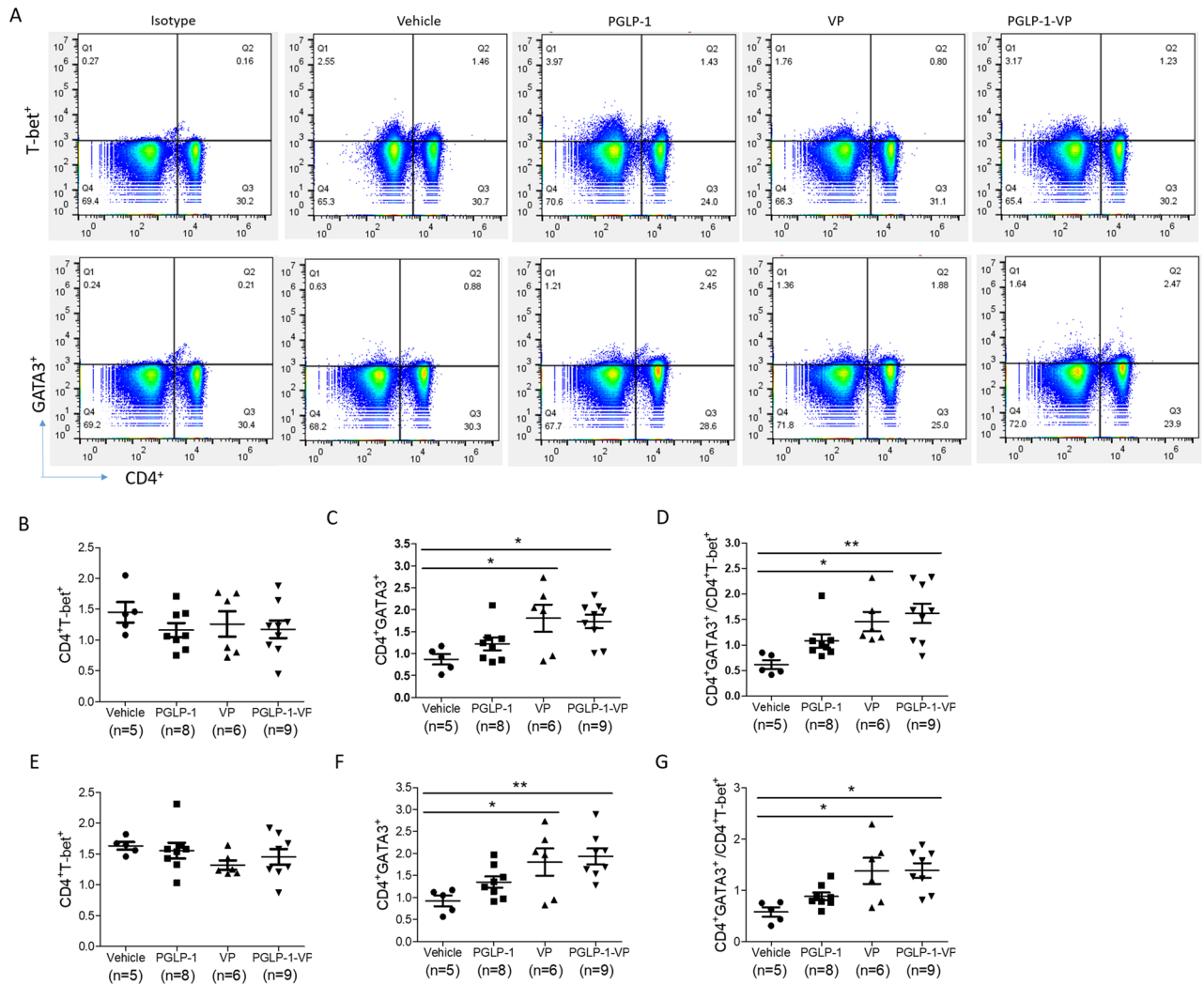


**Figure 6.** PGLP-1-VP treatment increases pancreas weight and prevents insulinitis progression. (A) Pancreata were stained with anti-insulin (red) antibodies and visualized by fluorescence microscopy. (B) Pancreas weight of each group of mice after 39 weeks. (C) Pancreatic sections were taken from each group and blindly scored for islet inflammation. (D) The content of C peptide at week 15 and week 28. \* $p < 0.05$ , \*\* $p < 0.01$ , PGLP-1-VP compared with vehicle.

reported that P277 can regulate the balance of Th1 and Th2 cells, and thus could play a role in the prevention of diabetes. Since VP and PGLP-1-VP are modified peptides of P277, we therefore analyzed Th1 and Th2 CD4<sup>+</sup> T cells in the spleen and pancreatic lymph nodes of NOD mice. Our data showed revealed that VP and PGLP-1-VP treatment increased the percentage of Th2 cells and balanced the ratio of Th2/Th1 (Fig. 7A–G) in the spleen and pancreatic lymph node (PLN) of NOD mice. After PGLP-1-VP treatment, Th2 cells in spleen and PLN were 1.73% and 1.94%, respectively, significantly higher than the 0.87% and 0.92% in the control group ( $p < 0.05$ ). The ratio of Th2/Th1 in spleen and PLN were 1.54% and 1.39%, respectively, significantly higher than 0.61% and 0.63% in the control group ( $p < 0.05$ ). PGLP-1 treatment also increased Th2 cells, but had no significant difference. These data indicated that PGLP-1-VP was able to increase Th2 cells percentages and balanced the ratio of Th2/Th1 like P277 and VP.

**PGLP-1-VP treatment corrects the imbalance of Treg and Th17 cells.** Because Treg cells have anti-inflammatory effects<sup>37</sup> in type 1 diabetes, we examined the frequencies of Treg cells through flow cytometry. Foxp3<sup>+</sup> Treg cells has higher frequencies in the spleens and PLN of NOD mice treated with PGLP-1 or PGLP-1-VP compared to vehicle group. The frequencies of Treg cells was 8.6% and 10.5% in the spleens and PLN of NOD mice treated with PGLP-1-VP, significantly higher than 6.3% and 7.4% in the control group (spleens,  $p < 0.01$ ; PLN,  $p < 0.01$ ) (Fig. 8A–G). Due to the important function of Th17 cells in autoimmune disease models<sup>37</sup>, ROR $\gamma$ t<sup>+</sup> Th17 cells were examined. The result revealed that PGLP-1 or PGLP-1-VP decreased Th17 cells, but had no significant difference. However, the ratio of Treg/Th17 increased significantly. The ratio of Treg/Th17 in PGLP-1-VP treatment group was 1.5% and 1.8% in the spleens and PLN, significantly higher than 0.7% and 0.8% in the control group (spleens,  $p < 0.05$ ; PLN,  $p < 0.01$ ) (Fig. 8A–G). Peptide VP treatment showed a trend for increasing Treg cells, decreasing Th17 cells, increasing the ratio of Treg/Th17 in the spleens and PLN, but there was no significant difference. All these data indicated that PGLP-1 or PGLP-1-VP was able to increase Treg cells and balanced the ratio of Treg/Th17, thereby preventing the occurrence of type 1 diabetes.

**PGLP-1-VP therapy increases TGF- $\beta$ 1 content.** Because TGF- $\beta$ 1 plays a key role in inhibiting islet autoimmune responses and improving autoimmune diabetes, we measured the level of TGF- $\beta$ 1 in the serum of NOD mice at week 5, week 15 and week 28. The results showed no difference in the levels of TGF- $\beta$ 1 in the serum of NOD mice at week 5, prior to treatment. At week 15 (10 weeks of administration), the serum TGF- $\beta$ 1 of the PGLP-1-VP group was significantly increased ( $p < 0.05$ , compared with vehicle), while no significant difference was found in PGLP-1 and VP groups (Fig. 9). At 29 week (24 weeks of treatment), the serum TGF- $\beta$ 1 of PGLP-1-VP group remained similar to Week 15, whereas the control group began to decline (PGLP-1-VP vs Vehicle,  $p < 0.01$ ).



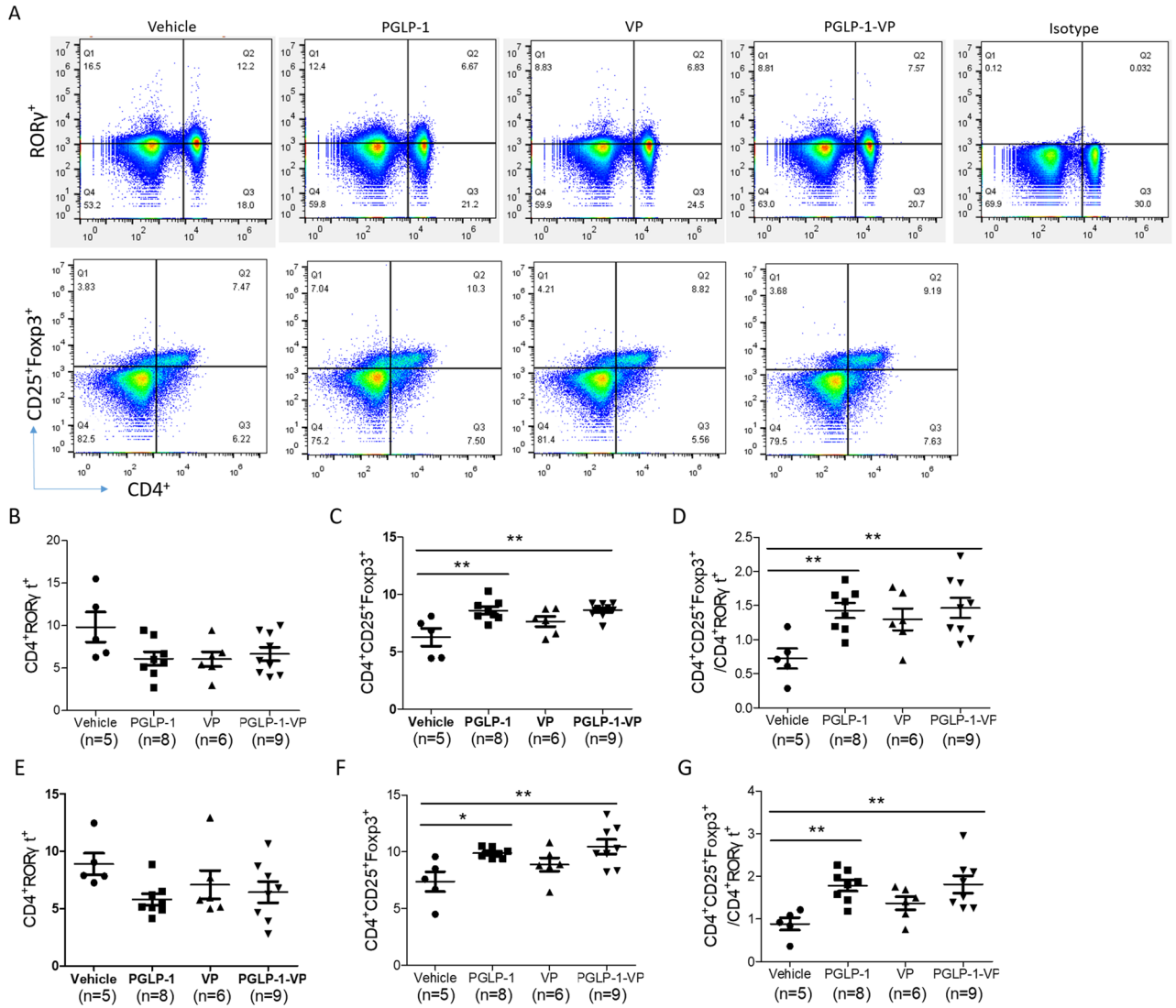
**Figure 7.** PGLP-1-VP treatment induces Th2 (GATA3<sup>+</sup>) cells in spleen and pancreatic lymph node (PLN). (A) Typical results of flow cytometry of each group. (B) Analysis of Th1 (T-bet<sup>+</sup>) cells by flow cytometry in spleen. (C) Analysis of Th2 cells by flow cytometry in spleen. (D) Analysis of Th2/Th1 values of each mouse in every group. (E) Analysis of Th1 (T-bet<sup>+</sup>) cells by flow cytometry in PLN. (F) Analysis of Th2 cells by flow cytometry in PLN. (G) Analysis of Th2/Th1 values of each mouse in PLN. \**p* < 0.05; \*\**p* < 0.01.

## Discussion

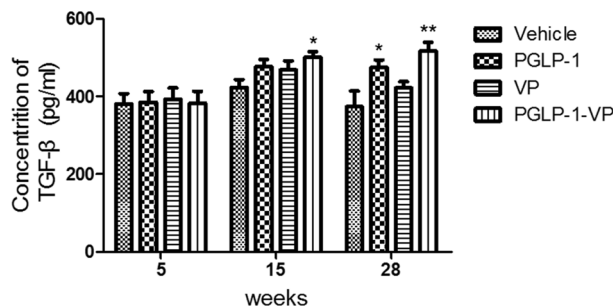
An effective T1DM therapy requires both the protection and regeneration of pancreatic  $\beta'$  cells and the inhibition of autoimmune attacks. In our previous study, we showed that combining P277 with other proteins or peptides treatment resulted in a better therapeutic effect in NOD mice<sup>31–34</sup>. Peptide VP is a novel, modified P277 peptide that provides anti-diabetic effects without causing atherogenic side effects<sup>30</sup> in NOD mice. Several human and animal studies have also demonstrated the potential role of GLP-1 RA in treating type 1 diabetes<sup>17,18</sup>. We have previously demonstrated that PGLP-1 reduced blood glucose, increased  $\beta$  cell mass and inhibited weight loss in STZ-induced hyperglycemia mice<sup>35</sup>. Based on these existing results, we designed a dual-functional GLP-1-VP peptide, which is expected to act both as a GLP-1RA and as an immunomodulator. We demonstrated here that PGLP-1-VP, like native GLP-1, has the same affinity as GLP-1R, while being significantly more resistant to DPP-IV digestion in vitro. Additionally, IPGTT verified that PGLP-1-VP had comparable glucose-dependent insulinotropic action to GLP-1, but with a much longer half-life (more than 10 h effect to only 4 h). These data verified that PGLP-1-VP can effectively work as a GLP-1R agonist.

It was reported that GLP-1RA can reduce blood glucose, increase islet  $\beta$  cell mass and control body weight in animal model<sup>14,19,42</sup>, and some clinical trials have shown that GLP-1RA had beneficial effects in both new onset and longstanding T1DM patients<sup>18,43,44</sup>. Consistent with this, PGLP-1-VP treatment can significantly ameliorate hyperglycemia, reduce food intake and improve glucose and insulin tolerance as well as PGLP-1 in STZ-induced hyperglycemic mice model. However, PGLP-1-VP treatment did not inhibit body weight loss, in contrast to reports that PGLP-1 can inhibit body loss in STZ-induced hyperglycemic mice<sup>35</sup>. The discrepancy may be due to PGLP-1-VP completely resisting DPP-IV digestion (incubation with DPP-IV enzyme for 10 h in vitro showed





**Figure 8.** PGLP-1-VP treatment induces Treg (Foxp3<sup>+</sup>) cells in spleen and PLN. **(A)** Typical results of flow cytometry of each group. **(B)** Analysis of Th17 (RORγt<sup>+</sup>) cells by flow cytometry in spleen. **(C)** Analysis of Treg cells by flow cytometry in spleen. **(D)** Analysis of Treg/Th17 values of each mouse in every group. **(E)** Analysis of Th17 (RORγt<sup>+</sup>) cells by flow cytometry in PLN. **(F)** Analysis of Treg cells by flow cytometry in PLN. **(G)** Analysis of Treg/Th17 values of each mouse in PLN. \*p < 0.05; \*\*p < 0.01.



**Figure 9.** Plasma TGF-β1 concentrations determined by ELISA in NOD mice at week 5, week 15, and week 29. \*p < 0.05; \*\*p < 0.01.

almost no degradation), thereby has not insulinomimetic action like PGLP-1. All these indicated that PGLP-1-VP, as a GLP-1RA, can improve diabetes.

T1DM is a chronic autoimmune disease characterized by the destruction of insulin-producing  $\beta$ -cell in the pancreas. We next tested PGLP-1-VP treatment in the NOD mouse, an excellent autoimmune diabetes model containing many characteristics of human T1DM, including genetic risk factors, the presence of pancreas-specific autoantibodies, and autoreactive CD4<sup>+</sup> T cells<sup>45</sup>. This model has been used extensively to test novel treatments for type 1 diabetes. Starting with 5-week-old NOD mice, 24 weeks of PGLP-1-VP treatment significantly reduced the cumulative incidence of diabetes, increased survival and delayed the onset of diabetes. Although treatment of PGLP-1 or VP alone also reduce the cumulative incidence of a disease, there was no significant difference compared with vehicle group. This indicated that PGLP-1-VP had the combined effects of PGLP-1 and VP. This may be associated with treatment with lighter insulinitis and heavier pancreas in GLP-1-VP group. This also confirms that GLP-1RA can increase  $\beta$  cell mass<sup>19</sup> and p277<sup>34</sup> has immunoregulatory function. Collectively, our data suggested that PGLP-1-VP had the combined action of PGLP-1 and VP in the prevention and treatment of type 1 diabetes.

T1DM is thought to be caused by abnormal interactions between the genome, the immune system and the environment<sup>46</sup>. Pathogenesis of diabetes involves the dysregulation and dysfunction of T cells. In particular, islet antigen specific CD4<sup>+</sup> T cells are key mediators in  $\beta$  cell damage and inflammatory injury<sup>47</sup>. Numerous studies have shown that alterations of Th1, Th2, Th17 cells, and Tregs play major roles in the etiology of T1DM<sup>48</sup>. Th1 cells exacerbates the development of T1DM while Th2 cells can ameliorate the autoimmune responses through producing cytokines such as IL-4 and IL-10<sup>49</sup>. In NOD mice, there is bias towards CD4 Th1 subtypes and a concomitant decrease in CD4 Th2 subtypes<sup>50,51</sup>. In this study, we showed that PGLP-1-VP or VP treatment significantly increased Th2 cell percentage and elevated ratio of Th2/Th1 in spleen and PLN. However, there was no significant difference in Th1 cell percentage between the groups. These data indicated that PGLP-1-VP treatment was able to increase Th2 cells percentages and balanced the ratio of Th2/Th1 similarly to P277 and VP.

Islet autoreactive CD4<sup>+</sup> T cells are normally deleted during thymic selection, and the few escapees are restrained in the peripheral by a variety of peripheral tolerance mechanisms. Immune tolerance mechanisms have been weakened in NOD mice, such that the slight disturbance between immune activation and tolerance can lead to the onset of the disease. Treg cells, the primary regulators of immune response and peripheral immune tolerance, play an important role in maintaining immune tolerance to islet antigens<sup>52</sup>. Some studies have shown that patients with T1DM have fewer and/or less effective Treg cells<sup>53</sup>. Herein, we first discovered that PGLP-1 or PGLP-1-VP, as a GLP-1R agonist, can increase Treg cells and enhance the ratio of Treg/Th17. This is consistent with the report that DPP-IV inhibitors can restore normoglycaemia<sup>23,24</sup> and improve islet graft survival<sup>54</sup> through T-cell modulation in diabetic mice. These data indicated that PGLP-1-VP and PGLP-1 were able to suppress immune responses through increasing Treg cells. The production of immunosuppressive factor TGF- $\beta$ 1 is an important mechanism for Treg cells to suppress immune response<sup>52</sup>, and TGF- $\beta$  knockout (KO) mice show excessive activation during immune response. Here, we show that the levels of TGF- $\beta$ 1 in the serum of the PGLP-1-VP and PGLP-1 groups were significantly increased after 24 weeks of treatment compared to treatment onset. This is consistent with DPP-IV inhibitor treatment increasing TGF- $\beta$ 1 production in the plasma of NOD mice<sup>23</sup>. In contrast, serum TGF- $\beta$ 1 in the vehicle group after 24 weeks of treatment was comparatively lower than at treatment onset, suggesting that increased Treg cells may produce immunosuppressive effects by the production of TGF- $\beta$ 1. These results indicate that PGLP-1-VP can inhibiting islet autoimmune responses by increasing Treg cells like DPP-IV inhibitors.

T1D is one of the most common chronic diseases in children and also exists in adults<sup>55-57</sup>. The reason is that autoreactive T cells that evade central and peripheral immune tolerance destroy insulin-producing  $\beta$  cell<sup>58</sup>. Insulin therapy can save lives but requires daily use, increasing the risk of severe hypoglycemia, reducing but not avoiding other serious complications, including microvascular and macrovascular disease and death<sup>59</sup>. Usually, at the time of diagnosis, most T1DM patients have beta cells and still survive for 5 years<sup>10-12</sup>. Higher levels of endogenous insulin secretion are associated with lower rates of complications<sup>60</sup>, so there is a need for safe interventions to maintain or restore beta cell function, improve short-term and long-term outcomes. PGLP-1-VP can increase islet  $\beta$ -cell mass in STZ-induced hyperglycemia and NOD mice through activating GLP-1R, and reduce NOD mice morbidity, mortality, and pancreatic inflammation through anti-inflammation and immune regulation effects, which, as a dual-functional peptide, can improve glycemic control, reduce insulin usage, and avoid other serious complications in the prevention and treatment of type 1 diabetes.

As we all know, T1DM is a chronic T-lymphocyte-mediated autoimmune disease that can cause the destruction of pancreatic  $\beta$ -cells, which will develop in stages over time<sup>61</sup>. In the first stage, there is islet autoimmunity, but the blood sugar is normal; in the second stage, there is islet autoimmunity, and the blood sugar is abnormal, but there are no clinical symptoms; in the third stage, on the basis of the first two stages, there is clinical symptoms of hyperglycemia, polydipsia, polyuria and weight loss<sup>62</sup>. Drugs that can delay disease progression or improve microvascular or macrovascular complications will also be a useful supplement to the treatment options of T1DM patients. It is reported that GLP-1 RA has the potential to improve blood sugar control, reduce insulin dose and weight loss, without increasing the occurrence of hypoglycemia, and may be suitable as an additional therapy for insulin<sup>18</sup>. We combine the effects of GLP-1RA and P277 to regulate T cell immunity, reduce the incidence of NOD mice, and reduce the blood glucose level of mice. Therefore, we can treat T1DM in the early stage and hope to delay the onset of diabetes.

In summary, the findings described herein reveal that PGLP-1-VP may be a novel dual-functional peptide that functions as a GLP-1R agonist and as a VP peptide. The GLP-1R receptor binding, DPP-IV digestion stability, and glucose-dependent insulin secretion effects of PGLP-1-VP in vitro and in vivo verified that PGLP-1-VP is a long acting GLP-1R agonist. In STZ induced hyperglycemic mice model, PGLP-1-VP ameliorates STZ-induced hyperglycemia and improves insulin sensitivity, which indicates that PGLP-1-VP could work as a long-acting

GLP-1R agonist *in vivo*. In the NOD mouse model, PGLP-1-VP as a dual-functional peptide is superior to PGLP-1 and VP alone in reducing morbidity, mortality, and pancreatic inflammation. Flow cytometry results showed that PGLP-1-VP can exert both the immunomodulatory function of VP peptide and the islet autoimmune inhibition function of GLP-1R agonist. Therefore, PGLP-1-VP may potentially act as a dual-functional peptide for anti-inflammation and immune regulation in the prevention and treatment of type 1 diabetes.

## Methods

**Peptide synthesis.** GLP-1, VP, PGLP-1 and PGLP-1-VP were chemically synthesized by GL Biochem (Shanghai) Ltd. China.

**Human GLP-1 receptor activation.** Human embryonic kidney (HEK-293) cells were obtained from ATCC and cultured in growing media (DMEM: 25 mM glucose, 10% FBS, 100 µg/mL penicillin and 100 µg/mL streptomycin). In our previous article, we utilized a co-transfection cell line CG-HEK293 cell which was able to express green fluorescence protein in response to the stimulation of GLP-1 or GLP-1 analogues<sup>35</sup>. GLP-1 receptor activation of PGLP-1-VP were tested and analyzed as previously described.

**Stability test for DPP-IV *in vitro*.** GLP-1 or PGLP-1-VP (20 µM) were mixed with the same volume of 0.2 ng/µL rhDPP-IV enzyme (R&D Systems Inc. MN, USA.) and incubated different times at 37 °C. Stability test for DPP-IV *in vitro* was performed as previously described<sup>16</sup>.

**Intraperitoneal glucose tolerance test (IPGTT) and insulin tolerance test (ITT).** Intraperitoneal glucose tolerance test was performed with 1.5 g/kg glucose in normal C57BL/6J mice (7–8 weeks old). Intraperitoneal glucose and insulin tolerance tests were performed with 1 g/kg glucose or 0.5 U/kg insulin, respectively, in STZ-induced hyperglycemic C57BL/6J mice.

**Mice and STZ *in vivo* treatment.** All animal experiments were carried out in accordance with the National Institutes of Health guide for the care and use of laboratory animals (NIH Publications) as well as the ARRIVE guidelines and approved by the animal ethics committee of China Pharmaceutical University (Permit Number: 2162326). C57BL/6J mice (7–8 weeks old) were obtained from Model Animal Research Center of Nanjing University (Nanjing, China). Mice were single or group-housed on a 12-h/12-h light–dark cycle at 22 °C with free access to food and water.

Male C57BL/6J mice were injected intraperitoneally (*i.p.*) with 50 mg/kg body weight STZ (Sigma-Aldrich Inc. MO, USA) for 5 consecutive days<sup>63,64</sup>. Blood glucose concentrations were measured at 7 and 14 days after the last injection of STZ, using a blood glucose meter (OMRON Healthcare (China) Co., Ltd. Dalian, China). Mice with two blood glucose measurements above 200 mg/dL were considered hyperglycemic.

**Glucose-lowering effect in STZ mice.** The hyperglycemic mice were divided into 4 groups: vehicle, PGLP-1, VP and PGLP-1-VP, injected subcutaneously with placebo (vehicle, PBS) or 30 nmol/kg peptide for 4 weeks (twice a day). Fasting blood glucose and body weight (fasted 8 h) were assayed weekly. Food intake was measured every 3 or 4 days. Animals were euthanized by isoflurane overdose and dissected tissues were immediately frozen in liquid nitrogen, unless otherwise stated<sup>16,35</sup>.

**Chronic treatments and follow-up in NOD mice.** Female 4-week-old NOD mice were obtained from Beijing HFK Bioscience Co. Ltd. (Beijing, China). NOD mice were randomly divided into 4 groups: vehicle, PGLP-1, VP and PGLP-1-VP, and each group was subcutaneously injected twice weekly with placebo [Lipofundin<sup>32</sup> (B. Braun Melsungen AG, Melsungen, Germany)] or 210 nmol/kg of peptides for 24 weeks. Body weight and blood glucose were measured once every 2 weeks until the end of the observation period. NOD mice were considered diabetic when blood glucose concentrations exceeded 200 mg/dL for 2 consecutive measurements. The onset time and death time of diabetic mice were calculated. Indexes of dead mice were shown as the last blood glucose or weight data. Blood samples were collected retro-orbital and centrifuged, and then serum was collected. Serum C-peptide levels and transforming growth factor-β1 (TGF-β1) were measured by enzyme-linked immunosorbent kits (Jiancheng Bio-Engineering Institute Co., Ltd. Nanjing, China).

**Pathology and histological examination.** Pancreata were fixed in 4% paraformaldehyde overnight at 4 °C and embedded in paraffin blocks. Sections (7 µm thickness) were stained with hematoxylin and eosin for histological scoring of insulinitis. Collect pancreatic sections at 100 µm intervals. Collect at least 25 islets for each pancreas sample to analyze the incidence and severity of insulinitis<sup>65</sup>. Insulinitis scoring was done by the pathologist who was blinded to the groups. Degrees of insulinitis in the islets was scored as follows: No-insulinitis (intact islets without inflammation); pre-insulinitis (inflammation ≤ 25%); mild insulinitis (25% < inflammation ≤ 50%); severe insulinitis (50% < inflammation)<sup>66</sup>. Immunofluorescence staining was performed as previously described<sup>35,67</sup>. Guinea pigs anti-mouse insulin (dilution 1:300; Abcam (Shanghai) Trading Co., Ltd. China) were used as the primary antibody. And the secondary antibodies used for immunofluorescence were donkey and goat anti-guinea pig IgG H&L (Alexa Fluor 488, Abcam (Shanghai) Trading Co., Ltd. China). The sections were examined using Olympus microscope and scanned in a systematic way using a computer with imaging software to control the data collection. The percentage of β-cell area per whole pancreas was calculated<sup>35,67</sup>.

**Flow cytometry.** Spleen cells and pancreatic lymphocytes were isolated from spleen and pancreatic lymph node (PLN) of 39-week-old NOD mice by mechanical disruption. Cells were respectively stained for Treg [(CD4<sup>+</sup>CD25<sup>+</sup>Foxp3<sup>+</sup>) (Foxp3 is a necessary factor for the development and function of Treg cells, and it is also the most sensitive marker for Treg cells)], Th17 (CD4<sup>+</sup> Rorγt<sup>+</sup>), Th1 (CD4<sup>+</sup> T-bet<sup>+</sup>) or Th2 (CD4<sup>+</sup> GATA3<sup>+</sup>) phenotypes. The following antibodies were used: FITC anti-mouse CD4 (BioLegend Inc. CA, USA), PE anti-mouse CD25 (BioLegend Inc. CA, USA), APC anti-GATA3 (BioLegend Inc. CA, USA), Alexa Fluor 647 Mouse Anti-Mouse RORγt (BD Biosciences, CA, USA), Alexa Fluor 647 Mouse anti-T-Bet (BD Biosciences, CA, USA), Alexa Fluor 647 Rat anti-Mouse Foxp3 (BD Biosciences, CA, USA). Stained cells were detected by Flow cytometer (Accuri C6, BD Biosciences, CA, USA) and analyzed using BD Accuri C6 system Software.

**Statistical analysis.** The data were expressed as means ± Standard Error of Mean (SEM) and analyzed using SPSS for windows version 13.0. Statistical significance was determined by Student's t-test or one-way ANOVA followed by Student–Newman–Keuls post hoc test. The Kaplan–Meier curves were analyzed with Log-rank (Mantel–Cox) tests. Differences were considered statistically significant at  $p < 0.05$ .

Received: 15 August 2020; Accepted: 1 February 2021

Published online: 11 February 2021

## References

- Wallberg, M. & Cooke, A. Immune mechanisms in type 1 diabetes. *Trends Immunol.* **34**(12), 583–591 (2013).
- Kuhn, C. *et al.* Regulatory mechanisms of immune tolerance in type 1 diabetes and their failures. *J. Autoimmun.* **71**, 69–77 (2016).
- Sia, C. Imbalance in Th cell polarization and its relevance in type 1 diabetes mellitus. *Rev. Diabet. Stud. RDS* **2**(4), 182–186 (2005).
- Feurerer, M., Shen, Y., Littman, D. R., Benoist, C. & Mathis, D. How punctual ablation of regulatory T cells unleashes an autoimmune lesion within the pancreatic islets. *Immunity* **31**(4), 654–664 (2009).
- Park, H. *et al.* A distinct lineage of CD4 T cells regulates tissue inflammation by producing interleukin 17. *Nat. Immunol.* **6**(11), 1133–1141 (2005).
- Emamaullee, J. A. *et al.* Inhibition of Th17 cells regulates autoimmune diabetes in NOD mice. *Diabetes* **58**(6), 1302–1311 (2009).
- Ghorbani, A. & Shafiee-Nick, R. Pathological consequences of C-peptide deficiency in insulin-dependent diabetes mellitus. *World J. Diabetes* **6**(1), 145–150 (2015).
- Bhatt, M. P., Lim, Y. C. & Ha, K. S. C-peptide replacement therapy as an emerging strategy for preventing diabetic vasculopathy. *Cardiovasc. Res.* **104**(2), 234–244 (2014).
- Shaw, J. A., Shetty, P., Burns, K. D., Fergusson, D. & Knoll, G. A. C-peptide as a therapy for kidney disease: A systematic review and meta-analysis. *PLoS ONE* **10**(5), e0127439 (2015).
- Devendra, D., Liu, E. & Eisenbarth, G. S. Type 1 diabetes: Recent developments. *BMJ* **328**(7442), 750–754 (2004).
- Madsbad, S., Krarup, T., Regeur, L., Faber, O. K. & Binder, C. Insulin secretory reserve in insulin dependent patients at time of diagnosis and the first 180 days of insulin treatment. *Acta Endocrinol.* **95**(3), 359–363 (1980).
- Madsbad, S. Prevalence of residual B cell function and its metabolic consequences in Type 1 (insulin-dependent) diabetes. *Diabetologia* **24**(3), 141–147 (1983).
- Kielgast, U., Holst, J. J. & Madsbad, S. Treatment of type 1 diabetic patients with glucagon-like peptide-1 (GLP-1) and GLP-1R agonists. *Curr. Diabetes Rev.* **5**(4), 266–275 (2009).
- Farilla, L. *et al.* Glucagon-like peptide-1 promotes islet cell growth and inhibits apoptosis in Zucker diabetic rats. *Endocrinology* **143**(11), 4397–4408 (2002).
- Drucker, D. J. Glucagon-like peptide-1 and the islet beta-cell: Augmentation of cell proliferation and inhibition of apoptosis. *Endocrinology* **144**(12), 5145–5148 (2003).
- Gao, H. *et al.* Pharmacological effects of EGLP-1, a novel analog of glucagon-like peptide-1, on carbohydrate and lipid metabolism. *Cell. Physiol. Biochem. Int. J. Exp. Cell. Physiol. Biochem. Pharmacol.* **48**(3), 1112–1122 (2018).
- Issa, C. M. & Azar, S. T. Possible role of GLP-1 and its agonists in the treatment of type 1 diabetes mellitus. *Curr. Diab. Rep.* **12**(5), 560–567 (2012).
- Harris, K. B. & Boland, C. L. Adjunctive role of glucagon-like peptide-1 receptor agonists in the management of type 1 diabetes mellitus. *Pharmacotherapy* **36**(9), 1011–1020 (2016).
- Sherry, N. A. *et al.* Exendin-4 improves reversal of diabetes in NOD mice treated with anti-CD3 monoclonal antibody by enhancing recovery of beta-cells. *Endocrinology* **148**(11), 5136–5144 (2007).
- Kielgast, U., Krarup, T., Holst, J. J. & Madsbad, S. Four weeks of treatment with liraglutide reduces insulin dose without loss of glycemic control in type 1 diabetic patients with and without residual beta-cell function. *Diabetes Care* **34**(7), 1463–1468 (2011).
- Lind, M., Jendle, J., Torffvit, O. & Lager, I. Glucagon-like peptide 1 (GLP-1) analogue combined with insulin reduces HbA1c and weight with low risk of hypoglycemia and high treatment satisfaction. *Prim. Care Diabetes* **6**(1), 41–46 (2012).
- Lee, Y. S. & Jun, H. S. Anti-inflammatory effects of GLP-1-based therapies beyond glucose control. *Mediat. Inflamm.* **2016**, 3094642 (2016).
- Tian, L. *et al.* Reversal of new-onset diabetes through modulating inflammation and stimulating beta-cell replication in nonobese diabetic mice by a dipeptidyl peptidase IV inhibitor. *Endocrinology* **151**(7), 3049–3060 (2010).
- Suarez-Pinzon, W. L., Cembrowski, G. S. & Rabinovitch, A. Combination therapy with a dipeptidyl peptidase-4 inhibitor and a proton pump inhibitor restores normoglycaemia in non-obese diabetic mice. *Diabetologia* **52**(8), 1680–1682 (2009).
- Pugazhenthii, U., Velmurugan, K., Tran, A., Mahaffey, G. & Pugazhenthii, S. Anti-inflammatory action of exendin-4 in human islets is enhanced by phosphodiesterase inhibitors: Potential therapeutic benefits in diabetic patients. *Diabetologia* **53**(11), 2357–2368 (2010).
- Elias, D. & Cohen, I. R. The hsp60 peptide p277 arrests the autoimmune diabetes induced by the toxin streptozotocin. *Diabetes* **45**(9), 1168–1172 (1996).
- Blasi, C., Kim, E. & Knowlton, A. A. Improved metabolic control in diabetes, HSP60, and proinflammatory mediators. *Autoimmune Dis.* **2012**, 346501 (2012).
- Xiong, Q. *et al.* Promotion of atherosclerosis in high cholesterol diet-fed rabbits by immunization with the P277 peptide. *Immunol. Lett.* **170**, 80–87 (2016).
- Yong, L. *et al.* Immunization with P277 induces vascular leak syndrome in C57BL/6 mice via endothelial damage. *Autoimmunity* **43**(8), 654–663 (2010).

30. Zhang, Y. *et al.* Novel mutant P277 peptide VP to ameliorate atherogenic side-effects and to preserve anti-diabetic effects in NOD mice. *Exp. Cell Res.* **371**(2), 399–408 (2018).
31. Jin, L. *et al.* A Th1-recognized peptide P277, when tandemly repeated, enhances a Th2 immune response toward effective vaccines against autoimmune diabetes in nonobese diabetic mice. *J. Immunol.* **180**(1), 58–63 (2008).
32. Ma, Y. J. *et al.* Vaccination of non-obese diabetic mice with a fragment of peptide P277 attenuates insulin-dependent diabetes mellitus. *Int. Immunopharmacol.* **11**(9), 1298–1302 (2011).
33. Lu, S. *et al.* Fusion protein His-Hsp65-6IA2P2 prevents type 1 diabetes through nasal immunization in NOD Mice. *Int. Immunopharmacol.* **35**, 235–242 (2016).
34. Liang, J., Aihua, Z., Yu, W., Yong, L. & Jingjing, L. HSP65 serves as an immunogenic carrier for a diabetogenic peptide P277 inducing anti-inflammatory immune response in NOD mice by nasal administration. *Vaccine* **28**(19), 3312–3317 (2010).
35. Gao, H. S. *et al.* PGLP-1, a novel long-acting dual-function GLP-1 analog, ameliorates streptozotocin-induced hyperglycemia and inhibits body weight loss. *FASEB J.* **31**(8), 3527–3539 (2017).
36. O'Harte, F. P., Mooney, M. H., Lawlor, A. & Flatt, P. R. N-terminally modified glucagon-like peptide-1(7–36) amide exhibits resistance to enzymatic degradation while maintaining its antihyperglycaemic activity in vivo. *Biochem. Biophys. Acta.* **1474**(1), 13–22 (2000).
37. Pfeleger, C., Meierhoff, G., Kolb, H., Schloot, N. C., p520/521 Study, G. Association of T-cell reactivity with beta-cell function in recent onset type 1 diabetes patients. *J. Autoimmun.* **34**(2), 127–35 (2010).
38. Luger, D. *et al.* Either a Th17 or a Th1 effector response can drive autoimmunity: Conditions of disease induction affect dominant effector category. *J. Exp. Med.* **205**(4), 799–810 (2008).
39. Stechova, K. *et al.* High T-helper-1 cytokines but low T-helper-3 cytokines, inflammatory cytokines and chemokines in children with high risk of developing type 1 diabetes. *Diabetes Metab. Res. Rev.* **23**(6), 462–471 (2007).
40. Rachmiel, M. *et al.* TH1/TH2 cytokine balance in patients with both type 1 diabetes mellitus and asthma. *Cytokine* **34**(3–4), 170–176 (2006).
41. Bi, X., Li, F., Liu, S., Jin, Y., Zhang, X., Yang, T., Dai, Y., Li, X., Zhao, A. Z. omega-3 polyunsaturated fatty acids ameliorate type 1 diabetes and autoimmunity. *J. Clin. Investig.* (2017).
42. Tian, B. *et al.* Upregulating CD4+CD25+FOXP3+ regulatory T cells in pancreatic lymph nodes in diabetic NOD mice by adjuvant immunotherapy. *Transplantation* **87**(2), 198–206 (2009).
43. Popovic, D. S., Stokic, E. & Popovic, S. L. GLP-1 receptor agonists and type 1 diabetes—Where do we stand?. *Curr. Pharm. Des.* **21**(36), 5292–5298 (2015).
44. Pettus, J., Hirsch, I. & Edelman, S. GLP-1 agonists in type 1 diabetes. *Clin. Immunol.* **149**(3), 317–323 (2013).
45. Anderson, M. S. & Bluestone, J. A. The NOD mouse: A model of immune dysregulation. *Annu. Rev. Immunol.* **23**, 447–485 (2005).
46. Beauchamp, G. & Haller, M. J. Can we prevent type 1 diabetes?. *Curr. Diab. Rep.* **15**(11), 86 (2015).
47. van Belle, T. L., Coppieters, K. T. & von Herrath, M. G. Type 1 diabetes: Etiology, immunology, and therapeutic strategies. *Physiol. Rev.* **91**(1), 79–118 (2011).
48. Lehuen, A., Diana, J., Zacccone, P. & Cooke, A. Immune cell crosstalk in type 1 diabetes. *Nat. Rev. Immunol.* **10**(7), 501–513 (2010).
49. Tang, Q. *et al.* Visualizing regulatory T cell control of autoimmune responses in nonobese diabetic mice. *Nat. Immunol.* **7**(1), 83–92 (2006).
50. Charlton, B. & Lafferty, K. J. The Th1/Th2 balance in autoimmunity. *Curr. Opin. Immunol.* **7**(6), 793–798 (1995).
51. Boitard, C. T-lymphocyte recognition of beta cells in type 1 diabetes: Clinical perspectives. *Diab. Metab.* **39**(6), 459–466 (2013).
52. Sakaguchi, S., Vignali, D. A., Rudensky, A. Y., Niec, R. E. & Waldmann, H. The plasticity and stability of regulatory T cells. *Nat. Rev. Immunol.* **13**(6), 461–467 (2013).
53. Lindley, S. *et al.* Defective suppressor function in CD4(+)CD25(+) T-cells from patients with type 1 diabetes. *Diabetes* **54**(1), 92–99 (2005).
54. Kim, S. J., Nian, C., Doudet, D. J. & McIntosh, C. H. Dipeptidyl peptidase IV inhibition with MK0431 improves islet graft survival in diabetic NOD mice partially via T-cell modulation. *Diabetes* **58**(3), 641–651 (2009).
55. Dabelea, D. *et al.* Prevalence of type 1 and type 2 diabetes among children and adolescents from 2001 to 2009. *JAMA* **311**(17), 1778–1786 (2014).
56. Ng, M. *et al.* Global, regional, and national prevalence of overweight and obesity in children and adults during 1980–2013: A systematic analysis for the Global Burden of Disease Study 2013. *Lancet* **384**(9945), 766–781 (2014).
57. Federation, I. D. Diabetes Atlas (Eighth edition). (2017).
58. Bluestone, J. A., Herold, K. & Eisenbarth, G. Genetics, pathogenesis and clinical interventions in type 1 diabetes. *Nature* **464**(7293), 1293–1300 (2010).
59. Lind, M. *et al.* Glycemic control and excess mortality in type 1 diabetes. *N. Engl. J. Med.* **371**(21), 1972–1982 (2014).
60. Steffes, M. W., Sibley, S., Jackson, M. & Thomas, W. Beta-cell function and the development of diabetes-related complications in the diabetes control and complications trial. *Diabetes Care* **26**(3), 832–836 (2003).
61. Simmons, K. M., Gottlieb, P. A. & Michels, A. W. Immune intervention and preservation of pancreatic beta cell function in type 1 diabetes. *Curr. Diab. Rep.* **16**(10), 97 (2016).
62. Insel, R. A. *et al.* Staging presymptomatic type 1 diabetes: A scientific statement of JDRE, the Endocrine Society, and the American Diabetes Association. *Diabetes Care* **38**(10), 1964–1974 (2015).
63. Like, A. A. & Rossini, A. A. Streptozotocin-induced pancreatic insulinitis: New model of diabetes mellitus. *Science* **193**(4251), 415–417 (1976).
64. Rossini, A. A., Williams, R. M., Appel, M. C. & Like, A. A. Sex differences in the multiple-dose streptozotocin model of diabetes. *Endocrinology* **103**(4), 1518–1520 (1978).
65. Casellas, A. *et al.* Expression of IGF-I in pancreatic islets prevents lymphocytic infiltration and protects mice from type 1 diabetes. *Diabetes* **55**(12), 3246–3255 (2006).
66. Robert, S. *et al.* Oral delivery of glutamic acid decarboxylase (GAD)-65 and IL10 by *Lactococcus lactis* reverses diabetes in recent-onset NOD mice. *Diabetes* **63**(8), 2876–2887 (2014).
67. Cai, E. P. *et al.* In vivo role of focal adhesion kinase in regulating pancreatic beta-cell mass and function through insulin signaling, actin dynamics, and granule trafficking. *Diabetes* **61**(7), 1708–1718 (2012).

## Author contributions

L.J. and Y.Z. designed the experiments. H.G. performed all the experiments and prepared figures. Q.Z., S.T., Z.S., K.L., and F.Q. helped perform the animal experiments and collected the sample data. H.G. wrote the manuscript, S.T. and Y.P. reviewed the manuscript. All authors contributed to discuss the research in the experimental period.

## Funding

This work was supported by National Natural Science Foundation of China (Grant No. 81570696, No.81702941, and No. 31270985); Supported by Excellent Youth Foundation of Jiangsu Scientific Committee (BK20140029); Priority Academic Program Development of Jiangsu Higher Education Institutions; Pingdingshan High-level

Talent Startup Fund (PXY-BSQD-2018011); Key Research Projects of Henan Higher Education Institutions (20B350006); Henan Provincial Key Science and Technology Research Projects (202102310478).

### Competing interests

The authors declare no competing interests.

### Additional information

**Supplementary Information** The online version contains supplementary material available at <https://doi.org/10.1038/s41598-021-83201-4>.

**Correspondence** and requests for materials should be addressed to L.J. or Y.Z.

**Reprints and permissions information** is available at [www.nature.com/reprints](http://www.nature.com/reprints).

**Publisher's note** Springer Nature remains neutral with regard to jurisdictional claims in published maps and institutional affiliations.



**Open Access** This article is licensed under a Creative Commons Attribution 4.0 International License, which permits use, sharing, adaptation, distribution and reproduction in any medium or format, as long as you give appropriate credit to the original author(s) and the source, provide a link to the Creative Commons licence, and indicate if changes were made. The images or other third party material in this article are included in the article's Creative Commons licence, unless indicated otherwise in a credit line to the material. If material is not included in the article's Creative Commons licence and your intended use is not permitted by statutory regulation or exceeds the permitted use, you will need to obtain permission directly from the copyright holder. To view a copy of this licence, visit <http://creativecommons.org/licenses/by/4.0/>.

© The Author(s) 2021