

CORRECTION

 Cite this: *RSC Adv.*, 2022, 12, 6640

Correction: Nanochannel conduction in piezoelectric polymeric membrane using swift heavy ions and nanoclay

 Karun Kumar Jana,^a Niraj Kumar Vishwakarma,^b Biswajit Ray,^b Saif A. Khan,^c Devesh K. Avasthi,^c Manjusri Misra^d and Pralay Maiti^{*a}

DOI: 10.1039/d2ra90012b

rsc.li/rsc-advances

 Correction for 'Nanochannel conduction in piezoelectric polymeric membrane using swift heavy ions and nanoclay' by Karun Kumar Jana *et al.*, *RSC Adv.*, 2013, 3, 6147–6159. DOI: 10.1039/C3RA23176C

The authors regret a mistake in Fig. 1a and in the caption of Fig. 1a. Fig. 1a shows SEM images of PVDF and NH surfaces after etching at different fluences. In Fig. 1a of the original manuscript, the panel for PVDF after etching at 1×10^6 fluences incorrectly showed a zoomed in section of the panel of PVDF after etching at 1×10^5 fluences.

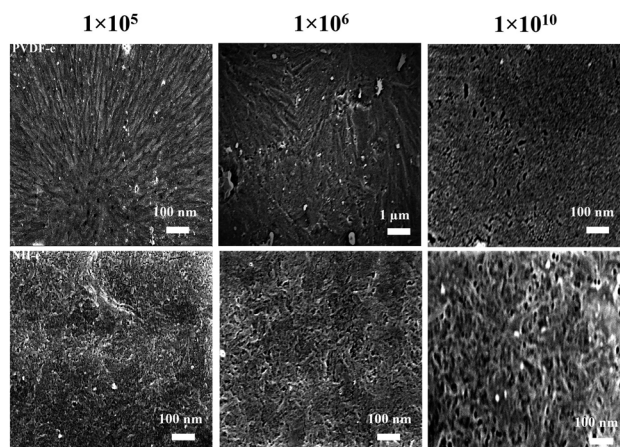


Fig. 1 (a) SEM images of the PVDF (upper row) and NH surfaces (lower row) after etching at different fluences.

The caption of Fig. 1a in the original manuscript incorrectly described the SEM images of PVDF to be shown in the upper column and NH surfaces to be the lower column.

The new figure has been reviewed by an expert and is provided here with the corrected caption. This correction does not alter the conclusions presented in this *RSC Advances* paper.

The Royal Society of Chemistry apologises for these errors and any consequent inconvenience to authors and readers.

^aSchool of Materials Science and Technology, Indian Institute of Technology, Banaras Hindu University, Varanasi 221 005, India. E-mail: pmaiti.mst@itbhu.ac.in

^bDepartment of Chemistry, Banaras Hindu University, Varanasi 221 005, India

^cInter University Accelerator Centre, Aruna Asaf Ali Marg, New Delhi 110 067, India

^dSchool of Engineering and the Department of Plant Agriculture, University of Guelph, Thornbrough Building, Guelph, Ontario, N1G2W1, Canada

