



ARTICLE

Probiotic Characteristics of *Lactobacillus brevis* KT38-3 Isolated from an Artisanal Tulum Cheese

Seda Hacıoğlu¹ and Buket Kunduhoglu^{2,*}

¹Institute of Science, University of Eskişehir Osmangazi, Eskişehir 26040, Turkey

²Department of Biology, Faculty of Science and Letters, University of Eskişehir Osmangazi, Eskişehir 26040, Turkey

OPEN ACCESS

Received May 12, 2021

Revised August 10, 2021

Accepted August 31, 2021

*Corresponding author : Buket Kunduhoglu
Department of Biology, Faculty of Science and Letters, University of Eskişehir Osmangazi, Eskişehir 26040, Turkey
Tel: +90-222-2393750
Fax: +90-222-2393578
E-mail: bkunduh@ogu.edu.tr

*ORCID
Seda Hacıoğlu
<https://orcid.org/0000-0003-2357-9038>
Buket Kunduhoglu
<https://orcid.org/0000-0002-4778-8128>

Abstract Probiotics are living microorganisms that, when administered in adequate amounts, provide a health benefit to the host and are considered safe. Most probiotic strains that are beneficial to human health are included in the “Lactic acid bacteria” (LAB) group. The positive effects of probiotic bacteria on the host’s health are species-specific and even strain-specific. Therefore, evaluating the probiotic potential of both wild and novel strains is essential. In this study, the probiotic characteristics of *Lactobacillus brevis* KT38-3 were determined. The strain identification was achieved by 16S rRNA sequencing. API-ZYM test kits were used to determine the enzymatic capacity of the strain. *L. brevis* KT38-3 was able to survive in conditions with a broad pH range (pH 2–7), range of bile salts (0.3%–1%) and conditions that simulated gastric juice and intestinal juice. The percentage of autoaggregation (59.4%), coaggregation with *E. coli* O157:H7 (37.4%) and hydrophobicity were determined to be 51.1%, 47.4%, and 52.7%, respectively. *L. brevis* KT38-3 produced β -galactosidase enzymes and was able ferment lactose. In addition, this strain was capable of producing antimicrobial peptides against the bacteria tested, including methicillin and/or vancomycin-resistant bacteria. The cell-free supernatants of the strain had high antioxidant activities (DPPH: 54.9% and ABTS: 48.7%). Therefore, considering these many essential *in vitro* probiotic properties, *L. brevis* KT38-3 has the potential to be used as a probiotic supplement. Supporting these findings with *in vivo* experiments to evaluate the potential health benefits will be the subject of our future work.

Keywords probiotic potential, antimicrobial peptides, lactic acid bacteria, *Lactobacillus brevis*, artisanal cheese

Introduction

Probiotics are described by FAO/WHO as “live microorganisms that, when administered in adequate amounts, confer a health benefit on the host” (Hill et al., 2014). Most probiotic strains that are beneficial for human health are included in the “Lactic acid bacteria” (LAB) group. However, the biological activities of probiotic microorganisms that are beneficial to the host may vary depending on the species or even the strain, the number of probiotic cells used per day, and the physiological

characteristics of the host (Hawrelak, 2003; Salminen and Gueimonde, 2004; Tannis, 2008).

LABs have long been used as starter cultures for foods and beverages as they can improve the nutritional value, organoleptic properties and shelf life of fermented food (Florou-Paneri et al., 2013). The production of various foodstuffs with the lactic acid fermentation process is one of the oldest inventions of humanity. Many different societies in various parts of the world have used lactic acid fermentation to keep foodstuffs, such as milk, meat, vegetables and fish, without deterioration. Fermented foods and beverages were previously produced by spontaneous fermentation (self-fermentation) with microbiota found naturally in raw materials. Subsequently, the food industry opted for selected starter cultures to be added directly to the food. Thus, the lactic acid fermentation process could be controlled at an optimum level and standardization of the final product was achieved (Bintsis, 2018).

Various products that are traditionally fermented are produced without the use of a starter culture are rich resources for the isolation of LAB strains with probiotic potential. Moreover, since these have long been a part of the human diet, the isolated LABs and some of their metabolites, called postbiotics, are considered safe for human health (Zielińska and Kolożyn-Krajewska, 2018). However, the LAB content of many traditionally fermented food varieties and their probiotic potentials are still unknown. Therefore, studies to obtain new probiotic bacterial strains from traditional foods have recently gained importance (Chander et al., 2018).

Turkey is a very rich country in terms of the fermented product diversity. It has been reported that 160–193 types of cheese are produced in different regions of Turkey (Çetinkaya, 2005; Swan, 2005). Kargi tulum cheese is one of the artisanal cheeses produced by traditional methods in Turkey (Çetinkaya, 2005). This cheese is produced by small-scale dairies using raw whole sheep milk, goat milk, cow milk, buffalo milk or a mixture of these. Afterwards, the curds are compressed into goat-skin bags to ensure that no entrapped air remains. Goat-skin bags are the material traditionally used to package tulum cheese. After this preparation, the Kargi tulum cheese is then incubated for at least 3 months (at 4°C to 6°C) in the uplands (personal communication with local producer). Kunduhoglu et al. (2012) previously reported that the LAB strains were responsible for the spontaneous fermentation of Kargi tulum cheese. However, many beneficial properties and characteristics of the LAB species found in the Kargi tulum cheese remained unknown. Therefore, this study aimed to evaluate the *in vitro* probiotic characteristics of the *L. brevis* KT38-3 strain isolated from artisanal Kargi tulum cheese, and the strain was identified by 16S rRNA gene sequencing.

Materials and Methods

In this study, all tests were at least triplicated except for the genotypic species identification. All incubations in this study were performed for 24 h at 37°C (aerobically) unless otherwise specified.

Genotypic identification of *L. brevis* KT38-3

The KT38-3 strain used in this study was isolated in our previous study. First, the essential probiotic characteristics of this strain were determined, and then species level identification was done by 16S rRNA sequencing. The genomic DNA of the KT38-3 strain was isolated with GeneMATRIX Bacterial & Yeast DNA isolation kit (EurX, Gdańsk, Poland) according to the supplier's specifications. The thermo Scientific Nanodrop 2000 (Massachusetts, MA, USA) device was used to determine the DNA quantity. The targeted gene regions were amplified using the 27F (5'-AGAGTTTGATCMTGGCTCAG-3') and 1492R (5'-TACGGYTACCTTGTTACGACTT-3') universal 16S rRNA bacterial primers. The PCR procedure was carried

out with the same method as Kunduhoglu and Hacıoglu (2021). The sequences obtained were compared with GenBank database using the BLAST.

Preparation of cell pellet and supernatant from *L. brevis* KT38-3 culture

L. brevis KT38-3 was inoculated on MRS broth (Sigma-Aldrich, St. Louis, MO, USA), and after aerobic incubation, the culture was centrifuged at 4,400×g for 10 min at 4°C (Sigma-Aldrich, 3–16 K). Then the supernatant and cell pellet were separated. The cell free supernatant of the *L. brevis* KT38-3 culture (namely KT38-3-CFS) was sterilized with a 0.22 µm pore size filter. The cell pellet was used for preparing the *L. brevis* KT38-3 cell suspension (namely KT38-3-CS). The cell pellet was washed twice with phosphate-buffered saline (PBS, pH=7.2) by centrifugation, then the cell density was adjusted (10^8 CFU/mL) according to the 0.5 McFarland standard.

Tolerance tests

pH tolerance

Concentrated HCl or 5 M NaOH were used to adjust the MRS broth pH to 2, 3, 4, 5, 6, or 7. Each tube of this series was inoculated with 0.1 mL KT38-3-CS. All tubes were incubated at 37°C for 4 h. During the incubation, 0.1 mL aliquots were taken from each tube at one-hour intervals. These samples were spread on the surface of MRS agar (Sigma-Aldrich) plates and the colony numbers (CFU/mL) were determined after the incubation.

The pH of the MRS medium brand we use was 5.8. Therefore, *L. brevis* KT38-3 cultured in MRS broth (pH=5.8) was the positive control in all of the survival tests.

Bile salts tolerance

First, the Ox-bile concentration of the MRS broth tubes was set at 0.3%, 0.5%, or 1.0% (w/v); Sigma-Aldrich). Then, 0.1 mL KT38-3-CS was added to each tube and incubated for 6 h at 37°C. A 0.1 mL sample was taken from each tube at one-hour intervals and colony growth was checked as described above.

Artificial gastric juice and artificial intestinal fluid tolerance

The final pH of the artificial gastric juice (NaCl 0.85% w/v and pepsin 0.5% w/v) was adjusted to 2.0 with 1 M HCl. A total of 90 mL artificial gastric juice was inoculated with 10 mL of KT38-3-CS. After mixing, the initial bacterial count was determined by colony count and incubated at 37°C for 4 h with shaking. The final bacterial number was determined after the incubation. This artificial gastric juice culture was used for the intestinal juice test. For this, KT38-3 cells and artificial gastric juice were separated by centrifugation at 4,400×g for 10 min. The pellets were washed with PBS by centrifugation at 4,400×g for 10 min. Then, the pellets were resuspended in artificial intestinal fluid (pancreatin 0.1% w/v, bovine bile salts 0.15% w/v; pH=7.0). A total of 90 mL of artificial intestinal fluid was inoculated with 10 mL of the KT38-3-CS obtained from the artificial gastric juice. After mixing, the initial bacterial count was determined by colony count and incubated at 37°C for 4 h with shaking. The initial and final bacterial numbers were described above (Zárate et al., 2000; Grimoud et al., 2010).

Cell surface hydrophobicity

The cell surface hydrophobicity of *L. brevis* KT38-3 was assessed by measuring the level of microbial adhesion to hydrocarbons (Kotzamanidis et al., 2010). KT38-3-CS was resuspended in 3 mL of 0.1 M KNO₃, and the cell suspension

optical density (OD_{600}) was measured (A_0). Then Xsilene (1 mL) was added to this cell suspension, vortexed for 2 min, and incubated at 37°C, for 1 h. Then, the water and xylene phases were separated, and the optical density of the aqueous phase was measured (A_1). The hydrophobicity of *L. brevis* KT38-3 was classified according to Rosenberg and Gutnick (1980). The percentage of the cell surface hydrophobicity was calculated using the following formula:

$$\text{Hydrophobicity (\%)} = (1 - A_1 / A_0) \times 100$$

Autoaggregation assay

KT38-3-CS was vortexed for 30 s and incubated for 4 h at 37°C. The OD_{600} of KT38-3-CS was measured before (A_0) and after (A_t) incubation using a spectrophotometer. The autoaggregation percentage was calculated as follows (Abdulla et al., 2014):

$$\text{Autoaggregation (\%)} = (1 - A_t / A_0) \times 100s$$

Coaggregation assay

KT38-3-CS (1 mL) and the cell suspension of *Escherichia coli* O157:H7 (1 mL) were mixed and incubated at 37°C without agitation. The absorbances of this mixture were measured at different times (0 or 4 h; at 600 nm). In addition, absorbance was determined for each bacterial suspension alone. The coaggregation percentage was calculated as follows:

$$\text{Coaggregation (\%)} = [(A_{E. coli} + A_{L. brevis}) - 2A_{mix} / (A_{E. coli} + A_{L. brevis})] \times 100$$

where $A_{E. coli}$ and $A_{L. brevis}$ represent the A_{600nm} of the separate bacterial suspensions in control tubes, and A_{mix} represents the absorbance of the mixed bacterial suspension at 4 h.

Safety evaluation for *L. brevis* KT38-3

Deoxyribonuclease test

A deoxyribonuclease (DNase) test was performed to determine the ability of *L. brevis* KT38-3 to hydrolyze DNA. DNase agar plates (Sigma-Aldrich) were inoculated with KT38-3-CS. After incubation, 1 N HCl was poured into the medium. If a clear zone occurred surrounding the colony, it was considered a positive result (Ejiofor et al., 2018).

Hemolysis test

The KT38-3-CS was seeded on sheep blood agar plates. After incubation, if there was a greenish or clear zone surrounding the colony, it was considered as α -hemolysis or β -hemolysis, respectively (Pavlov et al., 2004).

Antibiotic susceptibility of *L. brevis* KT38-3

The inhibitory activity of several of the antibiotics listed in (Fig. 1) against *L. brevis* KT38-3 were determined. The *L. brevis* KT38-3 was inoculated in MRS broth and incubated overnight at 37°C. The fresh MRS broth culture of *L. brevis* KT38-3 (the final concentration was 10^8 CFU/mL; 0.1 mL) was poured and spread onto MRS agar plates. Then antibiotic

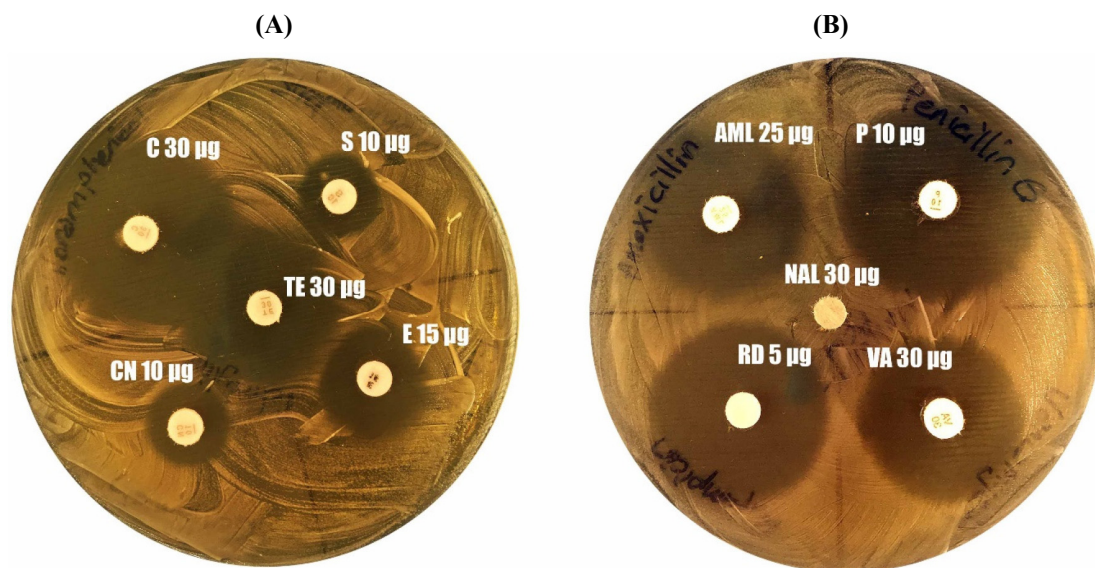


Fig. 1. The susceptibility/resistance of *Lactobacillus brevis* KT38-3 strain to various antibiotics was determined by disk diffusion method (A) 1- Chloramphenicol (C; 30 µg/disk), 2- Streptomycin (S; 10 µg/disk), 3- Erythromycin (E; 15 µg/disk), 4- Gentamicin (CN; 10 µg/disk), 5- Tetracycline (TE, 30 µg/disk). (B) 6- Amoxicillin (AML; 25 µg/disk), 7- Penicillin G (P; 10 µg/disk), 8- Vancomycin (VA; 30 µg/disk), 9- Rifampicin (RD; 5 µg/disk), 10- Nalidixic Acid (NAL; 30 µg/disk).

discs were placed on the surface of MRS agar plates. The inhibition zone diameters were measured after incubation. Then the sensitivity/resistance of the strain was evaluated according to the CLSI breakpoints (2017).

Enzymatic profile of *L. brevis* KT38-3

The *L. brevis* KT38-3 enzymatic activity spectrum was determined with API-ZYM (BioMérieux, Lyon, France) test kits. The types of enzyme activity that were tested are listed in Table 1. Each cupule of the API ZYM was inoculated with KT38-3-CS. After 4 h of incubation at 37°C, the results of the 19 enzyme (Table 1) activities tested for *L. brevis* KT38-3 were evaluated according to the manufacturer's instructions.

Table 1. The enzymatic activity spectrum of *Lactobacillus brevis* KT38-3 determined using the API-ZYM test kit

Enzymes	Enzymes	Enzymes	Enzymes
Esterase (C-4)	1	Phosphohydrolase	1
Esterase lipase (C-8)	1	α-Galactosidase	2
Lipase (C-14)	0	β-Galactosidase	3
Leucine aminopeptidase	3	β-Glucuronidase	1
Valine aminopeptidase	3	α-Glucosidase	2
Cystine aminopeptidase	0	β-Glucosidase	3
Trypsin	0	N-Acetyl-β-glucosaminidase	0
α-Chymotrypsin	0	α-Mannosidase	0
Alkaline phosphatase	0	α-Fucosidase	0
Acid phosphatase	1	Control	0

0, 0 nmol; 1, 5 nmol; 2, 10 nmol; 3, 20 nmol; 4, 30 nmol; 5, ≥40 nmol.

Carbohydrate fermentation profile of *L. brevis* KT38-3

The ability of *L. brevis* KT38-3 to ferment carbohydrates was determined by API CH50 test kits (BioMérieux). The names of the 49 carbohydrates tested are given in Table 2. Each cupule of the API CH50 was inoculated with KT38-3-CS, and the test results were evaluated according to the manufacturer's instructions and API-WEB.

Antimicrobial activity of KT38-3-CFS

The antagonistic activity of the cell free supernatant (KT38-3-CFS) of *L. brevis* KT38-3 was determined with an agar well diffusion assay. *L. brevis* KT38-3 could produce hydrogen peroxide (data not shown). Therefore, catalase (1 mg/mL; Sigma-Aldrich) was added to KT38-3-CFS to exclude the antimicrobial effect of hydrogen peroxide. In addition, the pH of the KT38-3-CFS was adjusted to 6.5 (with 5 M NaOH) to exclude the antimicrobial effects of the organic acids produced by *L. brevis* KT38-3. Then KT38-3-CFS was filter sterilized. Catalase-free KT38-3-CFS (pH=6.5) served as the control. The indicator test bacteria including the methicillin and vancomycin-resistant (M&V-R), methicillin-resistant (M-R) and vancomycin-resistant (V-R) strains that were used in this assay are listed in Table 3. Briefly, the fresh Brain Heart Infusion broth cultures of indicator test bacteria (the final concentration was 10^8 CFU/mL) were poured and spread onto Brain Heart Infusion agar plates, the wells were bored into the agar using a sterile cork borer (6 mm in diameter). Then the 0.1 mL filter sterilized KT38-3-CFS was added to the wells. After incubation at 37°C for 24 h, the inhibition zone diameter surrounding

Table 2. The carbohydrate fermentation spectrum of *Lactobacillus brevis* KT38-3 using API 50 CHL test kits

Carbohydrates utilization of <i>L. brevis</i> KT38-3					
Glycerol	–	Inositol	–	Inulin	+
Erythritol	–	D-Mannitol	+	D-Melezitose	+
D-Arabinose	–	D-Sorbitol	+	D-Raffinose	+
L-Arabinose	+	Methyl-alpha-D-mannopyranoside	+	Amidon (starch)	–
D-Ribose	+	Methyl-alpha-D-glucopyranoside	–	Glycogen	–
D-Xylose	+	N-Acetylglucosamine	+	Xylitol	–
L-Xylose	–	Amygdalin	+	Gentiobiose	–
D-Adonitol	–	Arbutin	+	D-Turanose	+
Methyl-beta-D xylopyranoside	–	Esculin ferric citrate	+	D-Lyxose	–
D-Galactose	+	Salicin	+	D-Tagatose	+
D-Glucose	+	D-Cellobiose	+	D-Fucose	–
D-Fructose	+	D-Maltose	+	L-Fucose	–
D-Mannose	+	D-Lactose (bovine origin)	+	D-Arabitol	–
L-Sorbose	–	D-Melibiose	+	L-Arabitol	–
L-Rhamnose	–	D-Saccharose (sucrose)	+	Potassium gluconate	–
Dulcitol	–	D-Trehalose	+	Potassium 2-ketogluconate	–
				Potassium 5-ketogluconate	–

+, fermented; –, not fermented.

Table 3. The antimicrobial activity of the catalase-treated cell-free culture supernatant (KT38-3-CFS, pH=6.5) obtained from *Lactobacillus brevis* KT38-3-against the indicator test bacteria, which was determined with the agar well diffusion assay

Indicator strains	Inhibition zone diameter (in mm) of KT38-3-CFS
<i>Escherichia coli</i> (LMG 8223) ¹⁾	–
<i>Escherichia coli</i> O157:H7 (ATCC 35150) ²⁾	–
<i>Pseudomonas aeruginosa</i> (ATCC 2783) ²⁾	–
<i>Salmonella</i> sp. ³⁾	–
<i>Staphylococcus aureus</i> (ATCC 25923) ²⁾	20±0.6
<i>Micrococcus luteus</i> (NRRL 1018) ⁴⁾	23±1.0
<i>Listeria monocytogenes</i> (LMG 13305) ¹⁾	–
<i>Enterococcus faecium</i> (NRRL 2354) ⁴⁾	–
<i>Bacillus cereus</i> (LMG 8821) ¹⁾	–
<i>Bacillus subtilis</i> (NRRL NRS 744) ⁴⁾	–
<i>Staphylococcus epidermidis</i> 10.1 ⁵⁾ (M-R) ⁶⁾	17±0.6
<i>Staphylococcus warneri</i> 14.2 ⁵⁾ (M&V-R) ⁶⁾	16±1.0
<i>Staphylococcus aureus</i> 40.2 ⁵⁾ (M&V-R) ⁶⁾	–
<i>Staphylococcus haemolyticus</i> 39.1 ⁵⁾ (M&V-R) ⁶⁾	–
<i>Staphylococcus epidermidis</i> 48.2 ⁵⁾ (M&V-R) ⁶⁾	18±0.6
<i>Staphylococcus hominis</i> 9.3 ⁵⁾ (V-R) ⁶⁾	–

¹⁾ BCCM/LMG, Bacteria Collection. Laboratorium Voor Microbiologie-Universiteit Gent, Gent-Belgium.

²⁾ ATCC, American Type Culture Collection, Manassas, VA 20110-2209, USA.

³⁾ Obtained from Eskisehir Osmangazi University, Faculty of Medicine, Eskisehir-Turkey.

⁴⁾ NRRL, Agricultural Research Service, Culture Collection, Peoria. IL 61604, USA.

⁵⁾ Obtained from Anadolu University, Faculty of Science, Eskisehir-Turkey.

⁶⁾ M-R, methicillin-resistant; V-R, vancomycin-resistant; M&V-R, methicillin and vancomycin-resistant.

–, no inhibition.

the well was measured (Abanoz and Kunduhoglu, 2018). In addition, the antimicrobial effects of KT38-3-CFS (catalase-free, pH=6.5) treated with pepsin (1 mg/mL) or trypsin (1 mg/mL) were determined to show that the antimicrobial effect is due to protein-like compounds. The antimicrobial effects of KT38-3-CFS treated with pepsin or trypsin were tested on KT38-3-CFS-susceptible strains.

Antioxidant activity of KT38-3-CFS

DPPH radical scavenging activity

The antioxidant capacity of the CFS of *L. brevis* KT38-3 (KT38-3-CFS) was determined with the DPPH (1,1-diphenyl-2-picrylhydrazyl) method (Brand-Williams et al., 1995). DPPH was dissolved in methanol (60 µM). In the dark, 0.1 mL aliquots of the KT38-3-CFS were added to test tubes containing 2.9 mL of the freshly prepared DPPH radical solution, and it homogenized by shaking and incubated for 30 min. Methanol served as the blank control, and the uninoculated MRS broth served as the blank. Butylated hydroxytoluene (BHT) and ascorbic acid (100 µg/mL) were used as positive controls. The absorbance was measured at 517 nm. The radical scavenging ability of KT38-3-CFS was calculated by using the following formula:

$$\text{Activity (\%)} = (1 - A_{\text{sample}} / A_{\text{control}}) \times 100$$

where A_{sample} is the absorbance of KT38-3-CFS and A_{control} is the absorbance of the blank.

ABTS⁺ radical cation decolorization assay

The antioxidant activity of KT38-3-CFS was also determined with the ABTS (2,2'-Azino-bis[3-ethylbenzothiazoline-6-sulfonic]) radical cation decolorization assay (Re et al., 1999).

The ABTS radical cation (ABTS⁺) was prepared by mixing ABTS (7 mM) with potassium persulfate (2.45 mM), (1:1, v/v). Following the addition of 0.1 mL of the KT38-3-CFS (sample) to 0.9 mL of the ABTS⁺ solution, absorbance was measured after 1 min. The absorbance was measured at 734 nm in this assay. The positive controls and blank series were set as in the DPPH assay. The radical cation scavenging ability of KT38-3-CFS was calculated by following formula (Tripathi et al., 2007):

$$\text{Activity (\%)} = (1 - A_{\text{sample}} / A_{\text{control}}) \times 100$$

where A_{sample} is the absorbance of KT38-3-CFS, A_{control} is the absorbance of the blank after a reaction time of 1 min.

Statistical analysis

In this study, all the measurements were at least triplicated. The mean and SD of these measurements were calculated in the Excel 2010 program.

Results and Discussion

Genotypic identification of KT38-3 strain

In this study, the *in vitro* probiotic properties of the KT38-3 strain isolated from artisanal Kargi tulum cheese were investigated, and this strain was then identified by the 16S rRNA gene sequence. The sequences obtained from the KT38-3 strain were compared to the GenBank database using BLAST. The 16S rRNA sequences of the KT38-3 strain were 100% similar to the 16S rRNA sequences of the *L. brevis* MN049503.1 registered in the GenBank database. The sequence of *L. brevis* KT38 is available from NCBI under the accession number MN334210.

Some of the *L. brevis* strains are known for their probiotic potential, and a few of them are employed as starter cultures (Annuk et al., 2003). *L. brevis* is a common LAB species found in the microbiota of fermented cheeses (Guley et al., 2014/15; Mugampoza et al., 2020; Skelin et al., 2012). The isolation of the *L. brevis* KT38-3 strain from artisanal Kargi Tulum cheese is in accordance with the data in the literature. Also, many strains of this species are used for biotechnological purposes (Kaur et al., 2018; Yue et al., 2013; Zhang et al., 2012). Due to being a member of the microbiota of various traditionally fermented foods, *L. brevis* has a Generally Recognized as Safe (GRAS) status (Singh et al., 2019).

Tolerance tests

The bacteria which is to be used as probiotics must be resistant to the harsh conditions of the human digestive system. The pH in the gastrointestinal region of healthy individuals varies between 2 and 6.7 (Fallingborg, 1999). The physiological bile

salt concentration in the small intestine of a healthy individual is 0.3%. Therefore, the first feature to be tested in probiotic bacteria selection should be the resistance to gastric acidity and bile salts. In our study, the survival of *L. brevis* KT38-3 at pH 2 was very close to that of the control at pH 5.8 (Table 4). In addition, the survival of *L. brevis* KT38-3 at pH=3–7 was equal to that of the control series. Moreover, *L. brevis* KT38-3 maintained its stability over 6 h at all the bile salt concentrations tested (0.3%, 0.5%, and 1%) (Table 4). Bile salts secreted in the small intestine can damage the cell membranes of probiotic bacteria by hydrolyzing the lipids and fatty acids (Pennacchia et al., 2004). Thus, probiotic bacteria must be tolerant of bile salt. In a similar study, the survival percentage of 5 strains of *L. brevis* ranged from 33% to 64% when at pH 2.5 for 4 h. They found that the bile salt tolerance (0.3% for 4 h) of their 5 isolates was from 94% to 99% (Tokatlı et al., 2015). Kariyawasam

Table 4. The survival of *Lactobacillus brevis* KT38-3 and some biological activity test results to evaluate its probiotic potential

Probiotic characteristics of <i>L. brevis</i> KT38-3		
Survival tests:		
Survival at different pH levels (for 4 h)	pH 2	++
	pH 3	+++
	pH 4	+++
	pH 5	+++
	pH 6	+++
	pH 7	+++
	Control ¹⁾	+++
Survival at bile salts for 6 h	0.3%	+++
	0.5%	+++
	1.0%	+++
	Control ¹⁾	+++
Survival (%) in simulated gastric juice (for 4 h)	pH 2	93.0±1.2
Survival (%) in simulated gastrointestinal juice (for 6 h)	pH 7	78.0±1.5
Cell surface hydrophobicity (%)		85.0±4.2
Auto-aggregation (%)	1 h	48.3±1.3
	2 h	51.1±0.9
	4 h	59.4±0.5
Co-aggregation (%)	1 h	35.1±1.3
	2 h	36.8±0.9
	4 h	37.4±0.5
DPPH scavenging activity (%)		71.0±2.9
ABTS scavenging activity (%)		54.1±1.5
Virulence factors:		
DNase production		np
Hemolysin production		np

¹⁾ The culture of *L. brevis* KT38-3 in MRS broth (pH=5.8) was used as a growth control for survival tests. +++, good growth; ++, slightly weak growth; +, weak growth; -, no growth; np, not produced; DPPH, 1,1-diphenyl-2-picrylhydrazyl; ABTS, 2,2'-azino-bis (3-ethylbenzothiazoline-6-sulfonic).

et al. (2020) determined that the survival percentage of the *L. brevis* KU200019 strain at pH=2.5 and 0.3% bile was 99.4% and 115.1%, respectively. However, Fang et al. (2018) found that the *L. brevis* BBE-Y52 strain lost its viability 3.6 log unit after 3 h at pH 2. The difference in the pH results is an important indicator that the probiotic properties change depending on the strain.

It was determined that the number of *L. brevis* KT38-3 cells surviving in the artificial gastric juice was almost equal (93%) to the number of cells in the control group at the end of 4 h (Table 4). In addition, the *L. brevis* KT38-3 cells that survived in artificial gastric juice were transferred into the artificial intestinal fluid, then the percentage of the cells that survived after 6 h was determined. As a result, we determined that 77% of the *L. brevis* KT38-3 cells inoculated in the artificial intestinal fluid survived after 4 h (Table 4). In a similar study, the *L. brevis* CCMA1284 strain was reported to survive in artificial gastric juices at pH 2.0 (for 4 h) and artificial intestinal fluid at pH 7 (4 h) (Fonseca et al., 2021). Tokatlı et al. (2015) reported that the viability percentages of the five *L. brevis* strains in artificial gastric and intestinal fluid were 76%–99% and 42%–63%, respectively. Vecchione et al. (2018) demonstrated the survival of ten commercial probiotic formulations in artificial gastric juice (pH=1.5, for 120 min) and intestinal fluid (pH=8.0, for 360 min). As a result, they reported that the number of cells in the VSL3, Yovis and Enterogermina preparations did not change in artificial gastric fluid after 120 min, but the cell number of the other probiotic formulations decreased after the 30–120 min incubation period. While the cell number of the Enterogermina preparations in simulated intestinal fluid increased at the end of 360 min, the number of the VSL3 and Yovis formulations decreased after the 240–360 min incubation period. These *in vitro* survival tests showed that it is possible for *L. brevis* KT38-3 to survive the harsh conditions of the human digestive system.

Cell surface hydrophobicity, autoaggregation, coaggregation capability

The cell surface hydrophobicity and autoaggregation capability are the basic parameters that show the capacity of a probiotic candidate bacterium to adhere to the intestinal epithelium of the host and form biofilms (Abdulla et al., 2014; Tareb et al., 2013). In our study, the percentage of the cell surface hydrophobicity of *L. brevis* KT38-3 was 85.0%, and its autoaggregation capacity was 59.4% (Table 4). Fonseca et al. (2021) determined that the autoaggregation percentage of the *L. brevis* CCMA 1284 was 22.09%. Somashekaraiah et al. (2019) reported that the hydrophobicity and autoaggregation capacity of the *L. brevis* MYSN 106 strain were 77.82% and 75.95%, respectively. Meira et al. (2012) reported the hydrophobicity level of the *L. brevis* SM-A and *L. brevis* SM-B strains as 88.0% and 34.6%, respectively. They determined the autoaggregation ability of the *L. brevis* SM-A and *L. brevis* SM-B strains as 45.2% and 41.9%, respectively. The hydrophobicity of the four *L. brevis* strains was determined by Vasice et al. (2018), and it ranged from 28%–76%.

The ability of probiotic cells to co-aggregate with pathogenic cells is a feature that increases their probiotic usefulness. Campana et al. (2017) reported a correlation between the autoaggregation and coaggregation properties of their strains. In our study, *L. brevis* KT38-3 also showed good coaggregation and autoaggregation ability. The coaggregation percentage of *L. brevis* KT38-3 with *E. coli* O157:7 was 47.4% (Table 4). Kariyawasam et al. (2020) reported that the coaggregation percentage for *L. brevis* KU200019 and *E. coli* O157:H4 FRIK 125 was 32.7%. Fonseca et al. (2021) determined that the coaggregation percentage of *L. brevis* CCMA 1284 with the enteropathogenic *E. coli* was 2.39%. Ramos et al. (2013) reported that the coaggregation capacities of *L. brevis* FFC199 and *L. brevis* SAU105 with *E. coli* JM109 were 1.1% and 28.1%, respectively. The different percentages of hydrophobicity, autoaggregation and coaggregation that were obtained from different *L. brevis* strains showed, once again, that probiotic characteristics are strain specific.

Antimicrobial activity of KT38-3-CFS

Bacteriocins are antimicrobial peptides ribosomally synthesized by bacteria. The bacteriocin production characteristic is an important criterion in the selection of probiotic strain candidates (Dobson et al., 2012). Many studies have reported the antagonistic effect of bacteriocins on the bacteria that cause various systemic urogenital, gastrointestinal, respiratory and skin infections, including bacteria with multiple antibiotic resistance (Dicks et al., 2011). Therefore, the inhibitory effect has been tested for KT38-3-CFS against various indicator test bacteria (Table 3). The LAB produces organic acids that have an antimicrobial effect and postbiotics, such as H_2O_2 , in the environment in which they grow. For this reason, by adding catalase enzyme to CFS and neutralizing the pH, the inhibitory effect of H_2O_2 and organic acids became negligible. As a result, the CFS of *L. brevis* KT38-3 showed an antimicrobial effect against *S. aureus* (ATCC 25923) and *M. luteus* (NRRL 1018). In addition, CFS showed an inhibitory effect against *S. epidermidis* 10.1 (M-R), *S. epidermidis* 48.2 (M&V-R) and *S. warneri* 14.2 (M&V-R). The antimicrobial activity of KT38-3-CFS was lost after treatment with pepsin and trypsin enzymes (Fig. 2). This finding suggests that the antimicrobial effect is due to a protein/peptide substance(s). In our previous study, the supernatant obtained from the *L. brevis* KT16-2 strain was found to have a broader antimicrobial activity spectrum, including activity against M-R *S. epidermidis* and M&V-R *S. warneri* (Kunduhoglu and Hacıoglu, 2021). Silva et al. (2019) determined that the *L. brevis* A6, B16 and E35 strains produce bacteriocin-like antimicrobial peptides against *Escherichia coli*, *Enterococcus faecalis*, *L. monocytogenes*, *Salmonella Typhimurium* and *Shigella flexneri*. However, Fonseca et al. (2021) reported that the *L. brevis* CCMA 1284 strain had no antimicrobial effect on any indicator test bacteria such as *E. coli* CDC 055, *B. cereus* ATCC 14579, *S. aureus* ATCC 5674 and *L. monocytogenes* ATCC 19117.

Antioxidant activity of KT38-3-CFS

The antioxidant potential of the CFS obtained from *L. brevis* KT38-3 was tested by the DPPH and ABTS methods. In our study, DPPH radical scavenging capacity was calculated as 54.9%. The ABTS scavenging activity of *L. brevis* KT38-3 was 48.7% (Table 4). In our previous study, *L. brevis* KT16-2 had a DPPH scavenging activity of 71.0% and an ABTS scavenging activity of 54.1% (Kunduhoglu and Hacıoglu, 2021). Jang et al. (2019) reported that the DPPH scavenging activity of the *L. brevis* KU15153 strain was 44.1%. Somashekaraiah et al. (2019) determined that the hydroxyl radical scavenging activity of their *L. brevis* strain was 77.9%. In another study, the linoleic acid inhibition percentage of the *L. brevis* SM-A and *L. brevis* SM-B strains were 26% and 32%, respectively (Meira et al., 2012). Strain specific factors such as the bacterial cell wall composition, enzyme activity and metabolite production have effects on the antioxidant activity (Jang

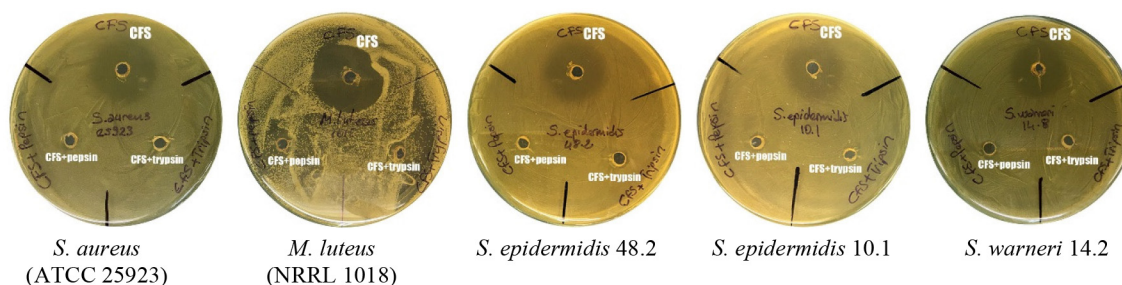


Fig. 2. The antimicrobial effect of KT38-3-CFS (pH=6.5) treated with pepsin (1 mg/mL) or trypsin (1 mg/mL) against indicator test bacteria was determined by the agar well method. CFS, cell free extract of *Lactobacillus brevis* KT38-3; CFS + pepsin, pepsin treated cell free extract of *L. brevis* KT38-3; CFS + trypsin, trypsin treated cell free extract of *L. brevis* KT38-3.

et al., 2019). Considering the results, *L. brevis* KT38-3, which shows antioxidant activity *in vitro*, is promising as a probiotic. However, its antioxidant activity should also be supported by *in vivo* experiments.

Carbohydrate fermentation and enzyme profile of *L. brevis* KT38-3

Bacteria that are used as probiotics are expected to not produce enzymes such as α -chymotrypsin, β -glucuronidase or N-acetyl- β -glucosaminidase, which are associated with intestinal diseases (de Melo Pereira et al., 2018). The increases in β -glucuronidase levels in feces is thought to be associated with gastric cancer and inflammatory bowel disease (Jang et al., 2019). API ZYM tests showed that the enzyme spectrum of *L. brevis* KT38-3 was quite broad (Table 1). *L. brevis* KT38-3 had a high level of β -galactosidase activity. This means that *L. brevis* KT38-3 could be beneficial for individuals with lactose intolerance. Additionally, *L. brevis* KT38-3 did not produce α -chymotrypsin, β -glucuronidase, or N-acetyl- β -glucosaminidase. Similar to our study, it was determined that the *L. brevis* S82 strain had high aminopeptidase, β -galactosidase and β -glucosidase enzyme activity but not β -glucuronidase enzyme activity (Abouloifa et al., 2020). In addition, Kariyawasam et al. (2020) reported that *L. brevis* KU200019 and *L. brevis* ATCC 148691 did not show the enzymatic activities associated with intestinal diseases.

The carbohydrate fermentation profile of *L. brevis* KT38-3 was determined with an API 50CHL test kit (Table 2). *L. brevis* KT38-3 was able to ferment 26 carbohydrates, including low-digestible carbohydrates such as mannitol, sorbitol and inulin (Grabitske and Slavin, 2009). The ability of *L. brevis* KT38-3 to ferment lactose and inulin increases its probiotic potential. Similar to our results, Meira et al. (2012) determined that the *L. brevis* SM-A and *L. brevis* SM-B strains ferment lactose, and their β -galactosidase enzyme activities were 600 and 300 Miller Units, respectively.

Safety of *L. brevis* KT38-3

Microorganisms that are used as probiotics should not be virulent. For this reason, we examined whether *L. brevis* KT38-3 produces virulence-related enzymes such as DNase and hemolysin (Table 4). *In vitro* test results showed that this strain has no DNase or hemolytic activity. In similar studies, it has been reported that the *L. brevis* strains do not produce hemolysis and DNase enzymes (Abouloifa et al., 2020; Hasali et al., 2018; Pavli et al., 2016; Somashekaraiah et al., 2019). However, these phenotypic tests do not indicate the absence of the transferable virulence genes in the genome of a bacterium. Therefore, these results should be supported by further genotypic assays.

Antibiotic susceptibility *L. brevis* KT38-3

Probiotic bacteria should not carry antibiotic resistance genes that are transferred horizontally because antibiotic resistance genes can be transferred to bacteria in the gastrointestinal microbiota. Therefore, we wanted to determine the sensitivity of *L. brevis* KT38-3 to some therapeutic antibiotics. The sensitivity of *L. brevis* KT38-3 to some therapeutic antibiotics, according to the breakpoints of CLSI (2017); susceptible (S), moderate (I), or resistant (R). As a result, it was determined that *L. brevis* KT38-3 was sensitive to all tested antibiotics except streptomycin (I), erythromycin (I), gentamicin (I) and nalidixic acid (R) (Fig. 1). Results from studies on the antibiotic sensitivity of the different *L. brevis* strains showed that the sensitivity was strain-specific (Fang et al., 2018; Fonseca et al., 2021; Jamaly et al., 2011; Pavli et al., 2016; Silva et al., 2019; Somashekaraiah et al., 2019). However, it must be shown genotypically whether they carry transferable antibiotic resistance genes or not.

Conclusion

It is difficult to find a probiotic strain with all the desired properties. However, our *L. brevis* KT38-3 strain has many of the essential probiotic characteristics. This strain is able to survive in low pH levels, bile salts, and artificial gastric and intestinal juice. Also, the bacteriocin-like substance/s produced by *L. brevis* KT38-3 showed antimicrobial activity against some pathogens including the methicillin and/or vancomycin-resistant strains that were used. *L. brevis* KT38-3 had an antioxidant effect, autoaggregation, coaggregation and capacity for hydrophobicity. It was also sensitive to most of antibiotics used in this study. Moreover, it did not produce DNase and the hemolysin enzymes, but it did have β -Galactosidase activity that ferment lactose. Therefore, considering these *in vitro* probiotic properties, *L. brevis* KT38-3 is a promising strain and has the potential to be used as a probiotic supplement. Supporting these features with *in vivo* experiments to evaluate their potential health benefits will be the subject of our future work.

Conflicts of Interest

The authors declare no potential conflicts of interest.

Acknowledgements

The Scientific Research Projects Commission (BAPK) of Eskişehir Osmangazi University supported this study (Project number: 202019D14). *L. brevis* KT38-3 is one of the strains used by Seda Hacıoğlu in her master's thesis.

Author Contributions

Conceptualization: Kunduhoglu B. Methodology: Hacıoğlu S, Kunduhoglu B. Software: Hacıoğlu S. Investigation: Hacıoğlu S, Kunduhoglu B. Writing - original draft: Kunduhoglu B. Writing - review & editing: Hacıoğlu S, Kunduhoglu B.

Ethics Approval

This article does not require IRB/IACUC approval because there are no human and animal participants.

References

- Abanoz HS, Kunduhoglu B. 2018. Antimicrobial activity of a bacteriocin produced by *Enterococcus faecalis* KT11 against some pathogens and antibiotic-resistant bacteria. *Korean J Food Sci Anim Resour* 38:1064-1079.
- Abdulla AA, Thikra AA, Saeed AM. 2014. Adhesion, autoaggregation and hydrophobicity of six *Lactobacillus* strains. *Br Microbiol Res J* 4:381-391.
- Abouloifa H, Rokni Y, Bellaouchi R, Ghabbour N, Karboune S, Brasca M, Salah RB, Chihib NE, Saalaoui E, Asehrou A. 2020. Characterization of probiotic properties of antifungal *Lactobacillus* strains isolated from traditional fermenting green olives. *Probiotics Antimicrob Proteins* 12:683-696.
- Annuk H, Shchepetova J, Kullisaar T, Songisepp E, Zilmer M, Mikelsaar M. 2003. Characterization of intestinal lactobacilli as putative probiotic candidates. *J Appl Microbiol* 94:403-412.

- Bintsis T. 2018. Lactic acid bacteria as starter cultures: An update in their metabolism and genetics. *AIMS Microbiol* 4:665-684.
- Brand-Williams W, Cuvelier ME, Berset C. 1995. Use of a free radical method to evaluate antioxidant activity. *LWT-Food Sci Technol* 28:25-30.
- Campana R, van Hemert S, Baffone W. 2017. Strain-specific probiotic properties of lactic acid bacteria and their interference with human intestinal pathogens invasion. *Gut Pathog* 9:12.
- Chander AM, Yadav H, Jain S, Bhadada SK, Dhawan DK. 2018. Cross-talk between gluten, intestinal microbiota and intestinal mucosa in celiac disease: Recent advances and basis of autoimmunity. *Front Microbiol* 9:2597.
- Çetinkaya A. 2005. *Yöresel peynirlerimiz*. 1st ed. Academic Book Production, Kars, Turkey. p 212.
- Clinical and Laboratory Standards Institute [CLSI]. 2017. Performance standards for antimicrobial susceptibility testing; CLSI supplement M100. 27th ed. Clinical and Laboratory Standards Institute, Wayne, PA, USA.
- de Melo Pereira GV, de Oliveira Coelho B, Magalhães Júnior AI, Thomaz-Soccol V, Soccol CR. 2018. How to select a probiotic? A review and update of methods and criteria. *Biotechnol Adv* 36:2060-2076.
- Dicks LMT, Heunis TDJ, van Staden DA, Brand A, Noll KS, Chikindas ML. 2011. Medical and personal care applications of bacteriocins produced by lactic acid bacteria. In *Prokaryotic antimicrobial peptides: From genes to applications*. Drider D, Rebuffat S (ed). Springer, New York, NY, USA. pp 391-421.
- Dobson A, Cotter PD, Ross RP, Hill C. 2012. Bacteriocin production: A probiotic trait? *Appl Environ Microbiol* 78:1-6.
- Ejiofor OS, Ajunwa OM, Ezeudu CE, Emechebe GO, Okeke KN, Ifezulike CC, Ekejindu IM, Okoyeh JN, Osuala EO, Oli AN. 2018. The bacteriology and its virulence factors in neonatal infections: Threats to child survival strategies. *J Pathog* 2018:4801247.
- Fallingborg J. 1999. Intraluminal pH of the human gastrointestinal tract. *Dan Med Bull* 46:183-196.
- Fang F, Xu J, Li Q, Xia X, Du G. 2018. Characterization of a *Lactobacillus brevis* strain with potential oral probiotic properties. *BMC Microbiol* 18:1-9.
- Florou-Paneri P, Christaki E, Bonos E. 2013. Lactic acid bacteria as source of functional ingredients. In *Lactic acid bacteria - R&D for food, health and livestock purposes*. Kongo M (ed). IntechOpen, London, UK.
- Fonseca HC, de Sousa Melo D, Ramos CL, Dias DR, Schwan RF. 2021. Probiotic properties of lactobacilli and their ability to inhibit the adhesion of enteropathogenic bacteria to Caco-2 and HT-29 cells. *Probiotics Antimicrob Proteins* 13:102-112.
- Grabitske HA, Slavin JL. 2009. Gastrointestinal effects of low-digestible carbohydrates. *Crit Rev Food Sci Nutr* 49:327-360.
- Grimoud J, Durand H, Courtin C, Monsan P, Ouarné F, Theodorou V, Roques C. 2010. *In vitro* screening of probiotic lactic acid bacteria and prebiotic glucooligosaccharides to select effective synbiotics. *Anaerobe* 16:493-500.
- Guley Z, Uysal HR, Kilic S. 2014/15. Lactic acid bacteria flora of Konya Küflü cheese: A traditional cheese from Konya province in turkey. *J Microbiol Biotechnol Food Sci* 4:238-242.
- Hasali NH, Zamri AI, Lani MN, Mubarak A. 2018. Antibiotic susceptibility, antibacterial activity and probiotic characterisation of isolated *Lactobacillus brevis* strains from *Heterotrigena itama* honey. *Malays Appl Biol* 47:105-112.
- Hawrelak JA. 2003. Probiotics: Choosing the right one for your needs. *J Aust Tradit Med Soc* 9:67-75.
- Hill C, Guarner F, Reid G, Gibson GR, Merenstein DJ, Pot B, Morelli L, Canani RB, Flint HJ, Salminen S, Calder PC, Sanders ME. 2014. The International Scientific Association for probiotics and prebiotics consensus statement on the scope and appropriate use of the term probiotic. *Nat Rev Gastroenterol Hepatol* 11:506-514.

- Jamaly N, Benjouad A, Bouksaim M. 2011. Probiotic potential of *Lactobacillus* strains isolated from known popular traditional Moroccan dairy products. *Br Microbiol Res J* 1:79-94.
- Jang HJ, Lee NK, Paik HD. 2019. Probiotic characterization of *Lactobacillus brevis* KU15153 showing antimicrobial and antioxidant effect isolated from kimchi. *Food Sci Biotechnol* 28:1521-1528.
- Kariyawasam KMGMM, Yan SJ, Lee NK, Paik HD. 2020. Probiotic properties of *Lactobacillus brevis* KU200019 and synergistic activity with fructooligosaccharides in antagonistic activity against foodborne pathogens. *Food Sci Anim Resour* 40:297-310.
- Kaur J, Sharma A, Lee S, Park YS. 2018. Molecular typing of *Lactobacillus brevis* isolates from Korean food using repetitive element-polymerase chain reaction. *Food Sci Technol Int* 24:341-350.
- Kotzamanidis C, Kourelis A, Litopoulou-Tzanetaki E, Tzanetakis N, Yiangou M. 2010. Evaluation of adhesion capacity, cell surface traits and immunomodulatory activity of presumptive probiotic *Lactobacillus* strains. *Int J Food Microbiol* 15:154-163.
- Kunduhoglu B, Hacioglu S. 2021. Probiotic potential and gluten hydrolysis activity of *Lactobacillus brevis* KT16-2. *Probiotics Antimicrob Proteins* 13:720-733.
- Kunduhoglu B, Elcioglu O, Gezgin Y, Akyol I, Pilatin S, Cetinkaya A. 2012. Genotypic identification and technological characterization of lactic acid bacteria isolated from traditional Turkish Kargi tulum cheese. *Afr J Biotechnol* 11:7218-7226.
- Meira SMM, Helfer VE, Velho RV, Lopes FC, Brandelli A. 2012. Probiotic potential of *Lactobacillus* spp. isolated from Brazilian regional ovine cheese. *J Dairy Res* 79:119-127.
- Mugampoza D, Gkatzionis K, Swift BMC, Rees CED, Dodd CER. 2020. Diversity of *Lactobacillus* species of Stilton cheese relates to site of isolation. *Front Microbiol* 11:904.
- Pavli FG, Argyri AA, Papadopoulou OS, Nychas GJE, Chorianopoulos NG, Tassou CC. 2016. Probiotic potential of lactic acid bacteria from traditional fermented dairy and meat products: Assessment by *in vitro* tests and molecular characterization. *J Probiotics Health* 4:1000157.
- Pavlov D, de Wet CME, Grabow WOK, Ehlers MM. 2004. Potentially pathogenic features of heterotrophic plate count bacteria isolated from treated and untreated drinking water. *Int J Food Microbiol* 92:275-287.
- Pennacchia C, Ercolini D, Blaiotta G, Pepe O, Mauriello G, Villani F. 2004. Selection of *Lactobacillus* strains from fermented sausages for their potential use as probiotics. *Meat Sci* 67:309-317.
- Ramos CL, Thorsen L, Schwan RF, Jespersen L. 2013. Strain-specific probiotics properties of *Lactobacillus fermentum*, *Lactobacillus plantarum* and *Lactobacillus brevis* isolates from Brazilian food products. *Food Microbiol* 36:22-29.
- Re R, Pellegrini N, Proteggente A, Pannala A, Yang M, Rice-Evans C. 1999. Antioxidant activity applying an improved ABTS radical cation decolorization assay. *Free Radic Biol Med* 26:1231-1237.
- Rosenberg M, Gutnick D, Rosenberg E. 1980. Adherence of bacteria to hydrocarbons: A simple method for measuring cell-surface hydrophobicity. *FEMS Microbiol Lett* 9:29-33.
- Salminen S, Gueimonde M. 2004. Human studies on probiotics: What is scientifically proven. *J Food Sci* 69:M137-M140.
- Silva JG, Castro RD, Sant'Anna FM, Barquete RM, Oliveira LG, Acurcio LB, Luiz LMP, Sales GA, Nicoli JR, Souza MR. 2019. *In vitro* assessment of the probiotic potential of lactobacilli isolated from Minas artisanal cheese produced in the Araxá region, Minas Gerais state, Brazil. *Arq Bras Med Vet Zootec* 71:647-657.
- Singh V, Ganger S, Patil S. 2020. Characterization of *Lactobacillus brevis* with potential probiotic properties and biofilm

- inhibition against *Pseudomonas aeruginosa*. Proceedings 66:14.
- Skelin A, Fuka MM, Majhenič AČ, Redžepović S, Samaržija D, Matijašić BB. 2012. Phenotypic and genotypic characterization of indigenous *Lactobacillus* community from traditional Istrian Ewe's cheese. Food Technol Biotechnol 50:362-370.
- Somashekaraiah R, Shruthi B, Deepthi BV, Sreenivasa MY. 2019. Probiotic properties of lactic acid bacteria isolated from Neera: A naturally fermenting coconut palm nectar. Front Microbiol 10:1382.
- Swan S. 2005. Türkiye'nin peynir hazineleri. Boyut Yayın Grubu, İstanbul, Turkey. p 144.
- Tannis A. 2008. A history of probiotics. In: Probiotic rescue: How you can use probiotics to fight cholesterol, cancer, superbugs, digestive complaints and more. Wiley & Sons, Hoboken, NJ, USA. pp 13-21.
- Tareb R, Bernardeau M, Gueguen M, Vernoux JP. 2013. *In vitro* characterization of aggregation and adhesion properties of viable and heat-killed forms of two probiotic *Lactobacillus* strains and interaction with foodborne zoonotic bacteria, especially *Campylobacter jejuni*. J Med Microbiol 62:637-649.
- Tokatlı M, Gülgör G, Bağder Elmacı S, Arslankoz İşleyen N, Özçelik F. 2015. *In vitro* properties of potential probiotic indigenous lactic acid bacteria originating from traditional pickles. BioMed Res Int 2015:315819.
- Tripathi R, Mohan H, Kamat JP. 2007. Modulation of oxidative damage by natural products. Food Chem 100:81-90.
- Vasiee A, Behbahani BA, Yazdi FT, Mortazavi SA, Noorbakhsh H. 2018. Diversity and probiotic potential of lactic acid bacteria isolated from Horreh, a traditional Iranian fermented food. Probiotics Antimicrob Proteins 10:258-268.
- Vecchione A, Celandroni F, Mazzantini D, Senesi S, Lupetti A, Ghelardi E. 2018. Compositional quality and potential gastrointestinal behavior of probiotic products commercialized in Italy. Front Med 5:59.
- Yue M, Cao H, Zhang J, Li S, Meng Y, Chen W, Huang L, Du Y. 2013. Improvement of mannitol production by *Lactobacillus brevis* mutant 3-A5 based on dual-stage pH control and fed-batch fermentations. World J Microbiol Biotechnol 29:1923-1930.
- Zárate G, Chaia AP, González S, Oliver G. 2000. Viability and β -galactosidase activity of dairy propionibacteria subjected to digestion by artificial gastric and intestinal fluids. J Food Prot 63:1214-1221.
- Zielińska D, Kolożyn-Krajewska D. 2018. Food-origin lactic acid bacteria may exhibit probiotic properties: Review. BioMed Res Int 2018:5063185.
- Zhang Y, Song L, Gao Q, Yu SM, Li L, Gao NF. 2012. The two-step biotransformation of monosodium glutamate to GABA by *Lactobacillus brevis* growing and resting cells. Appl Microbiol Biotechnol 94:1619-1627.