

Assessing alignment-based taxonomic classification of ancient microbial DNA

Raphael Eisenhofer^{1,2} and Laura Susan Weyrich^{1,2}

¹ Australian Centre for Ancient DNA, University of Adelaide, Adelaide, SA, Australia

² Centre of Excellence for Australia Biodiversity and Heritage, University of Adelaide, Adelaide, SA, Australia

ABSTRACT

The field of palaeomicrobiology—the study of ancient microorganisms—is rapidly growing due to recent methodological and technological advancements. It is now possible to obtain vast quantities of DNA data from ancient specimens in a high-throughput manner and use this information to investigate the dynamics and evolution of past microbial communities. However, we still know very little about how the characteristics of ancient DNA influence our ability to accurately assign microbial taxonomies (i.e. identify species) within ancient metagenomic samples. Here, we use both simulated and published metagenomic data sets to investigate how ancient DNA characteristics affect alignment-based taxonomic classification. We find that nucleotide-to-nucleotide, rather than nucleotide-to-protein, alignments are preferable when assigning taxonomies to short DNA fragment lengths routinely identified within ancient specimens (<60 bp). We determine that deamination (a form of ancient DNA damage) and random sequence substitutions corresponding to ~100,000 years of genomic divergence minimally impact alignment-based classification. We also test four different reference databases and find that database choice can significantly bias the results of alignment-based taxonomic classification in ancient metagenomic studies. Finally, we perform a reanalysis of previously published ancient dental calculus data, increasing the number of microbial DNA sequences assigned taxonomically by an average of 64.2-fold and identifying microbial species previously unidentified in the original study. Overall, this study enhances our understanding of how ancient DNA characteristics influence alignment-based taxonomic classification of ancient microorganisms and provides recommendations for future palaeomicrobiological studies.

Submitted 30 August 2018

Accepted 9 February 2019

Published 13 March 2019

Corresponding author

Raphael Eisenhofer,
raphael.eisenhoferphilipona@
adelaide.edu.au

Academic editor

Ludovic Orlando

Additional Information and
Declarations can be found on
page 19

DOI 10.7717/peerj.6594

© Copyright

2019 Eisenhofer and Weyrich

Distributed under

Creative Commons CC-BY 4.0

OPEN ACCESS

Subjects Bioinformatics, Evolutionary Studies, Microbiology

Keywords Microbiome, Palaeomicrobiology, Ancient DNA, Bioinformatics, Alignment, Taxonomic classification, Shotgun metagenomics, Microbiology

INTRODUCTION

Palaeomicrobiology—the study of ancient microorganisms—is a rapidly growing field of research. As with modern microbiology (*Caporaso et al., 2012; The Human Microbiome Project Consortium et al., 2012*), palaeomicrobiology has witnessed a renaissance with the development of high-throughput sequencing technology (*Warinner, Speller & Collins, 2014; Weyrich, Dobney & Cooper, 2015*). The study of ancient microorganisms has the

potential to shed light on a range of topics, such as the evolution of the human microbiota (Adler *et al.*, 2013; Weyrich *et al.*, 2017), adaptation and spread of ancient pathogens (Bos *et al.*, 2011, 2014; Warinner *et al.*, 2014), the reconstruction of human migrations and interactions (Dominguez-Bello & Blaser, 2011; Maixner *et al.*, 2016; Eisenhofer *et al.*, 2017), and climate change (Frisia *et al.*, 2017).

Palaeomicrobiology is especially challenging because ancient DNA is typically fragmented, contains damage-induced substitutions, and is mixed with the DNA of ancient and modern contaminant microorganisms. DNA fragmentation occurs due to the post-mortem cessation of DNA repair, resulting in short fragment lengths that are typically shorter than 100 bp (Allentoft *et al.*, 2012; Dabney, Meyer & Pääbo, 2013). These short fragments are also subjected to chemical modifications (e.g. deamination), which yield an increased rate of observed cytosine to thymine and guanine to adenine substitutions at the 5' and 3' ends of the sequenced DNA molecules, respectively (Dabney, Meyer & Pääbo, 2013). Finally, contamination of ancient DNA with modern microbial DNA is a serious issue that must be mitigated with expensive ultra-clean laboratories, rigorous decontamination, and the extensive use of extraction blank and no-template negative controls (Salter *et al.*, 2014; Eisenhofer, Cooper & Weyrich, 2017; Llamas *et al.*, 2017; Eisenhofer & Weyrich, 2018; Eisenhofer *et al.*, 2019). Collectively, these factors influence the choice of molecular techniques (Ziesemer *et al.*, 2015) and bioinformatic tools used for taxonomic classification of ancient microbial DNA (Weyrich *et al.*, 2017; Velsko *et al.*, 2018).

Identifying the microbial species present within an ancient sample, that is, taxonomic classification, is a standard first step in palaeomicrobiology studies (Weyrich *et al.*, 2017). Initially, targeted amplification of the 16S ribosomal RNA encoding gene was used to discover which microbes were present in ancient samples (Adler *et al.*, 2013), as is routinely done in modern microbiota studies seeking to characterize microbial communities (Caporaso *et al.*, 2012; Gilbert, Jansson & Knight, 2014). However, these targeted regions are often longer than the typical fragment length of ancient DNA and can contain polymorphisms that bias the taxonomic reconstruction of ancient metagenomes (Ziesemer *et al.*, 2015). Considering these findings, the palaeomicrobiology field has converged on shotgun sequencing as the best-practice approach to reproducibly identify microbial species within ancient samples. While currently more expensive than the targeted PCR approaches, shotgun sequencing also provides genomic and functional information that can be used to reconstruct ancient microbial genomes, observe functional changes through time, and identify non-prokaryotic information within samples (Warinner *et al.*, 2014; Weyrich *et al.*, 2017).

Methods for analysing shotgun sequencing data broadly fall into three categories: assembly-based, alignment-free, and alignment-based. Assembly-based techniques involve merging overlapping DNA fragments into longer sequences with the goal of assembling whole genomes. Such techniques have been successful in generating new genomes from modern metagenomic samples (Imelfort *et al.*, 2014; Parks *et al.*, 2017). However, the short, damaged nature of ancient DNA renders assembly-based techniques currently intractable for palaeomicrobiology. Alignment-free methods use features of

the DNA sequences themselves, such as matches of k -mers between reference genomes and the DNA sequences from a sample (Wood & Salzberg, 2014; Ounit & Lonardi, 2016). To our knowledge, there has been minimal testing of alignment-free methods for the taxonomic classification of ancient microbial DNA. In their assessment of taxonomic classifiers for ancient DNA, Velsko *et al.* (2018) tested the alignment-free method CLARK-S and found that while it had no false-negatives on their simulated metagenome, it had the highest number of misclassifications and false-positives. Alignment-based techniques involve the alignment of DNA fragments to previously characterized reference sequences using alignment algorithms, such as Bowtie2 or the Burrows–Wheeler Aligner (Li & Durbin, 2009; Langmead & Salzberg, 2012), and include MetaPhlAn (Truong *et al.*, 2015), MG-RAST (Meyer *et al.*, 2008), DIAMOND (Buchfink, Xie & Huson, 2015), and MALT (MEGAN alignment tool) (Vågene *et al.*, 2018). A recent study benchmarked these alignment based tools and found that MALT performed better for short, fragmented DNA (Weyrich *et al.*, 2017). MALT is an alignment-based tool that allows researchers to query DNA sequences against reference databases using a method similar to Basic Local Alignment Search Tool (BLAST) (Altschul *et al.*, 1990), albeit >100 times faster (Vågene *et al.*, 2018). MALT can either align nucleotide sequences to nucleotide databases (MALTn) or nucleotide to amino acid databases by translating the DNA prior to alignments (MALTx). A potential advantage to using amino acid alignments for palaeomicrobiology is the greater sequence conservation of peptides due to codon redundancy. This property may help smooth over small changes occurring in DNA sequence over time, allowing ancient sequences to be more easily aligned to modern references. However, the already short nature of ancient DNA yields even shorter amino acid sequences (e.g. 60 bp DNA translated = 20 amino acid sequence), which may not provide a sufficiently high alignment score for taxonomic classification (Huson *et al.*, 2007; Pearson, 2013). Additionally, DNA damage can result in alignment errors, further lowering alignment scores. To date, there has been no formal testing of nucleotide vs. amino acid alignments for taxonomically classifying short sequences typical of ancient DNA.

Here, we test how characteristics of ancient DNA influence alignment-based taxonomic classification using both simulated and published ancient DNA data sets. We demonstrate that the MALTn (nucleotide-to-nucleotide alignment) approach can improve taxonomic identifications over MALTx (nucleotide-to-protein). We also corroborate previous findings that deamination minimally impacts alignment-based taxonomic classification and that reference database choice is an important consideration when attempting to reconstruct ancient microbial communities (Warinner *et al.*, 2017; Velsko *et al.*, 2018). Finally, we perform an extensive reanalysis of previously published shotgun DNA sequences from ancient dental calculus with these factors in mind.

METHODS

Simulated and published metagenomes

We downloaded 6,897 complete bacterial genomes from the NCBI Assembly (17th May 2017). A total of 29 oral and environmental genomes were used as input for

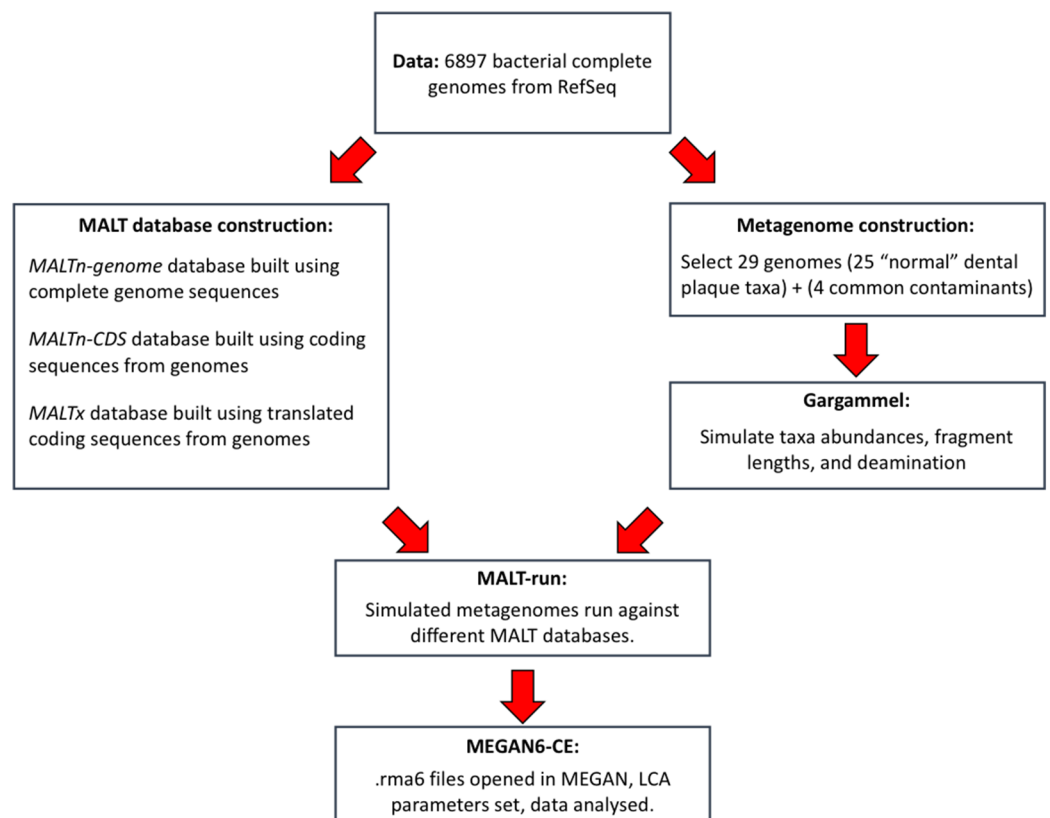


Figure 1 General overview of simulated data construction and analysis.

Full-size DOI: 10.7717/peerj.6594/fig-1

Gargammel (Renaud *et al.*, 2017) to generate simulated ancient metagenomes of 1.5 million fragmented sequences each. Briefly, selected bacterial genomic sequences were assigned abundances representative of a typical dental plaque community (Table S1) and then fragmented into metagenomes containing either strict 30, 50, 70, 90 bp (base pair) fragments, or an empirical ancient DNA fragment length distribution that mimicked commonly observed ancient DNA fragmentation ($-\text{loc } 4, -\text{scale } 0.3$ in Gargammel) (Fig. S1; Fig. 1) (Renaud *et al.*, 2017). To benchmark the influence of deamination on taxonomic classification, the simulated metagenomes of different fragment lengths were then deaminated using Gargammel with the following parameters: nick frequency = 0.03, length of overhanging ends (geometric parameter) = 0.25, probability of deamination in double-stranded parts = 0.01, along with three different probabilities of deamination in single-stranded parts: zero for 0% δ_s ; 0.1 for light deamination (10% δ_s); and 0.5 for heavy deamination (50% δ_s) (Briggs *et al.*, 2007). Additionally, a real mapDamage profile from the LaBranca sample (Renaud *et al.*, 2017) was simulated using Gargammel for the ‘empirical’ deamination ($\sim 20\%$ δ_s). Overall, this resulted in a total of 20 different simulated metagenomes: (five different fragment lengths, 30, 50, 70, 90, and empirical) multiplied by four different deamination magnitudes (0%, 10%, 20%, and 50% δ_s) = 20 (Metagenome 1–20; Table S2).

Simulated metagenomes and the genomes used to build the metagenomes are available via Figshare: <https://doi.org/10.25909/5b84c9c196f54>, <https://doi.org/10.4225/55/5b0caf73b7247>, <https://doi.org/10.4225/55/5b0ca9b2cd6dc>. The collapsed (merged) DNA sequences for 22 published ancient dental calculus samples were downloaded from Online Ancient Genome Repository (<https://www.oagr.org.au/experiment/view/65/>) (Weyrich *et al.*, 2017). Two ancient dental calculus samples from Warinner *et al.* (2014) were also downloaded from the SRA (SRR957739 and SRR957743).

Reference databases

For the analysis of simulated metagenomes, we created databases that contained the exact same bacterial genomes present in the 20 simulated data sets. We downloaded 6,897 complete bacterial genomes from the NCBI Assembly (17th May 2017), along with their coding sequences (CDS) and translated CDS. These three sources of sequences were used to construct different MALT databases: MALTn-genome (complete genomes); MALTn-CDS (nucleotide coding sequencing from these genomes); and MALTx (translated CDS from these genomes).

For the analysis of previously published dental calculus data, we used sequences from the four following databases: (1) 2014nr (NCBI non redundant protein BLAST database, downloaded 11th November 2014; (Weyrich *et al.*, 2017)); 2017nt (NCBI nucleotide BLAST database, downloaded 6th June 2017); (3) HOMD (all human oral microbial genomes (1,362) from the Human Oral Microbiome Database, downloaded July 2017); and (4) RefSeqGCS (47,713 Complete-, Chromosome-, and Scaffold-level assemblies downloaded from NCBI RefSeq database (366 archaeal; 47,347 bacterial)). Genome accessions used for the RefSeqGCS and HOMD databases are available from Figshare (<https://doi.org/10.25909/5b84ddf58ac49>, <https://doi.org/10.25909/5b84d19aaff2a>).

Generation of divergent sequences

Nucleotide substitution rates are known to differ between different species of bacteria, making accurate modelling of bacterial genome evolution is a difficult task. Here, we apply a simplified approach that ignores insertions and deletions, and instead creates a worst-case scenario for benchmarking the effects of nucleotide substitutions on taxonomic classification. We chose a rate of 10^{-7} substitutions per site per year, representing the mean of known evolutionary rates for bacterial genomes (Duchêne *et al.*, 2016).

We assumed an average bacterial genome size of three million bp, thus $10^{-7} \times 3,000,000 = 0.3$ substitutions per genome per year. Scaling for multiple years yielded the following number of substitutions introduced per genome: 10,000 years = 3,000 substitutions (0.1% of genome); 30,000 substitutions (1% of genome); and 300,000 substitutions (10% of genome). We used these numbers to randomly mutate (substitutions only) the bacterial genomes using EMBOSS msbar (Rice, Longden & Bleasby, 2000). These 'mutated' genomes were then used as input for Gargammel, fragmented to the empirical ancient DNA fragment length distribution (Fig. S1), and deaminated using the heavy deamination magnitude (50% δ_s) (Metagenome 21–23, Table S2).

Data analysis

MALT-build v 0.3.8 was used on the reference sequences mentioned above with the default parameters. MALT-run v 0.3.8 was used to align the simulated and real data against the different databases using default settings and outputting BLAST text files (-a). The resulting BLAST text files were converted to RMA6 files using the MEGAN tool blast2rma, as this allows least common ancestor (LCA) parameter adjustment across multiple files. All RMA6 files were then imported and analysed in MEGAN6 CE V6.8.13 (Huson *et al.*, 2016). We used the weighted LCA algorithm (80% LCA percentage: -alg weighted -lcp 80) (Huson *et al.*, 2016); the minimum support percent filter was set to 0.1% (-supp 0.1) for the published ancient dataset to remove poorly supported assignments (i.e. taxonomic assignments require at least 0.1% of a percent of the total sequences to be considered), and 0.01% for the simulated metagenomes; the minimum expected value (*E*-value) was set to 0.01 (*-e* 0.01); and all other values were left at default. Analysis of the simulated data found that a minimum support percent of 0.1% removed false positive taxonomic assignments for nucleotide-to-nucleotide alignments (Fig. S15), justifying this threshold for the reanalysis of the previous published data. Little research has been done regarding the effect of LCA parameters on taxonomic classification, and such research deserves its own study. Regardless, the parameters chosen for this study represent a conservative approach implemented to reduce noise within the data set.

For the UPGMA tree comparison, species found in extraction blank controls (Table S9), but not environmental controls, were removed (filtered) from the ancient dental calculus samples (Weyrich *et al.*, 2017). This filtering approach can be conservative and does not eliminate issues of cross-contamination between samples and controls occurs (Eisenhofer *et al.*, 2019). However, the lack of oral taxa classified in the extraction controls makes it unlikely to have affected the downstream analyses. (Table S9). The UPGMA tree was then constructed by exporting the Bray–Curtis distance matrices constructed at the species level from MEGAN6 into SplitsTree4 (Huson & Bryant, 2006). The divergences between predicted and simulated abundances were calculated using log-odds scores: $\log \text{odds} = \log_2 (\text{predicted abundance} / \text{simulated abundance})$ and the Pearson correlation coefficient.

RESULTS

MALN classifies shorter DNA sequences than MALTx

We assessed the alignment performance of nucleotide-to-nucleotide (MALN) and nucleotide-to-protein (MALTx) alignments using simulated metagenomes that mimic the characteristics of ancient DNA (Fig. S1). When comparing the differences between nucleotide or protein alignments on the empirical fragment length distribution simulated metagenome, MALN-CDS (CDS only) classified 5.55-fold more total sequences than MALTx (protein translation of CDS only) (Fig. 2). We investigated this phenomenon further by assessing nucleotide and protein alignments using simulated metagenomes with strict fragment lengths (30, 50, 70, and 90 bp). MALTx analysis was unable to align sequences from the 30 to 50 bp simulated metagenomes and only aligned 33% of sequences from the 70 bp simulated metagenome (Table 1). In contrast, MALN-CDS aligned 86% of sequences at 30 bp (Table 1). As nucleotide alignments additionally provide the

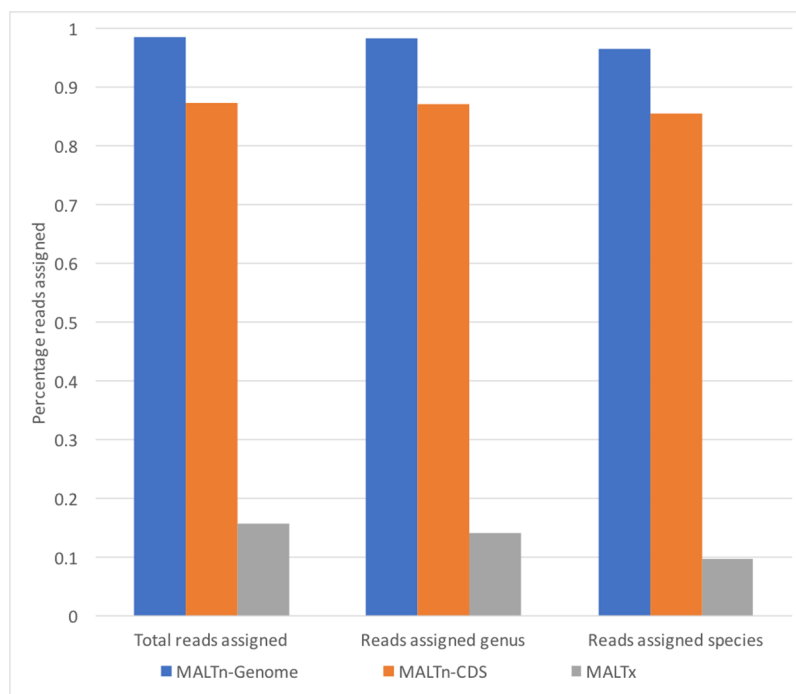


Figure 2 Percentage of reads assigned taxonomy using simulated metagenomes of empirical ancient DNA fragment length against different MALT databases. Full-size [DOI: 10.7717/peerj.6594/fig-2](https://doi.org/10.7717/peerj.6594/fig-2)

Table 1 Percentages of total reads assigned at different taxonomic levels with different read length cut-offs.

Fragment length	Reads assigned total	Reads assigned genus	Reads assigned species
30 bp_MALTn-Genome	100	100	97
30 bp_MALTn-CDS	86	86	83
30 bp_MALTx	0	0	0
50 bp_MALTn-Genome	100	100	98
50 bp_MALTn-CDS	88	88	86
50 bp_MALTx	0	0	0
70 bp_MALTn-Genome	100	100	98
70 bp_MALTn-CDS	90	90	88
70 bp_MALTx	33	31	25
90 bp_MALTn-Genome	100	100	98
90 bp_MALTn-CDS	91	91	89
90 bp_MALTx	82	75	55
Empirical_MALTn-Genome	99	98	97
Empirical_MALTn-CDS	87	87	86
Empirical_MALTx	16	14	10

additional opportunity to identify non-coding sequences, we also compared nucleotide alignments to full genomes, rather than CDS. Nucleotide alignments including non-coding sequences (MALTn-genome) were able to classify 6.19-fold more total sequences

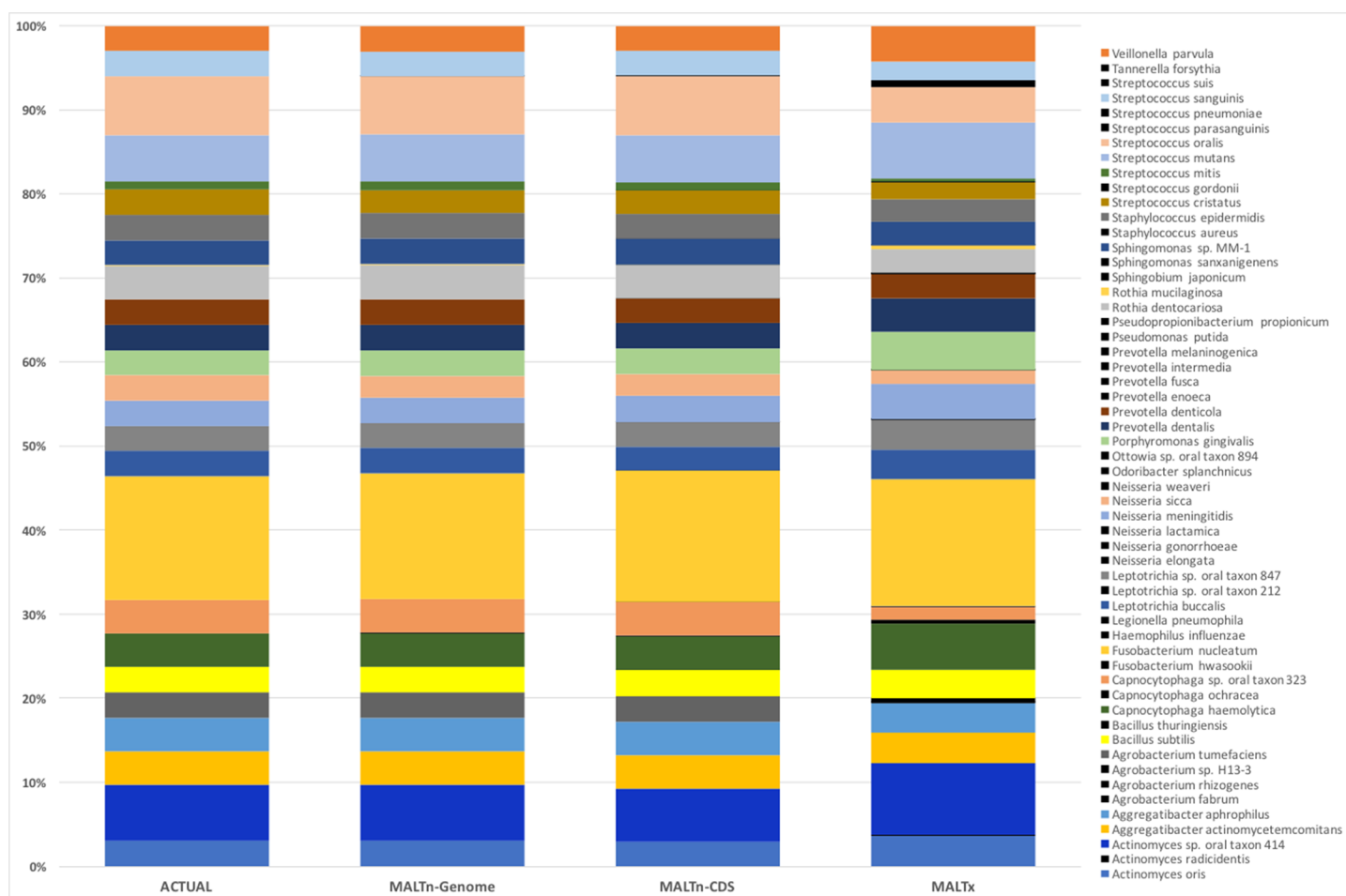


Figure 3 Species level taxonomic classification of empirical fragment length simulated metagenome. Species coloured black were not used as input for constructing the simulated metagenomes and are misclassifications. [Full-size !\[\]\(5fd6ef84f97f42d7f8b34275f1b65312_img.jpg\) DOI: 10.7717/peerj.6594/fig-3](https://doi.org/10.7717/peerj.6594/fig-3)

than MALTx for the empirical fragment length distribution (sevenfold and 9.7-fold more sequences at the genus and species level, respectively) (Fig. 2; Table 1).

MALn taxonomic classifications are more accurate than MALTx

While MALn can classify more sequences than MALTx, the accuracy of these assignments has not yet been examined. We tested the accuracy of these assignments by comparing them to the ‘ground truth’ (i.e. the actual composition of the simulated metagenomes). Overall, MALn more accurately reconstructed the simulated, empirical fragment length metagenome composition than MALTx (0.998; Pearson correlation; -0.48 sum of log-odds scores between MALn-CDS and actual metagenome) (Fig. 3). Even though sequences below 50 bp were not classified, MALTx was able to faithfully reconstruct the simulated metagenome, albeit with poorer abundance predictions compared to nucleotide classifications (0.943; Pearson correlation and -6.66 sum of log-odds scores between MALTx and actual metagenome) (Fig. 3). MALTx misclassified more sequences, resulting in 24 taxa being falsely predicted, whereas only 11 taxa were misclassified using nucleotide

Table 2 Effects of deamination on taxonomic classification of empirical ancient DNA read-length distribution.

Fragment length	Reads assigned total (%)	Reads assigned genus (%)	Reads assigned species (%)
MALn-genome_0δs	98.6	98.4	96.6
MALn-genome_10δs	98.4	98.2	96.5
MALn-genome_20δs	98.5	98.3	96.5
MALn-genome_50δs	97.7	97.5	95.7
MALn-CDS_0δs	87.4	87.1	85.5
MALn-CDS_10δs	87.2	86.9	85.3
MALn-CDS_20δs	87.2	86.9	85.3
MALn-CDS_50δs	86.5	86.2	84.6
MALx_0δs	15.8	14.2	9.7
MALx_10δs	15.2	13.7	9.4
MALx_20δs	15.0	13.6	9.2
MALx_50δs	14.5	13.1	8.9

(MALn-CDS) (Table S3). By increasing the minimum support percent from 0.01 to 0.1, these false predictions were eliminated for MALn-genome and MALn-CDS and reduced to 3 for MALx (Fig. S15). Additionally, classification accuracy with nucleotide alignments was not impacted by fragment length, as MALn accurately classified sequences as short as 30 bp (Figs. S2 and S3).

We also tested how non-coding sequences can impact the accuracy of taxonomic identifications. The addition of non-coding sequences to the reference database had a limited effect on the accuracy of taxonomic classifications, as the MALn-genome classifications were almost identical to MALn-CDS (0.999; Pearson correlation between MALn-genome and MALn-CDS) (Fig. 3); however, fewer misclassifications at the species level were identified using MALn-genome (11 species for MALn-CDS vs. two species for MALn-genome). Overall, these results suggest that MALn classifications are more accurate than MALx both in providing fewer misclassifications and by providing more accurate abundance predictions. Additionally, it appears that including non-coding information in reference databases (e.g. MALn-genome) may also reduce misclassifications.

Deamination minimally affects alignment-based classification

We next tested the effects of deamination (a commonly observed form of ancient DNA damage) on alignment-based taxonomic classification. We tested three scenarios of deamination: light (10% δ_s), moderate (~20% δ_s), and heavy (50% δ_s) (Table 2). Using the empirical fragment length distribution, heavy deamination did not substantially impact the number of sequences using MALn (0.9% loss of sequences assigned at the species level for and MALn-genome; 1.3% for MALn-CDS; and 9.2% for MALx) (Table 2). As expected, lower magnitudes of deamination had an even smaller impact (Table 2). We also assessed the impacts of heavy deamination on the assignment of DNA sequences of different lengths. Shorter (30 bp) sequences were more affected for nucleotide

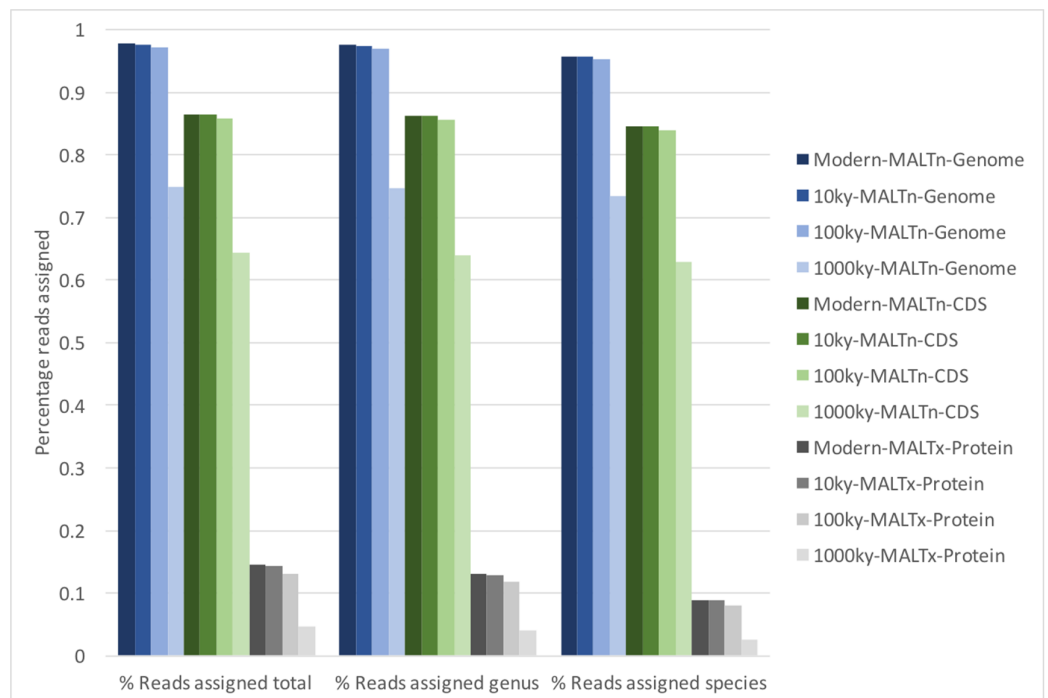


Figure 4 Percentage of reads assigned taxonomy using divergent and deaminated simulated metagenomes of typical ancient DNA fragment length. [Full-size](#) DOI: [10.7717/peerj.6594/fig-4](https://doi.org/10.7717/peerj.6594/fig-4)

alignments (9.53% loss of sequences assigned at the species level for MALTn-genome, 8.41% for MALTn-CDS; no alignments for MALTx), but this effect was not observed for sequences longer than 50 bp (Tables S4–S6). Regarding taxonomic composition of the empirical read length metagenomes, heavy deamination did not substantially increase the percentage of misclassifications at the species level (0.06–0.07% for MALTn-genome, 0.29–0.30% for MALTn-CDS, and 2.42–2.48% MALTx). Deamination also did not substantially affect taxonomic composition (Figs. S4–S6). Overall, these results corroborate previous findings that deamination minimally affects alignment-based taxonomic classification (Velsko *et al.*, 2018).

The influence of sequence divergence on taxonomic classification

The effects of sequence divergence on alignment-based taxonomic classification have not yet been explored. To this end, we created divergent simulated metagenomes by introducing random substitution mutations into the same reference genomes used in the above experiments. We chose three different divergence magnitudes: 0.1% sequence divergence (equating to roughly 10ky (1,000 years) of evolution), 1% (100ky), and 10% (1,000ky), and added heavy (50% δ_s) deamination, allowing us to examine the worst-case impacts of sequence divergence on taxonomic classification. Overall, MALTn-genome, MALTn-CDS, and MALTx were able to effectively assign taxonomy with minimal loss of alignments (<1% of sequences were unable to be aligned) at 0.1% and 1% sequence divergence (Fig. 4). At 10% divergence (1,000ky), the influence of divergence was more pronounced, as the percentage of sequences not assigned

taxonomically (i.e. sequences with no alignments) increased from 2.28% to 25.1% for MALTn-genome, 13.48% to 35.7% for MALTn-CDS, and 85.45% to 95.4% for MALTx. Even with the loss of sequences assigned with 10% divergence, the taxonomic classifications and abundances remained relatively stable (Figs. S7 and S8), although protein alignments were more affected (0.944 Pearson correlation coefficient between 1,000ky composition and actual simulated metagenome composition for MALTn-genome; 0.944 for MALTn-CDS; and 0.825 for MALTx). As expected, shorter sequences were more affected by sequence divergence and deamination (Fig. S9). Overall, our simulations suggest that random sequence divergence of less than 1% minimally affects alignment-based taxonomic classifications.

Reference database choice strongly influences taxonomic classification

Because alignment-based methods are highly reliant on reference sequences available in databases, we next sought to test the influence of database choice on taxonomic classification of ancient microbial DNA. To this end, we constructed four different reference databases from different sources: 2014nr, 2017nt, HOMD, and RefSeqGCS. The 2014nr database contains the 2014 non-redundant protein BLAST database, which was used in a recent palaeomicrobiology publication (Weyrich *et al.*, 2017) and represents the example of a database used with the MALTx method. The 2017nt database contains all sequences within the 2017 NCBI nucleotide BLAST database; this is the default for BLAST searches on the NCBI website and does not include chromosome-, scaffold-, or contig-level genome assemblies. The HOMD database contains genomic sequences from the HOMD, which is a curated nucleotide database comprised of oral-associated microbial species and includes all genome assembly levels (complete genomes, chromosomes, scaffolds, and contigs). Lastly, the RefSeqGCS possesses complete, chromosome, and scaffold level genome assembly levels from bacterial and archaeal assemblies within the NCBI RefSeq. The RefSeqGCS database also contains substantially more entries than the HOMD database (e.g. 47,713 vs. 1,362 microbial genomes for HOMD) with a broader diversity of entries (i.e. not primarily oral taxa).

We first tested these different databases on the empirical read length simulated metagenome with and without moderate deamination ($\sim 20\%$ δ_s). The 2014nr performed the worst, with skewed abundances, four false positives, and six false negatives (Fig. S10). In contrast, the 2017nt, HOMD, and RefSeqGCS more accurately recapitulated the simulated metagenome, with the exception of the HOMD, which could not assign reads to *Sphingomonas* sp. MM1 (Fig. S10).

To test the effects of these different databases on the taxonomic classification of real paleomicrobiological data, we aligned the sequences from four published dental calculus samples (three ancient, one modern) (Weyrich *et al.*, 2017) against the four databases mentioned above. As expected, the MALTx approach using the 2014nr database assigned the least number of sequences taxonomically, while the MALTn approach using the RefSeqGCS database assigned the most sequences (Fig. 5). In addition, the highest

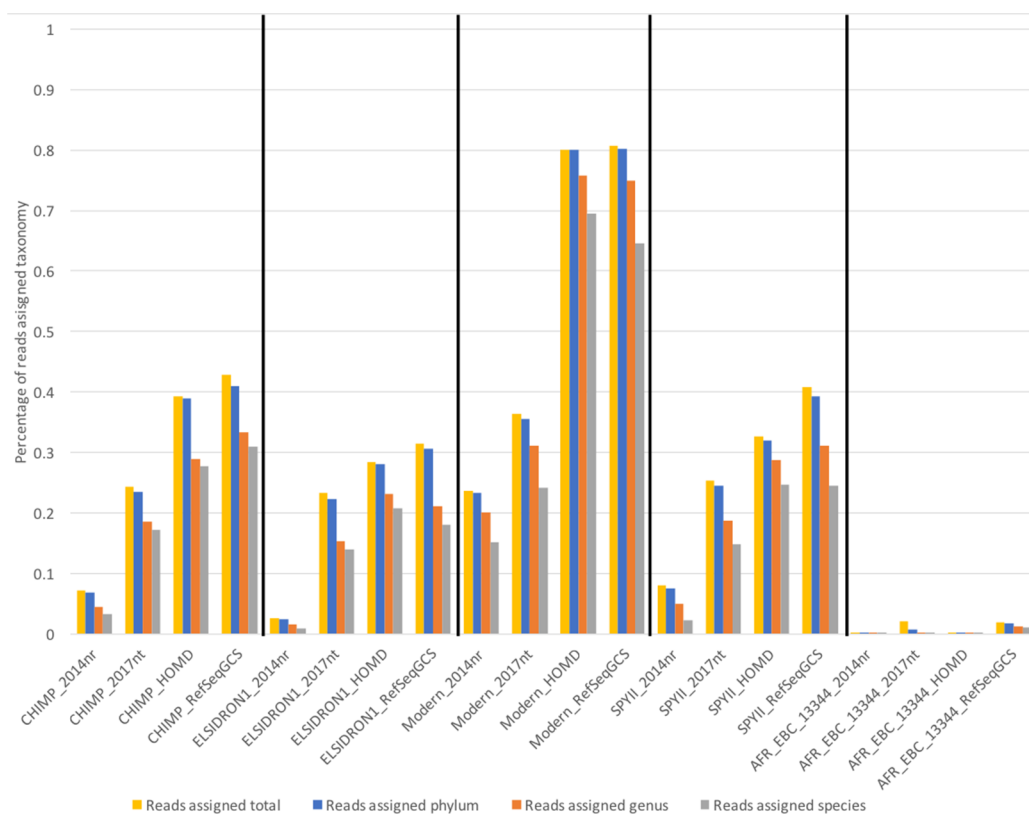


Figure 5 Percentage of reads assigned taxonomy to different taxonomic ranks for deeply sequenced published data. Clustered columns represent samples analysed using different reference databases. Colours indicate specificity of assignments. [Full-size !\[\]\(5f471a71b78d7676bc356df190b88ab4_img.jpg\) DOI: 10.7717/peerj.6594/fig-5](https://doi.org/10.7717/peerj.6594/fig-5)

percentage of sequences assigned taxonomic classification was observed with the modern sample when using nucleotide alignments with the RefSeqGCS database (80.8% sequences assigned; Fig. 5); this was in stark contrast to average percentage of reads assigned to three ancient oral metagenomes, where on average only 38.3% of sequences were classified. In the ancient samples, the highest number of classified species was observed when ancient sequences were aligned to the HOMD (Table 3), rather than the RefSeqGCS. The higher number of species observed when mapping to the HOMD could be due to either cross-mapping from environmental taxa (as it contains few soil/environmental genomes) or a higher diversity of oral-specific assemblies. Taxonomic compositions in the analysis were also markedly impacted by the database used (Figs. S11–S14; Table S7). Several oral taxa within the HOMD and RefSeqGCS databases are not present within the 2017nt database, such as *Actinomyces dentalis*, *Bacterioidetes sp. oral taxon 274*, *Capnocytophaga granulosa*, *Corynebacterium matruchotii*, *Methanobrevibacter oralis*, *Prevotella sp. oral taxon 317*, and *Pseudoramibacter alactolyticus*. This is a likely reason for the 2017nt assigning taxonomy to a smaller percentage of total sequences across all samples (24.3%) when compared to the HOMD (33.4%) and RefSeqGCS (38.3%). Overall, the RefSeqGCS database assigned the most sequences taxonomically and contained the most diverse selection of reference genomes,

Table 3 Number of genera and species identified in each MALT database.

Genus-level				
Database:	2014nr	2017nt	HOMD	RefSeqGCS
CHIMP	46	57	35	52
ELSIDRON1	49	50	42	48
MODERN	23	32	28	29
SPYII	64	64	54	62
Average	46	51	40	48
Species-level				
Database:	2014nr	2017nt	HOMD	RefSeqGCS
CHIMP	39	59	57	52
ELSIDRON1	42	53	73	69
MODERN	34	58	73	63
SPYII	87	86	74	77
Average	51	64	69	65

allowing for more efficient detection of both oral species and potential environmental contaminants. Therefore, we chose the RefSeqGCS for subsequent reanalysis of published dental calculus samples.

Reanalysis of published dental calculus data with nucleotide alignment

To further test the performance of the RefSeqGCS database, we reanalyzed several published ancient dental calculus samples (total of $n = 24$) (Weyrich *et al.*, 2017), including samples from an additional study ($n = 2$) (Warinner *et al.*, 2014). We found that MALTn with the RefSeqGCS database substantially increased the number of sequences assigned taxonomically compared to published results (average of 64.2-fold increase with MALTn against the RefSeqGCS vs. MALTx against the 2014nr; Table S8). Despite the increase in sequences assigned using MALTn, the average percentage of unassigned sequences remained relatively high (58.2%), although this was substantially lower than MALTx (94.2%). The MALTn-RefSeqGCS analysis also identified new species in ancient dental calculus specimens, including *A. dentalis*, *Bacteroidetes sp. oral taxon 274*, *Capnocytophaga granulosa*, *Corynebacterium matruchotii*, *Eikenella corrodens*, *Lautropia mirabilis*, *M. oralis*, numerous *Prevotella species*, *Pseudoramibacter alactolyticus*, *Slackia exigua*, and *Treponema socranskii*. When a UPGMA tree was constructed using Bray–Curtis distances, ancient agriculturalists were still generally found to cluster independently from hunter-gatherers, with the exception of a single ancient agriculturalist (LBK 1) (Fig. 6). However, the separation between the different types of hunter-gatherers was less pronounced than previously reported (Weyrich *et al.*, 2017), and several samples with low oral signals did not fall within either cluster (e.g. Chimpanzee, Spy II, and Afr SF1). Overall, these findings highlight how different analytical strategies can alter the findings of ancient DNA studies and suggest that it will be important to revisit

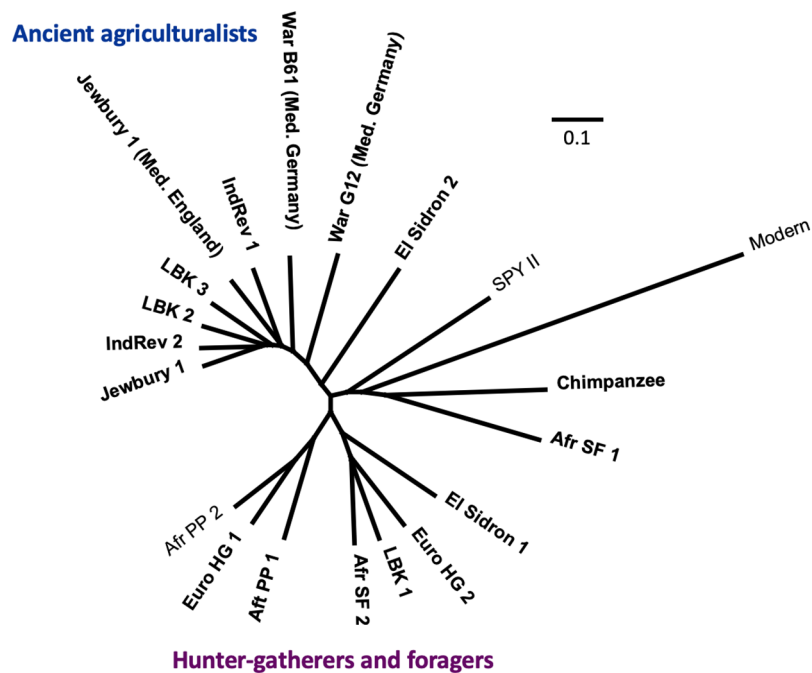


Figure 6 UPGMA tree of species-level Bray-Curtis dissimilarities calculated from the microbial composition between each sample. The branch scale bar represents the Bray-Curtis dissimilarity between samples. [Full-size !\[\]\(1679558f37f6db0dd8360a2a7e913e90_img.jpg\) DOI: 10.7717/peerj.6594/fig-6](https://doi.org/10.7717/peerj.6594/fig-6)

previously published datasets as reference databases become larger and analytical techniques are improved.

DISCUSSION

Using both simulated and real data, this study demonstrated that nucleotide-to-protein alignments currently struggle to assign taxonomy to the short DNA fragments typical of ancient DNA. We found that nucleotide-to-nucleotide alignments using MALTn can faithfully recapitulate simulated metagenomes with high accuracy even when sequences are extremely short (30 bp), contain high levels of deamination, and possess random sequence divergence corresponding to 100,000 years of evolution. We also tested four different reference databases and find that database choice is an important factor to consider for alignment-based taxonomic classification in ancient metagenomic studies; however, we also find that reliable, whole genome information incorporated into database usage drastically improves sequence mappability. Finally, we performed an in-depth reanalysis of a previously published paleomicrobiome study, increasing the number of sequences assigned taxonomically by an average of 64.2-fold and identifying taxa previously unidentified in the original study. We hope that the findings and suggestions provided in this paper will help inform future palaeomicrobiological researchers.

We evaluated the performance of both nucleotide-to-nucleotide and nucleotide-to-protein alignments for taxonomic classification and found that sequences shorter than ~60 bp could not be aligned using a nucleotide-to-protein approach. This can limit

the feasibility of nucleotide-to-protein alignments for some palaeomicrobiological studies given that ancient DNA sequences can be typically shorter than 60 bp. Nucleotide-to-protein alignments are limited by nucleotide translation, shortening the alignment length by a third (e.g. a 60 bp nucleotide sequence = a 20 aa protein sequence) and yielding a lower alignment score (bit-score). Given that the default bit-score threshold for MALT is 50, most short sequences would struggle to obtain a sufficient score to pass filtering. Additionally, amino acid scoring matrices can also influence the final score of the alignment; the default MALTx scoring matrix is BLOSUM62, which optimized for longer sequences (Pearson, 2013). The inability to align short sequences may also bias taxonomic composition towards modern environmental and laboratory contaminant taxa, whose sequences are typically longer.

Despite the 5.55-fold loss of sequences assigned using nucleotide-to-protein alignments, the taxonomic classifications were relatively similar to the nucleotide alignments for the simulated data set. However, nucleotide-to-nucleotide alignments lowered the rate of misclassifications. These misclassifications primarily resulted from the lack of non-coding sequences in the protein and CDS nucleotide databases, with misclassifications being supported by sequences that were derived from non-coding genes in the simulated inputs (e.g. tRNA, rRNA, etc.). Recent estimates from 2,671 complete bacterial genomes place the average percentage of non-coding DNA at 12% (Land et al., 2015); this represents a non-trivial amount of information that should be harnessed when using reference-based taxonomic alignment. Finally, we also demonstrated nucleotide-to-nucleotide alignments using MALT can faithfully recapitulate simulated taxonomic composition using sequences as short as 30 bp, highlighting the applicability of nucleotide-to-nucleotide alignments for ultra-short fragments typical of palaeomicrobiological studies. Pending further optimization to nucleotide-to-protein alignment methods, we currently recommend using a nucleotide-to-nucleotide alignment approach for taxonomic classification of short length ancient DNA and the inclusion of non-coding information in reference databases to reduce potential misclassification and to increase the amount of information used in alignments.

In this study, we tested the impacts of deamination on shotgun metagenomic taxonomic classifications. Velsko et al. (2018) previously found that deamination (~25% δ s) minimally affected taxonomic classification, and our results corroborate their finding using three different deamination rates (10%, 20%, and 50% δ s). We demonstrated that even high levels of cytosine deamination (50% δ s) did not substantially impact taxonomic classification in longer sequences; however, we observed a loss of ~15% of the species level classifications when analysing 30 bp DNA sequences with this level of deamination. This suggests that the use of uracil-DNA-glycosylase (UDG) (Briggs et al., 2010)—an enzyme that cleaves deaminated cytosines to reduce the rate of ancient DNA errors—may not be required for microbial taxonomic classification of ancient remains, as this also reduces the total number of sequences that can be analysed. Additionally, treatment with UDG—either full or partial (Rohland et al., 2015)—substantially reduces a key source of ancient DNA authentication, which is critical in palaeomicrobiological studies to verify ancient taxa from modern contamination. The lack of such authentication in

palaeomicrobiological research has already led to contentious claims ([Austin et al., 1997](#); [Weyrich, Llamas & Cooper, 2014](#); [Eisenhofer, Cooper & Weyrich, 2017](#); [Eisenhofer & Weyrich, 2018](#)). Given the minimal impact of deamination on alignment-based taxonomic classification, and the importance of deamination as a measure of ancient DNA authenticity, we recommend against the use of UDG for future palaeomicrobiological studies that focus on alignment-based classification.

Sequence divergence is another characteristic of ancient DNA that can render taxonomic classification difficult. We tested three substitution-based sequence divergence simulations and found that rates of random sequence divergence corresponding to <100,000 years unlikely to alter palaeomicrobiological classifications. A substantial reduction in the number of identified sequences was observed for samples with sequence divergence simulated at one million years (~20% loss of sequences assigned taxonomically). However, this is at the theoretical limit of DNA preservation ([Allentoft et al., 2012](#)) and is thus unlikely to hamper most palaeomicrobiological studies. We also found that the shorter sequences were, the more they were affected by sequence divergence and deamination, and this can intuitively be explained by the reduction in raw alignment score due to mismatches to the reference. As such, the use of new molecular techniques to obtain even shorter DNA fragments (e.g. <25 bp ([Glocke & Meyer, 2017](#))) may prove especially difficult to classify taxonomically given the combined effects of sequence divergence and deamination. Overall, we found that alignment-based taxonomic classification appears robust against magnitudes of random nucleotide substitution that could be observed in ancient DNA <100,000 years old. Despite this, we did not test the impacts of insertions, deletions, and recombination on taxonomic classifications; all would likely further hinder taxonomic classifications. Future simulations accounting for differences in synonymous/non-synonymous mutations may give amino acid alignments an advantage, given the excess synonymous mutations observed due to purifying selection ([Ochman, 2003](#)), although amino acid alignment scoring would still have to be optimized to deal with short DNA fragments. Additionally, future studies simulating the effects of insertions, deletions, and recombination on taxonomic classification are warranted.

We found that database choice had a major impact on both the number of sequences that were assigned taxonomically and the taxa classified by MALT. [Velsko et al. \(2018\)](#) previously observed biases in databases used between different taxonomic classifiers, and our study sought to test the impact of different databases within a single taxonomic classifier, MALT. The 2017nt BLAST database performed poorly compared to the HOMD and RefSeqGCS, assigning on average 33% fewer sequences taxonomically and lacking numerous key oral taxa. This is likely because the 2017nt BLAST database does not contain draft, unfinished bacterial genomes assemblies, which is a major limitation for ancient dental calculus research given that some important oral taxa currently have only chromosome or scaffold-level assemblies, such as *A. dentalis*, *Bacteroidetes sp. oral taxon 274*, *Capnocytophaga granulosa*, *Corynebacterium matruchotii*, *E. corrodens*, *L. mirabilis*, *M. oralis*, numerous *Prevotella species*, *Pseudoramibacter alactolyticus*, *S. exigua*, and *T. socranskii*. While the HOMD database contained substantially fewer reference

sequences compared to the RefSeqGCS (1,362 vs. 47,713, respectively), it performed comparably regarding the number of sequences assigned from ancient dental calculus samples. However, using the HOMD database alone for taxonomic classification of ancient dental calculus can be problematic, as it does not contain many environmental or laboratory contaminant taxa that are typically present in ancient samples, such as *Sphingomonas* sp. MM1, which could not be assigned from the simulated metagenome. These environmental and laboratory contaminant taxa allow for the quantification of contamination and competitive alignment, which can prevent false positive assignments (Key *et al.*, 2017). Overall, the larger diversity of the RefSeqGCS database increases its ability to classify the most sequences taxonomically, so we would recommend it over the others tested for future palaeomicrobiological studies. An important caveat to using RefSeq references is that some uncultured organisms can be underrepresented. For example, searching ‘Saccharibacteria’—an important oral phylum (formerly TM7)—in the NCBI Assembly yielded 153 GenBank entries, and only two RefSeq entries (October 2018). While greater diversity is typically desirable in a reference database, further work is needed to assess and curate the quality of reference assemblies, especially of scaffold- and contig-level, to ensure reliable and accurate alignment-based taxonomic classification (Parks *et al.*, 2015). There is also scope for a concerted effort by palaeomicrobiological researchers to work together in constructing a curated, regularly updated reference database. This could help foster reproducibility and set a standard for future work in the field, similar to what has been accomplished by the HOMD for oral microbiome studies (Chen *et al.*, 2010).

We also performed a reanalysis of previously published ancient dental calculus data from (Weyrich *et al.*, 2017) to test if our in-silico findings were true for real data, explore the proportion of sequences currently classifiable, and see whether the relationships between samples changed when using the RefSeqGCS database. Nucleotide alignment against the RefSeqGCS database performed considerably better compared to protein alignment against the 2014nr, with an average 64.2-fold increase in the number of sequences assigned taxonomically. As expected, this increase was higher for samples with shorter mean fragment lengths and highlights the importance of using nucleotide-to-nucleotide alignments to more accurately reconstruct ancient samples. Despite the substantial increase in the number of sequences aligned, the average number of sequences that did not have any alignment was still 58.2%. When compared to the latest extension to the human microbiome project where the average number of sequences without alignment was ~25% for 265 supragingival plaque samples (Lloyd-Price *et al.*, 2017), this suggests that substantial reference bias exists for ancient calculus samples. This is not likely due to methodological differences between studies, as the modern calculus sample we analysed in this study (European descent) had a similar percentage of its sequences without alignment (19.4%) compared to ~25% for the (Lloyd-Price *et al.*, 2017) study. One hypothesis for this finding is that modern reference databases are missing many oral microorganisms that were present in historical and ancient humans. Additionally, given that most modern microbiome studies and microbial genomes assembled are from European/American individuals (Consortium, 2012;

Lloyd-Price et al., 2017), current reference databases are likely missing oral microbial diversity from non-Industrial, non-Caucasian, or ancient human populations. Another possibility is that DNA contamination of dental calculus samples is from ancient or modern soil microorganisms that do not currently have reference sequences. Regardless of the cause, additional steps could be taken to improve the number of ancient DNA sequences that can be taxonomically identified. For example, de novo assembled genomes from these ancient samples could be used as reference sequences for further alignment-based taxonomic classification. Such tools currently exist (*Imelfort et al., 2014*), but their performance on short and degraded ancient DNA is yet to be determined. An alternative and complementary approach is to obtain a greater diversity of high-quality reference genomes from modern samples, including from non-Caucasian individuals. Until we can comfortably assign a higher proportion of ancient DNA sequences taxonomically, we recommend that palaeomicrobiological researchers report the percentage of unassigned sequences when classifying taxonomy and are aware of the fact that missing references can increase the rate of misclassifications (*Warinner et al., 2017; Velsko et al., 2018*).

Database sizes are a limitation for the currently implemented algorithms in MALT, as MALT uses large amounts of memory (e.g. >1 TB of RAM) when aligning sequences to the 2017nt and RefSeqGCS databases, and these requirements will increase as more genomes are added to databases. We were not able to investigate eukaryotic or viral classification in ancient metagenomes due to memory constraints, and instead focused on prokaryotes, which account for >99% of DNA in ancient dental calculus (*Warinner, Speller & Collins, 2014; Weyrich et al., 2017*). A possible solution may be better database curation, for example, through deduplication of the same strain with multiple entries, which could be accomplished using a sequence similarity clustering-based approach. Additionally, future algorithmic refinements in database compression may alleviate this issue. Ultimately, database choice is an essential facet of alignment-based taxonomic classification, and we urge researchers to carefully consider the pros and cons of different databases and how they can affect their findings. Additionally, database utilisation is a fluid issue; as more reference sequences are generated, reanalysis of palaeomicrobiological datasets will be important to reassess past interpretations and findings.

CONCLUSIONS

Using both simulated and real data, this study demonstrated that nucleotide-to-protein alignments currently struggle to assign taxonomy to the short DNA fragments typical of ancient DNA. We found that nucleotide-to-nucleotide alignments using MALTn can faithfully recapitulate simulated metagenomes with high accuracy, even when reads are extremely short (30 bp) and contain high levels of deamination and random sequence divergence corresponding to 100,000 years of evolution. We also tested four different reference databases and find that database choice is an important factor to consider for alignment-based taxonomic classification in ancient metagenomic studies and that the application of full microbial reference genomes within nucleotide alignment strategies currently produces the most robust results. Finally, we performed an in-depth

reanalysis of previously published paleomicrobiome studies, increasing the number of reads assigned taxonomy by an average of 64.2-fold and identifying taxa previously unidentified in the original study. We hope that the findings and suggestions provided in this paper will help inform future palaeomicrobiological researchers.

ADDITIONAL INFORMATION AND DECLARATIONS

Funding

This work was supported by the Australian Research Council (ARC): DECRA (DE150101574) and ARC Centre of Excellence CABAH (CE170100015). The funders had no role in study design, data collection and analysis, decision to publish, or preparation of the manuscript.

Grant Disclosures

The following grant information was disclosed by the authors:
Australian Research Council (ARC): DECRA: DE150101574.
ARC Centre of Excellence CABAH: CE170100015.

Competing Interests

The authors declare that they have no competing interests.

Author Contributions

- Raphael Eisenhofer conceived and designed the experiments, performed the experiments, analysed the data, prepared figures and/or tables, authored or reviewed drafts of the paper, approved the final draft.
- Laura Susan Weyrich conceived and designed the experiments, contributed reagents/materials/analysis tools, authored or reviewed drafts of the paper, approved the final draft.

Data Availability

The following information was supplied regarding data availability:

Figshare:

Eisenhofer Philipona, Raphael (2018): List of assembly accessions for simulated MALT analyses. figshare. Dataset.

<https://doi.org/10.25909/5b84c9c196f54>.

Eisenhofer Philipona, Raphael (2018): Genomes-Used-For-Simulated-Metagenomes. figshare. Dataset.

<https://doi.org/10.4225/55/5b0ca9b2cd6dc>.

Eisenhofer Philipona, Raphael (2018): Simulated_Metagenomes. figshare. Dataset.

<https://doi.org/10.4225/55/5b0caf73b7247>.

Eisenhofer Philipona, Raphael (2018): RefSeqGCS genome accessions. figshare. Dataset.

<https://doi.org/10.25909/5b84ddf58ac49>.

Eisenhofer Philipona, Raphael (2018): HOMD accessions. figshare. Dataset.

<https://doi.org/10.25909/5b84d19aaff2a>.

Supplemental Information

Supplemental information for this article can be found online at <http://dx.doi.org/10.7717/peerj.6594#supplemental-information>.

REFERENCES

- Adler CJ, Dobney K, Weyrich LS, Kaidonis J, Walker AW, Haak W, Bradshaw CJA, Townsend G, Sołtysiak A, Alt KW, Parkhill J, Cooper A. 2013. Sequencing ancient calcified dental plaque shows changes in oral microbiota with dietary shifts of the Neolithic and Industrial revolutions. *Nature Genetics* 45(4):450–455 DOI 10.1038/ng.2536.
- Allentoft ME, Collins M, Harker D, Haile J, Oskam CL, Hale ML, Campos PF, Samaniego JA, Gilbert MTP, Willerslev E, Zhang G, Scofield RP, Holdaway RN, Bunce M. 2012. The half-life of DNA in bone: measuring decay kinetics in 158 dated fossils. *Proceedings of the Royal Society B: Biological Sciences* 279(1748):4724–4733 DOI 10.1098/rspb.2012.1745.
- Altschul SF, Gish W, Miller W, Myers EW, Lipman DJ. 1990. Basic local alignment search tool. *Journal of Molecular Biology* 215(3):403–410 DOI 10.1016/S0022-2836(05)80360-2.
- Austin JJ, Ross AJ, Smith AB, Fortey RA, Thomas RH. 1997. Problems of reproducibility—does geologically ancient DNA survive in amber-preserved insects? *Proceedings of the Royal Society of London B: Biological Sciences* 264(1381):467–474 DOI 10.1098/rspb.1997.0067.
- Bos KI, Harkins KM, Herbig A, Coscolla M, Weber N, Comas I, Forrest SA, Bryant JM, Harris SR, Schuenemann VJ, Campbell TJ, Majander K, Wilbur AK, Guichon RA, Wolfe Steadman DL, Cook DC, Niemann S, Behr MA, Zumarraga M, Bastida R, Huson D, Nieselt K, Young D, Parkhill J, Buikstra JE, Gagneux S, Stone AC, Krause J. 2014. Pre-Columbian mycobacterial genomes reveal seals as a source of New World human tuberculosis. *Nature* 514(7523):494–497 DOI 10.1038/nature13591.
- Bos KI, Schuenemann VJ, Golding GB, Burbano HA, Waglechner N, Coombes BK, McPhee JB, DeWitte SN, Meyer M, Schmedes S, Wood J, Earn DJD, Herring DA, Bauer P, Poinar HN, Krause J. 2011. A draft genome of *Yersinia pestis* from victims of the Black Death. *Nature* 478(7370):506–510 DOI 10.1038/nature10549.
- Briggs AW, Stenzel U, Johnson PLF, Green RE, Kelso J, Prüfer K, Meyer M, Krause J, Ronan MT, Lachmann M, Pääbo S. 2007. Patterns of damage in genomic DNA sequences from a Neandertal. *Proceedings of the National Academy of Sciences of the United States of America* 104(37):14616–14621 DOI 10.1073/pnas.0704665104.
- Briggs AW, Stenzel U, Meyer M, Krause J, Kircher M, Pääbo S. 2010. Removal of deaminated cytosines and detection of in vivo methylation in ancient DNA. *Nucleic Acids Research* 38(6):e87 DOI 10.1093/nar/gkp1163.
- Buchfink B, Xie C, Huson DH. 2015. Fast and sensitive protein alignment using DIAMOND. *Nature Methods* 12(1):59–60 DOI 10.1038/nmeth.3176.
- Caporaso JG, Lauber CL, Walters WA, Berg-Lyons D, Huntley J, Fierer N, Owens SM, Betley J, Fraser L, Bauer M, Gormley N, Gilbert JA, Smith G, Knight R. 2012. Ultra-high-throughput microbial community analysis on the Illumina HiSeq and MiSeq platforms. *ISME Journal* 6(8):1621–1624 DOI 10.1038/ismej.2012.8.
- Chen T, Yu W-H, Izard J, Baranova OV, Lakshmanan A, Dewhirst FE. 2010. The human oral microbiome database: a web accessible resource for investigating oral microbe taxonomic and genomic information. *Database 2010:baq013* DOI 10.1093/database/baq013.

- Consortium THMP. 2012.** Structure, function and diversity of the healthy human microbiome. *Nature* **486(7402)**:207–214 DOI [10.1038/nature11234](https://doi.org/10.1038/nature11234).
- Dabney J, Meyer M, Pääbo S. 2013.** Ancient DNA Damage. *Cold Spring Harbor Perspectives in Biology* **5(7)**:a012567 DOI [10.1101/cshperspect.a012567](https://doi.org/10.1101/cshperspect.a012567).
- Dominguez-Bello MG, Blaser MJ. 2011.** The human microbiota as a marker for migrations of individuals and populations. *Annual Review of Anthropology* **40(1)**:451–474 DOI [10.1146/annurev-anthro-081309-145711](https://doi.org/10.1146/annurev-anthro-081309-145711).
- Duchêne S, Holt KE, Weill F-X, Le Hello S, Hawkey J, Edwards DJ, Fourment M, Holmes EC. 2016.** Genome-scale rates of evolutionary change in bacteria. *Microbial Genomics* **2(11)**:e000094 DOI [10.1099/mgen.0.000094](https://doi.org/10.1099/mgen.0.000094).
- Eisenhofer R, Anderson A, Dobney K, Cooper A, Weyrich LS. 2017.** Ancient microbial DNA in dental calculus: a new method for studying rapid human migration events. Epub ahead of print 13 November 2017. *Journal of Island and Coastal Archaeology* 1–14 DOI [10.1080/15564894.2017.1382620](https://doi.org/10.1080/15564894.2017.1382620).
- Eisenhofer R, Cooper A, Weyrich LS. 2017.** Reply to Santiago-Rodriguez et al.: proper authentication of ancient DNA is essential. *FEMS Microbiology Ecology* **93(5)**:fix042 DOI [10.1093/femsec/fix042](https://doi.org/10.1093/femsec/fix042).
- Eisenhofer R, Minich JJ, Marotz C, Cooper A, Knight R, Weyrich LS. 2019.** Contamination in low microbial biomass microbiome studies: issues and recommendations. *Trends in Microbiology* **27(2)**:105–117 DOI [10.1016/j.tim.2018.11.003](https://doi.org/10.1016/j.tim.2018.11.003).
- Eisenhofer R, Weyrich LS. 2018.** Proper authentication of ancient DNA is still essential. *Genes* **9(3)**:122 DOI [10.3390/genes9030122](https://doi.org/10.3390/genes9030122).
- Frisia S, Weyrich LS, Hellstrom J, Borsato A, Golledge NR, Anesio AM, Bajo P, Drysdale RN, Augustinus PC, Rivard C, Cooper A. 2017.** The influence of Antarctic subglacial volcanism on the global iron cycle during the Last Glacial Maximum. *Nature Communications* **8**:15425 DOI [10.1038/ncomms15425](https://doi.org/10.1038/ncomms15425).
- Gilbert JA, Jansson JK, Knight R. 2014.** The earth microbiome project: successes and aspirations. *BMC Biology* **12(1)**:69 DOI [10.1186/s12915-014-0069-1](https://doi.org/10.1186/s12915-014-0069-1).
- Glocke I, Meyer M. 2017.** Extending the spectrum of DNA sequences retrieved from ancient bones and teeth. *Genome Research* **27(7)**:1230–1237 DOI [10.1101/gr.219675.116](https://doi.org/10.1101/gr.219675.116).
- Huson DH, Auch AF, Qi J, Schuster SC. 2007.** MEGAN analysis of metagenomic data. *Genome Research* **17(3)**:377–386 DOI [10.1101/gr.5969107](https://doi.org/10.1101/gr.5969107).
- Huson DH, Beier S, Flade I, Górská A, El-Hadidi M, Mitra S, Ruscheweyh H-J, Tappu R. 2016.** MEGAN community edition—interactive exploration and analysis of large-scale microbiome sequencing data. *PLOS Computational Biology* **12(6)**:e1004957 DOI [10.1371/journal.pcbi.1004957](https://doi.org/10.1371/journal.pcbi.1004957).
- Huson DH, Bryant D. 2006.** Application of phylogenetic networks in evolutionary studies. *Molecular Biology and Evolution* **23(2)**:254–267 DOI [10.1093/molbev/msj030](https://doi.org/10.1093/molbev/msj030).
- Imelfort M, Parks D, Woodcroft BJ, Dennis P, Hugenholtz P, Tyson GW. 2014.** GroopM: an automated tool for the recovery of population genomes from related metagenomes. *PeerJ* **2**:e603 DOI [10.7717/peerj.603](https://doi.org/10.7717/peerj.603).
- Key FM, Posth C, Krause J, Herbig A, Bos KI. 2017.** Mining metagenomic data sets for ancient DNA: recommended protocols for authentication. *Trends in Genetics* **33(8)**:508–520 DOI [10.1016/j.tig.2017.05.005](https://doi.org/10.1016/j.tig.2017.05.005).
- Land M, Hauser L, Jun S-R, Nookaew I, Leuze MR, Ahn T-H, Karpinets T, Lund O, Kora G, Wassenaar T, Poudel S, Ussery DW. 2015.** Insights from 20 years of bacterial genome

- sequencing. *Functional & Integrative Genomics* **15**(2):141–161
DOI [10.1007/s10142-015-0433-4](https://doi.org/10.1007/s10142-015-0433-4).
- Langmead B, Salzberg SL. 2012.** Fast gapped-read alignment with Bowtie 2. *Nature Methods* **9**(4):357–359 DOI [10.1038/nmeth.1923](https://doi.org/10.1038/nmeth.1923).
- Li H, Durbin R. 2009.** Fast and accurate short read alignment with Burrows-Wheeler transform. *Bioinformatics* **25**(14):1754–1760 DOI [10.1093/bioinformatics/btp324](https://doi.org/10.1093/bioinformatics/btp324).
- Llamas B, Valverde G, Fehren-Schmitz L, Weyrich LS, Cooper A, Haak W. 2017.** From the field to the laboratory: controlling DNA contamination in human ancient DNA research in the high-throughput sequencing era. *STAR: Science & Technology of Archaeological Research* **3**(1):1–14 DOI [10.1080/20548923.2016.1258824](https://doi.org/10.1080/20548923.2016.1258824).
- Lloyd-Price J, Mahurkar A, Rahnavard G, Crabtree J, Orvis J, Hall AB, Brady A, Creasy HH, McCracken C, Giglio MG, McDonald D, Franzosa EA, Knight R, White O, Huttenhower C. 2017.** Strains, functions and dynamics in the expanded human microbiome project. *Nature* **550**:61–66 DOI [10.1038/nature23889](https://doi.org/10.1038/nature23889).
- Maixner F, Krause-Kyora B, Turaev D, Herbig A, Hoopmann MR, Hallows JL, Kusebauch U, Vigil EE, Malfertheiner P, Megraud F, O’Sullivan N, Cipollini G, Coia V, Samadelli M, Engstrand L, Linz B, Moritz RL, Grimm R, Krause J, Nebel A, Moodley Y, Rattei T, Zink A. 2016.** The 5300-year-old *Helicobacter pylori* genome of the Iceman. *Science* **351**(6269):162–165 DOI [10.1126/science.aad2545](https://doi.org/10.1126/science.aad2545).
- Meyer F, Paarmann D, D’Souza M, Olson R, Glass E, Kubal M, Paczian T, Rodriguez A, Stevens R, Wilke A, Wilkening J, Edwards RA. 2008.** The metagenomics RAST server—a public resource for the automatic phylogenetic and functional analysis of metagenomes. *BMC Bioinformatics* **9**(1):386 DOI [10.1186/1471-2105-9-386](https://doi.org/10.1186/1471-2105-9-386).
- Ochman H. 2003.** Neutral mutations and neutral substitutions in bacterial genomes. *Molecular Biology and Evolution* **20**(12):2091–2096 DOI [10.1093/molbev/msg229](https://doi.org/10.1093/molbev/msg229).
- Ounit R, Lonardi S. 2016.** Higher classification sensitivity of short metagenomic reads with CLARK-S. *Bioinformatics* **32**(24):3823–3825 DOI [10.1093/bioinformatics/btw542](https://doi.org/10.1093/bioinformatics/btw542).
- Parks DH, Imelfort M, Skennerton CT, Hugenholtz P, Tyson GW. 2015.** CheckM: assessing the quality of microbial genomes recovered from isolates, single cells, and metagenomes. *Genome Research* **25**(7):1043–1055 DOI [10.1101/gr.186072.114](https://doi.org/10.1101/gr.186072.114).
- Parks DH, Rinke C, Chuvochina M, Chaumeil P-A, Woodcroft BJ, Evans PN, Hugenholtz P, Tyson GW. 2017.** Recovery of nearly 8,000 metagenome-assembled genomes substantially expands the tree of life. *Nature Microbiology* **2**(11):1533–1542 DOI [10.1038/s41564-017-0012-7](https://doi.org/10.1038/s41564-017-0012-7).
- Pearson WR. 2013.** Selecting the right similarity-scoring matrix. *Current Protocols in Bioinformatics* **43**:3.5.1–3.5.9 DOI [10.1002/0471250953.bi0305s43](https://doi.org/10.1002/0471250953.bi0305s43).
- Renaud G, Hanghøj K, Willerslev E, Orlando L. 2017.** gargammel: a sequence simulator for ancient DNA. *Bioinformatics* **33**:577–579 DOI [10.1093/bioinformatics/btw670](https://doi.org/10.1093/bioinformatics/btw670).
- Rice P, Longden I, Bleasby A. 2000.** EMBOSS: the European molecular biology open software suite. *Trends in Genetics* **16**(6):276–277 DOI [10.1016/S0168-9525\(00\)02024-2](https://doi.org/10.1016/S0168-9525(00)02024-2).
- Rohland N, Harney E, Mallick S, Nordenfelt S, Reich D. 2015.** Partial uracil-DNA-glycosylase treatment for screening of ancient DNA. *Philosophical Transactions of the Royal Society B: Biological Sciences* **370**(1660):20130624 DOI [10.1098/rstb.2013.0624](https://doi.org/10.1098/rstb.2013.0624).
- Salter SJ, Cox MJ, Turek EM, Calus ST, Cookson WO, Moffatt MF, Turner P, Parkhill J, Loman NJ, Walker AW. 2014.** Reagent and laboratory contamination can critically impact sequence-based microbiome analyses. *BMC Biology* **12**(1):87 DOI [10.1186/s12915-014-0087-z](https://doi.org/10.1186/s12915-014-0087-z).
- The Human Microbiome Project Consortium, Huttenhower C, Gevers D, Knight R, Abubucker S, Badger JH, Chinwalla AT, Creasy HH, Earl AM, FitzGerald MG, Fulton RS, Giglio MG,**

Hallsworth-Pepin K, Lobos EA, Madupu R, Magrini V, Martin JC, Mitreva M, Muzny DM, Sodergren EJ, Versalovic J, Wollam AM, Worley KC, Wortman JR, Young SK, Zeng Q, Aagaard KM, Abolude OO, Allen-Vercos E, Alm EJ, Alvarado L, Andersen GL, Anderson S, Appelbaum E, Arachchi HM, Armitage G, Arze CA, Ayvaz T, Baker CC, Begg L, Belachew T, Bhonagiri V, Bihan M, Blaser MJ, Bloom T, Bonazzi V, Paul Brooks J, Buck GA, Buhay CJ, Busam DA, Campbell JL, Canon SR, Cantarel BL, Chain PSG, Chen I-MA, Chen L, Chhibba S, Chu K, Ciulla DM, Clemente JC, Clifton SW, Conlan S, Crabtree J, Cutting MA, Davidovics NJ, Davis CC, DeSantis TZ, Deal C, Delehaunty KD, Dewhirst FE, Deych E, Ding Y, Dooling DJ, Dugan SP, Michael Dunne W, Scott Durkin A, Edgar RC, Erlich RL, Farmer CN, Farrell RM, Faust K, Feldgarden M, Felix VM, Fisher S, Fodor AA, Forney LJ, Foster L, Di Francesco V, Friedman J, Friedrich DC, Fronick CC, Fulton LL, Gao H, Garcia N, Giannoukos G, Giblin C, Giovanni MY, Goldberg JM, Goll J, Gonzalez A, Griggs A, Gujja S, Kinder Haake S, Haas BJ, Hamilton HA, Harris EL, Hepburn TA, Herter B, Hoffmann DE, Holder ME, Howarth C, Huang KH, Huse SM, Izard J, Jansson JK, Jiang H, Jordan C, Joshi V, Katancik JA, Keitel WA, Kelley ST, Kells C, King NB, Knights D, Kong HH, Koren O, Koren S, Kota KC, Kovar CL, Kyrpides NC, La Rosa PS, Lee SL, Lemon KP, Lennon N, Lewis CM, Lewis L, Ley RE, Li K, Liolios K, Liu B, Liu Y, Lo C-C, Lozupone CA, Dwayne Lunsford R, Madden T, Mahurkar AA, Mannon PJ, Mardis ER, Markowitz VM, Mavromatis K, McCorrison JM, McDonald D, McEwen J, McGuire AL, McInnes P, Mehta T, Mihindukulasuriya KA, Miller JR, Minx PJ, Newsham I, Nusbaum C, O'Laughlin M, Orvis J, Pagani I, Palaniappan K, Patel SM, Pearson M, Peterson J, Podar M, Pohl C, Pollard KS, Pop M, Priest ME, Proctor LM, Qin X, Raes J, Ravel J, Reid JG, Rho M, Rhodes R, Riehle KP, Rivera MC, Rodriguez-Mueller B, Rogers Y-H, Ross MC, Russ C, Sanka RK, Sankar P, Fah Sathirapongsasuti J, Schloss JA, Schloss PD, Schmidt TM, Scholz M, Schriml L, Schubert AM, Segata N, Segre JA, Shannon WD, Sharp RR, Sharpton TJ, et al. 2012. Structure, function and diversity of the healthy human microbiome. *Nature* 486(7402):207–214 DOI 10.1038/nature11234.

Truong DT, Franzosa EA, Tickle TL, Scholz M, Weingart G, Pasolli E, Tett A, Huttenhower C, Segata N. 2015. MetaPhlan2 for enhanced metagenomic taxonomic profiling. *Nature Methods* 12(10):902–903 DOI 10.1038/nmeth.3589.

Vågane ÅJ, Herbig A, Campana MG, García NMR, Warinner C, Sabin S, Spyrou MA, Valtueña AA, Huson D, Tuross N, Bos KI, Krause J. 2018. Salmonella enterica genomes from victims of a major sixteenth-century epidemic in Mexico. *Nature Ecology & Evolution* 2(3):520–528 DOI 10.1038/s41559-017-0446-6.

Velsko IM, Frantz LAF, Herbig A, Larson G, Warinner C. 2018. Selection of appropriate metagenome taxonomic classifiers for ancient microbiome research. *mSystems* 3(4):e0008018 DOI 10.1128/mSystems.00080-18.

Warinner C, Herbig A, Mann A, Yates JAF, Weiß CL, Burbano HA, Orlando L, Krause J. 2017. A robust framework for microbial archaeology. *Annual Review of Genomics and Human Genetics* 18(1):321–356 DOI 10.1146/annurev-genom-091416-035526.

Warinner C, Rodrigues JFM, Vyas R, Trachsel C, Shved N, Grossmann J, Radini A, Hancock Y, Tito RY, Fiddyment S, Speller C, Hendy J, Charlton S, Luder HU, Salazar-García DC, Eppler E, Seiler R, Hansen LH, Castruita JAS, Barkow-Oesterreicher S, Teoh KY, Kelstrup CD, Olsen JV, Nanni P, Kawai T, Willerslev E, Von Mering C, Lewis CM, Collins MJ, Gilbert MTP, Rühli F, Cappellini E. 2014. Pathogens and host immunity in the ancient human oral cavity. *Nature Genetics* 46:336–344 DOI 10.1038/ng.2906.

Warinner C, Speller C, Collins MJ. 2014. A new era in palaeomicrobiology: prospects for ancient dental calculus as a long-term record of the human oral microbiome. *Philosophical*

Transactions of the Royal Society B: Biological Sciences **370(1660)**:20130376
DOI [10.1098/rstb.2013.0376](https://doi.org/10.1098/rstb.2013.0376).

Weyrich LS, Dobney K, Cooper A. 2015. Ancient DNA analysis of dental calculus.
Journal of Human Evolution **79**:119–124 DOI [10.1016/j.jhevol.2014.06.018](https://doi.org/10.1016/j.jhevol.2014.06.018).

Weyrich LS, Duchene S, Soubrier J, Arriola L, Llamas B, Breen J, Morris AG, Alt KW, Caramelli D, Dresely V, Farrell M, Farrer AG, Francken M, Gully N, Haak W, Hardy K, Harvati K, Held P, Holmes EC, Kaidonis J, Lalueza-Fox C, De la Rasilla M, Rosas A, Semal P, Soltysiak A, Townsend G, Usai D, Wahl J, Huson DH, Dobney K, Cooper A. 2017. Neanderthal behaviour, diet, and disease inferred from ancient DNA in dental calculus.
Nature **544(7650)**:357–361 DOI [10.1038/nature21674](https://doi.org/10.1038/nature21674).

Weyrich LS, Llamas B, Cooper A. 2014. Reply to Santiago-Rodriguez et al.: was luxS really isolated from 25- to 40-million-year-old bacteria? *FEMS Microbiology Letters* **353(2)**:85–86
DOI [10.1111/1574-6968.12415](https://doi.org/10.1111/1574-6968.12415).

Wood DE, Salzberg SL. 2014. Kraken: ultrafast metagenomic sequence classification using exact alignments. *Genome Biology* **15(3)**:R46 DOI [10.1186/gb-2014-15-3-r46](https://doi.org/10.1186/gb-2014-15-3-r46).

Ziesemer KA, Mann AE, Sankaranarayanan K, Schroeder H, Ozga AT, Brandt BW, Zaura E, Waters-Rist A, Hoogland M, Salazar-García DC, Aldenderfer M, Speller C, Hendy J, Weston DA, MacDonald SJ, Thomas GH, Collins MJ, Lewis CM, Hofman C, Warinner C. 2015. Intrinsic challenges in ancient microbiome reconstruction using 16S rRNA gene amplification. *Scientific Reports* **5(1)**:16498 DOI [10.1038/srep16498](https://doi.org/10.1038/srep16498).