

## RESEARCH ARTICLE

## Climate change and bird extinctions in the Amazon

Kauê Felipe de Moraes<sup>1,2\*</sup>, Marcos Pérsio Dantas Santos<sup>1,2,3</sup>, Gabriela Silva Ribeiro Gonçalves<sup>2</sup>, Geovana Linhares de Oliveira<sup>3</sup>, Leticia Braga Gomes<sup>3</sup>, Marcela Guimarães Moreira Lima<sup>1,2</sup>

**1** Programa de Pós-Graduação em Ecologia, Universidade Federal do Pará, Belém, Brasil, **2** Laboratório de Biogeografia da Conservação e Macroecologia, Universidade Federal do Pará, Belém, Brasil, **3** Programa de Pós-Graduação em Zoologia, Universidade Federal do Pará, Belém, Brasil

\* [kaauemoraes@yahoo.com.br](mailto:kaauemoraes@yahoo.com.br)

**OPEN ACCESS**

**Citation:** de Moraes KF, Santos MPD, Gonçalves GSR, de Oliveira GL, Gomes LB, Lima MGM (2020) Climate change and bird extinctions in the Amazon. *PLoS ONE* 15(7): e0236103. <https://doi.org/10.1371/journal.pone.0236103>

**Editor:** Daniel de Paiva Silva, Instituto Federal de Educacao Ciencia e Tecnologia Goiano - Campus Urutai, BRAZIL

**Received:** January 23, 2020

**Accepted:** June 29, 2020

**Published:** July 17, 2020

**Copyright:** © 2020 de Moraes et al. This is an open access article distributed under the terms of the [Creative Commons Attribution License](https://creativecommons.org/licenses/by/4.0/), which permits unrestricted use, distribution, and reproduction in any medium, provided the original author and source are credited.

**Data Availability Statement:** All relevant data are within the paper and its Supporting Information files.

**Funding:** We declare that this study was partly financed by the Coordenação de Aperfeiçoamento de Pessoal de Nível Superior - CAPES (00.889.834 / 0001-08) that provided financial support granted to KFM (process #1766515) as a scholarship, and the Conselho Nacional de Desenvolvimento Científico e Tecnológico (CNPq) that provides financial support granted to MPDS (process

## Abstract

In recent years, carbon dioxide emissions have been potentiated by several anthropogenic processes that culminate in climate change, which in turn directly threatens biodiversity and the resilience of natural ecosystems. Tropical rainforests are among the most impacted biological realms. The Belém endemism center, which is one of the several endemism centers in Amazon, is located in the most affected area within the so-called “Deforestation Arc.” Moreover, this region harbors a high concentration of Amazonian endangered bird species, of which 56% of them are considered to be under the threat of extinction. In this work, we sought to evaluate the current and future impacts of both climate change and deforestation on the distribution of endemic birds in the Belém Area of Endemism (BEA). Thus, we generated species distribution models for the 16 endemic bird species considering the current and two future gas emission scenarios (optimistic and pessimistic). We also evaluated climate change impacts on these birds in three different dispersal contexts. Our results indicate that BAE, the endemic taxa will lose an average of 73% of suitable areas by 2050. At least six of these birds species will have less than 10% or no future suitable habitat in all emission scenarios. One of the main mechanisms used to mitigate the impacts of climate change on these species in the near future is to assess the current system of protected areas. It is necessary to ensure that these areas will continue being effective in conserving these species even under climate change. The “Gurupi Mosaic” and the “Rio-Capim” watershed are areas of great importance because they are considered climate refuges according to our study. Thus, conservation efforts should be directed to the maintenance and preservation of these two large remnants of vegetation in addition to creating ecological corridors between them.

## Introduction

In recent years, carbon dioxide emissions have been potentiated by various anthropogenic processes, leading to an increase in the Earth’s average temperature [1,2,3,4]. Assessment

#308403/2017-7) as a scholarship. There was no external funding to support this research.

**Competing interests:** The authors have declared that no competing interests exist.

reports from the *Intergovernmental Panel on Climate Change* (IPCC) have indicated an alarming future as a consequence of these processes. As predicted, climate change brings with it transformations in global climate patterns, such as the melting of both glaciers and permafrost, as well as changes in precipitation regimes [5,6]. Altogether, these transformations threaten biodiversity and the resilience of natural ecosystems [7] by, for instance, decreasing the number of suitable habitats, altering ecological interactions among species, thus, negatively impacting the ecosystem services [8,9,10,11,12,13].

The relationship between climate change and deforestation can aggravate their negative impacts on natural ecosystems [14]. The increase in global average temperatures and longer drought periods, together with habitat reduction and fragmentation, can expose species to an even more vulnerable situation [15]. Some climate change projections predict considerable impacts on species distribution and, consequently, loss of ecosystem functions [16,17]. Moreover, the areas affected by the effects of climate change are under significant threat from anthropogenic activities that aggravate deforestation [18,19].

Given this climate change scenario and its implications for biodiversity, tropical rainforests are among the most impacted areas [20]. Several studies claim a possible “savannization” in eastern Amazon due to more prolonged drought periods in this region [21,22]. Such lengthier drought periods have directly affected the diversity of the flora [4,23] and influenced the distributions of forest-dependent species [24]. Also, the Amazon forest has been affected by various anthropogenic activities, such as logging, large-scale mechanized agriculture, mining, larger livestock populations, and infrastructure expansion [25,26,27,28,29]. Although these activities affect several Amazon regions, the results of these impacts vary between its areas of endemism [30]. Areas of endemism delimited by large rivers are an essential biogeographic pattern in the Amazon. They form a mosaic with a complex evolutionary history [27,30], containing biotas and unique ecological processes, which are the result of several speciation events [31]. Five of the eight endemism centers from the Amazon proposed by Silva et al. [30] are located in the Amazonian region known as the “Deforestation Arc,” where 75% of all deforestation areas are concentrated [28,32,33]. Among these, the Belém Area of Endemism (BAE) is the most impacted, with approximately 76% of its total area already deforested [27].

Currently, BAE has a large concentration of endangered Amazonian bird species, of which 56% of the region’s endemic bird species are endangered [34,35]. Birds are considered key organisms for maintaining the ecological balance within a habitat mainly because of their seed dispersal capabilities [36] and control of insect populations [37]. They also serve as efficient bioindicators due to their sensitivity to environmental change [38]. Thus, they are excellent models for understanding the effects of future climate change and for outlining both conservation and maintenance strategies of biodiversity and ecosystem services.

Species distribution models (SDMs) are commonly used tools that are efficacious in the assessment of the effects of climate change on biodiversity [39,40,41,42,43,44]. These models are based on Grinnell’s [45] niche concept, which describes the ecological niche as the distribution unit occupied by a species, where individuals are constrained by both physical and climatic variables. Thus, based on species occurrence data, and local climatic conditions, it is possible to define the species’ climatic tolerance and predict regions of potential climatic suitability to them [46]. SDMs are also used to identify climate refuge areas, which are habitats that maintain their climate patterns over time amid areas where the climate is altered [47]. In these areas, the species tend to have conserved niches, as they are not expected to adapt quickly to new climatic conditions [48,49]. Therefore, to identify these climate refuges is of paramount importance, as these areas have the necessary resources for the long-term maintenance of the species populations, even in the face of the foreseen climate changes [47,50,51,52,53]. Such assessments are fundamental, especially in landscapes undergoing fast modification [54] and

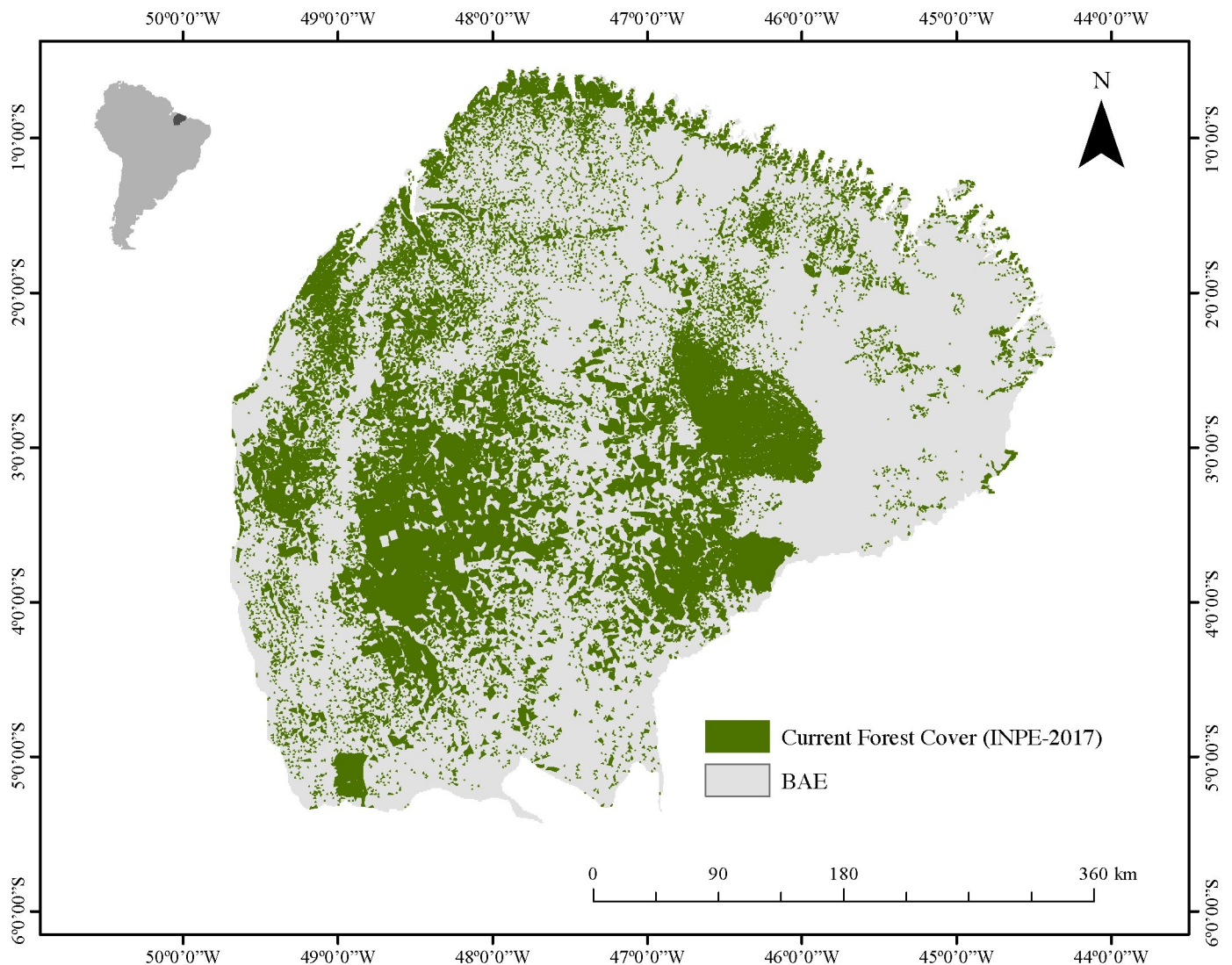
conservation opportunities become limited, and natural lands are converted into agriculture and urban areas, as is the case of the BAE.

Hence, we aimed to answer the following question: What are the current and future impacts of climate change and deforestation on the distribution of endemic birds in the Belém Area of Endemism?

## Material and methods

### Study area

The study was conducted in the Belém Area of Endemism (BAE), located in eastern Amazonia. BAE is the smallest of all Amazonian endemism centers with an extension of approximately 243,000 km<sup>2</sup> that borders both eastern Pará (Tocantins River) and western Maranhão states (Pindaré River) [27] (Fig 1).



**Fig 1. The Belém area of endemism.** Information on currently forested areas is from the National Institute for Space Research of Brazil (INPE).

<https://doi.org/10.1371/journal.pone.0236103.g001>

## Target taxa

As a selection criterion for the target taxa, we used all the 16 forest-dependent birds that inhabit the Belém area of endemism [55,56]. (Table 1).

## Occurrence data

We compiled georeferenced occurrence records available at online databases such as GBIF (<http://www.gbif.org/>), eBird (<https://ebird.org/home>), Biodiversity Portal (<https://portaldabiodiversidade.icmbio.gov.br/>), SpeciesLink (<http://splink.cria.org.br/>) and Vertnet (<http://www.vertnet.org/index.html>). We also obtained distribution records from both primary and secondary literature (books, scientific articles, theses, and published reports), the ornithology collection of the Museu Paraense Emilio Goeldi and, previous work done by the Vertebrate ecology and zoology laboratory of the Federal University of Pará and fellow researchers. Occurrence data were evaluated by experts to remove misidentified taxa. Species nomenclature adopted herein follows the Brazilian Ornithological Registration Committee recommendation [57]. Then, we controlled for sampling bias on georeferenced data by removing duplicates records leaving a single record per pixel. To reduce autocorrelation in occurrence data and possible sampling bias, we used a thinning technique using the package *spThin* [58]. Afterward, we used the distance of a Moran's I variogram that minimizes the spatial autocorrelation to define the thinning distance.

## Environmental variables

Data on the current climate scenario were obtained from the Worldclim platform (<http://www.worldclim.org>). We downloaded the 19 bioclimatic variables at a resolution of 30 seconds (~1km grid size) and performed a Pearson Correlation Test (pair-wise Pearson

**Table 1. List of endemic species and subspecies occurring in the Belém area of endemism.**

Taxa	English Name	ICMBio Threat Status [35]	IUCN Threat Status [34]
<i>Crax fasciolata pinima</i>	Belem Curassow	CR	CR
<i>Psophia obscura</i>	Black-winged Trumpeter	CR	CR
<i>Threnetes leucurus medianus</i>	Pale-tailed Barbthroat	-	LC
<i>Pteroglossus bitorquatus bitorquatus</i>	Eastern Red-necked Araçari	VU	EN
<i>Piculus paraensis</i>	Para Golden-green Woodpecker	EN	LC
<i>Thamnophilus aethiops incertus</i>	White-shouldered Antshrike	-	LC
<i>Phlegopsis nigromaculata paraensis</i>	Black-spotted Bare-eye	VU	LC
<i>Dendrocincla merula badia</i>	White-chinned Woodcreeper	VU	LC
<i>Dendrexetastes rufigula paraensis</i>	Cinnamon-throated Woodcreeper	EN	LC
<i>Synallaxis rutilans omissa</i>	Sooty Spinetail	-	LC
<i>Piprites chloris grisescens</i>	Wing-barred Piprites	VU	LC
<i>Terenotriccus erythrurus hellmayri</i>	Ruddy-tailed Flycatcher	-	LC
<i>Ramphocaenus melanurus austerus</i>	Long-billed Gnatwren	-	LC
<i>Granatellus pelzelni paraensis</i>	Rose-breasted Chat	-	LC
<i>Tangara velia signata</i>	Opal-rumped Tanager	VU	LC
<i>Lanio cristatus pallidigula</i>	Flame-Crested Tanager	-	LC

LC = Least Concern

VU = Vulnerable

EN = Endangered

CR = Critically Endangered

<https://doi.org/10.1371/journal.pone.0236103.t001>

correlation test) to identify potential collinearity between these variables (S1 Table) using the *R* software v3.4.0 [59]. When the correlation between variables was high ( $r > |0.8|$ ), we did not use one of them to generate the distribution model. Thus, we selected Average annual temperature (Bio1), Isothermality (Bio3), Temperature seasonality (Bio4), Annual precipitation (Bio12), and Precipitation of the wettest month (Bio13). To future climate scenarios (2050), we used the same variables selected for the current scenario and estimated models for 11 Atmospheric-Ocean General Circulation Models (BCC-CSM1-1, CCSM4, GISS-E2-R, HadGE-M2-AO, HadGEM2-ES, IPSL-CM5A-LR, MIROC5, MRI-CGCM3, MIROC-ESM-CHEM, MIROC-ESM, NorESM1-M), which are all available at the Worldclim database. We considered both the optimistic (rcp45) and the pessimistic (rcp85) estimates of greenhouse gas emissions. The rcp45 depicts the mitigation scenario, while the rcp85 is the baseline *business-as-usual* scenario without additional efforts to restrain gas emissions [60].

### Modeling and model evaluation

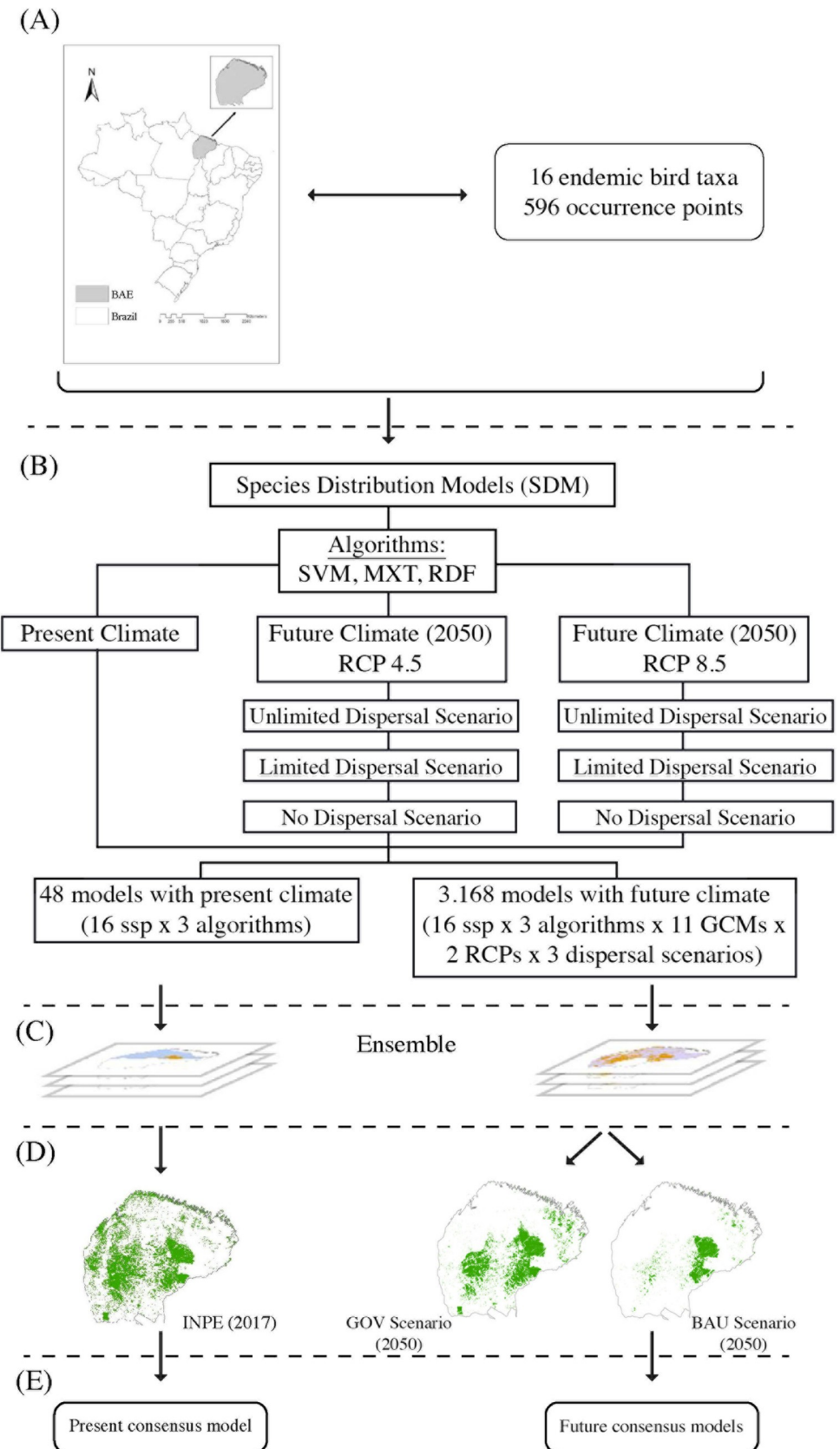
Potential species distribution modeling was performed using three different algorithms to obtain more reliable predictions of the species distribution [61]. *Maximum Entropy* (MaxEnt) [62] is based on a presence-background approach that evaluates the relationship between the actual species occurrence and the entire study area [42]. On the other hand, Support Vector Machine (SVM) [63] and Random Forest (RDF) [64] algorithms are presence-absence models that use occurrence records and compare them with absence data. For algorithms that require pseudo-absences, we used the random space allocation method [65]. The number of pseudo-absences was equal to the number of presences for each species. In order to produce more accurate models, we use the bootstrap method [66] to partition data into 70% training and 30% testing sets and repeated this procedure five times. Species Distribution Modeling analysis included in the package ENMTML [67] scripts available on GitHub ([github.com/andrefaa/ENMTML](https://github.com/andrefaa/ENMTML)). All models were generated using the *R* software.

We evaluated models using the Sorensen index [68, 69], which ranges from 0 to 1. It is a threshold-dependent method where values closer to 1 indicate greater overall model accuracy; i.e., it has high precision and good performance [69]. Subsequently, we combined all model predictions for a species to obtain its final model (full ensemble) for both the present and future scenarios. We obtained the final ensemble through the weighted average of all generated models whose values were higher than the mean Sorensen values.

Then, we applied a spatial restriction method based on species dispersal limitation [70, 71]. This approach—called here MSDM—relates the likelihood of a species' occurrence at a given site to its distance from other localities where the species has been documented. In this method, we first created a layer of the summed distance from each cell to all occurrences that were later incorporated into the model fitting [70, 72]. This procedure is available in the script used in all of our modeling process ([github.com/andrefaa/ENMTML](https://github.com/andrefaa/ENMTML)) [67] (Fig 2).

### Overlap of species distribution models and deforestation models

Knowing that these are forest-dependent species, we overlapped the SDMs with forest remnants for both present and future scenarios (Fig 2). We obtained information on currently forested areas from the Brazilian Amazon Rainforest Satellite Monitoring Program (PRODES; <http://www.obt.inpe.br/OBT/assuntos/programas/amazonia/prodes>) from the National Institute for Space Research of Brazil (INPE). Data on future forest cover have been extracted from the SimAmazonia database (<http://csr.ufmg.br/simamazonia/>, [26]), which provides two types of deforestation scenarios: *business-as-usual* (BAU) and governance (GOV). The BAU scenario assumes that novel protected areas will not be created, a low compliance rate with



**Fig 2. Concept map of the methods used in this work.** (A) the study area and the taxa information used to construct the models. (B) The production of species distribution models from the RCPs, selection of climate variables, dispersal frameworks, and the algorithms used to produce the models. (C) the ensemble approach to generate a consensus model for both present and future scenarios. (D) the overlap of species distribution models with local current forest cover (2017) and two future deforestation scenarios (2050). (E) The endemic taxa final model for the Belém area of endemism (BAE).

<https://doi.org/10.1371/journal.pone.0236103.g002>

current environmental laws, and a tendency for deforestation across the Amazon basin based on the historical deforestation rate and its variations from 1997 to 2002. On the other hand, GOV is an optimistic future deforestation scenario for 2050. It depicts a context where there would be more investments in sustainable development, greater compliance with environmental legislation, expansion of protected areas in the Amazon basin, besides taking satellite information into account in environmental licensing [26].

As our target taxa are dependent on forests, we expect that deforestation may affect the colonization potential of climatically suitable areas in the future since species tend to behave in different ways in the face of climate change and deforestation [24, 73]. Thus, we created different dispersal contexts to compare the effect of climate change on species distribution in the future, considering unlimited, limited, and no dispersal events. In the first framework, we consider unlimited dispersal, which allows species to colonize all new suitable environments. On the second one, dispersal is limited, thus reducing species ability to colonize the newly suitable areas. For this, we applied the MSDM method aforementioned. In the third scenario, we consider that the species cannot disperse into new suitable habitat, consequently being restricted to their current distribution. These three dispersal schemes combine either ‘optimistic’ or ‘pessimistic’ projections of climate change and deforestation. Therefore, our optimistic projections combine the three dispersal contexts with the rcp4.5 greenhouse gas emission model and the GOV deforestation model (Mitigation Scenario). In contrast, the pessimistic predictions combine them with the rcp8.5 greenhouse gas emission and the BAU deforestation models (*Business-as-usual* Scenario).

## Stacked species distribution models

To obtain species richness maps in the different environmental scenarios, we performed stacked-species distribution models (S-SDM) of all the species for both current and future projections. This method has already shown to be effective in several different situations [74, 75, 76]. For all stackings, we used the “raster calculator” tool available in QuantumGis 2.8 software.

## Results

We obtained a total of 596 unique occurrence records for the 16 target taxa with *Dendrexetastes rufigula paraensis* having the least number of occurrence records (7) and *Thamnophilus aethiops incertus* with the highest number of records (80) (S2 Table). The mean Sorensen index value was 0.71, ranging between 0.66 and 1 (S2 Table). The species *Threnetes leucurus medianus* was removed from the analysis because it presented results that may have been biased by the mathematical models in the dispersion calculation, due to the distribution of its occurrence records. By overlapping the taxon distribution models with the current and future forest remnant predictions for each climatic scenario, we observed an average loss of 73.80% of suitable areas in either in the mitigation and the *business-as-usual* scenarios (Table 2).

Among the most threatened taxa according to the list of Brazilian endangered species [35], *Piculus paraensis* lost its total suitable area in five combinations of dispersal-climate-

**Table 2. Estimates of loss and gain of adequate areas in relation to climatic and deforestation impacts, considering the three dispersal frameworks.** The mitigation scenario relates the optimistic climate projections (rcp45) to GOV's predicted deforestation, whereas the *Business-as-usual* scenario relates the pessimistic climate (rcp85) to the BAU deforestation predictions. The numbers indicate the percentage of variation in the size of suitable areas in the future compared to currently suitable areas. Negative values (—) indicate loss while positive values (+) indicate gains of suitable areas.

Taxa	Mitigation Scenario			<i>Business-as-usual</i> Scenario		
	Unlimited Dispersal	Limited Dispersal	No Dispersal	Unlimited Dispersal	Limited Dispersal	No Dispersal
<i>Crax fasciolata pinima</i>	+59.57%	+59.57%	-73.54%	-99.89%	-37.08%	-80.24%
<i>Psophia obscura</i>	-9.45%	-97.19%	-99.74%	-88.22%	-99.26%	-99.97%
<i>Pteroglossus bitorquatus bitorquatus</i>	-13.59%	-13.59%	-73.20%	-100%	-42.25%	-79.74%
<i>Piculus paraensis</i>	+17.57%	-100.00%	-100.00%	-100%	-100.00%	-100.00%
<i>Thamnophilus aethiops incertus</i>	-100.00%	-82.07%	-85.61%	-89.49%	-77.26%	-81.83%
<i>Phlegopsis nigromaculata paraensis</i>	-26.46%	-28.02%	-58.71%	-92.96%	-69.67%	-93.84%
<i>Dendrocincla merula badia</i>	+14.95%	+14.95%	-65.66%	-99.98%	-53.96%	-87.56%
<i>Dendrexetastes rufifigula paraensis</i>	-100.00%	-100.00%	-100.00%	-99.72%	-100.00%	-100.00%
<i>Synallaxis rutilans omissa</i>	-38.48%	-37.97%	-59.96%	-83.76%	-72.08%	-79.86%
<i>Piprites chloris grisescens</i>	-100.00%	-100.00%	-100.00%	-99.10%	-100.00%	-100.00%
<i>Terenotriccus erythrurus hellmayri</i>	-100.00%	-100.00%	-100.00%	-98.18%	-100.00%	-100.00%
<i>Ramphocaenus melanurus austerus</i>	-28.13%	-27.96%	-58.00%	-83.17%	-71.59%	-80.46%
<i>Granatellus pelzelni paraensis</i>	-99.85%	-94.07%	-99.44%	-100%	-94.13%	-94.13%
<i>Tangara velia signata</i>	+4.79%	+4.79%	-67.45%	-100%	-58.68%	-91.73%
<i>Lanio cristatus pallidigula</i>	-100.00%	-100.00%	-100.00%	-100%	-100.00%	-100.00%

<https://doi.org/10.1371/journal.pone.0236103.t002>

deforestation scenarios while *D. r. paraensis* was profoundly affected in all of the combinations (S1 Fig). Besides, *Psophia obscura*, which is considered “critically endangered,” according to IUCN [34], may also lose 68.67% and 95.82% of the adequate areas in the mitigation and the *business-as-usual* scenarios, respectively. *Lanio cristatus pallidigula* was the only taxon that we did not find future climatically suitable areas in any dispersal contexts or deforestation projections. Thus, this species faces a high risk of being extinct by the year 2050 (Table 2, S1 Fig).

We found variations between loss and gain of adequate areas for species in both the optimistic and pessimistic predictions. In the mitigation scenario, the average loss of suitable areas for the future is 59%. On the one hand, when analyzing the dispersal contexts in the mitigation framework (GOV), the unlimited dispersal scenario presents an attenuated impact on bird species compared to the other dispersal models, with an average loss of 41.27% of the adequate area. Surprisingly, when we assumed unlimited dispersal, four species have adequate area gains, with *Crax fasciolata pinima* (+59%) showing the most significant area increment. On the other hand, we found that average area loss was 12% higher when dispersal was limited, even though *C. f. pinima*, *P. paraensis*, *Dendrocincla merula badia*, and *Tangara velia signata* still showed the same percentages of area expansion in the unlimited dispersal scenario (Table 2, S1 Fig).

The no-dispersal framework shows the most extreme negative results in mitigation projections, where there was an average loss of 82% of suitable areas for the occurrence of the endemic birds, of which eight of them have losses above 80% of their current occurrence geographic range. We also did not find evidence of area expansion for any of the studied taxa (Table 2). Our results indicate that there is no adequate area for *D. R. paraensis*, *Piprites chloris grisescens*, and *Terenotriccus erythrurus hellmayri* in future mitigation scenarios.

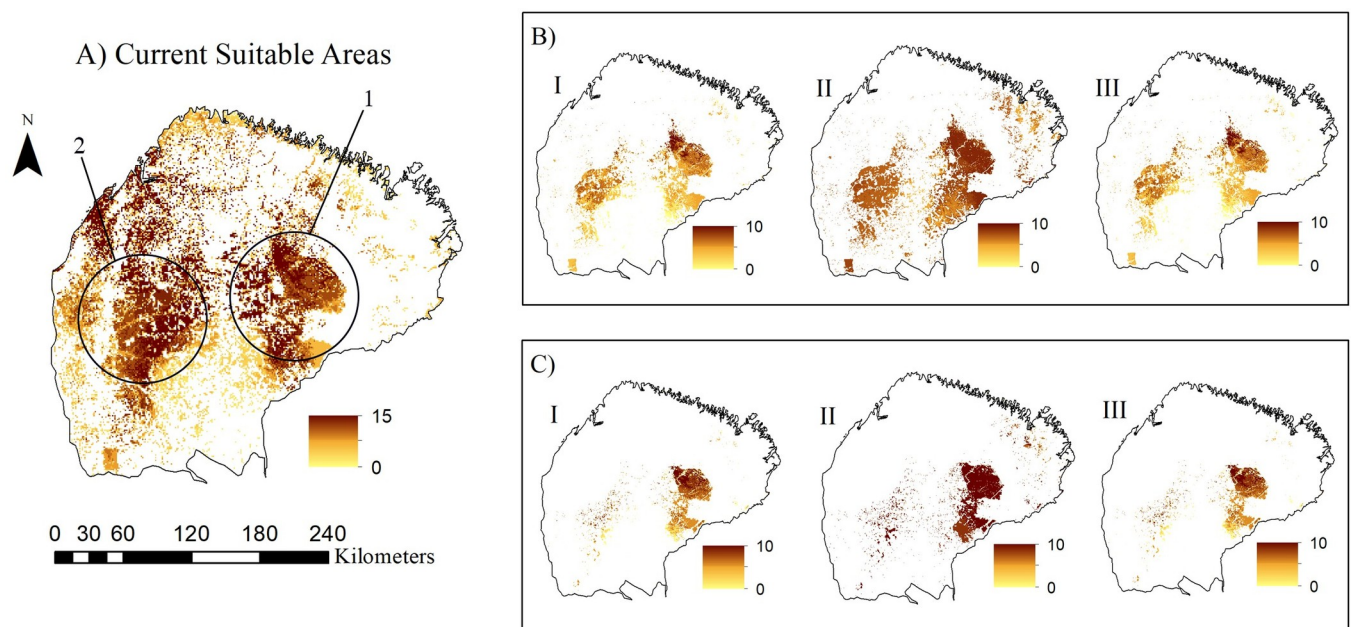
The *business-as-usual* scenario shows that even considering three conditions of dispersal (Unlimited, Limited and No dispersal), there was a substantial reduction of adequate area (average: 88%) for all species, i.e., even in a scenario where species can freely disperse, there will be few suitable areas for the establishment of populations. In the *business-as-usual*



deforestation projection (BAU) with unlimited dispersal, we found an average contraction of 95% of the suitable areas in which 11 species lost more than 90% of the adequate areas. Among these species that lost their entire suitable area are *Pteroglossus bitorquatus bitorquatus*, *P. paraensis*, *Granatellus pelzelni paraensis*, *Tangara velia signata*, and *Lanio cristatus pallidigula* (Table 2, S1 Fig). Moreover, these species also lost total habitat in the no-dispersal scenario, with an average loss of 90%. The limited dispersion context is the one that presents less drastic results compared to the other ones, since it indicates an average habitat loss of 78%, however, there was no suitable area expansion for any of the species.

The bird species richness per cell in BAE ranged from 0 to 15 and 0 to 10 in the current and future projections, respectively, due to the lack of environmental suitability in the dispersal frameworks we assumed herein. In both optimistic and pessimistic projections, species richness are mainly concentrated in the central-eastern region of BAE in all dispersal frameworks. In addition to the concentration of bird species in this region, the projections for the *business-as-usual* scenario indicate the existence of adequate area fragments in the southwest portion of the BAE (Fig 3). In contrast, in the mitigation scenario, species richness is concentrated mainly in the middle east, middle west, and south regions (Fig 3). Moreover, the results reveal a low concentration of suitable areas near the Tocantins River and BAE's northern region in all scenarios.

The limited dispersal scenario indicates the existence of adequate area fragments in the northeastern region of the BAE in both mitigation and *business-as-usual* scenarios. Such circumstances suggest possible movements of species to this region since these areas harbor lower richness and distribution of species in the current climatic and deforestation conditions (Fig 3). The results also reinforce the importance of the protected areas existing in the BAE



**Fig 3. Maps of the potential distribution of endemic bird species from the Belém Area of Endemism.** 1—"Gurupi Mosaic"; 2—"Rio-Capim" watershed. (A) represents the current climate suitability areas, while (B) represents the mitigation scenario, and (C) the *Business-as-usual* scenario. Regarding different dispersion contexts, sections (I), (II), and (III) demonstrate the Unlimited Dispersal, Limited Dispersal, and No Dispersal scenarios, respectively. Dispersal scenarios were applied to the projections. The mitigation and *business-as-usual* scenarios applied are projections constructed from perspectives of greenhouse gas emissions, and investments in conservation policies. Colors that vary between yellow and brown represent the number of species per cell in the projections. Both projections of forest remnants have been extracted from the SimAmazonia database [26].

<https://doi.org/10.1371/journal.pone.0236103.g003>

since projections predict the incidence of high species richness within or around these areas (Fig 3). Additionally, when comparing the currently appropriate areas for species to occur with the dispersal and deforestation scenarios, it is possible to note the occurrence of areas that can act as climatic refuges for the species, especially in the regions known as “Mosaico do Gurupi” and “Rio Capim” watershed (Area 1 and 2, Fig 3).

## Discussion

Our results indicate that BAE’s endemic birds will lose an average of 73% of their suitable areas by 2050. Moreover, at least six of these 15 bird species will have either less than 10% or even no suitable areas for their occurrence in all scenarios we analyzed. Since they are highly dependent on forest habitats, these species are already undergoing strong reductions in their habitat because of the high rates of deforestation in the BAE [27].

Based on the parameters to define the threat status of a species [77,78], the projections performed in this study indicate a probable change in the threat status of our target taxa. Among these parameters, the extent of occurrence and area of occupation of the taxa of the Belém endemism center may considerably decrease by 2050 (Table 2, S1 Fig). Habitat loss is another factor that determines the threat status of the species [77], and a reduction of adequate habitat implies reduced species distribution and enhances its risk of extinction [79]. This factor mainly affects species such as *C. f. pinima* and *P. obscura*, both currently classified as critically endangered (Table 1). Besides, our results support a general pattern of suitable area loss in both the mitigation and *business-as-usual* scenarios, which has also been found in several studies in recent years. The reduction of suitable habitat areas as a consequence of climate change has been reported not only for birds but also for a myriad of different organisms, such as mammals and plants [44,80,81]. Jetz et al. [82] evaluated the effect of climate change on birds worldwide and showed that the occurrence area of hundreds of species would reduce by 50%, and the most affected species would be those inhabiting in tropical regions. Anciães & Peterson [83], who studied the effect of climate change on 49 species of manakins (Pipridae), found that at least 20% of all species will be locally extinct from their current distribution, and species occurring in the Amazonian lowlands would be the most affected. Thus, the species of birds that would be most affected by climate change tend to be those that occur in tropical regions, especially those that live in lowlands and have restricted spatial distribution, such as the birds that occur in BAE.

Although climatic fluctuations in the tropical region are smaller compared to other regions [84], the high level of Amazonian species specialization may accelerate the consequences caused by changes in climate [85], which reduces their chances to adapt to such novel environmental circumstances [38,82,86]. Additionally, deforestation is determinant in habitat loss [87], and becomes an aggravating factor for BAE’s taxa, as they are highly dependent on forest environments. These factors combined with anthropogenic activities, restricted distributions, and low dispersal ability, in virtue of species endemism, can lead to severe population declines and, consequently, the loss of genetic variability [88], exposing the taxa to a higher risk of extinction. Assuming that a loss of suitable areas over 95% means a high risk of extinction [83], then at least 40% of our target species would be extinct by 2050 in any dispersion scenario (Table 2).

The predicted loss of suitable areas for BAE’s endemic taxa can culminate in considerable losses of ecological services—e.g., seed dispersal—and maintaining the forest itself [89,90]. For instance, frugivores species such as *P. b. bitorquatus*, *C. f. pinima* e *T. v. signata*, which are endemic to BAE [91, 92, 93] and play a key role on dispersing seeds from this region, is predicted to lose 44,57% of suitable habitat areas in future scenarios (Table 2, S1 Fig). Moreover,

climate may directly influence the metabolism and reproductive success of birds [94,95] because it influences the incubation rates since high temperatures can reduce reproductive success [96]. Also, forest birds are particularly vulnerable to landscape changes; thus, many species are now restricted to smaller areas as a result of deforestation, and this has broader implications for ecosystem function [89].

The association between climate change and reduced habitat suitability has been a determinant factor in population reductions of various species worldwide, especially when it comes to endemic or species that have restricted distribution [82,97]. One of the main mechanisms used to mitigate the impacts of climate change on these species in the near future is to assess the current system of protected areas. It is necessary to ensure that these areas will continue being effective in conserving these species even under climate change [98,99,100]. Thus, the challenge is to assess whether protected areas that are already established will be appropriate for the bird species in the future, or whether we will have suitable forest remnant patches in the areas that are not protected. Despite the existence of protected areas in the studied region, their effectiveness in conserving bird species is low. Only 20% of the taxon distribution falls within the protected areas in the Belém Area of Endemism. Such low effectiveness may be related to the low percentage of protected areas existing within the Belem Area of Endemism [30]. Approximately 3,100 km<sup>2</sup> of protected forests were cleared in 2016, a loss of 17.2% of their original extension [101], therefore further impacting species occurrence within the protected lands in the region. Such high levels of deforestation can affect mainly taxa in the future scenario since, in all projections (mitigation and *business-as-usual*) and multiple dispersal scenarios, the highest concentration of co-occurring species are within or around the protected forests (Fig 3).

The “Gurupi Mosaic” (Area 1 of Fig 3), which includes the Gurupi Biological Reserve (only federal UC of Integral Protection in BAE) and a complex of six Indigenous lands (Alto Turiaçu, Awá, Caru, Arariboia, Pindaré River and Alto Guamá River) stands out for the protection of BAE’s endemic bird species in all the dispersal frameworks in both mitigation and *business-as-usual* projections. This mosaic houses the largest remnant of the Amazon forest in BAE; thus, it is of paramount biological and socio-environmental importance. Also, inside this area, there is a high diversity of plants and animals, which includes more than 46 endemic and endangered species [102]. The taxa assessed in the present work are found within this complex, including the critically endangered *C. pinima* and *P. obscura* [103,104]. Additionally, *Chiroptotes satanas* and *Cebus kaapori*—the latter being among the 25 species that are at the highest risk of extinction of the World—can also be found in this region [105,106]. Despite its importance for conservation, the “Gurupi Mosaic” has undergone a dramatic reduction in forest cover due to the significant increase in illegal logging [103].

The “Rio-Capim” watershed is also an area that also deserves some attention. This region is a complex formed by private properties that also protect a large portion of the forest remnants of the BAE (Area 2 of Fig 3). Currently, Brazil has 53% of its forest areas in private properties [107], which increases the importance of these areas for the maintenance of forest-dependent fauna [108,109]. These areas can play an important role, functioning as stepping stones [110] and ecological corridors for all endemic species, as they favor their movement across the landscape, therefore functioning as complementary conservation areas [111,112]. These ecological corridors are relevant for conservation, to connect populations inhabiting fragmented regions [111,113], facilitate gene flow between populations, and ensure species dispersal [88].

These two large areas, identified through our analyses as climate refuges, are a good alternative for the conservation of BAE’s species, as they are areas of climatic stability, housing species and allowing their persistence in case of niche changes [51,114]. The climatic refuges of the BAE are mainly concentrated within protected areas, which reinforces their importance as

main regions for the conservation of species [115,116,117]. However, few areas could serve as ecological corridors between these two areas. Thus, conservation efforts should be directed to the maintenance and preservation of these two significant remnants of vegetation in addition to the establishment of ecological corridors between them.

## Supporting information

**S1 Fig. Suitability models for endemic birds of the Belem Area of Endemism (BAE) on both climate-deforestation scenarios.** Black lines and white area delimits the BAE region. Areas in yellow represents the potential distribution of each taxon based on current and future scenarios. From left to right, maps indicate, respectively: Potential distribution for the present-time, potential distribution in a mitigation scenario with unlimited dispersal (Mit\_Unlim\_Disp), potential distribution in a mitigation scenario with limited dispersal (Mit\_Lim\_Disp), potential distribution in a mitigation scenario with no-dispersal (Mit\_No\_Disp), potential distribution in a *Business-as-usual* scenario with unlimited dispersal (BAU\_Unlim\_Disp), potential distribution in a *Business-as-usual* scenario with limited dispersal (BAU\_Lim\_Disp), potential distribution in a *Business-as-usual* scenario with no-dispersal (BAU\_No\_Disp). (PDF)

**S1 Table. Worldclim bioclimatic variables table.** (XLSX)

**S2 Table. Species distribution models data information.** (XLSX)

## Acknowledgments

We thank the ornithologist Pablo Vieira Cerqueira for helping us to build the list of BAE's endemic bird species.

## Author Contributions

**Conceptualization:** Kauê Felipe de Moraes, Marcos Pêrsio Dantas Santos, Gabriela Silva Ribeiro Gonçalves, Marcela Guimarães Moreira Lima.

**Data curation:** Kauê Felipe de Moraes, Marcos Pêrsio Dantas Santos, Leticia Braga Gomes, Marcela Guimarães Moreira Lima.

**Formal analysis:** Kauê Felipe de Moraes, Gabriela Silva Ribeiro Gonçalves, Geovana Linhares de Oliveira, Leticia Braga Gomes.

**Investigation:** Kauê Felipe de Moraes, Marcos Pêrsio Dantas Santos, Gabriela Silva Ribeiro Gonçalves, Marcela Guimarães Moreira Lima.

**Methodology:** Kauê Felipe de Moraes, Marcos Pêrsio Dantas Santos, Gabriela Silva Ribeiro Gonçalves, Geovana Linhares de Oliveira, Leticia Braga Gomes.

**Project administration:** Kauê Felipe de Moraes, Marcos Pêrsio Dantas Santos, Gabriela Silva Ribeiro Gonçalves.

**Resources:** Kauê Felipe de Moraes, Marcos Pêrsio Dantas Santos.

**Software:** Kauê Felipe de Moraes, Gabriela Silva Ribeiro Gonçalves, Geovana Linhares de Oliveira, Leticia Braga Gomes.

**Supervision:** Kauê Felipe de Moraes, Marcos Pêrsio Dantas Santos, Gabriela Silva Ribeiro Gonçalves, Marcela Guimarães Moreira Lima.

**Validation:** Kauê Felipe de Moraes, Marcos Pêrsio Dantas Santos, Gabriela Silva Ribeiro Gonçalves, Geovana Linhares de Oliveira, Leticia Braga Gomes, Marcela Guimarães Moreira Lima.

**Visualization:** Kauê Felipe de Moraes, Marcos Pêrsio Dantas Santos, Gabriela Silva Ribeiro Gonçalves, Marcela Guimarães Moreira Lima.

**Writing – original draft:** Kauê Felipe de Moraes, Marcos Pêrsio Dantas Santos, Gabriela Silva Ribeiro Gonçalves, Geovana Linhares de Oliveira, Marcela Guimarães Moreira Lima.

**Writing – review & editing:** Kauê Felipe de Moraes, Marcos Pêrsio Dantas Santos, Gabriela Silva Ribeiro Gonçalves, Geovana Linhares de Oliveira, Marcela Guimarães Moreira Lima.

## References

1. Fearnside PM. Greenhouse gases from deforestation in Brazilian Amazonia: Net committed emissions. *Clim Change*. 1997; 35: 321–360. <https://doi.org/10.1023/A:1005336724350>
2. Cox PM, Betts RA, Jones CD, Spall SA, Totterdell IJ. Acceleration of global warming due to carbon-cycle feedbacks in a coupled climate model. *Nature*. 2000; 408: 184–187. <https://doi.org/10.1038/35041539> PMID: 11089968
3. Solomon S, Plattner GK, Knutti R, Friedlingstein P. Irreversible climate change due to carbon dioxide emissions. *Proc Natl Acad Sci U S A*. 2009; 106: 1704–1709. <https://doi.org/10.1073/pnas.0812721106> PMID: 19179281
4. Esquivel-Muelbert A, Baker TR, Dexter KG, Lewis SL, Brienen RJW, Feldpausch TR, et al. Compositional response of Amazon forests to climate change. *Glob Chang Biol*. 2019; 25: 39–56. <https://doi.org/10.1111/gcb.14413> PMID: 30406962
5. Walter Anthony KM, Anthony P, Grosse G, Chanton J. Geologic methane seeps along boundaries of Arctic permafrost thaw and melting glaciers. *Nat Geosci*. 2012; 5: 419–426. <https://doi.org/10.1038/ngeo1480>
6. Polade SD, Pierce DW, Cayan DR, Gershunov A, Dettinger MD. The key role of dry days in changing regional climate and precipitation regimes. *Sci Rep*. 2015; 4: 1–8. <https://doi.org/10.1038/srep04364> PMID: 24621567
7. Tylianakis JM, Didham RK, Bascompte J, Wardle DA. Global change and species interactions in terrestrial ecosystems. *Ecol Lett*. 2008; 11: 1351–1363. <https://doi.org/10.1111/j.1461-0248.2008.01250.x> PMID: 19062363
8. Hughes L. Biological consequences of global warming: is the signal already apparent? *Trends Ecol Evol*. 2000; 15: 56–61. [https://doi.org/10.1016/s0169-5347\(99\)01764-4](https://doi.org/10.1016/s0169-5347(99)01764-4) PMID: 10652556
9. Root TL, Price JT, Hall KR, Schneider SH, Rosenzweig C, Pounds JA. Fingerprints of global warming on wild animals and plants. *Nature*. 2003; 421: 57–60. <https://doi.org/10.1038/nature01333> PMID: 12511952
10. Parmesan C. Ecological and Evolutionary Responses to Recent Climate Change. *Annu Rev Ecol Syst*. 2006; 37: 637–669. <https://doi.org/10.1146/annurev.ecolsys.37.091305.110100>
11. Bellard C, Bertelsmeier C, Leadley P, Thuiller W, Courchamp F. Impacts of climate change on the future of biodiversity. *Ecol Lett*. 2012; 15: 365–377. <https://doi.org/10.1111/j.1461-0248.2011.01736.x> PMID: 22257223
12. Soto-Correa JC, Sáenz-Romero C, Lindig-Cisneros R, de la Barrera E. The neotropical shrub *Lupinus elegans*, from temperate forests, may not adapt to climate change. *Elzenga T*, editor. *Plant Biol*. 2013; 15: 607–610. <https://doi.org/10.1111/j.1438-8677.2012.00716.x> PMID: 23696969
13. Pecl GT, Araújo MB, Bell JD, Blanchard J, Bonebrake TC, Chen I-C, et al. Biodiversity redistribution under climate change: Impacts on ecosystems and human well-being. *Science*. 2017; 355: eaai9214. <https://doi.org/10.1126/science.aai9214> PMID: 28360268
14. Tabor K, Hewson J, Tien H, González-Roglich M, Hole D, Williams J. Tropical Protected Areas Under Increasing Threats from Climate Change and Deforestation. *Land*. 2018; 7: 90. <https://doi.org/10.3390/land7030090>
15. Davies TJ, Purvis A, Gittleman JL. Quaternary Climate Change and the Geographic Ranges of Mammals. *Am Nat*. 2009; 174: 297–307. <https://doi.org/10.1086/603614> PMID: 19627231

16. Ribeiro BR, Sales LP, De Marco P, Loyola R. Assessing mammal exposure to climate change in the Brazilian Amazon. *PLoS One*. 2016; 11:1–13. <https://doi.org/10.1371/journal.pone.0165073> PMID: 27829036
17. Miranda LS, Imperatriz-Fonseca VL, Giannini TC. Climate change impact on ecosystem functions provided by birds in southeastern Amazonia. Rigal F, editor. *PLoS One*. 2019; 14: e0215229. <https://doi.org/10.1371/journal.pone.0215229> PMID: 30973922
18. de Souza RA, Miziara F, de Marco Junior P. Spatial variation of deforestation rates in the Brazilian Amazon: A complex theater for agrarian technology, agrarian structure and governance by surveillance. *Land use policy*. 2013; 30:915–24. <https://doi.org/10.1016/j.landusepol.2012.07.001>
19. Sonter LJ, Herrera D, Barrett DJ, Galford GL, Moran CJ, Soares-Filho BS. Mining drives extensive deforestation in the Brazilian Amazon. *Nat Commun*. 2017; 8:1–7. <https://doi.org/10.1038/s41467-016-0009-6> PMID: 28232747
20. Achard F, Eva HD, Stibig H, Mayaux P, Gallego J, Richards T, et al. Determination of Deforestation Rates of the World's Humid Tropical Forests. *Science*. 2002; 297: 999–1002. <https://doi.org/10.1126/science.1070656> PMID: 12169731
21. Salazar LF, Nobre CA, Oyama MD. Climate change consequences on the biome distribution in tropical South America. *Geophys Res Lett*. 2007; 34: L09708. <https://doi.org/10.1029/2007GL029695>
22. Anjos LJS, de Toledo PM. Measuring resilience and assessing vulnerability of terrestrial ecosystems to climate change in South America. Silva LCR, editor. *PLoS One*. 2018; 13: e0194654. <https://doi.org/10.1371/journal.pone.0194654> PMID: 29554132
23. Malhi Y, Roberts JT, Betts RA, Killeen TJ, Li W, Nobre CA. Climate Change, Deforestation, and the Fate of the Amazon. *Science*. 2008; 319: 169–172. <https://doi.org/10.1126/science.1146961> PMID: 18048654
24. Buchanan GM, Donald PF, Butchart SHM. Identifying Priority Areas for Conservation: A Global Assessment for Forest-Dependent Birds. Brown JD, editor. *PLoS One*. 2011; 6: e29080. <https://doi.org/10.1371/journal.pone.0029080> PMID: 22205998
25. Fujisaka S, Bell W, Thomas N, Hurtado L, Crawford E. Slash-and-burn agriculture, conversion to pasture, and deforestation in two Brazilian Amazon colonies. *Agric Ecosyst Environ*. 1996; 59: 115–130. [https://doi.org/10.1016/0167-8809\(96\)01015-8](https://doi.org/10.1016/0167-8809(96)01015-8)
26. Soares-Filho BS, Nepstad DC, Curran LM, Cerqueira GC, Garcia RA, Ramos CA, et al. Modelling conservation in the Amazon basin. *Nature*. 2006; 440: 520–523. <https://doi.org/10.1038/nature04389> PMID: 16554817
27. Almeida AS, Vieira ICG. Centro de Endemismo Belém: status da vegetação remanescente e desafios para a conservação da biodiversidade e restauração ecológica. *Rev Estud Univ*. 2010; 36: 95–111. Available from: <https://doi.org/10.1007/s13398-014-0173-7.2>
28. Domingues MS, Bermann C. O arco de desflorestamento na Amazônia: da pecuária à soja. *Ambient Soc*. 2012; 15: 1–22. <https://doi.org/10.1590/S1414-753X2012000200002>
29. Asner GP, Llactayo W, Tupayachi R, Luna ER. Elevated rates of gold mining in the Amazon revealed through high-resolution monitoring. *Proc Natl Acad Sci*. 2013; 110: 18454–18459. <https://doi.org/10.1073/pnas.1318271110> PMID: 24167281
30. Silva JMC Da, Rylands AB, Fonseca GAB da. O destino das áreas de endemismo da Amazônia. *Megadiversidade*. 2005; 1: 124–131.
31. Ribas CC, Aleixo A, Nogueira ACR, Miyaki CY, Cracraft J. A palaeobiogeographic model for biotic diversification within Amazonia over the past three million years. *Proc R Soc B Biol Sci*. 2012; 279: 681–689. <https://doi.org/10.1098/rspb.2011.1120> PMID: 21795268
32. Capobianco JPRA, Veríssimo A, Moreira A, Sawyer D., Ikeda S., Pinto LP. Biodiversidade na Amazônia Brasileira: Avaliação de Ações Prioritárias para a Conservação, Uso Sustentável e Repartição de Benefícios (eds.) São Paulo. Editora Estação Liberdade e Instituto Socioambiental. 2001.
33. Almeida AS, Rocha DDiPN, Barros NMR, Lameira WJDeM, Silva RDosS, Cardoso AS. Cenários para a Amazônia—Área de Endemismo Belém. Belém. Sumário Executivo. 2013: MPEG.
34. IUCN. The IUCN Red List of Threatened Species. Version 2020–1. 2020 Available from: <https://www.iucnredlist.org>
35. ICMBio—Instituto Chico Mendes de Conservação da Biodiversidade. 2018. Livro Vermelho da Fauna Brasileira Ameaçada de Extinção: Volume III—Aves. Brasília. ICMBio. 2018.
36. Christianini A V., Oliveira PS. Birds and ants provide complementary seed dispersal in a neotropical savanna. *J Ecol*. 2010; 98: 573–582. <https://doi.org/10.1111/j.1365-2745.2010.01653.x>
37. Marquis RJ, Whelan CJ. Insectivorous Birds Increase Growth of White Oak through Consumption of Leaf-Chewing Insects. *Ecology*. 1994; 75: 2007–2014. <https://doi.org/10.2307/1941605>

38. Şekercioğlu ÇH, Primack RB, Wormworth J. The effects of climate change on tropical birds. *Biol Conserv.* 2012; 148: 1–18. <https://doi.org/10.1016/j.biocon.2011.10.019>
39. Guisan A, Zimmermann NE. Predictive habitat distribution models in ecology. *Ecol Modell.* 2000; 135: 147–186. [https://doi.org/10.1016/S0304-3800\(00\)00354-9](https://doi.org/10.1016/S0304-3800(00)00354-9)
40. Peterson AT. Uses and Requirements of Ecological Niche Models and Related Distributional Models. *Biodivers Informatics.* 2006; 3: 59–72. <https://doi.org/10.17161/bi.v3i0.29>
41. Elith J, Leathwick JR. Species Distribution Models: Ecological Explanation and Prediction Across Space and Time. *Annu Rev Ecol Evol Syst.* 2009; 40: 677–697. <https://doi.org/10.1146/annurev.ecolsys.110308.120159>
42. Peterson AT, Soberon J, Pearson RG, Anderson RP, Martinez-Meyer E, Nakamura M, et al. *Ecological Niches and Geographic Distributions.* Princeton University Press. New Jersey. 2011.
43. Pena JCDC, Goulart F, Fernandes GW, Hoffmann D, Leite FSF, Santos NB, et al. Impacts of mining activities on the potential geographic distribution of eastern Brazil mountaintop endemic species. *Perspect Ecol Conserv.* 2017; 15: 172–178. <https://doi.org/10.1016/j.pecon.2017.07.005>
44. Carvajal MA, Alaniz AJ, Smith-Ramírez C, Sieving KE. Assessing habitat loss and fragmentation and their effects on population viability of forest specialist birds: Linking biogeographical and population approaches. Syphard A, editor. *Divers Distrib.* 2018; 24: 820–830. <https://doi.org/10.1111/ddi.12730>
45. Grinnell J. *Geography and Evolution.* Ecology. 1924; 5: 225–229. <https://doi.org/10.2307/1929447>
46. Anderson RP, Lew D, Peterson AT. Evaluating predictive models of species' distributions: criteria for selecting optimal models. *Ecol Modell.* 2003; 162: 211–232. [https://doi.org/10.1016/S0304-3800\(02\)00349-6](https://doi.org/10.1016/S0304-3800(02)00349-6)
47. Keppel G, Van Niel KP, Wardell-Johnson GW, Yates CJ, Byrne M, Mucina L, et al. Refugia: identifying and understanding safe havens for biodiversity under climate change. *Glob Ecol Biogeogr.* 2012; 21: 393–404. <https://doi.org/10.1111/j.1466-8238.2011.00686.x>
48. Parmesan C, Yohe G. A globally coherent fingerprint of climate change impacts across natural systems. *Nature.* 2003; 421: 37–42. <https://doi.org/10.1038/nature01286> PMID: 12511946
49. Peterson AT, Nyári ÁS. Ecological niche conservatism and pleistocene refugia in the thrush-like Mourner, *Schiffornis* sp., in the neotropics. *Evolution.* 2008; 62: 173–183. <https://doi.org/10.1111/j.1558-5646.2007.00258.x> PMID: 18005155
50. Lemes P, Loyola RD. Accommodating Species Climate-Forced Dispersal and Uncertainties in Spatial Conservation Planning. Flammini A, editor. *PLoS One.* 2013; 8: e54323. <https://doi.org/10.1371/journal.pone.0054323> PMID: 23349850
51. Carnaval AC, Hickerson MJ, Haddad CFB, Rodrigues MT, Moritz C. Stability Predicts Genetic Diversity in the Brazilian Atlantic Forest Hotspot. *Science.* 2009; 323: 785–789. <https://doi.org/10.1126/science.1166955> PMID: 19197066
52. Terribile LC, Lima-Ribeiro MS, Araújo MB, Bizão N, Collevatti RG, Dobrovolski R, et al. Areas of climate stability of species ranges in the Brazilian cerrado: Disentangling uncertainties through time. *Nat a Conserv.* 2012; 10: 152–159. <https://doi.org/10.4322/natcon.2012.025>
53. Collevatti RG, Terribile LC, de Oliveira G, Lima-Ribeiro MS, Nabout JC, Rangel TF, et al. Drawbacks to palaeodistribution modelling: The case of South American seasonally dry forests. *J Biogeogr.* 2013; 40: 345–358. <https://doi.org/10.1111/jbi.12005>
54. Pressey RL, Cabeza M, Watts ME, Cowling RM, Wilson KA. Conservation planning in a changing world. *Trends Ecol Evol.* 2007; 22: 583–592. <https://doi.org/10.1016/j.tree.2007.10.001> PMID: 17981360
55. Roma JC. Composição de vulnerabilidade da avifauna do leste do estado do Pará, Brasil. Belém: Pós-Graduação em Ciências Biológicas. M. Sc. Thesis. Universidade Federal do Pará. 1996. Available at: [https://www.researchgate.net/publication/234875134\\_Composicao\\_e\\_vulnerabilidade\\_da\\_avifauna\\_do\\_leste\\_do\\_estado\\_do\\_Para\\_Brasil](https://www.researchgate.net/publication/234875134_Composicao_e_vulnerabilidade_da_avifauna_do_leste_do_estado_do_Para_Brasil).
56. Portes CEB, Carneiro LS, Schunck F, de Sousa e Silva MS, Zimmer KJ, Whittaker A, et al. Annotated checklist of birds recorded between 1998 and 2009 at nine areas in the belém area of endemism, with notes on some range extensions and the conservation status of endangered species. *Rev Bras Ornitol.* 2011; 19: 167–184.
57. Piacentini VQ, Aleixo A, Agne CE, Maurício GN, Pacheco JF, Bravo GA, et al. Annotated checklist of the birds of Brazil by the Brazilian Ornithological Records Committee/Lista comentada das aves do Brasil pelo Comitê Brasileiro de Registros Ornitológicos. *Rev Bras Ornitol.* 2015; 23: 91–298.
58. Aiello-Lammens ME, Boria RA, Radosavljevic A, Vilela B, Anderson RP. spThin: An R package for spatial thinning of species occurrence records for use in ecological niche models. *Ecography (Cop).* 2015; 38: 541–545. <https://doi.org/10.1111/ecog.01132>

59. R CORE TEAM. R: A language and environment for statistical computing. *R J* Version 3.4.0 [software]. Vienna, Austria. 2017. [accessed September 16, 2019]. Available in: <https://www.R-project.org/>.
60. IPCC. Climate Change 2014: Synthesis Report. Contribution of Working Groups I, II and III to the Fifth Assessment Report of the Intergovernmental Panel on Climate Change [Core Writing Team, R.K. Pachauri and L.A. Meyer (eds.)]. IPCC, Geneva, Switzerland, 2014, 151 pp.
61. Rocchini D, Hortal J, Lengyel S, Lobo JM, Jiménez-Valverde A, Ricotta C, et al. Accounting for uncertainty when mapping species distributions: The need for maps of ignorance. *Prog Phys Geogr*. 2011; 35: 211–226. <https://doi.org/10.1177/0309133311399491>
62. Phillips SJ, Dudík M. Modeling of species distributions with Maxent: new extensions and a comprehensive evaluation. *Ecography (Cop)*. 2008; 31: 161–175. <https://doi.org/10.1111/j.2007.0906-7590.05203.x>
63. Tax DMJ, Duin RPW. Support Vector Data Description. *Machine Learning*. 2004; 54: 45–66.
64. Breiman L. Random forests. *Machine Learning*. 2001; 45:5–32.
65. Zaniwski AE, Lehmann A, Overton JMC. Predicting species spatial distributions using presence-only data: A case study of native New Zealand ferns. *Ecol Modell*. 2002; 157: 261–280. [https://doi.org/10.1016/S0304-3800\(02\)00199-0](https://doi.org/10.1016/S0304-3800(02)00199-0)
66. Buckland ST, Elston DA. Empirical Models for the Spatial Distribution of Wildlife. *J Appl Ecol*. 1993; 30: 478. <https://doi.org/10.2307/2404188>
67. Andrade AFA de, Velazco SJE, De Marco Júnior P. ENMTML: An R package for a straightforward construction of complex ecological niche models. *Environ Model Softw*. 2020; 125: 104615. <https://doi.org/10.1016/j.envsoft.2019.104615>
68. Sørensen T. A Method of Establishing Groups of Equal Amplitude in Plant Sociology Based on Similarity of Species Content and its Application to Analyses of the Vegetation on Danish Commons. *Det K Danske Vidensk Selsk Biol Skr*. 1948; 5: 1–34. Available: <http://www.tandfonline.com/doi/full/10.3109/00016924809131205>
69. Leroy B, Delsol R, Hugueny B, Meynard CN, Barhoumi C, Barbet-Massin M, et al. Without quality presence–absence data, discrimination metrics such as TSS can be misleading measures of model performance. *J Biogeogr*. 2018; 45: 1994–2002. <https://doi.org/10.1111/jbi.13402>
70. Allouche O, Steinitz O, Rotem D, Rosenfeld A, Kadmon R. Incorporating distance constraints into species distribution models. *J Appl Ecol*. 2008; 45: 599–609. <https://doi.org/10.1111/j.1365-2664.2007.01445.x>
71. De Marco P, Nóbrega CC. Evaluating collinearity effects on species distribution models: An approach based on virtual species simulation. *PLoS One*. 2018; 13: 020240. <https://doi.org/10.1371/journal.pone.0202403> PMID: 30204749
72. Davis JC. *Statistics and Data Analysis in Geology*, 2nd edn. John Wiley and Sons, New York, NY, 1986
73. Nemésio A, Silva DP, Nabout JC, Varela S. Effects of climate change and habitat loss on a forest-dependent bee species in a tropical fragmented landscape. *Insect Conserv Divers*. 2016; 9: 149–160. <https://doi.org/10.1111/icad.12154>
74. Guisan A, Theurillat JP. Equilibrium modeling of alpine plant distribution: How far can we go? *Phytocoenologia*. 2000; 30: 353–384. <https://doi.org/10.1127/phyto/30/2000/353>
75. Wisz MS, Hijmans RJ, Li J, Peterson AT, Graham CH, Guisan A, et al. Effects of sample size on the performance of species distribution models. *Divers Distrib*. 2008; 14: 763–773. <https://doi.org/10.1111/j.1472-4642.2008.00482.x>
76. Distler T, Schuetz JG, Velásquez-Tibatá J, Langham GM. Stacked species distribution models and macroecological models provide congruent projections of avian species richness under climate change. *J Biogeogr*. 2015; 42: 976–988. <https://doi.org/10.1111/jbi.12479>
77. ICMBio. *Aplicação de Critérios e Categorias da UICN na Avaliação da Fauna Brasileira*. Version 2.0. Brasília, DF—Ministério do Meio Ambiente. 2013.
78. Bland LM, Keith DA, Miller RM, Murray NJ, Rodríguez J.P. (eds.). *Guidelines for the application of IUCN Red List of Ecosystems Categories and Criteria*, Version 1.0. Gland, Switzerland: IUCN. 2016. ix + 94pp.
79. Powers RP, Jetz W. Global habitat loss and extinction risk of terrestrial vertebrates under future land-use-change scenarios. *Nat Clim Chang*. 2019; 9:323–9. <https://doi.org/10.1038/s41558-019-0406-z>
80. Hanski I. *Habitat Loss, the Dynamics of Biodiversity, and a Perspective on Conservation*. *Ambio*. 2011; 40: 248–255. <https://doi.org/10.1007/s13280-011-0147-3> PMID: 21644453
81. Keil P, Storch D, Jetz W. On the decline of biodiversity due to area loss. *Nat Commun*. 2015; 6: 1–11. <https://doi.org/10.1038/ncomms9837> PMID: 26575347



82. Jetz W, Wilcove DS, Dobson AP. Projected impacts of climate and land-use change on the global diversity of birds. *PLoS Biol.* 2007; 5: 1211–1219. <https://doi.org/10.1371/journal.pbio.0050157> PMID: 17550306
83. Anciães M, Peterson AT. Climate change effects on Neotropical manakin diversity based on ecological niche modeling. *Condor.* 2006; 108: 778–791. <https://doi.org/10.1093/condor/108.4.778>
84. Dillion ME, Wang G, Huey RB. Global metabolic impacts of recent climate warming. *Nature.* 2010; 467:704–706. <https://doi.org/10.1038/nature09407> PMID: 20930843
85. Tewksbury JJ, Huey RB, Deutsch CA. Putting the Heat on Tropical Animals. *Science.* 2008; 320: 1296–1297. <https://doi.org/10.1126/science.1159328> PMID: 18535231
86. Schloss CA, Nunez TA, Lawler JJ. Dispersal will limit ability of mammals to track climate change in the Western Hemisphere. *Proc Natl Acad Sci.* 2012; 109: 8606–8611. <https://doi.org/10.1073/pnas.1116791109> PMID: 22586104
87. Regolin AL, Cherem JJ, Graipel ME, Bogoni JA, Ribeiro JW, Vancine MH, et al. Forest cover influences occurrence of mammalian carnivores within Brazilian Atlantic Forest. *J Mammal.* 2017; 98: 1721–1731. <https://doi.org/10.1093/jmammal/gyx103>
88. Mech SG, Hallett JG. Evaluating the effectiveness of corridors: a genetic approach. *Conservation Biology.* 2001; 15:467–474.
89. Şekerciöğlü ÇH, Daily GC, Ehrlich PR. Ecosystem consequences of bird declines. *Proc Natl Acad Sci U S A.* 2004; 101: 18042–18047. <https://doi.org/10.1073/pnas.0408049101> PMID: 15601765
90. Caves EM, Jennings SB, HilleRisLambers J, Tewksbury JJ, Rogers HS. Natural Experiment Demonstrates That Bird Loss Leads to Cessation of Dispersal of Native Seeds from Intact to Degraded Forests. Farwig N, editor. *PLoS One.* 2013; 8: e65618. <https://doi.org/10.1371/journal.pone.0065618> PMID: 23741503
91. Hilty S, Kirwan GM. Opal-rumped Tanager (*Tangara velia*). In: del Hoyo, J., Elliott, A., Sargatal, J., Christie, D.A. & de Juana, E. (eds.). *Handbook of the Birds of the World Alive*. Lynx Edicions, Barcelona. 2020. Available in: <https://www.hbw.com/node/61721>.
92. del Hoyo, J, Collar N, Christie DA, Sharpe CJ, Kirwan GM. Belem Curassow (*Crax pinima*). In: del Hoyo, J., Elliott, A., Sargatal, J., Christie, D.A. & de Juana, E. (eds.). *Handbook of the Birds of the World Alive*. Lynx Edicions, Barcelona. 2020. Available in: <https://www.hbw.com/node/467090>.
93. Short LL, Kirwan GM, Sharpe CJ. Eastern Red-necked Araçari (*Pteroglossus bitorquatus*). In: del Hoyo, J., Elliott, A., Sargatal, J., Christie, D.A. & de Juana, E. (eds.). *Handbook of the Birds of the World Alive*. Lynx Edicions, Barcelona. 2020. Available in: <https://www.hbw.com/node/56089>.
94. Newton I. Population limitation in birds: the last 100 years. *British Birds.* 1998 Available in: [http://www.globalraptors.org/grin/researchers/uploads/302/pop\\_limitation.pdf](http://www.globalraptors.org/grin/researchers/uploads/302/pop_limitation.pdf).
95. Crick HQP. The impact of climate change on birds. *Ibis (Lond 1859).* 2004; 146: 48–56. <https://doi.org/10.1111/j.1474-919X.2004.00327.x>
96. Boleli IC, de Queiroz SA. Effects of incubation temperature and relative humidity on embryonic development in eggs of red-winged tinamou (*Rhynchotus rufescens*). *Int J Poult Sci.* 2012; 11: 517–523. <https://doi.org/10.3923/ijps.2012.517.523>
97. Sekercioglu CH, Scheneider SH, Fay JP, Loarie SR. Climate change, Elevation Range Shifts, and Birds Extinctions. *Conservation Biology.* 2008; 22:140–150. <https://doi.org/10.1111/j.1523-1739.2007.00852.x> PMID: 18254859
98. Rodrigues ASL, Akçakaya HR, Andelman SJ, Bakkar MI, Boitani L, Yan X. Global gap analysis: priority regions for expanding the global protected-area network. *BioScience.* 2004; 54:1092–1100.
99. Campedelli T, Florenzano GT, Londi G, Cutini S, Fornasari L. Effectiveness of the Italian national protected areas system in conservation of farmland birds: a gap analysis. *Ardeola.* 2010; 57:51–64.
100. Carvalho DL, Sousa-Neves T, Cerqueira PV, Gonsioroski G, Silva SM, Silva DP, et al. Delimiting priority areas for the conservation of endemic and threatened Neotropical birds using a niche-based gap analysis. Umaphy G, editor. *PLoS One.* 2017; 12: e0171838. <https://doi.org/10.1371/journal.pone.0171838> PMID: 28187182
101. Instituto Nacional De Pesquisas Espaciais. Monitoramento da cobertura florestal da Amazônia por satélites—sistemas Prodes, Deter, Degrad e Queimadas. São José do Campos. INPE. 2017. Available from: <http://www.inpe.gov.br>.
102. Martins MB; Oliveira TG. Amazônia maranhense: diversidade e conservação. Belém: MPEG, 2011.
103. Lima DM, Martínez C, Raíces DSL. An avifaunal inventory and conservation prospects for the Gurupi biological reserve, Maranhão, Brazil. *Rev Bras Ornitol.* 2014; 22: 317–340. <https://doi.org/10.1007/bf03544270>

104. Alteff EF, Gonsioroski G, Barreiros M, Torres LGC de O, Camilo AR, Mozerle HB, et al. The rarest of the rare: Rediscovery and status of the critically endangered belem curassow, *crax fasciolata pinima* (pelzelin, 1870). *Pap Avulsos Zool.* 2019; 59: 0–4. <https://doi.org/10.11606/1807-0205/2019.59.46>
105. Schwitzer C, Mittermeier RA, Rylands AB, Chiozza F, Williamson EA, Wallis J, et al. *Primates in Peril: The World's 25 Most Endangered Primates 2014–2016*. IUCN SSC Primate Specialist Group (PSG), International Primatological Society (IPS), Conservation International (CI), and Bristol Zoological Society, Arlington, VA. 2015.
106. MMA. Ministério do Meio Ambiente. Portaria 444/2014. *Diário Oficial da União* 245 –Seção 1: 121–126, 2014.
107. Moura WC, Fukuda JC, Lisboa EA, Gomes BN, Oliveira SL, et al. *A Reserva Biológica do Gurupi como instrumento de conservação da natureza na Amazônia Oriental*. Belém. MPEG, 2011; 24–31.
108. Soares-Filho B, Rajao R, Macedo M, Carneiro A, Costa W, Coe M, et al. Cracking Brazil's Forest Code. *Science.* 2014; 344: 363–364. <https://doi.org/10.1126/science.1246663> PMID: 24763575
109. Cooke B, Langford WT, Gordon A, Bekessy S. Social context and the role of collaborative policy making for private land conservation. *J Environ Plan Manag.* 2012; 55: 469–485. <https://doi.org/10.1080/09640568.2011.608549>
110. Debby FM, Dick K. Conservation Approaches to Protecting Critical Habitats and Species on Private Property. *Natural Areas Journal.* 2012; 32:190–198. <https://doi.org/10.3375/043.032.0208>
111. Pérez-Hernández CG, Vergara PM, Saura S, Hernandez J. Do corridors promote connectivity for bird-dispersed trees? The case of *Persea lingue* in Chilean fragmented landscapes. *Springer.* 2014; 30:77–90. <https://doi.org/10.1007/s10980-014-0111-2>
112. Young CEF, Queiroz JM, Backer B de. Instrumentos econômicos para a conservação: um estudo de caso do ICMS ecológico e carbono evitado para RPPNS na Caatinga. 2012. Available from: [http://www.ie.ufrj.br/images/gema/Gema\\_Artigos/2012/Young\\_Queiroz\\_Bakker\\_2012\\_Fortaleza\\_BNB\\_Caatinga.pdf](http://www.ie.ufrj.br/images/gema/Gema_Artigos/2012/Young_Queiroz_Bakker_2012_Fortaleza_BNB_Caatinga.pdf).
113. Lindenmayer DB, Fischer J. Tackling the habitat fragmentation pantheon. *Trends Ecol Evol.* 2007; 22: 127–132. <https://doi.org/10.1016/j.tree.2006.11.006> PMID: 17145095
114. Lima PCA de, Franco JL de A. As RPPNs Como Estratégia Para a Conservação da Biodiversidade: O caso da Chapada dos Veadeiros. *Soc Nat.* 2014; 26: 113–125. <https://doi.org/10.1590/1982-451320140108>
115. Soares-Filho B, Moutinho P, Nepstad D, Anderson A, Rodrigues H, Garcia R, et al. Role of Brazilian Amazon protected areas in climate change mitigation. *Proc Natl Acad Sci.* 2010; 107: 10821–10826. <https://doi.org/10.1073/pnas.0913048107> PMID: 20505122
116. Françoso RD, Brandão R, Nogueira CC, Salmons YB, Machado RB, Colli GR. Habitat loss and the effectiveness of protected areas in the Cerrado Biodiversity Hotspot. *Nat e Conserv.* 2015; 13: 35–40. <https://doi.org/10.1016/j.ncon.2015.04.001>
117. Paiva RJO, Brites RS, Machado RB. The Role of Protected Areas in the Avoidance of Anthropogenic Conversion in a High Pressure Region: A Matching Method Analysis in the Core Region of the Brazilian Cerrado. Chapman M (Gee) G, editor. *PLoS One.* 2015; 10: e0132582. <https://doi.org/10.1371/journal.pone.0132582> PMID: 26222140