

G-protein coupled receptor 88 knockdown in the associative striatum reduces psychiatric symptoms in a translational male rat model of Parkinson disease

Benjamin Galet, PhD; Manuela Ingallinesi, PhD; Jonathan Pegon, MSc; Anh Do Thi, PhD; Philippe Ravassard, PhD; Nicole Faucon Biguet, PhD; Rolando Meloni, MD

Background: In addition to motor disability, another characteristic feature of Parkinson disease is the early appearance of psychiatric symptoms, including apathy, depression, anxiety and cognitive deficits; treatments for these symptoms are limited by the development of adverse effects such as impulse-control disorders. In this context, we investigated the orphan G protein-coupled receptor 88 (GPR88) as a novel therapeutic target. **Methods:** We used lentiviral-mediated expression of specifically designed microRNA to knock down *Gpr88* in a translational male rat model of early Parkinson disease obtained by dopamine loss in the dorsolateral striatum as a result of 6-hydroxydopamine lesions. We evaluated the impact of *Gpr88* knockdown on the Parkinson disease model using behavioural, immunohistochemical and in situ hybridization studies. **Results:** Knockdown of *Gpr88* in associative territories of the dorsal striatum efficiently reduced alterations in mood, motivation and cognition through modulation of the regulator of the G-protein signalling 4 and of the truncated splice variant of the FosB transcription factor. Knockdown of *Gpr88* also reduced allostatic changes in striatal activity markers that may be related to patterns observed in patients and that provide support for an “overload” hypothesis for the etiology of the psychiatric symptoms of Parkinson disease. **Limitations:** Behavioural tests assessing specific cognitive and motivational parameters are needed to further characterize the effects of the lesion and of *Gpr88* knockdown in early-stage and advanced Parkinson disease models, presenting more extensive dopamine loss. Additional studies focusing on the direct and indirect striatal output pathways are also required, because little is known about the signalling pathways regulated by GPR88 in different striatal cell types. **Conclusion:** GPR88 may constitute a highly relevant target for the treatment of the psychiatric symptoms of Parkinson disease.

Introduction

Parkinson disease is classically defined as a motor disorder related to the neurodegenerative loss of dopamine innervation of the striatum, but it also involves psychiatric symptoms that represent a major burden for patients' quality of life.¹ Many of these symptoms have been grouped as part of a “hypodopaminergic” syndrome, which includes apathy, depression, anxiety and cognitive impairment and affects up to 85% of patients with Parkinson disease.^{2,3} Apathy in particular, defined as a decrease in motivational drive, has emerged as a core symptom of Parkinson disease and is often associated with cognitive impairment.⁴

A remarkable feature of these symptoms is that, because of the progressive nature of the neurodegeneration, they frequently emerge years before the onset of motor impairments, which appear when striatal dopamine loss exceeds 60% to 70%.^{5,6} Thus, at the time of diagnosis, which is elicited by the

appearance of motor symptoms, 37% of patients already have depression, 27% have apathy, 17% have anxiety and 20% to 40% have cognitive dysfunction,⁶ redefining Parkinson disease as a quintessential neuropsychiatric disorder.⁷

Dopaminergic medications can efficiently treat some of these aspects of Parkinson disease,^{3,4} but their effect is based on nonphysiologic pulsatile dopaminergic stimulation (similar to the effect of L-DOPA substitutive therapy for motor symptoms) and is thus hindered by the frequent development of “hyperdopaminergic” symptoms such as impulse-control disorders.² Furthermore, existing treatments for cognitive impairment have variable efficacy and limiting adverse effects.⁸ There is thus an unmet medical need for new treatments to manage these symptoms.

In this context, orphan G protein-coupled receptor 88 (GPR88) is emerging as a particularly suitable target. The *GPR88* gene has been associated with bipolar disorder and schizophrenia,⁹ as well as with learning deficits and chorea.¹⁰

Correspondence to: R. Meloni, Laboratory of Gene Regulation and Adaptive Behaviors (GRAB), Neurosciences Paris Seine, Sorbonne Université, 7 Quai Saint Bernard 75005, Paris France; rolando.meloni@upmc.fr

Submitted Oct. 17, 2019; Revised Feb. 3, 2020; Accepted Mar. 3, 2020; Early-released July 15, 2020

DOI: 10.1503/jpn.190171

It is expressed mainly in the corticostriatal synapse of striatal medium spiny neurons,¹¹ where it exerts an inhibitory activity through Gi/o coupling.^{12,13} Indeed, *Gpr88* knockout (KO) mice are hypersensitive to dopamine receptor type 2 agonists and display impaired affective, goal-directed, cognitive and sensorimotor behaviours.^{12,14,15} We have also reported that *Gpr88* knockdown (*Gpr88*-KD) reduces behavioural alterations in a rat model of schizophrenia.¹⁶ As well, we have more recently shown that *Gpr88*-KD decreases locomotor alterations in a rat model of Parkinson disease motor symptoms.¹⁷ Therefore, because GPR88 exerts inhibitory control over key neurotransmitter systems that are altered in Parkinson disease, we further hypothesized that inhibiting GPR88 in the striatum could have an effect on the psychiatric symptoms of Parkinson disease.

To evaluate GPR88 as a therapeutic target for the psychiatric symptoms of Parkinson disease, we first developed a translational model of early Parkinson disease in rats by reproducing the loss of dopamine that is observed in the first stages of the disease, specifically affecting sensorimotor territories of the striatum,¹⁸ using stereotaxic injections of the 6-hydroxydopamine (6-OHDA) toxin. We then implemented *Gpr88*-KD in the dorsolateral sensorimotor or dorsomedial associative areas of the striatum (the latter being associated with psychiatric symptoms in Parkinson disease¹⁹) and evaluated effects at the behavioural and molecular levels.

Methods

The study design is shown in Figure 1; details are provided in Appendix 1, available at jpn.ca/190171-a1.

Animals

Animal studies were authorized by an ethical committee (APAFIS reference #3669–2016011817516297) and conducted in the in-house specific pathogen-free animal facility (agreement reference B75–13–19). Male Sprague–Dawley rats weighing 300 g at the beginning of experimentation were housed in standard conditions and handled throughout the study in compliance with the European Union 2010 animal welfare act, and the 2010/63 French directive. Procedures were reported following the Animal Research: Reporting of In Vivo Experiments (ARRIVE) guidelines.²⁰

Stereotaxic injections of 6-OHDA

Intrastriatal stereotaxic injections were performed bilaterally with 4 µL of a solution of 6-OHDA (3 µg/µL, 12 µg total per hemisphere) in saline + 0.02% ascorbic acid (all chemicals from Sigma) or with a control solution (saline + 0.02% ascorbic acid only).

Lentivirus production

The lentiviral vectors coexpressing specifically designed microRNA (miR) and emerald green fluorescent protein were generated at the in-house iVector platform, using the BLOCK-

iT Pol II miR RNAi expression vector kit (Invitrogen) and injected 2 weeks after the 6-OHDA lesions were introduced.

Behavioural tests

The rats were tested for general motor and exploratory behaviour using an actimeter, for anhedonia using the sucrose preference test, for social interaction and selective attention using the social novelty discrimination task, for sensorimotor gating using the prepulse inhibition test, and for depression-associated behaviour using the forced swim test.

Immunolabelling and in situ hybridization

After the end of the behavioural procedures (2 to 4 days later), the rats were anesthetized in an isoflurane chamber and decapitated. Their brains were rapidly removed and snap-frozen for 90 seconds in isopentane at -55°C (Carlo Erba Reagents). Coronal cryosections (12 µm) of the striatum were used to control for the presence and extent of emerald green fluorescent protein signal in the targeted areas. The slices were then post-fixed in 4% paraformaldehyde for 30 minutes at 4°C to perform immunolabelling and in situ hybridization experiments.

Statistical analysis

Data from the experiments were analyzed using Prism 6.0 (GraphPad Software Inc.) and implementing different tests as detailed in Appendix 1.

Results

6-OHDA stereotaxic injections induce dopaminergic denervation

The 6-OHDA injections in the dorsolateral striatum (DLS) reproduced the partial loss of dopaminergic projections to sensorimotor territories of the striatum (posterior putamen) observed in early Parkinson disease²¹ by inducing a 48% mean reduction of tyrosine hydroxylase immunoreactivity over at least 1 mm on the anterior–posterior axis ($t_{16} = 9.28$, $p < 0.001$; multiple t tests followed by Holm–Sidak corrections; Fig. 2A and B). The neighbouring associative dorsomedial striatum (DMS) and limbic ventral striatum (VS) were not significantly affected by the lesion (DMS $t_{16} = 1.82$, $p = 0.09$; VS $t_{15} = 0.43$, $p = 0.67$; Fig. 2B).

Lentivirus-mediated knockdown efficiently reduced Gpr88 expression

The injections at multiple sites in the DLS or DMS of lentiviral vectors containing a control miR (miR-neg) or an miR directed against *Gpr88* (miR-*Gpr88*) resulted in the transduction of the corresponding regions without spreading to the adjacent areas (Fig. 2C and D). Two-way analysis of variance (ANOVA) showed significant effects of *Gpr88*-KD ($F_{2,52} = 28$, $p < 0.001$), the striatal region ($F_{1,52} = 10$, $p = 0.002$) and a *Gpr88*-KD × striatal region interaction ($F_{2,52} = 72$, $p < 0.001$)

on *Gpr88* expression. The region-specific effect of *Gpr88*-KD was confirmed using Tukey post hoc multiple comparison tests ($p < 0.001$ in the DLS and DMS; Fig. 2E and F).

Partial dopaminergic depletion of the DLS reproduced psychiatric symptoms without inducing motor deficits

Motor behaviour was assessed at 2 and 4 weeks after 6-OHDA injections by measuring horizontal movements in the actimeter. This parameter was unaffected by dopamine loss at both time points (Fig. 3A; Appendix 1, Fig. S2A), as expected with a restricted lesion.²³ However, although stereotyped behaviour in the actimeter test was also preserved at both time points, 2-way ANOVA revealed a significant interaction of treatment \times time on the number of rearings ($F_{2,44} = 4.66$, $p = 0.015$; Fig. 3A); these were significantly reduced by the lesion at the 15-minute time point (Sidak multiple comparison test, $p = 0.013$), indicating a decrease in novelty exploration behaviour, previously characterized in similar models of partial dopamine loss in the DLS.^{24,25}

Sensorimotor gating is altered in many basal ganglia disorders, including Parkinson disease, and has been linked to cognitive dysfunction in patients with Parkinson disease.²⁶ We assessed this parameter using the prepulse inhibition test. Although the partial lesion of the DLS increased the startle reaction in response to a loud auditory stimulus (110 dB; $t_{10,21} = 2.396$, $p = 0.037$, Welch t test; Fig. 3B, left panel), the level of sensorimotor gating (% prepulse inhibition) was preserved at all levels of prepulse intensity used (Fig. 3B, right panel), suggesting the presence of efficient compensatory mechanisms.

Affective parameters relating to anhedonia and depression (both frequently reported in Parkinson disease)³ were assessed using the sucrose preference and the forced swim tests, respectively. Sucrose preference and general consummatory behaviour, measured by daily food and water intake, were not affected by the 6-OHDA lesion (Fig. 3C; Appendix 1, Fig. S2B). However, the lesion did decrease the latency to immobility and increased immobility count in the forced swim test (latency $t_{21,34} = 3.94$, $p < 0.001$; immobility count $t_{22,85} = 4.36$, $p < 0.001$; Welch t tests; Fig. 3D), representative of a despair-like behaviour associated with depression.²⁷

Finally, we used the social novelty discrimination task to evaluate deficits in motivation and selective attention (a core feature of Parkinson disease executive dysfunction).⁸ The loss of dopamine in the DLS decreased social interaction time during the first presentation phase (P1; $t_{22,72} = 2.95$, $p = 0.007$, Welch t test; Fig. 3E), an ecological indicator of apathy.²⁸ Further analyses then revealed a significant treatment \times novelty status interaction in the discrimination phase of the test (P2; 2-way ANOVA: $F_{1,48} = 8.995$, $p = 0.004$); the lesioned animals failed to preferentially direct their attention to the novel juvenile, which resulted in a decreased discrimination ratio ($t_{22,51} = 4.29$, $p < 0.001$, Welch t test; Fig. 3E), an effect that was not due to a reduced level of interaction during the discrimination task (Appendix 1, Figure S2C).

Gpr88-KD in the DMS reversed behavioural deficits

Although 2-way ANOVA revealed no significant main effects of treatment or treatment \times time interaction on the motor parameters measured by the actimeter, *Gpr88*-KD in the DMS

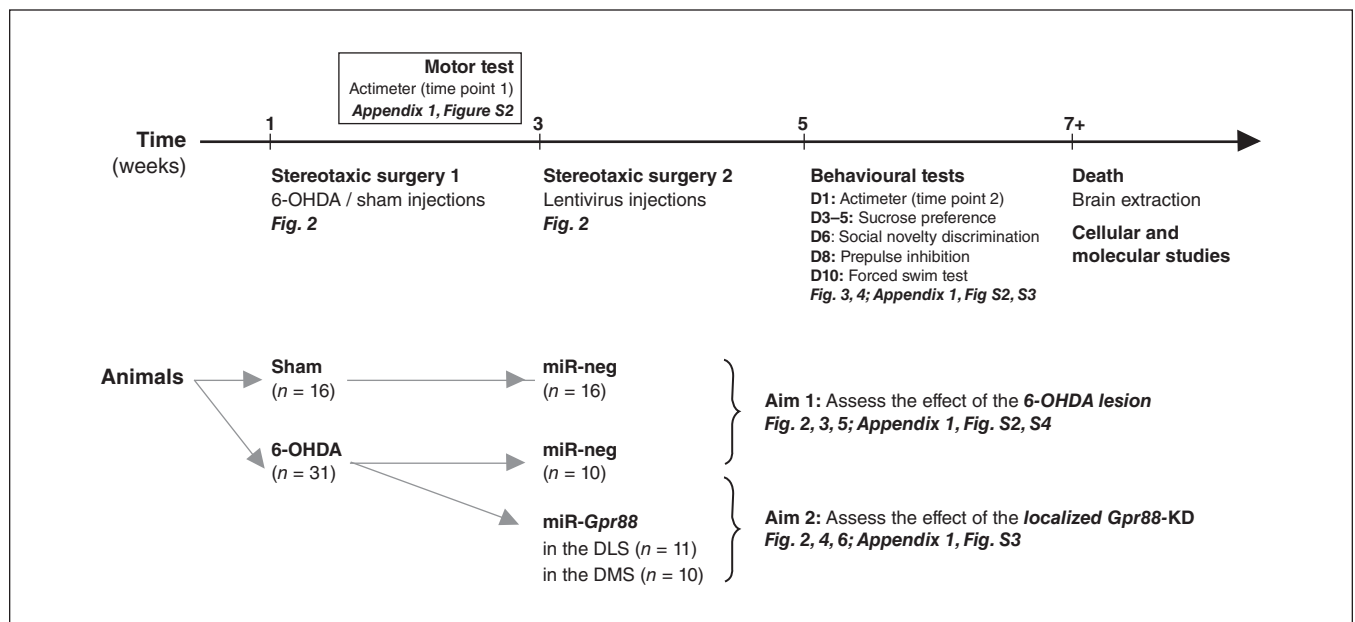


Fig. 1: Experimental design and timeline. The time sequence of the different experimental procedures and tests is outlined in the upper section. The experimental groups (number of rats in parentheses) and the specific aims of the study are presented in the lower section. 6-OHDA = 6-hydroxydopamine; DLS = dorsolateral striatum; DMS = dorsomedial striatum; miR = micro RNA; miR-*Gpr88* = micro RNA against *Gpr88*; miR-neg = micro RNA negative.

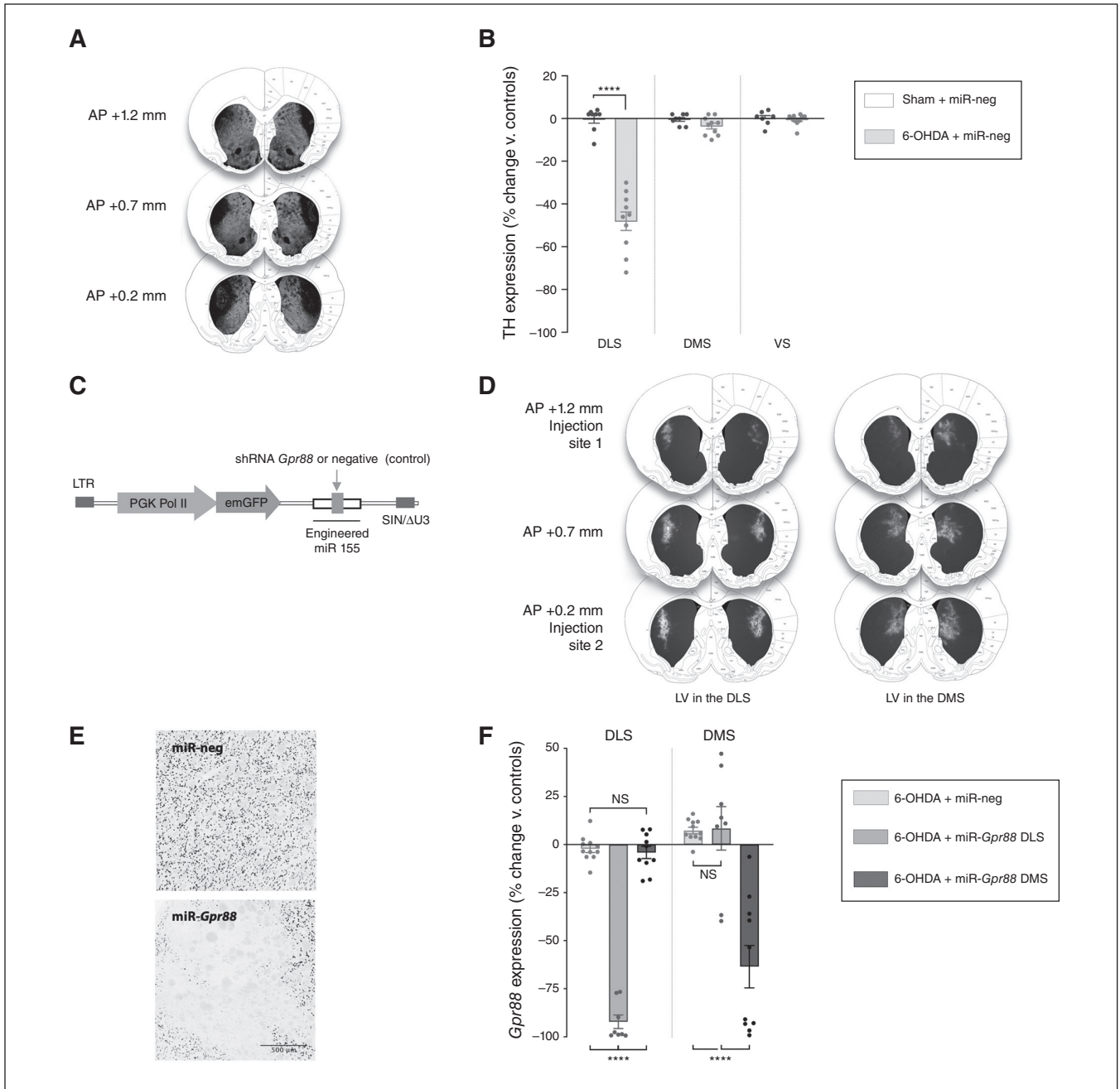


Fig. 2: Stereotaxic injections induce a restricted loss of nigrostriatal dopaminergic projections and an efficient knockdown of *Gpr88* expression in discrete striatal areas. (A) Representative images of 6-OHDA-lesioned striata. Coronal sections stained for TH by immunofluorescence (+1.2 to +0.2 mm anterior to the bregma), superimposed on the Paxinos and Watson rat brain atlas for anatomic reference.²² (B) Quantification of the extent of TH signal loss in the DLS, DMS and VS ($n_{\text{sham} + \text{miR-neg}} = 7-8$; $n_{\text{6-OHDA} + \text{miR-neg}} = 10$). (C) Schematic representation of the lentiviral construct used to transduce the targeted striatal regions. (D) Representative images of DLS or DMS transduced striata. The lentiviruses were injected at 2 coordinates anterior to the bregma: +1.2 and +0.2 mm. The photographs were then superimposed on the Paxinos and Watson rat brain atlas for anatomic reference.²² (E) ISH showing the suppression of *Gpr88* expression induced by miR-*Gpr88*, but not miR-neg. (F) Quantification of the ISH signal for *Gpr88* mRNA following miR-neg or miR-*Gpr88* injections in the DLS or DMS ($n_{\text{sham} + \text{miR-neg}} = 12$; $n_{\text{6-OHDA} + \text{miR-neg}} = 8-10$; $n_{\text{6-OHDA} + \text{miR-Gpr88}} = 8-10$). The values in B and F were normalized to those of the control group (sham + miR-neg) and expressed as percent change. They are presented as mean \pm standard error of the mean and were analyzed using a 2-way analysis of variance followed by Tukey multiple comparison tests. **** $p < 0.0001$. 6-OHDA = 6-hydroxydopamine; AP = anteroposterior; DLS = dorsolateral striatum; DMS = dorsomedial striatum; emGFP = emerald green fluorescent protein; ISH = in situ hybridization; LTR = long terminal repeat; LV = lentivirus; miR = micro RNA; miR-*Gpr88* = micro RNA against *Gpr88*; miR-neg = micro RNA negative; NS = not significant; PGK Pol II = phosphoglycerate kinase polymerase II promoter; shRNA = short hairpin RNA; SIN/ΔU3 = self-inactivating deletion in the 3' long terminal repeat; TH = tyrosine hydroxylase; VS = ventral striatum.

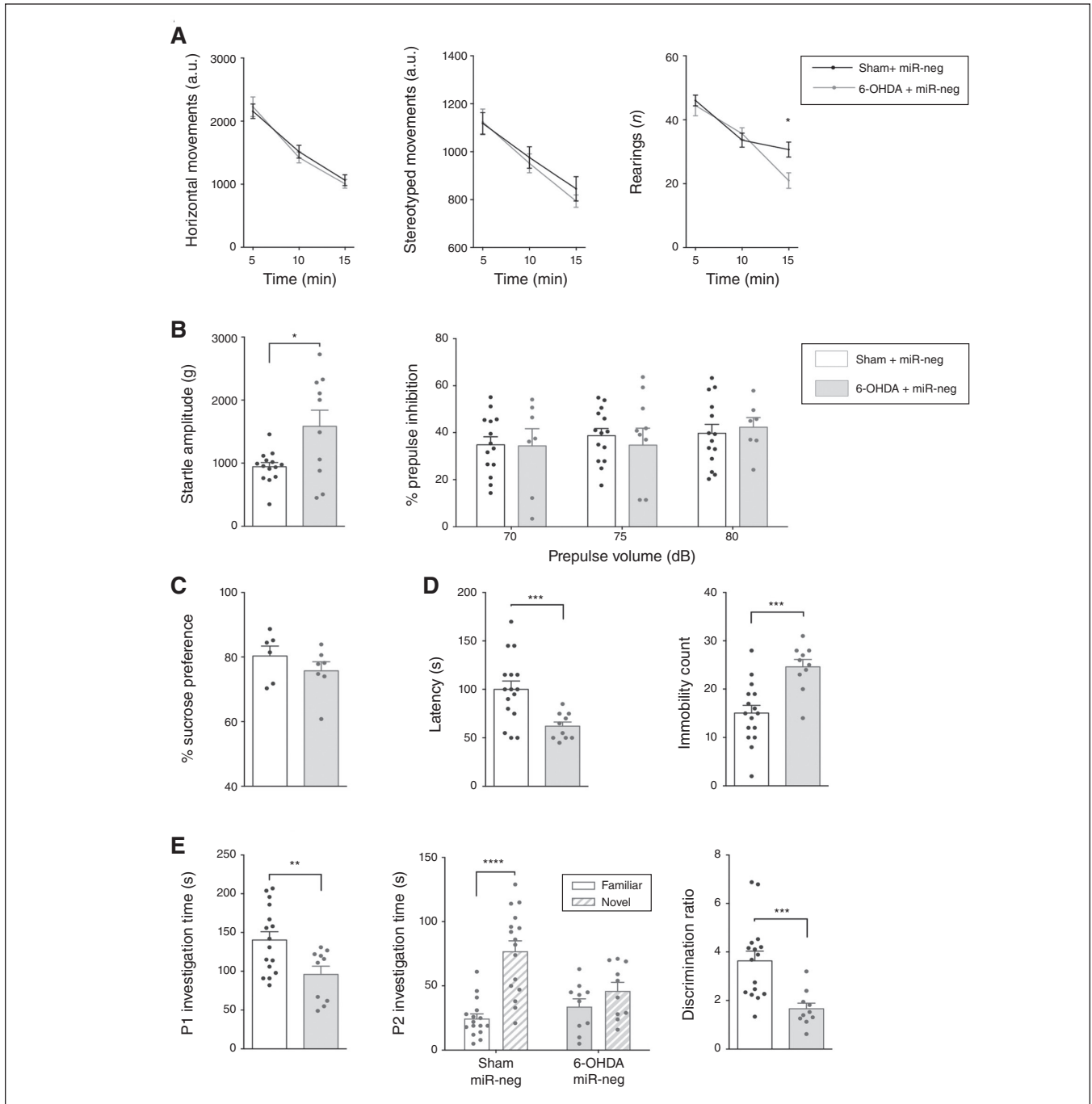


Fig. 3: Dopamine loss in the dorsolateral striatum reproduces psychiatric symptoms of Parkinson disease. (A) Horizontal, stereotyped and rearing behaviours measured during 3 consecutive 5-minute segments with the actimeter test 4 weeks after the 6-OHDA lesion ($n_{\text{sham} + \text{miR-neg}} = 14$; $n_{\text{6-OHDA} + \text{miR-neg}} = 10$). (B) Effects of the 6-OHDA lesion on the startle amplitude in response to a loud stimulus (110 dB) and on percent of prepulse inhibition at all tested prepulse intensities (70, 75 and 80 dB; $n_{\text{sham} + \text{miR-neg}} = 14$; $n_{\text{6-OHDA} + \text{miR-neg}} = 7-10$). (C) The 6-OHDA lesions did not alter the percent preference for the sucrose solution ($n_{\text{sham} + \text{miR-neg}} = 6$; $n_{\text{6-OHDA} + \text{miR-neg}} = 7$). (D) The 6-OHDA lesions did induce depressive-like behaviour in the forced swim test, as suggested by decreased latency (in seconds) and increased immobility count ($n_{\text{sham} + \text{miR-neg}} = 16$; $n_{\text{6-OHDA} + \text{miR-neg}} = 10$). (E) The 6-OHDA lesions also decreased P1 investigation time (in seconds) in the social novelty discrimination task, abolished preference for the novel juvenile and decreased the discrimination ratio ($n_{\text{sham} + \text{miR-neg}} = 16$; $n_{\text{6-OHDA} + \text{miR-neg}} = 10$). Data are presented as mean \pm standard error of the mean. When comparing 2 groups, we performed 2-tailed Welch *t* tests. In cases of interactions with additional factors, we used 2-way analyses of variance, followed by a Sidak multiple comparison test (actimeter data, percent prepulse inhibition and P2 investigation time). * $p < 0.05$; ** $p < 0.01$; *** $p < 0.001$; **** $p < 0.0001$. 6-OHDA = 6-hydroxydopamine; a.u. = arbitrary units; miR = micro RNA; miR-neg = micro RNA negative; P1 = first presentation; P2 = second presentation.

reversed the deficit in rearing behaviour at the 15-minute time point ($p = 0.020$, Dunnett post hoc multiple comparison test; Fig. 4A). It also increased sensorimotor gating without affecting startle amplitude (2-way ANOVA, effect of treatment on % prepulse inhibition, $F_{2,78} = 9.79$, $p < 0.001$; Dunnett post hoc test miR-Gpr88-DMS v. miR-neg, 70 dB $p = 0.010$ and 75 dB $p = 0.025$; Fig. 4B).

Furthermore, whereas Gpr88-KD in either area had no effect on sucrose preference (Fig. 4C), inactivation in the DMS had an antidepressant-like effect in the forced swim test: it increased latency (effect of treatment $F_{2,28} = 6.883$, $p = 0.004$; Dunnett post hoc test miR-Gpr88-DMS v. miR-neg $p = 0.003$) and reduced immobility count (effect of treatment $F_{2,28} = 3.736$, $p = 0.037$; Dunnett post hoc test miR-Gpr88-DMS v. miR-neg $p = 0.021$; Fig. 4D). This reduction was specifically mediated by an increase in swimming behaviour (effect of treatment $F_{2,28} = 3.524$, $p = 0.043$; Dunnett post hoc test miR-Gpr88-DMS v. miR-neg $p = 0.028$; Appendix 1, Fig. S3A). We observed no effect on consummatory behaviour (Appendix 1, Fig. S3B).

In the DMS, Gpr88-KD also had a promotivational effect, as it increased the duration of social interaction (effect of treatment $F_{2,28} = 3.938$, $p = 0.031$; Dunnett post hoc test miR-Gpr88-DMS v. miR-neg $p = 0.019$; Fig. 4E). Finally, Gpr88-KD increased preferential interaction with the novel juvenile in the social novelty discrimination task (2-way ANOVA, treatment \times novelty status interaction $F_{2,56} = 3.162$, $p = 0.05$) in both the DLS and DMS ($p = 0.004$ and $p < 0.001$, respectively; Sidak multiple comparison test; Fig. 4E). However, only the effect in the DMS was large enough to restore the discrimination ratio (effect of treatment $F_{2,28} = 7.998$, $p = 0.002$; Dunnett post hoc test miR-Gpr88-DMS v. miR-neg $p = 0.001$; Fig. 4E). However, this proattentive effect was not associated with an increase in total interaction time during the discrimination task (Appendix 1, Fig. S3C). It is worth noting that although significant effects of Gpr88-KD were observed mainly when targeting the DMS, inactivation in the DLS often also tended to reduce behavioural alterations.

Dopamine loss in the DLS induces molecular alterations in the adjacent DMS

The dopamine striatal loss in Parkinson disease or after a 6-OHDA lesion dysregulates the balanced activity of the 2 types of projecting medium spiny neurons — the direct stimulatory striatonigral (dMSN) and the indirect inhibitory striatopallidal (iMSN) pathways — inducing the symptoms of Parkinson disease.²⁹ Alterations in these pathways are associated with the downregulation of prodynorphin (*Pdyn*) in the dMSN and the upregulation of proenkephalin (*Penk*) in the iMSN, as well as a net increase in striatal glutamic acid decarboxylase 67 (*Gad67*) expression.³⁰ Therefore, we evaluated the expression levels of *Pdyn* and *Penk*, which reflect dMSN and iMSN activity, respectively,³¹ and *Gad67*, which is considered a proxy for global levels of transmission of γ -aminobutyric acid in the striatum.³² Strikingly, although the loss of dopamine was strictly limited to the DLS, we also observed significant alterations in the expression of these

markers in the adjacent, intact DMS. Indeed, although the lesion decreased expression levels of *Pdyn* and increased those of *Penk* in the DLS as expected (*Pdyn* $t_{21} = 5.551$, $p < 0.001$; *Penk* $t_{21} = 5.035$, $p < 0.001$; multiple t tests followed by Holm–Sidak corrections, here and throughout the next sections; Fig. 5A), expression of both markers was upregulated in the unlesioned DMS (*Pdyn* $t_{21} = 2.522$, $p = 0.020$; *Penk* $t_{21} = 2.709$, $p = 0.013$; Fig. 5A), suggesting a local hyperactivity of dMSN and iMSN. Furthermore, *Gad67* expression was also significantly upregulated throughout the dorsal striatum (DLS $t_{21} = 4.095$, $p < 0.001$; DMS $t_{21} = 2.967$, $p = 0.007$; Fig. 5A).

The regulator of G protein signalling 4 (*Rgs4*) is highly expressed in the brain and acts as a negative regulator of synaptic signalling.³³ In 6-OHDA models of Parkinson disease, inhibition of *Rgs4* has antiparkinsonian effects: it reduces behavioural alterations by restoring long-term depression in the iMSN while reducing acetylcholine release from cholinergic interneurons.^{34,35} Moreover, the increase in the excitability of medium spiny neurons associated with Gpr88-KO is mediated by the downregulation of *Rgs4*.¹² Thus, we used *Rgs4* expression to further investigate the effects of the lesion and Gpr88-KD on intracellular signalling. The 6-OHDA lesion induced a trend toward a decrease in the expression of *Rgs4* in the DLS ($t_{22} = 1.965$, $p = 0.06$) and significantly increased expression in the DMS ($t_{22} = 2.794$, $p = 0.011$; Fig. 5A). However, Gpr88 expression remained unaffected by the loss of dopamine in either striatal area (Appendix 1, Fig. S4).

We then used the truncated splice variant of FosB (Δ FosB), a transcription factor involved in neuropsychiatric disorders including Parkinson disease,³⁶ as a final molecular readout, because its unique accumulation profile confers a long-lasting effect on the regulation of striatal gene networks.³⁷ We found that Δ FosB expression was locally increased by the loss of dopamine in the DLS ($t_{28} = 3.713$, $p = 0.002$), but it was also significantly decreased in the unlesioned DMS ($t_{28} = 3.338$, $p = 0.002$; Fig. 5B).

Inactivation of Gpr88 in the DMS reverses alterations in Rgs4 and Δ FosB expression

Although Gpr88-KD had no significant effect on *Pdyn* expression, it significantly reduced the expression level of *Penk* in the DLS ($t_{17} = 5.163$, $p < 0.001$; Fig. 6A), suggesting a reduction of iMSN hyperactivity. Also, Gpr88-KD strongly reduced the expression of *Gad67* and *Rgs4* in the DLS and DMS (DLS $t_{17} = 5.956$, $p < 0.001$ for *Gad67* and $t_{20} = 6.404$, $p < 0.001$ for *Rgs4*; DMS $t_{19} = 4.319$, $p < 0.001$ for *Gad67* and $t_{20} = 3.633$, $p = 0.002$ for *Rgs4*; Fig. 6A). Interestingly, Gpr88-KD had an opposing effect on Δ FosB expression in the DLS and DMS, in both cases reversing the 6-OHDA-induced alterations ($t_{20} = 3.982$, $p < 0.001$ and $t_{22} = 3.452$, $p = 0.002$, respectively; Fig. 6B).

Discussion

Although the acute dopamine loss in the 6-OHDA lesion model does not correspond to the progressive course of Parkinson disease, the partial bilateral striatal dopamine denervation most closely mimics the disease's early stage.³⁸

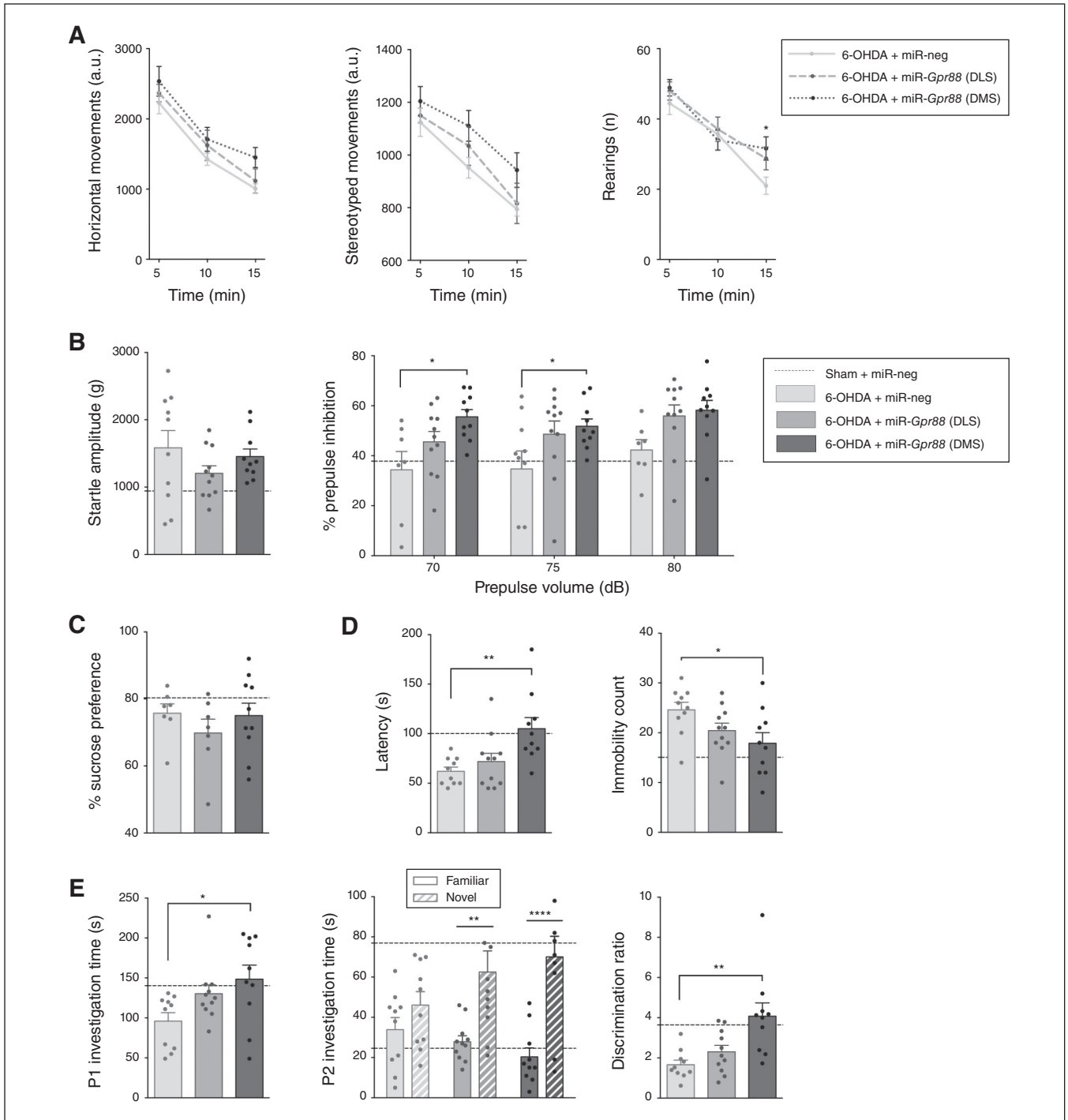


Fig. 4: *Gpr88* knockdown in the dorsomedial striatum reverses behavioural deficits. Effects of *Gpr88* knockdown on the following: (A) horizontal, stereotyped and rearing behaviours in the actimeter test; (B) startle amplitude and percent of prepulse inhibition; (C) sucrose preference; (D) latency and immobility count in the forced swim test; (E) social interaction and novelty preference; ($n_{6\text{-OHDA} + \text{miR-neg}} = 10$; $n_{6\text{-OHDA} + \text{miR-Gpr88-DLS}} = 9\text{--}11$; $n_{6\text{-OHDA} + \text{miR-Gpr88-DMS}} = 8\text{--}10$, except in the sucrose preference test, where $n = 7\text{--}10$ throughout the groups). Data are presented as mean \pm standard error of the mean. For reference, a dashed horizontal line indicates the values from the control group (Sham + miR-neg) that were presented in Figure 3. When we compared the 3 groups for 6-OHDA, we performed 1-way analyses of variance followed by a Dunnett multiple comparisons test. In cases of interactions with additional factors, we performed 2-way analyses of variance, followed by a Dunnett multiple comparisons test (actimeter data, % prepulse inhibition and P2 investigation time). * $p < 0.05$, ** $p < 0.01$, *** $p < 0.001$, **** $p < 0.0001$. 6-OHDA = 6-hydroxydopamine; a.u. = arbitrary units; DLS = dorsolateral striatum; DMS = dorsomedial striatum; miR = micro RNA; miR-neg = micro RNA negative; miR-*Gpr88* = micro RNA against *Gpr88*; P1 = first presentation; P2 = second presentation.

Accordingly, we established that the loss of dopamine restricted to the DLS was sufficient — without modifying motor behaviour — to reproduce alterations relating to depression, apathy and attentional deficits, 3 of the most prevalent psychiatric symptoms at the time of Parkinson disease diagnosis,³⁹ and that *Gpr88*-KD can reduce several of these deficits.

Indeed, dopamine loss increased the immobility count in the forced swim test, an indicator of behavioural despair linked to depression.²⁷ It also induced a decrease in social interaction and rearing behaviour related to novelty exploration,²⁴ 2 parameters that have been proposed as ecological and translational measures of apathy.²⁸ These results were also consistent with observations that the behavioural and social aspects of apathy are the most affected in Parkinson disease, and that they are specifically associated with depres-

sion.⁴⁰ Furthermore, apathy in Parkinson disease is frequently associated with cognitive impairment and dementia.⁴ In this regard, we also observed that the lesioned animals performed poorly in the social novelty discrimination task, suggesting an impairment of selective attention⁴¹ — a core component of the dysexecutive syndrome experienced by patients with Parkinson disease.⁸

However, we did not reproduce the deficits relating to anhedonia (sucrose preference) and sensorimotor gating (prepulse inhibition) that had been previously reported in other 6-OHDA models of Parkinson disease.^{42,43} Anhedonia in Parkinson disease has been associated with alterations in the mesolimbic dopamine pathway,⁴⁴ and prepulse inhibition alterations require extensive dopamine loss,⁴² suggesting that the lack of prepulse inhibition and sucrose

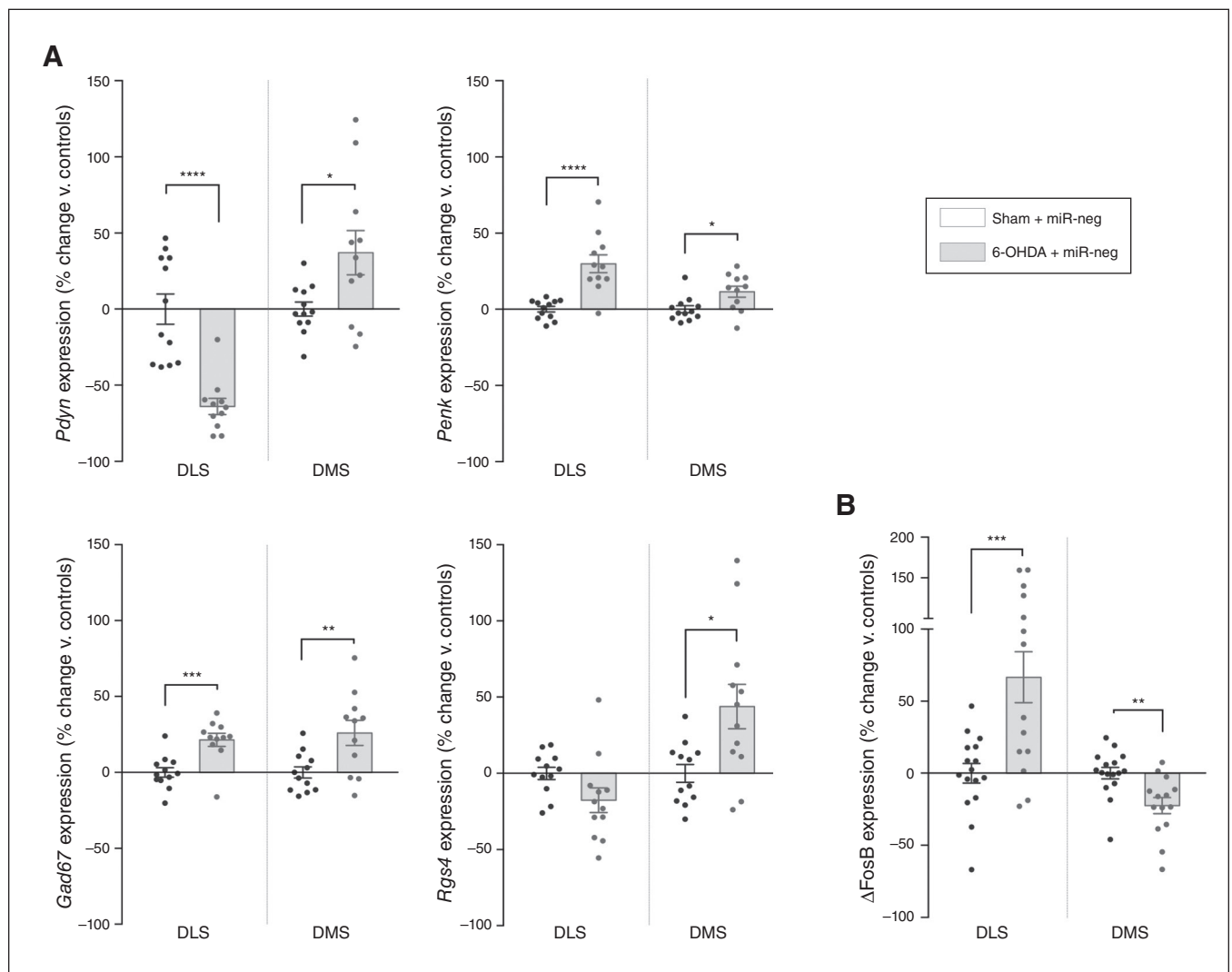


Fig. 5: Molecular changes induced by dopamine loss in the DLS also affect the adjacent DMS. (A) Expression of *Pdyn*, *Penk*, *Gad67* and *Rgs4* ($n = 12$ in each condition). (B) Expression of Δ FosB in the DLS and DMS of 6-OHDA lesioned rats ($n_{\text{sham + miR-neg}} = 16$; $n_{\text{6-OHDA + miR-neg}} = 14$). Values were normalized to those of the control group (Sham + miR-neg) and expressed as percent change. Data are presented as mean \pm standard error of the mean, and were compared using multiple t tests with Holm–Sidak corrections. * $p < 0.05$; ** $p < 0.01$; *** $p < 0.001$; **** $p < 0.0001$. Δ FosB = truncated splice variant of FosB; 6-OHDA = 6-hydroxydopamine; DLS = dorsolateral striatum; DMS = dorsomedial striatum; miR = micro RNA; miR-neg = micro RNA negative.

preference alterations in our model were due to the restricted nature of the lesion.

Importantly, although the inactivation of *Gpr88* in the lesioned DLS tended to have an effect on some of the altered behaviours, only the knockdown in the intact associative DMS reversed all of the behavioural deficits induced by dopamine loss, suggesting an effect that could be related to functional cross-talk between these 2 regions.⁴⁵ In the DMS, *Gpr88*-KD also increased sensorimotor gating in the prepulse inhibition test, indicating an increased efficiency of preattentive information processing, which could underlie the pro-attentional effect in the social novelty discrimination task. Interestingly, computational models of Parkinson disease psychosis have linked the emergence of hallucinations to deficits in such gating and attentional processes,⁴⁶ suggesting that *Gpr88*-KD may constitute a relevant target for evaluating this symptom in animal models.

The restricted loss of dopamine inputs to the sensorimotor territories of the striatum also altered the expression of molecular markers of neuronal activity, signalling and transcription beyond the lesioned area, significantly affecting associative territories. For instance, although the lesion locally induced a decrease in *Pdyn* and an increase in *Penk* and *Gad67* expression levels (reproducing the imbalance in neuronal activity that has been characterized in Parkinson disease models^{31,32}), their expression was significantly elevated in the DMS, suggesting a compensatory overactivity of neurons in response to dopamine depletion in the DLS.

A previous study had reported that 6-OHDA lesions induced a decrease in *Gpr88* mRNA and protein expression after 1 and 4 weeks,¹¹ but we did not observe such an effect at 6 weeks, suggesting a time-dependent recovery of *Gpr88* expression following dopamine loss. The *Gpr88*-KD in the lesioned DLS was associated with a significant decrease in

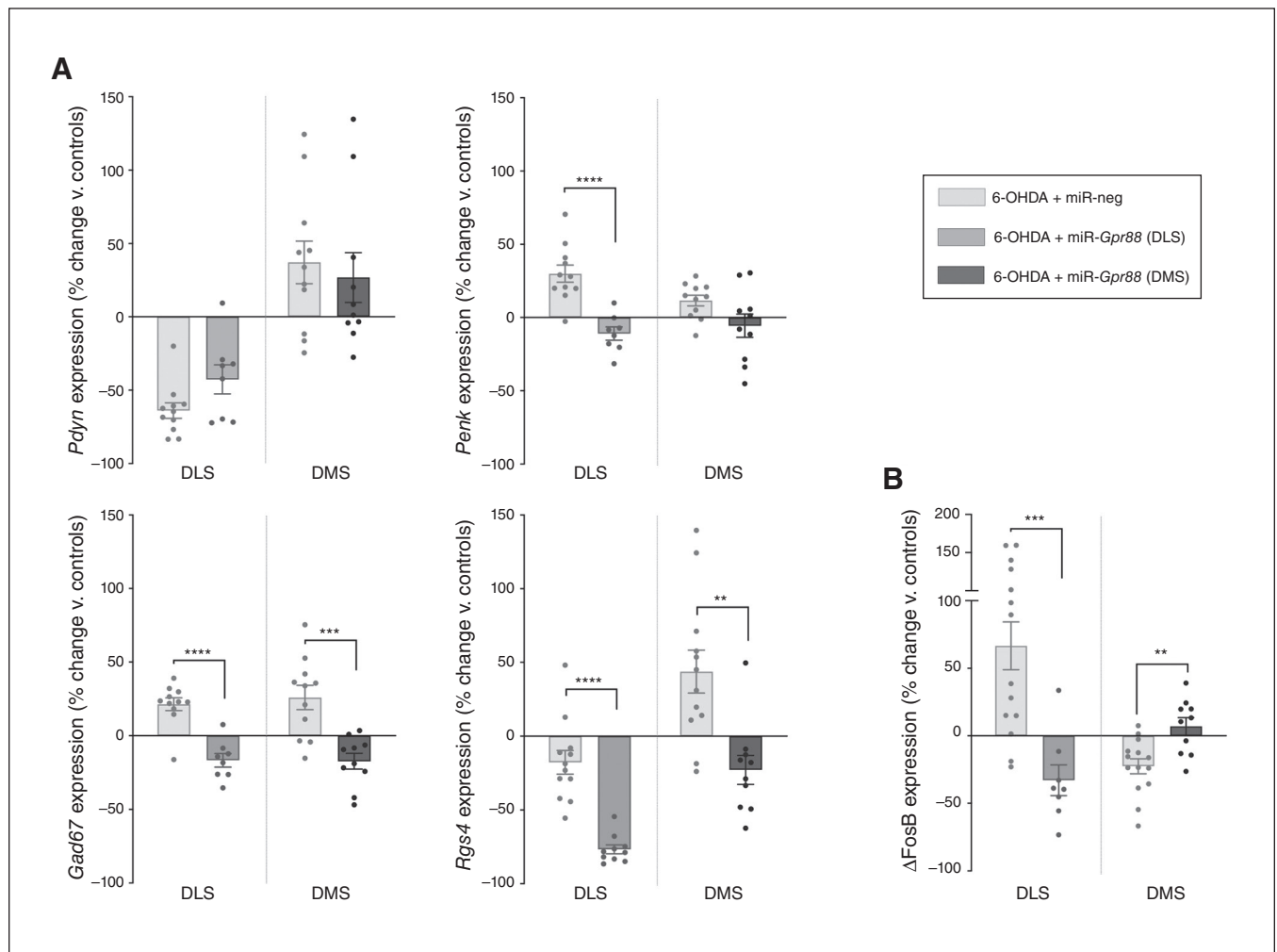


Fig. 6: *Gpr88* knockdown modulates markers of neuronal activity, signalling and transcription. (A) Expression of *Pdyn*, *Penk*, *Gad67* and *Rgs4*. (B) Expression of Δ FosB in the DLS and DMS after *Gpr88* knockdown ($n_{6\text{-OHDA} + \text{miR-neg}} = 12\text{--}14$, $n_{6\text{-OHDA} + \text{miR-Gpr88}} = 8\text{--}10$). Values were normalized to those of the control group (Sham + miR-neg; shown in Fig. 5) and expressed as percent change. Data are presented as mean \pm standard error of the mean, and were compared using multiple *t* tests with Holm–Sidak corrections. ** $p < 0.01$, *** $p < 0.001$, **** $p < 0.0001$. Δ FosB = truncated splice variant of FosB; 6-OHDA = 6-hydroxydopamine; DLS = dorsolateral striatum; DMS = dorsolateral striatum; miR = micro RNA; miR-neg = micro RNA negative; miR-*Gpr88* = micro RNA against *Gpr88*.

the expression of *Penk* and *Gad67*, suggesting that *Gpr88*-KD preferentially affects iMSN, which is consistent with the receptor's relative enrichment in this neuronal type¹¹ and the hypersensitivity to dopamine receptor type 2 agonists that has been consistently reported in *Gpr88*-KO mice.^{12,14} Because GPR88 is also known to modulate enkephalin delta opioid receptor signalling,¹⁵ the reduction in *Penk* expression observed after *Gpr88*-KD may have resulted partly from a potentiation of this receptor's effects. In the DMS, *Gpr88*-KD reduced *Gad67* overexpression without significantly affecting *Penk* or *Pdyn*, suggesting a potential decrease in γ -aminobutyric acid interneuron activity,³² in which GPR88 expression has been also reported.¹¹

A GTPase accelerating protein, RGS4 negatively regulates the signalling of Gi/o- and Gq-associated receptors such as dopamine receptor types 2 and 3,⁴⁷ metabotropic glutamate receptor type 5⁴⁸ and muscarinic acetylcholine receptor M4.³⁵ Previous studies have reported decreases in striatal RGS4 mRNA in people with Parkinson disease⁴⁹ and in 6-OHDA-lesioned rodents.⁵⁰ Although *Rgs4* expression was slightly decreased in the DLS ($p = 0.06$), it was also strikingly elevated in the DMS. However, this overexpression was completely reversed by *Gpr88*-KD, an effect that was in line with findings from knockout mice.^{12,15} Interestingly, in models of Parkinson disease, inhibition or loss of *Rgs4* has been shown to have potent antiparkinsonian effects,⁵¹ notably by restoring long-term depression in iMSN.³⁴ However, translation to the clinic of these findings has been impeded by the high risk of adverse effects due to the ubiquitous presence of RGS4. Therefore, targeting GPR88 may constitute a unique strategy for bypassing these limitations, by inhibiting RGS4 with high spatial relevance, because GPR88 is exclusively expressed in the central nervous system and is mostly enriched in the striatum, where its expression levels match the typical pattern of dopamine loss.⁵²

The 6-OHDA lesion and *Gpr88*-KD also had contrasting effects on the expression of transcription factor Δ FosB. Although Δ FosB accumulation in Parkinson disease has been linked to the effects of L-DOPA treatment,³⁶ we also observed an increase in the DLS of the lesioned rats. This unexpected effect could have been due to stimulation of hypersensitive D1 receptors in the DLS, resulting from a "volume transmission" effect from the unlesioned striatum.⁵³ In the DMS, however, we found a significant decrease in Δ FosB expression, which was reversed by *Gpr88*-KD. Interestingly, the antidepressant effect of *Gpr88*-KD observed in the forced swim test may have been due to its modulation of Δ FosB, because fluoxetine is also known to increase the expression of this transcription factor in the DMS.⁵⁴

The finding that the knockdown of *Gpr88* in the associative striatum reduced behavioural deficits and normalized the expression of *Rgs4* and Δ FosB must be integrated with our other recent work showing that *Gpr88*-KD in the dorsal striatum has an antiparkinsonian-like effect in a model of the motor symptoms of Parkinson disease by regulating the expression of *Pdyn*, *Penk* and Δ FosB.¹⁷ Thus, although the models we used are not easily comparable, taken together our results indicate that GPR88 may represent an unique

target for treating both the psychiatric and the motor symptoms of Parkinson disease and avoiding some of the shortcomings of current therapies.

Moreover, this study's findings may also provide insights into the etiology of the psychiatric symptoms of Parkinson disease. Indeed, although psychiatric symptoms have been linked to alterations in multiple neurotransmitter systems,¹⁹ clustering studies of de novo patients suggest that the loss of striatal dopamine in particular may play an important role in their emergence.⁵⁵ This idea is further supported by studies in rodent models, which have consistently shown that inducing extensive dopamine loss throughout the striatum could induce representative behavioural deficits.⁴³ Nevertheless, these models have not necessarily accounted for the frequent premotor appearance of these symptoms, when dopamine loss is limited mainly to the sensorimotor areas of the striatum.¹⁸ In this regard, our results show that such a restricted loss of dopamine is in itself sufficient to reproduce these behavioural alterations in an animal model.

However, these psychiatric aspects of Parkinson disease have typically been associated with dopamine dysfunction in associative networks (DMS),¹⁹ which are relatively preserved in the early stages of the disease, as well as in our model. Nevertheless, the overexpression of neuronal activity markers that we observed in the DMS suggests possible interactions between striatal areas. Interestingly, some functional MRI studies in people with Parkinson disease have also found that although functional connectivity decreased in the dopamine-deprived sensorimotor networks of the basal ganglia, it was increased in associative networks.^{56,57} These increases are thought to reflect early Parkinson disease allostatic mechanisms, by which associative networks expand or strengthen their connectivity to compensate for the loss of dopamine in sensorimotor territories. Although the underlying mechanisms are currently unknown, recently characterized striatonigrostriatal cellular pathways may provide a system for such lateral transfer of information.⁵⁸ However, because of the resulting overlap of networks within limited striatal computational resources, it has been suggested that this compensatory mechanism could lead to a "neural bottleneck" or "overload" of associative networks, and an impairment in related behaviours.^{21,57} This hypothesis could explain the emergence of psychiatric deficits relating to cognition and motivation during the earliest stages of Parkinson disease and in the striatal 6-OHDA focalized-lesion model of Parkinson disease, before the loss of dopamine affects associative networks.

Although such imbalances in DMS/DLS dynamics are emerging as key players in the pathophysiology of basal ganglia disorders such as addiction⁵⁹ and obsessive-compulsive disorder,⁶⁰ this study is, to our knowledge, the first to enquire into this concept in a rodent model of Parkinson disease.

Limitations

Several factors need to be investigated further. For instance, behavioural tests assessing specific cognitive and motivational parameters are needed to better characterize

the effects of the lesion and of *Gpr88*-KD. Because the model reproduced aspects of early-stage Parkinson disease, it will also be necessary to assess the effects of the *Gpr88*-KD in models of advanced Parkinson disease, presenting more extensive dopamine loss and alterations in other neurotransmitter systems. Furthermore, although molecular experiments have provided some clues about the mechanisms involved, additional in-depth studies are required, because little is known about the signalling pathways regulated by *GPR88* in different striatal cell types (dMSN/iMSN/interneurons).

Conclusion

Although the restricted expression of GPR88 makes it an ideal therapeutic target, no antagonist has so far been developed for this orphan receptor. It is thus crucial to develop lead identification efforts. Nevertheless, gene-therapy approaches have shown successful applications in Parkinson disease.⁶¹ Based on our findings, *GPR88* gene therapy could constitute a highly relevant non-dopaminergic strategy for treating the psychiatric and the motor symptoms of Parkinson disease through striatal-level modulation of allostatic basal ganglia function.

Acknowledgments: The lentiviral vectors were produced by the in-house iVector facility. In vivo experiments were carried out in the PHENOPARC core facility, and histological procedures were performed at the HISTOMICS platform, both also situated in the ICM. The authors thank Annick Prigent for her time and advice related to the histological processing of the samples.

Affiliation: Biotechnology and Biotherapy team, ICM Brain and Spine Institute, Sorbonne University/INSERM U 1127/CNRS UMR 7225, CHU Pitié-Salpêtrière, Paris, France (Galet, Ingallinesi, Pegon, Do Thi, Ravassard, Faucon Biguet, Meloni).

Funding: The research leading to these results has received funding from the program Investissements d'avenir ANR-10-IAIHU-06. B. Galet was supported by a scholarship from the French Ministry of Research, awarded by the Brain-Cognition-Behavior Doctoral School of the Sorbonne University. The PHENOPARC Core is supported by 2 Investissements d'avenir grants (ANR-10-IAIHU-06 and ANR-11-INBS-0011-NeurATRIS) and the Fondation pour la Recherche Médicale. The funding sources had no further role in study design; in the collection, analysis and interpretation of data; in the writing of the report; or in the decision to submit the paper for publication.

Competing interests: None declared.

Contributors: B. Galet, P. Ravassard and R. Meloni designed the study. B. Galet, M. Ingallinesi, J. Pegon, A. Do Thi, N. Faucon Biguet and R. Meloni acquired the data, which B. Galet, A. Do Thi, N. Faucon Biguet and R. Meloni analyzed. B. Galet and R. Meloni wrote the article, which all authors reviewed. All authors approved the final version to be published and can certify that no other individuals not listed as authors have made substantial contributions to the paper.

Content licence: This is an Open Access article distributed in accordance with the terms of the Creative Commons Attribution (CC BY-NC-ND 4.0) licence, which permits use, distribution and reproduction in any medium, provided that the original publication is properly cited, the use is non-commercial (i.e. research or educational use), and no modifications or adaptations are made. See: <https://creativecommons.org/licenses/by-nc-nd/4.0/>

References

- Duncan GW, Khoo TK, Yarnall AJ, et al. Health-related quality of life in early Parkinson's disease: the impact of nonmotor symptoms. *Mov Disord* 2014;29:195-202.
- Sierra M, Carnicella S, Strafella AP, et al. Apathy and impulse control disorders: yin & yang of dopamine dependent behaviors. *J Parkinsons Dis* 2015;5:625-36.
- Schapira AHV, Chaudhuri KR, Jenner P. Non-motor features of Parkinson disease. *Nat Rev Neurosci* 2017;18:435-50.
- Pagonabarraga J, Kulisevsky J, Strafella AP, et al. Apathy in Parkinson's disease: clinical features, neural substrates, diagnosis, and treatment. *Lancet Neurol* 2015;14:518-31.
- Darweesh SK, Verlinden VJ, Stricker BH, et al. Trajectories of pre-diagnostic functioning in Parkinson's disease. *Brain* 2017;140:429-41.
- Rodriguez-Oroz MC, Jahanshahi M, Krack P, et al. Initial clinical manifestations of Parkinson's disease: features and pathophysiological mechanisms. *Lancet Neurol* 2009;8:1128-39.
- Weintraub D, Burn DJ. Parkinson's disease: the quintessential neuropsychiatric disorder. *Mov Disord* 2011;26:1022-31.
- Svenningsson P, Westman E, Ballard C, et al. Cognitive impairment in patients with Parkinson's disease: diagnosis, biomarkers, and treatment. *Lancet Neurol* 2012;11:697-707.
- Del Zompo M, Deleuze JF, Chillotti C, et al. Association study in three different populations between the GPR88 gene and major psychoses. *Mol Genet Genomic Med* 2014;2:152-9.
- Alkufri F, Shaag A, Abu-Libdeh B, et al. Deleterious mutation in GPR88 is associated with chorea, speech delay, and learning disabilities. *Neurol Genet* 2016;2:e64.
- Massart R, Guilloux J-P, Mignon V, et al. Striatal GPR88 expression is confined to the whole projection neuron population and is regulated by dopaminergic and glutamatergic afferents. *Eur J Neurosci* 2009;30:397-414.
- Quintana A, Sanz E, Wang W, et al. Lack of GPR88 enhances medium spiny neuron activity and alters motor- and cue-dependent behaviors. *Nat Neurosci* 2012;15:1547-55.
- Ye N, Li B, Mao Q, et al. Orphan receptor GPR88 as an emerging neurotherapeutic target. *ACS Chem Neurosci* 2019;10:190-200.
- Logue SF, Grauer SM, Paulsen J, et al. The orphan GPCR, GPR88, modulates function of the striatal dopamine system: a possible therapeutic target for psychiatric disorders? *Mol Cell Neurosci* 2009;42:438-47.
- Meersman AC, Le Merrer J, Pellissier LP, et al. Mice lacking Gpr88 show motor deficit, improved spatial learning, and low anxiety reversed by delta opioid antagonist. *Biol Psychiatry* 2016;79:917-27.
- Ingallinesi M, Le Bouil L, Faucon Biguet N, et al. Local inactivation of Gpr88 in the nucleus accumbens attenuates behavioral deficits elicited by the neonatal administration of phencyclidine in rats. *Mol Psychiatry* 2015;20:951-8.
- Ingallinesi M, Galet B, Pegon J, et al. Knock-down of GPR88 in the dorsal striatum alters the response of medium spiny neurons to the loss of dopamine input and L-3-4-dihydroxyphenylalanine. *Front Pharmacol* 2019;10:1233.
- Brooks DJ, Pavese N. Imaging biomarkers in Parkinson's disease. *Prog Neurobiol* 2011;95:614-28.
- Qamar MA, Sauerbier A, Politis M, et al. Presynaptic dopaminergic terminal imaging and non-motor symptoms assessment of Parkinson's disease: evidence for dopaminergic basis? *NPJ Parkinsons Dis* 2017;3:5.
- Kilkenny C, Browne WJ, Cuthill IC, et al. Improving bioscience research reporting: the ARRIVE guidelines for reporting animal research. *PLoS Biol* 2010;8:e1000412.
- Redgrave P, Rodriguez M, Smith Y, et al. Goal-directed and habitual control in the basal ganglia: implications for Parkinson's disease. *Nat Rev Neurosci* 2010;11:760-72.
- Paxinos G, Watson C. *The rat brain, in stereotaxic coordinates*. Academic Press: San Diego; 1997.
- Drui G, Carnicella S, Carcenac C, et al. Loss of dopaminergic nigrostriatal neurons accounts for the motivational and affective deficits in Parkinson's disease. *Mol Psychiatry* 2014;19:358-67.

24. Lever C, Burton S, O'Keefe J. Rearing on hind legs, environmental novelty, and the hippocampal formation. *Rev Neurosci* 2006;17:111-33.
25. Bonito-Oliva A, Pignatelli M, Spigolon G, et al. Cognitive impairment and dentate gyrus synaptic dysfunction in experimental parkinsonism. *Biol Psychiatry* 2014;75:701-10.
26. Zoetmulder M, Biernat HB, Nikolic M, et al. Prepulse inhibition is associated with attention, processing speed, and 123I-FP-CIT SPECT in Parkinson's disease. *J Parkinsons Dis* 2014;4:77-87.
27. Slattery DA, Cryan JF. Using the rat forced swim test to assess antidepressant-like activity in rodents. *Nat Protoc* 2012;7:1009-14.
28. Cathomas F, Hartmann MN, Seifritz E, et al. The translational study of apathy—an ecological approach. *Front Behav Neurosci* 2015;9:241.
29. Gerfen CR, Surmeier DJ. Modulation of striatal projection systems by dopamine. *Annu Rev Neurosci* 2011;34:441-66.
30. Carta A, Fenu S, Morelli M. Alterations in GAD67, dynorphin and enkephalin mRNA in striatal output neurons following priming in the 6-OHDA model of Parkinson's disease. *Neuro Sci* 2001;22:59-60.
31. Sgroi S, Tonini R. Opioidergic modulation of striatal circuits, implications in Parkinson's disease and levodopa induced dyskinesia. *Front Neurol* 2018;9:524.
32. Consolo S, Morelli M, Rimoldi M, et al. Increased striatal expression of glutamate decarboxylase 67 after priming of 6-hydroxydopamine-lesioned rats. *Neuroscience* 1999;89:1183-7.
33. Gerber KJ, Squires KE, Hepler JR. Roles for regulator of G protein signaling proteins in synaptic signaling and plasticity. *Mol Pharmacol* 2016;89:273-86.
34. Lerner TN, Kreitzer Anatol C. RGS4 is required for dopaminergic control of striatal LTD and susceptibility to Parkinsonian motor deficits. *Neuron* 2012;73:347-59.
35. Ding J, Guzman JN, Tkatch T, et al. RGS4-dependent attenuation of M4 autoreceptor function in striatal cholinergic interneurons following dopamine depletion. *Nat Neurosci* 2006;9:832-42.
36. Lindgren HS, Rylander D, Iderberg H, et al. Putaminal upregulation of FosB/DeltaFosB-like immunoreactivity in Parkinson's disease patients with dyskinesia. *J Parkinsons Dis* 2011;1:347-57.
37. Nestler EJ. DFosB: a transcriptional regulator of stress and antidepressant responses. *Eur J Pharmacol* 2015;753:66-72.
38. Deumens R, Blokland A, Prickaerts J. Modeling Parkinson's disease in rats: an evaluation of 6-OHDA lesions of the nigrostriatal pathway. *Exp Neurol* 2002;175:303-17.
39. Pont-Sunyer C, Hotter A, Gaig C, et al. The onset of nonmotor symptoms in Parkinson's disease (the ONSET PD study). *Mov Disord* 2015;30:229-37.
40. Ang YS, Lockwood PL, Kienast A, et al. Differential impact of behavioral, social, and emotional apathy on Parkinson's disease. *Ann Clin Transl Neurol* 2018;5:1286-91.
41. Terranova JP, Chabot C, Barnouin MC, et al. SSR181507, a dopamine D(2) receptor antagonist and 5-HT(1A) receptor agonist, alleviates disturbances of novelty discrimination in a social context in rats, a putative model of selective attention deficit. *Psychopharmacology (Berl)* 2005;181:134-44.
42. Issy AC, Padovan-Neto FE, Lazzarini M, et al. Disturbance of sensorimotor filtering in the 6-OHDA rodent model of Parkinson's disease. *Life Sci* 2015;125:71-8.
43. Magnard R, Vachez Y, Carcenac C, et al. What can rodent models tell us about apathy and associated neuropsychiatric symptoms in Parkinson's disease? *Transl Psychiatry* 2016;6:e753.
44. Husain M, Roiser JP. Neuroscience of apathy and anhedonia: a transdiagnostic approach. *Nat Rev Neurosci* 2018;19:470-84.
45. Gruber AJ, McDonald RJ. Context, emotion, and the strategic pursuit of goals: interactions among multiple brain systems controlling motivated behaviour. *Front Behav Neurosci* 2012;6:50.
46. Ffytche DH, Creese B, Politis M et al. The psychosis spectrum in Parkinson disease. *Nat Rev Neurol* 2017;13:81-95.
47. Min C, Cheong SY, Cheong SJ, et al. RGS4 exerts inhibitory activities on the signaling of dopamine D2 receptor and D3 receptor through the N-terminal region. *Pharmacol Res* 2012;65:213-20.
48. Schwendt M, Sigmon SA, McGinty JF. RGS4 overexpression in the rat dorsal striatum modulates mGluR5- and amphetamine-mediated behavior and signaling. *Psychopharmacology (Berl)* 2012;221:621-35.
49. Zhang Y, James M, Middleton FA, et al. Transcriptional analysis of multiple brain regions in Parkinson's disease supports the involvement of specific protein processing, energy metabolism, and signaling pathways, and suggests novel disease mechanisms. *Am J Med Genet B Neuropsychiatr Genet* 2005;137B:5-16.
50. Geurts M, Maloteaux JM, Hermans E. Altered expression of regulators of G-protein signaling (RGS) mRNAs in the striatum of rats undergoing dopamine depletion. *Biochem Pharmacol* 2003;66:1163-70.
51. Ko WK, Martin-Negrier ML, Bezard E, et al. RGS4 is involved in the generation of abnormal involuntary movements in the unilateral 6-OHDA-lesioned rat model of Parkinson's disease. *Neurobiol Dis* 2014;70:138-48.
52. Van Waes V, Tseng KY, Steiner H. GPR88: A putative signaling molecule predominantly expressed in the striatum: cellular localization and developmental regulation. *Basal Ganglia* 2011;1:83-9.
53. Taber KH, Hurley RA. Volume transmission in the brain: beyond the synapse. *J Neuropsychiatry Clin Neurosci* 2014;26:iv, 1-4.
54. Vialou V, Thibault M, Kaska S, et al. Differential induction of FosB isoforms throughout the brain by fluoxetine and chronic stress. *Neuropharmacology* 2015;99:28-37.
55. Moccia M, Pappata S, Picillo M, et al. Dopamine transporter availability in motor subtypes of de novo drug-naive Parkinson's disease. *J Neurol* 2014;261:2112-8.
56. Bell PT, Gilat M, O'Callaghan C, et al. Dopaminergic basis for impairments in functional connectivity across subdivisions of the striatum in Parkinson's disease. *Hum Brain Mapp* 2015;36:1278-91.
57. Helmich RC, Derikx LC, Bakker M, et al. Spatial remapping of corticostriatal connectivity in Parkinson's disease. *Cereb Cortex* 2010;20:1175-86.
58. Lerner TN, Shilyansky C, Davidson TJ, et al. Intact-brain analyses reveal distinct information carried by snc dopamine subcircuits. *Cell* 2015;162:635-47.
59. Belin D, Belin-Rauscent A, Murray JE, et al. Addiction: failure of control over maladaptive incentive habits. *Curr Opin Neurobiol* 2013;23:564-72.
60. Burguiere E, Monteiro P, Mallet L, et al. Striatal circuits, habits, and implications for obsessive-compulsive disorder. *Curr Opin Neurobiol* 2015;30:59-65.
61. Palfi S, Gurruchaga JM, Lepetit H, et al. Long-term follow-up of a phase I/II study of ProSavin, a lentiviral vector gene therapy for Parkinson's disease. *Hum Gene Ther Clin Dev* 2018;29:148-55.