

RESEARCH

Open Access



# The effects of 17 alpha-estradiol to inhibit inflammation in vitro

Roberta S. Santos<sup>1</sup>, Luciana A. de Fatima<sup>1</sup>, Aaron P. Frank<sup>1</sup>, Everardo M. Carneiro<sup>2†</sup> and Deborah J. Clegg<sup>1\*†</sup>

## Abstract

**Background:** 17 Alpha-estradiol (17  $\alpha$ -E2) is a natural, non-feminizing stereoisomer of 17 beta-estradiol (17  $\beta$ -E2). Whereas much is known about the physiological effects of 17  $\beta$ -E2, much less is known about 17  $\alpha$ -E2. For example, 17  $\beta$ -E2 exerts anti-inflammatory effects in neurons and adipocytes through binding and activation of estrogen receptor alpha (ER $\alpha$ ); however, if 17  $\alpha$ -E2 has similar effects on inflammation is currently unknown.

**Methods:** To begin to address this, we analyzed the ability of 17  $\alpha$ -E2 and 17  $\beta$ -E2 to suppress lipopolysaccharide (LPS)-induced inflammation in vitro using embryonic fibroblast cells (MEF) from wild type and total body ER $\alpha$  (ERKO) male and female mice. Additionally, we further probed if there were sex differences with respect to the effects of E2s using primary pre-adipocyte cells from C57BL/6J male and female mice. Also, we probed mechanistically the effects of E2s in fully differentiated 3T3-L1 cells.

**Results:** Both E2s decreased LPS-induced markers of inflammation *Tnf- $\alpha$*  and *Il-6*, and increased the anti-inflammatory markers *Il-4* and IL-6 receptor (*Il-6ra*) in MEF cells. To begin to understand the mechanisms by which both E2's mediate their anti-inflammatory effects, we probed the role of ER $\alpha$  using two methods. First, we used MEF cells from ERKO mice and found reductions in ER $\alpha$  diminished the ability of 17  $\alpha$ -E2 to suppress *Tnf- $\alpha$*  in female but not in male cells, demonstrating a sexual dimorphism in regard to the role of ER $\alpha$  to mediate 17  $\alpha$ -E2's effects. Second, we selectively reduced the expression of ER $\alpha$  in 3T3-L1 cells using siRNA and found reductions in ER $\alpha$  diminished the ability of both E2s to suppress *Tnf- $\alpha$*  and *Il-6* expression. Lastly, to determine the mechanisms by which E2s reduce inflammation, we explored the role of NF $\kappa$ B-p65 and found both E2s decreased NF $\kappa$ B-p65 expression.

**Conclusions:** In conclusion, we demonstrate for the first time that 17  $\alpha$ -E2, as well as 17  $\beta$ -E2, suppresses inflammation through their effects on ER $\alpha$  and NF $\kappa$ B-p65.

**Keywords:** 17 Alpha-estradiol (17  $\alpha$ -E2), 17 Beta-estradiol (17  $\beta$ -E2), Inflammation, Cell culture, Sexual dimorphism

## Background

Estrogens play a crucial role in suppressing the development of chronic inflammatory diseases [1] and mitigating the impact of inflammation that occurs in diseases such as obesity and type II diabetes mellitus [2]. There is a wealth of information indicating that adipose tissues become inflamed in obesity, and adipose tissue inflammation is highly correlated with insulin resistance, cancer, and other metabolic sequelae associated with increased adiposity [3, 4]. Therefore, preventing or treating adipose tissue inflammation is undoubtedly important to prevent the development

and slow the progression of metabolic diseases. Importantly, there appears to be a sexual dimorphism regarding the prevalence of diseases such as obesity, type II diabetes, and cardiovascular disease, with adult males presenting with a higher prevalence and enhanced disease risk when compared to adult females; however, following menopause, women become as susceptible as men to diseases associated with obesity [2]. Specifically, it has been demonstrated that loss of estrogens during the menopausal transition leads to increased expression and secretion of pro-inflammatory cytokines such as tumor necrosis factor-alpha (TNF- $\alpha$ ) and interleukin 6 (IL-6) [5].

Estrogens are a family of compounds that include 17 alpha-estradiol (17  $\alpha$ -E2) as well as 17 beta-estradiol (17  $\beta$ -E2). 17  $\beta$ -E2 is the main circulating and biologically

\* Correspondence: [deborah.clegg@cshs.org](mailto:deborah.clegg@cshs.org)

<sup>†</sup>Equal contributors

<sup>1</sup>Biomedical Sciences Dept, Diabetes and Obesity Research Division, Cedars-Sinai Medical Center, 8700 Beverly Blvd, Los Angeles, CA 90048, USA  
Full list of author information is available at the end of the article

most active form of estrogen [6, 7], and it is well established that 17  $\beta$ -E2 decreases markers of inflammation [8]; however, the exact mechanisms by which it interferes with inflammatory processes are not fully understood. It appears that most of the anti-inflammatory effects of estrogens in non-reproductive tissues occur by activating estrogen receptors (ERs), mainly ER $\alpha$  (ER $\alpha$ ) [9]. We have previously demonstrated that ER $\alpha$  is the predominant ER in the adipose tissue, and there are studies suggesting that ER $\alpha$  polymorphisms lead to adipose tissue accumulation, increased insulin resistance, and inflammation [10]. It has been shown that 17  $\beta$ -E2 binds ER $\alpha$  and inhibits the transcription of *Tnf- $\alpha$*  and *Il-6* genes [11, 12]. In addition, through a transcriptional cross-talk between ER $\alpha$  and NF $\kappa$ B (NF $\kappa$ B), 17  $\beta$ -E2 inhibits the transcription of *Il-6* [13]. Furthermore, there are data to suggest that 17  $\beta$ -E2, in a nongenomic manner, can inhibit inflammation by modulating NF $\kappa$ B trafficking to the nucleus through activation of the PI3K/AKT pathway [14].

17  $\alpha$ -E2 is a natural, non-feminizing isomer of 17  $\beta$ -E2 [15], and its mechanisms of action and function are relatively unknown. 17  $\alpha$ -E2 has been found in various tissues of adult male and female mice. Its concentrations are higher in the brain and adrenal glands compared to 17  $\beta$ -E2 and lower in the ovaries, uterus, and serum [16]. Currently, there are less data on the location and tissue content of 17  $\alpha$ -E2 in humans; however, there is evidence of endogenous 17  $\alpha$ -E2 in the urine and serum of humans [17, 18]. Importantly, 17  $\alpha$ -E2 is different from the synthetic compound mostly used in oral contraceptives and postmenopausal hormone therapy, 17  $\alpha$ -ethynylestradiol [19, 20]; importantly, little is known about either of these estrogenic compounds and even less is known about their anti-inflammatory activities [21–24]. Recently, aged male mice fed a diet enriched in 17  $\alpha$ -E2 had reductions in body adiposity and markers of inflammation in plasma and adipose tissue [20], and there are data to suggest that 17  $\alpha$ -E2 may have neuroprotective effects [25]. 17  $\alpha$ -E2 appears to have the capacity to bind to ERs, but with lower affinity than 17  $\beta$ -E2 [26].

In contrast to 17  $\alpha$ -E2, 17  $\beta$ -E2 also has feminizing effects and can lead to uterine and ER-positive breast cancer in postmenopausal women [27–30]. Recently, Stout et al. (2017) [20] demonstrated reductions in inflammatory markers in adipose tissue in mice who were fed diets enriched in 17  $\alpha$ -E2. Since adipose tissue inflammation is key to the development of several diseases related to obesity, 17  $\alpha$ -E2 may be useful in treating metabolic disease, while avoiding the side effects of traditional 17  $\beta$ -E2 exposure. Here, we explored the anti-inflammatory effects of both E2s in vitro to begin to characterize the mechanisms which underlie the potential therapeutic benefit of 17  $\alpha$ -E2 for women and, possibly, men.

## Methods

### Cell culture

Briefly, mouse embryonic fibroblast (MEF) cells were generated from C57BL/6J WT and total body ER $\alpha$  knock-out (ERKO) mice. ERKO mice were a gift from Pierre Chambon [31]. Embryos from WT and ERKO mice were harvested from two approximately 2–3-month-old dams, who were fed a chow diet optimized for breeding (#2019, Harlan Teklad, Madison, WI). Mice were mated and conception was visually confirmed by the presence of a mating plug. Thirteen days after conception, dams were euthanized and embryos removed. Embryos were sacrificed by decapitation, and embryo heads were collected for genotyping. The embryos were then washed in sterile PBS, minced with a razor blade in 2 mL trypsin (0.25%, Gibco). Following 5 min of incubation at 37 °C, the minced tissue was pipetted up and down to produce a homogenous cell suspension. The homogenate was then incubated an additional 5 min at 37 °C and then evenly applied to a 50 mL petri dish containing 25 mL of culture media (DMEM High glucose medium with 10% FBS, 1% Pen/Strep, and 1 mM NaPyr) and incubated at 37 °C. Cells were passaged once they reached ~90% confluency. Primary pre-adipocytes were generated as previously described [32].

MEF cells were cultured in DMEM no-phenol red (Thermo Fisher Scientific, Waltham, USA), supplemented with 10% charcoal: dextran stripped fetal bovine serum (FBS, Gemini Bio Products, Sacramento, USA), 1% pen-strep 10,000 U/ml (Thermo Fisher), and 1% sodium pyruvate 100 mM (Thermo Fisher). Primary pre-adipocytes were cultured in DMEM/F-12 with GlutaMAX phenol red (Thermo Fisher) supplemented with 10% FBS and 1% pen-strep 10,000 U/ml. 3T3-L1 cells were grown in DMEM phenol-red media (ATCC, Manassas, USA), supplemented with 10% Bovine calf bovine serum (ATCC) and 1% pen-strep. After 48 h of confluency, DMEM was supplemented with methylisobutylxanthine (IBMX, 0.5 mM, Sigma, St Louis, USA), dexamethasone (1  $\mu$ M, BD Biosciences, San Jose, USA), and insulin 10  $\mu$ g/ml (Sigma) [33], and serum was replaced FBS. Following 48 h of exposure, cells were cultured in DMEM supplemented only with insulin. For all cells, medium was replaced by DMEM no phenol-red supplemented with 10% charcoal: dextran stripped FBS 24 h before and during treatments.

Cells were treated for the indicated time with 17  $\alpha$ -E2 (Sigma) or 17  $\beta$ -E2 (Sigma) at 10  $\mu$ M concentration. Inflammation was induced by LPS at a concentration of 10 ng/ml (Sigma) either alone or in combination with the respective estrogen.

### RNAi in cell culture

In this series of experiments, we used siRNA to knock-down *Esr-1* (ER $\alpha$  gene) in the presence and absence of

estrogens to determine if ER $\alpha$  mediates estrogens' effects on inflammation. To do this, 3T3-L1 cells were cultured in 12-well plates and transfected at day 10 of differentiation with siRNA targeting murine *Esr-1* (siGENOME Mouse *siEsr1*, GE Dharmacon, Lafayette, USA, at the concentration of 100 nM). As a control, cells were treated with an unrelated control/scrambled sequence siRNA at the same concentration (siGENOME non-targeting siRNA, GE Dharmacon). Lipofectamine RNAi max was used as the transfection reagent (Thermo Fisher, at the concentration of 20 pM/ $\mu$ l), according to the manufacturer's instructions. Seventy-two hours after siRNA transfection, cells were treated with estrogens and LPS as indicated, and then lysed for RNA extraction.

#### Quantitative real-time PCR

Relative expression of the pro-inflammatory genes Tumor Necrosis Factor Alpha (*Tnf- $\alpha$* ); interleukin 6 (*Il-6*); and Nuclear Factor Kappa B Subunit 1 (*Nfkb1*), and anti-inflammatory genes interleukin 4 (*Il-4*), and interleukin 6 receptor alpha (*Il-6ra*) were quantified following LPS and/or E2s using qPCR. To determine the impact of treatments on ER $\alpha$ , we also quantified *Esr-1* gene expression. Cells were washed twice with PBS (Thermo Fisher) and lysed in 500  $\mu$ l of TRIzol<sup>®</sup> reagent (Thermo Fisher). RNA from cells was extracted and isolated using the RNeasy kit (Qiagen, Germantown, USA), according to the manufacturer's instructions. The concentration and purity of RNA were determined by spectrophotometric analysis (NanoDrop ND-1000, Thermo Fisher), and all samples had a  $A_{260}/A_{280}$  ratio around 2.0 [34]. Total cDNA was synthesized using the High Capacity cDNA Reverse Transcription kit (Applied Biosystems, Foster City, USA). Real-time qPCR was performed using Taqman Universal Mastermix II (Applied Biosystems) and Taqman specific primers, on the QuantStudio 12 K Flex Real-Time PCR System. Mouse *Gapdh* was used as reference gene, and data was normalized and relative expression determined using  $2^{-\Delta\Delta CT}$  method.

#### Western blotting

We determined total protein levels of ER $\alpha$ , as well as protein levels and cellular location of NF $\kappa$ B p65. NF $\kappa$ B fractions in the cytosol or nucleus were normalized to total NF $\kappa$ B expression. Briefly, for total protein, 150  $\mu$ l of RIPA buffer (Thermo Fisher), supplemented with anti-phosphatase cocktail (PhosphoSTOP Easy pack, Sigma) and anti-protease cocktail (Complete mini protease inhibitor, Sigma), was used per well. After sample centrifugation, the supernatant was separated and used to quantify protein concentration and prepare samples for gel electrophoresis and Western blotting. For cell fractionation, the protocol adapted from Silva et al. (2005) [35] was used.

Protein concentrations were determined by BCA (Thermo Fisher). Proteins (30–50  $\mu$ g) were separated by electrophoresis (Bio-Rad, Hercules, USA) and electrotransferred to nitrocellulose membrane (Trans-turbo transfer pack, Bio-Rad). Non-specific binding sites were saturated by incubation of membranes for 1 h in TBS (supplemented with 1% Tween 20) and 5% non-fat powdered milk, followed by overnight incubation with primary antibodies (NF $\kappa$ B p65, Sc8008, St Cruz Biotechnology, Dallas, USA; ER $\alpha$ , Sc542, St Cruz, at the concentration of 1:1000). Appropriate secondary antibodies were used (Goat anti-mouse, SeraCare Life Sciences, Milford, USA, or Goat anti-rabbit, SeraCare, at the concentration of 1:10,000), followed by enhanced chemiluminescence assay (Bio-Rad). The optical density of blots was analyzed using ImageLab software (Bio-Rad), and  $\beta$ -actin (Sc1615, St Cruz) or histone (Sc10809, St Cruz) were used for normalization. The results were expressed as arbitrary units in comparison to the control group, which was set as 1.0.

#### Immunofluorescence

In this series, we verified protein expression and location of NF $\kappa$ B p65 and ER $\alpha$ . To do this, cells were fixed with 4% paraformaldehyde and permeabilized with 0.5% saponin. Cells were stained for primary antibodies NF $\kappa$ B p65 or ER $\alpha$  overnight (at the concentration of 1:50), and then incubated with fluorescent-labeled secondary antibody (Goat to mouse-Alexa Fluor, ab150116, Abcam, Cambridge, USA; Goat to rabbit- FITC, ab6717, Abcam, at the concentration of 1:200), followed by DAPI incubation. Slides were mounted with Vectashield (Vector Laboratories, Burlingame, USA). Images were captured using Keyence<sup>®</sup> BZ-9000 microscope and analyzed by Keyence<sup>®</sup> BZ-9000 software.

#### Statistical analysis

Data is presented as mean  $\pm$  SEM of three independent experiments. For primary cells, two mice were pooled and processed for each experiment, which yielded three biological replicates [36, 37]. Statistical analysis was performed with GraphPad Prism version 6.0 for Windows (GraphPad software, San Diego, CA, USA). One-way ANOVA followed by Tukey post-test comparisons and two-tailed paired Student's test were used as appropriate.  $P < 0.05$  was considered statistically significant.

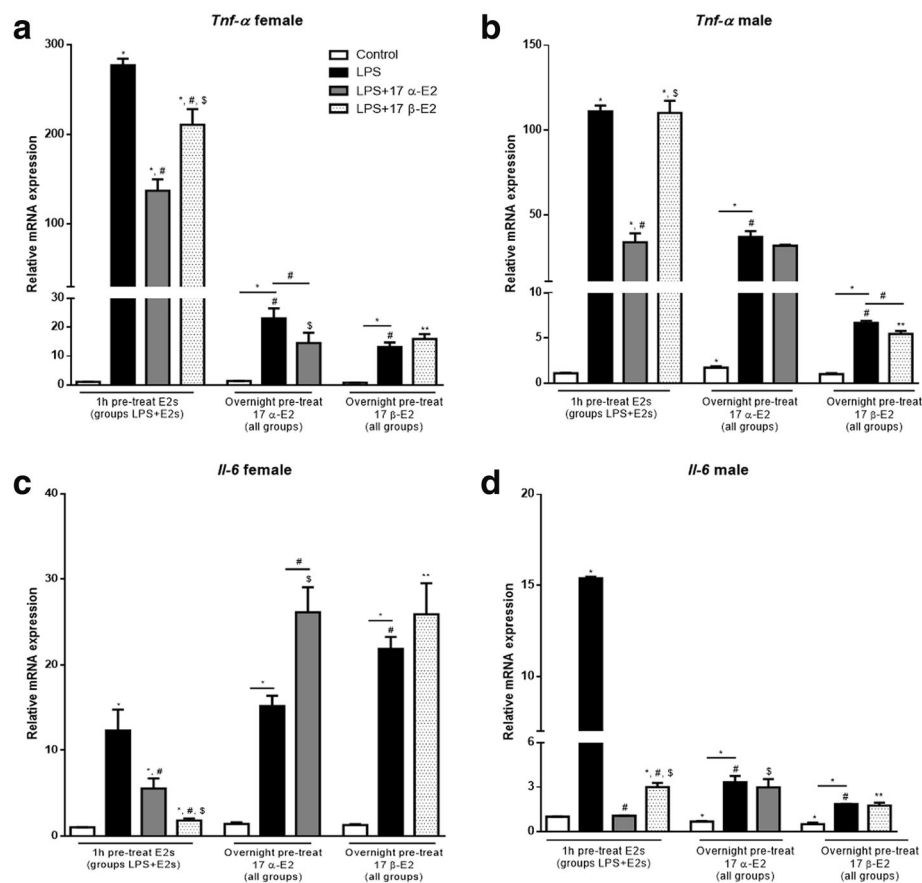
## Results

### 17 $\alpha$ -E2 and 17 $\beta$ -E2 attenuated LPS-induced inflammatory markers in both male and female MEF cells

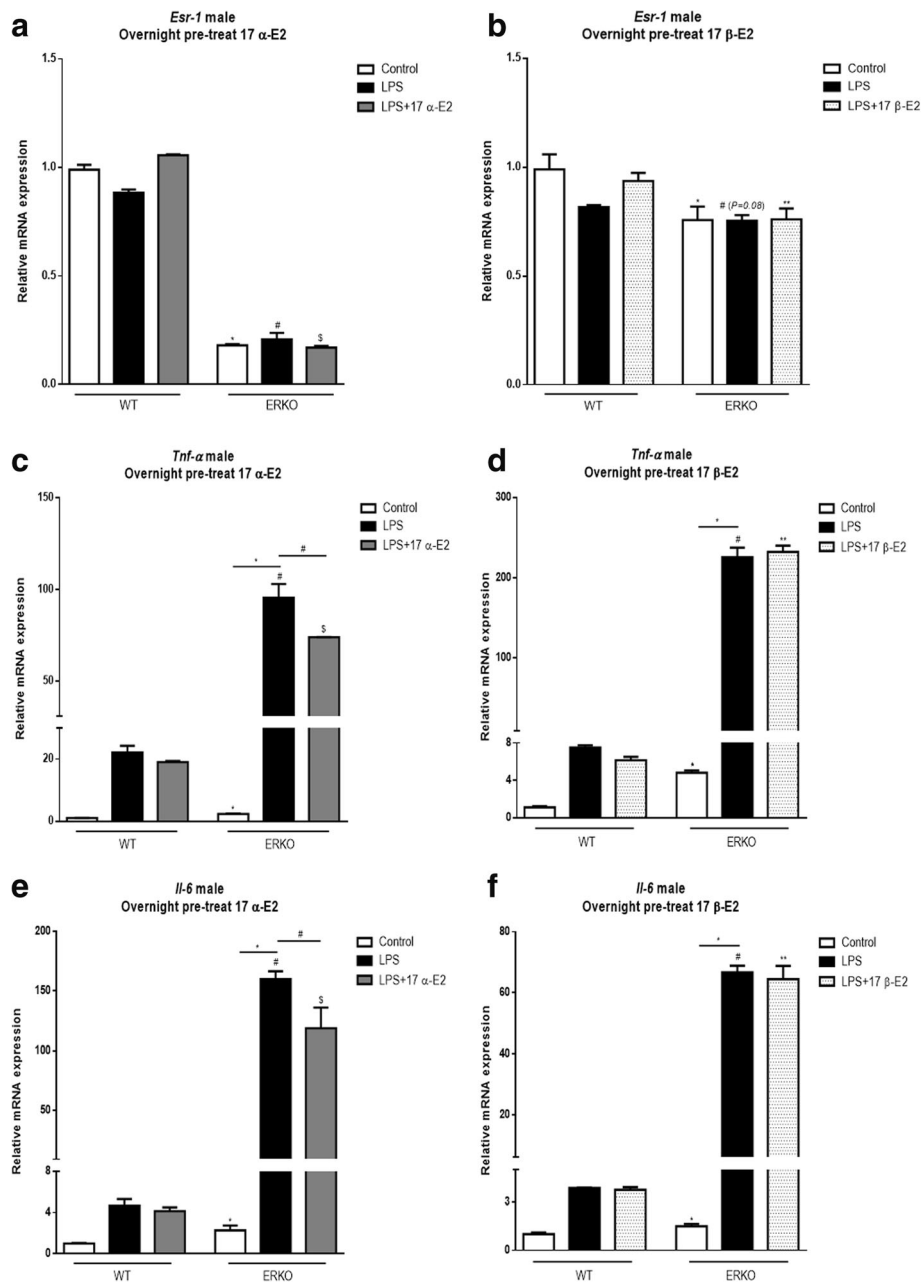
To begin to address the role of estrogens (E2s) on inflammatory markers in vitro, we directly applied 17  $\alpha$ -E2 and 17  $\beta$ -E2 to mouse embryonic fibroblast (MEF) cells derived from male and female C57BL/6J mice. To induce inflammation, MEFs were treated with LPS followed by the two

different estrogens. First, to determine if estrogens are able to suppress LPS-induced inflammation, cells were pre-treated overnight (12 h) with estrogens, followed by a 2-h LPS treatment. In an additional series of experiments to determine if estrogens are able to suppress LPS-induced inflammation with shorter exposure, cells were pre-treated with E2s for only 1 h, followed by 2 h LPS treatment. Long pre-exposure to 17  $\alpha$ -E2 or 17  $\beta$ -E2 prevented LPS-induced inflammation as demonstrated by reductions in *Tnf- $\alpha$*  mRNA expression in both male and female cells; however, following the short-term exposure, only 17  $\alpha$ -E2 was capable of reducing *Tnf- $\alpha$*  in both sexes (Fig. 1a, b). Interestingly, the longer exposure to E2s did not attenuate LPS-induced *Il-6* expression in female cells, but did in male cells; whereas, shorter exposure of both E2s decreased *Il-6* in both female (Fig. 1c) and male cells (Fig. 1d).

To begin to determine the role of ER $\alpha$  to mediate E2s' effects on inflammation, MEF cells were generated from mice lacking ER $\alpha$  (ERKO) and were tested using a similar paradigm (Fig. 2a, b, 3a, b). ERKO cells at baseline had higher markers of *Tnf- $\alpha$*  and *Il-6* genes both in male (Fig. 2c–f) and female (Fig. 3c–f) cells when compared to wild type, control cells. In male ERKO cells, 17  $\alpha$ -E2 treatment reduced LPS-induced *Tnf- $\alpha$*  and *Il-6* expression, indicating 17  $\alpha$ -E2 might activate other ERs to reduce inflammatory markers in male cells (Fig. 2c–f). In female ERKO cells, 17  $\alpha$ -E2 treatment reduced LPS-induced *Il-6* but not *Tnf- $\alpha$*  expression (Fig. 3c–f), indicating the ability of 17  $\alpha$ -E2 to decrease *Tnf- $\alpha$*  gene expression depends on ER $\alpha$  only in female cells. These intriguing data strongly support the hypothesis that male and female cells differ with respect to their response to 17  $\alpha$ -E2 to modulate inflammation, and ER $\alpha$  might modulate 17  $\alpha$ -E2's effects only in female cells.



**Fig. 1** Effects of 17  $\alpha$ -E2 and 17  $\beta$ -E2 on mouse embryonic fibroblast (MEF) cells derived from C57BL/6J female and male mice. **a** Cells were pre-treated with vehicle (control and LPS groups) or estrogens for 1 h (LPS + 17  $\alpha$ -E2 and LPS + 17  $\beta$ -E2 groups). Following which, the media was changed to either new media plus LPS (LPS group), or LPS + 17  $\alpha$ -E2 (LPS + 17  $\alpha$ -E2 group), or LPS + 17  $\beta$ -E2 (LPS + 17  $\beta$ -E2 group) for 2 h. **b** All groups were pre-treated overnight (approximately 12 h) with 17  $\alpha$ -E2 (control, LPS, and LPS + 17  $\alpha$ -E2 groups). Media was replaced on the next day by new media supplemented with LPS (LPS groups), or LPS + 17  $\alpha$ -E2 (LPS + 17  $\alpha$ -E2 group) for 2 h. **c** All groups were pre-treated overnight (approximately 12 h) with 17  $\beta$ -E2 (control, LPS, and LPS + 17  $\beta$ -E2 groups). Media was replaced on the next day by new media supplemented with LPS (LPS groups), or LPS + 17  $\beta$ -E2 (LPS + 17  $\beta$ -E2 group) for 2 h. Relative mRNA expression of *Tnf- $\alpha$*  (**a–b**), and *Il-6* (**c–d**). Data are presented as mean  $\pm$  SEM values. Asterisk indicates  $P < 0.05 \times$  control group (C). Pound indicates  $P < 0.05 \times$  LPS group. Dollar sign indicates  $P < 0.05 \times$  LPS + 17  $\alpha$ -E2 group. Two asterisks indicates  $P < 0.05 \times$  LPS + 17  $\beta$ -E2 group ( $n = 3$  independent rounds of cells)

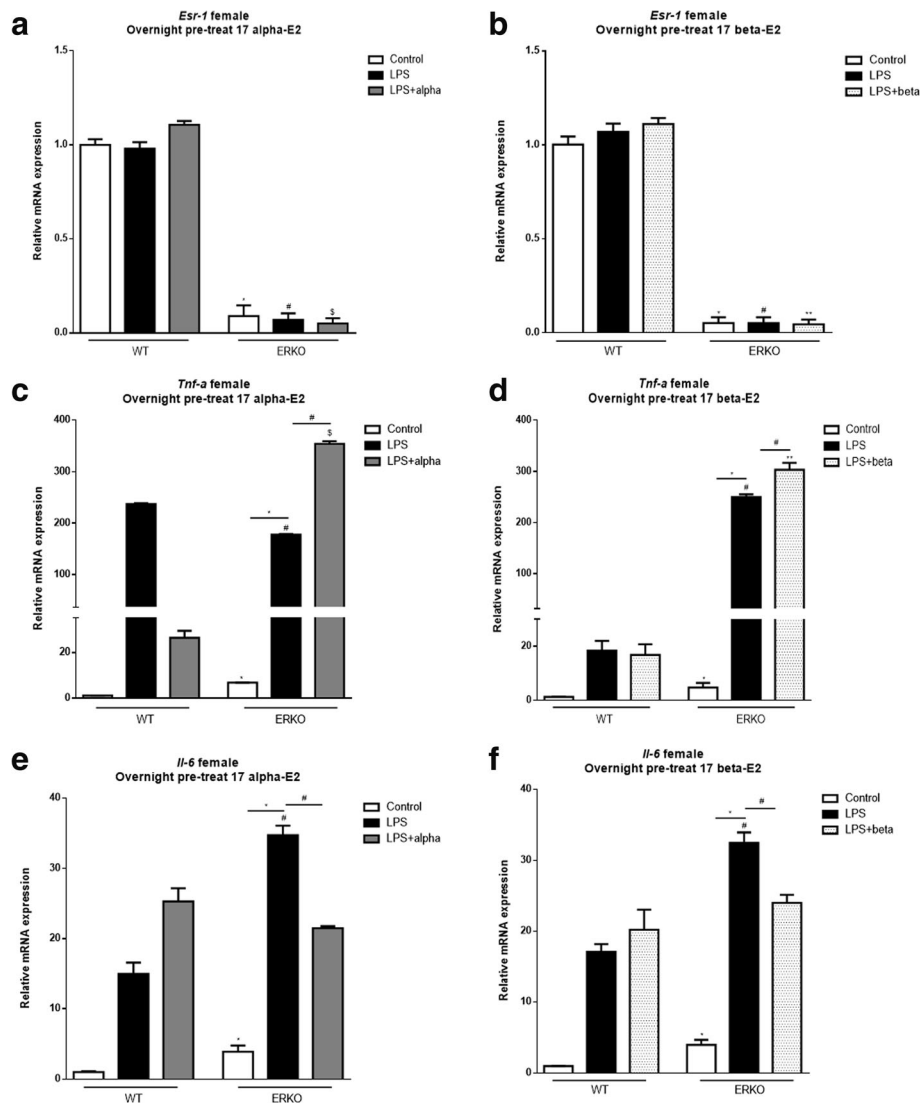


**Fig. 2** Effects of 17  $\alpha$ -E2 and 17  $\beta$ -E2 on mouse embryonic fibroblast (MEF) cells derived from C57BL/6J WT and ERKO male mice pre-treated overnight with 17  $\alpha$ -E2 (A, C, and E), or 17  $\beta$ -E2 (B, D, and E) for 12 h, followed by 2 h LPS. Relative mRNA expression of *Esr-1* (a–b), *Tnf- $\alpha$*  (c–d), and *Il-6* (e–f). Data are presented as mean  $\pm$  SEM values. Asterisk indicates  $P < 0.05$   $\times$  control group (C). Pound indicates  $P < 0.05$   $\times$  LPS group. Dollar sign indicates  $P < 0.05$   $\times$  LPS + 17  $\alpha$ -E2 group. Two asterisks indicates  $P < 0.05$   $\times$  LPS + 17  $\beta$ -E2 group ( $n = 3$  independent rounds of cells)

### 17 $\alpha$ -E2 and 17 $\beta$ -E2 attenuated LPS-induced inflammatory markers in primary pre-adipocytes derived from male and female mice

Since the effects of 17  $\alpha$ -E2 to modulate inflammatory markers were more pronounced in the short-term exposure in MEF cells, we further investigated its effects on primary pre-adipocytes using this protocol. Primary pre-adipocytes were extracted from C57BL/6J male and

female mice; at baseline, male cells had higher expression of *Tnf- $\alpha$*  and *Il-6* when compared to females (Fig. 4a, b). 17  $\beta$ -E2 reduced LPS-induced inflammatory markers in both male and female cells. Following LPS exposure, 17  $\alpha$ -E2 decreased *Tnf- $\alpha$*  expression in male but not in female cells (Fig. 4a). Therefore, in a more developed model of adipose tissues (primary pre-adipocyte cells), 17  $\alpha$ -E2 was able to reduce *Il-6* in cells derived from both sexes, but it



**Fig. 3** Effects of 17  $\alpha$ -E2 and 17  $\beta$ -E2 on mouse embryonic fibroblast (MEF) cells derived from C57BL/6J WT and ERKO female mice pre-treated overnight with 17  $\alpha$ -E2 (A, C, and E), or 17  $\beta$ -E2 (B, D and E) for 12 h, followed by 2 h LPS. Relative mRNA expression of *Esr-1* (a–b), *Tnf- $\alpha$*  (c–d), and *Il-6* (e–f). Data were presented as mean  $\pm$  SEM values. Asterisk indicates  $P < 0.05$   $\times$  control group (C). Pound indicates  $P < 0.05$   $\times$  LPS group. Dollar sign indicates  $P < 0.05$   $\times$  LPS + 17  $\alpha$ -E2 group. Two asterisks indicates  $P < 0.05$   $\times$  LPS + 17  $\beta$ -E2 group ( $n = 3$  independent rounds of cells)

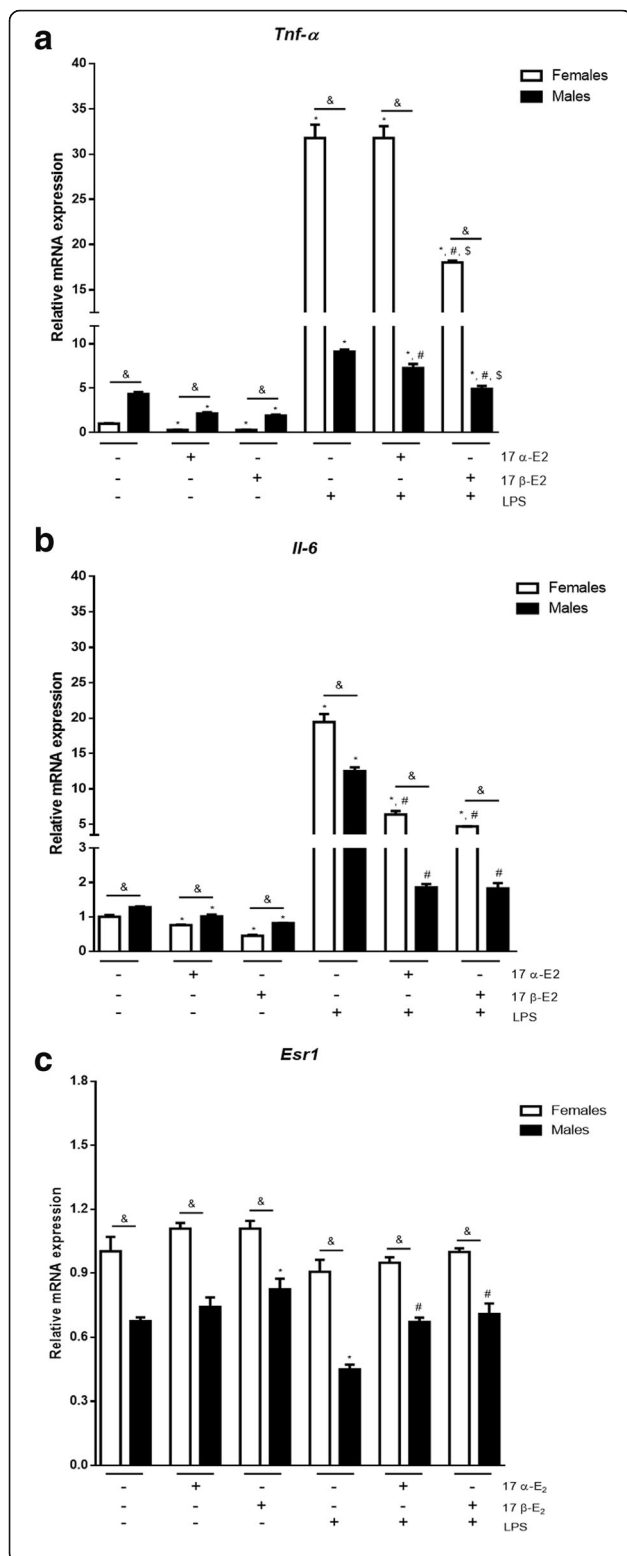
decreased *Tnf- $\alpha$*  only in male cells. Male cells presented lower levels of *Esr1* expression than female cells (Fig. 4c); consistent with our previous ERKO MEF data, this suggests 17  $\alpha$ -E2 might activate other ERs to reduce inflammation in males.

#### 17 $\alpha$ -E2 and 17 $\beta$ -E2 attenuated LPS-induced inflammatory markers in differentiated 3T3-L1 adipocytes in an ER $\alpha$ -dependent manner

In 3T3-L1 fully differentiated adipocytes, we confirmed that the treatments with LPS and E2s were not altering the viability of the cells (Additional file 1: Figure S1a, b). Consistent with our previous results, LPS treatment increased mRNA expression of *Tnf- $\alpha$*  and *Il-6*, while

both E2s decreased LPS-induced *Tnf- $\alpha$*  and *Il-6* expression (Fig. 5a, b). To begin to assess if this was unique to these two inflammatory markers, we also probed for *Nfkb1* and *Rela*, additional inflammatory markers within the NF $\kappa$ B family. Consistently, we found that E2s reduced expression of these markers (Fig. 5c, d). Additionally, both E2s increased *Il-4* and *Il-6ra* mRNA, markers of anti-inflammatory pathway induction (Fig. 5e, f).

Since the ERKO mouse lacks *Esr-1* gene expression in all tissues from the beginning of its embryonic development, we repeated our study by selectively knocking down *Esr-1* from fully differentiated adipocytes. Fully differentiated 3T3-L1 adipocytes were transfected with specific siRNA for *Esr-1*, which reduced *Esr-1* mRNA expression



**Fig. 4** Effects of 17  $\alpha$ -E<sub>2</sub> and 17  $\beta$ -E<sub>2</sub> on modulation of LPS-induced inflammatory markers in primary pre-adipocyte cells derived from C57BL/6J female and male mice. Cells were pre-treated with E<sub>2</sub>s for 1 h, followed by 2 h LPS treatment. Relative mRNA expression of *Tnf- $\alpha$*  (a), *Il-6* (b), and *Esr1* (c). Data are presented as mean  $\pm$  SEM values. Asterisk indicates  $P < 0.05$  compared to control group (C). Pound indicates  $P < 0.05 \times$  LPS group. Dollar sign indicates  $P < 0.05 \times$  LPS + 17  $\alpha$ -E<sub>2</sub> group. Ampersand indicates  $P < 0.05 \times$  females. ( $n = 3$  independent rounds of cells)

and protein (Additional file 2: Figure S2). Consistent with our hypothesis, knocking down *Esr1* resulted in higher levels of *Tnf- $\alpha$*  and *Il-6* in all groups. Furthermore, following knockdown of ER $\alpha$ , E<sub>2</sub>s were not able to decrease markers of inflammation to the same level (Fig. 6a–d).

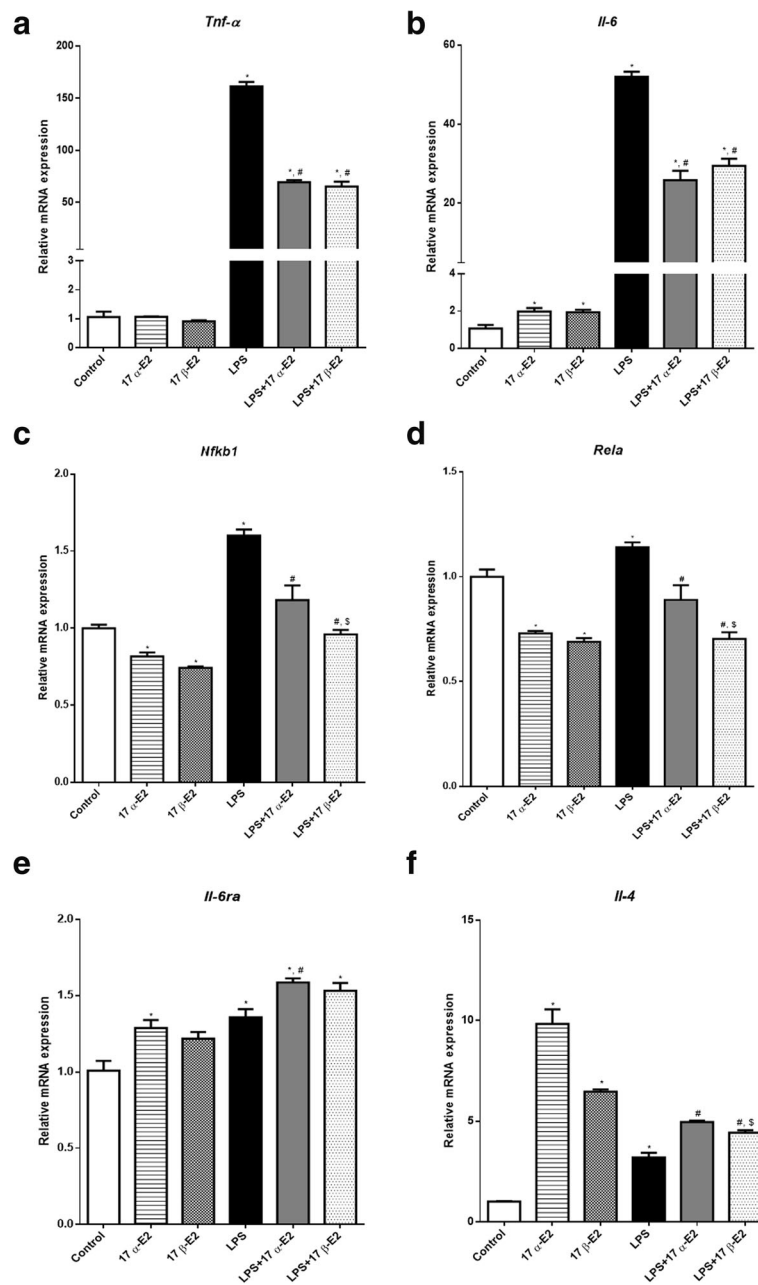
#### 17 $\alpha$ -E<sub>2</sub> and 17 $\beta$ -E<sub>2</sub> attenuated LPS-induced inflammatory markers through decreased NF $\kappa$ B-p65 and increased ER $\alpha$ protein expression

When stimulated, NF $\kappa$ B-p65 translocates to the nucleus and initiates the transcription of pro-inflammatory genes. To begin to investigate the mechanisms involved in E<sub>2</sub>-mediated reductions in inflammation, nuclear and cytoplasmic p65 protein levels were determined. Consistent with previous reports, LPS increased nuclear translocation of p65; however, here, we provide data suggesting *neither* isoform of E<sub>2</sub> influenced translocation (Fig. 7a). Importantly, however, we did find that total protein levels of p65 were suppressed by both E<sub>2</sub>s (Fig. 7b), which was further demonstrated by immunofluorescence (Fig. 7c). Interestingly, LPS decreased ER $\alpha$  protein expression, whereas both estrogens prevented LPS-mediated decreases in ER $\alpha$  protein expression (Fig. 7d, e).

#### Discussion

There is epidemiological evidence suggesting that estrogens protect against the development of chronic inflammatory diseases. This is further supported by the fact that following menopause, when circulating estrogens diminish, there is a concomitant increase in pro-inflammatory cytokines [8]. 17 Beta-estradiol (17  $\beta$ -E<sub>2</sub>) has been well established as one of the estrogens that is responsible for mediating these anti-inflammatory effects [38–40], and this may be therapeutically important because both systemic inflammation, as well as inflammation within adipose tissues, mediates many of the comorbidities associated with obesity [3, 4, 14]. Critically, there are data demonstrating that 17  $\beta$ -E<sub>2</sub> decreases inflammation directly within adipose tissues [41, 42].

17 Alpha-estradiol (17  $\alpha$ -E<sub>2</sub>) is a natural, non-feminizing isomer of 17  $\beta$ -E<sub>2</sub> [15, 20], and recently, there have been reports that 17  $\alpha$ -E<sub>2</sub> reduces inflammation in aged male mice [20]. Therefore, since 17  $\alpha$ -E<sub>2</sub> is non-feminizing, it is important to determine if this could be used as an anti-inflammatory agent that would provide benefit without

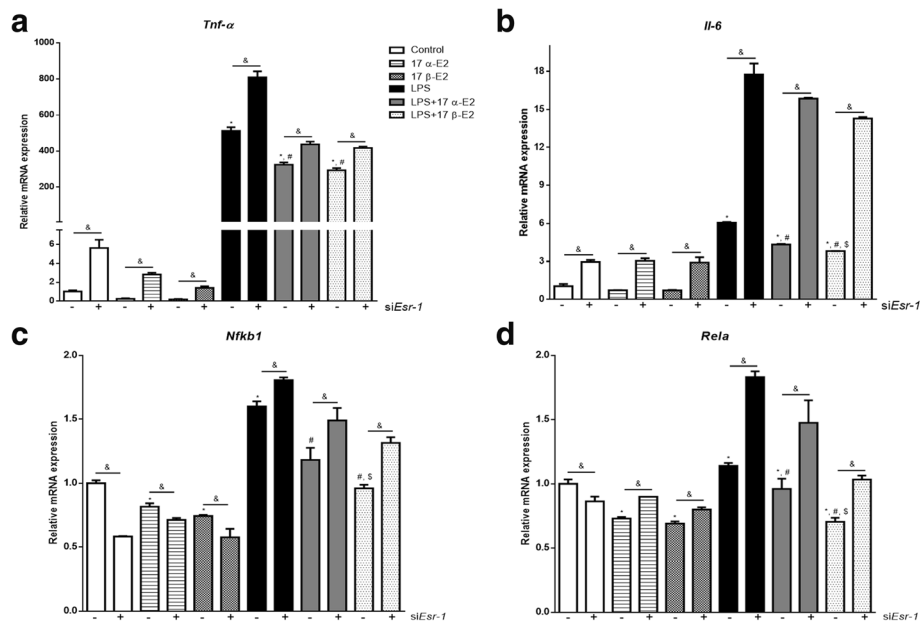


**Fig. 5** Effects of 17 α-E2 and 17 β-E2 on modulation of inflammatory markers in 3T3-L1 differentiated cells. Relative mRNA expression of *Tnf-α* (a), *Il-6* (b), *Nfkb1* (c), *Rela* (d), *Il-6ra* (e), and *Il-4* (f). Data are presented as mean ± SEM values. Asterisk indicates  $P < 0.05$  compared to control group (C). Pound indicates  $P < 0.05 \times$  LPS group. Dollar sign indicates  $P < 0.05 \times$  LPS + 17 α-E2 group. ( $n = 3$  independent rounds of cells)

causing the negative/secondary effects of estrogen supplementation, such as uterine or breast cancer [27–30]. Here we extend our knowledge of the role of 17 α-E2 in modulating inflammation by directly looking at its impact in adipocyte-like cells. Our data support previous findings with respect to 17 α-E2's ability to suppress inflammation within these tissues [20]. Additionally, we found that there may be a sexually dimorphic effect of 17 α-E2, with males being more sensitive to its effects.

We and others have reported an important role for ERα in modulating inflammatory responses in various tissues [9, 42]. Additionally, we have previously demonstrated that ERα is the predominant ER in the adipose tissue, and there are studies suggesting that ERα polymorphisms lead to adipose tissue accumulation, increased insulin resistance, and inflammation [10]. When we knocked down ERα expression in 3T3-L1 adipocytes, levels of inflammatory markers significantly increased. These data suggest the





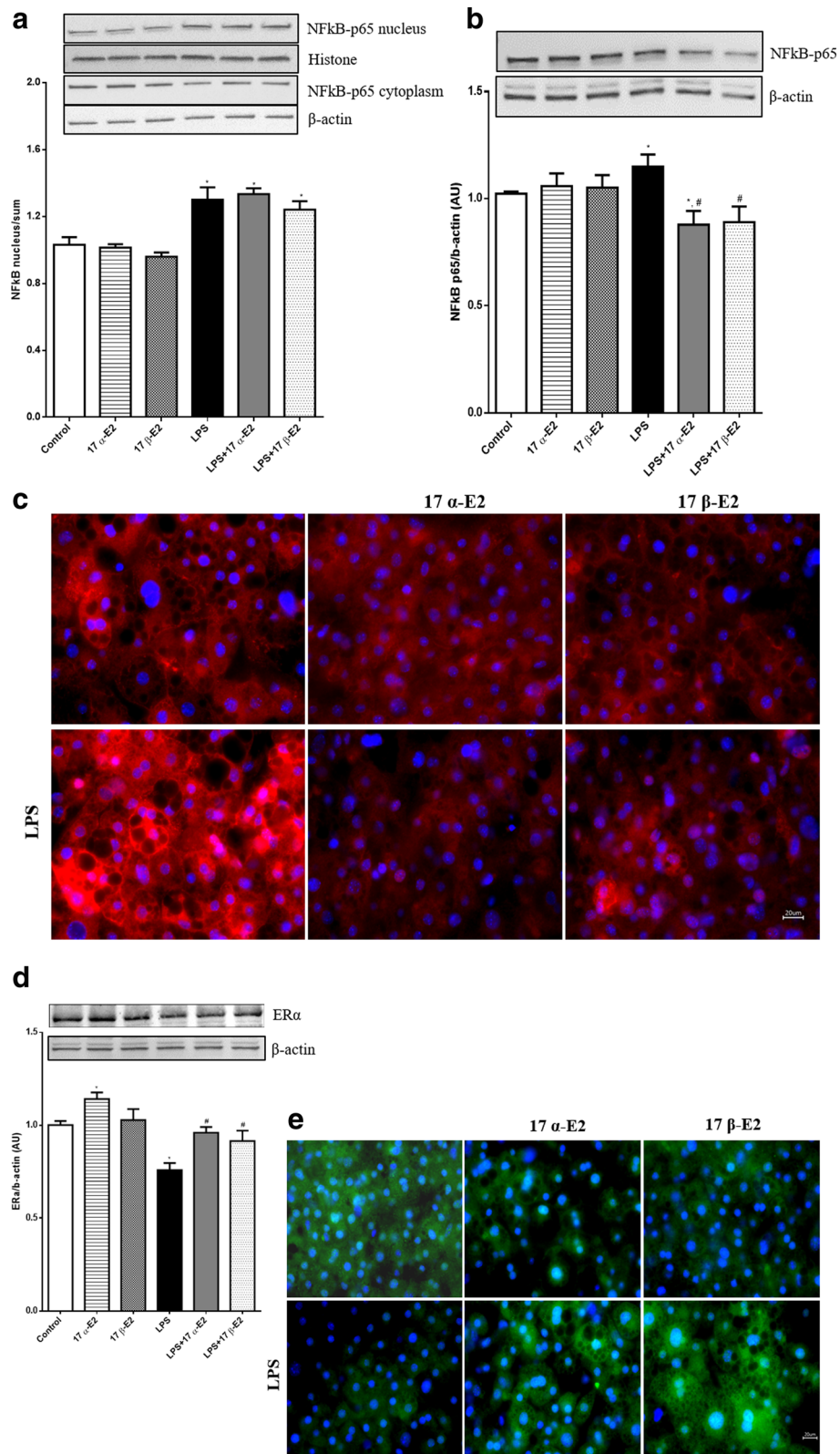
**Fig. 6** Effects of *Esr1* silencing on inflammatory markers gene expression in differentiated 3T3-L1 adipocytes. *Esr1* gene was silenced using siRNA, and cells were collected 72 h after silencing. Relative mRNA expression of *Tnf- $\alpha$*  (**a**), *Il-6* (**b**), *Nfkb1* (**c**), and *Rela* (**d**). Data are presented as mean  $\pm$  SEM values. Asterisk indicates  $P < 0.05$  compared to control group (C). Pound indicates  $P < 0.05 \times$  LPS group. Dollar sign indicates  $P < 0.05 \times$  LPS + 17  $\alpha$ -E2 group. Ampersand indicates  $P < 0.05 \times$  siRNA group. ( $n = 3$  independent rounds of cells)

ability of 17  $\alpha$ -E2 to decrease markers of inflammation depends on ER $\alpha$ . The importance of ER $\alpha$  was further substantiated by our finding that LPS both suppresses the expression of ER $\alpha$  and induces inflammation, suggesting that one of the mechanisms by which inflammation is induced by LPS is through suppression of ER $\alpha$ . Importantly, it appears there is a sexual dimorphism regarding which ER mediates 17  $\alpha$ -E2's effects on inflammatory markers. In contrast to what appears to be true for female cells, in males, there may be a different mechanism as it appears that ERs other than ER $\alpha$  may modulate 17  $\alpha$ -E2's effects, such as ER $\beta$  and GPER30 (Additional file 3: Figure S3 and Additional file 4: Figure S4).

We have not specifically tested competitive binding of the ERs following exposure to differing E2s; however, reports indicate that 17  $\alpha$ -E2 and 17  $\beta$ -E2 possess different affinities for ERs. According to Edwards and McGuire (1980) [43], there are variations in 17  $\alpha$ -E2's relative binding affinity to ERs that could range from as low as 1% of 17  $\beta$ -E2 in rat uterus to values reaching 90% in mouse uterus. Other investigators have found diverse affinities, as well: Kuiper et al. (1997) [44] reported an affinity of 17  $\alpha$ -E2 to ER $\alpha$  of 58% of the relative affinity of 17  $\beta$ -E2, and 11% to ER $\beta$ , while Torand-Allerand et al. (2005) [26] reported an affinity of 17  $\alpha$ -E2 binding to human recombinant ER $\alpha$  and ER $\beta$  of 51 and 64% compared to 17  $\beta$ -E2, respectively. Kaur et al. (2015) [45] indicated an affinity of 17  $\alpha$ -E2 to ER $\alpha$  to be 40-times lower than 17  $\beta$ -E2. These reports suggest that in an environment where both E2s

are present (as is the case in humans and mice in vivo), competition for ER binding may occur; however, since 17  $\beta$ -E2 has higher binding affinity to both ERs, it tends to exert more biological activity. We suggest there may be physiological benefit in applying 17  $\alpha$ -E2 to reduce inflammatory markers when the levels of 17  $\beta$ -E2 are reduced, such as in males and postmenopausal (post-oophorectomy) females.

NF $\kappa$ B (NF $\kappa$ B) is included within the inflammatory cascade. Its inactive form resides in the cytoplasm, bound to I $\kappa$ B. When it is activated by a stimulus, I $\kappa$ B is phosphorylated by I $\kappa$ K and dissociates from NF $\kappa$ B. NF $\kappa$ B then heterodimerizes and translocates to the nucleus, where it binds and modulates expression of target genes such as *Tnf- $\alpha$*  and *Il-6*. Estrogen receptors (ERs) can repress NF $\kappa$ B activity through diverse mechanisms. In the study of Quaedackers et al. (2001) [46], the osteoblastic cell line U2-OS was transfected with a NF $\kappa$ B reporter in combination with an expression vector encoding ER $\alpha$  or ER $\beta$ . Co-transfection with ER $\alpha$  resulted in repression of the TNF $\alpha$ -induced transcriptional activity of NF $\kappa$ B; however, co-transfection of ER $\beta$  resulted in upregulation of TNF $\alpha$ -induced NF $\kappa$ B activity in the absence of a ligand, leading to upregulation of NF $\kappa$ B-regulated genes, which suggests that the hormone-independent ER repression of NF $\kappa$ B is receptor-specific to ER $\alpha$ . Sun et al. (1998) [47] transfected HeLa-ER $^{+}$  cells with a construct containing the *Il-6* promoter linked to the luciferase gene NF $\kappa$ B p65 or NF $\kappa$ B p50 with I $\kappa$ B $\alpha$  or control expression vector. The transfection of



**Fig. 7** (See legend on next page.)

(See figure on previous page.)

**Fig. 7** Effects of 17  $\alpha$ -E2 and 17  $\beta$ -E2 on p65 and ER $\alpha$  protein expression in 3T3-L1 differentiated cells. **a** Nuclear and cytoplasmic fractions were extracted for Western blotting (WB) detection of p65. **b** Total protein was extracted for WB detection of p65. **c** Microscopy images of immunofluorescence labeling of p65 (red) in 3T3-L1 cells. Nuclei were stained with DAPI. **d** Total protein was extracted for WB detection of ER $\alpha$ . **e** Microscopy images of immunofluorescence labeling of ER $\alpha$  (green) in 3T3-L1 cells. Nuclei were stained with DAPI. Data are presented as mean  $\pm$  SEM values. Asterisk indicates  $P < 0.05$  compared to control group (C). Pound indicates  $P < 0.05 \times$  LPS group. ( $n = 4$  independent rounds of cells for WB, and  $n = 3$  independent rounds of cells for immunofluorescence)

p50 or p65 vectors alone induced IL-6 promoter activation. However, treatment of cells with estrogens (E2) abolished the IL-6 promoter activity, which was similar to the transfection of p50 and p65 with I $\kappa$ B $\alpha$  construct, which completely abrogated the NF $\kappa$ B-mediated IL-6 promoter activity. When cells were stimulated with phorbol ester (PMA), the levels of cytosolic I $\kappa$ B $\alpha$  protein were hugely decreased, while when co-treated with E2 and PMB, the PMA-induced I $\kappa$ B $\alpha$  protein degradation was inhibited. One possible explanation is that E2 stabilizes I $\kappa$ B $\alpha$  protein by interfering with its phosphorylation or ubiquitination, inhibiting its proteolysis. There was no data in this study regarding which ER was transfected to HeLa cells that was mediating E2's effects.

In the review of Kalaitzidis and Gilmore (2005) [48], the authors discuss that ER $\alpha$ , in an estrogen-dependent manner, inhibits NF $\kappa$ B activity in various cell lines, including Hep2, MCF-7, U2-OS, HeLa, F9, 293, and U937, and that this can occur by various mechanisms. One of the mechanisms they suggest is direct binding of ER $\alpha$  to p50/p52 and RelA/c-Rel heterodimers in the nucleus, which in turn blocks the binding of NF $\kappa$ B to the promoter region of target genes, such as the IL-6 promoter, preventing their transcription. Moreover, E2 binding to ER $\alpha$  can affect I $\kappa$ B processing possibly through E2-mediated inhibition of I $\kappa$ K, which prevents I $\kappa$ B phosphorylation, degradation, and NF $\kappa$ B translocation to the nucleus. ER $\alpha$  can also affect the ability of NF $\kappa$ B to interact with coactivators, either by direct competition or through disruption of the ability of NF $\kappa$ B to bind with coactivators, including Bcl-3, p300, and CBP among others.

The concentration of E2 is important for its ability to modulate NF $\kappa$ B; according to the literature, E2 concentrations equal to or above 100 pM are necessary to inhibit NF $\kappa$ B activation [8]. Additionally, in vitro studies have demonstrated that high concentrations of 17  $\beta$ -E2 block LPS-induced NF $\kappa$ B-p65 DNA binding and transcriptional activity by preventing its nuclear translocation [49, 50]. This is important because in our study, we used an elevated concentration (10  $\mu$ M) of both E2s, but they failed to prevent the translocation of the p65 subunit of NF $\kappa$ B to the nucleus. We attribute the differences to differing cell types, as well as the timing and dosage of LPS/E2 treatments. Although E2s could not prevent the translocation of p65 to the nucleus, we did observe a reduction in p65 protein levels in cells, suggesting that

reductions in the amount of p65 protein available for nuclear translocation may underlie the reduced transcription of pro-inflammatory genes.

It is important to note that the objective of the experiments described here was to directly compare the same concentrations of the different E2s in order to discern differences in their ability to modulate inflammatory markers. The concentration used in these studies was equivalent to the pharmacological dose of 17  $\beta$ -E2 used in vivo [51, 52]. Currently, the literature is unclear as to whether the concentrations of these estrogenic hormones differ, and more specifically, if they differ by tissue type. Future studies are important to determine circulating and tissue specific levels of these hormones, as well as to test physiological levels of each estrogen to begin to characterize their similarities and differences. This will be extremely important to be done for both sexes, as we predict the tissue levels of these estrogens may differ by sex. This is an emerging field. While we believe we have begun to understand how these hormones function to reduce inflammation, more work is required to mechanistically understand their function at the tissue level.

## Conclusions

In conclusion, we provide new evidence demonstrating an anti-inflammatory role for 17  $\alpha$ -E2 in adipocytes, which appears to require ER $\alpha$  in females, but not in males. Furthermore, our data suggest a potential mechanism by which 17  $\alpha$ -E2 provides an anti-inflammatory effect which is by reducing NF $\kappa$ B p65 subunit transcription and translation, which, in turn, decreases transcription of inflammatory markers such as *Tnf- $\alpha$*  and *Il-6*. These findings are important because there is increasing interest in attaining the clinical benefits of estrogen compounds while avoiding adverse side effects. Since 17  $\alpha$ -E2 is a non-feminizing estrogen, its use may not cause the potential deleterious effects of feminizing estrogens. As such, our study suggests that this estrogen may be pharmacologically relevant for treatment of inflammatory diseases in males, as well as in postmenopausal females.

## Additional files

**Additional file 1: Figure S1.** Effects of 17  $\alpha$ -E2 and 17  $\beta$ -E2 on modulation of viability of cells and lipolysis in 3T3-L1 differentiated cells. **(A)** Cell viability in % after estrogens and LPS treatments. **(B)** Oil red O staining for lipolysis in all groups. Data were presented in mean  $\pm$  SEM values. (TIFF 2622 kb)

**Additional file 2: Figure S2.** Effects of *Esr1* silencing on *Esr-1* gene and ER $\alpha$  protein expression in 3T3-L1 differentiated cells. **(A)** Relative mRNA expression of *Esr1*. **(B)** Total protein was extracted for Western blotting detection of ER $\alpha$  after 72 h of siRNA. Data were presented in mean  $\pm$  SEM values. Symbol (\*) indicates  $P < 0.05$  compared to control group (C). (&) indicates  $P < 0.05$  x siRNA group. ( $n = 3$  independent rounds of cells). (TIFF 375 kb)

**Additional file 3: Figure S3.** mRNA expression of *Esr2* **(A)** and *Gper1* **(B)** in primary pre-adipocyte cells derived from male mice. Data were presented in mean  $\pm$  SEM values. Symbol (&) indicates  $P < 0.05$  compared to WT mice. ( $n = 3$  independent rounds of cells). (TIFF 375 kb)

**Additional file 4: Figure S4.** mRNA expression of *Esr2* **(A)** and *Gper1* **(B)** in Mef cells derived from WT and ERKO male mice. Data were presented in mean  $\pm$  SEM values. Symbol (&) indicates  $P < 0.05$  compared to WT mice. ( $n = 3$  independent rounds of cells). (TIFF 239 kb)

### Funding

This material was based upon work supported by Fundação de Amparo à Pesquisa do Estado de São Paulo (FAPESP), under Grant 2015/05801–7.

### Availability of data and materials

The datasets generated during the current study are available from the corresponding author on reasonable request.

### Authors' contributions

Experiments in vitro were performed by RSS and LAF. Ex vivo experiments were performed by RSS and APF. Gene silencing was performed by LAF and RSS. Gene expression and Western blotting was performed by RSS. Immunofluorescence was performed by LAF and RSS. Statistics were performed by RSS, LAF, APF, EMC, and DJC designed and discussed the experiments and results. RSS and DJC prepared the manuscript. All authors read and approved the final manuscript.

### Ethics approval and consent to participate

Primary cells were extracted from animals according to the institutional's guidelines.

### Consent for publication

Not applicable.

### Competing interests

The authors declare that they have no competing interests

### Publisher's Note

Springer Nature remains neutral with regard to jurisdictional claims in published maps and institutional affiliations.

### Author details

<sup>1</sup>Biomedical Sciences Dept, Diabetes and Obesity Research Division, Cedars-Sinai Medical Center, 8700 Beverly Blvd, Los Angeles, CA 90048, USA. <sup>2</sup>Obesity and Comorbidities Research Center (OCRC), Institute of Biology, State University of Campinas-UNICAMP, Campinas, SP, Brazil.

Received: 25 May 2017 Accepted: 29 August 2017

Published online: 06 September 2017

### References

- Viña J, Gambini J, García-García FJ, Rodríguez-Mañas L, Borrás C. Role of oestrogens on oxidative stress and inflammation in ageing. *Horm Mol Biol Clin Investig.* 2013;16:65–72.
- Zhu L, Martinez MN, Emfinger CH, Palmisano BT, Stafford JM. Estrogen signaling prevents diet-induced hepatic insulin resistance in male mice with obesity. *Am J Physiol Endocrinol Metab.* 2014;306:E188–97.
- Greenberg AS, Obin MS. Obesity and the role of adipose tissue in inflammation and metabolism. *Am J Clin Nutr.* 2006;83:461S–5S.
- Nishimura S, Manab I, Nagai R. Adipose tissue inflammation in obesity and metabolic syndrome. *Discov Med.* 2009;8:55–60.
- Pfeilschifter J, Köditz R, Pfohl M, Schatz H. Changes in proinflammatory cytokine activity after menopause. *Endocr Rev* 2002; 23: 90-119.
- Tofovic SP. Estrogens and development of pulmonary hypertension: interaction of estradiol metabolism and pulmonary vascular disease. *J Cardiovasc Pharmacol.* 2010;56:696–708.
- Mauvais-Jarvis F, Clegg DJ, Hevener AL. The role of estrogens in control of energy balance and glucose homeostasis. *Endocr Rev.* 2013;34:309–38.
- Straub RH. The complex role of estrogens in inflammation. *Endocr Rev.* 2007;28:521–74.
- Morselli E, Fuente-Martin E, Finan B, Kim M, Frank A, Garcia-Caceres C, et al. Hypothalamic PGC-1 $\alpha$  protects against high-fat diet exposure by regulating ER $\alpha$ . *Cell Rep.* 2014;9:633–45.
- Drew BG, Hamidi H, Zhou Z, Villanueva CJ, Krum SA, Calkin AC, et al. Estrogen receptor (ER) $\alpha$ -regulated lipocalin 2 expression in adipose tissue links obesity with breast cancer progression. *J Biol Chem.* 2015;290:5566–81.
- Stein B, Yang MX. Repression of the interleukin-6 promoter by estrogen receptor is mediated by NF-kappa B and C/EBP beta. *Mol Cell Biol.* 1995;15:4971–9.
- Srivastava S, Weitzmann MN, Cenci S, Ross FP, Adler S, Pacifici R. Estrogen decreases TNF gene expression by blocking JNK activity and the resulting production of c-Jun and JunD. *J Clin Invest.* 1999;104:503–13.
- Marino M, Galluzzo P, Ascenzi P. Estrogen signaling multiple pathways to impact gene transcription. *Curr Genomics.* 2006;7:497–508.
- Monteiro R, Teixeira D, Calhau C. Estrogen signaling in metabolic inflammation. *Mediat Inflamm.* 2014;2014:615917.
- Moos WH, Dykens JA, Nohynek D, Rubinchik E, Howell N. Review of the effects of 17 $\alpha$ -estradiol in humans: a less feminizing estrogen with neuroprotective potential. *Drug Dev Res.* 2009;70:1–21.
- Toran-Allerand CD. Estrogen and the brain: beyond ER-alpha, ER-beta, and 17beta-estradiol. *Ann N Y Acad Sci.* 2005;1052:136–44.
- Schott EW, Katzman PA. Separation and estimation of 17-alpha-estradiol. *Endocrinol.* 1964;74:870–7.
- Luukkainen T, Adlercreutz H. Isolation and identification of 11-dehydro-estradiol-17a, a new type of urinary steroid, in the urine of pregnant women. *Biochim Biophys Acta.* 1965;107:579–92.
- Lippert C, Seeger H, Wallwiener D, Mueck AO. Comparison of the effects of 17alpha-ethinylestradiol and 17beta-estradiol on the proliferation of human breast cancer cells and human umbilical vein endothelial cells. *Clin Exp Obstet Gynecol* 2002; 29: 87-90.
- Stout MB, Steyn FJ, Jurczak MJ, Camporez JG, Zhu Y, Hawse JR, et al. 17 $\alpha$ -Estradiol alleviates age-related metabolic and inflammatory dysfunction in male mice without inducing feminization. *J Gerontol A Biol Med Sci.* 2017;72:3–15.
- Dulos J, Vijn P, van Doorn C, Hofstra CL, Veening-Griffioen D, de Graaf J, et al. Suppression of the inflammatory response in experimental arthritis is mediated via estrogen receptor alpha but not estrogen receptor beta. *Arthritis Res Ther.* 2010;12:R101.
- Subramanian S, Tovey M, Afentoulis M, Krogstad A, Vandenbark AA, Offner H. Ethinyl estradiol treats collagen-induced arthritis in DBA/1LacJ mice by inhibiting the production of Tnf- $\alpha$  and IL-1 $\beta$ . *Clin Immunol.* 2005;115:162–72.
- Silvestri A, Gebara O, Vitale C, Wajngarten M, Leonardo F, Ramires JA, et al. Increased levels of C-reactive protein after oral hormone replacement therapy may not be related to an increased inflammatory response. *Circulation.* 2003;107:3165–9.
- Divani AA, Luo X, Datta YH, Flaherty JD, Panoskaltis-Mortari A. Effect of oral and vaginal hormonal contraceptives on inflammatory blood biomarkers. *Mediat Inflamm.* 2015;2015:379501.
- Dykens JA, Moos WH, Howell N. Development of 17alpha-estradiol as a neuroprotective therapeutic agent: rationale and results from a phase I clinical study. *Ann N Y Acad Sci.* 2005;1052:116–35.
- Toran-Allerand CD, Tinnikov AA, Singh RJ, Nethrapalli IS. 17alpha-estradiol: a brain-active estrogen? *Endocrinology.* 2005;146:3843–50.
- Russo J, Fernandez SV, Russo PA, Fernbaugh R, Sheriff FS, Lareef HM, et al. 17-Beta-estradiol induces transformation and tumorigenesis in human breast epithelial cells. *FASEB J.* 2006;20:1622–34.
- Lumachi F, Brunello A, Maruzzo M, Basso U, Basso SM. Treatment of estrogen receptor-positive breast cancer. *Curr Med Chem.* 2013;20:596–604.
- Brinton LA, Felix AS. Menopause hormone therapy and risk of endometrial cancer. *J Steroid Biochem Mol Biol.* 2014;142:83–9.
- Kaklamani VG, Gradishar WJ. Endocrine therapy in the current management of postmenopausal estrogen receptor-positive metastatic breast cancer. *Oncologist* 2017 [Epub ahead of print].

31. Dupont S, Krust A, Gansmuller A, Dierich A, Chambon P, Mark M. Effect of single and compound knockouts of estrogen receptors alpha (ERalpha) and beta (ERbeta) on mouse reproductive phenotypes. *Development* (Cambridge, England). 2000;127:4277–91.
32. Kim M, Neinast MD, Frank AP, Sun K, Park J, Zehr JA, et al. ER $\alpha$  upregulates Phd3 to ameliorate HIF-1 induced fibrosis and inflammation in adipose tissue. *Mol Metab*. 2014 Jun 7;3(6):642–51.
33. Zebisch K, Voigt V, Wabitsch M, Brandsch M. Protocol for effective differentiation of 3T3-L1 cells to adipocytes. *Anal Biochem*. 2012;425:88–90.
34. Desjardins P, Conklin D. NanoDrop microvolume quantitation of nucleic acids. *J Vis Exp*. 2010;22:2565.
35. Silva JL, Giannocco G, Furuya DT, Lima GA, Moraes PA, Nachev S, et al. NK-kappaB, MEF2A, MEF2D and HIF1- $\alpha$  involvement on insulin- and contraction-induced regulation of GLUT4 gene expression in soleus muscle. *Mol Cell Endocrinol*. 2005;240:82–93.
36. Cumming G, Fidler F, Vaux DL. Error bars in experimental biology. *J Cell Biol*. 2007;177:7–11.
37. Lasic SE. The problem of pseudoreplication in neuroscientific studies: is it affecting your analysis? *BMC Neurosci*. 2010;11:5.
38. Hsu SM, Chen YC, Jiang MC. 17 Beta-estradiol inhibits tumor necrosis factor- $\alpha$ -induced nuclear factor- $\kappa$ B activation by increasing nuclear factor- $\kappa$ B p105 level in MCF-7 breast cancer cells. *Biochem Biophys Res Commun*. 2000;279:47–52.
39. Pansiot J, Mairesse J, Baud O. Protecting the developing brain by 17 $\beta$ -estradiol. *Oncotarget* 2017 [Epub ahead of print].
40. Rodrigues MF, Ferreira FC, Silva-Magosso NS, Barbosa MR, Souza MV, Domingos MM et al. Effects of resistance training and estrogen replacement on adipose tissue inflammation in ovariectomized rats. *Appl Physiol Nutr Metab* 2017 [Epub ahead of print].
41. Stubbins RE, Najjar K, Holcomb VB, Hong J, Núñez NP. Estrogen alters adipocyte biology and protects female mice from adipocyte inflammation and insulin resistance. *Diabetes Obes Metab*. 2012;14:58–66.
42. Davis KE, D Neinast M, Sun K, M Skiles W, D Bills J, A Zehr J, et al. The sexually dimorphic role of adipose and adipocyte estrogen receptors in modulating adipose tissue expansion, inflammation, and fibrosis. *Mol Met*. 2013;2:227–42.
43. Edwards DP, McGuire WL. 17 Alpha-Estradiol is a biologically active estrogen in human breast cancer cells in tissue culture. *Endocrinology*. 1980;107:884–91.
44. Kuiper GG, Carlsson B, Grandien K, Enmark E, Häggblad J, Nilsson S, et al. Comparison of the ligand binding specificity and transcript tissue distribution of estrogen receptors alpha and beta. *Endocrinology*. 1997;138:863–70.
45. Kaur SP, Bansal S, Chopra K. 17 $\alpha$ -Estradiol: a candidate neuroserm and non-feminizing estrogen for postmenopausal neuronal complications. *Steroids*. 2015;96:7–15.
46. Quaedackers ME, Van Den Brink CE, Wissink S, Schreurs RH, Gustafsson JA, Van Der Saag PT, et al. 4-Hydroxytamoxifen trans-represses nuclear factor- $\kappa$ B activity in human osteoblastic U2-OS cells through estrogen receptor (ER) $\alpha$ , and not through ER beta. *Endocrinology*. 2001;142:1156–66.
47. Sun WH, Keller ET, Stebler BS, Ershler WB. Estrogen inhibits phorbol ester-induced I kappa B alpha transcription and protein degradation. *Biochem Biophys Res Commun*. 1998;244:691–5.
48. Kalaitzidis D, Gilmore TD. Transcription factor cross-talk: the estrogen receptor and NF- $\kappa$ B. *Trends Endocrinol Metab*. 2005;16:46–52.
49. Dodel RC, Du Y, Bales KR, Gao F, Paul SM. Sodium salicylate and 17beta-estradiol attenuate nuclear transcription factor NF- $\kappa$ B translocation in cultured rat astroglial cultures following exposure to amyloid A beta(1–40) and lipopolysaccharides. *J Neurochem*. 1999;73:1453–60.
50. Ghisletti S, Meda C, Maggi A, Vegeto E. 17beta-Estradiol inhibits inflammatory gene expression by controlling NF- $\kappa$ B intracellular localization. *Mol Cell Biol*. 2005;25:2957–68.
51. Adams KL, Maxson MM, Mellander L, Westerink RH, Ewing AG. Estradiol inhibits depolarization-evoked exocytosis in PC12 cells via N-type voltage-gated calcium channels. *Cell Mol Neurobiol*. 2010;30:1235–42.
52. Ma YL, Qin P, Li Y, Shen L, Wang SQ, Dong HL, et al. The effects of different doses of estradiol (E2) on cerebral ischemia in an in vitro model of oxygen and glucose deprivations and reperfusion and a rat model of middle carotid artery occlusion. *BMC Neurosci*. 2013;14:118.

Submit your next manuscript to BioMed Central and we will help you at every step:

- We accept pre-submission inquiries
- Our selector tool helps you to find the most relevant journal
- We provide round the clock customer support
- Convenient online submission
- Thorough peer review
- Inclusion in PubMed and all major indexing services
- Maximum visibility for your research

Submit your manuscript at  
[www.biomedcentral.com/submit](http://www.biomedcentral.com/submit)

