

Complete mitochondrial genome of *Callipogon relictus* Semenov (Coleoptera: Cerambycidae): a natural monument and endangered species in Korea

Jongok Lim^a, Dong-Keun Yi^b, Young Ho Kim^c, Wonhoon Lee^d, Sora Kim^{e,f}, Jung-Hoon Kang^g and Il-Kwon Kim^a

^aDivision of Forest Biodiversity, Korea National Arboretum, Pocheon, Korea; ^bKorea Research Institute of Bioscience and Biotechnology, Daejeon, Korea; ^cDepartment of Applied Biology, Kyungpook National University, Sangju, Korea; ^dDepartment of Plant Medicine and Institute of Agriculture & Life Science, Gyeongsang National University, Jinju, Korea; ^eDepartment of Agricultural Biotechnology, Laboratory of Insect Biosystematics, Seoul National University, Seoul, Korea; ^fResearch Institute of Agriculture and Life Sciences, Seoul National University, Seoul, Korea; ^gNatural Heritage Center, National Research Institute of Cultural Heritage, Daejeon, Korea

ABSTRACT

In the present study, we report the first complete mitochondrial DNA genome of the genus *Callipogon* based on *C. relictus*, a natural monument and endangered species in South Korea. The mitogenome is 15,742 base pairs with 13 protein coding genes (PCGs), two rRNAs, 22 tRNAs, and a 1033 bp long AT-rich region. The overall base composition was 67.3% AT and 32.7% GC. Among 13 PCGs, seven genes (*Nad2*, *Atp8*, *Atp6*, *Nad4L*, *Nad6*, *Cob*, *Nad1*) harbour the typical stop codon TAA or TAG, whereas remaining five genes terminate with T. Interestingly, *Cox3* employs AGA as the termination codon.

ARTICLE HISTORY

Received 14 August 2017
Accepted 24 August 2017

KEYWORDS



Korean natural monument; endangered species; mitogenome; longhorn beetle; *Callipogon relictus*

Callipogon is a genus with a disjunct distribution: one species, *C. relictus*, in Northeast Asia and seven in Central America (Cherepanov 1988; Lim, Kim, et al. 2013; Lim, Jung, et al. 2013). *Callipogon relictus* was designated as a Korean natural monument in 1968 and an endangered species in 2012 for a sharp decline of the population in Korea (Lim, Jung, et al. 2013).

A male and a female were found in Gwangneung forest, Korea in 2014 and 2015, respectively, and stored in absolute ETOH at -80°C . The voucher specimens (accession no. NHC-A-2015-054, NHC-A-2016-120) are deposited in the Natural Heritage Center, Korea. We extracted genomic DNA from the bodies with DNA extraction kit (Takara, Japan). The extracted DNA sample was analysed using Illumina MiSeq. A total of 24,202,986 reads were analysed to generate 3,654,650,886 base pairs of sequence and assembled in Geneious 10.0.4 (Kearse et al. 2012). A total of 50,128 reads were assembled with an average coverage of 478.4X. Phylogenetic analysis was performed based on the nucleotide sequences of the 13 PCGs. Secondary structure prediction of tRNAs except for two tRNAs (tRNA^{Asn} and tRNA^{Ser}), was done in Lowe Lab tRNAscan-SE Search Server (Schattner et al. 2005) and the secondary structure prediction of tRNA^{Asn} in Bioinformatics Web Server for RNA (<http://rtools.cbrc.jp>).

The *C. relictus* complete mitogenome, 15,742 bp, has 37 individual genes (13 protein coding genes (PCGs), two ribosomal RNAs, 22 tRNAs, and a 1033 bp long A + T rich region). The overall base composition was 67.3% AT and 32.7% GC.

The 13 PCGs are similar to other coleopteran insects, and 12 genes begin with typical ATN codon: four (*Atp6*, *Cox3*, *Nad4L*, *Cob*) start with ATG, three (*Nad2*, *Nad3*, *Nad1*) with ATT, two (*Cox2*, *Nad6*) with ATC and three (*Atp8*, *Nad5*, *Nad4*) with ATA. ACC was observed as an atypical start codon for *Cox1*. Among 13 PCGs, seven genes (*Nad2*, *Atp8*, *Atp6*, *Nad4L*, *Nad6*, *Cob*, *Nad1*) harbour the typical stop codon TAA or TAG, whereas remaining five genes terminate with T. Interestingly, *Cox3* employs AGA as the termination codon. Taken together, one gene (*Cox1*) starts atypical codon, and 6 genes (*Cox1*, *Cox2*, *Cox3*, *Nad3*, *Nad5*, *Nad4*) possess atypical stop codon. The mitogenome of *C. relictus* has 22 tRNA genes: two iso-types for *Leu* and *Ser*, one type for the other 18 types of amino acid. With the exception of tRNA^{Ser}, the dihydrouridine arm of which forms a simple loop, 21 tRNAs can be folded into the typical clover-leaf structure. While the order of tRNA^{Ala} and tRNA^{Arg} among the ARNSEF (*Ala*, *Arg*, *Asn*, *Ser*, *Glu*, *Phe*) cluster between the *Nad3* and *Nad5* genes is reversed in some chrysomelid beetles and aquatic elateriform beetles (Timmermans and Vogler 2012; Timmermans et al. 2015). The lengths of 16S and 12S rRNA genes are 1287 and 817 bp, respectively, which are well within the range of the respective genes detected in the coleopteran mitochondrial rRNAs (Kim et al. 2009; Chiu et al. 2016). A large non-coding AT-rich region (79.6%) of 1033 nucleotides is located between 12S rRNA and tRNA^{Ile}. Although certain repetitive sequences were not investigated in AT-rich region in

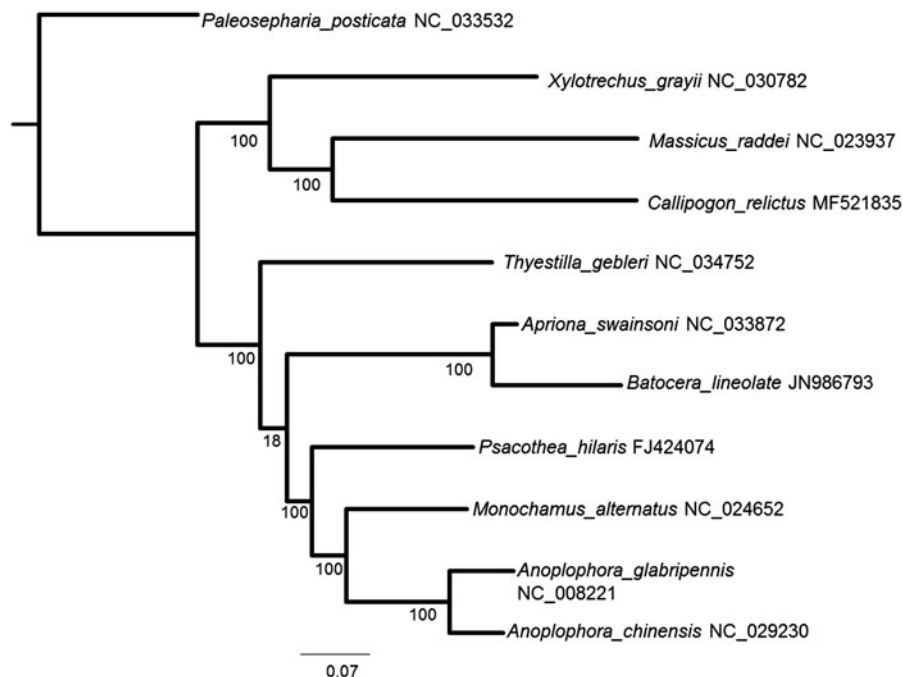
CONTACT Il-Kwon Kim  ilkwons91@korea.kr  Division of Forest Biodiversity, Korea National Arboretum, Pocheon, Gyeonggi Province 11186, Republic of Korea

© 2017 Korea National Arboretum. Published by Informa UK Limited, trading as Taylor & Francis Group.

This is an Open Access article distributed under the terms of the Creative Commons Attribution License (<http://creativecommons.org/licenses/by/4.0/>), which permits unrestricted use, distribution, and reproduction in any medium, provided the original work is properly cited.

Table 1. Mitochondrial genome of *Callipogon relictus*.

Gene	Direction	Location	Length	Anticodon	Codon	
					Start	Stop
tRNA ^{Ile}	F	1–67	67	GAT (29–31)		
tRNA ^{Gln}	R	70–140	71	CAA (108–110)		
tRNA ^{Met}	F	143–211	69	CAT (173–175)		
<i>Nad2</i>	F	212–1225	1014		ATT	TAA
tRNA ^{Trp}	F	1224–1291	68	TCA (1258–1260)		
tRNA ^{Cys}	R	1292–1357	66	GCA (1326–1328)		
tRNA ^{Tyr}	R	1358–1422	65	GTA (1391–1393)		
<i>Cox1</i>	F	1415–2957	1513		ACC	T
tRNA ^{Leu}	F	2958–3022	65	TAA (2987–2989)		
<i>Cox2</i>	F	3023–3707	685		ATC	T
tRNA ^{Lys}	F	3708–3777	70	TTT (3737–3739)		
tRNA ^{Asp}	F	3778–3844	67	GTC (3809–3811)		
<i>Atp8</i>	F	3845–4000	156		ATA	TAA
<i>Atp6</i>	F	3994–4665	672		ATG	TAA
<i>Cox3</i>	F	4665–5453	786		ATG	AGA
tRNA ^{Gly}	F	5451–5515	65	TCC (5482–5484)		
<i>Nad3</i>	F	5516–5867	352		ATT	T
tRNA ^{Ala}	F	5868–5933	66	TGC (5897–5899)		
tRNA ^{Arg}	F	5930–5998	69	TCG (5962–5964)		
tRNA ^{Asn}	F	5999–6064	66	GTT (6031–6033)		
tRNA ^{Ser}	F	6064–6131	68	TCT (6096–6098)		
tRNA ^{Glu}	F	6132–6194	63	TTC (6162–6164)		
tRNA ^{Phe}	R	6193–6255	63	GAA (6223–6225)		
<i>Nad5</i>	R	6256–7978	1723		ATA	T
tRNA ^{His}	R	7976–8040	65	GTG (8007–8009)		
<i>Nad4</i>	R	8041–9370	1330		ATA	T
<i>Nad4L</i>	R	9367–9651	285		ATG	TAA
tRNA ^{Thr}	F	9654–9717	64	TGT (9684–9686)		
tRNA ^{Pro}	R	9718–9782	65	TGG (9750–9752)		
<i>Nad6</i>	F	9784–10,299	516		ATC	TAA
<i>Cob</i>	F	10,299–11,438	1140		ATG	TAG
tRNA ^{Ser}	F	11,437–11,503	67	TGA (11,466–11,468)		
<i>Nad1</i>	R	11,521–12,465	945		ATT	TAG
tRNA ^{Leu}	R	12,472–12,536	65	TAG (12,505–12,507)		
16S rRNA	R	12,538–13,824	1287			
tRNA ^{Val}	R	13,825–13,892	68	TAC (13,861–13,863)		
12S rRNA	R	13,893–14,709	817			
A + T rich region	R	14,710–15,742	1033			

**Figure 1.** A maximum-likelihood tree inferred from the nucleotide sequences of 13 PCGs in the mitochondrial genome. The numbers beside the nodes are percentages of 1000 bootstrap values. *Paleosepharia posticata* was used as an outgroup. Alphanumeric terms indicate the GenBank accession numbers.

C. relictus, a 16 bp-long poly-A, a 9 bp-long poly-T, and micro-satellite-like TA repeats were scattered throughout this region (Table 1).

A phylogenetic position of *C. relictus* was inferred, and the analysis clearly showed the beetle as a distinct species among the other cerambycid species (Figure 1).

Prior to the initiation of a conservation breeding program, the complete mitogenome of *C. relictus* from this study will be used to determine the population genetic structure and diversity among the species populations from all three countries.

Nucleotide sequence accession number

The complete mitochondrial genome sequence of *Callipogon relictus* has been assigned GenBank accession number MF521835.

Acknowledgements

We thank Drs Sang-Yong Kim (Korea National Arboretum, Yangpyeong, Korea), Bong-Woo Lee (Korea Forest Service, Daejeon, Korea) and Mr. Ik-Je Choi (Gyeongsangbuk-do Foundation Original Seed Production Center, Sangju, Korea) for their kind assistance in the field, Gwangneung forest, Korea.

Disclosure statement

The authors report no conflicts of interest. The authors alone are responsible for the content and writing of the paper. No potential conflict of interest was reported by the authors.

Funding

This work was supported by the Korea National Arboretum [grant KNA1-2-28, 17-3] and Korea Forest Service [grant S111616L050100].

References

- Cherepanov AI. 1988. Cerambycidae of Northern Asia. Vol. 1. Prioninae, disteniinae, lepturinae, aseminae. New Delhi: Amerind Publishing.
- Chiu WC, Yeh WB, Chen ME, Yang MM. 2016. Complete mitochondrial genome of *Aeolesthes oenochrous* (Fairmaire) (Coleoptera: Cerambycidae): an endangered and colorful longhorn beetle. *Mitochondrial DNA A DNA Mapp Seq Anal.* 27:686–687.
- Kearse M, Moir R, Wilson A, Stones-Havas S, Cheung M, Sturrock S, Buxton S, Cooper A, Markowitz S, Duran C, et al. 2012. Geneious Basic: an integrated and extendable desk to software platform for the organization and analysis of sequence data. *Bioinformatics.* 28:1647–1649.
- Kim KG, Hong MY, Kim MJ, Im HH, Kim MI, Bae CH, Seo SJ, Lee SH, Kim I. 2009. Complete mitochondrial genome sequence of the yellow-spotted long-horned beetle *Psacotheta hilaris* (Coleoptera: Cerambycidae) and phylogenetic analysis among coleopteran insects. *Mol Cells.* 27:429–441.
- Lim J, Jung SY, Lim JS, Jang J, Kim KM, Lee YM, Lee BW. 2013. A review of host plants of Cerambycidae (Coleoptera: Chrysomeloidea) with new host records for fourteen cerambycids, including the Asian longhorn beetle (*Anoplophora glabripennis* Motschulsky), in Korea. *Korean J Appl Entomol.* 53:111–133.
- Lim J, Kim M, Kim IK, Jung S, Lim JS, Park SY, Kim KM, Byun BK, Lee BW, Lee S. 2013. Molecular identification and larval description of *Callipogon relictus* Semenov (Coleoptera: Cerambycidae), a natural monument of South Korea. *J Asia Pac Entomol.* 16:223–227.
- Schattner P, Brooks AN, Lowe TM. 2005. The tRNAscan-SE, snoscan and snoGPS web servers for the detection of tRNAs and snoRNAs. *Nucleic Acids Res.* 33(Web Server issue):W686–W689.
- Timmermans MJTN, Barton C, Haran J, Ahrens D, Culverwell CL, Ollikainen A, Dodsworth S, Foster PG, Bocak L, Vogler P. 2015. Family-level sampling of mitochondrial genomes in Coleoptera: compositional heterogeneity and phylogenetics. *Genome Biol Evol.* 8:161–175.
- Timmermans MJTN, Vogler AP. 2012. Phylogenetically informative rearrangements in mitochondrial genomes of Coleoptera, and monophyly of aquatic elateriform beetles (Dryopoidea). *Mol Phylogenet Evol.* 63:299–304.