

Effects of a single long-acting muscarinic antagonist agent and a long-acting muscarinic antagonist/long-acting β 2-adrenoceptor agonist combination on lung function and symptoms in untreated COPD patients in Japan

Hideyasu Yamada^{1,2}
Norihito Hida²
Nobuyuki Hizawa¹

¹Department of Pulmonology, Graduate School of Comprehensive Human Sciences, University of Tsukuba, Tsukuba, Ibaraki, Japan;

²Department of Respiratory Medicine, Hitachinaka General Hospital, Hitachi Ltd, Hitachinaka, Ibaraki, Japan

Background: A large body of evidence suggests that long-acting β 2-adrenoceptor agonist (LABA)/long-acting muscarinic antagonist (LAMA) combinations induce a strong synergistic bronchodilatory effect in human isolated airways. Moreover, a recent post hoc analysis demonstrated clinical synergism between LABAs and LAMAs, which induces a synergistic improvement not only in lung function but also in dyspnea in COPD patients.

Aim: The aim of this study is to examine the baseline factors related to improvement in lung function or clinical symptoms that results from the administration of LAMA or LAMA/LABA and to compare the differences in improvement in lung function or clinical symptoms between LAMA and LAMA/LABA.

Methods: Among 829 patients with COPD who were treated with LAMA or LAMA/LABA in our hospital, 112 patients (aged 40–89 years) matched the criteria. Of these 112 patients, 71 received LAMA (LAMA group) and 41 received LAMA/LABA (LAMA/LABA group) as the initial treatment. Various examination results such as lung function test values, symptom change, and frequency of exacerbations were compared between the two groups.

Results: Compared with the monotherapy, the combination therapy significantly improved the FEV₁, inspiratory capacity (IC), and total COPD assessment test (CAT) scores. Comparing the improvement in each domain of the CAT produced by the combination therapy with that of the monotherapy, larger improvements were found for the domains of going out and sleeping. The frequency of exacerbations during the 24 weeks was significantly lower in the combination therapy group than in the LAMA monotherapy group ($P=0.034$). Although no relationship was found between improvement in FEV₁ and any pretreatment factors in the LAMA/LABA group, the improvement in the CAT score was strongly related to the baseline CAT score, smoking index, and air trapping index (P -value $<1 \times 10^{-4}$).

Conclusion: In this study of clinical practice, we found that LAMA/LABA combination therapy improved the clinical symptoms of COPD and IC and that the effects of the combination therapy were consistent with those observed in previous clinical trials.

Keywords: COPD, COPD assessment test, FEV₁, LAMA, LAMA/LABA

Correspondence: Hideyasu Yamada
Department of Pulmonology, Graduate School of Comprehensive Human Sciences, University of Tsukuba, Tennodai 1-1-1, Tsukuba 305-8577, Ibaraki, Japan
Tel +81 29 354 5111
Email h.yamada@md.tsukuba.ac.jp

Introduction

COPD is a lung disease characterized by persistent and incompletely reversible airflow limitation and is associated with an abnormal response of the lungs to noxious particles

or gases. COPD is one of the most common respiratory diseases in older people, and the third cause of morbidity and mortality worldwide, with a high and growing prevalence.¹

Dual bronchodilator therapy is the cornerstone of COPD treatment.² A fixed-dose combination of an LABA and an LAMA improves lung function, dyspnea, quality of life, and exercise tolerance and reduces the risk of exacerbations of COPD, leading to unquestionable clinical benefits when compared with bronchodilator monotherapy.^{3,4} In the current strategies, treatment with single-agent bronchodilators is recommended for patients with milder disease and LABA/LAMA combination therapy for patients with moderate or more severe COPD.⁵

The rationale for combining two bronchodilators with different mechanisms of action is to induce synergism in the therapeutic efficacy, reduce the overall risk of adverse events, and allow significant dose reductions for a given effect. In addition, the toxicities of the drugs should not overlap.⁶ A large body of evidence suggests that LAMA/LABA combinations induce a strong synergistic bronchodilatory effect in human isolated airways.^{7,8} Moreover, a recent post hoc analysis demonstrated clinical synergism between LABAs and LAMAs, which induces a synergistic improvement not only in lung function but also in dyspnea in COPD patients.⁹

In the current study, we examined whether LAMA/LABA combination therapy in the actual clinical setting in

Japan shows comparable efficacy with that found in clinical trials in non-Japanese populations. We compared improvements in lung function and clinical symptoms obtained with a single agent of LAMA with those obtained with a combination therapy of LAMA and LABA in patients with stage I–IV COPD.

Methods

Participants

We studied 829 patients with newly diagnosed COPD who initiated LAMA or LAMA/LABA treatment from 2011 to 2018 at our hospital (Hitachinaka General Hospital, Hitachinaka, Japan). They had never used bronchodilators before. Of those, 717 patients were excluded on the basis of the following criteria: 1) the treatment was interrupted owing to side effects (arrhythmia: LAMA 1, LAMA/LABA 1; increased urinary frequency: LAMA 1); 2) the initial treatment was not administered at our hospital (n=232); 3) ICS therapy was given during the observation period, and comorbid asthma was diagnosed by a respiratory specialist (n=316); 4) a regular examination was unavailable for at least 24 weeks (n=78); and 5) respiratory function testing was not available before and after treatment (n=91) (Figure 1). Of the remaining 112 patients, aged 40–89 years, 71 received LAMA (tiotropium, n=65; glycopyrronium, n=2; and acridinium, n=4), and 41 received LAMA/LABA (tiotropium/indacaterol, n=5; tiotropium/olodaterol, n=29; and glycopyrronium/indacaterol,

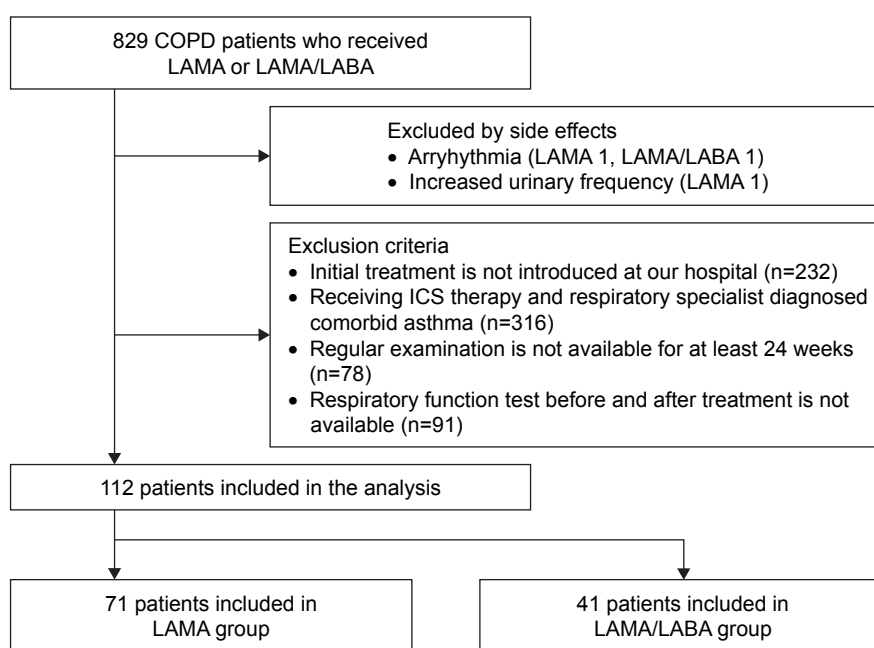


Figure 1 Flowchart of recruitment of COPD patients.

Abbreviations: LABA, long-acting β_2 -adrenoceptor agonist; LAMA, long-acting muscarinic antagonist; ICS, inhaled corticosteroid.

n=7) as the initial treatment. The study protocol was approved by the institutional review board of Hitachinaka General Hospital (No. 17-008). We obtained written informed consent from the patients, with the exception of patients who had already died or who had stopped visiting us for reasons such as transfers. All patient data were maintained with strict confidentiality; therefore, the institutional review board of Hitachinaka General Hospital waived informed consent from the deceased or transferred patients.

Lung function tests

Spirometry using an electronic spirometer was performed with the patient in standing position, and in accordance with the criteria established by the Japanese Respiratory Society (JRS).¹⁰ None of the patients used bronchodilators before spirometry. The patients performed up to three forced expiratory maneuvers to obtain acceptable results. Well-trained respiratory technicians continuously monitored the spirometry procedure and reviewed the flow–volume curves to ensure adherence to the standards. Data for %FEV₁, %FVC, IC, and FEV₁/FVC were obtained from all the patients.

We compared the lung function before and after the LAMA or LAMA/LABA treatments. The “before treatment” lung function was measured 2 weeks before the treatment, and the “after treatment” lung function was measured 4–12 weeks after the treatment. Lung function values were measured 2–8 hours after the inhaled dose. The time points for the “before” and “after” treatment lung function measurements were identical for each patient. The inhalation technique for both treatments was confirmed to be appropriate.

COPD exacerbations

A COPD exacerbation was defined as one of the following:

- 1) addition of antibiotics with or without an antitussive expectorant within 24 weeks of the initial administration;
- 2) an unexpected consultation within 24 weeks of the initial administration; and
- 3) hospitalization due to a respiratory disease within 24 weeks of the initial administration.

COPD assessment test

COPD status was assessed using the CAT. The CAT is a disease-specific questionnaire to assess the health status of individuals with COPD. It consists of eight questions related to cough, expectoration, dyspnea, chest tightness, going up hills/stairs, confidence in leaving home, activity limitations at home, and levels of energy and one question assessing the impact of COPD on sleep. Each question is assessed on a five-point scale, providing a total score ranging from 0 (floor)

to 40 (ceiling), with higher scores indicating a more severe impact of COPD on a patient’s life.^{11,12}

Statistical analyses

The changes in lung function (VC, FVC, FEV₁, IC) and CAT scores after 24 weeks of LAMA or LAMA/LABA treatment were assessed using Student’s *t*-test, and the frequencies of exacerbations during the 24 weeks of treatment were compared between LAMA and LAMA/LABA groups using Pearson’s chi-squared test. We used univariate and multivariate analyses to examine pretreatment factors related to improvements in FEV₁ or CAT score obtained with LAMA or LAMA/LABA. The variables incorporated in these models were age at the beginning of treatment, pack years of smoking history, CAT scores, and lung function test values before treatment. The changes in every CAT domain obtained with the single LAMA treatment were compared with those obtained with the combined LAMA/LABA treatment using Student’s *t*-test. Lastly, we also examined the relationship between improvement in CAT scores and improvement in lung function measures.

Results

Patients’ characteristics

The patients’ demographics and characteristics are summarized in Table 1. No statistical difference was found in any factor between the two groups.

Table 1 Patients’ demographics and baseline characteristics

Characteristics	LAMA group (n=71)	LAMA/LABA group (n=41)	P-value
Age (years)	71.5±7.6	68.9±10.9	NS
Female sex, n (%)	6 (8.5)	3 (7.3)	NS
Pack years	45.6±26.5	39.9±42.4	NS
CAT	12.4±6.8 (n=38)	9.7±6.2 (n=25)	NS
VC (L)	3.2±0.88	3.2±0.80	NS
Predicted VC (%)	100.5±22.4	95.1±19.7	NS
FVC (L)	2.97±0.88	2.90±0.77	NS
Predicted FVC (%)	93.7±22.9	87.4±18.3	NS
FEV ₁ (L)	1.62±0.58	1.69±0.57	NS
Predicted FEV ₁ (%)	69.7±21.4	67.1±17.0	NS
FEV ₁ /FVC (%)	54.1±10.6	58.0±9.91	NS
IC (L)	1.93±0.63	1.83±0.57	NS
V25	0.25±0.13	0.30±0.18	NS
V50/V25	3.49±1.46	3.72±1.40	NS
Air trapping index	7.63±10.2	8.25±8.6	NS
Stage (n)	I 22/II 35/ III 13/IV 1	I 10/II 23/ III 8/IV 0	NS

Notes: Data are presented as mean ± SD unless otherwise indicated. There was no statistical difference in each factor between the two groups. V25, expiratory airflow rate at 25% vital capacity. V50/V25, ratio of the airflow rate at 50% vital capacity to the airflow rate at 25% vital capacity. Air trapping index: ratio of [VC – FVC] to VC. **Abbreviations:** CAT, COPD assessment test; IC, inspiratory capacity; LABA, long-acting β₂-adrenoceptor agonist; LAMA, long-acting muscarinic antagonist; NS, nonsignificant; VC, vital capacity.

Table 2 Therapeutic effects in the LAMA group and the LAMA/LABA group

	Treatment	n	Mean	SD	SE	P-value*
Improvement in FEV ₁ (L)	LAMA	71	0.084	0.185	0.022	0.005
	LAMA/LABA	41	0.212	0.194	0.030	
Improvement in CAT	LAMA	38	1.000	6.307	1.023	0.034
	LAMA/LABA	25	3.960	6.059	1.212	
Improvement in VC (L)	LAMA	71	0.112	0.411	0.049	0.081
	LAMA/LABA	41	0.224	0.401	0.063	
Improvement in FVC (L)	LAMA	71	0.127	0.391	0.046	0.142
	LAMA/LABA	41	0.218	0.485	0.076	
Improvement in IC (L)	LAMA	71	0.078	0.303	0.036	1.8×10 ⁻⁴
	LAMA/LABA	41	0.319	0.381	0.060	

Note: *P-value for comparison of the LAMA group and LAMA/LABA groups (Student's *t*-test, one-sided).

Abbreviations: CAT, COPD assessment test; IC, inspiratory capacity; LABA, long-acting β 2-adrenoceptor agonist; LAMA, long-acting muscarinic antagonist; SE, standard error; VC, vital capacity.

Comparison of therapeutic effects of LAMA and LAMA/LABA

A summary of the results is shown in Table 2. The FEV₁ and IC were significantly improved by the combination therapy: IC was improved by 241 mL. Similarly, the CAT scores were significantly improved by the combination therapy (mean change =3). When we compared the therapeutic effects of the single therapy with those of the combination therapy for each of the eight domains of the CAT, although no significant differences were found for cough and sputum, the domains of going out and sleeping were significantly improved by the combination therapy (Figure 2). In the LAMA group, nine of the 71 patients had exacerbations, and in the LAMA/LABA group, one of the 41 patients had exacerbations during the 24 weeks. The frequency of exacerbations was significantly lower in the combination therapy group ($P=0.034$, one-sided Pearson's chi-squared test; Table 3).

Relationship between pretreatment factors and therapeutic effects

The relationship between all the pretreatment factors (age, pack years, CAT, VC, FVC, %VC, %FVC, FEV₁, %FEV₁, FEV₁/FVC, IC, air trapping index) and therapeutic effects was analyzed by univariate analysis (Table 4). In the LAMA group, improvements in IC and baseline FEV₁ were related, but IC was not related to any other factors including the baseline CAT score. Multivariate stepwise analysis revealed no significant relationships between the pretreatment factors and the therapeutic effects in the LAMA group.

In the LAMA/LABA group, although no relationship was found between improvement in FEV₁ and any pretreatment factors, the improvement in the CAT score was strongly related to the baseline CAT score, smoking index, and air trapping index (Tables 4 and 5). In addition, we found that improvement in FVC was significantly related to

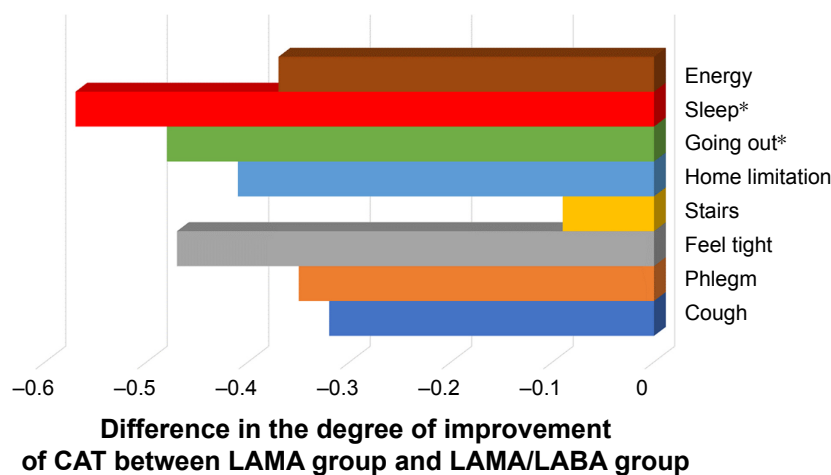


Figure 2 Comparisons of improvement in each domain of CAT between the LAMA/LABA and LAMA groups.

Note: *P-value <0.05, comparison of LAMA and LAMA/LABA groups (Student's *t*-test, one-sided).

Abbreviations: CAT, COPD assessment test; LABA, long-acting β 2-adrenoceptor agonist; LAMA, long-acting muscarinic antagonist.

Table 3 Number of exacerbations in the LAMA and LAMA/LABA groups

Group	Exacerbation		Total
	Yes	No	
LAMA	9	62	71
LAMA/LABA	1	40	41
Total	10	102	112

Notes: The frequency of exacerbations was significantly lower in the combination therapy group ($P=0.034$, one-sided Pearson's chi-squared test). The definition of exacerbations is provided in the COPD exacerbations section.

Abbreviations: LABA, long-acting β_2 -adrenoceptor agonist; LAMA, long-acting muscarinic antagonist.

improvement in the total CAT score (Figure 3A; Table 6). The improvement in IC was significantly related to the improvement in CAT scores for the going out and sleeping domains (Figure 3B; Table 6).

Discussion

In this study of clinical practice in Japan, LAMA/LABA combination therapy showed greater effect on lung function, clinical symptoms, and exacerbations in patients with COPD (stages I–IV). With the LAMA/LABA combination therapy, improvement in the CAT score was obvious in patients with elevated baseline air trapping index and CAT scores. Furthermore, our findings indicated that improvement in IC may have led to the improvement in the CAT scores for the going out and sleeping domains.

The Nippon COPD Epidemiology (NICE) study ($N=2,343$) demonstrated that the prevalence of COPD in Japan is comparable to that in other developed countries.¹³ Several studies have compared the effects of a single LAMA agent

Table 4 Relationships between pretreatment factors and therapeutic effects (univariate analysis)

Pearson correlation coefficient	LAMA		LAMA/LABA	
	FEV ₁	CAT	FEV ₁	CAT
Age	-0.029	-0.045	-0.254	0.029
Pack years	0.020	-0.098	-0.048	0.745**
CAT	0.112	0.316	0.084	0.857**
VC	0.050	0.066	0.121	0.145
FVC	-0.018	0.158	0.148	-0.087
%VC	0.022	0.180	0.119	0.178
%FVC	-0.058	0.256	0.134	-0.130
FEV ₁	-0.027	0.226	0.005	-0.244
%FEV ₁	-0.084	0.308	-0.139	-0.298
FEV ₁ /FVC	-0.007	0.200	-0.195	-0.311
IC	0.290*	0.026	0.102	-0.066
Air trapping index	0.137	-0.275	-0.079	0.711**

Notes: In the LAMA group, baseline IC was shown to be related to improvement in FEV₁. Improvement in CAT was strongly related to CAT, smoking index, and air trapping index before treatment. * $P<0.05$; ** $P<1\times 10^{-4}$.

Abbreviations: CAT, COPD assessment test; IC, inspiratory capacity; LABA, long-acting β_2 -adrenoceptor agonist; LAMA, long-acting muscarinic antagonist; VC, vital capacity.

Table 5 Relationships between pretreatment factors and therapeutic effects (multivariate analysis)

Group	Trait	PF	SE	β	t-value	P-value
LAMA/ LABA	Improvement in CAT score	CAT	0.120	0.519	4.216	3.88×10^{-4}
		ATI	0.089	0.301	2.892	0.009
		PY	0.013	0.254	2.181	0.041

Abbreviations: ATI, air trapping index; CAT, COPD assessment test; LABA, long-acting β_2 -adrenoceptor agonist; LAMA, long-acting muscarinic antagonist; PF, pretreatment factor; PY, pack year; SE, standard error.

with those of an LAMA/LABA combination on FEV₁,^{14,15} clinical symptoms assessed using the Transition Dyspnea Index and the St George's Respiratory Questionnaire,¹⁶ and exacerbations¹⁷ in COPD patients. All of those studies reported that the combination therapy was superior to the single-agent therapy and that the combination therapy had no medication side effects. Our current findings are consistent with those observed in previous clinical trials.

According to the recently modified GOLD guidelines,⁵ the presence of airflow limitation is used as a diagnostic criterion, but symptom intensities and exacerbations are considered to be more important in the selection of treatment strategies. If the clinical score such as the CAT score is high or exacerbation is frequent, use of stronger bronchodilators is recommended. In this study, the baseline FEV₁ did not predict improvement in clinical symptoms, and even among the COPD patients with milder airflow limitation, those with higher CAT scores at baseline seemed to have benefited from the combination therapy.

Limitations

This study was limited by its retrospective nature and the fact that the patients were not randomly assigned to the treatments. Furthermore, we could not perform uniform guidance of the inhalation technique, and there were periods during which only LAMA could be prescribed.

Conclusion

The present study found that LAMA/LABA combination improved the clinical symptoms of COPD and IC and that the effects of the combination therapy were consistent with those observed in previous clinical trials. In the future, randomized clinical trials may reveal the significance of LAMA/LABA combination therapy even in COPD patients with milder severity.

Abbreviations

CAT, COPD assessment test; IC, inspiratory capacity; ICS, inhaled corticosteroid; LABA, long-acting β_2 -adrenoceptor agonist; LAMA, long-acting muscarinic antagonist; VC, vital capacity.

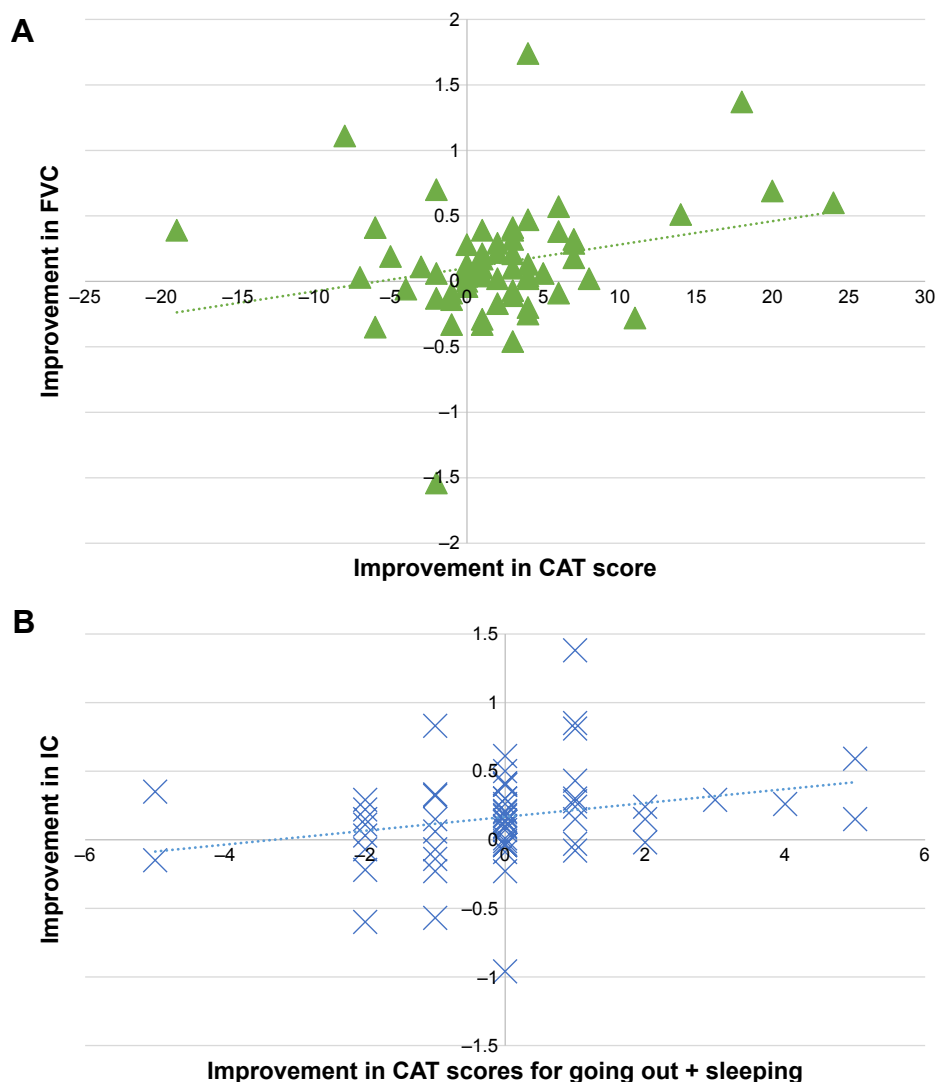


Figure 3 (A) Relationship between improvement in FVC and improvement in total CAT score in 63 COPD patients with CAT data. (B) Relationship between improvement in IC and improvement in CAT scores for going out + sleeping in 63 COPD patients.

Abbreviations: CAT, COPD assessment test; IC, inspiratory capacity.

Table 6 Relationship between improvements in CAT scores and lung functions

Improvement in CAT	Improvement in lung function	SE	β	t-value	P-value
All domains	FVC	1.780	0.257	2.074	0.042
Going outside + sleeping	IC	0.624	0.255	2.060	0.044

Abbreviations: CAT, COPD assessment test; IC, inspiratory capacity; SE, standard error.

Acknowledgment

The authors thank Ms F Miyamasu, Medical English Communications Center, University of Tsukuba, for grammatical revision of the paper.

Disclosure

HY has received lecture fees from Boehringer Ingelheim. NHiz has received lecture fees from AstraZeneca, Astellas

Pharma, and Boehringer Ingelheim. NHid has no conflicts of interest in this work.

References

- Jiang Z, Knudsen NH, Wang G, et al. Genetic control of fatty acid β -oxidation in chronic obstructive pulmonary disease. *Am J Respir Cell Mol Biol.* 2017;56(6):738–748.
- Calzetta L, Rogliani P, Facciolo F, Rendina E, Cazzola M, Matera MG. Pharmacological characterization of the interaction between umeclidinium and vilanterol in human bronchi. *Eur J Pharmacol.* 2017;812:147–154.

3. Calzetta L, Ora J, Cavalli F, Rogliani P, O'Donnell DE, Cazzola M. Impact of LABA/LAMA combination on exercise endurance and lung hyperinflation in COPD: a pair-wise and network meta-analysis. *Respir Med*. 2017;129:189–198.
4. Calzetta L, Rogliani P, Matera MG, Cazzola M. A systematic review with meta-analysis of dual bronchodilation with LAMA/LABA for the treatment of stable COPD. *Chest*. 2016;149(5):1181–1196.
5. Global Initiative for Chronic Obstructive Lung Disease. Global Strategy for the Diagnosis, Management, and Prevention of Chronic Obstructive Pulmonary Disease. Bethesda, MD: GOLD; 2017.
6. Chou TC. Theoretical basis, experimental design, and computerized simulation of synergism and antagonism in drug combination studies. *Pharmacol Rev*. 2006;58(3):621–681.
7. Cazzola M, Calzetta L, Page CP, et al. Pharmacological characterization of the interaction between acclidinium bromide and formoterol fumarate on human isolated bronchi. *Eur J Pharmacol*. 2014;745:135–143.
8. Cazzola M, Calzetta L, Puxeddu E, et al. Pharmacological characterization of the interaction between glycopyrronium bromide and indacaterol fumarate in human isolated bronchi, small airways and bronchial epithelial cells. *Respir Res*. 2016;17(1):70.
9. Rogliani P, Calzetta L, Ora J, Puxeddu E, Cazzola M, Matera MG. Clinical synergism of LABA/LAMA combinations in COPD patients. Presented at: ERS Congress; September 11, 2017; Milan.
10. Guideline of respiratory function tests-spirometry, flow-volume curve, diffusion capacity of the lung. *Nihon Kogyoku Gakkai Zasshi*. 2004;Suppl:1–56.
11. Jones PW, Brusselle G, dal Negro RW, et al. Properties of the COPD assessment test in a cross-sectional European study. *Eur Respir J*. 2011;38(1):29–35.
12. Jones PW, Harding G, Berry P, Wiklund I, Chen WH, Kline Leidy N. Development and first validation of the COPD Assessment Test. *Eur Respir J*. 2009;34(3):648–654.
13. Fukuchi Y, Nishimura M, Ichinose M, et al. COPD in Japan: the Nippon COPD Epidemiology study. *Respirology*. 2004;9(4):458–465.
14. Vincken W, Aumann J, Chen H, Henley M, Mcbryan D, Goyal P. Efficacy and safety of coadministration of once-daily indacaterol and glycopyrronium versus indacaterol alone in COPD patients: the GLOW6 study. *Int J Chron Obstruct Pulmon Dis*. 2014;9(9):215–228.
15. Beeh KM, Westerman J, Kirsten AM, et al. The 24-h lung-function profile of once-daily tiotropium and olodaterol fixed-dose combination in chronic obstructive pulmonary disease. *Pulm Pharmacol Ther*. 2015;32:53–59.
16. Buhl R, Maltais F, Abrahams R, et al. Tiotropium and olodaterol fixed-dose combination versus mono-components in COPD (GOLD 2–4). *Eur Respir J*. 2015;45(4):969–979.
17. Calverley PMA, Anzueto AR, Carter K, et al. Tiotropium and olodaterol in the prevention of chronic obstructive pulmonary disease exacerbations (DYNAGITO): a double-blind, randomised, parallel-group, active-controlled trial. *Lancet Respir Med*. 2018;6(5):337–344.

International Journal of COPD

Publish your work in this journal

The International Journal of COPD is an international, peer-reviewed journal of therapeutics and pharmacology focusing on concise rapid reporting of clinical studies and reviews in COPD. Special focus is given to the pathophysiological processes underlying the disease, intervention programs, patient focused education, and self management protocols.

Submit your manuscript here: <http://www.dovepress.com/international-journal-of-chronic-obstructive-pulmonary-disease-journal>

Dovepress

This journal is indexed on PubMed Central, MedLine and CAS. The manuscript management system is completely online and includes a very quick and fair peer-review system, which is all easy to use. Visit <http://www.dovepress.com/testimonials.php> to read real quotes from published authors.