

# Characterization and Immunomodulation of Canine Amniotic Membrane Stem Cells

This article was published in the following Dove Press journal:  
*Stem Cells and Cloning: Advances and Applications*

Alessandra de Oliveira  
Pinheiro<sup>1</sup>

Valéria M Lara<sup>1</sup>

Aline F Souza<sup>1</sup>

Juliana B Casals<sup>2</sup>

Fabiana F Bressan<sup>1</sup>

Paulo Fantinato Neto<sup>1</sup>

Vanessa C Oliveira<sup>1</sup>

Daniele S Martins<sup>1</sup>

Carlos E Ambrosio<sup>1</sup>

<sup>1</sup>Department of Veterinary Medicine, Faculty of Animal Science and Food Engineering, University of São Paulo, Pirassununga, São Paulo, Brazil; <sup>2</sup>Private Veterinary Practice, Pirassununga, São Paulo, Brazil

**Purpose:** Amniotic membrane stem cells have a high capacity of proliferation, cell expansion, and plasticity, as well as immunomodulatory properties that contribute to maternal-fetal tolerance. Owing to the lack of research on human amniotic membrane at different gestational stages, the canine model is considered ideal because of its genetic and physiological similarities. We aimed to characterize the canine amniotic membrane (CAM) cell lineage in different gestational stages and evaluate the expression of immunomodulatory genes.

**Materials and Methods:** Twenty CAMs from early (20–30 days) (n=7), mid- (31–45 days) (n=7), and late gestation (46–63 days) (n=6) stages were studied. The cell features were assessed by cell viability tests, growth curve, colony-forming units, in vitro differentiation, cell labeling for different immunophenotypes, and pluripotent potential markers. The cells were subjected to RT-PCR and qPCR analysis to determine the expression of *IDO*, *HGF*, *EGF*, *PGE2*, and *IL-10* genes.

**Results:** CAM cells exhibited a fibroblastoid morphology and adherence to plastic with an average cell viability of 78.5%. The growth curve indicated a growth peak in the second passage and we obtained an average of 138.2 colonies. Osteogenic, chondrogenic, and adipogenic lineages were confirmed by in vitro differentiation assays. Cellular immunophenotyping experiments confirmed the presence of positive mesenchymal markers (CD90 and CD105) and the low or negative expression of hematopoietic markers (CD45 and CD34). Qualitative analysis of the immunomodulatory functions indicated the expression of the *IDO*, *HGF*, *EGF5*, and *PGE2* genes. When stimulated by interferon-gamma, CAM cells exhibited higher *IDO* levels throughout gestation.

**Conclusion:** The CAMs from different gestational stages presented features consistent with mesenchymal stem cell lineage; better results were observed during the late gestation stage. Therefore, the gestational stage is a key factor that may influence the functionality of therapies when using fetal membrane tissues from different periods of pregnancy.

**Keywords:** canine stem cells, immunomodulation, fetal annexes

## Introduction

Mesenchymal stem cells (MSCs) are characterized by a multipotent cell lineage with a high capacity of differentiation into different cell types, which can execute trophic, paracrine, and immunomodulatory functions in other cells based on the microenvironment.<sup>1,2</sup>

In regenerative medicine, MSCs derived from fetal annexes such as amniotic fluid, amniotic membrane, and umbilical cord blood and vessels have previously been isolated and well-characterized in humans<sup>3</sup> and other species, such as dogs,<sup>4–7</sup> cats,<sup>8,9</sup> bovines,<sup>10</sup> sheep,<sup>11,12</sup> horses,<sup>13</sup> rats,<sup>14</sup> rabbits,<sup>15</sup> and ducks,<sup>16</sup> suggesting the advantages of using it as raw material for the creation of cell banks.<sup>17–20</sup>

Correspondence: Carlos E Ambrosio  
Department of Veterinary Medicine,  
Faculty of Animal Science and Food  
Engineering, University of São Paulo,  
FZEA- Av. Duque de Caxias Norte, 225,  
ZMV, Pirassununga 13635-900, São Paulo,  
Brazil  
Tel +55 19 3565-4113  
Email ceambrosio@usp.br

Immunomodulatory activities occur through direct contact between the MSCs and tissues or through paracrine interaction mediated by interferon-gamma (IFN- $\gamma$ ), produced by the body's immune cells, which act on natural killer cells, monocytes, neutrophils, and macrophages. Some of the T-helper lymphocytes, cytotoxic T lymphocytes, and B lymphocytes secrete soluble factors such as TGF- $\beta$ , interleukin-10 (IL-10), interleukin-6 (IL-6), indoleamine-2,3-dioxygenase (IDO), prostaglandin E2 (PGE2), and soluble human leukocyte antigen-G5 (sHLA-G5), or interact by cell-cell reactions,<sup>21</sup> in addition to preventing the expression of proinflammatory cytokines such as IFN- $\gamma$  and tumor necrosis factor- $\alpha$  (TNF- $\alpha$ ).<sup>22,23</sup>

Based on the significant immunomodulatory properties of MSCs and the limited number of studies on canine amniotic membrane (CAM) stem cells from different gestational stages, we aimed to characterize the CAM stem cells derived from different gestational stages and to determine the *in vitro* immunomodulatory potential and to establish a cell line that can be employed in the treatment of several diseases that affect domestic animals.

## Materials and Methods

This study was approved by the Ethical Committee on Animal Use (Comissão de Ética no Uso de Animais) of the Faculty of Animal Science and Food Engineering of the University of São Paulo (protocol #4,598,140,116). We follow the international guide for use of dogs in experiments. <https://www.ccac.ca/Documents/Standards/Guidelines/Vol2/dogs.pdf>

### Isolation and Culture of Stem Cells from CAM

Twenty CAMs from different gestational stages, early (20–30 days) (n=7), mid- (31–45 days) (n=7), and late gestation (46–63 days, due parturition) (n=6), were collected from the uteri of pregnant mixed-breed domestic dogs. The amniotic membrane fragments (Figure 1A) were washed and digested with 1 mL of Collagenase type I (Sigma, St. Louis, USA). The cells were cultured in plastic plates using  $\alpha$ MEM medium (Gibco, New York, USA) supplemented with 15% fetal bovine serum (FBS, Invitrogen, Carlsbad, USA) and 1% penicillin/streptomycin (Gibco, New York, USA), and were incubated at 38.5°C, 5% CO<sub>2</sub>, and maximum humidity.

### Analysis of Cell Viability, Growth Curve, Doubling Time, and Colony-Forming Assays

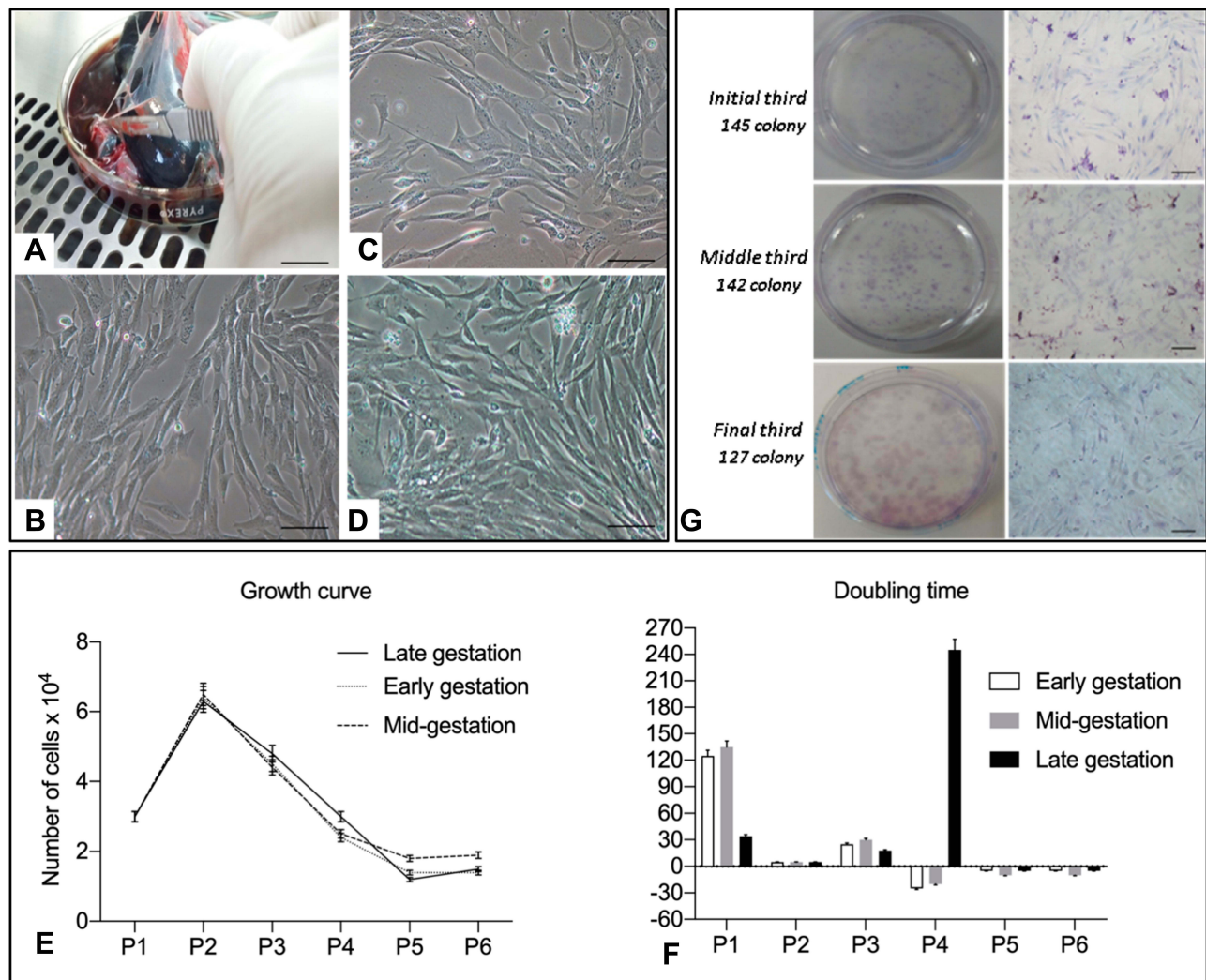
To assess the cell viability, the cells were separated in triplicate at a density of 4x10<sup>4</sup> cells/cm<sup>2</sup> and frozen. After thawing, the cells were stained with trypan blue (1:1, Sigma-Aldrich, Brazil) to assess cell viability. The viable cells were counted using a hemocytometer and a Neubauer chamber. The cells were frozen for 24 h at -80°C in Mr. Frosty Freezing container (Sigma-Aldrich, Brazil) and stored in liquid nitrogen. After freezing and thawing, the cells were counted using a Neubauer camera.

The growth curve was estimated from the triplicate and the cells were plated and counted using a hemocytometer; 3x10<sup>4</sup> cells were plated on 35-mm plates and were maintained in an incubator at 38.5°C. The cells were counted every 96 h and were subcultured at the same density until passage 5. The formula Ct/Cd was used to calculate the doubling time, where Ct represents the culture time between passage n and passage n+1 and Cd represents cell doubling. Cell doubling was calculated using the formula  $Cd = \ln(nf/ni) / \ln 2$ , where nf and ni represent the number of harvested and seeded cells, respectively. Doubling time was calculated, as described by Vidane et al.<sup>9</sup>

For the colony-forming unit assays, 1x10<sup>4</sup> cells were plated in 90-mm Petri dishes using the culture medium. The colony formation assays were conducted over 13 days, and the culture medium was changed every 3 days. After 13 days, colonies were observed and adherent cells were fixed in 4% paraformaldehyde (Sigma, St. Louis, USA) and stained for 15 min using Giemsa 0.1% stain.

### *In vitro* Differentiation Assays (Osteogenic, Adipogenic, and Chondrogenic)

All differentiation assays were performed during passage 2. To promote osteogenic and adipogenic differentiation, 1x10<sup>5</sup> were cultured in StemXVivo™ Human/Mouse Osteogenic/Adipogenic Base Media (R&D, Minneapolis, USA) supplemented with penicillin-streptomycin; after 21 days, the plates were fixed with 4% paraformaldehyde and stained by Alizarin Red and Sudan Black, respectively. For chondrogenic differentiation, 3x10<sup>5</sup> cells were placed in Falcon tubes with 5 mL of StemXVivo™ Human/Mouse Chondrogenic (R&D). After 3 days, the cells were resuspended in 2 mL of differentiation medium (R&D). After 21 days, the pellets were fixed, stained using Alcian Blue and Masson Trichrome, and analyzed.<sup>9</sup>



**Figure 1** (A) Cell collection from the amnion. (B) Cell culture from passage 1 of amniotic membranes from the initial third 20x canine fetuses (Bar: 50  $\mu$ m). Cell culture from passage 1 of amniotic membranes from the middle third of canine fetuses (Bar: 50  $\mu$ m); (C, D) cell culture from passage 1 of amniotic membranes from the final third of canine fetuses (Bar: 50  $\mu$ m); (E) graphical representation of the growth curve profile of canine amniotic membrane (CAM) stem cells; (F) doubling time graph indicating the number of days required for doubling the number of CAM cells; (G) colony-forming unit (CFU) test of CAM cells from the three gestational stages stained by Giemsa (Bar: 100  $\mu$ m).

## Flow Cytometry

Flow cytometry was used to analyze the reactivity of mesenchymal (CD90 and CD105) and hematopoietic (CD34 and CD45) specific markers (Table 1). Cells were taken from passage 2 ( $1 \times 10^5$  cells) and incubated for 20 min at 4°C with each antibody. Samples were analyzed using the flow cytometer FACS Aria-BD Cell Sorter supported by DiVa software V.6.1.2 (BD Biosciences, San Jose, CA, USA).

## Evaluation of the Immunomodulatory Response

CAM cells from passage 2 at different gestational stages were cultured in triplicate at a density of  $5 \times 10^5$ . The cells

were treated with 200 ng/mL IFN- $\gamma$  (R&D) for 72 h, as described by Saulnier et al.<sup>24</sup> and Russel et al.<sup>25</sup> After this period, the cells were evaluated for *IDO*, *HGF*, *EGF*, *PGE-2*, and *IL-10* expression.

## Real-Time Polymerase Chain Reaction (qPCR) for Evaluation of Immunomodulatory and Pluripotency Genes

Total RNA was extracted from the CAM cells from passage 2 using the TRIzol LS reagent (Life Technologies, Carlsbad, USA) following the manufacturer's protocol. The total cellular RNA concentration was quantified by

**Table 1** Specifications of the Primary and Secondary Antibodies Used for the Characterization of Mesenchymal and Hematopoietic Markers

Primary Antibodies	Isotype	Company	Catalogue Number	Species	Monoclonal Polyclonal	Species Reactivity
CD105 Dilution pure	IgG2b	Abcam	156,756	Mouse	Mono	Mouse, rat, dog, human, monkey
CD34 Dilution 1:100	IgG1	eBioscience	12-0340-42	Mouse	Mono	Dog
CD90 Dilution 1:100	IgG2b	eBioscience	12-5900-42	Rat	Mono	Dog
CD45 Dilution 1:100	IgG2b	eBioscience	11-5450-42	Rat	Mono	Dog
Secondary antibody Goat anti-mouse Dilution 1:50	IgG	Dako	F0479	Mouse	Poly	Mouse

the Nanodrop 1000 spectrophotometer (Nanodrop Technologies, Wilmington Delaware, USA). For cDNA synthesis, the mRNA was reverse transcribed using the Enzyme Reverse Transcriptase superscript III kit (Invitrogen) according to the manufacturer's specifications. Gene expression was assessed by qPCR (Step One Plus Real-Time PCR Systems, Life Technologies). The reactions were performed using a commercial assay

system (PowerUp™ SYBR® Green PCR Master Mix, Applied Biosystems®, Carlsbad, USA) with *OCT4* and *SOX2* (pluripotency genes) and *IDO*, *HGF*, *EGF*, *PGE-2*, and *IL-10* (immunomodulatory genes) as target genes of interest. The *18S* gene, a housekeeping gene, served as the control. The primer sequences are presented in Table 2. The reaction conditions consisted of 40 cycles at an annealing temperature of 60°C were quantified by

**Table 2** Sequence of Primers Used in the Evaluation of the Expression of Pluripotency and Immunomodulatory Genes

Gene	Sequence (5'-3')	Primer	Accession no.	bp	References
<i>IDO</i>	GCTGGGTCTGCCTCTATTC GCAGTCTCCACCAGGAAACC	Forward Reverse	NC_006598.3	126	[33]
<i>EGF</i>	CTATGGCCCTCAAGGATGGTG GCAGCCTTGCTCTGTGCCTTA	Forward Reverse	NC_006614.3	124	[29]
<i>HGF</i>	GGCTACTGCTCCCAAATTCCA CCCACATTGAACATGTTAGTCCAGA	Forward Reverse	NC_006600.3	123	[29]
<i>IL-10</i>	AGCACCTACTTGAGGACGA ACTGGATCATCTCCGACAGG	Forward Reverse	NC_006589.3	198	[36]
<i>IL-6</i>	GAACTCCCTCTCCACAAGC TTCTTGTC AAGCAGGTCTCC	Forward Reverse	NC_006596.3	325	[42]
<i>PGE-2</i>	CTGTCATCACCGCCAAGT CCTGGTCACTCCGGAATA	Forward Reverse	NC_006590.3	99	[49]
<i>OCT-4</i>	GCAGTGACTATTCGCAACGA ATTTGAATGCATGGGAGAGC	Forward Reverse	NC_006594.3	-	[50]
<i>SOX-2</i>	CCCACCTACAGCATGTCCTA GGAGTGGGAGGAGGAGGTAA	Forward Reverse	NC_006616.3	-	[7]
<i>18S</i>	CCTGCGGCTTAATTTGACTC CTGTCAATCCTGTCCGTGTC	Forward Reverse	NC_006605.3	65	[48]



normalizing the signals to the 18S signals using the  $2^{-\Delta\text{CT}}$  method.

## Reverse Transcriptase-Polymerase Chain Reaction (RT-PCR) for Evaluation of Immunomodulatory Genes

The CAM cells from passage 2 were subjected to RT-PCR analysis using the GoTaq<sup>®</sup> Green Master Mix Kit (Promega<sup>®</sup>, Madison, USA); the Applied Biosystems Veriti 96-well Thermal Cycler (Applied Biosystems<sup>®</sup>) was used for processing the reactions. Sequences were amplified under the following conditions: 95°C for 2 min, followed by 30 cycles of 30 s at 95°C, 30 s at 56.5°C, and 1 min at 72°C, followed by a final extension at 72°C for 5 min. At the end of the reaction, the products were analyzed in 2% agarose gel (Sigma, Carlsbad, USA) stained in solution containing SYBR<sup>®</sup> safe DNA Gel Stain (Invitrogen) to detect the *IDO*, *HGF*, *EGF*, *PGE-2*, and *IL-10* genes and were compared with 100 bp (1 kb Plus DNA Ladder, Invitrogen) markers. The endogenous *18S* gene (Table 2) was used as a reference.

## Statistical Analysis

The data obtained from the experimental procedures were analyzed using the program Graphpad Prism<sup>®</sup>, with prior verification of residue normality by the Shapiro–Wilk test. The variables that did not meet the statistical assumptions were subjected to the logarithmic transformation [ $\text{Log}(X + 1)$ ]. The original or transformed data were subjected to Analysis of Variance ( $p < 0.05$ ) as required. The time and treatment effects were evaluated by the Tukey–Kramer’s test. Effects were considered significant for  $p < 0.05$ .

## Results

### Isolation and Culture of Stem Cells from CAMs

CAM cells from different gestational stages were successfully cultured, as shown in Figure 1B–D. Cells in primary culture adhered to the plastic surface after a 48-h period and a heterogeneous population of polygonal and fibroblastoid cells was formed.

### Cryopreservation and Cellular Susceptibility

After cryopreservation, the CAM cells were thawed and an average viability of 83.3% was observed in cells from the early gestation stage. In the mid- and late gestation stages, the average viabilities were 80.1% and 75.22%, respectively.

## Growth Curve

After a 96-h period, a confluence of 80% was observed in the culture plates. After repeated passages, the growth curve indicated high development of cells at the beginning of procedures, and notably, a predominance of proliferation was noted in passage 2, while a gradual reduction of the proliferation was observed in passage 5 (Figure 1E). The Doubling time increased with each additional passage. The gradual reduction in cell proliferation rate was in accordance with successive increments in passages (Figure 1F).

## Colony-Forming Assays

Colony formation was observed after 9, 10, and 13 days in CAM cells from early, mid-, and late gestation, with 145, 142.5, and 127.3 colonies observed, respectively (Figure 1G).

## In vitro Differentiation Assays

Cells cultured in the adipogenic differentiation medium exhibited morphological changes, with formation of intracytoplasmic vacuoles. Cells cultured in the osteogenic differentiation medium exhibited the deposition of extracellular amorphous mineral material. After being cultured in the chondrogenic differentiation medium, collagen fibers stained in blue were observed (Figures 2–4).

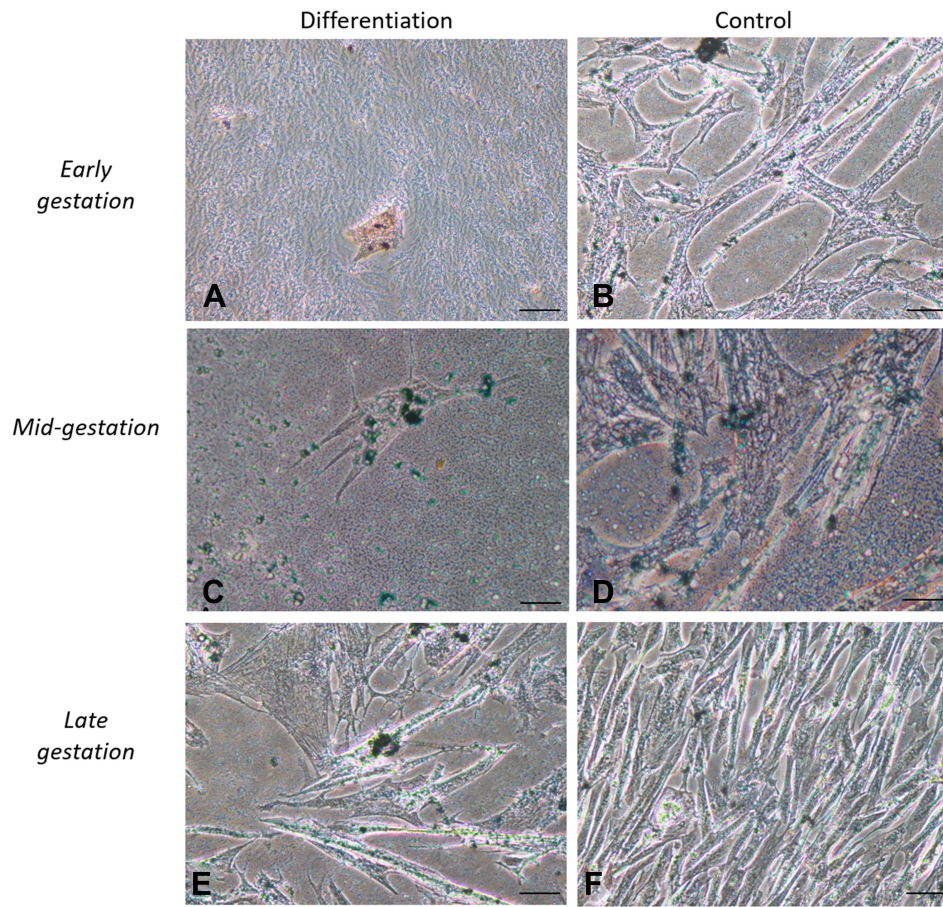
## Flow Cytometry

Early gestation CAM cells exhibited expression of CD90 (31.7%) and CD105 (5.6%) and low labeling of CD34 (0.3%) and CD45 (0.4%). CAM cells from the mid-gestation stage exhibited positivity toward the CD90 (36.7%) and CD105 (6.3%) markers, with low labeling of CD34 (0.2%) and CD45 (0.4%). CAM cells from the late gestation stage exhibited positivity toward CD90 (67.1%) and CD105 (96.4%) markers, with low labeling of CD34 (4.4%) and CD45 (2.0%) (Figure 5).

## Real-Time Polymerase Chain Reaction (qPCR) for Evaluation of Immunomodulatory and Pluripotency Genes

There was no expression of the *OCT-4* transcript in the CAM cells from the three gestational stages. There was a low expression of the *SOX-2* transcript at different stages, with a variability of abundance between gestational stages ( $p < 0.05$ ).

In the *IDO* transcript analysis, there was a significant difference ( $p < 0.05$ ) between the stimulated and



**Figure 2** In vitro differentiation adipogenic. Legend: In vitro differentiation in the adipogenic line of CAM stem cells. (A), (C and E) Intracellular Sudan black stained, it was possible to identify lipid droplets and followed by induction of adipogenic differentiation (Bar: 50µm); (B), (D and F) negative controls (Bar: 50µm).

unstimulated cells from each gestational stage, with higher expression in the stimulated cells. A significant difference ( $p < 0.05\%$ ) was observed between the stimulated cells from early gestation and other gestational stages. Unstimulated CAM cells from late gestation were significantly different from CAM cells from mid-gestation, with lower expression in cells from late gestation (Figure 6). The expression of *HGF*, *EGF*, *IL-10*, and *PGE2* transcripts was not observed in any of the three gestational stages.

### Reverse Transcriptase-Polymerase Chain Reaction (RT-PCR) for Evaluation of Immunomodulatory Genes

Analysis of the RT-PCR results revealed the expression patterns of *IDO*, *HGF*, *EGF*, *PGE2*, and *IL-10* transcripts in CAM cells from the three different gestational stages and from canine bone marrow, as shown in Figure 7.

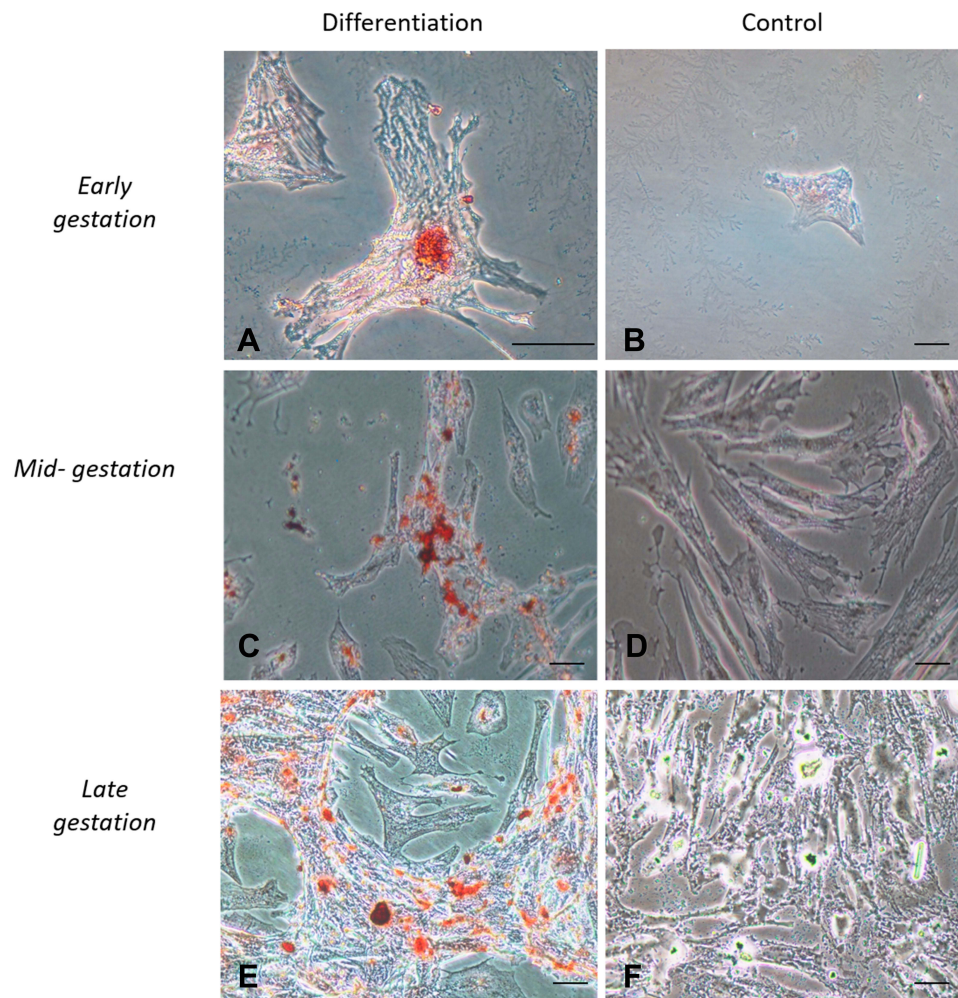
### Discussion

MSCs are present in a majority of adult tissues and have a high proliferative capacity. In comparison to corresponding information from human and mouse lineage, there is limited information on the biology and function of canine MSCs in veterinary medicine. This lack of knowledge prevents the development of evidence-based studies using canine MSCs.<sup>25</sup>

In this study, we successfully established the CAM MSC line from early, mid-, and late gestation, based on the methodology described by Lange-Consiglio et al<sup>13</sup> in the equine model. Initially, the CAM cells were isolated and subjected to primary culture, and they appeared to be proliferative and heterogeneous, with the presence of polygonal and fibroblastoid cells.<sup>8,13,24</sup> After the primary culture, the cells displayed a fibroblastoid morphology with adhesion to the plastic surface, which is one of the characteristics of MSCs.<sup>1,6,11,26</sup>

Our observations from the growth curve analysis indicated a cell growth peak in the second passage, followed





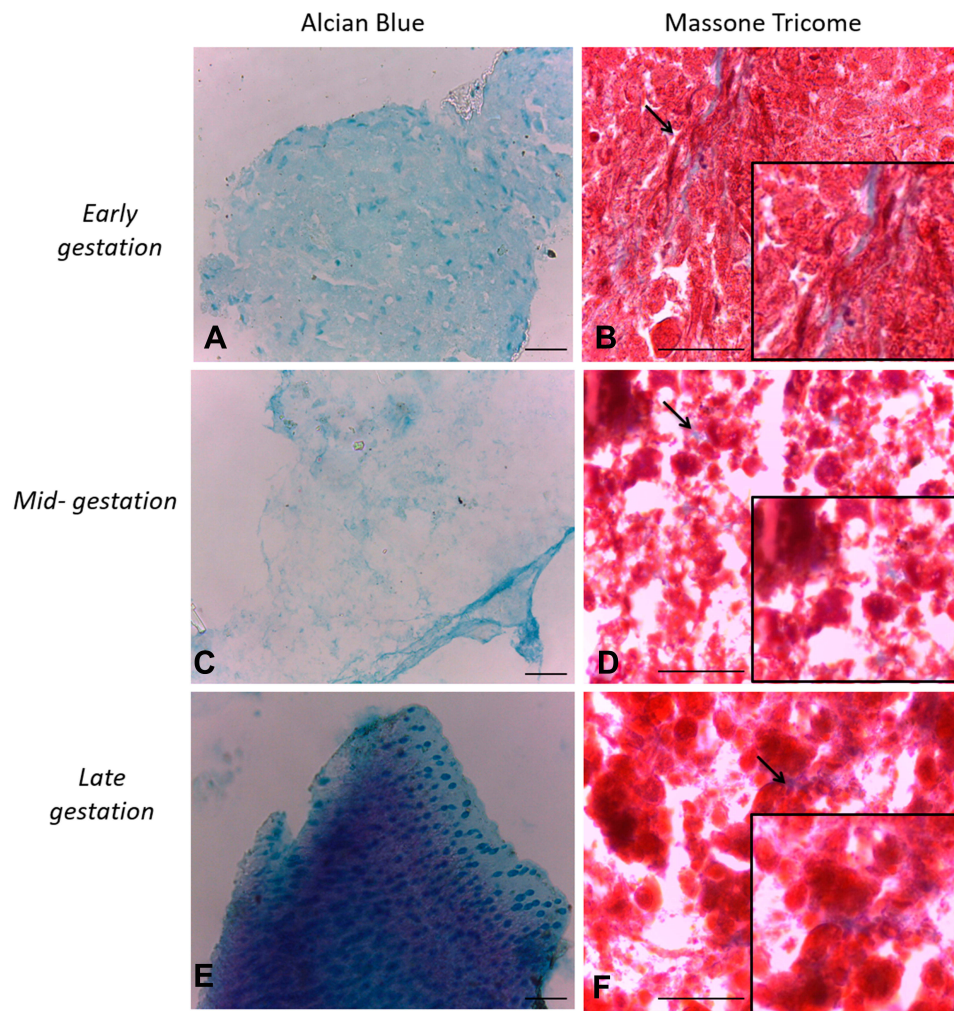
**Figure 3** In vitro differentiation osteogenic. Legend: In vitro differentiation in the osteogenic lines of CAM stem cells. (A), (C and E) Deposition of extracellular calcium followed by osteogenic differentiation stained by Red Alizarin (Bar: 50 $\mu$ m); (B), (D and F) Negative controls (Bar: 50 $\mu$ m).

by a decline in proliferation in successive passages, corroborating with previous results.<sup>9,27</sup> This decline was observed in MSCs from amniotic fluid, umbilical cord blood, and umbilical cord matrix as well, indicating a proliferation potential limited to the first passage.<sup>4,28</sup> In contrast, Park et al reported an increasing cellular proliferation rate in amniotic membrane cells between the third and the twentieth passages, without a declining growth curve. The doubling time of CAM cells increased in terms of number of days required for cell duplication, a phenomenon observed in MSCs that undergo aging and quiescence as the number of passages progress.<sup>5,9,24,27</sup>

The three gestational stages exhibited differentiation capacity in adipogenic, chondrogenic, and osteogenic lines. The differentiation capacity is cited as one of the attributes necessary for stem cells to be classified as MSCs.<sup>1,4,5,9,11,13,24,29-32</sup>

The cellular immunophenotyping results revealed the expression of mesenchymal markers (CD90 and CD105) and non-expression of hematopoietic markers (CD45 and CD34) in CAM cells from different gestational stages. This was anticipated since the tested cells were not associated with the hematopoietic lineage. These results are consistent with findings from studies involving CAM cells that characterized MSC markers (CD29, CD44, CD90, CD105 and CD166) and negative markers for immune cells (CD3, CD11c, CD28, CD38 and CD62L), hematopoietic cells (CD34 and CD45), and platelets (CD41).<sup>5,7,13,24</sup> Additionally, Saulnier et al<sup>24</sup> and Cardoso et al<sup>7</sup> reported a low expression of the CD105 marker in CAM cells.

Cells from the fetal annexes present certain advantages owing to their potential, since these can preserve embryonic characteristics by maintaining the pluripotency of



**Figure 4** In vitro differentiation chondrogenic. Legend: In vitro differentiation in the chondrogenic lines of CAM stem cells. (A), (C and E) Collagen fibers of pellet culture stained in blue. Induction of chondrogenic differentiation stained by Alcian blue (Bar: 50 $\mu$ m); (B), (D and F) note the induction of chondrogenic differentiation stained Masson's trichrome reaction (Bar: 50 $\mu$ m).

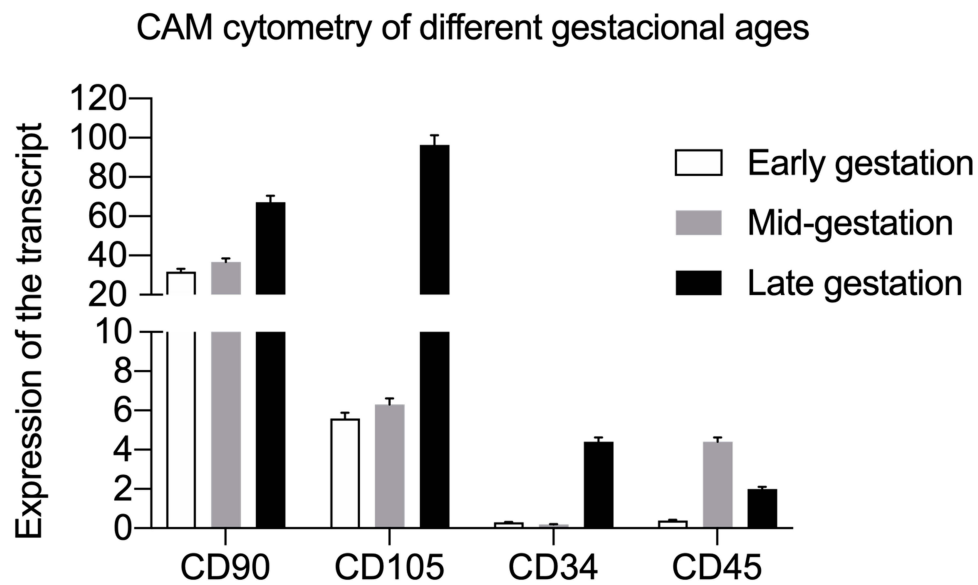
original tissues.<sup>18,24,33</sup> In our study, we reported low expression of *SOX2* and no expression of *OCT4* in the three gestational stages. Our results corroborated with those reported by Saulnier et al,<sup>24</sup> wherein the noted low expression of *SOX2* gene and no expression of *OCT4* in CAMs, and in canine placenta and umbilical cord matrices. In contrast to our results, *OCT4* gene expression was reported in CAM cells in another study.<sup>4-7</sup> Mauro et al<sup>11</sup> reported the expression of *OCT4* in passage 1 sheep cells, with significant reduction after the passage 6. Conversely, Filioli Uranio et al<sup>4</sup> reported a reduction in *OCT4* expression between passage 1 and 2. Due to the diversity of results described in the literature, more tests should be conducted on the pluripotency of CAM.

To date, this is the first study to investigate the immunomodulatory response of CAM stem cells at different

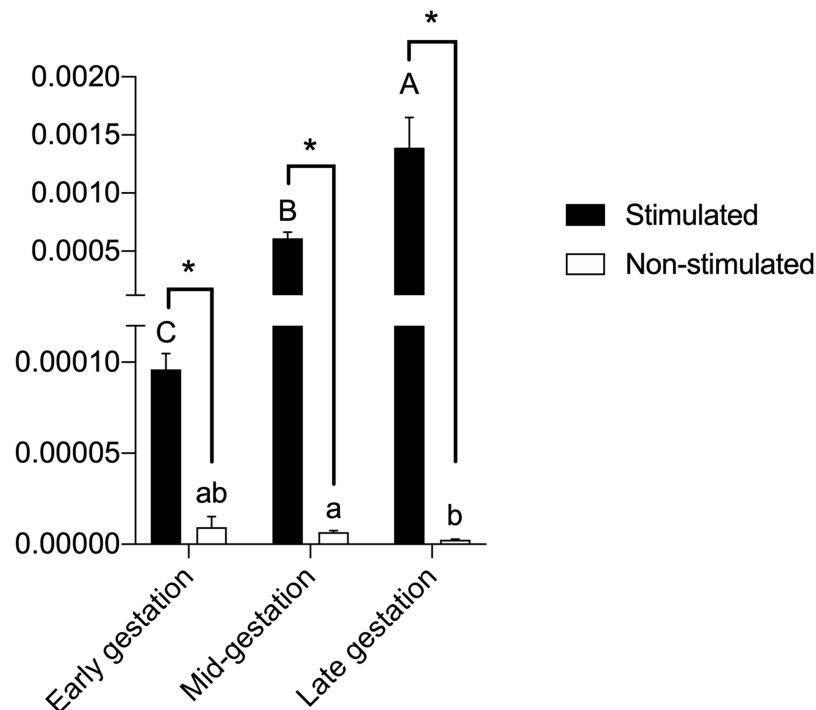
gestational stages through the expression of soluble factors such as *IL-10*, *IDO*, *HGF*, *EGF*, and *PGE2*. A limitation in this field is the absence of studies evaluating cells from canine fetal annexes throughout gestation.

The *IDO* gene, identified in some species, plays a central role in the study of in vitro immunomodulation, acting in tryptophan catabolism and inhibition of T-lymphocyte proliferation.<sup>34</sup> Stimulation with mitogens such as  $\text{INF-}\gamma$ ,  $\text{TNF-}\alpha$ , interleukin 1A (IL-1A), or interleukin 1 $\beta$  (IL-1 $\beta$ ) enhances the expression of immunomodulatory genes.<sup>35-37</sup> In our results, we observed a higher expression of *IDO* in cells stimulated with  $\text{INF-}\gamma$ , irrespective of the gestational stage. Saulnier et al<sup>24</sup> reported that CAM, placenta, and umbilical cord matrix stimulated with  $\text{INF-}\gamma$  exhibited higher *IDO* expression than unstimulated cells from the same tissues.





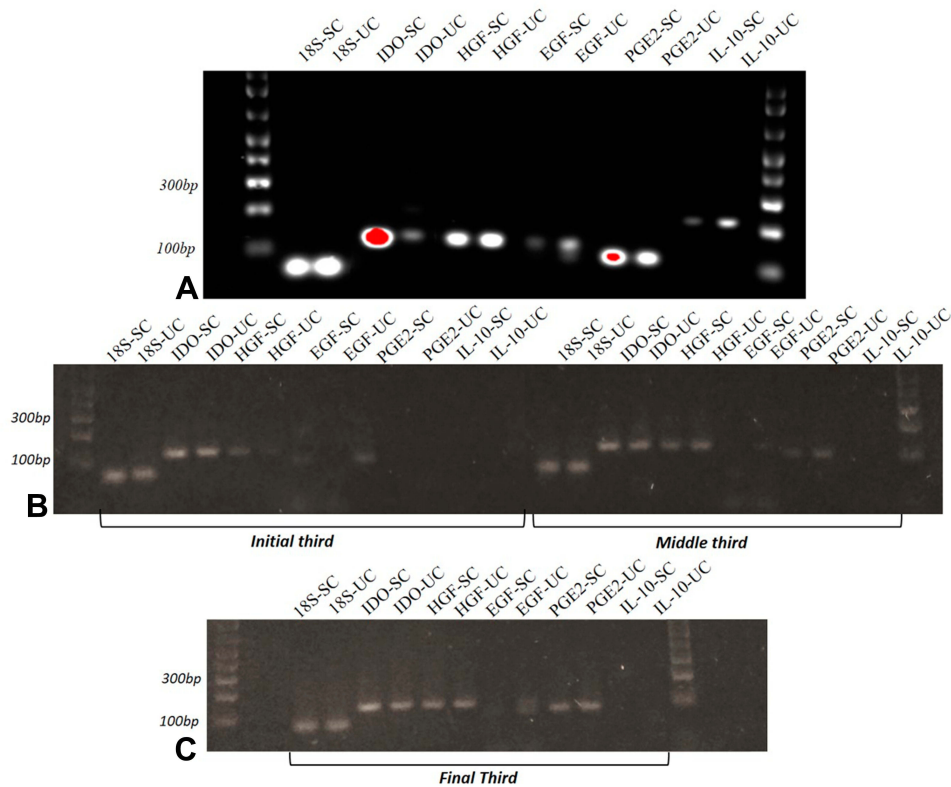
**Figure 5** Quantification of the expression of mesenchymal (CD90 and CD105) and hematopoietic markers (CD45 and CD34) in CAM cells.



**Figure 6** Legend: IDO expression in CAM cells stimulated with gamma-interferon (IFN- $\gamma$ ), or in non-stimulated cells. <sup>A-C</sup>Uppercase letters indicate significant differences between different gestational stages in stimulated CAM cells. <sup>a,b</sup>Lowercase letters indicate significant differences between different gestational stages in unstimulated CAM cells. \* indicates significant differences between stimulated or unstimulated cells from the same gestational stage.

Munn et al<sup>38</sup> and Mellor et al<sup>39</sup> highlight the significance of IDO during gestation, since pregnant mice exposed to IDO-inhibiting drugs were unable to maintain gestation. Likewise, in unstimulated CAM cells, IDO expression was lower in late gestation when compared to that in mid-gestation. Maternal-fetal recognition and

placentation take place during the early to mid-gestation stages. Therefore, a higher expression of IDO, and consequently the inhibition of the local immune system against the allogenic fetus seems to be essential to initiation and maintenance of placentation, as it is to gestation. On the contrary, in late gestation, lower expression of IDO is



**Figure 7** Electrophoresis of cytokines and growth factors. Legend: **(A)** Stimulated and non-stimulated canine bone marrow cells; **(B)** stimulated and non-stimulated CAM cells from early and mid-gestation; **(C)** stimulated and non-stimulated CAM cells from mid- and late gestation.

noted as the immune system appears to be linked to parturition, and hence, to the release of the fetal membranes as well.

The results from IFN- $\gamma$  stimulation experiments confirm the findings reported by Saulnier et al,<sup>24</sup> since CAM cells exhibit increased IDO expression levels in the presence of inflammatory stimulation. Therefore, the late gestation CAM cells should display significant immunomodulatory potential prior to inflammatory stimulation.

Quantitative evaluation of *HGF*, *EGF*, *PGE2*, and *IL-10* expression in CAM cells yielded negative results. Conversely, immunomodulation-related soluble factors, such as IGF-1, bFGF, IL-10, TNF $\alpha$ , TGF- $\beta$ , PGE2,<sup>40</sup> HGF and EGF,<sup>40,41</sup> have been identified in human amniotic membrane epithelial cells and MSCs. Kang et al<sup>42</sup> were the first to describe the immunomodulatory potential of canine MSCs, demonstrating the expression of *TGF- $\beta$* , *IL-6*, *IL-8*, *CCL2*, *CCL5*, *EGF*, *HGF* and the non-expression of *IL-10* genes in adipose tissue cells. In canine adipose and bone marrow cells, lymphocyte activation was suppressed by the cyclooxygenase and *TGF- $\beta$*  pathways, as well as by the commonly known pathways mediated by *NO* or *IDO*.<sup>43</sup> In addition, Lee et al<sup>28</sup> reported that BM-MSCs were able to

inhibit leukocyte proliferation and highlighted *PGE2* as a potential antiproliferative factor.

This study involved the assessment of the immunomodulation of CAM by exclusive IFN- $\gamma$  stimulation. Rossi et al<sup>44</sup> reported that the immunological stimulation of human amniotic membrane cells is induced by soluble molecules and cell-to-cell contact. Di Nicola et al<sup>45</sup> reported that the immunomodulatory effect on bone marrow cells is mediated exclusively by soluble factors. In contrast, Krampera et al<sup>35</sup> reported that the immunomodulatory effect on rodent MSCs appeared to be predominantly mediated by cell-to-cell contact. Therefore, the diversity of results on the immunomodulation of MSCs may be directly related to the tissue being studied or the mechanisms inherent to each species,<sup>46</sup> such as in dogs.<sup>47</sup>

## Conclusions

This is the first study that compared the cellular characterization and gene expression patterns linked to immunomodulation in CAMs from different gestational stages. We revealed that CAM cells undergo an immunophenotypic and immunomodulatory transformation during the gestational period, with more satisfactory results observed in

cells from the late gestation stage. These results suggest a distinct clinical impact on new avenues of research. Owing to the scarcity of data confirming the pathways involved in the immunomodulatory response in dogs, we conclude that a better understanding of CAM-mediated immunosuppression is necessary for future clinical applications, and this may serve as a strategy in the treatment of several immune-mediated diseases.

## Abbreviations

CAM, canine amniotic membrane; IFN- $\gamma$ , gamma-interferon; MSCs, mesenchymal stem cells.

## Data Sharing Statement

All data generated and/or analyzed during this study are included in this published article.

## Ethics and Consent Statement

This study was approved by the Ethical Committee on Animal Use (Comissão de Ética no Uso de Animais) of the Faculty of Animal Science and Food Engineering of the University of São Paulo (protocol #4,598,140,116; issued in 02/24/2016). We follow the international guide for use of dogs in experiments (<https://www.ccac.ca/Documents/Standards/Guidelines/Vol2/dogs.pdf>).

## Acknowledgments

The authors acknowledge Clésio Gomes Mariano Junior for their technical support and manuscript editing, and Natália Juliana Gonçalves Nardelli for donating the dog's cells lineages.

## Author Contributions

All authors made substantial contributions to conception and design, acquisition of data, or analysis and interpretation of data; took part in drafting the article or revising it critically for important intellectual content; gave final approval of the version to be published; and agree to be accountable for all aspects of the work.

## Funding

This study was financed in part by the Coordenação de Aperfeiçoamento de Pessoal de Nível Superior - Brasil (CAPES) – Finance Code 001, and the São Paulo Research Foundation (FAPESP – grant #2017/21266-0).

## Disclosure

The authors declare that they have no competing interests.

## References

- Dominici M, Le Blanc K, Mueller I, et al. Minimal criteria for defining multipotent mesenchymal stromal cells. The international society for cellular therapy positions statement. *Cytotherapy*. 2006;8(4):315–317. doi:10.1080/14653240600855905
- Yi T, Song SU. Immunomodulatory properties of mesenchymal stem cells and their therapeutic applications. *Arch Pharm Res*. 2012;35(2):213–221. doi:10.1007/s12272-012-0202-z
- In'tanker PS, Scherjon SA, Kleijburg-van Der Keur C, et al. Isolation of mesenchymal stem cells of fetal or maternal origin from human placenta. *Stem Cells*. 2004;22(7):1338–1345. doi:10.1634/stemcells.2004-0058
- Filioli Uranio M, Valentini L, Lange-Consiglio A, et al. Isolation, proliferation, cytogenetic, and molecular characterization and in vitro differentiation potency of canine stem cells from fetal adnexa: a comparative study of amniotic fluid, amnion, and umbilical cord matrix. *Mol Reprod Dev*. 2011;78(5):361–73.
- Park SB, Seo MS, Kim HS, Kang KS, Bauer JA. Isolation and characterization of canine amniotic membrane-derived multipotent stem cells. *PLoS One*. 2012;7(9):e44693. doi:10.1371/journal.pone.0044693
- Filioli Uranio MF, Dell'aquila ME, Caira M, et al. Characterization and in vitro differentiation potency of early-passage canine amnion- and umbilical cord-derived mesenchymal stem cells as related to gestational age. *Mol Reprod Dev*. 2014;81(6):539–51.
- Cardoso MT, Pinheiro AO, Vidane AS, et al. Characterization of teratogenic potential and gene expression in canine and feline amniotic membrane-derived stem cells. *Reprod Domest Anim*. 2017;52:58–64.
- Rutigliano L, Corradetti B, Valentini L, et al. Molecular characterization and in vitro differentiation of feline progenitor-like amniotic epithelial cells. *Stem Cell Res Ther*. 2013;4(5):133. doi:10.1186/srct344
- Vidane AS, Souza AF, Sampaio RV, et al. Cat amniotic membrane multipotent cells are nontumorigenic and are safe for use in cell transplantation. *Stem Cells Cloning*. 2014;7:71–78. doi:10.2147/SCCAA.S67790
- Campos LL, Landim-Alvarenga FC, Ikeda TL, et al. Isolation, culture, characterization and cryopreservation of stem cells derived from amniotic mesenchymal layer and umbilical cord tissue of bovine fetuses. *Pesquisa Veterinária Brasileira*. 2017;37(3):278–286. doi:10.1590/s0100-736x2017000300012
- Mauro A, Turriani M, Ioannoni A, et al. Isolation, characterization, and in vitro differentiation of ovine amniotic stem cells. *Vet Res Commun*. 2010;34(Suppl S1):S25–S28. doi:10.1007/s11259-010-9393-2
- Barboni B, Russo V, Curini V, et al. Gestational stage affects amniotic epithelial cells phenotype, methylation status, immunomodulatory and stemness properties. *Stem Cell Rev Rep*. 2014;10(5):725–741. doi:10.1007/s12015-014-9519-y
- Lange-Consiglio UM, Corradetti B, Bizzaro D, et al. Characterization and potential applications of progenitor-like cells isolated from horse amniotic membrane. *J Tissue Eng Regen Med*. 2012;6(8):622–35.
- Marcus AJ, Coyne TM, Rauch J, Woodbury D, Black IB. Isolation, characterization, and differentiation of stem cells derived from the rat amniotic membrane. *Differentiation*. 2008;76(2):130–44.
- Borghesi J, Mario LC, Carreira AC, Miglino MA, Favaron PO. Phenotype and multipotency of rabbit (*Oryctolagus cuniculus*) amniotic stem cells. *Stem Cell Res Ther*. 2017;8(1):7. doi:10.1186/s13287-016-0468-z
- Ma C, Wang K, Ji H, et al. Multilineage potential research of Beijing duck amniotic mesenchymal stem cells. *Cell Tissue Bank*. 2018;19(4):519–529. doi:10.1007/s10561-018-9701-6

17. Parolini O, Caruso M. Review: preclinical studies on placenta-derived cells and amniotic membrane: an update. *Placenta*. 2011;32(Suppl 2):S186–S195. doi:10.1016/j.placenta.2010.12.016
18. Cremonesi F, Corradetti B, Consiglio AL. Fetal adnexa derived stem cells from domestic animal: progress and perspectives. *Theriogenology*. 2011;75(8):1400–1415. doi:10.1016/j.theriogenology.2010.12.032
19. Iacono E, Rossi B, Merlo B. Stem cells from fetal adnexa and fluid in domestic animals: an update on their features and clinical application. *Reprod Domest Anim*. 2015;50(3):353–64.
20. Miki T. A rational strategy for the use of amniotic epithelial stem cell therapy for liver diseases. *Stem Cells Transl Med*. 2016;5(4):405–9.
21. Karimineko S, Movassaghpour A, Rahimzadeh A, Talebi M, Shamsasenjan K, Akbarzadeh A. Implications of mesenchymal stem cells in regenerative medicine. *Artif Cells Nanomed Biotechnol*. 2016;44(3):749–57.
22. Rasmusson I, Uhlin M, Le Blanc K, Levitsk V. Mesenchymal stem cells fail to trigger effector functions of cytotoxic T lymphocytes. *J Leukoc Biol*. 2007;82(4):887–93.
23. Marti LC, Ribeiro AAF, Hamerschlag N. Immunomodulatory effect of mesenchymal stem cells. *Einstein (São Paulo)*. 2011;9(2):224–228. doi:10.1590/s1679-45082011rw1843
24. Saulnier N, Loriau J, Febre M, et al. Canine placenta: a promising potential source of highly proliferative and immunomodulatory mesenchymal stromal cells? *Vet Immunol Immunopathol*. 2016;171:47–55.
25. Russell KA, Chow NH, Dukoff D, et al. Characterization and immunomodulatory effects of canine adipose tissue- and bone marrow-derived mesenchymal stromal cells. *PLoS One*. 2016;11(12):e0167442. doi:10.1371/journal.pone.0167442
26. Bydlowski SP, Debes AA, Maselli LMF, Janz FL. Características biológicas das CT mesenquimais [Biological characteristics of mesenchymal stem cells]. *Rev Bras Hematol Hemoter*. 2009;31(Suppl1):S25–S35. doi:10.1590/S1516-84842009005000038
27. Lockhart JA. An interpretation of cell growth curves. *Plant Physiol*. 1971;48(3):245–248. doi:10.1104/pp.48.3.245
28. Lee WS, Suzuki Y, Graves SS, et al. Canine bone marrow-derived mesenchymal stromal cells suppress alloreactive lymphocyte proliferation in vitro but fail to enhance engraftment in canine bone marrow transplantation. *Biol Blood Marrow Transplant*. 2011;17(4):465–75.
29. Iida G, Asano K, Seki M, et al. Gene expression of growth factors and growth factor receptors for potential targeted therapy of canine hepatocellular carcinoma. *J Vet Med Sci*. 2014;76(2):301–6.
30. Wenceslau CV, Miglino MA, Martins DS, et al. Mesenchymal progenitor cells from canine fetal tissues: yolk sac, liver, and bone marrow. *Tissue Eng Part A*. 2011;17(17–18):2165–2176. doi:10.1089/ten.tea.2010.0678
31. Taghi GM, Mariam HGK, Taghi L, Leili H, Leyla M. Characterization of in vitro cultured bone marrow and adipose tissue-derived mesenchymal stem cells and their ability to express neurotrophic factors. *Cell Biol Int*. 2012;36(12):1239–1249. doi:10.1042/CBI20110618
32. Yamahara K, Harada K, Ohshima M, et al. Comparison of angiogenic, cytoprotective, and immunosuppressive properties of human amnion- and chorion-derived mesenchymal stem cells. *PLoS One*. 2014;9(2):e88319. doi:10.1371/journal.pone.0088319
33. Vita BD, Campos LL, Listoni AJ, et al. Anexos fetais: uma fonte alternativa de CT mesenquimais para a medicina veterinária equina [Fetal annexes: an alternative source of mesenchymal stem cells for equine veterinary medicine]. *Veterinária e Zootecnia*. 2012;19(1):8–22.
34. Aggarwal S, Pittenger MF. Human mesenchymal stem cells modulate allogeneic immune cell responses. *Blood*. 2005;105(4):1815–22.
35. Krampera M, Galipeau J, Shi Y, Tarte K, Sensebe L. Immunological characterization of multipotent mesenchymal stromal cells -The International Society for Cellular Therapy (ISCT) working proposal. *Cytotherapy*. 2013;15(9):1054–61.
36. Krampera M, Cosmi L, Angelini R, et al. Role for interferon-gamma in the immunomodulatory activity of human bone marrow mesenchymal stem cells. *Stem Cells*. 2006;24(2):386–98.
37. Wheat WH, Chow L, Kurihara JN, et al. Suppression of canine dendritic cell activation/maturation and inflammatory cytokine release by mesenchymal stem cells occurs through multiple distinct biochemical pathways. *Stem Cells Dev*. 2017;26(4):249–62.
38. Munn DH, Zhou M, Attwood JT, et al. Prevention of allogeneic fetal rejection by tryptophan catabolism. *Science*. 1998;281(5380):1191–1193. doi:10.1126/science.281.5380.1191
39. Mellor AL, Sivakumar J, Chandler P, et al. Prevention of T cell-driven complement activation and inflammation by tryptophan catabolism during pregnancy. *Nat Immunol*. 2001;2(1):64–68. doi:10.1038/83183
40. Silini AR, Magatti M, Cargnoni A, Parolini O. Is immune modulation the mechanism underlying the beneficial effects of amniotic cells and their derivatives in regenerative medicine? *Cell Transplant*. 2017;26(4):531–9.
41. Koizumi NJ, Inatomi TJ, Sotozono CJ, Fullwood NJ, Quantoc AJ, Kinoshita S. Growth factor mRNA and protein in preserved human amniotic membrane. *Curr Eye Res*. 2000;20(3):173–177. doi:10.1076/0271-3683(200003)2031-9FT173
42. Kang JW, Kang KS, Koo HC, Park JR, Choi EW, Park YH. Soluble factors-mediated immunomodulatory effects of canine adipose tissue-derived mesenchymal stem cells. *Stem Cells Dev*. 2008;17(4):681–694. doi:10.1089/scd.2007.0153
43. Izumi M, Pazin BJ, Minervin CF, et al. Quantitative comparison of stem cell marker-positive cells in fetal and term human amnion. *J Reprod Immunol*. 2009;81(1):39–43.
44. Rossi D, Pianta S, Magatti M, Sedlmayr P, Parolini O, Rojas M. Characterization of the conditioned medium from amniotic membrane cells: prostaglandins as key effectors of its immunomodulatory activity. *PLoS One*. 2012;7(10):e46956. doi:10.1371/journal.pone.0046956
45. Di Nicola M, Carlo-Stella C, Magni M, et al. Human bone marrow stromal cells suppress T-lymphocyte proliferation induced by cellular or nonspecific mitogenic stimuli. *Blood*. 2002;99(10):3838–3843. doi:10.1182/blood.V99.10.3838
46. Ren G, Su J, Zhang L, et al. Species variation in the mechanisms of mesenchymal stem cell-mediated immunosuppression. *Stem Cells*. 2009;27(8):1954–1962. doi:10.1002/stem.118
47. Ambrosio CE, Orlandin JR, Oliveira VC, et al. Potential application of amniotic stem cells in veterinary medicine. *Anim Reprod*. 2019;16(1):24–30. doi:10.21451/1984-3143-AR2018-0124
48. Gonçalves NJN, Bressan FF, Roballo KCS, et al. Generation of LIF-independent induced pluripotent stem cells from canine fetal fibroblasts. *Theriogenology*. 2017;92:75–82. doi:10.1016/j.theriogenology.2017.01.013
49. Kowalewski MP, Beceriklisoyb HB, Aslanb S, Agaoglu AR, Hoffmann B. Time related changes in luteal prostaglandin synthesis and steroidogenic capacity during pregnancy, normal and antiprogesterin induced luteolysis in the bitch. *Anim Reprod Science*. 2009;116(1-2):129–138. doi:10.1016/j.anireprosci.2008
50. Souza AF, Pieri NCG, Roballo KCS, et al. Dynamics of male canine germ cell development. *PLoS One*. 2018;13(2):e0193026. doi:10.1371/journal.pone.0193026



## Stem Cells and Cloning: Advances and Applications

Dovepress

### Publish your work in this journal

Stem Cells and Cloning: Advances and Applications is an international, peer-reviewed, open access journal. Areas of interest in established and emerging concepts in stem cell research include: Embryonic cell stems; Adult stem cells; Blastocysts; Cordblood stem cells; Stem cell transformation and culture; Therapeutic cloning; Umbilical cord blood and bone marrow cells; Laboratory,

animal and human therapeutic studies; Philosophical and ethical issues related to stem cell research. This journal is indexed on CAS. The manuscript management system is completely online and includes a very quick and fair peer-review system, which is all easy to use. Visit <http://www.dovepress.com/testimonials.php> to read real quotes from published authors.

Submit your manuscript here: <https://www.dovepress.com/stem-cells-and-cloning-advances-and-applications-journal>