

Review

Open Access

## Biology of primate relaxin: A paracrine signal in early pregnancy?

Eric S Hayes\*

Address: The Washington National Primate Research Center, The University of Washington, Box 357331, Seattle, WA 98195, USA

Email: Eric S Hayes\* - ehayes@bart.rprc.washington.edu

\* Corresponding author

Published: 16 June 2004

Received: 14 April 2004

*Reproductive Biology and Endocrinology* 2004, 2:36 doi:10.1186/1477-7827-2-36

Accepted: 16 June 2004

This article is available from: <http://www.rbej.com/content/2/1/36>

© 2004 Hayes; licensee BioMed Central Ltd. This is an Open Access article: verbatim copying and redistribution of this article are permitted in all media for any purpose, provided this notice is preserved along with the article's original URL.

### Abstract

Relaxin is a peptide hormone that exerts numerous effects in a variety of tissues across a broad range of species. Although first identified more than 75 years ago interest in relaxin biology has waxed and waned over the years consistent with peaks and troughs of new experimental data on its wide-ranging biological effects and advances in relaxin enabling technologies. Recent insights into species-dependent differences in relaxin biology during pregnancy have once again stimulated a relative surge of interest in the study of relaxin's reproductive biology. Identification and pharmacological characterization of orphaned relaxin receptors and exploration of its paracrine effects on pregnancy using genomic and proteomic technologies have succeeded in fueling current interest in relaxin research. Primates and non-primate vertebrates exhibit very disparate profiles of relaxin genomics, proteomics and functional biology. Non-human primates appear to exhibit a very close similarity to humans with respect to relaxin reproductive biology but the similarities and subtle differences are only just beginning to be understood. We, and others, have shown that relaxin produces significant changes to the non-human primate endometrium during the peri-implantation period that are consistent with relaxin's long perceived role as a paracrine modulator of pregnancy. The purpose of this review is to summarize the reproductive biology of relaxin in non-human primates with a specific emphasis on the paracrine role of ovarian and endometrial relaxin during embryo implantation and early pregnancy.

### Review – Relaxin genetics and protein structure

The relaxin and relaxin-like peptides have been described in a broad range of non-primate vertebrates including mouse [1], rat [2], dog [3], pig [4], wallaby [5], horse [6] and camel [7]. Three very elegant descriptions of the molecular phylogenetics of primate relaxin can be found elsewhere [8-10]. Relaxin, relaxin-like factor (Insulin 3, INSL 3) and closely related insulin family genes are distributed on chromosomes 1, 9 and 19 in the human genome [5,11]. To date three human relaxin genes have been identified compared to two relaxin genes in the great apes, and a single relaxin gene in old and new world monkeys [8,12]. Two of the human relaxin genes (H1 and H2) are found at a single locus on chromosome 9 (9p24.1)

whereas the H3 gene is located on chromosome 19 (19p13) [13,14]. The great ape relaxin genes are equivalent to human H1 and H2 but the great ape equivalent of H3 has not yet been discovered. H1 and the great ape equivalents are believed to have arisen through gene duplication of H2 and its equivalent great ape gene [14]. Chromosomal locations for non-human primate relaxin genes have not been reported. Both H1 and H2 gene products have been demonstrated in human reproductive tissues but specific pregnancy-related biological roles for these gene products have not been described [15].

Relaxin is synthesized and secreted as a preprohormone containing a signal peptide and B-, C- and A-domains

**Table 1: Various interspecies biological effects of relaxins relevant to known physiological actions.**

Relaxin Species <sup>a</sup>	Test species/system	Biological effect	Reference
Human	Adult NHP	↑ Prolactin and growth hormone secretion	[186]
	Neonatal NHP uterine cells	↑ cAMP production	[187]
	Prepubertal pig	↑ E-cadherin expression and uterine epithelial cell growth	[18]
	Non-pregnant rat myometrium	↓ Vassopressin induced contraction	[189]
	Rat uterine artery	↑ Nitric oxide production	[190]
	Rat kidney	↓ Phenylephrine induced contraction ↑ Glomerular filtration rate ↓ Renal vascular resistance	[191]
	Mouse endometrial stromal cells	↑ Protein synthesis ↑ Laminin production	[192]
Marmoset	Human stromal cells, THP-1 monocytes	↑ cAMP production	[21]
Porcine	Rat	↑ Uterine/body weight ratio	[193]
	Mouse	↑ interpubic ligament length	[194]
Guinea Pig	Adult NHP endometrium	↑ Thickness ↑ Vascularization	[141]
Wallaby	Human THP-1 monocytes	↑ cAMP production	[5]

<sup>a</sup> = native, synthetic or prohormone. cAMP = cyclic adenosine monophosphate, NHP = non-human primate.

respectively arranged from N- to C-termini [10]. Cleavage of the prohormone signal peptide and C-domain is carried out by tissue convertases and produces the mature relaxin hormone [16,17]. The mature hormone, arranged as an A-B domain heterodimer exhibits three disulfide bonds and opposing supportive  $\alpha$ -helices in the A-domain. Conserved arginine residues on the B-domain that are exposed during convertase-mediated cleavage are important determinants of receptor binding [10]. Biological activities have not been reported for the prohormone, signal peptide or C-domain although the C-domain has been used to characterize sources and sinks for relaxin production and accumulation, respectively [18,19]. Like other prohormones (e.g. pro-islet amyloid polypeptide, [20]), the primate relaxin prohormone is biologically active but the physiological significance of this ligand has not been fully elucidated [13,21,22].

The homology of relaxin A- and B-domains is lower and more variable amongst human and non-human primates compared to the homology of relaxin-like factor sequences [8-10]. The rank order of similarity in great ape relaxin sequences compared to H1 relaxin are Gorilla > Chimpanzee > Orangutan (A- and B-domain). Great ape A-domain sequences exhibit uniform differences compared to H2 relaxin and a rank order of similarity of Chimpanzee > Gorilla > Orangutan compared to H2 B-domain sequences [8]. Old and new world monkey relaxins exhibit lower homology to human sequences compared to great apes, and exhibit a higher variance in B-versus A-domain homology compared with human sequences. The functional significance of the differences

in relaxin sequence homology across species is not readily apparent given the demonstrable interspecies biological activity of relaxin molecules (Table 1). Despite the observed variation in sequence homology, the receptor-binding domain is a highly conserved motif consisting of two arginine residues and one isoleucine residue [10].

Splice variants of relaxin have been demonstrated in humans but the peptides produced by these variants have not yet been isolated and tested for biological activity [23]. Recent evidence suggests that CT and GT dinucleotide polymorphisms in the transcriptional control regions of H1 and H2 exist, exhibit protein-DNA binding interactions that increase with repeat expansion and may support transcriptional regulation of the two genes [15]. These studies may have implications for disorders where abnormal levels of relaxin are thought to be associated with a specific reproductive pathology (e.g. pre-term labor [24]). The H1 and H2 relaxin genes both exhibit zinc and mineralocorticoid response elements whereas only the H2 gene exhibits NF $\kappa$ B and glucocorticoid response elements. Furthermore, the H1 and H2 genes exhibit different combinations of AP-1 and SP-1 steroid hormone and gonadotrophin dependent response sites [24-27] thus suggesting that gene expression may be regulated differently in the presence or absence of different hormones. Functional steroid hormone or gonadotrophin response sites have not yet been described for non-human primate relaxin genes.

**Table 2: Binding characteristics of recombinant human relaxin at putative binding sites and intracellular signals affected.**

Cell Type	K <sub>d</sub> (nM)/# binding sites per cell *	Intracellular signal or Biological Effect	Reference
Human THP-1 Monocytes	0.102/275	↑ cAMP	[195]
Human Uterine Fibroblast	4.4 ± 1.7/3220 ± 557	↑ Extracellular acidification	[196]
Human Uterine Epithelial Cells	0.44/1082 ± 62	↑ Tyrosine phosphorylation	[28]
Human Endometrial Stromal Cells	0.150/963–1000	NA	[103]
		↑ p42/44 MAPK activity	[119]
		↑ Activation of CREB	[197]
		↑ VEGF expression	
		↑ cAMP	
Human Sperm	0.650/NA	↑ Prolactin gene expression	[198]
		↑ Sperm motility	
		↑ Acrosome reaction	
Human Granulosa Cells	NA	↑ Release of calcium from intracellular stores	[199]

cAMP = cyclic adenosine monophosphate; CREB = cAMP response element binding protein; MAPK, mitogen-activated protein kinase; NA = data not available; VEGF = vascular endothelial growth factor. The asterisk (\*) indicates that reported estimates for K<sub>d</sub> values may be different due to tissue and radioligand differences, or both.

### Relaxin receptors and signal transduction

A number of studies have indicated binding sites for primate relaxin in the corpus luteum, endometrial glandular epithelium, decidua and placenta [28-32]. However, relaxin receptors (LGR7 and LGR8) remained orphaned from their peptide until very recently and have now been characterized pharmacologically in vitro [33]. The relaxin receptors are G-protein coupled receptors with 7-transmembrane spanning domains, a long extracellular sequence containing a series of leucine-rich repeats and an N-terminal ectodomain [33,34]. The receptors belong to a family of glycoprotein hormone receptors including follicle stimulating and luteinizing hormones and, thyroid-stimulating hormone [11]. Pharmacological evidence indicates that LGR7/8 can discriminate H2 and H3 relaxin with H2 and porcine relaxin being effective at both receptors whereas H3 is effective at the LGR7 receptor only [34,35]. Relaxin exhibits greater potency and efficacy as an agonist at LGR7 compared to LGR8 [33-35]. LGR7/8 have both recently been identified in human and non-human primate endometrium [36,37].

Some of the binding characteristics and intracellular signal transduction mechanisms involved in relaxin receptor occupancy, and other cellular mechanisms activated by relaxin are listed in Tables 1 and 2. In reproductive tissues relaxin appears to be tightly coupled to cAMP metabolism (activation of adenylate cyclase, activation of protein kinase A and inhibition of phosphodiesterase) but also exhibits cell type specific signal transduction mechanisms that involve nitric oxide, phospholipid dependent signaling and ion channel regulation [38-40]. All of these signal transduction mechanisms are consistent with the known physiology of relaxin in a broad range of cell types. The effects of relaxin on cAMP metabolism are highly relevant to its role in early implantation and pregnancy in primates

(see below). The physical and pharmacological characterization of relaxin receptors in tissues of the murine, non-human primate and human female reproductive tracts represent significant advances in relaxin research and should precipitate the development of selective relaxin agonists and antagonists for use in functional studies of the specific effects of relaxin during implantation and pregnancy in primates.

### Ovarian relaxin secretion and functional regulation

Relaxin is produced in significant quantities in human and non-human primate ovaries during the luteal phase [24,41]. The non-human primate corpus luteum of natural non-conceptive cycles produces relaxin that rises to a peak within approximately 14 days of ovulation and declines following demise of the corpus luteum. In pregnant cycles, rather than subsiding, relaxin secretion continues to rise during the first trimester consistent with rescue of the corpus luteum and formation of a functional placenta [42,43]. The characteristics of relaxin secretion following ovulation in humans and some non-human primate species are listed in Table 3. Marmosets exhibit serum relaxin profiles that are clearly distinguishable from great apes, old world monkeys and rodents [[44], references in Table 3]. These differences could possibly be related to the distinct differences in anatomy and physiology of marmoset embryo implantation and parity compared to macaques and great apes on one hand and rodents on the other [45,46]. However, experiments demonstrating a direct link between variations in relaxin secretion profiles in different non-human primate species and variations in the physiology of implantation and pregnancy have not been described.

**Table 3: Characteristics of relaxin secretion in non-pregnant and pregnant cycles of humans and selected non-human primate species.**

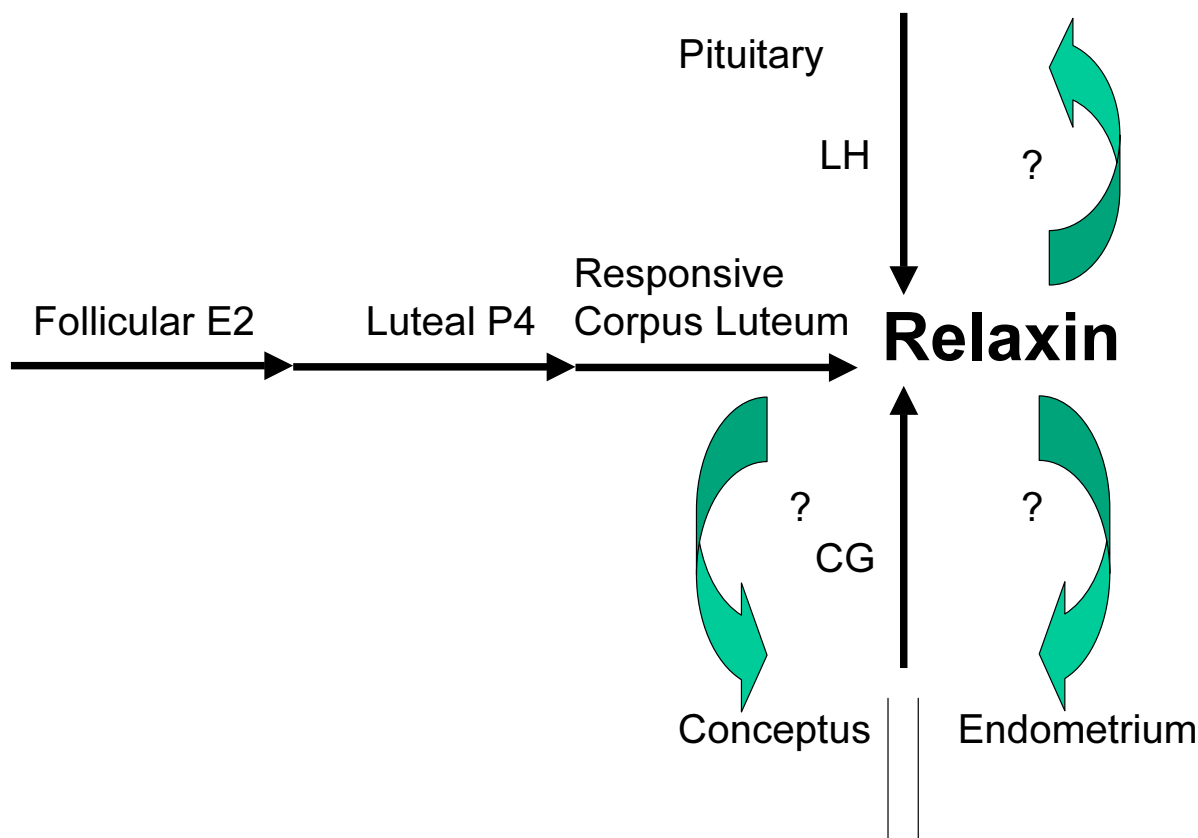
Species	Days to peak serum relaxin concentrations (Ovulation = D0)	Peak serum relaxin concentrations (ng/ml)	Normal term gestation (Days)	Reference
<b>Human</b>				
Non-pregnant cycle	10	0.06		[200]
Pregnant cycle	56–77	1.0–3.5	280	[201]
<b>Chimpanzee</b>				
Non-pregnant cycle	8–13	0.15–1.40		[202]
Pregnant cycle	30	2.0	230	[202]
<b>Baboon</b>				
Non-pregnant cycle	12	0.45		[48]
Pregnant cycle	25–35	1.0–1.5	177	[203]
<b>Rhesus macaque</b>				
Non-pregnant cycle	13	0.05		[204]
Pregnant cycle	45–60	1.0–1.5	165	[43]
<b>Cynomolgus macaque</b>				
Non-pregnant cycle	16	0.03		[43]
Pregnant cycle	45–60	1.0–1.5	165	[43]
<b>Common marmoset</b>				
Non-pregnant cycle	10–11	1.0–2.5		[205]
Pregnant cycle	84–98	12.0–16.0	155	[51]

Several lines of experimental evidence suggest that circulating levels of relaxin may not be suitable markers for the full biological impact of this hormone, and that local synthesis and release of relaxin may be highly relevant to its biological effects, particularly those effects related to embryo implantation and pregnancy. First, many early relaxin hormone assay systems were developed using synthetic H2-relaxin [47] and negligible H2 antibody cross reactivity to H1 and H3 relaxins has been demonstrated [13]. Therefore, in many of the early studies detailing relaxin secretion, circulating levels of total relaxin may have been underestimated compared to H2. Second, circulating relaxin levels are often much lower than blood or tissue levels within specific organs [48]. Third, circulating relaxin levels in steroid hormone supplemented patients undergoing ovum donation cycles remain below the limits of detection despite successful pregnancy [49]. Non-human primates subjected to ovariectomy also maintain pregnancy when supplemented with steroid hormones [48,50]. Finally, unlike some non-primate vertebrates, circulating levels of relaxin in primates are not maintained during steroid hormone supplemented pregnancy in the absence of ovaries [51–53]. Taken together these observations indicate that the primate ovary may be responsible for the majority of circulating relaxin but elevated levels of circulating relaxin may not be necessary for embryo implantation or maintenance of pregnancy in primates.

The functional regulation of relaxin secretion in primates is complex and very poorly understood. Measurements of

relaxin in ovarian cycles and throughout pregnancy indicate, in agreement with histological studies, that the ovary and uterus produce relaxin in a manner that is dependent upon steroid hormone and/or gonadotrophin secretion, and that pituitary-ovarian-uterine feedback mechanisms may exist [48,54,55]. Because the corpus luteum and pre-placental endometrium are important regulators of early implantation in natural conceptive cycles the functional regulation of relaxin secretion in these tissues will be discussed but will be limited to a summary of the effects of steroid hormones and gonadotrophins. Very detailed reviews of non-human primate corpus luteum function and regulation can be found elsewhere [54,56].

Ovarian relaxin is clearly a hormone of the luteal phase of non-conceptive cycles and early pregnancy in old world monkeys, great apes and humans (Table 3). A series of very elegant studies in rhesus macaques have demonstrated steroid hormone and gonadotrophin-mediated regulation of ovarian relaxin secretion [57–60]. The data from those studies clearly indicate that ovarian relaxin secretion very closely parallels the time-course of the rise of circulating chorionic gonadotrophin (CG), that luteal secretion of ovarian relaxin is not dependent upon progesterone ( $P_4$ ) or estrogen ( $E_2$ ) and that ovarian relaxin secretion produced by administration of exogenous human CG (hCG) is dependent upon sufficient ovarian exposure to  $E_2$  and  $P_4$  prior to hCG exposure [57,58]. The effects of chronic hCG administration on ovarian relaxin secretion *in vivo* are recapitulated on



**Figure 1**  
**Relaxin secretion from the primate corpus luteum** Describes the sequential nature of steroid hormone priming of relaxin secretion from the primate corpus luteum and gonadotrophin influences from the pituitary and conceptus. Potential undocumented feedback mechanisms are indicated (?). LH, luteinizing hormone; CG, chorionic gonadotrophin.

chronic exposure, but not acute exposure, of luteal cells to hCG *in vitro*, thus suggesting a need for the continued presence of hCG to maintain ovarian relaxin secretion in primates [61,62]. A wealth of studies in a broad range of species including primates indicate a functional interaction between steroid hormones and gonadotrophins in determination of corpus luteum function and life span [56,63], two variables that directly effect ovarian relaxin secretion. It follows, and not surprisingly, that conceptive cycles rely on a sequential and dynamic interaction of steroid and gonadotrophin hormones to produce functional secretion of ovarian relaxin [43,58]. A potential role for ovarian relaxin as a luteotrophic agent is suggested by experiments in rats demonstrating a relaxin-dependent

increase in pituitary luteinizing hormone (LH) release but only in the presence of combined E<sub>2</sub> and P<sub>4</sub> priming [55]. Studies in domestic species also indicate a potential luteotrophic action of ovarian relaxin during the early stages of pregnancy possibly mediated by enhanced secretion of P<sub>4</sub> [64]. Whether or not primate relaxin produces a functional regulation of ovarian steroidogenesis, feedback regulation of pituitary gonadotrophin secretion and/or feedback regulation of uterine and conceptus gene expression during menstrual and conceptive cycles remains to be determined (Figure 1). Use of selective relaxin agonists and antagonists, or the application of relaxin ablation experiments, in primate models of corpus luteum function will be necessary to demonstrate potential autocrine/

paracrine/endocrine control mechanisms for ovarian relaxin.

That ovarian relaxin is not required for successful term pregnancy in primates is suggested by several independent lines of clinical and experimental evidence indicating that pregnancies can be initiated and maintained: (i) in humans with premature ovarian failure, a sub population of infertility patients who fail to develop a corpus luteum and, presumably, ovarian relaxin [49], (ii) in baboons subjected to unilateral removal of the corpus luteum bearing ovary following establishment of a functional placenta [48], (iii) in macaques subjected to bilateral ovariectomy at embryo transfer, prior to establishment of a placenta [50] and (iv) in marmosets subjected to prostaglandin F<sub>2</sub> $\alpha$ -mediated luteolysis in mid-pregnancy [51]. The results of these studies indicate that pregnancies can be maintained in the absence of a functional luteal phase ovary provided that steroid hormone supplementation is provided. Pregnancies subjected to the removal of the corpus luteum bearing ovary during pregnancy, after steroid production has shifted to a placental source, do not require steroid hormone supplementation. Taken together these observations clearly indicate that uterine exposure to steroid hormones, but not ovarian relaxin, is necessary and sufficient for implantation and on-going pregnancy in primates. Although ovarian relaxin appears to be unnecessary for term pregnancy in primates its potential role in proper corpus luteum function during natural cycles should not be discounted and requires further study.

### **Relaxin and paracrine modulation of embryo implantation and pregnancy**

Ovarian relaxin is not required for pregnancy in primates but relaxin is secreted from the primate syncytiotrophoblast and glandular endometrium [41,65] in a manner that may be up-regulated in the absence of ovaries [48]. Then what role, if any, does embryonic/endometrial relaxin play during implantation and pregnancy in primates? Unfortunately it is not possible to answer this question directly as selective relaxin receptor agonists and antagonists have not been employed in models capable of providing an answer. Furthermore, key relaxin ablation experiments have not yet been performed in non-human primate models of pregnancy. However, it is possible to demonstrate effects of relaxin on the endometrium that are consistent with a paracrine mode of action during embryo implantation and pregnancy. Embryo-endometrial recognition, decidualization of endometrial stromal cells, embryonic vascularization and avoidance of maternal immune recognition are all very important aspects of embryo implantation and will be used as platforms for discussion of relaxin's potential paracrine actions in early pregnancy in primates.

### **Embryo-endometrial recognition**

The molecular mechanisms that mediate embryo-endometrial communication in primates are incompletely understood [66]. However, studies of embryo-endometrial communication in species where larger numbers of embryos can be created and used experimentally indicate that such a communication does exist [67]. Embryonic and uterine expression of insulin growth factors (IGF's) and insulin growth factor binding proteins (IGFBP's) represent some of the earliest markers of implantation in primates and other mammalian species [68-70]. Studies in mice indicate that IGFBP-1 mRNA expression in uterine stromal cells and embryos cultured in isolation is static during pre-implantation embryo development *in vitro* but is up-regulated in stromal cells cultured in the presence of developing embryos [69]. Up-regulation of IGFBP mRNA expression in mouse embryos exposed to human endometrial stromal cells and relaxin has been demonstrated [71]. IGF's are secreted from the endometrium and differentially effect expression of IGF receptors and IGFBP's in preimplantation bovine embryos *in vitro* [70]. In primates IGFBP mRNA is expressed in embryos at all stages of preimplantation development but increases sharply at the blastocysts stage and coincides with embryonic implantation competence [72,73]. Taken together these studies indicate that embryo-endometrial communication takes place prior to full implantation competence, and that soluble factors secreted by both the embryo and endometrium can alter gene expression in their counterpart [74].

Marmoset embryos cultured *in vitro* secrete a substance into culture medium, prior to the appearance of detectable CG and implantation competence, which reduces platelet number and aggregation *in vivo* [75,76]. Relaxin suppresses the release of platelets from megakaryocytes and reduces platelet aggregation *in vivo* and *in vitro* [77]. Given that relaxin receptors are expressed in the primate endometrium during the peri-implantation period it is tempting to speculate that embryonic relaxin could function as a paracrine signal of implantation before embryo-endometrial attachment takes place. However, to our knowledge, studies detailing the expression and functional regulation of relaxin genes in primate embryos have not been reported. The presence of relaxin gene transcripts in the primate endometrium prior to embryo implantation [15,65] indicates that endometrial relaxin genes could also be targets for embryonic signaling factors during the peri-implantation period. Rabbit blastocysts induce endometrial secretion of relaxin prior to implantation and the secretion is maintained by the conceptus throughout the remainder of gestation [78]. The factor(s) that mediate blastocyst initiation of endometrial relaxin secretion in the rabbit have not been identified. Again, to our knowledge, similar studies detailing blastocyst-medi-

ated regulation of endometrial relaxin secretion in primates have not been reported. Chorionic gonadotrophin is a primate specific embryonic signal of early implantation [76,79] that produces a significant up-regulation of relaxin secretion in the primate ovary [58], and therefore could potentially regulate endometrial relaxin secretion in primates. However, to our knowledge, studies demonstrating CG-mediated regulation of endometrial relaxin secretion in primates have also not been reported. Further investigations of primate embryonic factors that modulate uterine relaxin secretion and uterine signals that regulate embryonic relaxin gene expression will be important to the field of relaxin reproductive biology.

### **Decidualization of endometrial stromal cells**

As mentioned above, CG, like IGFBP-1, is one of the earliest embryonic signals secreted during the peri-implantation period and produces profound changes in the secretory nature of both the corpus luteum and the endometrium [56,80,81]. Plaque formation at the site of embryo apposition and attachment and decidualization of maternal endometrial stromal cells are driven by CG and its down stream effectors, and represent two very important events in early pregnancy [79]. Some of the CG-dependent endometrial signals required for plaque formation and decidualization have been demonstrated using very elegant *in vitro* and *in vivo* models of early implantation in the baboon [82-84]. When CG is administered to ovariectomized baboons treated with E<sub>2</sub> and P<sub>4</sub> in a manner designed to mimic a natural cycle the CG-mediated decidualization reaction is found throughout the entire endometrium [84]. In contrast, *in vivo* in the presence of a conceptus, the plaque formation and decidualization reactions are restricted to the site of embryo attachment [84,85]. Therefore, it appears that the CG-mediated plaque formation and decidualization responses in primates are specific conceptus-driven signals, and that paracrine factors associated with this response may be responsible for limitation of the reaction to specific areas despite high circulating levels of CG [84]. Although CG is a primate specific signal of implantation studies of embryo attachment in rabbits have also demonstrated a conceptus-mediated restriction of implantation events to areas where direct embryo-endometrial cell-cell contact occurs [86]. Furthermore, in the rabbit model, conceptus-driven endometrial relaxin secretion is also restricted to implantation sites [78] thus suggesting a local paracrine effect of relaxin at the site of embryo attachment and implantation. The effects of CG on decidualization of primate endometrial stromal cells are enhanced by the presence of steroid hormones and relaxin [83,87,88]. It is also clear from studies in humans and the baboon that steroid hormones are necessary and sufficient to elicit decidualization of endometrial stromal cells whereas relaxin, in the absence of steroid hormones, is not suffi-

cient for the complete decidualization reaction to occur [88-90]. Detailed studies of relaxin transcripts in human endometrium in pregnant and non-pregnant cycles clearly indicated that relaxin expression preceded the expression of IGFBP-1 and prolactin [91], two classical markers of decidualization [92], and strongly suggest a non-redundant paracrine role for primate relaxin during the peri-implantation period. Further studies detailing potential links between CG and endometrial relaxin secretion in non-human primate models are needed.

Experimental observations indicate that in the presence of adequate steroid hormone priming the decidualization of endometrial stromal cells is heavily regulated by cAMP-dependent mechanisms [72,90,93,94]. In rodents non-conceptus mediated decidualization stimuli produce increases in cellular cAMP content through activation of adenylate cyclase, which in turn modifies its own micro-environment so as to remain impervious to inhibitory influences [95]. Conversely, inhibition of adenylate cyclase reduces cAMP production and prevents adequate decidualization of rat stromal cells *in vitro* [96]. In humans accumulation of cAMP within endometrial biopsies is greater during the luteal phase compared to the follicular phase [97]. Levels of cAMP required for decidualization of primate endometrial cells may be maintained in the absence of classic regulators of adenylate cyclase (e.g. LH/hCG) if gonadotrophin-induced paracrine effectors have been activated and appropriate steroid hormone exposure is maintained [81,98]. Interleukin-1 $\beta$ , prostaglandin E<sub>2</sub> and relaxin are just a few representatives of a large group of paracrine signals that modulate cAMP signaling in the primate endometrium [79,98,99].

In an *in vitro* setting baboon and human endometrial cells undergo decidualization in the presence of E<sub>2</sub> and P<sub>4</sub> and this reaction is enhanced by the addition of relaxin [100]. The intracellular signaling mechanism(s) responsible for relaxin-mediated enhancement of the decidualization process appear to be cAMP-dependent. Transfected cells expressing the relaxin receptors LGR7/8 respond to porcine relaxin by producing large increases in intracellular cAMP. The same responses are not observed in the presence of relaxin related peptides such as insulin [35,101]. Relaxin also stimulates cAMP production in the mouse pubic symphysis (a classic model of relaxin pharmacology) in a manner that is prevented by previous exposure of relaxin to dithiothreitol or monoclonal antibodies [102]. The effect of relaxin on cAMP production and decidualization in human endometrial stromal cells *in vitro* is enhanced by concomitant inhibition of specific isoforms of phosphodiesterase [103]. The same authors also demonstrated that progesterone and relaxin alone do not stimulate cAMP production or up-regulate the expres-

sion of markers of decidualization (e.g. IGFBP-1 and prolactin). Human endometrial cells exposed to relaxin in the presence of a phosphodiesterase inhibitor produced markedly elevated cAMP levels and up-regulated expression of both IGFBP-1 and prolactin genes whereas progesterone, under the same conditions, produced a very limited increase in cAMP production and up-regulated prolactin gene expression only [103]. Exposure of human endometrial stromal cells and THP-1 monocytes to relaxin also resulted in an elevation of intracellular cAMP that the authors suggested was mediated in part by relaxin mediated tyrosine kinase signaling and inhibition of phosphodiesterase activity [104]. Taken together these results suggest that progesterone and relaxin can synergize to affect significant and sustained increases in intracellular cAMP, an essential part of the decidualization process in primate endometrial cells [83,103,104]. Several sensitive control mechanisms exist to regulate relaxin-mediated cAMP accumulation, and thereby implicates cAMP as a prominent mediator of relaxin's paracrine effects in the primate endometrium.

The interactions between steroid hormones, steroid hormone receptors, steroid hormone response elements and intracellular signaling pathways during decidualization of primate endometrial stromal cells involve a number of very complex features including ligand- and receptor-independent modifications of gene expression and significant cross-talk between signaling pathways [105,106]. A detailed discussion of the complex steroid-dependent regulation of decidualization is beyond the scope of this review. However, the interactions between progesterone, progesterone receptors and the cAMP-signaling cascade in endometrial stromal cells have recently been expertly reviewed [98]. Based on the information contained in that work it was clearly demonstrated that cAMP-mediated signaling produces a very sensitive regulation of various progesterone response elements (e.g. C/EBP $\beta$ , Stat5 and FoxO1a) and subsequent regulation of decidual specific gene expression. The *in vitro* and *in vivo* studies cited above and in Table 2 clearly identify relaxin as modulator of cAMP production in the primate endometrium and, by extension, its potential to regulate gene expression during the decidualization process. However, relaxin is only one of many paracrine modulators of cAMP production in the primate endometrium and it remains to be determined whether or not relaxin is a redundant modulator of the decidualization process. Given that relaxin is routinely used in conjunction with E<sub>2</sub> and P<sub>4</sub> to produce morphologically and biochemically relevant decidualization of primate stromal cells in model systems *in vitro* [88,100], it is possible that relaxin is necessary for optimal/clinically relevant decidualization and subsequent placentation *in vivo*.

### Embryo vasculogenesis

Following embryo attachment vascularization of the primate embryo is one of the most important events in early pregnancy [107]. Tapping of the maternal vasculature by the embryo is necessary for survival but at the same time exposes the embryo to the full force of the maternal immune system [108] and to the potential dangers of blood borne component effects on endometrial quiescence [109]. In macaques trophoblastic invasion of the maternal vasculature occurs rapidly (within 2 days of blastocyst attachment) and is marked by syncytiotrophoblast invasion of capillary endometrial cells and cytotrophoblast invasion of superficial arterioles and spiral arteries [110,111]. Syncytio- and cytotrophoblast cells then work in concert to initiate the villous stage of placenta formation and formalization of feto-maternal circulation [112]. The uterus also exhibits profound changes in vascularization during this period and these changes are mediated by factors of trophoblastic origin [113]. CG acting on LH/CG receptors has been shown to produce many of the characteristic changes in trophoblast cell phenotype and uterine vascularization that are required for embryonic recruitment of the primate maternal circulation [114]. Importantly, CG is able to stimulate the expression of one of the most ubiquitous regulators of angiogenesis, vascular endothelial growth factor (VEGF) [115]. In primates, VEGF expression rises during the secretory phase of the cycle, is prominent in syncytiotrophoblast and decidual vascular endometrium and exhibits positive functional regulation by estrogen and progesterone in a steroid receptor-dependent manner [107,116-118]. Like CG, relaxin also stimulates the expression of VEGF in endometrial cells *in vitro* and produces conceptus-like mediated changes of non-human primate maternal vasculature *in vivo* in the absence of a conceptus [112,119].

Formation and maintenance of the vascularized corpus luteum, like the formation and maintenance of the vascularized and receptive endometrium, is also dependent upon angiogenesis and is driven by expression of VEGF and other angiogenic factors such as the angiopoietins [120,121]. In primates, LH and CG appear to be potent regulators of ovarian VEGF expression and promote the vascularization and stabilization of the functional steroid producing corpus luteum [122,123]. As demonstrated above (see Table 3) CG is clearly able to increase corpus luteum derived relaxin secretion (e.g. pregnancy) over and above that produced by sequential exposure to estrogen and progesterone in the absence of CG (e.g. non-pregnant cycle). LH and/or CG may initiate corpus luteum angiogenesis through direct actions and maintain angiogenesis through stimulation of local activators of angiogenesis signaling such as relaxin [122]. Whether or not ovarian relaxin acts as a functional regulator of VEGF and angiogenesis within the primate corpus luteum or has endo-



crine effects on endometrial VEGF expression remains to be determined. Studies detailing a parallel effect of CG on endometrial relaxin secretion similar to that observed in the ovary has not yet been demonstrated in primates. Furthermore, a link between CG and relaxin and functional regulation of VEGF expression in the primate endometrium has not been established. However, given that CG and relaxin both stimulate the expression of VEGF in primate endometrial tissues [114,119], that relaxin expression within the primate endometrium coincides with elevated serum CG levels [91] and that relaxin induces changes in vascularization of the primate endometrium in the absence of conceptus-derived CG [112], it is tempting to speculate that some of the CG-mediated effects on endometrial angiogenesis during implantation in primates could be produced by relaxin. Relaxin may also help to enhance embryonic access to the maternal vasculature through other non-VEGF mediated effects such as reduction of platelet release and aggregation [77] and subsequent reduction in the release of anti-angiogenic factors such as thrombospondin [124], reduction of vascular fibrosis mediated by enhanced expression of tissue plasminogen activator [125,126], enhanced synthesis and secretion of prorenin [127] and direct vasodilation of the endometrial vasculature [reviewed in, [128,129]].

### **Evasion of the maternal immune response**

In order to initiate and maintain contact with the endometrium and maternal circulation the implanting embryo must avoid stimulation of the maternal immune system. This very unique situation is often referred to as the immunological paradox of pregnancy given the large numbers of immune cells present at the fetomaternal interface, and is highly dependent upon the cytokine microenvironment of the endometrium at the time of implantation [130,131]. Progesterone is a powerful immunosuppressant [132] and produces polarization of T-helper (Th) cytokine profiles to the Th2 phenotype at physiologically relevant concentrations [108]. The Th2 phenotype is generally considered necessary for the avoidance of fetal rejection and maintenance of pregnancy [133]. Relaxin also produces biological effects on peripheral blood monocytes that polarize the cytokine profile to the Th1 phenotype, a phenotype that appears at first glance to be inconsistent with a role for relaxin in suppression of a potential maternal immune response against the implanting embryo [134]. Relaxin stimulates the production of interferon-gamma (IFN- $\gamma$ ) and tumor necrosis factor-beta (TNF- $\beta$ ) in peripheral blood monocytes, two cytokines that mediate MHC class II restricted host defenses predominantly through phagocytosis, and are potentially detrimental to implantation and pregnancy [135,136]. Because the embryo is hemiallogenic it is expected that a relaxin-induced Th1 cytokine profile

would be disadvantageous to embryo implantation. However, it should be recognized that the effects of relaxin on peripheral blood mononuclear cells may be advantageous in protecting both the fetus and the mother from opportunistic infection, and that the effects of relaxin on T-lymphocyte mediated cytokine expression at the fetomaternal interface may be quite different to that observed in the general circulation based on the unique hormonal milieu of the pregnant endometrium [108,133]. Indeed, previous reports have demonstrated elevated levels of IFN- $\gamma$  in pregnant women presenting for voluntary abortion compared to non-pregnant women and suggest that elevated IFN- $\gamma$  may be necessary for fetal maintenance, possibly through stimulation of macrophage mediated expression of the cytotoxic T-cell suppressor indoleamine 2,3-dioxygenase [108]. Further support for a positive role of IFN- $\gamma$  during implantation comes from studies with knockout mice that exhibit deficits in the IFN- $\gamma$  signaling cascade and also exhibit deficits in endometrial decidual reactions and fertility [137]. Further studies aimed at describing the effects of relaxin on cytokine expression in primate endometrium will be an important area of investigation relating to relaxin biology in early pregnancy.

### **Exogenous relaxin administration in a non-human primate model of pregnancy: Implications for human assisted reproductive technology**

As described above, relaxin exhibits key attributes of a paracrine regulator of implantation in primates: relaxin secretion increases during the mid-late luteal phase of the non-pregnant cycle and continues to rise throughout the first trimester in early pregnancy [42], tissue specific production of relaxin is up- or down-regulated in a steroid dependent manner during early and late pregnancy [65,91,138,139] and relaxin signaling modifies steroid-dependent regulation of gene expression within the endometrium, decidua and placenta [98,139,140]. However, direct evidence linking relaxin administration to changes in endometrial morphology/function and embryo implantation has long been a matter of speculation. Early histological studies with porcine relaxin demonstrated an apparent increase in endometrial angiogenesis in *M. mulatta* [141,142]. Functional studies in the common marmoset indicated that administration of highly purified recombinant human relaxin (rhRLX) during the peri-implantation period precipitated an increase in endometrial thickness (E. Unemori, personal communication). More recent observations in humans undergoing rhRLX treatment for systemic sclerosis unmasked a treatment associated increase in menstrual bleeding in a large proportion of the study subjects [119,143,144]. A very elegant series of experiments recently performed in *M. mulatta* has demonstrated the direct effects of relaxin on uterine weight, lymphocyte and arteriole numbers and

steroid hormone receptor expression [145]. Thus rhRLX clearly affects the primate endometrium in a manner consistent with a role as a physiological modulator of embryo implantation and early pregnancy. However, the direct effect of relaxin administration on implantation and pregnancy in primate species remains less well studied.

We have recently examined the effects of rhRLX administration during the peri-implantation period using *in vitro* fertilization and embryo transfer (IVF/ET) in *M. fascicularis* [146]. Many of the difficulties associated with mating and natural conception in macaques that make the study of implantation and early pregnancy difficult can be circumvented by the use of IVF/ET. Previous studies have shown some success with IVF/ET procedures in *M. fascicularis*, with implantation rates of 8.3%–12.0% achieved using 1–4 embryos transferred per recipient during natural cycles [147–149].

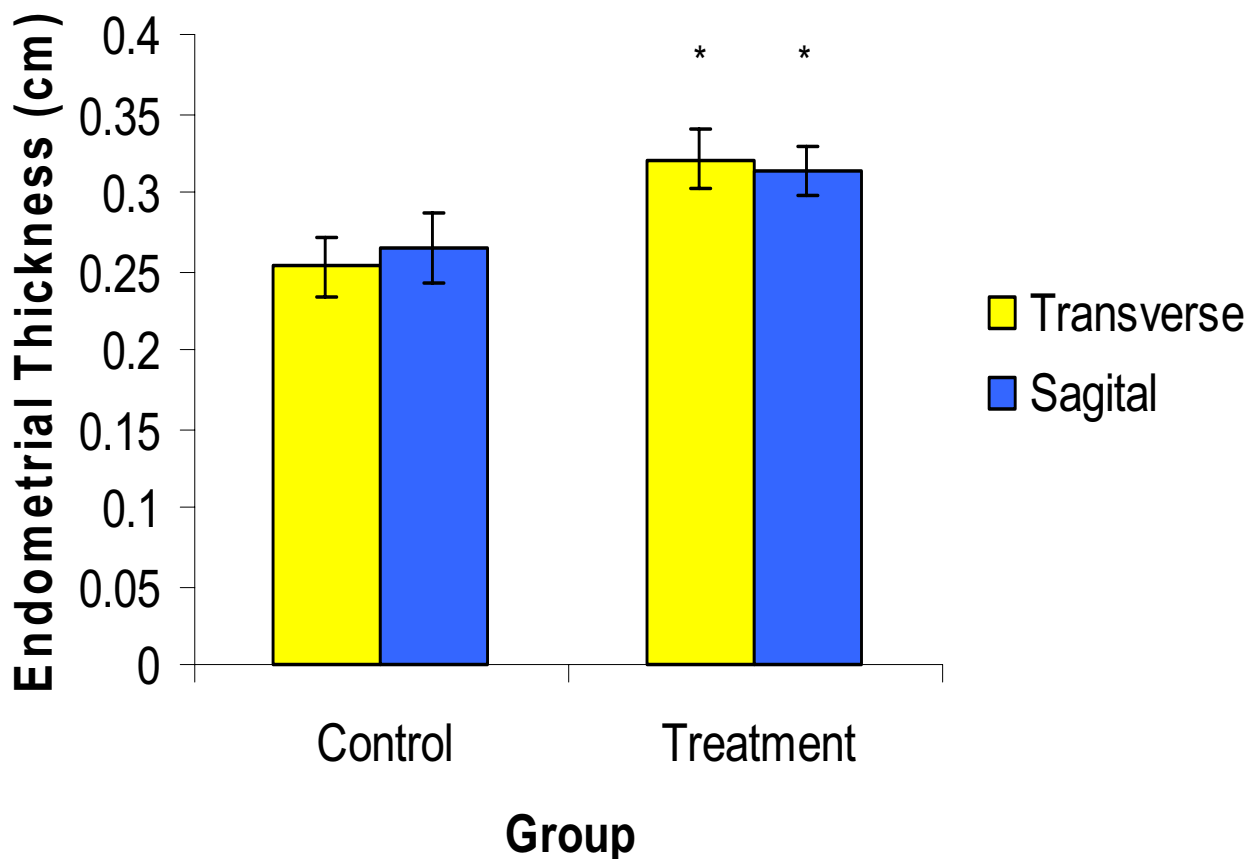
We investigated implantation and early pregnancy in *M. fascicularis* during IVF/ET using more recently developed techniques [150–152]. Relaxin or vehicle was infused into recipient monkeys ( $n = 11$  per treatment group) from seven days prior (Day 0) to embryo transfer (Day 7) to 14 days post embryo transfer (Day 21), encompassing the luteal phase and extending into early pregnancy (approximately day 8 to day 29 of the cycle). Recipient monkeys received 4 IVF derived and frozen-thawed embryos (2 per oviduct). The effect of rhRLX administration on implantation, pregnancy and endometrial thickness were assessed by ultrasound at various time points during drug infusion and up to 46 days after cessation of drug infusion (Day 28 and Day 67) and compared to vehicle treated animals [146].

Recipient menstrual cycles and the quality of thawed IVF derived embryos were not different between the two treatment groups. Recombinant human relaxin produced a transient (Day 7 only) but significant increase in endometrial thickness compared to vehicle (Figure 2). Relaxin also significantly reduced the number of days to the appearance of placental sign (implantation associated bleeding) and significantly increased the total number of bleeding days associated with implantation compared to vehicle (Figure 3). There was a persistent increase in implantation rate in the relaxin group compared to the control group, but this difference did not achieve statistical significance (Figure 4). However, sustained multiple pregnancies (twins or triplets) were observed in 60% of pregnant relaxin-treated females compared to 0% in controls (Figure 5). The difference in multiple pregnancy rates was borderline significant ( $p = 0.06$ ) and was somewhat unexpected given that macaque species exhibit very low rates (0.07%) of multiple gestations in natural and captive breeding environments [153] and during IVF/ET proce-

dures [147–149] and suggests a possible relaxin-mediated influence. Placental circumference and surface area tended to be larger in relaxin treated pregnancies (Figure 6) but again the effect failed to achieve statistical significance. Fetal growth parameters tended to be smaller in relaxin treated pregnancies, possibly as a result of increased numbers of viable fetuses in this group (Figure 7).

We observed a positive relaxin-mediated effect on endometrial thickness in *M. fascicularis*. Endometrial thickness increases progressively during a normal human menstrual cycle and remains at and early/mid-luteal phase maximum until one to two days prior to menses [154]. This increase is believed to reflect alterations occurring in the tissue, including an increase in endometrial blood flow [154,155] and glandular secretory and stromal predecidual changes [156] that occur under the influence of the steroid hormone milieu. Thus, thickness measurements may be useful as a general descriptive feature of a normally developing endometrium, and, in fact, have been used to identify abnormally thin endometria, which, for whatever reason, have a high implantation failure rate following IVF [157–159]. The relaxin-related increase in thickness may be due to a cellular influence, such as stimulation of predecidualization [88], or may be the result of increased vascularization, both purported to be effects of relaxin [119,141]. Our results are in agreement with recent results demonstrating increased uterine weight in rhesus monkeys exposed to exogenous relaxin administration [145].

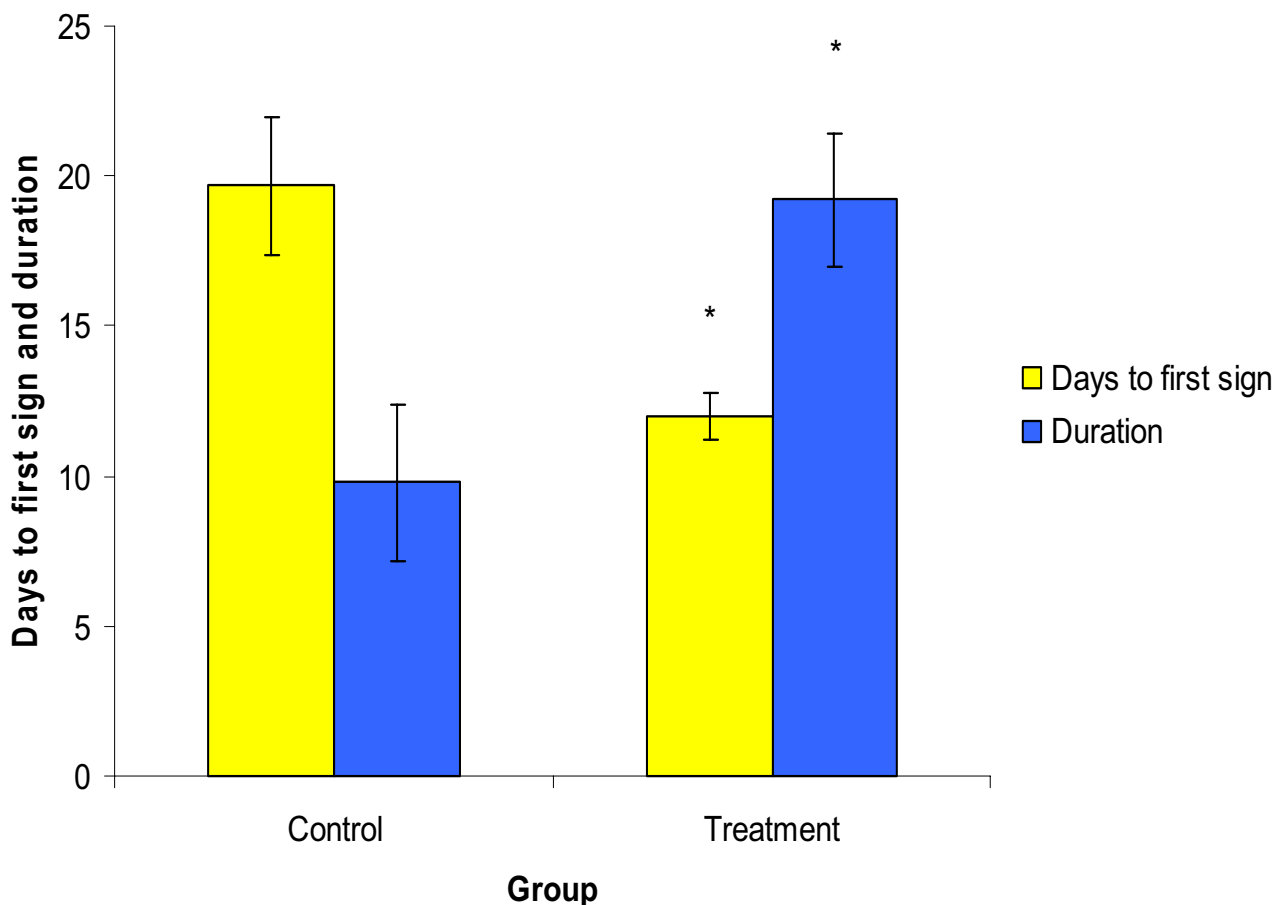
Relaxin administration in *M. fascicularis* was also associated with an increased placental sign, or implantation related bleeding. Placental sign is a natural phenomenon that appears several days following mating in pregnant females in some non-human primate species [160]. The bleeding is believed to be associated with the physiology of embryonic implantation in monkeys [46] and is, contrary to the situation in humans, a positive sign of pregnancy. Relaxin treatment was associated with a significantly shorter time period to first appearance of the placental sign and a significant increase in duration of implantation bleeding, compared to treatment with vehicle alone. A reasonable hypothesis for these increases would be that relaxin has a positive influence on endometrial perfusion, which is known to increase in the luteal phase of the menstrual cycle when relaxin is naturally present [161]. Previous findings, including those cited above, have supported the hypothesis that relaxin affects the uterine vasculature in primates [119,141,142,144,162]. *In vitro*, relaxin caused a dose-dependent increase in the secretion of the cytokine, VEGF, in normal human endometrial stromal cells [99,119]. VEGF stimulates endothelial proliferation and vasodila-



**Figure 2**  
**Effects of recombinant human relaxin on endometrial thickness at embryo transfer (Day 7) in *M. fascicularis***  
 Illustrates the effects of recombinant human relaxin on endometrial thickness measurements in *M. fascicularis* at embryo transfer, 7 days into a 21-day treatment regimen. Data are expressed as mean ± SEM (n = 11) for recipient monkeys receiving vehicle (control) and relaxin (treatment). Endometrial thickness measurements were taken in transverse (yellow) and sagittal (blue) planes and are expressed in centimeters (cm). An asterisk (\*) indicates a significant treatment related difference compared to control (P < 0.05).

tion, as well as vascular permeability [163]. VEGF and its receptors, which are expressed cyclically in the endometrium [117,164], may be at least partly responsible for increased blood vessel growth, vasodilation, and vascular permeability that occur in the luteal phase of the menstrual cycle [165-167]. How relaxin interacts with estrogen and progesterone, whose induction of VEGF in the primate endometrium has not been clearly defined [165], and whether other mediators of angiogenesis are involved remain to be elucidated.

Based on the current available body of work with relaxin in non-human primate models of pregnancy several indications for exogenous relaxin use in human assisted reproductive technology (ART) applications become apparent and include amelioration of deficits in endometrial development and vascularization associated with implantation failure, improvement of suboptimal decidual/placental cAMP accumulation associated with abnormal pregnancy and administration combined with single

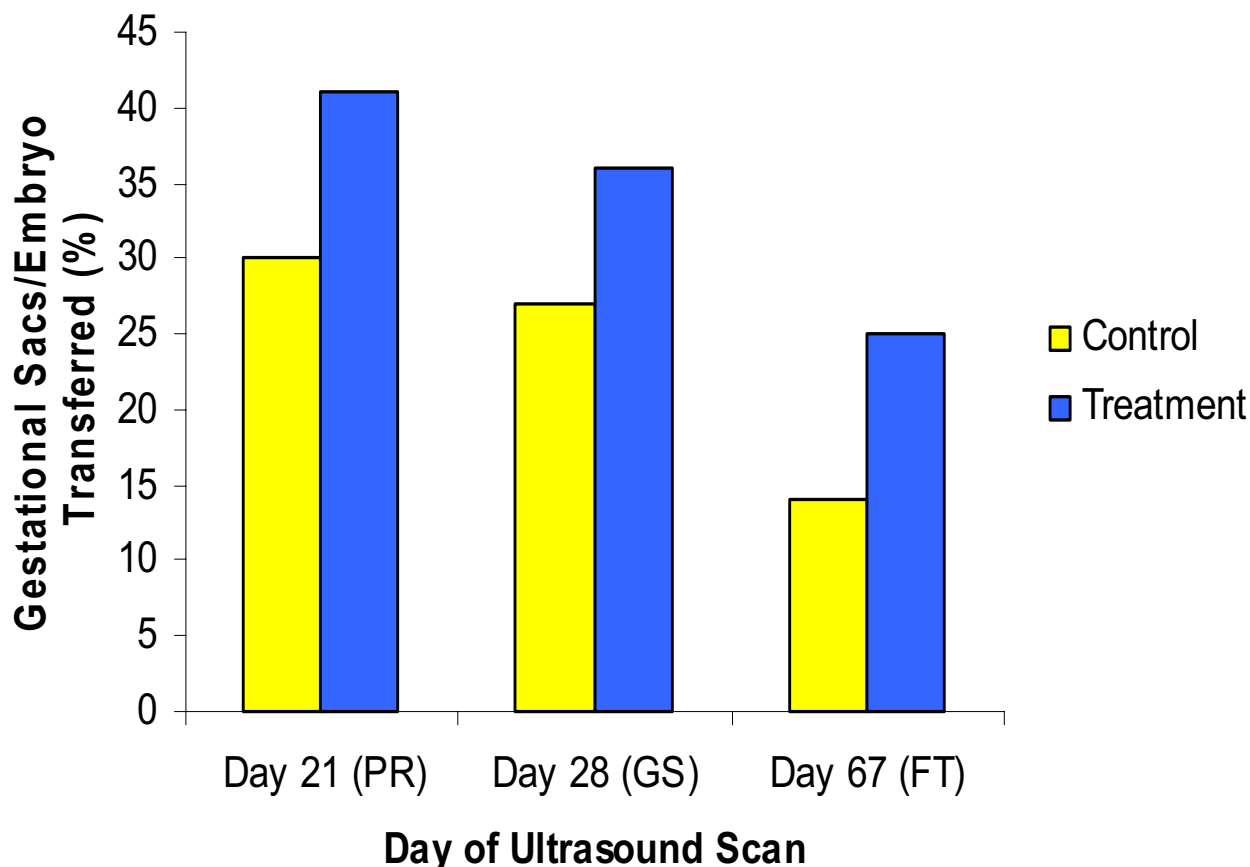


**Figure 3**  
**Effects of recombinant human relaxin on implantation bleeding in *M. fascicularis*.** Demonstrates the effects of recombinant human relaxin on implantation bleeding in *M. fascicularis*. Data are expressed as mean  $\pm$  SEM (n = 5–6) for pregnant recipient monkeys receiving vehicle (control) and relaxin (treatment). Days to the onset of first appearance of implantation bleeding (yellow) were calculated as the number of days from embryo transfer to the first external signs of bleeding. The duration of implantation bleeding was calculated as the number of days from the onset of bleeding to the complete cessation of bleeding (blue). An asterisk (\*) indicates a significant treatment related difference compared to control (P < 0.05)

embryo transfer to help promote positive pregnancy outcome while at the same time reducing the risk of multiple gestations.

A number of studies have implicated thin endometria as a negative predictor of pregnancy outcome in an IVF/ET setting and experimental evidence in laboratory animals clearly implicates inhibition of angiogenesis with implantation failure [159,168,169]. Clinical studies have demonstrated a close negative relationship between poor vascularization of extraembryonic tissues during early pregnancy and viable term delivery [170,171]. Indeed

reduced trophoblastic VEGF expression and decidual VEGF-receptor expression are significantly and negatively correlated with recurrent miscarriage [172]. Supplementation of human IVF/ET cycles with progesterone leads to an increase in endometrial thickness [173] and progesterone induces up-regulation of angiogenic factors during the secretory phase of the cycle in a manner that is prevented by the PR-antagonist RU486 [113]. However, it is not known if the effects of progesterone on primate endometrial thickness and vascularization involve, or are dependent upon, the presence of relaxin. The fact that relaxin and progesterone synergize to affect full expression of markers



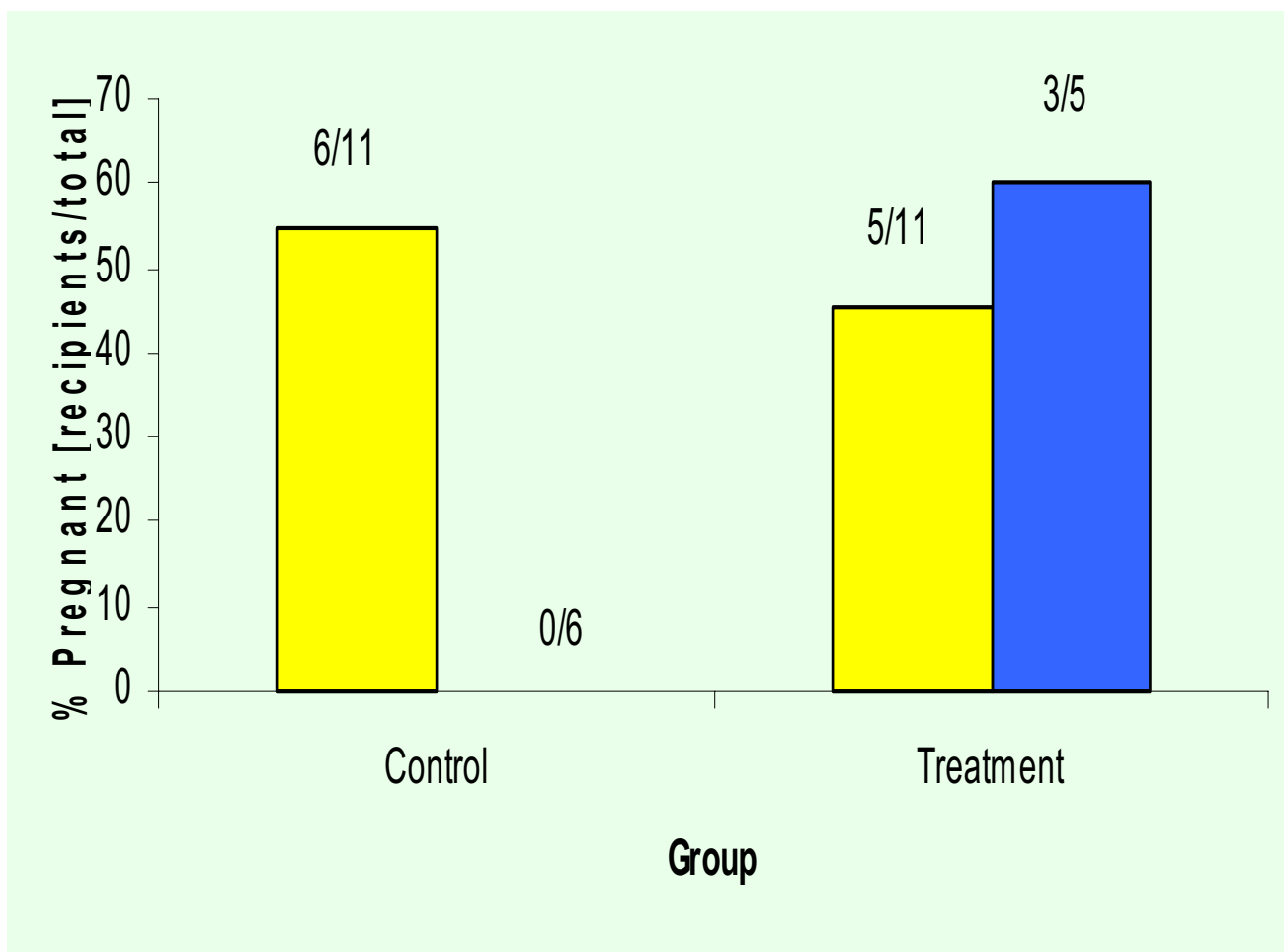
**Figure 4**

**Effects of recombinant human relaxin on implantation in *M. fascicularis*.** Shows the effects of recombinant human relaxin on implantation in *M. fascicularis* at various ultrasound observation time points. Data is expressed as implantation calculated as a percentage of the number of gestational sacs or fetus per embryo transferred ( $n = 11$ ) in recipient monkeys receiving vehicle (control, yellow) or relaxin (treatment, blue). PR, pump removal; GS, ultrasound scan for gestational sacs; ultrasound scan for fetuses.

of endometrial receptivity [103] suggests that relaxin may be required to establish optimal implantation conditions. Recent studies in macaques have clearly demonstrated that on a background of steroid hormone priming relaxin produces a direct and significant increase in uterine weight and blood vessel neogenesis [145]. Therefore, administration of exogenous relaxin to subsets of infertile patients presenting with thin and/or undervascularized endometria could potentially improve term IVF/ET pregnancy rates.

Mice subjected to lipopolysaccharide (LPS) administration during pregnancy exhibit markedly reduced

endometrial cAMP levels and spontaneous abortion marked by fetal expulsion [174]. The LPS mediated effect is enhanced by reduction of  $\beta$ -adrenoceptor-mediated cAMP production and reduced by exogenous administration of dbcAMP or theophylline, a known inducer of cellular cAMP production [174,175]. These experimental results indicate that maintenance of endometrial cAMP may be a requirement for maintenance of pregnancy. Patients that suffer from recurrent miscarriage exhibit reduced plasma and endometrial concentrations of cAMP [176-178]. Patients with this pregnancy phenotype also exhibit reduced plasma steroid hormone levels and reduced serum levels of hCG [179]. Some groups have

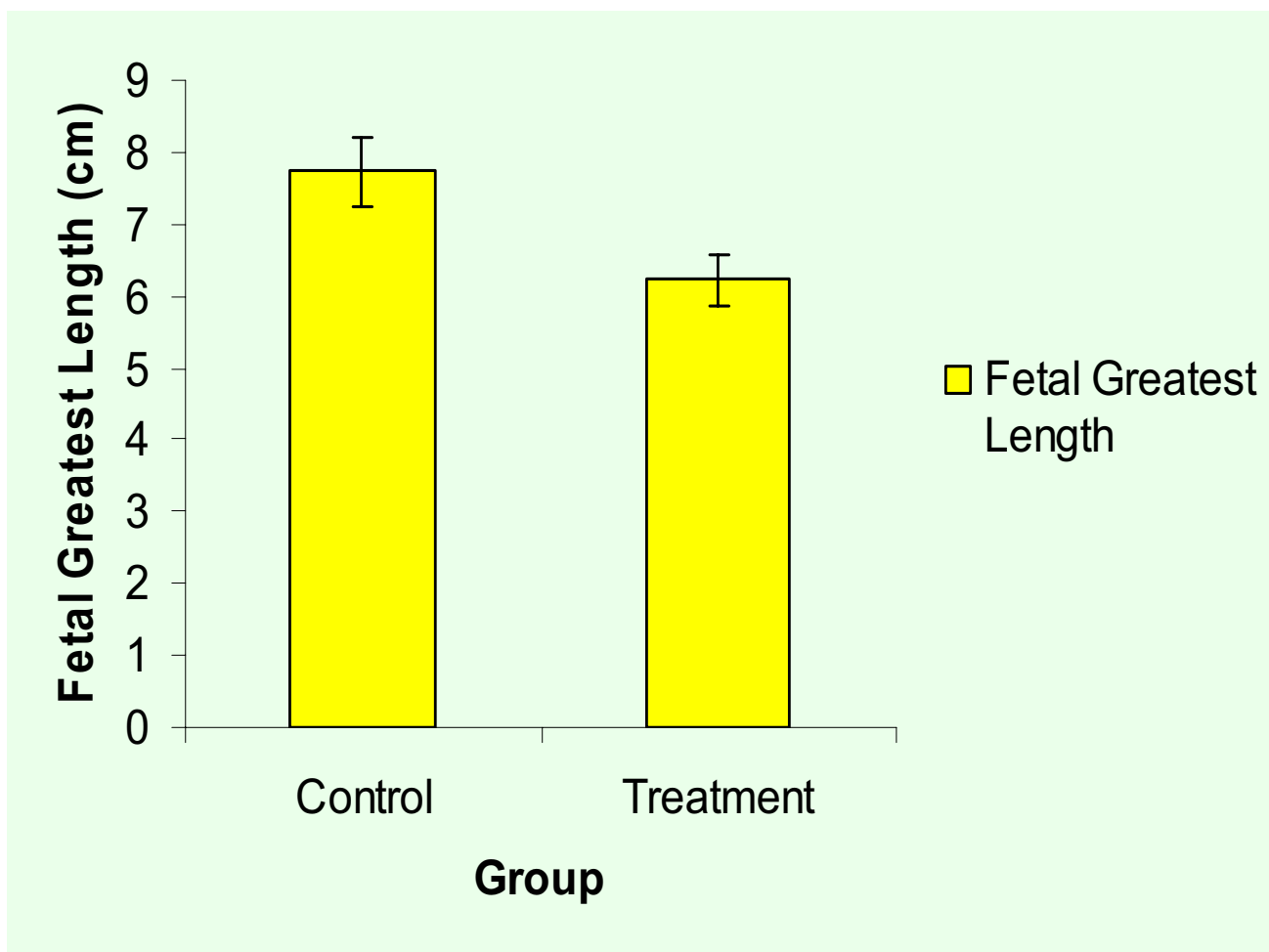


**Figure 5**  
**Effects of recombinant human relaxin on pregnancy (Day 67) in *M. fascicularis*.** Highlights the effects of recombinant human relaxin on multiple pregnancy rates in recipient monkeys receiving vehicle (control) or relaxin (treatment). The data are expressed as percentages of pregnancies (number/total number of recipients, yellow) and multiple pregnancies (number/number of pregnancies, blue). Numbers above the columns indicate proportions of pregnant animals.

suggested the application of hCG or gonadotrophin preparations containing LH for the prevention of recurring or spontaneous pregnancy loss [180]. Although a direct link between hCG, endometrial relaxin secretion and endometrial cAMP production has not been established in primates hCG does prolong the P<sub>4</sub> and relaxin producing life span of the corpus luteum [58], and directly activates cAMP production in cells transfected with the hCG/LH receptor, a receptor that is abundantly expressed in human and non-human primate endometrium during the implantation period [79,82,181]. Taken together these results support the use of hCG for treatment of recurrent miscarriage. Whether or not any potential benefits of exogenous LH or hCG treatment against recurrent preg-

nancy loss are mediated directly by P<sub>4</sub>, relaxin, cAMP or a combination of these factors is not yet known. Given that relaxin synergizes with P<sub>4</sub> and phosphodiesterase inhibitors to potently stimulate and maintain cAMP production in hormonally primed endometrial stromal cells [103] new therapeutic approaches that employ exogenous P<sub>4</sub>, relaxin and selective phosphodiesterase inhibitors alone or in combination could reduce spontaneous or habitual pregnancy loss associated with inadequate endometrial cAMP signaling.

Recently a number of clinical IVF/ET variables including, but not limited to, patient selection criteria, aggressive superovulation protocols, improvements in embryo



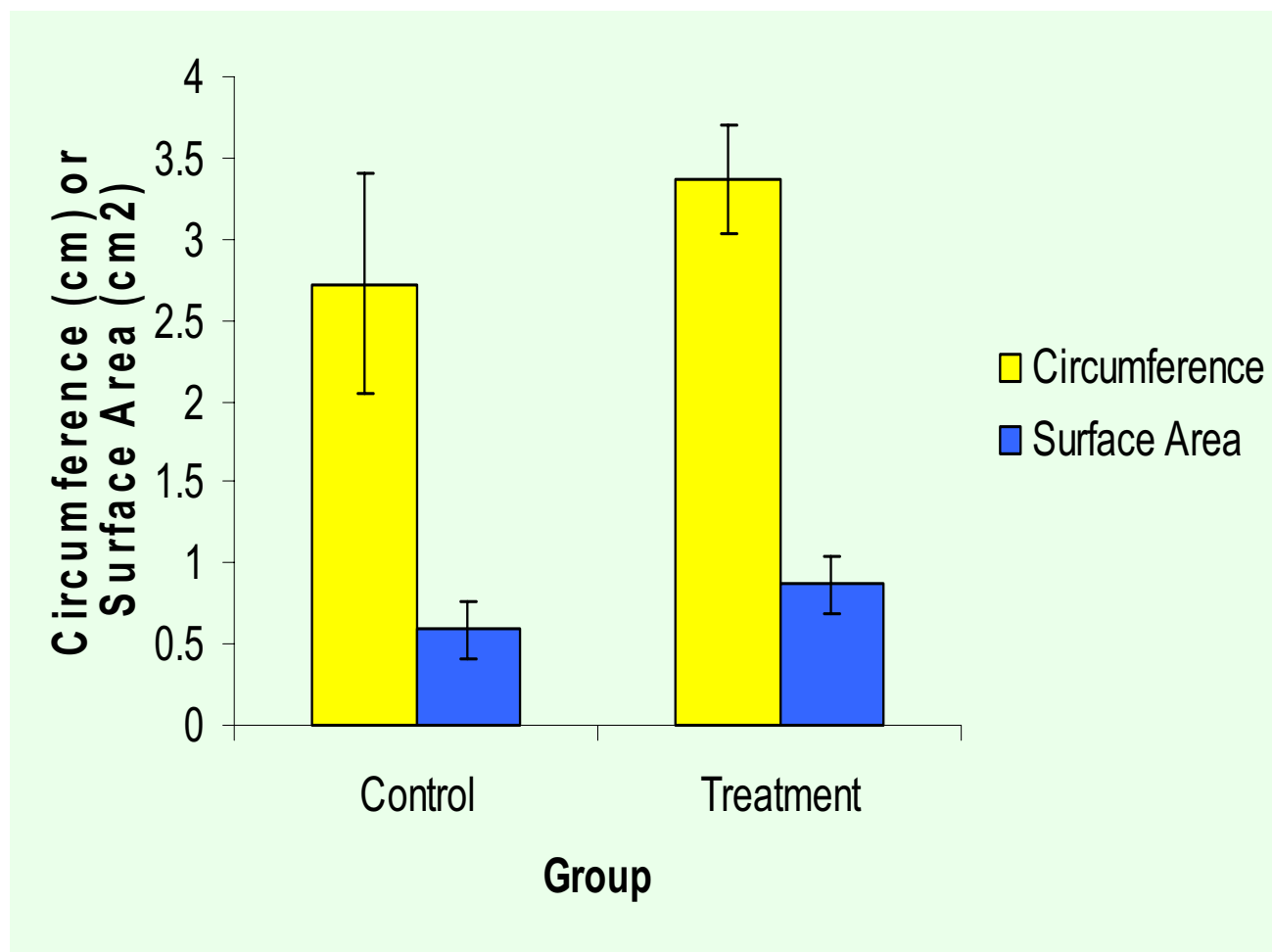
**Figure 6**  
**Effects of recombinant human relaxin on fetal size (Day 67) in *M. fascicularis*.** Demonstrates the effects of recombinant human relaxin on greatest fetal length in pregnant in *M. fascicularis*. Data are expressed as mean  $\pm$  SEM ( $n = 4-6$ ) for pregnant recipient monkeys receiving vehicle (control) and relaxin (treatment). Fetal length measurements represent crown-rump distances and are expressed in centimeters (cm).

culture conditions, improved morphological assessment of developing embryos and hormone supplementation of transfer cycles have led to increases in both singleton pregnancy rates and multiple pregnancy rates resulting from ART procedures [182,183]. Where steroid hormone profiles can be closely monitored the judicious administration of exogenous relaxin combined with transfer of a limited number ( $n = 1?$ ) of good quality embryos could potentially enhance pregnancy rates and, at the same time, limit the number of multiple pregnancies. Given that high levels of circulating relaxin are not needed for initiation and maintenance of pregnancy in primates it may be possible to achieve the desired outcome of singleton pregnancy with relaxin administration at the time of

embryo transfer only. Because relaxin can produce disparate effects on reproductive physiology depending upon the underlying steroid hormone milieu [55,89,99] and because relaxin may be responsible for aggravation of tumor growth and invasiveness under certain conditions [184,185], any potential applications of exogenous relaxin in human ART procedures may require further mechanistic, efficacy and safety studies in clinically relevant non-human primate species.

### Conclusions

As is often the case in reproductive biology the stage is set and directed by the steroid hormones and gonadotrophins with bit parts played by paracrine/auto-



**Figure 7**

**Effects of recombinant human relaxin on placental size in *M. fascicularis* (Day 67).** Illustrates the effects of recombinant human relaxin on placental size in pregnant *M. fascicularis*. Data are expressed as mean  $\pm$  SEM (n = 3–4) for pregnant recipient monkeys receiving vehicle (control) and relaxin (treatment). Placental sizes were measured as circumference (yellow) and surface area (blue) and are expressed in centimeters (cm) and square centimeters (cm<sup>2</sup>), respectively.

crine actors that may or may not be redundant. Primate relaxin is clearly paracrine modulator of reproductive physiology related to pregnancy whose redundancy has not yet been established. Primate ovarian relaxin is not required for initiation or maintenance of pregnancy provided adequate levels of steroid hormones are developed and maintained. However, primate relaxin is also produced by both fetal and maternal sources within the pregnant endometrium and directly or indirectly activates a number of cellular signaling systems that are crucial to initiation and maintenance of pregnancy and proper term delivery. Administration of human relaxin to cycling female monkeys during the peri-implantation period resulted in a transient increase in endometrial thickness

and increased implantation-related bleeding and are consistent with other studies in non-human primates demonstrating a positive role for relaxin in modulating endometrial physiology during the implantation period. Whether or not primate relaxin is necessary for successful pregnancy remains to be determined. Key relaxin ablation experiments and/or application of selective relaxin receptor agonists and antagonists in model systems will be required to expand our understanding of the nature of relaxin in primate pregnancy. Pharmacological manipulation of the endometrium with exogenous relaxin could be of value in human ART procedures where inadequate endometrial development and vascularization have a negative impact on pregnancy rates, where dysregulation of



cAMP production and metabolism are associated with pregnancy disorders and where a reduction in multiple pregnancy rates associated with ART procedures is warranted. The recent discovery of functional relaxin receptors offers the promise of further identification of specific relaxin targets within reproductive tissues, as well as the design and development of potent and selective synthetic relaxin agonists and antagonists with which to perform functional studies. The use of these tools in non-human primate models should accelerate the elucidation of relaxin's specific role(s) in pregnancy and any potential applications for relaxin in human ART.

### List of abbreviations

ART, assisted reproductive technology; C/EBP $\beta$ , CCAAT/enhancer binding protein beta; cAMP, cyclic adenosine monophosphate; CG, chorionic gonadotrophin; E<sub>2</sub>, 17- $\beta$  estradiol; hCG, human CG; FoxO1a, forkhead/winged helix protein 1a; IFN- $\gamma$ , interferon gamma; IGF, insulin-like growth factor; IGFBP, insulin-like factor binding protein; IVF/ET, *in vitro* fertilization/embryo transfer; LGR, leucine-repeat rich G-protein coupled receptor; LH, luteinizing hormone; MAPK, mitogen activated protein kinase; mRNA, messenger ribonucleic acid; NF $\kappa$  $\beta$ , nuclear transcription factor kappa beta; P<sub>4</sub>, progesterone; rhRLX, recombinant human relaxin; SEM, standard error of the mean; Stat5, signal transducer and activator of transcription 5; Th, T-helper; TNF- $\beta$ , tumor necrosis factor beta.

### Author contributions

The studies with recombinant human relaxin conducted in *M. fascicularis* were funded by Connetics Corp, Palo Alto, CA, USA. The studies were designed by EU and executed by EH. The data presented here has previously been disseminated in abstract (International Embryo Transfer Society Annual Meeting, Auckland, New Zealand, January 2003) and oral (International Embryo Transfer Society Annual Meeting, Post Conference Symposium, Portland, OR USA, January 2004) forms. The full details of our work with *M. fascicularis* have been submitted for publication elsewhere.

### Acknowledgements

Eliza Curnow was responsible for all of the IVF/ET procedures in *M. fascicularis* and is thanked for her expertise in the field of non-human primate ART. Alan Trounson also contributed to the study of relaxin administration during IVF/ET in *M. fascicularis* and his input is greatly appreciated.

### References

- Evans BA, John M, Fowler KJ, Summers RJ, Cronk M, Shine J, Tregear GW: **The mouse relaxin gene: nucleotide sequence and expression.** *J Mol Endocrinol* 1993, **10**:15-23.
- Soloff MS, Gal S, Hoare S, Peters CA, Hunzicker-Dunn M, Anderson GD, Wood TG: **Cloning, characterization, and expression of the rat relaxin gene.** *Gene* 2003, **323**:149-155.
- Stewart DR, Henzel WJ, Vandlen R: **Purification and sequence determination of canine relaxin.** *J Protein Chem* 1992, **11**:247-53.
- Haley J, Crawford R, Hudson P, Scanlon D, Tregear G, Shine J, Niall H: **Porcine relaxin. Gene structure and expression.** *J Biol Chem* 1987, **262**:11940-11946.
- Bathgate RA, Siebel AL, Tovote P, Claasz A, Macris M, Tregear GW, Parry LJ: **Purification and characterization of relaxin from the tammar wallaby (*Macropus eugenii*): bioactivity and expression in the corpus luteum.** *Biol Reprod* 2002, **67**:293-300.
- Stewart DR, Nevins B, Hadas E, Vandlen R: **Affinity purification and sequence determination of equine relaxin.** *Endocrinology* 1991, **129**:375-383.
- Hombach-Klonisch S, Abd-Elnaeim M, Skidmore JA, Leiser R, Fischer B, Klonisch T: **Ruminant relaxin in the pregnant one-humped camel (*Camelus dromedarius*).** *Biol Reprod* 2000, **62**:839-846.
- Klonisch T, Froehlich C, Tetens F, Fischer B, Hombach-Klonisch S: **Molecular remodeling of members of the relaxin family during primate evolution.** *Mol Biol Evol* 2001, **18**:393-403.
- Bryant-Greenwood GD, Schwabe C: **Human relaxins: chemistry and biology.** *Endocr Rev* 1994, **15**:5-26.
- Schwabe C, Bullesbach EE: **Relaxin: structures, functions, promises, and nonevolution.** *FASEB J* 1994, **8**:1152-1160.
- Hsu SY: **New insights into the evolution of the relaxin-LGR signaling system.** *Trends Endocrinol Metab* 2003, **14**:303-309.
- Evans BA, Fu P, Tregear GW: **Characterization of two relaxin genes in the chimpanzee.** *J Endocrinol* 1994, **140**:385-392.
- Bathgate RA, Samuel CS, Burazin TC, Layfield S, Claasz AA, Reytomas IG, Dawson NF, Zhao C, Bond C, Summers RJ, Parry LJ, Wade JD, Tregear GW: **Human relaxin gene 3 (H3) and the equivalent mouse relaxin (M3) gene. Novel members of the relaxin peptide family.** *J Biol Chem* 2002, **277**:1148-1157.
- Crawford RJ, Hudson P, Shine J, Niall HD, Eddy RL, Shows TB: **Two human relaxin genes are on chromosome 9.** *EMBO J* 1984, **3**:2341-2345.
- D'Elia AV, Pellizzari L, Puppini C, Driuli L, Marchesoni D, Damante G: **Dinucleotide polymorphisms present in the 5'-flanking region of the human H2 relaxin gene, but not in the corresponding region of the H1 gene.** *Horm Metab Res* 2003, **35**:24-28.
- Ivell R, Einspanier A: **Relaxin peptides are new global players.** *Trends Endocrinol Metab* 2002, **13**:343-348.
- Marriott D, Gillece-Castro B, Gorman CM: **Prohormone convertase-1 will process prorelaxin, a member of the insulin family of hormones.** *Mol Endocrinol* 1992, **6**:1441-1450.
- MacLennan AH, Grant P, Borthwick AC: **Relaxin and relaxin c-peptide levels in human reproductive tissues.** *Reprod Fertil Dev* 1991, **3**:577-583.
- Blankenship T, Stewart DR, Benirschke K, King B, Lasley BL: **Immunocytochemical localization of nonluteal ovarian relaxin.** *J Reprod Med* 1994, **39**:235-240.
- Krampert M, Bernhagen J, Schmucker J, Horn A, Schmauder A, Brunner H, Voelter W, Kapurniotu A: **Amyloidogenicity of recombinant human pro-islet amyloid polypeptide (ProlAPP).** *Chem Biol* 2000, **7**:855-871.
- Zarreh-Hoshiyari-Khah R, Bartsch O, Einspanier A, Pohnke Y, Ivell R: **Bioactivity of recombinant prorelaxin from the marmoset monkey.** *Regul Pept* 2001, **97**:139-146.
- Silvertown JD, Geddes BJ, Summerlee AJ: **Adenovirus-mediated expression of human prorelaxin promotes the invasive potential of canine mammary cancer cells.** *Endocrinology* 2003, **144**:3683-3691.
- Gunnerson JM, Fu P, Roche PJ, Tregear GW: **Expression of human relaxin genes: characterization of a novel alternatively-spliced human relaxin mRNA species.** *Mol Cell Endocrinol* 1996, **118**:85-94.
- Garibay-Tupas JL, Csiszar K, Fox M, Povey S, Bryant-Greenwood GD: **Analysis of the 5'-upstream regions of the human relaxin H1 and H2 genes and their chromosomal localization on chromosome 9p24.1 by radiation hybrid and breakpoint mapping.** *J Mol Endocrinol* 1999, **23**:355-365.
- Srivastava S, Weitzmann MN, Kimble RB, Rizzo M, Zahner M, Milbrandt J, Ross FP, Pacifici R: **Estrogen blocks M-CSF gene expression and osteoclast formation by regulating phosphorylation of Egr-1 and its interaction with Sp-1.** *J Clin Invest* 1998, **102**:1850-1859.
- Krikun G, Lockwood CJ: **Steroid hormones, endometrial gene regulation and the Sp1 family of proteins.** *J Soc Gynecol Investig* 2002, **9**:329-334.

27. Coss D, Jacobs SB, Bender CE, Mellon PL: **A novel AP-1 site is critical for maximal induction of the follicle-stimulating hormone beta gene by gonadotropin-releasing hormone.** *J Biol Chem* 2004, **279**:152-162.
28. Osheroff PL, King KL: **Binding and cross-linking of 32P-labeled human relaxin to human uterine cells and primary rat atrial cardiomyocytes.** *Endocrinology* 1995, **136**:4377-4381.
29. Garibay-Tupas JL, Maaskant RA, Greenwood FC, Bryant-Greenwood GD: **Characteristics of the binding of 32P-labelled human relaxins to the human fetal membranes.** *J Endocrinol* 1995, **145**:441-448.
30. Koay ES, Bryant-Greenwood GD, Yamamoto SY, Greenwood FC: **The human fetal membranes: a target tissue for relaxin.** *J Clin Endocrinol Metab* 1986, **62**:513-521.
31. Kohsaka T, Min G, Lukas G, Trupin S, Campbell ET, Sherwood OD: **Identification of specific relaxin-binding cells in the human female.** *Biol Reprod* 1998, **59**:991-999.
32. Einspanier A, Muller D, Lubberstedt J, Bartsch O, Jurdzinski A, Fuhrmann K, Ivell R: **Characterization of relaxin binding in the uterus of the marmoset monkey.** *Mol Hum Reprod* 2001, **7**:963-970.
33. Hsu SY, Nakabayashi K, Nishi S, Kumagai J, Kudo M, Sherwood OD, Hsueh AJ: **Activation of orphan receptors by the hormone relaxin.** *Science* 2002, **295**:671-674.
34. Sudo S, Kumagai J, Nishi S, Layfield S, Ferraro T, Bathgate RA, Hsueh AJ: **H3 relaxin is a specific ligand for LGR7 and activates the receptor by interacting with both the ectodomain and the exoloop 2.** *J Biol Chem* 2003, **278**:7855-7862.
35. Hsu SY, Nakabayashi K, Nishi S, Kumagai J, Kudo M, Bathgate RA, Sherwood OD, Hsueh AJ: **Relaxin signaling in reproductive tissues.** *Mol Cell Endocrinol* 2003, **202**:165-170.
36. Luna JJ, Riesewijk A, Horcajadas JA, Van Os Rd R, Dominguez F, Mosselman S, Pellicer A, Simon C: **Gene expression pattern and immunoreactive protein localization of LGR7 receptor in human endometrium throughout the menstrual cycle.** *Mol Hum Reprod* 2004, **10**:85-90.
37. Ivell R, Balvers M, Pohnke Y, Telgmann R, Bartsch O, Milde-Langosch K, Bamberger AM, Einspanier A: **Immunoexpression of the relaxin receptor LGR7 in breast and uterine tissues of humans and primates.** *Reprod Biol Endocrinol* 2003, **1**:114.
38. Bani D, Baccari MC, Nistri S, Calamai F, Bigazzi M, Sacchi TB: **Relaxin up-regulates the nitric oxide biosynthetic pathway in the mouse uterus: involvement in the inhibition of myometrial contractility.** *Endocrinology* 1999, **140**:4434-4441.
39. Peters CA, Maizels ET, Robertson MC, Shiu RP, Soloff MS, Hunzicker-Dunn M: **Induction of relaxin messenger RNA expression in response to prolactin receptor activation requires protein kinase C delta signaling.** *Mol Endocrinol* 2000, **14**:576-590.
40. Meera P, Anwer K, Monga M, Oberti C, Stefani E, Toro L, Sanborn BM: **Relaxin stimulates myometrial calcium-activated potassium channel activity via protein kinase A.** *Am J Physiol* 1995, **269**:C312-317.
41. Einspanier A, Zarreh-Hoshiyari-Khah MR, Balvers M, Kerr L, Fuhrmann K, Ivell R: **Local relaxin biosynthesis in the ovary and uterus through the oestrous cycle and early pregnancy in the female marmoset monkey (*Callithrix jacchus*).** *Hum Reprod* 1997, **12**:1325-1337.
42. Stewart DR, Celniker AC, Taylor CA Jr, Cragun JR, Overstreet JW, Lasley BL: **Relaxin in the peri-implantation period.** *J Clin Endocrinol Metab* 1990, **70**:1771-1773.
43. Stewart DR, Stouffer R, Overstreet JW, Hendrickx A, Lasley BL: **Measurement of periimplantational relaxin concentrations in the macaque using a homologous assay.** *Endocrinology* 1993, **132**:6-12.
44. Sherwood OD: **Relaxin.** In *The Physiology of Reproduction* Edited by: Knobil E, Niell JD. New York: Raven Press, Ltd; 1994:862-1009.
45. Enders AC, Lopata A: **Implantation in the marmoset monkey: expansion of the early implantation site.** *Anat Rec* 1999, **256**:279-299.
46. Carson DD, Bagchi I, Dey SK, Enders AC, Fazleabas AT, Lessey BA, Yoshinaga K: **Embryo implantation.** *Dev Biol* 2000, **223**:217-237.
47. Lucas C, Bald LN, Martin MC, Jaffe RB, Drolet DW, Mora-Worms M, Bennett G, Chen AB, Johnston PD: **An enzyme-linked immunosorbent assay to study human relaxin in human pregnancy and in pregnant rhesus monkeys.** *J Endocrinol* 1989, **120**:449-457.
48. Castracane VD, Lessing J, Brenner S, Weiss G: **Relaxin in the pregnant baboon: evidence for local production in reproductive tissues.** *J Clin Endocrinol Metab* 1985, **60**:133-136.
49. Emmi AM, Skurnick J, Goldsmith LT, Gagliardi CL, Schmidt CL, Kleinberg D, Weiss G: **Ovarian control of pituitary hormone secretion in early human pregnancy.** *J Clin Endocrinol Metab* 1991, **72**:1359-1363.
50. Ghosh D, De P, Sengupta J: **Luteal phase ovarian oestrogen is not essential for implantation and maintenance of pregnancy from surrogate embryo transfer in the rhesus monkey.** *Hum Reprod* 1994, **9**:629-637.
51. Steinetz BG, Randolph C, Mahoney CJ: **Patterns of relaxin and steroids in the reproductive cycle of the common marmoset (*Callithrix jacchus*): effects of prostaglandin F2 alpha on relaxin and progesterone secretion during pregnancy.** *Biol Reprod* 1995, **53**:834-839.
52. Steinetz BG, Goldsmith LT, Hasan SH, Lust G: **Diurnal variation of serum progesterone, but not relaxin, prolactin, or estradiol-17 beta in the pregnant bitch.** *Endocrinology* 1990, **127**:1057-1063.
53. Concannon P, Tsutsui T, Shille V: **Embryo development, hormonal requirements and maternal responses during canine pregnancy.** *J Reprod Fertil Suppl* 2001, **57**:169-179.
54. Stouffer RL, Ottobre JS, Molskness TA, Zelinski-Wooten MB: **The function and regulation of the primate corpus luteum during the fertile menstrual cycle.** *Prog Clin Biol Res* 1989, **294**:129-142.
55. Summerlee AJS, Mumford AD, Smith MS: **Porcine relaxin affects the release of luteinizing hormone in rats.** *J Neuroendocrinol* 1991, **3**:133-138.
56. Stouffer RL: **Progesterone as a mediator of gonadotrophin action in the corpus luteum: beyond steroidogenesis.** *Hum Reprod Update* 2003, **9**:99-117.
57. Ottobre JS, Nixon WE, Stouffer RL: **Induction of relaxin secretion in rhesus monkeys by human chorionic gonadotropin: dependence on the age of the corpus luteum of the menstrual cycle.** *Biol Reprod* 1984, **31**:1000-1006.
58. Duffy DM, Hutchison JS, Stewart DR, Stouffer RL: **Stimulation of primate luteal function by recombinant human chorionic gonadotropin and modulation of steroid, but not relaxin, production by an inhibitor of 3 beta-hydroxysteroid dehydrogenase during simulated early pregnancy.** *J Clin Endocrinol Metab* 1996, **81**:2307-2313.
59. Duffy DM, Stewart DR, Stouffer RL: **Titration of luteinizing hormone replacement to sustain the structure and function of the corpus luteum after gonadotropin-releasing hormone antagonist treatment in rhesus monkeys.** *J Clin Endocrinol Metab* 1999, **84**:342-349.
60. Duffy DM, Stouffer RL, Stewart DR: **Dissociation of relaxin and progesterone secretion from the primate corpus luteum by acute administration of a 3 beta-hydroxysteroid dehydrogenase inhibitor during the menstrual cycle.** *Biol Reprod* 1995, **53**:447-453.
61. Stewart DR, VandeVoort CA: **Relaxin secretion by human granulosa cell culture is predictive of in-vitro fertilization-embryo transfer success.** *Hum Reprod* 1999, **14**:338-344.
62. VandeVoort CA, Overstreet JW, Lasley BL, Stewart DR: **Effects of progesterone receptor blockers on human granulosa-luteal cell culture secretion of progesterone, estradiol, and relaxin.** *Biol Reprod* 2000, **62**:200-205.
63. Schams D, Berisha B: **Steroids as local regulators of ovarian activity in domestic animals.** *Domest Anim Endocrinol* 2002, **23**:53-65.
64. Musah AI, Schwabe C, Anderson LL: **Relaxin, oxytocin, and prostaglandin effects on progesterone secretion from bovine luteal cells during different stages of gestation.** *Proc Soc Exp Biol Med* 1990, **195**:255-260.
65. Yki-Jarvinen H, Wahlstrom T, Seppala M: **Immunohistochemical demonstration of relaxin in the genital tract of pregnant and nonpregnant women.** *J Clin Endocrinol Metab* 1983, **57**:451-454.
66. Ghosh D, Sengupta J: **Molecular mechanism of embryo-endometrial adhesion in primates: a future task for implantation biologists.** *Mol Hum Reprod* 1998, **4**:733-735.
67. Huang H, Rajkumar K, Murphy LJ: **Reduced fecundity in insulin-like growth factor-binding protein-1 transgenic mice.** *Biol Reprod* 1997, **56**:284-289.

68. Tseng L, Mazella J: **Endometrial cell specific gene activation during implantation and early pregnancy.** *Front Biosci* 2002, **7**:d1566-1574.
69. Soong YK, Wang HS, Cheng SY, Chien HJ: **Expression of insulin-like growth factor-binding protein-1 (IGFBP-1) mRNA in embryos and endometrial stromal cells.** *Mol Hum Reprod* 1998, **4**:153-157.
70. Prele K, Stojkovic M, Boxhammer K, Motlik J, Ewald D, Arnold GJ, Wolf E: **Insulin-like growth factor I (IGF-I) and long R(3)IGF-I differently affect development and messenger ribonucleic acid abundance for IGF-binding proteins and type I IGF receptors in in vitro produced bovine embryos.** *Endocrinology* 2001, **142**:1309-1316.
71. Liu HC, Mele C, Catz D, Noyes N, Rosenwaks Z: **Production of insulin-like growth factor binding proteins (IGFBPs) by human endometrial stromal cell is stimulated by the presence of embryos.** *J Assist Reprod Genet* 1995, **12**:78-87.
72. Tarantino S, Verhage HG, Fazleabas AT: **Regulation of insulin-like growth factor-binding proteins in the baboon (*Papio anubis*) uterus during early pregnancy.** *Endocrinology* 1992, **130**:2354-2362.
73. Fazleabas AT, Jaffe RC, Verhage HG, Waites G, Bell SC: **An insulin-like growth factor-binding protein in the baboon (*Papio anubis*) endometrium: synthesis, immunocytochemical localization, and hormonal regulation.** *Endocrinology* 1989, **124**:2321-2329.
74. Herrler A, von Wolff M, Beier HM: **Proteins in the extraembryonic matrix of preimplantation rabbit embryos.** *Anat Embryol (Berl)* 2002, **206**:49-55.
75. Hearn JP, Gidley-Baird AA, Hodges JK, Summers PM, Webley GE: **Embryonic signals during the peri-implantation period in primates.** *J Reprod Fertil Suppl* 1988, **36**:49-58.
76. Hearn JP, Webley GE, Gidley-Baird AA: **Chorionic gonadotrophin and embryo-maternal recognition during the peri-implantation period in primates.** *J Reprod Fertil* 1991, **92**:497-509.
77. Bani D, Bigazzi M, Masini E, Bani G, Sacchi TB: **Relaxin depresses platelet aggregation: in vitro studies on isolated human and rabbit platelets.** *Lab Invest* 1995, **73**:709-716.
78. Lee VH, Fields PA: **Rabbit endometrial relaxin: immunohistochemical localization during preimplantation, pregnancy, and lactation.** *Biol Reprod* 1990, **42**:737-745.
79. Fazleabas AT, Strakova Z: **Endometrial function: cell specific changes in the uterine environment.** *Mol Cell Endocrinol* 2002, **186**:143-147.
80. Jurisicova A, Antenos M, Kapasi K, Meriano J, Casper RF: **Variability in the expression of trophectodermal markers beta-human chorionic gonadotrophin, human leukocyte antigen-G and pregnancy specific beta-1 glycoprotein by the human blastocyst.** *Hum Reprod* 1999, **14**:1852-1858.
81. Srisuparp S, Strakova Z, Fazleabas AT: **The role of chorionic gonadotropin (CG) in blastocyst implantation.** *Arch Med Res* 2001, **32**:627-634.
82. Srisuparp S, Strakova Z, Brudney A, Mukherjee S, Reierstad S, Hunzicker-Dunn M, Fazleabas AT: **Signal transduction pathways activated by chorionic gonadotropin in the primate endometrial epithelial cells.** *Biol Reprod* 2003, **68**:457-464.
83. Kim JJ, Jaffe RC, Fazleabas AT: **Comparative studies on the in vitro decidualization process in the baboon (*Papio anubis*) and human.** *Biol Reprod* 1998, **59**:160-168.
84. Fazleabas AT, Donnelly KM, Srinivasan S, Fortman JD, Miller JB: **Modulation of the baboon (*Papio anubis*) uterine endometrium by chorionic gonadotropin during the period of uterine receptivity.** *Proc Natl Acad Sci U S A* 1999, **96**:2543-2548.
85. Enders AC, Lantz KC, Peterson PE, Hendrickx AG: **From blastocyst to placenta: the morphology of implantation in the baboon.** *Hum Reprod Update* 1997, **3**:561-573.
86. Fields PA, Lee VH: **Conceptus-mediated integrity of endometrial epithelial cells and maintenance of relaxin synthesis in pregnant rabbits: effects of unilateral oviduct ligation.** *Biol Reprod* 1991, **44**:364-374.
87. Benedetto MT, Tabanelli S, Gurpide E: **Estrone sulfate sulfatase activity is increased during in vitro decidualization of stromal cells from human endometrium.** *J Clin Endocrinol Metab* 1990, **70**:342-345.
88. Lane B, Oxberry W, Mazella J, Tseng L: **Decidualization of human endometrial stromal cells in vitro: effects of progesterin and relaxin on the ultrastructure and production of decidual secretory proteins.** *Hum Reprod* 1994, **9**:259-266.
89. Irwin JC, Utian WH, Eckert RL: **Sex steroids and growth factors differentially regulate the growth and differentiation of cultured human endometrial stromal cells.** *Endocrinology* 1991, **129**:2385-2392.
90. Tseng L, Mazella J, Chen GA: **Effect of relaxin on aromatase activity in human endometrial stromal cells.** *Endocrinology* 1987, **120**:2220-2226.
91. Bryant-Greenwood GD, Rutanen EM, Partanen S, Coelho TK, Yamamoto SY: **Sequential appearance of relaxin, prolactin and IGFBP-1 during growth and differentiation of the human endometrium.** *Mol Cell Endocrinol* 1993, **95**:23-29.
92. Dimitriadis E, Robb L, Salamonsen LA: **Interleukin 11 advances progesterone-induced decidualization of human endometrial stromal cells.** *Mol Hum Reprod* 2002, **8**:636-643.
93. Fortier MA, Boulet AP, Lambert RD: **Regulation of adenylate cyclase activity and stimulation response in relation to endometrial receptivity in the rabbit.** *J Reprod Fertil* 1989, **85**:443-450.
94. Judson DG, Pay S, Bhoola KD: **Modulation of cyclic AMP in isolated rat uterine tissue slices by porcine relaxin.** *J Endocrinol* 1980, **87**:153-159.
95. Sanders RB, Bekairi AM, Abulaban FS, Yochim JM: **Uterine adenylate cyclase in the rat: responses to a decidual-inducing stimulus.** *Biol Reprod* 1986, **35**:100-105.
96. Yee GM, Kennedy TG: **Prostaglandin E2, cAMP and cAMP-dependent protein kinase isozymes during decidualization of rat endometrial stromal cells in vitro.** *Prostaglandins* 1993, **46**:117-138.
97. Bergamini CM, Pansini F, Bettocchi S Jr, Segala V, Dallochio F, Bagni B, Mollica G: **Hormonal sensitivity of adenylate cyclase from human endometrium: modulation by estradiol.** *J Steroid Biochem* 1985, **22**:299-303.
98. Gellersen B, Brosens J: **Cyclic AMP and progesterone receptor cross-talk in human endometrium: a decidualizing affair.** *J Endocrinol* 2003, **178**:357-372.
99. Palejwala S, Tseng L, Wojtczuk A, Weiss G, Goldsmith LT: **Relaxin gene and protein expression and its regulation of procollagenase and vascular endothelial growth factor in human endometrial cells.** *Biol Reprod* 2002, **66**:1743-1748.
100. Strakova Z, Szmidi M, Srisuparp S, Fazleabas AT: **Inhibition of matrix metalloproteinases prevents the synthesis of insulin-like growth factor binding protein-1 during decidualization in the baboon.** *Endocrinology* 2003, **144**:5339-5346.
101. Nguyen BT, Yang L, Sanborn BM, Dessauer CW: **Phosphoinositide 3-kinase activity is required for biphasic stimulation of cyclic adenosine 3',5'-monophosphate by relaxin.** *Mol Endocrinol* 2003, **17**:1075-1084.
102. Braddon SA: **Relaxin-dependent adenosine 6',5'-monophosphate concentration changes in the mouse pubic symphysis.** *Endocrinology* 1978, **102**:1292-1299.
103. Bartsch O, Bartlick B, Ivell R: **Phosphodiesterase 4 inhibition synergizes with relaxin signaling to promote decidualization of human endometrial stromal cells.** *J Clin Endocrinol Metab* 2004, **89**:324-334.
104. Bartsch O, Bartlick B, Ivell R: **Relaxin signalling links tyrosine phosphorylation to phosphodiesterase and adenylyl cyclase activity.** *Mol Hum Reprod* 2001, **7**:799-809.
105. Ogle TF: **Progesterone-action in the decidual mesometrium of pregnancy.** *Steroids* 2002, **67**:1-14.
106. Punyadeera C, Verbost P, Groothuis P: **Oestrogen and progestin responses in human endometrium.** *J Steroid Biochem Mol Biol* 2003, **84**:393-410.
107. Ghosh D, Sharkey AM, Charnock-Jones DS, Dhawan L, Dhara S, Smith SK, Sengupta J: **Expression of vascular endothelial growth factor (VEGF) and placental growth factor (PlGF) in conceptus and endometrium during implantation in the rhesus monkey.** *Mol Hum Reprod* 2000, **6**:935-941.
108. Piccinni MP, Scaletti C, Maggi E, Romagnani S: **Role of hormone-controlled Th1- and Th2-type cytokines in successful pregnancy.** *J Neuroimmunol* 2000, **109**:30-33.
109. Elovitz MA, Saunders T, Ascher-Landsberg J, Phillippe M: **Effects of thrombin on myometrial contractions in vitro and in vivo.** *Am J Obstet Gynecol* 2000, **183**:799-804.

110. Enders AC: **Transition from lacunar to villous stage of implantation in the macaque, including establishment of the trophoblastic shell.** *Acta Anat (Basel)* 1995, **152**:151-169.
111. Enders AC, Lantz KC, Schlafke S: **Preference of invasive cytotrophoblast for maternal vessels in early implantation in the macaque.** *Acta Anat (Basel)* 1996, **155**:145-162.
112. Blankenship TN, Enders AC: **Modification of uterine vasculature during pregnancy in macaques.** *Microsc Res Tech* 2003, **60**:390-401.
113. Zygumunt M, Herr F, Munstedt K, Lang U, Liang OD: **Angiogenesis and vasculogenesis in pregnancy.** *Eur J Obstet Gynecol Reprod Biol* 2003, **Suppl 1**:S10-18.
114. Zygumunt M, Herr F, Keller-Schoenwetter S, Kunzi-Rapp K, Munstedt K, Rao CV, Lang U, Preissner KT: **Characterization of human chorionic gonadotropin as a novel angiogenic factor.** *J Clin Endocrinol Metab* 2002, **87**:5290-5296.
115. Zygumunt M, Hahn D, Munstedt K, Bischof P, Lang U: **Invasion of cytotrophoblastic JEG-3 cells is stimulated by hCG in vitro.** *Placenta* 1998, **19**:587-593.
116. Hyder SM, Stancel GM, Chiappetta C, Murthy L, Boettger-Tong HL, Makela S: **Uterine expression of vascular endothelial growth factor is increased by estradiol and tamoxifen.** *Cancer Res* 1996, **56**:3954-3960.
117. Shifren JL, Tseng JF, Zaloudek CJ, Ryan IP, Meng YG, Ferrara N, Jaffe RB, Taylor RN: **Ovarian steroid regulation of vascular endothelial growth factor in the human endometrium: implications for angiogenesis during the menstrual cycle and in the pathogenesis of endometriosis.** *J Clin Endocrinol Metab* 1996, **81**:3112-3118.
118. Greb RR, Heikinheimo O, Williams RF, Hodgen GD, Goodman AL: **Vascular endothelial growth factor in primate endometrium is regulated by oestrogen-receptor and progesterone-receptor ligands in vivo.** *Hum Reprod* 1997, **12**:1280-1292.
119. Umemori EN, Erikson ME, Rocco SE, Sutherland KM, Parsell DA, Mak J, Grove BH: **Relaxin stimulates expression of vascular endothelial growth factor in normal human endometrial cells in vitro and is associated with menometrorrhagia in women.** *Hum Reprod* 1999, **14**:800-806.
120. Ferrara N: **Vascular endothelial growth factor and the regulation of angiogenesis.** *Recent Prog Horm Res* 2000, **55**:15-36.
121. Jaffe RB: **Importance of angiogenesis in reproductive physiology.** *Semin Perinatol* 2000, **24**:79-81.
122. Stouffer RL, Martinez-Chequer JC, Molskness TA, Xu F, Hazzard TM: **Regulation and action of angiogenic factors in the primate ovary.** *Arch Med Res* 2001, **32**:567-575.
123. Wulff C, Dickson SE, Duncan WC, Fraser HM: **Angiogenesis in the human corpus luteum: simulated early pregnancy by HCG treatment is associated with both angiogenesis and vessel stabilization.** *Hum Reprod* 2001, **16**:2515-2524.
124. DiPietro LA, Polverini PJ: **Angiogenic macrophages produce the angiogenic inhibitor thrombospondin 1.** *Am J Pathol* 1993, **143**:678-684.
125. Qin X, Garibay-Tupas J, Chua PK, Cachola L, Bryant-Greenwood GD: **An autocrine/paracrine role of human decidua relaxin. I. Interstitial collagenase (matrix metalloproteinase-1) and tissue plasminogen activator.** *Biol Reprod* 1997, **56**:800-811.
126. Wang-Lee JL, Lenhart JA, Ohleth KM, Ryan PL, Bagnell CA: **Regulation of urokinase- and tissue-type plasminogen activator by relaxin in the uterus and cervix of the prepubertal gilt.** *J Reprod Fertil* 1998, **114**:119-125.
127. Poisner AM: **Regulation of utero-placental prorenin.** *Adv Exp Med Biol* 1995, **377**:411-426.
128. Bani D: **Relaxin: a pleiotropic hormone.** *Gen Pharmacol* 1997, **28**:13-22.
129. Gavino ES, Furst DE: **Recombinant relaxin: a review of pharmacology and potential therapeutic use.** *BioDrugs* 2001, **15**:609-614.
130. Moffett A, Loke YW: **The immunological paradox of pregnancy: a reappraisal.** *Placenta* 2004, **25**:1-8.
131. Drake PM, Red-Horse K, Fisher SJ: **Reciprocal chemokine receptor and ligand expression in the human placenta: Implications for cytotrophoblast differentiation.** *Dev Dyn* 2004, **229**:877-885.
132. Szekeres-Bartho J, Barakonyi A, Par G, Polgar B, Palkovics T, Szereday L: **Progesterone as an immunomodulatory molecule.** *Int Immunopharmacol* 2001, **1**:1037-1048.
133. Piccinni MP, Romagnani S: **Regulation of fetal allograft survival by a hormone-controlled Th1- and Th2-type cytokines.** *Immunol Res* 1996, **15**:141-150.
134. Piccinni MP, Bani D, Beloni L, Manuelli C, Mavilia C, Vocioni F, Bigazzi M, Sacchi TB, Romagnani S, Maggi E: **Relaxin favors the development of activated human T cells into Th1-like effectors.** *Eur J Immunol* 1999, **29**:2241-2247.
135. DeKruyff RH, Ju ST, Hunt AJ, Mosmann TR, Umetsu DT: **Induction of antigen-specific antibody responses in primed and unprimed B cells. Functional heterogeneity among Th1 and Th2 T cell clones.** *J Immunol* 1989, **142**:2575-2582.
136. Del Prete G, Maggi E, Romagnani S: **Human Th1 and Th2 cells: functional properties, mechanisms of regulation, and role in disease.** *Lab Invest* 1994, **70**:299-306.
137. Ashkar AA, Di Santo JP, Croy BA: **Interferon gamma contributes to initiation of uterine vascular modification, decidual integrity, and uterine natural killer cell maturation during normal murine pregnancy.** *J Exp Med* 2000, **192**:259-270.
138. Yki-Jarvinen H, Wahlstrom T, Seppala M: **Human endometrium contains relaxin that is progesterone-dependent.** *Acta Obstet Gynecol Scand* 1985, **64**:663-665.
139. Millar LK, Reiny R, Yamamoto SY, Okazaki K, Webster L, Bryant-Greenwood GD: **Relaxin causes proliferation of human amniotic epithelium by stimulation of insulin-like growth factor-II.** *Am J Obstet Gynecol* 2003, **188**:234-241.
140. Osteen KG, Bruner-Tran KL, Ong D, Eisenberg E: **Paracrine mediators of endometrial matrix metalloproteinase expression: potential targets for progestin-based treatment of endometriosis.** *Ann N Y Acad Sci* 2002, **955**:139-146.
141. Dallenbach-Hellweg G, Dawson AB, Hisaw FL: **The effect of relaxin on the endometrium of monkeys. Histological and histochemical studies.** *Am J Anat* 1966, **119**:61-77.
142. Hisaw FL, Hisaw FL Jr, Dawson AB: **Effects of relaxin on the endothelium of endometrial blood vessels in monkeys (Macaca mulatta).** *Endocrinology* 1967, **81**:375-385.
143. Seibold JR, Clements PJ, Furst DE, Mayes MD, McCloskey DA, Moreland LW, White B, Wigley FM, Rocco S, Erikson M, Hannigan JF, Sanders ME, Amento EP: **Safety and pharmacokinetics of recombinant human relaxin in systemic sclerosis.** *J Rheumatol* 1998, **25**:302-307.
144. Seibold JR, Korn JH, Simms R, Clements PJ, Moreland LW, Mayes MD, Furst DE, Rothfield N, Steen V, Weisman M, Collier D, Wigley FM, Merkel PA, Csuka ME, Hsu V, Rocco S, Erikson M, Hannigan J, Harkonen WS, Sanders ME: **Recombinant human relaxin in the treatment of scleroderma. A randomized, double-blind, placebo-controlled trial.** *Ann Intern Med* 2000, **132**:871-879.
145. Goldsmith LT, Weiss G, Palejwala S, Plant TM, Wojtczuk A, Lambert WC, Ammur N, Heller D, Skurnick JH, Edwards D, Cole DM: **Relaxin regulation of endometrial structure and function in the rhesus monkey.** *Proc Natl Acad Sci U S A* 2004, **101**:4685-4689.
146. Hayes ES, Curnow EC, Trounson AO, Umemori EN: **Relaxin Administration During IVF/ET in Macaca fascicularis [abstract].** *Theriogenol* 2003, **59**:365.
147. Balmaceda JP, Pool TB, Arana JB, Heitman TS, Asch RH: **Successful in vitro fertilization and embryo transfer in cynomolgus monkeys.** *Fertil Steril* 1984, **42**:791-795.
148. Balmaceda JP, Heitman TO, Garcia MR, Pauerstein CJ, Pool TB: **Embryo cryopreservation in cynomolgus monkeys.** *Fertil Steril* 1986, **45**:403-406.
149. Balmaceda JP, Gastaldi C, Ord T, Borrero C, Asch RH: **Tubal embryo transfer in cynomolgus monkeys: effects of hyperstimulation and synchrony.** *Hum Reprod* 1988, **3**:441-443.
150. Curnow EC, Pawitri D, Hayes ES: **Sequential culture medium promotes the in vitro development of Macaca fascicularis embryos to blastocysts.** *Am J Primatol* 2002, **57**:203-12.
151. Zelinski-Wooten MB, Hutchison JS, Hess DL, Wolf DP, Stouffer RL: **Follicle stimulating hormone alone supports follicle growth and oocyte development in gonadotrophin-releasing hormone antagonist-treated monkeys.** *Hum Reprod* 1995, **10**:1658-1666.
152. Curnow EC, Kuleshova LL, Shaw JM, Hayes ES: **Comparison of slow- and rapid-cooling protocols for early-cleavage-stage Macaca fascicularis embryos.** *Am J Primatol* 2002, **58**:169-74.
153. Hendrickx A, Dukelow WR: **Reproductive biology.** In *Non-human primates in biomedical research* Edited by: Bennett BT, Abee CR, Henrickson R. New York: Academic Press; 1995:147-191.

154. Bourne TH, Hagstrom H-G, Granberg S, Josefsson B, Hahlin M, Hellberg P, Hamberger L, Collins WP: **Ultrasound studies of vascular and morphological changes in the human uterus after a positive self-test for the urinary luteinizing hormone surge.** *Hum Reprod* 1996, **11**:369-375.
155. Steer CV, Campbell S, Pampiglione JS, Kingsland CR, Mason BA, Collins WP: **Transvaginal colour flow imaging of the uterine arteries during the ovarian and menstrual cycles.** *Hum Reprod* 1990, **5**:391-395.
156. Strauss J, Coutifaris C: **The endometrium and myometrium: regulation and dysfunction.** In *Reproductive endocrinology* Edited by: Yen SSC, Jaffe RB, Barbieri RL. Philadelphia: W.B. Saunders Co; 1999:218-256.
157. Gonen Y, Casper RF, Jacobsen W, Blankier J: **Endometrial thickness and growth during ovarian stimulation: a possible predictor of implantation in in vitro fertilization.** *Fertil Steril* 1989, **52**:446-450.
158. Coulam CB, Bustillo M, Soenksen DM, Britten S: **Ultrasonographic predictors of implantation after assisted reproduction.** *Fertil Steril* 1994, **62**:1004-1010.
159. Noyes N, Hampton BS, Berkeley A, Licciardi F, Grifo J, Krey L: **Factors useful in predicting the success of oocyte donation: a 3-year retrospective analysis.** *Fertil Steril* 2000, **76**:92-97.
160. Jewett DA, Dukelow VWR: **Cyclicity and gestation length of *Macaca fascicularis*.** *Primates* 1972, **13**:327-330.
161. Kupesic S: **The first three weeks assessed by transvaginal colour Doppler.** *J Perinat Med* 1996, **24**:301-317.
162. Einspanier A: **Relaxin is an important factor for uterine differentiation and implantation in the marmoset monkey.** In *Relaxin 2000* Edited by: Tregear GW, Ivell R, Bathgate RA, Wade JD. Dordrecht: Kluwer Academic Publishers; 2001:73-82.
163. Ferrara N, Davis-Smyth T: **The biology of vascular endothelial growth factor.** *Endocr Rev* 1997, **18**:4-25.
164. Meduri G, Bausero P, Perrot-Appinat M: **Expression of vascular endothelial growth factor receptors in the human endometrium: modulation during the menstrual cycle.** *Biol Reprod* 2000, **62**:439-447.
165. Hyder SM, Stancel GM: **Regulation of angiogenic growth factors in the female reproductive tract by estrogens and progestins.** *Mol Endocrinol* 1999, **13**:805-811.
166. Torry DS, Torry RJ: **Angiogenesis and the expression of vascular endothelial growth factor in endometrium and placenta.** *Am J Reprod Immunol* 1999, **37**:21-29.
167. Maas JWM, Groothuis PG, Dunselman GAJ, de Goeij AFPM, Struyker-Boudier HAJ, Evers JH: **Endometrial angiogenesis throughout the human menstrual cycle.** *Hum Reprod* 2001, **16**:1557-1561.
168. Salle B, Bied-Damon V, Benchaib M, Desperes S, Gaucherand P, Rudigoz RC: **Preliminary report of an ultrasonography and colour Doppler uterine score to predict uterine receptivity in an in-vitro fertilization programme.** *Hum Reprod* 1998, **13**:1669-1673.
169. Klauber N, Rohan RM, Flynn E, D'Amato RJ: **Critical components of the female reproductive pathway are suppressed by the angiogenesis inhibitor AGM-1470.** *Nat Med* 1997, **3**:443-446.
170. Velde EA, Exalto N, Hesselting P, van der Linden HC: **First trimester development of human chorionic villous vascularization studied with CD34 immunohistochemistry.** *Hum Reprod* 1997, **12**:1577-1581.
171. Meegdes BH, Ingenhoes R, Peeters LL, Exalto N: **Early pregnancy wastage: relationship between chorionic vascularization and embryonic development.** *Fertil Steril* 1988, **49**:216-220.
172. Vuorela P, Carpen O, Tulppala M, Halmesmaki E: **VEGF, its receptors and the tie receptors in recurrent miscarriage.** *Mol Hum Reprod* 2000, **6**:276-282.
173. Segal S, Casper RF: **Progesterone supplementation increases luteal phase endometrial thickness and oestradiol levels in in-vitro fertilization.** *Hum Reprod* 1992, **7**:1210-1213.
174. Shaw R Jr, Cameron JA: **Effects of cyclic AMP altering drugs on endotoxin-induced termination of pregnancy.** *Res Commun Chem Pathol Pharmacol* 1979, **24**:49-56.
175. Lomnitzer R, Rabson AR, Koornhof HJ: **The effects of cyclic AMP on leucocyte inhibitory factor (LIF) production and on the inhibition of leucocyte migration.** *Clin Exp Immunol* 1976, **24**:42-48.
176. Goser R, Jaschonek K, Kindler D, Keller E, Schindler AE: **Plasma cAMP in normal and abnormal human pregnancy.** *Gynecol Obstet Invest* 1980, **11**:274-285.
177. Goncharova VN, Morozova MS, Murashko LE, Sidel'nikova VM, Malysheva VA, Zaitseva TS: **Contents of prostaglandins E2 and F2alpha and cAMP in the endometrium of women with habitual abortion during late pregnancy terms.** *Akush Ginekol (Mosk)* 1991, **9**:13-14.
178. Zaitseva TS, Morozova MS, Goncharova VN, Asribekova MK, Karpova SK, Astakhova TM, Murashko LE: **Sex hormone receptors, prostaglandins and cAMP, in functional activity of the uterus.** *Vestn Ross Akad Med Nauk* 1994, **12**:13-16.
179. Stewart DR, Overstreet JW, Celniker AC, Hess DL, Cragun JR, Boyers SP, Lasley BL: **The relationship between hCG and relaxin secretion in normal pregnancies vs peri-implantation spontaneous abortions.** *Clin Endocrinol (Oxf)* 1993, **38**:379-385.
180. Scott JR, Pattison N: **Human chorionic gonadotrophin for recurrent miscarriage.** *Cochrane Database Syst Rev* 2000, **2**:CD000101.
181. Licht P, von Wolff M, Berkholz A, Wildt L: **Evidence for cycle-dependent expression of full-length human chorionic gonadotropin/luteinizing hormone receptor mRNA in human endometrium and decidua.** *Fertil Steril* 2003, **Suppl 1**:718-23.
182. Gardner DK, Lane M: **Towards a single embryo transfer.** *Reprod Biomed Online* 2003, **6**:470-481.
183. Gardner DK, Surrey E, Minjarez D, Leitz A, Stevens J, Schoolcraft WB: **Single blastocyst transfer: a prospective randomized trial.** *Fertil Steril* 2004, **81**:551-555.
184. Binder C, Hagemann T, Husen B, Schulz M, Einspanier A: **Relaxin enhances in-vitro invasiveness of breast cancer cell lines by up-regulation of matrix metalloproteases.** *Mol Hum Reprod* 2002, **8**:789-796.
185. Silvertown JD, Summerlee AJ, Klonisch T: **Relaxin-like peptides in cancer.** *Int J Cancer* 2003, **107**:513-519.
186. Bethea CL, Cronin MJ, Haluska GJ, Novy MJ: **The effect of relaxin infusion on prolactin and growth hormone secretion in monkeys.** *J Clin Endocrinol Metab* 1989, **69**:956-962.
187. Kramer SM, Gibson UE, Fendly BM, Mohler MA, Drolet DW, Johnston PD: **Increase in cyclic AMP levels by relaxin in newborn rhesus monkey uterus cell culture.** *In Vitro Cell Dev Biol* 1990, **26**:647-656.
188. Ryan PL, Baum DL, Lenhart JA, Ohleth KM, Bagnell CA: **Expression of uterine and cervical epithelial cadherin during relaxin-induced growth in pigs.** *Reproduction* 2001, **122**:929-37.
189. Petersen LK, Svane D, Uldbjerg N, Forman A: **Effects of human relaxin on isolated rat and human myometrium and uteroplacental arteries.** *Obstet Gynecol* 1991, **78**:757-762.
190. Longo M, Jain V, Vedernikov YP, Garfield RE, Saade GR: **Effects of recombinant human relaxin on pregnant rat uterine artery and myometrium in vitro.** *Am J Obstet Gynecol* 2003, **188**:1468-1474.
191. Danielson LA, Conrad KP: **Time course and dose response of relaxin-mediated renal vasodilation, hyperfiltration, and changes in plasma osmolality in conscious rats.** *J Appl Physiol* 2003, **95**:1509-1514.
192. Bani G, Maurizi M, Bigazzi M, Bani Sacchi T: **Effects of relaxin on the endometrial stroma. Studies in mice.** *Biol Reprod* 1995, **53**:253-262.
193. Pillai SB, Rockwell LC, Sherwood OD, Koos RD: **Relaxin stimulates uterine edema via activation of estrogen receptors: blockade of its effects using ICI 182,780, a specific estrogen receptor antagonist.** *Endocrinology* 1999, **140**:2426-2429.
194. Taney FH, Vasilenko P, Steinetz BG, Weiss G, Cole D, Goldsmith LT: **The role of estrogen and relaxin in the reproductive abnormalities of mice with Hertwig's anemia.** *Biol Reprod* 1991, **45**:719-726.
195. Parsell DA, Mak JY, Amento EP, Unemori EN: **Relaxin binds to and elicits a response from cells of the human monocytic cell line, THP-1.** *Biol Chem* 1996, **271**:27936-27941.
196. Palejwala S, Stein D, Wojtczuk A, Weiss G, Goldsmith LT: **Demonstration of a relaxin receptor and relaxin-stimulated tyrosine phosphorylation in human lower uterine segment fibroblasts.** *Endocrinology* 1998, **139**:1208-1212.
197. Zhang Q, Liu SH, Erikson M, Lewis M, Unemori E: **Relaxin activates the MAP kinase pathway in human endometrial stromal cells.** *J Cell Biochem* 2002, **85**:536-544.

198. Carrell DT, Peterson CM, Urry RL: **The binding of recombinant human relaxin to human spermatozoa.** *Endocr Res* 1995, **21**:697-707.
199. Mayerhofer A, Engling R, Stecher B, Ecker A, Sterzik K, Gratzl M: **Relaxin triggers calcium transients in human granulosa-lutein cells.** *Eur J Endocrinol* 1995, **132**:507-513.
200. Glock JL, Nakajima ST, Stewart DR, Badger GJ, Brumsted JR: **The relationship of corpus luteum volume to relaxin, estradiol, progesterone, 17-hydroxyprogesterone and human chorionic gonadotropin levels in early normal pregnancy.** *Early Pregnancy* 1995, **1**:206-211.
201. Stewart DR, Erikson MS, Erikson ME, Nakajima ST, Overstreet JW, Lasley BL, Amento EP, Seppala M: **The role of relaxin in glycodeclin secretion.** *J Clin Endocrinol Metab* 1997, **82**:839-846.
202. Steinetz BG, Randolph C, Mahoney CJ: **Serum concentrations of relaxin, chorionic gonadotropin, estradiol-17 beta, and progesterone during the reproductive cycle of the chimpanzee (Pan troglodytes).** *Endocrinology* 1992, **130**:3601-3607.
203. Castracane VD, D'Eletto R, Weiss G: **Relaxin secretion in the baboon (Papio cynocephalus).** In *Factors Regulating Ovarian Function* Edited by: Greenwald GS, Terranova PF. New York: Raven Press; 1983:415.
204. Ghosh D, Stewart DR, Nayak NR, Lasley BL, Overstreet JW, Hendrickx AG, Sengupta J: **Serum concentrations of oestradiol-17beta, progesterone, relaxin and chorionic gonadotrophin during blastocyst implantation in natural pregnancy cycle and in embryo transfer cycle in the rhesus monkey.** *Hum Reprod* 1997, **12**:914-920.
205. Einspanier A, Nubbemeyer R, Schlote S, Schumacher M, Ivell R, Fuhrmann K, Marten A: **Relaxin in the marmoset monkey: secretion pattern in the ovarian cycle and early pregnancy.** *Biol Reprod* 1999, **61**:512-520.

Publish with **BioMed Central** and every scientist can read your work free of charge

"BioMed Central will be the most significant development for disseminating the results of biomedical research in our lifetime."

Sir Paul Nurse, Cancer Research UK

Your research papers will be:

- available free of charge to the entire biomedical community
- peer reviewed and published immediately upon acceptance
- cited in PubMed and archived on PubMed Central
- yours — you keep the copyright

Submit your manuscript here:  
[http://www.biomedcentral.com/info/publishing\\_adv.asp](http://www.biomedcentral.com/info/publishing_adv.asp)

