

Case Report

Congenital Epulis: A Case Report and Estimation of Incidence

David Bosanquet and Graham Roblin

Department of Otorhinolaryngology, University Hospital of Wales, Cardiff CF14 4XW, UK

Correspondence should be addressed to David Bosanquet, davebosanquet@hotmail.com

Received 31 March 2009; Accepted 1 September 2009

Recommended by Ted Tewfik

Congenital Epulis, also known as Neumann's tumour, is a rare congenital growth affecting the gingival mucosa of neonates. It is a benign condition, seen more frequently in females, with multiple Epuli occurring in only 10% of cases. The cause and origin of Congenital Epulis remains unclear. In this article we present a case report of an otherwise healthy female neonate with two Congenital Epuli arising from the upper and lower gingival margin, which were successfully treated with surgical excision. We also present a review of the literature and an estimation of the incidence of Congenital Epulis based on our institutions figures, of 0.0006% (upper 95% confidence interval: 0.0035%).

Copyright © 2009 D. Bosanquet and G. Roblin. This is an open access article distributed under the Creative Commons Attribution License, which permits unrestricted use, distribution, and reproduction in any medium, provided the original work is properly cited.

1. Introduction

Congenital Epulis (also known as Congenital Gingival Granular Cell Tumour) is a rare benign congenital growth of the newborn. It was first described in 1871 by Neumann [1], hence the alternative name is Neumann's Tumour. It usually presents at birth with an obvious mass arising from the gingival mucosa of the maxilla or mandible [2]. There is a marked female preponderance of 8 : 1. Multiple lesions are rare, occurring in only 10% of all case reports. The size of the mass varies from a few millimetres to 9 cm in diameter [3]. They can interfere with feeding and respiration. The recommended treatment is surgical excision under local or general anaesthetic, although spontaneous regression has been reported. There are no reports of recurrence, even if incomplete margins are excised, malignant change, or future disruption to teeth or gums [4].

2. Case Report

An otherwise healthy 1-day-old girl was referred to a large teaching hospital in Cardiff for diagnosis and treatment of two large masses protruding from her mouth. The baby had normal antenatal scans at weeks 12 and 20, and pregnancy had been unremarkable, other than mother being Group

B Streptococcus positive from a high vaginal swab. Mother was fit and well gravida 2 para 1, with no drug history or family history of note. Baby was born at term plus eight days weighing 3.85 kg, pink and breathing spontaneously (Apgar: 9-10).

On examination there were two fleshy, pedunculated masses arising from the upper and lower alveolar ridges measuring $4 \times 3 \times 3$ cm just to the right of the midline. There were no respiratory difficulties. A nasogastric tube was passed due to concerns over feeding. At that time a differential diagnosis of Congenital Epulis, Haemangiomas, and Teratomas was made.

She was booked for excision of these masses under general anaesthesia (Figure 1). Both masses were removed with an elliptical incision to the peduncles (Figure 2). Haemostasis was with diathermy. There was minimal blood loss. Postoperative recovery was uneventful. The child was breastfeeding the day after surgery, and discharged home the following day.

The two masses were fixed and examined histologically (Figures 3 and 4). They showed sheets and clusters of cells containing abundant granular eosinophilic cytoplasm and small uniform nuclei, along with some myxoid areas and areas of haemorrhage and ulceration, confirming the diagnosis of Congenital Epulis.



FIGURE 1: Intraoperative picture showing two large fleshy pedunculated masses arising from the upper and lower alveolar ridges.



FIGURE 2: Intraoperative view showing the pedunculated nature of the mass arising from the lower alveolar ridge. The upper mass has been removed.

3. Discussion

Congenital Epulis is a rare tumour of the neonate. Zucker and Buenecha [5] found only 167 cases reported before 1993. It commonly presents in the neonate, although prenatal diagnosis with Ultrasound has been reported as early as 26 weeks gestation [6]. The lesion usually arises over the incisor-canine region of the maxilla (maxillary/mandibular ratio 3 : 1) [7]. Simultaneous involvement of both maxillary and mandibular alveolar ridges occurs in approximately 10% of reported cases [8]. The lesions commonly interfere with feeding. The diagnosis is usually made on clinical grounds alone, although difficulties may arise when the size of the lesion is small, or the index of suspicion is low. The postnatal ultrasound and MRI appearances of Congenital Epulis have been described. MRI is useful for diagnosis, and superior to ultrasound, showing the gingival origin of Congenital Epulis without local extension [9]. Treatment is with surgical excision, although spontaneous regression has been reported [10].

Epulis is a Greek term literally meaning “of the gums” and is used to describe a wide variety of gum lesions, regardless of their pathological origin. Histologically, Congenital

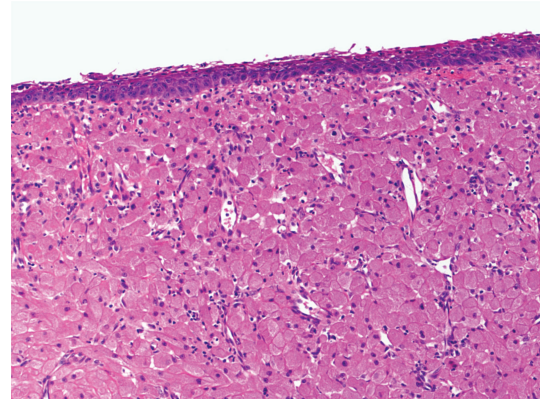


FIGURE 3: Hematoxylin and eosin stain $\times 100$ showing overlying stratified squamous epithelium and vascular stroma.

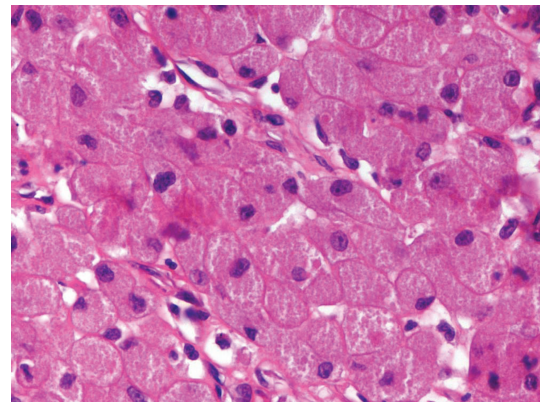


FIGURE 4: Hematoxylin and eosin stain $\times 400$ showing clusters of cells containing abundant granular eosinophilic cytoplasm and small uniform nuclei.

Epulis shows remarkable similarity with the more common Granular Cell Tumours (GCTs) [2, 11]. There are, however, many distinguishing features, such as occurrence solely in the neonate, typical location, plexiform arrangement of capillaries, and lack of pseudoepitheliomatous hyperplasia [12]. GCTs are ubiquitous neoplasms occurring in all age groups, very rarely affecting the gingiva, and can occasionally show malignant change. Immunohistochemical studies have revealed further differences, demonstrating the reactivity of GCTs to S-100 protein and laminin, and their absence in Congenital Epulis [11]. Vered et al. [13] have also recently expanded the immunophenotypic distinction between the two, showing GCTs stain positive for NGFR/p75 and inhibin- α , whereas Congenital Epulis does not.

The precise origin of Congenital Epulis remains unclear. CGTs are considered to arise from Schwann Cells, and hence show strong reactivity to S-100 protein [2]. Various theories of the origin of Congenital Epulis include myoblastic, neurogenic, odontogenic, fibroblastic, and histiocytic [3]. Lack et al. believe it to be basically reactive in origin [14]. It has been suggested that the occurrence of Congenital Epulis solely in neonates, and more commonly in females, implies a hormonal mechanism of development. However, numerous

reports have shown no evidence of either oestrogen or progesterone receptors, and as such suggest an alternative histogenesis [11, 14]. In a review of 33 lesions, Vered et al. conclude that the immunohistochemical profile does not imply any specific cell types for the histogenetic origin of Congenital Epulis [13].

No estimation of incidence of Congenital Epulis has been made to date, to the best of our knowledge. One centre in the USA saw only two cases over the period of 21 years [15]. In University Hospital of Wales, a tertiary referral centre for Otolaryngology and Neonatology, this is the only recorded case of Congenital Epulis since 1980, a total of 28 years. Using incidence of live births (157,454) within that time period, we calculate an incidence of 0.0006% (upper 95% confidence interval: 0.0035%, the inverse of the cumulative Beta distribution [16]). Although most likely an underestimate, this calculation will serve as an approximation of incidence before a more thorough estimation can be undertaken.

References

- [1] E. Neumann, "Ein fall von kongenitaler epulis," *Arch Heilkd*, vol. 12, pp. 189–190, 1871.
- [2] O. Lapid, R. Shaco-Levy, Y. Krieger, L. Kachko, and A. Sagi, "Congenital epulis," *Pediatrics*, vol. 107, no. 2, pp. 22–24, 2001.
- [3] S. Kanotra, S. P. Kanotra, and J. Paul, "Congenital epulis," *Journal of Laryngology and Otology*, vol. 120, no. 2, pp. 148–150, 2006.
- [4] G. C. C. Silva, T. C. Vieira, J. C. Vieira, C. R. Martins, and E. C. Silva, "Congenital granular cell tumour (congenital epulis): a lesion of multidisciplinary interest," *Medicina Oral, Patologia Oral y Cirugia Bucal*, vol. 12, no. 6, pp. 428–430, 2007.
- [5] R. M. Zucker and R. Buenecha, "Congenital epulis: review of the literature and report of a case," *Journal of Oral and Maxillofacial Surgery*, vol. 51, pp. 1040–1043, 1993.
- [6] M. Nakata, K. Anno, L. T. Matsumori, et al., "Prenatal diagnosis of congenital epulis: a case report," *Ultrasound in Obstetrics and Gynecology*, vol. 20, no. 6, pp. 627–629, 2002.
- [7] A. H. Fuhr and P. H. Krogh, "Congenital epulis of the newborn: centennial review of the literature and a report of case," *Journal of Oral Surgery*, vol. 30, no. 1, pp. 30–35, 1972.
- [8] A. M. Loyola, A. F. Gatti, D. S. Pinto Jr., and R. A. Mesquita, "Alveolar and extra-alveolar granular cell lesions of the newborn: report of case and review of literature," *Oral Surgery, Oral Medicine, Oral Pathology, Oral Radiology, and Endodontics*, vol. 84, no. 6, pp. 668–671, 1997.
- [9] M. T. Raissaki, N. Segkos, E. P. Prokopakis, V. Haniotis, G. A. Velegarakis, and N. Gourtsoyiannis, "Congenital granular cell tumor (epulis): postnatal imaging appearances," *Journal of Computer Assisted Tomography*, vol. 29, no. 4, pp. 520–523, 2005.
- [10] N. Kalra, P. Chopra, and S. Malik, "Congenital gingival granular cell tumor—a case report," *Journal of the Indian Society of Pedodontics and Preventive Dentistry*, vol. 16, no. 4, pp. 128–129, 1998.
- [11] P. Leocata, G. Bifaretti, S. Saltarelli, A. Corbacelli, and L. Ventura, "Congenital (granular cell) epulis of the newborn: a case report with immunohistochemical study on the histogenesis," *Annals of Saudi Medicine*, vol. 19, no. 6, pp. 527–529, 1999.
- [12] M. S. Lifshitz, T. J. Flotte, and M. A. Greco, "Congenital granular cell epulis: immunohistochemical and ultrastructural observations," *Cancer*, vol. 53, no. 9, pp. 1845–1848, 1984.
- [13] M. Vered, A. Dobriyan, and A. Buchner, "Congenital granular cell epulis presents an immunohistochemical profile that distinguishes it from the granular cell tumor of the adult," *Virchows Archiv*, vol. 454, no. 3, pp. 303–310, 2009.
- [14] E. E. Lack, A. R. Perez-Atayde, T. J. McGill, and G. F. Vawter, "Gingival granular cell tumour of the newborn (congenital "epulis"): ultrastructural observations relating to histogenesis," *Human Pathology*, vol. 13, pp. 686–689, 1982.
- [15] S. Kay, R. P. Elzay, and M. A. Wilson, "Ultrastructural observations on a gingival granular cell tumor (congenital epulis)," *Cancer*, vol. 27, no. 3, pp. 674–680, 1971.
- [16] M. P. McLaughlin, August 2009, http://www.causascientia.org/math_stat/ProportionCI.html.