
Review

A systematic literature review of automatic Alzheimer's disease detection from speech and language

Ulla Petti, Simon Baker, and Anna Korhonen

Department of Theoretical and Applied Linguistics, University of Cambridge, Language Technology Lab, Cambridge, UK

Corresponding author: Ulla Petti, MPhil, Department of Theoretical and Applied Linguistics, University of Cambridge, Language Technology Lab, 9 West Road, Cambridge CB3 9DP, UK (ump20@cam.ac.uk)

Received 4 February 2020; Revised 14 May 2020; Editorial Decision 6 July 2020; Accepted 14 July 2020

ABSTRACT

Objective: In recent years numerous studies have achieved promising results in Alzheimer's Disease (AD) detection using automatic language processing. We systematically review these articles to understand the effectiveness of this approach, identify any issues and report the main findings that can guide further research.

Materials and Methods: We searched PubMed, Ovid, and Web of Science for articles published in English between 2013 and 2019. We performed a systematic literature review to answer 5 key questions: (1) What were the characteristics of participant groups? (2) What language data were collected? (3) What features of speech and language were the most informative? (4) What methods were used to classify between groups? (5) What classification performance was achieved?

Results and Discussion: We identified 33 eligible studies and 5 main findings: participants' demographic variables (especially age) were often unbalanced between AD and control group; spontaneous speech data were collected most often; informative language features were related to word retrieval and semantic, syntactic, and acoustic impairment; neural nets, support vector machines, and decision trees performed well in AD detection, and support vector machines and decision trees performed well in decline detection; and average classification accuracy was 89% in AD and 82% in mild cognitive impairment detection versus healthy control groups.

Conclusion: The systematic literature review supported the argument that language and speech could successfully be used to detect dementia automatically. Future studies should aim for larger and more balanced datasets, combine data collection methods and the type of information analyzed, focus on the early stages of the disease, and report performance using standardized metrics.

Key words: Alzheimer's disease, dementia, natural language processing, speech, language

INTRODUCTION

Dementia affects around 50 million people worldwide, and, due to population aging, the number of dementia sufferers is expected to triple in the next 30 years.¹ Alzheimer's disease (AD) is the most common neurodegenerative disease contributing to 60%–70% of dementia cases¹ and affecting 1 in 14 people over the age of 65 and 1 in 6 people over the age of 80.²

Detecting AD is often challenging as clear manifestations often don't appear until several years after onset. Diagnosing dementia

can be costly and time-consuming, as it requires access to a qualified clinician. Both factors contribute to 55% of dementia cases remaining undiagnosed in the US.³

In recent years, numerous studies have suggested that language dysfunction is 1 of the earliest signs of cognitive decline,^{4–6} enabling the features of language and speech to act as biomarkers in early dementia detection.^{7–9}

Memory impairment typical in AD contributes to many of these dysfunctions. For example, word retrieval difficulties may be the

earliest signs of AD,¹⁰ manifesting in changes in several language aspects, such as verbal naming,¹¹ speech content density and quantity,¹² accurate meaning communication,⁴ pausation, and speech tempo.^{13,14} Word retrieval is often tested using picture description tasks¹⁵ where the participants are instructed to describe what they see in a picture. In addition to word retrieval processes, these tasks allow assessing lexical and syntactic complexity, the decline of which has also been reported in dementia.^{5,16}

Memory deficit also contributes to the tendency to repeat words and concepts which can result in communication errors, lower coherence, and information density.¹⁷ Repetitions can manifest in spontaneous speech or fluency tests. Typical fluency tests are semantic verbal fluency task (SVF) and phonemic verbal fluency task (PVF) where the participants are asked to name as many words in 1 minute as they can that are either from the same semantic category (SVF) or begin with the same letter (PVF). SVF tasks also allow assessing how semantic information is accessed, which is 1 of the most severely affected language areas in dementia.^{6,18–22}

While until recently language data were analyzed manually, the development of technology has enabled automating the analysis. Automation promotes the inclusion of more data and more detailed analysis revealing patterns that may go unrecognized in manual analysis. Promising results have been achieved in AD detection using natural language processing (NLP), signal processing (SP), and machine learning (ML). NLP is concerned with understanding, learning, and producing human language using computational tools.²³ SP explores signals and the information they convey and is concerned with how they can be transformed, manipulated, and represented.²⁴ ML focuses on the questions concerned with constructing computer programs that can improve automatically based on experience.²⁵

Automating language processing could provide a noninvasive and fast approach to detecting clinical conditions and making screening for dementia accessible and affordable. A successful tool would allow people with limited access to healthcare to screen at home for early signs of dementia using, for example, a mobile application. Automating the analysis of language tests could also benefit clinicians during in-hospital screenings. While these technologies would be useful, they are still in the development stage and are not yet publicly available.

This systematic literature review aims to provide a comprehensive overview of the state-of-the-art of automatic dementia detection from language and speech and identify the best practices and the main challenges to guide further research on the topic.

OBJECTIVES

We aim to systematically analyze 5 key questions: (1) What were the characteristics of the participant groups involved in the studies? (2) What type of language data were collected and how? (3) Which were the most informative language and speech features? (4) What classification methods were used? (5) What classification performance was achieved? These questions are helpful to clinicians and researchers because they help to identify best practices, summarize the state-of-the-art in automatic language processing for dementia detection, and guide further research.

MATERIALS AND METHODS

The review protocol followed is the Preferred Reporting Items for Systematic Reviews and Meta-Analyses (PRISMA) checklist.²⁶

Search process

We searched the 3 largest databases: PubMed, Web of Science, and Ovid, using the keywords 1) automatic Alzheimer's disease detection, 2) Alzheimer natural language processing, 3) Alzheimer speech processing. All articles were published between 2013 and 2019 to allow capturing the most recent literature and focusing on the time period where NLP, SP, and ML have been increasingly used in disease detection from speech and language. The last search date was August 8, 2019.

Selection process

We established the following inclusion criteria in all studies: 1) AD or MCI was the condition of at least 1 of the participants, 2) participants' language or speech was considered, 3) there was either an NLP, SP, or ML element; 4) the focus was on language or speech production, and not comprehension; 5) experimental data were included; 6) full articles were available in English. Initial study selection was performed by 1 reviewer (UP). To minimize the bias in selecting studies, a sample of 274 articles consisting of a random sample of 10% of the articles excluded by the first reviewer ($n = 241$), and all the articles included by the first reviewer ($n = 33$) were independently reviewed by a second reviewer (SB). The initial overall agreement between the 2 reviewers was 97%, with 100% agreement on the 33 included articles. Remaining disagreement was resolved in a discussion with the third author (AK).

Data extraction and synthesis

The following data relevant to the 5 research questions were extracted from all included articles: participant information, the type of language data and the language tests used, the most informative language and speech features, classification methods, and classification performance.

RESULTS

Study selection

The number of articles retrieved from the initial search was 2447. The flow diagram displayed in [Figure 1](#) details the selection process that resulted in 33 included articles.

Study characteristics

Out of 33 studies, 18 focused on AD, 9 on both AD and MCI, and 6 solely on MCI. Twenty- 8 studies focused on spontaneous speech (SS), and 7 on both verbal fluency tasks (VF) and other tasks (OT). On average, 92 participants were included in the studies, with the number of participants ranging from 3 to 484. One study only reported the number of recordings⁷ and all but 2 studies^{27,28} had a healthy control group. The average size of the control group was 43, ranging from 2 to 242,³⁰ and the average size of the AD group was 45, the MCI group was 30, and the dementia group was 27. A large majority of the studies were conducted in European languages: 10 studies in English, 4 in French and Hungarian, 3 in Greek and Turkish, and 1 in Spanish and Italian. One study was carried out with Taiwanese speakers, 5 studies used a dataset consisting of several languages, and 4 studies did not specify the language used. The number of studies grew year by year; 3 studies were published in 2013, 5 studies in 2014, 2015 and 2016, 6 studies in 2017, and 9 studies in 2018. This shows that research in the area is growing.

The information extracted from the 33 studies is summarized in [Table 1](#).

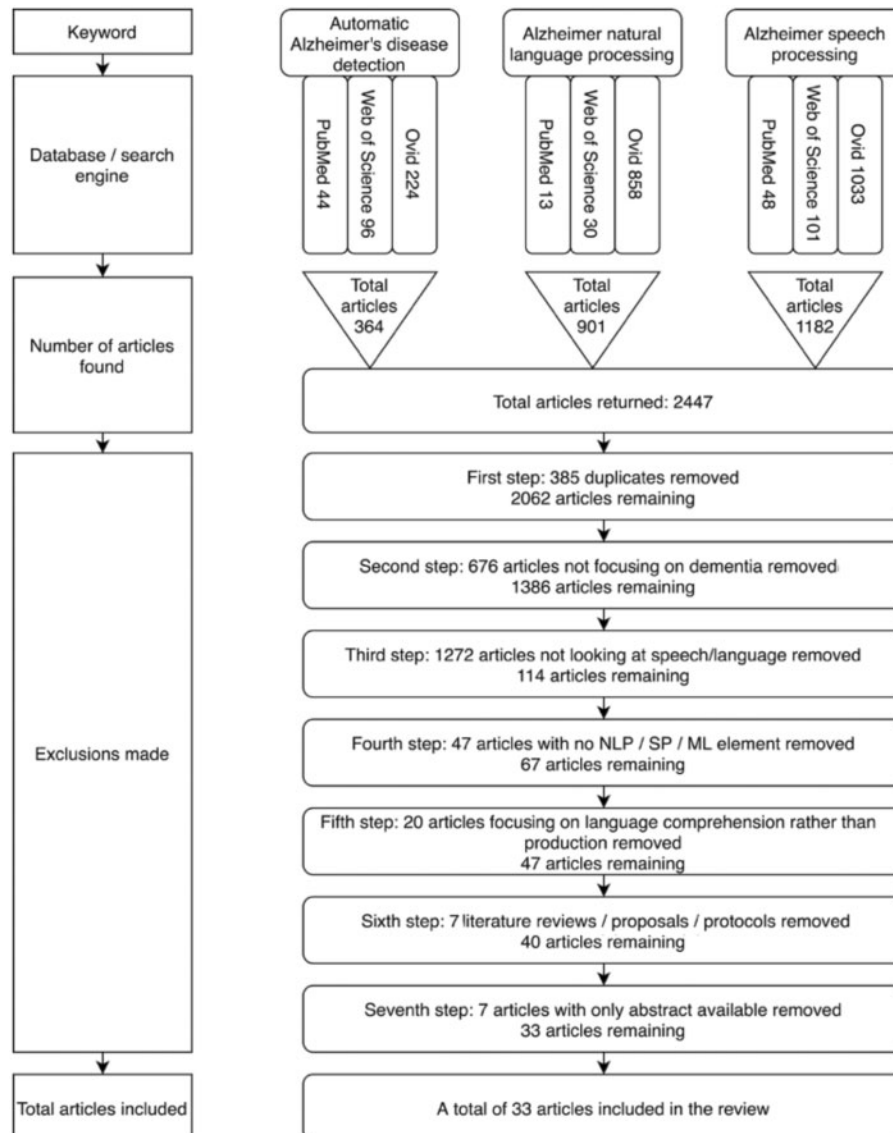


Figure 1. Flow diagram of study selection.

Study examples

In this section we briefly describe 2 studies to provide the reader with a better understanding of what was examined. These 2 studies are chosen to cover different condition groups, data collection, and analysis methods.

Fraser and colleagues⁸ used the recordings of 264 participants describing the Cookie Theft picture available on DementiaBank corpus. Cookie Theft picture is a commonly used test in language and cognitive disorder assessment because it features a complex scene and describing it triggers diverse language. DementiaBank is a corpus available for research purposes that gathers speech and language data from people with AD and other forms of dementia. The 2 participant groups in Fraser's study were AD and healthy control group. A total of 370 language and speech features related to part-of-speech, syntactic complexity, grammatical constituents, psycholinguistics, vocabulary richness, information content, and repetitiveness and acoustics categories were extracted. The dataset was divided into test and training data, and machine learning techniques were applied to explore the accuracy of automatic classification be-

tween healthy and AD group. Standard accuracy of over 81% was achieved.

Clark and colleagues³⁵ included both SVF and PVF tasks from 107 MCI patients and 51 healthy control group participants. The tests were transcribed, and language features, such as the raw count of words, intrusions, repetitions, clusters, switches, mean word frequency, mean number of syllables, algebraic connectivity, and many more were captured. The study paired linguistic measures with the information from magnetic resonance imaging (MRI) scans which allowed creating novel scores. The study concludes that the classifiers trained on novel scores outperformed those trained on raw scores.

Research questions

The research questions were grouped into 5 categories.

What were the characteristics of control and impaired groups?

In 33 studies, 32 different datasets were used. While some studies included up to 3 different datasets for different experiments, a few

Table 1. Information extracted from the studies

No	Study	Impaired group size (s)	Control group size	AD/MCI	Data collection method	Most informative language and speech features	Number of samples used to train the model	Classification algorithm	Classification performance
1	Ammer and Ayed 2018 ³⁰	AD n = 242	n = 242	AD	SS	Repetition, word errors, MLU morphemes, POS	-	SVM, NN, DT	Precision = 79%
2	Beltrami et al 2018 ³¹	aMCI n = 16, mdMCI n = 16, early dementia n = 16 AD n = 5	n = 48	MCI	SS	Acoustic, lexical, syntactic	-	-	-
3	Boye et al 2014 ³²	AD n = 5	n = 5	AD	SS	Lexical and semantic deficit, reduced conversation	-	-	-
4	Chien et al 2018 ³³	1) AD n = 15 2) AD n = 30	1) n = 15 2) n = 30	AD	SS	Speech length, non-silence tokens	150 samples from 60 participants	RNN	AUC = 0.956
5	Clark et al 2014 ³⁴	MCI n = 23, AD n = 10	n = 25	AD, MCI	SVE, PVF	Semantic similarity of words	-	-	-
6	Clark et al 2016 ³⁵	MCI-con n = 24, MCI-non n = 83	n = 51	MCI	SVE, PVF	Coherence, lexical frequency, graph theoretical measures	158	Random forest, SVM, NB, MLP	Acc = 81-84%
7	Fang et al 2017 ²⁹	MCI-con n = 1	n = 2	MCI	SS	Unique and specific words, grammatical complexity	-	-	-
8	Fraser et al 2016 ⁸	AD n = 167	n = 97	AD	SS	Semantic, acoustic, syntactic, information	473 samples from, 264 participants	Logistic regression	Acc = 81%
9	Garrard et al 2017 ²⁸	Probable AD n = 5	n = 0	AD	SS	-	-	-	-
10	Gosztolya et al 2016 ³⁶	MCI = 48	n = 36	MCI	SS	Filled pauses	84	SVM	Acc = 88.1%
11	Gosztolya et al 2019 ³⁷	MCI n = 25, early AD n = 25	n = 25	AD, MCI	SS	Semantic, morphological, acoustic attributes	75	SVM	Acc = 86%
12	Guinn et al 2014 ³⁸	AD n = 28	n = 28	AD	SS	Ratio, POS, lexical, pauses, fillers	56	NB, DT	precision = 80%
13	Hernandez-Dominguez et al 2018 ³⁹	AD n = 169 MCI n = 19	n = 74	AD, MCI	SS	Information coverage, auxiliary verbs, hapax legomena	236 training, 26 testing	SVM, Random Forest	Acc = 87-94%
14	Khodabakhsh et al. 2014a ⁴⁰	AD n = 27	n = 27	AD	SS	Log voicing ratio, average absolute delta formant and pitch	54	SVM, DT	Acc = 88-94%

(continued)

Table 1. continued

No	Study	Impaired group size (s)	Control group size	AD/MCI	Data collection method	Most informative language and speech features	Number of samples used to train the model	Classification algorithm	Classification performance
15	Khodabakhsh et al. 2014b ⁴¹	AD n = 20	n = 20	AD	SS	Fillers, unintelligibility, no of words, confusion, pause & no answer rate	40	SVM, DT	Acc = 90%
16	Khodabakhsh et al 2015 ⁴²	AD n = 28	n = 51	AD	SS	Ratio, POS, speech rate features	79	SVM, NN NB, CTree SVM	Acc = 84%
17	Konig et al 2015 ⁴³	MCI n = 23, AD n = 26	n = 15	AD, MCI	SS, SVF, OT	Speech continuity, ratio	64	SVM	EER = 13–21% Acc = 86%
18	Konig et al 2018 ²⁷	AD n = 27, mixed dementia n = 38, MCI n = 44, SCI n = 56 AD n = 20	n = 0	AD, MCI	SS, SVF, PVF, OT	Location of first word, words' distribution in time	165	SVM	Acc = 86%
19	Lopez-de-Ipina et al 2013a ⁴⁴	AD n = 20	n = 20	AD	SS	Impoverished vocabulary, limited replies	40	MLP	Acc = 75–94.6%
20	Lopez-de-Ipina et al 2013b ⁴⁵	Early AD n = 1 Intermediate AD n = 2 Advanced AD n = 2 AD n = 20	n = 5	AD	SS	Fluency, acoustic	10	SVM, MLP, kNN, DT, NB MLP, KNN	Acc = 93.79% Acc = 95%
21	Lopez-de-Ipina et al 2015 ⁴⁶	AD n = 20	n = 20	AD	SS	Duration, time, frequency	40	MLP, KNN	Acc = 95%
22	Lopez-de-Ipina et al 2018 ⁴⁷	1) AD n = 6, 2) AD n = 20, 3) MCI n = 38 Nr of recordings reported AD n = 214 recordings	1) n = 12, 2) n = 20 3) n = 62 n = 184 recordings	AD, MCI	SS, SVF	Voicing, pauses, F0, harmonicity	18, 40, 100	MLP, CNN	Acc = 73–95%
23	Luz 2018 ⁷		n = 184	AD	SS	Vocalisation, speech rate, number of utterances across discourse event	398	NB	Acc = 68%
24	Martinez de Lizarduy et al 2017 ⁴⁸	1) AD n = 6, 2) AD n = 20, 3) MCI n = 38	1) n = 12, 2) n = 20 3) n = 62 n = 82	AD, MCI	SS	Voicing, pauses, F0, harmonicity	18, 40, 100	kNN, SVM, MLP, CNN	Acc = 80–95%
25	Martinez-Sanchez et al 2016 ⁴⁹	Possible AD n = 45	n = 82	AD	OT	Syllable intervals and their variation	–	–	AUC = 0.87
26	Mirzaei et al 2018 ⁵⁰	Early AD n = 16, MCI n = 16	n = 16	AD, MCI	OT	HNR, voice length, silences	48	kNN, SVM, DT	–
27	Rentouni et al 2017 ⁵¹	AD n = 30	n = 30	AD	OT	–	–	NB, SVM	Acc = 89%

(continued)

Table 1. continued

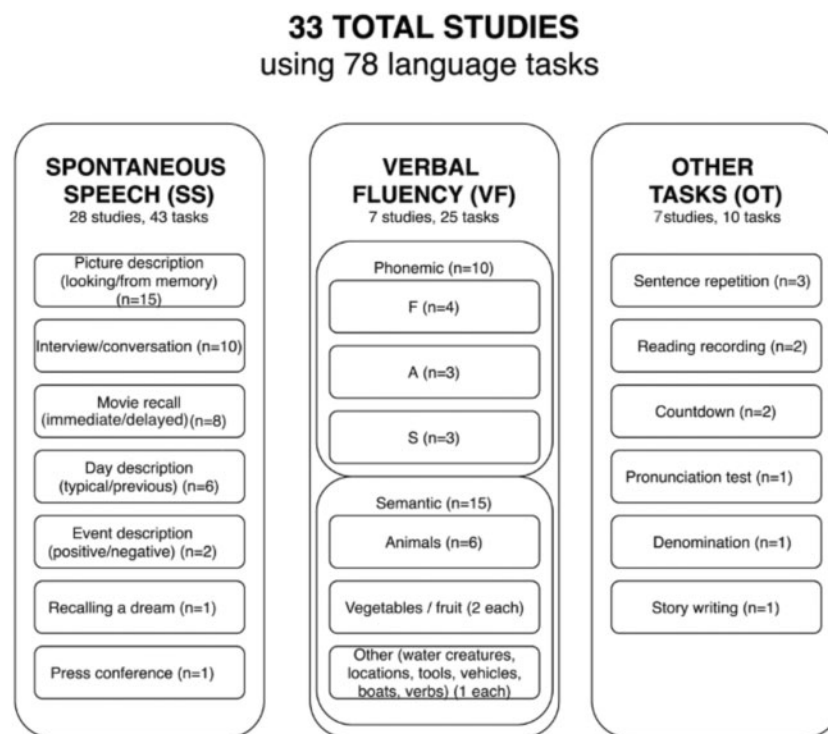
No	Study	Impaired group size (s)	Control group size	AD/MCI	Data collection method	Most informative language and speech features	Number of samples used to train the model	Classification algorithm	Classification performance
28	Sadeghian et al 2017 ⁵²	AD n = 26	n = 46	AD	SS	Long pauses, pause and speech duration	65 training, 7 testing	MLP	Acc = 94.4%
29	Satt et al 2013 ⁹	MCI n = 43, AD n = 27	n = 19	AD, MCI	SS, OT	Verbal reaction time, voiced segments	89	SVM	EER = 15.5–18%
30	Toth et al 2015 ⁵³	MCI n = 32	n = 19	MCI	SS	Pauses, tempo	153 samples from 51 participants	SVM, Random Forest	Acc = 82.4%
31	Toth et al 2018 ⁵⁴	MCI n = 48	n = 36	MCI	SS	Pauses, tempo and duration	84	NB, Random Forest, SVM	Acc = 75%
32	Warmita et al 2018 ⁵⁵	AD n = 169	n = 98	AD	SS	Feature set from Inter-speech 2010	488 samples from 267 participants	GCNN	Acc = 73.6%
33	Zimmerer et al 2016 ⁵⁶	AD n = 48	n = 38	AD	SS	Semantic errors, bigram and trigram proportions	–	Logistic regression	–

Abbreviations: Acc, accuracy; AD, Alzheimer's disease; aMCI, amnesic mild cognitive impairment; AUC, area under curve; CNN, convolutional neural networks; CTree, classification tree; DT, decision tree; EER, equal error rate; GCNN, gated convolutional neural networks; HNR, harmonics-to-noise ratio; kNN, k-nearest neighbor; MCI, mild cognitive impairment; MCI-con, mild cognitive impairment later converted into AD; MCI-non, mild cognitive impairment not converted into AD; MD, mixed dementia; mdMCI, multiple domain mild cognitive impairment; MLP, multilayer perceptron; MLU, mean length of utterance; NB, Naive Bayes; OT, other tasks; POS, part-of-speech; SCI, subjective cognitive impairment; SS, spontaneous speech; SVF, semantic verbal fluency; SVM, support vector machine.

Table 2. Participant information

Participant groups (total number of datasets including the group)	Information variable (number of datasets including this information)	Mean (SD)	Min	Max
Control group (30)	Number of participants (29)	42.69 (46.34)	2	242
	Age (18)	66.94 (5.747)	57	76
	Years of education (11)	13.44 (2.274)	9	18
MCI group (16) Including MCI, aMCI, mdMCI, MCI-con, MCI-non	Number of participants (15)	30.07 (19.41)	1	83
	Age (13)	70.21 (5.637)	57	78
	Years of education (7)	13.15 (2.353)	11	16
AD group (31) Including AD, early AD, intermediate AD, advanced AD, probable AD, possible AD	Number of participants (27)	45.04 (62.68)	1	242
	Age (14)	74.75 (4.360)	66	80
	Years of education (8)	11.80 (2.006)	8	15
Dementia group (2) Including early Dementia, mixed dementia	Number of participants (2)	27.00 (15.56)	16	38
	Age (2)	72.74 (8.990)	66	79
	Years of education (1)	9.380	9	9

Abbreviations: AD, Alzheimer's disease; aMCI, amnesic mild cognitive impairment; MCI, mild cognitive impairment; MCI-con, mild cognitive impairment later converted into AD; MCI-non, mild cognitive impairment not converted into AD; MD, mixed dementia; mdMCI, multiple domain mild cognitive impairment; SD, standard deviation.

**Figure 2.** Division of language tests used to identify different health conditions.

datasets were used more than once across the studies. The conditions considered in this study were AD and MCI. Although MCI did not feature in the search terms, we decided not to exclude the studies focusing solely on MCI because while MCI patients do not meet the diagnostic criteria of dementia, they can sometimes convert to AD. The studies may therefore provide an insight into the early stages of the disease as well as capture the characteristics of those MCI patients who develop AD and of those who do not. To address the heterogeneity this approach creates, the studies focusing on MCI are looked at separately from the studies concerned with AD detection. Two studies also included other dementia groups (early dementia

and mixed dementia) but as both groups only appear once in the dataset, these groups were not included in further analyses.

64% of all studies reported participants' gender and age. The average number of male participants was 35, and female participants was 50. The number of male and female participants was stated to be balanced in 13 studies and notable differences in the number of male and female participants appeared in 15 studies. There were significant differences in participants' average age between healthy control (66.94 ± 5.75) and AD group (74.75 ± 4.36), $t(30) = -4.223$, $P = .000$, and between MCI (70.21 ± 5.64) and AD group (74.75 ± 4.36), $t(25) = -2.351$, $P = .027$. The participants' educa-

	AD		MCI			
	AD	MCI	AD	MCI		
SS	inflected verbs reported speech interpolated clauses question rate depth of parsing tree	width of parsing tree ratio depth:width of parsing tree go-ahead utterances past past participles	Speech or utterance duration or length		syntactic complexity	
	F0 SD harmonicity voicing activation	frequency average absolute delta pitch average absolute delta formant	voiced segment percentage	short-time energy spectral centroid	acoustic impairment	
	difficulty in word finding impovertished vocabulary and language limited answers word length Honore's statistic words indicating quantities	Brunet's index unique words number of specific words frequency of specific words rate of specific words type:token ratio		ratio features content density vocabulary richness	lexical	
	pronoun:noun pronoun frequency prepositions auxiliaries determiners adverbs	conjunctions adverbs verb frequency / rate number of nouns / noun rate adjective rate		open:closed class words ratio information coverage	POS	
	fraction of pauses greater than 10s silence rate average continuous word count logarithm voicing rate bigrams trigrams number of turns	speech rate articulation rate number of pauses (total, silent, filled) length of pauses length of silent pauses pause / duration filled pauses / duration		total length of filled pauses speech tempo speech continuity SD of speech segment duration SD of (un)voiced segment duration temporal regularity of voiced segments	fluency and pausation	
	number of stutters self-corrections incomplete sentences unintelligible word rate	confusion rate no answer rate incomplete words repetitions			errors	
	semantic error rate					
	semantic attributes				semantic processing	
	VF				algebraic connectivity radius transitivity	graph theory
					F0 SD harmonicity voicing activation	acoustic impairment
				lexical frequency	lexical	
		duration of silent and voiced segments	position of words in time		fluency and pausation	
coherence semantic similarity between words					semantic processing	
OT				ratio features	ratio features	
				harmonics to noise ratio		
				energy envelope periodicity	acoustic impairment	
		token duration and total number syllable duration and intervals speech and articulation rate duration of silent and voiced segments	position of words in time pauses per token number of silences estimate of insertions and pauses		fluency and pausation	
				errors per token	errors	
				average verbal reaction time	reaction	

Figure 3. Most informative language and speech features across SS, VF, and OT tasks (AD, Alzheimer's Disease; MCI, mild cognitive impairment; OT, other tasks; POS, Part-of-Speech; SD, Standard Deviation; SS, spontaneous speech; VF, verbal fluency).

tion level was considered in 45% of the studies. The control group participants had spent, on average, more years in education than the impaired group in all but 1 study where the participants' education level was considered.

Handedness was controlled for in 2 studies, and all but 4 studies mentioned the language the participants' spoke.

See [Table 2](#) for participant information.

What kind of language data were collected and how?

From 33 studies, 28 included at least one SS task, 7 studies included a VF task, and 7 studies an OT.

The aim of SS tasks is to trigger spontaneous speech. This was most often attempted by asking the participants to describe a picture or by engaging in a conversation with the participants. Other tasks used to induce SS included recalling a movie, a day, an event, or a dream. In 1 study, the transcripts from press conferences were used as a source of SS. SS tasks allow analyzing a variety of language attributes, such as word retrieval processes, syntactic, semantic and acoustic impairment, and communication errors.

There are 2 types of VF tasks: PVF and SVF. In the PVF task, the participants are instructed to name as many words as possible in 1 minute that start with the same letter, such as the letter F. In the SVF task, the participants are instructed to name as many words from the same semantic category as possible in 1 minute, such as animals. Traditionally, the measure most commonly used to evaluate performance in fluency tests is the number of total or correct words produced in 1 minute. More recently, NLP has been used for automatic analysis of semantic clusters and SP for the analysis of temporal and acoustic measures.

OT include all the tests that were not concerned with SS or VF, for example, repeating a sentence, reading out a paragraph, writing a story, counting down numbers, pronunciation, or denomination test. These tasks allow for the examination of different aspects of memory, semantic processing, and acoustic and phonetic measures.

In all tests, the language data were audio or video recorded and/or transcribed.

[Figure 2](#) provides a summary of the methods and tasks used to collect language and speech data.

What language and speech features were the most informative?

The 33 studies included experiments from 21 individual research groups. Out of the individual research groups, 18 included SS tasks and 5 VF and OT tasks. The most informative language and speech features are looked at in 2 categories: those characteristic to AD, and those to MCI.

The number of the language and speech features used in the analyses ranged from 4 to 920. As the studies with a large number of features did not report all the features considered, it was difficult to examine what features were studied the most extensively. To avoid the synthesis bias towards the features that have been studied more⁵⁷ and the multiple publication bias of over-representing 1 study or research group with significant results,⁵⁸ each feature that has been reported the most informative by at least 1 research group is reported on equal basis. See [Figure 3](#) for the most informative language features from SS, VF, and OT tasks.

What methods were used to classify healthy people and the people with dementia?

Out of 33 studies, 27 used ML to distinguish between healthy people and the people with different medical conditions. Different ML

algorithms were used across studies: NNs were used in 17 studies, SVMs in 16, DTs in 11, Naïve Bayes in 7, and logistic regression in 2 studies. See [Table 3](#) for details and definitions.

What classification performance has been achieved?

The studies reviewed in this paper tend to use different measures to report classification performance (accuracy, precision, Area Under Curve Receiver Operating Characteristics (AUC – ROC), making the comparison of performance difficult. Standard accuracy refers to the level of agreement between the reference value and the test result, and precision refers to the level of agreement between independent test results obtained under stipulated conditions.⁶³ ROC curve shows the relationship between clinical sensitivity and specificity for every possible decision threshold. AUC measures the ability of the model to distinguish between the groups for all decision thresholds.

The heterogeneity of the performance measures, as well as the participant groups, data collection, and analysis methods does not allow for a direct comparison of classification accuracy. We aim to tackle this issue in 2 steps. First, we provide a table with qualitative information about the methods that each study concluded to have worked best. Second, as standard accuracy was the most widely used performance measure, we compare the results and the methods used to achieve them in the studies that reported standard accuracy.

[Table 4](#) presents the settings and the approaches that were used when top performance was achieved in each study.

Standard accuracy was used as a classification performance measure in 17 tasks across 15 studies that aimed to distinguish the people with AD from the people without AD and in 8 studies looking at MCI. The average classification accuracy was significantly lower when detecting MCI ($81.7\% \pm 5.3\%$) than when detecting AD ($88.9\% \pm 8.0\%$), $t(14) = 2.40$, $P = .031$.

Top result in AD detection (95% classification accuracy) was achieved using an SS task to collect information about voiced and unvoiced segments and other acoustic and phonetic features. Lopez-de-Ipina et al used NN to distinguish the people with AD from those without AD.^{46–47}

Top result in MCI detection (86% classification accuracy) was reached by König et al²⁷ using SVF and PVF to collect language data, SP to analyze the data, and SVM to discriminate between the people with and without MCI.

DISCUSSION

We found that the sociodemographic variables often differ between healthy and impaired groups, especially age. The language data were usually collected using SS tasks, with the most informative language features falling under lexical, syntactic, semantic, and acoustic impairment. NNs, SVMs, and DTs performed well as classifiers; 89% average classification accuracy was reached in AD detection and 82% in MCI detection.

Synthesis

The majority of the studies reviewed in this article demonstrate promising results in identifying AD or MCI based on speech and language data. While the results are promising, there is also room for improvement. For example, age, gender, education level, and handedness can affect speech and the outcome of language tests. However, there were significant differences in participants' ages between healthy and AD groups, more female than male participants were included in the studies, people with a clinical condition tended to be

Table 3. Details of ML methods used and the performance achieved. "Average of all reported outcomes" refers to the average of all measures reported across studies using the ML algorithm and performance measure. "Average of best reported outcomes" takes the average measure of the best performance reported in each study (1 measure per study) using the ML algorithm and performance measure

Classification	AD vs healthy control				CD vs healthy control			
	performance measure	acc (n)	AUC (n)	EER (n)	precision (n)	AUC (n)	precision (n)	EER (n)
Neural Nets (NNs) (n = 17) NNs are computer systems that are similar in structure to biological neural networks and mimic the way animals learn ⁵⁹	average of all reported outcomes	86% (17)	-	-	0.64 (4)	-	-	-
	average of best reported outcomes	88% (6)	0.96 (1)	-	0.69 (1)	-	-	-
Support Vector Machines (SVMs) (n = 16) SVMs are supervised models that use training data belonging to 1 or another category, and assign a category to test data based on the training data ⁶⁰	average of all reported outcomes	81% (33)	-	-	0.68 (4)	-	-	19% (3)
	average of best reported outcomes	88% (9)	-	-	0.79 (1)	-	-	19% (2)
Decision Trees (DTs) (n = 11) DTs take several input variables and, based on the observations about them, predict the value of a target variable ⁶¹	average of all reported outcomes	82% (24)	-	-	0.63 (5)	-	-	-
	average of best reported outcomes	90% (4)	-	-	0.96 (2)	-	-	-
Naive Bayes (NB) (n = 7) NB classifiers are simple probabilistic classifiers where each variable contributes independently to the assigning of class label ⁶²	average of all reported outcomes	81% (8)	-	-	0.81 (1)	-	-	-
	average of best reported outcomes	81% (4)	-	-	0.81 (1)	-	-	-

Abbreviations: acc, accuracy; AD, Alzheimer's disease; AUC, area under curve; CD, cognitive decline; EER, equal error rate.

Table 4. Most effective technologies

ID	Study	Most effective technologies	Classification performance
1	Ammer and Ayed 2018 ³⁰	feature selection: kNN; classifier: SVM	precision = 79%
2	Beltrami et al 2018 ³¹	Acoustic features	–
3	Boye et al 2014 ³²	–	–
4	Chien et al 2018 ³³	bidirectional LSTM RNN	AUC = 0.956
5	Clark et al 2014 ³⁴	Semantic similarity features	–
6	Clark et al 2016 ³⁵	Classifiers with novel scores including MRI data	Acc = 81–84%
7	Fang et al 2017 ²⁹	length of sentence, unique words, non-specific, and specific words	–
8	Fraser et al 2015 ⁸	Using 35 features	Acc = 82%
9	Garrard et al 2017 ²⁸	Certain scripts and motives	–
10	Gosztolya et al 2016 ³⁶	automatically selected feature set, correlation-based feature selection technique	Acc = 88.1%
11	Gosztolya et al 2019 ³⁷	AD: combination of linguistic and acoustic features; MCI: semantic and acoustic features	Acc = 86%
12	Guinn et al 2014 ³⁸	go-ahead utterances and certain fluency measures	precision = 80%
13	Hernandez-Dominguez et al 2018 ³⁹	AD detection: RFC with coverage and linguistic features; decline detection: RFC with a combination of features with P-value <.001 when correlating with cognitive impairment	Acc = 87–94%
14	Khodabakhsh et al 2014a ⁴⁰	SVM, logarithm of voicing ratio, average absolute delta feature of the first formant, and average absolute delta pitch feature	Acc = 88–94%
15	Khodabakhsh et al 2014b ⁴¹	SVM, DT	Acc = 90%
16	Khodabakhsh et al 2015 ⁴²	SVM classifier with the silence ratio feature	Acc = 84%
17	Konig et al 2015 ⁴³	–	EER = 13–21%
18	Konig et al 2018 ²⁷	Fluency tasks	Acc = 86%
19	Lopez-de-Ipina et al 2013a ⁴⁴	Including fractal dimension sets	Acc = 75–94.6%
20	Lopez-de-Ipina et al 2013b ⁴⁵	SVM and features from 3 datasets: spontaneous speech, emotional response and energy features	Acc = 93.79%
21	Lopez-de-Ipina et al 2015 ⁴⁶	MLP for Katz's and Castiglioni's algorithm with a window-size of 320 points	Acc = 95%
22	Lopez-de-Ipina et al 2018 ⁴⁷	SS task and AD patients: the recording environment within a relaxing atmosphere; the presence of subtle cognitive changes in the signal due to a more open language; and the use of AD patients instead of MCI subjects.	Acc = 73–95%
23	Luz 2018 ⁷	–	Acc = 68%
24	Martinez de Lizarduy et al 2017 ⁴⁸	spontaneous speech task; CNN	Acc = 80–95%
25	Martinez-Sanchez et al 2016 ⁴⁹	The standard deviation of the duration of ΔS	AUC = 87%
26	Mirzaei et al 2018 ⁵⁰	kNN with 18 features	–
27	Rentoumi et al 2017 ⁵¹	–	Acc = 89%
28	Sadeghian et al 2017 ⁵²	using all the potential features, including and choosing the 5 most informative ones: 1) MMSE, 2) race, 3) fraction of pauses greater than 10s, 4) fraction of speech length that was pause, 5) words indicating quantities	Acc = 94.4%
29	Satt et al 2013 ⁹	Using 20 features	EER = 15.5–18%
30	Toth et al 2015 ⁵³	SVM with manually extracted features	Acc = 82.4%
31	Toth et al 2018 ⁵⁴	RFC with automatic and significant feature set	Acc = 66.7–75%
32	Warnita et al 2018 ⁵⁵	10-layer CNN with Interspeech 2010 feature set	Acc = 73.6%
33	Zimmerer et al 2016 ⁵⁶	connectivity, closed-class words, semantic error rate	–

Abbreviations: Acc, accuracy; AD, Alzheimer's disease; CNN, convolutional neural networks; DT, decision trees; ET, emotional temperature; kNN, k-nearest neighbor; LSTM RNN, long short-term memory recurrent neural network; MLP, multilayer perception; MMSE, mini-mental state examination; MRI, magnetic resonance imaging; RFC, random forest classifier; SVM, support vector machine.

less educated than the control group, and only 6% of the studies considered whether the participants were right- or left-handed. Similarly, the majority of participants spoke European languages, leading to very few non-European languages being considered.

Two popular and well-performing language tasks were SS and VF. Promising results were achieved using language features relating to word retrieval, semantic and acoustic impairment, and error rate.

Various ML algorithms were used to classify between different condition groups. The best performing models were NNs, SVMs, and DTs.

The measures used to report performance were heterogeneous, making the comparison of the technologies difficult. Focusing on the studies that used accuracy as a metric, we found that the highest classification accuracy was achieved using SS task, SP method, and NN classifiers when distinguishing between AD and healthy groups,

and VF task, SP method, and SVM classifier when detecting MCI. Average classification accuracy was 89% in AD and healthy group distinction, and 82% in MCI detection.

Recommendations for future research

Based on the findings of this study, we propose the following:

1. We encourage future research to construct demographically and socioeconomically balanced datasets to minimize the effect of age and other factors on the results.
2. We suggest including a larger number of participants to allow more data to be used when training a machine learning model.
3. We recommend including non-European languages in future studies as the vast majority of the studies so far have been conducted in European languages.
4. Early detection of dementia could benefit from longitudinal studies concerned with MCI to examine the language of those participants who convert from MCI to AD and of those who do not. This approach was taken in Clark and colleagues.³⁵
5. In future studies, we suggest integrating linguistic analysis and signal processing to achieve maximum accuracy. Most studies focus on either SP and acoustic features or NLP and linguistic features. However, most language tasks are audio recorded which would allow collecting both acoustic and linguistic data (using both audio samples and transcripts). We suggest that adding linguistic variables (lexical, semantic, syntactic) to SP approach, and vice versa, adding SP measures (acoustic, voiced and unvoiced segment analysis) to studies mainly focusing on linguistic features. This will allow for the expansion of the set of variables beneficial in ML approach and could lead to more accurate classification results. An example of a study that has used both acoustic and linguistic measures was conducted by Fraser and colleagues.⁸
6. The reviewed papers use slightly different metrics to measure the performance making it difficult to compare. We recommend using the 4 standard measures: Accuracy, Precision, Recall, F1-score. AUC can be used in addition to those 4.

The studies reviewed in this article also include 19 suggestions for future research: 1) ensure standardized recordings and language samples, 2) add new and challenging tasks, 3) calibrate audio measurements, 4) add new features, 5) couple speech analysis with neuroimaging, 6) include follow-up studies, 7) conduct longitudinal studies, 8) add linguistic and acoustic features, 9) automate feature selection, 10) include voice onset time, 11) extend the number of MCI samples, 12) research the effect of sample size in healthy control groups, 13) perform cross-linguistic studies, 14) use automatic transcription of language tasks, 15) include nonverbal communication (gestures), 16) include syllable-timed and low-resource languages, 17) replicate the results of currently available studies, 18) evaluate the temporal change and the severity of the disease, and 19) include more forms of dementia, such as vascular dementia.

Study limitations

To evaluate the limitations and establish the confidence level of the outcomes, we adapt GRADE guidelines.⁶⁴

There are 5 main limitations, 4 of which contributed to the decision to rate down the outcome confidence level from high to moderate.

First, the chance of publication bias must be acknowledged, meaning that only the studies with more significant results might have been published.^{65,66} Although publication bias was undetected

in the current review, it is especially common in literature reviews written in the early stages of the specific research area due to negative studies being delayed⁶⁶ and should therefore be mentioned. Potential publication bias was not used to decrease the confidence level.

Second, there is a potential synthesis bias in the study location, as only articles written in English were included.^{57,58} This did not allow for the data available in other languages to be considered, limiting our dataset and possibly contributing to the small number of non-European languages being included. Language bias can especially affect the outcomes relating to the most informative language features, as these are directly dependent on the language used.

Third, there is a risk of bias in the outcomes of studies focusing on AD detection because the AD group was very often significantly older than the control group. This increases the chance of the most informative language features being characteristic to older age instead of AD, as well as the classification algorithms differentiating between older and younger, and not necessarily detecting AD.

Fourth, there is a risk of bias when reporting the outcomes of the studies concerned with MCI. The fact that our search terms did not include MCI is likely to have led to a situation where additional studies did exist—but were inaccessible to us—and therefore did not get included in the analysis.

Fifth, there is a potential risk of bias in reporting the classification performance, as often only the best outcomes are included, potentially leading to skewed understanding of how well the algorithms worked.

The last 4 limitations contributed to the confidence levels of our outcomes concerned with informative language features, classification algorithms, and classification performance to decrease from high to moderate.

CONCLUSION

In this systematic review on automatic AD detection from speech and language, we report the characteristics of healthy and impaired groups, summarize the language tests that have been used, present the language and speech features that have shown to be the most informative, and identify the machine learning algorithms used and the classification performance achieved.

Our findings show that the balance in the demographic variables across dementia and healthy groups could be improved. We also found that studies looking at SS have achieved top accuracy in distinguishing between AD and healthy conditions. Informative language and speech features capture problems with word retrieval, semantic processing, acoustic impairment, and errors in speech and communication. From ML algorithms, NNs and SVMs were the most widely used, and top accuracy was also achieved with these models. Standard accuracy was the most common metric used to report the classification performance, with the average accuracy in AD detection being 89%, and in MCI detection 82%.

In the future studies, we suggest standardizing the metrics used to report classification performance, focusing on MCI and the early stages of dementia to contribute to early detection, combining signal processing and linguistic information, including non-European languages, and constructing larger and more demographically balanced datasets.

FUNDING

This work was supported by the Economic and Social Research Council Cambridge Doctoral Training Partnership (DTP) grant number ES/P000738/1.

AUTHOR CONTRIBUTIONS

SB and AK contributed to the conception of the manuscript. UP performed article collection and examination, data summarization and analysis, and drafted the manuscript. SB contributed significantly to article screening and data analysis and revised and edited the manuscript. AK provided research direction, commented on the manuscript, and approved the final version of the manuscript.

CONFLICT OF INTEREST STATEMENT

None declared.

REFERENCES

- World Health Organization. Dementia. <https://www.who.int/news-room/fact-sheets/detail/dementia> Accessed December 10, 2019
- National Health Service. About dementia. <https://www.nhs.uk/conditions/dementia/about/> Accessed December 10, 2019
- Prince M, Comas-Herrera A, Knapp M, et al. World Alzheimer report 2016: improving healthcare for people living with dementia: coverage, quality and costs now and in the future. <http://eprints.lse.ac.uk/67858/> Accessed February 2, 2020
- Mirheidari B, Blackburn D, Harkness K, et al. Toward the automation of diagnostic conversation analysis in patients with memory complaints. *J Alzheimers Dis* 2017; 58 (2): 373–87.
- Ahmed S, Haigh AMF, de Jager CA, et al. Connected speech as a marker of disease progression in autopsy-proven Alzheimer's disease. *Brain* 2013; 136 (12): 3727–37.
- Forbes-McKay KE, Venneri A. Detecting subtle spontaneous language decline in early Alzheimer's disease with a picture description task. *Neurol Sci* 2005; 26 (4): 243–54.
- Luz S, de la Fuente S, Albert P. A method for analysis of patient speech in dialogue for dementia detection. *Audio Speech Process* 2018; arxiv:1811.09919.
- Fraser KC, Meltzer JA, Rudzicz F. Linguistic features identify Alzheimer's disease in narrative speech. *J Alzheimers Dis* 2015; 49 (2): 407–22.
- Satt A, Sorin A, Toledo-Ronen O, et al. Evaluation of speech-based protocol for detection of early-stage dementia. *Interspeech* 2013; https://www.isca-speech.org/archive/archive_papers/interspeech_2013/i13_1692.pdf Accessed February 2, 2020
- Fox N, Warrington EK, Seiffer AL, et al. Presymptomatic cognitive deficits in individuals at risk of familial Alzheimer's disease: a longitudinal prospective study. *Brain* 1998; 121 (9): 1631–9.
- Silagi ML, Bertolucci PHF, Ortiz KZ. Naming ability in patients with mild to moderate Alzheimer's disease: what changes occur with the evolution of the disease? *Clinics (Sao Paulo, Brazil)* 2015; 70 (6): 423–8.
- de Lira JO, Minett TSC, Bertolucci PHF, et al. Evaluation of macrolinguistic aspects of the oral discourse in patients with Alzheimer's disease. *Int Psychogeriatr* 2018; 31 (9): 1343–53.
- Meilán JJG, Martínez-Sánchez F, Carro J, et al. Acoustic markers associated with impairment in language processing in Alzheimer's Disease. *Span J Psychol* 2012; 15 (2): 487–94.
- Pistono A, Jucla M, Barbeau EJ, et al. Pauses during autobiographical discourse reflect episodic memory processes in early Alzheimer's disease. *J Alzheimers Dis* 2016; 50 (3): 687–98.
- de Lira JO, Minett TSC, Bertolucci PHF, et al. Analysis of word number and content in discourse of patients with mild to moderate Alzheimer's disease. *Dement Neuropsychol* 2014; 8 (3): 260–5.
- Garrard P, Maloney LM, Hodges JR, et al. The effects of very early Alzheimer's disease on the characteristics of writing by a renowned author. *Brain* 2004; 128 (2): 250–60.
- Smith JA, Knight RG. Memory processing in Alzheimer's disease. *Neuropsychologia* 2002; 40 (6): 666–82.
- Forbes KE, Venneri A, Shanks MF. Distinct patterns of spontaneous speech deterioration: an early predictor of Alzheimer's disease. *Brain Cogn* 2002; 48 (2–3): 356–61.
- Rodríguez-Aranda C, Waterloo K, Johnsen SH, et al. Neuroanatomical correlates of verbal fluency in early Alzheimer's disease and normal aging. *Brain Lang* 2016; 155–156: 24–35.
- Venneri A, Jahn-Carta C, De Marco M, et al. Diagnostic and prognostic role of semantic processing in preclinical Alzheimer's disease. *Biomark Med* 2018; 12 (6): 637–51.
- Garrard P, Carroll E. Lost in semantic space: a multi-modal, non-verbal assessment of feature knowledge in semantic dementia. *Brain* 2006; 129 (5): 1152–63.
- Hamberger MJ, Friedman D, Ritter W, et al. Event-related potential and behavioral correlates of semantic processing in Alzheimer's patients and normal controls. *Brain Lang* 1995; 48 (1): 33–68.
- Hirschberg J, Manning CD. Advances in natural language processing. *Science* 2015; 349 (6245): 261–6.
- Oppenheim AV, Schaffer RW, Buck JR. *Discrete-Time Signal Processing*. 2nd ed. Upper Saddle River, NJ: Prentice Hall; 1998: 1–5.
- Mitchell TM. *Machine Learning*. New York: McGraw-Hill Science/Engineering/Math; 1997: xv–xvii.
- Moher D, Shamseer L, Clarke M, et al. Preferred reporting items for systematic review and meta-analysis protocols (PRISMA-P) 2015 statement. *Syst Rev* 2015; 4 (1): 1.
- König A, Satt A, Sorin A, et al. Use of speech analyses within a mobile application for the assessment of cognitive impairment in elderly people. *Curr Alzheimer's Res* 2018; 15 (2): 120–9.
- Garrard P, Nemes V, Nikolic D, et al. Motif discovery in speech: application to monitoring Alzheimer's disease. *Curr Alzheimer's Res* 2017; 14 (9): 951–9.
- Fang C, Janwattanapong P, Martin H, et al. Computerized neuropsychological assessment in mild cognitive impairment based on natural language processing-oriented feature extraction. In: proceedings of IEEE International Conference on Bioinformatics and Biomedicine; November 13–17, 2017; Kansas City.
- Ammar R, Ayed Y. Speech processing for early Alzheimer disease diagnosis: machine learning based approach. In: proceedings of IEEE/ACS International Conference on Computer Systems and Applications; October 28–November 1, 2018; Aqaba, Jordan.
- Beltrami D, Gagliardi G, Rossini Favretti R, et al. Speech analysis by natural language processing techniques: a possible tool for very early detection of cognitive decline? *Front Aging Neurosci* 2018; 10.
- Boyé M, Grabar N, Thi Tran M. Contrastive conversational analysis of language production by Alzheimer's and control people. *Stud Health Technol Inform* 2014; 205.
- Chien YW, Hong SY, Cheah WT, et al. An assessment system for Alzheimer's disease based on speech using a novel feature sequence design and recurrent neural network. In: 2018 IEEE International Conference on Systems, Man, and Cybernetics; October 7–10, 2018; Miyazaki, Japan.
- Clark DG, Wadley VG, Kapur P, et al. Lexical factors and cerebral regions influencing verbal fluency performance in MCI. *Neuropsychologia* 2014; 54 (1): 98–111.
- Clark DG, McLaughlin PM, Woo E, et al. Novel verbal fluency scores and structural brain imaging for prediction of cognitive outcome in mild cognitive impairment. *Alzheimer's Dement* 2016; 2: 113–22.
- Gosztolya G, Toth L, Grosz T, et al. Detecting mild cognitive impairment from spontaneous speech by correlation-based phonetic feature selection.

- Interspeech* 2016. https://www.researchgate.net/publication/307889002_Detecting_Mild_Cognitive_Impairment_from_Spontaneous_Speech_by_Correlation-Based_Phonetic_Feature_Selection Accessed February 2020
37. Gosztolya G, Vincze V, Tóth L, *et al.* Identifying mild cognitive impairment and mild Alzheimer's disease based on spontaneous speech using ASR and linguistic features. *Comput Speech Lang* 2019; 53: 1–17.
 38. Guinn C, Singer B, Habash A. A comparison of syntax, semantics, and pragmatics in spoken language among residents with Alzheimer's disease in managed-care facilities. In: 2014 IEEE Symposium on Computational Intelligence in Healthcare and e-Health, Proceedings; December 9–12, 2014; Orlando, FL.
 39. Hernández-Domínguez L, Ratté S, Sierra-Martínez G, *et al.* Computer-based evaluation of Alzheimer's disease and mild cognitive impairment patients during a picture description task. *Alzheimer's Dement* 2018; 10: 260–8.
 40. Khodabakhsh A, Kuscuoglu S, Demiroglu C. Detection of Alzheimer's disease using prosodic cues in conversational speech. In: 22nd Signal Processing and Communications Applications Conference; April 23–25, 2014; Trabzon, Turkey.
 41. Khodabakhsh A, Kuscuoglu S, Demiroglu C. Natural language features for detection of Alzheimer's disease in conversational speech. In: 2014 IEEE-EMBS International Conference on Biomedical and Health Informatics; June 1–4, 2014; Valencia, Spain.
 42. Khodabakhsh A, Yesil F, Guner E, *et al.* Evaluation of linguistic and prosodic features for detection of Alzheimer's disease in Turkish conversational speech. *J Audio Speech Music Proc* 2015; 2015 (1).
 43. Konig A, Satt A, Sorin A, *et al.* Automatic speech analysis for the assessment of patients with predementia and Alzheimer's disease. *Alzheimer's Dement* 2015; 1 (1): 112–24.
 44. Lopez-de-Ipina K, Alonso JB, Travieso CM, *et al.* On the selection of non-invasive methods based on speech analysis oriented to automatic Alzheimer disease diagnosis. *Sensors* 2013a; 13 (5): 6730–45.
 45. Lopez-de-Ipina K, Alonso JB, Sole-Casals J, *et al.* On automatic diagnosis of Alzheimer's disease based on spontaneous speech analysis and emotional temperature. *Cogn Comput* 2013b; 7 (1): 44–55.
 46. Lopez-De-Ipina K, Sole-Casals J, Eguiraun H, *et al.* Feature selection for spontaneous speech analysis to aid in Alzheimer's disease diagnosis: a fractal dimension approach. *Comput Speech Lang* 2015; 30 (1): 43–60.
 47. Lopez-de-Ipina K, Martínez-de-Lizarduy U, Calvo P, *et al.* Advances on automatic speech analysis for early detection of Alzheimer disease: a non-linear multi-task approach. *Curr Alzheimer's Res* 2018; 15 (2): 139–48.
 48. Martínez De Lizarduy U, Salomón PC, Gómez Vilda P, *et al.* ALZUMERIC: A decision support system for diagnosis and monitoring of cognitive. *Loquens* 2017; 4 (1): 037.
 49. Martínez-Sánchez F, Meilan JJG, Vera-Ferrandiz JA, *et al.* Speech rhythm alterations in Spanish-speaking individuals with Alzheimer's disease. *Ag-ing Neuropsychol Cogn* 2016; 24 (4): 418–34.
 50. Mirzaei S, El Yacoubi M, Garcia-Salicetti S, *et al.* Two-stage feature selection of voice parameters for early Alzheimer's disease prediction. *IRBM* 2018; 39 (6): 430–5.
 51. Rentoumi V, Paliouras G, Danasi E, *et al.* Automatic detection of linguistic indicators as a means of early detection of Alzheimer's disease and of related dementias: a computational linguistics analysis. In: 8th IEEE International Conference on Cognitive Infocommunications, CogInfoCom; September 11–14, 2017; Debrecen, Hungary.
 52. Sadeghian R, Schaffer JD, Zahorian SA. Speech processing approach for diagnosing dementia in an early stage. *Interspeech* 2017. https://www.researchgate.net/publication/319185628_Speech_Processing_Approach_for_Diagnosing_Dementia_in_an_Early_Stage Accessed February 2, 2020
 53. Tóth L, Gosztolya G, Vincze V, *et al.* Automatic detection of mild cognitive impairment from spontaneous speech using ASR. *Interspeech* 2015. https://www.isca-speech.org/archive/interspeech_2015/i15_2694.html Accessed February 2, 2020
 54. Toth L, Hoffmann I, Gosztolya G, *et al.* A speech recognition-based solution for the automatic detection of mild cognitive impairment from spontaneous speech. *Curr Alzheimer's Res* 2018; 15 (2): 130–8.
 55. Warnita T, Inoue N, Shinoda K. Detecting Alzheimer's disease using gated convolutional neural network from audio data. *Interspeech* 2018. <https://arxiv.org/abs/1803.11344> Accessed February 2, 2020
 56. Zimmerer VC, Wibrow M, Varley RA. Formulaic language in people with probable Alzheimer's disease: a frequency-based approach. *J Alzheimer's Dis* 2016; 53 (3): 1145–60.
 57. Booth A, Papaioannou D, Sutton A. *Systematic Approaches to a Successful Literature Review*. London: SAGE; 2016.
 58. Song F, Parekh S, Hooper L, *et al.* Dissemination and publication of research findings: and updated review of related biases. *Health Technol Assess* 2010; 14 (8): iii–193.
 59. McCulloch WS, Pitts W. A logical calculus of the ideas immanent in nervous activity. *Bull Math Biophys* 1943; 5 (4): 115–33.
 60. Cortes C, Vapnik V. Support-vector networks. *Mach Learn* 1995; 20 (3): 273–97.
 61. Quinlan J. Induction of decision trees. *Mach Learn* 1986; 1 (1): 81–106.
 62. Maron ME. Automatic indexing: an experimental inquiry. *J Assoc Comput Mach* 1961; 8 (3): 404–17.
 63. ISO 5725-1:1994: Accuracy (trueness and precision) of measurement methods and results. Part 1: general principles and definitions. <https://www.iso.org/obp/ui/#iso:std:iso:5725:-1:ed-1:v1:en> Accessed April 17, 2020.
 64. Guyatt G, Oxman AD, Akl EA, *et al.* GRADE guidelines: 1. Introduction—GRADE evidence profiles and summary of findings tables. *J Clin Epidemiol* 2011; 64 (4): 383–94.
 65. Rosenthal R. The file drawer problem and tolerance for null results. *Psychol Bull* 1979; 86 (3): 638–41.
 66. Guyatt G, Oxman AD, Montori V, *et al.* GRADE guidelines: 5. Rating the quality of evidence—publication bias. *J Clin Epidemiol* 2011; 64 (12): 1277–82.