



Cytological analysis of hybrids among triticales and trigopiros

Maia Fradkin¹, Eduardo Greizerstein¹, Héctor Paccapelo², Víctor Ferreira³, Ezequiel Grassi³, Lidia Poggio¹ and María Rosa Ferrari⁴

¹Laboratorio de Citogenética y Evolución, Departamento de Ecología, Genética y Evolución, Facultad de Ciencias Exactas y Naturales, Universidad de Buenos Aires, Ciudad Autónoma de Buenos Aires, Argentina.

²Facultad de Agronomía, Universidad Nacional de La Pampa, Santa Rosa, La Pampa, Argentina.

³Genética, Facultad de Agronomía y Veterinaria, Universidad Nacional de Río Cuarto, Río Cuarto, Córdoba, Argentina.

⁴Física Biológica, Facultad de Ciencias Veterinarias, Universidad de Buenos Aires, Ciudad Autónoma de Buenos Aires, Argentina.

Abstract

We studied three different tricepiros: (Don Santiago x Don Noé), (Cumé x Horovitz) and (Cumé x Don Noé). The tricepiro (Don Santiago x Don Noé) was obtained by crossing the triticales Don Santiago INTA (AABBRR, $2n = 6x = 42$) with the trigopiro Don Noé INTA (AABBDDJJ, $2n = 8x = 56$). The number of chromosomes for the F_1 was $2n = 49$, the most frequent meiotic configuration being 14 bivalents and 21 univalents. The univalents were situated in the periphery of the equatorial plane, whereas the bivalents were located in the central zone. The chromatids in some of the univalents split when bivalents underwent reductional division in anaphase I. There were few laggard chromosomes or chromatids at this phase. The number of chromosomes ($2n = 48-58$) was high and variable, and the number of bivalents per cell (18-23) also high in F_3 individuals. In all F_8 tricepiros (Don Santiago x Don Noé), F_{12} tricepiros (Cumé x Horovitz) and F_{12} tricepiros (Cumé x Don Noé), the number of chromosomes ($2n = 42$) was the same, these retaining the rye genome, as demonstrated by GISH and FISH. These new synthesized allopolyploids constitute interesting models for investigating the evolutionary changes responsible for diploidization, and the chromosomal and genomic re-ordering that cannot be revealed in natural allopolyploids.

Key words: hybrids, meiosis, tricepiro, univalents, reductional division.

Received: November 27, 2008; Accepted: April 28, 2009.

Introduction

Polyploidy has played an important role in plant speciation. It has been estimated that perhaps more than 70% of Angiosperms have undergone polyploidy one or more times at some point in their evolutionary history (Ma and Gustafson, 2005). Molecular and cytological studies have revealed that many species traditionally considered as diploid, such as maize, *Arabidopsis* and soybean, among others, are in fact paleopolyploids (Ma *et al.*, 2004).

A segmental allopolyploid originated from related species is highly likely to undergo homoeologous chromosome pairing during meiosis, thus reducing its fertility. Moreover, the coexistence of genetically closely related genomes results in genome-wide gene redundancy, which

also contributes to the genetic instability of allopolyploids (Feldman and Levy, 2005).

Recent studies have shown that rapid genome changes occur following F_1 or allopolyploid formation: 1) the non-random elimination of coding and non-coding DNA sequences; 2) epigenetic changes, such as DNA methylation of coding and non-coding DNA, leading, among other things, to gene silencing; 3) the activation of genes and retroelements, which, in turn, alters the expression of adjacent genes (Feldman and Levy, 2005); and 4) chromosome reorganization, with the gain or loss of chromosomes or whole genomes (Bernardo *et al.*, 1988; Soler *et al.*, 1990; Soltis and Soltis, 2000; Ferrari *et al.*, 2005). An example of a particular case of the harmonic coexistence of several genomes achieved by chromosomal rearrangement and gain or loss of chromosomes or even completed genomes, was observed in the tricepiro Don René INTA (Ferrari *et al.*, 2005). This cultivar was obtained by crossing a hexaploid triticales ($2n = 42$, AABBRR, A, B from wheat and R from rye) with

Send correspondence to Maia Fradkin. Laboratorio de Citogenética y Evolución, Departamento de Ecología, Genética y Evolución, Facultad de Ciencias Exactas y Naturales, Universidad de Buenos Aires, Intendente Güiraldes 2160, Ciudad Universitaria C1428EGA, Buenos Aires, Argentina. E-mail: maiafradkin@ege.fcen.uba.ar.

an octoploid trigopiro ($2n = 8x = 56$, AABBDDJJ, with A, B, D from wheat and J from wheatgrass), and became stable at $2n = 42$. *In situ* hybridization techniques (GISH and FISH) have demonstrated that the genomic constitution of this allopolyploid is AABBRR with introgression of *Thinopyrum* (J genome) in chromosome pair 6 of the wheat A genome (Ferrari *et al.*, 2005).

Tricepiros are synthetic cereals of high forage value obtained by crossing wheat, rye and wheatgrass. They have a marked resistance to disease and high tolerance to freezing and drought (Ferreira *et al.*, 2007).

The aim of this work was to analyse the meiotic behaviour of a tricepiro Don Santiago x Don Noé F_1 hybrid. On the other hand, our purpose was to determine the chromosome number and genomic composition in advanced generations of tricepiros from different origins (triticale Don Santiago x trigopiro Don Noé, triticale Cumé-UNRC x trigopiro Horovitz and triticale Cumé-UNRC x trigopiro Don Noé), so as to improve knowledge on the mechanisms of polyploid stabilization.

Materials and Methods

Plant material

Triticale Cumé-UNRC was obtained and cultivated at the Universidad Nacional de Río Cuarto (UNRC), Province of Córdoba, Argentina.

Tricepiro (Don Santiago x Don Noé): The F_1 hybrid was obtained at the Universidad Nacional de La Pampa, Province of La Pampa, Argentina, by crossing triticale Don Santiago INTA with trigopiro Don Noé INTA. Successive generations were obtained by self-fertilization, all of which being cultivated at the same locale. The F_1 , F_3 and F_8 generations were those studied in this work.

Tricepiro (Cumé x Horovitz) was obtained at the Universidad Nacional de Río Cuarto (UNRC), Province of Córdoba, Argentina, by crossing triticale Cumé UNRC with trigopiro "Horovitz". Successive generations were obtained by self-fertilization, all being cultivated at the same locale. F_{12} individuals were those studied in the present work.

Tricepiro (Cumé x Don Noé) was obtained at the Universidad Nacional de Río Cuarto (UNRC), Province of Córdoba, Argentina, by crossing triticale Cumé-UNRC with trigopiro Don Noé INTA. Successive generations were obtained by self-fertilization, all being cultivated at the same locale. F_{12} individuals were hereby studied.

All trigeneric hybrids had triticale as the female parent and trigopiro as the pollen donor.

Between three and five individuals were studied in all the generations, except in F_1 , in which only one individual was studied.

Meiotic analysis

For meiotic analysis, young flowers were fixed in 3:1 (absolute alcohol: acetic acid) and kept at -5°C . Anthers

were squashed in 2% propionic haematoxylin with 1% ferric citrate as mordant (Nuñez, 1968). The Meiotic Index (MI) was calculated as follows: $MI = (\text{Number of normal tetrads} / \text{Total number of tetrads studied}) \times 100$.

In situ hybridization

In situ hybridization techniques (GISH, genomic *in situ* hybridization, and FISH, fluorescent *in situ* hybridization) were performed on mitotic cells according to Ferrari *et al.* (2005). GISH was carried out using rye genomic DNA as a probe and unlabelled wheat DNA for blocking. Rye genomic DNA was isolated from adult leaves of *S. cereale* cv. *Quehue* and wheat genomic DNA from *T. aestivum* cv. *Klein Estrella*.

FISH was carried out using the pSc 119.2 probe. This probe contains the 120-bp family subclone isolated by McIntyre *et al.* (1990), and permits the identification of all the rye chromosomes and some of the wheat.

At least 10 cells per plant of each hybrid were analyzed.

Results

Tricepiro (Don Santiago x Don Noé)

The presence of 21 univalents in the periphery of the equatorial plate in 70% of metaphase I cells ($n = 16$) was detected in F_1 individuals. The remaining chromosomes were very close to each other, and appeared to be bivalents (Figure 1a). In 50% of the cells in anaphase I, 14 chromosomes were observed at each pole, while the rest remained in the equatorial plate (Figure 1b,c). Figure 1c shows the presence of 49 chromosomes in the F_1 hybrid. Some univalents disjointed the chromatids at this phase (Figure 1b).

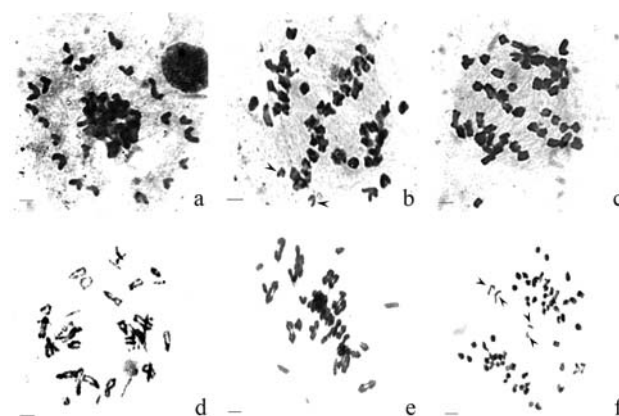


Figure 1 - (a-c) Meiotic cells of F_1 tricepiro (Don Santiago x Don Noé). (a) Metaphase I with 21 univalents in the periphery of the equatorial plate; (b and c) early anaphase I, some chromosomes are at the poles while others remain in the equatorial plate. Note the presence of 49 chromosomes in (c). (d-f) Meiotic cells of F_3 hybrid tricepiro (Don Santiago x Don Noé) with different chromosome numbers. (d) Diplotene with at least 20 bivalents; (e) Metaphase I cell with ca 23 bivalents; (f) anaphase I with 58 chromosomes. Arrows indicate univalents separating chromatids. Bars = 10 μm .

Most of the univalents and chromatids were located at the poles at the end of anaphase I. At telophase I ($n = 33$), 36% of the dyads were normal, whereas 33% showed only one lagging chromosome and 31% more than one lagged and up to eight lagging.

The F_3 segregants were obtained by self-fertilization. When meiosis was analysed in seven individuals from F_3 , we found a high number of bivalents per cell (from 18 to 23), besides a chromosome number varying from ca $2n = 48$ to 58 (Figure 1d,e). A few lagging chromosomes with precocious separation of sister chromatids were observed at anaphase I (Figure 1f). The tetrads were analysed, the MIs so obtained ranging between 7.3 and 53.0. The MI was also determined in F_8 , the final value being 51.0.

GISH was carried out in two F_8 lines by using rye DNA as a probe and wheat DNA as a blocking, and by counterstaining with DAPI. This study revealed a chromosome number $2n = 42$ with 14 rye chromosomes (Figure 2a).

Triticale Cumé

This cultivar is a hexaploid triticales ($2n = 42$). Seven pairs of rye chromosomes were identified with the pSc119.2 probe (Figure 2b).

Tricepiro (Cumé x Horovitz)

This hybrid was analysed at an advanced generation, namely F_{12} , and was found to possess a chromosome number of $2n = 42$. *In situ* hybridization with rye genomic DNA, blocking with wheat genomic DNA and counterstaining with DAPI led to the detection of 14 rye chromosomes (Figure 2c).

We were able to identify 14 rye chromosomes (Figure 2e) with the pSc119.2 probe. The signals observed with this probe in the middle of the 6RS chromosome and at the terminal end of the 7RL chromosome of the parental triticales Cumé were absent in this hybrid (Figure 2b,e). This probe also permitted the identification of the 14 chromosomes of the wheat B genome and various chromosomes of the A genome (Figure 2e).

Tricepiro (Cumé x Don Noé)

This hybrid was analysed in F_{12} and was found to have a chromosome number of $2n = 42$. As with all the other hybrids, *in situ* hybridization with rye genomic DNA, blocking with wheat genomic DNA and counterstaining with DAPI led to the detection of 14 rye chromosomes (Figure 2d).

With the pSc119.2 probe, we were also able to identify the 14 rye chromosomes and the 14 chromosomes belonging to the B genome, besides some chromosomes from the wheat A genome (Figure 2f). The signal pattern of the hybrid rye chromosomes seems to be similar to that observed in its progenitor, triticales Cumé (Figure 2b).

Discussion

F_1 of the tricepiro hybrid (Don Santiago x Don Noé) has a chromosome number of $2n = 49$. Since its parents were a hexaploid triticales ($2n = 6x = 42$, AABBRR) and an octoploid trigopiro ($2n = 8x = 56$, AABBDDJJ), the expected genomic composition of F_1 would be AABBDRJ. In this F_1 , 14 bivalents and 21 univalents were observed in metaphase I. Theoretically, it is expected that the bivalents correspond to homologous pairing between chromosomes belonging to wheat A and B genomes, whereas the 21 univalents could be chromosomes of D (*Triticum aestivum*), R (*Secale cereale*) and J (*Thinopyrum ponticum*) genomes. The low frequency of pairing between wheat A, B and D genomes due to the presence of the Ph gene, together with the low homology of R and J genomes with each other and with wheat genomes, as observed by certain authors (Dewey, 1984; Jauhar *et al.*, 2004), support this hypothesis.

Meiotic analysis of F_1 of the tricepiro (Don Santiago x Don Noé) infer that both early segregated bivalents and the 14 chromosomes observed at each pole of anaphase I could belong to A and B genomes. Equational segregation in anaphase I was observed in some univalents. This phenomenon was also observed by other authors in anaphase I of hybrids in which wheat and rye were involved (Gorban and Shulyndin, 1978; Silkova *et al.*, 2003). Silkova *et al.* (2003) postulated that the split of univalents could be part of the mechanism responsible for meiotic restitution in wheat-rye polyploids. In the present work, equational segregation observed in anaphase I could be involved in the increase in the number of chromosomes and bivalents present in F_3 individuals.

The chromosome number of the tricepiro F_8 (Don Santiago x Don Noé) lines, as well as the F_{12} (Cumé x Horovitz) and (Cumé x Don Noé) lines, was $2n = 42$. GISH revealed the presence of 14 rye chromosomes in all. In previous studies, crossing different accessions of triticales and trigopiros gave rise to the same chromosome number ($2n = 42$) in advanced generations (Ferrari *et al.*, 2005; Ferreira *et al.*, 2007). These results and those obtained in the present work showed similar behaviour in triticales x trigopiro hybrids, since all became stabilized with $2n = 42$ and retained the rye R genome. The same tendency was observed in different hybrids involving wheat (Bernardo *et al.*, 1988; Soler *et al.*, 1990). Bernardo *et al.* (1988) studied rye chromosome behaviour in the progeny from AABBRR hybrids, and proposed that there was total elimination of rye chromosomes when individually present but retention when the complete genome was present.

The presence of univalents that undergo chromatid separation in anaphase I, and the low frequency of lagging chromosomes in telophase I, as observed in the F_1 of tricepiro (Don Santiago x Don Noé), together with the high number of bivalents in the F_3 individuals, led us to suggest preferential migration of the R genome. A mechanism of

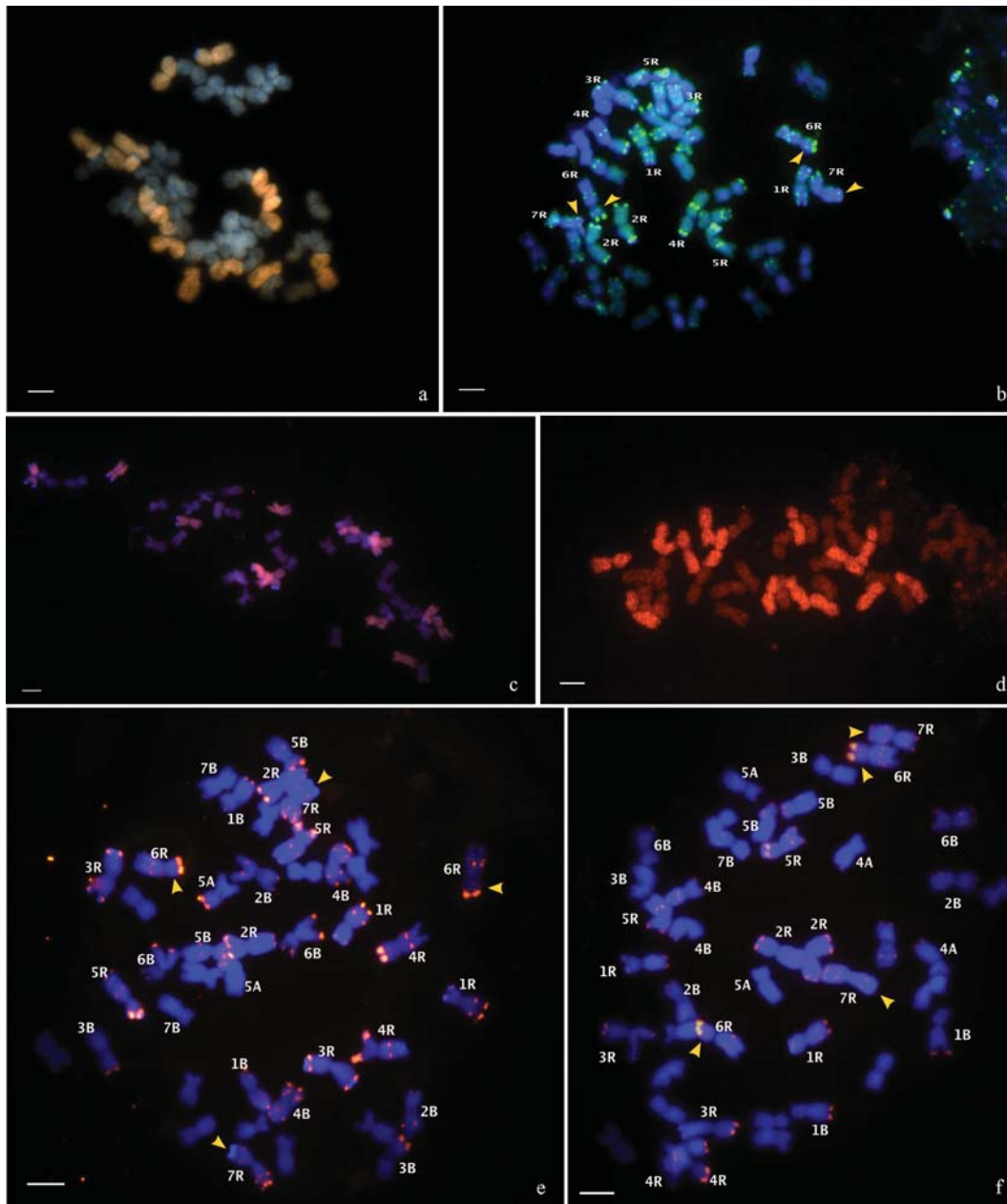


Figure 2 - (a) Mitotic metaphase cells of two F_3 tricepiros (Don Santiago x Don Noé). GISH using DNA from *S. cereale* as a probe, detected with Cy3, blocked with unlabelled wheat DNA and with DAPI counterstaining. Note that the chromosome number is $2n = 42$ and the 14 rye chromosomes disclose strong hybridization signals. b) FISH using pSc119.2 probe, detected with digoxigenin and revealed with FITC (green) in a mitotic triticales Cumé cell. (c and e) Mitotic metaphase cells of tricepiro (Cumé x Horovitz) and (d and f) of tricepiro (Cumé x Don Noé). (c and d) GISH using DNA from *S. cereale* as a probe, detected with Cy3 and blocked with unlabelled wheat DNA. Note that the chromosome number is $2n = 42$ and the 14 rye chromosomes disclose strong hybridization signals. (e and f) FISH using the pSc 119.2 probe and detected with conjugate Streptavidine-Cy3 (red). Arrows show hybridization signals in 6RS, and in 7RL chromosomes of triticales Cumé and tricepiro (Cumé x Don Noé), absent in tricepiro (Cumé x Horovitz). Bars = 10 μ m.

gamete selection that promotes the retention of the R genome could also be associated with this behaviour.

It is interesting to point out the difference found between the tricepiros (Cumé x Horovitz) and (Cumé x Don Noé), concerning hybridization signals of the pSc119.2 probe in 6RS and 7RL chromosomes, when compared with their progenitor triticales Cumé. The loss of these signals in the tricepiro (Cumé x Horovitz) could be a consequence of

the role of fast change mechanisms on the structure and composition of the genome, as postulated by certain authors (Ma *et al.*, 2004; Ma and Gustafson, 2005; Feldman and Levy, 2005; Ferrari *et al.*, 2005).

These new synthesized allopolyploids will be interesting models for investigating those evolutionary changes that are responsible for genetic diploidization and chromo-

somal and genomic reordering that cannot be revealed in natural allopolyploids.

Acknowledgments

We dedicate this work to the memory of the late Dr. Carlos Naranjo. We would like to thank the advice, observations and enthusiasm we received from him both at the beginning of this work and during all the years we worked together. The authors thank Dr. Alba G. Papeschi for her helpful comments on the manuscript. This research was carried out in Argentina and supported by grants from the “Consejo Nacional de Investigaciones Científicas y Técnicas (CONICET)” (PIP 5927), Universidad de Buenos Aires (X178 and X446) and Agencia Nacional de Promoción Científica y Técnica (PICT 03-14119).

References

- Bernardo A, Luengo P and Jouve N (1988) Chromosome constitution in G2 and G3 progenies of 6x - Triticale X *T. turgidum* L. hybrids. *Euphytica* 37:157-166.
- Dewey DR (1984) The genomic system of classification as a guide to intergeneric hybridization with the perennial Triticeae. In: Gustafson JP (ed) *Gene Manipulation in Plant Improvement*. Plenum Publishing Corp., New York, pp 209-279.
- Feldman M and Levy AA (2005) Allopolyploidy - A shaping force in the evolution of wheat genomes. *Cytogenet Genome Res* 109:250-258.
- Ferrari MR, Greizerstein EJ, Paccapelo HA, Naranjo CA, Cuadrado A, Jouve N and Poggio L (2005) The genomic composition of tricepiro, a synthetic forage crop. *Genome* 48:154-159.
- Ferreira V, Scaldaffero M, Grassi E and Szpiniak B (2007) Nivel de ploidía, estabilidad citológica y fertilidad en cruces de triticales x trigopiro (tricepiros). *J Basic Appl Genet* 18:15-22.
- Gorban GS and Shulyndin AF (1978) Hybrids of triticales and agrotriticum II. *Tsitol Genet* 12:118-124.
- Jauhar PP, Dogramaci M and Peterson TS (2004) Synthesis and cytological characterization of trigeneric hybrids of durum wheat with and without Ph1. *Genome* 47:1173-1181.
- Ma XF and Gustafson JP (2005) Genome evolution of allopolyploids: A process of cytological and genetic diploidization. *Cytogenet Genome Res* 109:236-249.
- Ma XF, Fang P and Gustafson JP (2004) Polyploidization-induced genome variation in triticales. *Genome* 47:839-848.
- McIntyre CL, Pereira S, Moran LB and Appels R (1990) New *Secale cereale* (rye) DNA derivatives for the detection of rye chromosome segments in wheat. *Genome* 33:635-640.
- Nuñez O (1968) An acetic-haematoxylin squash method for small chromosomes. *Caryologia* 21:115-119.
- Silkova OG, Shchapova AI and Kravtsova LA (2003) Mechanisms of meiotic restitution and their genetic regulation in wheat-rye polyhaploids. *Genetika* 39:1505-1515.
- Soler C, García P and Jouve N (1990) Meiotic expression of modified chromosome constitution and structure in 6x triticales. *Heredity* 65:21-28.
- Soltis PS and Soltis DE (2000) The role of genetic and genomic attributes in the success of polyploids. *Proc Natl Acad Sci USA* 97:7051-7057.

Associate Editor: Marcelo Guerra

License information: This is an open-access article distributed under the terms of the Creative Commons Attribution License, which permits unrestricted use, distribution, and reproduction in any medium, provided the original work is properly cited.