



Corrigendum: Anlotinib Combined With Chemoradiotherapy Exhibits Significant Therapeutic Efficacy in Esophageal Squamous Cell Carcinoma

OPEN ACCESS

Edited and reviewed by:

Massimo Brogginì,
Mario Negri Pharmacological
Research Institute (IRCCS), Italy

*Correspondence:

Jianbin Li
lijianbin@msn.com
Zhenxiang Li
lizx0108@163.com

Specialty section:

This article was submitted to
Cancer Molecular Targets and
Therapeutics,
a section of the journal
Frontiers in Oncology

Received: 15 July 2020

Accepted: 10 September 2020

Published: 20 November 2020

Citation:

Shi J, Zhang Y, Wang J, Li J and Li Z
(2020) Corrigendum: Anlotinib
Combined With Chemoradiotherapy
Exhibits Significant Therapeutic
Efficacy in Esophageal Squamous Cell
Carcinoma. *Front. Oncol.* 10:583499.
doi: 10.3389/fonc.2020.583499

Jingzhen Shi^{1,2,3}, Yingjie Zhang^{2,3}, Jinzhi Wang^{2,3}, Jianbin Li^{2,3*} and Zhenxiang Li^{3*}

¹ School of Medicine, Shandong University, Jinan, China, ² Shandong Cancer Hospital Affiliated to Shandong University, Jinan, China, ³ Department of Radiation Oncology, Shandong Cancer Hospital and Institute, Shandong First Medical University and Shandong Academy of Medical Sciences, Jinan, China

Keywords: patient-derived xenograft, esophageal squamous cell carcinoma, anlotinib, chemoradiotherapy, anti-angiogenesis

A Corrigendum on

Anlotinib Combined With Chemoradiotherapy Exhibits Significant Therapeutic Efficacy in Esophageal Squamous Cell Carcinoma

by Shi, J., Zhang, Y., Wang, J., Li, J. and Li, Z. (2020). *Front. Oncol.* 10:995. doi: 10.3389/fonc.2020.00995

In the original article, there was a mistake in **Figure 1** and **Table 2** as published. Duplicated panels were contained in **Figure 1** due to author error. The authors provided a modified **Figure 1** during the review process. The data of the pre-experiment were misplaced in **Table 2** and submitted after the proofs due to author error. The corrected **Figure 1** and **Table 2** appear below.

The authors apologize for this error and state that this does not change the scientific conclusions of the article in any way. The original article has been updated.

Copyright © 2020 Shi, Zhang, Wang, Li and Li. This is an open-access article distributed under the terms of the Creative Commons Attribution License (CC BY). The use, distribution or reproduction in other forums is permitted, provided the original author(s) and the copyright owner(s) are credited and that the original publication in this journal is cited, in accordance with accepted academic practice. No use, distribution or reproduction is permitted which does not comply with these terms.

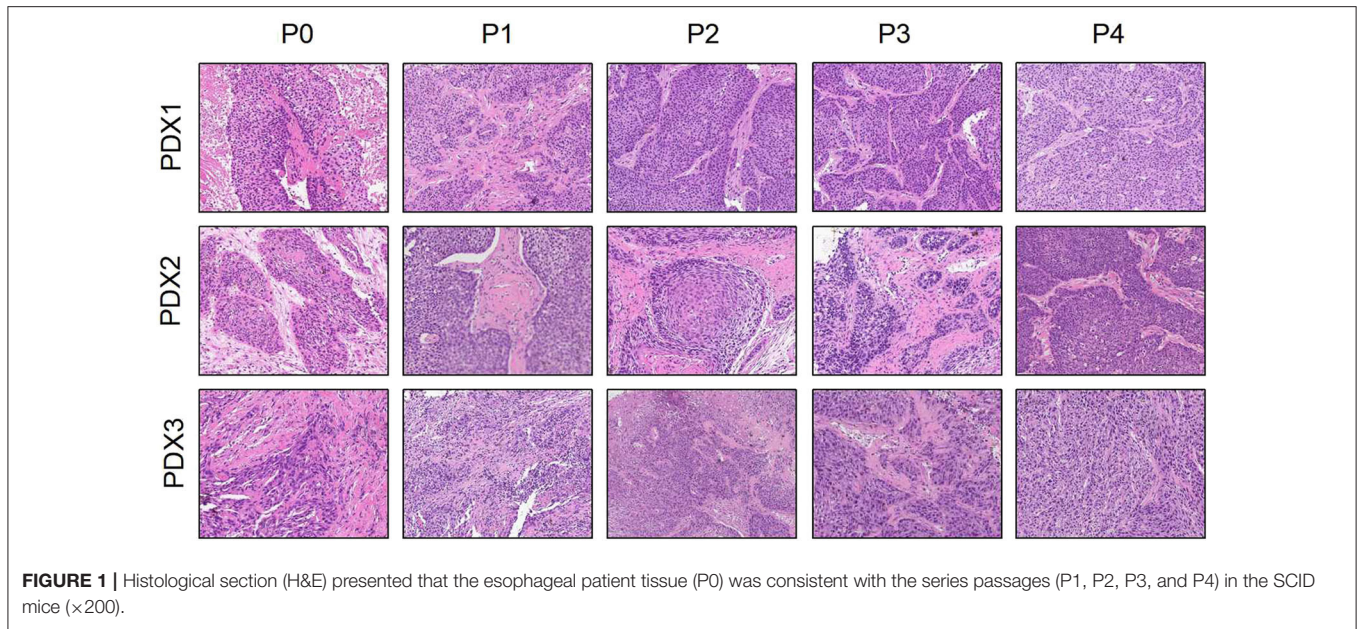


TABLE 2 | The detailed data of tumor volume and body weight.

No.	Tumor volume (mm ³)	Control group	RT	RT+DDP	RT+Anlotinib	RT+DDP+Anlotinib
PDX1	Initial	266.64 ± 37.05	243.4 ± 31.38	252.61 ± 60.13	260.90 ± 43.67	267.24 ± 51.13
	Final	343.51 ± 29.22	188.54 ± 40.04	150.31 ± 15.87	144.29 ± 15.05	121.02 ± 25.72
	Changing	77.06 ± 32.90	-54.95 ± 39.63	-102.31 ± 46.44	-116.61 ± 45.17	-146.23 ± 48.59
PDX2	Initial	187.52 ± 62.04	171.5 ± 31.30	185.45 ± 44.30	178.06 ± 40.02	181.31 ± 15.67
	Final	246.07 ± 109.69	116.3 ± 25.17	133.11 ± 53.32	119.17 ± 30.60	71.79 ± 5.88
	Changing	58.55 ± 64.42	-55.11 ± 22.68	-52.34 ± 55.52	-58.89 ± 38.21	-109.52 ± 18.05
PDX3	Initial	267.39 ± 28.18	265.4 ± 57.22	267.33 ± 53.02	256.01 ± 30.76	262.82 ± 29.66
	Final	648.68 ± 222.59	130.7 ± 57.33	161.87 ± 45.37	124.46 ± 38.87	70.89 ± 15.46
	Changing	381.33 ± 251.804	-134 ± 17.26	-105.46 ± 13.90	-131.54 ± 35.45	-191.93 ± 42.70

No.	Body weight (g)	Control group	RT	RT+DDP	RT+Anlotinib	RT+DDP+Anlotinib
PDX1	Initial	25.92 ± 22.15	24.85 ± 2.06	26.3 ± 41.20	24.7 ± 81.34	24.29 ± 1.57
	Final	25.99 ± 0.50	24.77 ± 2.30	25.9 ± 62.02	23.9 ± 12.47	23.45 ± 2.27
	Changing	0.06 ± 2.53	-0.08 ± 0.73	-0.88 ± 1.84	-0.87 ± 2.56	-0.83 ± 1.39
PDX2	Initial	22.68 ± 1.79	22.25 ± 0.84	22.66 ± 1.08	22.32 ± 1.48	22.71 ± 2.71
	Final	24.07 ± 0.77	23.35 ± 1.82	23.03 ± 1.01	22.05 ± 1.87	23.29 ± 1.47
	Changing	1.60 ± 1.23	1.10 ± 1.21	0.37 ± 0.84	-0.27 ± 1.17	0.57 ± 1.46
PDX3	initial	22.00 ± 2.54	21.23 ± 2.77	20.86 ± 2.92	21.99 ± 2.70	22.05 ± 2.58
	Final	24.21 ± 1.31	22.10 ± 1.30	22.86 ± 0.97	22.84 ± 1.07	22.69 ± 0.95
	Changing	2.21 ± 2.33	1.16 ± 1.72	2.00 ± 3.17	0.85 ± 3.15	0.64 ± 3.11

RT, radiation therapy; DDP, cisplatin.