

Research Paper

Predictive value of preoperative lymphocyte-to-monocyte ratio on survival outcomes in bladder cancer patients after radical cystectomy

Hai Bi^{1*}, Ye Yan^{1*}, Dong Wang^{2*}, Zijian Qin¹, Guoliang Wang¹, Lulin Ma¹, Yi Huang¹✉ and Jian Lu¹✉

1. Department of Urology, Peking University Third Hospital, 49 North Garden Road, Haidian District, Beijing 100191, PR China.
2. Department of Urology, National Cancer Center/National Clinical Research Center for Cancer/Cancer Hospital, Chinese Academy of Medical Sciences and Peking Union Medical College, Beijing 100021, PR China.

*These authors contributed equally to this work.

✉ Corresponding authors: Jian Lu, E-mail: lujian@bjmu.edu.cn, Tel.: +86 15611908443; Yi Huang, E-mail: pku_huang@163.com, Tel.: +86 15611908283.

© The author(s). This is an open access article distributed under the terms of the Creative Commons Attribution License (<https://creativecommons.org/licenses/by/4.0/>). See <http://ivyspring.com/terms> for full terms and conditions.

Received: 2020.09.12; Accepted: 2020.10.25; Published: 2021.01.01

Abstract

Purpose: To determine the prognostic significance of the pre-operative lymphocyte-to-monocyte (LMR) in patients with bladder cancer (BCa) who underwent radical cystectomy (RC), and to assess its prognostic benefit compared to models relying solely on clinicopathological factors.

Materials and Methods: A retrospective analysis of the 342 BCa patients undergoing RC at our institution from 2004 to 2017 was conducted to assess LMR prognostic significance. Overall survival (OS) and cancer-specific survival (CSS) were assessed using the Kaplan-Meier method. Cox regression models identified risk factors for survival outcomes. Two new models were developed based on basal models to predict OS and CSS at 1, 3, and 5 years after RC. The accuracy of the new models was evaluated using receiver operating characteristic curves as well as the concordance index. We also conducted decision curve analysis (DCA) to assess their net benefit.

Results: An association between excellent long-term patient survival outcomes and higher LMR levels was observed. The median OS and CSS for higher LMR level in patients was 98.8 months and >120 months, respectively. Cox regression multivariate analysis showed that pre-operative LMR, as a continuous variable, was an independent survival outcome predictor ($p < 0.001$). The utilization of LMR in the standard model resulted in significant discriminatory improvement in OS (5.6%, $p < 0.001$) and CSS (4.9%, $p = 0.001$) prediction. Moreover, as shown in DCA, utilization of the new model, including LMR, resulted in a net benefit compared to base models for predicting OS and CSS at 1, 3, and 5 years.

Conclusions: An independent association was observed between higher pre-operative LMR in BCa patients undergoing RC and significantly better OS and CSS. In addition, a significant improvement in predictive accuracy was observed with LMR inclusion in multiparametric prediction tools. Therefore, LMR may be utilized in pre-operative patient risk stratification to assist in patient counseling and clinical decision making.

Key words: Bladder cancer, radical cystectomy, lymphocyte-to-monocyte ratio, survival outcomes, predictive accuracy

Introduction

Bladder cancer (BCa) is the second most common genitourinary tract malignancy worldwide, with approximately 80,470 new cases and 17,670 cancer-related deaths reported in 2019 [1]. Radical cystectomy (RC) remains the standard therapeutic approach for non-metastatic muscle-invasive BCa as well as high-risk non-muscle-invasive BCa [2],

whereas the 5-year mortality rates of patients with BCa after RC are as high as 38–46% [3–4]. Furthermore, despite multimodal treatment approaches, survival outcomes after RC have not changed in the past several decades [5]. Thus, improvement in the accuracy of pre-operative risk stratification is warranted.

Risk assessment and estimating survival after RC are essential for patient counseling and the design of treatment regimens. The American Joint Committee on Cancer (AJCC) tumor-node-metastasis (TNM) staging system is the most commonly employed prediction tool [6]. Recently, several models for BCa patient assessment have been created using clinicopathological features and are reportedly more accurate at prediction compared to the TNM staging system [7]. A classical study identified variables such as age, pathologic TNM staging system, pathologic tumor grade, presence of lymphovascular invasion (LVI) at RC, as well as administration of adjuvant therapy (chemotherapy or radiotherapy) to be predictive of survival outcomes after RC, which constitute Bladder Cancer Research Consortium (BCRC) models [8]. However, the majority of predictive variables are post-operative pathologic features, and the accuracy of BCa clinical staging remains relatively low [9]. Thus, novel prognostic markers are required to facilitate appropriate pre-operative patient counseling.

Systemic inflammatory responses are important prognostic elements for the development and progression of cancer [10]. They are particularly relevant in BCa, which is a highly immunogenic malignancy [11]. Several studies have identified the lymphocyte-to-monocyte ratio (LMR) as an independent prognostic factor for post-RC survival outcomes [12-17]. However, the contribution of LMR in improving the prognostic accuracy of established BCa outcome predictors remains unclear [17], which can be addressed by measurement of incremental predictive accuracy [18] and decision curve analysis (DCA) [19].

Thus, this study was designed to assess the prognostic significance of pre-operative LMR in BCa patients who underwent RC, and to evaluate its prognostic benefit compared to models that rely on clinicopathological factors alone.

Materials and Methods

Patient population

This study utilized the BCa database of the Department of Urology of Peking University Third Hospital (PUTH; Beijing, China), with approval from the Institutional Review Board for the Protection of Human Subjects. 377 consecutive BCa patients who underwent RC between 2004 and 2017 at PUTH were included in the study. For each patient, comprehensive clinical and pathologic information was reviewed and collected. Of the 377 patients, 35 were excluded for the following reasons: 12 due to pathologic cell type other than urothelial carcinoma, 4

due to distant metastasis disease at the time of RC, 8 due to post-operative 30-day death, and 11 due to conditions before RC that could affect blood cell lines (systemic inflammatory disease: $n = 7$, malignant lymphoma: $n = 2$, neoadjuvant chemotherapy: $n = 2$). This resulted in 342 BCa patients eligible for further analysis. All patients received laparoscopic RC. Extension of pelvic lymph node dissection (PLND) and urinary diversion type were based on the surgeon's discretion. Regarding urinary diversion, 170 cases underwent ureterocutaneostomy, 122 cases underwent ileal conduit, and 50 cases received orthotopic neobladder. A standard PLND was conducted in the majority of patients, except 12 cases in which extended PLND was performed.

Study variables

Study variables were extracted from the database and included age, gender, pathologic TNM staging system, pathologic tumor grade, presence of LVI, administration of adjuvant therapy (chemotherapy or radiotherapy), and LMR, according to the BCRC models [8]. RC pathologies were reviewed by staff pathologists with expertise in genitourinary pathology for tumor stage, tumor grade, and presence of LVI. BCa was staged based on the criteria listed in the AJCC staging manual, 7th edition. Tumor grade was determined using the 2004 World Health Organization grading system. LVI was described as the presence of tumor cells that were nested within an endothelium-lined space and in the absence of underlying muscular walls [20]. Routine complete blood counts were collected within 30 days of RC as part of the routine pre-operative clinical assessment. The LMR was calculated using the formula: the lymphocyte count ($10^9/L$) divided by the monocyte count ($10^9/L$). Clinical notes were reviewed to rule out any signs or symptoms of infection around the time of blood test. Patient survival outcome correlations were evaluated using LMR as a continuous variable, with an LMR cut-off point described as the median value 3.27.

Follow-up

Generally, the patient underwent clinical and radiological follow-up postoperatively following routine institutional protocol. The follow-up consisted of quarterly sessions for the first 2 years, semiannually for the next 2 years, and then annual follow-up thereafter. Study outcomes included cancer-specific survival (CSS) and overall survival (OS) relative to the time of treatment initiation.

Statistical analysis

Descriptive statistics were performed using medians and interquartile ranges (IQRs) for

continuously coded variables. For categorical variables, frequencies and proportions were utilized. The chi-square and independent samples Mann-Whitney U tests were employed to assess the statistical significance of differences among proportions and means. CSS and OS were calculated using the Kaplan-Meier approach. Survival between patients with an LMR < 3.27 and \geq 3.27 were compared using the log-rank test. The Cox proportional-hazards model was employed to evaluate the correlation between LMR and survival outcomes and by controlling for clinicopathological variables. In particular, the TNM models consisted of pathologic T and N stages, whereas the BCRC models comprised age, pathologic T and N stages, tumor grade, LVI presence, and adjuvant therapy. Based on the BCRC models, we generated two new prognostic models that included LMR for CSS and OS. To test the discriminatory ability of the models, we employed Harrell's concordance (C) index [21]. Approximately 1,000 bootstrap resamples were employed for internal validation, and calibration plots were constructed to assess the new models' performance [22]. The predictive accuracy of three models at 1, 3, and 5 years was calculated using time-dependent receiver operating characteristic curve (ROC)-derived area under the curve (AUC) estimates [23]. The predictive abilities of the three models were compared using Kang's method [24]. Finally, to determine the net increase in the proportion of cases that were identified by the new models, the DCA was calculated at 1, 3, and 5 years [19]. All statistical analyses were performed using R (the R Foundation for Statistical Computing, Vienna, Austria, ver. 3.6.1). Differences were deemed statistically significant at $p < 0.05$.

Results

Clinicopathological variables of patients

Table 1 shows the characteristics of the 342 BCa patients included in this study. The median patient age was 68 years (IQR 59–75 years), and the median pre-operative LMR level was 3.27 (IQR: 2.42–4.25). Clinicopathological factors for patients with pre-operative LMR \geq 3.27 and < 3.27 are also provided in Table 1. Patients with an LMR < 3.27 were significantly older ($p=0.023$) and more likely at RC to have pathologic extravesical (pT3/4) tumor (45.6% vs. 25.1%; $p < 0.001$) as well as lymph node tumor involvement (21.6% vs. 9.9%; $p=0.005$).

OS and CSS in the cohort

The median follow-up from time of RC was 23.8 months (mean 32.9, range 0.3–167.4). Overall, 183 patients (53.5%) died of any cause, of which 139 deaths (76.0%) were due to BCa. The median OS time

was 37.0 months (Fig. 1A), whereas the median CSS time was 65.9 months (Fig. 1B). Figure 1 shows the stratified Kaplan-Meier estimators as well as the significantly different OS (Fig. 1C) and CSS (Fig. 1D) rates based on an LMR \geq 3.27 and < 3.27 (both log-rank $p < 0.001$).

Table 1. Perioperative characteristics of 342 BCa patients treated with RC between 2004 and 2017

Variables	Overall (n=342)	LMR<3.27 (n=171)	LMR \geq 3.27 (n=171)	p
Age (years), Median (IQR)	68 (59-75)	70 (61-76)	66 (58-73)	0.023
Gender, n (%)				0.057
Male	286 (83.6%)	150 (87.7%)	136 (79.5%)	
Female	56 (16.4%)	21 (12.3%)	35 (20.5%)	
LMR, Median (IQR)	3.27 (2.42-4.25)	NA	NA	NA
pT, n (%)				<0.001
\leq T2	221 (64.6%)	93 (54.4%)	128 (74.9%)	
T3	71 (20.8%)	45 (26.3%)	26 (15.2%)	
T4	50 (14.6%)	33 (19.3%)	17 (9.9%)	
pN, n (%)				0.005
Negative	288 (84.2%)	134 (78.4%)	154 (90.1%)	
Positive	54 (15.8%)	37 (21.6%)	17 (9.9%)	
Pathological Grade, n (%)				0.226
LG	18 (5.3%)	6 (3.5%)	12 (7.0%)	
HG	324 (94.7%)	165 (96.5%)	159 (93.0%)	
LVI, n (%)				0.089
Absent	222 (64.9%)	103 (60.2%)	119 (69.6%)	
Present	120 (35.1%)	68 (39.8%)	52 (30.4%)	
Adjuvant Therapy*, n (%)				1.000
No	295 (86.3%)	147 (86.0%)	148 (86.5%)	
Yes	47 (13.7%)	24 (14.0%)	23 (13.5%)	

Abbreviation: BCa: bladder cancer; HG: high grade; IQR: interquartile ranges; LG: low grade; LMR: lymphocyte-to-monocyte ratio; LVI: lymphovascular invasion; NA: not applicable; pN: pathologic node stage; pT: pathologic tumor stage; RC: radical cystectomy.

* Adjuvant radiotherapy and/or adjuvant chemotherapy.

Independent prognostic factors for OS

We assessed the association between pre-operative LMR and OS outcomes using multivariate Cox regression analysis by controlling for other clinicopathological characteristics (Table 2). We observed that when LMR was evaluated as a continuous variable, it was independently correlated with a significantly better OS (hazards ratio [HR]: 0.549; $p < 0.001$), i.e., for every one-unit increase in LMR, there was a 45.1% reduction in the risk of all-cause death. Furthermore, multivariate analysis indicated that except for LMR, a significant association of patient age, pathologic tumor stage, and lymph node status with OS was observed (Table 2).

Prognostic new model for OS

According to the multivariate analysis, we generated a new prognostic model that included LMR for OS, which showed a C-index of 0.771 (95% confidence interval [CI]: 0.736–0.806), whereas the C-indices of the TNM model and BCRC model were 0.674 (95% CI: 0.636–0.712) and 0.715 (95% CI:

0.676-0.754), respectively (both $p < 0.001$). The calibration plot for OS probability revealed optimal agreement between new model's prediction and actual observation at all indicated time points (Fig. 2).

Comparison of OS predictive accuracy in new model and conventional predictive models

Figure 3A shows that using time-dependent ROC, the AUCs of the new model were 0.800, 0.834 and 0.849 at 1, 3, and 5 years after RC, whereas those of the BCRC model were 0.768 ($p = 0.010$), 0.774 ($p < 0.001$), and 0.745 ($p < 0.001$), and of the TNM model were 0.718 ($p < 0.001$), 0.725 ($p < 0.001$), and 0.704 ($p < 0.001$) at 1, 3, and 5 years, respectively. These differences in AUC were determined to be statistically significant. Similarly, compared to the TNM model and BCRC model, DCA revealed that the new model had a net clinical benefit across a specific range of clinically relevant OS threshold probabilities at the indicated time points (Fig. 3B).

Independent prognostic factors for CSS

We evaluated the correlation between pre-

operative LMR and CSS outcomes by multivariate analysis, controlling for other clinicopathological characteristics (Table 3). We observed that LMR, when evaluated as a continuous variable, remained independently correlated with a significantly better CSS (HR: 0.569, $p < 0.001$), i.e., for every one-unit LMR increase, there was a 43.1% reduction in the risk of cancer-specific death. Furthermore, multivariate analysis showed that the pathologic tumor stage and lymph node status were similarly significantly associated (Table 3).

Prognostic new model for CSS

We used multivariate regression coefficients to generate a new prognostic model for CSS, which showed a C-index of 0.804 (95% CI: 0.770–0.838), whereas the TNM model was 0.743 (95% CI: 0.704–0.782; $p < 0.001$) and the BCRC model was 0.755 (95% CI: 0.715–0.795; $p = 0.001$). The calibration plot for CSS probability revealed an optimal agreement between new model prediction and actual observation at 1, 3, and 5 years after RC (Fig. 4).

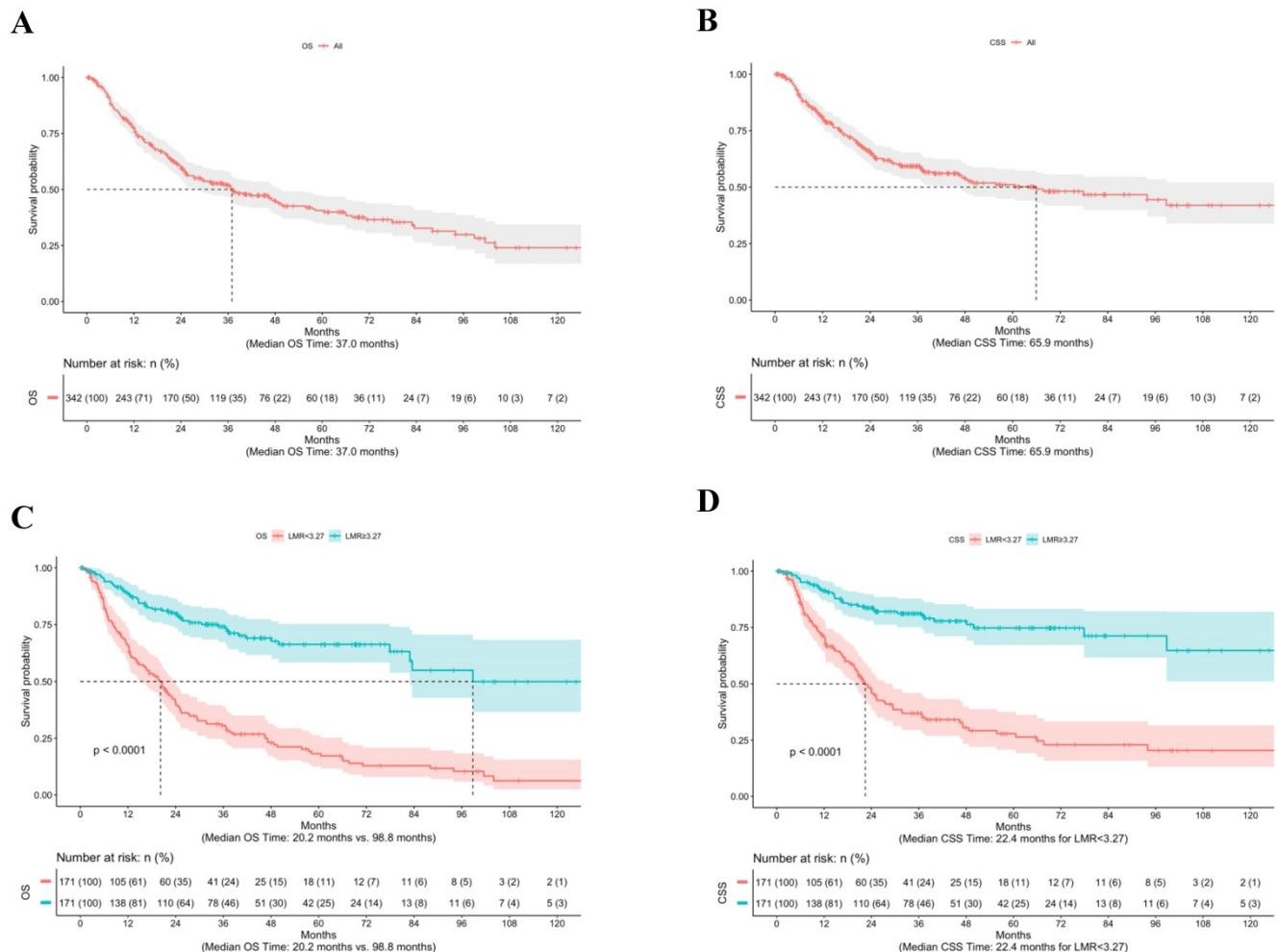


Figure 1. Kaplan-Meier estimates of OS (A) and CSS (B) for 342 BCa patients treated with RC, as well as OS (C) and CSS (D) according to LMR ≥ 3.27 and < 3.27 . **Abbreviation:** BCa: bladder cancer; CSS: cancer-specific survival; LMR: lymphocyte-to-monocyte ratio; OS: overall survival; RC: radical cystectomy.

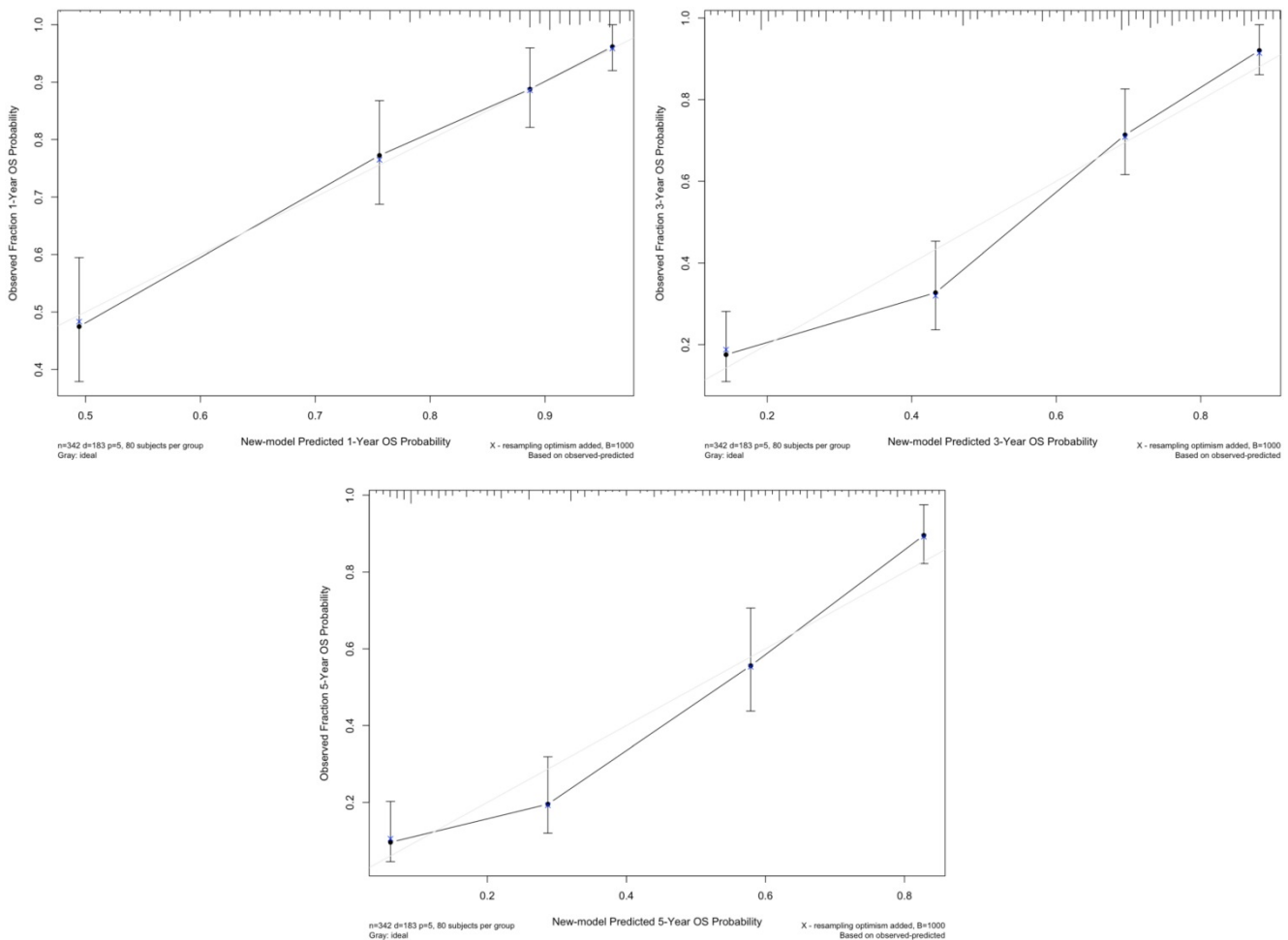


Figure 2. The calibration curve of new model for predicting patients' OS at 1 year, 3 years, and 5 years. **Abbreviation:** OS: overall survival.

Table 2. Univariate and multivariate Cox regression analysis for prediction of OS after RC for BCa

Variables	Univariate Analysis		C-index	Multivariate Analysis	
	HR (95% CI)	p		HR (95% CI)	p
Age (years)	1.033 (1.017-1.049)	<0.001	0.608	1.031 (1.015-1.046)	<0.001
Gender			0.497		
Male	Ref				
Female	0.899 (0.597-1.353)	0.608			
LMR	0.506 (0.438-0.584)	<0.001	0.707	0.549 (0.475-0.636)	<0.001
pT			0.654		
≤T2	Ref			Ref	
T3	2.786 (1.966-3.947)	<0.001		1.746 (1.207-2.525)	0.003
T4	4.178 (2.845-6.134)	<0.001		2.567 (1.704-3.866)	<0.001
pN			0.582		
Negative	Ref			Ref	
Positive	3.094 (2.187-4.375)	<0.001		1.801 (1.245-2.604)	0.002
Pathological Grade			0.522		
LG	Ref			Ref	
HG	3.564 (1.320-9.623)	0.012		1.315 (0.477-3.621)	0.596
LVI			0.592		
Absent	Ref			Ref	
Present	2.236 (1.656-3.018)	<0.001		1.177 (0.817-1.696)	0.382
Adjuvant Therapy*			0.589		
No	Ref				
Yes	1.055 (0.704-1.581)	0.795			

Abbreviation: BCa: bladder cancer; CI: confidence interval; HG: high grade; HR: Hazards ratio; LG: low grade; LMR: lymphocyte-to-monocyte ratio; LVI: lymphovascular invasion; OS: overall survival; pN: pathologic node stage; pT: pathologic tumor stage; RC: radical cystectomy; Ref: reference.

* Adjuvant radiotherapy and/or adjuvant chemotherapy.

Table 3. Univariate and multivariate Cox regression analysis for prediction of CSS after RC for BCa

Variables	Univariate Analysis		C-index	Multivariate Analysis	
	HR (95% CI)	p		HR (95% CI)	p
Gender			0.431	0.500	
Male	Ref				
Female	0.823 (0.507-1.336)				
LMR	0.496 (0.420-0.586)	<0.001	0.714	0.569 (0.481-0.674)	<0.001
pT			0.713		
≤T2	Ref			Ref	
T3	4.258 (2.849-6.362)	<0.001		2.638 (1.716-4.055)	<0.001
T4	6.920 (4.531-10.570)	<0.001		4.106 (2.608-6.465)	<0.001
pN			0.619		
Negative	Ref			Ref	
Positive	4.335 (3.007-6.251)	<0.001		1.957 (1.328-2.885)	0.001
Pathological Grade			0.531		
LG	Ref			Ref	
HG	10.340 (1.444-73.980)	0.020		3.576 (0.492-25.997)	0.208
LVI			0.631		
Absent	Ref			Ref	
Present	3.209 (2.283-4.510)	<0.001		1.378 (0.918-2.069)	0.122
Adjuvant Therapy			0.505		
No	Ref				
Yes	1.424 (0.939-2.158)	0.096			

Abbreviation: BCa: bladder cancer; CI: confidence interval; HG: high grade; HR: Hazards ratio; LG: low grade; LMR: lymphocyte-to-monocyte ratio; LVI: lymphovascular invasion; CSS: cancer-specific survival; pN: pathologic node stage; pT: pathologic tumor stage; RC: radical cystectomy; Ref: reference.

* Adjuvant radiotherapy and/or adjuvant chemotherapy.

Comparison of CSS predictive accuracy in new model and conventional predictive models

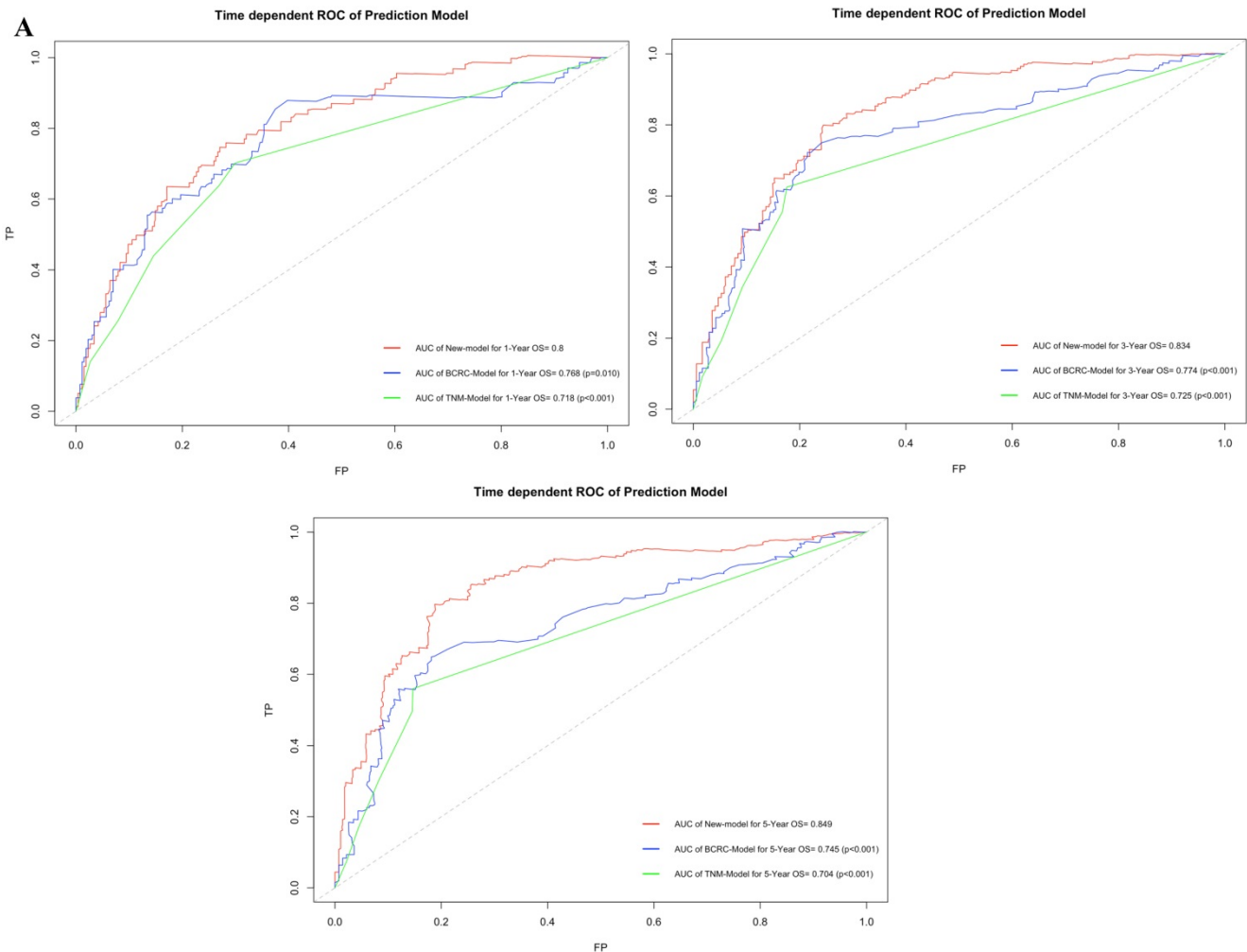
By comparing time-dependent ROCs, the AUCs of the new model were 0.837, 0.877 and 0.882 at 1, 3, and 5 years after RC, whereas those of the BCRC model were 0.785 ($p<0.001$), 0.782 ($p<0.001$), and 0.772 ($p<0.001$), and of the TNM model were 0.788 ($p<0.001$), 0.812 ($p<0.001$), and 0.802 ($p<0.001$) at 1, 3, and 5 years, respectively (Fig. 5A). These differences in AUC were all statistically significant. Similarly, compared to the TNM model and BCRC model, DCA revealed that the new model had a net clinical benefit across a specified range of clinically relevant CSS threshold probabilities at the indicated time points (Fig. 5B).

Discussion

This study retrospectively evaluated relevant data from 342 BCa patients who underwent RC to establish the relationship between pre-operative LMR and survival outcomes. A direct correlation between lower pre-operative LMR and advanced pathologic

tumor stage and lymph node status during RC was observed, as well as lower OS and CSS probability. Multivariate analysis revealed that pre-operative LMR was an independent OS and CSS prognostic factor after controlling for clinicopathological characteristics. Patients with greater LMR had better outcomes.

Lymphocyte and monocyte counts, which are components of the pre-operative blood test, are inexpensive and readily available in the clinic, and thus may be an optimal diagnostic and prognostic biomarker. Furthermore, LMR collected before all treatments (e.g., cystoscopy), without any influence, is preferred. LMR, at this point in time, merely represents the complex interactions among patient frailty, competing comorbidities, and locally advanced disease [25]. Although several researchers have indicated that high pre-treatment LMR predicts good cancer patient outcomes [26, 27], there is still no consensus on the ideal cut-off value. Thus, we evaluated LMR as a continuous variable in Cox regression analysis.



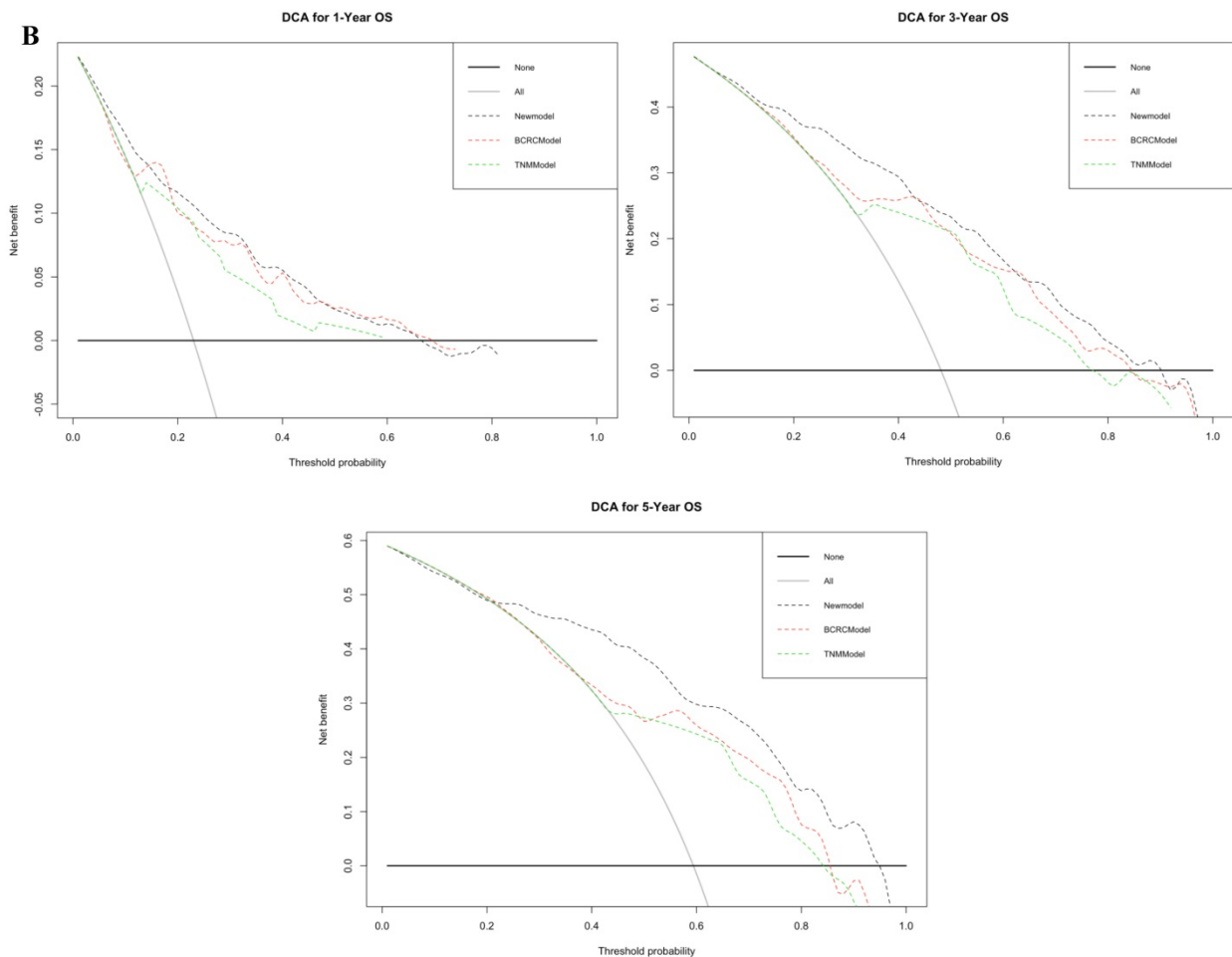


Figure 3. A. In time-dependent ROC, the AUC of new model for OS were all significantly superior to TNM-Model and BCRC-Model at one, three, and five years after RC in BCa patients. **B.** In DCA, the new model appeared to confer an advantage in predicting OS at one, three, and five years after RC. **Abbreviation:** AUC: area under curve; BCa: bladder cancer; BCRC: Bladder Cancer Research Consortium; DCA: decision curve analysis; OS: overall survival; RC: radical cystectomy; ROC: receiver operating characteristic curve.

The correlation between increased pre-operative LMR and patient survival outcomes is relatively complex and needs further investigation. BCa is frequently associated with chronic or recurrent urinary tract inflammation and systemic inflammation [11, 28]. In turn, via oncogenic changes, the tumor microenvironment activates the adaptive immune response that in turn induces cancer-promoting inflammation that promotes proliferation, progression, and metastasis [29]. Monocytes play a major role in proinflammatory cytokine production, which includes monocyte chemoattractant protein-1 that contributes to cancer initiation and promotion [30]. Additionally, high tumor-associated macrophage counts are correlated with poor survival and poor response to treatment [31]. However, lymphocytes are essential in antitumor reactions through the induction of tumor cell apoptosis [32] and by mediating antibody-dependent cell-mediated cytotoxicity [33]. In studies of BCa, the number and function of lymphocytes have both been found to be lower in invasive disease than in controls and superficial

carcinoma [31, 34]. Thus, a low LMR indicates a weaker, lymphocyte-mediated, antitumor immune response as well as more extensive inflammation and monocyte-mediated immune dysfunction [35].

To date, five studies have addressed the role of pre-treatment LMR in the survival of BCa patients who underwent RC. Temraz *et al.* [12] found that based on the cut-off value of 2.81, patients with lower level LMR had shorter OS (2.7 vs. 6.0 years, $p=0.020$) in a 68-BCa patient cohort. There was no multivariable analysis in this study. Zhang *et al.* [13] assessed LMR prognostic value in 124 BCa patients who were treated with RC. After adjusting for confounding factors, patients with an LMR ≥ 4 indicated $>30\%$ decreased mortality than the low LMR group ($p=0.003$). Rajwa *et al.* [16] evaluated LMR as a continuous factor in multivariate analysis, and found that lower LMR was associated with a shorter CSS (HR: 0.752; $p=0.0006$) and OS (HR: 0.785; $p=0.001$). In these two studies, no assessment of specific relevant confounders (e.g., LVI, adjuvant chemotherapy/radiotherapy, and/or concomitant systemic

inflammatory disease) was performed. Furthermore, Yoshida *et al.* [14, 15] reported that pre-operative LMR has higher predictive accuracy for OS compared to other inflammatory markers ($p=0.033$), and interestingly, perioperative LMR changes were significantly associated with OS (HR: 5.70; $p<0.001$) and CSS (HR: 4.53; $p<0.001$). However, there were no studies that assessed whether LMR enhances the prognostic accuracy of established BCa outcome predictors. The largest multicenter study to date, which was conducted by D'Andrea *et al.* [17], confirmed that LMR can independently predict CSS and OS, and the discriminatory power of the nomogram increases with LMR, although not significantly. Therefore, we utilized the C-index comparison, time-dependent ROC, and DCA to evaluate the prognostic benefit conferred by LMR.

Several findings in this study are noteworthy. First, we revealed excellent long-term survival outcomes among patients with higher LMR levels. The median survival time for higher LMR level patients was 98.8 months in OS and > 120 months in CSS. In Cox multivariate analysis, pre-operative LMR, as a continuous variable, is an independent survival outcome predictor, which avoids the need to determine the ideal cut-off value [35]. Similar to D'Andrea *et al.* [17], we added the LMR to the

standard models to validate the improvement of prognostic accuracy. The inclusion of LMR into our new model induced a significant improvement in OS and CSS prediction at all determined time points ($p<0.01$). In addition, as shown in the DCA, the use of LMR in new models confers a net benefit compared to the base models in predicting OS and CSS. Hence, LMR may be potentially added to the basal models for predicting OS and CSS in BCa patients post-RC and to guide in the design of adjuvant treatment schemes.

This study had many limitations that were mainly related to its retrospective and single-institutional nature, possibly resulting in selection bias and discrepancies from other geographical regions as well as institutions. Therefore, in the future, a large prospective cohort and multicenter study are needed to investigate the role of LMR in survival outcomes of BCa patients after RC. In this cohort, the calibration plot for the survival outcomes probability revealed an optimal agreement at various time points; however, we did not perform any external validation. The predictive accuracy of our new models in other cohorts should thus be assessed. In addition, the role of LMR in survival outcomes for BCa can be applied to patients with non-urothelial carcinoma of BCa should also be investigated.

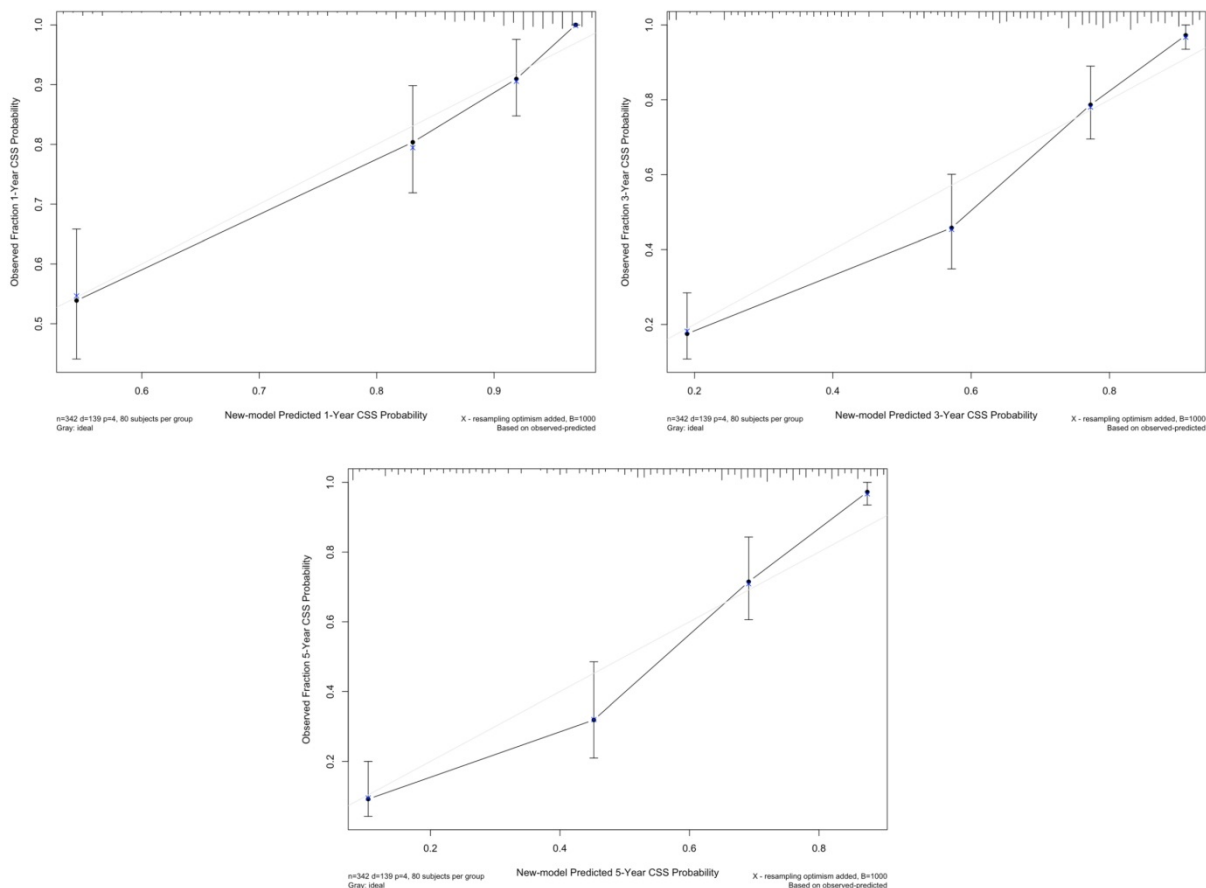


Figure 4. The calibration curve of new model for predicting patients' CSS at 1 year, 3 years, and 5 years. **Abbreviation:** CSS: cancer-specific survival.

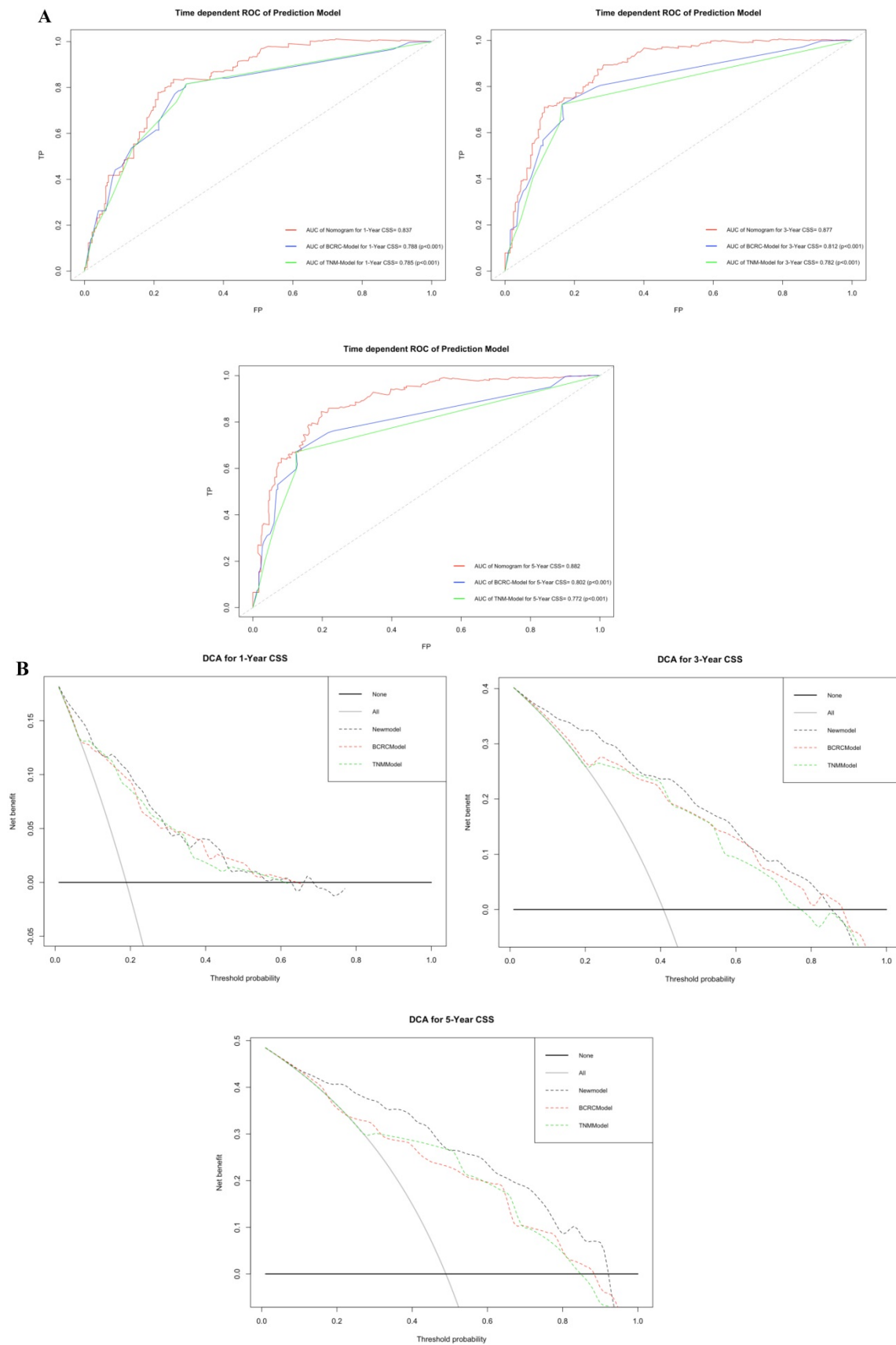


Figure 5. A. In time-dependent ROC, the AUC of new model for CSS were all significantly superior to TNM-Model and BCRC-Model at one, three, and five years after RC in BCa patients. **B.** In DCA, the new model appeared to confer an advantage in predicting CSS at one, three, and five years after RC. **Abbreviation:** AUC: area under curve; BCa: bladder cancer; BCRC: Bladder Cancer Research Consortium; DCA: decision curve analysis; CSS: cancer-specific survival; RC: radical cystectomy; ROC: receiver operating characteristic curve.

Conclusions

Lower pre-operative LMR was correlated with advanced tumor stage in BCa patients who underwent RC. After controlling for clinicopathological factors, increased LMR remained associated with a significantly better OS and CSS. Moreover, a significant increase in predictive accuracy was observed after LMR inclusion into multiparametric prediction tools. In addition, LMR is inexpensive and readily available in routine pre-operative testing. Therefore, it may be useful in pre-operative patient risk stratification to help patient counseling and clinical decision making.

Acknowledgements

Ethics approval and consent to participate

This study was approved by the Peking University Third Hospital Medical Science Research Ethics Committee (No. M2018183).

Availability of data and material

The anonymized data used and/or analyzed during the current study are available from the corresponding author on reasonable request.

Funding

This work was supported by Beijing Natural Science Foundation (No. L192037), Peking University Medicine Fund of Fostering Young Scholars' Scientific & Technological Innovation and the Fundamental Research Funds for the Central Universities (No. BMU2020PYB002), Key Clinical Projects of Peking University Third Hospital (No. BYSY2018012), and Clinical Cohort Construction Program of Peking University Third Hospital (No. BYSYDL2019013).

Authors' contributions

JL and YH planned and designed the study. HB and ZJQ collected the data. HB, DW and YY analyzed and interpreted the patient data. GLW and LLM provided comments on drafts of the manuscript. HB was a major contributor to the writing of the manuscript. All authors read and approved the final manuscript.

Competing Interests

The authors have declared that no competing interest exists.

References

1. Siegel RL, Miller KD, Jemal A. Cancer statistics, 2019. *CA Cancer J Clin.* 2019; 69: 7-34.
2. Leow JJ, Bedke J, Chamie K, Collins JW, Daneshmand S, Grivas P, et al. SIU-ICUD consultation on bladder cancer: treatment of muscle-invasive bladder cancer. *World J Urol.* 2019; 37: 61-83.

3. Albisinni S, Rassweiler J, Abbou CC, Cathelineau X, Chlosta P, Fossion L, et al. Long-term analysis of oncological outcomes after laparoscopic radical cystectomy in Europe: results from a multicentre study by the European Association of Urology (EAU) section of Uro-technology. *BJU Int.* 2015; 115: 937-45.
4. Patel MI, Bang A, Gillatt D, Smith DP. Contemporary radical cystectomy outcomes in patients with invasive bladder cancer: a population-based study. *BJU Int.* 2015; 116 Suppl 3: 18-25.
5. Zehnder P, Studer UE, Skinner EC, Thalmann GN, Miranda G, Roth B, et al. Unaltered oncological outcomes of radical cystectomy with extended lymphadenectomy over three decades. *BJU Int.* 2013; 112: E51-8.
6. Magers MJ, Lopez-Beltran A, Montironi R, Williamson SR, Kaimakliotis H, Cheng L. Staging of bladder cancer. *Histopathology.* 2019; 74: 112-34.
7. Kluth LA, Black PC, Bochner BH, Catto J, Lerner SP, Stenzl A, et al. Prognostic and prediction tools in bladder cancer: a comprehensive review of the literature. *Eur Urol.* 2015; 68: 238-53.
8. Shariat SF, Karakiewicz PJ, Palapattu GS, Amiel GE, Lotan Y, Rogers CG, et al. Nomograms provide improved accuracy for predicting survival after radical cystectomy. *Clin Cancer Res.* 2006; 12: 6663-76.
9. Shariat SF, Palapattu GS, Karakiewicz PJ, Rogers CG, Vazina A, Bastian PJ, et al. Discrepancy between clinical and pathologic stage: impact on prognosis after radical cystectomy. *Eur Urol.* 2007; 51: 137-49.
10. Rollins BJ. Inflammatory chemokines in cancer growth and progression. *Eur J Cancer.* 2006; 42: 760-7.
11. Gakis G. The role of inflammation in bladder cancer. *Adv Exp Med Biol.* 2014; 816: 183-96.
12. Temraz S, Mukherji D, Farhat ZA, Nasr R, Charafeddine M, Shahait M, et al. Preoperative lymphocyte-to-monocyte ratio predicts clinical outcome in patients undergoing radical cystectomy for transitional cell carcinoma of the bladder: a retrospective analysis. *BMC Urol.* 2014; 14: 76.
13. Zhang GM, Zhu Y, Luo L, Wan FN, Zhu YP, Sun LJ, et al. Preoperative lymphocyte-monocyte and platelet-lymphocyte ratios as predictors of overall survival in patients with bladder cancer undergoing radical cystectomy. *Tumour Biol.* 2015; 36: 8537-43.
14. Yoshida T, Kinoshita H, Yoshida K, Yanishi M, Inui H, Komai Y, et al. A novel risk stratification model, involving preoperative lymphocyte-monocyte ratio and standard pathological factors, for overall survival in patients with bladder cancer undergoing radical cystectomy. *Jpn J Clin Oncol.* 2015; 45: 1162-7.
15. Yoshida T, Kinoshita H, Yoshida K, Mishima T, Yanishi M, Inui H, et al. Prognostic impact of perioperative lymphocyte-monocyte ratio in patients with bladder cancer undergoing radical cystectomy. *Tumour Biol.* 2016; 37: 10067-74.
16. Rajwa P, Życzkowski M, Paradysz A, Bujak K, Bryniarski P. Evaluation of the prognostic value of LMR, PLR, NLR, and dNLR in urothelial bladder cancer patients treated with radical cystectomy. *Eur Rev Med Pharmacol Sci.* 2018; 22: 3027-37.
17. D'Andrea D, Moschini M, Gust KM, Abufaraj M, Özsoy M, Mathieu R, et al. Lymphocyte-to-monocyte ratio and neutrophil-to-lymphocyte ratio as biomarkers for predicting lymph node metastasis and survival in patients treated with radical cystectomy. *J Surg Oncol.* 2017; 115: 455-61.
18. Kattan MW. Judging new markers by their ability to improve predictive accuracy. *J Natl Cancer Inst.* 2003; 95(9): 634-5.
19. Vickers AJ, Elkin EB. Decision curve analysis: a novel method for evaluating prediction models. *Med Decis Making.* 2006; 26: 565-74.
20. Shariat SF, Svatek RS, Tilki D, Skinner E, Karakiewicz PI, Capitanio U, et al. International validation of the prognostic value of lymphovascular invasion in patients treated with radical cystectomy. *BJU Int.* 2010; 105: 1402-12.
21. Harrell FE Jr, Lee KL, Mark DB. Multivariable prognostic models: issues in developing models, evaluating assumptions and adequacy, and measuring and reducing errors. *Stat Med.* 1996; 15: 361-87.
22. Steyerberg EW, Harrell FE Jr, Borsboom GJ, Eijkemans MJ, Vergouwe Y, Habbema JD. Internal validation of predictive models: efficiency of some procedures for logistic regression analysis. *J Clin Epidemiol.* 2001; 54: 774-81.
23. Heagerty PJ, Lumley T, Pepe MS. Time-dependent ROC curves for censored survival data and a diagnostic marker. *Biometrics.* 2000; 56: 337-44.
24. Kang L, Chen W, Petrick NA, Gallas BD. Comparing two correlated C indices with right-censored survival outcome: a one-shot nonparametric approach. *Stat Med.* 2015; 34: 685-703.
25. Viers BR, Boorjian SA, Frank I, Tarrell RF, Thapa P, Karnes RJ, et al. Pretreatment neutrophil-to-lymphocyte ratio is associated with advanced pathologic tumor stage and increased cancer-specific mortality among patients with urothelial carcinoma of the bladder undergoing radical cystectomy. *Eur Urol.* 2014; 66(6): 1157-64.
26. Hutterer GC, Sobolev N, Ehrlich GC, Gutsch T, Stojakovic T, Mannweiler S, et al. Pretreatment lymphocyte-monocyte ratio as a potential prognostic factor in a cohort of patients with upper tract urothelial carcinoma. *J Clin Pathol.* 2015; 68: 351-5.
27. Stotz M, Pichler M, Absenger G, Szkandera J, Armingier F, Schaberl-Moser R, et al. The preoperative lymphocyte to monocyte ratio predicts clinical outcome in patients with stage III colon cancer. *Br J Cancer.* 2014; 110: 435-40.
28. Hai B, Ya T, Chuan S, Jiarui L, Tingting L, Zhen C, et al. Urinary microbiota—a potential biomarker and therapeutic target for bladder cancer. *J Med Microbiol.* 2019; 68: 1471-8.
29. Grivennikov SI, Greten FR, Karin M. Immunity, inflammation, and cancer. *Cell.* 2010; 140: 883-99.

30. Pollard JW. Tumour-educated macrophages promote tumour progression and metastasis. *Nat Rev Cancer*. 2004; 4: 71-8.
31. Joseph M, Enting D. Immune responses in bladder cancer-role of immune cell populations, prognostic factors and therapeutic implications. *Front Oncol*. 2019; 9: 1270.
32. Mantovani A, Allavena P, Sica A, Balkwill F. Cancer-related inflammation. *Nature*. 2008; 454: 436-44.
33. Schneider AK, Chevalier MF, Derré L. The multifaceted immune regulation of bladder cancer. *Nat Rev Urol*. 2019; 16: 613-30.
34. Wang B, Wu S, Zeng H, Liu Z, Dong W, He W, et al. CD103+ tumor infiltrating lymphocytes predict a favorable prognosis in urothelial cell carcinoma of the bladder. *J Urol*. 2015; 194: 556-62.
35. Ma JY, Hu G, Liu Q. Prognostic significance of the lymphocyte-to-monocyte ratio in bladder cancer undergoing radical cystectomy: a meta-analysis of 5638 individuals. *Dis Markers*. 2019; 2019: 7593560.