



OPEN

Ultra-high spin thermopower and pure spin current in a single-molecule magnet

SUBJECT AREAS:

APPLIED PHYSICS

MOLECULAR ELECTRONICS

Received

29 October 2013

Accepted

30 January 2014

Published

19 February 2014

Correspondence and requests for materials should be addressed to K.-L.Y. (klyao@mail.hust.edu.cn)

Bo Luo², Juan Liu¹, Jing-Tao Lü², Jin-Hua Gao² & Kai-Lun Yao^{1,2}

¹Wuhan National High Magnetic Field Center, Huazhong University of Science and Technology, Wuhan 430074, People's Republic of China, ²School of Physics, Huazhong University of Science and Technology, Wuhan 430074, People's Republic of China.

Using the non-equilibrium Green's function (NEGF) formalism within the sequential regime, we studied ultra-high spin thermopower and pure spin current in single-molecule magnet (SMM), which is attached to nonmagnetic metal wires with spin bias and angle (θ) between the easy axis of SMM and the spin orientation in the electrodes. A pure spin current can be generated by tuning the gate voltage and temperature difference with finite spin bias and the arbitrary angle except of $\theta = \frac{1}{2}\pi, \frac{3}{2}\pi$. In the linear regime, large thermopower can be obtained by modifying V_g and the angles (θ). These results are useful in fabricating and advantaging SMM devices based on spin caloritronics.

Studies on nanoscale thermoelectric devices have attracted much attention during the past few years^{1–4}. It is well accepted that nanoscale materials may provide an opening for the thermoelectricity in meeting the challenge of being a sustainable energy source⁵. Huge deviation from the Wiedemann-Franz law^{6,7} in the nanostructure materials⁵ makes new opportunities for investigating novel thermoelectric devices with high efficiency^{8,9}. Specially, spin caloritronics (spin Seebeck effect) was observed by Uchida et al^{10,11}. They found that the spin-polarized currents (I_{\uparrow} and I_{\downarrow}) can be induced by a temperature gradient and flow in opposite directions. These wonderful discoveries strongly promote research on new energy of thermoelectricity^{12,13}.

A single-molecule magnet (SMM) is a typical nanoscale material. In experiments, controlling the molecular spin¹⁴ and measuring thermopowers of molecule^{15–20} have been realized by directly using a scanning tunneling microscope. The spin-dependent transport properties, such as tunneling magnetoresistance (TMR) and spin Seebeck effect, were investigated in the sequential, cotunneling, and Kondo regimes using Wilson's numerical renormalization group and quantum master equation^{21–25}. Many fantastic phenomena have been found in the experimental and theoretical studies, including negative differential conductance^{26,27}, Berry phase blockade²⁸, the magnetization of SMM controlled by spin-bias and thermal spin-transfer torque²⁹. A SMM in a single spin state is necessary for generating the pure spin current^{21,22,29} without the magnetic field or magnetic electrodes. Meanwhile, it implies that the system temperature is limited by the blocking temperature of SMM (T_B). When the symmetry of spin in the leads is broken, the angle (θ) between the easy axis of SMM and the spin orientation in the electrodes will influence the transport properties in the SMM devices. Specially, spin-bias^{30,31} and this angle (θ) are important and crucial on thermoelectric effect.

In this paper, we theoretically investigate the thermoelectric effects of a sandwich structure of NM/SMM/NM with spin-bias^{29,32,33} and angles (θ) between the easy axis of SMM and the spin orientation in the electrodes. We show that, in this system, pure spin currents are observed even though the system temperature is higher than the blocking temperature due to the spin symmetry broken by spin bias. In the linear regime, both thermopower and figure of merit are dependent on the angle and spin bias. It's worth noting that the angle plays a critical role on generating spin thermopowers. The figure of merit could tend to infinity by tuning the voltage gate at special angles, which implies that this system has an ultra-high thermoelectric efficiency.



Results

Effective hamiltonian. The general Hamiltonian is expressed as^{29,34} $H = H_{leads} + H_{SMM} + H_b$, in which

$$\begin{aligned}
 H_{leads} &= \sum_{\alpha \in L, R, \sigma' \in \{+, -\}, k} \xi_{\alpha, \sigma' k} c_{\alpha, \sigma' k}^\dagger c_{\alpha, \sigma' k} \\
 H_{SMM} &= (\epsilon_0 - eV_g) \sum_{\sigma \in \{\uparrow, \downarrow\}} n_\sigma + U n_\uparrow n_\downarrow - K_2 S_z^2 - J S \cdot S \\
 H_t &= \sum_{\alpha, k} t_\alpha \left[\left(\cos \frac{\theta_\alpha}{2} c_{\alpha, +, k}^\dagger - \sin \frac{\theta_\alpha}{2} c_{\alpha, -, k}^\dagger \right) d_\uparrow \right. \\
 &\quad \left. + \left(\sin \frac{\theta_\alpha}{2} c_{\alpha, +, k}^\dagger + \cos \frac{\theta_\alpha}{2} c_{\alpha, -, k}^\dagger \right) d_\downarrow \right] + H.C
 \end{aligned} \quad (1)$$

H_{leads} describes the free electrons in two leads, with $c_{\alpha, \sigma' k}^\dagger (c_{\alpha, \sigma' k})$ being the creation (annihilation) operator for a continuous state in the $\alpha \in L, R$ lead with the energy $\xi_{\alpha, \sigma' k}$ and spin index $\sigma' = +(-)$, which denotes spin-majority (spin-minority) electrons. In this paper, wideband approximation is adopted and the density of states of the leads does not depend on the energy of the two leads. The chemical potential of α lead is defined as $\mu_{\sigma'}^\alpha = \pm (eV_\alpha/2 + \delta_{\sigma'} eV_{S\alpha}/2)$ with $eV_{L(R)} = \pm \frac{\mu_+^{L(R)} + \mu_-^{L(R)}}{2}$ and $eV_{S(L)} = \pm \frac{\mu_+^{L(R)} - \mu_-^{L(R)}}{2}$, and $\delta_{\sigma'} = +1(-1)$ for $\sigma' = +(-)$. $V = V_L - V_R$ is the voltage and $V_s = V_{sL} - V_{sR}$ is the spin voltage. P_α denotes the polarization of α lead and is defined as $P_\alpha = (\rho_{\alpha+} - \rho_{\alpha-}) / (\rho_{\alpha+} + \rho_{\alpha-})$. H_{SMM} denotes the molecular degrees of freedom, in which $n_\sigma = d_\sigma^\dagger d_\sigma$ and $d_\sigma^\dagger (d_\sigma)$ is the creation (annihilation) operators for the LUMO. ϵ_0 is the single-electron energy of the LUMO level, which is tuned by a gate voltage V_g . U is the on-site Coulomb repulsion. J describes the Hund's rule coupling between the giant spin S of SMM and the electron spin in the LUMO, and parameter K_2 is the easy-axis anisotropy of SMM. H_t describes the tunneling between the LUMO of SMM and the electrodes, and θ_α denotes the angle between the spin orientation of lead- α and the easy-axis of the SMM (as z-axis).

In the following, we turn to numerical calculations with parameters: $S = 2, J = 0.1 \text{ meV}, K_2 = 0.04 \text{ meV}, U = 1.0 \text{ meV}$ and $\epsilon_0 = 0.2 \text{ meV}$. The tunneling parameters are set to $\Gamma = \Gamma_L = \Gamma_R = 0.001 \text{ meV}$. The properties of the leads are set to $P_R = P_L = 0$. Conventionally, I_c and I_s are defined as charge current and spin current respectively, and we set $e = k_B = \hbar = 1$ and the thermopower and current are scaled in the unit of $I_0 = \frac{1}{2} \Gamma$. We can find all of the thermopowers are symmetric about $\theta = \pi$ because of the spatial symmetry of the sandwich structure.

Transport properties. First, we consider that the left electrode is nonmagnetic with $V_s = 0.01 \text{ meV}$ and $V = 0 \text{ meV}$. The system temperature is lower than the anisotropy-induced energy barrier ($K_2 S^2 = 0.16 \text{ meV}$). Figure 1a and Figure 1b show I_c and I_s as function of θ for different values of V_g with $\Delta T = 0.0002 \text{ meV}$, respectively. In this case, we can find that I_s is almost ten times of I_c . The maximum or minimum value of I_c and I_s depends on the gate voltage V_g and θ , but the positions of these extremums only depend on the V_g . When $\theta = \pi/2, 3\pi/2$, I_s is exactly equal to zero due to the coefficient $A_{\sigma, \sigma'}^L = 1/2$, which leads $I_\uparrow \equiv I_\downarrow$. Moreover, we show I_c and I_s as a function of V_g with two types of ΔT at $\theta = 0$ in Figure 1e. One can find that I_c is extremely sensitive to the temperature difference. However, I_s only has a little change. Conventionally, the Fermi-Dirac distributions of spin-up and spin-down electron in the electrode are different due to finite V_s . The higher the temperature is, the less these differences are generated.

In Figure 1c and 1d, we show I_c and I_s as a function ΔT for different θ at $V_g = 0.1 \text{ meV}$ and $T = 0.02 \text{ meV}$, respectively. In this case, interesting phenomena can be observed. When $\theta = 0, \pi, 2\pi$, I_c first increases and then decreases with decreasing of ΔT , but it decreases monotonically when $\theta = \pi/2$. However, I_s changes monotonically with decreasing ΔT and equals to zero at $\theta = \pi/2, 3\pi/2$.

Thermoelectric coefficients. Next, we focus on the thermopower phenomena in the linear response regime and assume spin-bias only exists at the left electrode. Figure 2a and Figure 2b display charge-Seebeck and spin-Seebeck coefficient as a function of θ for different values of V_g respectively. At the point $V_g = 0.1 \text{ meV}$, S_c and S_s are zero due to the same weight and the opposite transmission direction of the currents and energy carried by electrons and holes. At the special points $\theta = 0, 2\pi$, the contributions of the spin-up and spin-down electrons are the same weight leading to $G_\uparrow = G_\downarrow$ and $S_s = 0$, no matter spin bias exists or not. S_c and S_s reach the maximum values for each V_g when $\theta = \pi$. In Figure 2c, we plot all transport coefficients as a function of θ with $V_g = -0.05$ at $T = 0.02$. One can observe that electron thermal conductivity (k_e) is zero at special θ , which may cause figure of merit $Z_c T$ or $Z_s T$ tend to be infinite. Furthermore, we plot the k_e as function of V_g and θ at $T = 0.02 \text{ meV}$ and find that zero k_e exists only under special conditions of V_g and θ in Figure 2d. It is interesting that one can have ultrahigh spin thermopower in a single molecular magnetism through manipulating the angle θ between the easy axis of SMM and the spin orientation of the electrodes, and also by tuning V_g .

Thermoelectric coefficients have been investigated through solving the non-equilibrium Green's function (NEGF) in detail. The general formulas are derived to calculate the currents which depend on the angle θ between the easy axis of SMM and the spin orientation in the electrodes and spin bias. The spin bias destroys the SU(2) symmetry of electron-spin in nonmagnetic electrodes, which leads the fact that the angle θ influences the redistributions of different spin currents. It is amazing that pure spin currents can be obtained by tuning V_g and ΔT with a finite spin bias and arbitrary θ except of $\theta = \frac{1}{2}\pi, \frac{3}{2}\pi$. In the linear regime, infinite figure of merit can be generated by tuning V_g at special angles θ with spin bias. Specially, when the angle θ is equal to zero or 2π , spin thermopowers vanish identically even though spin bias exists. These phenomenons may provide a new approach for the design of SMM devices based spin caloritronics.

Discussion

The details of the constituents of the currents at $\theta = 0$ are shown in Figure 1f. When V_g is equal to 0.1 meV , the lowest-energy states of the isolated SMM are four-fold degenerate: $|5/2 : \pm 5/2\rangle$ and $|0, 2 : \pm 2\rangle$, and the second-lowest-level state is a double degeneracy: $|1, 3/2 : \pm 3/2\rangle^-$. The energy level difference between the lowest and next-lowest levels is 0.0839 meV . The currents are mainly contributed by the transitions of $|3/2 : \pm 3/2\rangle^- \leftrightarrow |0, 2 : \pm 2\rangle$ and $|1, 5/2 : \pm 5/2\rangle \leftrightarrow |0, 2 : \pm 2\rangle$. According to Eq. (9), we can approximate $I_{|1, 5/2 : \pm 5/2\rangle \leftrightarrow |0, 2 : \pm 2\rangle} \propto \pm f\left(\frac{\pm V_{sL}/2}{T_L}\right)$ and $I_{|1, 3/2 : \pm 3/2\rangle^- \leftrightarrow |0, 2 : \pm 2\rangle} \propto f\left(\frac{0.0839 \pm V_{sL}/2}{T_L}\right) - f\left(\frac{0.0839}{T_R}\right)$. At the electron-hole symmetry point, $I_{|1, 5/2 : \pm 5/2\rangle \leftrightarrow |0, 2 : \pm 2\rangle}$ are only controlled by V_{sL} and temperature T_L .

However, $I_{|1, 3/2 : \pm 3/2\rangle^- \leftrightarrow |0, 2 : \pm 2\rangle}$ depend on the temperatures of the two leads, V_{sL} and the energy-difference between the lowest and the second-lowest state. From Figure 1f, one can find that I_s is mainly contributed by $I_{|1, 5/2 : \pm 5/2\rangle \leftrightarrow |0, 2 : \pm 2\rangle}$, but I_c is decided by all transitions. It is amazing that pure spin currents can be obtained at high temperatures. In Figure 1g, it is clear that I_c first increases and then decreases with the increasing of the average temperature T at $V_g =$

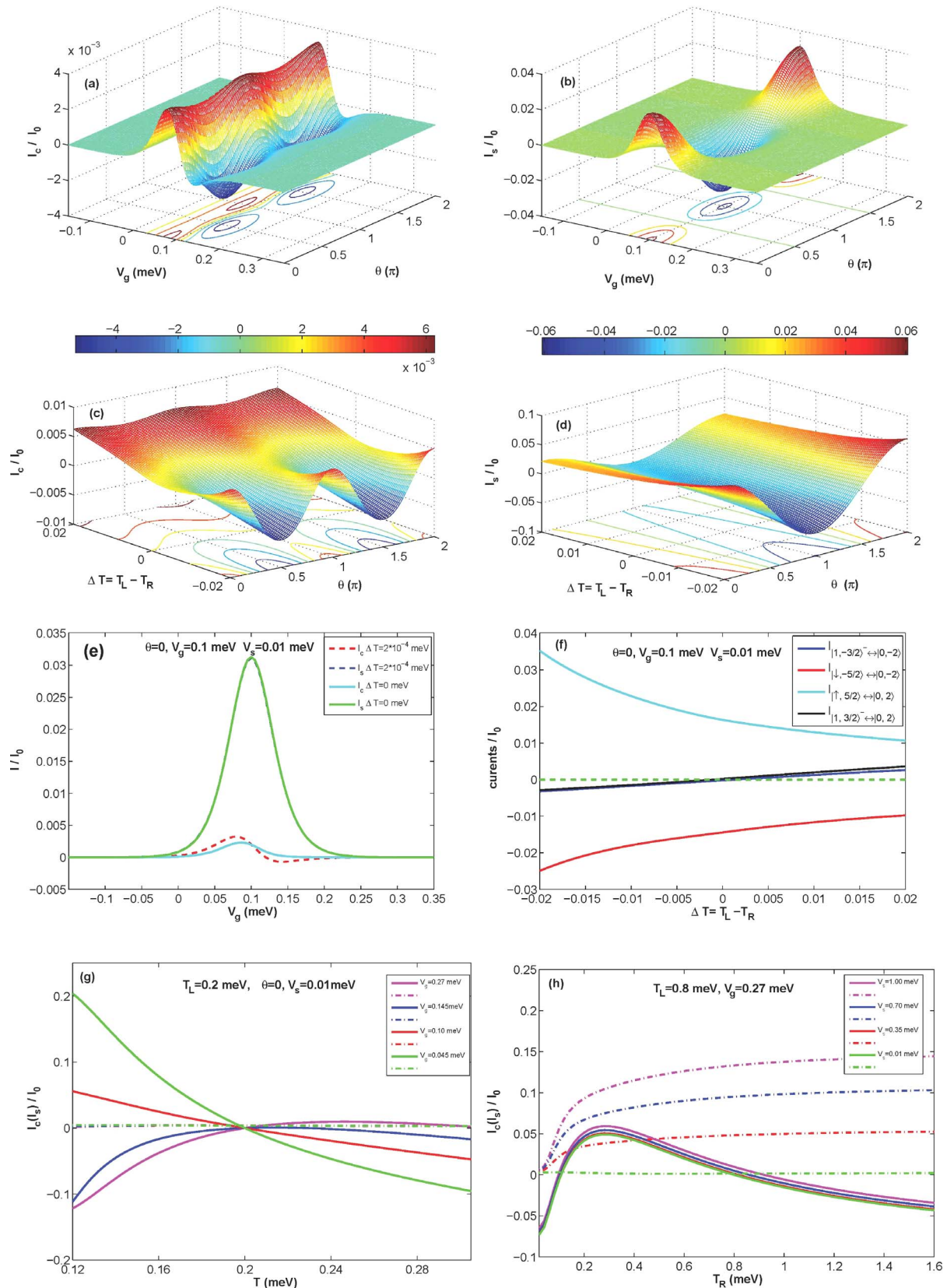


Figure 1 | I_c and I_s as a function of θ for different V_g and ΔT with parameters $S = 2$, $\epsilon_0 = 0.2$ meV, $J = 0.1$ meV, $K_2 = 0.04$ meV, $U = 1.0$ meV, $k_B = 1$, $P_L = P_R = 0$. In Fig (a) and (b), a tiny temperature difference is considered: $\Delta T = T_L - T_R = 0.0002$ meV and $T = 0.02$ meV. In the (c) and (d), V_g is set to 0.1 meV and the average temperature is fixed: $T = 0.02$ meV. (e) shows the temperature difference influences on the I_c and I_s with $\theta = 0$. (f) displays the details of the constituents of the I_c and I_s with $\theta = 0$. (g) displays I_c and I_s as a function of T for different V_g with $T_L = 0.2$ meV and $V_s = 0.01$ meV at $\theta = 0$. (h) shows I_c and I_s as a function of T_R for different V_s with $T_L = 0.8$ meV and $V_g = 0.27$ meV at $\theta = 0$. Solid lines denote charge currents and dash dot lines mark spin currents in (g) and (h).



0.27 meV. But I_S only has little change and is not equal to zero. Due to the spin splitting induced by spin bias, pure spin currents can be generated at arbitrary temperatures. In Figure 1h, the system temperature is five times as the anisotropy-induced energy barrier and pure spin currents can be obtained by increasing V_{sL} .

Interestingly, the numerical results show k_c can be equal to zero with changing V_g and θ in Figure 2d. It means that $Z_s T(Z_c T)$ may be infinite when $S_c(S_s)$ and $G_\sigma(\sigma = \uparrow\downarrow)$ are finite. The exact choices of V_g and θ are related to the details of the system's parameters. But it is necessary that S_s must be larger than S_c . It is well-known that electrons move from high temperature to low temperature, and it is not related to electronic spin. However, the spin-up and spin-down electrons under the spin bias can move in the opposite direction, and carry different energy according to the Eq.10. Due to the competition between the temperature difference (ΔT) and spin bias (V_{sL}), and the scattering between spin-up and spin-down electrons induced by the nonlinear spin exchange, it is possible that there are non-zero amount for thermopower and electrical conductance when thermal conductivity k_c is zero.

Methods

Non-equilibrium Hubbard Green function has been used to solve the thermoelectric transport in the sequential and linear response regime³⁵. The system Hamilton can be rewritten by the transition operator^{36–39}, i.e. $d_\sigma = X^{0\sigma} + \delta_\sigma X^{\sigma 2}$ with $\delta_\sigma = +1(-1)$ for $\sigma = \uparrow(\downarrow)$ ($\uparrow = \downarrow$), $s_+ = X^{\uparrow\downarrow}$, $s_- = X^{\downarrow\uparrow}$, and $s_z = \frac{1}{2}(X^{\uparrow\uparrow} - X^{\downarrow\downarrow})$. For large spin, the operator can be expressed as⁴⁰:

$$S^+ = \sum_{m=-S,S} C_m^+ Y^{m+1,m}, \quad S^- = \sum_{m=-S,S} C_m^- Y^{m-1,m}, \quad S^z = \sum_{m=-S,S} m Y^{m,m}. \quad (2)$$

where S is the spin quantum number, $Y^{m,n} = |Sm\rangle\langle S n|$ and $C^\pm = \sqrt{(S \pm m + 1)(S \mp 1)}$. Finally, the retarded Green Function is written as

$$G_\sigma^r(\omega) = \sum_m \ll X^{0\sigma} Y^{mm} | d_\sigma^+ \gg^r + \delta_\sigma \ll X^{\sigma 2} Y^{mm} | d_\sigma^+ \gg^r \quad (3)$$

By using the Dyson equation and the Keldysh forum, the retarded(advanced) and the lesser(greater) Green's function can be compactly expressed as respectively

$$G_\sigma^{r/a} = \left[\left(G_0^{r/a} \right)^{-1} - \Sigma_{leads,\sigma}^{r/a} \right]^{-1} \quad (4)$$

$$G_\sigma^< = G_\sigma^r \Sigma_{leads,\sigma}^< G_\sigma^a \quad (5)$$

Here, $\Sigma_{leads,\sigma}^{r/a/<}$ are the electron self-energy in the second-order approximation and the formulas for calculation are

$$\begin{aligned} \Sigma_{\alpha,\sigma}^< &= i\Gamma_\alpha \sum_{\sigma'=\pm} A_{\sigma,\sigma'}^z f_{\alpha,\sigma'} \\ \Sigma_{leads,\sigma}^{r/a} &= \mp i \sum_{\alpha=L,R} \frac{\Gamma_\alpha}{2} \left(A_{\sigma,+}^z + A_{\sigma,-}^z \right) \\ \Gamma_\alpha &= \sum_{\sigma'=\pm,k} \pi t_{\alpha}^2 \delta(\omega - \xi_{\alpha,\sigma',k}) \end{aligned} \quad (6)$$

where

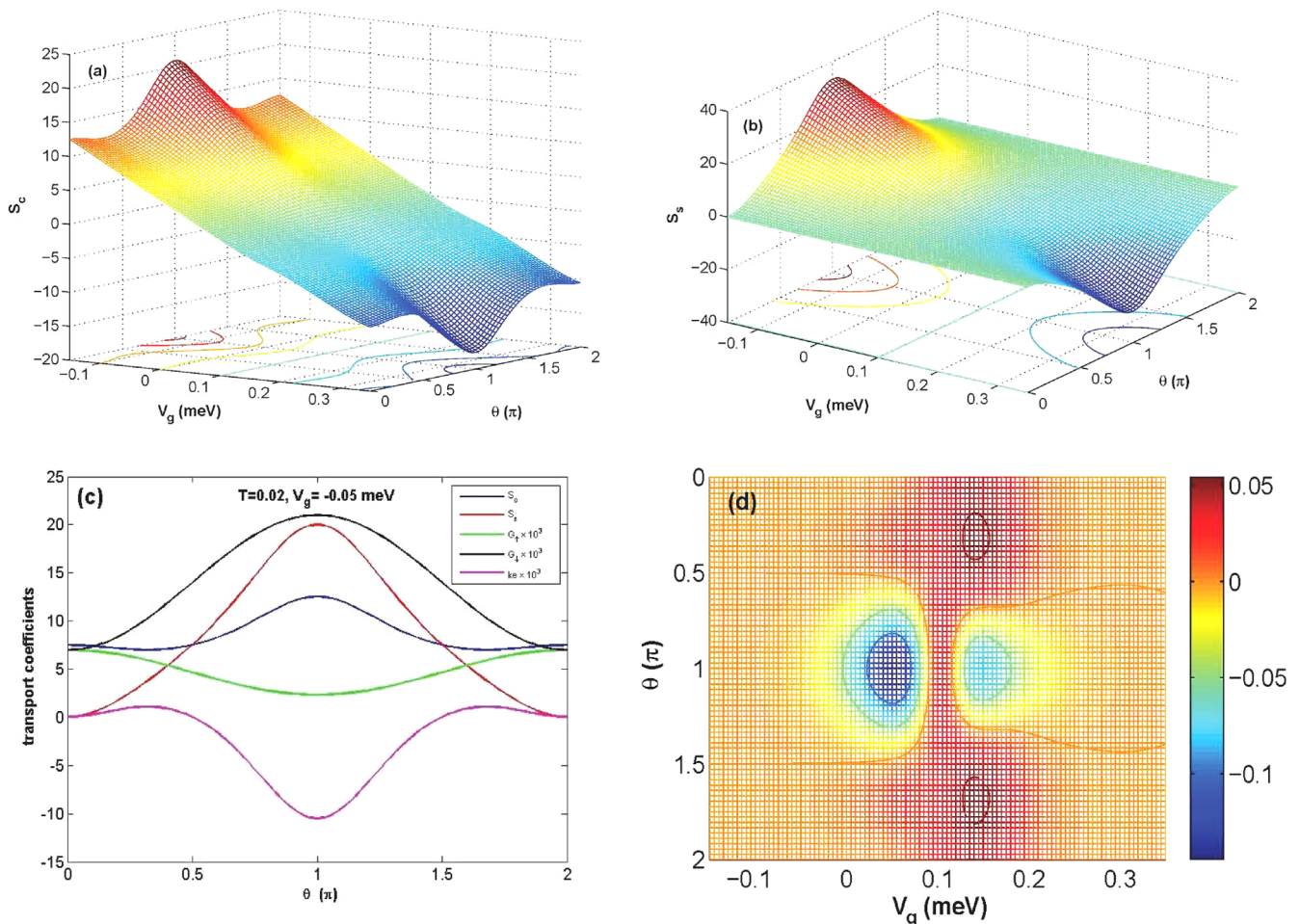


Figure 2 | Here, we consider spin-bias only exists at the left lead. (a) and (b) show the S_c and S_s as a function of θ for different V_g respectively. (c) displays the thermopowers as a function of θ with $V_g = -0.05$ meV at $T = 0.02$ meV. (d) shows conventional thermal conductance (k_c) as a function of V_g and θ at $T = 0.02$ meV. The other parameters are chosen as same as that in Figure 1.



$$f_{\alpha,\sigma'}(\omega) = \left[e^{(\hbar\omega - \mu_{\sigma'}^{\alpha})/k_B T_{\alpha}} + 1 \right]^{-1} \quad (7)$$

$$A_{\sigma,\sigma'}^{\alpha} = (1 + \delta_{\sigma,\sigma'} P_{\alpha}) \sin^2 \left(\delta_{\sigma,\sigma'} \frac{\pi}{2} - \frac{\theta_{\alpha}}{2} \right) \quad (8)$$

Here $\mu_{\sigma'}^{L(R)} = \pm (eV_{\alpha}/2 + \delta_{\sigma'} eV_{s\alpha}/2)$ is a chemical potential with $eV_{L(R)} = \pm \frac{\mu_{+}^{L(R)} + \mu_{-}^{L(R)}}{2}$ and $eV_{sL(R)} = \pm \frac{\mu_{+}^{L(R)} - \mu_{-}^{L(R)}}{2}$, and $\delta_{\sigma'} = +1(-1)$ for $\sigma' = +(-)$. P_{α} denotes the polarization of α lead and is defined as $P_{\alpha} = (\rho_{\alpha+} - \rho_{\alpha-}) / (\rho_{\alpha+} + \rho_{\alpha-})$. $f_{\alpha,\sigma'}$ is the Fermi-Dirac distributions of α lead. $\delta_{\sigma,\sigma'} = 1(0)$ for $\sigma = \uparrow(\downarrow)$ and $\sigma' = +(-)$ ($\sigma \neq \sigma'$). The voltage is defined as $V = V_L - V_R$ and the spin voltage is written as $V_s = V_{sL} - V_{sR}$. In the Hubbard operator representation, the eigenenergies of the unperturbed SMM can be obtained exactly, so the equation (5) is rigorous⁴¹. Following the Landauer-Buttiker formula, the expressions for the currents⁴² are

$$I_{\sigma}^L = \frac{e}{h} \sum_{\sigma'=\pm, -} \int d\omega T_{\sigma}(\omega) \left[\frac{A_{\sigma,\sigma'}^L f_{L,\sigma'}}{A_{\sigma,+}^L + A_{\sigma,-}^L} - \frac{A_{\sigma,\sigma'}^R f_{R,\sigma'}}{A_{\sigma,+}^R + A_{\sigma,-}^R} \right] \quad (9)$$

$$Q_{\sigma}^L = \frac{e}{h} \sum_{\sigma'=\pm, -} \int d\omega T_{\sigma}(\omega) (\omega - \mu_{\sigma'}^L) \left[\frac{A_{\sigma,\sigma'}^L f_{L,\sigma'}}{A_{\sigma,+}^L + A_{\sigma,-}^L} - \frac{A_{\sigma,\sigma'}^R f_{R,\sigma'}}{A_{\sigma,+}^R + A_{\sigma,-}^R} \right] \quad (10)$$

where $T_{\sigma}(\omega)$ denotes the transmission coefficient of spin- σ electrons

$$T_{\sigma}(\omega) = \Gamma_{\sigma}^L G_{\sigma}^L \Gamma_{\sigma}^R G_{\sigma}^R \quad (11)$$

with

$$\Gamma_{\sigma}^{\alpha} = \Gamma_{\alpha} (1 + \delta_{\sigma} P_{\alpha} \cos(\theta_{\alpha})). \quad (12)$$

We can directly obtain the same formula for I_{σ}^R with $L \leftrightarrow R$, depicting electric current $I_{\sigma} = (I_{\sigma}^L - I_{\sigma}^R)/2$ and heat current $Q_{\sigma} = (Q_{\sigma}^L - Q_{\sigma}^R)/2$. $I_c = I_{\uparrow} + I_{\downarrow}$ and $I_s = I_{\uparrow} - I_{\downarrow}$ denote the charge current and spin current respectively. It is noticeable that our formulas (Eq. 9 and 10) are different from the conventional expressions^{41,42}, in which θ and Fermi-Dirac function are coupled to each other.

In linear response regime, the thermoelectric coefficients are expressed as

$$\begin{aligned} G_{\sigma} &= \frac{I_{\sigma}}{V + \delta_{\sigma} 0.5 V_s} \Big|_{\Delta T=0} \\ S_c &= - \frac{V}{\Delta T} \Big|_{I_c=0, I_s=0} = \frac{1}{2\Delta T} \left(\frac{\Delta I_{\uparrow}}{G_{\uparrow}} + \frac{\Delta I_{\downarrow}}{G_{\downarrow}} \right) \\ S_s &= - \frac{V_s}{\Delta T} \Big|_{I_c=0, I_s=0} = \frac{1}{\Delta T} \left(\frac{\Delta I_{\uparrow}}{G_{\uparrow}} - \frac{\Delta I_{\downarrow}}{G_{\downarrow}} \right) \\ k_c &= \sum_{\sigma=\uparrow, \downarrow} \frac{Q_{\sigma}^L - Q_{\sigma}^R}{2} \Big|_{I_c=0, I_s=0} \end{aligned} \quad (13)$$

Here, S_c and S_s denote the charge Seebeck and spin Seebeck respectively. G_{σ} is σ -electric current conductance. k_c is the conventional thermal conductance. ΔI_{σ} is the σ -electric current induced by a temperature difference at zero voltage bias and zero spin bias. $\Delta T = T_L - T_R$ is defined as temperature difference and the average temperature is expressed as $T = (T_L + T_R)/2$. Finally, The spin figure of merit $Z_s T = (G_{\uparrow} - G_{\downarrow}) S_s^2 T / \kappa$ and charge figure of merit $Z_c T = (G_{\uparrow} + G_{\downarrow}) S_c^2 T / \kappa$ can be calculated. $\kappa = k_c + k_{ph}$ is the thermal conductance with contributions from both electrons (k_c) and phonons (k_{ph})⁴³⁻⁴⁵. In our model, the phonon transport is not considered due to large mismatch of vibrational spectra between the SMM and leads.

- Dubi, Y. & Di Ventra, M. Colloquium: Heat flow and thermoelectricity in atomic and molecular junctions. *Rev. Mod. Phys.* **83**, 131–155 (2011).
- Snyder, G. J. & Toberer, E. S. Complex thermoelectric materials. *Nat Mater* **7**, 105–114, 1476–1122 (2008).
- Majumdar, A. Thermoelectricity in semiconductor nanostructures. *Science* **303**, 777–778, 0036–8075 (2004).
- Dubi, Y. & Di Ventra, M. Thermoelectric effects in nanoscale junctions. *Nano Lett* **9**, 97–101 (2009).
- Dresselhaus, M. S. *et al.* New Directions for Low-Dimensional Thermoelectric Materials. *Adv Mater* **19**, 1043–1053, 1521–4095 (2007).
- Garg, A., Rasch, D., Shimshoni, E. & Rosch, A. Large violation of the Wiedemann-Franz law in Luttinger liquids. *Phys Rev Lett* **103**, 096402 (2009).
- Kubala, B., König, J. & Pekola, J. Violation of the Wiedemann-Franz law in a single-electron transistor. *Phys Rev Lett* **100**, 066801 (2008).
- Finch, C., García-Suárez, V. & Lambert, C. Giant thermopower and figure of merit in single-molecule devices. *Phys Rev B* **79**, 033405 (2009).

- Rejec, T., Žitko, R., Mravlje, J. & Ramšak, A. Spin thermopower in interacting quantum dots. *Phys Rev B* **85**, 085117 (2012).
- Uchida, K. *et al.* Observation of the spin Seebeck effect. *Nature* **455**, 778–781, 0028–0836 (2008).
- Uchida, K. *et al.* Spin seebeck insulator. *Nat Mater* **9**, 894–897 1476–1122 (2010).
- Ni, Y. *et al.* The transport properties and new device design: the case of 6,6,12-graphyne nanoribbons. *Nanoscale* **5**, 4468–4475 (2013).
- Ni, Y. *et al.* Spin seebeck effect and thermal colossal magnetoresistance in graphene nanoribbon heterojunction. *Sci Rep* **3**, 1380; doi:10.1038/srep01380 (2013).
- Parks, J. J. *et al.* Mechanical control of spin states in spin-1 molecules and the underscreened Kondo effect. *Science* **328**, 1370–1373, 1186874 (2010).
- Yee, S. K., Malen, J. A., Majumdar, A. & Segalman, R. A. Thermoelectricity in fullerene-metal heterojunctions. *Nano Lett* **11**, 4089–4094 (2011).
- Evangelii, C. *et al.* Engineering the thermopower of C60 molecular junctions. *Nano Lett* **13**, 2141–2145 (2013).
- Guo, S., Zhou, G. & Tao, N. Single molecule conductance, thermopower, and transition voltage. *Nano Lett* **13**, 4326–4332 (2013).
- Liu, J. *et al.* Ultralow thermal conductivity of atomic/molecular layer-deposited hybrid organic-inorganic zinc oxide thin films. *Nano Lett* **13**, 5594–5599 (2013).
- Reddy, P., Jang, S. Y., Segalman, R. A. & Majumdar, A. Thermoelectricity in molecular junctions. *Science* **315**, 1568–1571 (2007).
- Aradhya, S. V. V., Latha. Single-molecule junctions beyond electronic transport. *Nat Nanotechnol* **8**, 399–410 (2013).
- Wang, R.-Q., Sheng, L., Shen, R., Wang, B. & Xing, D. Y. Thermoelectric Effect in Single-Molecule-Magnet Junctions. *Phys Rev Lett* **105**, 057202 (2010).
- Zhang, Z., Jiang, L., Wang, R., Wang, B. & Xing, D. Y. Thermoelectric-induced spin currents in single-molecule magnet tunnel junctions. *Appl Phys Lett* **97**, 242101(2010).
- Cornaglia, P. S., Usaj, G. & Balseiro, C. A. Tunable charge and spin Seebeck effects in magnetic molecular junctions. *Phys Rev B* **86**, 041107 (2012).
- Misiorny, M., Weymann, I. & Barnaś, J. Interplay of the Kondo Effect and Spin-Polarized Transport in Magnetic Molecules, Adatoms, and Quantum Dots. *Phys Rev Lett* **106**, 126602 (2011).
- Misiorny, M., Weymann, I. & Barnaś, J. Influence of magnetic anisotropy on the Kondo effect and spin-polarized transport through magnetic molecules, adatoms, and quantum dots. *Phys Rev B* **84**, 035445 (2011).
- Heersche, H. *et al.* Electron Transport through Single Mn12 Molecular Magnets. *Phys Rev Lett* **96**, 206801 (2006).
- Misiorny, M., Weymann, I. & Barnaś, J. Spin diode behavior in transport through single-molecule magnets. *Europhys Lett* **89**, 18003 10295–15075 (2010).
- González, G. & Leuenberger, M. N. Berry-phase blockade in single-molecule magnets. *Phys Rev Lett* **98**, 256804 (2007).
- Lu, H.-Z., Zhou, B. & Shen, S.-Q. Spin-bias driven magnetization reversal and nondestructive detection in a single molecular magnet. *Phys Rev B* **79**, 174419 (2009).
- Lim, J. S., López, R., Limot, L. & Simon, P. Nonequilibrium spin-current detection with a single Kondo impurity. *Phys Rev B* **88**, 165403 (2013).
- Kovalev, A. A. & Tserkovnyak, Y. Thermomagnonic spin transfer and Peltier effects in insulating magnets. *Europhys Lett* **97**, 67002 (2012).
- Lu, H.-Z. & Shen, S.-Q. Using spin bias to manipulate and measure spin in quantum dots. *Phys Rev B* **77**, 235309 (2008).
- Xing, Y., Sun, Q.-f. & Wang, J. Spin bias measurement based on a quantum point contact. *Appl Phys Lett* **93**, 142107 (2008).
- Elste, F. & Timm, C. Transport through anisotropic magnetic molecules with partially ferromagnetic leads: Spin-charge conversion and negative differential conductance. *Phys Rev B* **73**, 235305 (2006).
- Niu, P.-B., Zhang, Y.-Y., Wang, Q. & Nie, Y.-H. Quantum transport through anisotropic molecular magnets: Hubbard Green function approach. *Phys Lett A* **376**, 1481–1488 (2012).
- Fransson, J. *Non-equilibrium Nano-physics: A Many-body Approach*. Vol. 809 (Springer, 2010).
- Fransson, J., Eriksson, O. & Sandalov, I. Many-Body Approach to Spin-Dependent Transport in Quantum Dot Systems. *Phys Rev Lett* **88**, 226601 (2002).
- Espósito, M. & Galperin, M. Transport in molecular states language: Generalized quantum master equation approach. *Phys Rev B* **79**, 205303 (2009).
- Kostyrko, T. & Buřka, B. Hubbard operators approach to the transport in molecular junctions. *Phys Rev B* **71**, 235306 (2005).
- Miyashita, S. & Ogata, M. Nagaoka ferromagnetism in large-spin fermionic and bosonic systems. *Phys Rev B* **80**, 174422 (2009).
- Ryndyk, D. A., Gutiérrez, R., Song, B. & Cuniberti, G. Green Function Techniques in the Treatment of Quantum Transport at the Molecular Scale. arXiv:0805.0628v2.
- Haug, H. & Jauho, A. P. Quantum Kinetics in Transport and Optics of Semiconductors (ed. Klitzing, KV) (Springer Series in Solid-State Sciences, Springer, Berlin, 1996).
- Mingo, N. Anharmonic phonon flow through molecular-sized junctions. *Phys Rev B* **74**, 125402 (2006).
- Wang, J.-S., Wang, J. & Zeng, N. Nonequilibrium Green's function approach to mesoscopic thermal transport. *Phys Rev B* **74**, 033408 (2006).



45. Yamamoto, T. & Watanabe, K. Nonequilibrium Green's Function Approach to Phonon Transport in Defective Carbon Nanotubes. *Phys Rev Lett* **96**, 255503 (2006).

Acknowledgments

This work was supported by the National Natural Science Foundation of China under Grants Nos.11074081, 11274130, 11304107 and 1371015. Numerical calculations presented in this paper were carried out using the High Performance Computing Center experimental tested in SCTS/CGCL (see <http://grid.hust.edu.cn/hpcc>).

Author contributions

K.Y. put forwards the idea and supervised the whole work. B.L. performed the numerical calculations and wrote the manuscript. B.L. and J.L. entered the discussions and analyzed the results. J.T.L. and J.H.G. made discussion on the referees' comments and revised the manuscript. All authors reviewed the manuscript.

Additional information

Competing financial interests: The authors declare no competing financial interests.

How to cite this article: Luo, B., Liu, J., Lü, J.-T., Gao, J.-H. & Yao, K.-L. Ultrahigh spin thermopower and pure spin current in a single-molecule magnet. *Sci. Rep.* **4**, 4128; DOI:10.1038/srep04128 (2014).



This work is licensed under a Creative Commons Attribution 3.0 Unported license. To view a copy of this license, visit <http://creativecommons.org/licenses/by/3.0>