

# Striatiguttulaceae, a new pleosporalean family to accommodate *Longicorpus* and *Striatiguttula* gen. nov. from palms

Sheng-Nan Zhang<sup>1,2,3,4</sup>, Kevin D. Hyde<sup>4</sup>, E.B. Gareth Jones<sup>5</sup>, Rajesh Jeewon<sup>6</sup>, Ratchadawan Cheewangkoon<sup>3</sup>, Jian-Kui Liu<sup>1,2</sup>

**1** Center for Bioinformatics, School of Life Science and Technology, University of Electronic Science and Technology of China, Chengdu 611731, P.R. China **2** Guizhou Key Laboratory of Agricultural Biotechnology, Guizhou Academy of Agricultural Science, Guiyang 550006, P.R. China **3** Department of Entomology and Plant Pathology, Faculty of Agriculture, Chiang Mai University, Chiang Mai 50200, Thailand **4** Center of Excellence in Fungal Research, Mae Fah Luang University, Chiang Rai 57100, Thailand **5** Nantgaredig 33B St. Edwards Road, Southsea, Hants, UK **6** Department of Health Sciences, Faculty of Science, University of Mauritius, Reduit, Mauritius, 80837, Mauritius

Corresponding author: Jian-Kui Liu ([lijiankui@gmail.com](mailto:lijiankui@gmail.com))

---

Academic editor: G. Mugambi | Received 28 October 2018 | Accepted 29 January 2019 | Published 1 April 2019

---

**Citation:** Zhang S-N, Hyde KD, Jones EBG, Jeewon R, Cheewangkoon R, Liu J-K (2019) Striatiguttulaceae, a new pleosporalean family to accommodate *Longicorpus* and *Striatiguttula* gen. nov. from palms. MycoKeys 49: 99–129. <https://doi.org/10.3897/mycokeys.49.30886>

---

## Abstract

Palms represent the most morphological diverse monocotyledonous plants and support a vast array of fungi. Recent examinations of palmicolous fungi in Thailand led to the discovery of a group of morphologically similar and interesting taxa. A polyphasic approach based on morphology, multi-gene phylogenetic analyses and divergence time estimates supports the establishment of a novel pleosporalean family Striatiguttulaceae, which diversified approximately 39 (20–63) MYA (crown age) and 60 (35–91) MYA (stem age). Striatiguttulaceae is characterized by stromata or ascromata with a short to long neck, trabeculate pseudoparaphyses and fusiform to ellipsoidal, 1–3-septate ascospores, with longitudinal striations and paler end cells, surrounded by a mucilaginous sheath. Multi-gene phylogenetic analysis showed that taxa of Striatiguttulaceae form a well-supported and distinct monophyletic clade in Pleosporales, and related to Ligninsphaeriaceae and Pseudoastrophaeriellaceae. However, these families can be morphologically demarcated by the slit-like ascromata and extremely large ascospores in Ligninsphaeriaceae and the rather narrow fusiform ascospores in Pseudoastrophaeriellaceae. Eight strains of Striatiguttulaceae formed two monophyletic sub-clades, which can be recognized as *Longicorpus* gen. nov. and *Striatiguttula* gen. nov. Morphologically, the genus *Longicorpus* can be differentiated from *Striatiguttula* by its elongated immersed

ascomata and fusiform ascospores with relatively larger middle cells and paler end cells. Two new species *Striatiguttula nypae* and *S. phoenicis*, and one new combination, *Longicorpus striataspora* are introduced with morphological details, and phylogenetic relationships are discussed based on DNA sequence data.

## Keywords

6 new taxa, divergence times, Dothideomycetes, epitype, sexual morphs

## Introduction

Fungi associated with palms have been intensively investigated by Hyde and his co-workers (Goh and Hyde 1996, Fröhlich and Hyde 2000, Hyde and Alias 2000, Hyde et al. 2000, Yanna et al. 2001a,b,c, Taylor and Hyde 2003, Hyde et al. 2007), and provided a significant contribution to their diversity and taxonomy. There have been a number of interesting studies on palm fungi. For example, Fröhlich and Hyde (1999) reviewed the biodiversity of palm fungi in the tropics, and proposed the ratio of host specific fungi to palm species as 33 to 1 rather than the general ratio of 6 to 1 for all plants proposed by Hawksworth (1991). Taylor et al. (2000) investigated biogeographical distribution of microfungi from temperate and tropical palms, and found different fungal assemblages from these two regions, and also revealed that the difference was more related to climatic influences than hosts sampled. Subsequently, Yanna et al. (2001b, 2002) studied fungal communities and succession of palms, and pointed out that fungal species compositions were distinct on different hosts and at different sites, and even differed from different palm tissues. In addition, some studies were dedicated to endophytic palmicolous fungi (Rodrigues and Samuels 1990, Taylor et al. 1999, Fröhlich et al. 2000, Hyde and Soyong 2008, Pinruan et al. 2010a, Mahmoud et al. 2017) and pathogens (Fröhlich et al. 1997, Hyde and Cannon 1999, Elliott et al. 2010, Mohammadi 2014). Other studies have focused on fungi on peat swamp palms (Pinruan et al. 2002, 2007, 2008, 2010b, 2014, Pinnoi et al. 2003) and from mangrove palms (Suetrong et al. 2009, Loilong et al. 2012, Zhang et al. 2018). All these examples indicate that species are diverse and palms harbour numerous undescribed microfungi.

Ascomycetes from palms are a very diverse assemblage and the best represented family is Xylariaceae (Xylariales, Sordariomycetes), with three commonly recorded genera *Anthostomella* (Xylariaceae), *Linocarpon* (Linocarpaceae) and *Oxydothis* (Oxydothidaceae) (Taylor and Hyde 2003, Hidayat et al. 2006, Konta et al. 2016b, 2017). In recent years, a series of Dothideomycetes from palms were described as new on the basis of morphology and phylogenetic analyses, such as astrosphaeriella-like species (recognized as three groups: *Astrosphaeriellopsis*, *Astrosphaeriellaceae* and *Pseudoastrosphaeriellaceae*) and species of *Botryosphaeria* (Botryosphaeriaceae), *Fissuroma* (Aigialaceae), *Neodeightonia* (Botryosphaeriaceae) and *Rousoella* (Rousoellaceae) (Liu et al. 2010, 2011a,b, 2012, 2014, Phookamsak et al. 2015, Konta et al. 2016a,c, Wanasinghe et al. 2018). The diversity of palmicolous ascomycetes recovered can in part be due to the wide range of hosts and habitats sampled, the latter including terrestrial, freshwater, and marine or mangrove ecosystems. There are four palm species encoun-

tered as mangrove associates in Asia (Tomlinson 1986): *Calamus erinaceus* (Becc.) J.Dransf., *Nypa fruticans* Wurmb., *Oncosperma tigillarum* (Jack) Ridl. and *Phoenix paludosa* Roxb. Loilong et al. (2012) documented the greatest biodiversity of fungi on *N. fruticans* listing 135 taxa (90 Ascomycota, three Basidiomycota and 42 asexual taxa), of which 97 taxa were described (Hyde 1992a,b, Hyde et al. 1999, Hyde and Alias 2000, Pilantanapak et al. 2005, Hyde and Sarma 2006) with support from DNA sequence data (Suetrong et al. 2015). Nevertheless, few studies have focused on fungi growing on *Phoenix paludosa*, where *Lignincola conchicola*, *Kirschsteiniothelia phoenicis* and *Acuminatispora palmarum* were recently reported (Liu et al. 2011a, Hyde et al. 2018, Zhang et al. 2018).

*Nypa fruticans* is an ancient palm that grows in brackish water, while *Phoenix paludosa* is found in the upper parts of mangroves and tolerates salt water, with both occurring in Thailand mangrove sites. In an ongoing study on the taxonomy of fungi occurring on palms, we collected fungi colonizing these two palm hosts from different mangrove sites in Thailand. Interestingly, a group of ascomycetes recovered appears to be new to science based on morphology and multi-gene phylogenetic evidence. The aim of this study was to characterize the novel taxa and investigate their phylogenetic relationships in the order Pleosporales, as well as apply the divergence times as additional evidence, especially in higher taxa ranking, for the establishment of new family Striatiguttulaceae.

## Materials and methods

### Specimen collection, examination and single spore isolation

Decayed rachides or petioles of *Nypa fruticans* and *Phoenix paludosa* were collected from Chanthaburi, Krabi and Ranong provinces in Thailand. The collected specimens were washed under running water and examined via laboratory procedures as outlined by Jones and Hyde (1988). Morphological characters were observed using a Carl Zeiss stereo microscope fitted with an AxioCam ERC 5S camera and photographed by a Nikon ECLIPSE 80i compound microscope fitted with a Canon EOS 600D digital camera. Free hand sections of fruiting bodies were made into slides within water mounts and observed under Motic SMZ 168 stereo microscope. Measurements were taken by Tarosoft Image Frame Work program v. 0.9.7 and images used for figures processed with Adobe Photoshop CS6 Extended v. 13.0 software. Isolations were obtained from single spores as described in Choi et al. (1999). New taxa were established based on recommendations outlined by Jeewon and Hyde (2016). The strains isolated in this study were deposited in Mae Fah Luang University Culture Collection (MFLUCC) and Guizhou Culture Collection (GZCC). Herbarium specimens were deposited at the herbaria of Mae Fah Luang University (MFLU), Chiang Rai, Thailand and Kunming Institute of Botany Academia Sinica (HKAS), Kunming, China. MycoBank numbers (Crous et al. 2004) and Facesoffungi numbers (Jayasiri et al. 2015) are provided.

## DNA extraction, PCR amplification and sequencing

Fungal genomic DNA was extracted from fresh mycelia scraped from the margin of a colony on PDA that was incubated at 25 °C–28 °C for 30 days, followed by the Ezup Column Fungi Genomic DNA Purification Kit (Sangon Biotech (Shanghai) Co., Ltd, China) following the manufacturer's instructions. Two partial rDNA genes and two protein coding genes were used in this study: the large subunit of the nuclear ribosomal RNA genes (LSU), the small subunit of the nuclear ribosomal RNA (SSU), the translation elongation factor 1-alpha (*TEF1a*) and the second largest subunit of RNA polymerase II (*RPB2*). The primers used were LR0R and LR5 for LSU (Vilgalys and Hester 1990), NS1/NS4 for SSU (White et al. 1990), EF1-983F/EF1-2218R for *TEF1a* (Rehner and Buckley 2005) and fRPB2-5F/fRPB2-7cR for *RPB2* (Liu et al. 1999). The amplification reactions were performed in 25 µL of PCR mixtures containing 9.5 µL ddH<sub>2</sub>O, 12.5 µL 2× PCR MasterMix (TIANGEN Co., China), 1 µL DNA template and 1 µL of each primer. The PCR thermal cycle program for LSU, SSU and *TEF1a* amplification were as follows: initial denaturing step of 94 °C for 3 min, followed by 40 cycles of denaturation at 94 °C for 45 seconds, annealing at 56 °C for 50 seconds, elongation at 72 °C for 1 min, and final extension at 72 °C for 10 min. The PCR thermal cycle program for the partial RNA polymerase second largest subunit (*RPB2*) was followed as initially 95 °C for 5 min, followed by 40 cycles of denaturation at 95 °C for 1 min, annealing at 52 °C for 2 min, elongation at 72 °C for 90 seconds, and final extension at 72 °C for 10 min. Purification and sequencing of PCR products were carried out with primers mentioned above at Sangon Biotech (Shanghai) Co., Ltd, China.

## Sequence alignment and phylogeny analyses

A concatenated data set of LSU, SSU, *TEF1a* and *RPB2* sequences was used for phylogenetic analyses with the inclusion of reference taxa from GenBank (Table 1). Sequences were aligned using MAFFT v.7 (<http://mafft.cbrc.jp/alignment/server/>) (Kato and Standley 2013) and then checked visually and manually optimized using BioEdit v.7.0.9 (Hall 1999). Representative families in Pleosporales and several major groups in Dothideomycetes were included in our analyses, and taxa in Arthoniomycetes were selected as outgroup. A maximum likelihood (ML) analysis was performed at the CIPRES web portal (Miller et al. 2010) using RAxML v.7.2.8 as part of the “RAxML-HPC Blackbox (8.2.10)” tool (Stamatakis 2006, Stamatakis et al. 2008). A general time-reversible model (GTR) was applied with a discrete GAMMA distribution and four rate classes. Fifty thorough ML tree searches were carried out in RAxML v.7.2.7 under the same model. One thousand non-parametric bootstrap iterations were run with the GTR model and a discrete gamma distribution. The resulting replicates were plotted on to the best scoring tree obtained previously.



**Table 1.** Taxa used in this study and their GenBank accession numbers. The type species of each genus are marked with superscript <sup>T</sup> and ex-type strains are in bold.

Taxa	Strain / Culture	GenBank Accession numbers			
		LSU	SSU	<i>TEF1a</i>	<i>RPB2</i>
<i>Acrocardiopsis patilii</i>	BCC28167	GU479773	GU479737	–	GU479812
<i>Acrocardiopsis patilii</i> <sup>T</sup>	BCC28166	GU479772	GU479736	–	GU479811
<i>Acuminatispora palmarum</i>	MFLUCC 18-0460	MH390438	MH390402	MH399249	MH399252
<b><i>Acuminatispora palmarum</i><sup>T</sup></b>	MFLUCC 18-0264	MH390437	MH390401	MH399248	–
<i>Aigialus grandis</i> <sup>T</sup>	BCC18419	GU479774	GU479738	GU479838	GU479813
<i>Aigialus mangrovei</i>	BCC33563	GU479776	GU479741	GU479840	GU479815
<i>Aigialus parvus</i>	BCC 18403	GU479778	GU479744	GU479842	GU479817
<i>Aigialus rhizophorae</i>	BCC 33572	GU479780	GU479745	GU479844	GU479819
<i>Alternaria alternata</i>	CBS 916.96	DQ678082	DQ678031	DQ677927	DQ677980
<b><i>Amniculicola lignicola</i><sup>T</sup></b>	Ying01	EF493861	EF493863	–	EF493862
<i>Anteaglonium abbreviatum</i> <sup>T</sup>	ANM 925a	GQ221877	–	GQ221924	–
<b><i>Anteaglonium globosum</i></b>	ANM 925.2	GQ221879	–	GQ221925	–
<i>Anteolophiotrema brunneosporum</i> <sup>T</sup>	CBS 123095	LC194340	–	LC194382	LC194419
<i>Aquasubmersa japonica</i>	KT 2862	LC061587	LC061582	–	LC194421
<b><i>Aquasubmersa mircensis</i><sup>T</sup></b>	MFLUCC 11-0401	JX276955	JX276956	–	–
<i>Arthonia dispersa</i>	UPSC2583	AY571381	AY571379	–	–
<i>Ascocratera manglicola</i> <sup>T</sup>	BCC 09270	GU479782	GU479747	GU479846	GU479821
<i>Astrosphaeriella fusispora</i> <sup>T</sup>	MFLUCC 10-0555	KT955462	–	–	KT955413
<i>Astrosphaeriella neofusispora</i>	MFLUCC 11-0161	KT955463	KT955444	–	KT955418
<i>Astrosphaeriella stellata</i>	KT998	AB524592	AB524451	–	–
<i>Astrosphaeriellopsis bakeriana</i>	MFLUCC 11-0027	JN846730	–	–	–
<i>Astrosphaeriellopsis bakeriana</i> <sup>T</sup>	CBS 115556	GU301801	–	GU349015	–
<b><i>Bimuria novae-zelandiae</i><sup>T</sup></b>	CBS 107.79	AY016356	AY016338	DQ471087	DQ470917
<i>Botryosphaeria dothidea</i>	CMW 8000	KF766319	KF766233	–	–
<i>Byssotbecium circinans</i> <sup>T</sup>	CBS 675.92	AY016357	–	GU349061	DQ767646
<i>Capnodium coffeae</i>	CBS 147.52	DQ247800	DQ247808	DQ471089	DQ247788
<i>Caryospora minima</i>	–	EU196550	EU196551	–	–
<b><i>Caryospora aquatica</i></b>	MFLUCC 11-0008	MH057847	MH057850	–	–
<i>Cladosporium herbarum</i>	CBS 399.80	DQ678074	DQ678022	DQ677918	DQ677971
<i>Cryptocoryneum condensatum</i>	CBS 122629	LC194351	LC194309	LC096139	LC194433
<b><i>Cryptocoryneum pseudorilstonei</i></b>	CBS 113641	LC194364	LC194322	LC096152	LC194446
<i>Delitschia chaetomioides</i>	SMH 3253.2	GU390656	–	–	–
<b><i>Delitschia didyma</i></b>	UME 31411	DQ384090	AF242264	–	–
<i>Delitschia winteri</i>	CBS 225.62	DQ678077	–	–	DQ677975
<i>Dendrographa decolorans</i>	Ertz 5003 (BR)	NG_027622	AY548809	–	–
<i>Didymella exigua</i> <sup>T</sup>	CBS 183.55	EU754155	EU754056	–	–
<i>Didymosphaeria rubi-ulmifolii</i>	MFLUCC 14-0023	KJ436586	KJ436588	–	–
<i>Dissoconium aciculare</i>	CBS 204.89	GU214419	GU214523	–	–
<i>Dothidotthia aspera</i>	CPC 12933	EU673276	EU673228	–	–
<i>Dothidotthia symphoricarpi</i> <sup>T</sup>	CPC 12929	EU673273	EU673224	–	–
<i>Extremus antarcticus</i>	CCFEE 5312	KF310020	–	–	KF310086
<i>Fissuroma bambusae</i>	MFLUCC 11-0160	KT955468	KT955448	KT955430	KT955417
<i>Halothia posidoniae</i> <sup>T</sup>	BBH 22481	GU479786	–	–	–
<b><i>Hermatomyces iriomotensis</i></b>	MAFF 245730	LC194367	–	LC194394	LC194449
<i>Hypostroma caimitalense</i>	GKM 1165	GU385180	–	–	–
<i>Hypostroma saxicola</i> <sup>T</sup>	SMH 5005	GU385181	–	–	–
<i>Hysterium angustatum</i>	CBS 236.34	FJ161180	GU397359	FJ161096	–
<i>Hysterobrevium smilacis</i>	CBS 114601	FJ161174	FJ161135	FJ161091	–
<i>Latorua caligans</i> <sup>T</sup>	CBS 576.65	KR873266	–	–	–

Taxa	Strain / Culture	GenBank Accession numbers			
		LSU	SSU	<i>TEF1a</i>	<i>RPB2</i>
<i>Latorua grootfonteinensis</i>	CBS 369.72	KR873267	–	–	–
<i>Lecanactis abietina</i>	Ertz 5068 (BR)	AY548812	AY548805	–	–
<b><i>Longicorpus striataspora</i><sup>T</sup></b>	MFLUCC 18-0267	MK035988	MK035973	MK034428	MK034436
<i>Longicorpus striataspora</i>	MFLUCC 18-0268	MK035989	MK035974	MK034429	MK034437
<i>Longicorpus striataspora</i>	MFLUCC 17-2515	MK035990	MK035975	MK034430	MK034438
<i>Longicorpus striataspora</i>	MFLUCC 17-2516	MK035991	MK035976	MK034431	MK034439
<i>Lepidosphaeria nicotiae</i>	CBS 101341	DQ678067	–	–	DQ677963
<i>Leptosphaeria doliolum</i> <sup>T</sup>	CBS 505.75	GU301827	GU296159	GU349069	–
<i>Leptoxylum fumago</i>	CBS 123.26	GU301831	GU214535	GU349051	GU371741
<i>Ligninsphaeria jonesii</i>	GZCC 15-0080	KU221038	–	–	–
<b><i>Ligninsphaeria jonesii</i><sup>T</sup></b>	MFLUCC 15-0641	KU221037	–	–	–
<i>Lindgomyces cinctosporae</i>	R56-1	AB522431	AB522430	–	–
<i>Lindgomyces ingoldianus</i> <sup>T</sup>	ATCC 200398	AB521736	AB521719	–	–
<i>Lindgomyces rotundatus</i>	KT1096	AB521740	AB521723	–	–
<i>Lophiostoma macrostomoides</i>	GKM1033	GU385190	–	–	–
<i>Lophiotrema boreale</i>	CBS 114422	LC194375	–	LC194402	LC194457
<i>Lophiotrema lignicola</i>	CBS 122364	GU301836	GU296166	GU349072	–
<i>Lophiotrema nucula</i> <sup>T</sup>	CBS 627.86	GU301837	GU296167	GU349073	GU371792
<i>Macrodiplodiopsis desmazieri</i> <sup>T</sup>	CPC 24971	KR873272	–	–	–
<i>Massaria anomia</i>	CBS 591.78	GU301839	GU296169	–	GU371769
<i>Massaria gigantispora</i>	M26	HQ599397	HQ599447	HQ599337	–
<i>Massaria inquinans</i> <sup>T</sup>	M19	HQ599402	HQ599444	HQ599342	HQ599460
<i>Massarina eburnea</i> <sup>T</sup>	CBS 473.64	GU301840	GU296170	GU349040	GU371732
<i>Mauritiana rhizophorae</i> <sup>T</sup>	BCC 28866	GU371824	–	GU371817	GU371796
<i>Melanomma pulvis-pyrius</i> <sup>T</sup>	CBS 124080	GU456323	GU456302	GU456265	GU456350
<i>Murispora rubicunda</i> <sup>T</sup>	IFRD 2017	FJ795507	GU456308	–	–
<i>Mycosphaerella graminicola</i>	CBS 292.38	DQ678084	DQ678033	–	DQ677982
<b><i>Neoastrorphaeriella krabiensis</i><sup>T</sup></b>	MFLUCC 11-0025	JN846729	JN846739	–	–
<i>Neodeightonia palmicola</i>	MFLUCC10-0822	HQ199222	HQ199223	–	–
<i>Neotestudina rosatii</i>	CBS 690.82	DQ384107	DQ384069	–	–
<b><i>Nigrograna mackinnonii</i><sup>T</sup></b>	CBS 674.75	GQ387613	–	–	KF015703
<i>Nigrograna marina</i>	CY 1228	GQ925848	–	–	GU479823
<i>Phaeosphaeria oryzae</i> <sup>T</sup>	CBS 110110	GQ387591	GQ387530	–	KF252193
<i>Phoma herbarum</i> <sup>T</sup>	CBS 276.37	DQ678066	DQ678014	DQ677909	DQ677962
<i>Piedraia hortae</i> var. <i>hortae</i>	CBS 480.64	GU214466	AY016349	–	DQ677990
<i>Pleomassaria siparia</i> <sup>T</sup>	CBS 279.74	DQ678078	DQ678027	–	DQ677976
<b><i>Pleospora herbarum</i><sup>T</sup></b>	CBS 191.86	DQ247804	DQ247812	DQ471090	DQ247794
<b><i>Polyposphaeria fusca</i><sup>T</sup></b>	KT 1616	AB524604	AB524463	–	–
<i>Preussia funiculata</i> <sup>T</sup>	CBS 659.74	GU301864	–	–	–
<i>Prosthemium orientale</i>	KT1669	AB553748	AB553641	–	–
<b><i>Pseudoastrophaeriella africana</i></b>	MFLUCC 11-0176	KT955474	KT955454	KT955436	KT955421
<b><i>Pseudoastrophaeriella bambusae</i></b>	MFLUCC 11-0205	KT955475	–	KT955437	KT955414
<b><i>Pseudoastrophaeriella longicolla</i></b>	MFLUCC 11-0171	KT955476	–	KT955438	KT955420
<b><i>Pseudoastrophaeriella thailandensis</i><sup>T</sup></b>	MFLUCC 11-0144	KT955478	KT955457	KT955440	KT955416
<b><i>Pseudotetraploa curviappendiculata</i><sup>T</sup></b>	HC 4930	AB524608	AB524467	–	–
<b><i>Quadricruva septentrionalis</i><sup>T</sup></b>	HC 4984	AB524616	AB524475	–	–
<i>Racodium rupestre</i>	L346	EU048583	EU048575	–	–
<i>Roccella fuciformis</i>	Tehler 8171	FJ638979	–	–	–
<b><i>Rousoella nitidula</i><sup>T</sup></b>	MFLUCC 11-0182	KJ474843	–	KJ474852	KJ474859
<i>Rousselopsis macrospora</i>	MFLUCC 12-0005	KJ474847	–	KJ474855	KJ474862

Taxa	Strain / Culture	GenBank Accession numbers			
		LSU	SSU	<i>TEF1a</i>	<i>RPB2</i>
<i>Salsuginea ramicola</i>	KT2597.2	GU479801	GU479768	GU479862	GU479834
<i>Salsuginea ramicola</i> <sup>T</sup>	KT 2597.1	GU479800	GU479767	GU479861	GU479833
<b><i>Striatiguttula nypae</i><sup>T</sup></b>	MFLUCC 18-0265	MK035992	MK035977	MK034432	MK034440
<i>Striatiguttula nypae</i>	MFLUCC 17-2517	MK035993	MK035978	MK034433	MK034441
<i>Striatiguttula nypae</i>	MFLUCC 17-2518	MK035994	MK035979	MK034434	–
<b><i>Striatiguttula phoenicis</i><sup>T</sup></b>	MFLUCC 18-0266	MK035995	MK035980	MK034435	MK034442
<b><i>Tetraplophaeria sasicola</i><sup>T</sup></b>	KT563	AB524631	AB524490	–	–
<b><i>Trematosphaeria pertusa</i><sup>T</sup></b>	CBS 122371	FJ201992	–	–	GU371801
<b><i>Triplophaeria maxima</i><sup>T</sup></b>	KT 870	AB524637	AB524496	–	–
<i>Ulospora bilgramii</i> <sup>T</sup>	CBS 101364	DQ678076	DQ678025	DQ677921	DQ677974
<i>Verruculina enalia</i> <sup>T</sup>	BCC 18401	GU479802	–	GU479863	GU479835
<i>Wicklowia aquatica</i>	AF289-1	GU045446	–	–	–
<b><i>Wicklowia aquatica</i><sup>T</sup></b>	F76-2	GU045445	GU266232	–	–
<i>Zopfia rhizophila</i> <sup>T</sup>	CBS 207.26	DQ384104	–	–	–

Abbreviations: **ATCC**: American Type Culture Collection, Virginia, USA; **BHB**: Biotec Bangkok Herbarium, Thailand; **BCC**: BIOTEC Culture Collection, Bangkok, Thailand; **CBS**: Centraal bureau voor Schimmel cultures, Utrecht, The Netherlands; **CPC**: Collection of Pedro Crous housed at CBS; **DAOM**: Plant Research Institute, Department of Agriculture (Mycology), Ottawa, Canada; **GZCC**: Guizhou Culture Collection; **IFRDCC**: Culture Collection, International Fungal Research & Development Centre, Chinese Academy of Forestry, Kunming, China; **JCM**: the Japan Collection of Microorganisms, Japan; **MAFF**: Ministry of Agriculture, Forestry and Fisheries, Japan; **MFLU**: Mae Fah Luang University Herbarium Collection; **MFLUCC**: Mae Fah Luang University Culture Collection, Chiang Rai, Thailand. **ANM**: A.N. Miller; **GKM**: G.K. Mugambi; **JK**: J. Kohlmeier; **KT**: K. Tanaka; **SMH**: S.M. Huhndorf.

Maximum parsimony (MP) analyses were performed using the heuristic search option with 1000 random taxa additions and tree bisection and reconnection (TBR) as the branch-swapping algorithm. All characters were unordered and of equal weight; gaps were treated as missing data. Maxtrees setting was 1000, and zero-length branches were collapsed, and all parsimonious trees were saved. Clade stability was assessed using a bootstrap (BT) analysis with 1000 replicates, each with 10 replicates of random stepwise addition of taxa (Hillis and Bull 1993). Tree length [TL], Consistency index [CI], Retention index [RI], Rescaled consistency index [RC], Homoplasy index [HI] were calculated.

The Bayesian analysis was performed using PAUP v.4.0b10 (Swofford 2002) and MrBayes v.3.1.2 (Ronquist and Huelsenbeck 2003). The best model for different genes partition in the concatenated data set was determined by MrModeltest 2.3 (Nylander 2004). Posterior probabilities (Rannala and Yang 1996) were determined by Markov Chain Monte Carlo sampling (MCMC) (Larget and Simon 1999) in MrBayes v.3.1.2. Four simultaneous Markov chains were run for 10 million generations and trees were sampled every 1000<sup>th</sup> generation, thus 10,000 trees were obtained. The suitable burn-in phases were determined by inspecting likelihoods and parameters in Tracer version 1.6 (Rambaut et al. 2013). Based on the tracer analysis, the first 1,000 trees representing 10% were discarded as the burn-in phase in the analysis. The remaining trees were used to calculate posterior probabilities in the majority rule consensus tree (critical value for the topological convergence diagnostic set to 0.01). Phylogenetic tree was visualized by FigTree v.1.4.2 (Rambaut 2014), and the alignment is deposited in TreeBASE under the accession number TB2: S23392 (<http://purl.org/phylo/treebase/phyloids/study/TB2:S23392>).

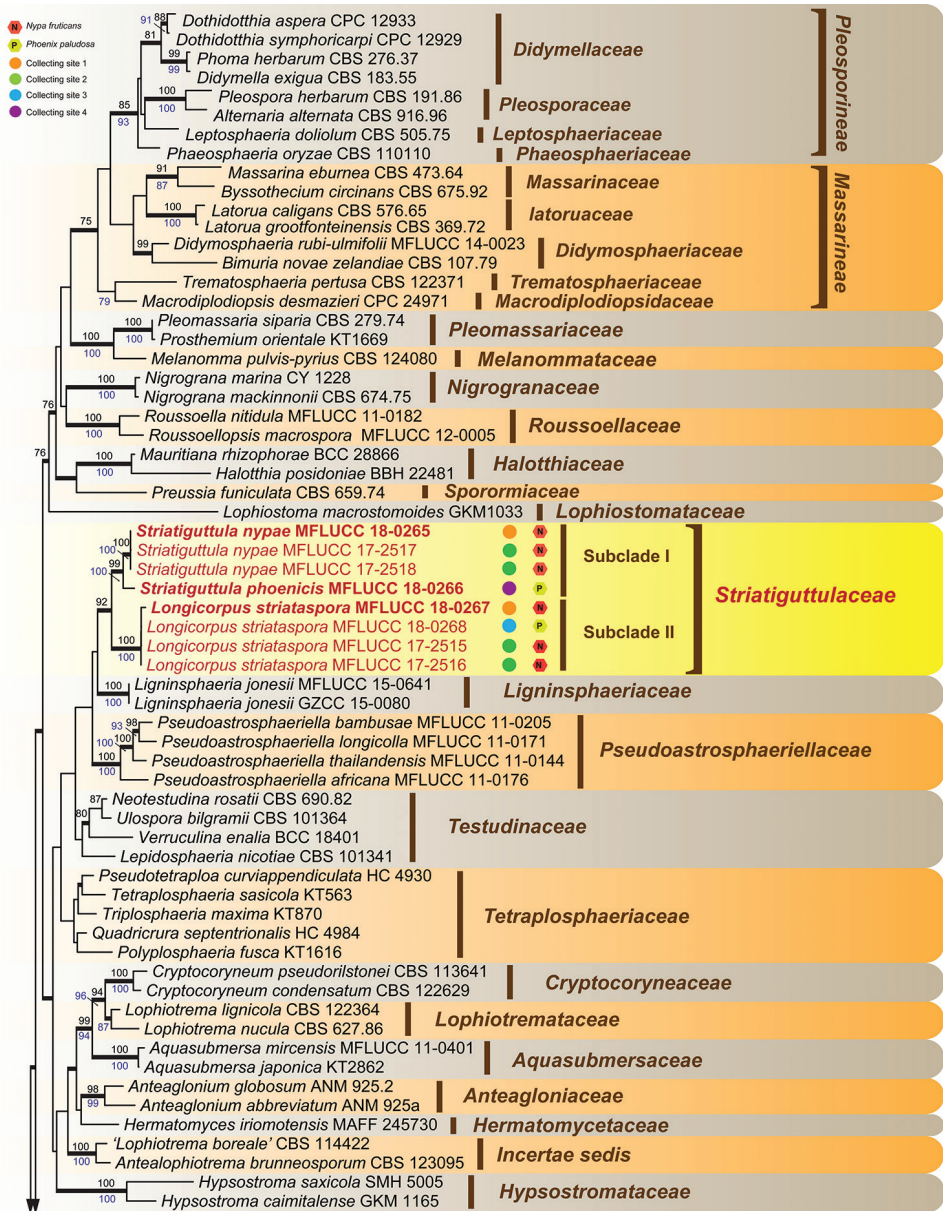
## Divergence times estimates

One secondary data and two fungal fossil calibrations were used in this study. The split between Arthoniomycetes and Dothideomycetes was selected as a secondary calibration point referring to previous evolutionary molecular studies (Gueidan et al. 2011, Prieto and Wedin 2013, Beimforde et al. 2014, Pérez-Ortega et al. 2016, Phukhamsakda et al. 2016), with a mean of 300 MYA and standard deviation (SD) of 50 MYA in a normal posterior distribution. Simultaneously, one ascomycete fossil Metacapnodiaceae (Schmidt et al. 2014), was used as the common ancestor of *Capnodiiales*, with constraint of mean 100 MYA and SD 150 MYA in a normal posterior distribution (Pérez-Ortega et al. 2016, Hongsanan et al. 2016, Phukhamsakda et al. 2016, Liu et al. 2017). Whereas the fossil *Margaretbarromyces dictyosporus* (Mindell et al. 2007, Berbee and Taylor 2010, Taylor et al. 2015) was used to calibrate the *Aigialus* (Aigialaceae) crown, with an offset of 35 MYA in a gamma distribution (Phukhamsakda et al. 2016). Divergence time estimates were carried out by BEAST v 1.8.0 (Drummond et al. 2012). Aligned sequence data were partitioned separately for LSU, SSU, *TEF1a* and *RPB2* data set, and loaded to prepare an XML file constructed with BEAUti v1.8.0. The substitution models, clock models and the tree prior parameters were set to be linked. The nucleotide substitution model was set to GTR (Generalized Time Reversible) + Gamma + Invariant sites, with estimated base frequencies, four gamma categories and without partitions. An uncorrelated relaxed clock model (Drummond et al. 2007) with a lognormal distribution of rates for each gene estimate was used for the analyses. We used a Yule tree prior, which assumes a constant speciation rate per lineage, and a randomly generated starting tree. The analysis was run for 100 million generations and parameters were sampled every 10,000 generations. Tracer v.1.6 (Rambaut et al. 2013) was used to analyze the trace files, and the acceptable effective sample sizes (ESS) values were greater than 200. Maximum clade credibility (MCC) trees were annotated using TreeAnnotator v1.8.0 and then visualized in FigTree v.1.4.2 (Rambaut 2014).

## Results

### Phylogenetic results

The multi-gene dataset comprised 113 taxa and 4113 characters after alignment (LSU: 919 bp; SSU: 1245 bp; *TEF1a*: 929 bp; *RPB2*: 1020 bp) including gaps. RAxML, MP and Bayesian analyses were conducted and resulted in generally congruent topologies, and the familial assignments are similar to previous work (Hashimoto et al. 2017, Liu et al. 2017). Maximum parsimony analyses indicated that 2,302 characters were constant, 355 variable characters parsimony uninformative and 1,456 characters are parsimony-informative. A heuristic search yield four equally most parsimonious trees (TL = 10905, CI = 0.278, RI = 0.561, RC = 0.156, HI = 0.722). The combined dataset provided higher confidence values for the familial level than those of the individual gene trees



**Figure 1.** RAxML tree of Pleosporales based on analysis of combined LSU, SSU, *TEF1a* and *RPB2* sequence data. Bootstrap values for ML and MP equal to or greater than 75% are placed above and below the branches respectively. Branches with Bayesian posterior probabilities (PP) from MCMC analysis equal to or greater than 0.95 are in bold. Newly generated sequences are indicated in red.

(data not shown), and RAxML analysis based on LSU, SSU, *TEF1a* and *RPB2* yielded a best sorting tree (Figure 1) with a final optimization likelihood value of -52455.532059.

The eight newly generated strains clustered together and positioned outside the two suborders (Massariniae and Pleosporinae) of Pleosporales, and formed a well-supported



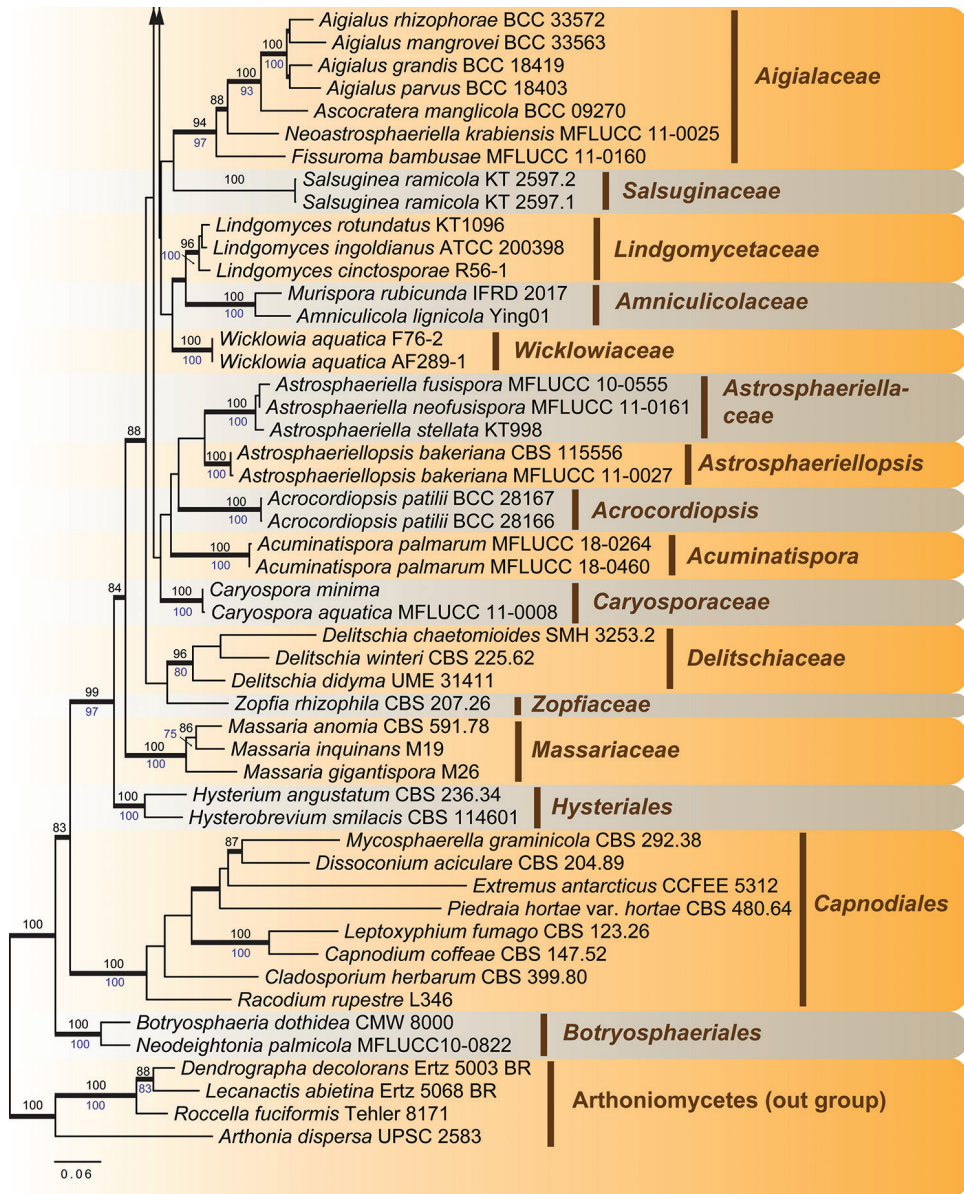
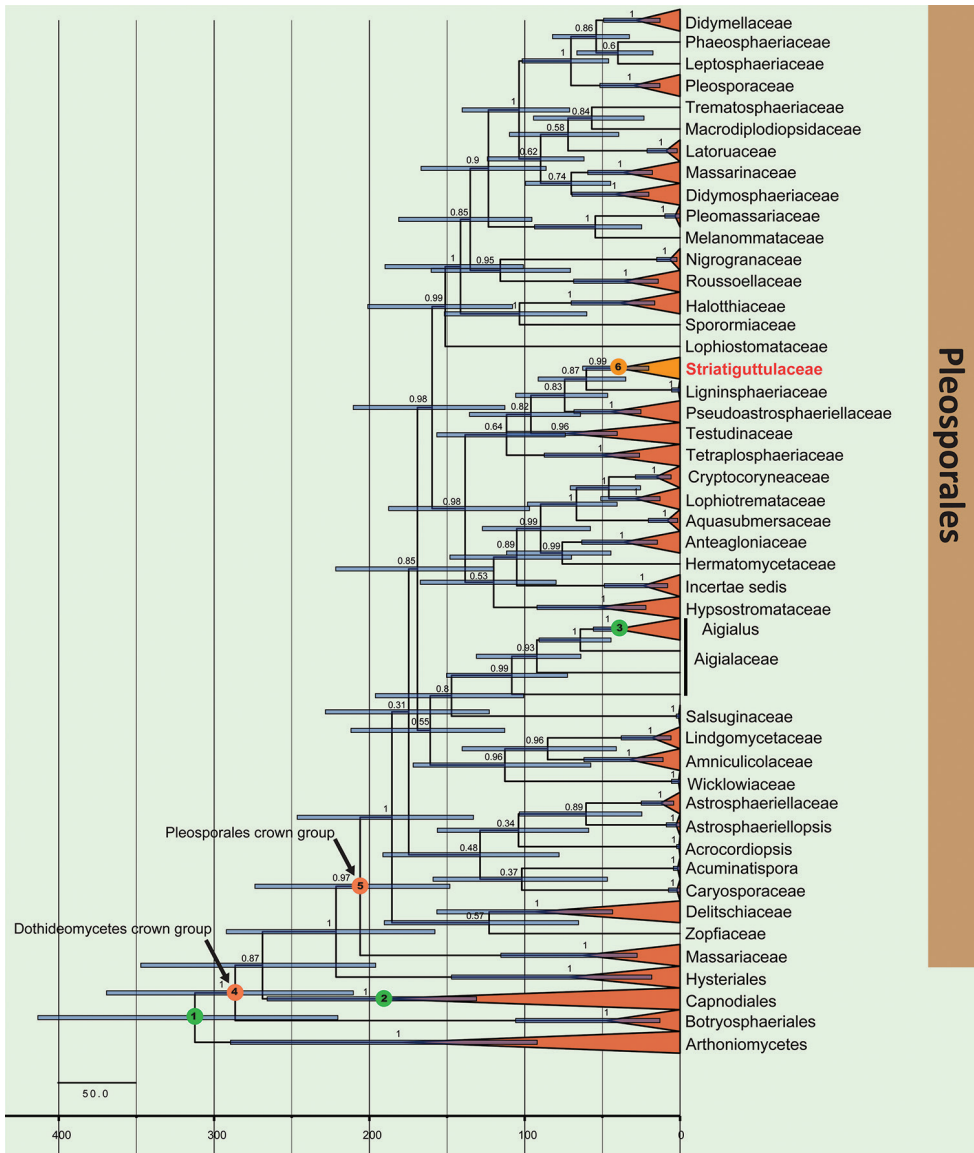


Figure 1. Continued.

monophyletic clade and represented as a new lineage of Pleosporales. The phylogeny also revealed that this clade is close to Ligninsphaeriaceae, Pseudoastrophaeriellaceae, Testudinaceae and Tetraplosphaeriaceae, and can be recognized as a novel family (Striatiguttulaceae). Furthermore, the eight strains formed two well-supported monophyletic sub-clades, which can be identified as two new genera (*Longicorpus* and *Striatiguttula*) with three species (*Longicorpus striataspora*, *Striatiguttula nypae* and *S. phoenicis*).





**Figure 2.** Maximum clade credibility (MCC) tree with divergence times estimates for Pleosporales and selected groups in Dothideomycetes, obtained from a Bayesian approach (BEAST) using one secondary and two fossil calibrations. Numbers at nodes indicate posterior probabilities (pp) for node support; bars correspond to the 95% highest posterior density (HPD) intervals. Numbers inside green circles indicate nodes used for calibrations: 1) the split of Arthoniomycetes and Dothideomycetes; 2) Metacapnodiaceae; 3) *Margaretbarromyces dictyosporus*.

**Table 2.** Divergence time estimates of Pleosporales and selected lineages of Dothideomycetes obtained from a Bayesian approach (BEAST) on basis of three calibrations. For each divergence, the median and the 95% highest posterior density (HPD) are provided. Divergence times are provided in millions of years (MYA).

Nodes	Crown group	Divergence times				
		This study		Phukhamsakda et al. (2016)	Liu et al. (2017)	Liu et al. (2018)
		Crown age	Stem age	Crown age		
1	Arthoniomycetes-Dothideomycetes	312 (220–413)	–	317	–	310–320
2	<i>Capnodiales</i>	195 (131–266)	269 (196–347)	147	216/ (151–283)	~120
3	<i>Aigialus</i>	41 (35–56)	64 (44–91)	39	–	~50
4	Dothideomycetes	286 (210–369)	312 (220–413)	293 -(210–370)	341 (257–425)	255 (166–344)
5	<i>Pleosporales</i>	206 (148–274)	221 (158–292)	211 -(140–270)	204 (148–260)	195 (124–271)
6	Striatiguttulaceae	39 20–63)	60 (35–91)	–	–	–

### Divergence time estimates

The maximum clade credibility (MCC) tree with divergence estimates (Figure 2) obtained through BEAST was topologically identical to those recovered by Bayesian and ML procedures with regards to the placement Pleosporales and several major lineages within Dothideomycetes. The mean dates of Pleosporales crown corroborate reported estimates (Phukhamsakda et al. 2016, Liu et al. 2017, 2018) are provided in Table 2. The results showed that the new family Striatiguttulaceae diverged approximately 60 (35–91) MYA, which is line with recommendations for ranking families proposed in related studies (Hyde et al. 2017, Liu et al. 2017).

### Taxonomy

#### Striatiguttulaceae S.N.Zhang, K.D.Hyde & J.K.Liu, fam. nov.

Mycobank: MB828272

Facesoffungi: FoF 05032

**Etymology.** Name refers to the name of the type genus.

**Description.** *Saprobic* on palms distributed in mangrove habitats. **Sexual morph:** *Stromata* black, scattered to gregarious, immersed beneath host epidermis, and erumpent to superficial, with a papilla or a short to long neck, ampulliform, subglobose or conical, uni-loculate or bi-loculate, coriaceous to carbonaceous, ostiolate, periphysate, papillate, clypeate or not clear, glabrous or somewhat interwoven pale brown hyphae or setae. *Peridium* composed of several brown to hyaline cell layers. *Hamathecium* of trabeculate pseudoparaphyses. *Asci* 8-spored, bitunicate, cylindrical-clavate, pedicellate. *Ascospores* hyaline to brown, uniseriate to biseriate or triseriate, fusiform or ellipsoidal, 1–3-septate, striate, guttulate, with paler end cells and surrounded by a mucilaginous sheath. **Asexual morph:** Undetermined.

**Type genus.** *Striatiguttula* S.N.Zhang, K.D.Hyde & J.K.Liu.

**Notes.** The family Striatiguttulaceae is introduced to accommodate two new genera *Longicorpus* and *Striatiguttula*, characterized by the immersed, and erumpent to superficial stromata, with a papilla or a short to long neck, trabeculate pseudo-paraphyses, bitunicate asci, and hyaline to brown, fusiform to ellipsoidal, striate, guttulate, 1–3-septate ascospores, with paler end cells and surrounded by a mucilaginous sheath. Members of Striatiguttulaceae are morphologically similar to the genera *Leptosphaeria* and *Trematosphaeria*, but they are phylogenetically distinct and also differ in ascospores characteristics and the latter two have coriaceous, heavily pigmented thick-walled peridium. Multi-gene phylogenetic analyses revealed a close relationship of Striatiguttulaceae to Ligninsphaeriaceae and Pseudoastrophaeriellaceae. However, Striatiguttulaceae differs from Pseudoastrophaeriellaceae as the latter has 1–3-septate or 2–5-septate ascospores, which are narrowly fusiform with acute ends and all cells are concolorous. The slit-like ascomata and broad fusiform, 1-septate, rather large ascospores (79–121 × 14–23 μm) in Ligninsphaeriaceae (Zhang et al. 2016) are distinct from those found in Striatiguttulaceae. Additionally, a divergence time estimate analysis indicated that the crown age 39 (20–63) MYA and stem age 60 (35–91) MYA of Striatiguttulaceae, match with the recommendations of using divergence times to recognize families in Liu et al. (2017). Attempts were made to culture the asexual morph in order to build comprehensive familial concept for Striatiguttulaceae, but it was not successful. Further morphological investigations together with more molecular data are needed.

***Striatiguttula* S.N.Zhang, K.D.Hyde & J.K.Liu, gen. nov.**

Mycobank: MB828273

Facesoffungi: FoF 05033

**Etymology.** Name refers to the striate and guttulate ascospores.

**Description.** *Saprobic* on palms which are distributed in mangrove habitats.

**Sexual morph:** *Stromata* black, scattered to gregarious, immersed beneath host epidermis, and erumpent to superficial, with a papilla or a short to long neck, ampulliform, subglobose or conical, uni-loculate or bi-loculate, coriaceous to carbonaceous, ostiolate, periphysate, papillate, clypeate or not, glabrous or somewhat interwoven pale brown hyphae or setae, lying at apex of the neck. *Peridium* thin, composed of several pale brown to hyaline angular cells. Wall of the neck having elongated angular cells. *Hamathecium* filament thin, trabeculate pseudoparaphyses, septate, branched, anastomosing, embedded in a gelatinous matrix. *Asci* 8-spored, bitunicate, cylindrical-clavate, pedicellate, apically rounded, with an ocular chamber. *Ascospores* hyaline to brown, uniseriate to biseriate or triseriate, fusiform to ellipsoidal, 1–3-septate, constrict, the middle cells slightly swollen towards the central septa, striate, guttulate, end cells slightly paler or not, surrounded by a mucilaginous sheath. **Asexual morph:** Undetermined.

**Type species.** *Striatiguttula nypae* S.N.Zhang, K.D.Hyde & J.K.Liu.

***Striatiguttula nypae* S.N.Zhang, K.D.Hyde & J.K.Liu, sp. nov.**

Mycobank number: MB828274

Facesoffungi number: FoF 05034

Figure 3

**Etymology.** The epithet reflects the genus name of the host plant *Nypa fruticans*, from which the specimens were collected.

**Type.** THAILAND. Ranong: Ranong, on decayed rachis of *Nypa fruticans* Wurm (Arecaceae), 3 December 2016, S.N.Zhang, SNT44 (holotype: MFLU 18–1576; isotype: HKAS 97480; ex-type living culture MFLUCC 18–0265 = GZCC 18–0005).

**Description.** *Saprobic* on mangrove palm *Nypa fruticans*. **Sexual morph:** *Stromata* in vertical section 240–380  $\mu\text{m}$  high, 195–385  $\mu\text{m}$  diameter, ( $\bar{x}$  = 318.2  $\times$  289.0  $\mu\text{m}$ ,  $n$  = 15), black, scattered, gregarious, immersed beneath host epidermis, and erumpent to superficial, with a papilla or short to long neck up to 550  $\mu\text{m}$ , subglobose or conical, uni-loculate or bi-loculate, coriaceous to carbonaceous, ostiolate, periphysate, papillate and clypeate, glabrous or somewhat interwoven pale brown hyphae or with setae, lying at apex of the neck. *Peridium* 9–16  $\mu\text{m}$  thin, composed of several pale brown to hyaline angular cells, compressed and pallid inwardly. Wall of the clypeus composed of brown cells of *textura* epidermoidea and dark brown host tissue. Wall of the neck with thicker and elongated angular cells. *Hamathecium* 1–2  $\mu\text{m}$  wide, trabeculate pseudo-paraphyses, septate, branched, filamentous, anastomosing, embedded in a gelatinous matrix. *Asci* 64–145  $\times$  8–17  $\mu\text{m}$ , ( $\bar{x}$  = 106.3  $\times$  13.8  $\mu\text{m}$ ,  $n$  = 30), 8-spored, bitunicate, fissitunicate, cylindric-clavate, pedicellate, apically rounded, with an ocular chamber. *Ascospores* 18–26  $\times$  4–6  $\mu\text{m}$ , ( $\bar{x}$  = 22.2  $\times$  5.3  $\mu\text{m}$ ,  $n$  = 50), hyaline to brown, uniseriate to biseriate or triseriate, fusiform, 1–3-septate, constricted at the central septum, the upper middle cell slightly swollen towards the central septum, straight or slightly curved, striate, guttulate, end cells slightly paler, surrounded by a mucilaginous sheath.

**Asexual morph:** Undetermined.

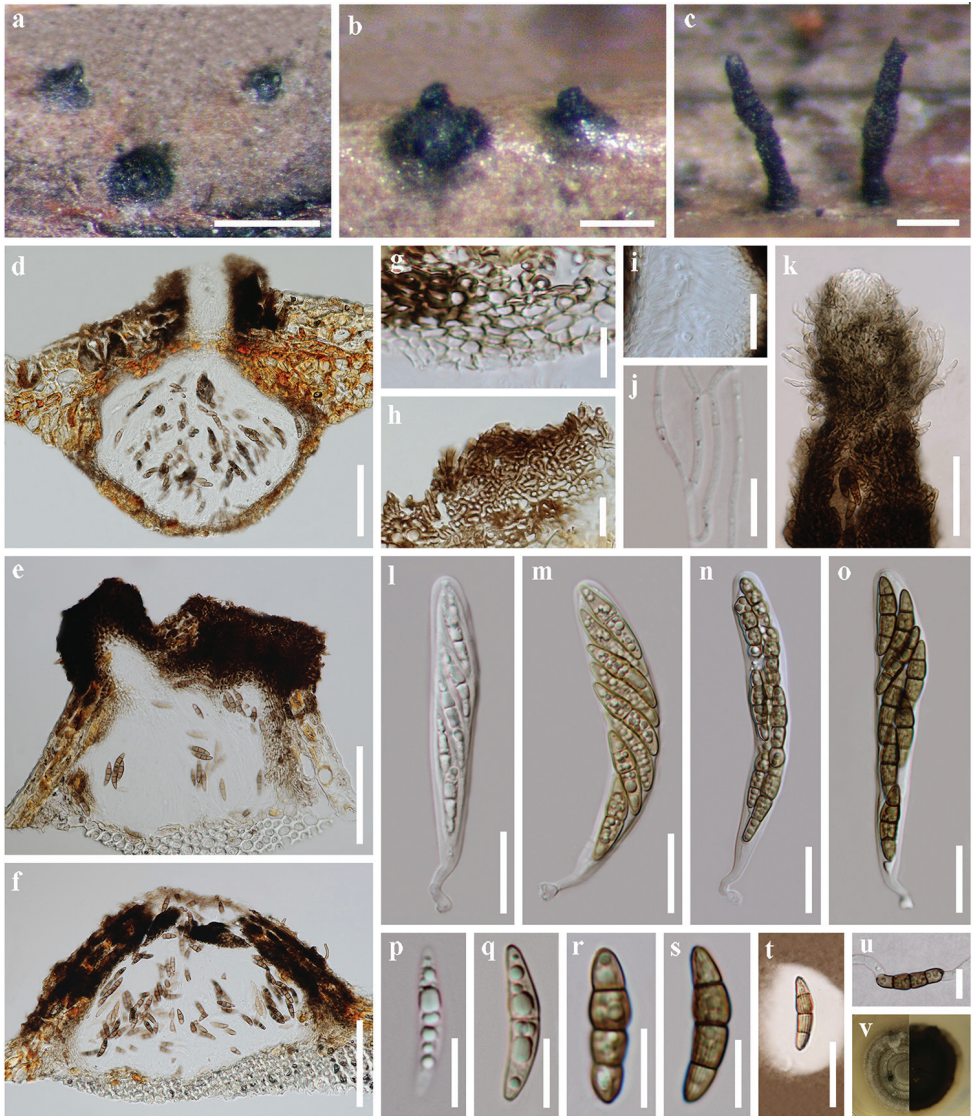
**Culture characteristics.** Colonies on PDA attaining 15 mm diam. within 21 days at 25 °C under natural light, velvety, centrally raised, greenish grey or greyish olivaceous, reverse dull green or grey olivaceous, with a margin of translucent, milky white to hyaline mycelia.

**Additional specimens examined.** Thailand. Krabi: near Pali, Mueang Krabi District, on submerged decaying rachis of *Nypa fruticans* Wurm (Arecaceae), 30 August 2017, S.N.Zhang, SNT207 (paratype: MFLU 18–1577; living culture MFLUCC 17–2517 = GZCC 18–0006); Thailand. Krabi: near Pali, Mueang Krabi District, on submerged decaying rachis of *Nypa fruticans* Wurm (Arecaceae), 30 August 2017, S.N.Zhang, SNT208 (paratype: MFLU 18–1578; living culture MFLUCC 17–2518 = GZCC 18–0007).

**Habitat and distribution.** Inhabiting Thai mangrove forests, Andaman sea (west) coastline, Thailand.

**Notes.** *Striatiguttula nypae* varies in ascomatal appearance, mostly immersed beneath the plant surface, sometimes visible as a papilla or dome-shaped area on the





**Figure 3.** *Striatiguttula nypae* (holotype MFLU 18–1576, paratype MFLU 18–1578). **a–c** Appearance of stromata on host surface **d–f** vertical section through a stroma **g** structure of peridium **h** structure of clypeus near the ostiole, composed of epidermoidea cells and host tissue **i** ostiole with periphyses **j** pseudoparaphyses **k** apex of the neck, with somewhat interwoven pale brown hyphae or setae **l–o** ascus **p–s** ascospores **t** ascospore in India ink and presenting a clear mucilaginous sheath **u** germinating ascospore **v** colony on PDA. Scale bars: 500  $\mu\text{m}$  (**a**), 200  $\mu\text{m}$  (**b, c**), 100  $\mu\text{m}$  (**d–f**), 10  $\mu\text{m}$  (**g, p–s, u**), 20  $\mu\text{m}$  (**h, i, l–o, t**), 50  $\mu\text{m}$  (**k**).

plant surface, and becomes erumpent to superficial, with a papilla or a short to long neck. The typical morphological characters of *S. nypae* are the appearance of stromata, with interwoven pale brown hyphae or setae at the apex of the neck, and the hyaline

**Table 3.** Morphological comparison of three new species to *Trematosphaeria lineolatispora*, *T. mangrovis* and *T. striataspota*.

Taxa	Ascomata		Peridium ( $\mu\text{m}$ )	Pseudoparaphyses ( $\mu\text{m}$ )	Asci ( $\mu\text{m}$ )	Ascospores		References
	Ascomata morphology	(high $\times$ diam. $\mu\text{m}$ )				Ascospores morphology	Ascospores size ( $\mu\text{m}$ )	
<i>Longicarpus striataspota</i>	Immersed, erumpent, ampulliform, subglobose or conical, CA	300–500 $\times$ 250–560	11–15	1.5	85–160 $\times$ 10–17	Fusiform, 1–3-septate, CC	24–45 $\times$ 7–8.8	This study
<i>Striatiguttula myae</i>	Immersed and erumpent to superficial, subglobose or conical, uni-loculate or bi-loculate, CA	240–380 $\times$ 195–385	9–16	1–2	64–145 $\times$ 8–17	Fusiform, 1–3-septate, CC	18–26 $\times$ 4–6	This study
<i>Striatiguttula phoenicis</i>	Immersed, erumpent, ampulliform, subglobose, uni-loculate, CB	195–580 $\times$ 135–390	10–24	1–2	89–141 $\times$ 12–18	Fusiform to ellipsoidal, 1–3-septate, CC but nearly concolorous	20–29 $\times$ 6–10	This study
<i>Trematosphaeria lineolatispora</i> K.D. Hyde	Immersed with a flattened base, conical to subglobose, clypeate, ostiolate, papillate	90–180 $\times$ 216–360	up to 25	2–4	120–204 $\times$ 14–18	Fusiform, mostly 5-septate, CC	34–48 $\times$ 7–10	Hyde 1992b
<i>Trematosphaeria mangrovis</i> Kohlm.	Semi-immersed, conical or subglobose, papillate	380–750 $\times$ 450–800	64–88	1.6–2.2	190–220 $\times$ 20–22	Broad fusiform or ellipsoidal, 3-septate, CC but no striations	30–35, 6–41 $\times$ 10–11, 8–13 (–16.5)	Kohlmeyer 1968
<i>Trematosphaeria striataspota</i> K.D. Hyde	Developing amongst the host cortical cells beneath the host epidermis, ampulliform, subglobose or conical, CA	176–355 $\times$ 352–528	42–57 (clypeus), thin-walled	0.8–2.1	99–173 $\times$ 11–23	Fusiform, 3(–6)-septate, CC	31–38 $\times$ 6–9	Hyde 1988

CA: (Characteristics A) clypeate, ostiolate, periphysate, papillate;

CB: (Characteristics B) ostiolate, periphysate, papillate;

CC: (Characteristics C) central cells larger, brown, end cells smaller and paler, ascospore wall covered in distinct longitudinal striations, and surrounded by a sheath.



to brown, 1–3-septate, fusiform ascospores, striate, guttulate, with slightly paler end cells and a mucilaginous sheath. We have compared *Striatiguttula nypae* to previously encountered species on *Nypa fruticans*, and several morphologically similar mangrove fungal species. However, the striation of ascospores can be a reliable morphological character to distinguish *Striatiguttula nypae* from *Astrosphaeriella nipicola* (Hyde and Fröhlich 1998), *A. nypae* (Hyde 1992a) and *Leptosphaeria* spp. (Spegazzini 1881, Cribb and Cribb 1955, Hyde et al. 1999, Pang et al. 2011), which are characterized by one or three septa and hyaline or brown ascospores. The presence of erumpent to superficial stromata, the number of septa and size of ascospores in *S. nypae* are also different from *Trematosphaeria* spp. (Table 3), despite being quite similar in ascospore morphology. In addition, the phylogenetic analysis showed that the three isolates of *Striatiguttula nypae* clustered together and were distinct from *S. phoenicis*.

***Striatiguttula phoenicis* S.N.Zhang, K.D.Hyde & J.K.Liu, sp. nov.**

Mycobank: MB828275

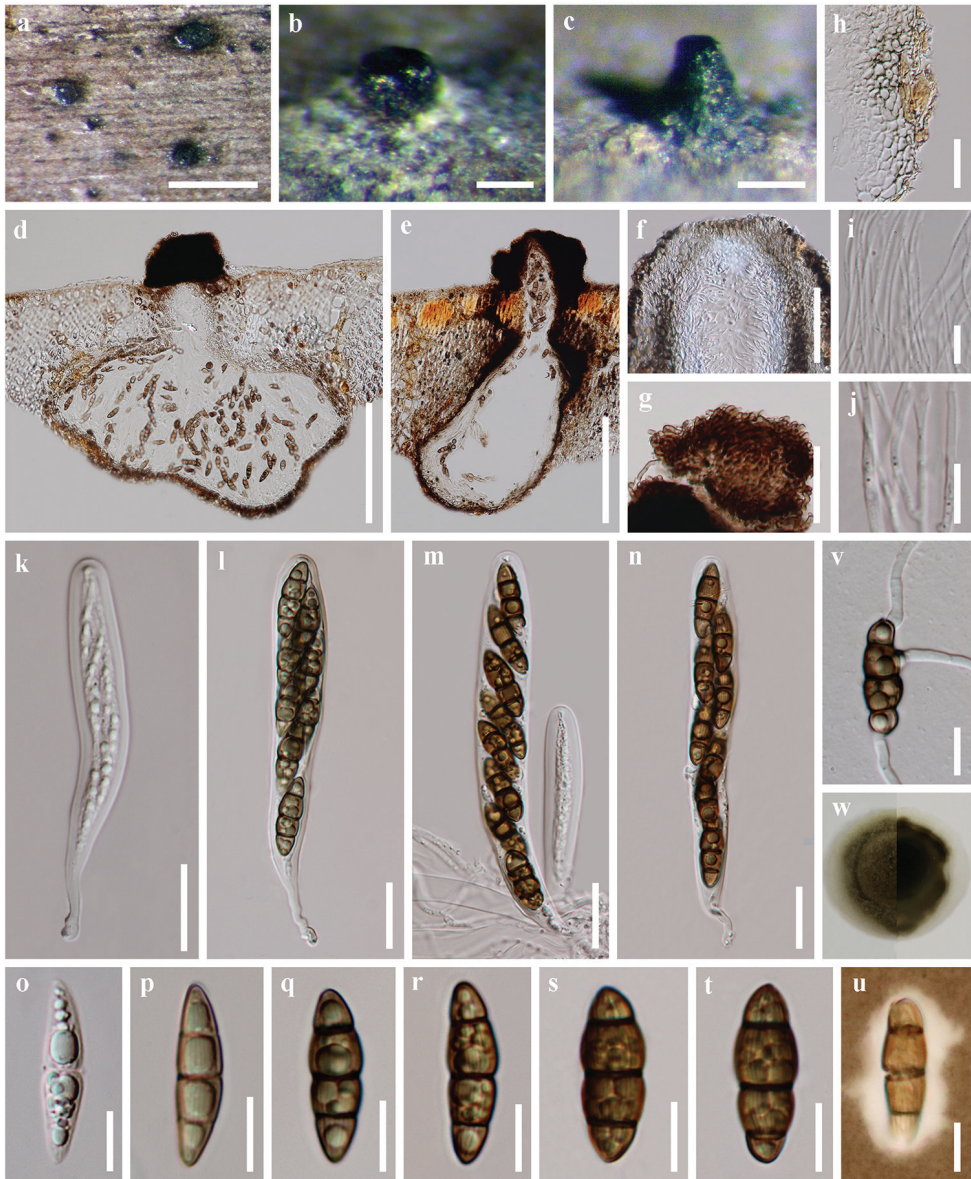
Facesoffungi: FoF 05035

Figure 4

**Etymology.** The epithet referring to the host on which the fungus was collected.

**Type.** THAILAND. Ranong: Amphoe Mueang Ranong, Tambon Ngao, on decayed rachis of *Phoenix paludosa* Roxb. (Arecaceae), 6 December 2016, S.N.Zhang, SNT51 (holotype: MFLU 18–1579; isotype: HKAS 97481; ex-type culture MFLUCC 18–0266 = GZCC 18–0008).

**Description.** *Saprobic* on mangrove date palm *Phoenix paludosa*. **Sexual morph:** *Ascomata* in vertical section 195–580 µm high, 135–390 µm diameter, ( $\bar{x}$  = 396.0 × 230.3 µm, n = 15), black, scattered, rarely gregarious, immersed, and erumpent through host epidermis by a papilla or a short neck, ampulliform, subglobose, uni-loculate, coriaceous to carbonaceous, ostiolate, periphysate, papillate, glabrous or somewhat interwoven pale brown hyphae or setae, lying around apex of the neck. *Peridium* 10–24 µm thin, composed of several pale brown to hyaline cells of *textura angularis*, compressed and pallid inwardly. Wall of the neck composed thick and elongated angular pale brown to brown cells with hyaline inner layers. *Hamathecium* of 1–2 µm wide, septate, branched, filamentous, anastomosing, trabeculate pseudoparaphyses, embedded in a gelatinous matrix. *Asci* 89–141 × 12–18 µm, ( $\bar{x}$  = 120.5 × 15.4 µm, n = 20), 8-spored, bitunicate, fissionate, cylindrical-clavate, pedicellate, apically rounded, with an ocular chamber. *Ascospores* 20–29 × 6–10 µm, ( $\bar{x}$  = 24.5 × 7.8 µm, n = 40), hyaline to brown (all cells nearly concolorous), uniseriate to biseriate, fusiform to ellipsoidal, 1–3-septate, constricted at the central septum, the upper middle cell slightly swollen and larger, straight or slightly curved, striate, guttulate, surrounded by an irregular mucilaginous sheath. **Asexual morph:** Undetermined.



**Figure 4.** *Striatiguttula phoenicis* (holotype MFLU 18–1579). **a–c** Appearance of ascoma on host surface **d, e** vertical section through an ascoma **f** ostiole **g** apex of the neck, with somewhat interwoven pale brown hyphae or setae **h** structure of peridium **i, j** pseudoparaphyses **k–n** asci **o–t** ascospores **u** ascospore in India ink and presenting a clear mucilaginous sheath **v** germinating ascospore **w** colony on PDA. Scale bars: 500  $\mu\text{m}$  (**a**), 100  $\mu\text{m}$  (**b, c**), 200  $\mu\text{m}$  (**d, e**), 50  $\mu\text{m}$  (**f, g**), 20  $\mu\text{m}$  (**h, k–n**), 10  $\mu\text{m}$  (**i, j, o–v**).

**Culture characteristics.** Colonies on PDA attaining 14 mm diam within 21 days at 25 °C under natural light, velvety, centrally raised, greenish grey or greyish olivaceous, reverse dull olivaceous or grey, with a margin of translucent, milky white to hyaline mycelium.

**Habitat and distribution.** Inhabiting Thai mangrove forests, Andaman sea (west) coastline, Thailand.

**Notes.** The fusiform to ellipsoidal, 1–3-septate ascospores of *Striatiguttula phoenicis* is similar to those of *Trematosphaeria mangrovis*, associated with submerged roots of mangrove trees. However, *Striatiguttula phoenicis* differs from *T. mangrovis* (Kohlmeyer 1968) as the latter has larger ascospores and lacks striations (Table 3). *Striatiguttula phoenicis* is morphologically different from *S. nypae* as it has ellipsoidal ascospores which are broader in width. Currently, the erumpent to superficial stromata have not been found in *S. phoenicis*. The phylogenetic analysis also confirms that they are distinct species. There are 26 noticeable nucleotide differences across the 474 nucleotides (Suppl. material 1) of ribosomal ITS sequence data (strains: MFLUCC 18–0266 vs. MFLUCC 18–0265, MFLUCC 17–2517 and MFLUCC 17–2518).

***Longicorpus* S.N.Zhang, K.D.Hyde & J.K.Liu, gen. nov.**

Mycobank: MB828276

Facesoffungi: FoF 05036

**Etymology.** Name refers to the elongated ascomata and ascospores.

**Description.** *Saprobic* on mangrove palms. **Sexual morph:** *Ascomata* black, scattered to gregarious, immersed, and erumpent through host epidermis by a papilla or a short to long neck, sometimes visible as a slightly raised, dome-shaped area, with a clypeus comprises host tissue and fungal hyphae, ampulliform, subglobose or conical, uni-loculate, coriaceous to carbonaceous, ostiolate, periphysate, papillate, glabrous or somewhat interwoven pale brown hyphae or setae. *Peridium* composing of pale brown or brown angular cells. *Hamathecium* of septate, branched, thin, anastomosing trabeculate pseudoparaphyses, embedded in a gelatinous matrix. *Asci* 8-spored, bitunicate, cylindric-clavate, pedicellate, apically rounded, with an ocular chamber. *Ascospores* uniseriate to biseriate, hyaline to brown, fusiform, 1–3-septate, the upper middle cell slightly swollen towards the central septum, and the end cells paler and smaller, striate, guttulate, surrounded by a mucilaginous sheath. **Asexual morph:** Undetermined.

**Type species.** *Longicorpus striataspora* (K.D.Hyde) S.N.Zhang, K.D.Hyde & J.K.Liu.

**Notes.** *Longicorpus* differs from *Striatiguttula* in having elongate, fusiform ascospores with relatively larger middle cells and paler end cells (Figures 3–5). Multi-gene phylogeny also strongly supports the establishment of two genera. *Longicorpus* is sister to *Striatiguttula* but forms a distinct phylogenetic sub-clade (Figure 1). There are noticeable differences (nucleotide substitutions) at specific positions in the large subunit nuclear ribosomal DNA: 51, 428, 436, 465 (T substituted by C); 53, 55, 102, 153, 163, 166, 251, 367, 369, 427, 435, 440, 446, 448, 466, 504, 550, 654 (C substituted by T); 130 (G substituted by A); 362, 406 (G substituted by T); 370 (C substituted by A); 547 (A substituted by C).

***Longicorpus striataspora* (K.D.Hyde) S.N.Zhang, K.D.Hyde & J.K.Liu, comb. nov.**

MycoBank: MB828277

Facesoffungi: FoF 05037

Figure 5

*Trematosphaeria striataspora* K.D.Hyde, Botanical Journal of the Linnean Society 98(2): 142. 1988.

*Astrosphaeriella striataspora* (K.D.Hyde) K.D.Hyde, Botanical Journal of the Linnean Society 110(2): 97. 1992. Type: North Sumatra. K.D.Hyde (holotype: IMI 312390).

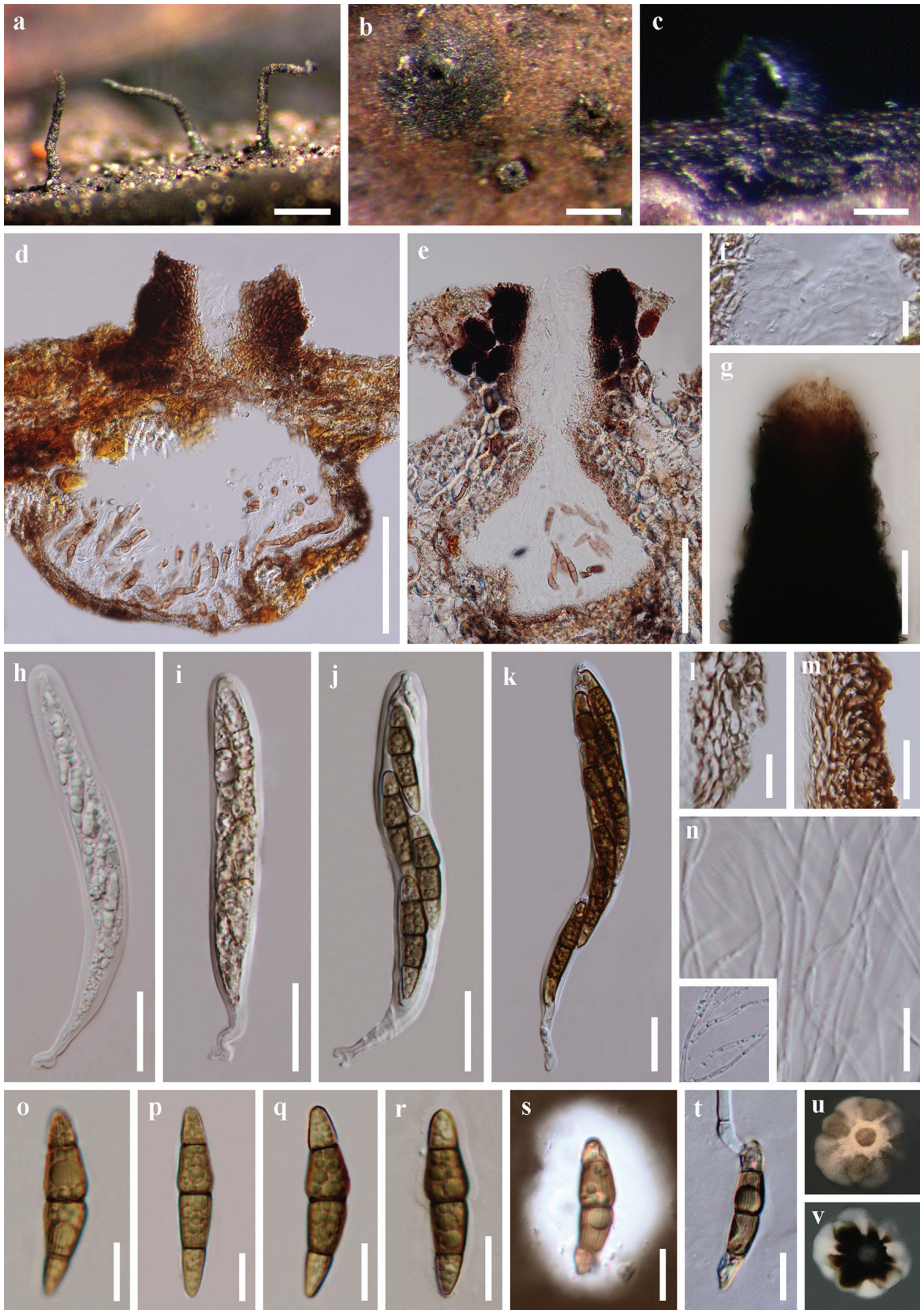
**Epitype.** THAILAND. Ranong: Ranong, on decayed rachis of *Nypa fruticans* Wurm (Arecaceae), 6 December 2016, S.N. Zhang, SNT93 (epitype designated here: MFLU 18–1580; epi-isotype designated here: HKAS 97479; ex-epitype living culture MFLUCC 18–0267 = GZCC 18–0009).

**Description.** *Saprobic* on mangrove palms. **Sexual morph:** *Ascomata* in vertical section (including short papilla) 300–500 µm high, 230–560 µm diameter, ( $\bar{x}$  = 405.3 × 376.6 µm, n = 15), long neck up to 1285 µm, black, scattered to gregarious, immersed, and erumpent through host epidermis by a papilla or a short to long neck, sometimes visible as a slightly raised, dome-shaped area, with a clypeus comprises host tissue and fungal hyphae, ampulliform, subglobose or conical, uni-loculate, coriaceous to carbonaceous, ostiolate, periphysate, papillate, glabrous or somewhat interwoven pale brown hyphae or setae, lying at apex of the neck. *Peridium* 11–15 µm wide, composing of brown to pale brown angular cells, thicker at the rim towards the apex. *Hamathecium* comprising up to 1.5 µm wide, septate, branched, filamentous, trabeculate, anastomosing pseudoparaphyses, embedded in a gelatinous matrix. *Asci* 85–160 × 10–17 µm ( $\bar{x}$  = 122.7 × 13.7 µm, n = 22), 8-spored, bitunicate, cylindrical-clavate, pedicellate, apically rounded, with an ocular chamber. *Ascospores* 24–45 × 7–8.8 µm, ( $\bar{x}$  = 34.2 × 7 µm, n = 40), uniseriate to biseriate, hyaline to brown, fusiform, 1–3-septate, the upper middle cell slightly swollen towards the central septate, middle cells larger and longer, end cells paler and smaller, straight or slightly curved, striate, guttulate, surrounded by a mucilaginous sheath. **Asexual morph:** Undetermined.

**Culture characteristics.** Colonies on PDA attaining 12 mm diameter within 21 days at 25 °C under natural light, velvety, centrally raised, irregular to circular in shape, greenish grey and mixed with milky white mycelium at the edge of a colony, the reverse dull green or grey olivaceous.

**Additional specimens examined.** Thailand. Chanthaburi, 12°26'43"N, 102°15'47"E, on rachis of *Phoenix paludosa* Roxb. (Arecaceae), immersed mangrove mud and water, 25 April 2017, S.N.Zhang, SNT130 (epi-paratype MFLU 18–1581; living culture MFLUCC 18–0268 = GZCC 18–0010); Thailand. Krabi, near Pali, on decayed rachis of *Nypa fruticans* Wurm (Arecaceae), immersed mangrove mud and water, 30 August 2017, S.N.Zhang, SNT195 (epi-paratype MFLU 18–1582; living culture MFLUCC 17–2515 = GZCC 18–0011; MFLUCC 17–2516 = GZCC 18–0012).





**Figure 5.** *Longicorpus striataspona* (epitype MFLU 18–1580, epi-paratype MFLU 18–1582). **a, b** Appearance of ascoma on host surface **c–e** vertical section through an ascoma, with a clypeus near the ostiole **f** ostiole with periphyses **g** apex of the neck, with somewhat interwoven pale brown hyphae or setae **h–k** ascus **l** peridium in vertical section **m** vertical section of the neck, with thicker angular cells **n** pseudoparaphyses **o–r** ascospores **s** ascospore in India ink and presenting a clear mucilaginous sheath **t** germinating ascospore **u, v** Colony on PDA. Scale bars: 500  $\mu\text{m}$  (**a**), 200  $\mu\text{m}$  (**b**), 100  $\mu\text{m}$  (**c–e**), 10  $\mu\text{m}$  (**f, l, n–t**), 50  $\mu\text{m}$  (**g**), 20  $\mu\text{m}$  (**h–k, m**).

**Habitat and distribution.** Inhabiting in Thai mangrove forests, the Andaman sea (west) coastline and the Gulf of Thailand (east).

**Notes.** *Longicorpus striataspora* was found on two mangrove palm species, *Nypa fruticans* and *Phoenix paludosa*. The typical characteristics of *L. striataspora* are the deeply immersed, carbonaceous ascomata with a long neck, and the striate, guttulate, fusiform, 1–3-septate ascospores, with larger middle cells and relatively smaller and paler end cells, surrounded by a mucilaginous sheath. However, such characteristics are similar to *Trematosphaeria* spp. (Table 3), and match with *Trematosphaeria striataspora* (Hyde 1988), the holotype collected from intertidal wood of *Nypa fruticans* in North Sumatra. *Trematosphaeria striataspora* was later accommodated in *Astrosphaeriella* Syd. & P. Syd. (Hyde 1992a) with proposals for recollection and further phylogenetic studies (Liu et al. 2011b, Phookamsak et al. 2015). We have compared the fresh collections of *Longicorpus striataspora* with the type material of *Trematosphaeria striataspora*, and concluded that the two are identical in morphology. On the other hand, the genus *Trematosphaeria* Fuckel has been assigned to the family Trematosphaeriaceae K.D. Hyde, Y. Zhang ter, Suetrong & E.B.G. Jones, based on molecular data of its type species *T. pertusa* Fuckel. Therefore, we follow Ariyawansa et al. (2014) and designate an epitype for *Longicorpus striataspora* in this study.

## Discussion

A novel pleosporalean family, Striatiguttulaceae is introduced herein, which has been compared to several morphologically similar genera and species recovered from mangroves. This study introduces three novel species including an epitypification. The use of divergence times as an additional evidence for ranking taxa (especially in higher taxa ranking) has become possible and several studies have been carried out across different fungal groups (Phukhamsakda et al. 2016, Samarakoon et al. 2016, Divakar et al. 2017, Hongsanan et al. 2017, Hyde et al. 2017, Liu et al. 2017, Zhao et al. 2017). To better understand the placement of Striatiguttulaceae, divergence time was also estimated and this study supports taxonomic schemes proposed earlier. The recent study of ranking a family with divergence time estimates is Liu et al. (2018), who introduced Lentimurisporaceae, a new pleosporalean family. We have recovered essentially similar phylogenetic topology, and in an extensive dataset that included berklesmium-like taxa (referred to Liu et al. 2018), phylogenies generated were also topologically identical to those recovered herein (Figure 1). The monotypic family Ligninsphaeriaceae is sister to Striatiguttulaceae, and berklesmium-like taxa are close to Aquasubmersaceae, Hermatomycetaceae and Salsuginaceae respectively. In this study, the ages of most families in Pleosporales, especially those positioned outside the two suborders were estimated in our divergence time analysis, and the results are comparable to other studies. However, Ligninsphaeriaceae, Pseudoastrosphaeriellaceae and Testudinaceae have relatively younger stem ages than that in Liu et al. (2017), presumably due to different taxa sampling in our phylogeny.



The nature of the pseudoparaphyses (*sensu* Liew et al. 2000) is worth considering here and may provide evidence for separate lineages. The family Striatiguttulaceae, currently with three species, have trabeculate pseudoparaphyses, but also appearing septate. Phylogenetically closely related families of Ligninsphaeriaceae and Pseudoastrospheariellaceae are characterized by cellular pseudoparaphyses and trabeculate pseudoparaphyses respectively.

Considering the ecology of these Striatiguttulaceae species in relation to the mangrove ecosystem, salinity may be an important contributor to their presence. Loilong et al. (2012) have compared fungal community from *Nypa fruticans* at different salinities, and found freshwater species in lower salinity and marine species at higher salinity. Although no salinity was measured during our collections, *Longicorpus striataspora*, *Striatiguttula nypae* and *S. phoenicis* can be considered as manglicolous, because they are found from decayed rachides/petioles of palms, which are perennials submerged in soft mangrove mud and salty water, and well adapted to the varying salinity in mangroves by tidal water. On the other hand, their ascospores have mucilaginous sheaths and lack elaborate appendages, which are also typical characteristics of most mangrove fungi (Jones 2000).

## Acknowledgements

We are grateful to the grant the Thailand Research Fund for supporting collection and research facilities (Grant No. RSA5980068). Jian-Kui Liu thanks the National Natural Science Foundation of China (NSFC 31600032) and Science and Technology Foundation of Guizhou Province (LH [2015]7061). Kevin D. Hyde would like to thank the Thailand Research Grants (No. RDG6130001 and No. 60201000201). The authors would like to thank the staff of Ngao Mangrove Forest Research Center for their assistance in the sample's collection. We are also grateful to Dr. Shaun Pennycook (Manaaki Whenua Landcare Research, New Zealand) for advising on fungal nomenclature. Ning-Guo Liu is acknowledged for assisting in molecular experiments. We also thank the University of Mauritius for its support.

## References

- Ariyawansa HA, Hawksworth DL, Hyde KD, Jones EBG, Maharachchikumbura SSN, Manamgoda DS, Thambugala KM, Udayanga D, Camporesi Erio, Daranagama A, Jayawardena R, Liu JK, McKenzie EHC, Phookamsak R, Senanayake IC, Shivas RG, Tian Q, Xu JC (2014) Epitypification and neotypification: guidelines with appropriate and inappropriate examples. *Fungal Diversity* 69: 57–79. <https://doi.org/10.1007/s13225-014-0315-4>
- Beimforde C, Feldberg K, Nylinder S, Rikkinen J, Tuovila H, Dörfelt H, Gube M, Jackson DJ, Reitner J, Seyfullah LJ, Schmidt AR (2014) Estimating the Phanerozoic history of the Ascomycota lineages: combining fossil and molecular data. *Molecular Phylogenetics and Evolution* 78: 386–398. <https://doi.org/10.1016/j.ympev.2014.04.024>

- Berbee ML, Taylor JW (2010) Dating the molecular clock in fungi – how close are we? *Fungal Biology Reviews* 24: 1–16. <https://doi.org/10.1016/j.fbr.2010.03.001>
- Choi YW, Hyde KD, Ho W (1999) Single spore isolation of fungi. *Fungal Diversity* 3: 29–38.
- Cribb AB, Cribb JW (1955) Marine fungi from Queensland-1. University Queensland Papers, Department of Botany 3: 77–81.
- Crous PW, Gams W, Stalpers JA, Robert V, Stegehuis G (2004) MycoBank: an online initiative to launch mycology into the 21<sup>st</sup> century. *Studies in Mycology* 50(1): 19–22.
- Divakar PK, Crespo A, Kraichak E, Leavitt SD, Singh G, Schmitt I, Lumbsch HT (2017) Using a temporal phylogenetic method to harmonize family- and genus-level classification in the largest clade of lichen-forming fungi. *Fungal Diversity* 84: 101–117. <https://doi.org/10.1007/s13225-017-0379-z>
- Drummond AJ, Rambaut A (2007) BEAST: Bayesian evolutionary analysis by sampling trees. *BMC Evolutionary Biology* 7: 214. <https://doi.org/10.1186/1471-2148-7-214>
- Drummond AJ, Suchard MA, Xie D, Rambaut A (2012) Bayesian phylogenetics with BEAUti and the BEAST 1.7. *Molecular biology and evolution* 29(8): 1969–1973. <https://doi.org/10.1093/molbev/mss075>
- Elliott ML, Des Jardin EAD, O'Donnell K, Geiser DM, Harrison NA, Broschat TK (2010) *Fusarium oxysporum* f. sp. *palmarum*, a novel forma specialis causing a lethal disease of *Syagrus romanzoffiana* and *Washingtonia robusta* in Florida. *Plant Disease* 94: 31–38. <https://doi.org/10.1094/PDIS-94-1-0031>
- Fröhlich J, Hyde KD, Guest DI (1997) Fungi associated with leaf spots of palms in north Queensland, Australia. *Mycological Research* 101(6): 721–732. <https://doi.org/10.1017/S095375629600322X>
- Fröhlich J, Hyde KD (1999) Biodiversity of palm fungi in the tropics: are global fungal diversity estimates realistic? *Biodiversity and Conservation* 8: 977–1004. <https://doi.org/10.1023/A:1008895913857>
- Fröhlich J, Hyde KD (2000) Palm microfungi. *Fungal Diversity Press*, 393 pp.
- Fröhlich J, Hyde KD, Petrini O (2000) Endophytic fungi associated with palms. *Mycological Research* 104(10): 1202–1212. <https://doi.org/10.1017/S095375620000263X>
- Goh TK, Hyde KD (1996) A new species of *Nectria* on *Mauritia flexuosa* (Arecaceae) in Ecuador and a key to *Nectria* and allied genera on palms. *Mycoscience* 37: 277–282. <https://doi.org/10.1007/BF02461298>
- Gueidan C, Ruibal C, De Hoog GS, Schneider H (2011) Rock-inhabiting fungi originated during periods of dry climate in the late Devonian and middle Triassic. *Fungal biology* 115: 987–996. <https://doi.org/10.1016/j.funbio.2011.04.002>
- Hall TA (1999) BioEdit: a user-friendly biological sequence alignment editor and analysis program for Windows 95/98/NT. *Nucleic Acids Symposium Series* 41:95–98.
- Hashimoto A, Matsumura M, Hirayama K, Tanaka K (2017) Revision of Lophiotremataceae (*Pleosporales*, *Dothideomycetes*): Aquasubmersaceae, Cryptocoryneaceae, and Hermatomycetaceae fam. nov. *Persoonia* 39: 51–73. <https://doi.org/10.3767/persoonia.2017.39.03>
- Hawksworth DL (1991) The fungal dimension of biodiversity: magnitude, significance, and conservation. *Mycological Research* 95(6): 641–655. [https://doi.org/10.1016/S0953-7562\(09\)80810-1](https://doi.org/10.1016/S0953-7562(09)80810-1)

- Hidayat I, Jeewon R, To-anua C, Hyde KD (2006) The genus *Oxydothis*: new palmicolous taxa and phylogenetic relationships within the *Xylariales*. *Fungal Diversity* 23: 159–179.
- Hillis DM, Bull JJ (1993) An empirical test of bootstrapping as a method for assessing confidence in phylogenetic analysis. *Systematic Biology* 42(2): 182–192. <https://doi.org/10.1093/sysbio/42.2.182>
- Hongsanan S, Sánchez-Ramírez S, Crous PW, Ariyawansa HA, Zhao RL, Hyde KD (2016) The evolution of fungal epiphytes. *Mycosphere* 7(11): 1690–1712. <https://doi.org/10.5943/mycosphere/7/11/6>
- Hongsanan S, Maharachchikumbura SS, Hyde KD, Samarakoon MC, Jeewon R, Zhao Q, Al-Sadi AM, Bahkali AH (2017) An updated phylogeny of Sordariomycetes based on phylogenetic and molecular clock evidence. *Fungal Diversity* 84: 25–41. <https://doi.org/10.1007/s13225-017-0384-2>
- Hyde KD, Goh TK, Lu BS, Alias SA (1999) Eleven new intertidal fungi from *Nypa fruticans*. *Mycological Research* 103(11): 1409–1422. <https://doi.org/10.1017/S0953756299008667>
- Hyde KD, Sarma VV (2006) Biodiversity and ecological observations on filamentous fungi of mangrove palm *Nypa fruticans* Wurumb (Liliopsida–Arecales) along the Tutong River, Brunei. *Indian Journal of Marine Sciences* 35(4): 297–307.
- Hyde KD, Chaiwan N, Norphanphoun C, Boonmee S, Camporesi E, Chethana KWT, Dayarathne MC, de Silva NI, Dissanayake AJ, Ekanayaka AH, Hongsanan S, Huang SK, Jayasiri SC, Jayawardena RS, Jiang HB, Karunarathna A, Lin CG, Liu JK, Liu NG, Lu YZ, Luo ZL, Maharachchikumbura SSN, Manawasinghe IS, Pem D, Perera RH, Phukhamsakda C, Samarakoon MC, Senwana C, Shang QJ, Tennakoon DS, Thambugala KM, Tibpromma S, Wanasinghe DN, Xiao YP, Yang J, Zeng XY, Zhang JF, Zhang SN, Bulgakov TS, Bhat DJ, Cheewangkoon R, Goh TK, Jones EBG, Kang JC, Jeewon R, Liu ZY, Lumyong S, Kuo CH, Mckenzie EHC, Wen TC, Yan JY, Zhao Q (2018) *Mycosphere* notes 169–224. *Mycosphere* 9(2): 271–430. <https://doi.org/10.5943/mycosphere/9/2/8>
- Hyde KD (1992a) Fungi from decaying intertidal fronds of *Nypa fruticans*, including three new genera and four new species. *Botanical Journal of the Linnean Society* 110: 95–110. <https://doi.org/10.1111/j.1095-8339.1992.tb00284.x>
- Hyde KD (1992b) Intertidal mangrove fungi from the west coast of Mexico, including one new genus and two new species. *Mycological Research* 96(1): 25–30. [https://doi.org/10.1016/S0953-7562\(09\)80992-1](https://doi.org/10.1016/S0953-7562(09)80992-1)
- Hyde KD (1988) Studies on the tropical marine fungi of Brunei. *Botanical Journal of the Linnean Society* 98: 135–151. <https://doi.org/10.1111/j.1095-8339.1988.tb01700.x>
- Hyde KD, Fröhlich J (1998) Fungi from palms XXXVII. The genus *Astrosphaeriella*, including ten new species. *Sydowia* 50(1): 81–132.
- Hyde KD, Cannon PF (1999) Fungi causing tar spots on palms. *Mycological Papers* 175: 1–114.
- Hyde KD, Alias SA (2000) Biodiversity and distribution of fungi associated with decomposing *Nypa fruticans*. *Biodiversity and Conservation* 9: 393–402. <https://doi.org/10.1023/A:1008911121774>
- Hyde KD, Taylor JE, Fröhlich J (2000) Genera of Ascomycetes from palm. *Fungal Diversity Press*, 1–247.

- Hyde KD, Bussaban B, Paulus B, Crous PW, Lee S, McKenzie EHC, Photita W, Lumyong S (2007) Diversity of saprobic microfungi. *Biodiversity and Conservation* 16: 7–35. <https://doi.org/10.1007/s10531-006-9119-5>
- Hyde KD, Soyong K (2008) The fungal endophyte dilemma. *Fungal Diversity* 33: 163–173.
- Hyde KD, Maharachchikumbura SSN, Hongsanan S, Samarakoon MC, Lücking R, Pem D, Harishchandra D, Jeewon R, Zhao RL, Xu JC (2017) The ranking of fungi: a tribute to David L. Hawksworth on his 70<sup>th</sup> birthday. *Fungal Diversity* 84: 1–23. <https://doi.org/10.1007/s13225-017-0383-3>
- Jayasiri SC, Hyde KD, Ariyawansa HA, Bhat J, Buyck B, Cai L, Dai YC, Abd-Elsalam KA, Ertz D, Hidayat I, Jeewon R, Jones EBG, Bahkali AH, Karunaratna SC, Liu JK, Luangsa-ard JJ, Lumbsch HT, Maharachchikumbura SSN, McKenzie EHC, Moncalvo JM, Ghobad-Nejhad M, Nilsson H, Pang KL, Pereira OL, Phillips AJL, Raspé O, Rollins AW, Romero AI, Etayo J, Selçuk F, Stephenson SL, Suetrong S, Taylor JE, Tsui CKM, Vizzini A, Abdel-Wahab MA, Wen TC, Boonmee S, Dai DQ, Daranagama DA, Dissanayake AJ, Ekanayaka AH, Fryar SC, Hongsanan S, Jayawardena RS, Li WJ, Perera RH, Phookamsak R, de Silva NI, Thambugala KM, Tian Q, Wijayawardene NN, Zhao RL, Zhao Q, Kang JC, Promputtha I (2015) The Faces of Fungi database: fungal names linked with morphology, phylogeny and human impacts. *Fungal Diversity* 74: 3–18. <https://doi.org/10.1007/s13225-015-0351-8>
- Jeewon R, Hyde KD (2016) Establishing species boundaries and new taxa among fungi: recommendations to resolve taxonomic ambiguities. *Mycosphere* 7(11): 1669–1677. <https://doi.org/10.5943/mycosphere/7/11/4>
- Jones EBG, Hyde KD (1988) Methods for the study of mangrove marine fungi from the mangroves. In: Agate AD, Subramanian CV, Vannucci M (Eds) *Mangrove microbiology. Role of Microorganisms in Nutrient Cycling of Mangrove Soils and Waters*. UNDP/UNESCO, New Delhi, 9–27.
- Jones EBG (2000) Marine fungi: some factors influencing biodiversity. *Fungal Diversity* 4: 53–73.
- Katoh K, Standley DM (2013) MAFFT multiple sequence alignment software version 7: improvements in performance and usability. *Molecular Biology and Evolution* 30(4): 772–780. <https://doi.org/10.1093/molbev/mst010>
- Kohlmeyer J (1968) A new *Trematosphaeria* from roots of *Rhizophora racemosa*. *Mycopathologia et Mycologia Applicata* 34: 1–5. <https://doi.org/10.1007/BF02050837>
- Konta S, Hongsanan S, Phillips AJL, Jones EBG, Boonmee S, Hyde KD (2016a) Botryosphaeriaceae from palms in Thailand II – two new species of *Neodeightonia*, *N. rattanica* and *N. rattanicola* from *Calamus* (rattan palm). *Mycosphere* 7(7): 950–961. <https://doi.org/10.5943/mycosphere/si/1b/6>
- Konta S, Hongsanan S, Tibpromma S, Thongbai B, Maharachchikumbura SSN, Bahkali AH, Hyde KD, Boonmee S (2016b) An advance in the endophyte story: *Oxydothidaceae* fam. nov. with six new species of *Oxydothis*. *Mycosphere* 7(9): 1425–1446. <https://doi.org/10.5943/mycosphere/7/9/15>
- Konta S, Phillips AJL, Bahkali AH, Jones EBG, Eungwanichayapant DP, Hyde KD, Boonmee S (2016c) Botryosphaeriaceae from palms in Thailand – *Barriopsis archontophoenicis* sp. nov, from *Archontophoenix alexandrae*. *Mycosphere* (special issue): 921–932.

- Konta S, Hongsanan S, Eungwanichayapant PD, Liu JK, Jeewon R, Hyde KD, Maharachchikumbura SSN, Boonmee S (2017) *Leptosorella* (Leptosorellaceae fam. nov.) and *Linocarpon* and *Neolinocarpon* (Linocarpaceae fam. nov.) are accommodated in Chaetosphaeriales. *Mycosphere* 8(10): 1943–1974. <https://doi.org/10.5943/mycosphere/8/10/16>
- Larget B, Simon DL (1999) Markov chain Monte Carlo algorithms for the Bayesian analysis of phylogenetic trees. *Molecular Biology and Evolution* 16(6): 750–759. <https://doi.org/10.1093/oxfordjournals.molbev.a026160>
- Liew ECY, Aptroot A, Hyde KD (2000) Phylogenetic significance of the pseudoparaphyses in Loculoascomycete taxonomy. *Molecular Phylogeny and Evolution* 16(3): 392–402. <https://doi.org/10.1006/mpev.2000.0801>
- Liu JK, Chomnunti P, Cai L, Phookamsak R, Chukeatirote E, Jones EBG, Moslem M, Hyde KD (2010) Phylogeny and morphology of *Neodeightonia palmicola* sp. nov. from palms. *Sydowia* 62(2): 261–276.
- Liu JK, Jones EBG, Chukeatirote E, Bahkali AH, Hyde KD (2011a) *Lignincola conchicola* from palms with a key to the species of *Lignincola*. *Mycotaxon* 117: 343–349. <https://doi.org/10.5248/117.343>
- Liu JK, Phookamsak R, Jones EBG, Zhang Y, Ko-Ko TW, Hu HL, Boonmee S, Doilom M, Chukeatirote E, Bahkali AH, Wang Y, Hyde KD (2011b) *Astrosphaeriella* is polyphyletic, with species in *Fissuroma* gen. nov., and *Neoastrosphaeriella* gen. nov. *Fungal Diversity* 51: 135–154. <https://doi.org/10.1007/s13225-011-0142-9>
- Liu JK, Phookamsak R, Doilom M, Wikee S, Li YM, Ariyawansa H, Boonmee S, Chomnunti P, Dai DQ, Bhat JD, Romero AI, Zhuang WY, Monkai J, Jones EBG, Chukeatirote E, Ko Ko TW, Zhao YC, Wang Y, Hyde KD (2012) Towards a natural classification of *Botryosphaeriales*. *Fungal Diversity* 57: 149–210. <https://doi.org/10.1007/s13225-012-0207-4>
- Liu JK, Phookamsak R, Dai DQ, Tanaka K, Jones EBG, Xu JC, Chukeatirote E, Hyde KD (2014) Roussoellaceae, a new pleosporalean family to accommodate the genera *Neoroussoella* gen. nov., *Roussoella* and *Roussoellopsis*. *Phytotaxa* 181(1): 1–33. <https://doi.org/10.11646/phytotaxa.181.1.1>
- Liu JK, Hyde KD, Jeewon R, Phillips AJL, Maharachchikumbura SSN, Ryberg M, Liu ZY, Zhao Q (2017) Ranking higher taxa using divergence times: a case study in Dothideomycetes. *Fungal Diversity* 84: 75–99. <https://doi.org/10.1007/s13225-017-0385-1>
- Liu NG, Lin CG, Liu JK, Samarakoon MC, Hongsanan S, Bhat DJ, Hyde KD, McKenzie EHC, Jumpathong J (2018) Lentimurisporaceae, a new Pleosporalean family with divergence times estimates. *Cryptogamie, Mycologie* 39(2): 259–282. <https://doi.org/10.7872/crym/v39.iss2.2018.259>
- Liu YJ, Whelen S, Hall BD (1999) Phylogenetic relationships among ascomycetes: evidence from an RNA polymerase II subunit. *Molecular Biology and Evolution* 16(12): 1799–1808. <https://doi.org/10.1093/oxfordjournals.molbev.a026092>
- Loilong A, Sakayaroj J, Rungjindamai N, Choeyklin R, Jones EBG (2012) Biodiversity of fungi on the palm *Nypa fruticans*. In: Jones EBG, Pang KL (Eds) *Marine Fungi: and Fungal-like Organisms*, De Gruyter, Berlin, 273–290. <https://doi.org/10.1515/9783110264067.273>
- Mahmoud FM, Krimi Z, Maciá-Vicente JG, Errahmani MB, Lopez-Llorca LV (2017) Endophytic fungi associated with roots of date palm (*Phoenix dactylifera*) in coastal dunes. *Revista Iberoamericana de Micología* 34:116–120. <https://doi.org/10.1016/j.riam.2016.06.007>

- Miller MA, Pfeiffer W, Schwartz T (2010) Creating the CIPRES Science Gateway for inference of large phylogenetic trees. In: Proceedings of the Gateway Computing Environments Workshop (GCE) 2010, New Orleans, Louisiana, 1–8. <https://doi.org/10.1109/GCE.2010.5676129>
- Mindell RA, Stockey RA, Beard G, Currah RS (2007) *Margaretbarromyces dictyosporus* gen. sp. nov.: a permineralized corticolous ascomycete from the Eocene of Vancouver Island, British Columbia. Mycological Research III: 680–684. <https://doi.org/10.1016/j.mycres.2007.03.010>
- Mohammadi H (2014) *Phaeoacremonium* spp. and *Botryosphaeriaceae* spp. associated with date palm (*Phoenix dactylifera* L.) decline in Iran. Journal of Phytopathology 162: 575–581. <https://doi.org/10.1111/jph.12229>
- Nylander JAA (2004) MrModeltest v2. Program distributed by the author. Evolutionary Biology Centre, Uppsala University.
- Pang KL, Jheng JS, Jones EBG (2011) Marine mangrove fungi of Taiwan. National Taiwan Ocean University
- Pérez-Ortega S, Garrido-Benavent I, Grube M, Olmo R, de los Ríos A (2016) Hidden diversity of marine borderline lichens and a new order of fungi: *Collemopsidiales* (*Dothideomyceta*). Fungal Diversity 80: 285–300. <https://doi.org/10.1007/s13225-016-0361-1>
- Phookamsak R, Norphanphoun C, Tanaka K, Dai DQ, Luo ZL, Liu JK, Su HY, Bhat DJ, Bahkali AH, Mortimer PE, Xu JC, Hyde KD (2015) Towards a natural classification of *Astrosphaeriella*-like species; introducing *Astrosphaeriellaceae* and *Pseudoastrosphaeriellaceae* fam. nov. and *Astrosphaeriellopsis*, gen. nov. Fungal Diversity 74: 143–197. <https://doi.org/10.1007/s13225-015-0352-7>
- Phukhamsakda C, Hongsanan S, Ryberg M, Ariyawansa HA, Chomnunti P, Bahkali AH, Hyde KD (2016) The evolution of Massarineae with Longipedicellataceae fam. nov. Mycosphere 7(11): 1713–1731. <https://doi.org/10.5943/mycosphere/7/11/7>
- Pilantanapak A, Jones EBG, Eaton RA (2005) Marine fungi on *Nypa fruticans* in Thailand. Botanica Marina 48: 365–373. <https://doi.org/10.1515/bot.2005.049>
- Pinnoi A, Jones EBG, McKenzie EHC, Hyde KD (2003) Aquatic fungi from peat swamp palms: *Unisetosphaeria penguinoides* gen. et sp. nov., and three new *Dactylaria* species. Mycoscience 44: 377–382. <https://doi.org/10.1007/S10267-003-0124-1>
- Pinnoi A, Lumyong S, Hyde KD, Jones EBG (2006) Biodiversity of fungi on the palm *Eleiodoxa conferta* in Sirindhorn peat swamp forest, Narathiwat, Thailand. Fungal Diversity 22: 205–218.
- Pinruan A, Pinnoi A, Hyde KD, Jones EBG (2014) Tropical peat swamp fungi with special reference to palms. In: Jones EBG, Hyde KD, Pang KL (Eds) Freshwater Fungi: and Fungal-like Organisms, Dee Gruyter, Berlin, 371–386. <https://doi.org/10.1515/9783110333480.371>
- Pinruan U, Jones EBG, Hyde KD (2002) Aquatic fungi from peat swamp palms: *Jahnula appendiculata* sp. nov. Sydowia 54(2): 242–247.
- Pinruan U, Hyde KD, Lumyong S, McKenzie EHC, Jones EBG (2007) Occurrence of fungi on tissues of the peat swamp palm *Licuala longicalycata*. Fungal Diversity 25: 157–173.
- Pinruan U, Sakayaroj J, Hyde KD, Jones EBG (2008) *Thailandiomyces bisetulosus* gen. et sp. nov. (*Diaporthales*, *Sordariomycetidae*, *Sordariomycetes*) and its anamorph *Craspedodidymum*, is described based on nuclear SSU and LSU rDNA sequences. Fungal Diversity 29: 89–98.



- Pinruan U, Rungjindamai N, Choeyklin R, Lumyong S, Hyde KD, Jones EBG (2010a) Occurrence and diversity of basidiomycetous endophytes from the oil palm, *Elaeis guineensis* in Thailand. *Fungal Diversity* 41: 71–88. <https://doi.org/10.1007/s13225-010-0029-1>
- Pinruan U, Rungjindamai N, Sakayaroj J, Lumyong S, Hyde KD, Jones EBG (2010b) *Baipadisphaeria* gen. nov., a freshwater ascomycete (Hypocreales, Sordariomycetes) from decaying palm leaves in Thailand. *Mycosphere* 1: 53–63.
- Prieto M, Wedin M (2013) Dating the diversification of the major lineages of Ascomycota (Fungi). *PLoS ONE* 8(6): e65576. <https://doi.org/10.1371/journal.pone.0065576>
- Rambaut A (2014) FigTree 1.4.2. <http://tree.bio.ed.ac.uk/software/figtree>
- Rambaut A, Suchard MA, Xie D, Drummond AJ (2013) Tracer version 1.6. <http://tree.bio.ed.ac.uk/software/tracer>
- Rannala B, Yang ZH (1996) Probability distribution of molecular evolutionary trees: a new method of phylogenetic inference. *Journal of Molecular Evolution* 43: 304–311. <https://doi.org/10.1007/BF02338839>
- Rehner SA, Buckley E (2005) A *Beauveria* phylogeny inferred from nuclear ITS and EF1- $\alpha$  sequences: evidence for cryptic diversification and links to *Cordyceps* teleomorphs. *Mycologia* 97(1): 84–98. <https://doi.org/10.1080/15572536.2006.11832842>
- Ronquist F, Huelsenbeck JP (2003) MrBayes3: Bayesian phylogenetic inference under mixed models. *Bioinformatics* 19(12): 1572–1574. <https://doi.org/10.1093/bioinformatics/btg180>
- Rodrigues KF, Samuels GJ (1990) Preliminary study of endophytic fungi in a tropical palm. *Mycological Research* 94: 827–830. [https://doi.org/10.1016/S0953-7562\(09\)81386-5](https://doi.org/10.1016/S0953-7562(09)81386-5)
- Samarakoon MC, Hyde KD, Promputtha I, Ariyawansa HA, Hongsanan S (2016) Divergence and ranking of taxa across the kingdoms Animalia, Fungi and Plantae. *Mycosphere* 7: 1678–1689. <https://doi.org/10.5943/mycosphere/7/11/5>
- Schmidt AR, Beimforde C, Seyfullah LJ, Wege SE, Dörfelt H, Girard V, Grabenhorst H, Gube M, Heinrichs J, Nel A, Patricia N, Perrichot V, Reitner J, Rikkinen J (2014) Amber fossils of sooty moulds. *Review of Palaeobotany and Palynology* 200: 53–64. <https://doi.org/10.1016/j.revpalbo.2013.07.002>
- Spegazzini CL (1881) Fungi Argentini additis nonnullis Brasiliensibus Montevideensibusque. *Anales de la Sociedad Científica Argentina* 12(4): 174–189.
- Stamatakis A (2006) RAxML-VI-HPC: maximum likelihood-based phylogenetic analyses with thousands of taxa and mixed models. *Bioinformatics* 22(21): 2688–2690. <https://doi.org/10.1093/bioinformatics/btl446>
- Stamatakis A, Hoover P, Rougemont J (2008) A rapid bootstrap algorithm for the RAxML web servers. *Systematic Biology* 57(5): 758–771. <https://doi.org/10.1080/10635150802429642>
- Suetrong S, Schoch CL, Spatafora JW, Kohlmeyer J, Volkmann-Kohlmeyer B, Sakayaroj J, Phongpaichit S, Tanaka K, Hirayama K, Jones EBG (2009) Molecular systematics of the marine *Dothideomycetes*. *Studies in Mycology* 64: 155–173. <https://doi.org/10.3114/sim.2009.64.09>
- Suetrong S, Klaysuban A, Sakayaroj J, Preedanon S, Ruang-Areerate P, Phongpaichit S, Pang KL, Jones EBG (2015) Tirisporellaceae, a new family in the order Diaporthales (Sordariomycetes, Ascomycota). *Cryptogamie, Mycologie* 36(3): 319–330. <https://doi.org/10.7872/crym/v36.iss3.2015.319>

- Swofford DL (2002) PAUP\*. Phylogenetic analysis using parsimony (\*and other methods). Version 4. Sinauer Associates, Sunderland, Massachusetts, USA.
- Taylor JE, Hyde KD, Jones EBG (1999) Endophytic fungi associated with the temperate palm, *Trachycarpus fortunei*, within and outside its natural geographic range. *New Phytologist* 142: 335–346. <https://doi.org/10.1046/j.1469-8137.1999.00391.x>
- Taylor JE, Hyde KD, Jones EBG (2000) The biogeographical distribution of microfungi associated with three palm species from tropical and temperate habitats. *Journal of Biogeography* 27: 297–310. <https://doi.org/10.1046/j.1365-2699.2000.00385.x>
- Taylor JE, Hyde KD (2003) *Microfungi of tropical and temperate palms*. Fungal Diversity Press, 1–459.
- Taylor TN, Krings M, Taylor EL (2015) *Fossil fungi*. Academic Press, 129–171. <https://doi.org/10.1016/B978-0-12-387731-4.00008-6>
- Tomlinson P (1986) *The botany of mangroves*. Cambridge tropical biology series. Cambridge University Press, Cambridge, 1–432.
- Vilgalys R, Hester M (1990) Rapid genetic identification and mapping of enzymatically amplified ribosomal DNA from several *Cryptococcus* species. *Journal of Bacteriology* 172(8): 4238–4246. <https://doi.org/10.1128/jb.172.8.4238-4246.1990>
- Wanasinghe DN, Jeewon R, Jones EBG, Boonmee S, Kaewchai S, Manawasinghe IS, Lumyong S, Hyde KD (2018) Novel palmicolous taxa within Pleosporales: multigene phylogeny and taxonomic circumscription. *Mycological Progress* 17(5): 571–590. <https://doi.org/10.1007/s11557-018-1379-4>
- White TJ, Bruns T, Lee S, Taylor J (1990) Amplification and direct sequencing of fungal ribosomal RNA genes for phylogenetics. In: Innis MA, Gelfand DH, Sninsky JJ, White TJ (Eds) *PCR protocols: a guide to methods and applications*. Academic Press, Inc., New York, 315–322.
- Yanna, Ho WH, Hyde KD, Goh TK (2001a) Occurrence of fungi on tissues of *Livistona chinensis*. *Fungal Diversity* 6: 167–180.
- Yanna, Ho WH, Hyde KD (2001b) Fungal communities on decaying palm fronds in Australia, Brunei, and Hong Kong. *Mycological Research* 105(12): 1458–1471. <https://doi.org/10.1017/S0953756201005214>
- Yanna, Ho WH, Hyde KD, McKenzie EHC (2001c) *Sporidesmiella oraniopsis*, a new species of dematiaceous hyphomycete from North Queensland, Australia and synopsis of the genus. *Fungal Diversity* 8: 183–190.
- Yanna, Ho WH, Hyde KD (2002) Fungal succession on fronds of *Phoenix hanceana* in Hong Kong. *Fungal Diversity* 10: 185–211.
- Zhang JF, Liu JK, Hyde KD, Liu YX, Bahkali AH, Liu ZY (2016) *Ligninsphaeria jonesii* gen. et. sp. nov., a remarkable bamboo inhabiting ascomycete. *Phytotaxa* 247(2): 109–117. <https://doi.org/10.11646/phytotaxa.247.2.2>
- Zhang SN, Hyde KD, Jones EBG, Cheewangkoon R, Liu JK (2018) *Acuminatispora palmarum* gen. et sp. nov. from mangrove habitats. *Mycological progress* 17: 1173–1188. <https://doi.org/10.1007/s11557-018-1433-2>
- Zhao RL, Li GJ, Sánchez-Ramírez S, Stata M, Yang ZL, Wu G, Dai YC, He SH, Cui BK, Zhou JL, Wu F, He MQ, Moncalvo JM, Hyde KD (2017) A six-gene phylogenetic overview of *Basidiomycota* and allied phyla with estimated divergence times of higher taxa and a phyloproteomics perspective. *Fungal Diversity* 84: 43–74. <https://doi.org/10.1007/s13225-017-0381-5>

## Supplementary material I

### Phylogenetic analysis

Authors: Sheng-Nan Zhang, Kevin D. Hyde, E.B. Gareth Jones, Rajesh Jeewon, Ratchadawan Cheewangkoon, Jian-Kui Liu

Copyright notice: This dataset is made available under the Open Database License (<http://opendatacommons.org/licenses/odbl/1.0/>). The Open Database License (ODbL) is a license agreement intended to allow users to freely share, modify, and use this Dataset while maintaining this same freedom for others, provided that the original source and author(s) are credited.

Link: <https://doi.org/10.3897/mycokeys.49.30886.suppl1>