

CORRECTION

Correction: Prevalence of cases of amebic liver abscess in a tertiary care centre in India: A study on risk factors, associated microflora and strain variation of *Entamoeba histolytica*

The PLOS ONE Staff

Due to an error introduced during the typesetting process, Fig 4 is incorrect. The publisher apologizes for the error. Please see the correct Fig 4 here.

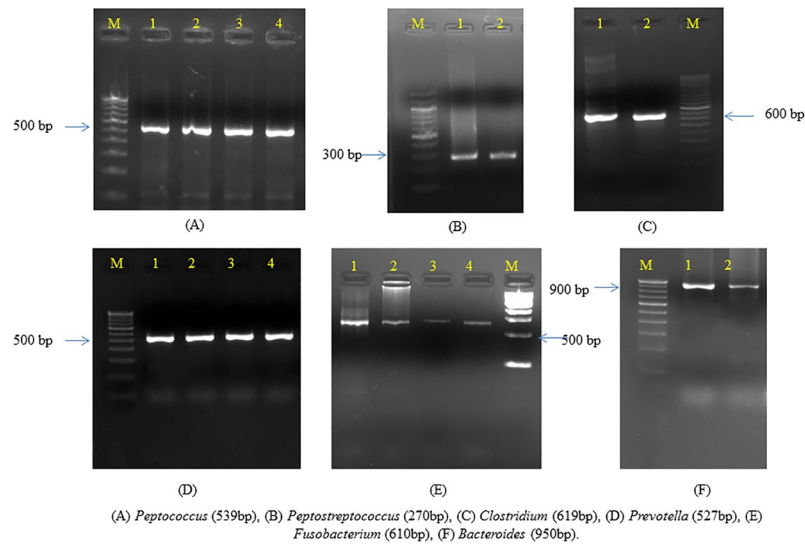
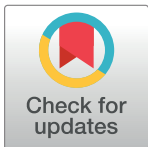


Fig 4. Agarose gel electrophoresis of different anaerobes in liver abscess samples.

<https://doi.org/10.1371/journal.pone.0215774.g001>



OPEN ACCESS

Citation: The PLOS ONE Staff (2019) Correction: Prevalence of cases of amebic liver abscess in a tertiary care centre in India: A study on risk factors, associated microflora and strain variation of *Entamoeba histolytica*. PLoS ONE 14(4): e0215774. <https://doi.org/10.1371/journal.pone.0215774>

Published: April 17, 2019

Copyright: © 2019 The PLOS ONE Staff. This is an open access article distributed under the terms of the [Creative Commons Attribution License](https://creativecommons.org/licenses/by/4.0/), which permits unrestricted use, distribution, and reproduction in any medium, provided the original author and source are credited.

Reference

1. Singh A, Banerjee T, Kumar R, Shukla SK (2019) Prevalence of cases of amebic liver abscess in a tertiary care centre in India: A study on risk factors, associated microflora and strain variation of *Entamoeba histolytica*. PLoS ONE 14(4): e0214880. <https://doi.org/10.1371/journal.pone.0214880> PMID: 30943253