

# Novel insights into host specificity of *Pyricularia oryzae* and *Pyricularia grisea* in the infection of gramineous plant roots

Zikai Xiang | Daiki Okada | Soichiro Asuke | Hitoshi Nakayashiki | Kenichi Ikeda 

Graduate School of Agricultural Science,  
Kobe University, Kobe, Japan

## Correspondence

Kenichi Ikeda, Laboratory of Cell Function and Structure, Graduate School of Agricultural Science, Kobe University, 1-1 Rokkodai, Nada, Kobe 657-8501, Japan.  
Email: [ikeken@phoenix.kobe-u.ac.jp](mailto:ikeken@phoenix.kobe-u.ac.jp)

## Funding information

International collaborative research project for solving global issues; JST SPRING, Grant/Award Number: JPMJSP2148

## Abstract

*Pyricularia oryzae* and *Pyricularia grisea* are pathogens that cause blast disease in various monocots. It has been reported that *P. oryzae* infects the leaves and roots of rice via different mechanisms. However, it is unclear to what extent the tissue types affect the host specificities of *P. oryzae* and *P. grisea*. Here, we evaluated the tissue-specific infection strategies of *P. oryzae* and *P. grisea* in various gramineous plants. Generally, mycelial plug inoculation caused root browning but the degree of browning did not simply follow the disease index on leaves. Interestingly, the *Triticum* and *Digitaria* pathotypes caused strong root growth inhibition in rice, wheat, and barley. Moreover, the *Digitaria* pathotype inhibited root branching only in rice. Culture filtrate reproduced these inhibitory effects on root, suggesting that some secreted molecules are responsible for the inhibitions. Observation of root sections revealed that most of the infection hyphae penetrated intercellular spaces and further extended into root cells, regardless of pathotype and host plant. The infection hyphae of *Digitaria* and *Triticum* pathotypes tended to localize in the outer layer of rice roots, but not in those of wheat and barley roots. The infection hyphae of the *Oryza* pathotype were distributed in both the intercellular and intracellular spaces of rice root cells. Pathogenesis-related genes and reactive oxygen species accumulation were induced after root inoculation with all combinations. These results suggest that resistance reactions were induced in the roots of gramineous plants against the infection with *Pyricularia* isolates but failed to prevent fungal invasion.

## KEYWORDS

defence response, pathogenesis-related (PR) genes, pathogenicity, pathotype, tissue specificity

## 1 | INTRODUCTION

*Pyricularia* is a phytopathogenic filamentous fungal genus that causes blast disease, mainly in monocotyledonous plants. Rice blast caused by *Pyricularia oryzae* (syn. *Magnaporthe oryzae*) is one of the most devastating plant diseases. Another species, *Pyricularia grisea*, a crabgrass pathogen, is closely related and morphologically similar to *P. oryzae* (Murata et al., 2014). When a *Pyricularia* spore adheres

to the leaf surface, the spore sprouts germ tubes and forms an appressorium. The appressorium deposits melanin on the inner layer of the cell wall (Howard & Ferrari, 1989) and accumulates large amounts of glycerol via glycogen, which generates strong turgor pressure (Thines et al., 2000). Finally, *P. oryzae* uses the penetration peg generated at the bottom of the appressorium to penetrate the leaf surface (Howard et al., 1991). Various genes and signalling pathways are involved in this process, including the cAMP signalling

This is an open access article under the terms of the [Creative Commons Attribution-NonCommercial](https://creativecommons.org/licenses/by-nc/4.0/) License, which permits use, distribution and reproduction in any medium, provided the original work is properly cited and is not used for commercial purposes.

© 2022 The Authors. *Molecular Plant Pathology* published by British Society for Plant Pathology and John Wiley & Sons Ltd.

pathway, mitogen-activated protein kinase signalling pathways, the autophagy pathway, and NADPH oxidase-mediated cytoskeleton dynamics (Ikeda et al., 2019; Wilson & Talbot, 2009). Although *P. oryzae* is known to be pathogenic to the leaves, ears, and other aboveground parts of plants, it can also infect the roots (Dufresne & Osbourn, 2001). The characteristic of a diseased root is browning. *P. oryzae* invades root cells via hyphopodia and pre-infection hyphae instead of the appressorium (Sesma & Osbourn, 2004; Tucker et al., 2010). Moreover, this infection process does not require the cAMP signalling pathway or melanin synthesis (Dufresne & Osbourn, 2001; Sesma & Osbourn, 2004). These different infection strategies represent significant structural and metabolic differences between aboveground and underground tissues.

The interaction between the host plant and *P. oryzae* is well studied. Host specificities are determined by the combinations of avirulence (Avr) genes of the pathogen and disease resistance (R) genes of the host plant. In rice (*Oryza sativa*), numerous Avr genes of *P. oryzae* and R genes of the plant have been identified, and these combinations explain the race-cultivar specificity (Li et al., 2019; Wang et al., 2016; Wu et al., 2015). Most Avr genes encode signal peptides and are thought to function as effectors; therefore, these race-cultivar specificities are called effector-triggered immunity. The *P. oryzae* population comprises various pathotypes with different host ranges, such as the *Oryza*, *Triticum*, *Setaria*, *Lolium*, and *Eleusine* pathotypes (Kato et al., 2000). These pathotype-genus specificities are robust and are thought to have been brought about by the co-evolution of host plants and pathogens (Kato et al., 2000). These specificities are also explained by the combination of Avr and R genes (Inoue et al., 2017). The robustness of these resistances seems to be stronger than that of race-cultivar specificity because of the pyramiding Avr-R combinations (Tosa & Chuma, 2014). In addition to these specificities, pathogen-associated molecular pattern-triggered immunity, which is recognized by pattern recognition receptors, may function in more distant host-pathogen combinations (Jones & Dangl, 2006).

In plants, various pathogenesis-related (PR) genes have been reported to be induced during *P. oryzae* infection (Jung et al., 2016; Manandhar et al., 1999). PR genes are thought to be induced on the recognition of the presence of pathogens, and are induced in both susceptible and resistant combinations, although PR gene expression is faster and higher in resistant combinations (Jung et al., 2016; Muhae-Ud-Din et al., 2020). The expression analysis of PR genes appears to reflect the behaviour of pathogens in the host plant.

However, most of these reports were the results of leaf inoculation. Until now, it has been thought that similar host specificity is established in the leaves and in roots. For example, *P. oryzae* isolate Guy11 transformed with Avr1-CO39 could not colonize the rice cultivar CO39, suggesting that race-cultivar specificity functions in roots (Sesma & Osbourn, 2004). Some PR genes were induced in rice roots invaded by *P. oryzae* (Marcel et al., 2010). In addition, wild rice roots were more resistant to *P. oryzae* than cultivated rice roots, and the expression patterns of PR genes were different between the two rice lines (Tian et al., 2018). However, in our previous

study, browning lesions were formed when Guy11, an *Oryza* pathotype isolate, was inoculated on wheat roots. This was an unexpected reaction because this combination was a pathotype-genus-specific resistance in leaves. It was also considered that browning might be associated with a resistance reaction rather than a compatible reaction. Therefore, we conducted an inoculation experiment to examine whether race-cultivar specificity and pathotype-genus specificity function in roots.

To examine race-cultivar specificity, we used the rice cultivar Lijiangxintuanheigu (LTH) and LTH monogenic lines (Tsunematsu et al., 2000) carrying R genes (*Pik-p*, *Pish*, *Piz*, and *Piz-t*) that confer resistance against the isolate Guy11. To examine pathotype-genus specificity, we used five isolates belonging to *P. oryzae* (*Oryza* isolate Guy11, *Setaria* isolate GFS11-7-2, *Eleusine* isolate MZ5-1-6, and *Triticum* isolate Br48) and *P. grisea* (*Digitaria* isolate Dig4-1), and three host gramineous genera (*O. sativa* 'CO39', *Triticum aestivum* 'Norin 4', and *Hordeum vulgare* 'Nigrate').

We found that the roots of gramineous plants were vulnerable to *Pyricularia* species infection, although the roots induced resistance responses. We also found that *Pyricularia* species produced some secretion molecules involved in root growth inhibition.

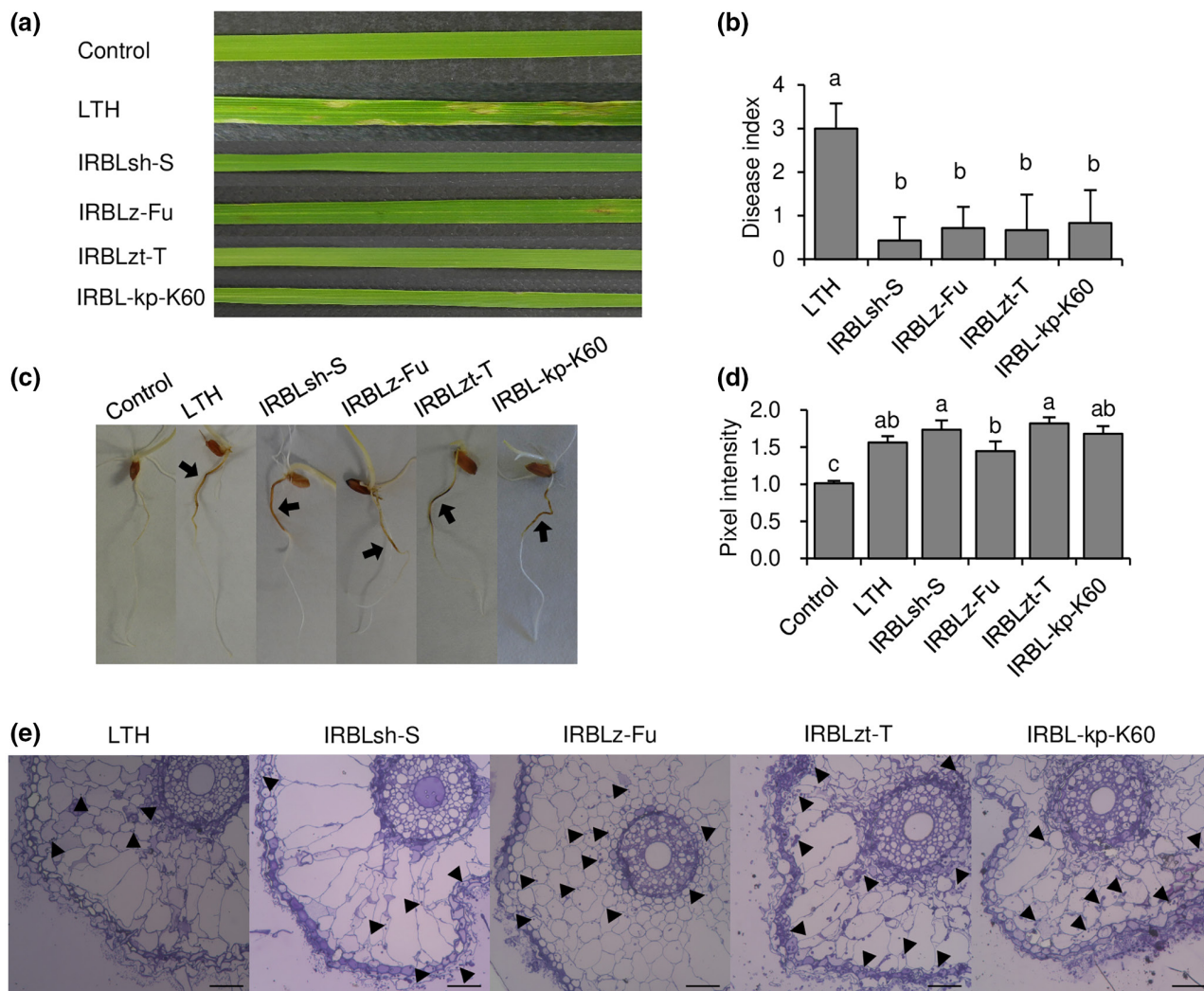
## 2 | RESULTS

### 2.1 | Race-cultivar specificity: Brown lesions formed in the roots of LTH and the monogenic lines

To evaluate race-cultivar specificity, we used the *Oryza* pathotype isolate Guy11 and LTH monogenic lines. The Japanese race code for Guy11 is 126.4 (Hayashi, 2005). We selected the LTH monogenic lines IRBLsh-S (*Pish*), IRBLz-Fu (*Piz*), IRBLz-t-T (*Piz-t*), and IRBL-kp-K60 (*Pik-p*), which are presumed to be resistant to Guy11. In the leaf inoculation experiment, the disease indices of the LTH monogenic lines were significantly lower than those of the original cultivar LTH (Figure 1a,b). In contrast, all inoculated roots exhibited strong browning (Figure 1c,d). The cross-sections of Guy11-inoculated roots showed that numerous infection hyphae had spread to root cortex cells, and there was no discernible difference in the colonization of hyphae between LTH and the monogenic lines (Figure 1e). These results suggest that root browning is associated with a susceptible reaction.

### 2.2 | Race-cultivar specificity: R and PR genes were expressed in the roots of LTH and the monogenic lines

As the resistance reaction did not function in roots, it was possible that the R gene or the downstream PR genes were not functioning. The expression of two R genes, *Pish* and *Pik-p*, was analysed. Both genes were constitutively expressed in the leaves and roots, and their expression increased after Guy11 inoculation (Figure S1). To further explore the variation in the expression of PR genes, we



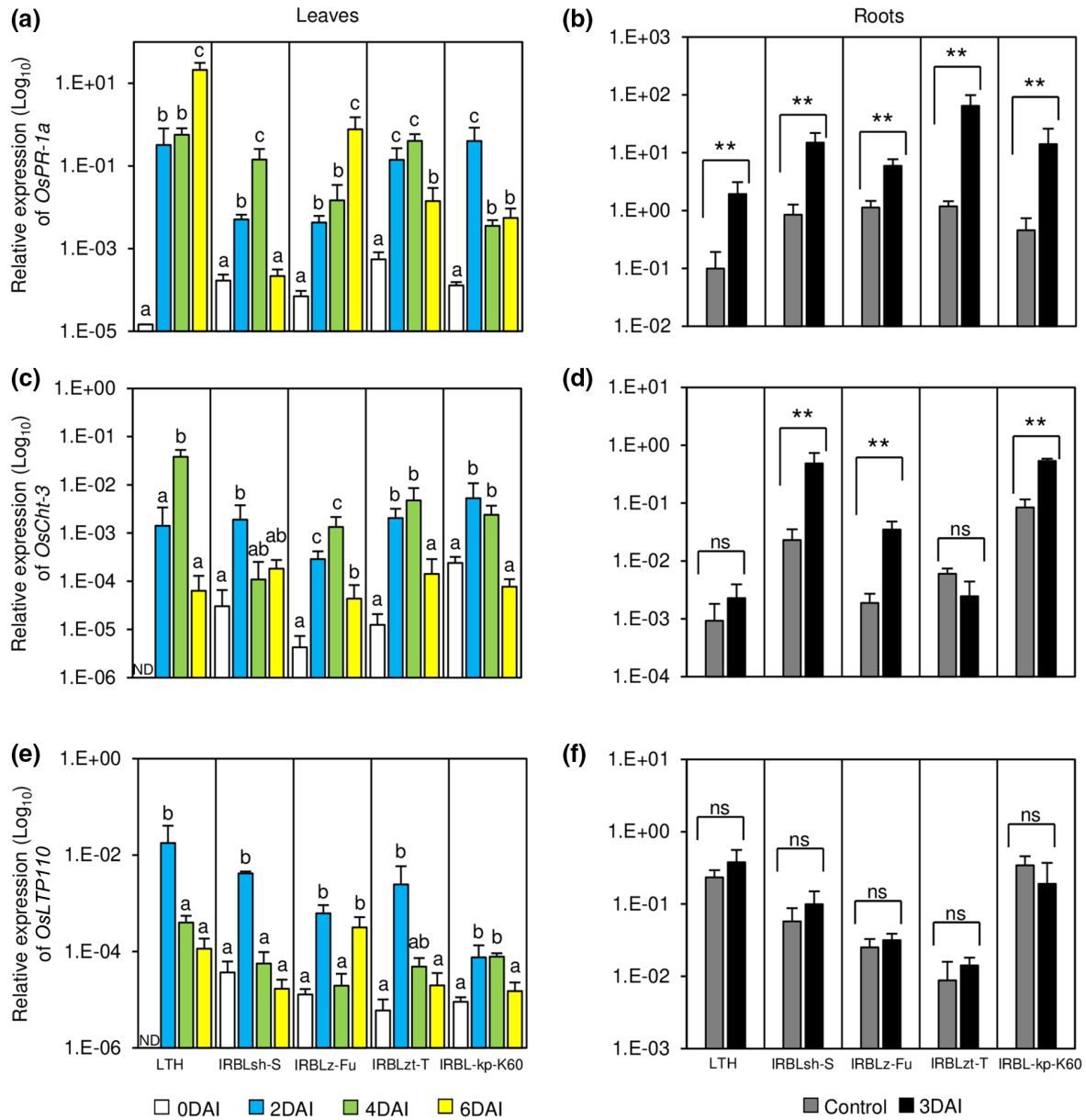
**FIGURE 1** Pathogenicity of *Oryza* pathotype Guy11 in the leaves and roots of rice cultivar Lijangxintuanheigu (LTH) and the monogenic lines carrying R genes. Disease symptoms (a) and disease indices (b) on the leaves. Disease symptoms (c) and colour indices (d) on the roots. Arrows indicate brown lesions. (a–d) Controls are LTH without treatment. The bars represent standard deviations calculated from three replications. Different letters indicate significant differences between treatments (Tukey test,  $p < 0.05$ ). (e) Microscopic observation of the root cross-sections of LTH and LTH monogenic lines inoculated with Guy11. Toluidine blue-stained small dots are infection hyphae of Guy11. Arrowheads indicate typical examples of infection hyphae. Scale bars indicate 50  $\mu\text{m}$ .

selected six genes from rice: *OsPR-1a* (serine carboxypeptidase-like protein, acidic), *OsPR-1b* (serine carboxypeptidase-like protein, basic), *OsCht-3* (chitinase), *OsPBZ1* (probenazole-induced protein), *RSOsPR-10* (root-specific PR-10), and *OsLTP110* (lipid transfer protein). The expression of *OsPR-1a*, *OsPR-1b*, *OsPBZ1*, and *RSOsPR-10* increased after Guy11 inoculation in both the leaves and roots (Figures 2 and S2). R gene-dependent variations were observed in the expression of *OsCht-3* in roots, that is, monogenic lines carrying *Pish*, *Piz*, or *Pik-p* induced *OsCht-3* expression in the roots, whereas LTH and a monogenic line carrying *Piz-t* did not induce *OsCht-3* expression in the roots (Figure 2c,d). The expression of *OsLTP110* in leaves was significantly induced at 2 days after inoculation (DAI), but there were no significant differences after the inoculation of roots (Figure 2e,f). However, the relative expression level of *OsLTP110* in the roots was higher than that in the leaves (Figure 2e,f).

Reactive oxygen species (ROS) generation is an indicator of plant resistance reactions (Levine et al., 1994). We evaluated ROS generation in roots by 3,3'-diaminobenzidine (DAB) staining. Although it was difficult to strictly evaluate the positive DAB reaction in the browning lesion at the inoculation site, it was confirmed that ROS were generated; however, no difference was observed between LTH and the monogenic line IRBLzt-T (*Piz-t*) (Figure S3).

### 2.3 | Pathotype–genus specificity: Various pathotypes caused different disease symptoms in the roots of gramineous plants

To investigate pathotype–genus specificity, four *P. oryzae* isolates, *Oryza* pathotype Guy11, *Setaria* pathotype GFSI1-7-2, *Eleusine* pathotype MZ5-1-6, and *Triticum* pathotype Br48, and *P. grisea*

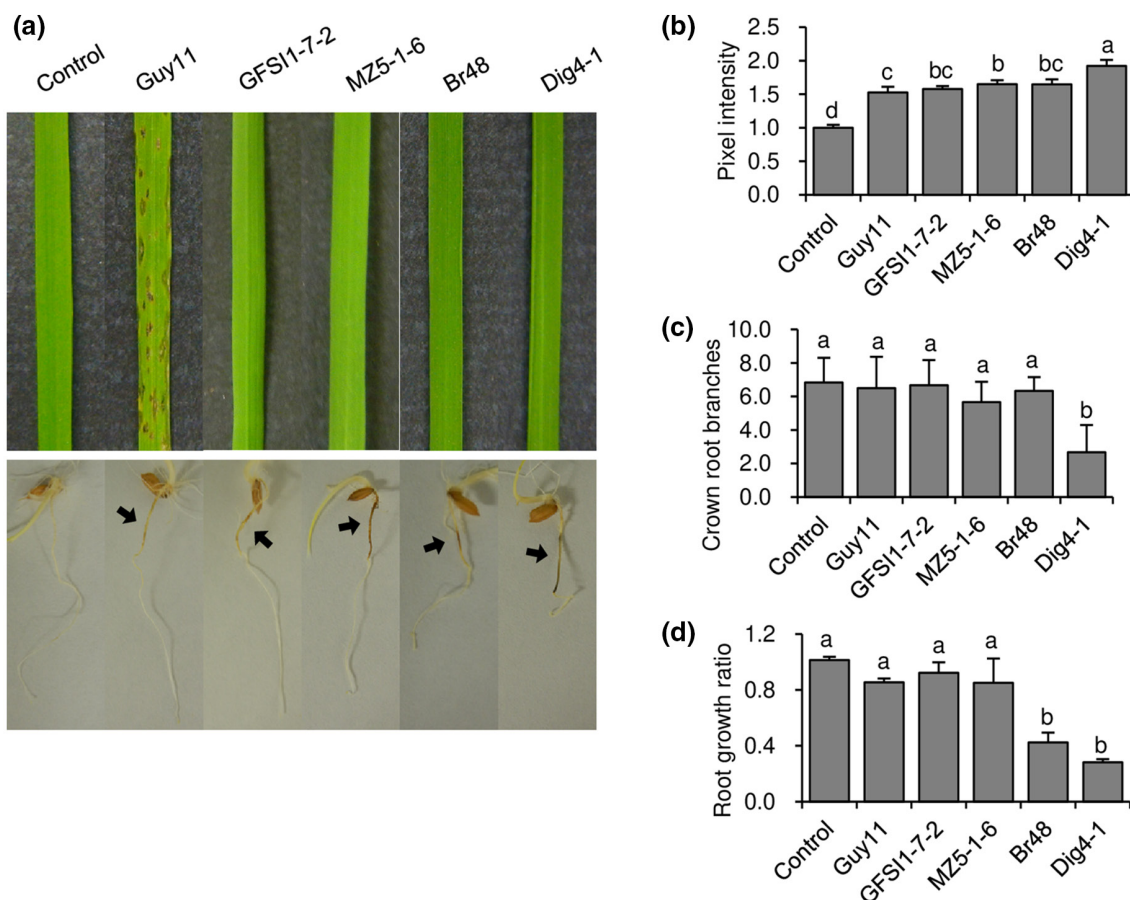


**FIGURE 2** Relative gene expression of pathogenesis-related genes in the leaves and roots of rice cultivar Lijiangxintuanheigu (LTH) and the monogenic lines carrying R genes inoculated with Guy11. Expression pattern of *OsPR-1a* in the leaves (a) and roots (b), *OsCht-3* in the leaves (c) and roots (d), and *OsLTP110* in the leaves (e) and roots (f). White bars, control leaves (no inoculation); blue bars, leaves at 2 days after inoculation (DAI); green bars, leaves at 4 DAI; yellow bars, leaves at 6 DAI; grey bars, control roots (no inoculation); black bars, roots at 3 DAI. The housekeeping gene *OsActin* (*Os11g0163100*) was used as an internal standard. Relative gene expression was calculated using the comparative  $2^{-\Delta\Delta Ct}$  method. The bars represent standard deviations calculated from three biological replications. Different letters indicate significant differences between treatments (Tukey test,  $p < 0.05$ ). Root samples were statistically analysed by the *t* test (\*\* $p < 0.01$ ). ns, no significant difference.

*Digitaria* pathotype Dig4-1 were inoculated on the leaves and roots of rice cultivar CO39. In CO39 leaves, only Guy11 induced disease lesions after inoculation (Figure 3a). However, browning was observed in the roots inoculated with all isolates (Figure 3a). We evaluated the pixel intensity of browning and found that Dig4-1 caused the strongest browning of the roots (Figure 3b). Dig4-1 also inhibited crown root branching in CO39 cells (Figure 3c). In addition, we found that root growth was significantly inhibited by inoculation with Br48 and Dig4-1 (Figure 3d). To clarify the generality of these effects in rice, we inoculated the roots of LTH and IRBLzt-T (*Piz-t*) with Guy11,

Br48, and Dig4-1. We observed similar root growth inhibition upon inoculation with Br48 and Dig4-1 as well as crown root branching inhibition upon inoculation with Dig4-1 (Figures S4 and S5).

We also inoculated the leaves and roots of wheat cultivar Norin4 and barley cultivar Nigrate with *Pycularia* isolates. Only isolate Br48 induced lesions in wheat leaves (Figures 4a and S6). Inoculation with all *Pycularia* isolates resulted in lesions, but the severity was variable in barley leaves (Figures 4b and S6). All combinations induced browning in wheat and barley roots, but the colour indices were lower than that in rice (Figure 4c,d). Root growth inhibition was



**FIGURE 3** Pathogenicity of *Pyricularia* isolates in the leaves and roots of rice cultivar CO39. (a) Disease symptoms on the leaves and roots. Arrows indicate brown lesions. Colour indices of root browning (b), number of crown root branches (c), and ratio of root growth compared to the control (d) are shown. Control is no treatment. The bars represent standard deviations calculated from three biological replications. Different letters indicate significant differences between treatments (Tukey test,  $p < 0.05$ ).

also observed in wheat and barley inoculated with Br48 and Dig4-1 (Figure 4e,f). However, root branching inhibition, which was found in rice inoculated with Dig4-1, was not observed in wheat and barley roots (Figure 4g,h).

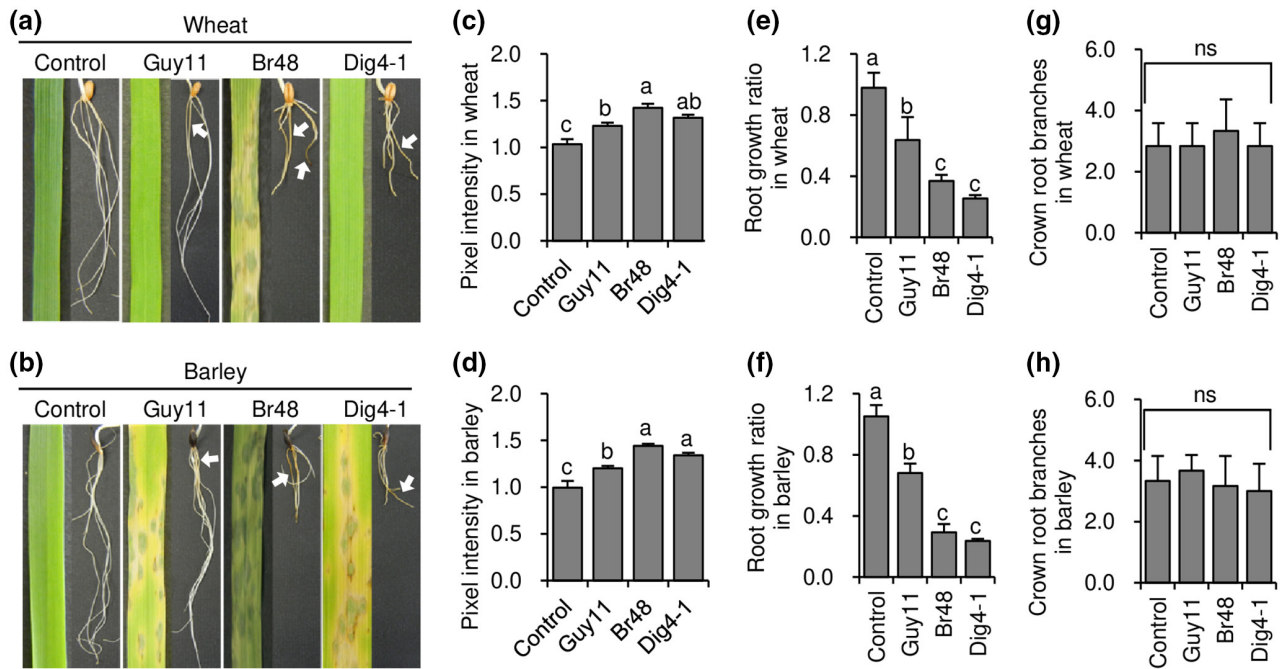
#### 2.4 | Pathotype–genus specificity: Infection hyphae of various pathotypes differentially colonized the roots of gramineous plants

Root sections inoculated with *Pyricularia* isolates were observed under a microscope. The infection hyphae were extended in root cells in all combinations tested (Figure 5a,e). However, the localization of infection hyphae in rice root tissues differed depending on the pathotype. We divided the rice root sections into an outer layer (epidermis cells and sclerenchyma cells) and a middle layer (cortex cells). The infection hyphae of Br48 and Dig4-1 were localized in the outer layer, but those of the other pathotypes were evenly distributed (Figure 5b). Furthermore, after inoculation with Br48 or Dig4-1, the average number of infection hyphae per infected rice root cell was higher than after inoculation with the other isolates, suggesting

that the hyphal mass per single cell was larger than that of the other isolates (Figure 5c). Interestingly, many Guy11 hyphae extended to the intercellular space rather than inside root cells (Figures 5d and 57). This characteristic differed from that of the other isolates. In contrast to rice roots, in wheat and barley roots inoculated with Guy11, Br48, or Dig4-1 the sclerenchyma layer was not developed (Figure 5e); all isolates invaded internal cortical cells in these roots (Figure 5e). The average number of infection hyphae per infected root cell in wheat and barley did not differ between the isolates tested (Figure 5f,g). However, the infection hyphae of Guy11 were preferentially localized in the intercellular space of wheat and barley roots compared to those of the other isolates (Figure 5h,i).

#### 2.5 | Pathotype–genus specificity: PR gene expression in the leaves and roots of gramineous plants challenged by *Pyricularia* isolates

To evaluate the cellular response to the invasion of *Pyricularia* isolates, we analysed the expression patterns of PR genes in rice, wheat, and barley. In the leaves inoculated with Guy11, *OsPR-1a*



**FIGURE 4** Pathogenicity of *Pyricularia* isolates in the leaves and roots of wheat and barley. Disease symptoms on the leaves and roots of wheat (a) and barley (b). Arrows indicate brown lesions. Colour indices of browning in wheat (c) and barley (d). Root growth ratio compared to the control in wheat (e) and barley (f). Crown root branch number in wheat (g) and barley (h). Control is no treatment. The bars represent standard deviations calculated from three biological replications. Different letters indicate significant differences between treatments (Tukey test,  $p < 0.05$ ). ns, no significant difference.

and *OsPR-1b* were induced up to 6 DAJ; however, inoculation with the other isolates decreased *OsPR-1a* expression (Figure 6a,c). In the inoculated roots, *OsPR-1a* and *OsPR-1b* were induced by all isolate combinations (Figure 6b,d). Interestingly, the expression levels of *OsPR-1b* after inoculation with Br48 or Dig4-1 were higher than after inoculation with Guy11 (Figure 6d). We also evaluated *PR-1* expression in wheat and barley. Inoculation with all combinations of *Pyricularia* isolates induced *PR-1* genes in the leaves and roots (Figure S8).

## 2.6 | Culture filtrates of Br48 and Dig4-1 caused root growth inhibition

In the present study, Br48 and Dig4-1 inhibited root growth. As the root extends to the apical meristem, the site of inoculation might affect root growth inhibition. Therefore, we roughly divided the roots into the base and tip regions (Figure 7a). We separately inoculated these regions with mycelial plugs of Dig4-1, and found that inoculation of both regions resulted in strong browning and growth inhibition (Figure 7c,d). To test the possibility that some inhibitory factors were secreted by Dig4-1, we used a 0.22- $\mu$ m filter membrane to avoid direct contact between the mycelia and roots (Figure 7b). Interestingly, strong growth inhibition of roots was observed in rice, wheat, and barley even without direct contact with the mycelia of Br48 or Dig4-1 (Figures 7c–e and S9). In addition, inoculation with Dig4-1 separated by a 0.22- $\mu$ m filter membrane caused inhibition of

crown root branching (Figure 7f). Although filter membrane inoculation with Dig4-1 and Br48 resulted in slight browning, the degree was substantially lower than that after inoculation by direct mycelial contact (Figures 7c and S9).

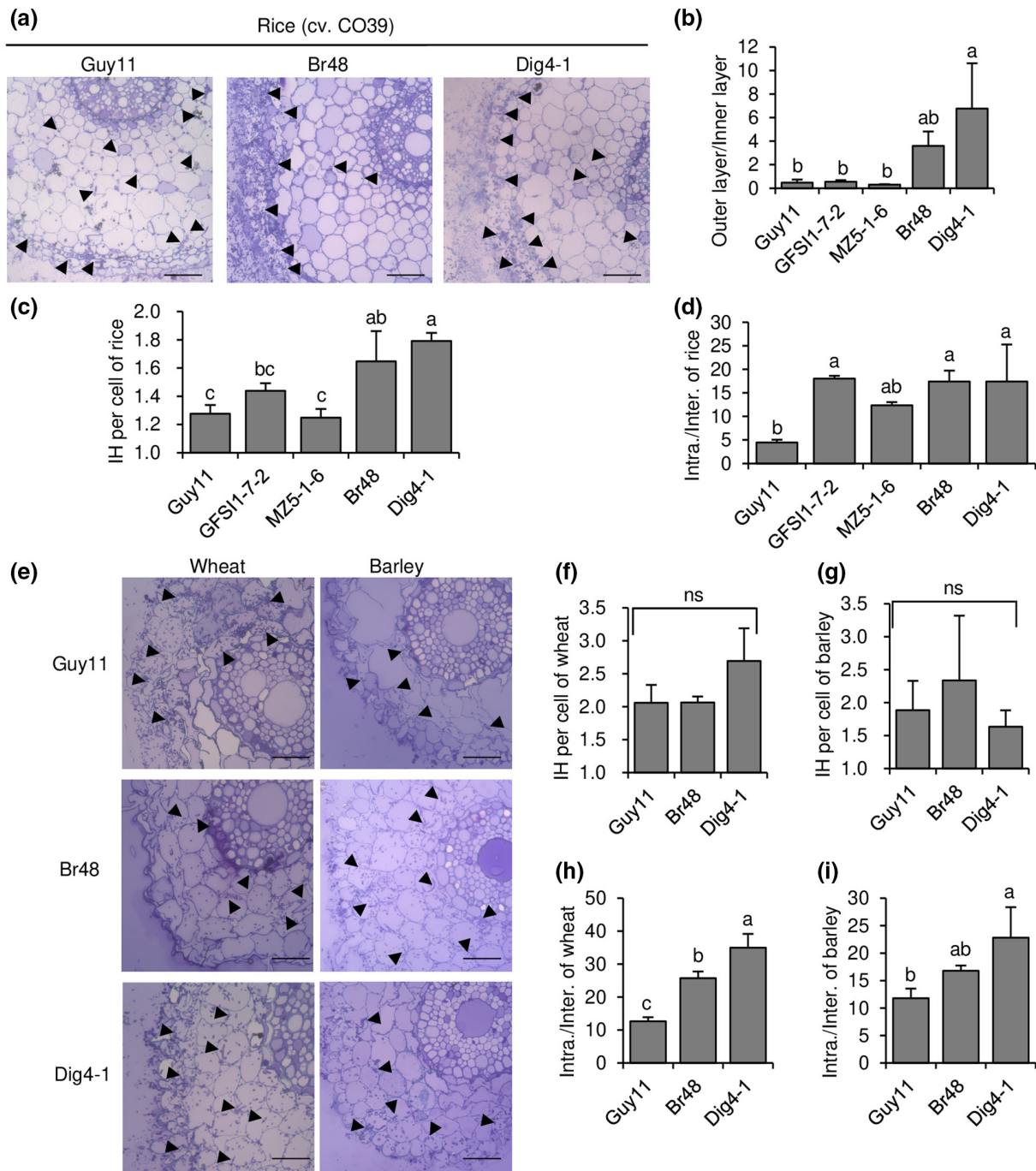
Next, we treated rice roots with culture filtrates of Br48 and Dig4-1 by filter paper inoculation (Figure 8a). The culture filtrates caused root growth inhibition (Figure 8b,c), supporting the idea that some secreted factors mediated root growth inhibition.

## 3 | DISCUSSION

In this study, we evaluated various combinations of *Pyricularia* isolates and their interactions with gramineous plants to better understand the tissue-specific infection strategies of *Pyricularia*. In the root inoculation, we used mycelial plugs instead of a spore suspension. Because it is rare for spores to reach the roots directly, root inoculation experiments were conducted assuming contact with hyphae extended from diseased residues in soil.

### 3.1 | Tissue-specific pathogenicity in *Pyricularia*

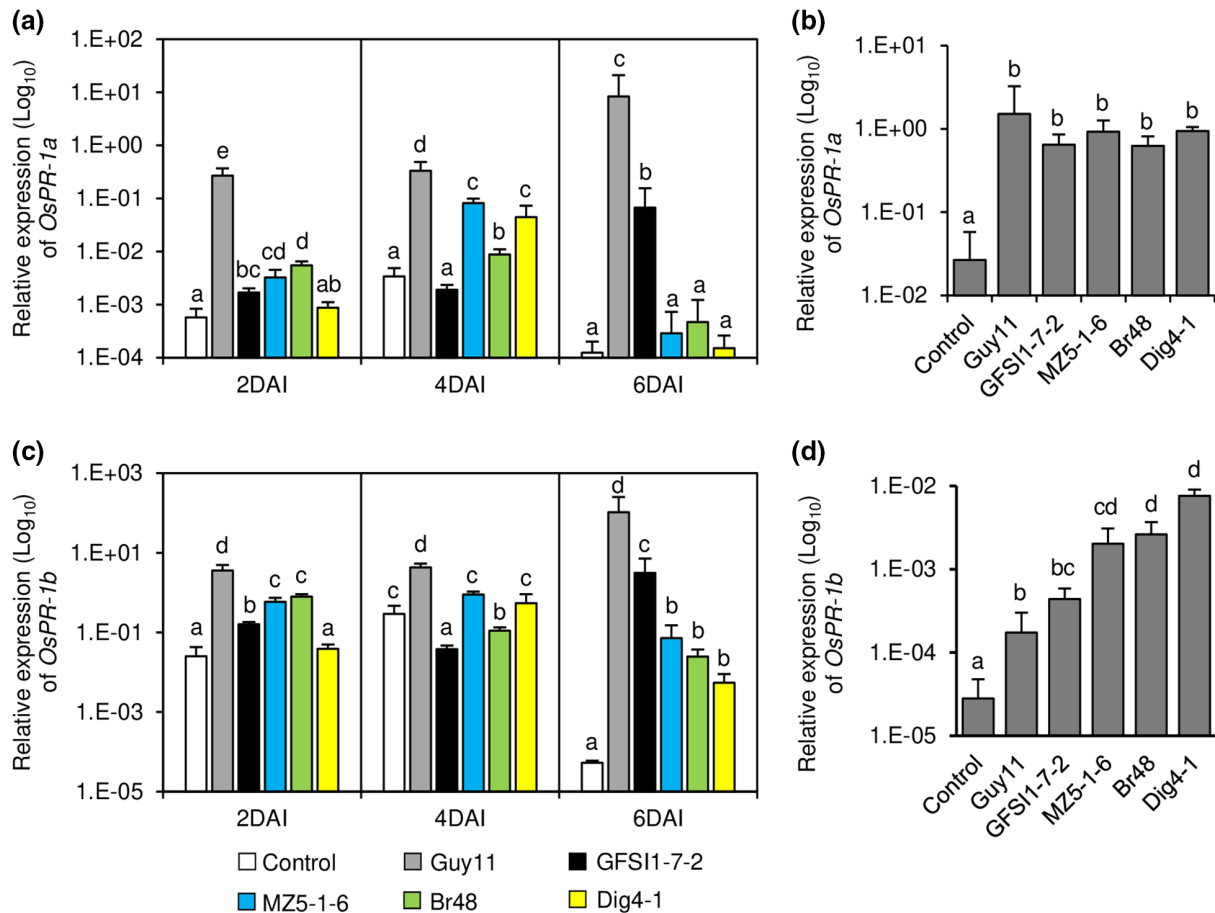
In the leaf inoculation experiment, it was confirmed that a resistance reaction was induced in the monogenic lines compared to that in the susceptible rice cultivar LTH. In a previous study, *AvrPiz-t* in Guy11 was not functional because a *Pot3* insertion occurred in



**FIGURE 5** Microscopic observation of root cross-sections of rice, wheat, and barley inoculated with *Pyricularia* isolates. (a) Microscopy photographs of CO39 rice root sections inoculated with Guy11, Br48, or Dig4-1. Scale bars indicate 50  $\mu$ m. The distribution ratio of invasive hyphae (IH) between the outer and inner layers (b), the average number of IH per infected root cell (c), and the distribution ratio of IH between intracellular and intercellular spaces (d) in rice roots inoculated with Guy11, GFS11-7-2, MZ5-1-6, Br48, or Dig4-1 isolates are shown. (e) Microscopy photographs of wheat and barley root sections inoculated with Guy11, Br48, or Dig4-1. Scale bars indicate 50  $\mu$ m. The average number of IH per infected root cell of wheat (f) and barley (g) and the distribution ratio of IH between the intracellular and intercellular spaces of wheat (h) and barley (i) roots inoculated with Guy11, Br48, or Dig4-1 isolates are shown. Arrowheads in (a) and (e) indicate typical examples of IH. The bars represent standard deviations calculated from three biological replications. Different letters indicate significant differences between treatments (Tukey test,  $p < 0.05$ ). ns, no significant difference.

the promoter region (Li et al., 2009). However, our Guy11 isolate in this study was confirmed by PCR to possess a Pot3 insertion and to express *AvrPiz-t* not only during appressorium formation on an

artificial membrane but also during the infection process on rice leaves (Figure S10). Therefore, we treated the *Piz-t*-carrying LTH monogenic line with the Guy11 isolate as an avirulent strain.



**FIGURE 6** Relative expression levels of the *PR-1a* and *PR-1b* genes in the leaves and roots of rice cultivar CO39 inoculated with *Pyricularia* isolates at different stages as analysed by reverse transcription-quantitative PCR. Expression patterns of *OsPR-1a* in leaves (a) and roots (b) and of *OsPR-1b* in leaves (c) and roots (d). (a and c) Leaves at 2 days after inoculation (DAI), 4 DAI, and 6 DAI. White bars, control leaves (no inoculation); grey bars, leaves inoculated with Guy11; black bars, leaves inoculated with GFSI1-7-2; blue bars, leaves inoculated with MZ5-1-6; green bars, leaves inoculated with Br48; yellow bars, leaves inoculated with Dig4-1. (b and d) Roots at 3 DAI. Control is no treatment. The housekeeping gene *OsActin* was used as an internal standard. Relative gene expression was calculated using the comparative  $2^{-\Delta\Delta Ct}$  method. The bars represent standard deviations calculated from three biological replications. Different letters indicate significant differences between treatments (Tukey test,  $p < 0.05$ ).

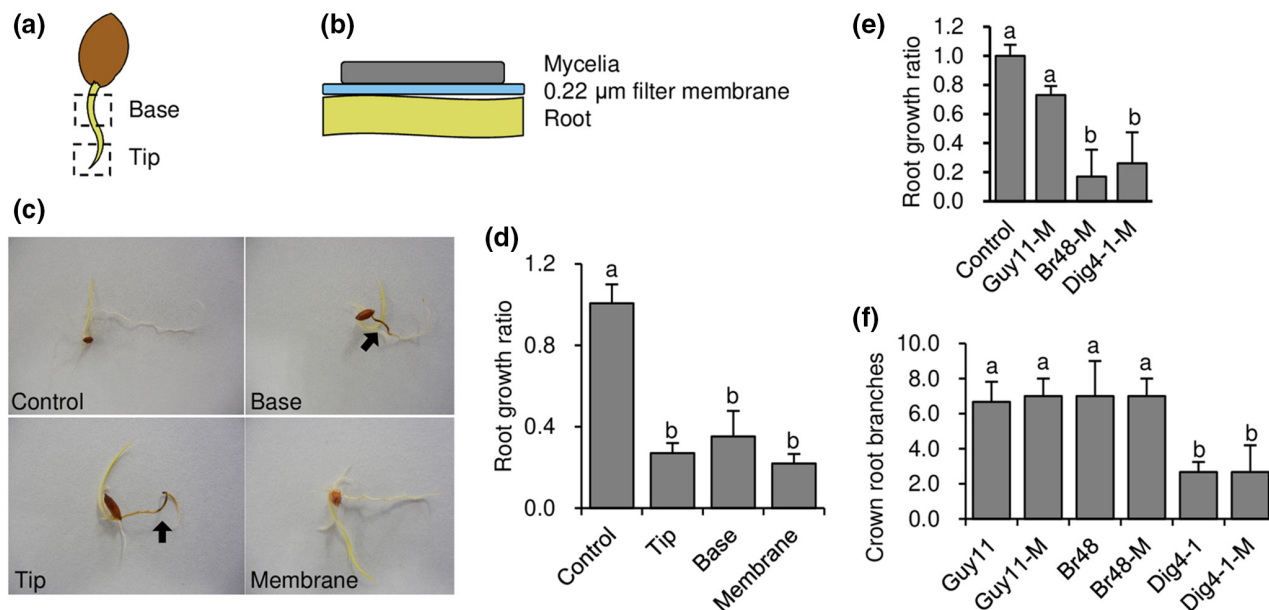
In contrast to leaf infection, the R genes in the monogenic lines had no obvious effect on resistance of rice roots to *P. oryzae*. In a previous study, R genes functioned not only in leaves but also in roots (Sesma & Osbourn, 2004). While we did not test the interaction between Avr1-CO30 and CO39 in rice as they did, we inoculated rice CO39 with *Setaria* pathotype GFSI1-7-2, which possesses Avr1-CO39 (Tosa et al., 2005); brown lesions were formed and mycelia invaded the roots. This result suggests that the resistance reaction between Avr1-CO39 and CO39 does not occur in roots. This difference may be explained by the inoculation method: in the previous study, mycelial plugs were placed under germinating seeds in vermiculite soil (Sesma & Osbourn, 2004), such that it is difficult for the mycelia to come into contact with the root as they grow. In the root inoculation experiment by Sesma and Osbourn (2004), infected hyphae were observed in the superficial cells of the roots in the section photographs of the resistant combination, and no inward extension was confirmed. Therefore, we prepared root sections and evaluated the degree of hyphal extension in root cells. We found no difference

between the susceptible LTH cultivar and the resistant monogenic lines, that is, the hyphae extended to the inside of the cortical cells of the root. This indicated that the invasion of *P. oryzae* cannot be stopped by the R genes in the roots. Furthermore, we analysed the pathogenicity of *Pyricularia* isolates in rice, barley, and wheat. In the leaf inoculation experiment, *Pyricularia* isolates belonging to different pathotypes exhibited genus-specific parasitism. However, we found that all *Pyricularia* isolates could infect roots of rice, barley, and wheat. This indicates that pathotype-genus-specific resistance against *Pyricularia* does not function in the roots of gramineous plants.

### 3.2 | Plant defence responses to tissue-specific *Pyricularia* infection

In this study, we determined that host-specific resistance did not function in the roots, and the resistance reaction was not triggered. We evaluated R gene expression in the roots. Most R genes have been





**FIGURE 7** Effect of inoculation method on disease symptoms inoculated with *Digitaria* pathotype Dig4-1. Diagram of the different inoculation sites (base and tip) in the roots (a) and the separation of the roots and mycelia by a 0.22- $\mu$ m filter membrane (b). (c) Disease symptoms in the root of rice cultivar Lijiangxintuanheigu inoculated with Dig4-1 using different inoculation methods (base, tip, and membrane). Arrows indicate brown lesions. (d) The growth length ratios compared to the control of roots inoculated with Dig4-1 using different inoculation methods (base, tip, and membrane). The root growth length ratios compared to the control (e) and crown root branch numbers (f) of CO39 rice roots inoculated with Guy11, Br48, and Dig4-1 with or without the use of a filter membrane. Control is no treatment. "-M" indicates treated with a 0.22- $\mu$ m filter membrane. The bars represent standard deviations calculated from three biological replicates. Different letters indicate significant differences between treatments (Tukey test,  $p < 0.05$ ).

reported to be constitutively expressed in leaves (Qu et al., 2006; Takahashi et al., 2010; Yuan et al., 2011; Zhou et al., 2006). We found that the expression of *Pish* was upregulated at 4 DAI. We also found that the expression of *Pish* and *Pik-p* in the roots was significantly increased by *P. oryzae* infection. These results suggest that *Pish* and *Pik-p* are induced by infection with *P. oryzae*, and the R genes appear to function in the roots as well as in the leaves.

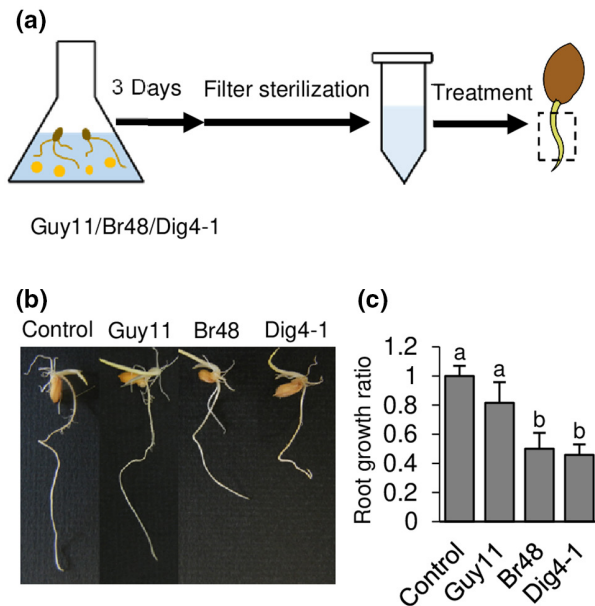
Most PR genes (except *OsLTP110*) were induced in roots infected with *P. oryzae*, indicating that disease-resistant reactions were active. In the comparison of leaves at 0 DAI, the expression of most PR genes in LTH monogenic lines was higher than that in LTH; therefore, it was considered a factor that increased leaf resistance. It was notable that *OsLTP110* was not induced by *P. oryzae* in the roots. In the control roots, the expression level of *OsLTP110* was high; therefore, it does not explain why the roots were susceptible to any *Pyricularia* pathotypes.

Regarding pathotype-genus specificity, PR-1 genes (*OsPR-1a*, *TaPR-1*, and *HvPR-1a*) in all plant species tested were induced on the leaves after infection with *Pyricularia* isolates, regardless of compatible/incompatible combinations. In particular, the expression levels of *OsPR-1a* and *TaPR-1* increased at the late stage of infection with the compatible combination. It was considered that the increase in the interaction between the infection hyphae and plant cells increased as the infection progressed. This might be related to the recognition of pathogen-associated molecular patterns, resulting in systemic or locally acquired resistance (Naveed et al., 2020). In root inoculation, PR-1 genes (*OsPR-1a*, *TaPR-1*, and *HvPR-1a*) in all plant species

tested were also induced after infection with *Pyricularia* isolates. Interestingly, the expression levels of *TaPR-1* and *HvPR-1a* differed among inoculation with different isolates. These results imply that the recognition system of *Pyricularia* isolates in the roots may differ between rice, wheat, and barley. Based on the above results, PR genes were induced in both the leaves and roots. We also observed ROS generation at the infection site, suggesting that the resistance reaction is triggered. Nevertheless, induced resistance could not prevent the invasion of *Pyricularia* isolates, which succeeded in invading root cells and extending hyphae. This finding is thought to be due to the fact that the roots have fewer physical barriers (cuticle layer and wax layer) and are more susceptible to microorganism infection than the leaves. Therefore, it is considered that the spread of infection hyphae precedes the resistance reaction of the plant.

### 3.3 | Infection strategies of *Pyricularia* isolates on roots

Root infections by *P. oryzae* have been reported to cause browning (Dufresne & Osbourn, 2001). In this study, we discovered that the isolates caused various degrees of disease in the roots, as indicated by the browning intensity, growth inhibition, and branching inhibition. These differences in infection modes may be reflected in the PR gene expression level such as *OsPR-1b*. These findings suggest that some *Pyricularia* isolates have evolved their characteristics in



**FIGURE 8** Culture filtrates of *Pyricularia* isolates Br48 and Dig4-1 cause root inhibition. (a) Diagram of the extraction method of the culture filtrates. The roots of CO39 rice were inoculated with mycelial plugs of Guy11, Br48, or Dig4-1 in sterile distilled water (SDW). Three days after inoculation (invasion state), the cultures were filtered and used as culture filtrates. (b) Disease symptoms after culture filtrate inoculation. (c) The root growth length ratio of CO39 in the control compared to culture filtrate inoculation groups. Control is rice roots inoculated with a filter paper soaked in SDW. The bars represent standard deviations calculated from three biological replications. Different letters indicate significant differences between treatments (Tukey test,  $p < 0.05$ ).

terms of pathogenicity. In rice roots, the infection hyphae of Guy11 were adept at expanding into the intercellular space. This is similar to the intercellular hyphae of arbuscular mycorrhizal or endophytic fungi (Paszkowski et al., 2002; Tanaka et al., 2006). Additionally, the infection hyphae of isolates Br48 and Dig4-1 had a unique distribution, that is, the infection hyphae accumulated abundantly in root cells and clustered in the outer layer of sclerenchymatous cells. This was also similar to the discovery that some ericoid mycorrhizal fungi infect roots (Bergero et al., 2000; Perotto et al., 2002). Such differences in the localization of infection hyphae in rice roots were not observed in barley and wheat roots. Rice roots have a well-developed sclerenchymatous layer, whereas barley and wheat roots do not. It has been reported that exodermis and sclerenchymatous cells were observed only at the root-shoot junction in wheat (Ouyang et al., 2020), and barley does not form an exodermis in hydroponics (Ranathunge et al., 2017). This result implies that the sclerenchyma layer may prevent the invasive hyphae of some *Pyricularia* isolates from invading the internal region of plant roots. Considering physical barriers during root infection, rice roots form special barriers that prevent radial oxygen loss (ROL), the so-called ROL barriers (Ejiri et al., 2021; Kotula et al., 2009). It has been reported that waterlogging-sensitive crops, such as barley and wheat, do not form ROL barriers (McDonald, Galwey, & Colmer, 2001; McDonald,

Galwey, Ellneskog-Staam et al., 2001). The ROL barrier is formed in the sclerenchyma layer. Because the rice roots used in this experiment did not fulfil the conditions for forming this ROL barrier, the rice might have shown stronger invasion resistance if this ROL barrier were formed. Root suberization also differs greatly among plant species, such as rice and barley (Kreszies et al., 2018). These differences may have led to the evolution of different root infection strategies in *Pyricularia* isolates.

In our preliminary inoculation tests with filter membranes and culture filtrates, the production of secondary metabolites by *Pyricularia* isolates might have also played a role in root growth and crown root branching inhibition. Browning and root growth/branching inhibition were independent reactions. This result suggests that direct contact with, or invasion of, root cells is essential for browning.

Root growth occurs at the root apical meristem. Inoculation of any root part caused root growth inhibition, suggesting that these secondary metabolites inhibited the growth of distant root apical meristems. Pyrichalasin H, a cytochalasin, is a pathogenicity factor in *P. grisea* that reduces resistance to avirulent *Pyricularia* isolates in crabgrass and inhibits root growth in barley (Meepagala et al., 2019; Tsurushima et al., 2005). Although pyrichalasin H is a candidate root growth inhibitor in *P. grisea* Dig4-1, *P. oryzae* Br48 has not been reported to produce this cytochalasin (Tsurushima et al., 2005). Multiple factors related to these substances are thought to be involved in the inhibition of root growth.

Dig4-1 inhibits crown root branching in rice. Crown root branching occurs in the crown, a meristem on the lowest node of the stem. Interestingly, isolate Dig4-1 affected both the root tip and crown. Crown root branching in rice is regulated by auxin and cytokinin signalling (Kitomi et al., 2011). The auxin pathway may be perturbed by infection with the Dig4-1 isolate.

These results suggest that secondary metabolites may have different effects on underground plant parts. These results indicate that the infection strategies of *Pyricularia* spp. in plant roots may be complex and diverse.

## 4 | EXPERIMENTAL PROCEDURES

### 4.1 | Plant materials

Seeds were placed in culture dishes (with filter paper), soaked in water, and left overnight for germination. Rice (cvs LTH and CO39) and LTH monogenic lines (Tsunematsu et al., 2000) were grown in seedling soil (King soil; Kasanen Industrial Co., Ltd.) for 12–14 days in a plant growth chamber at 26°C. Fertilization by adding 0.015%  $(\text{NH}_4)_2\text{SO}_4$  was performed 7 days after sowing. Wheat (cv. Norin 4) and barley (cv. Nigrate) were grown in vermiculite for 7 days in a plant growth chamber at 23°C. The artificial light/dark cycle in the plant growth chamber was 12/12h.

Seeds were placed on a filter paper in culture dishes and grown for 3–4 days. Roots that were elongated to 2–3 cm were used in the experiments.

## 4.2 | Inoculation methods

The isolates used in this study were Guy11 (*Oryza* pathotype), GFS1-7-2 (*Setaria* pathotype), MZ5-1-6 (*Eleusine* pathotype), Br48 (*Triticum* pathotype), and Dig4-1 (*Digitaria* pathotype).

### 4.2.1 | Leaf

The *Pyricularia* isolates were grown on oatmeal agar for 7 days (25°C), after which the aerial hyphae were removed and placed under black light blue (BLB) lamp for 5–7 days to form spores. SDW was then added to the spore-producing medium, and the fungal surfaces were rubbed with a spatula. The spore suspension was filtered using a Kimwipe S-200 (Cresia Corp.). The plant leaves were spray-inoculated with spore suspension ( $10^5$  spores/ml supplemented with 0.01% Tween-20), and the inoculated plants were incubated under humid conditions in the dark for 24 h and then moved to the plant growth chamber.

[Correction added on 17 August 2022, after first online publication: the lamp name has been updated to “black light blue” in this version.]

### 4.2.2 | Root

The *Pyricularia* isolates were grown on potato dextrose agar (PDA) for 7 days (25°C), and then the roots of the plants were directly inoculated with mycelial plugs (approximately  $1\text{ cm}^2$ ). The inoculated roots were incubated on a filter paper in culture dishes (9 cm diameter), which were maintained under moist conditions supplemented with 3 ml of SDW. To separate the roots and hyphae, inoculation was performed using a 0.22- $\mu\text{m}$  pore filter membrane.

### 4.2.3 | Inoculation of roots with culture filtrates

Mycelia of *Pyricularia* isolates (grown on PDA) were placed at the bottom of a 300-ml conical flask containing 50 ml SDW. Next, three to five rice roots were placed on the mycelia. After 3 days of incubation, the aqueous solution was collected and filtered through a 0.22- $\mu\text{m}$  pore filter. A sterilized filter paper ( $1\text{ cm}^2$ ) was placed over the root, and 100  $\mu\text{l}$  of the culture filtrates was dripped over the filter paper to moisten it.

## 4.3 | Root section observation

The inoculated roots were cut into 5-mm pieces and fixed with 2.5% glutaraldehyde (Nissin EM) in 0.1 M phosphate buffer (pH 7.4) at 25°C for 1 h. The pieces were rinsed with phosphate buffer three times at 10-min intervals and then fixed with 1% buffered osmium tetroxide (Nissin EM) at 25°C for 1 h. The samples were briefly rinsed with SDW and then immediately dehydrated in an ethanol series (70%, 90%, and three times 100%). The samples were immersed

in an intermediate solvent, propylene oxide (Nissin EM), for 10 min and in a mixture (1:1, vol/vol) of propylene oxide and Spurr's resin (Polysciences) for 6 h at 25°C and then placed in pure Spurr's resin at 4°C for 3 days. After that, the specimens were embedded in a plain embedding plate and polymerized at 70°C for 24 h.

The root blocks were cut using a Porter-Blum MT-1 ultramicrotome (Ivan Sorvall) and a diamond knife (Diatome) into approximately 300-nm-thick sections. Each section was then transferred to a water droplet on a glass slide using a platinum loop. The water on the glass slide was evaporated on a hot plate maintained at approximately 200°C, and toluidine blue (0.5% toluidine blue, 0.5% borax) stain was added. The sample was heated again for 30 s and then washed with SDW to remove excess stain. Finally, the glass slides were observed under a light microscope (Biorevo BZ-9000; Keyence).

## 4.4 | Gene expression analysis

Frozen leaf or root samples were ground using a mortar and pestle with liquid nitrogen to obtain a powder. The powders were suspended in Sepasol-RNA I Super G (Nacalai Tesque Inc.), and total RNA was extracted according to the manufacturer's instructions. The extracted total RNA was stored at  $-80^\circ\text{C}$ .

One microgram of the total RNA was reverse-transcribed using ReverTra Ace qPCR RT Master Mix with gDNA Remover (Toyobo) to obtain cDNA. The reaction mixtures were incubated at 37°C for 15 min, 50°C for 5 min, and 98°C for 5 min, and finally maintained at  $-20^\circ\text{C}$ .

Quantitative PCR (qPCR) analysis was conducted using KOD SYBR qPCR Mix (Toyobo) (20  $\mu\text{l}$  reaction volume containing 0.2  $\mu\text{M}$  of each primer and 1  $\mu\text{l}$  of cDNA) on a thermal cycler Dice Real-Time System model TP850 (TaKaRa). The primers used in this study are listed in Table S1. The primers were designed using Primer3plus (v. 2.4.2; <https://primer3plus.com/cgi-bin/dev/primer3plus.cgi>) and verified using Primer-BLAST in NCBI. The target gene information involved in this study was provided by the NCBI search database (<https://www.ncbi.nlm.nih.gov/>). Housekeeping genes for rice (*OsActin*: Os11g0163100) (Kano et al., 2010), wheat (*TaCDPC*: Ta54227) (Takumi et al., 2017), and barley (*HvActin*: AY145451.1) were used as internal standards. Relative expression levels were calculated using the  $2^{-\Delta\Delta\text{Ct}}$  method. Three biological replicates were analysed independently.

## 4.5 | Analysis of ROS generation in roots

Rice roots were cut into 1–2 cm lengths and dipped in 1 mg/ml DAB dissolved in 50 mM Tris-HCl (pH 7.5). The specimens were decompressed using a vacuum pump and the reagent was infiltrated into the roots and incubated for 2 h. The specimens of whole roots and cross-sections were observed under a light microscope (Biorevo BZ-9000).

## 4.6 | Disease evaluation

In the leaf inoculation experiment, the disease index was determined as follows: 5 (disease symptoms appeared on the entire leaf at 6 DAI), 4 (70% lesion area of index 5), 3 (50% of index 5), 2 (30% of index 5), 1 (10% of index 5, including resistant brown lesions), and 0 (no symptoms).

Disease symptoms on the roots were transformed into data for evaluation, which were divided into colour index, root branching number, and root growth ratio. Three independent biological replicates were used for each experiment.

For objective comparison, we used the pixel intensity to digitize the degree of browning. Photographs of the roots were converted to monochromatic images and then inverted, so the browning part of the root was lighter and the healthy part of the root was darker. We used a colour sampler tool to read the greyscale of the browning parts ( $G_B$ ) and normal parts ( $G_N$ ) and then determined the browning degree by calculating  $\frac{G_B}{G_N}$ . The number of crown root branches was defined as the number of crown roots at 3 DAI minus that at 0 DAI:

$$\text{Growth} = \text{root length (3 DAI)} - \text{root length (0 DAI)}.$$

The root growth ratio was calculated by dividing the root growth in the fungal treatment group ( $\text{Growth}_t$ ) by that in the control group ( $\text{Growth}_c$ ):

$$\text{Root growth ratio} = \frac{\text{Growth}_t}{\text{Growth}_c}.$$

## 4.7 | Data analysis

Data from each experiment were analysed by one-way analysis of variance using IBM SPSS (v. 28.0). Multiple comparisons were performed using Tukey's test ( $p \leq 0.05$ ).

## ACKNOWLEDGEMENTS

This research was supported by a grant, "International collaborative research project for solving global issues", from the Agriculture, Forestry and Fisheries Research Council Secretariat, Ministry of Agriculture, Forestry and Fisheries (MAFF), Japan, and by JST SPRING, grant JPMJSP2148. We would like to thank Editage ([www.editage.com](http://www.editage.com)) for English language editing.

## DATA AVAILABILITY STATEMENT

The data that support the finding of this study are available from the corresponding author upon reasonable request.

## ORCID

Kenichi Ikeda  <https://orcid.org/0000-0003-2080-3356>

## REFERENCES

Bergero, R., Perotto, S., Girlanda, M., Vidano, G. & Luppi, A.M. (2000) Ericoid mycorrhizal fungi are common root associates of a Mediterranean ectomycorrhizal plant (*Quercus ilex*). *Molecular Ecology*, 9, 1639–1649.

Dufresne, M. & Osbourn, A.E. (2001) Definition of tissue-specific and general requirements for plant infection in a phytopathogenic fungus. *Molecular Plant-Microbe Interactions*, 14, 300–307.

Ejiri, M., Fukao, T., Miyashita, T. & Shiono, K. (2021) A barrier to radial oxygen loss helps the root system cope with waterlogging-induced hypoxia. *Breeding Science*, 71, 40–50.

Hayashi, N. (2005) *Rice blast fungus, MAFF microorganism genetic resources manual No. 18*. Tsukuba, Ibaraki: National Institute of Agrobiological Sciences.

Howard, R.J. & Ferrari, M.A. (1989) Role of melanin in appressorium function. *Experimental Mycology*, 13, 403–418.

Howard, R.J., Ferrari, M.A., Roach, D.H. & Money, N.P. (1991) Penetration of hard substrates by a fungus employing enormous turgor pressures. *Proceedings of the National Academy of Sciences of the United States of America*, 88, 11281–11284.

Ikeda, K., Park, P. & Nakayashiki, H. (2019) Cell biology in phytopathogenic fungi during host infection: commonalities and differences. *Journal of General Plant Pathology*, 85, 163–173.

Inoue, Y., Vy, T.T.P., Yoshida, K., Asano, H., Mitsuoka, C., Asuke, S. et al. (2017) Evolution of the wheat blast fungus through functional losses in a host specificity determinant. *Science*, 357, 80–83.

Jones, J.D.G. & Dangl, J.L. (2006) The plant immune system. *Nature*, 444, 323–329.

Jung, G.Y., Park, J.Y., Choi, H.J., Yoo, S.-J., Park, J.-K. & Jung, H.W. (2016) A rice gene homologous to *Arabidopsis* AGD2-LIKE DEFENSE1 participates in disease resistance response against infection with *Magnaporthe oryzae*. *The Plant Pathology Journal*, 32, 357–362.

Kano, A., Gomi, K., Yamasaki-Kokudo, Y., Satoh, M., Fukumoto, T., Ohtani, K. et al. (2010) A rare sugar, D-allose, confers resistance to rice bacterial blight with upregulation of defense-related genes in *Oryza sativa*. *Phytopathology*, 100, 85–90.

Kato, H., Yamamoto, M., Yamaguchi-Ozaki, T., Kadouchi, H., Iwamoto, Y., Nakayashiki, H. et al. (2000) Pathogenicity, mating ability and DNA restriction fragment length polymorphisms of *Pyricularia* populations isolated from Gramineae, Bambusoideae and Zingiberaceae plants. *Journal of General Plant Pathology*, 66, 30–47.

Kitomi, Y., Ito, H., Hobo, T., Aya, K., Kitano, H. & Inukai, Y. (2011) The auxin responsive AP2/ERF transcription factor CROWN ROOTLESS5 is involved in crown root initiation in rice through the induction of OsRR1, a type-a response regulator of cytokinin signaling. *The Plant Journal*, 67, 472–484.

Kotula, L., Ranathunge, K. & Steudle, E. (2009) Apoplastic barriers effectively block oxygen permeability across outer cell layers of rice roots under deoxygenated conditions: roles of apoplastic pores and of respiration. *New Phytologist*, 184, 909–917.

Kreszies, T., Schreiber, L. & Ranathunge, K. (2018) Suberized transport barriers in *Arabidopsis*, barley and rice roots: from the model plant to crop species. *Journal of Plant Physiology*, 227, 75–83.

Levine, A., Tenhaken, R., Dixon, R. & Lamb, C.J. (1994)  $H_2O_2$  from the oxidative burst orchestrates the plant hypersensitive disease resistance response. *Cell*, 79, 583–593.

Li, W., Wang, B., Wu, J., Lu, G., Hu, Y., Zhang, X. et al. (2009) The *Magnaporthe oryzae* avirulence gene *AvrPiz-t* encodes a predicted secreted protein that triggers the immunity in rice mediated by the blast resistance gene *Piz-t*. *Molecular Plant-Microbe Interactions*, 22, 411–420.

Li, J., Wang, Q., Li, C., Bi, Y., Fu, X. & Wang, R. (2019) Novel haplotypes and networks of AVR-Pik alleles in *Magnaporthe oryzae*. *BMC Plant Biology*, 19, 204.

Manandhar, H.K., Mathur, S.B., Smedegaard-Petersen, V. & Thordal-Christensen, H. (1999) Accumulation of transcripts for pathogenesis-related proteins and peroxidase in rice plants triggered by *Pyricularia oryzae*, *Bipolaris sorokiniana* and UV light. *Physiological and Molecular Plant Pathology*, 55, 289–295.

Marcel, S., Sawers, R., Oakeley, E., Angliker, H. & Paszkowski, U. (2010) Tissue-adapted invasion strategies of the rice blast fungus *Magnaporthe oryzae*. *The Plant Cell*, 22, 3177–3187.

McDonald, M.P., Galwey, N.W. & Colmer, T.D. (2001) Waterlogging tolerance in the tribe Triticeae: the adventitious roots of *Critesion maritimum* have a relatively high porosity and a barrier to radial oxygen

- loss: root aeration in species from the tribe Triticeae. *Plant, Cell & Environment*, 24, 585–596.
- McDonald, M.P., Galwey, N.W., Ellneskog-Staam, P. & Colmer, T.D. (2001) Evaluation of *Lophopyrum elongatum* as a source of genetic diversity to increase the waterlogging tolerance of hexaploid wheat (*Triticum aestivum*). *New Phytologist*, 151, 369–380.
- Meepagala, K.M., Clausen, B.M., Johnson, R.D., Wedge, D.E. & Duke, S.O. (2019) A phytotoxic and antifungal metabolite (pyrichalasin H) from a fungus infecting *Brachiaria eruciformis* (signal grass). *Journal of Agricultural Chemistry and Environment*, 08, 115–128.
- Muhae-Ud-Din, G., Chen, D., Liu, T., Chen, W. & Gao, L. (2020) Characterization of the wheat cultivars against *Tilletia controversa* Kühn, causal agent of wheat dwarf bunt. *Scientific Reports*, 10, 9029.
- Murata, N., Aoki, T., Kusaba, M., Tosa, Y. & Chuma, I. (2014) Various species of *Pyricularia* constitute a robust clade distinct from *Magnaporthe salvinii* and its relatives in Magnaporthaceae. *Journal of General Plant Pathology*, 80, 66–72.
- Naveed, Z.A., Wei, X., Chen, J., Mubeen, H. & Ali, G.S. (2020) The PTI to ETI continuum in *Phytophthora* plant interactions. *Frontiers in Plant Science*, 11, 593905.
- Ouyang, W., Yin, X., Yang, J. & Struik, P.C. (2020) Comparisons with wheat reveal root anatomical and histochemical constraints of rice under water-deficit stress. *Plant and Soil*, 452, 547–568.
- Paszkowski, U., Kroken, S., Roux, C. & Briggs, S.P. (2002) Rice phosphate transporters include an evolutionarily divergent gene specifically activated in arbuscular mycorrhizal symbiosis. *Proceedings of the National Academy of Sciences of the United States of America*, 99, 13324–13329.
- Perotto, S., Girlanda, M. & Martino, E. (2002) Ericoid mycorrhizal fungi: some new perspectives on old acquaintances. In: Smith, S.E. & Smith, F.A. (Eds.) *Diversity and integration in mycorrhizas*. Dordrecht: Springer Netherlands, pp. 41–53.
- Qu, S., Liu, G., Zhou, B., Bellizzi, M., Zeng, L., Dai, L. et al. (2006) The broad-spectrum blast resistance gene *Pi9* encodes a nucleotide-binding site-leucine-rich repeat protein and is a member of a multi-gene family in rice. *Genetics*, 172, 1901–1914.
- Ranathunge, K., Kim, Y.X., Wassmann, F., Kreszies, T., Zeisler, V. & Schreiber, L. (2017) The composite water and solute transport of barley (*Hordeum vulgare*) roots: effect of suberized barriers. *Annals of Botany*, 119, 629–643.
- Sesma, A. & Osbourn, A.E. (2004) The rice leaf blast pathogen undergoes developmental processes typical of root-infecting fungi. *Nature*, 431, 582–586.
- Takahashi, A., Hayashi, N., Miyao, A. & Hirochika, H. (2010) Unique features of the rice blast resistance *Pish* locus revealed by large scale retrotransposon-tagging. *BMC Plant Biology*, 10, 175.
- Takumi, S., Okada, M., Michikawa, A., Miki, Y. & Yoshida, K. (2017) High-quality RNA isolation from wheat immature grains. *Wheat Information Service*, 124, 4.
- Tanaka, A., Christensen, M.J., Takemoto, D., Park, P. & Scott, B. (2006) Reactive oxygen species play a role in regulating a fungus-perennial ryegrass mutualistic interaction. *The Plant Cell*, 18, 1052–1066.
- Thines, E., Weber, R.W.S. & Talbot, N.J. (2000) MAP kinase and protein kinase A-dependent mobilization of triacylglycerol and glycogen during appressorium turgor generation by *Magnaporthe grisea*. *The Plant Cell*, 12, 1703–1718.
- Tian, L., Shi, S., Nasir, F., Chang, C., Li, W., Tran, L.-S.P. et al. (2018) Comparative analysis of the root transcriptomes of cultivated and wild rice varieties in response to *Magnaporthe oryzae* infection revealed both common and species-specific pathogen responses. *Rice*, 11, 26.
- Tosa, Y. & Chuma, I. (2014) Classification and parasitic specialization of blast fungi. *Journal of General Plant Pathology*, 80, 202–209.
- Tosa, Y., Osue, J., Eto, Y., Oh, H.-S., Nakayashiki, H., Mayama, S. et al. (2005) Evolution of an avirulence gene, *AVR1-CO39*, concomitant with the evolution and differentiation of *Magnaporthe oryzae*. *Molecular Plant-Microbe Interactions*, 18, 1148–1160.
- Tsunematsu, H., Yanoria, M.J.T., Ebron, L.A., Hayashi, N., Ando, I., Kato, H. et al. (2000) Development of monogenic lines of rice for blast resistance. *Breeding Science*, 50, 229–234.
- Tsurushima, T., Don, L.D., Kawashima, K., Murakami, J., Nakayashiki, H., Tosa, Y. et al. (2005) Pyrichalasin H production and pathogenicity of *Digitaria*-specific isolates of *Pyricularia grisea*. *Molecular Plant Pathology*, 6, 605–613.
- Tucker, S.L., Besi, M.I., Galhano, R., Franceschetti, M., Goetz, S., Lenhart, S. et al. (2010) Common genetic pathways regulate organ-specific infection-related development in the rice blast fungus. *The Plant Cell*, 22, 953–972.
- Wang, Y., Zhao, J., Zhang, L., Wang, P., Wang, S., Wang, H. et al. (2016) Analysis of the diversity and function of the alleles of the rice blast resistance genes *Piz-t*, *Pita* and *Pik* in 24 rice cultivars. *Journal of Integrative Agriculture*, 15, 1423–1431.
- Wilson, R.A. & Talbot, N.J. (2009) Under pressure: investigating the biology of plant infection by *Magnaporthe oryzae*. *Nature Reviews Microbiology*, 7, 185–195.
- Wu, Y., Xiao, N., Yu, L., Pan, C., Li, Y., Zhang, X. et al. (2015) Combination patterns of major R genes determine the level of resistance to the *M. oryzae* in rice (*Oryza sativa* L.). *PLoS One*, 10, e0126130.
- Yuan, B., Zhai, C., Wang, W., Zeng, X., Xu, X., Hu, H. et al. (2011) The *Pik-p* resistance to *Magnaporthe oryzae* in rice is mediated by a pair of closely linked CC-NBS-LRR genes. *Theoretical and Applied Genetics*, 122, 1017–1028.
- Zhou, B., Qu, S., Liu, G., Dolan, M., Sakai, H., Lu, G. et al. (2006) The eight amino-acid differences within three leucine-rich repeats between *Pi2* and *Piz-t* resistance proteins determine the resistance specificity to *Magnaporthe grisea*. *Molecular Plant-Microbe Interactions*, 19, 1216–1228.

## SUPPORTING INFORMATION

Additional supporting information can be found online in the Supporting Information section at the end of this article.

**How to cite this article:** Xiang, Z., Okada, D., Asuke, S., Nakayashiki, H. & Ikeda, K. (2022) Novel insights into host specificity of *Pyricularia oryzae* and *Pyricularia grisea* in the infection of gramineous plant roots. *Molecular Plant Pathology*, 23, 1658–1670. Available from: <https://doi.org/10.1111/mpp.13259>