

Predictive Effect of Triglyceride-Glucose Index on Adverse Prognostic Events in Patients with Type 2 Diabetes Mellitus and Ischemic Cardiomyopathy

Baiheremujiang Abuduaini^{1,*}, Long Yang^{2,*}, Nueraihemaiti Jiamali¹, Zulihuma Seyiti², Xue-Feng Shan³⁻⁵, Xiao-Ming Gao⁴⁻⁶

¹First Clinical Medical College, Xinjiang Medical University, Urumqi, People's Republic of China; ²College of Pediatrics, Xinjiang Medical University, Urumqi, People's Republic of China; ³Pediatric Cardiothoracic Surgery, First Affiliated Hospital of Xinjiang Medical University, Urumqi, People's Republic of China; ⁴State Key Laboratory of Pathogenesis, Prevention, and Treatment of High Incidence Diseases in Central Asia, Department of Cardiology of the First Affiliated Hospital of Xinjiang Medical University, Urumqi, People's Republic of China; ⁵Xinjiang Key Laboratory of Medical Animal Model Research, Urumqi, People's Republic of China; ⁶Clinical Medical Research Institute of Xinjiang Medical University, Urumqi, People's Republic of China

*These authors contributed equally to this work

Correspondence: Xiao-Ming Gao, State Key Laboratory of Pathogenesis, Prevention, and Treatment of High Incidence Diseases in Central Asia, 137 Liyushan South Road, Urumqi, 830054, People's Republic of China, Tel/Fax +86-991-4362844, Email xiaominggao2017@163.com; Xue-Feng Shan, Pediatric cardiothoracic Surgery, First Affiliated Hospital of Xinjiang Medical University, 137 Liyushan South Road, Urumqi, 830054, People's Republic of China, Tel/Fax +86-991-4362844, Email xuefengShan1982@163.com

Background: The triglyceride-glucose (TyG) index is regarded as an independent predictor of cardiovascular (CV) consequences and a reliable surrogate measure of insulin resistance (IR). However, the predictive significance of the TyG index in patients with type 2 diabetes mellitus (T2DM) and ischemic cardiomyopathy (ICM) remains unknown.

Methods: This study included 1514 consecutive subjects with ICM and T2DM. The tertile of the TyG index values was used to categorize these patients into three groups. Major adverse cardiac and cerebral events (MACCEs) were also noted. The TyG index was calculated using the $[\text{fasting triglycerides (mg/dL)} \times \text{fasting plasma glucose (mg/dL)} / 2]$ equation.

Results: After adjusting for age, BMI, and other potential confounders, the scores of multivariate Cox proportional hazards regression models for chest pain [9.056 (4.370 to 18.767), $p < 0.001$], acute myocardial infarction [4.437 (1.420 to 13.869), $p = 0.010$], heart failure [7.334 (3.424 to 15.708), $p < 0.001$], cardiogenic shock [3.707 (1.207 to 11.384), $p = 0.022$], malignant arrhythmia [5.309 (2.367 to 11.908), $p < 0.001$], cerebral infarction [3.127 (1.596 to 6.128), $p < 0.001$], gastrointestinal bleeding [4.326 (1.612 to 11.613), $p = 0.004$], all-cause death [4.502 (3.478 to 5.827), $p < 0.001$] and cumulative incidence of MACCEs [4.856 (3.842 to 6.136), $p < 0.001$] increased significantly with an increase in TyG index levels (all $p < 0.05$). Time-dependent ROC analysis revealed that the area under the TyG index curve (AUC) reached 0.653 in the 3rd year, 0.688 in the 5th year, and 0.764 in the 10th year. The predictive efficiency of this model on MACCEs improved [net reclassification improvement (NRI): 0.361 (0.253 to 0.454); C-index: 0.678 (0.658 to 0.698); integrated discrimination improvement (IDI): 0.138 (0.098 to 0.175), all $p < 0.05$] following the incorporation of the TyG index into the base risk model.

Conclusion: TyG index could be useful in predicting MACCEs and initiating preventive measures in subjects with ICM and T2DM.

Keywords: insulin resistance, triglyceride-glucose index, type 2 diabetes mellitus, ischemic cardiomyopathy, major adverse cardiac and cerebral events

Introduction

Coronary artery disease (CAD) is now recognized as a major cause of disability and mortality in modern society.¹ It is also a major cause of heart failure (HF).² Ischemic cardiomyopathy (ICM) is linked to myocardial insufficiency and inadequate perfusion caused by obstructive CAD.³ Furthermore, end-stage HF frequently stems from ICM, which can result in a significant decrease in the left ventricular ejection fraction (LVEF).^{4,5}

HF refers to clinical syndromes characterized by pulmonary and/or body circulation stasis. Because of its high morbidity and mortality,^{6,7} HF has become a significant contributor to mortality worldwide and a pressing health concern.⁸ As a result, early prevention and diagnosis of HF are critical for mitigating relevant symptoms and improving the prognosis of these patients.

Studies have shown that type 2 diabetes mellitus (T2DM) influences the cardiovascular system in a variety of ways; for instance, it may increase the risk of CAD by affecting both major and minor blood vessels.⁹ An abnormal glucose metabolic status is common in patients with coronary syndromes, and about one-third of patients with coronary syndromes have DM. Moreover, research has consistently demonstrated that DM is a major contributor to cardiovascular diseases (CVDs).¹⁰ A subset of studies suggest that ICM patients who also have DM have a higher mortality rate than those without DM.¹¹ Of note, type 2 diabetes mellitus (T2DM) patients are at higher risk of developing ICM, HF, stroke, CVDs, and peripheral arterial disease.¹² Identifying other risk factors in ICM patients with T2DM has clinical implications for developing novel treatment targets and risk suppressor approaches based on individual risk levels.

Insulin resistance (IR), defined as a reduced response to insulin, is a significant contributor to CVDs and can be used to predict serious cardiovascular and cerebral incidents (MACCEs).¹³ IR plays a vital role in T2DM pathogenesis, and several studies have shown that IR is significantly associated with an increased risk of MACCEs.^{14–16} Although the hyperinsulin-hyperglycemic clamp is recognized as the best method for assessing IR, the complex testing procedures limit its application in clinical settings.¹⁷

The TyG index, which is calculated from fasting plasma glucose (FPG) and triglycerides (TG), has been proposed as a clinically reliable biomarker of IR.¹⁸ In addition, clinical investigations have confirmed the link between CVD prognosis and prevalence and the TyG index.^{19,20} The TyG index was found to be an accurate predictor of prognosis in a study of patients with T2DM and non-ST-segment elevation acute coronary syndrome.²¹ Another recent study found that the TyG index could be a significant warning sign of potential cardiovascular adverse events in patients with T2DM and acute myocardial infarction.²² Meanwhile, recent studies have confirmed that the TyG index can be used to assess the presence of IR and nonalcoholic fatty liver disease in patients with bladder cancer.²³ However, the ability of the TyG index to predict MACCEs in subjects with ICM and T2DM has not been thoroughly examined. Therefore, this investigation aims to discover whether the TyG index can accurately predict MACCEs in patients with ICM and T2DM.

Materials and Methods

Study Population

This study included 3757 patients with ischemic cardiomyopathy based on medical records and follow-up registrations at the First Affiliated Hospital of Xinjiang Medical University between December 2009 and November 2021. Exclusion criteria were as follows: (1) patients with no T2DM; (2) patients with severe acute infection, malignancy, severe liver dysfunction, severe renal dysfunction, and suspected familial hypertriglyceridemia [$TG \geq 5.65$ mmol/L]; (3) patients with a history of coronary artery bypass, congenital heart disease or severe valvular requiring cardiac surgery. (4) Patients with incomplete clinical or follow-up data. The study excluded 2243 patients based on the exclusion criteria. Finally, 1514 patients were enrolled in this study. Medical records and/or a telephone interview with patients or their family members were used to determine the short or long-term prognosis of patients. Studies involving human participants were reviewed and approved by the Ethics Committee of the First Affiliated Hospital of Xinjiang Medical University (approval number: S220722-25) and followed the Declaration of Helsinki. Patients/participants provided written informed consent for their participation in this study. Individuals provided written informed consent for the publication of any potentially identifiable images or data included herein. [Figure 1](#) shows the flow chart for participant inclusion and exclusion.

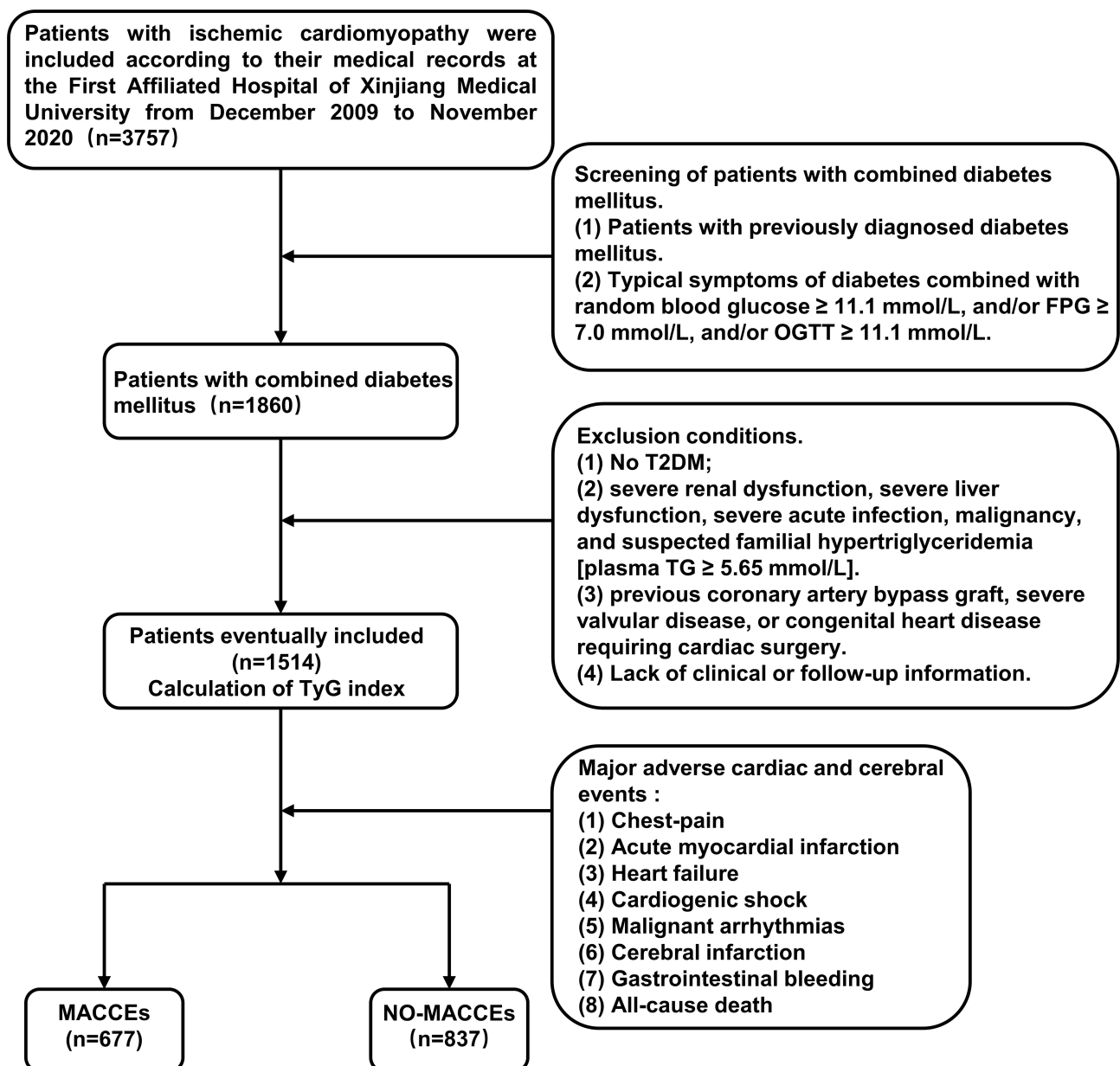


Figure 1 Flow chart of the study population enrollment.

Abbreviations: TyG, triglyceride glucose; FPG, fasting plasma glucose; TG, triglycerides; OGTT, Oral Glucose Tolerance Test; T2DM, type 2 diabetes mellitus; MACCEs, Major adverse cardiac and cerebral events.

Data Collection and Diagnostic Criteria

The data collection procedure was approved review committee of the First Affiliated Hospital of Xinjiang Medical University. Demographic and clinical information of patients, such as their age, gender, weight, height, medical history, family history, blood pressure, and the frequency of the medical visits were obtained from the medical data record system. The body mass index (BMI) was calculated using the following formula: weight (kg)/ [height (m)]². The TyG index was calculated in the central lab of the First Affiliated Hospital of Xinjiang Medical University as $\ln [TG \text{ (mg/dL)} \times FPG \text{ (mg/dL)} / 2]$ ¹⁸ based on the amounts of TG and FPG in the first fasting blood samples obtained at least 10 h during the hospitalization.

Patients with any of the following conditions were assessed for ICM: Prior myocardial infarction (MI) (recorded medical history, elevated series of cardiac markers, and ECG values along with MI); history of coronary revascularization; coronary angiographic flow-limiting stenosis ($\geq 50\%$ epicardial artery stenosis); reversible ischemia or MI detected

on stress echocardiography or stress nuclear perfusion imaging. Individuals who did not meet any of the aforementioned criteria were excluded from ICM diagnosis.²⁴ The diagnostic criteria for T2DM included (1) a previous diagnosis of T2DM on antidiabetic medication and (2) typical DM symptoms with FPG ≥ 7.0 mmol/L and/or random blood glucose (RBG) ≥ 11.1 mmol/L and/or oral glucose tolerance test (OGTT) ≥ 11.1 mmol/L.²⁵

MACCEs included: chest pain, acute myocardial infarction, heart failure, cardiogenic shock, malignant arrhythmias, cerebral infarction, gastrointestinal bleeding, all-cause death.

Statistical Analysis

Continuous variables were represented using the median (IQR). The Mann–Whitney *U*-test was used to compare the two study groups. The Pearson chi-square analysis or Fisher's exact test was employed to compare categorical variables, which were expressed as percentages and numbers. Additionally, the χ^2 test was employed for comparison between the groups. The study participants were classified based on the tertile of TyG index values and the frequency of MACCEs during follow-up. The correlation of the TyG index with traditional cardiovascular risk factors was examined using Spearman correlation analysis. The Log rank test was used to determine the relevant significance after plotting the Kaplan-Meier survival curves. Multivariate models included baseline factors that are clinically relevant and significantly linked to MACCEs according to univariate analysis. Furthermore, the relationship between the variables was investigated using multivariate analysis. A priori assessment of clinicopathological variables associated with recurrence risk and survival was performed based on clinical significance, scientific understanding, and predictors discovered in previously published papers.

The independent prognostic function of the TyG index for each MACCE was verified using Cox proportional hazards regression models.

Additionally, receiver-operating characteristic (ROC) curve analysis was performed to determine the best cutoff value for the TyG index for predicting MACCEs. The net reclassification improvement (NRI) was estimated to determine the level at which the TyG index addition improved the original predictive ability of the risk model. IBM SPSS Statistics 24 and the R programming language (version 4.0; <http://www.r-project.org>) were employed for all statistical procedures. A two-tailed *p*-value < 0.05 denoted statistical significance.

Results

Baseline Characteristics

This study eventually included 1514 individuals with ICM and T2DM, 1119 of whom were men (73.9%), with an average age of 65.26 years and a standard deviation of 10.036. [Table 1](#) depicts the baseline characteristics of the overall population, grouped based on MACCEs occurrence. Patients in the MACCE group had higher scores in terms of the TyG index, age, SBP, alkaline phosphatase (ALP), low-density lipoprotein-cholesterol (LDL-C), neutrophils, platelet (PLT), white blood cell (WBC), uric acid (UA), FPG, creatinine (Cr), TG, total cholesterol (TC) than the non-MACCE group ($p < 0.05$). In contrast, the MACCEs group had significantly lower scores in terms of the levels of LVEF, high-density lipoprotein-cholesterol (HDL-C), and total bilirubin (TBil) than the non-MACCEs group ($p < 0.05$). Furthermore, the MACCEs group had a substantially higher rate of smoking than the non-MACCEs group. ($p < 0.05$).

Participants were divided into three groups based on their TyG index tertile (Tertile 1: $n=509$, TyG index ≤ 7.21 ; Tertile 2: $n=500$, $7.21 < \text{TyG index} < 7.89$; Tertile 3: $n=505$, TyG index ≥ 7.89) ([Table 2](#)). The three groups had significant differences in terms of gender, ethnicity, TyG index, age, levels of BMI, WBC, neutrophils, TG, HDL-C, LDL-C, PLT, UA, TC, FPG, TBil, ALP, LVEF and Antiplatelet agents, Beta-blocker, oral hypoglycemic agents, and insulin use frequency but no other indexes were statistically different ($p > 0.05$).

Correlations Between the TyG Index and Cardiovascular Risk Factors

Spearman correlation was used to examine the correlation between cardiovascular risk factors and the TyG index. The TyG index was positively correlated with SBP, WBC, BMI, neutrophil, lymphocyte, red blood cell (RBC), PLT, LDL-C, TC, aspartate transferase (AST), and ALP ($p < 0.05$) ([Table 3](#)) but negatively correlated with age, UA, LVEF, TBil, and HDL-C.

Table 1 Baseline Characteristics of the Study Population According to the Occurrence of MACCEs

Characteristic	Total (n=1514)	NO-MACCEs (n=837)	MACCEs (n=677)	P
Male, n (%)	1119 (73.9%)	633 (75.6%)	486 (71.8%)	0.091
Ethnicity, n (%)				
Han	791 (52.2%)	453 (54.1%)	338 (49.9%)	0.262
Uyghur	537 (35.5%)	292 (34.9%)	245 (36.2%)	
Kazah	48 (3.2%)	24 (2.9%)	24 (3.6%)	
Other	138 (9.1%)	68 (8.1%)	70 (10.3%)	
Smoking, n (%)	620 (40.9%)	319 (38.1%)	301 (44.5%)	0.013
Drinking, n (%)	401 (26.5%)	228 (27.2%)	173 (25.6%)	0.460
HT his, n (%)	1024 (67.6%)	558 (66.7%)	466 (68.8%)	0.370
TyG-Index	7.53 (7.06–8.13)	7.22 (6.76–7.79)	8.04 (7.43–8.51)	<0.001
Age, years	66 (58–73)	65 (57–73)	67 (59–74)	<0.001
BMI, kg/m ²	25.71 (23.38–28.44)	25.81 (23.44–28.53)	25.61 (23.14–28.38)	0.403
SBP, mmHg	122 (110–139)	120 (110–138)	125 (111–140)	0.048
DBP, mmHg	74 (66–81)	74 (66–82)	75 (66–80)	0.995
WBC, 10 ⁹ /L	7.27 (5.91–8.77)	7.13 (5.81–8.61)	7.45 (6.07–9.10)	<0.001
Neutrophil, 10 ⁹ /L	4.67 (3.68–5.95)	4.56 (3.57–5.75)	4.86 (3.80–6.29)	<0.001
Lymphocyte, 10 ⁹ /L	1.62 (1.20–2.09)	1.64 (1.20–2.10)	1.58 (1.17–2.07)	0.114
RBC, 10 ⁹ /L	4.40 (3.93–4.81)	4.40 (3.98–4.83)	4.40 (3.90–4.81)	0.427
PLT, 10 ⁹ /L	201.0 (162.0–249.0)	195.0 (158.0–247.0)	208.0 (166.5–252.0)	0.010
Cr, umol/L	91.0 (73.0–118.3)	87.0 (71.0–114.0)	97.5 (77.0–126.7)	<0.001
UA, umol/L	379.20 (301.00–480.03)	369.50 (297.76–465.00)	393.00 (303.38–495.00)	0.039
FPG, mmol/L	8.10 (5.98–11.97)	6.67 (5.27–9.29)	10.32 (7.57–14.38)	<0.001
TG, mmol/L	1.31 (0.96–1.83)	1.16 (0.82–1.60)	1.58 (1.15–2.27)	<0.001
HDL-C, mmol/L	0.88 (0.71–1.07)	0.89 (0.72–1.09)	0.87 (0.70–1.04)	<0.001
LDL-C, mmol/L	2.16 (1.65–2.76)	2.09 (1.58–2.66)	2.22 (1.73–2.84)	<0.001
TC, mmol/L	3.44 (2.78–4.11)	3.28 (2.68–3.95)	3.57 (2.98–4.34)	<0.001
TBil, umol/L	13.50 (9.50–19.61)	14.3 (9.84–20.25)	12.6 (9.31–18.68)	<0.001
Albumin, g/L	36.60 (32.70–40.20)	36.82 (33.10–40.48)	36.22 (32.30–40.00)	0.051
ALT, U/L	19.70 (15.10–28.80)	19.80 (15.00–28.10)	19.60 (15.20–29.83)	0.317
AST, U/L	19.50 (13.48–30.08)	19.30 (13.40–29.75)	19.80 (13.69–31.02)	0.233
LDH, U/L	199.85 (167.00–242.7)	198.00 (167.00–236.64)	202.00 (166.86–254.12)	0.288
GGT, U/L	32.1 (21.0–59.0)	32.0 (20.2–58.06)	32.7 (22.0–60.9)	0.182
ALP, U/L	75.0 (60.0–97.0)	72.0 (58.0–94.0)	79.0 (62.0–102.1)	<0.001
CK, U/L	70.65 (46.00–107.00)	71.00 (47.90–107.23)	70.05 (44.91–106.95)	0.717
LVEF	42.0 (36.8–47.0)	43.0 (37.0–48.0)	40.3 (36.0–46.0)	<0.001
Medication, n (%)				
Antiplatelet agent	493 (32.5%)	290 (34.6%)	203 (29.9%)	0.054
ACEI/ARB	465 (30.7%)	246 (29.3%)	219 (32.3%)	0.215
Beta-blocker	211 (13.9%)	109 (13.0%)	102 (15.0%)	0.254
Statins	342 (22.6%)	186 (22.2%)	156 (23.0%)	0.704
Oral hypoglycemic agents	1026 (67.7%)	566 (67.6%)	460 (67.9%)	0.893
Insulin	509 (33.6%)	277 (33.1%)	232 (34.2%)	0.631

Notes: Data are expressed as n (%) and median (25 and 75 interquartile). *p* values in bold are < 0.05.

Abbreviations: TyG index, triglyceride-glucose index; BMI, body mass index; HT his, history of hypertension; SBP, systolic blood pressure; DBP, diastolic blood pressure; WBC, white blood cell; RBC, red blood cell; PLT, platelet; Cr, creatinine; UA, uric acid; FPG, fasting plasma glucose; TG, triglyceride; LDL-C, low-density lipoprotein-cholesterol; HDL-C, high-density lipoprotein-cholesterol; TC, total cholesterol; TBil, total bilirubin; ALT, alanine transferase; AST, aspartate transferase; LDH, lactate dehydrogenase; GGT, glutamyl transpeptidase; ALP, alkaline phosphatase; CK, creatine kinase; LVEF, left ventricle ejection fraction; ACEI, angiotensin-converting enzyme inhibitor; ARB, angiotensin receptor blocker; MACCEs, Major adverse cardiac and cerebral events.

TyG Index Predicts MACCEs Occurrence

Table 4 summarizes the results of the univariate and multivariate Cox proportional hazards regression analyses, as well as the MACCE predictors. The results of the univariate analysis revealed that the TyG index, age,

Table 2 Baseline Characteristics of the Study Population According to the Tertiles of the TyG Index

Characteristic	Tertile 1 (n=509)	Tertile 2 (n=500)	Tertile 3 (n=505)	P
Male, n (%)	397 (78%)	374 (74.8%)	348 (68.9%)	0.004
Ethnicity, n (%)				
Han	295 (57.9%)	248 (49.6%)	248 (49.1%)	0.019
Uyghur	157 (30.8%)	179 (35.8%)	201 (39.8%)	
Kazah	18 (3.5%)	17 (3.4%)	13 (2.6%)	
Other	39 (7.7%)	56 (11.2%)	43 (8.5%)	
Smoking, n (%)	196 (38.5%)	204 (40.8%)	220 (43.5%)	0.261
Drinking, n (%)	138 (27.1%)	141 (28.2%)	122 (24.2%)	0.323
HT his, n (%)	329 (64.6%)	349 (69.8%)	346 (68.5%)	0.188
TyG-Index	6.83 (6.54–7.07)	7.53 (7.37–7.72)	8.39 (8.13–8.71)	< 0.001
Age, years	68 (61–74)	65 (58–73)	65 (57–73)	< 0.001
BMI, kg/m ²	25.21 (22.86–27.92)	26.15 (23.56–28.74)	25.78 (23.53–28.72)	< 0.001
SBP, mmHg	121 (110–137)	121.5 (110–139)	125 (111–140)	0.079
DBP, mmHg	73 (65–81)	74.5 (67–82)	75 (68–80)	0.280
WBC, 10 ⁹ /L	7.05 (5.66–8.28)	7.22 (5.95–8.8)	7.57 (6.14–9.38)	< 0.001
Neutrophil, 10 ⁹ /L	4.43 (3.47–5.65)	4.71 (3.73–6.01)	4.93 (3.84–6.54)	< 0.001
Lymphocyte, 10 ⁹ /L	1.54 (1.16–1.99)	1.64 (1.22–2.12)	1.67 (1.22–2.13)	0.084
RBC, 10 ⁹ /L	4.36 (3.87–4.78)	4.4 (3.95–4.82)	4.45 (3.96–4.84)	0.177
PLT, 10 ⁹ /L	191 (155–238)	201.5 (161–248)	210 (170–257)	< 0.001
Cr, umol/L	90.0 (72.0–116.8)	89.0 (72.1–117.3)	94.8 (75.0–122.1)	0.114
UA, umol/L	390.4 (315.1–491.0)	384.5 (300.8–471.8)	367.0 (291.5–474.0)	0.013
FPG, mmol/L	5.74 (4.76–6.85)	8.09 (6.64–10.13)	13.03 (10.07–16.83)	< 0.001
TG, mmol/L	0.89 (0.71–1.13)	1.32 (1.06–1.63)	2.02 (1.58–2.94)	< 0.001
HDL-C, mmol/L	0.92 (0.72–1.09)	0.87 (0.71–1.07)	0.85 (0.7–1.05)	0.015
LDL-C, mmol/L	1.91 (1.47–2.47)	2.17 (1.76–2.68)	2.38 (1.83–3.11)	< 0.001
TC, mmol/L	3.06 (2.51–3.71)	3.38 (2.84–3.95)	3.68 (2.91–4.70)	< 0.001
TBil, umol/L	14.9 (10.4–21)	13.3 (9.4–19.3)	12.4 (9.1–18.2)	< 0.001
Albumin, g/L	36.7 (33.1–39.7)	36.6 (32.8–40.8)	36.5 (32.2–40.3)	0.657
ALT, U/L	20.3 (15.7–28.3)	19.7 (14.9–28.9)	19.1 (15.0–28.9)	0.613
AST, U/L	18.1 (12.9–29.8)	20.3 (13.5–29.6)	19.6 (14.1–31.6)	0.064
LDH, U/L	199.7 (172.9–241.0)	202.6 (167.0–242.8)	197.4 (160.0–243.7)	0.444
GGT, U/L	35.6 (21.0–63.0)	31.3 (20.6–55.3)	31.0 (21.8–58.1)	0.185
ALP, U/L	75.0 (59.0, 99.0)	71.0 (58.2–90.9)	80.0 (63.1–101.5)	< 0.001
CK, U/L	68.4 (46.0–102.0)	72.6 (47.0–109.0)	69.8 (45.0–109.1)	0.493
LVEF	43.0 (37.3–48.9)	41.0 (36.8–47.0)	40.3 (35.0–46.0)	< 0.001
Medication, n (%)				
Antiplatelet agent	184 (36.1%)	175 (35.0%)	134 (26.5%)	0.002
ACEI/ARB	152 (29.8%)	154 (30.8%)	159 (31.5%)	0.854
Beta-blocker	92 (18.0%)	60 (12.0%)	59 (11.7%)	0.004
Statins	104 (20.4%)	120 (24.0%)	118 (23.3%)	0.351
Oral hypoglycemic agents	368 (72.2%)	323 (64.6%)	335 (66.3%)	0.023
Insulin	189 (37.1%)	149 (29.8%)	171 (33.9%)	0.048

Notes: Data are expressed as n (%) and median (25 and 75 interquartile). p values in bold are < 0.05.

Abbreviations: TyG index, triglyceride-glucose index; BMI, body mass index; HT his, history of hypertension; SBP, systolic blood pressure; DBP, diastolic blood pressure; WBC, white blood cell; RBC, red blood cell; PLT, platelet; Cr, creatinine; UA, uric acid; FPG fasting plasma glucose; TG, triglyceride; LDL-C, low-density lipoprotein-cholesterol; HDL-C, high-density lipoprotein-cholesterol; TC, total cholesterol; TBil, total bilirubin; ALT, alanine transferase; AST, aspartate transferase; LDH, lactate dehydrogenase; GGT, glutamyl transpeptidase; ALP, alkaline phosphatase; CK, creatine kinase; LVEF, left ventricle ejection fraction; ACEI, angiotensin-converting enzyme inhibitor; ARB, angiotensin receptor blocker; MACCEs, Major adverse cardiac and cerebral events.

neutrophils, PLT, UA, and ALP were all correlated with the occurrence of MACCEs. Notably, after controlling for confounders, including age and gender, Multivariate Cox regression analysis revealed that PLT, UA, age, TyG index, and ALP were independent predictors of the development of MACCEs in patients with ICM and T2DM.

Table 3 Correlations Between the TyG Index and Cardiovascular Risk Factors

Characteristic	Correlation Coefficient	p values
Age	-0.099	<0.001
BMI	0.076	0.003
SBP	0.051	0.045
DBP	0.044	0.087
WBC	0.130	<0.001
Neutrophil	0.123	<0.001
Lymphocyte	0.059	0.021
RBC	0.059	0.022
PLT	0.119	<0.001
Cr	0.045	0.079
UA	-0.055	0.034
HDL-C	-0.076	0.003
LDL-C	0.242	<0.001
TC	0.338	<0.001
TBil	-0.111	<0.001
Albumin	0.024	0.343
ALT	-0.020	0.436
AST	0.063	0.014
LDH	-0.037	0.151
GGT	-0.001	0.961
ALP	0.055	0.033
CK	0.011	0.671
LVEF	-0.100	<0.001

Note: p values in bold are < 0.05.

Abbreviations: TyG index, triglyceride-glucose index; BMI, body mass index; SBP, systolic blood pressure; DBP, diastolic blood pressure; WBC, white blood cell; RBC, red blood cell; PLT, platelet; Cr, creatinine; UA, uric acid; LDL-C, low-density lipoprotein-cholesterol; HDL-C, high-density lipoprotein-cholesterol; TC, total cholesterol; TBil, total bilirubin; ALT, alanine transferase; AST, aspartate transferase; LDH, lactate dehydrogenase; GGT, glutamyl transpeptidase; ALP, alkaline phosphatase; CK, creatine kinase; LVEF, left ventricle ejection fraction.

Over the course of a mean follow-up of 55.4 months, 677 (44.7%) patients had developed MACCEs [acute myocardial infarction: 34 (2.2%), heart failure: 86 (5.7%), cardiogenic shock: 25 (1.6%), chest pain: 91 (6%), malignant arrhythmia: 62 (4.1%), cerebral infarction: 64 (4.2%), gastrointestinal bleeding: 33 (2.1%), and all-cause death: 529 (34.9%)].

The Kaplan-Meier survival curve was used to visualize patient outcomes based on the TyG index levels (Figure 2). As depicted in Figure 2, the survival of subjects with ICM and T2DM decreased as the tertile of TyG index levels increased (Log rank test, $p < 0.05$).

Table 5 displays the Cox proportional hazards regression analysis results of MACCEs. In the uncorrected Cox proportional hazards regression models, the cumulative incidence of chest pain, heart failure, malignant arrhythmia, acute myocardial infarction, cerebral infarction, gastrointestinal bleeding, all-cause death, and MACCEs significantly increased with increasing TyG index levels ($p < 0.05$). Furthermore, after controlling for potential confounders, the cumulative incidence and multivariate-adjusted hazard ratio (HR) of chest pain, acute myocardial infarction, heart failure, cardiogenic shock, malignant arrhythmias, cerebral infarction, gastrointestinal bleeding, all-cause death, and MACCEs increased significantly with increasing TyG index levels in the multivariate Cox proportional hazards regression models ($p < 0.05$).

Table 4 Independent Predictors of Composite MACCEs

	Univariate Cox Regression			Multivariate Cox Regression		
	HR	95% CI	p	HR	95% CI	p
TyG-Index	2.043	(1.871–2.230)	<0.001	2.204	(1.997–2.443)	<0.001
Male, gender	0.946	(0.800–1.119)	0.518			
Age	1.015	(1.008–1.023)	<0.001	1.023	(1.014–1.031)	<0.001
BMI, kg/m ²	0.990	(0.973–1.007)	0.254			
Neutrophil, 10 ⁹ /L	1.059	(1.033–1.087)	<0.001	1.008	(0.979–1.038)	0.602
Lymphocyte, 10 ⁹ /L	0.943	(0.852–1.042)	0.250			
PLT, 10 ⁹ /L	1.002	(1.001–1.003)	<0.001	1.002	(1.001–1.003)	<0.001
UA, umol/L	1.001	(1.000–1.001)	0.002	1.001	(1.000–1.001)	0.003
HDL-C, mmol/L	0.842	(0.682–1.039)	0.109			
LDL-C, mmol/L	1.069	(0.991–1.154)	0.084			
TC, mmol/L	1.053	(0.996–1.114)	0.068			
TBil, umol/L	0.997	(0.990–1.004)	0.404			
ALP, U/L	1.002	(1.000–1.003)	0.013	1.002	(1.001–1.003)	0.048
LVEF, %	0.996	(0.989–1.004)	0.326			
Antiplatelet agent	0.872	(0.740–1.028)	0.102			
ACEI/ARB	1.042	(0.887–1.224)	0.617			
Beta-blocker	1.185	(0.960–1.463)	0.114			
Statins	1.022	(0.854–1.222)	0.813			
Oral hypoglycemic agents	1.000	(0.851–1.175)	0.998			
Insulin	1.022	(0.872–1.198)	0.788			

Notes: Adjusted factors included TyG-Index, Age, neutrophil, PLT, UA, ALP, HDL-C, LDL-C, TC. *p* values in bold are < 0.05.

Abbreviations: TyG index, triglyceride-glucose index; BMI, body mass index; PLT, platelet; UA, uric acid; LDL-C, low-density lipoprotein-cholesterol; HDL-C, high-density lipoprotein-cholesterol; TC, total cholesterol; TBil total bilirubin; ALP, alkaline phosphatase; LVEF, left ventricle ejection fraction; ACEI, angiotensin-converting enzyme inhibitor; ARB, angiotensin receptor blocker; MACCEs, Major adverse cardiac and cerebral events.

Assessment of the Predictive Effectiveness of the TyG Index for MACCEs

A time-dependent ROC analysis was performed to assess the predictive significance and prediction efficacy of the TyG index. The area under the curve (AUC) increased to 0.653 in the 3rd year, 0.688 in the 5th year, and 0.764 in the 10th year (Figure 3). As depicted in Table 6, incorporating the TyG index into the original risk model demonstrated a marked improvement in reclassification and discrimination compared with the FPG and TG, with an NRI of 0.361 and an IDI of 0.138 ($P < 0.05$). Furthermore, the C-index increased from [0.588 (0.565 to 0.610), $P < 0.001$] to [0.678 (0.658 to 0.698), $P < 0.001$] following the inclusion of the TyG index.

Association of the TyG Index with MACCEs in Different Subgroups

The ability of the TyG index to predict endpoint events was evaluated in various subgroups of the study population, classified based on age, BMI, sex, LVEF, smoking status, and a history of hypertension. The findings revealed that an increase in TyG index levels was related to MACCE in various subgroups, indicating that the TyG index was a reliable predictor in the majority of subgroups (Figure 4).

Discussion

To the best of our knowledge, this is the first study to examine the correlation of MACCEs with the TyG index in individuals with ICM and T2DM. The following are the main findings of this study: (1) A rise in TyG index levels increases the incidence of MACCEs; (2) TyG index may be employed to independently predict the occurrence of MACCEs (chest pain, acute myocardial infarction, heart failure, cardiogenic shock, malignant arrhythmia, cerebral infarction, gastrointestinal bleeding, and all-cause death) in subjects with ICM combined with T2DM; (3) TyG index can predict the occurrence of MACCEs, with an AUC of 0.653 in the 3rd year, 0.688 in the 5th year, and 0.764 in the 10th year, with best cutoff values of 8.01, 7.98, and

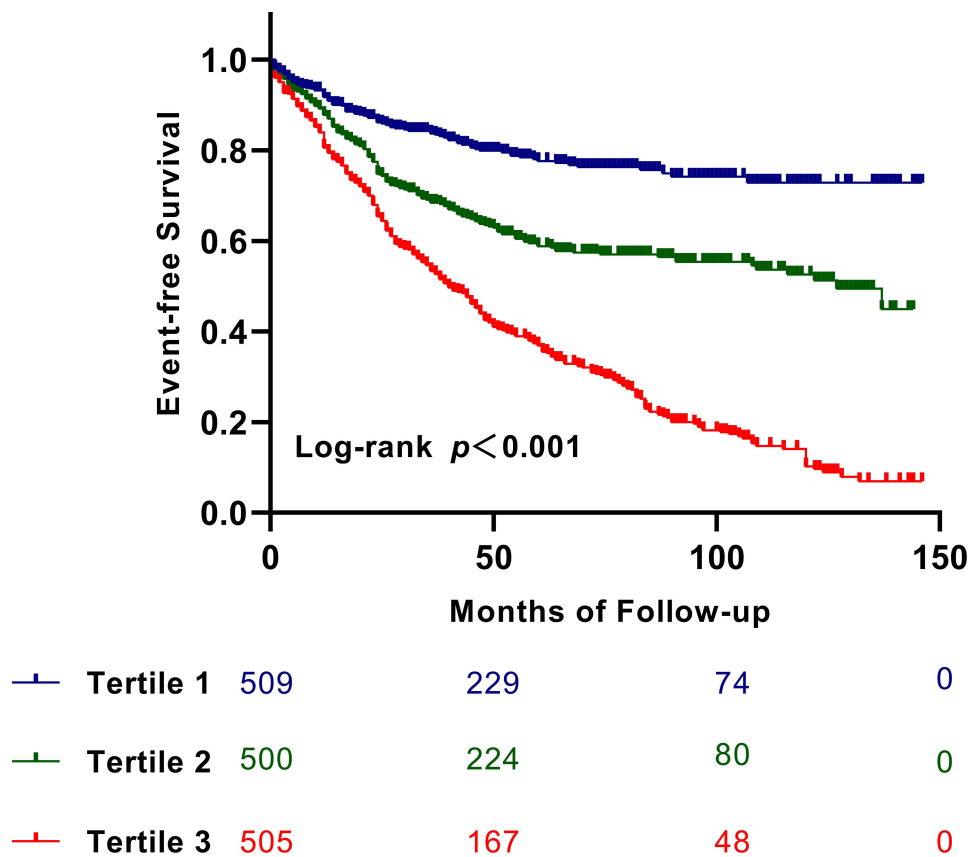


Figure 2 Kaplan–Meier survival curve for MACCEs across the TyG index tertiles.

7.94, respectively; (4) Incorporating TyG index into the risk model can improve MACCE prediction accuracy of the model; In the present investigation, a simple IR valuation method was employed for potential optimization of the combined recurrent cardiovascular risk prediction method for ICM patients with T2DM.

Table 5 Cox Proportional Hazards Regression Models of MACCEs

Characteristic	n (%)	Univariate Cox Regression		Multivariate Cox Regression	
		HR (95% CI)	p	Adjusted HR (95% CI)	p
MACCEs					
TyG≤7.21	100 (19.6)	Ref	-/-	Ref	-/-
7.21 < TyG <7.89	199 (39.8)	1.996 (1.570–2.538)	<0.001	2.152 (1.684–2.751)	<0.001
TyG≥7.89	378 (74.9)	4.383 (3.515–5.465)	<0.001	4.856 (3.842–6.136)	<0.001
Chest-pain					
TyG≤7.21	9 (1.8)	Ref	-/-	Ref	-/-
7.21 < TyG <7.89	11 (2.2)	1.218 (0.505–2.939)	0.661	1.167 (0.477–2.854)	0.735
TyG≥7.89	71 (14.1)	9.336 (4.661–18.699)	<0.001	9.056 (4.370–18.767)	<0.001
Acute-myocardial infarction					
TyG≤7.21	4 (0.8)	Ref	-/-	Ref	-/-
7.21 < TyG <7.89	15 (3)	3.737 (1.240–11.262)	0.019	4.236 (1.368–13.179)	0.012
TyG≥7.89	15 (3)	4.313 (1.430–13.008)	<0.009	4.437 (1.420–13.869)	0.010
Heart failure					
TyG≤7.21	8 (1.6)	Ref	-/-	Ref	-/-
7.21 < TyG <7.89	22 (4.4)	2.758 (1.228–6.195)	0.014	2.657 (1.162–6.072)	0.021

(Continued)

Table 5 (Continued).

Characteristic	n (%)	Univariate Cox Regression		Multivariate Cox Regression	
		HR (95% CI)	p	Adjusted HR (95% CI)	p
TyG \geq 7.89	56 (11.1)	8.025 (3.824–16.843)	<0.001	7.334 (3.424–15.708)	<0.001
Cardiogenic-shock					
TyG \leq 7.21	5 (0.9)	Ref	-/-	Ref	-/-
7.21 < TyG <7.89	8 (1.6)	1.563 (0.511–4.780)	0.433	1.957 (0.617–6.325)	0.252
TyG \geq 7.89	12 (2.3)	2.779 (0.977–7.905)	0.055	3.707 (1.207–11.384)	0.022
Malignant-arrhythmia					
TyG \leq 7.21	8 (1.5)	Ref	-/-	Ref	-/-
7.21 < TyG <7.89	19 (3.8)	2.353 (1.030–5.376)	0.042	2.554 (1.100–5.931)	0.029
TyG \geq 7.89	35 (6.9)	5.128 (2.376–11.065)	<0.001	5.309 (2.367–11.908)	<0.001
Cerebral-infarction					
TyG \leq 7.21	14 (2.7)	Ref	-/-	Ref	-/-
7.21 < TyG <7.89	17 (3.4)	1.223 (0.603–2.481)	0.577	1.269 (0.614–2.624)	0.520
TyG \geq 7.89	33 (6.5)	2.857 (1.526–5.348)	<0.001	3.127 (1.596–6.128)	<0.001
Gastrointestinal bleeding					
TyG \leq 7.21	6 (1.1)	Ref	-/-	Ref	-/-
7.21 < TyG <7.89	10 (2)	1.688 (0.614–4.646)	0.310	2.117 (0.748–5.996)	0.158
TyG \geq 7.89	17 (3.3)	3.351 (1.318–8.517)	0.011	4.326 (1.612–11.613)	0.004
All-cause death					
TyG \leq 7.21	85 (16.7)	Ref	-/-	Ref	-/-
7.21 < TyG <7.89	157 (31.4)	1.854 (1.424–2.414)	<0.001	2.022 (1.543–2.649)	<0.001
TyG \geq 7.89	287 (56.8)	3.945 (3.096–5.027)	<0.001	4.502 (3.478–5.827)	<0.001

Notes: Adjusted factors included Age, BMI, neutrophil, lymphocyte, PLT, UA, HDL-C, LDL-C, ALP, LVEF, gender, TC, HT his, Ethnicity, Medication (Antiplatelet agent, ACEI/ARB, Beta-blocker, Statins, Oral hypoglycemic agents, Insulin). p values in bold are < 0.05.

Abbreviations: TyG index, triglyceride-glucose index; BMI, body mass index; PLT, platelet; UA, uric acid; LDL-C, low-density lipoprotein-cholesterol; HDL-C, high-density lipoprotein-cholesterol; ALP, alkaline phosphatase; LVEF, left ventricle ejection fraction; TC, total cholesterol; HT his, history of hypertension; ACEI, angiotensin-converting enzyme inhibitor; ARB, angiotensin receptor blocker; MACCEs Major adverse cardiac and cerebral events; HR, hazard ratio; CI, confidence interval; Ref, reference.

IR is a symptom of glucose metabolism dysfunction and refers to decreased ability of insulin to promote glucose uptake and utilization. IR may hasten the development of CVDs by inducing vascular endothelial dysfunction, changes in systemic lipid metabolism, and abnormalities in glucose metabolism.²⁶

It has been established that IR is a risk factor for CVDs and MACCEs. The hyperinsulin-normal glucose clamp method and the HOMA-IR method are the two main traditional IR identification approaches. Nevertheless, due to the difficulty and high cost of the test procedure, neither of these two approaches can be used widely in clinical practice. Several studies on the TyG index have resolved this clinical issue, and the results show that the TyG index is a reliable alternative to IR.²⁷ Furthermore, TyG has been proposed as a better predictor of IR and atherosclerosis than HOMA-IR.^{28,29}

A growing number of studies have confirmed the close association between the TyG index and CVD prognosis. Laura Sánchez-Íñigo et al confirmed that the TyG index is an indicator of IR and can be utilized to identify individuals at increased risk of developing cardiovascular events.¹⁹ Zhenguo Wu et al concluded that the TyG index is significantly associated with premature CAD adverse prognostic events, confirming the early intervention effect of the TyG index.³⁰ Yue Zhang et al demonstrated for the first time that a high TyG index level is a reliable predictor of poor prognosis in subjects with acute myocardial infarction and T2DM. The present study demonstrated that individuals with T2DM and acute myocardial infarction can be classified and their risk predicted using the TyG index.²² Wang et al conducted a 3-year investigation of 2531 patients with acute coronary syndrome and T2DM and found an increased incidence of MACCEs at a higher TyG index, with the best cutoff value for predicting major adverse prognostic events of 9.323.¹⁸

In addition, an investigation of 798 individuals with T2DM and non-ST-segment elevation acute coronary syndrome who underwent PCI revealed a significant link between a higher TyG index and poor prognosis post-procedure. Incorporating the TyG index into the fundamental risk model potentially increased the accuracy of the model in

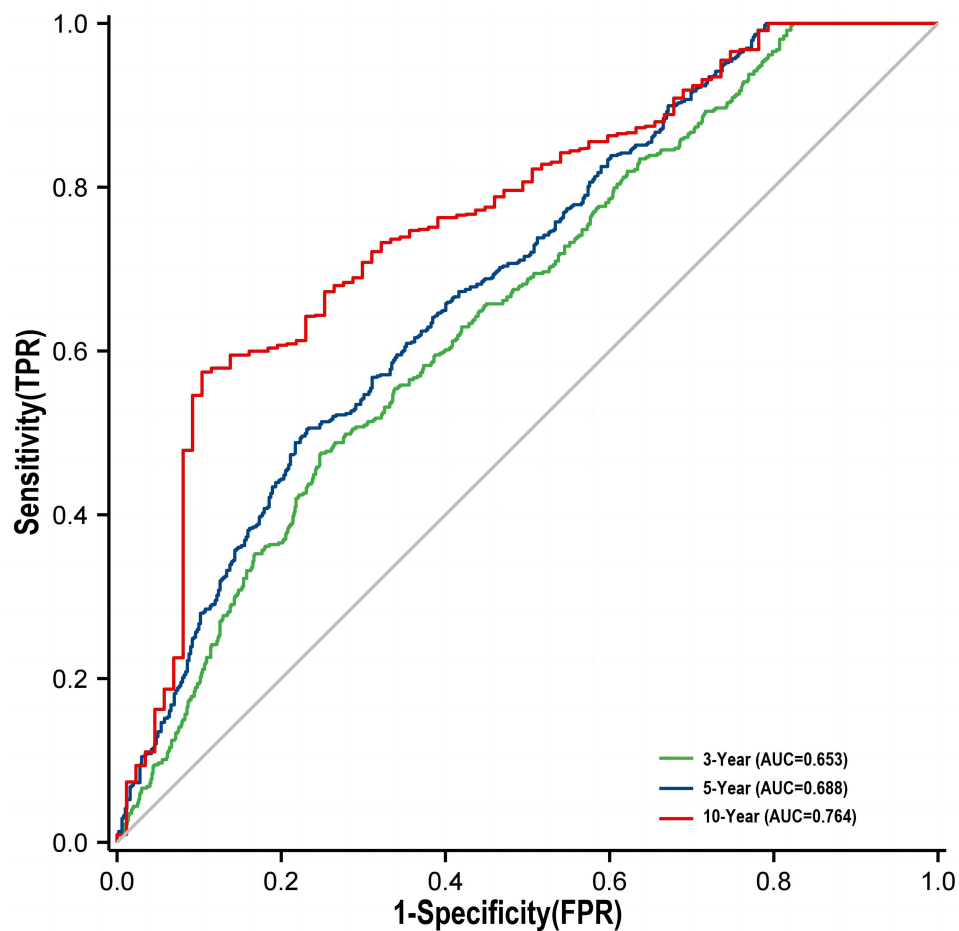


Figure 3 Time-dependent ROC curves of the TyG index for the prediction of MACCEs.

predicting poor prognosis.²¹ Moreover, Thiago Hueb et al stated that subjects with ischemic cardiomyopathy and diabetes had a significantly lower survival rate than those without diabetes. This finding confirmed that diabetes negatively impacts patients with ischemic cardiomyopathy.¹¹ However, the predictive significance of the TyG index in patients with T2DM and ICM remains unknown.

This is the first study to look into the prognostic value of the TyG index on the prognosis of subjects with ICM and T2DM, and the findings are expected to improve clinical treatment plans. The relationship between various types of MACCEs (including chest pain, acute myocardial infarction, heart failure, cardiogenic shock, malignant arrhythmias, cerebral infarction, gastrointestinal bleeding, and all-cause death) and the TyG index was examined in this study. The

Table 6 Evaluate the Incremental Predictive Value and Predictive Power of Various Models with NRI, IDI and C-Index

Characteristic	C-Index	<i>p</i>	Continuous NRI	<i>p</i>	IDI	<i>p</i>
Original model	0.588 (0.565–0.610)	<0.001		Ref		Ref
+TG	0.622 (0.600–0.644)	<0.001	0.173 (0.057–0.282)	0.004	0.027 (0.010–0.043)	0.004
+FPG	0.662 (0.641–0.683)	<0.001	0.278 (0.171–0.384)	0.004	0.089 (0.061–0.116)	<0.001
+TyG-Index	0.678 (0.658–0.698)	<0.001	0.361 (0.253–0.454)	0.002	0.138 (0.098–0.175)	0.002

Notes: Baseline risk model including age, PLT, UA, ALP. *p* values in bold are < 0.05.

Abbreviations: NRI, net reclassification improvement; IDI, integrated discrimination improvement; FPG, fasting plasma glucose; TG, triglyceride; TyG, triglyceride-glucose index; UA, uric acid; ALP, alkaline phosphatase; PLT, platelet; Ref, reference.

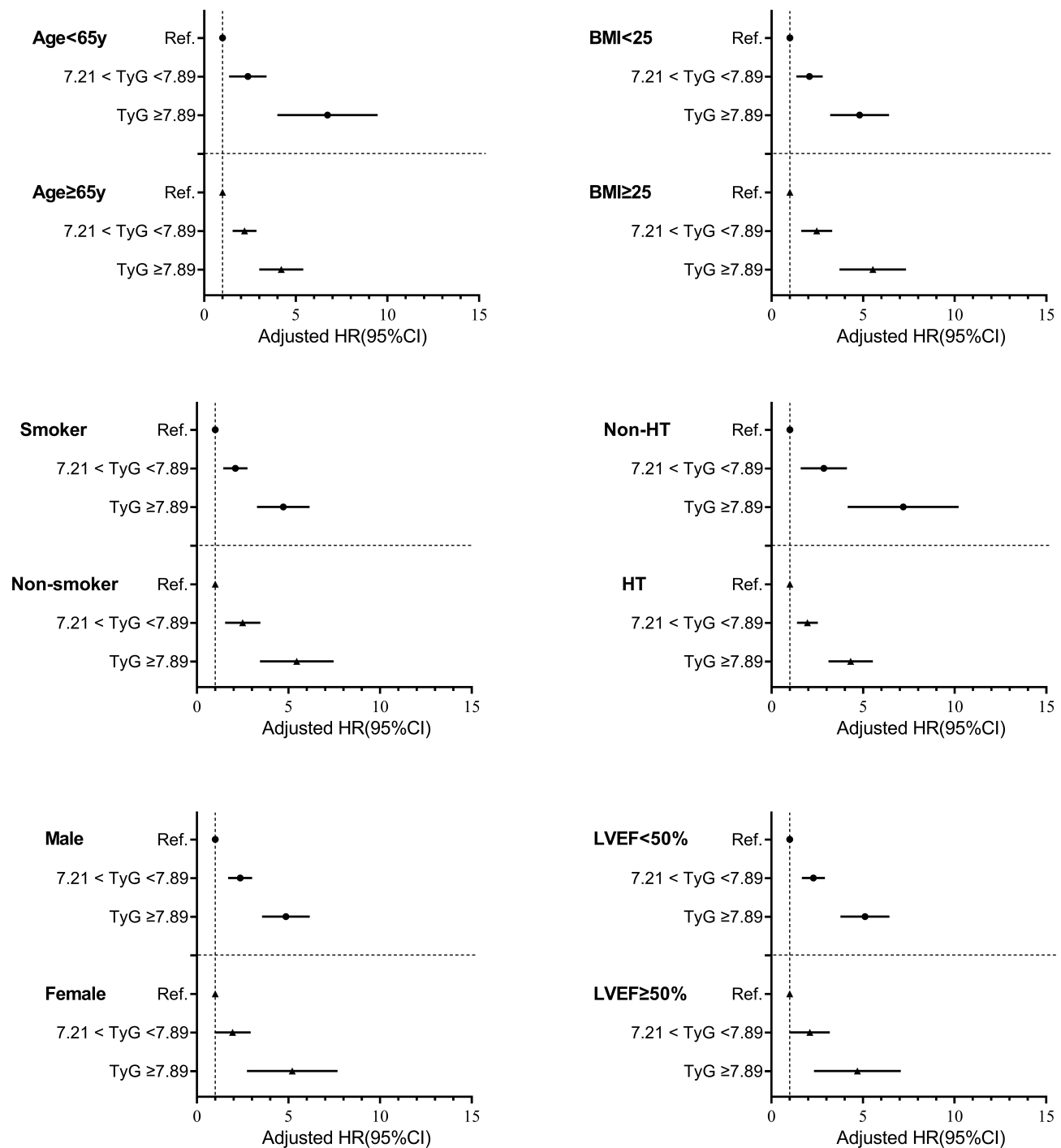


Figure 4 Forest plot of composite MACCEs according to different subgroups.

Notes: Adjusted model included Age, gender, smoking, HT his, BMI, Neutrophil, lymphocyte, HDL-C, LDL-C, TC, UA, PLT, ALP, LVEF, Medication (Anti platelet agent, ACEI/ARB, Beta blocker, Statins, Oral hypoglycemic agents, Insulin).

Abbreviations: MACCEs, Major adverse cardiac and cerebral events; TyG, triglyceride-glucose index; BMI, body mass index; HT his, history of hypertension; LDL-C, low-density lipoprotein-cholesterol; HDL-C, high-density lipoprotein-cholesterol; TC, total cholesterol; UA, uric acid; PLT, platelet; ALP, alkaline phosphatase; ACEI, angiotensin-converting enzyme inhibitor; ARB, angiotensin receptor blocker; HR, hazard ratio; CI, confidence interval; Ref., reference (TyG ≤ 7.21 group).

TyG index was also shown to positively impact a more comprehensive risk assessment and classification of this population based on conventional risk factors, confirming that it is an effective medical predictor for individuals with ICM combined with T2DM. Additionally, according to the findings of Zhao et al, incorporating the TyG index into the original risk model significantly improved the ability of the model to predict MACCEs.²¹

The Spearman correlation analysis revealed that the TyG index is positively associated with several CVD traditional risk factors, including LDL-C, BMI, and SBP. An earlier study found that high blood pressure, particularly high SBP, can trigger reduced myocardial compliance, high left ventricular filling pressures, left atrial enlargement, and pulmonary venous congestion, all of which can predispose these individuals to heart failure.³¹ High BMI and LDL-C are known as risk factors for CVD worldwide.^{32,33} As a result, early detection of high-risk individuals and timely implementation of treatment plans based on the TyG index improve the prognosis of these patients. In addition, it aids in the screening of high-risk patients for early intervention.

While findings from the present study demonstrate that the TyG index is effective in predicting adverse prognostic events in patients with ICM and T2DM, some limitations should be considered. (1) A strictly screened cohort with a relatively small sample size was used for this retrospective and observational study; therefore, the findings of this study must be confirmed in prospective and multicenter with a larger sample size and a larger population. (2) Changes in the TyG index during the follow-up period were not taken into account in this study. (3) Some patients may have undiagnosed systemic illnesses, such as occult malignancies, which may influence prognosis. (4) This study focused on the predictive ability of the TyG index; therefore it cannot be compared to HOMA-IR because HOMA-IR estimation was not performed. (5) The present study did not look into the primary role of visceral adiposity due to the lack of waist circumference data and could not adjust TyG data for this variable.

Conclusions

A high TyG index level is associated with the development of MACCEs in patients with ICM and T2DM. As such, the TyG index could be a valuable biomarker in the early detection and prevention of MACCE in these patients. Furthermore, early intervention in IR may improve the prognosis of patients with ICM and T2DM.

Data Sharing Statement

The datasets generated during and/or analyzed during the current study are available from the corresponding author upon reasonable request.

Ethics Statement

Studies involving human participants were reviewed and approved by the Ethics Committee of the First Affiliated Hospital of Xinjiang Medical University (approval number: S220722-25) and followed the Declaration of Helsinki. Patients/participants provided written informed consent for their participation in this study as well as for the publication of any potentially identifiable images or data included herein.

Acknowledgments

The authors would like to express their gratitude to all the healthcare workers and patients who participated in the study.

Author Contributions

All authors contributed significantly to the work reported, whether s in the conception, study design, execution, acquisition of data, analysis, and interpretation, or all these areas; participated in drafting, revising, or critically reviewing the article; gave final approval of the publishable version; agreed on the journal for the submission of the manuscript; and agreed to be accountable for all aspects of the work.

Funding

This work was supported by the National Natural Science Foundation of China (U1903212) and the key project of Xinjiang Natural Science Foundation.

Disclosure

The authors have no relevant financial or non-financial interests to disclose.

References

- Ardeshtna DR, Bob-Manuel T, Nanda A, et al. Asian-Indians: a review of coronary artery disease in this understudied cohort in the United States. *Ann Transl Med.* 2018;6(1):12. doi:10.21037/atm.2017.10.18
- Zhang Y, Zhang J, Butler J, et al. Contemporary epidemiology, management, and outcomes of patients hospitalized for heart failure in China: results from the China Heart Failure (China-HF) Registry. *J Card Fail.* 2017;23(12):868–875. doi:10.1016/j.cardfail.2017.09.014
- Shipulin VM, Pryakhin AS, Andreev SL, Shipulin VV, Kozlov BN. Results of reconstructive interventions in patients with ischemic cardiomyopathy. *Asian Cardiovasc Thorac Ann.* 2021;29(6):508–517. doi:10.1177/0218492320983464
- Gheorghide M, Sopko G, De Luca L, et al. Navigating the crossroads of coronary artery disease and heart failure. *Circulation.* 2006;114(11):1202–1213. doi:10.1161/CIRCULATIONAHA.106.623199
- Felker GM, Shaw LK, O'Connor CM. A standardized definition of ischemic cardiomyopathy for use in clinical research. *J Am Coll Cardiol.* 2002;39(2):210–218. doi:10.1016/S0735-1097(01)01738-7
- Zhang S, Jin R, Li B. Serum NT-proBNP and TUG1 as novel biomarkers for elderly hypertensive patients with heart failure with preserved ejection fraction. *Exp Ther Med.* 2021;21(5):446. doi:10.3892/etm.2021.9874
- Metra M, Carubelli V, Raverà A, Stewart Coats AJ. Heart failure 2016: still more questions than answers. *Int J Cardiol.* 2017;227:766–777. doi:10.1016/j.ijcard.2016.10.060
- Filippatos G, Khan SS, Ambrosy AP, et al. International Registry to assess medical practice with longitudinal Observation for Treatment of Heart Failure (REPORT-HF): rationale for and design of a global registry. *Eur J Heart Fail.* 2015;17(5):527–533. doi:10.1002/ejhf.262
- De Rosa S, Arcidiacono B, Chiefari E, Brunetti A, Indolfi C, Foti DP. Type 2 diabetes mellitus and cardiovascular disease: genetic and epigenetic links. *Front Endocrinol.* 2018;9:2. doi:10.3389/fendo.2018.00002
- Ray KK, Colhoun HM, Szarek M, et al. Effects of alirocumab on cardiovascular and metabolic outcomes after acute coronary syndrome in patients with or without diabetes: a prespecified analysis of the ODYSSEY OUTCOMES randomised controlled trial. *Lancet Diabetes Endocrinol.* 2019;7(8):618–628. doi:10.1016/S2213-8587(19)30158-5
- Hueb T, Rocha MS, Siqueira SF, et al. Impact of diabetes mellitus on ischemic cardiomyopathy. Five-year follow-up. REVISION-DM trial. *Diabetol Metab Syndr.* 2018;10:19. doi:10.1186/s13098-018-0320-y
- van Ark J, Hammes HP, van Dijk MC, et al. Circulating alpha-klotho levels are not disturbed in patients with type 2 diabetes with and without macrovascular disease in the absence of nephropathy. *Cardiovasc Diabetol.* 2013;12:116. doi:10.1186/1475-2840-12-116
- Ma CX, Ma XN, Guan CH, Li YD, Mauricio D, Fu SB. Cardiovascular disease in type 2 diabetes mellitus: progress toward personalized management. *Cardiovasc Diabetol.* 2022;21(1):74. doi:10.1186/s12933-022-01516-6
- Adeva-Andany MM, Martínez-Rodríguez J, González-Lucán M, Fernández-Fernández C, Castro-Quintela E. Insulin resistance is a cardiovascular risk factor in humans. *Diabetes Metab Syndr.* 2019;13(2):1449–1455. doi:10.1016/j.dsx.2019.02.023
- Tenenbaum A, Adler Y, Boyko V, et al. Insulin resistance is associated with increased risk of major cardiovascular events in patients with preexisting coronary artery disease. *Am Heart J.* 2007;153(4):559–565. doi:10.1016/j.ahj.2007.01.008
- Gast KB, Tjeerdema N, Stijnen T, Smit JW, Dekkers OM, Hernandez AV. Insulin resistance and risk of incident cardiovascular events in adults without diabetes: meta-analysis. *PLoS One.* 2012;7(12):e52036. doi:10.1371/journal.pone.0052036
- American Diabetes Association. Consensus development conference on insulin resistance. 5–6 November 1997. *Diabetes Care.* 1998;21(2):310–314. doi:10.2337/diacare.21.2.310
- Wang L, Cong HL, Zhang JX, et al. Triglyceride-glucose index predicts adverse cardiovascular events in patients with diabetes and acute coronary syndrome. *Cardiovasc Diabetol.* 2020;19(1):80. doi:10.1186/s12933-020-01054-z
- Sánchez-Íñigo L, Navarro-González D, Fernández-Montero A, Pastrana-Delgado J, Martínez JA. The TyG index may predict the development of cardiovascular events. *Eur J Clin Invest.* 2016;46(2):189–197. doi:10.1111/eci.12583
- Hong S, Han K, Park CY. The triglyceride glucose index is a simple and low-cost marker associated with atherosclerotic cardiovascular disease: a population-based study. *BMC Med.* 2020;18(1):361. doi:10.1186/s12916-020-01824-2
- Zhao Q, Zhang TY, Cheng YJ, et al. Impacts of triglyceride-glucose index on prognosis of patients with type 2 diabetes mellitus and non-ST-segment elevation acute coronary syndrome: results from an observational cohort study in China. *Cardiovasc Diabetol.* 2020;19(1):108. doi:10.1186/s12933-020-01086-5
- Zhang Y, Ding X, Hua B, et al. Predictive effect of triglyceride-glucose index on clinical events in patients with type 2 diabetes mellitus and acute myocardial infarction: results from an observational cohort study in China. *Cardiovasc Diabetol.* 2021;20(1):43. doi:10.1186/s12933-021-01236-3
- Tarantino G, Crocetto F, Di Vito C, et al. Association of NAFLD and insulin resistance with non metastatic bladder cancer patients: a cross-sectional retrospective study. *J Clin Med.* 2021;10(2):346. doi:10.3390/jcm10020346
- Ng AC, Sindone AP, Wong HS, Freedman SB. Differences in management and outcome of ischemic and non-ischemic cardiomyopathy. *Int J Cardiol.* 2008;129(2):198–204. doi:10.1016/j.ijcard.2007.07.014
- Alberti KG, Zimmet PZ. Definition, diagnosis and classification of diabetes mellitus and its complications. Part 1: diagnosis and classification of diabetes mellitus provisional report of a WHO consultation. *Diabet Med.* 1998;15(7):539–553. doi:10.1002/(SICI)1096-9136(199807)15:7<539::AID-DIA668>3.0.CO;2-S
- Ormazabal V, Nair S, Elfeky O, Aguayo C, Salomon C, Zuñiga FA. Association between insulin resistance and the development of cardiovascular disease. *Cardiovasc Diabetol.* 2018;17(1):122. doi:10.1186/s12933-018-0762-4
- Guerrero-Romero F, Simental-Mendía LE, González-Ortiz M, et al. The product of triglycerides and glucose, a simple measure of insulin sensitivity. Comparison with the euglycemic-hyperinsulinemic clamp. *J Clin Endocrinol Metab.* 2010;95(7):3347–3351. doi:10.1210/jc.2010-0288
- Vasques AC, Novaes FS, de Oliveira Mda S, et al. TyG index performs better than HOMA in a Brazilian population: a hyperglycemic clamp validated study. *Diabetes Res Clin Pract.* 2011;93(3):e98–e100. doi:10.1016/j.diabres.2011.05.030
- Irace C, Carallo C, Scavelli FB, et al. Markers of insulin resistance and carotid atherosclerosis. A comparison of the homeostasis model assessment and triglyceride glucose index. *Int J Clin Pract.* 2013;67(7):665–672. doi:10.1111/ijcp.12124
- Wu Z, Liu L, Wang W, et al. Triglyceride-glucose index in the prediction of adverse cardiovascular events in patients with premature coronary artery disease: a retrospective cohort study. *Cardiovasc Diabetol.* 2022;21(1):142. doi:10.1186/s12933-022-01576-8
- Sorrentino MJ. The evolution from hypertension to heart failure. *Heart Fail Clin.* 2019;15(4):447–453. doi:10.1016/j.hfc.2019.06.005

32. Li J, Yu S, Zhou W, et al. U-shaped association of body mass index with the risk of peripheral arterial disease in Chinese hypertensive population. *Int J Gen Med.* 2021;14:3627–3634. doi:10.2147/IJGM.S323769
33. Zhu L, Wu G, Yang X, et al. Low density lipoprotein mimics insulin action on autophagy and glucose uptake in endothelial cells. *Sci Rep.* 2019;9(1):3020. doi:10.1038/s41598-019-39559-7

Diabetes, Metabolic Syndrome and Obesity

Dovepress

Publish your work in this journal

Diabetes, Metabolic Syndrome and Obesity is an international, peer-reviewed open-access journal committed to the rapid publication of the latest laboratory and clinical findings in the fields of diabetes, metabolic syndrome and obesity research. Original research, review, case reports, hypothesis formation, expert opinion and commentaries are all considered for publication. The manuscript management system is completely online and includes a very quick and fair peer-review system, which is all easy to use. Visit <http://www.dovepress.com/testimonials.php> to read real quotes from published authors.

Submit your manuscript here: <https://www.dovepress.com/diabetes-metabolic-syndrome-and-obesity-journal>