

RESEARCH

Open Access



ApoE4 ($\Delta 272-299$) induces mitochondrial-associated membrane formation and mitochondrial impairment by enhancing GRP75-modulated mitochondrial calcium overload in neuron

Tao Liang^{1,2†}, Weijian Hang^{1,3†}, Jiehui Chen¹, Yue Wu¹, Bin Wen¹, Kai Xu¹, Bingbing Ding¹ and Juan Chen^{1*}

Abstract

Background: Apolipoprotein E4 (apoE4) is a major genetic risk factor of Alzheimer's disease. Its C-terminal-truncated apoE4 ($\Delta 272-299$) has neurotoxicity by affecting mitochondrial respiratory function. However, the molecular mechanism(s) underlying the action of apoE4 ($\Delta 272-299$) in mitochondrial function remain poorly understood.

Methods: The impact of neuronal apoE4 ($\Delta 272-299$) expression on ER stress, mitochondrial-associated membrane (MAM) formation, GRP75, calcium transport and mitochondrial impairment was determined *in vivo* and *in vitro*. Furthermore, the importance of ER stress or GRP75 activity in the apoE4 ($\Delta 272-299$)-promoted mitochondrial dysfunction in neuron was investigated.

Results: Neuronal apoE4 ($\Delta 272-299$) expression induced mitochondrial impairment by inducing ER stress and mitochondrial-associated membrane (MAM) formation *in vivo* and *in vitro*. Furthermore, apoE4 ($\Delta 272-299$) expression promoted GRP75 expression, mitochondrial dysfunction and calcium transport into the mitochondria in neuron, which were significantly mitigated by treatment with PBA (an inhibitor of ER stress), MKT077 (a specific GRP75 inhibitor) or GRP75 silencing.

Conclusions: ApoE4 ($\Delta 272-299$) significantly impaired neuron mitochondrial function by triggering ER stress, up-regulating GRP75 expression to increase MAM formation, and mitochondrial calcium overload. Our findings may provide new insights into the neurotoxicity of apoE4 ($\Delta 272-299$) against mitochondrial function and uncover new therapeutic targets for the intervention of Alzheimer's disease.

Keywords: Alzheimer's disease, Apolipoprotein E4, apoE4 ($\Delta 272-299$), ER stress, Mitochondria-associated ER membrane, Mitochondrial Ca^{2+} overload

Introduction

Alzheimer's disease (AD) is a common neurodegenerative disease and is caused by several pathogenic factors, including the genetic susceptibility [1, 2]. It is well known that one of the most important genetic risk factors for AD is apolipoprotein E4 (apoE4). Approximately, 40–65% of patients with familial and sporadic AD carry the apoE4

*Correspondence: chenjuanlinda69@163.com

†Tao Liang and Weijian Hang contributed equally to this work

¹ Department of Biochemistry and Molecular Biology, School of Basic Medicine and the Collaborative Innovation Center for Brain Science, Tongji Medical College, Huazhong University of Science and Technology, 430030 Wuhan, China

Full list of author information is available at the end of the article



© The Author(s) 2021. This article is licensed under a Creative Commons Attribution 4.0 International License, which permits use, sharing, adaptation, distribution and reproduction in any medium or format, as long as you give appropriate credit to the original author(s) and the source, provide a link to the Creative Commons licence, and indicate if changes were made. The images or other third party material in this article are included in the article's Creative Commons licence, unless indicated otherwise in a credit line to the material. If material is not included in the article's Creative Commons licence and your intended use is not permitted by statutory regulation or exceeds the permitted use, you will need to obtain permission directly from the copyright holder. To view a copy of this licence, visit <http://creativecommons.org/licenses/by/4.0/>. The Creative Commons Public Domain Dedication waiver (<http://creativecommons.org/publicdomain/zero/1.0/>) applies to the data made available in this article, unless otherwise stated in a credit line to the data.

allele. While individuals carrying apoE ϵ 4 homozygotes have a 12-fold increased risk for AD, those carrying apoE ϵ 4 heterozygotes have a 2- to 3-fold increased risk for AD and the apoE4 reduces the age of AD onset [3]. Previous studies have shown that the neuron-specific expression of apoE4 can cause AD-like pathological changes in the brain and learning memory impairments in transgenic mice [4, 5]. It is notable that the apoE4 can be cleaved at Met 272 to produce apoE4 (Δ 272–299) fragment, which has been detected in the brain of apoE4 transgenic mice and AD patients [6]. Furthermore, the levels of apoE4 (Δ 272–299) in the transgenic mouse brain were closely related to the degrees of pathological manifestation, including learning memory dysfunction and neuronal degeneration [7]. Therefore, we speculate that apoE4 (Δ 272–299) may be an effector molecule of apoE4 for the neuronal pathogenesis of AD.

The disorders of mitochondrial morphology and function occur in the early stage of AD, even before the formation of A β plaque and Tau hyperphosphorylation tangles [8–10]. However, how the apoE4 plays in mitochondrial dysfunction and the pathogenesis of AD is still not fully understood. Previous studies have found that mitochondrial dysfunction is an earlier event than the occurrence of AD pathological changes in AD patients carrying the apoE4 gene and apoE4 transgenic mice [11, 12]. In addition, neuronal damage or stress can enhance apoE4 expression and cleavage into apoE4 (Δ 272–299) in rodents [6]. ApoE4 (Δ 272–299) over-expression can damage the mitochondrial respiratory chain-related complex in neurons, which is more effective than apoE4 [13]. However, it is still unclear whether and how the apoE4 (Δ 272–299) affects neuronal mitochondrial morphology and function.

The mitochondria-associated ER membrane (MAM) connects the endoplasmic reticulum (ER) with mitochondria, and is crucial for exchanging information and transferring substances between the ER and mitochondria. Currently, the MAM is important for cholesterol synthesis, lipid metabolism, calcium homeostasis, oxidative stress, mitochondria quality control and others [14–17]. The disturbance of MAM structure is associated with the development of various diseases, including AD [18–22]. The MAM is crucial for the transport of Ca²⁺ between the mitochondria and ER to maintain mitochondrial morphology and function. The alternation in Ca²⁺ transport and subsequent mitochondrial Ca²⁺ overload contributes to the pathogenesis of AD [23, 24]. Actually, the changes in MAM structure can interfere with calcium signaling and calcium homeostasis in AD [25].

It is well-known that the IP3R-GRP75-VDAC complex is a canonical pathway to mediate Ca²⁺ transport between the ER and mitochondria through the MAM. Glucose-regulated protein 75 (GRP75) functions to link the IP3R to VDAC in the complex, and maintains the conformational stability of IP3R [26]. Down-regulated GRP75 expression is associated with a decrease in mitochondrial Ca²⁺ levels [27]. Accordingly, up-regulated GRP75 expression may enhance the calcium transporting function of MAM, and increase mitochondrial Ca²⁺ load.

In this study, we investigated the possible mechanisms underlying the neurotoxic effects of apoE4 (Δ 272–299) on mitochondrial dysfunction. We found that neuron-specific apoE4 (Δ 272–299) expression triggered ER stress, and promoted the interaction between the ER and mitochondria, calcium transport and mitochondrial Ca²⁺ overload, disrupting mitochondrial morphology and function.

Materials and methods

Materials

This study used monoclonal antibodies (mAb) against Mitofusin1 (Mfn1, #14,739), Mitofusin2 (Mfn2, #11,925), Optic atrophy 1 (OPA1, #67,589), Mitochondrial fission factor (MFF, #84,580), Dynamin-related protein 1 (Drp1, #8570), p-Drp1 Ser⁶¹⁶ (#4494, Cell Signaling Technology, Beverly, MA, USA); Glucose-regulated protein 78 (GRP78, ab21685) and β -actin (ab8226, Abcam, Cambridge, MA, USA); polyclonal antibodies (pAb) against GRP75 (A0558), C/EBP homologous protein (CHOP, A0221, Abclonal, Wuhan, China). Other specific reagents included MitoTracker[®] Deep Red FM (M22426) and ER-Tracker[™] Blue (E12353), bicinchoninic acid (BCA) protein detection kit (#23,227, Thermo Fisher Scientific, Waltham, MA, USA), polyvinylidene difluoride (PVDF) membrane (GE Health, New York, USA), DCFH-DA (D6883) and 4-phenylbutyrate (4-PBA, an ERS inhibitor, SML0309, Sigma, St. Louis, USA); DAPI (G1012, Servicebio, Wuhan, China), JC-1 mitochondrial membrane potential detection (MMP) kit (C2006) and ATP detection kit (S2006, Beyotime Biotechnology, Beijing, China), MKT077 (a GRP75 inhibitor, HY15096, MCE, NJ, USA), and GRP75 siRNA (AuGCT Biotechnology, Wuhan, China).

Cell culture and treatment

Mouse neuroblastoma N2a cells were cultured in 6-well plates or a confocal dish (NEST Biotechnology, China) with 1:1 mixture of DMEM (HyClone) and Opti-MEM (Gibco) containing 10% fetal bovine serum (FBS; Gibco) in 5% CO₂ at 37 °C.

N2a cells were transfected with the pIRES empty vector (pIRES), pEGFP-apoE4 or pEGFP-apoE4 ($\Delta 272-299$), or pEGFP-GRP75 plasmid using HighGene Transfection reagent (Abclonal, China), according to the manufacturer's instruction. At 6 h post transfection, some pEGFP-apoE4 ($\Delta 272-299$)-transfected N2a cells were treated with vehicle, 1 mM 4-PBA or 1 μ M MKT077 for 18 h, respectively. Some pEGFP-apoE4 ($\Delta 272-299$)-transfected N2a cells were transfected with 50 nM control siRNA or siGRP75 for 24 h. The cells were used for microscopy, quantitative real-time PCR, and Western blot.

Animals and treatments

Female neuron-specific human apoE4 ($\Delta 272-299$) transgenic and age/sex-matched wild-type C57BL/6 mice at 12–14 months old were purchased from Cyagen Company (Cyagen, Guangdong, China). The mice were housed in a specific pathogen-free facility of the Animal Experimental Center of Tongji Medical College with free access to normal chow and water. The mice were injected intraperitoneally with pentobarbital sodium (40 mg/kg) and their brain hippocampal tissues were dissected for subsequent experiments. All experiments were performed in compliance with the guidelines and approved by the Animal Care and Use Committee at the Huazhong University of Science and Technology.

Western blot

The collected hippocampal tissues were homogenized in RIPA (Tris-HCl, pH 7.5, 50 mM; EDTA, 1 mM; NaCl, 150 mM; 1% NP-40; 0.1% SDS; 1% Triton X-100) with protease inhibitor PMSF and phosphatase inhibitor cocktail. Similarly, the different groups of N2a cells were washed with pre-cold PBS, and lysed in the same lysis buffer. After being centrifuged, the concentrations of proteins were quantified with a BCA Assay Kit. The lysate samples (20–30 μ g/lane) were separated on sodium dodecyl sulfate polyacrylamide gel electrophoresis (SDS-PAGE) on 10–12% gels and transferred onto the PVDF membranes. The membranes were blocked with 5% skim milk in 0.1% tween 20 TBST and incubated overnight with primary antibodies overnight at 4 °C. After being washed, the bound antibodies were detected with horseradish peroxidase (HRP)-conjugated secondary antibodies and visualized using the ultrahigh sensitivity ECL Kit in the Bio-Rad Exposure System. The relative levels of target protein to the control β -actin were quantified by densitometric analysis using ImageJ software.

Mitochondrial morphology analyses

Following treatment, the different groups of N2a cells were incubated with the MitoTracker[®] Deep Red FM (500 nM) for 30 min at 37 °C, washed and visualized under a confocal laser scanning microscope (Nikon, Japan). For morphological quantification of neurites, z-sections were merged (using maximal projection) and the entire lengths (from tip to tip) of mitochondrial neurites that had been labeled with MitoTracker Red were measured. In cell bodies, the mitochondrial lengths were measured in each z-section of the entire cell using ImageJ software. A total of 10 cells were selected randomly from each group and at least 50 mitochondria were measured in each cell.

ATP measurement

The ATP levels in the different groups of N2a cells were measured using a firefly luciferase-based ATP assay kit, according to the manufacturer's instructions. Briefly, the different groups of N2a cells were lysed and centrifuged at 12,000 g for 5 min. After determining protein concentrations with a BCA kit, the supernatant samples were mixed with the ATP detection working dilution. The ATP levels were quantified by luminescence and calculated, according to a standard curve established.

Determination of ROS

The levels of ROS in individual groups of N2a cells were determined using DCFH-DA. Briefly, the different groups of cells were treated with 10 μ M DCFH-DA for 20 min at 37 °C in the dark. The fluorescent signals in each well of cells were observed under a Nikon Confocal microscope. At least 10 fields of each group of cells were randomly selected, and the green fluorescence intensity of about 100 cells was measured using ImageJ software.

Measurement of mitochondrial membrane potential (MMP)

The MMP of individual groups of N2a cells was measured using JC-1-based MMP assay kit, according to the manufacturer's instructions. In brief, the different groups of cells were stained in triplicate with 1 ml of JC-1 staining working solution at 37 °C for 20 min. After being washed, the fluorescent signals were detected using a fluorescence plate reader at 590 nm (red) and 529 nm (green). The ratios of fluorescence intensities at 590 and 529 nm were used to determine the loss of MMP.

Assessment of co-localization of ER and mitochondria

The co-localization of the mitochondria and ER in individual groups of N2a cells was analyzed using ER-Tracker[™] Blue and MitoTracker[®] Deep Red FM kits,

according to the manufacturer's protocol. Briefly, the different groups of N2a cells were incubated in triplicate with the fluorescent probes ER-Tracker™ Blue (1 μ M) and MitoTracker® Deep Red FM (500 nM) at 37°C for 30 min in the dark. After being washed, the ER-mitochondria co-localization in each well of cells was observed under a laser scanning confocal microscope (Nikon) and analyzed by ImageJ software.

Measurement of Ca²⁺

The levels of mitochondrial, ER and cytoplasmic Ca²⁺ in individual groups of N2a cells were determined after transfection with mitochondrial, ER and cytoplasmic Ca²⁺ probe plasmids. In brief, N2a cells (5 × 10⁴/dish) were cultured in confocal dishes overnight and transfected in triplicate with pEGFP-apoE4 (Δ 272–299) plasmid and three Ca²⁺ probe plasmids for 24 h. After being washed, the cells were placed in 1 ml of pre-heated Hank's colorless Ca²⁺ imaging solution and examined under a laser confocal microscope using Nikon confocal imaging software at the time interval of 2 s for 5 min scanning. The baseline Ca²⁺ signal was scanned within 0–60s. At 60s (frame 30), individual wells of cells were stimulated with 1 μ M Ionomycin (Sigma) to induce Ca²⁺ release from the ER, and the changes in fluorescent signals of intracellular Ca²⁺ probes were recorded. After scanning, five ROIs were selected randomly in each scan range, and the changes of fluorescent signals of each frame were recorded. The levels of Ca²⁺ in each organelle were quantified using the relative concentration-time variation curve of Ca²⁺ and the baseline fluorescent signal as 1.

Transmission Electron microscope (TEM)

The impact of apoE4 (Δ 272–299) on the mitochondrial morphology and MAM structure in mouse brain tissues was examined by TEM. The dissected hippocampal tissues from individual mice were immersed in 2.5% glutaraldehyde-2% paraformaldehyde (4°C) and fixed with 1% osmic acid-1.5% potassium ferrocyanide for 1.5 hours. After being washed, the fixed samples were dehydrated and embedded. The ultra-thin tissue sections (50 nm) were double-stained with 3% uranyl acetate-lead citrate and examined for the mitochondrial morphology and MAM structural changes by TEM.

Statistical analysis

Data are expressed as means \pm S.E.M. The difference among the groups was determined by one-way analysis of variance (ANOVA) and post hoc Fisher's least significant difference using the SPSS 18.0 statistical software (SPSS, Chicago, IL, USA). The difference was considered statistically significant when a *P*-value of < 0.05 .

Results

ApoE4 (Δ 272–299) induces ER Stress *in vivo* and *in vitro*

To determine whether neuronal apoE4 (Δ 272–299) expression induces ER stress, we analyzed ER stress-related regulator expression in the hippocampus of neuronal apoE4 (Δ 272–299) transgenic and wild-type mice by Western blot assays. First, ApoE4 (Δ 272–299) expression was detected in the hippocampus of transgenic mice, but not in wild-type mice (Additional file 1: Figure S1A). As shown in Fig. 1a, the relative levels of CHOP, GRP78 and GRP75 expression in the hippocampus of apoE4 (Δ 272–299) transgenic mice were significantly higher than that in the wild-type mice. Immunohistochemistry analysis revealed that GRP78 expression was also higher in the hippocampus and cortex of transgenic mice than that of wild-type mice (Additional file 1: Figure S1B). Similarly, transfection with plasmid for apoE4- (Δ 272–299)-EGFP expression induced high levels of EGFP, CHOP, GRP78 and GRP75 expression in N2a cells (Fig. 1b and c). However, induction of apoE4 over-expression did not significantly increase their expression in N2a cells. Immunofluorescence indicated higher levels of GRP78 and GRP75 in the apoE4 (Δ 272–299)-EGFP over-expressed N2a cells (Additional file 1: Figure S1C and D). Hence, apoE4 (Δ 272–299), but not full length apoE4, expression induced ER stress in neurons. Because PBA can help folding misfolded proteins into correct structure during the process of a classical ER stress, we further tested whether treatment with PBA can mitigate the apoE4 (Δ 272–299)-induced ER stress in N2a cells by Western blot. We found that treatment with PBA significantly reduced CHOP, GRP78 and GRP75 expression in the apoE4 (Δ 272–299) over-expressed N2a cells (Fig. 1d). Together, such data indicated that apoE4 (Δ 272–299) expression induced ER stress in neurons.

ApoE4 (Δ 272–299) changes mitochondrial morphology and function

Because apoE4 (Δ 272–299) over-expression also enhanced the expression of GRP75, a critical molecule for the MAM function, we investigated whether apoE4 (Δ 272–299) over-expression could affect mitochondrial morphology and function through modulating MAM in neurons. TEM analysis indicated that there were more fragmented and shorter mitochondria with collapsed cristae in the hippocampus of apoE4 (Δ 272–299) transgenic mice, relative to that in the wild-type mice (Fig. 2a). Similarly, there were shorter and less number of mitochondria in the apoE4 (Δ 272–299) over-expressed N2a cells than that in the control cells (Fig. 2b–d). Hence, apoE4 (Δ 272–299) expression caused mitochondrial fragmentation and changed mitochondrial morphology in neurons.

Given that mitochondrial morphology is crucial for its function we examined the impact of apoE4 ($\Delta 272-299$) expression on mitochondrial function in N2a cells. The results exhibited that apoE4 ($\Delta 272-299$) expression significantly decreased the MMP and ATP production in N2a cells, relative to that in control N2a cells (Fig. 2e and f). In contrast, apoE4 ($\Delta 272-299$) expression significantly increased the levels of ROS in N2a cells (Fig. 2g). Thus, apoE4 ($\Delta 272-299$) expression disrupted mitochondrial respiratory function and caused oxidative stress in neurons.

ApoE4 ($\Delta 272-299$) modulates mitochondrial fusion and fission *in vivo* and *in vitro*

Next, we investigated the potential mechanism(s) by which apoE4 ($\Delta 272-299$) over-expression caused mitochondrial fragmentation. It is well known that mitochondrial morphology is regulated by the dynamic process of mitochondrial fusion and fission, which are dependent on the expression of pro-fusion MFN1/2 and OPA1, and pro-fission MFF and Drp1 proteins. Subsequently, we examined the effect of apoE4 ($\Delta 272-299$) over-expression on the relative levels of MFN1/2, OPA1, MFF and Drp1 expression in the hippocampus of mice and in N2a cells by Western blot. In comparison with that in the control mice, the relative levels of MFF expression and Drp1 phosphorylation at Ser616 significantly increased in the hippocampus of apoE4 ($\Delta 272-299$) transgenic mice (Fig. 3a), indicating that apoE4 ($\Delta 272-299$) promoted pro-fission activity. In contrast, the relative levels of MFN1/2 and OPA1 expression were significantly downregulated in the hippocampus of apoE4 ($\Delta 272-299$) transgenic mice (Fig. 3b). Similar patterns of MFN1/2, OPA1, MFF expression and Drp1 phosphorylation were detected in the apoE4 ($\Delta 272-299$) over-expressed N2a cells, relative to that in the control cells (Fig. 3c and d). Thus, apoE4 ($\Delta 272-299$) over-expression increased pro-fission activity and decreased pro-fusion activity, contributing to mitochondrial fragmentation in neurons.

Mitochondrial dysfunction induced by apoE4 ($\Delta 272-299$) is mitigated by PBA treatment

Given that apoE4 ($\Delta 272-299$) expression induced ER stress and mitochondrial dysfunction in neurons we tested whether PBA treatment to inhibit ER stress could mitigate the apoE4 ($\Delta 272-299$) expression-induced mitochondrial dysfunctions in N2a cells. We found that PBA treatment significantly increased the number and lengths of mitochondria, MMP, ATP levels, but decreased ROS levels in the apoE4 ($\Delta 272-299$) expressed N2a cells, relative to that of the PBA-untreated cells (Fig. 4a–f). Thus, PBA treatment to inhibit ER stress rescued the apoE4

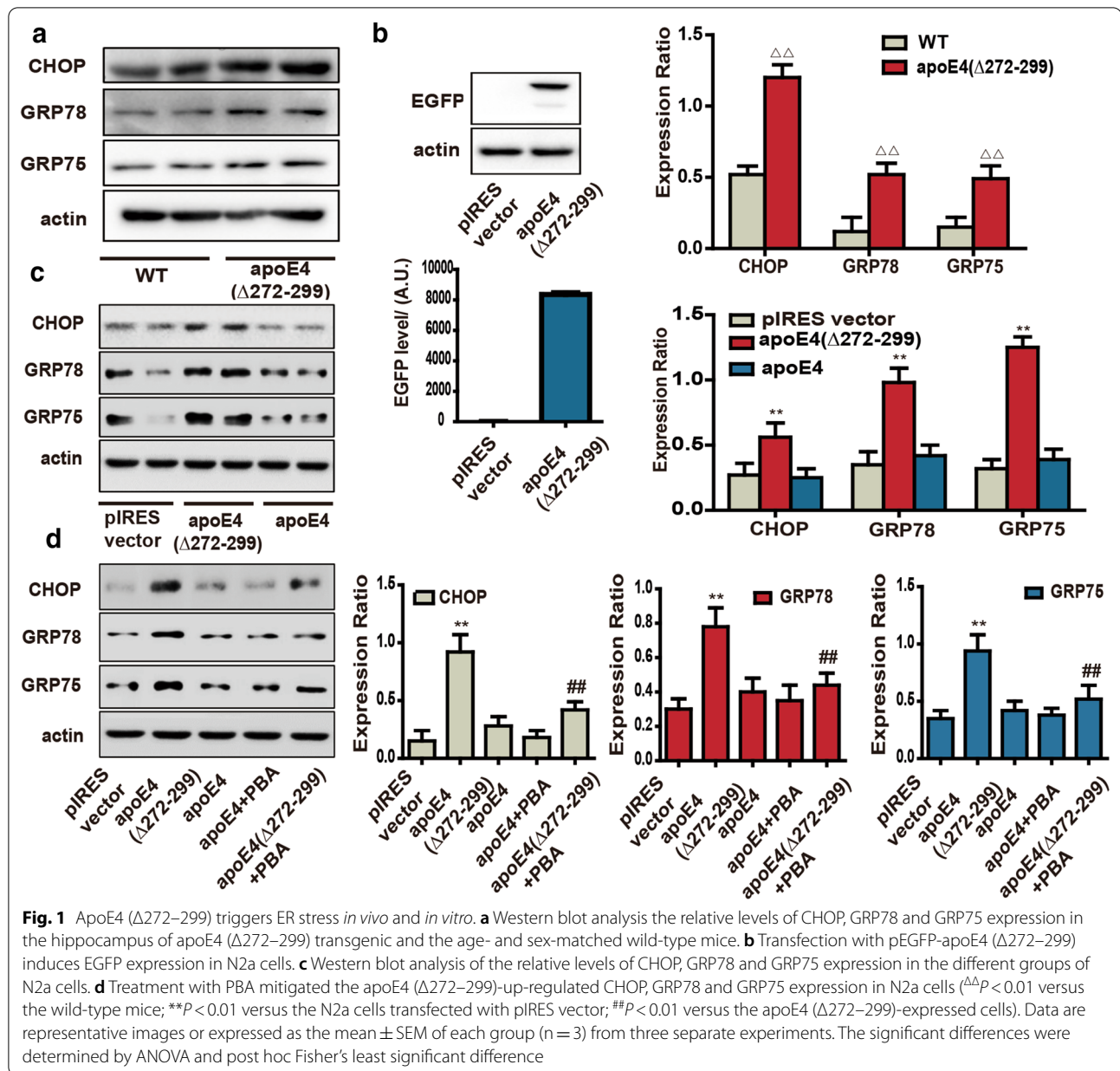
($\Delta 272-299$) expression-induced mitochondrial morphological changes and dysfunction in neurons. Further analyses indicated that PBA treatment also decreased the relative levels of MFF expression and Drp1 phosphorylation, but increased MFN1/2 and OPA1 expression in the apoE4 ($\Delta 272-299$) expressed N2a cells (Fig. 4g and h). Together, these data further supported that apoE4 ($\Delta 272-299$) expression induced ER stress, leading to mitochondrial morphological changes and dysfunction in neurons.

ApoE4 ($\Delta 272-299$) induces MAM coupling via GRP75

Because GRP75 is an important component of MAM structure, we tested how apoE4 ($\Delta 272-299$) expression affected MAM formation. In comparison with the wild-type mice, TEM displayed more mitochondria contacted with ER lumen in the apoE4 ($\Delta 272-299$) transgenic mice (Fig. 5a), indicating that apoE4 ($\Delta 272-299$) expression induced more MAM formation. Similarly, following transfection with probes for ER and mitochondria, we detected more overlapped areas of mitochondria and ER in the apoE4 ($\Delta 272-299$) over-expressed N2a cells, relative to that in the control cells, further supporting that apoE4 ($\Delta 272-299$) over-expression induced more MAM formation in N2a cells (Fig. 5b). Because the MAM is crucial for calcium transport, we tested how apoE4 ($\Delta 272-299$) over-expression affected calcium transport into mitochondria in N2a cells. We found that apoE4 ($\Delta 272-299$) over-expression significantly increased calcium transport into mitochondria in N2a cells, relative to that in the control cells (Fig. 5c).

To understand the molecular mechanisms by which apoE4 ($\Delta 272-299$) expression enhanced the MAM formation and calcium transport into mitochondria in neurons, we tested how GRP75 regulated the apoE4 ($\Delta 272-299$) expression-enhanced MAM formation in N2a cells. We found that induction of GRP75 over-expression significantly increased more MAM formation in N2a cells (Fig. 5d). Furthermore, we observed that the kinetics of GRP75 expression paralleled the formation of MAM (Fig. 5d). In addition, treatment with MKT077, a specific GRP75 inhibitor, significantly inhibited the apoE4 ($\Delta 272-299$)-induced MAM formation in N2a cells (Fig. 5e). Collectively, the gain and loss-of-function studies indicated that apoE4 ($\Delta 272-299$) induced MAM formation by enhancing GRP75 expression in neurons.

As a “connector”, the GRP75 links VDAC with IP3R to form the calcium channel complex between the ER lumen and mitochondria. We next determined whether apoE4 ($\Delta 272-299$) expression would enhance the expression of VDAC and IP3R. Interestingly, apoE4 ($\Delta 272-299$) expression did not alter the levels of VDAC and IP3R



expression in N2a cells (Additional file 1: Figure S1). Thus, such data indicated that apoE4 ($\Delta 272-299$) expression promoted MAM formation by enhancing GRP75 expression in neurons.

GRP75 is required for apoE4 ($\Delta 272-299$)-induced mitochondrial dysfunction

We further tested that GRP75 was necessary for the apoE4 ($\Delta 272-299$)-induced mitochondrial dysfunction in N2a cells. We found that treatment with MKT077 did not significantly reduced GRP75 expression in the apoE4

($\Delta 272-299$) over-expressed N2a cells (Fig. 6a). However, treatment with MKT077 significantly decreased the relative levels of MFF expression and Drp1 phosphorylation, but increased MFN1/2 and OPA1 expression in the apoE4 ($\Delta 272-299$) over-expressed N2a cells, relative to that in the untreated control cells (Fig. 6b and c). These indicated that inhibition of GRP75 corrected the imbalance of pro-fission and pro-fusion protein expression induced by apoE4 ($\Delta 272-299$) over-expression in N2a cells. Furthermore, treatment with MKT077 also significantly mitigated the apoE4 ($\Delta 272-299$)

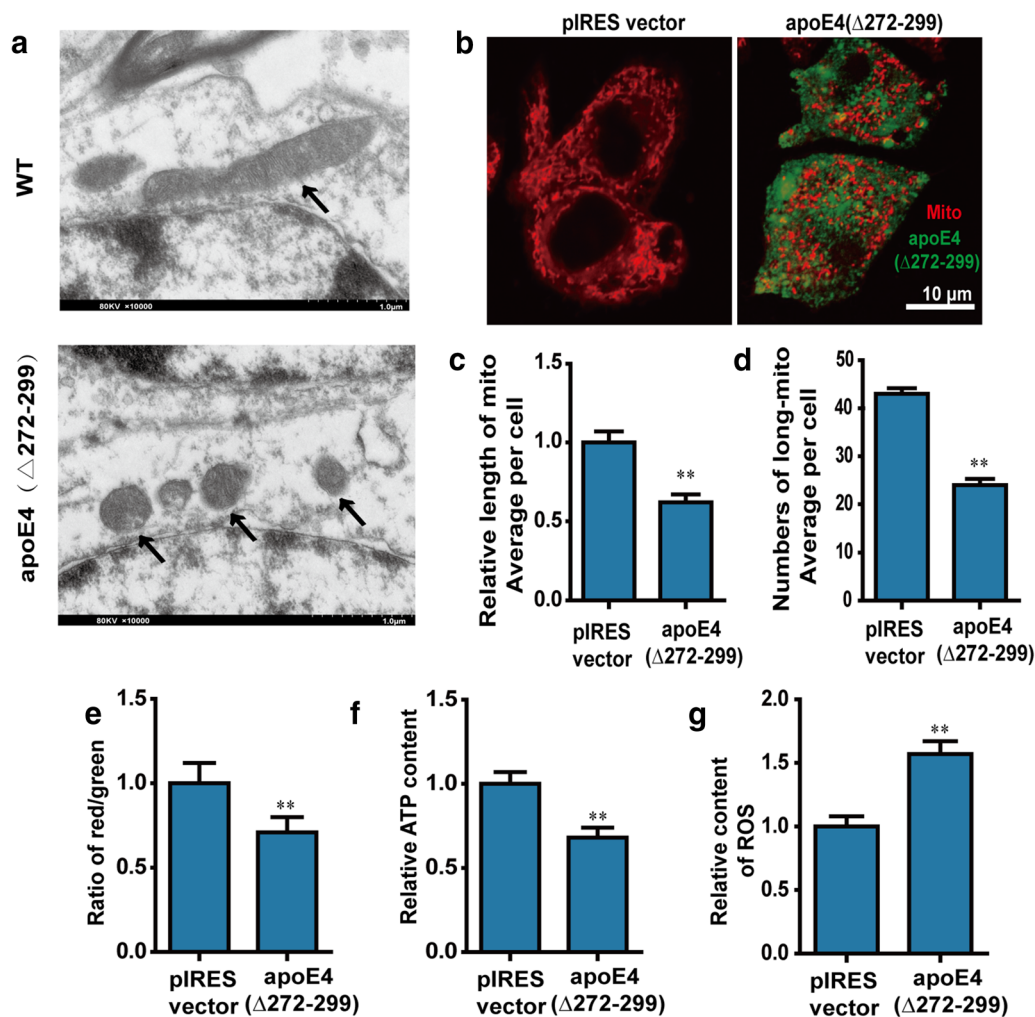


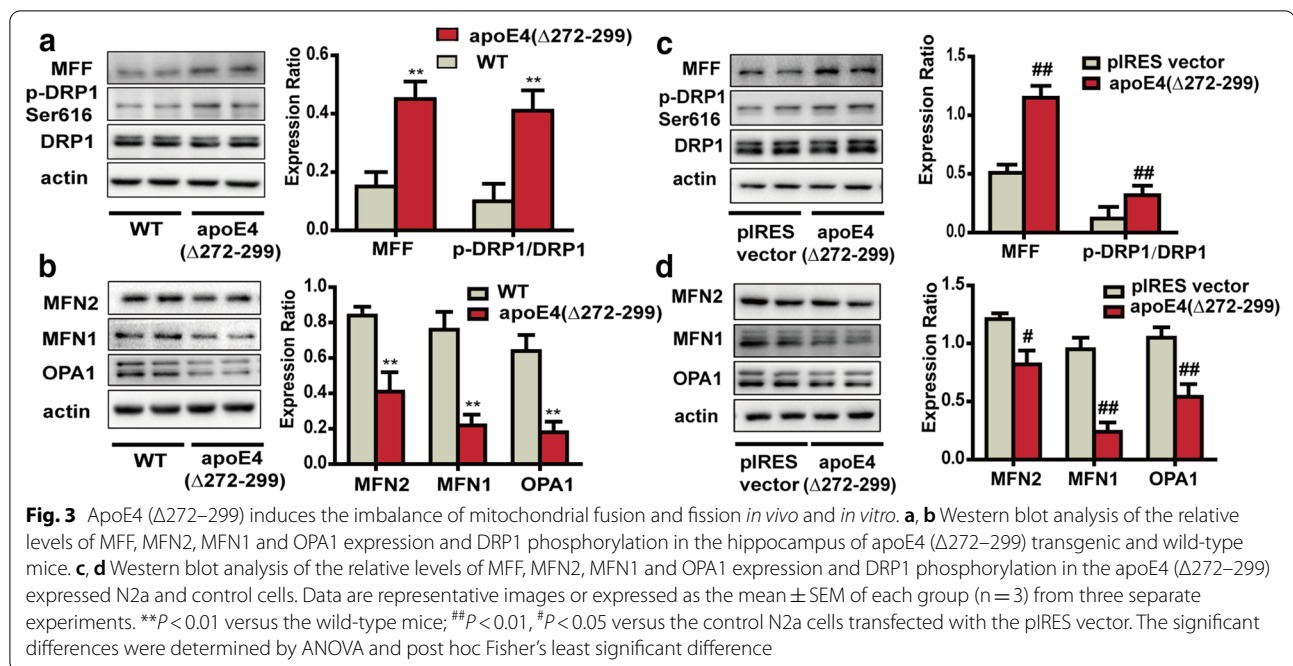
Fig. 2 ApoE4 ($\Delta 272-299$) induces mitochondrial morphology change and dysfunction. **a** TEM analysis of the morphological changes in mitochondria in the hippocampus of wild-type mice and apoE4 ($\Delta 272-299$) transgenic mice. **b** N2a cells were transiently transfected with pIRES or pIRES-apoE4 ($\Delta 272-299$) for 24 h, and their mitochondria were stained with mitotracker. The morphological changes in mitochondria were examined under a laser confocal microscope. The scale bar is 10 μ m. **c** The length of mitochondria was measured using the ImageJ, $n = 20-30$ mitochondria per group. **d** The areas of mitochondria was also measured using the ImageJ, $n = 20-30$ cells. **e** The MMP was detected by the JC-1. **f** The levels of ATP were analyzed by chemiluminescence. **g** The levels of mitochondrial ROS were analyzed by DCFH-DA. Data are representative images or expressed as the mean \pm SEM of each group ($n = 3$) from three separate experiments. ** $P < 0.01$ versus the control N2a cells transfected with pIRES vector, The significant differences were determined by ANOVA and post hoc Fisher's least significant difference

over-expression-decreased MMP and ATP production in the mitochondria and abrogated the apoE4 ($\Delta 272-299$) over-expression-increased ROS production in N2a cells (Fig. 6d–f). Similarly, GRP75 silencing by siRNA-based technology also significantly mitigated the imbalance of pro-fission and pro-fusion protein expression (Fig. 6g–i), restored MMP and ATP levels and abrogated an increase in the levels of ROS (Fig. 6j–l) as well as remarkably decreased calcium transport into the mitochondria following ionomycin stimulation (Fig. 6m) in the apoE4 ($\Delta 272-299$) over-expressed N2a cells. Collectively, such

data demonstrated that apoE4 ($\Delta 272-299$) overexpression promoted ER stress and enhanced MAM formation to induce mitochondrial dysfunction by upregulating GRP75 expression, leading to calcium overload in the mitochondria in neurons.

Discussion

Mitochondrial dysfunction is associated with the development of neurodegeneration diseases, such as AD [29, 30]. In this study, we provided evidence that neuron-specific apoE4 ($\Delta 272-299$) expression induced mitochondria



dysfunction *in vitro* and *in vivo* by triggering ER stress, enhancing MAM formation, leading to mitochondrial calcium overloads. Evidently, we found that apoE4 ($\Delta 272-299$) expression significantly decreased ATP production, MMP, but increased ROS production in neurons. The mitochondria dysfunction caused by apoE4 ($\Delta 272-299$) expression was likely attributed to up-regulated expression of GRP75, a chaperon protein that is expressed under the circumstance of ER stress and is crucial for the formation of calcium channel IP3R-GRP75-VDAC complex between the ER and mitochondria [31].

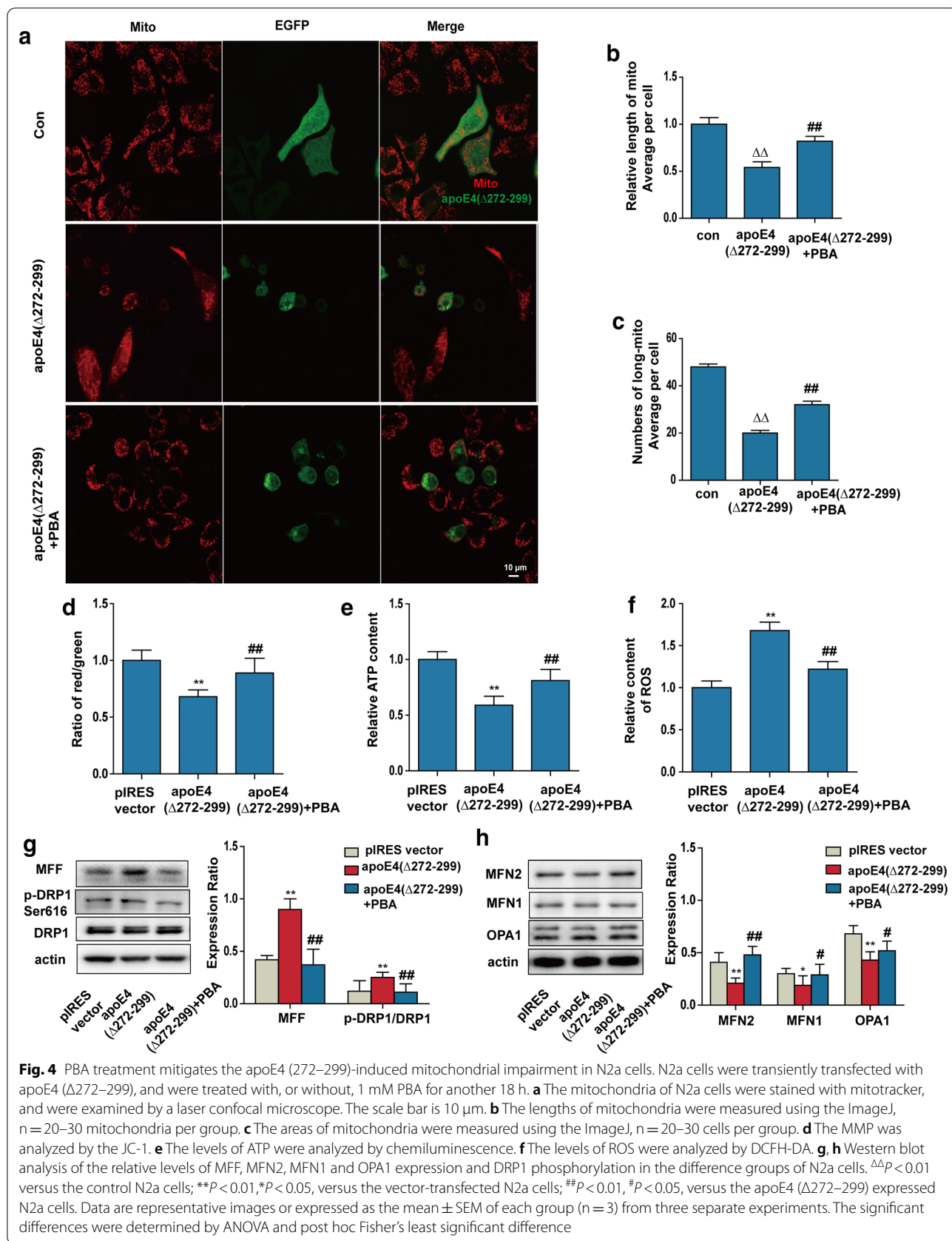
ApoE4 is a risk factor for the development of AD [32] and is associated with promoting the formation of amyloid plaques and neurofibrillary tangles [33, 34], neuroinflammation [35], mitochondria dysfunction [36], the blood brain barrier impairment [37] and others. Especially, apoE4-related mitochondria dysfunction is the key factor for the development of AD. Actually, a recent study reveals that the apoE4 allele alters the expression of many proteins in the mitochondrial function pathway in the brain of mice [38]. Similarly, apoE4 can also change the expression levels of proteins associated with mitochondrial dysfunction in mice under a cerebral ischemic challenge [39]. Thus, apoE4 is a risk factor for mitochondrial dysfunction.

Interestingly, although apoE4 has only two amino acid residues different from apoE3, the apoE4 protein has a more compacted structure and higher potency to form oligomerization than apoE3 [40]. We found that apoE4 ($\Delta 272-299$) expression significantly decreased

ATP production, MMP, but increased ROS production in neurons. Our findings support the notion that apoE4 may easily harm mitochondrial respiratory chain function and down-regulate respiratory enzyme expression [40]. Because neurons are sensitive to energy supply, the reduced ATP production by apoE4 ($\Delta 272-299$) should impair neuronal viability and function [41]. Intriguingly, a previous study has shown that apoE4 can attenuate the neuronal insulin receptor-related signaling by trapping insulin receptor in the endosome, which impairs mitochondrial energy supplement and neuronal function [42]. The impaired insulin receptor signaling and mitochondrial function may form a positive feedback to reduce neuron viability.

In 2001, Huang et al. [43] reported that apoE4 could be cleaved into apoE4 ($\Delta 272-299$), which could promote the formation of neurofibrillary tangle-like intracellular inclusion body in neurons of AD patients and N2a cells following inducing apoE4 ($\Delta 272-299$) expression [43]. In this study, we observed filament like apoE4 ($\Delta 272-299$)-GFP signals in transfected N2a cells. This, together with the fact of apoE4 ($\Delta 272-299$) inducing ER stress in neurons, suggests that apoE4 ($\Delta 272-299$) may be unable to fold properly into a correct structure to form oligomerization, leading to ER stress in neurons.

The ER stress is an important player in the development of AD and other neurodegeneration diseases [44]. Our previous study has shown that apoE4 ($\Delta 272-299$) can trigger ER stress and induce tau hyperphosphorylation and axonopathy in neurons [45]. In this study, we



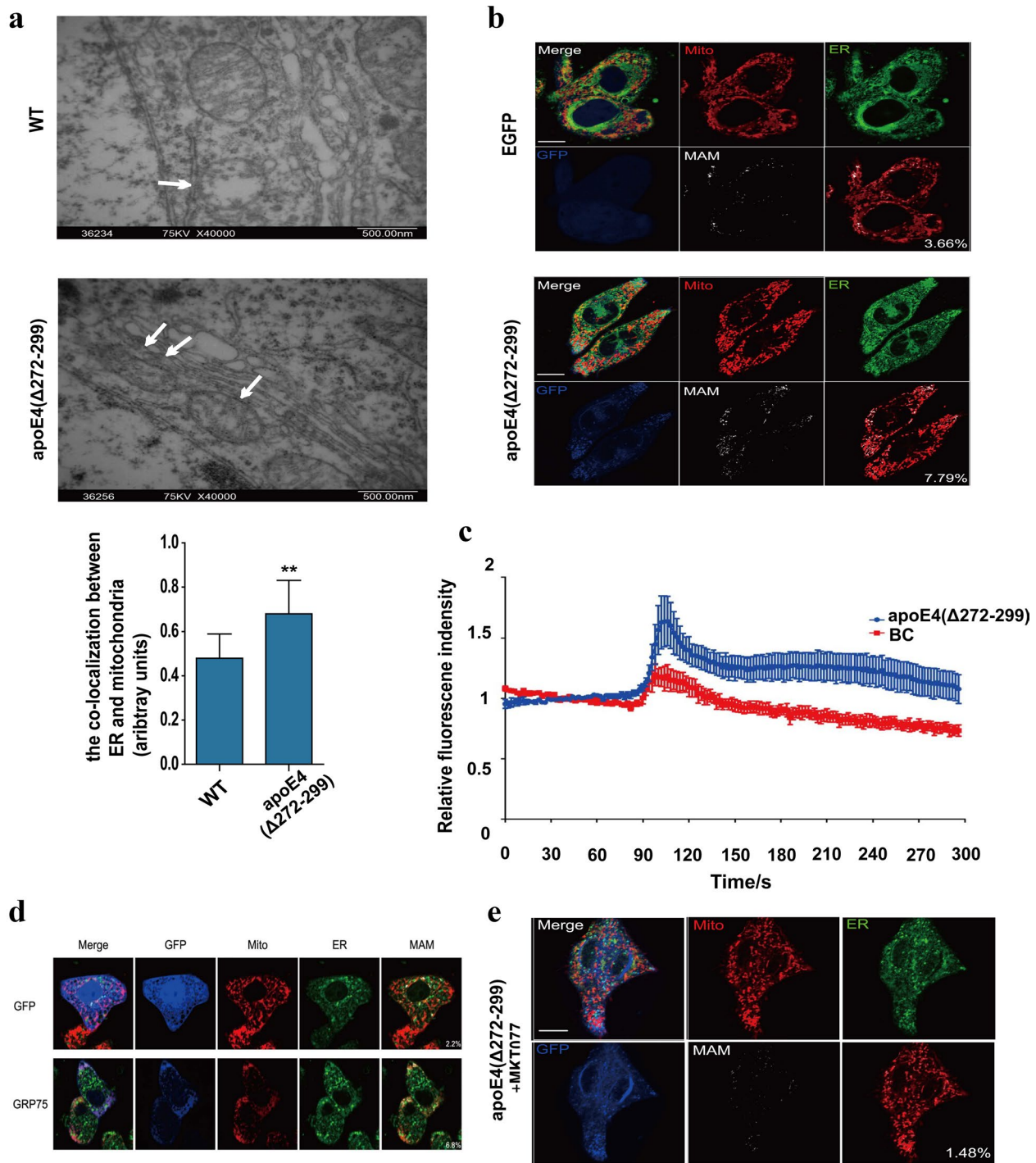
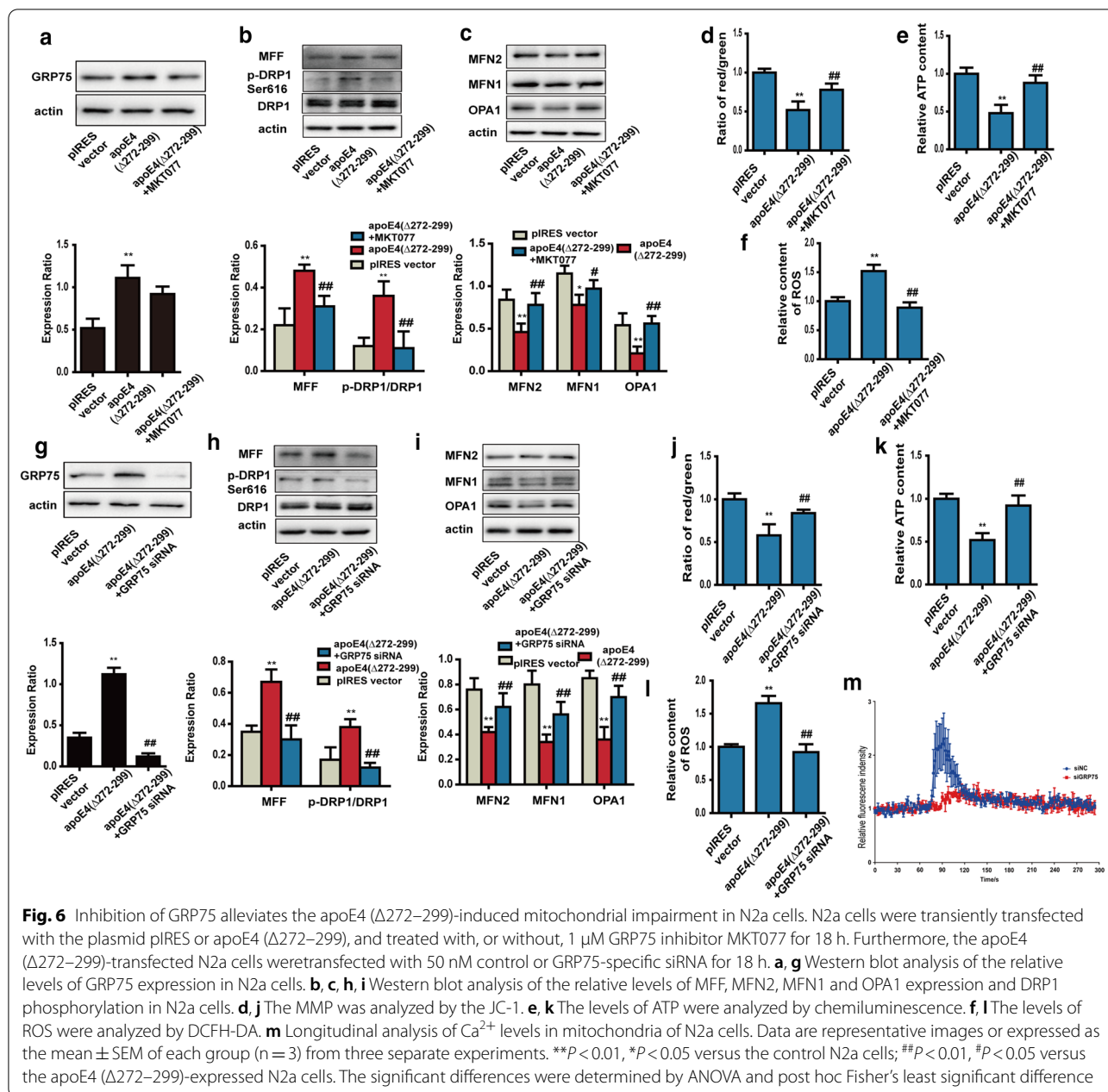


Fig. 5 ApoE4 (Δ272–299) promotes ER-mitochondria interaction and mitochondrial Ca²⁺ overload. **a** TEM analysis of the MAM in the hippocampus of wild-type and apoE4 (Δ272–299) transgenic mice. **b** Fluorescent microscopy analysis of MAM in apoE4 (Δ272–299)-expressed N2a cells. The scale bar is 10 μm. **c** Longitudinal analysis of Ca²⁺ levels in mitochondria of N2a cells following inducing apoE4 (Δ272–299) expression. **d** Induction of GRP75 over-expression increased the contact areas of MAM in N2a cells. The scale bar is 10 μm. **e** Treatment with MKT077 mitigated the MAM changes induced by apoE4 (Δ272–299) in N2a cells. The scale bar is 10 μm. Data are representative images or expressed as the mean ± SEM of each group (n = 3) from three separate experiments. **P < 0.01, versus the wild-type mice. The significant differences were determined by ANOVA and post hoc Fisher's least significant difference



revealed that the ER stress induced by apoE4 ($\Delta 272-299$) promoted mitochondrial dysfunction and mitochondrial calcium overload, which should contribute to the neurotoxicity of apoE4 ($\Delta 272-299$). Mechanistically, we found that the ER stress induced by apoE4 ($\Delta 272-299$) significantly upregulated the expression of GRP75 both *in vivo* and *in vitro*, which were abrogated by treatment with PBA. It is possible that the enhanced ER stress may up-regulate the expression and activity of transcription factors, such as ATF4, CHOP and others that promote the expression of GRP75. We are

interested in further investigating which transcription factor up-regulates GRP75 expression in neurons under an ER stress condition.

In this study, we found that apoE4 ($\Delta 272-299$) expression significantly promoted the MAM formation and mitochondrial calcium loads in neurons in a GRP75-dependent manner. Evidently, GRP75 over-expression significantly induced the formation of MAM and inhibition of GRP75 activity by treatment with MKT077 abrogated the apoE4 ($\Delta 272-299$) over-expression-induced MAM formation and mitochondrial calcium overload in

neurons. These findings indicated that apoE4 ($\Delta 272-299$) expression enhanced the MAM activity and extended previous observations in astrocytes by disrupting the lipid synthesis function of MAM [46]. Thus, our findings suggest that the ER stress and GRP75 may be new therapeutic targets for intervention of AD.

The MAM is crucial for mitochondrial function to regulate cholesterol metabolism [47], autophagy [48], intracellular calcium homeostasis [49] and others. There are several molecular models to describe the calcium transport channel between the ER and mitochondria, including the IP3R1-GRP75-VDAC1 complex [31]. Calcium can be transported from the ER through the complex channels into the mitochondria to maintain mitochondrial calcium homeostasis. Conceivably, increased MAM formation and activity should promote mitochondrial calcium overload, which is associated with the pathogenesis of various diseases, such as stroke [50], acute myocardium ischemia [51]. Mitochondrial calcium overload may cause respiratory outbreak and strikingly enhance the production of ROS, leading to mitochondrial dysfunction [52]. We observed that apoE4 ($\Delta 272-299$) expression decreased MMP and ATP production, but increased ROS production in N2a cells, the hallmarks of mitochondrial dysfunction. Interestingly, we found that apoE4 ($\Delta 272-299$) expression did not significantly alter the levels of IP3R1 and VDAC1 expression between the apoE4 ($\Delta 272-299$) expressed and control N2a cells. Furthermore, inhibition of GRP75 completely abrogated the apoE4 ($\Delta 272-299$)-induced mitochondria dysfunction. Hence, the up-regulated GRP75 expression by apoE4 ($\Delta 272-299$) is crucial for the increased MAM formation and mitochondrial calcium load, leading to mitochondrial dysfunction in neurons. Such novel findings may shed new lights in molecular mechanisms underlying the action of apoE4 ($\Delta 272-299$) in inducing mitochondrial dysfunction and neurotoxicity.

Mitochondrial morphology and dynamics are critical for mitochondrial function [53]. Mitochondrial morphology is regulated by the dynamic process of mitochondrial fission and fusion, which are dependent on the relative levels of MFF expression and Drp1 phosphorylation and Mfn1/2 and OPA1 expression, respectively [54]. We found that apoE4 ($\Delta 272-299$) over-expression significantly decreased Mfn1/2 and OPA1 expression, but increased MFF expression and Drp1 phosphorylation in neurons, indicating that apoE4 ($\Delta 272-299$) promoted mitochondrial fission, but inhibited mitochondrial fusion in neuron. Consequently, we detected mitochondrial fragmentation and other morphological changes in the hippocampus of apoE4 ($\Delta 272-299$) transgenic mice and apoE4 ($\Delta 272-299$) expressed N2a cells. Importantly, inhibition of GRP75 expression and activity abrogated

the apoE4 ($\Delta 272-299$)-changed mitochondrial dynamics and morphology in neurons. The morphological changes induced by apoE4 ($\Delta 272-299$) may be the basis of mitochondrial dysfunction in neurons. We are interested in further investigating how GRP75 regulates the mitochondrial dynamics in neurons.

In conclusion, our data revealed that apoE4 ($\Delta 272-299$), a specific N-terminal fragment of apoE4, significantly impaired neuron mitochondrial function both *in vivo* and *in vitro* by triggering ER stress, up-regulating GRP75 and subsequently increasing MAM formation, leading to mitochondrial calcium overload. Inhibition of GRP75 expression by siRNA or activity by MKT077 mitigated or abrogated the apoE4 ($\Delta 272-299$) expression-induced mitochondrial dysfunction in neurons. Hence, GRP75 may be a potential therapeutic target for ameliorating the neurotoxicity of apoE4 ($\Delta 272-299$), and our findings may uncover the molecular mechanisms by which GRP75 regulates the MAM calcium channel, contributing to the pathogenesis of neurodegenerative diseases.

Supplementary Information

The online version contains supplementary material available at <https://doi.org/10.1186/s13578-021-00563-y>.

Additional file 1: Figure S1. ApoE4 ($\Delta 272-299$) over-expression triggers ER stress *in vivo* and *in vitro*. (A) Western blot analysis of apoE4 ($\Delta 272-299$) expression in the hippocampus of transgenic and wild-type mice. (B) Representative immunohistochemistry images of GRP78 expression in the hippocampus and cortex of transgenic or wild type mice. (C) Representative immunofluorescent images of GRP78 expression in the control and apoE4 ($\Delta 272-299$)-EGFP over-expressed N2a cells. (D) Representative immunofluorescent images of GRP75 expression in the control and apoE4 ($\Delta 272-299$)-EGFP over-expressed N2a cells.

Acknowledgements

We thank Prof. Weike Ji for providing vectors used in the research.

Authors' contributions

TL and JC conducted cell culture, animal experiments and Western Blot. WH and YW conducted confocal fluorescence related experiments. BW and KX constructed all the plasmids used in the research. WH drafted the manuscript, and BS and Juan Chen revised the manuscript. All the experiments were designed and supervised by Juan Chen.

Funding

This work was supported by grants from the National Natural Science Foundation of China (Grant No.31670778 and No.81873725) to Juan Chen.

Availability of data and material

All the data or materials involved in the research are available if required.

Ethics approval and consent to participate

The animal research was approved by Animal Care and Use Committee at the Huazhong University of Science and Technology. There is no human samples involved in the research.

Consent for publication

All the authors have revised the final version of the manuscript and are consent for publication.

Competing interests

The authors declare no competing interests.

Author details

¹ Department of Biochemistry and Molecular Biology, School of Basic Medicine and the Collaborative Innovation Center for Brain Science, Tongji Medical College, Huazhong University of Science and Technology, 430030 Wuhan, China. ² Department of Clinical laboratory, Union Hospital, Tongji Medical College, Huazhong University of Science and Technology, 430022 Wuhan, China. ³ Division of Cardiology, Department of Internal Medicine, Tongji Hospital, Tongji Medical College, Huazhong University of Science and Technology, 430030 Wuhan, China.

Received: 19 December 2020 Accepted: 19 February 2021

Published online: 06 March 2021

References

- Kim JH, Oho AUID-. Genetics of Alzheimer's Disease. *Dement Neurocogn Disord*. 2018;17:131–6.
- Bellenguez C, Grenier-Boley B, Lambert JC. Genetics of Alzheimer's disease: where we are, and where we are going. *Curr Opin Neurobiol*. 2020;61:40–8.
- Corder EH, Saunders AM, Strittmatter WJ, Schmechel DE, Gaskell PC, Small GW, Roses AD, Haines JL, Pericak-Vance MA. Gene dose of apolipoprotein E type 4 allele and the risk of Alzheimer's disease in late onset families. *Science*. 1993;261:921–3.
- Tesseur I, Van Dorpe J, Spittaels K, Van den Haute C, Moechars D, Van Leuven F. Expression of human apolipoprotein E4 in neurons causes hyperphosphorylation of protein tau in the brains of transgenic mice. *Am J Pathol*. 2000;156:951–64.
- Tesseur I, Van Dorpe J, Bruynseels K, Bronfman F, Sciot R, Van Lommel A, Van Leuven F. Prominent axonopathy and disruption of axonal transport in transgenic mice expressing human apolipoprotein E4 in neurons of brain and spinal cord. *Am J Pathol*. 2000;157:1495–510.
- Brecht WJ, Harris FM, Chang S, Tessour I, Yu GQ, Xu Q, Dee FJ, Wyss-Coray T, Buttini M, Mucke L, Mahley RW, Huang Y. Neuron-specific apolipoprotein e4 proteolysis is associated with increased tau phosphorylation in brains of transgenic mice. *J Neurosci*. 2004;24:2527–34.
- Huang Y, Liu XQ, Wyss-Coray T, Brecht WJ, Sanan DA, Mahley RW. Apolipoprotein E fragments present in Alzheimer's disease brains induce neurofibrillary tangle-like intracellular inclusions in neurons. *Proc Natl Acad Sci U S A*. 2001;98:8838–43.
- Atamna H, Frey WH 2nd. Mechanisms of mitochondrial dysfunction and energy deficiency in Alzheimer's disease. *Mitochondrion*. 2007;7:297–310.
- Parihar MS, Brewer GJ. Mitochondrial failure in Alzheimer disease. *Am J Physiol Cell Physiol*. 2007;292:C8–23.
- Friedland-Leuner K, Stockburger C, Denzer I, Eckert GP, Muller WE. Mitochondrial dysfunction: cause and consequence of Alzheimer's disease. *Prog Mol Biol Transl Sci*. 2014;127:183–210.
- Chen HK, Ji ZS, Dodson SE, Miranda RD, Rosenblum CI, Reynolds IJ, Freedman SB, Weisgraber KH, Huang Y, Mahley RW. Apolipoprotein E4 domain interaction mediates detrimental effects on mitochondria and is a potential therapeutic target for Alzheimer disease. *J Biol Chem*. 2011;286:5215–21.
- Perkins M, Wolf AB, Chavira B, Shonebarger D, Meckel JP, Leung L, Ballina L, Ly S, Saini A, Jones TB, Vallejo J, Jentarra G, Valla J. Altered Energy Metabolism Pathways in the Posterior Cingulate in Young Adult Apolipoprotein E varepsilon4 Carriers. *J Alzheimers Dis*. 2016;53:95–106.
- Nakamura T, Watanabe A, Fujino T, Hosono T, Michikawa M. Apolipoprotein E4 (1-272) fragment is associated with mitochondrial proteins and affects mitochondrial function in neuronal cells. *Mol Neurodegener*. 2009;4:35.
- Vance JE. MAM (mitochondria-associated membranes) in mammalian cells: lipids and beyond. *Biochim Biophys Acta*. 2014;1841:595–609.
- Hayashi T, Su TP. Sigma-1 receptor chaperones at the ER-mitochondrion interface regulate Ca(2+) signaling and cell survival. *Cell*. 2007;131:596–610.
- Verfaillie T, Rubio N, Garg AD, Bultynck G, Rizzuto R, Decuypere JP, Piette J, Linehan C, Gupta S, Samali A, Agostinis P. PERK is required at the ER-mitochondrial contact sites to convey apoptosis after ROS-based ER stress. *Cell Death Differ*. 2012;19:1880–91.
- Murley A, Lackner LL, Osman C, West M, Voeltz GK, Walter P, Nunnari J. ER-associated mitochondrial division links the distribution of mitochondria and mitochondrial DNA in yeast. *Elife*. 2013;2:e00422.
- Veeresh P, Kaur H, Sarmah D, Mounica L, Verma G, Kotian V, Kesharwani R, Kalia K, Borah A, Wang X, Dave KR, Rodriguez AM, Yavagal DR, Bhattacharya P. Endoplasmic reticulum-mitochondria crosstalk: from junction to function across neurological disorders. *Ann NY Acad Sci*. 2019;1457:41–60.
- Area-Gomez E, de Groof A, Bonilla E, Montesinos J, Tanji K, Boldogh I, Pon L, Schon EA. A key role for MAM in mediating mitochondrial dysfunction in Alzheimer disease. *Cell Death Dis*. 2018;9:335.
- Volgyi K, Juhasz G, Kovacs Z, Penke B. Dysfunction of Endoplasmic Reticulum (ER) and Mitochondria (MT) in Alzheimer's Disease: The Role of the ER-MT Cross-Talk. *Curr Alzheimer Res*. 2015;12:655–72.
- Area-Gomez E, Schon EA. On the Pathogenesis of Alzheimer's Disease: The MAM Hypothesis. *FASEB J*. 2017;31:864–7.
- Leal NS, Schreiner B, Pinho CM, Filadi R, Wiehager B, Karlstrom H, Pizzo P, Ankarcrona M. Mitofusin-2 knockdown increases ER-mitochondria contact and decreases amyloid beta-peptide production. *J Cell Mol Med*. 2016;20:1686–95.
- Liang J, Kulasiri D, Samarasinghe S. Ca²⁺ dysregulation in the endoplasmic reticulum related to Alzheimer's disease: A review on experimental progress and computational modeling. *Biosystems*. 2015;134:1–15.
- Supnet C, Bezprozvanny I. Neuronal calcium signaling, mitochondrial dysfunction, and Alzheimer's disease. *J Alzheimers Dis*. 2010;20(Suppl 2):487–98.
- Schon EA, Area-Gomez E. Is Alzheimer's disease a disorder of mitochondria-associated membranes. *J Alzheimers Dis*. 2010;20(Suppl 2):281–92.
- Szabadkai G, Bianchi K, Varnai P, De Stefani D, Wieckowski MR, Cavagna D, Nagy AI, Balla T, Rizzuto R. Chaperone-mediated coupling of endoplasmic reticulum and mitochondrial Ca²⁺ channels. *J Cell Biol*. 2006;175:901–11.
- Honrath B, Metz I, Bendridi N, Rieusset J, Culmsee C, Dolga AM. Glucose-regulated protein 75 determines ER-mitochondrial coupling and sensitivity to oxidative stress in neuronal cells. *Cell Death Discov* 2017;3:17076.
- Arun S, Liu L, Donmez G. Mitochondrial Biology and Neurological Diseases. *Curr Neuropharmacol*. 2016;14:143–54.
- Petrozzi L, Ricci G, Giglioli NJ, Siciliano G, Mancuso M. Mitochondria and neurodegeneration. *Biosci Rep*. 2007;27:87–104.
- Moreira PI, Zhu X, Wang X, Lee HG, Nunomura A, Petersen RB, Perry G, Smith MA. Mitochondria: a therapeutic target in neurodegeneration. *Biochim Biophys Acta*. 2010;1802:212–20.
- Szabadkai G, Bianchi K, Varnai P, De Stefani D, Wieckowski MR, Cavagna D, Nagy AI, Balla T, Rizzuto R. Chaperone-mediated coupling of endoplasmic reticulum and mitochondrial Ca²⁺ channels. *J Cell Biol*. 2006;175:901–11.
- Belinson H, Kariv-Inbal Z, Kaye R, Masliah E, Michaelson DM. Following activation of the amyloid cascade, apolipoprotein E4 drives the in vivo oligomerization of amyloid-beta resulting in neurodegeneration. *J Alzheimers Dis*. 2010;22:959–70.
- Paroni G, Bisceglia P, Seripa D. Understanding the Amyloid Hypothesis in Alzheimer's Disease. *J Alzheimers Dis*. 2019;68:493–510.
- Uddin MS, Oho AUID-, Kabir MT, Al MA, Abdel-Daim MM, Barreto GE, Oho AUID-, Ashraf GM. APOE and Alzheimer's Disease: Evidence Mounts that Targeting APOE4 may Combat Alzheimer's Pathogenesis. *Mol Neurobiol*. 2019;56:2450–65.
- Tao Q, TFA A, DeCarli C, Auerbach SH, Devine S, Stein TD, Zhang X, Mas-saro J, Au R, Qiu WQ. Association of Chronic Low-grade Inflammation With Risk of Alzheimer Disease in ApoE4 Carriers. *JAMA Netw Open*. 2018;1:e183597.
- Orr AL, Kim C, Jimenez-Morales D, Newton BW, Johnson JR, Krogan NJ, Swaney DL, Mahley RW. Neuronal Apolipoprotein E4 Expression Results in

- Proteome-Wide Alterations and Compromises Bioenergetic Capacity by Disrupting Mitochondrial Function. *J Alzheimers Dis*. 2019;68:991–1011.
37. Montagne A, Oho AUID-, Nation DA, Sagare AP, Barisano G, Oho AUID-, Sweeney MD, Chakhoyan A, Pachicano M, Joe E, Nelson AR, D'Orazio LM, Buennagel DP, Harrington MG, TLS B, Fagan AM, Ringman JM, Schneider LS, Morris JC, Reiman EM, Oho AUID-, Caselli RJ, Chui HC, Tcw J, Oho AUID-, Chen Y, Pa J, Conti PS, Law M, Toga AW, Zlokovic BV, Oho AUID-. APOE4 leads to blood-brain barrier dysfunction predicting cognitive decline. *Nature*. 2020;581:71–6.
 38. He K, Nie L, Zhou Q, Rahman SU, Liu J, Yang X, Li S. Proteomic profiles of the early mitochondrial changes in APP/PS1 and ApoE4 transgenic mice models of Alzheimer's Disease. *J Proteome Res* 2019;18:2632–2642.
 39. James R, Searcy JL, Le BT, Martin SF, Gliddon CM, Povey J, Deighton RF, Kerr LE, McCulloch J, Horsburgh K. Proteomic analysis of mitochondria in APOE transgenic mice and in response to an ischemic challenge. *J Cereb Blood Flow Metab*. 2012;32:164–76.
 40. Chen HK, Ji ZS, Dodson SE, Miranda RD, Rosenblum CI, Reynolds IJ, Freedman SB, Weisgraber KH, Huang Y, Mahley RW. Apolipoprotein E4 domain interaction mediates detrimental effects on mitochondria and is a potential therapeutic target for Alzheimer disease. *J Biol Chem*. 2011;286:5215–21.
 41. Verderio C, Matteoli M. ATP in neuron-glia bidirectional signalling. *Brain Res Rev*. 2011;66:106–14.
 42. Zhao N, Liu CC, Van Ingelgom AJ, Martens YA, Linares C, Knight JA, Painter MM, Sullivan PM, Bu G. Apolipoprotein E4 Impairs Neuronal Insulin Signaling by Trapping Insulin Receptor in the Endosomes. *Neuron*. 2017;96:115–29.e5.
 43. Huang Y, Liu XQ, Wyss-Coray T, Brecht WJ, Sanan DA, Mahley RW. Apolipoprotein E fragments present in Alzheimer's disease brains induce neurofibrillary tangle-like intracellular inclusions in neurons. *Proc Natl Acad Sci U S A*. 2001;98:8838–43.
 44. Xiang C, Wang Y, Zhang H, Han F. The role of endoplasmic reticulum stress in neurodegenerative disease. *Apoptosis*. 2017;22:1–26.
 45. Liang T, Xue F, Hang W, Wen B, Zhang Q, Chen J, Liu X, Chen J. Neuron-Specific Apolipoprotein E4 (1-272) Fragment Induces Tau Hyperphosphorylation and Axonopathy via Triggering Endoplasmic Reticulum Stress. *J Alzheimers Dis*. 2019;71:597–611.
 46. Tambini MD, Pera M, Kanter E, Yang H, Guardia-Laguarta C, Holtzman D, Sulzer D, Area-Gomez E, Schon EA. ApoE4 upregulates the activity of mitochondria-associated ER membranes. *EMBO Rep*. 2016;17:27–36.
 47. Rusinol AE, Cui Z, Chen MH, Vance JE. A unique mitochondria-associated membrane fraction from rat liver has a high capacity for lipid synthesis and contains pre-Golgi secretory proteins including nascent lipoproteins. *J Biol Chem*. 1994;269:27494–502.
 48. Gelmetti V, De Rosa P, Torosantucci L, Marini ES, Romagnoli A, Di RM, Arena G, Vignone D, Fimia GM, Valente EM. PINK1 and BECN1 relocalize at mitochondria-associated membranes during mitophagy and promote ER-mitochondria tethering and autophagosome formation. *Autophagy*. 2017;13:654–69.
 49. Szymanski J, Janikiewicz J, Michalska B, Patalas-Krawczyk P, Perrone M, Ziolkowski W, Duszynski J, Pinton P, Dobrzyn A, Wieckowski MR. Interaction of Mitochondria with the Endoplasmic Reticulum and Plasma Membrane in Calcium Homeostasis, Lipid Trafficking and Mitochondrial Structure. *Int J Mol Sci*. 2017;18.
 50. Halestrap AP. Calcium, mitochondria and reperfusion injury: a pore way to die. *Biochem Soc Trans*. 2006;34:232–7.
 51. Luongo TS, Lambert JP, Yuan A, Zhang X, Gross P, Song J, Shanmughapriya S, Gao E, Jain M, Houser SR, Koch WJ, Cheung JY, Madesh M, Elrod JW. The Mitochondrial Calcium Uniporter Matches Energetic Supply with Cardiac Workload during Stress and Modulates Permeability Transition. *Cell Rep*. 2015;12:23–34.
 52. Yan MH, Wang X, Zhu X. Mitochondrial defects and oxidative stress in Alzheimer disease and Parkinson disease. *Free Radic Biol Med*. 2013;62:90–101.
 53. Itoh K, Nakamura K, Iijima M, Sesaki H. Mitochondrial dynamics in neurodegeneration. *Trends Cell Biol*. 2013;23:64–71.
 54. El-Hattab AW, Suleiman J, Almannai M, Scaglia F. Mitochondrial dynamics: Biological roles, molecular machinery, and related diseases. *Mol Genet Metab*. 2018;125:315–21.

Publisher's note

Springer Nature remains neutral with regard to jurisdictional claims in published maps and institutional affiliations.

Ready to submit your research? Choose BMC and benefit from:

- fast, convenient online submission
- thorough peer review by experienced researchers in your field
- rapid publication on acceptance
- support for research data, including large and complex data types
- gold Open Access which fosters wider collaboration and increased citations
- maximum visibility for your research: over 100M website views per year

At BMC, research is always in progress.

Learn more biomedcentral.com/submissions

